



Pioneer Energy Services

Microresistivity Log

API No.	15-015-24,016-00-00		
Company	Vess Oil Corporation		
Well	Wilson A No.451		
Field	El Dorado		
County	Butler	State	Kansas
Location	SE NW NW NW/4 450' FNL & 450' FWL		
Sec: 8	Twp: 25S	Rge: 5E	Other Services CNL/CDL DIL

Permanent Datum	Ground Level	Elevation 1409	K.B. 1415 D.F. 1409 G.L. 1409
Log Measured From	Kelly Bushing	6 Ft. Above Perm. Datum	
Drilling Measured From	Kelly Bushing		
Date	4/7/2014		
Run Number	Three		
Depth Driller	2460		
Depth Logger	2458		
Bottom Logged Interval	2456		
Top Log Interval	250		
Casing Driller	8.625 @ 261		
Casing Logger	260		
Bit Size	7.875		
Type Fluid in Hole	Chemical		
Salinity,ppm CL	700		
Density / Viscosity	9.3	50	
pH / Fluid Loss	9.5	9.0	
Source of Sample	Flowline		
Rm @ Meas. Temp	1.3 @ 62		
Rmf @ Meas. Temp	.98 @ 62		
Rmc @ Meas. Temp	1.76 @ 62		
Source of Rmf / Rmc	Charts		
Rm @ BHT	.8 @ 101		
Operating Rig Time	4 1/2 Hours		
Max Rec. Temp. F	101		
Equipment Number	17		
Location	Hays		
Recorded By	C. Desaire		
Witnessed By	Roger Martin		

<<< Fold Here >>>

All interpretations are opinions based on inferences from electrical or other measurements and we cannot and do not guarantee the accuracy or correctness of any interpretation, and we shall not, except in the case of gross or willful negligence on our part, be liable or responsible for any loss, costs, damages, or expenses incurred or sustained by anyone resulting from any interpretation made by any of our officers, agents or employees. These interpretations are also subject to our general terms and conditions set out in our current Price Schedule.

Comments

Thank you for using Log-Tech, Inc.
(785) 625-3858

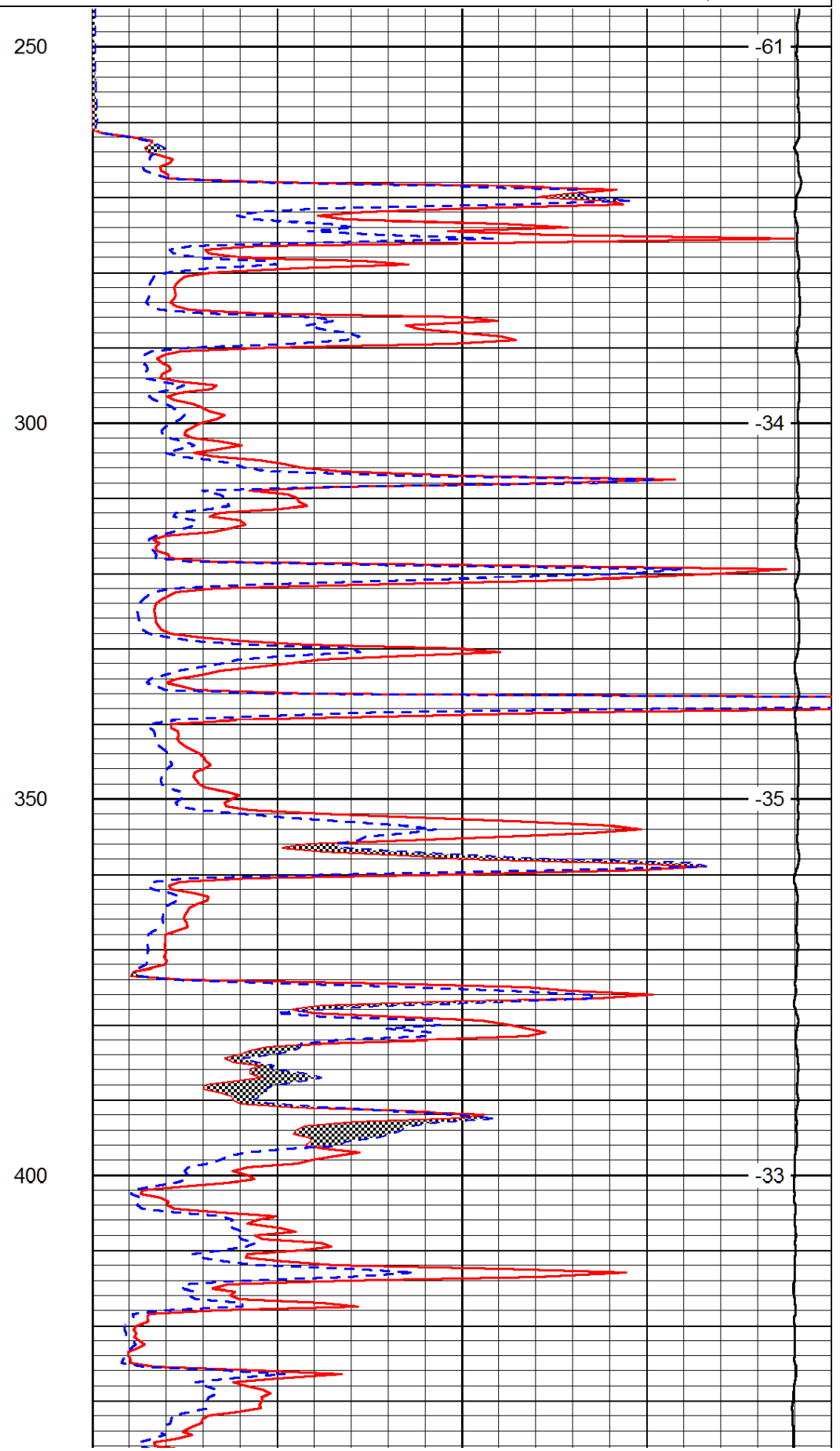
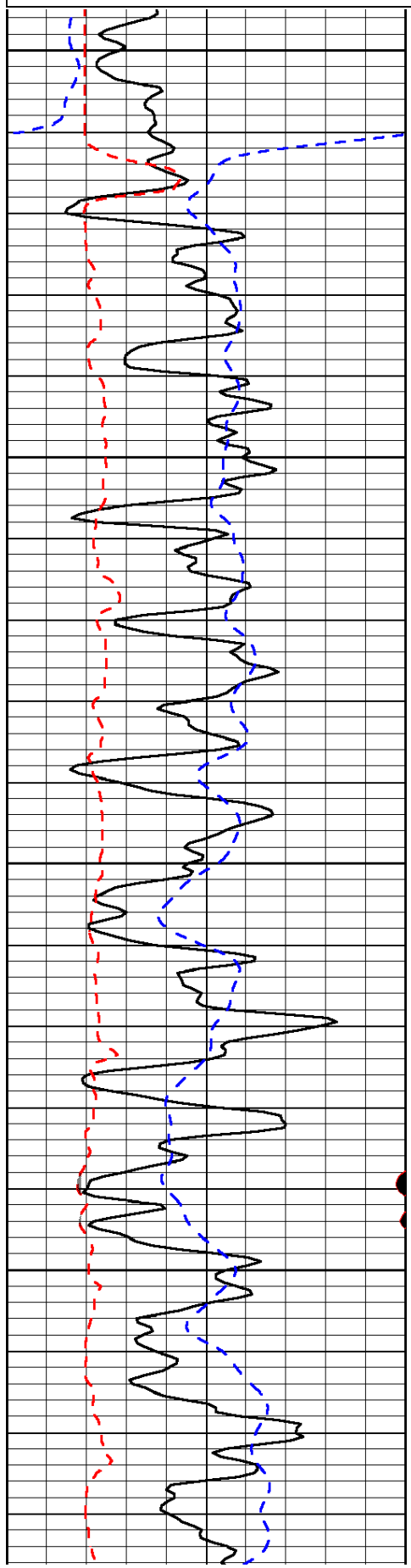
Potwin KS, SE to 50th Rd,
2 E, S Into

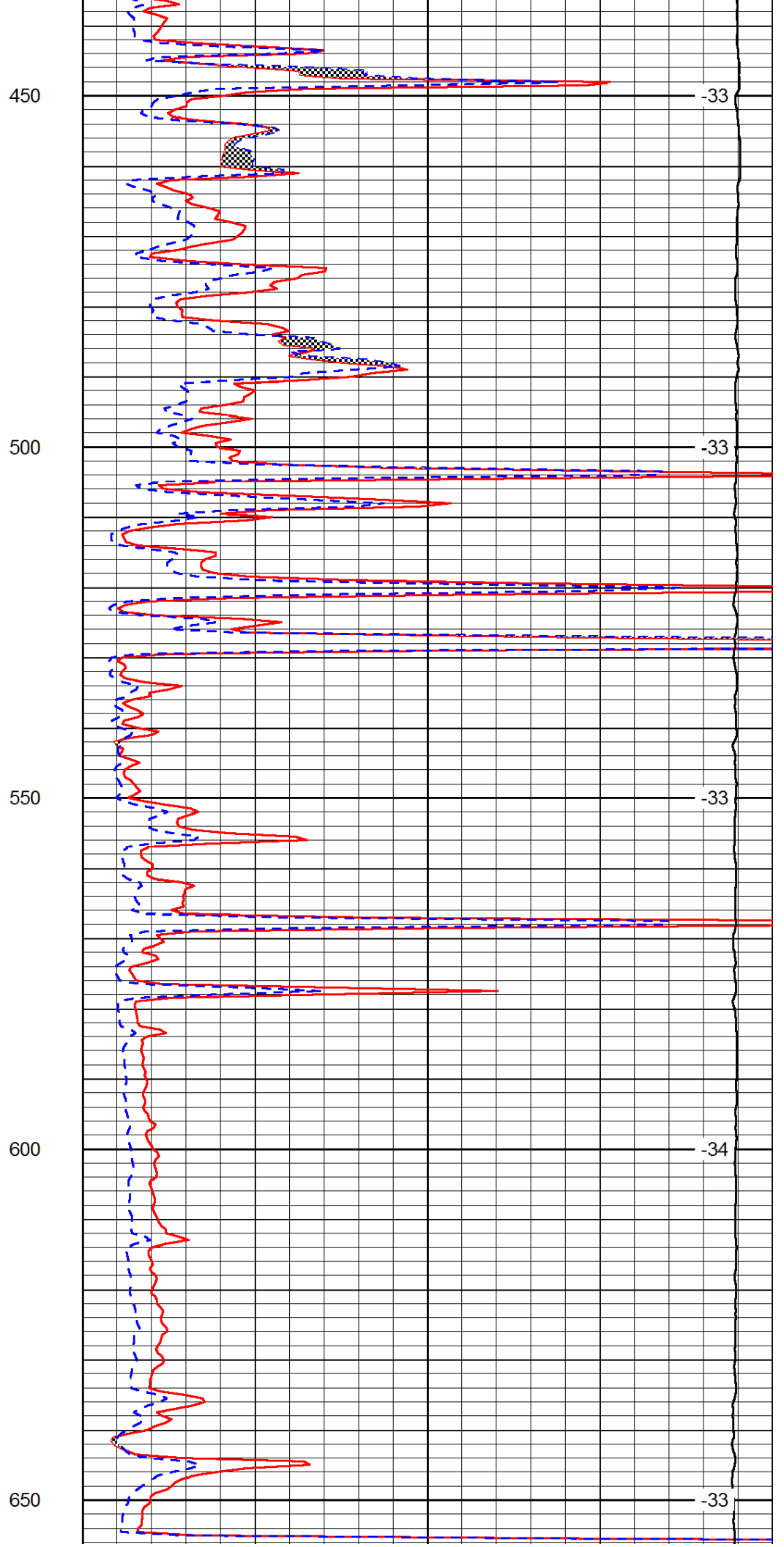
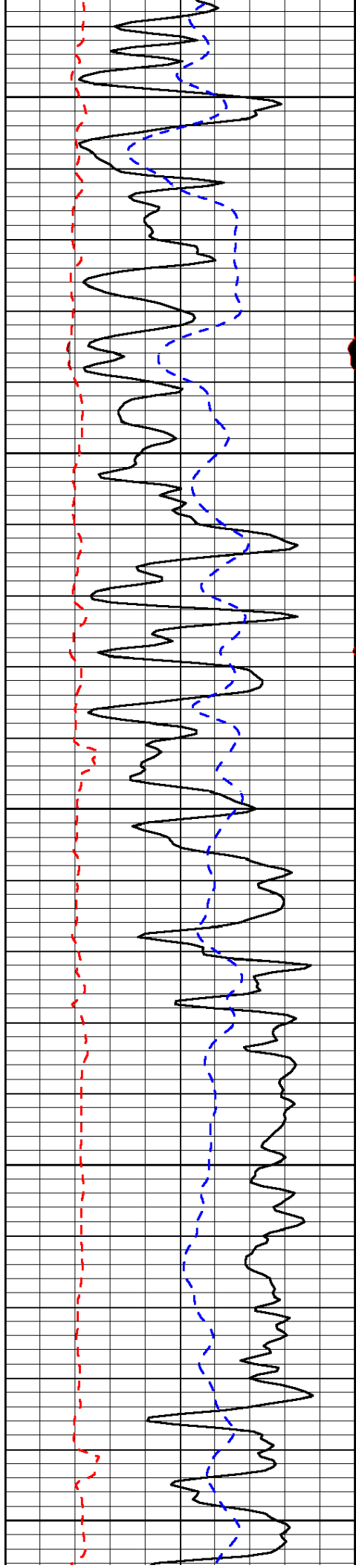
Database File: vesshd.db
 Dataset Pathname: dil/vessstk
 Presentation Format: micro
 Dataset Creation: Mon Apr 07 05:05:38 2014
 Charted by: Depth in Feet scaled 1:240

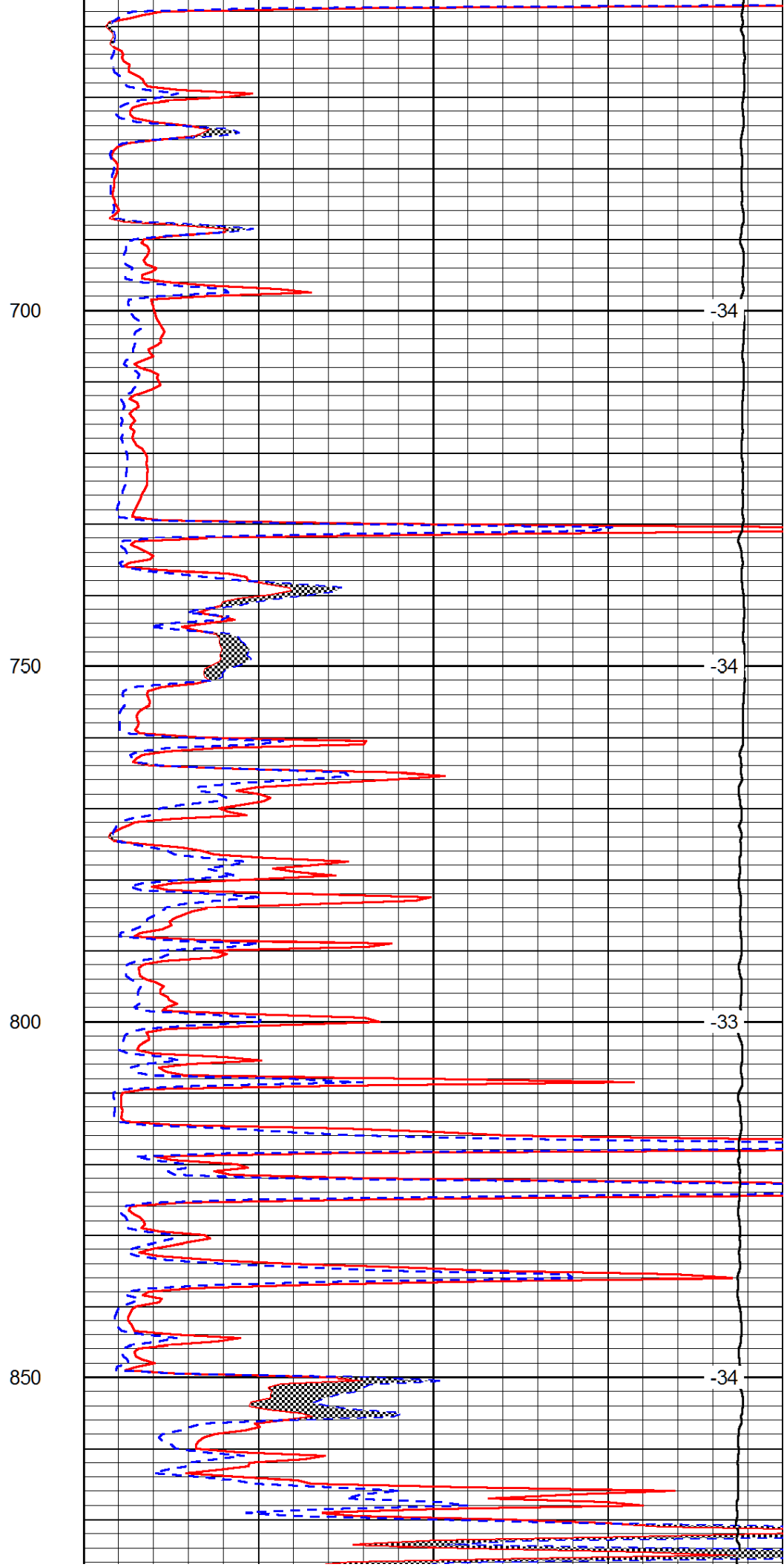
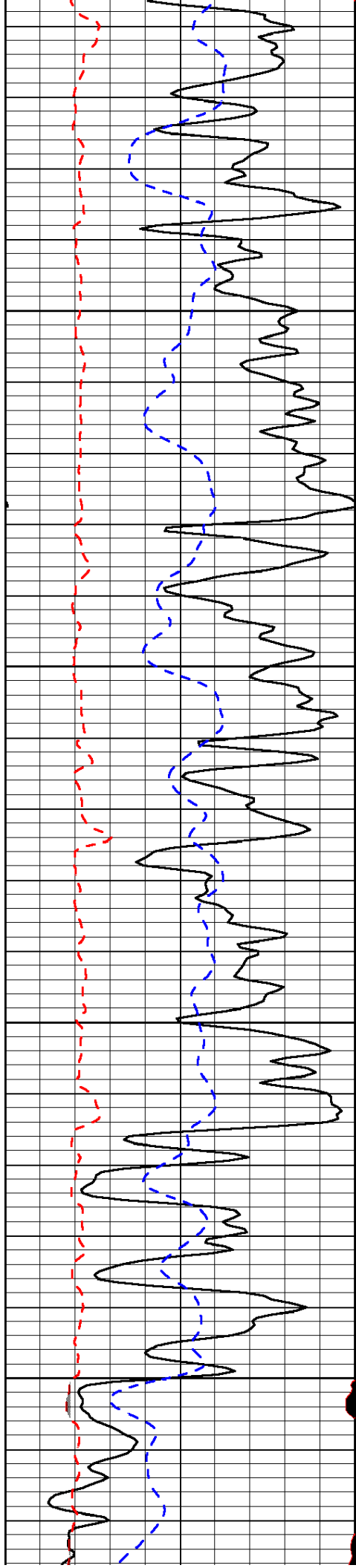
0	Gamma Ray (GAPI)	150
6	MCAL (in)	16
2.875	Mud Cake (in)	7.875
-200	SP (mV)	0

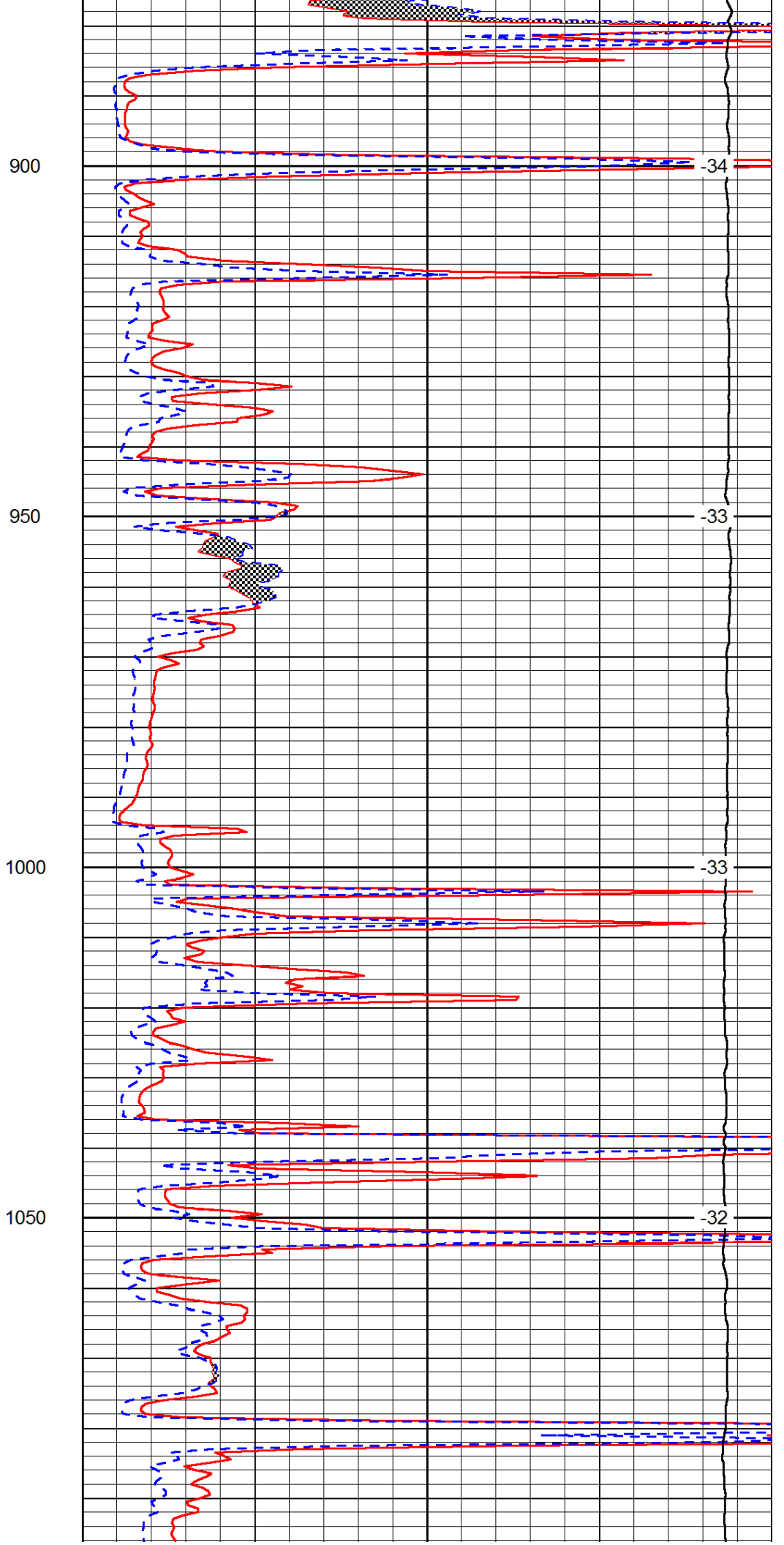
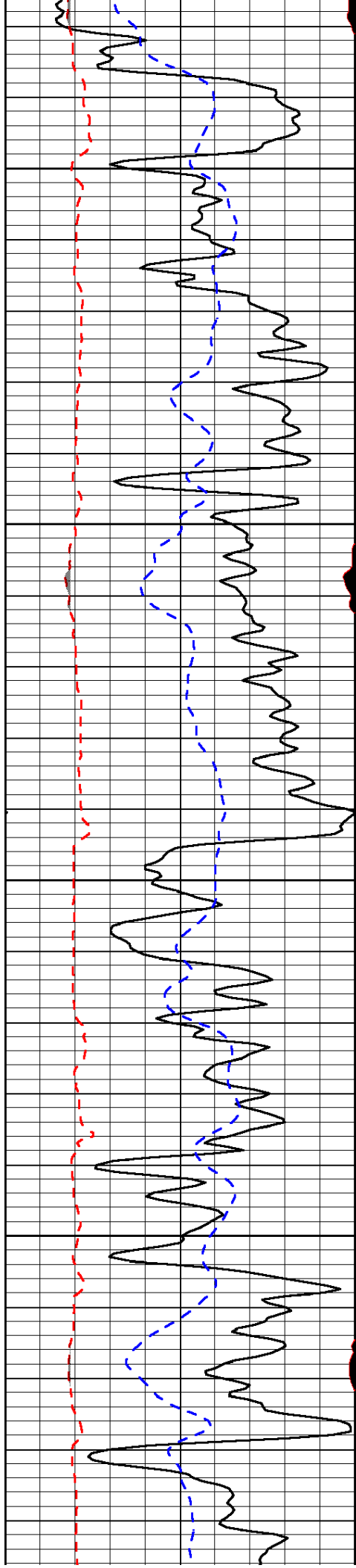
0	Micro Inverse 1 X 1 (Ohm-m)	40
0	Micro Normal 2" (Ohm-m)	40
10000	Line Weight (lb)	0

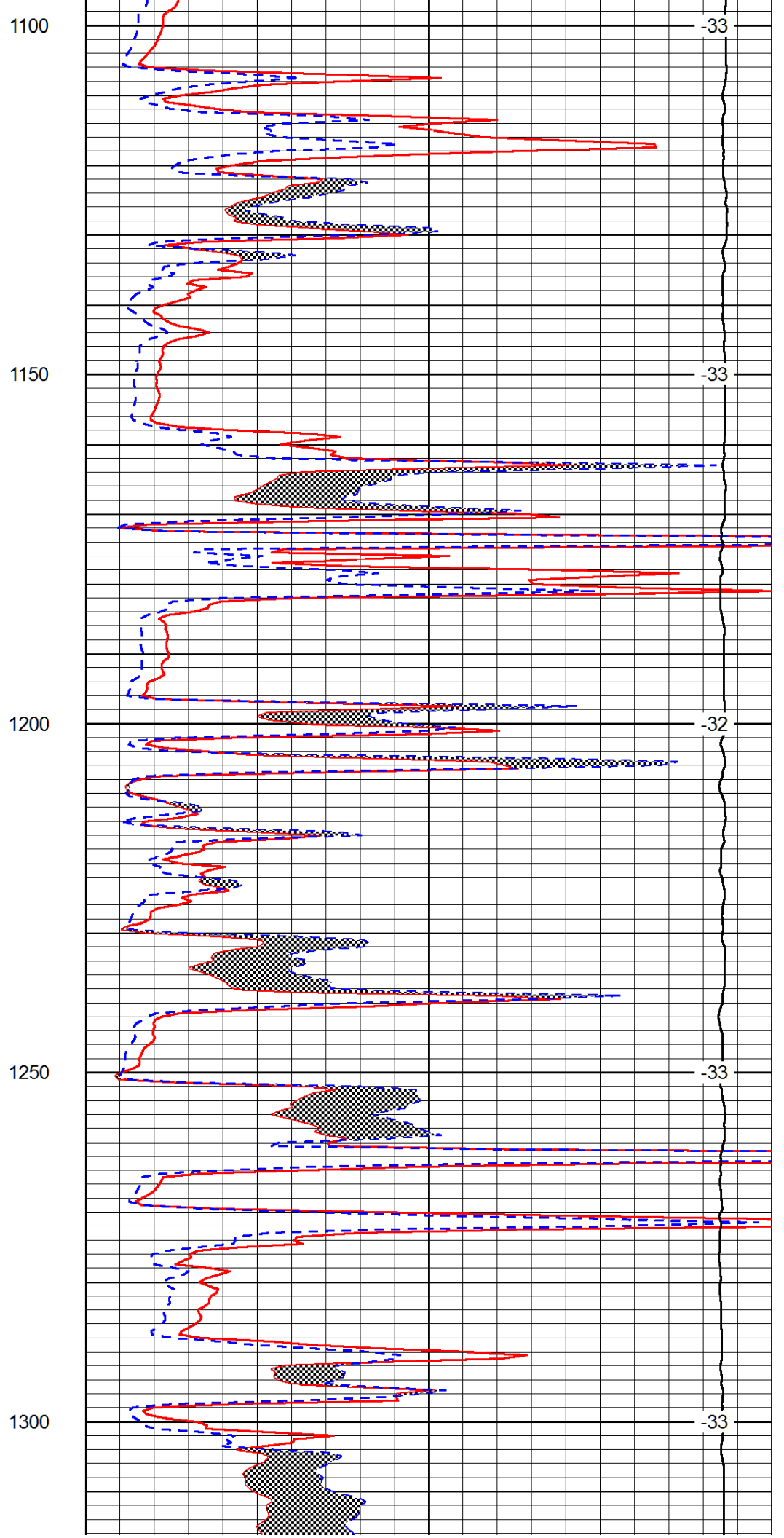
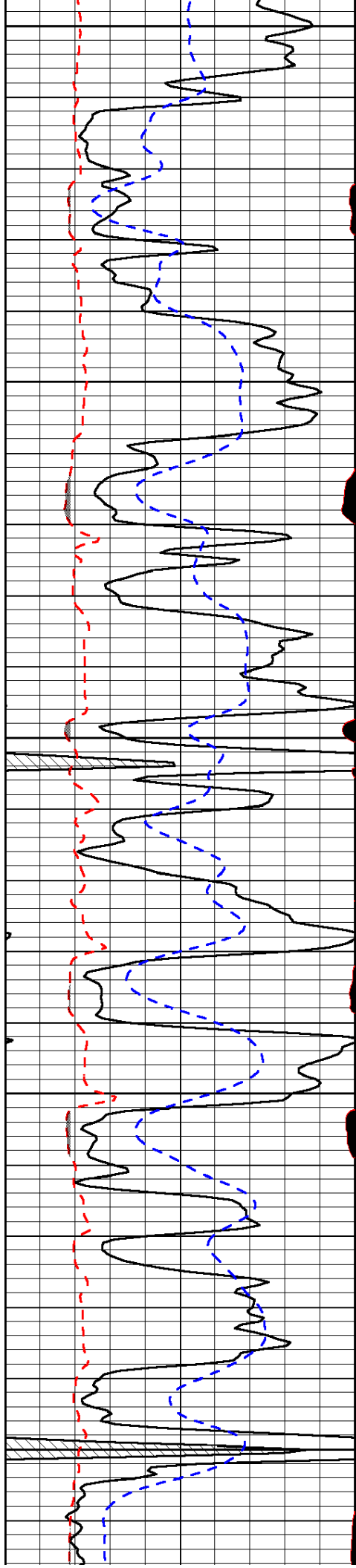
LSPD
(ft/min)

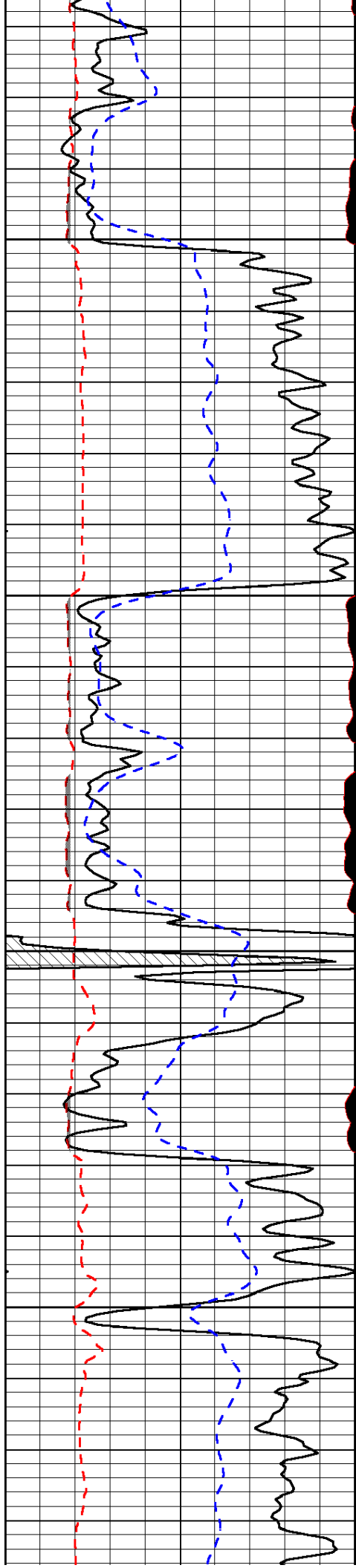










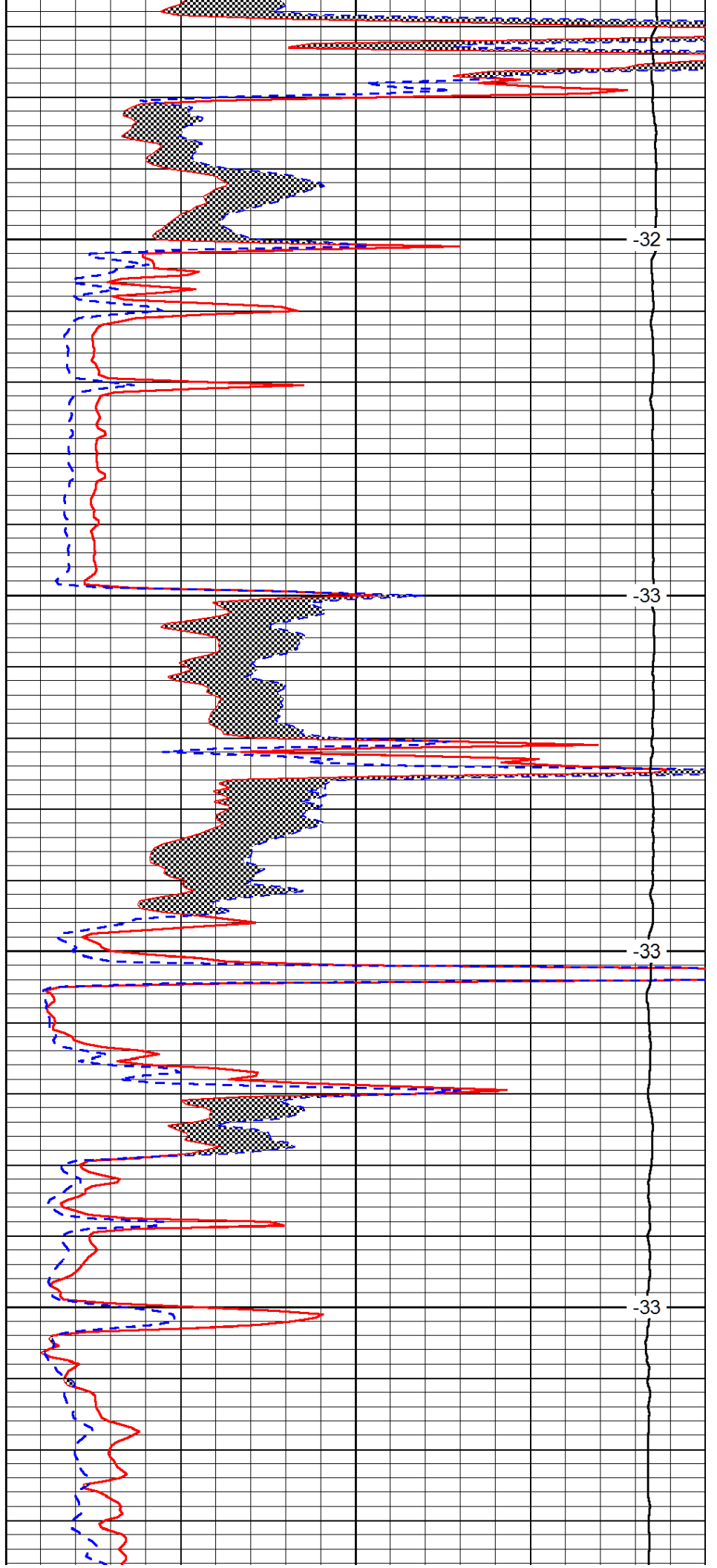


1350

1400

1450

1500

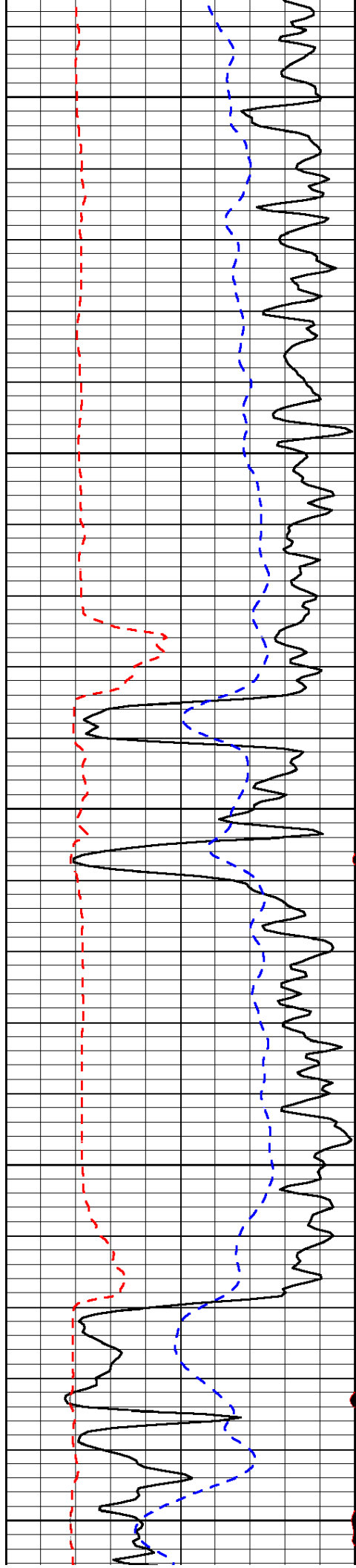


-32

-33

-33

-33



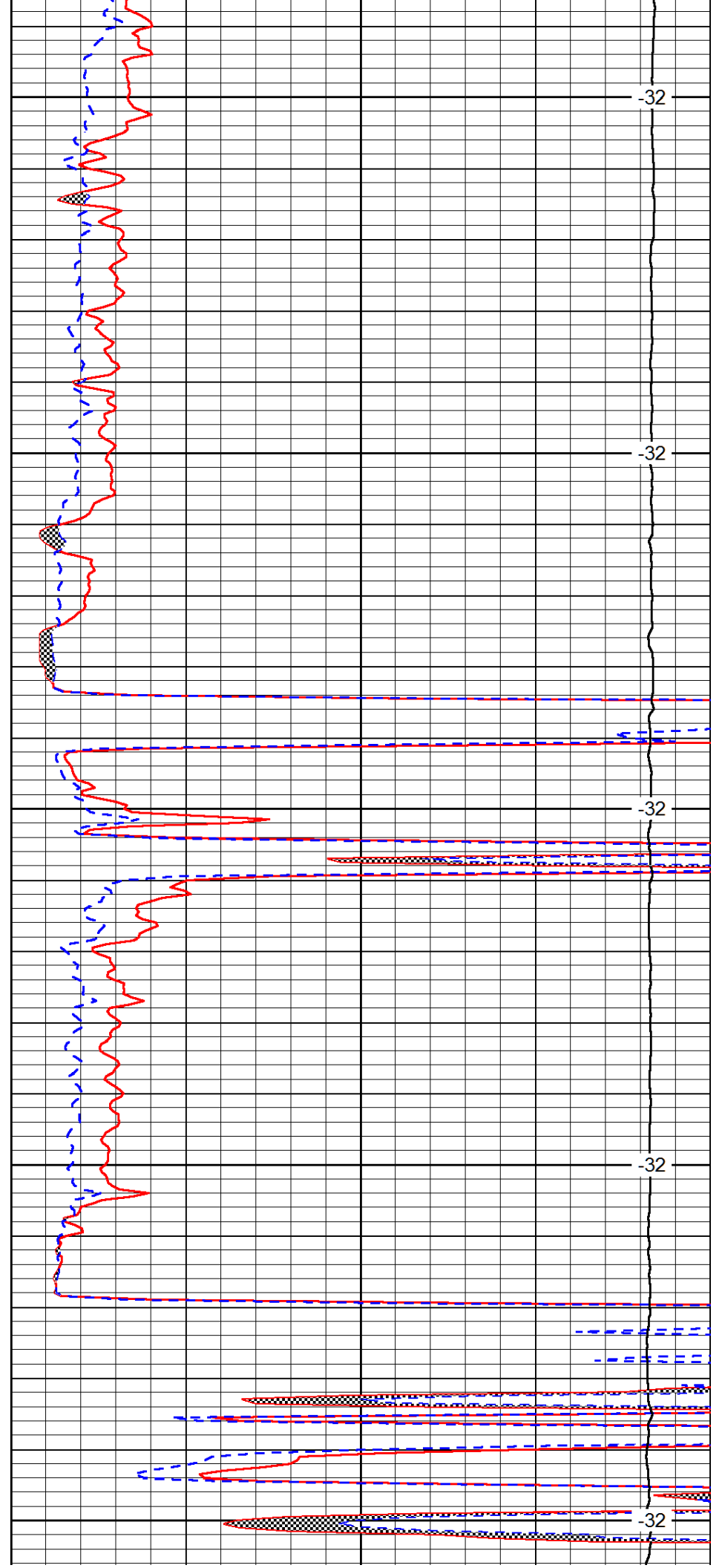
1550

1600

1650

1700

1750



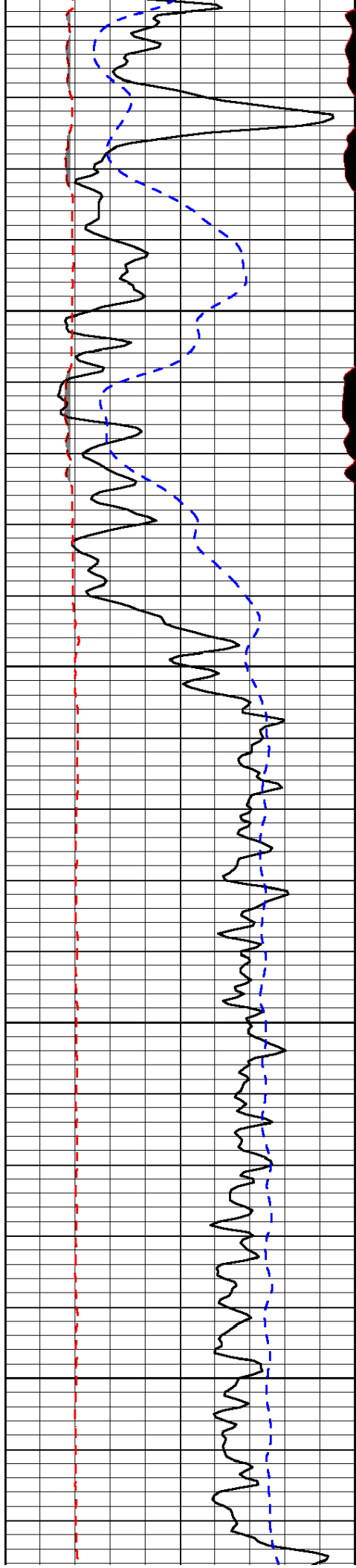
-32

-32

-32

-32

-32

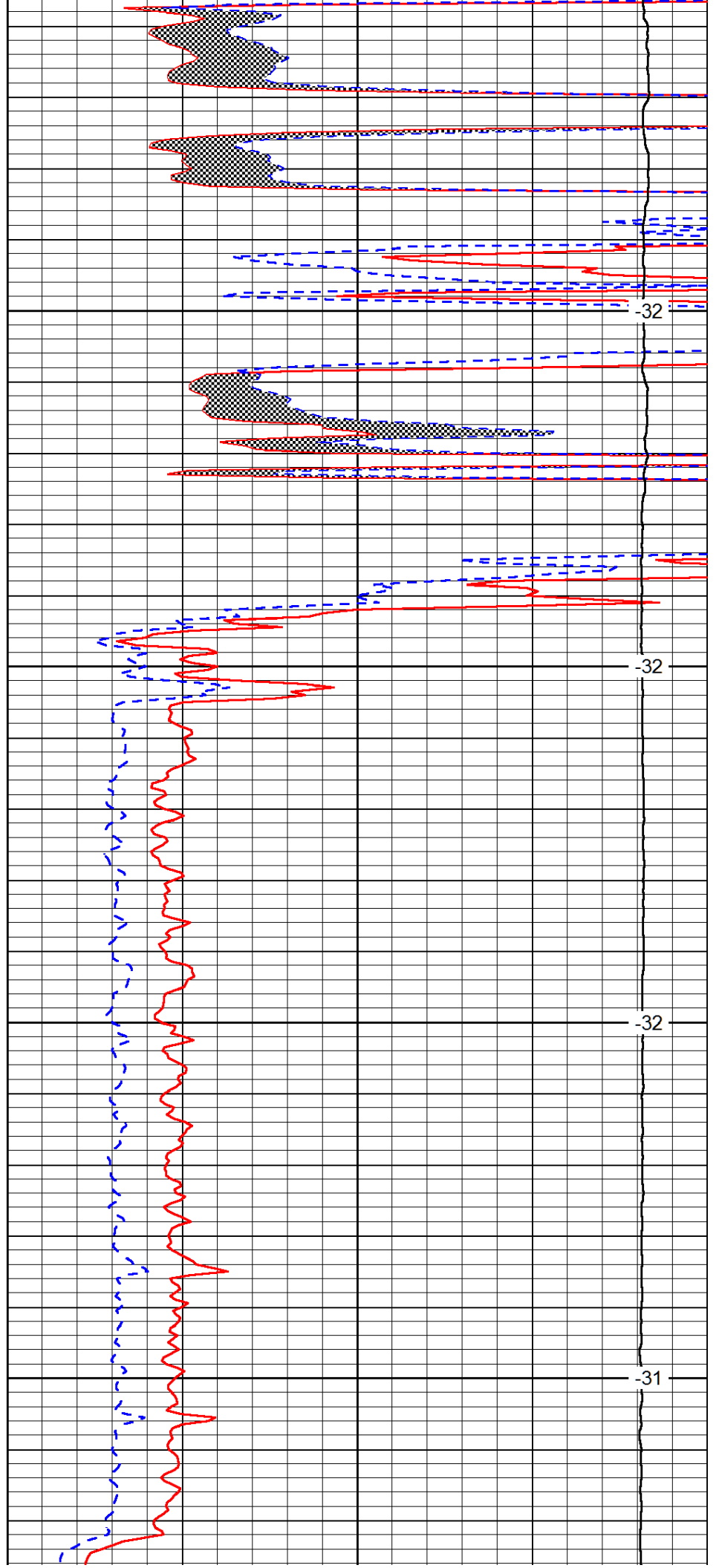


1800

1850

1900

1950

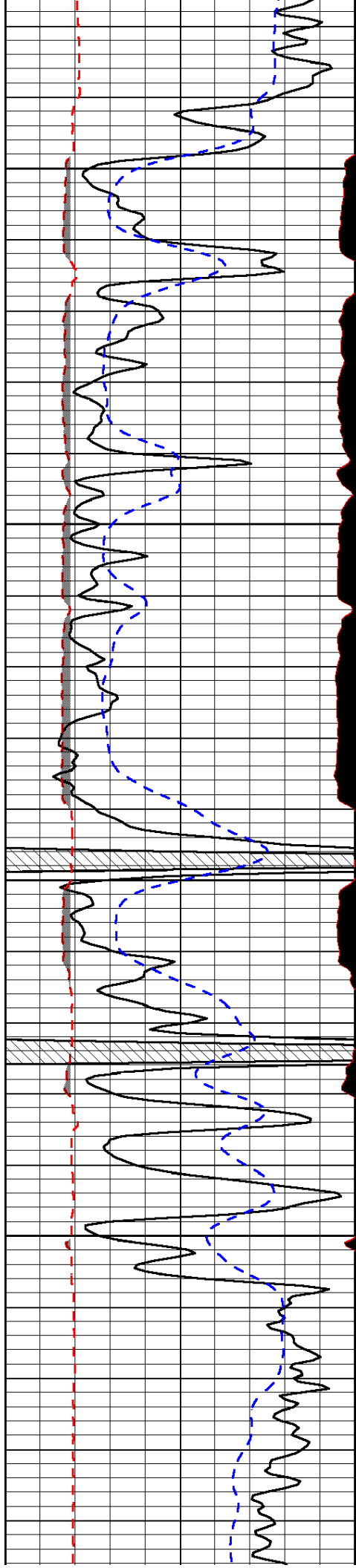


-32

-32

-32

-31

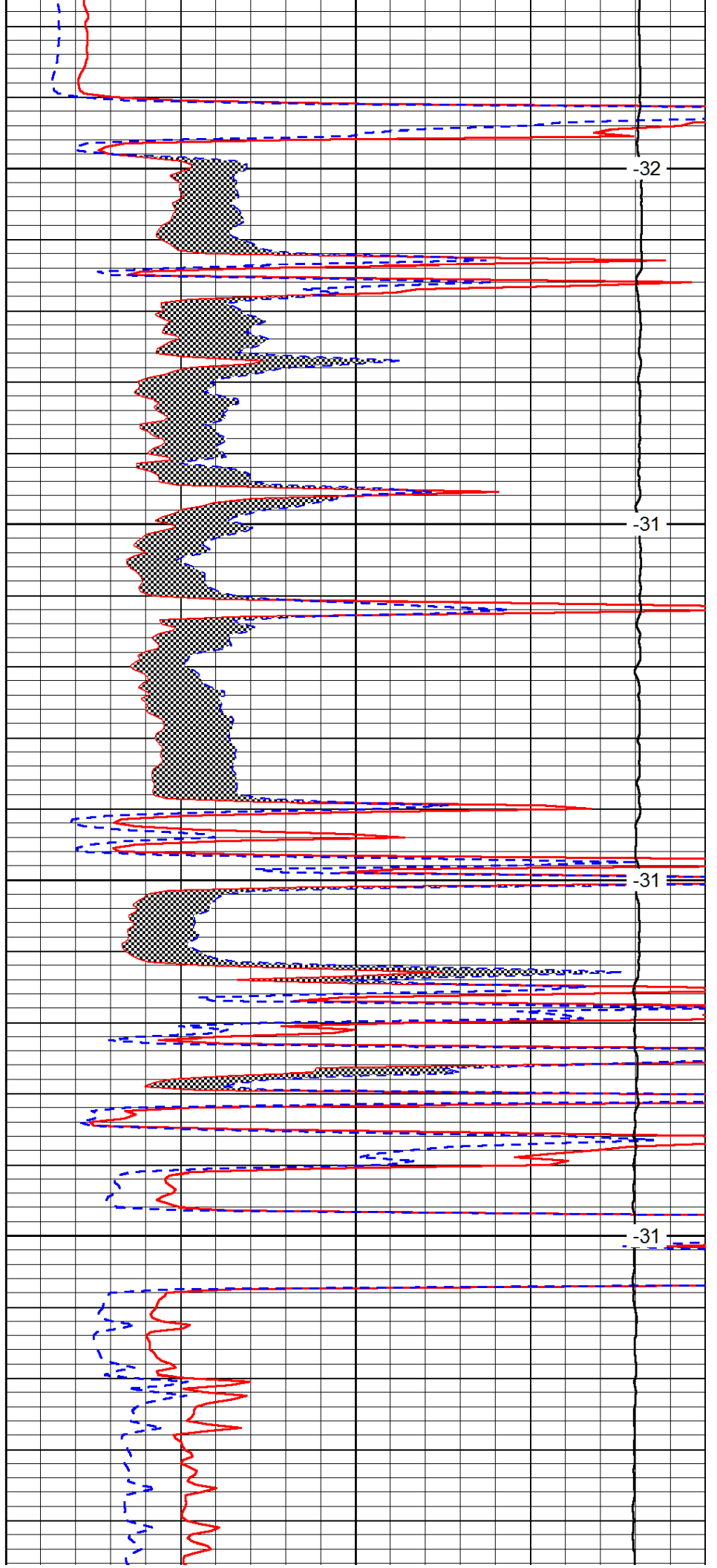


2000

2050

2100

2150

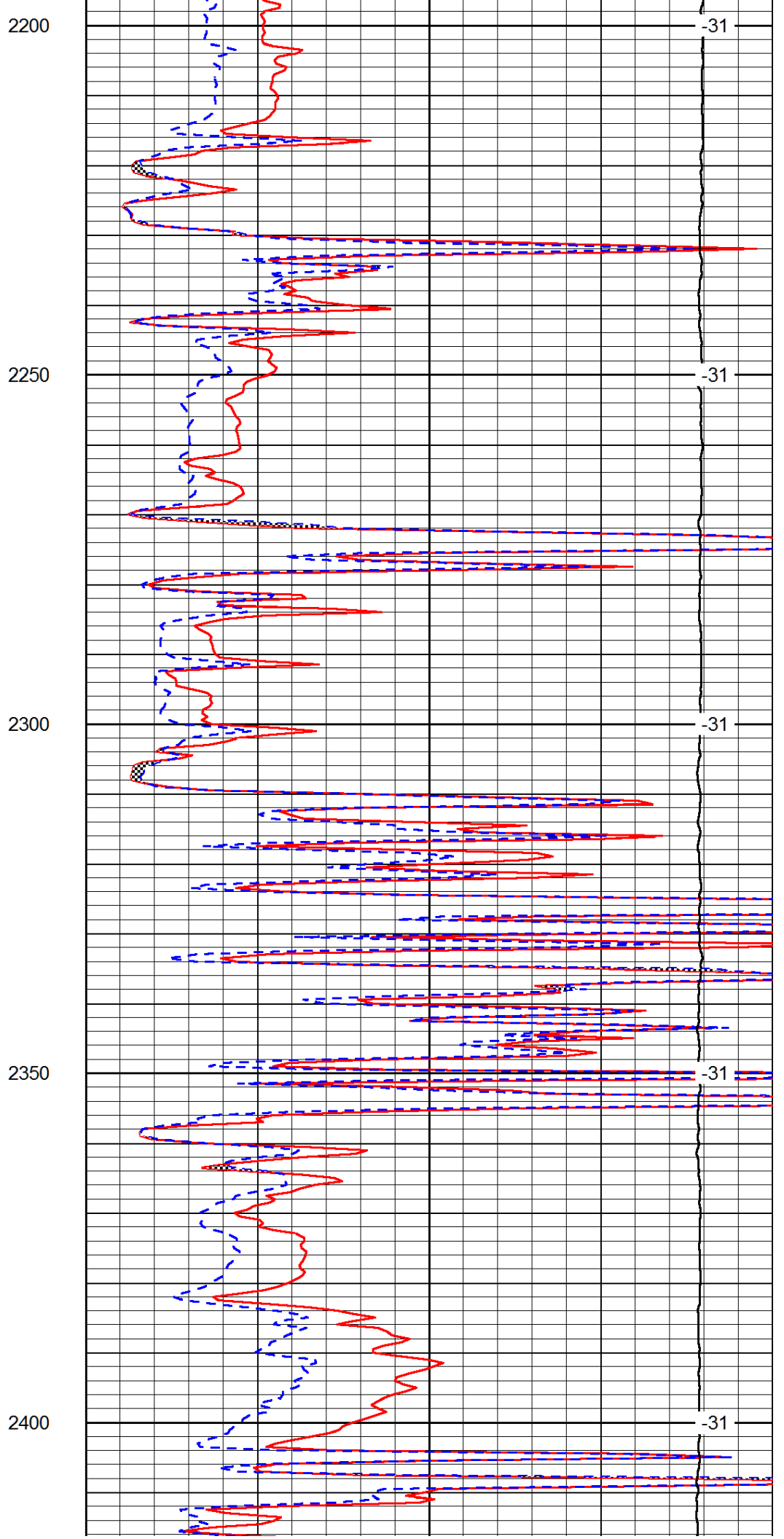
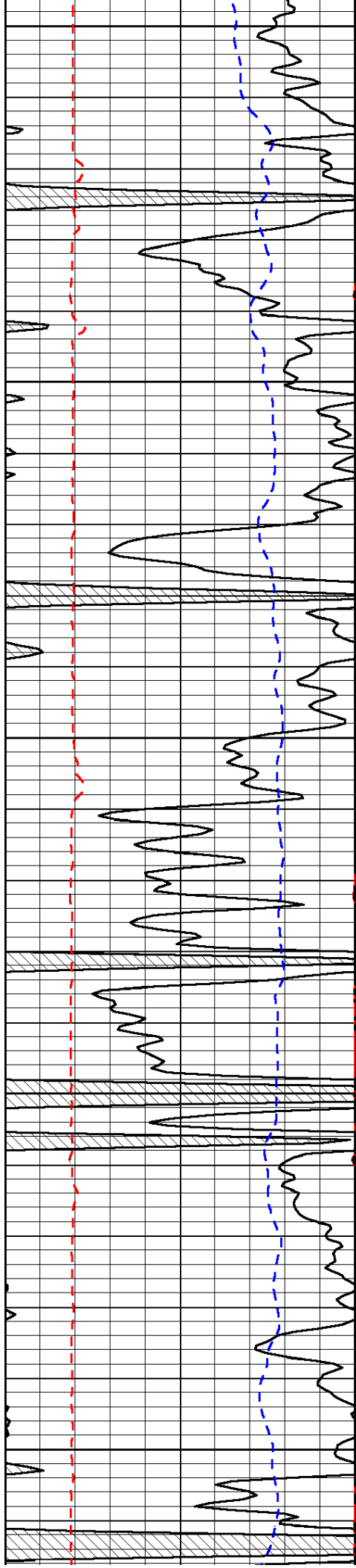


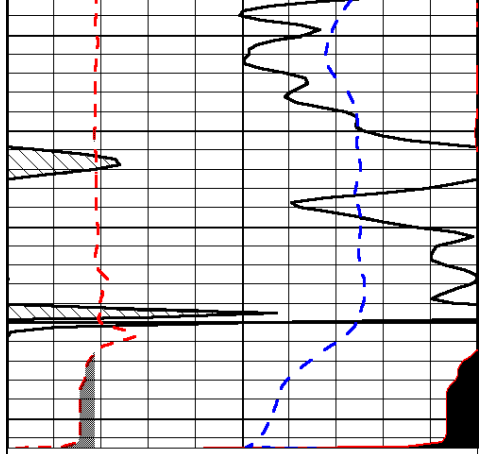
-32

-31

-31

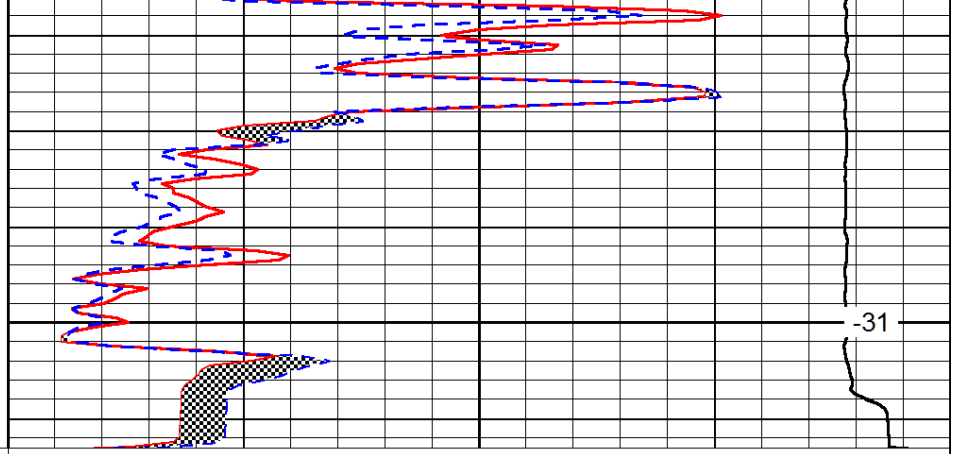
-31





0	Gamma Ray (GAPI)	150
6	MCAL (in)	16
2.875	Mud Cake (in)	7.875
-200	SP (mV)	0

2450



0	Micro Inverse 1 X 1 (Ohm-m)	40
0	Micro Normal 2" (Ohm-m)	40
10000	Line Weight (lb)	0

-31

LSPD
(ft/min)