



Pioneer Energy Services

Dual Compensated Porosity Log

API No.	15-015-24,016-00-00		
Company	Vess Oil Corporation		
Well	Wilson A No.451		
Field	El Dorado		
County	Butler		
Location	SE NW NW NW/4 450' FNL & 450' FWL		
State	Kansas		
Other Services	DIL/MEI		
Sec: 8	Twp: 25S	Rge: 5E	Elevation 1409
Permanent Datum	Ground Level	Kelly Bushing	6 Ft. Above Perm. Datum
Log Measured From	Kelly Bushing		
Drilling Measured From	Kelly Bushing		
Date	4/7/2014		

Run Number	Two		
Type Log	CNL / CDL		
Depth Driller	2460		
Depth Logger	2458		
Bottom Logged Interval	2456		
Top Logged Interval	250		
Type Fluid In Hole	Chemical		
Salinity, PPM CL	700		
Density	9.3		
Level	Full		
Max. Rec. Temp. F	101		
Operating Rig Time	4 1/2 Hours		
Equipment -- Location	17 Days		
Recorded By	C. Desaire		
Witnessed By	Roger Martin		

Borehole Record				Casing Record			
Run No.	Bit	From	To	Size	Wgt.	From	To
One	12.25	00	261	8.625	23#	00	261
Two	7.875	261	TD				

<<< Fold Here >>>

All interpretations are opinions based on inferences from electrical or other measurements and we cannot and do not guarantee the accuracy or correctness of any interpretation, and we shall not, except in the case of gross or willful negligence on our part, be liable or responsible for any loss, costs, damages, or expenses incurred or sustained by anyone resulting from any interpretation made by any of our officers, agents or employees. These interpretations are also subject to our general terms and conditions set out in our current Price Schedule.

Comments

Thank you for using Log-Tech, Inc.
(785) 625-3858

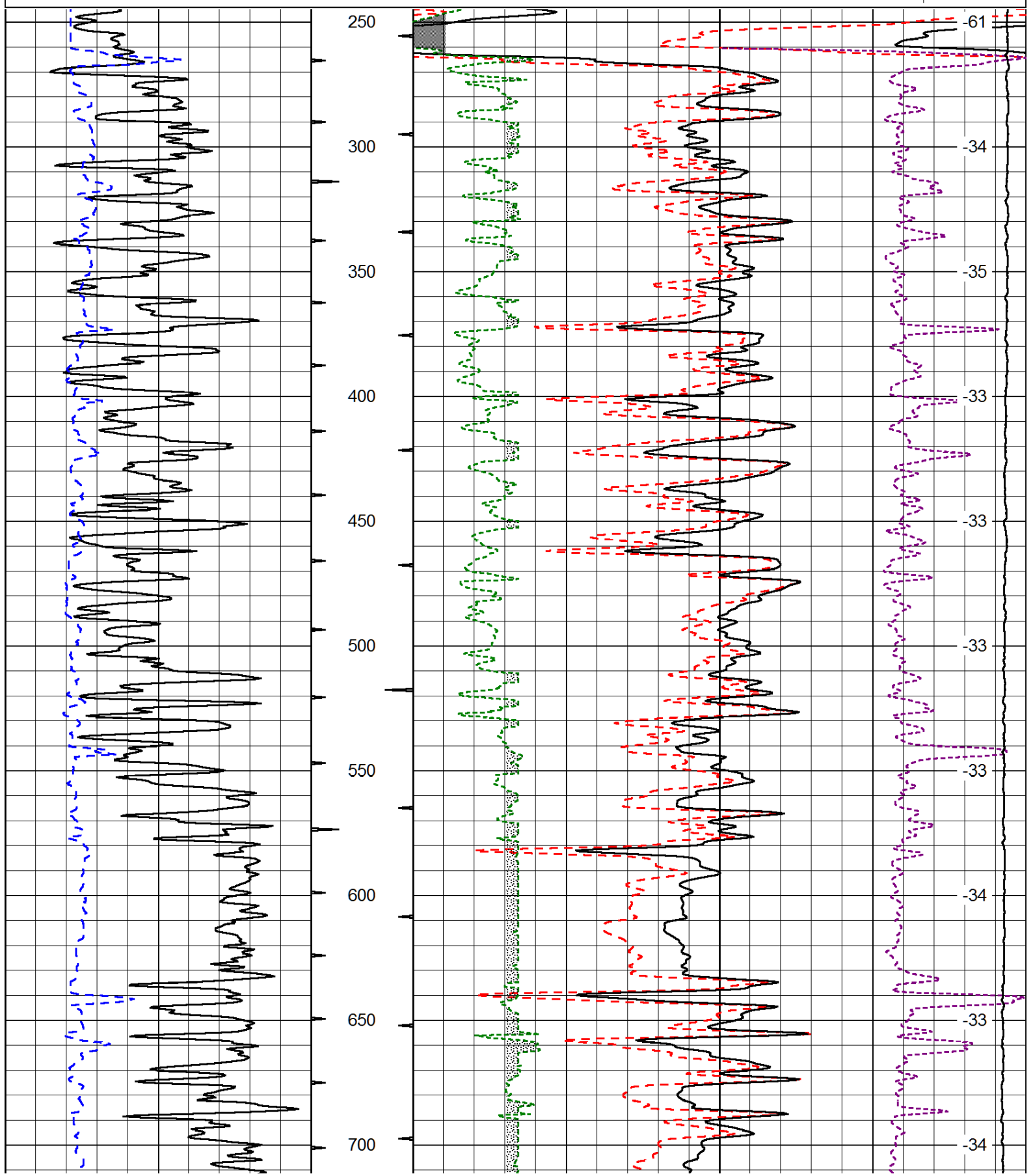
Potwin KS, SE to 50th Rd,
2 E, S Into

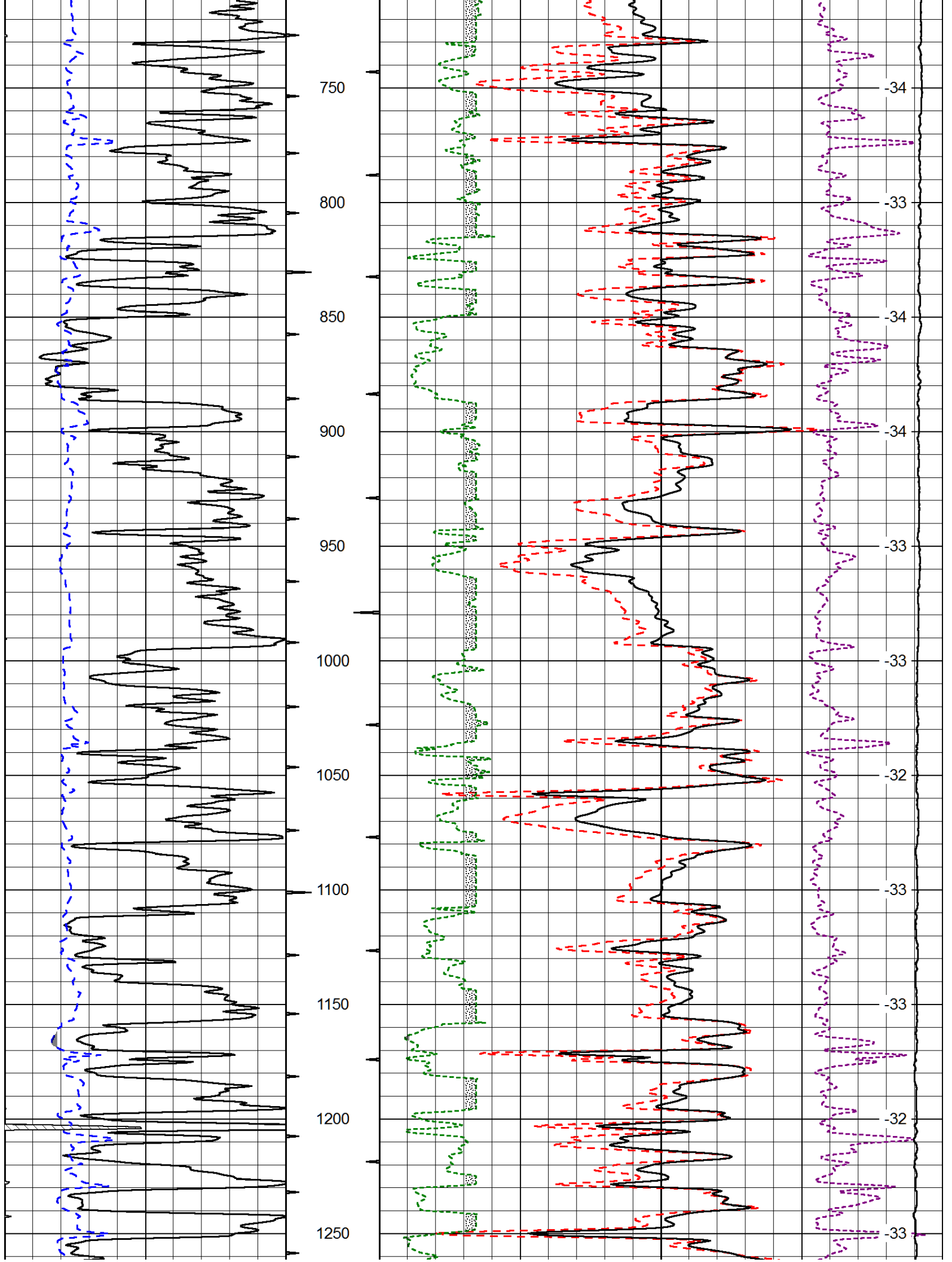
Database File: vesshd.db
 Dataset Pathname: dil/vessstk
 Presentation Format: cdl
 Dataset Creation: Mon Apr 07 05:05:38 2014
 Charted by: Depth in Feet scaled 1:600

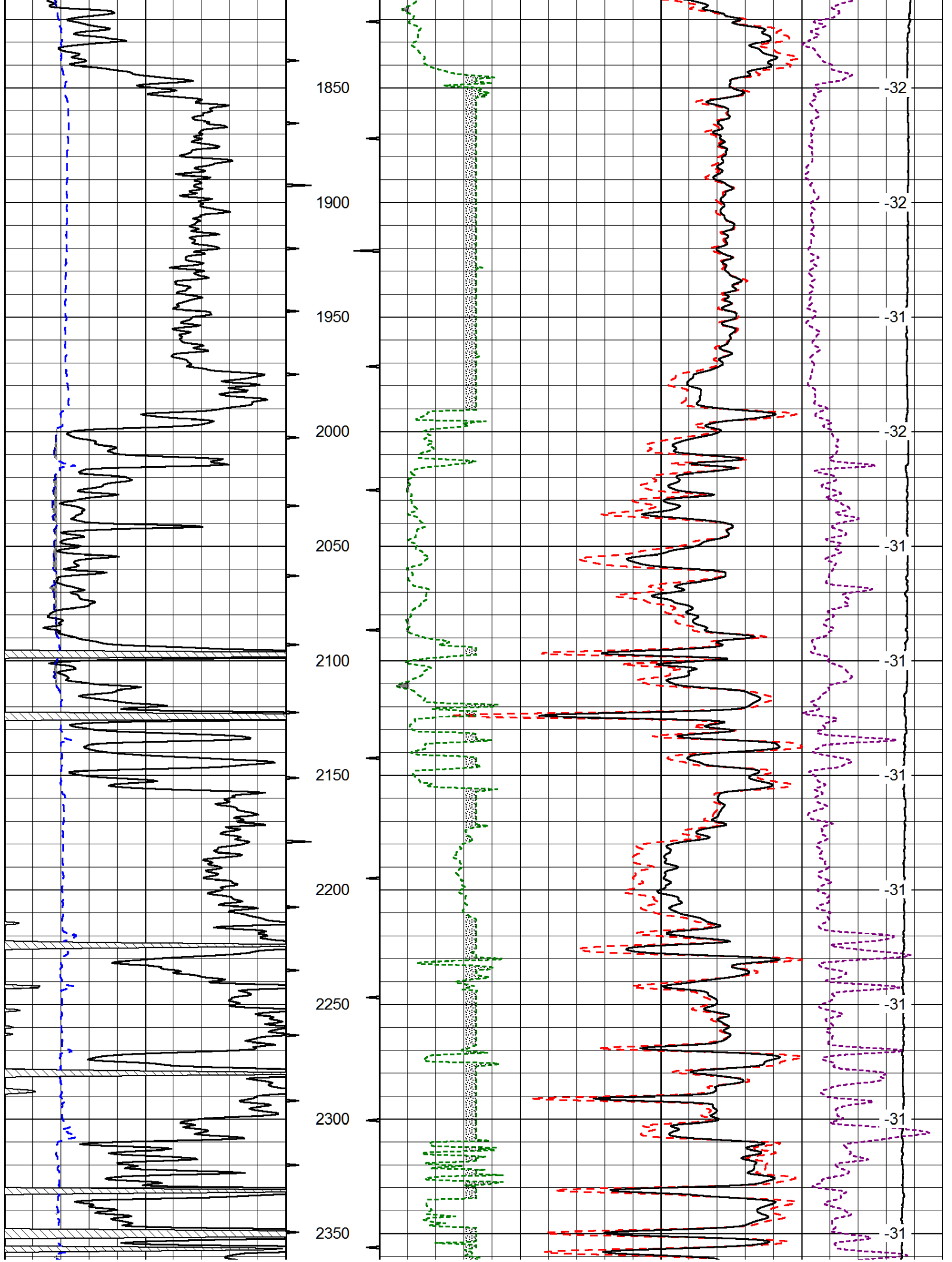
0	Gamma Ray (GAPI)	150
6	Caliper (in)	16

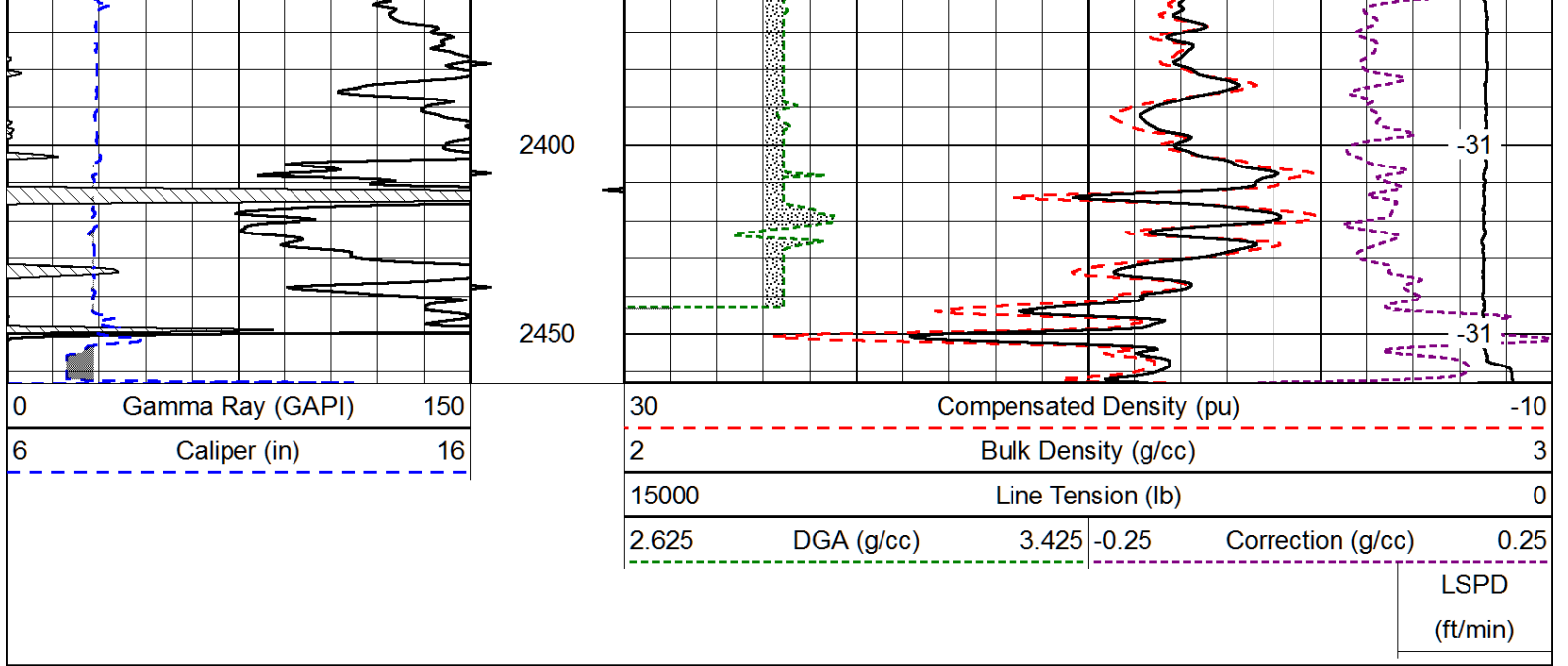
30	Compensated Density (pu)		-10
2	Bulk Density (g/cc)		3
15000	Line Tension (lb)		0
2.625	DGA (g/cc)	3.425	-0.25
		Correction (g/cc)	0.25

LSPD
(ft/min)









Database File: vesshd.db
 Dataset Pathname: dil/vessstk
 Presentation Format: cndlspec
 Dataset Creation: Mon Apr 07 05:05:38 2014
 Charted by: Depth in Feet scaled 1:240

