



Pioneer Energy Services

Dual Induction Log

API No.	15-015-24,016-00-00		
Company	Vess Oil Corporation		
Well	Wilson A No.451		
Field	El Dorado		
County	Butler	State	Kansas
Location	SE NW NW NW/4 450' FNL & 450' FWL		
Sec: 8	Twp: 25S	Rge: 5E	Other Services CNL/CDL MEL

Permanent Datum	Ground Level	Elevation 1409	K.B. 1415
Log Measured From	Kelly Bushing	6 Ft. Above Perm. Datum	D.F. 1409
Drilling Measured From	Kelly Bushing		G.L. 1409
Date	4/7/2014		
Run Number	One		
Depth Driller	2460		
Depth Logger	2458		
Bottom Logged Interval	2457		
Top Log Interval	250		
Casing Driller	8.625 @ 261		
Casing Logger	260		
Bit Size	7.875		
Type Fluid in Hole	Chemical		
Salinity,ppm CL	700		
Density / Viscosity	9.3	50	
pH / Fluid Loss	9.5	9.0	
Source of Sample	Flowline		
Rm @ Meas. Temp	1.3	@ 62	
Rmf @ Meas. Temp	.98	@ 62	
Rmc @ Meas. Temp	1.76	@ 62	
Source of Rmf / Rmc	Charts		
Rm @ BHT	.8	@ 101	
Operating Rig Time	4 1/2 Hours		
Max Rec. Temp. F	101		
Equipment Number	17		
Location	Hays		
Recorded By	C. Desaire		
Witnessed By	Roger Martin		

<<< Fold Here >>>

All interpretations are opinions based on inferences from electrical or other measurements and we cannot and do not guarantee the accuracy or correctness of any interpretation, and we shall not, except in the case of gross or willful negligence on our part, be liable or responsible for any loss, costs, damages, or expenses incurred or sustained by anyone resulting from any interpretation made by any of our officers, agents or employees. These interpretations are also subject to our general terms and conditions set out in our current Price Schedule.

Comments

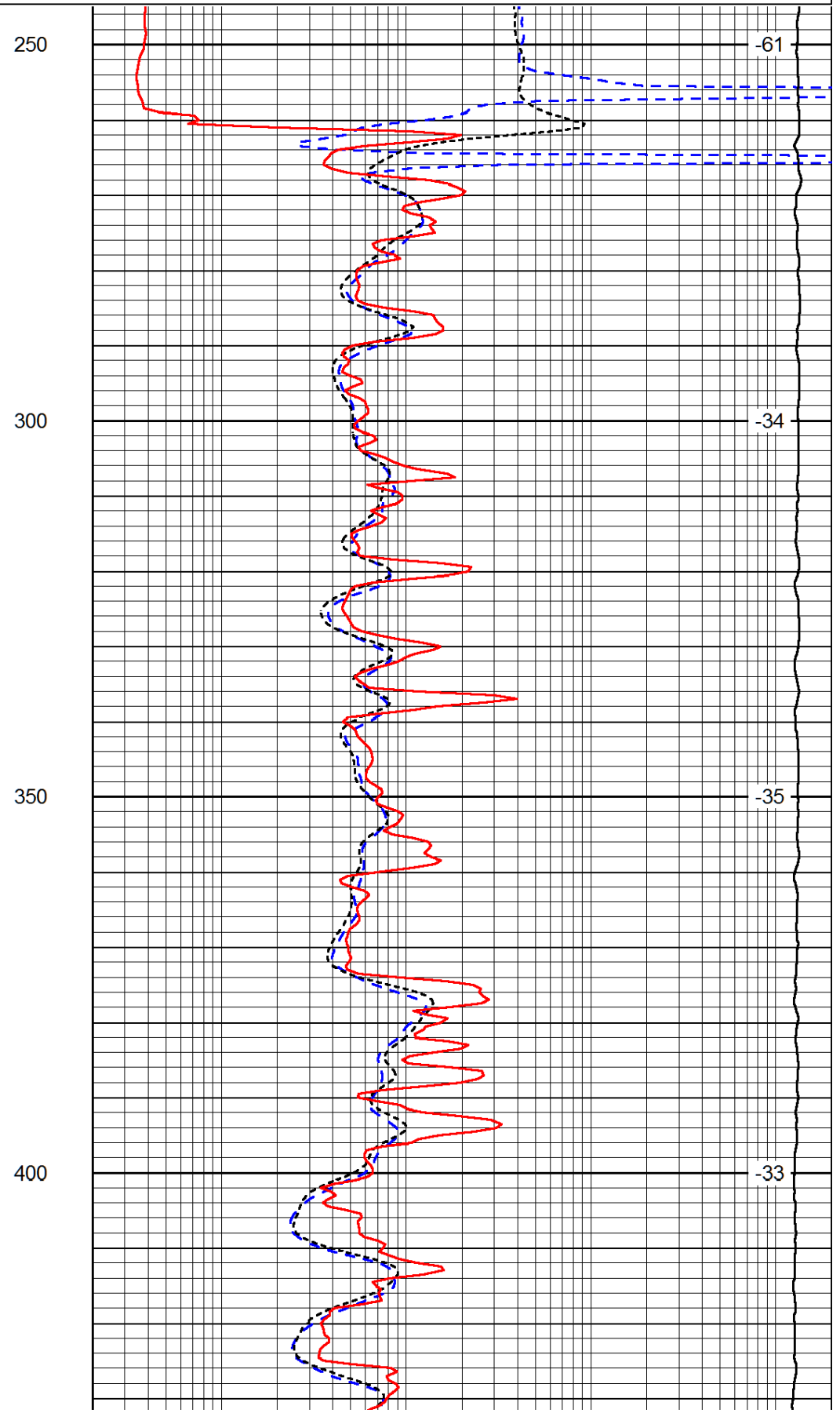
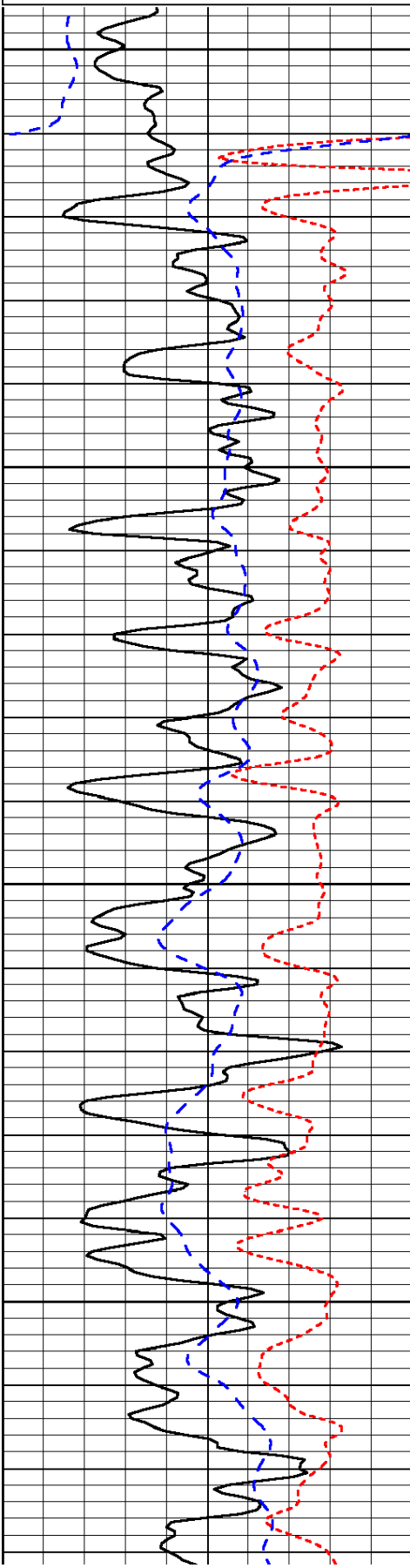
Thank you for using Log-Tech, Inc.
 (785) 625-3858
 Potwin KS, SE to 50th Rd,
 2 E, S Into

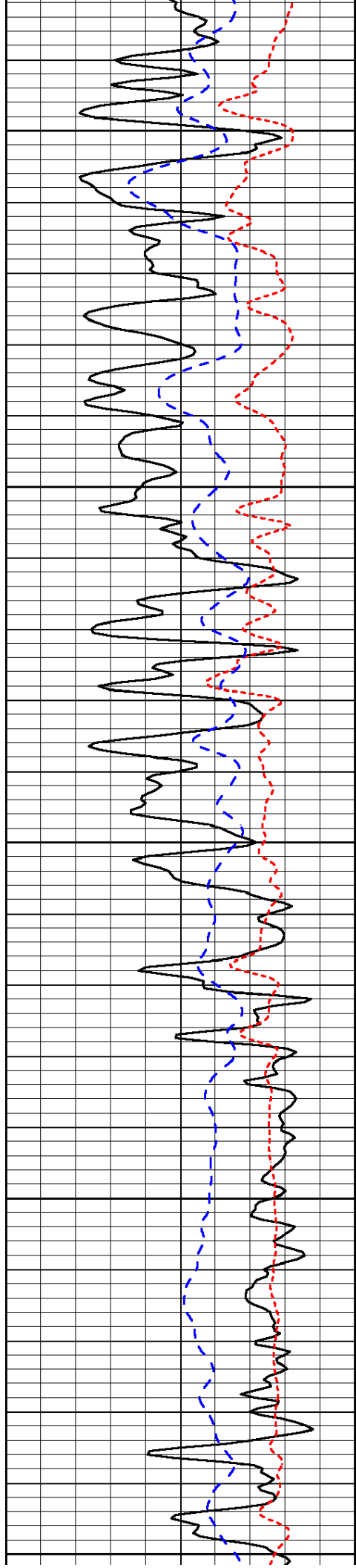
Database File: vesshd.db
 Dataset Pathname: dil/vessstk
 Presentation Format: dil
 Dataset Creation: Mon Apr 07 05:05:38 2014
 Charted by: Depth in Feet scaled 1:240

0	Gamma Ray (GAPI)	150
-160	RXO/RT	40
-200	SP (mV)	0

0.2	Deep Resistivity (Ohm-m)	2000
0.2	Medium Resistivity (Ohm-m)	2000
0.2	Shallow Resistivity (Ohm-m)	2000
10000	Line Tension (lb)	0

LSPD
(ft/min)





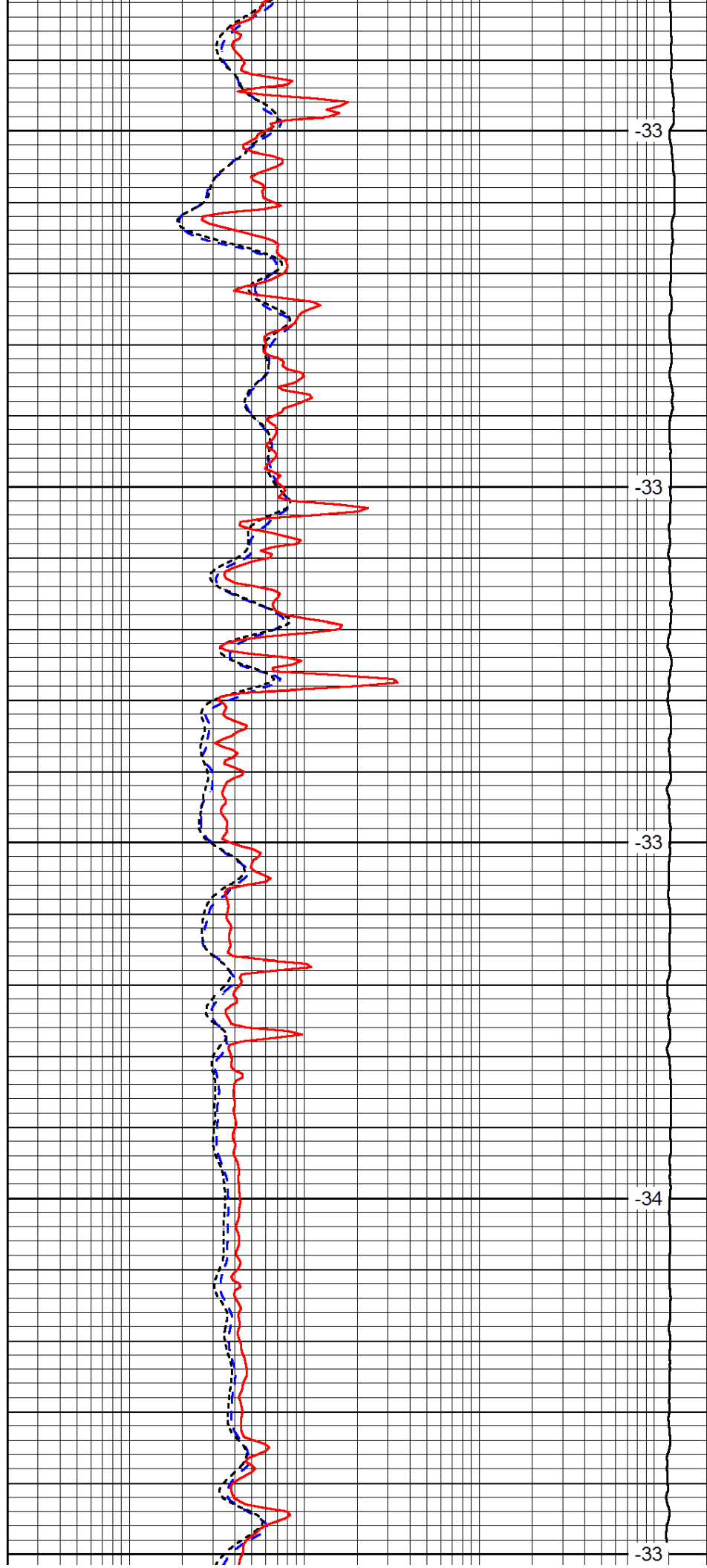
450

500

550

600

650



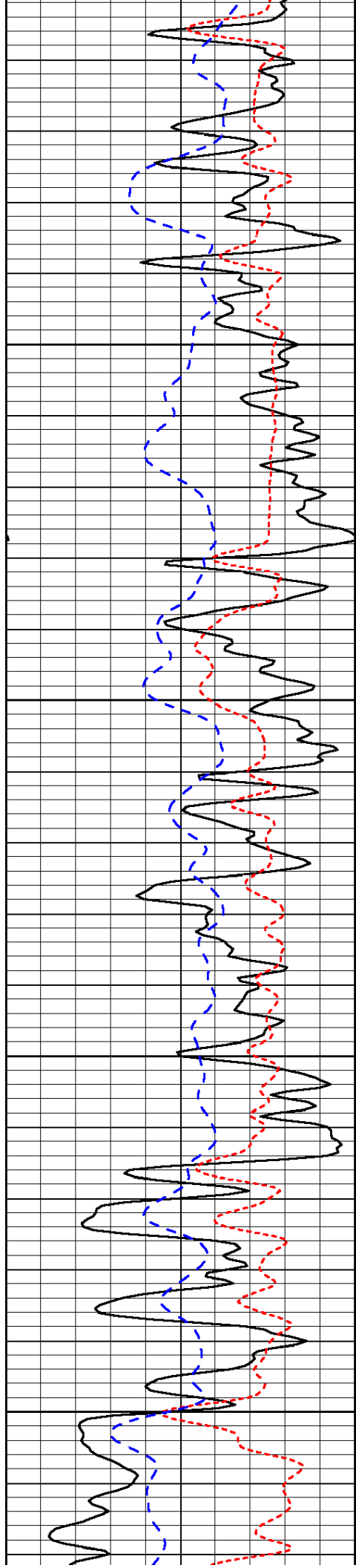
-33

-33

-33

-34

-33

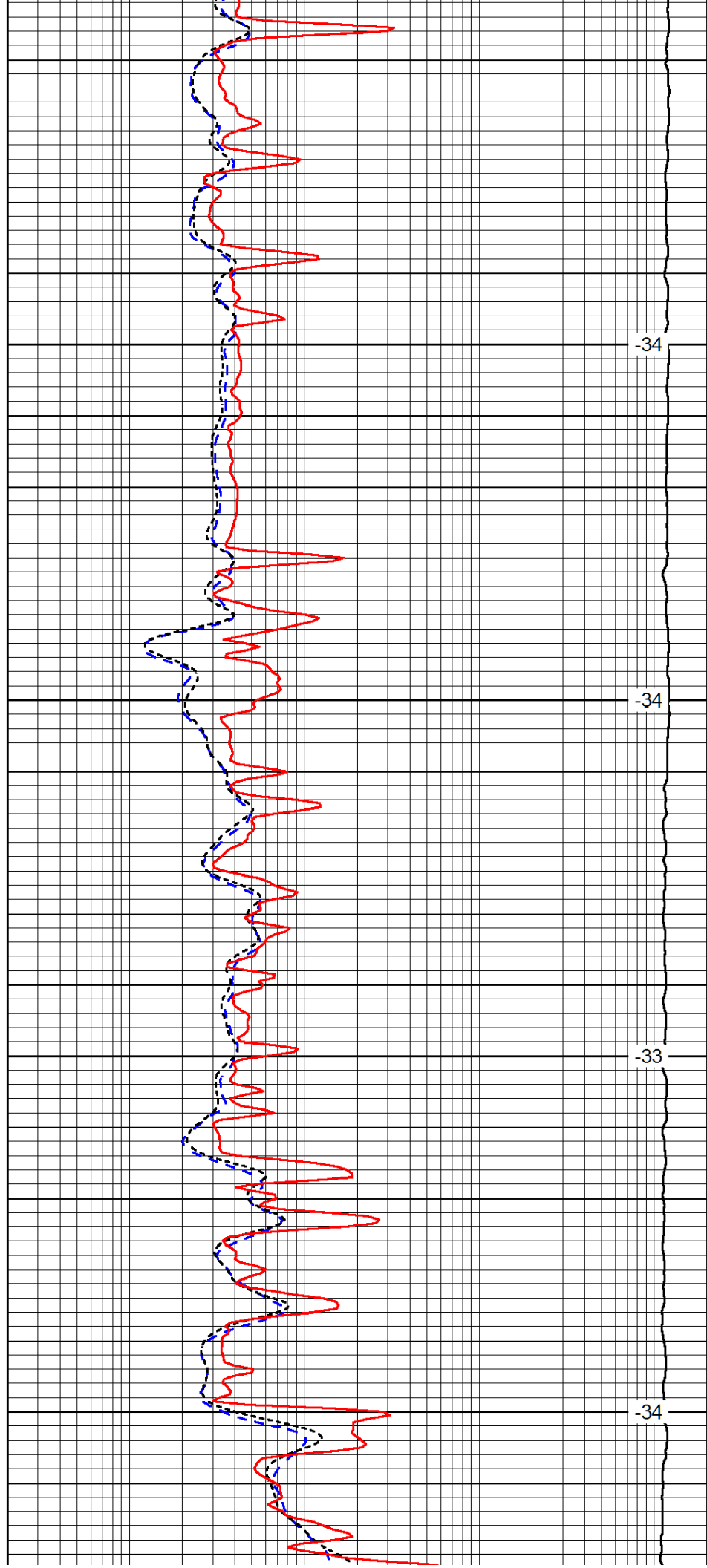


700

750

800

850

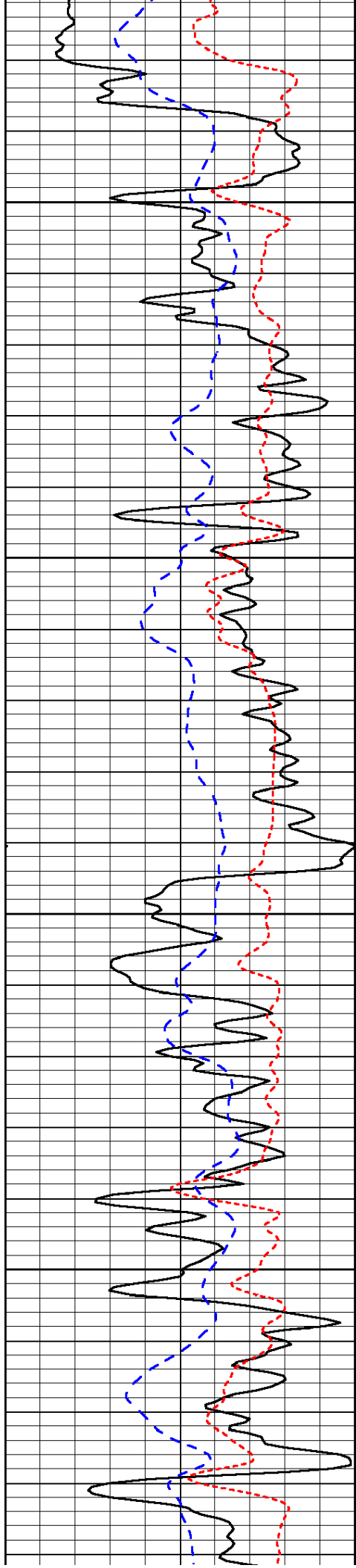


-34

-34

-33

-34

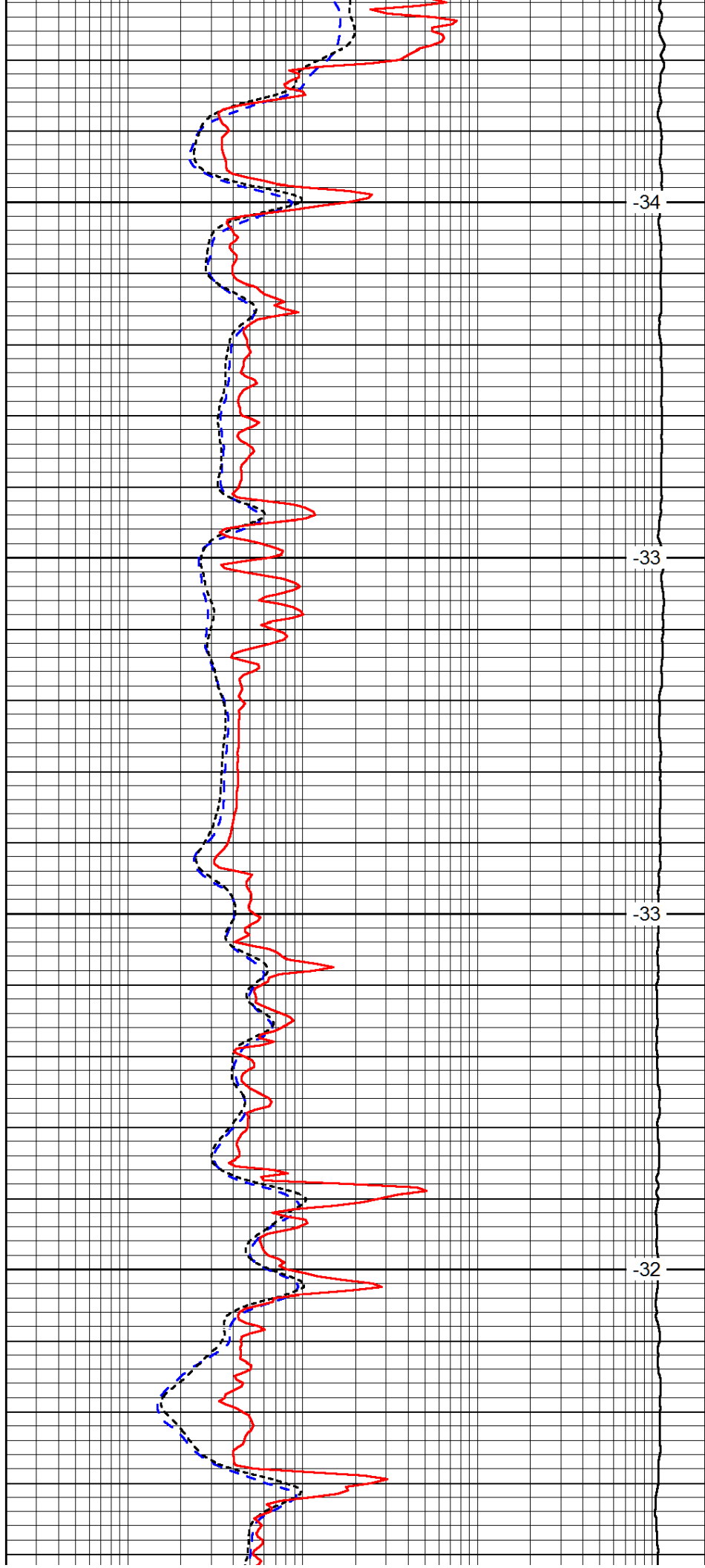


900

950

1000

1050

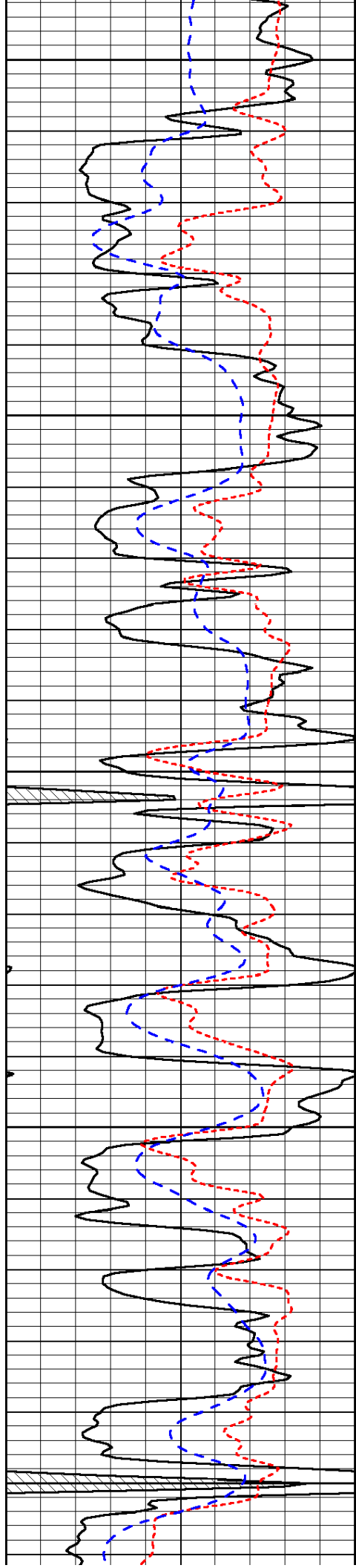


-34

-33

-33

-32



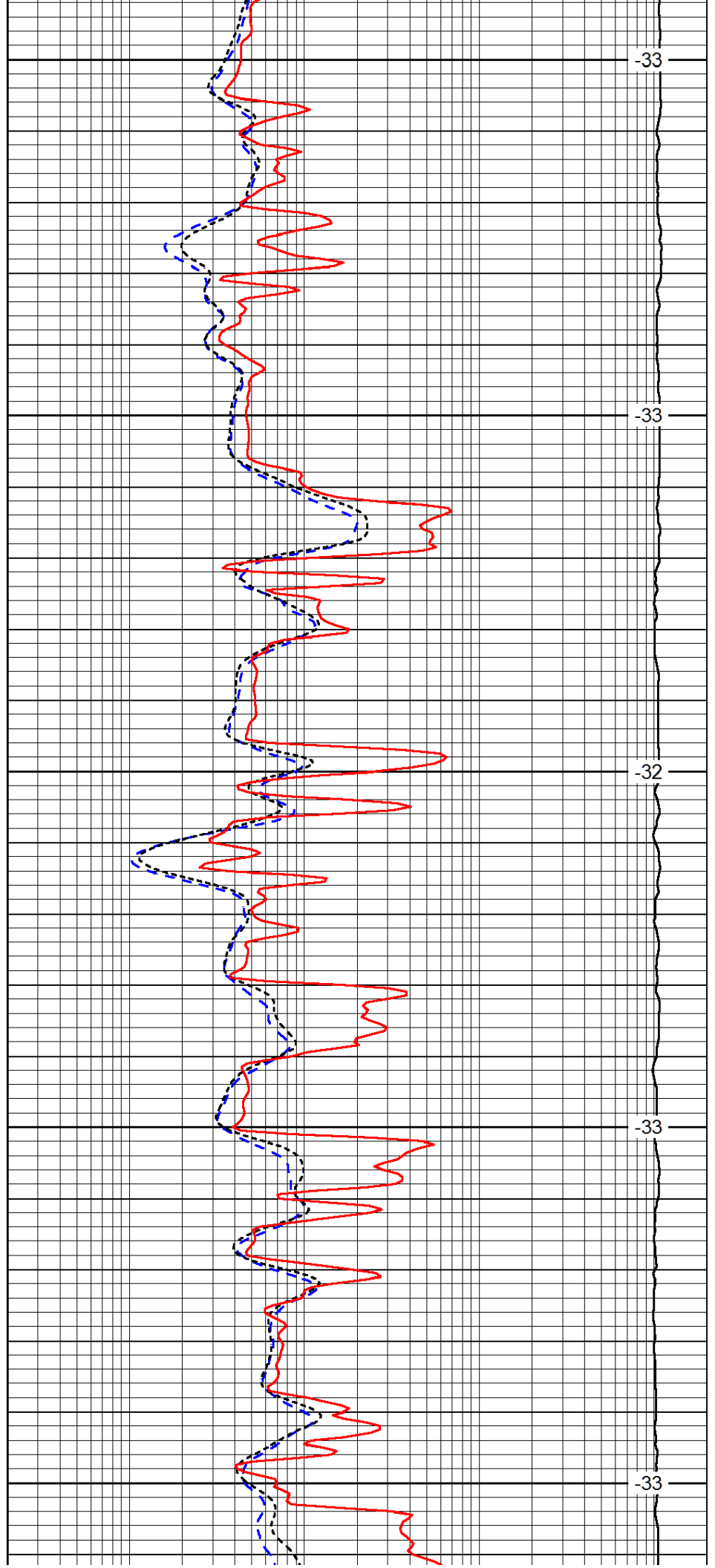
1100

1150

1200

1250

1300



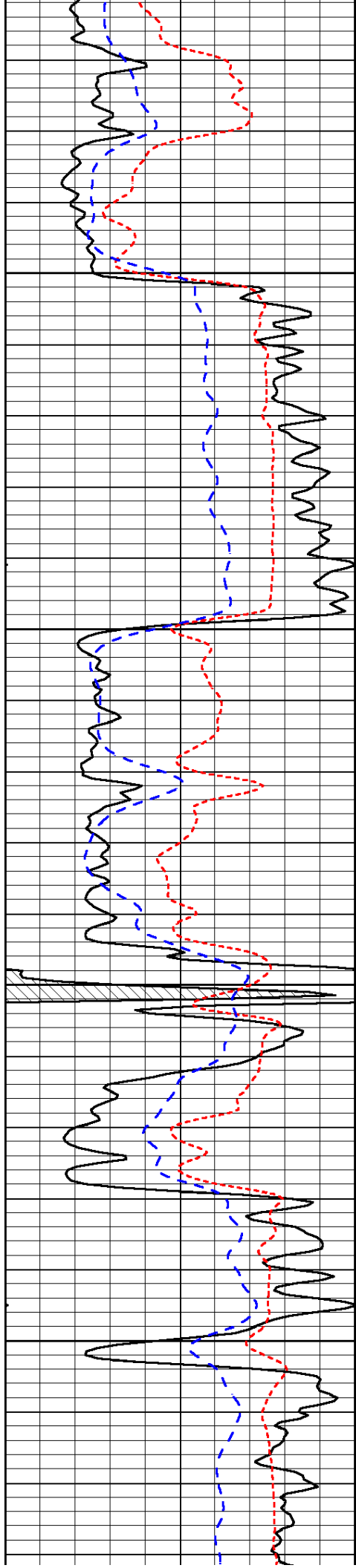
-33

-33

-32

-33

-33

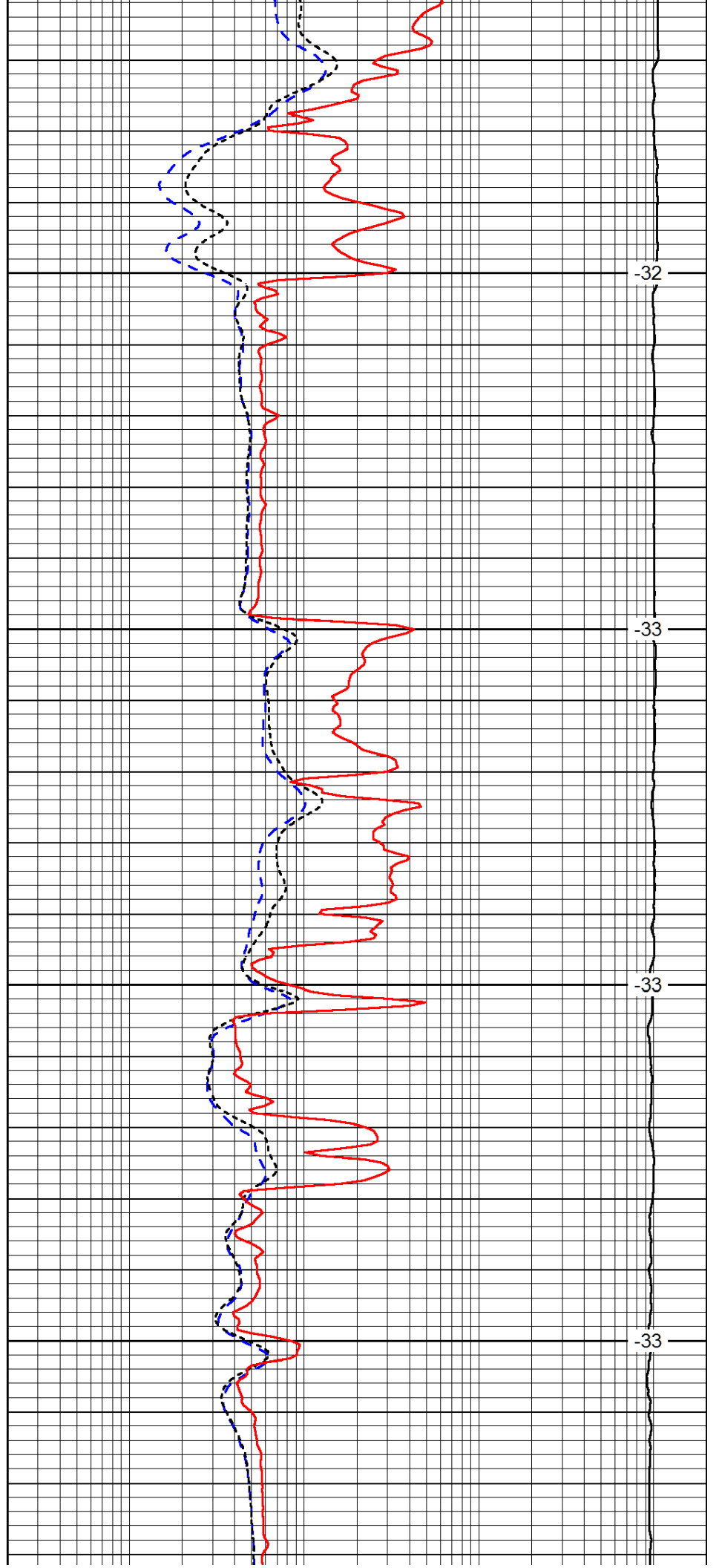


1350

1400

1450

1500

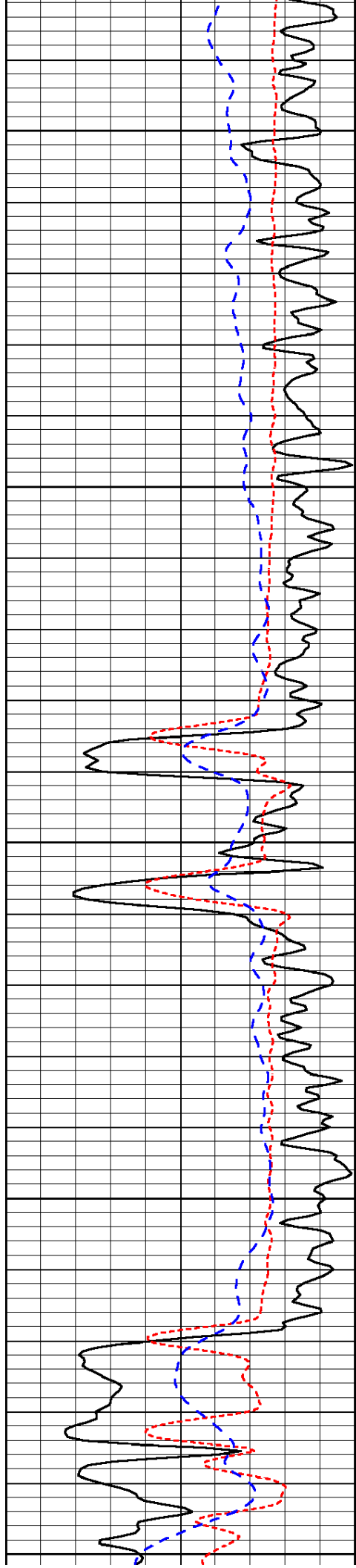


-32

-33

-33

-33



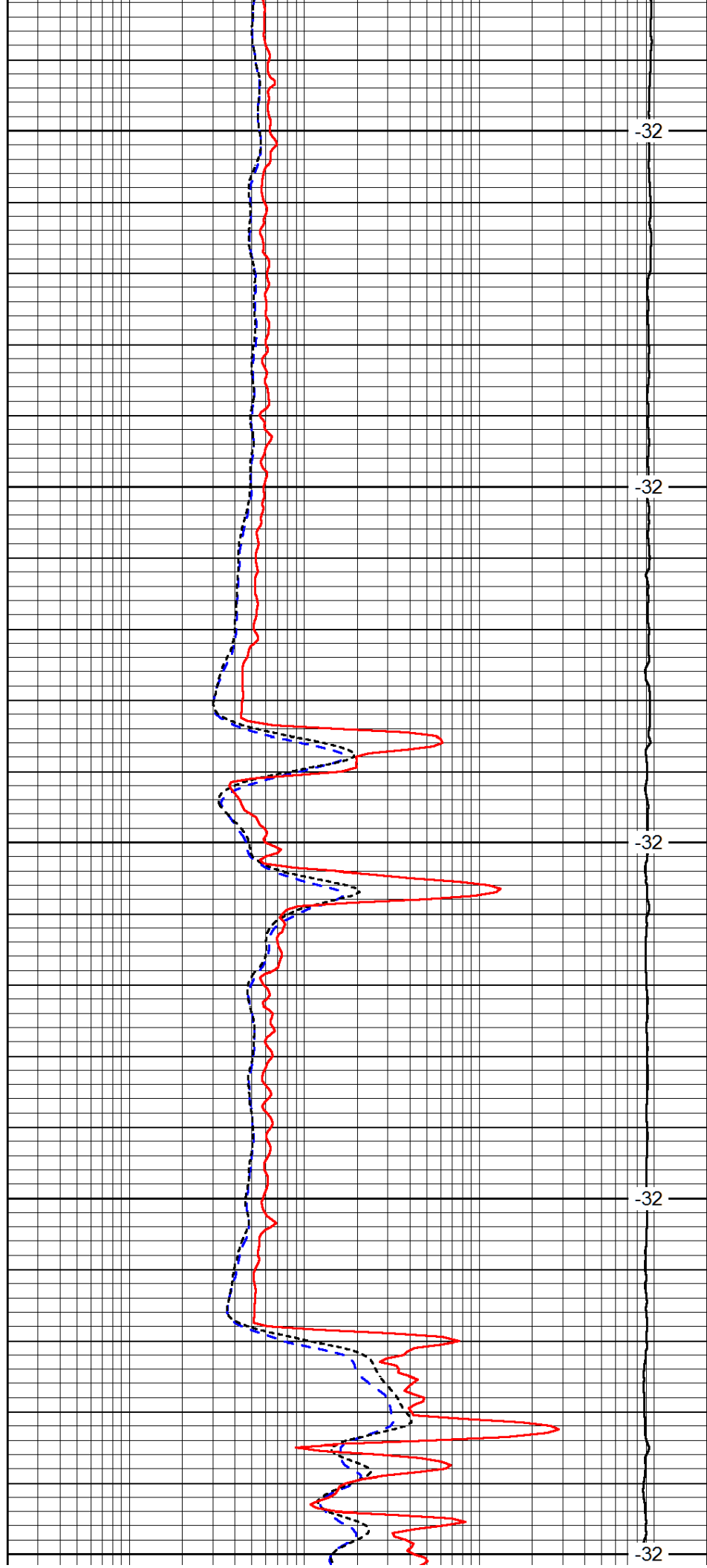
1550

1600

1650

1700

1750



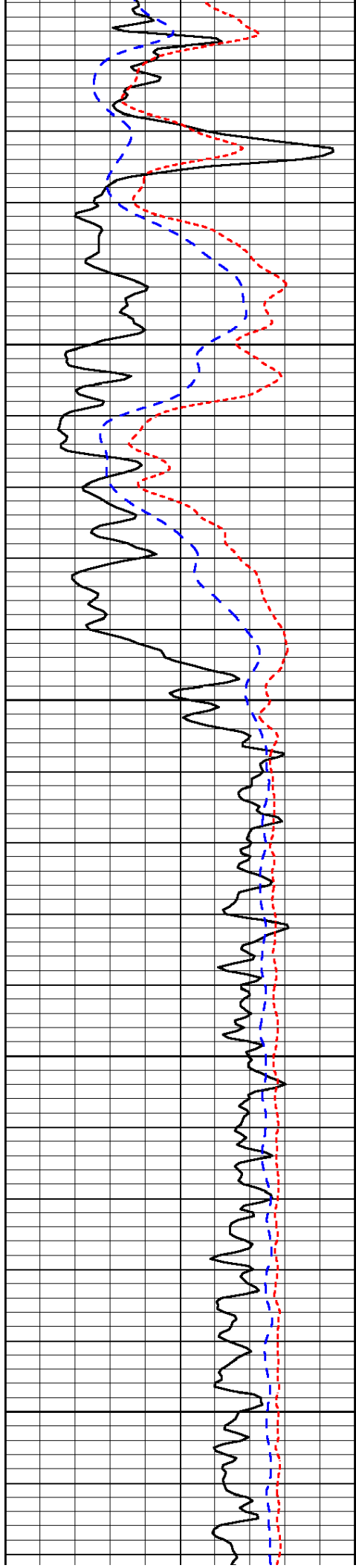
-32

-32

-32

-32

-32



1800

1850

1900

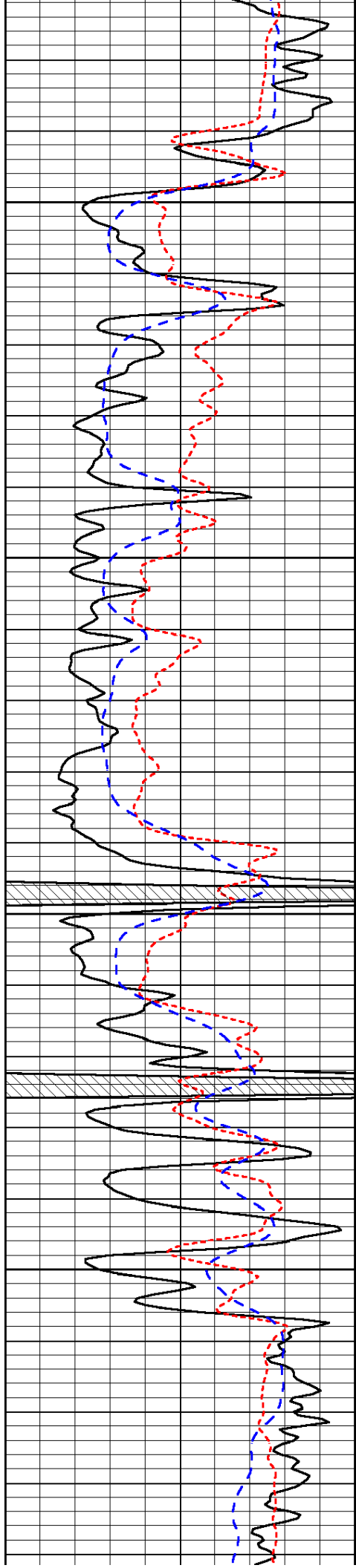
1950

-32

-32

-32

-31

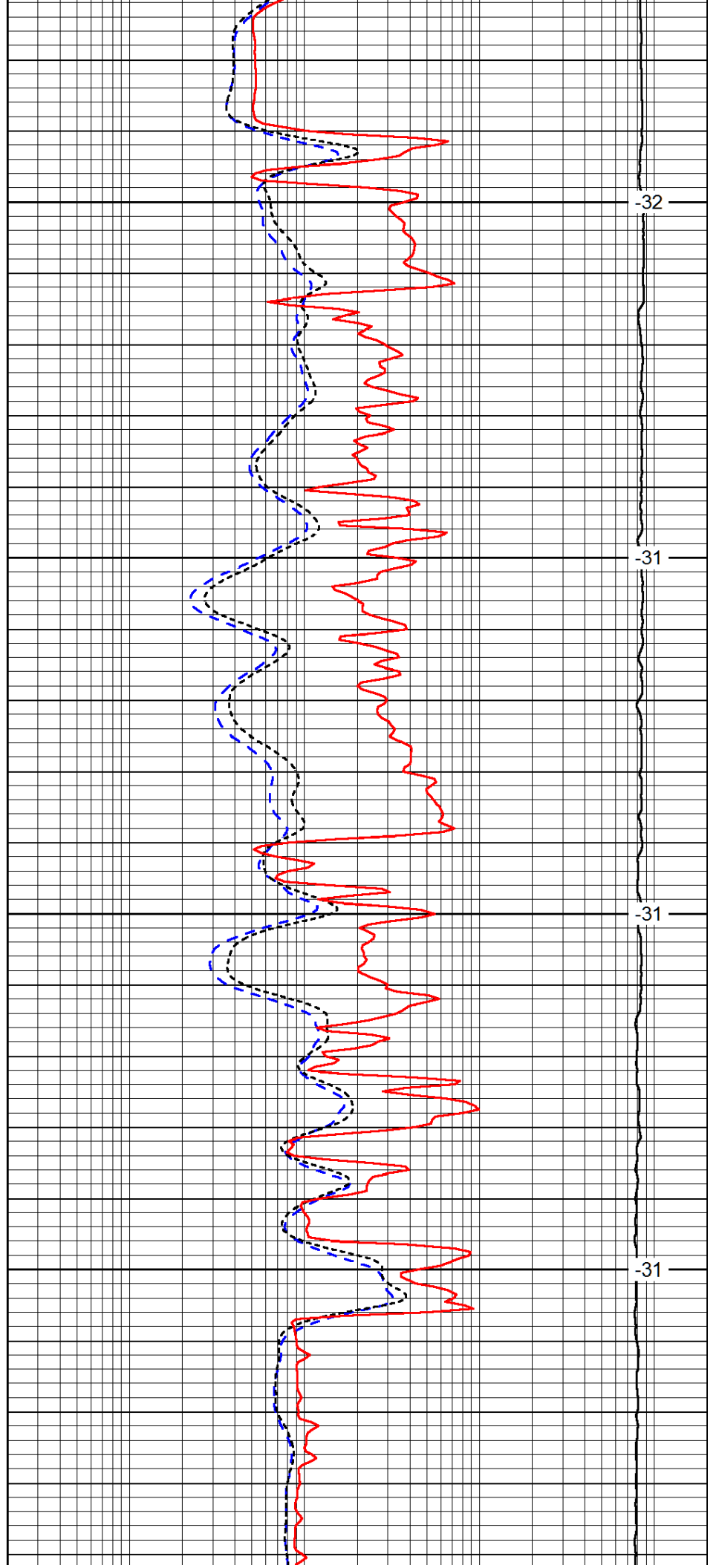


2000

2050

2100

2150

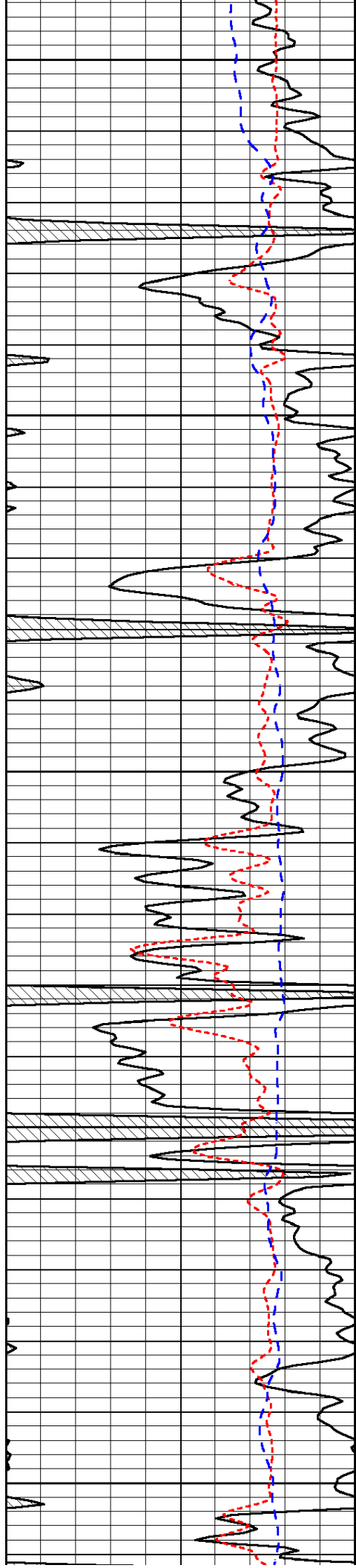


-32

-31

-31

-31



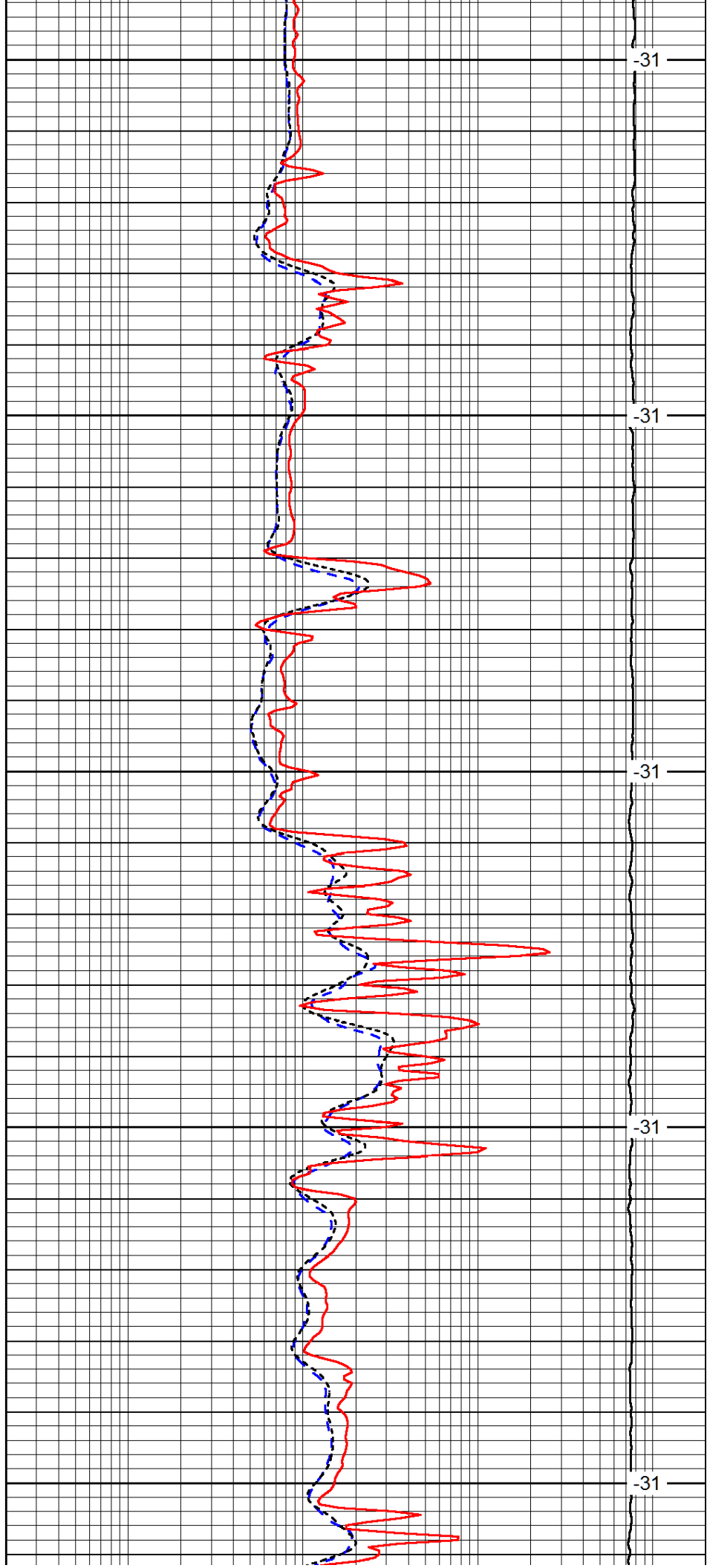
2200

2250

2300

2350

2400



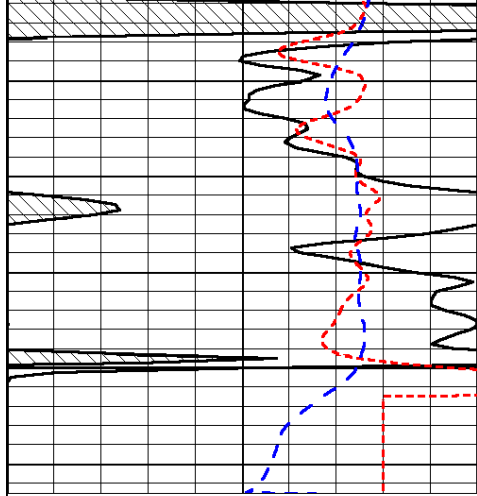
-31

-31

-31

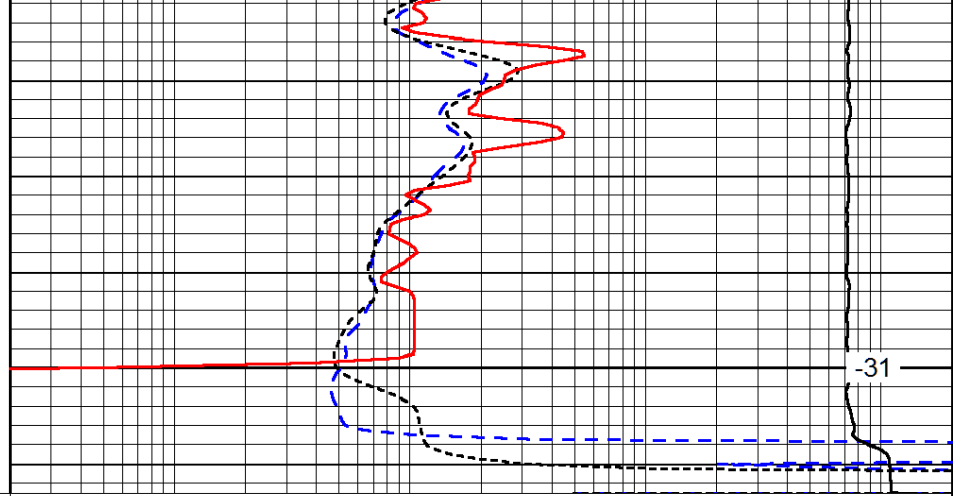
-31

-31



0	Gamma Ray (GAPI)	150
-160	RXO/RT	40
-200	SP (mV)	0

2450



-31

0.2	Deep Resistivity (Ohm-m)	2000
0.2	Medium Resistivity (Ohm-m)	2000
0.2	Shallow Resistivity (Ohm-m)	2000
10000	Line Tension (lb)	0

LSPD
(ft/min)