

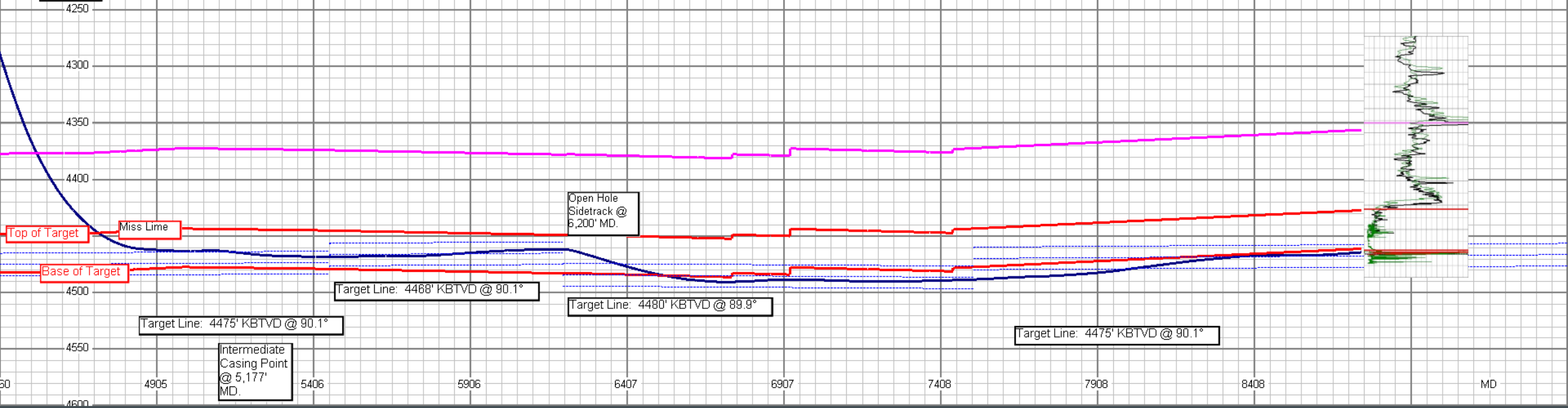
Possible Fracture Fill.

Possible Fracture Fill.

JEFFERSON 3306 1-27H
Sec 27-T33S-R6W
Harper County, Kansas

MD	Inc	Azi	TVD	VS
Lst Swy:	8747	91.2	358.1	4484 4802
Date - Time: 7/7/2013 - 10:07 AM				

Cherokee



Open Hole Sidetrack @ 5,200' MD.

Top of Target

Miss Lime

Base of Target

Target Line: 4468' KBTVD @ 90.1°

Target Line: 4480' KBTVD @ 89.9°

Target Line: 4475' KBTVD @ 90.1°

Target Line: 4475' KBTVD @ 90.1°

Intermediate Casing Point @ 5,177' MD.

