



WIRELINE SERVICES, INC.
CHANUTE, KANSAS

**GAMMA RAY
NEUTRON
COMPLETION LOG**

Company **3-B ENERGY, INC.**
Well **PHILLIPS #37**
Field **NEODESHA**
County **WILSON** State **KANSAS**

Location: **SEC 26 TWP 30S RGE 16E**
148S FSL & 49S FWL
SE SWNW SW

Perment Dam Log Measured From
GL GL
GL GL
Elevation **811EST**
K.B. **811EST**
D.T. **811EST**

Date **9-19-13**
Run Number **1NW**
Depth Driller
Depth Logger **851.4'**

Top Log Interval **11.4'**
Bottom Logged Interval **851.4'**
Fluid Level **FULL**

Type Fluid **WATER**
Production Casing **2 7/8" @ TD @ @**

Max. Recorded Temp.
Estimated Cement Top
Calculated Cement Top
Amount & Type Cement
Amount & Type Admix

Drilling Contractor
Equipment Number
Location
Recorded By
Witnessed By

<<< Fold Here >>>

All interpretations are opinions based on inferences from electrical or other measurements and we cannot and do not guarantee the accuracy or correctness of any interpretation, and we shall not, except in the case of gross or willful negligence on our part, be liable or responsible for any loss, costs, damages, or expenses incurred or sustained by anyone resulting from any interpretation made by any of our officers, agents or employees. These interpretations are also subject to our general terms and conditions set out in our current Price Schedule.

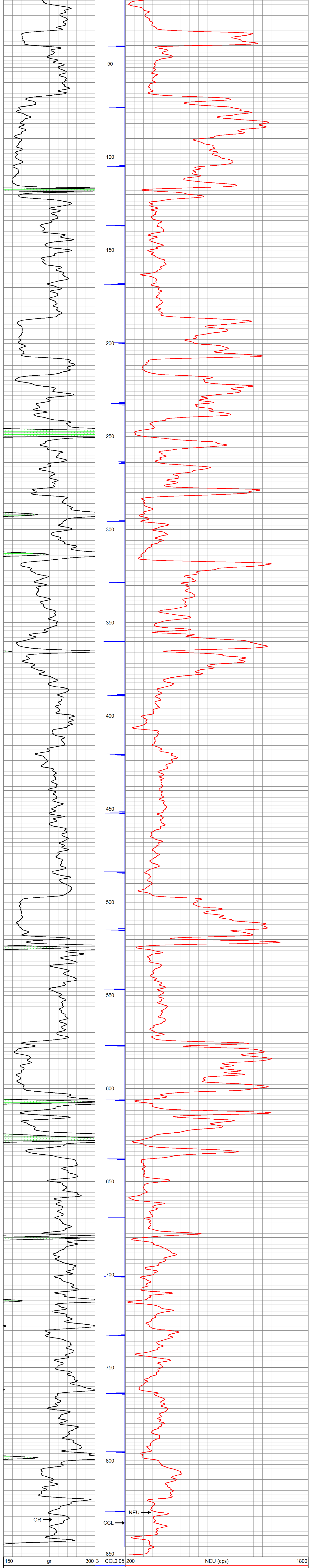
Comments

THANK YOU

Sensor	Offset (ft)	Schematic	Description	Len (ft)	OD (in)	Wt (lb)
GR	7.59		GR-TITAN_169 (TIT169_001) Titan 1 11/16" Gamma Ray	4.75	1.69	20.00
CCL	5.05		CCL-TITAN_169 (TIT169) Titan 1 11/16" Logging CCL	1.83	1.69	7.50
NEU	0.63		NEU-TITAN (TIT801) TITAN 1 11/16" Neutron	4.33	1.69	25.00

Dataset: phillips #37.db; field/well/run1/pass1
Total Length: 10.92 ft
Total Weight: 52.50 lb
O.D.: 1.69 in

Database File: e:\phillips #37.db
Dataset Pathname: pass1
Presentation Format: gr-n-ccl
Dataset Creation: Thu Sep 19 10:35:08 2013 by Log Std Casedhole 09061
Charted by: Depth in Feet scaled 1:240



150 gr 300 3 CCL 0.05 200 NEU (cps) 1800
0 GR 150



Company **3-B ENERGY, INC.**
Well **PHILLIPS #37**
Field **NEODESHA**
County **WILSON** SEC. 26 TWP. 30S RGE. 16E
State **KANSAS** Date **9-19-13**