



MIDWEST SURVEYS
 LOGGING - PERFORATING - CONSULTING SERVICES
 P.O. Box 68, Osawatomie, KS 66064
 913.755.2128

GAMMA RAY / NEUTRON / CCL

File No.:

Company: **RJ Enterprises**

Well: **Weiss No. 6-1**

Field: **Bush City Shoestring**

County: **Anderson** State: **Kansas**

Location: **3223' FSL & 4374' FEL**
NW-SE-SW-NW

Other Services Perforate

Sec. 15 Twp. 21S Rge. 20E

Permitt. Datum: **GL** Elevation: **NA**

Log Measured From: **GL** K.B. NA

Drilling Measured From: **GL** D.F. NA

Date: **02-28-2014** Elevation: **GL, NA**

Run Number: **One**

Depth Driller: **876.0**

Depth Logger: **870.0**

Bottom Logged Interval: **889.0**

Top Log Interval: **20.0**

Fluid Level: **Full**

Type Fluid: **Water**

Density / Viscosity: **NA**

Salinity - PPM Cl: **NA**

Max Recorded Temp: **NA**

Estimated Cement Top: **0.0**

Equipment No.: **102** Location: **Osawatomie**

Recorded By: **Gary Windisch**

Witnessed By: **Jason Kent**

BORE-HOLE RECORD				CASING RECORD			
Run	BIT No.	FROM	TO	SIZE	WGT.	FROM	TO
One	9.875"	20.0	7.00"	7.00"	17.0 #	20.0	20.0
Two	5.825"	20.0	876.0	2.875"	6.5 #	0.0	870.5

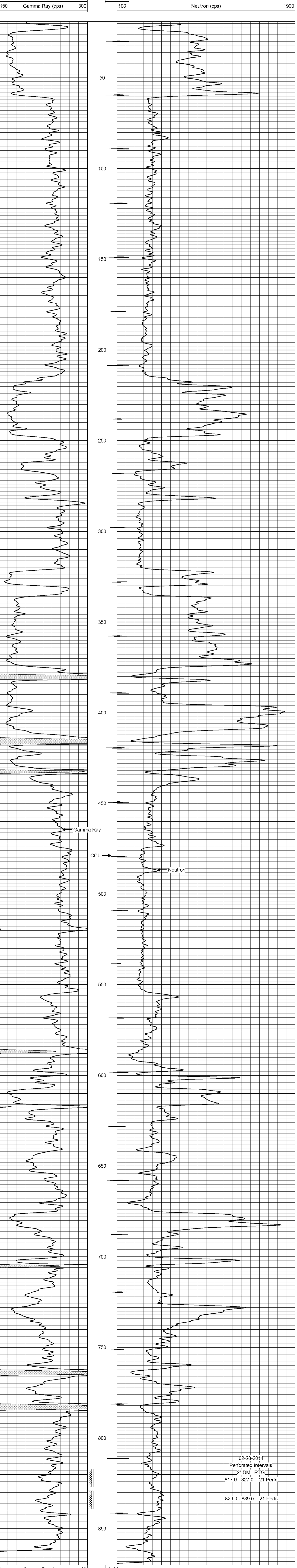
<<< Fold Here >>>

All interpretations are opinions based on inferences from electrical or other measurements and we cannot and do not guarantee the accuracy or correctness of any interpretation, and we shall not, except in the case of gross or willful negligence on our part, be liable or responsible for any loss, costs, damages, or expenses incurred or sustained by anyone resulting from any interpretation made by any of our officers, agents or employees. These interpretations are also subject to our general terms and conditions set out in our current Price Schedule.

Comments

Drilling Contractor :
RJ Enterprises

Database File: **weiss6i.db**
 Dataset Pathname: **pass1**
 Presentation Format: **gr-n-ccl**
 Dataset Creation: **Fri Feb 28 13:13:42 2014 by Log SCH 111116**
 Charted by: **Depth in Feet scaled 1:240**



02-28-2014
 Perforated Intervals
 2" DML RTG
 817.0 - 827.0 21 Perfs
 829.0 - 839.0 21 Perfs

