



# MIDWEST SURVEYS

LOGGING - PERFORATING - CONSULTING SERVICES  
P.O. Box 68, Osawatomie, KS 66064  
913 / 755 - 2128

## GAMMA RAY / NEUTRON / CCL

File No.

API # 15-207-28,563

Company **Hass Petroleum, LLC**

Well **Arnold No. 3-HP**

Field **Winterscheid**

County **Woodson** State **Kansas**

Location **330' FNL & 935' FEL  
E/2-NW-NE-NE** Other Services  
**Perforate**

Sec. **35** Twp. **23s** Rge. **14e** Elevation  
Permanent Datum **GL** Elevation **1130'** K.B. **1137'**  
Log Measured From **GL** D.F. **NA**  
Drilling Measured From **KB 7' from GL** G.L. **1130'**

Date	06-26-2013
Run Number	One
Depth Driller	1736.0
Depth Logger	1718.9
Bottom Logged Interval	1717.9
Top Log Interval	200.0
Fluid Level	Full
Type Fluid	Water
Density / Viscosity	NA
Salinity - PPM Cl	NA
Max Recorded Temp	NA
Estimated Cement Top	0.0
Equipment No.	107
Location	Osawatomie
Recorded By	Steve Windisch
Witnessed By	Mark Haas

BORE-HOLE RECORD				CASING RECORD			
RUN	BIT	FROM	TO	SIZE	WGT.	FROM	TO
One	12.25"	0.0	40.0	8.625"	22.0 #	0.0	40.0
Two	6.75"	40.0	1736.0	4.50"	10.5 #	0.0	1726.0

<<< Fold Here >>>

All interpretations are opinions based on inferences from electrical or other measurements and we cannot and do not guarantee the accuracy or correctness of any interpretation, and we shall not, except in the case of gross or willful negligence on our part, be liable or responsible for any loss, costs, damages, or expenses incurred or sustained by anyone resulting from any interpretation made by any of our officers, agents or employees. These interpretations are also subject to our general terms and conditions set out in our current Price Schedule.

Comments

Drilling Contractor :  
**Skyy Drilling, LLC**  
Rig # 3

Database File: arnold3hp.db  
Dataset Pathname: pass1  
Presentation Format: gr-n-ccl  
Dataset Creation: Wed Jun 26 14:50:13 2013 by Log SCH 111116  
Charted by: Depth in Feet scaled 1:240

-1 CCL 1  
10

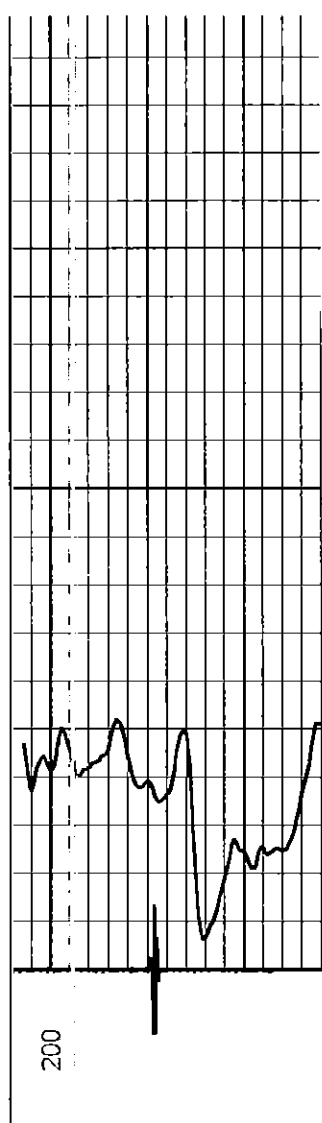
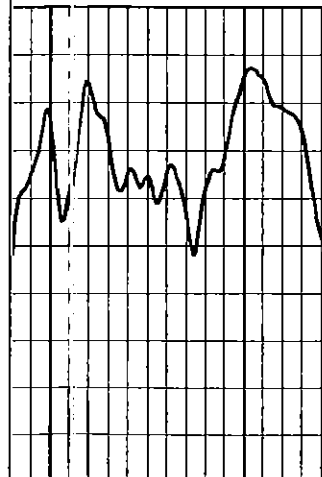
150  
300

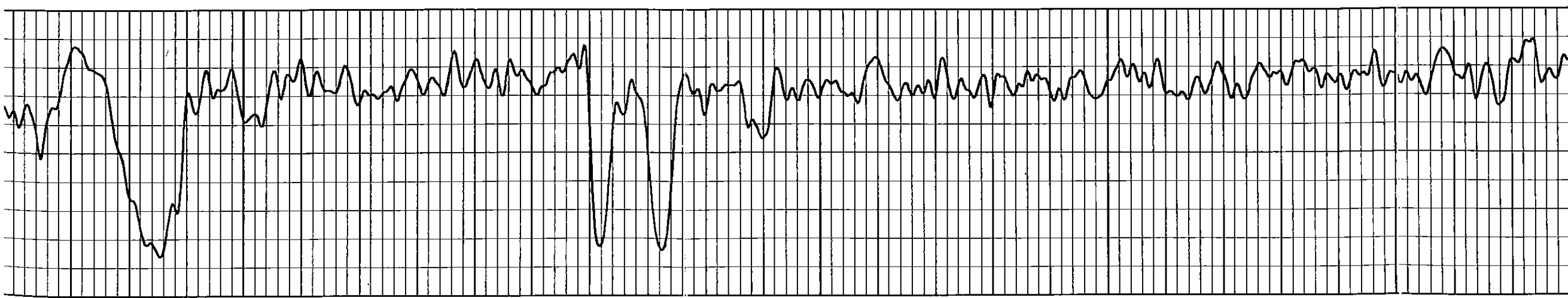
Gamma Ray (cps)

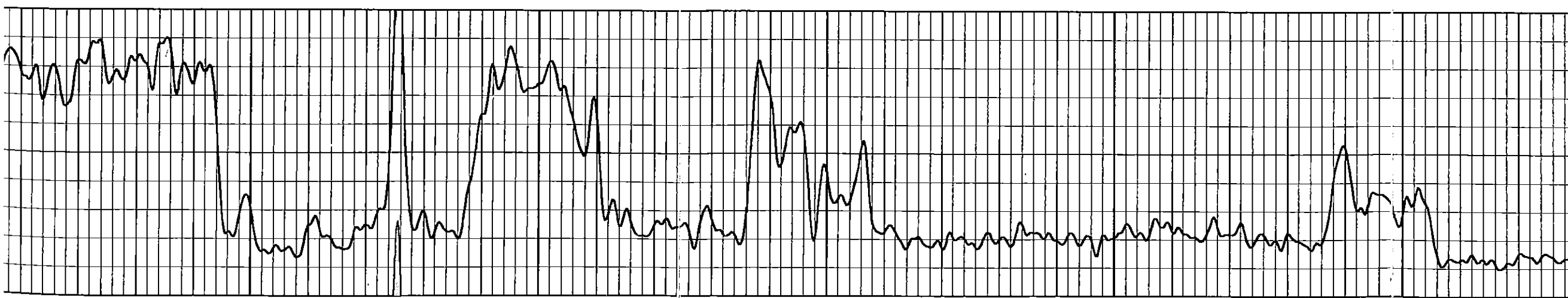
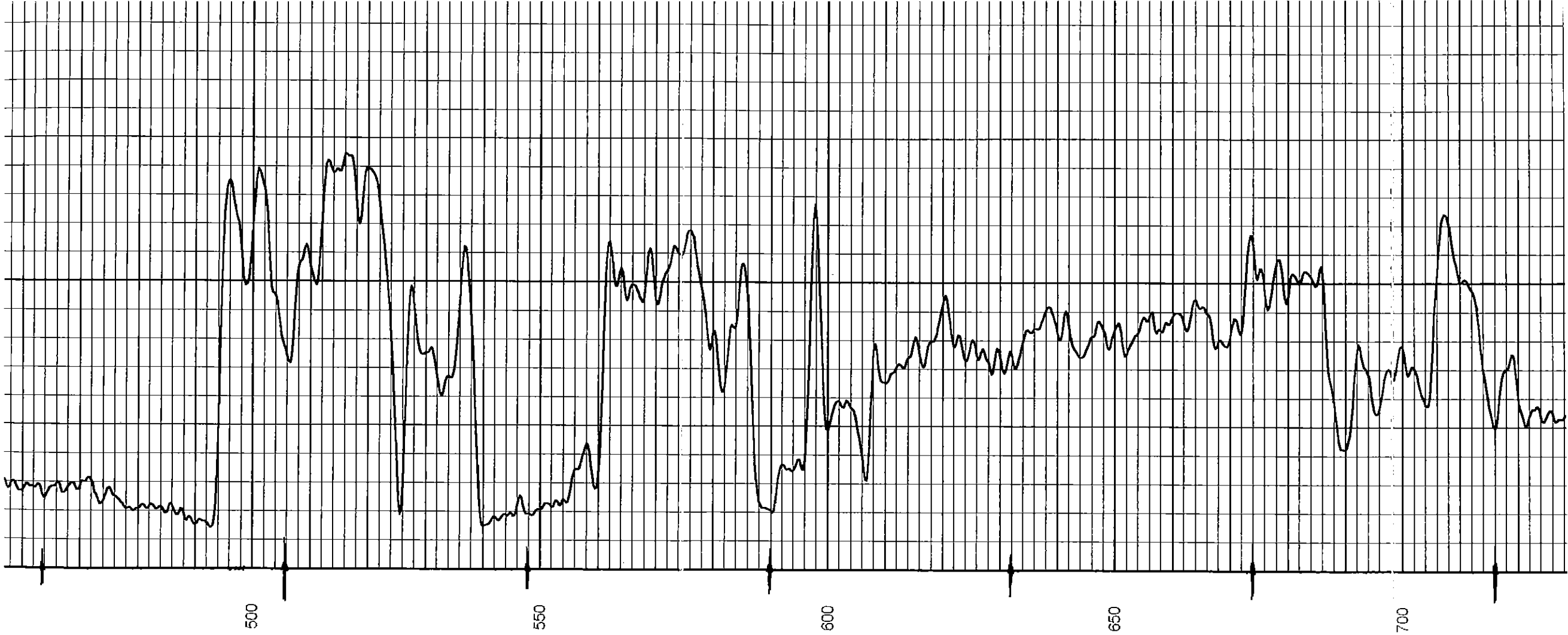
Gamma Ray (cps)

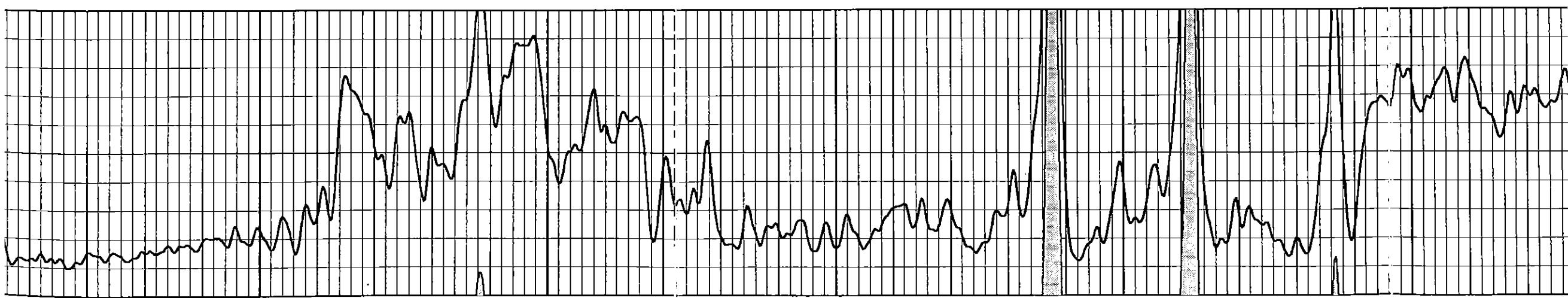
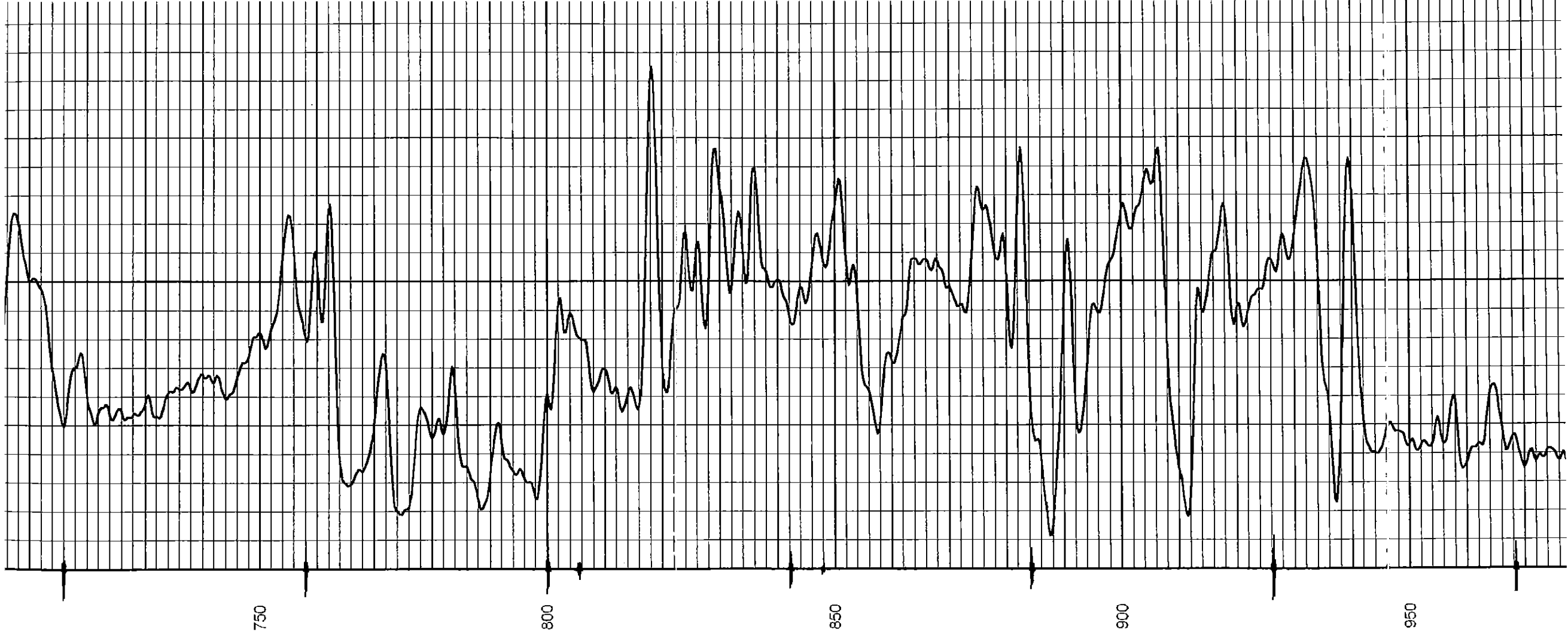
Neutron (cps)

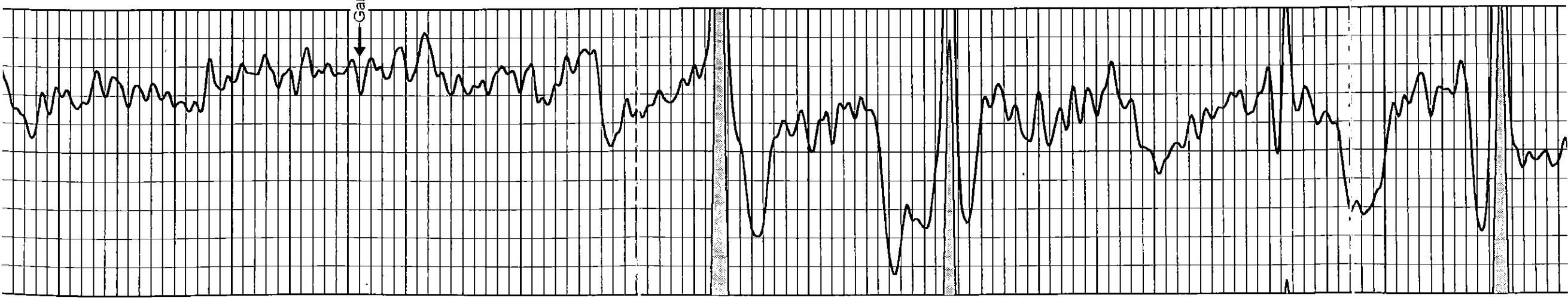
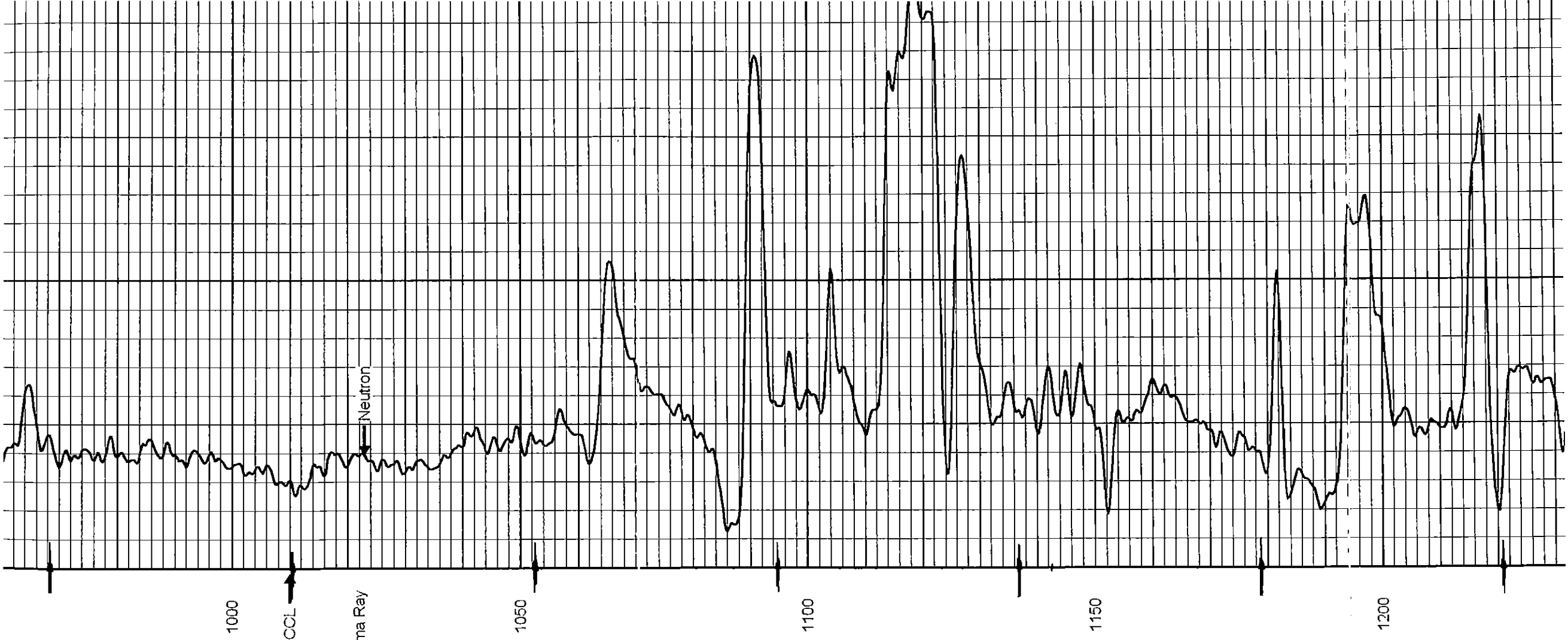
2100

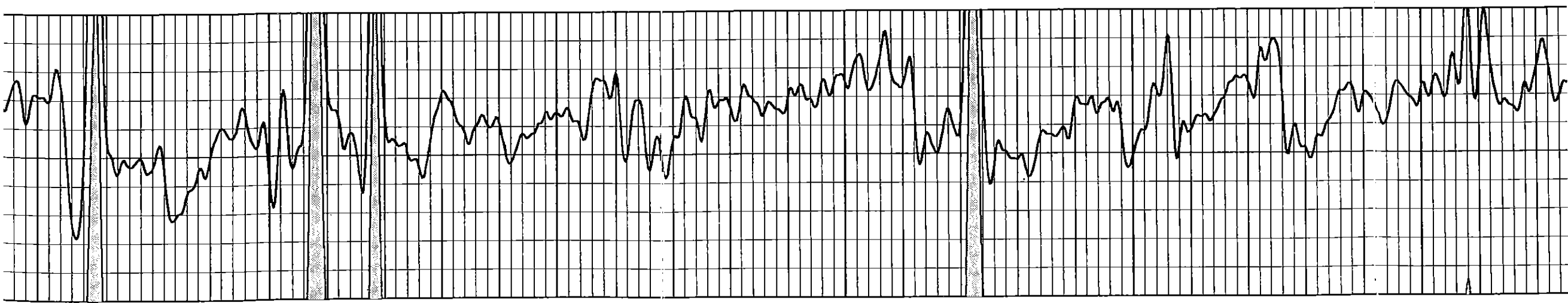
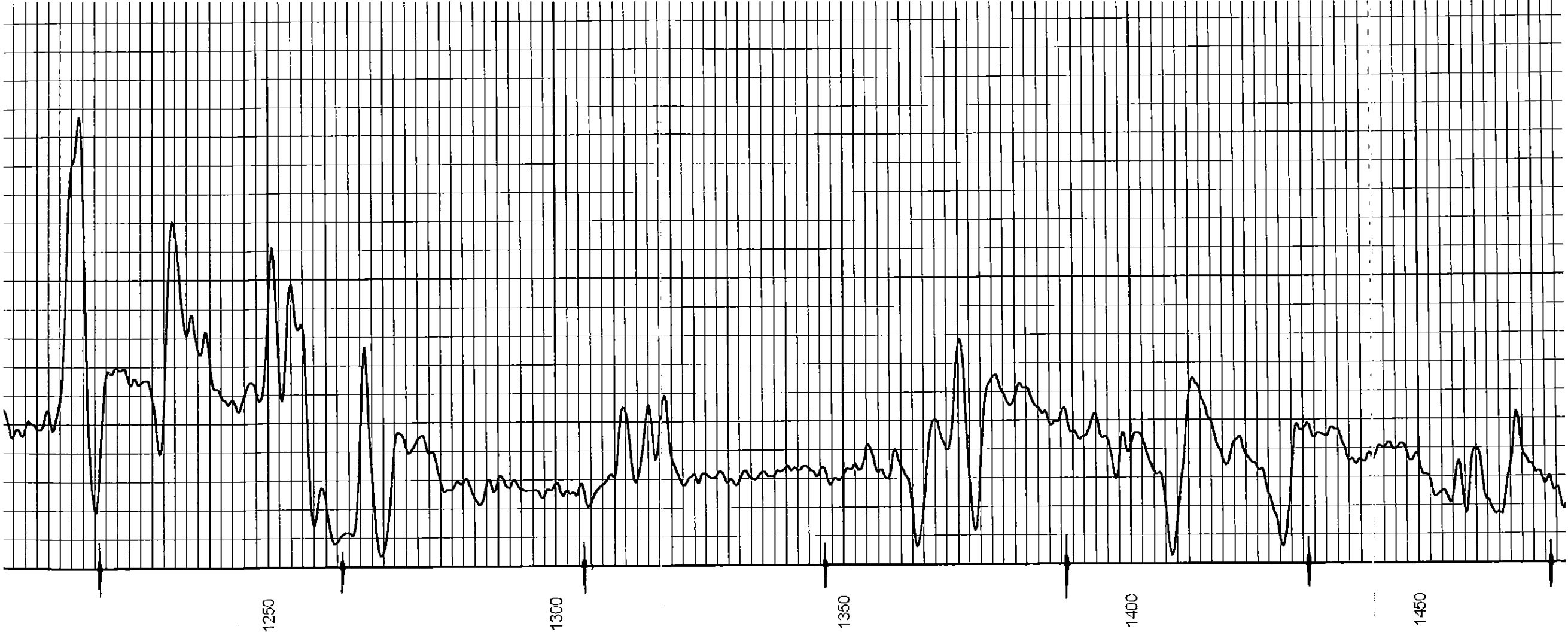


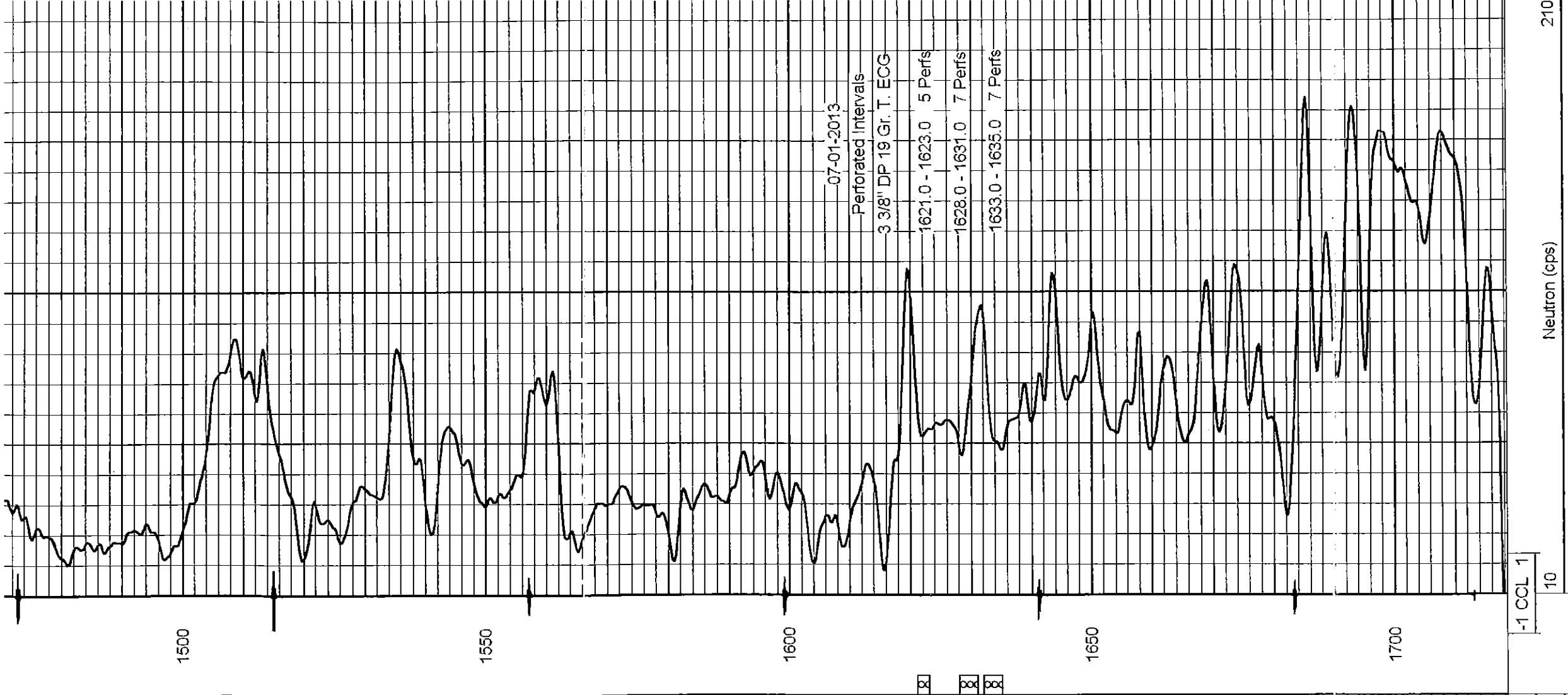
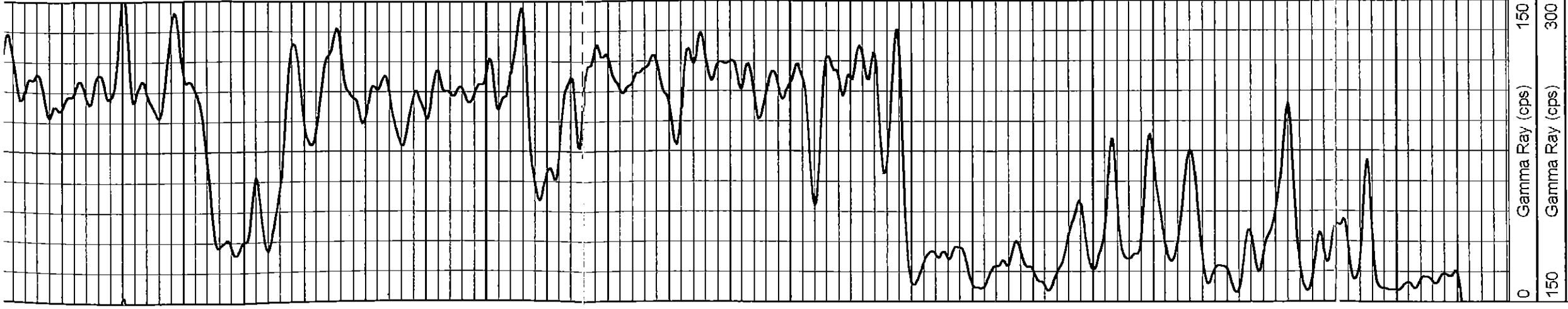












07-01-2013

Perforated Intervals  
3 3/8" DP 19 Gr. T. ECG  
1621.0 - 1623.0    5 Perfs  
1628.0 - 1631.0    7 Perfs  
1633.0 - 1635.0    7 Perfs

□ □ □