



**MIDWEST SURVEYS**  
 LOGGING - PERFORATING - CONSULTING SERVICES  
 P.O. Box 68, Osawatomie, KS 66064  
 913 / 755 - 2128

**GAMMA RAY / NEUTRON / CCL**

File No.

API # 15-207-28,475

Company **Hass Petroleum, LLC**

Well **Arnold No. 7-HP**

Field **Winterscheid**

County **Woodson** State **Kansas**

Location **990' FNL & 935' FEL  
E/2-SW-NE-NE** Other Services  
**Perforate**

Sec. **35** Twp. **23s** Rge. **14e** Elevation  
 Permanent Datum **GL** Elevation **1132'** K.B. **1139'**  
 Log Measured From **GL** D.F. **NA**  
 Drilling Measured From **KB 7' from GL** G.L. **1132'**

Date	07-31-2013
Run Number	One
Depth Driller	2008.0
Depth Logger	2008.0
Bottom Logged Interval	2007.0
Top Log Interval	1050.0
Fluid Level	300.0
Type Fluid	Oil & Water
Density / Viscosity	NA
Salinity - PPM Cl	NA
Max Recorded Temp	NA
Estimated Cement Top	0.0
Equipment No.	107
Location	Osawatomie
Recorded By	Steve Windisch
Witnessed By	Mark Haas

RUN	BORE-HOLE RECORD				CASING RECORD			
	No.	BIT	FROM	TO	SIZE	WGT.	FROM	TO
One	12.25"	0.0	40.0	8.625"	22.0 #	0.0	40.0	
Two	6.75"	40.0	2008.0	4.50"	10.5 #	0.0	2006.0	

<<< Fold Here >>>

All interpretations are opinions based on inferences from electrical or other measurements and we cannot and do not guarantee the accuracy or correctness of any interpretation, and we shall not, except in the case of gross or willful negligence on our part, be liable or responsible for any loss, costs, damages, or expenses incurred or sustained by anyone resulting from any interpretation made by any of our officers, agents or employees. These interpretations are also subject to our general terms and conditions set out in our current Price Schedule.

Comments

Drilling Contractor :  
 Skyy Drilling, LLC  
 Rig # 3

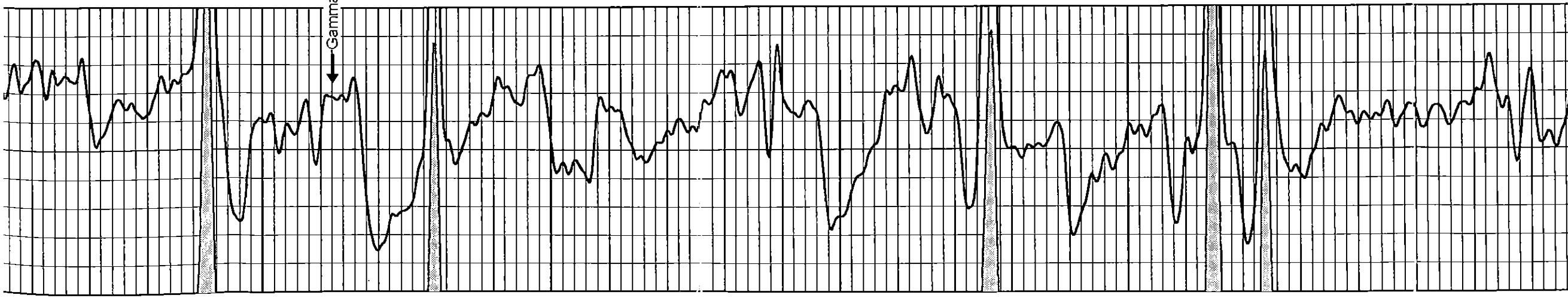
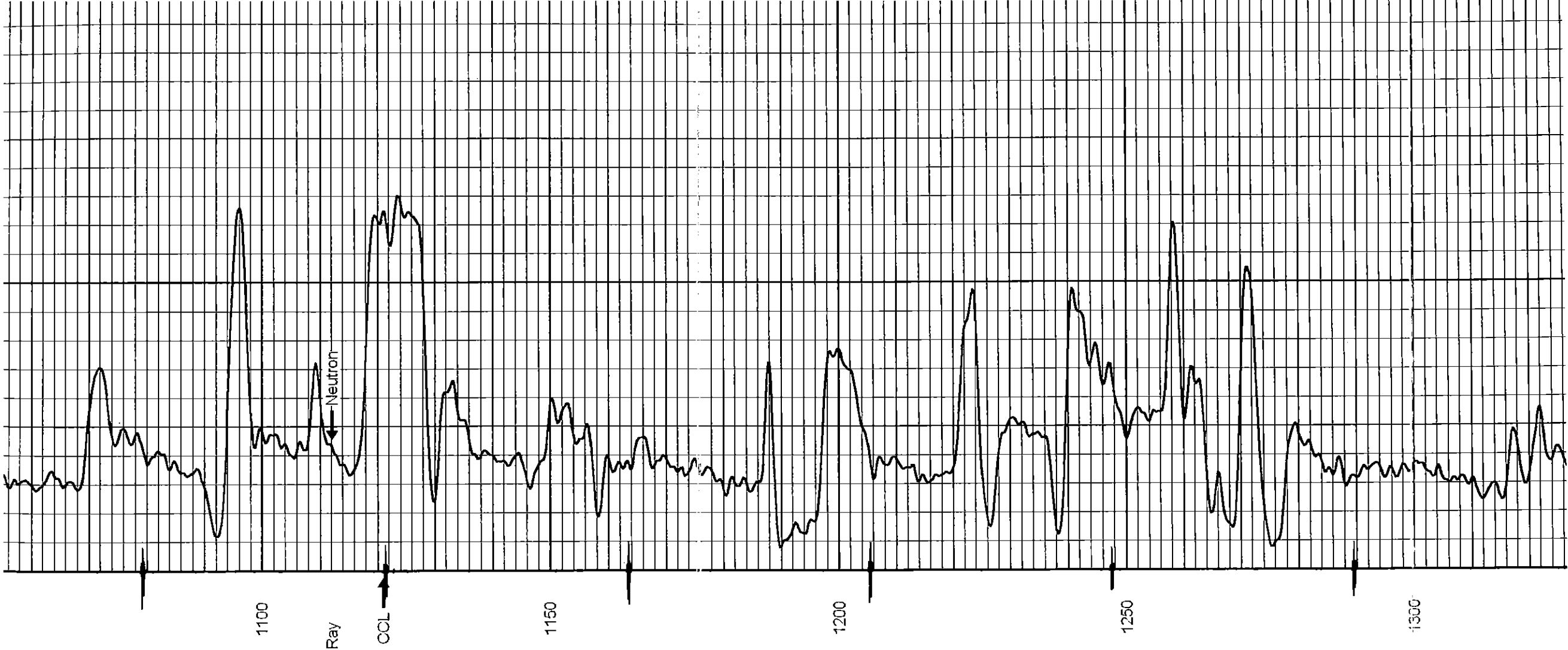
Database File: arnold7hp.db  
 Dataset Pathname: pass1  
 Presentation Format: gr-n-cc  
 Dataset Creation: Wed Jul 31 13:56:43 2013 by Log SCH 111116  
 Charted by: Depth in Feet scaled 1:240

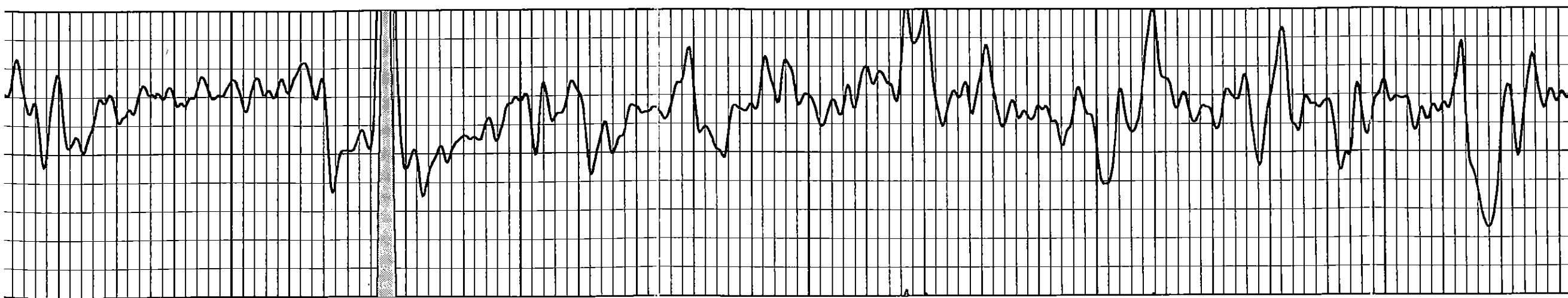
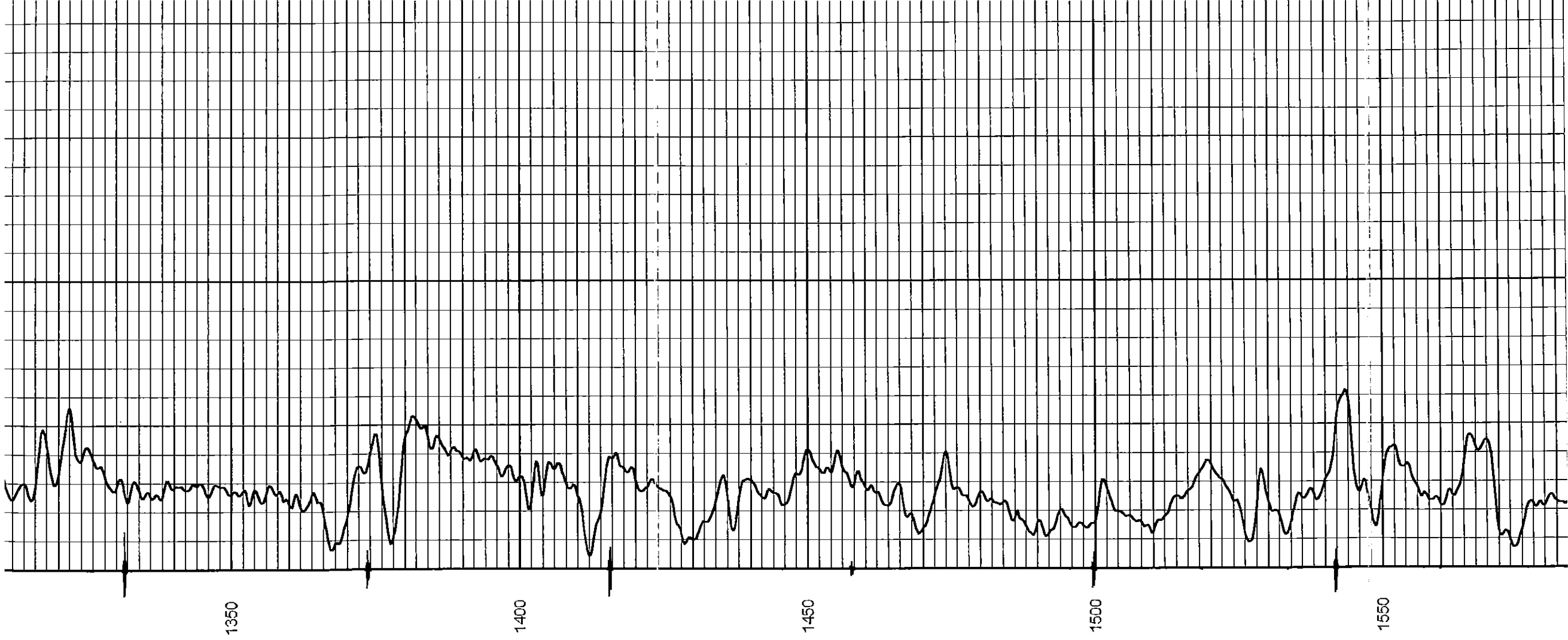
0	Gamma Ray (cps)	150
150	Gamma Ray (cps)	300
-1	CCL	1
		10

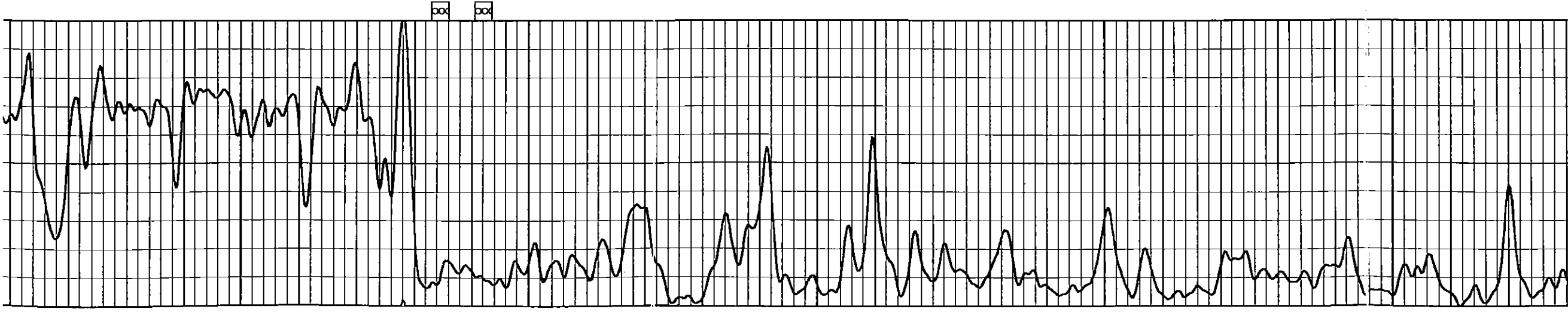
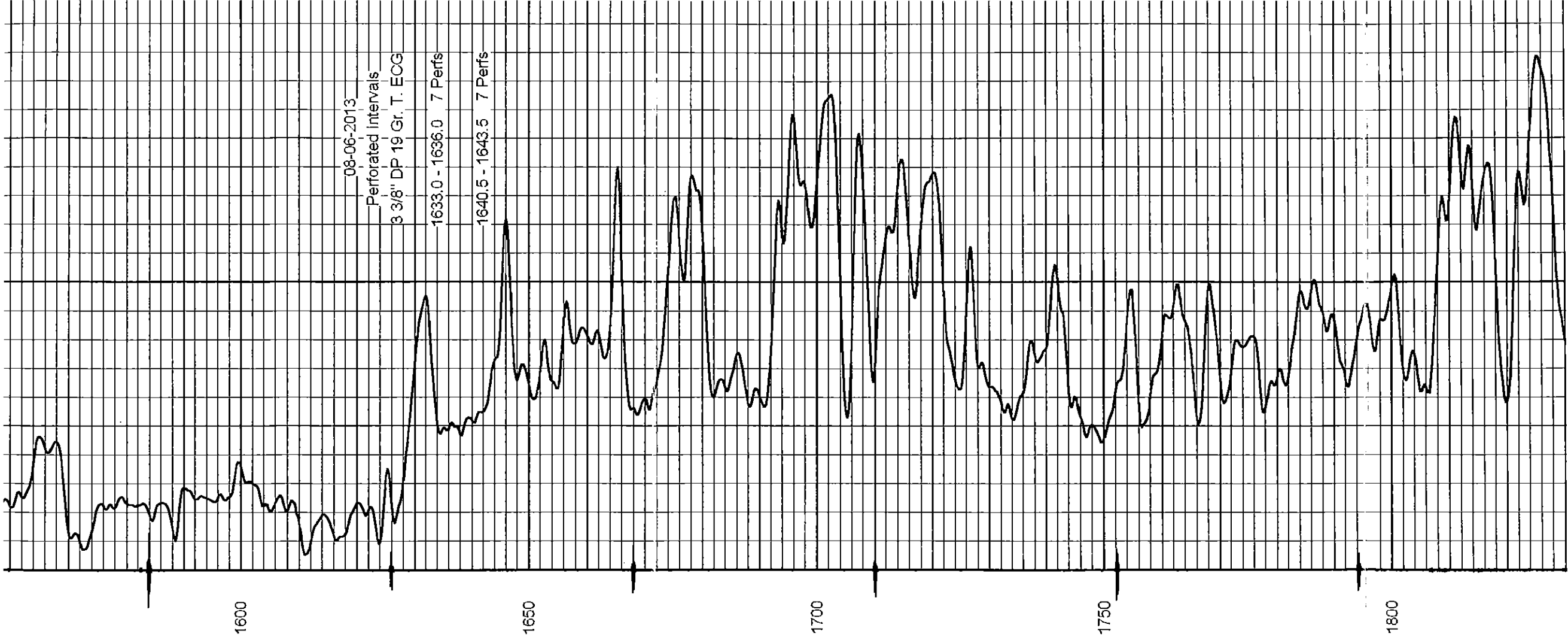
Neutron (cps)

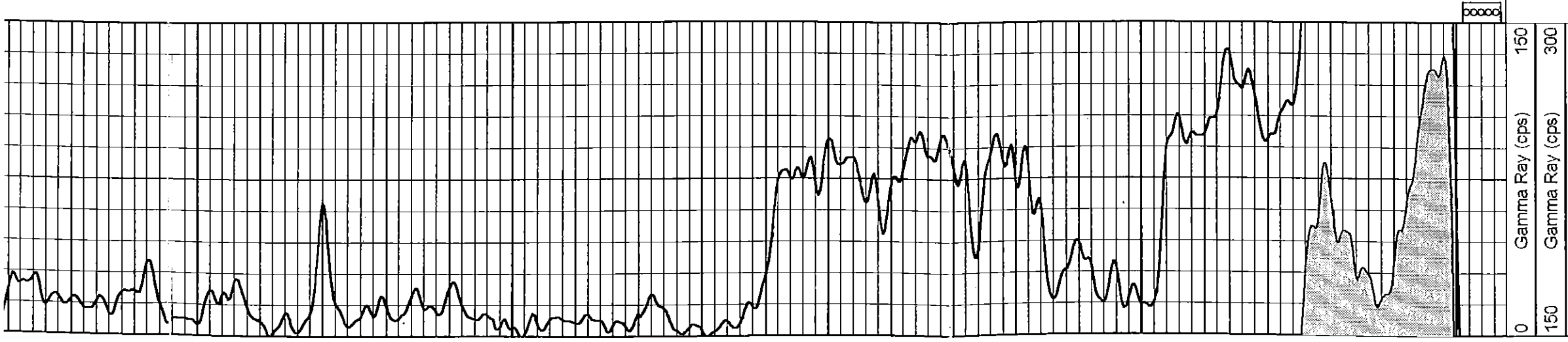
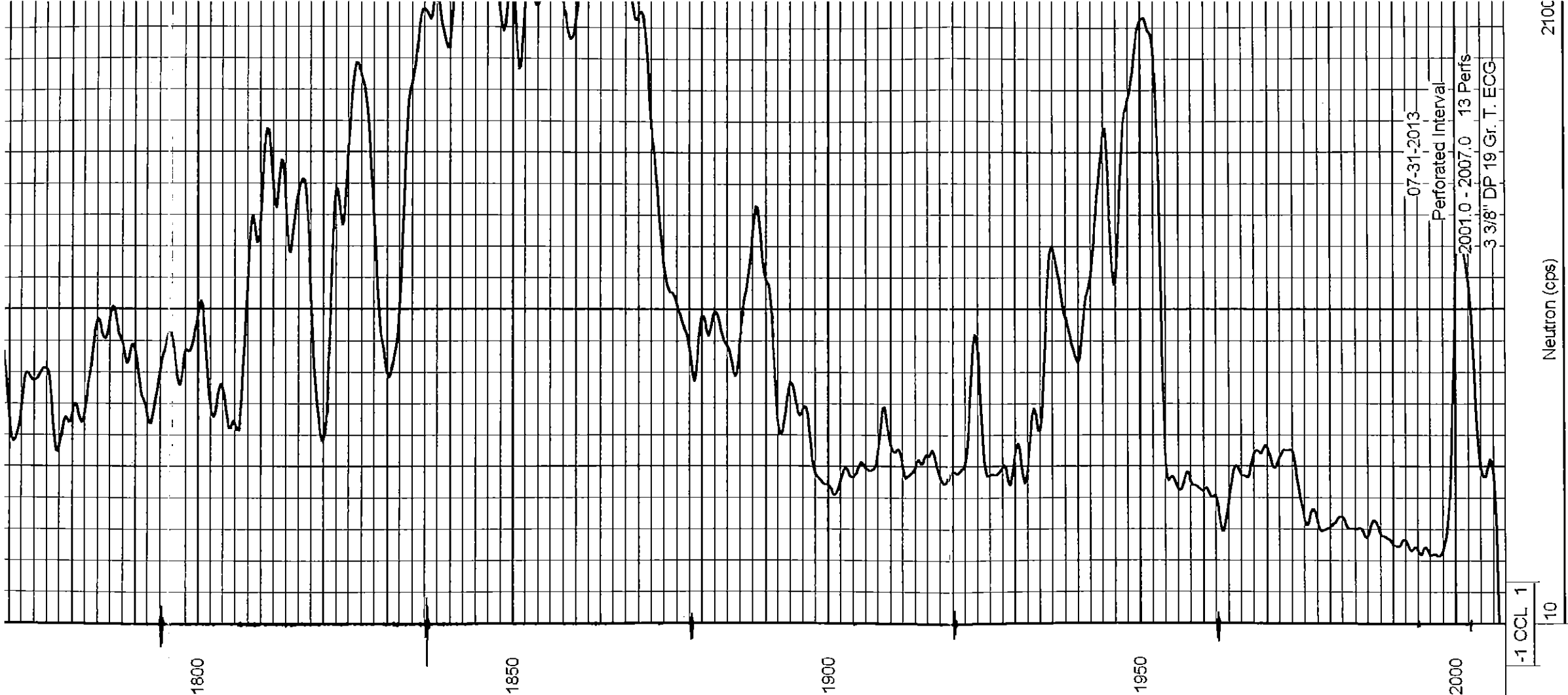
2100











-1 CCL 1  
10

00000