



**MIDWEST SURVEYS**  
 LOGGING - PERFORATING - CONSULTING SERVICES  
 P. O. Box 68, Osawatomie, KS 66064  
 913 / 755 - 2128

**GAMMA RAY / NEUTRON / CCL**

File No. Company Kenneth & Regina Laymon, LLC  
 Well Sturdivan No. 11-14  
 Field Vernon  
 County Woodson State Kansas

Location 1155' FSL & 5115' FEL  
 NW-NW-SW-SW

Sec. 10 Type 2AS Rge. 16e  
 Permanent Datum GL Elevation NA  
 Log Measured From GL  
 Drilling Measured From GL

Date 02-25-2014  
 Run Number One  
 Depth Driller 1110.0  
 Depth Logger 1097.7  
 Bottom Logged Interval 200.0  
 Top Log Interval Full  
 Fluid Level

Type Fluid Water  
 Density / Viscosity NA  
 Salinity - PPH CI NA  
 Max. Recorded Temp NA  
 Estimated Cement Top 0.0  
 Equipment No. Location 107 Osawatomie  
 Recorded By Steve Windisch  
 Witnessed By Mike Laymon

BORE-HOLE RECORD				CASING RECORD				
RUN	NO.	BIT	FROM	TO	SIZE	WGT.	FROM	TO
One	12.25"	0.0	40.0	8.635"	22.0 #	0.0	40.0	40.0
Two	6.00"	40.0	1110.0	2.785"	10.5 #	0.0	1102.0	1102.0

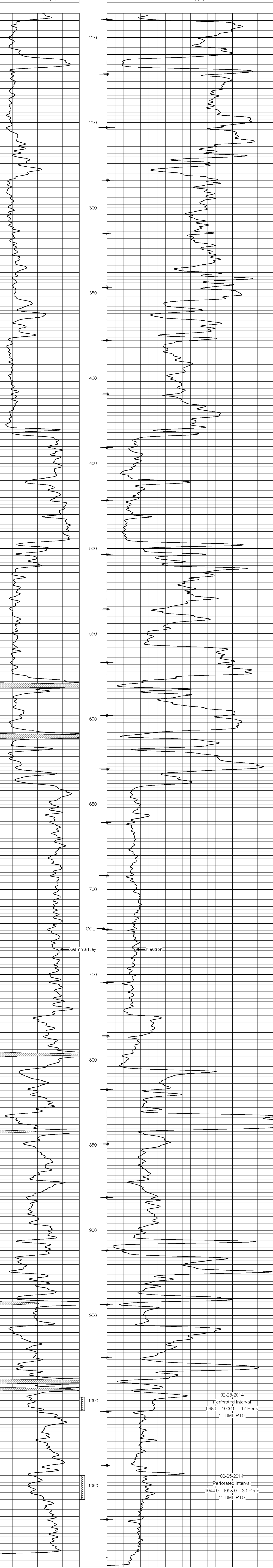
<<< Fold Here >>>

All interpretations are opinions based on inferences from electrical or other measurements and we cannot and do not guarantee the accuracy or correctness of any interpretation, and we shall not, except in the case of gross or willful negligence on our part, be liable or responsible for any loss, costs, damages, or expenses incurred or sustained by anyone resulting from any interpretation made by any of our officers, agents or employees. These interpretations are also subject to our general terms and conditions set out in our current Price Schedule.

Comments

Drilling Contractor :  
 Laymon Oil II, LLC

Database File: sturdivan11-14.db  
 Dataset Pathname: pass1  
 Presentation Format: gr-n-ccl  
 Dataset Created: Tue Feb 25 12:10:34 2014 by Log SCH 111116  
 Charted by: Depth in Feet scaled 1:240



0 Gamma Ray (cps) 150 Gamma Ray (cps) 300  
 -1 CCL 1 Neutron (cps) 2100