



Pioneer Energy Services

Borehole Compensated Sonic Log

API No.	15-039-21,174-00-00		
Company	Murfin Drilling Company, Inc.		
Well	DCFY Unit No. 1 - 11		
Field	Wildcat		
County	Decatur		
State	Kansas		
Location	2450' FNL & 2150' FEL		
Sec: 11	Tw: 2 S	Rge: 29 W	Other Services CNL/CDL MEL/DIL
Permanent Datum	Ground Level	Elevation 2714	Elevation
Log Measured From	Kelly Bushing	5 Ft. Above Perm. Datum	K.B. 2719
Drilling Measured From	Kelly Bushing		D.F. G.L. 2714

Date	5/13/2013		
Run Number	Two		
Type Log	BHC Sonic		
Depth Driller	4025		
Depth Logger	4022		
Bottom Logged Interval	4011		
Top Logged Interval	200		
Type Fluid In Hole	Chemical		
Salinity, PPM CL	1800		
Density	9.2		
Level	Full		
Max. Rec. Temp. F	116		
Operating Rig Time	5 Hours		
Equipment -- Location	108 Hays		
Recorded By	D. Martin		
Witnessed By	Tom Funk		

Borehole Record				Casing Record			
Run No.	Bit	From	To	Size	Wgt.	From	To
One	12.25	00	218	8.625	23#	00	218
Two	7.875	218	TD				

<<< Fold Here >>>

All interpretations are opinions based on inferences from electrical or other measurements and we cannot and do not guarantee the accuracy or correctness of any interpretation, and we shall not, except in the case of gross or willful negligence on our part, be liable or responsible for any loss, costs, damages, or expenses incurred or sustained by anyone resulting from any interpretation made by any of our officers, agents or employees. These interpretations are also subject to our general terms and conditions set out in our current Price Schedule.

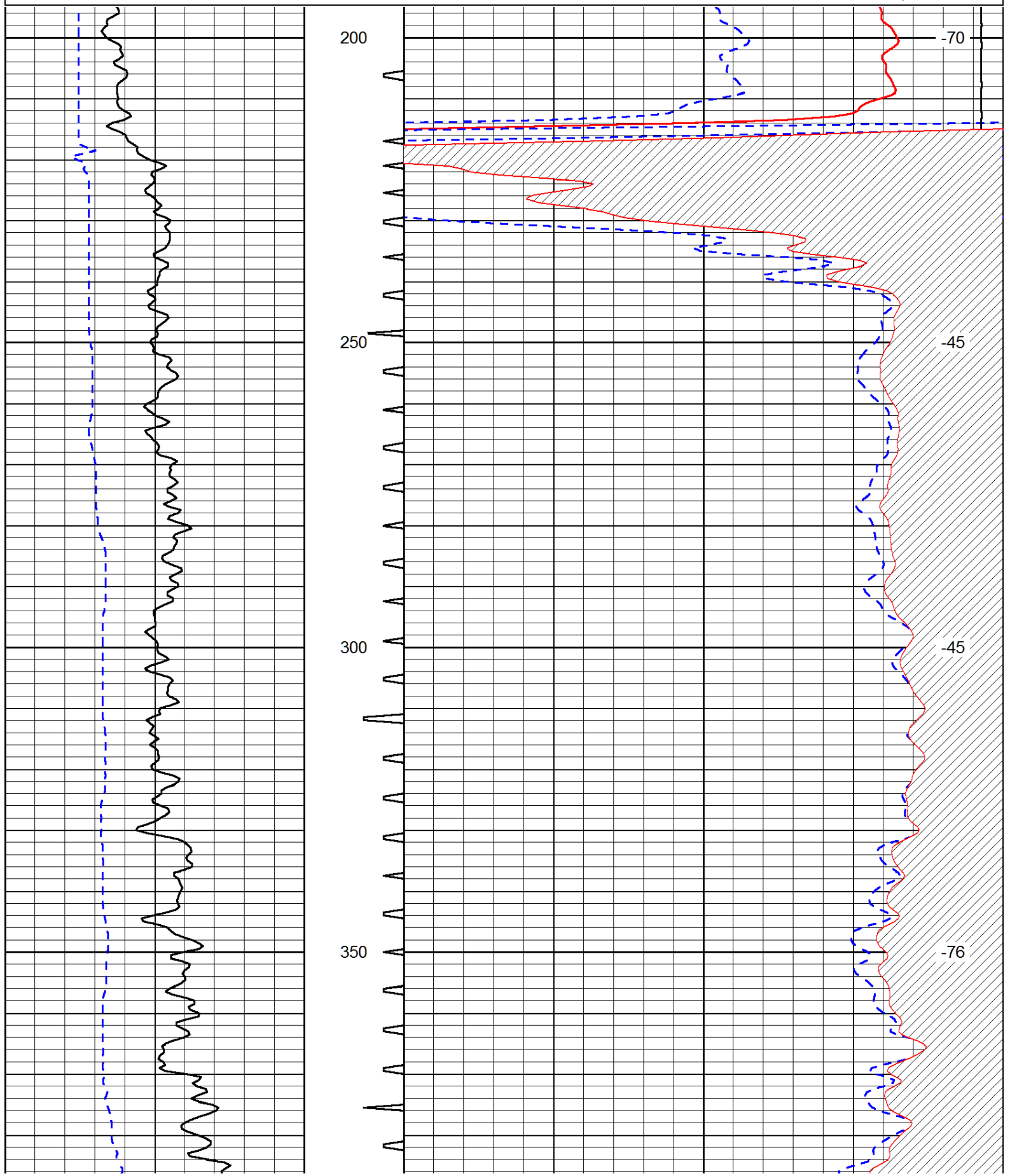
Comments

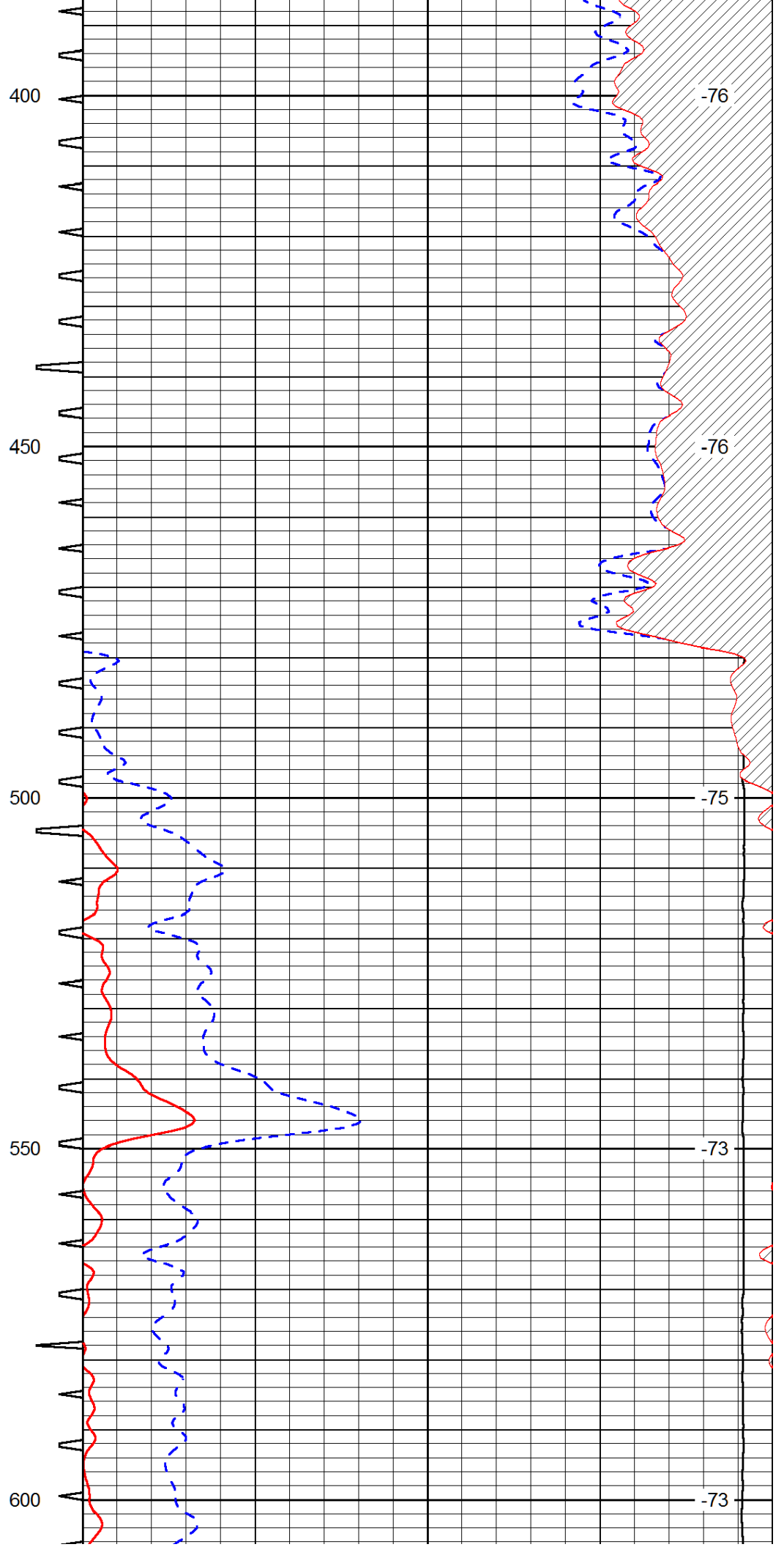
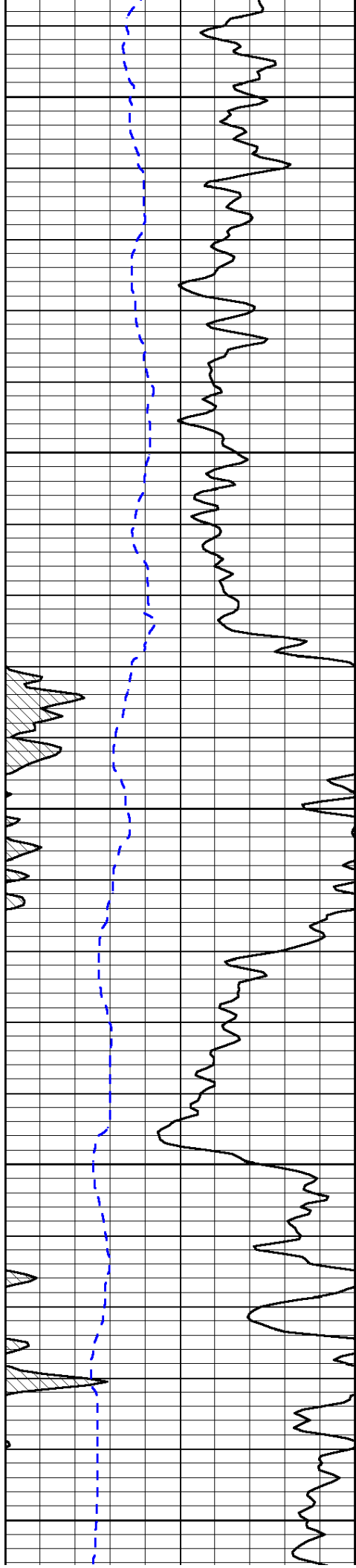
Thank you for using Log-Tech, Inc.
(785) 625-3858

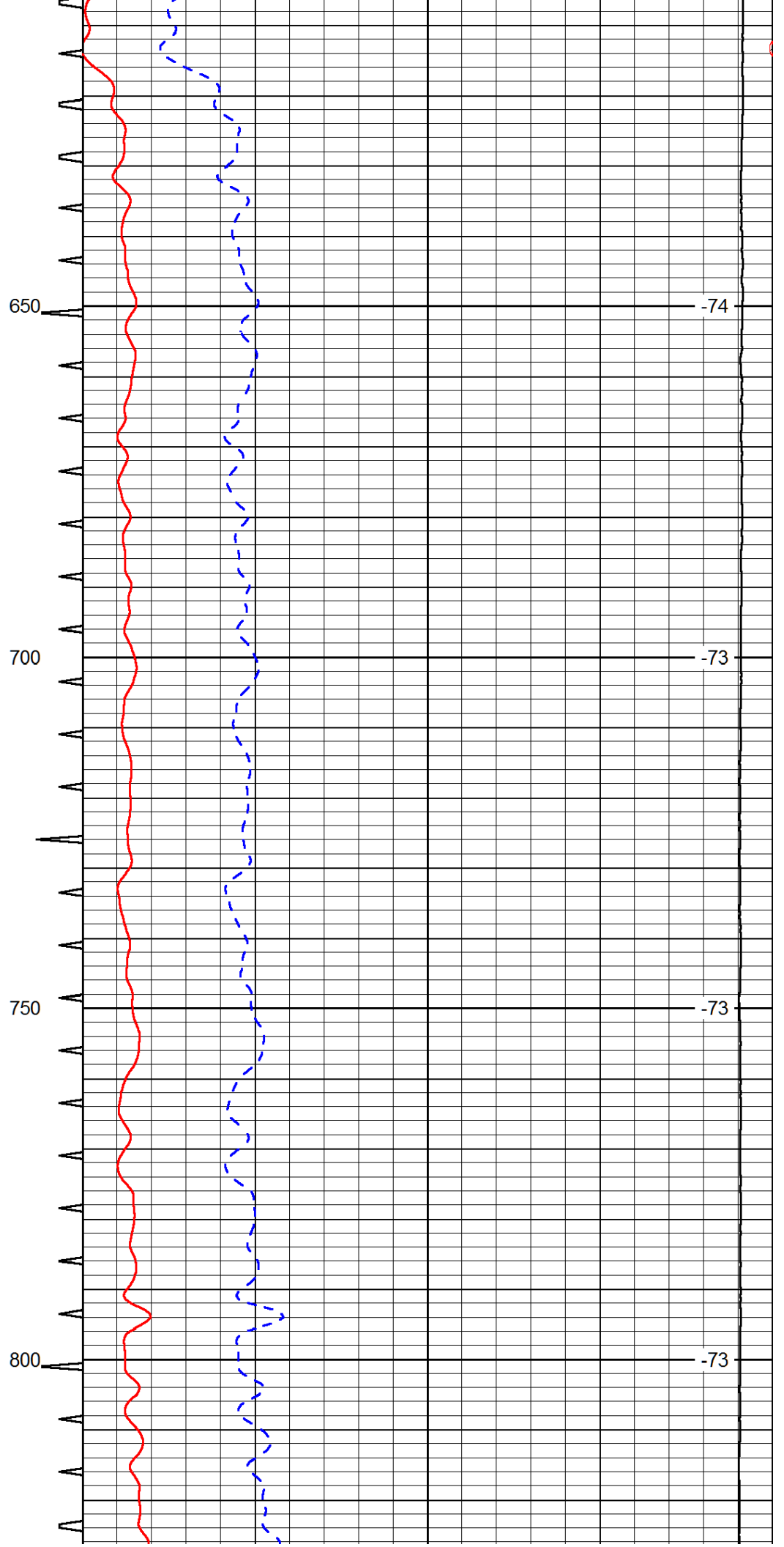
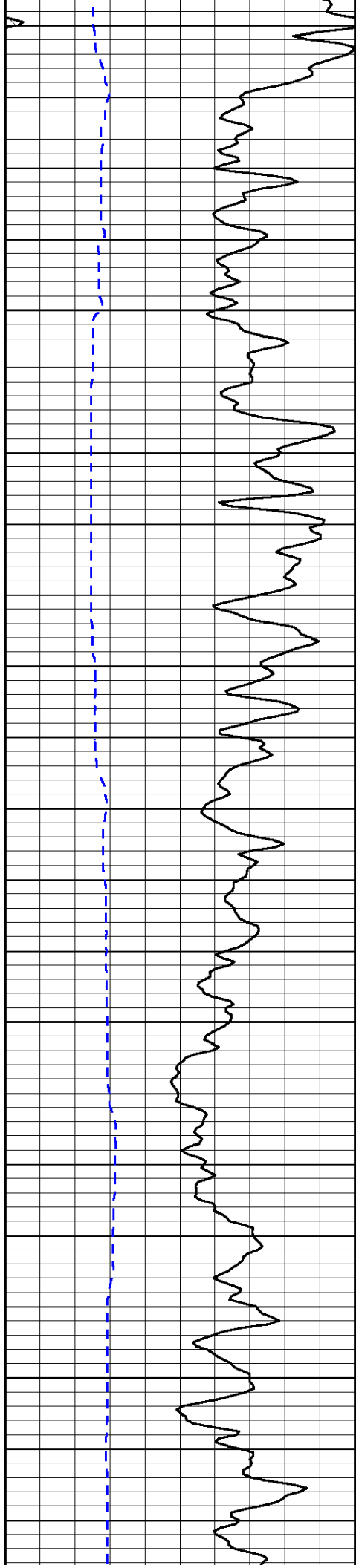
Oberlin, KS
4 N to 4N Rd., 1/2 W, N Into

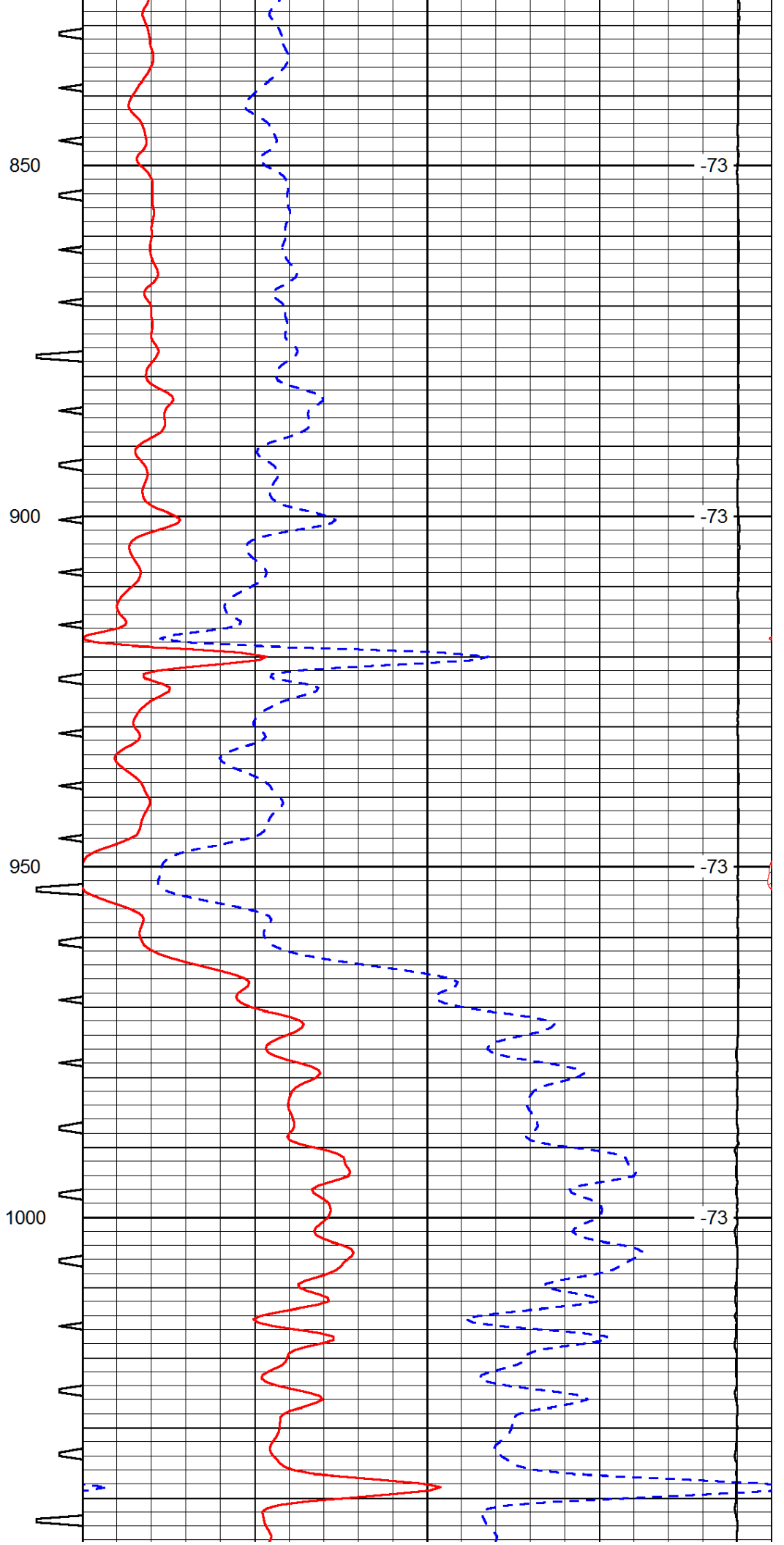
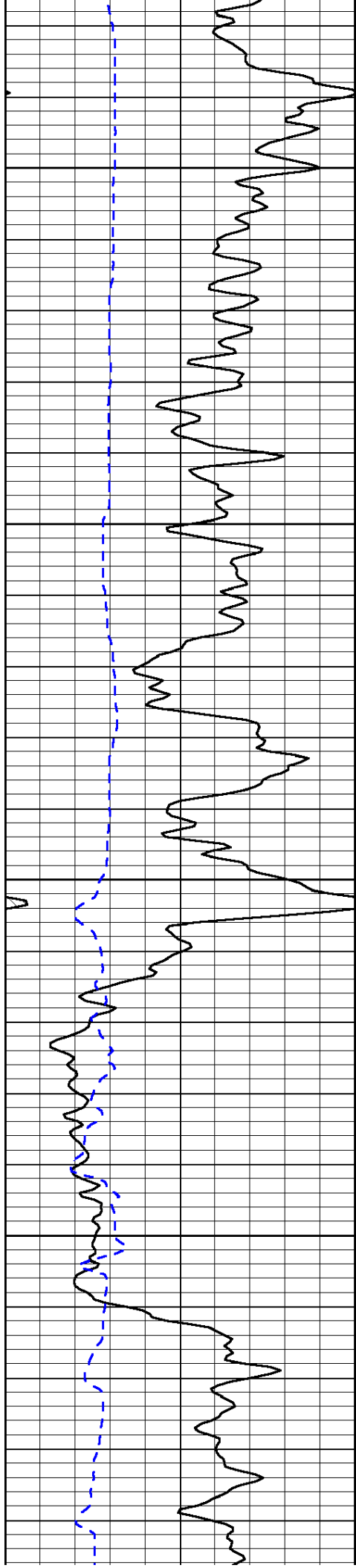
Database File: murfin_dcfyunit_1-11hd.db
 Dataset Pathname: dil/murfstk
 Presentation Format: sonic
 Dataset Creation: Mon May 13 03:01:11 2013
 Charted by: Depth in Feet scaled 1:240

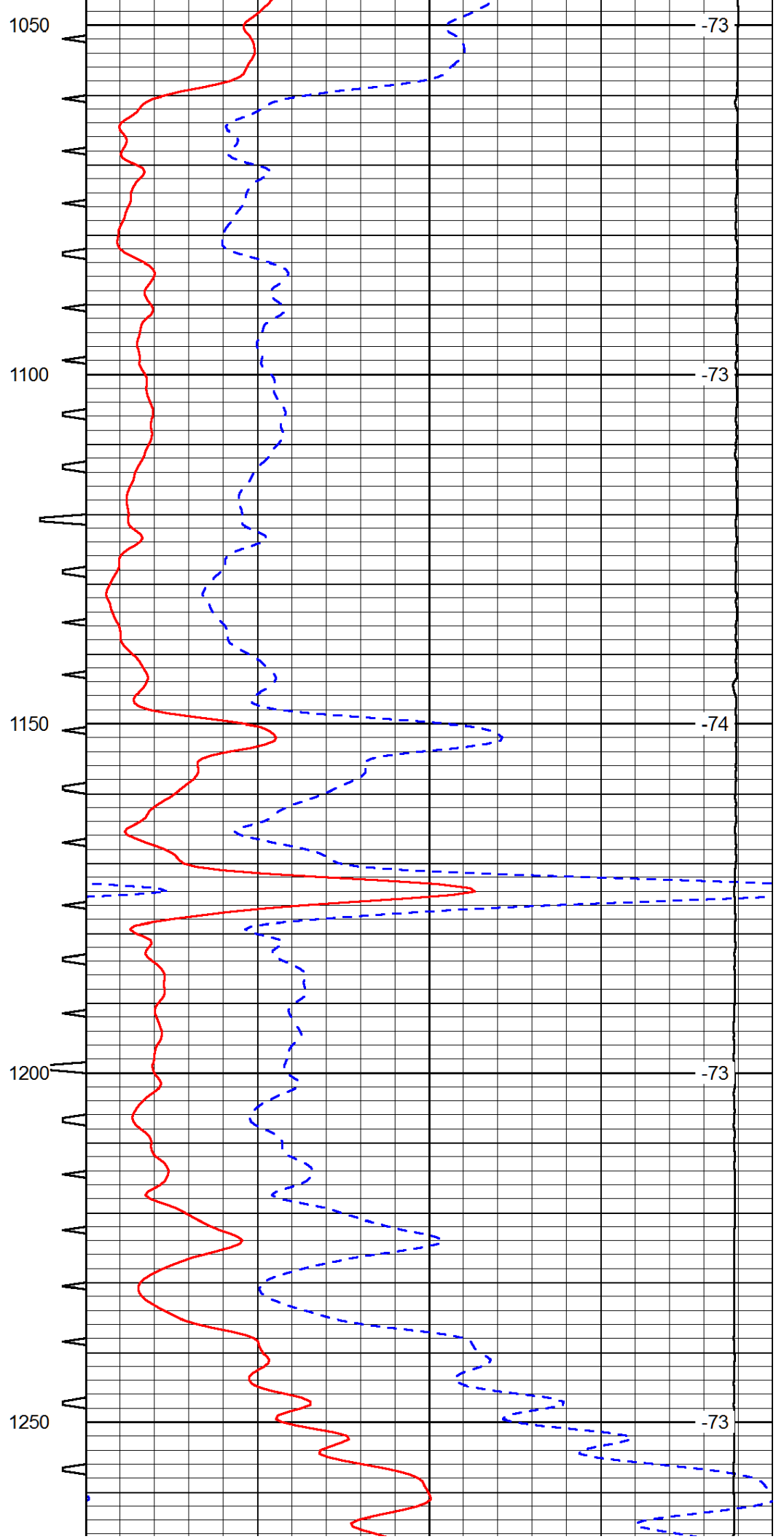
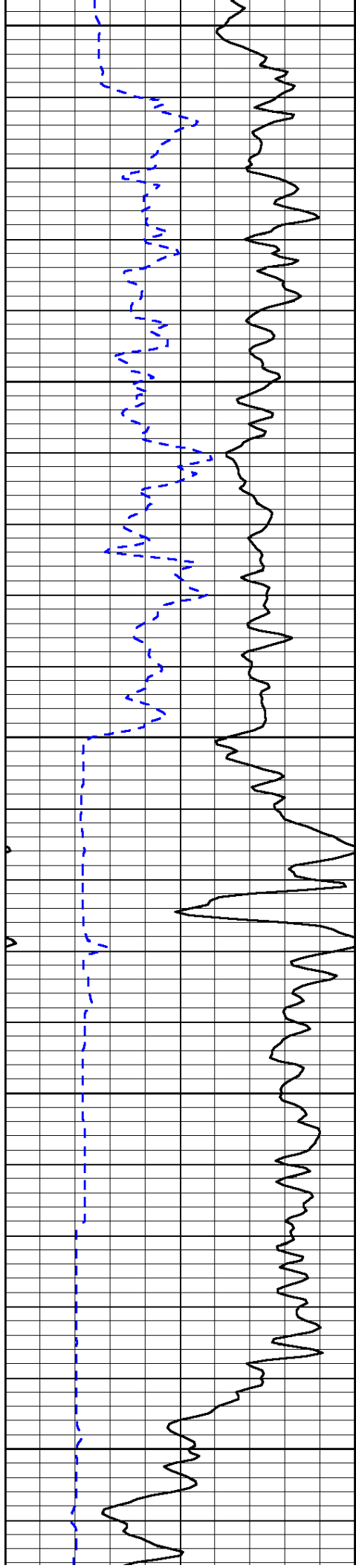
0	Gamma Ray (GAPI)	150	Sonic Int	140	Delta Time (usec/ft) (usec/ft)	40
150	Gamma Ray (GAPI)	300	5 (msec) 0	30	Sonic Porosity (pu)	-10
6	dCAL (in)	16		15000	LTEN (lb) (lb)	0
						LSPD (ft/min)

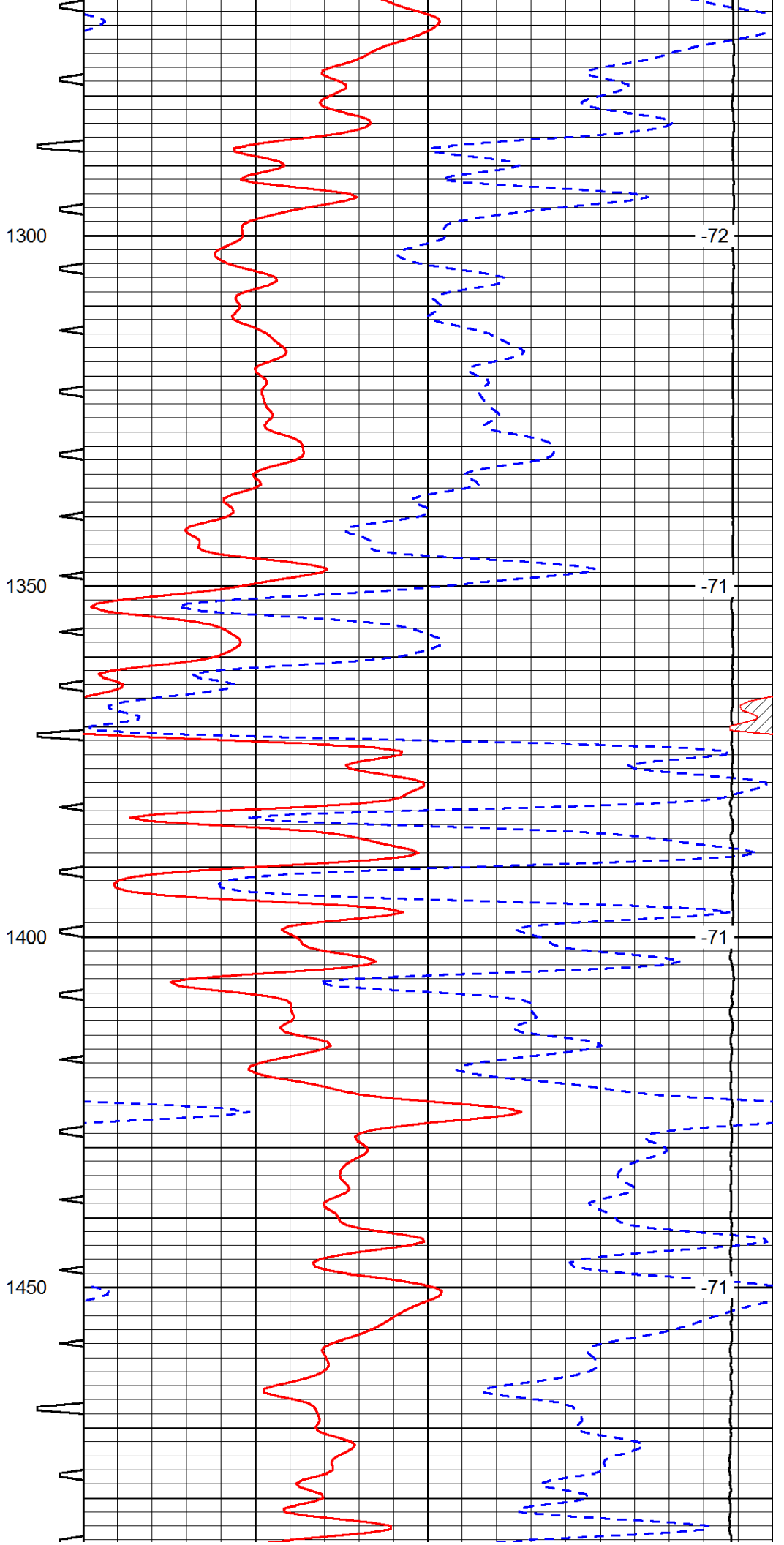
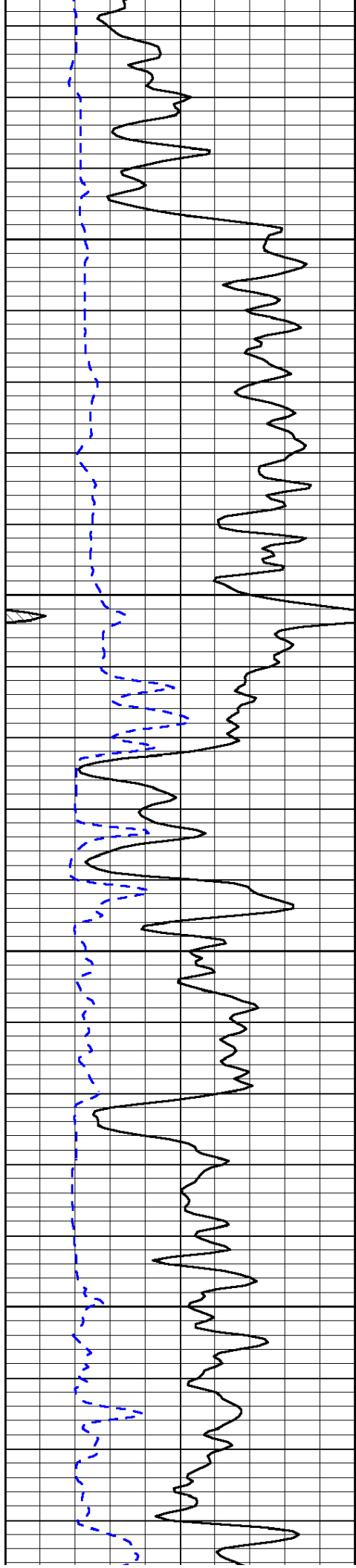


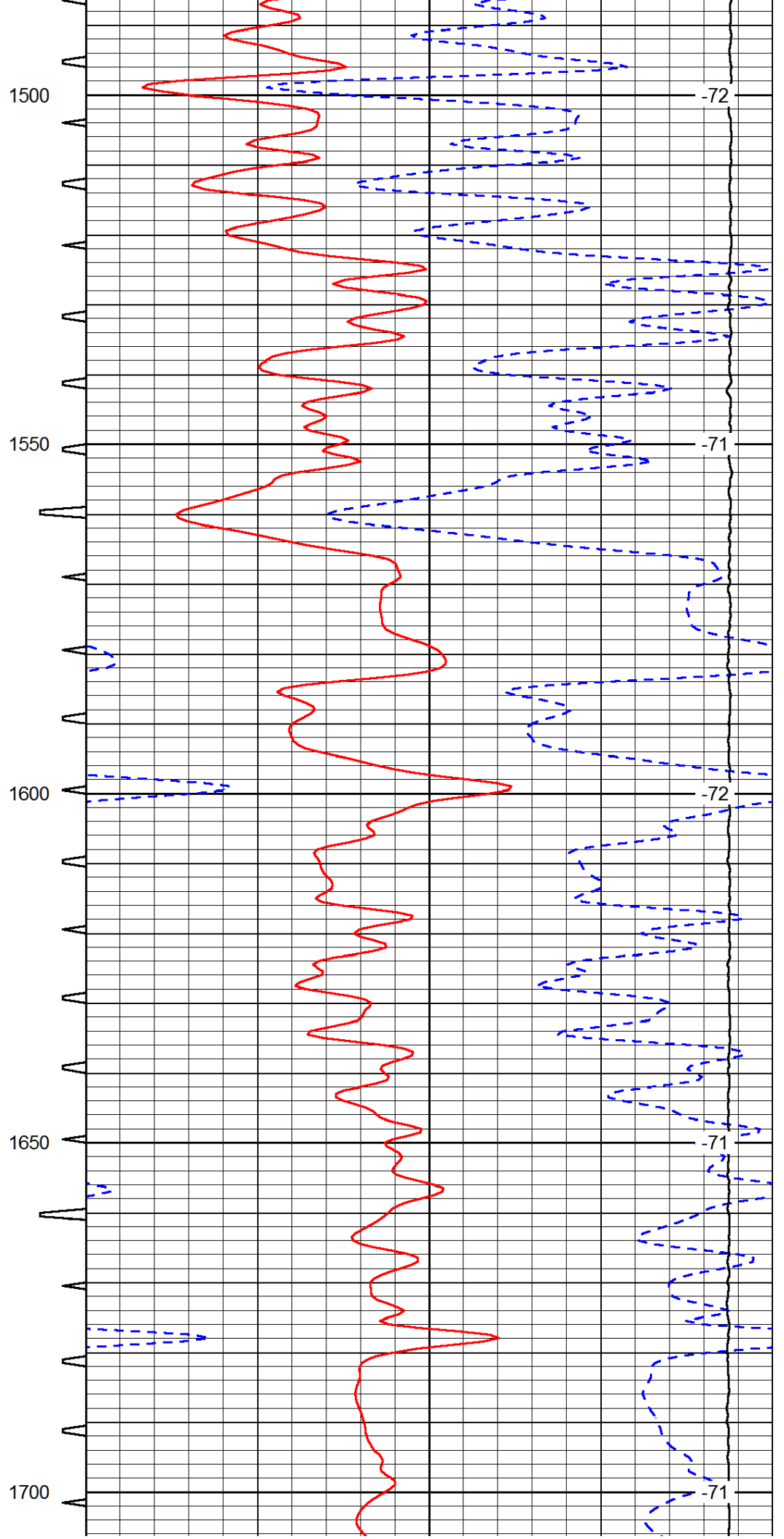
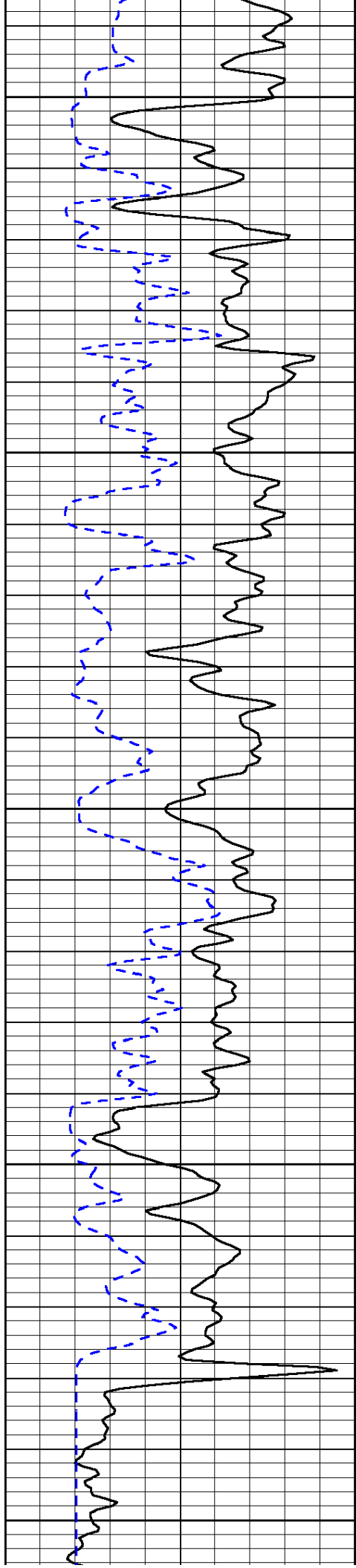


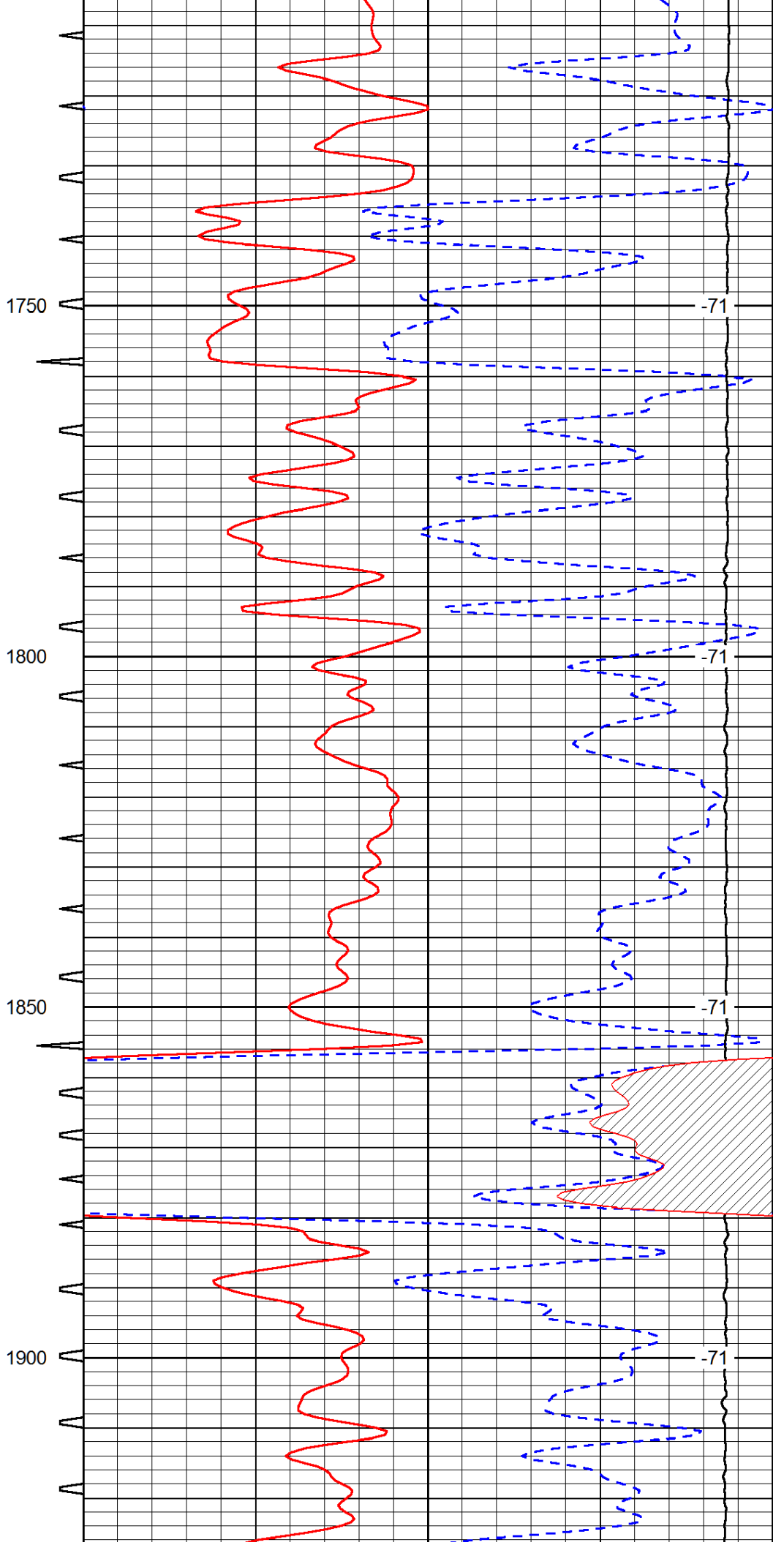
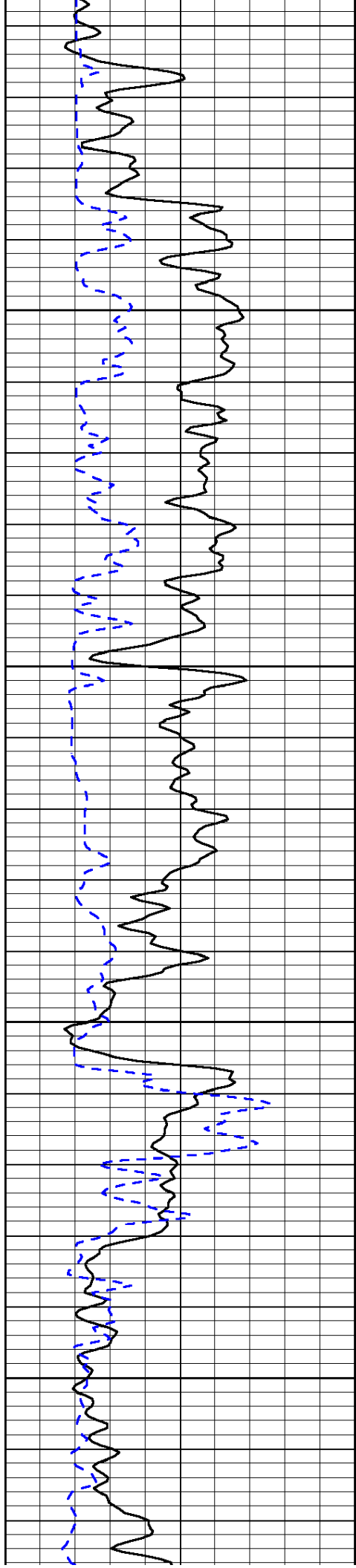


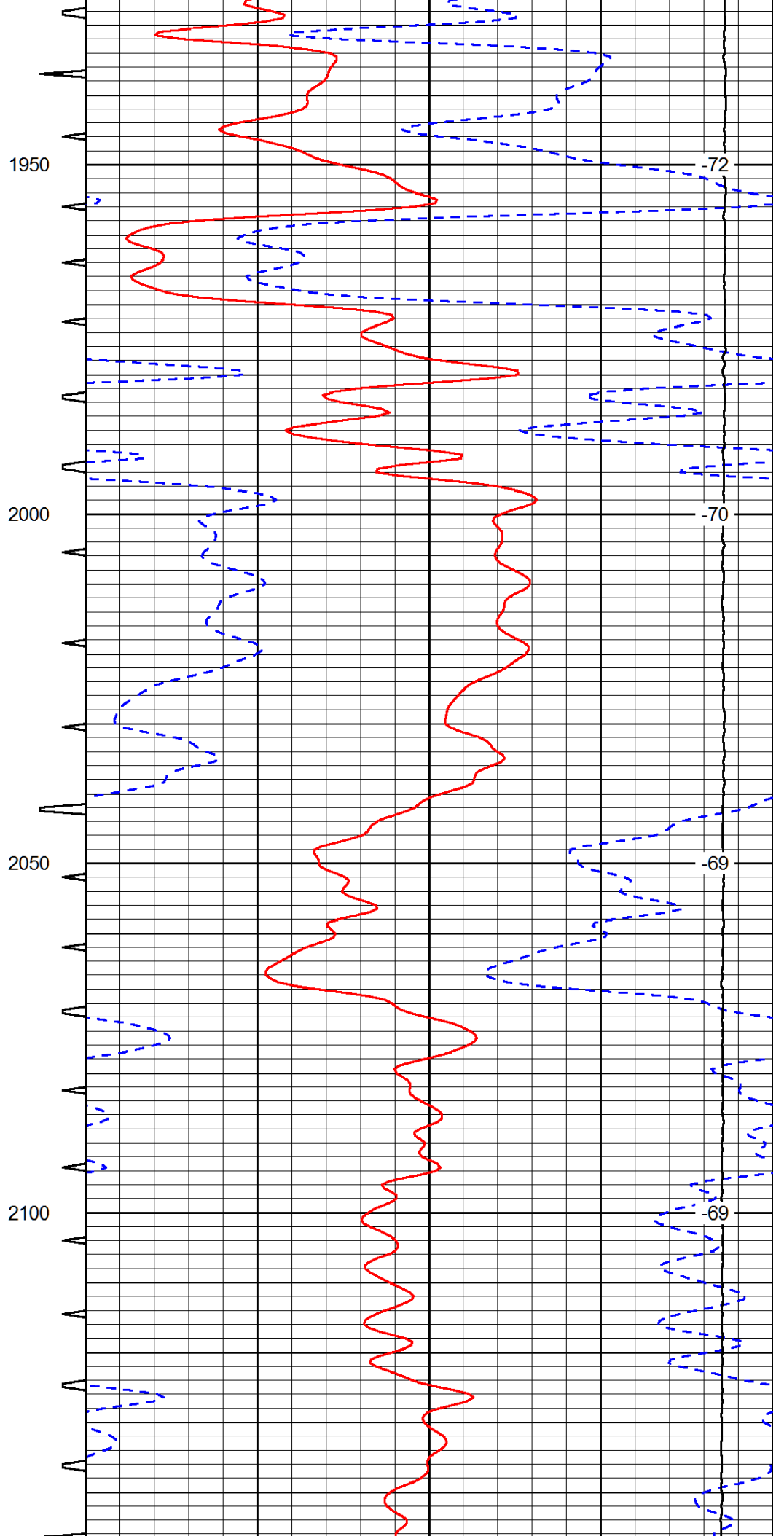
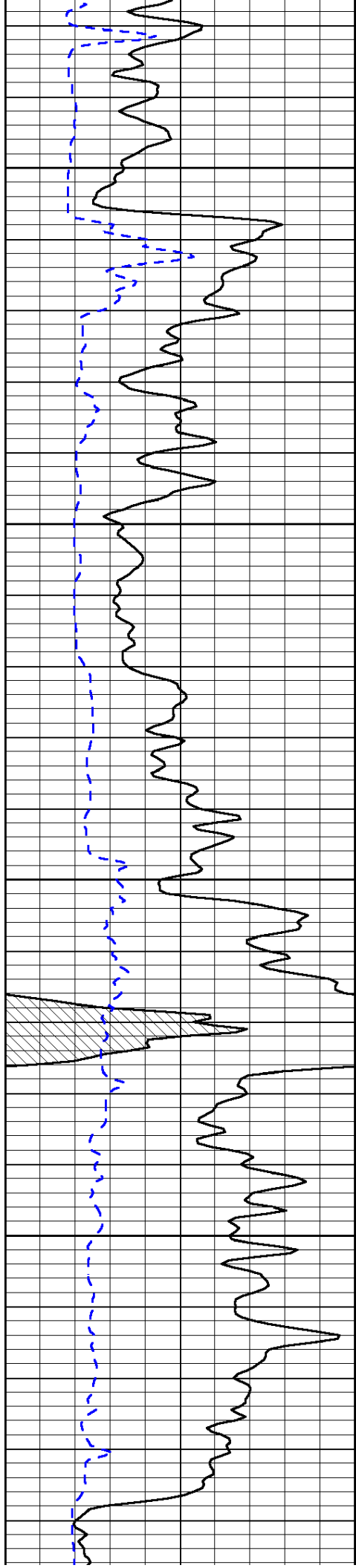


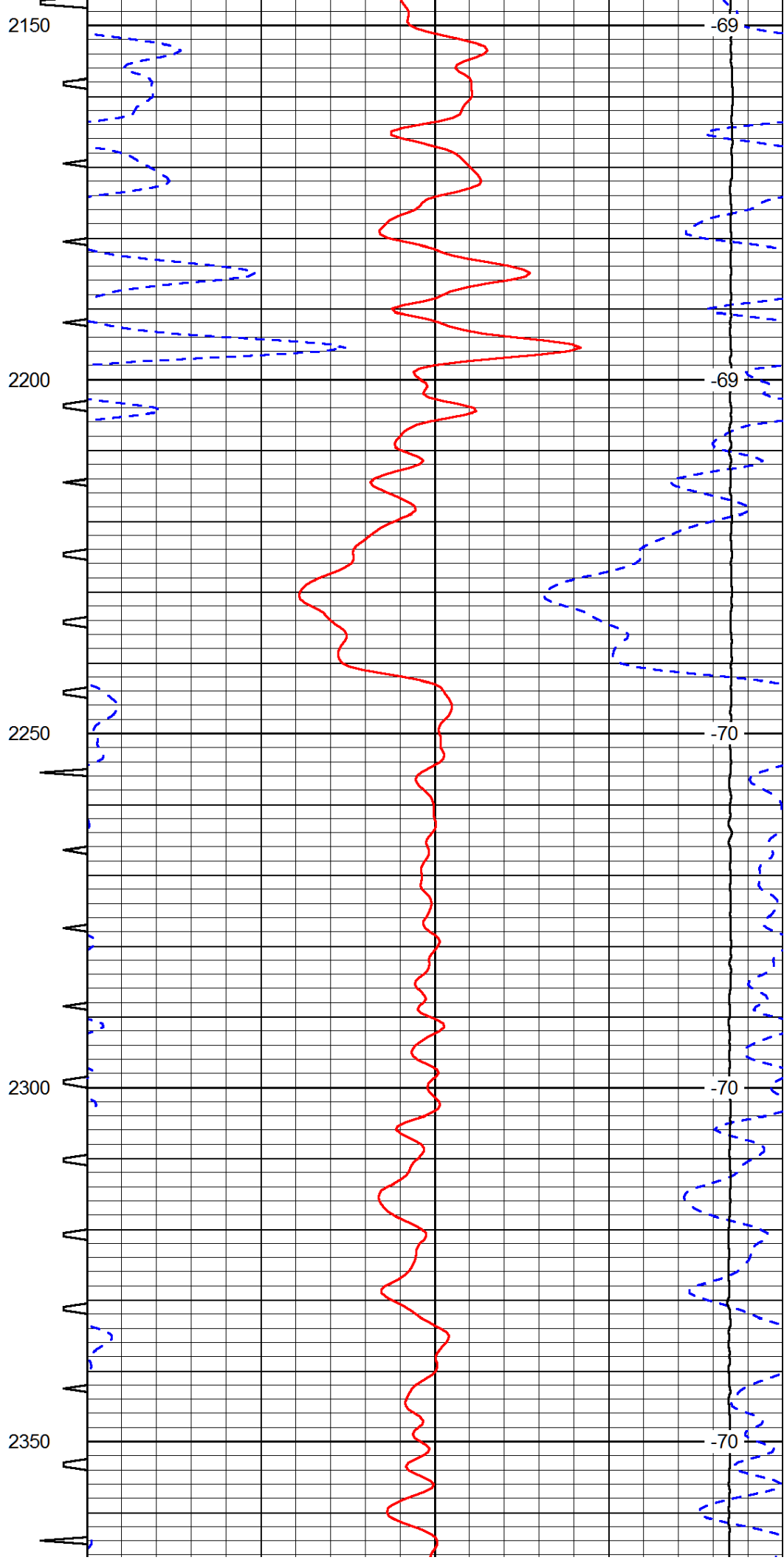
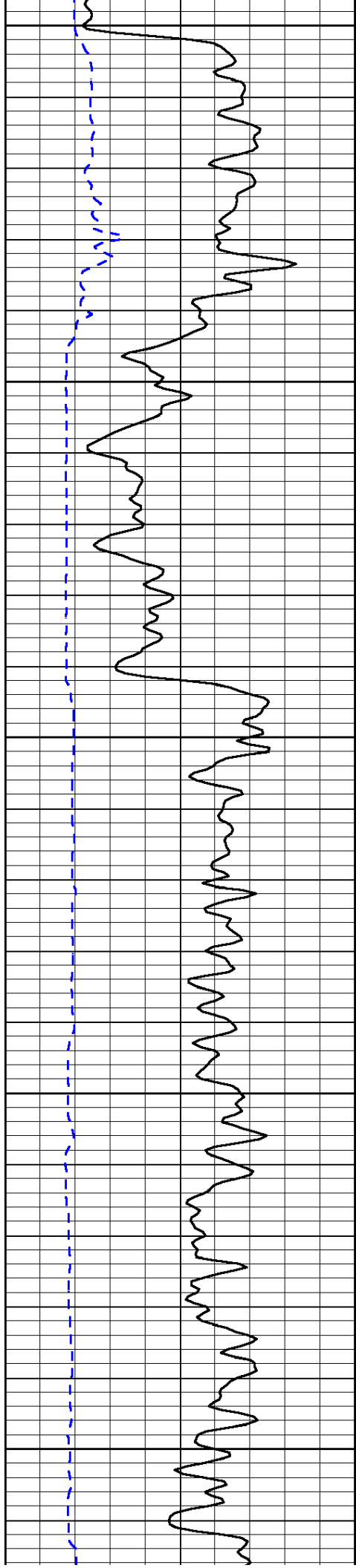


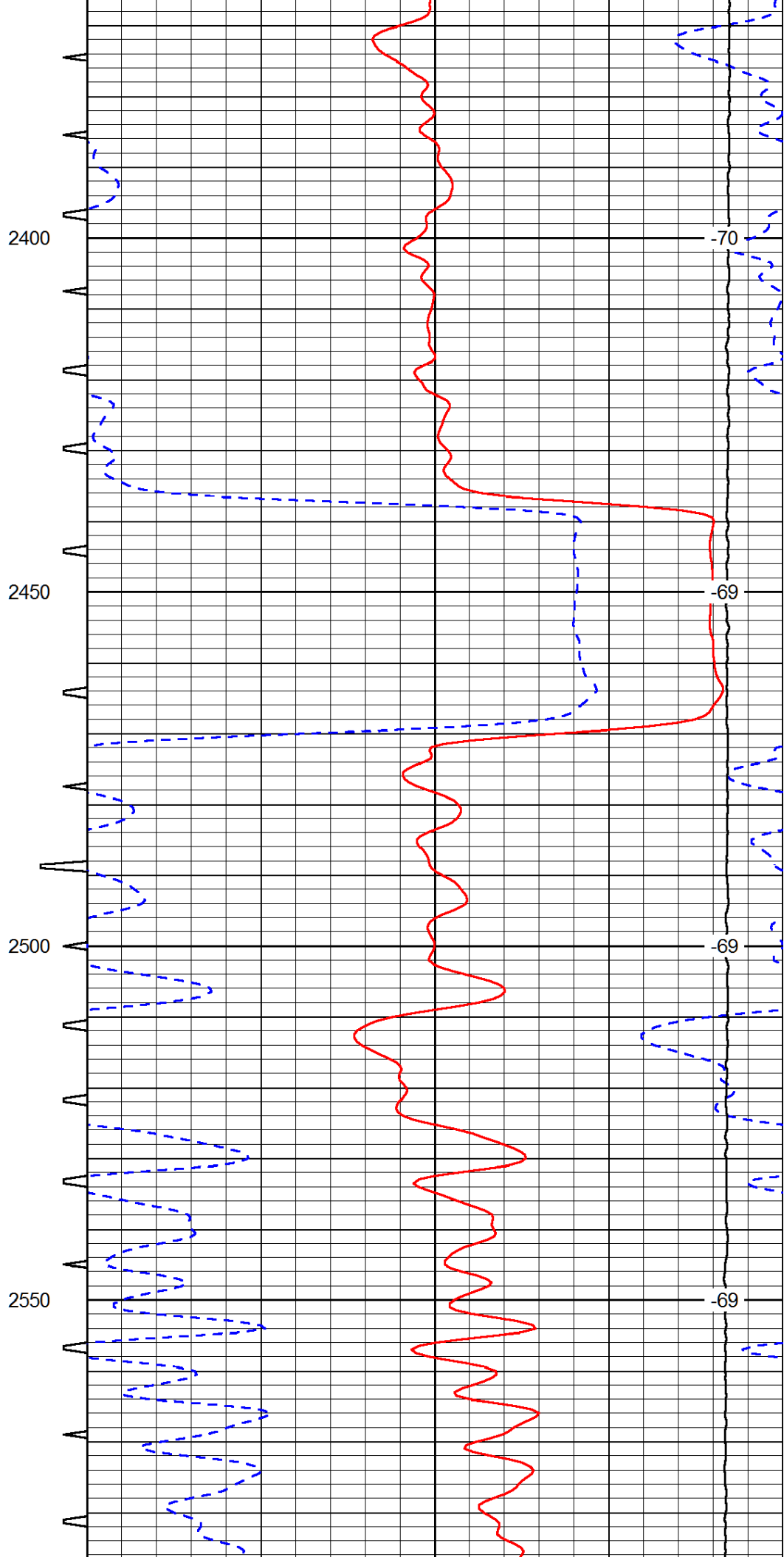
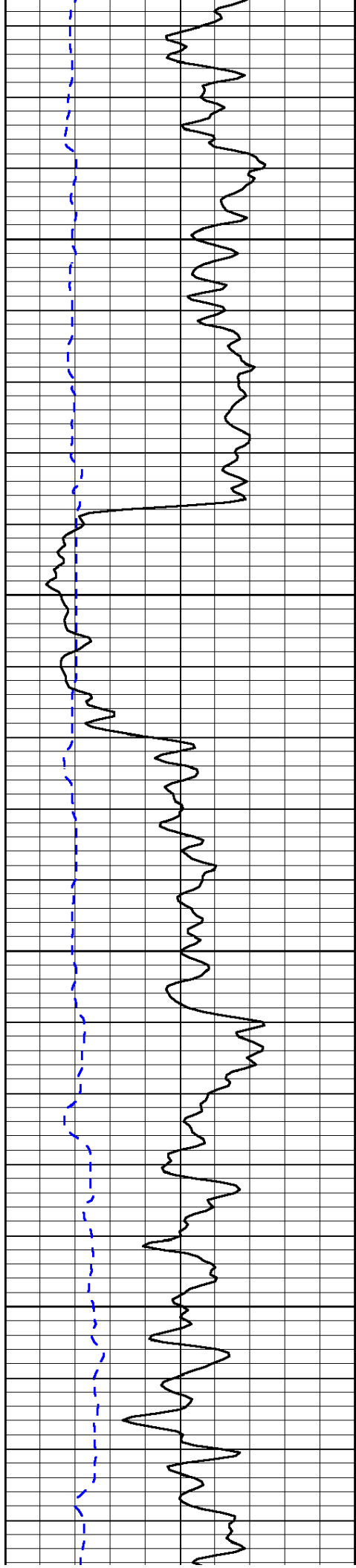


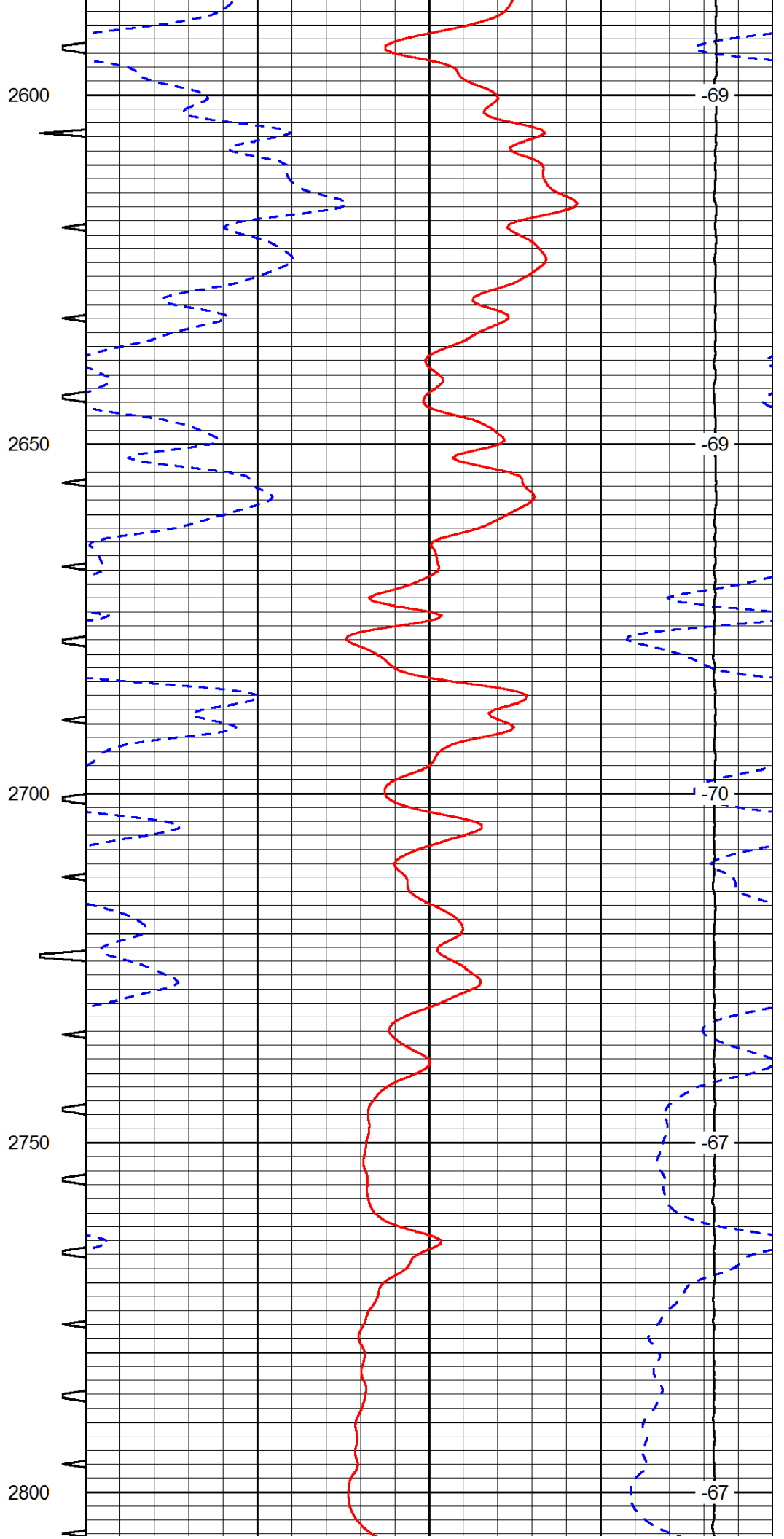
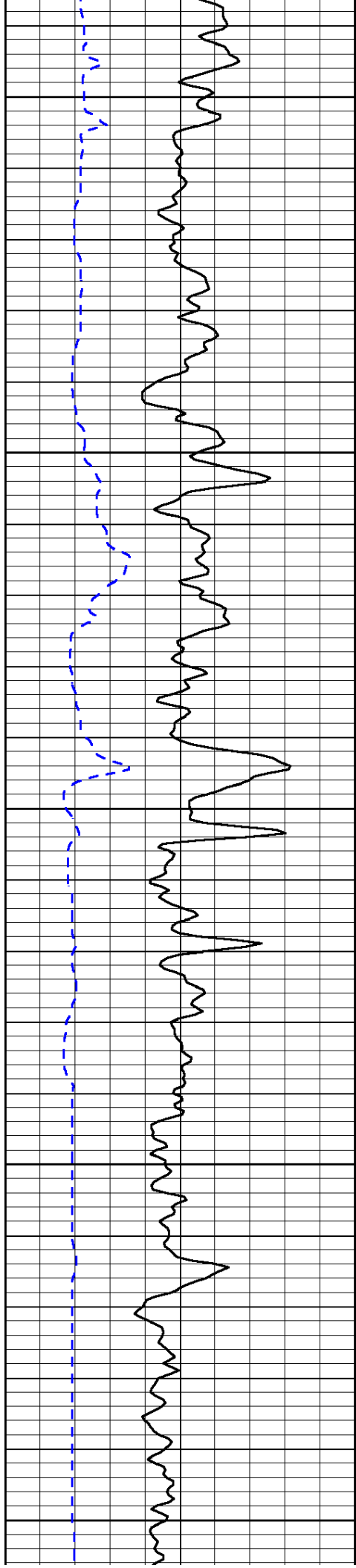


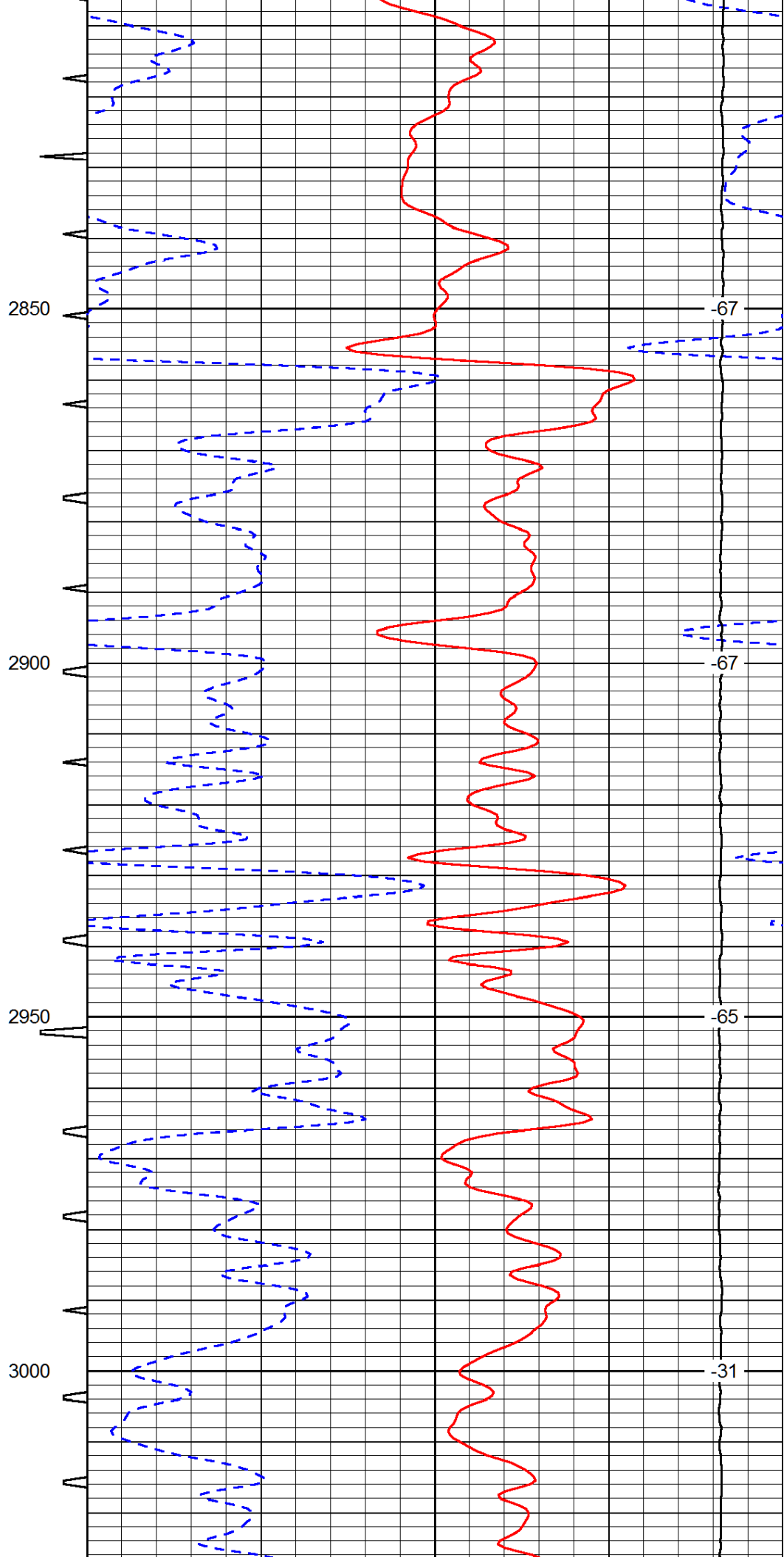
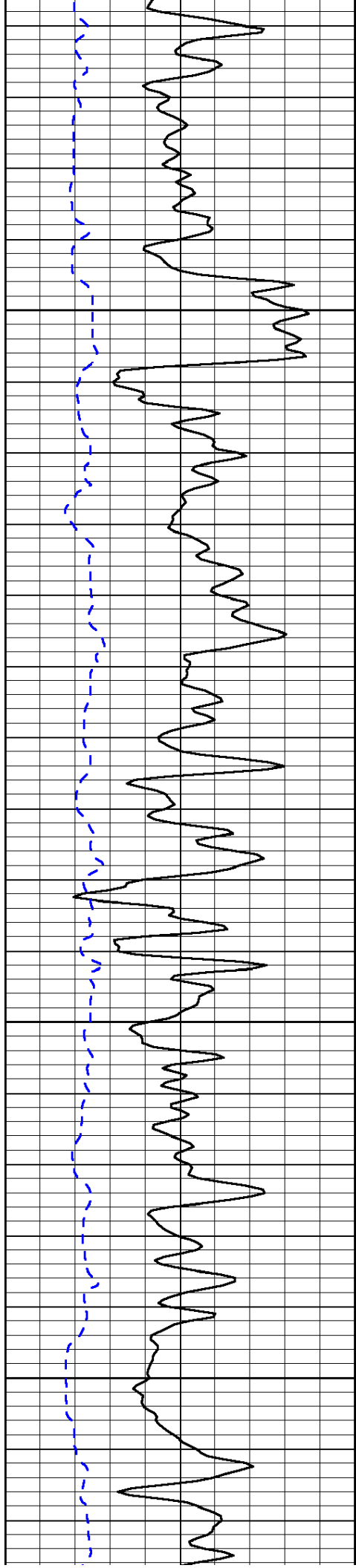


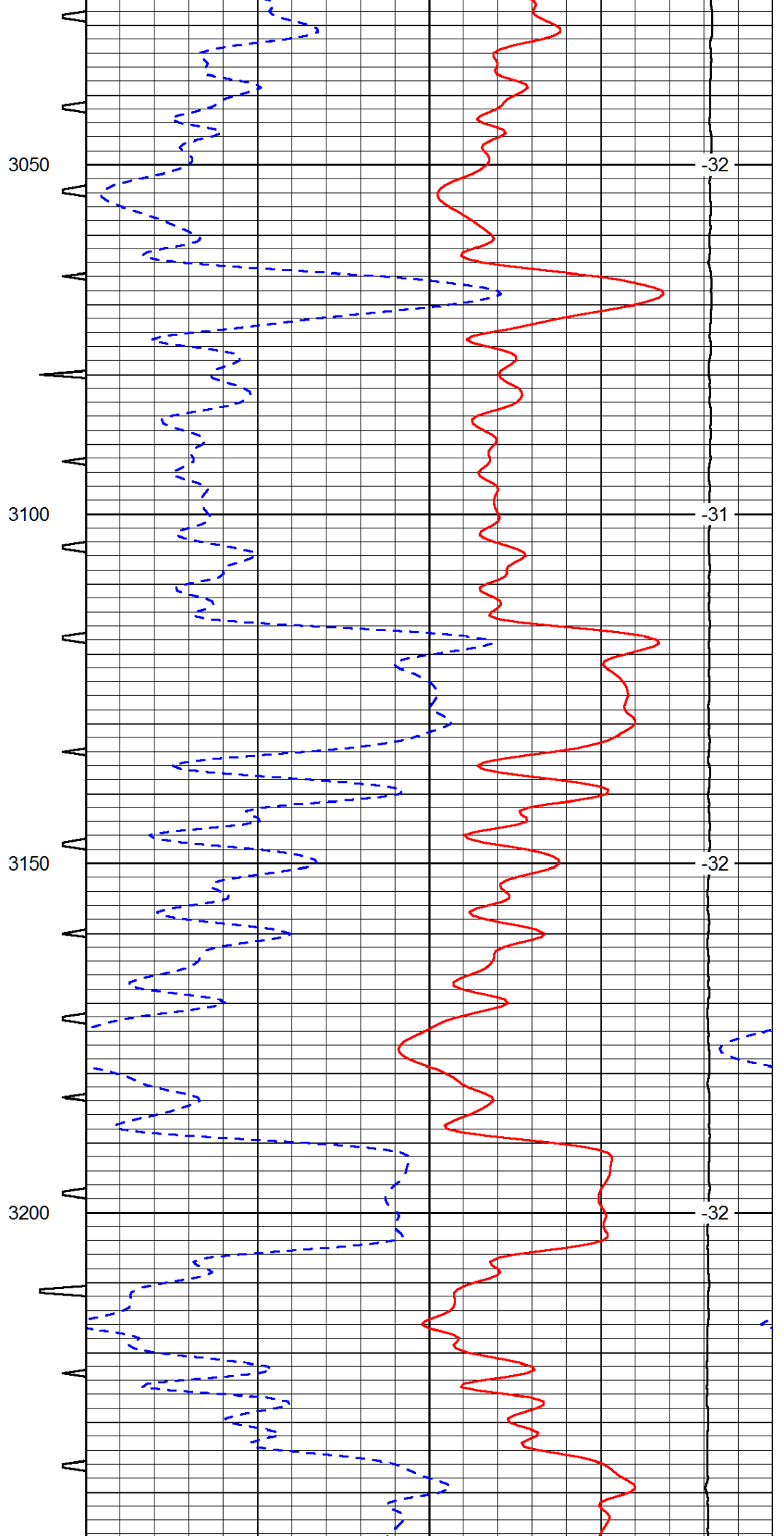
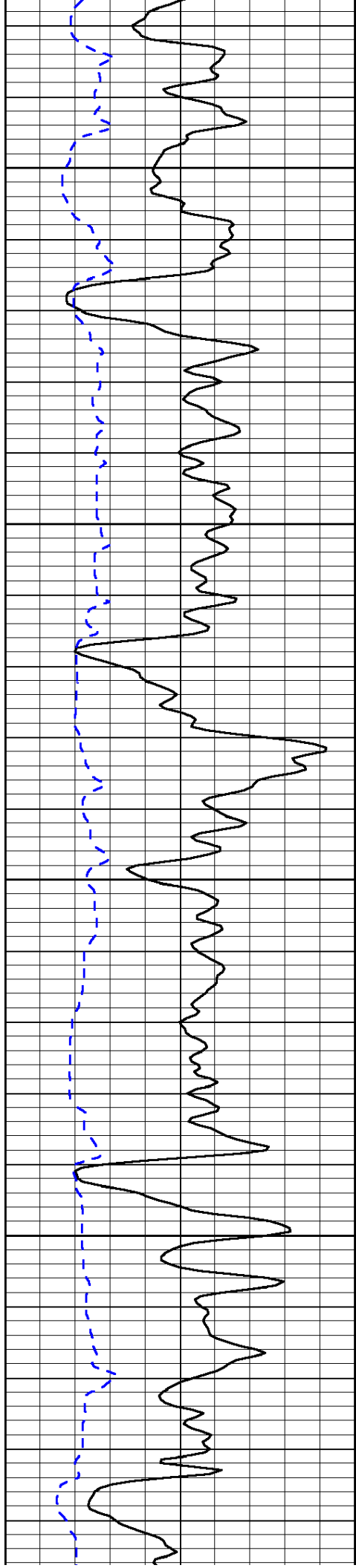


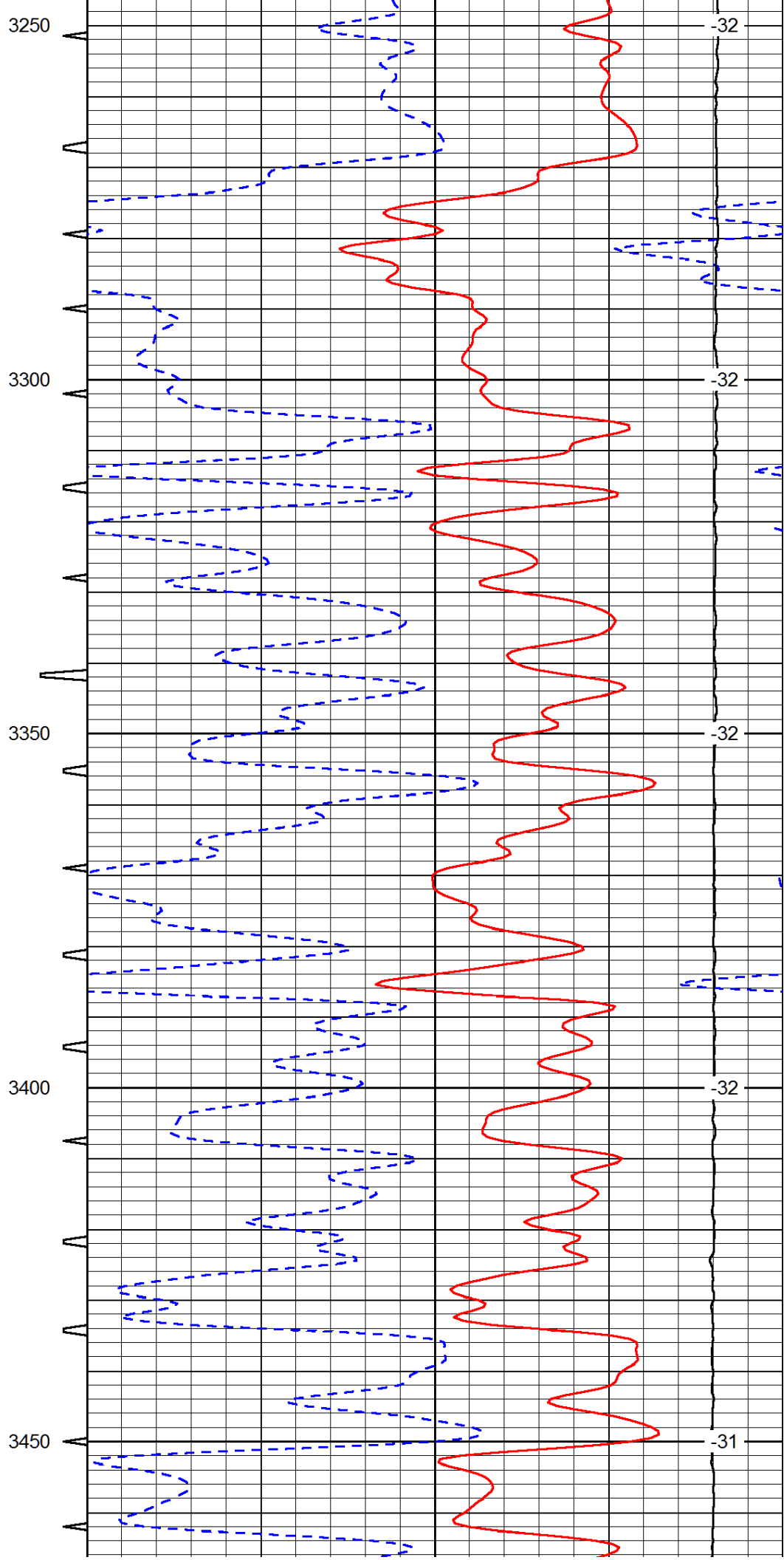
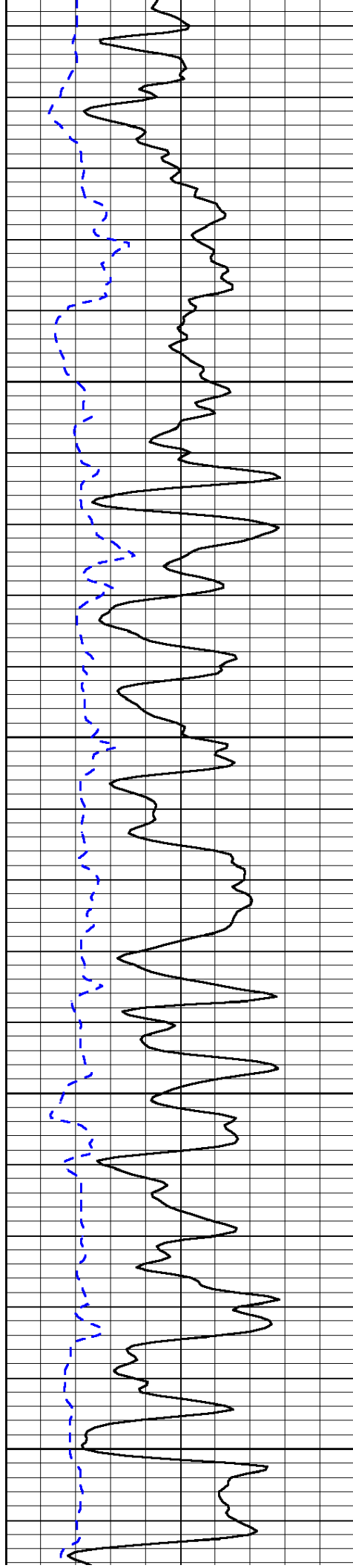


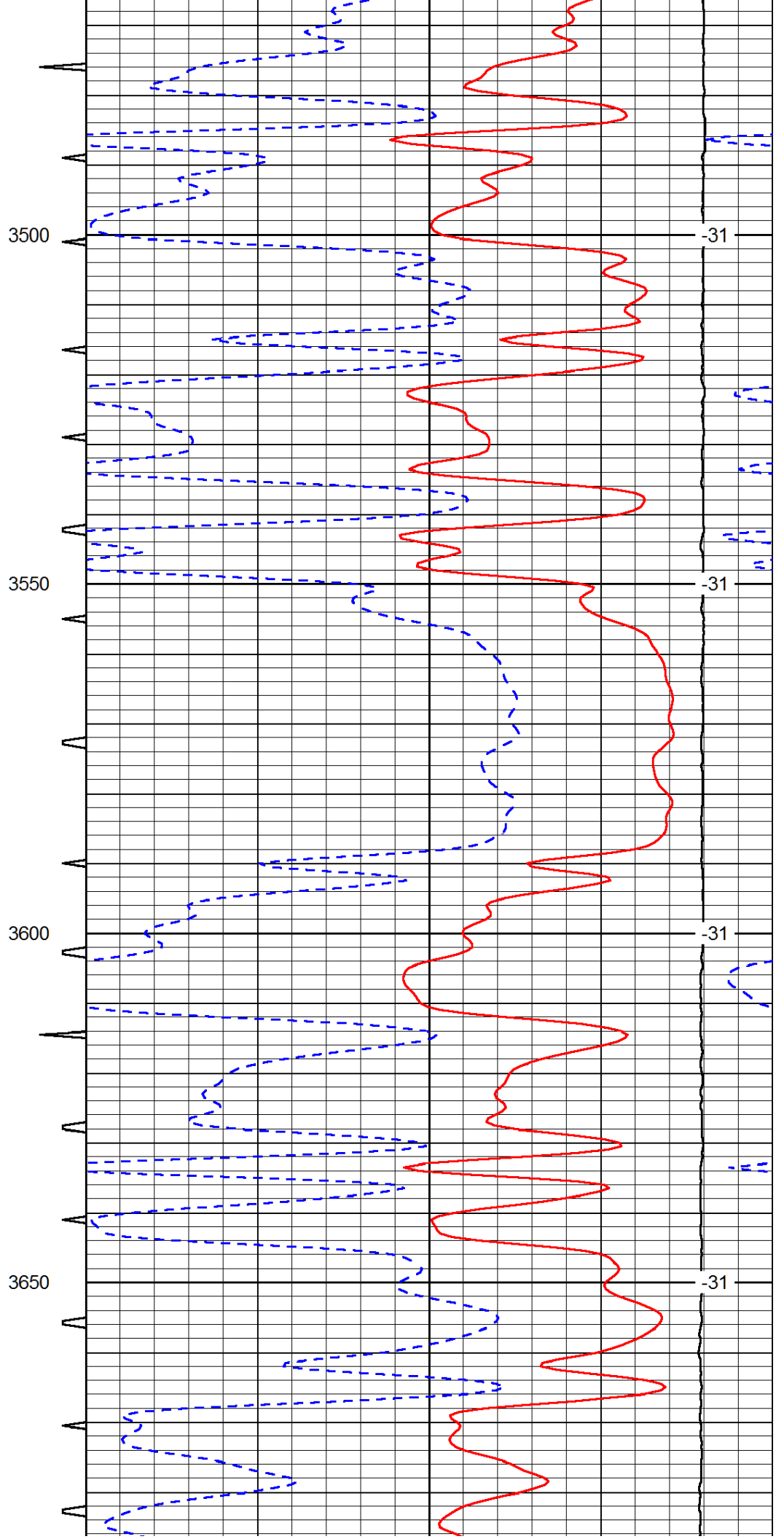
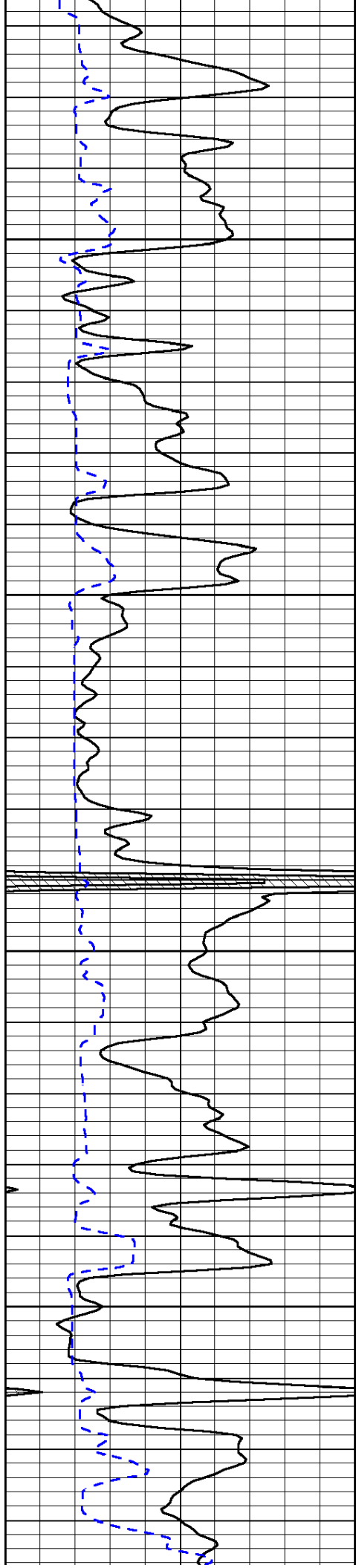


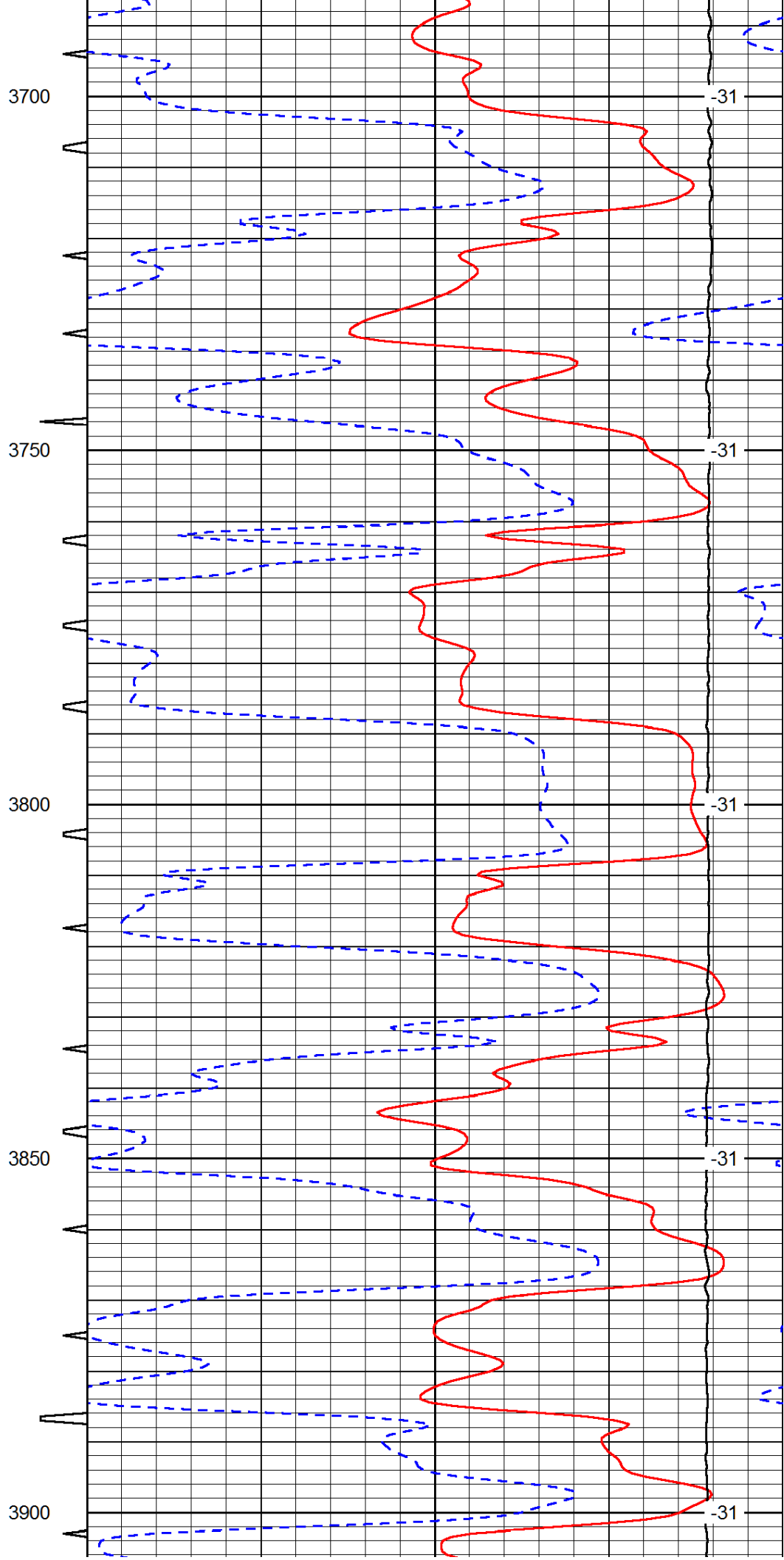
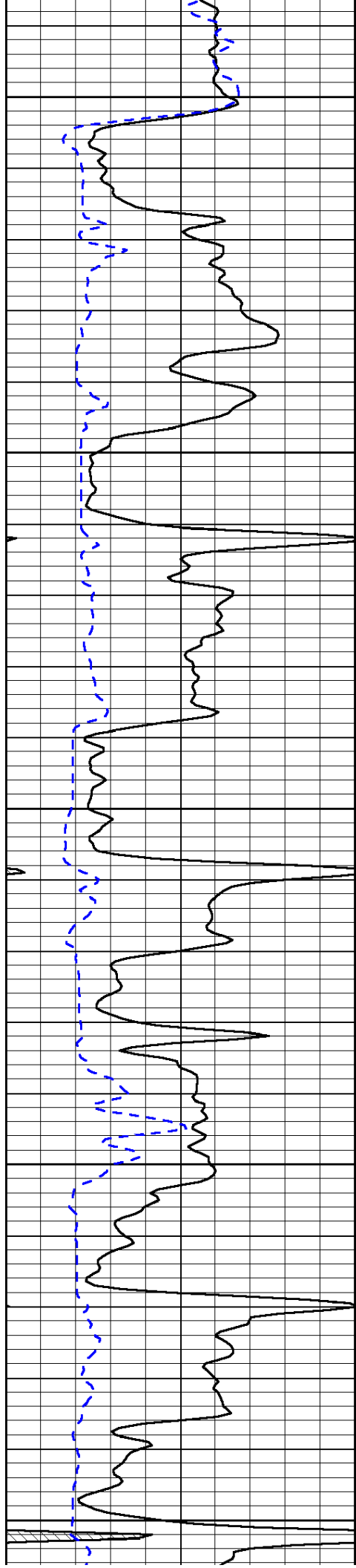


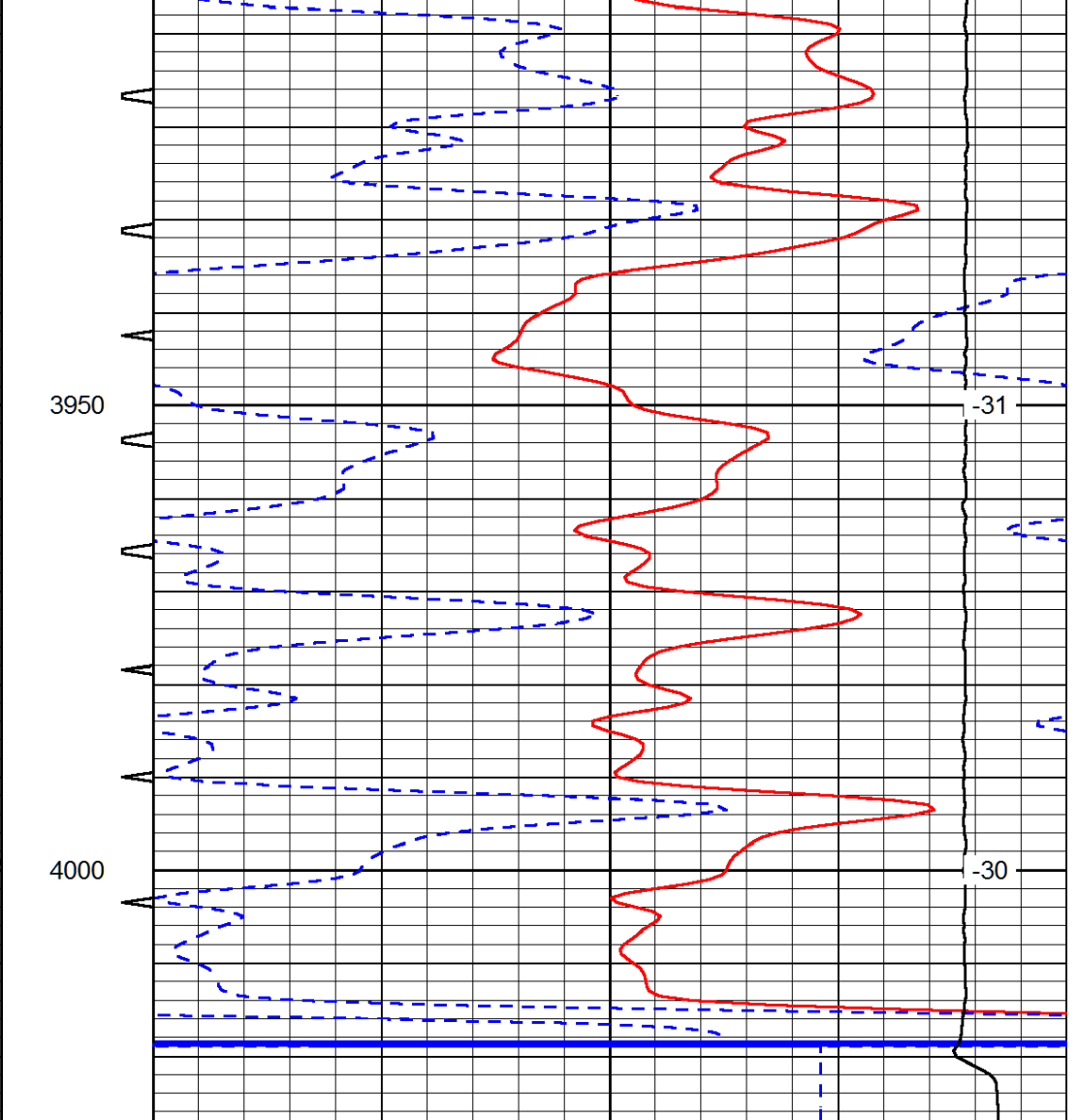
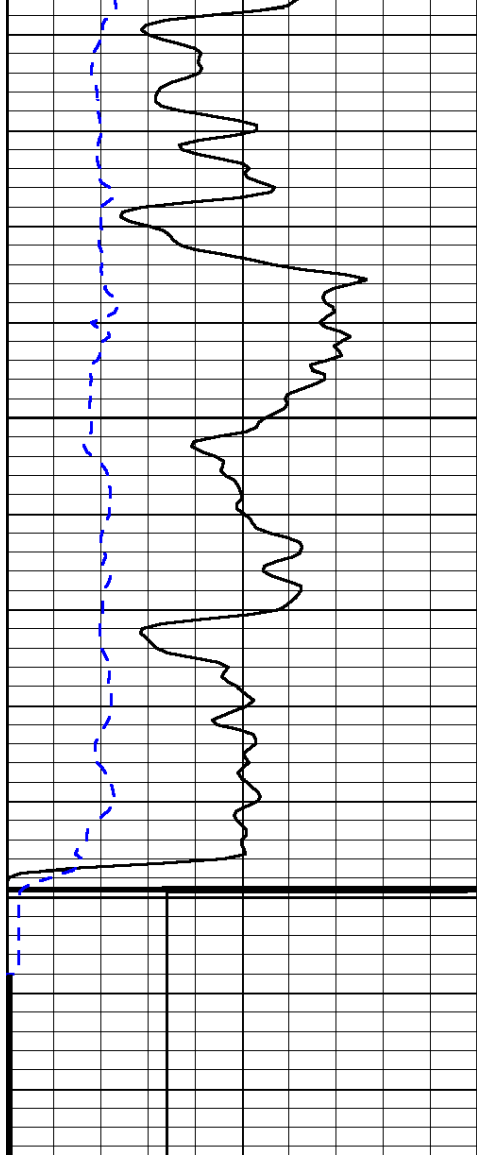












0	Gamma Ray (GAPI)	150	Sonic Int	140	Delta Time (usec/ft) (usec/ft)	40
150	Gamma Ray (GAPI)	300	5 (msec) 0	30	Sonic Porosity (pu)	-10
6	dCAL (in)	16		15000	LTEN (lb) (lb)	0

LSPD
(ft/min)