



Pioneer Energy Services

Sonic Cement  
Bond Log

15-171-20956-00-00

Company Shakespeare Oil Company, Inc.  
Well Janzen No. 1-34  
Field Wildcat  
County Scott  
State Kansas

Location 1363' FNL & 339' FEL  
NW-NE-SE-NE

Sec: 34 Twp: 16S Rge: 34W

Permanent Datum Ground Level Elevation 3119  
Log Measured From Kelly Bushing 7 Ft. Above Perm. Datum  
Drilling Measured From Kelly Bushing

Other Services  
Perforate  
Elevation  
K.B. 3126  
D.F. 3124  
G.L. 3119

Run Number	One
Date Survey	8/12/2013
Date Cementing	7/14/2013
Type Cementing Operation	Primary
Depth Driller	4895
Depth Logger	4822
Logged Interval	4820 to 3600
Casing Driller	5.5 @ T.D.
Float Collar -- D.V. Tool	2398 @
Squeeze Depth	
Amount & Type Cement	
Amount & Type Admix	
Type Fluid In Hole	Water
Fluid Level	Full
Salinity PPM CL	
Weight lb/gal -- Vis.	
Approx. Logged Cement Top	3785
Calculated Cement Top	
Max. Hole Temperature	116
Tool No.	D-1
Spacing Recorded	3-5
Equipment -- Location	72 Hays
Recorded By	K. Ladrigan
Witnessed By	Tom Larson

<<< Fold Here >>>

All interpretations are opinions based on inferences from electrical or other measurements and we cannot and do not guarantee the accuracy or correctness of any interpretation, and we shall not, except in the case of gross or willful negligence on our part, be liable or responsible for any loss, costs, damages, or expenses incurred or sustained by anyone resulting from any interpretation made by any of our officers, agents or employees. These interpretations are also subject to our general terms and conditions set out in our current Price Schedule.

Comments

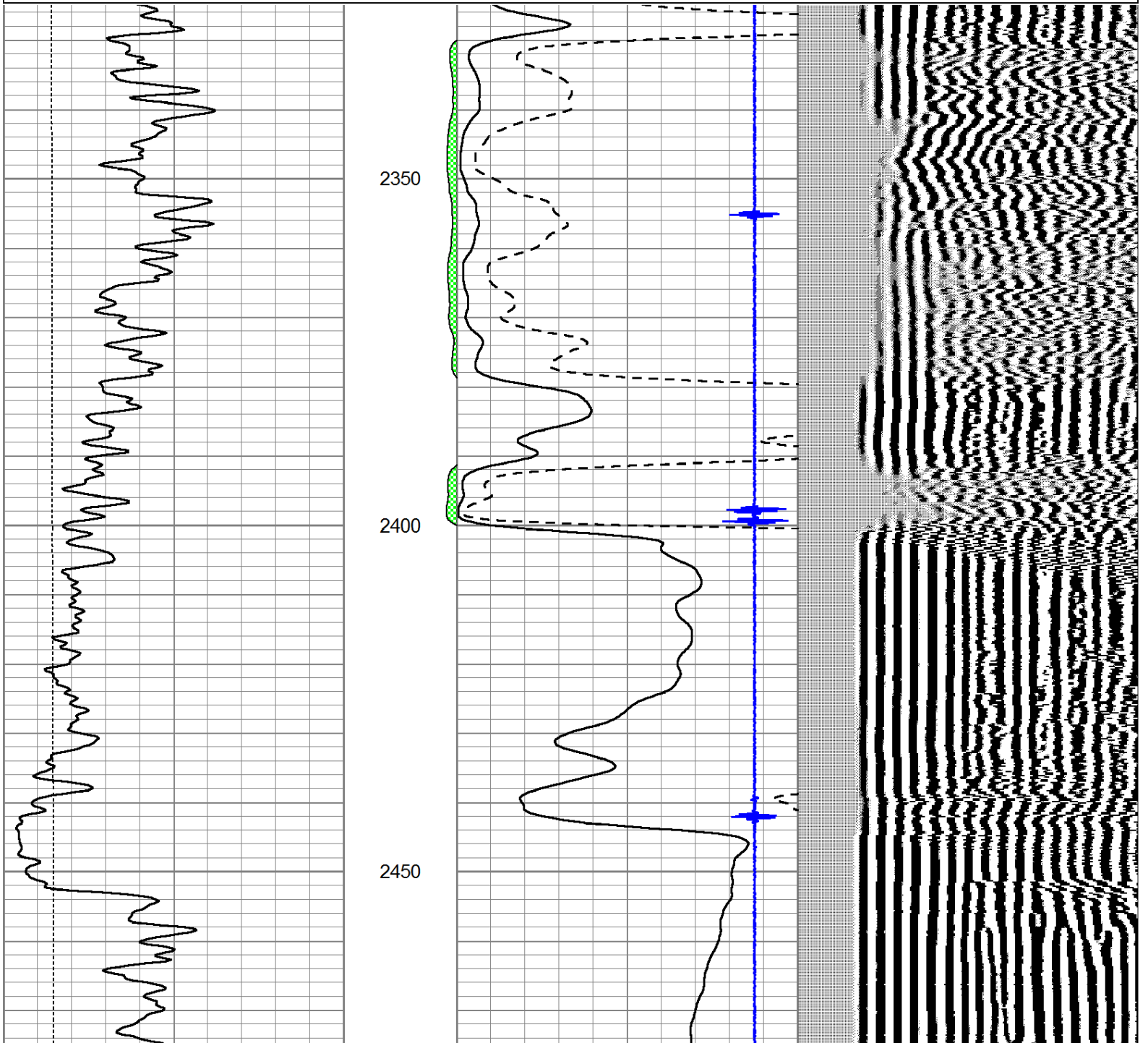
Thank you for using Pioneer Energy Services, Inc. 785.625.3858  
  
Pence, KS., East to Eagle Road, 2.125 South Past Farm House  
1 West Into.



Port Collar @ 2398

Database File: shake\_janzen1-34\_cbl.db  
 Dataset Pathname: sgrcbl/pass5  
 Presentation Format: cbl dig  
 Dataset Creation: Mon Aug 12 14:13:39 2013 by Log SCH 111116  
 Charted by: Depth in Feet scaled 1:240

0	GR (GAPI)	150	AMP3	0	Amplitude (mV)	100	200	Variable Density	1200
0	LTEN (lb)	5000	(mV)	0	Amplified Amplitude (mV)	20			
			-100 10	7	Collar Locator	-1			

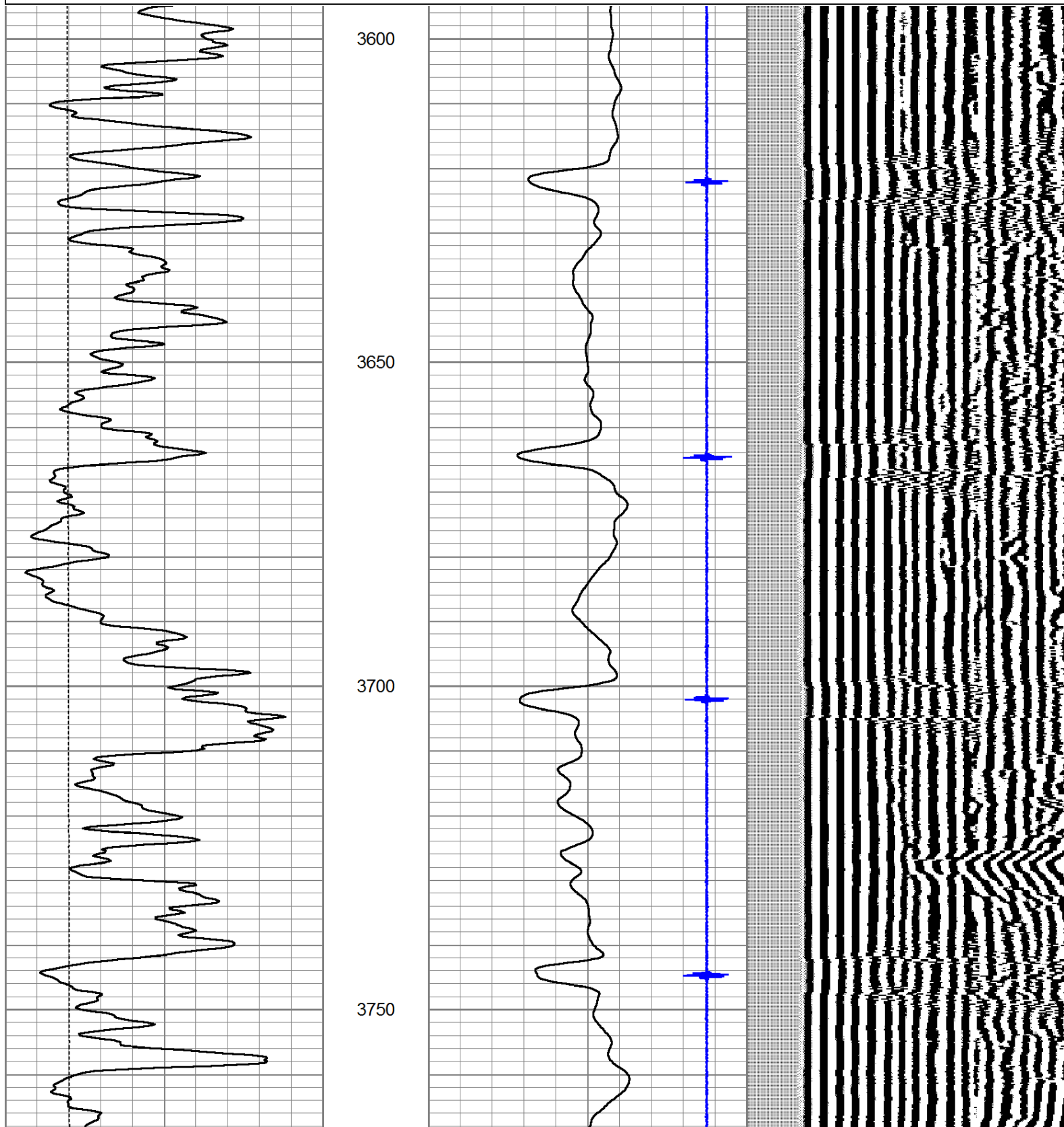


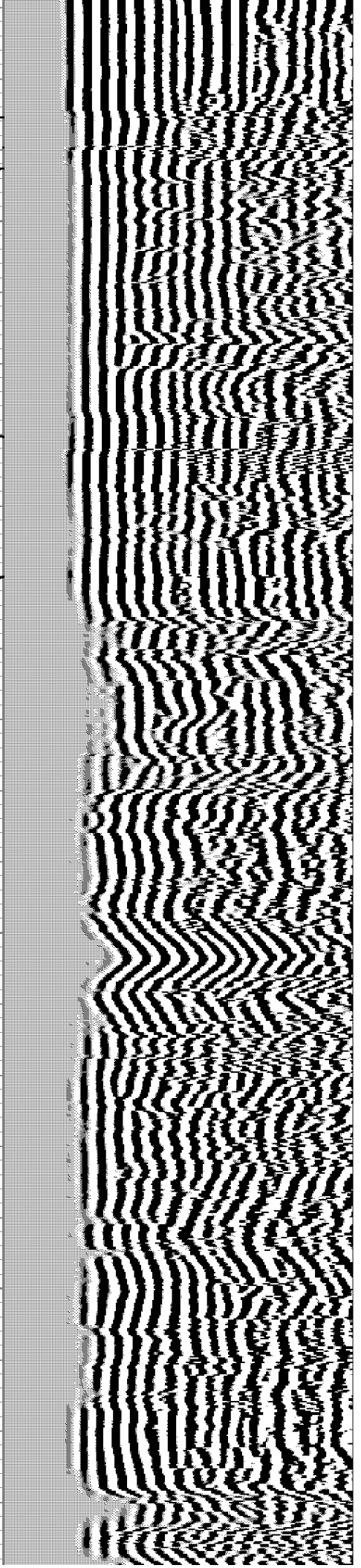
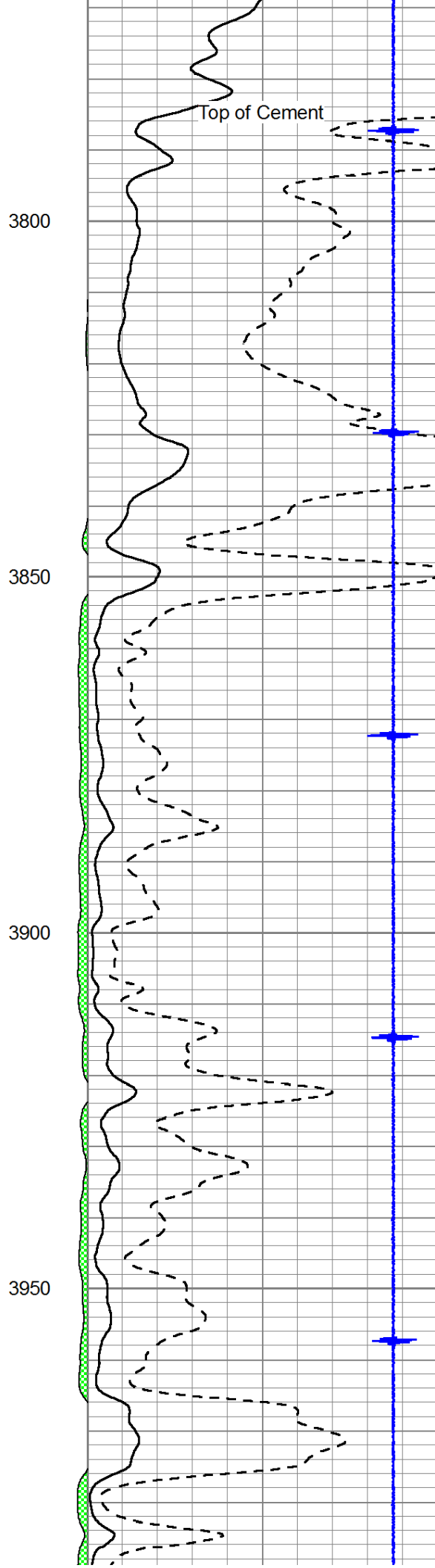
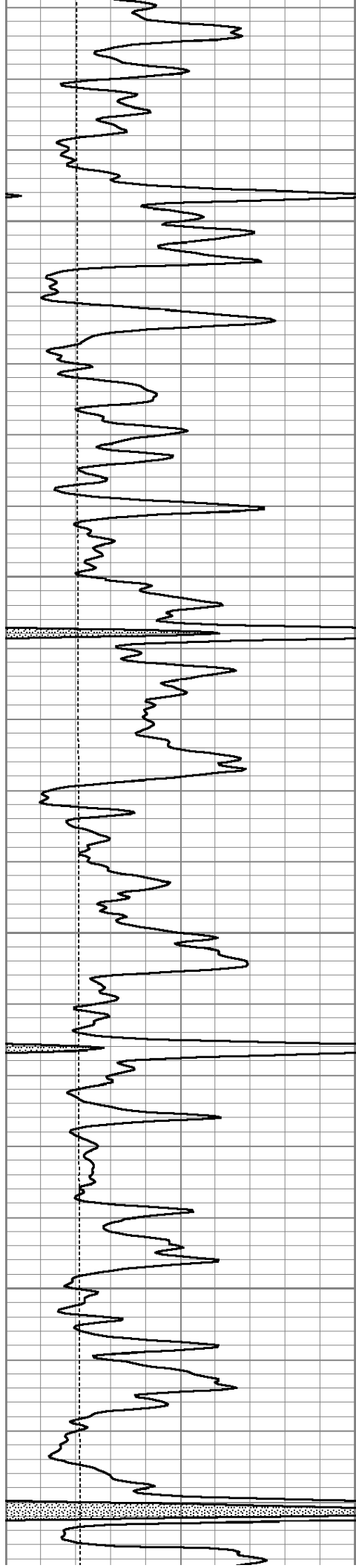
0	GR (GAPI)	150	AMP3	0	Amplitude (mV)	100	200	Variable Density	1200
0	LTEN (lb)	5000	(mV)	0	Amplified Amplitude (mV)	20			
			-100 10	7	Collar Locator	-1			

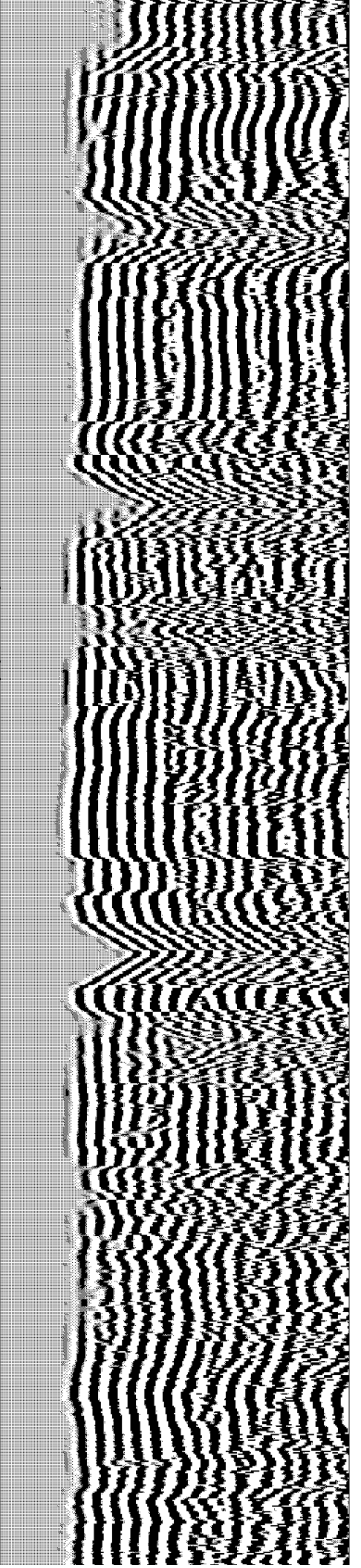
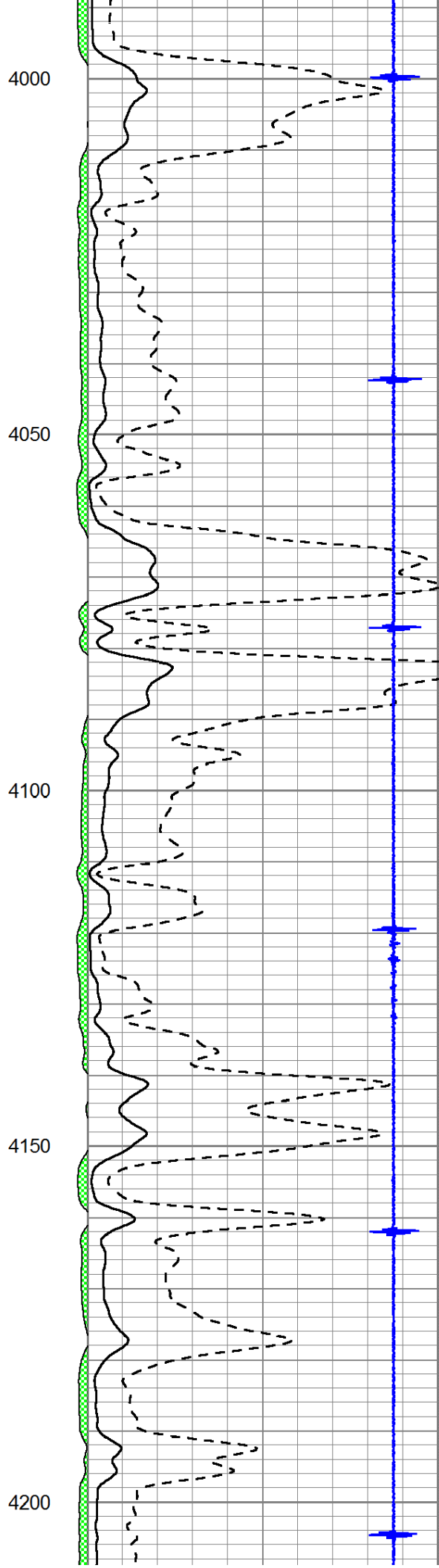
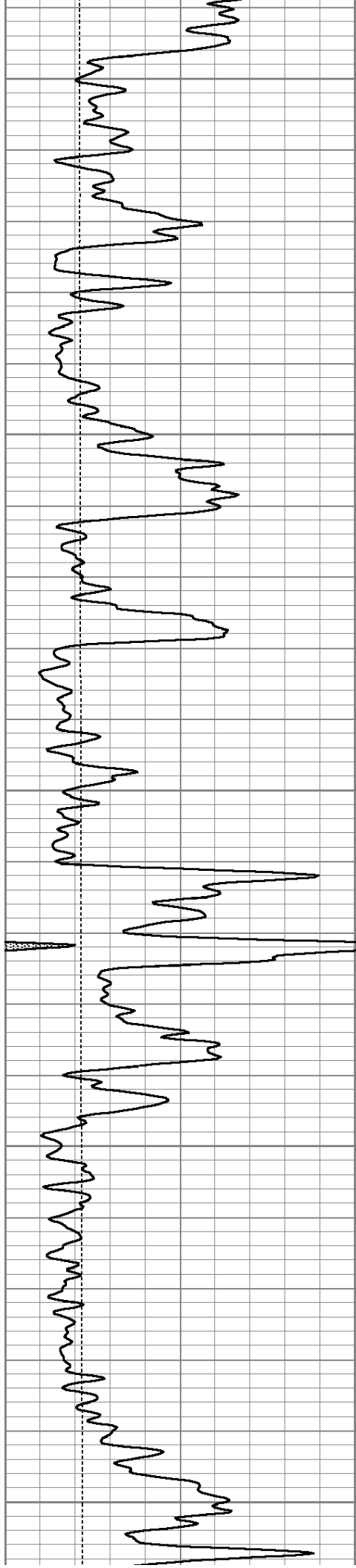


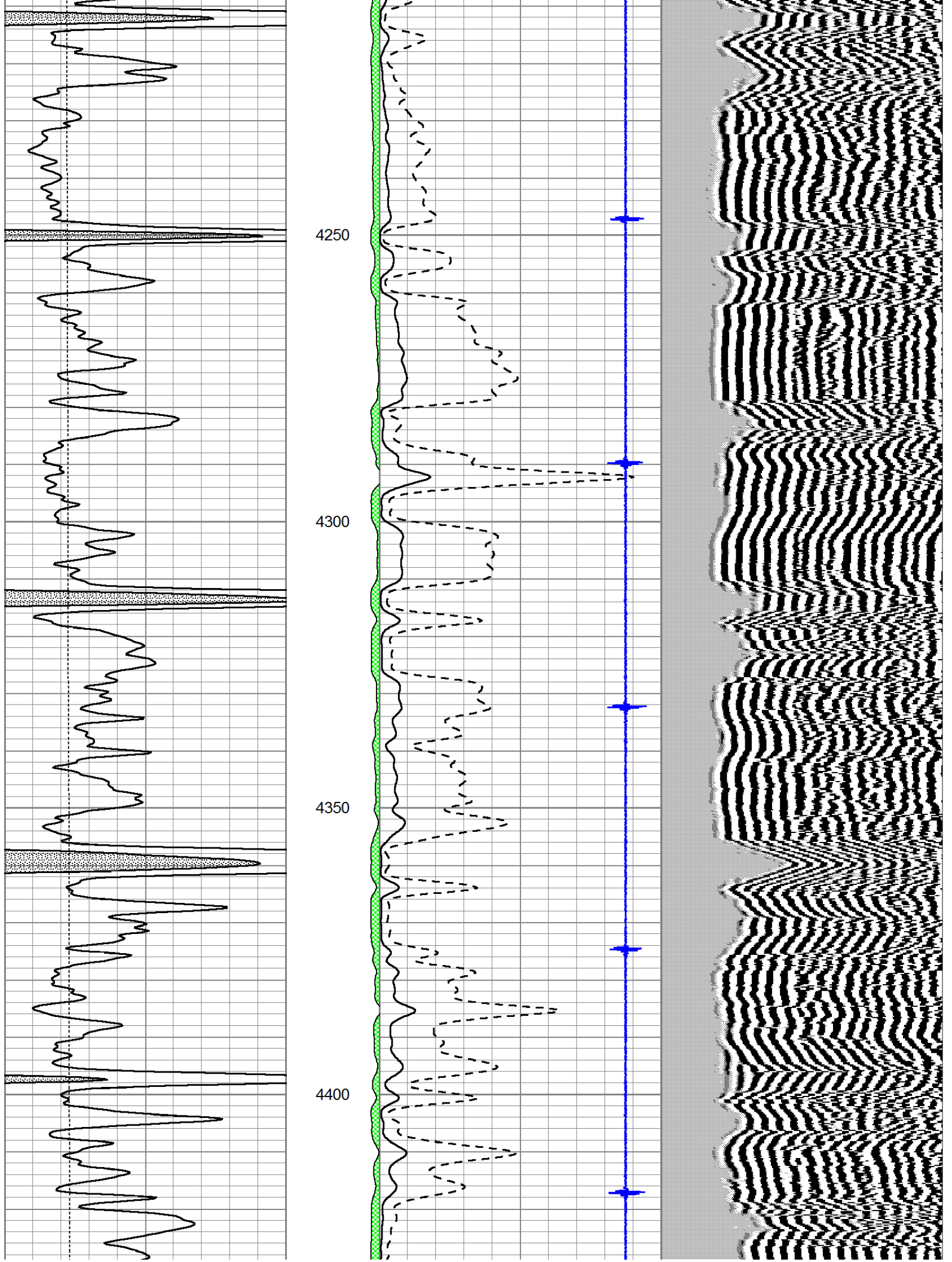
Database File: shake\_janzen1-34\_cbl.db  
 Dataset Pathname: sgrcbl/pass4.1  
 Presentation Format: cbl dig  
 Dataset Creation: Mon Aug 12 14:12:21 2013  
 Charted by: Depth in Feet scaled 1:240

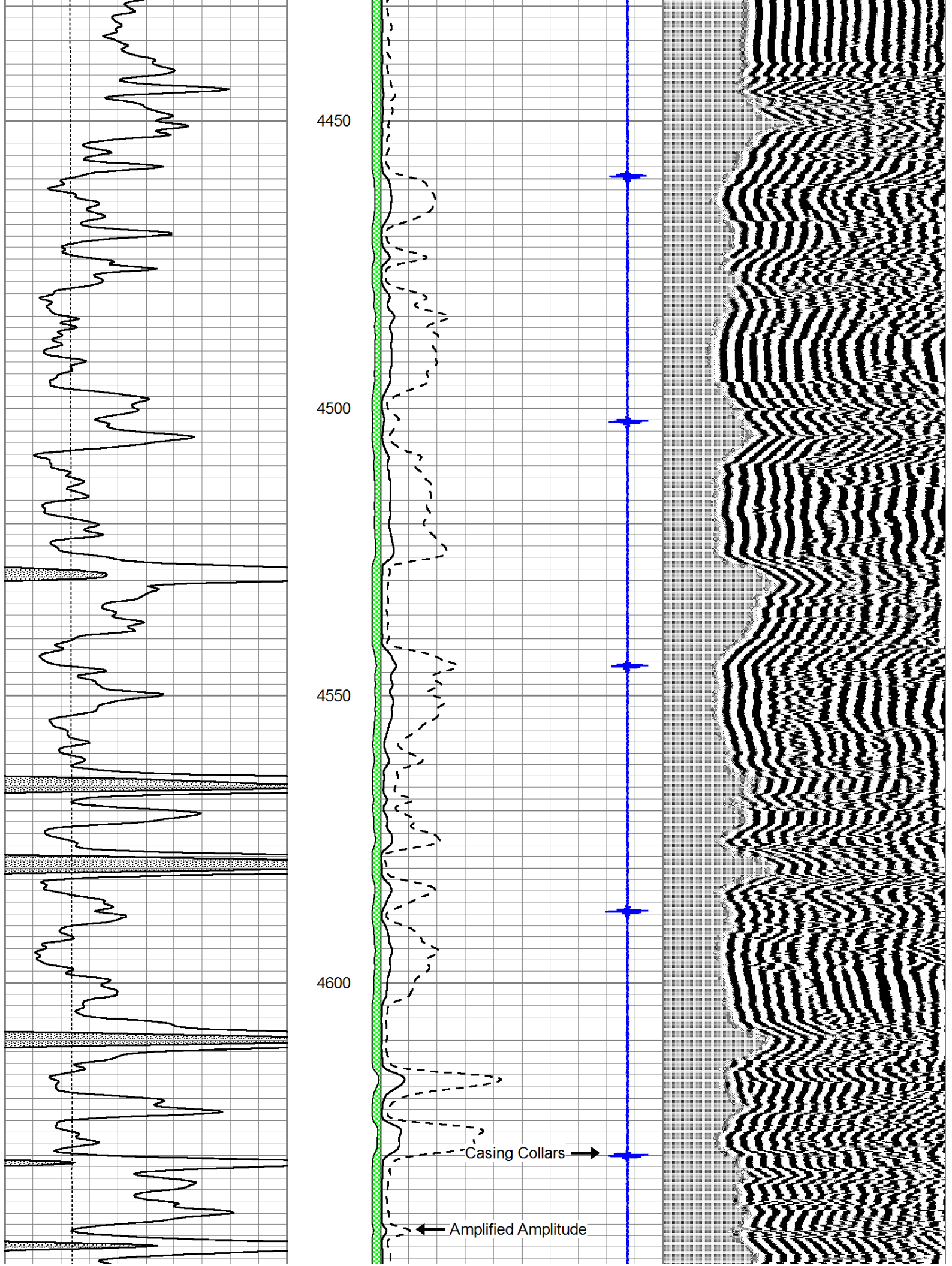
0	GR (GAPI)	150	AMP3	0	Amplitude (mV)	100	200	Variable Density	1200
0	LTEN (lb)	5000	(mV)	0	Amplified Amplitude (mV)	20			
			-100 10	7	Collar Locator	-1			

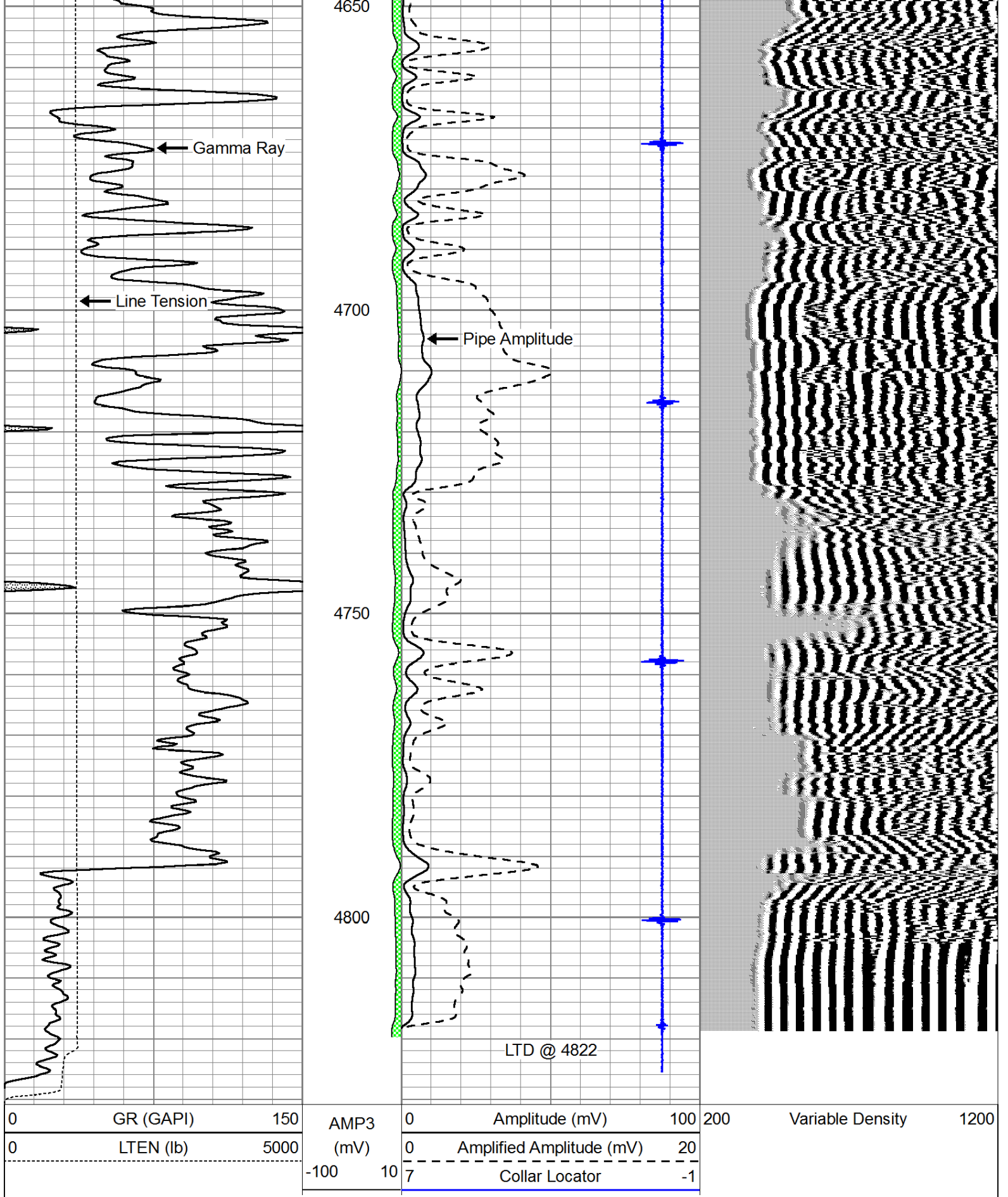










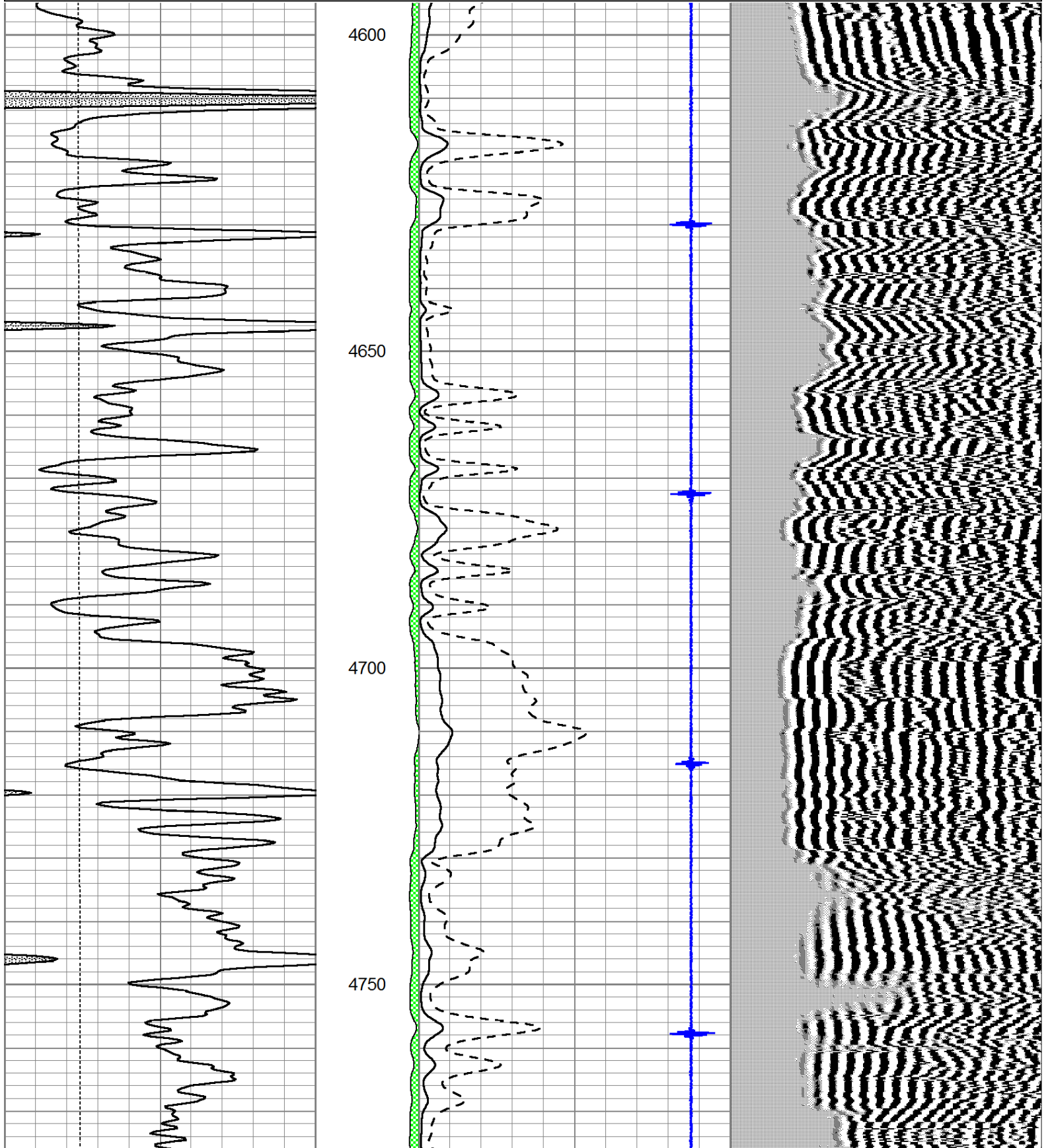


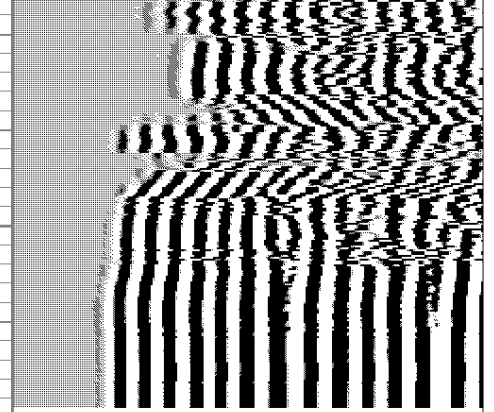
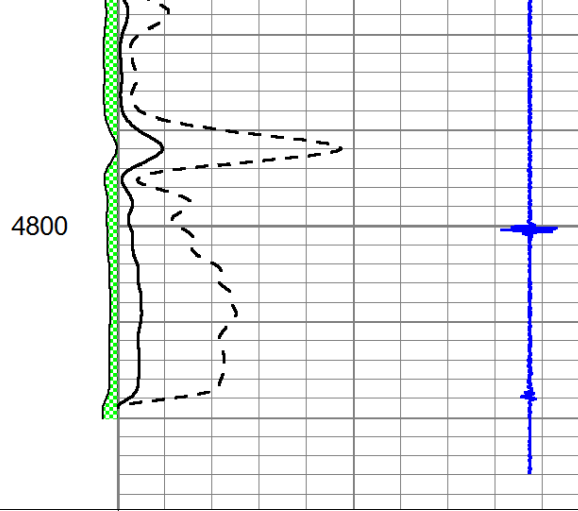
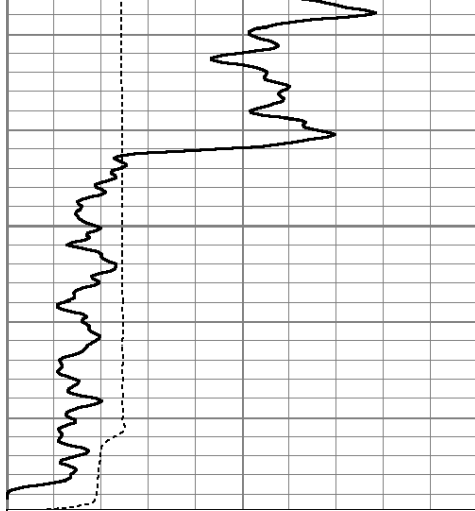
# Repeat Section



Pioneer Energy Services  
 Database File: shake\_janzen1-34\_cbl.db  
 Dataset Pathname: sgrcbl/pass3  
 Presentation Format: cldig  
 Dataset Creation: Mon Aug 12 13:42:33 2013 by Log SCH 111116  
 Charted by: Depth in Feet scaled 1:240

0	GR (GAPI)	150	AMP3	0	Amplitude (mV)	100	200	Variable Density	1200
0	LTEN (lb)	5000	(mV)	0	Amplified Amplitude (mV)	20			
			-100	10	7	Collar Locator	-1		





0	GR (GAPI)	150
0	LTEN (lb)	5000

AMP3	0	Amplitude (mV)	100
(mV)	0	Amplified Amplitude (mV)	20
-100	10	Collar Locator	-1

200	Variable Density	1200
-----	------------------	------