



**MIDWEST SURVEYS**  
 LOGGING - PERFORATING - CONSULTING SERVICES  
 P.O. Box 68, Osawatomie, KS 66064  
 913 / 755 - 2128

**GAMMA RAY / NEUTRON / CCL**

File No. \_\_\_\_\_

Company **Enerjex Kansas, Inc.**

Well **Alexander No. BSI-AL-21**

Field **Paola / Rantoul**

County **Franklin** State **Kansas**

Location **839 FSL & 3924' FEL  
 SW-NW-SE-SW**

Other Services  
**Perforate**

Sec. 29 Twp. 18S Rge. 21E Elevation  
 Permanent Datum **GL** KB NA  
 Log Measured From **GL** DF NA  
 Drilling Measured From **GL** GL NA

Date **08-04-2013**

Run Number **One**

Depth Drier **820.0**

Depth Logger **722.8**

Bottom Logged Interval **721.8**

Top Log Interval **20.0**

Fluid Level **Full**

Type Fluid **Water**

Density / Viscosity **NA**

Salinity - PPM Cl **NA**

Max Recorded Temp **NA**

Estimated Cement Top **0.0**

Equipment No. **102** Location **Osawatomie**

Recorded By **Gary Windsch**

Witnessed By **Jay Schindler**

**BORE-HOLE RECORD**

RUN No. BIT FROM TO SIZE WGT. FROM TO

One 9.875" 0.0 20.0 7.00" 17.0# 0.0 20.0

Two 5.625" 20.0 820.0 2.875" 6.5# 0.0 726.0

**CASING RECORD**

RUN No. BIT FROM TO SIZE WGT. FROM TO

One 9.875" 0.0 20.0 7.00" 17.0# 0.0 20.0

Two 5.625" 20.0 820.0 2.875" 6.5# 0.0 726.0

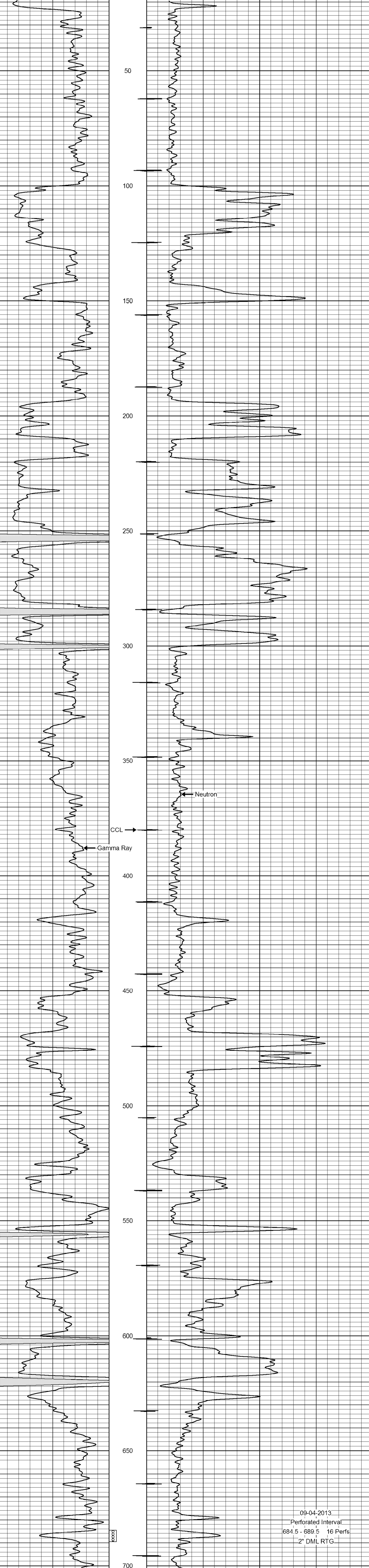
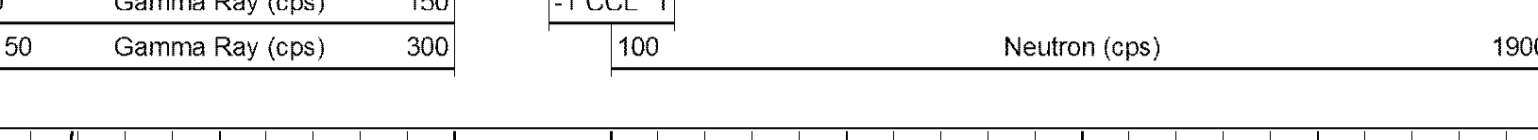
<<< Fold Here >>>

All interpretations are opinions based on inferences from electrical or other measurements and we cannot and do not guarantee the accuracy or correctness of any interpretation, and we shall not, except in the case of gross or willful negligence on our part, be liable or responsible for any loss, costs, damages, or expenses incurred or sustained by anyone resulting from any interpretation made by any of our officers, agents or employees. These interpretations are also subject to our general terms and conditions set out in our current Price Schedule.

Comments

Drilling Contractor :  
 JTC Oil, Inc.

Database File: alexander21ia.db  
 Dataset Pathname: pass1  
 Presentation Format: gr-n-ccl  
 Dataset Creation: Wed Sep 04 12:53:46 2013 by Log SCH 111116  
 Charted by: Depth in Feet scaled 1:240



09-04-2013  
 Perforated Interval  
 684.5 - 689.5 16 Perfs  
 2" DML RTG

