



Pioneer Energy Services

# Microresistivity Log

15-023-21,360-00-00

API No.

Company **Berexco, LLC**

Well **Vada "B" No. 1-17**

Field

County **Cheyenne** State

**Kansas**

Location

**1,980' FSL & 1,980' FWL**

Other Services  
**RAG**

Sec: **17**

Twp: **1S**

Rge: **37W**

Elevation

**K.B. 3216**  
**D.F. 3205**  
**G.L. 3205**

Permanent Datum **Ground Level**

Log Measured From **Kelly Bushing**

**11 Ft. Above Perm. Datum**

Drilling Measured From **Kelly Bushing**

Date **3/23/2013**

Run Number **Two**

Depth Driller **4750**

Depth Logger **4745**

Bottom Logged Interval **4744**

Top Log Interval **3500**

Casing Driller **8.625 @ 307**

Casing Logger **307**

Bit Size **7.875**

Type Fluid in Hole **Chemical**

Salinity, ppm CL **2800**

Density / Viscosity **9.1 46**

pH / Fluid Loss **10.0 7.2**

Source of Sample **Flowline**

Rm @ Meas. Temp **1.30 @ 54**

Rmf @ Meas. Temp **.98 @ 54**

Rmc @ Meas. Temp **1.76 @ 54**

Source of Rmf / Rmc **Charts**

Rm @ BHT **.57 @ 124**

Operating Rig Time **4 Hours**

Max Rec. Temp. F **124**

Equipment Number **108**

Location **Hays**

Recorded By **J. Long**

Witnessed By **Bryan Bynog**

<<< Fold Here >>>

All interpretations are opinions based on inferences from electrical or other measurements and we cannot and do not guarantee the accuracy or correctness of any interpretation, and we shall not, except in the case of gross or willful negligence on our part, be liable or responsible for any loss, costs, damages, or expenses incurred or sustained by anyone resulting from any interpretation made by any of our officers, agents or employees. These interpretations are also subject to our general terms and conditions set out in our current Price Schedule.

### Comments

Thank you for using Pioneer Energy Services  
[www.pioneerres.com](http://www.pioneerres.com)  
 785 625 3858

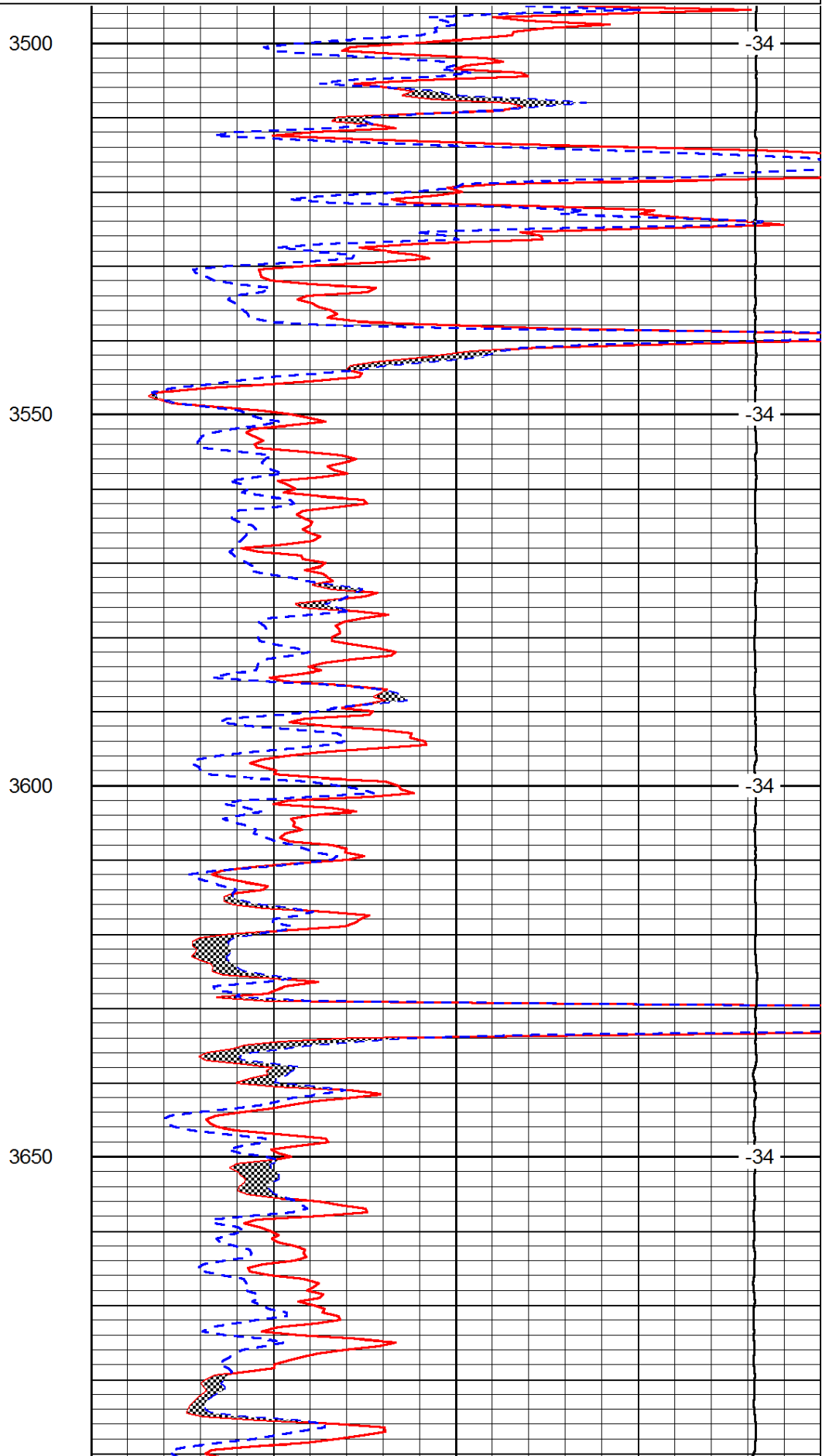
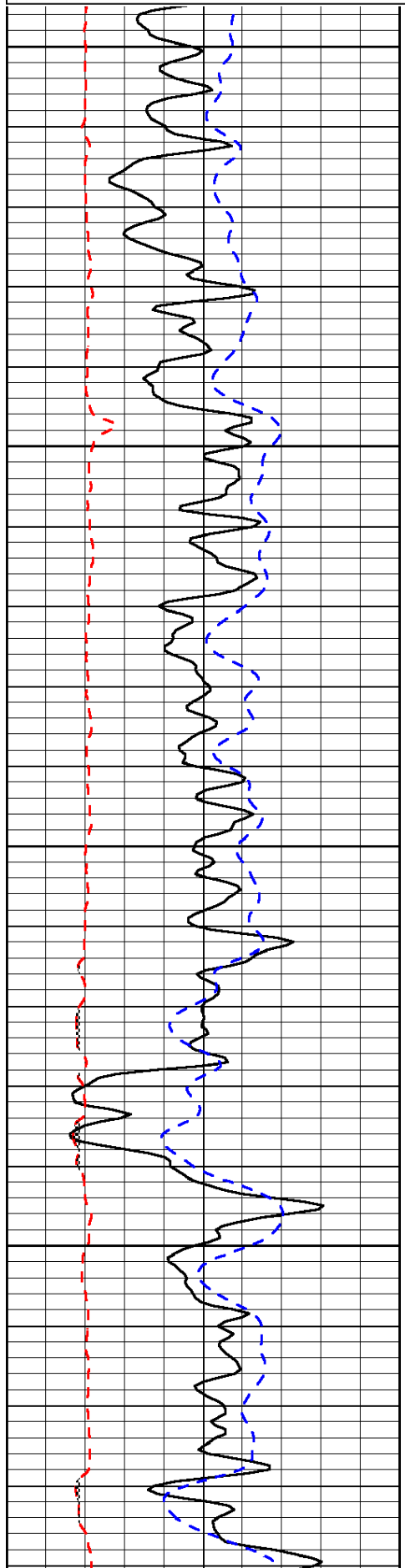
Bird City, 17 North to EE Road, (State Line), 2 East, 2 1/2 South, East Into

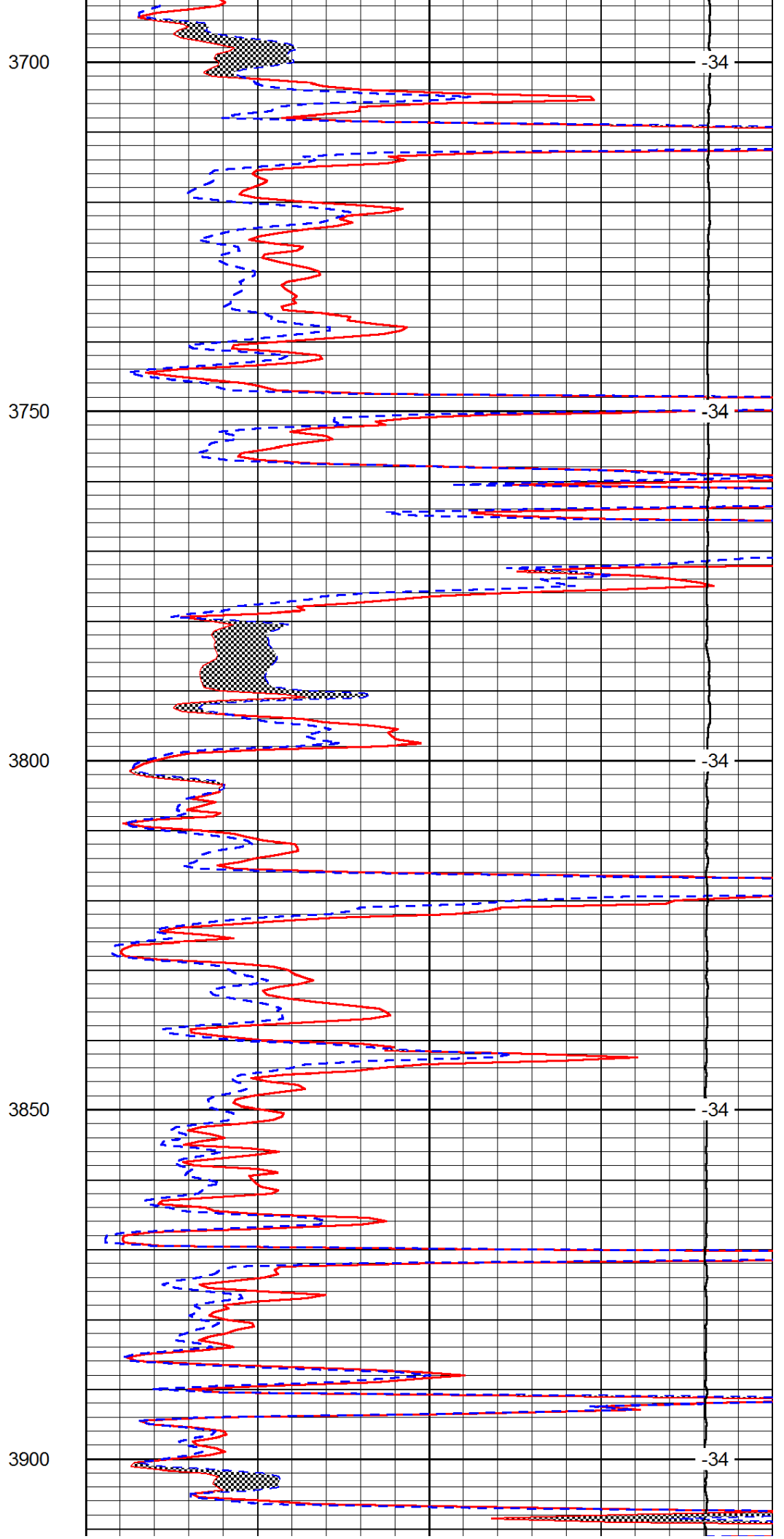
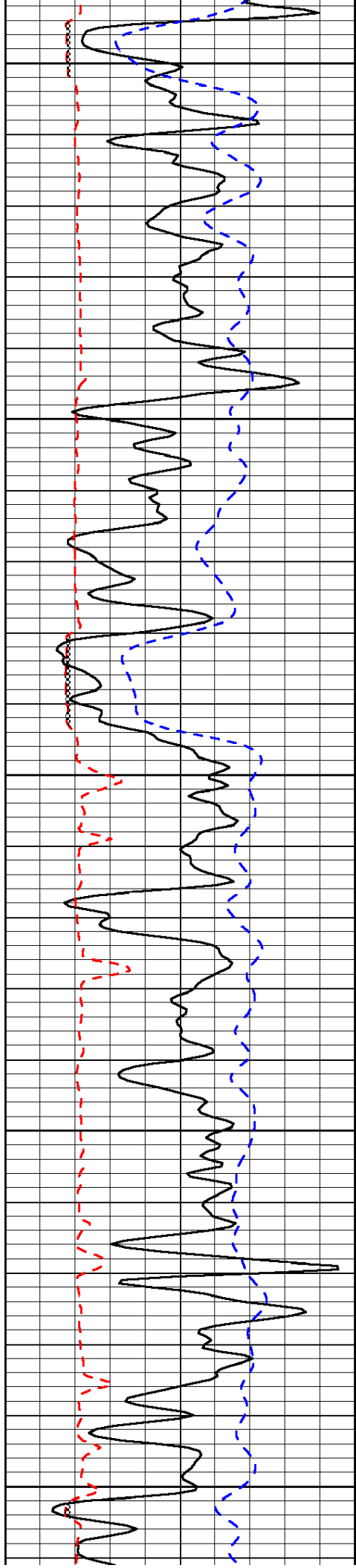
Database File: c:\warrior\data\berexco\_vada b #1-17\berexco\_vada\_b\_1-17hd2.db  
 Dataset Pathname: rag/berrag  
 Presentation Format: micro  
 Dataset Creation: Sat Mar 23 07:04:19 2013  
 Charted by: Depth in Feet scaled 1:240

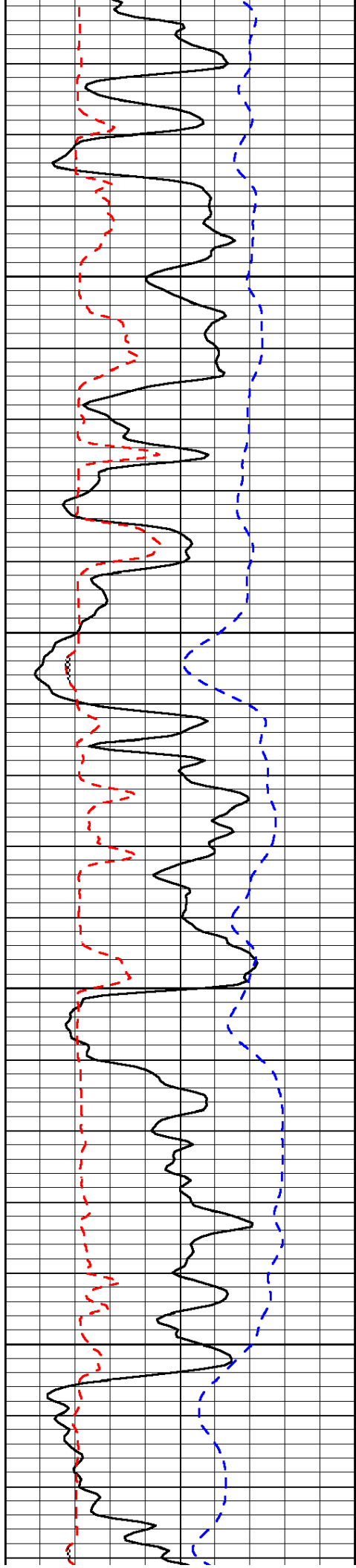
0	Gamma Ray	150
6	Micro Log Caliper (GAPI)	16
-200	SP (mV)	0

0	Micro Inverse 1 X 1	40
0	Micro Normal 2"	40
15000	Line Weight	0

LSPD





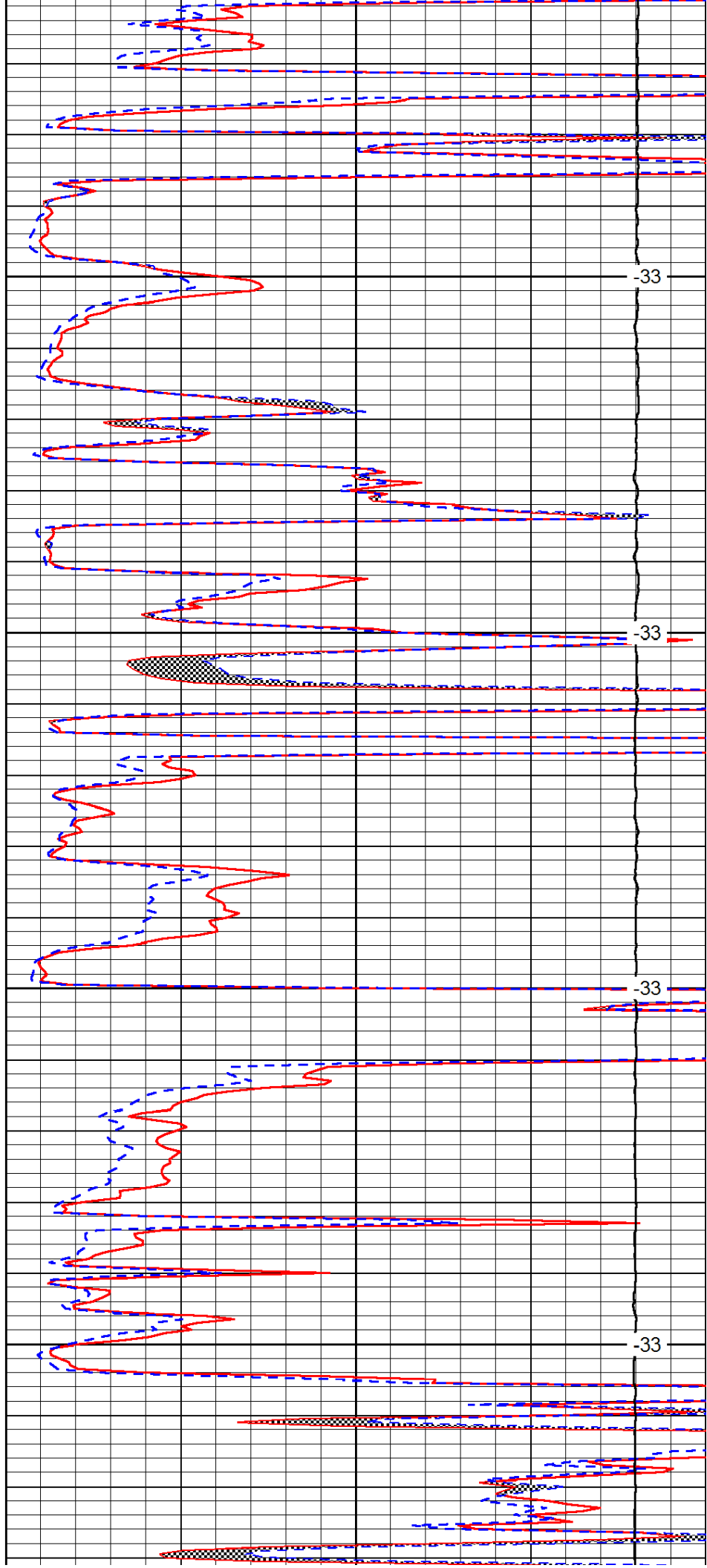


3950

4000

4050

4100

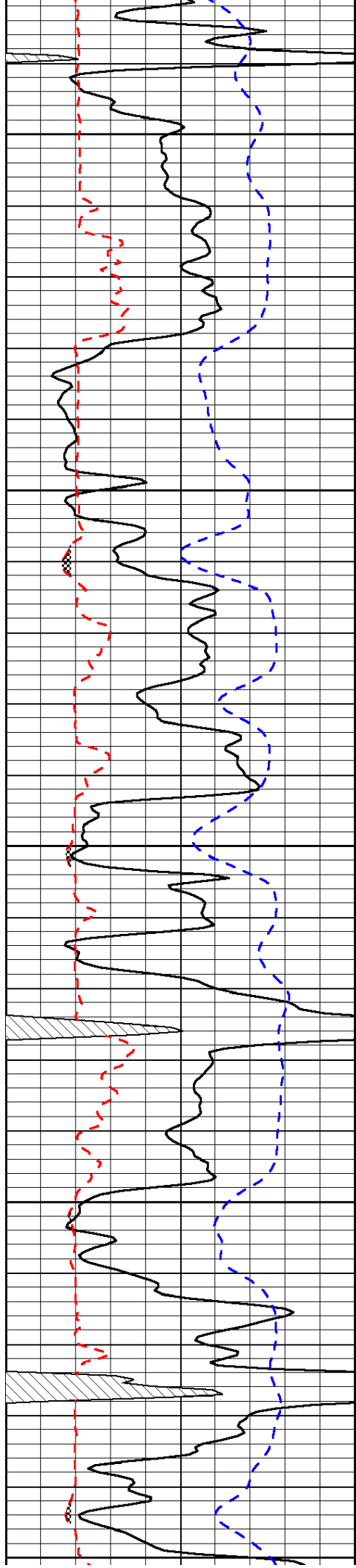


-33

-33

-33

-33



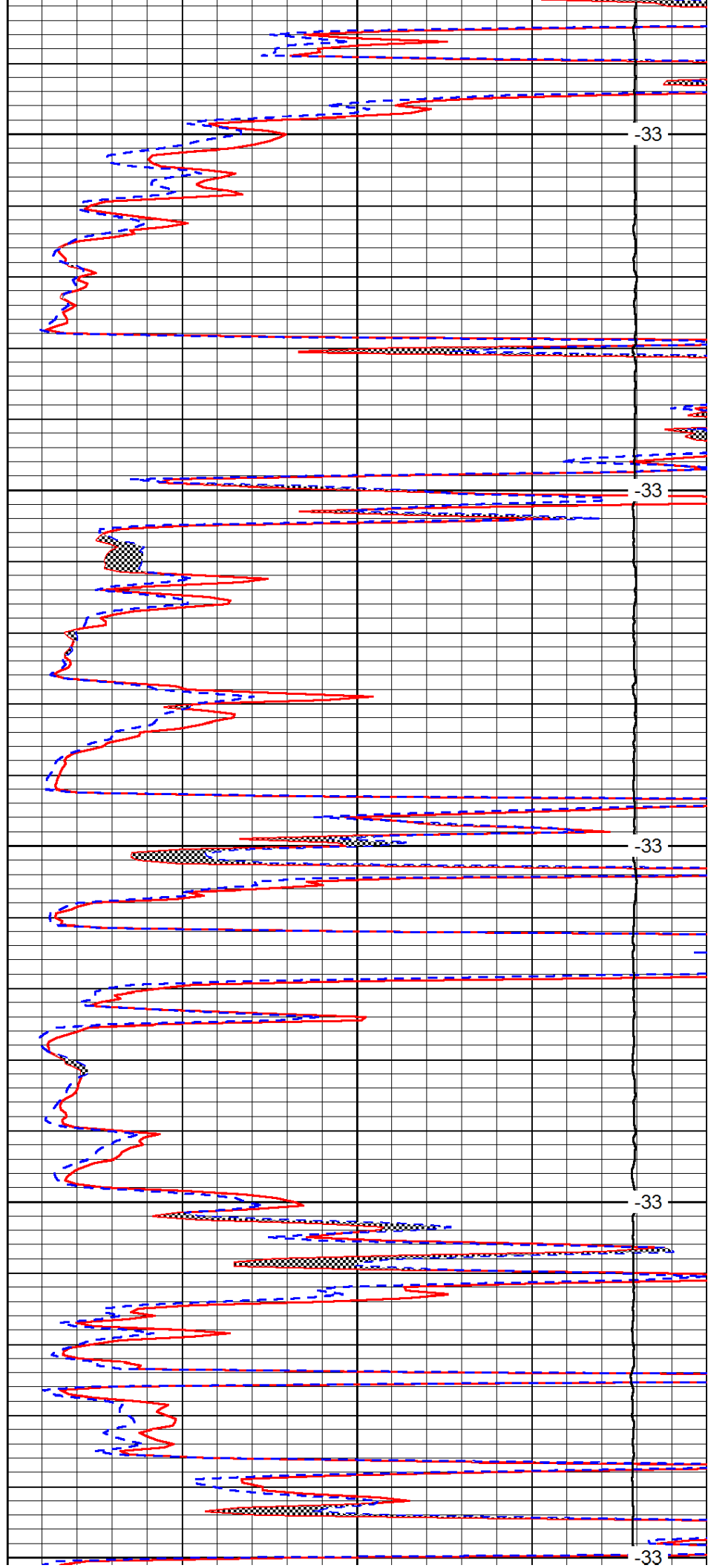
4150

4200

4250

4300

4350



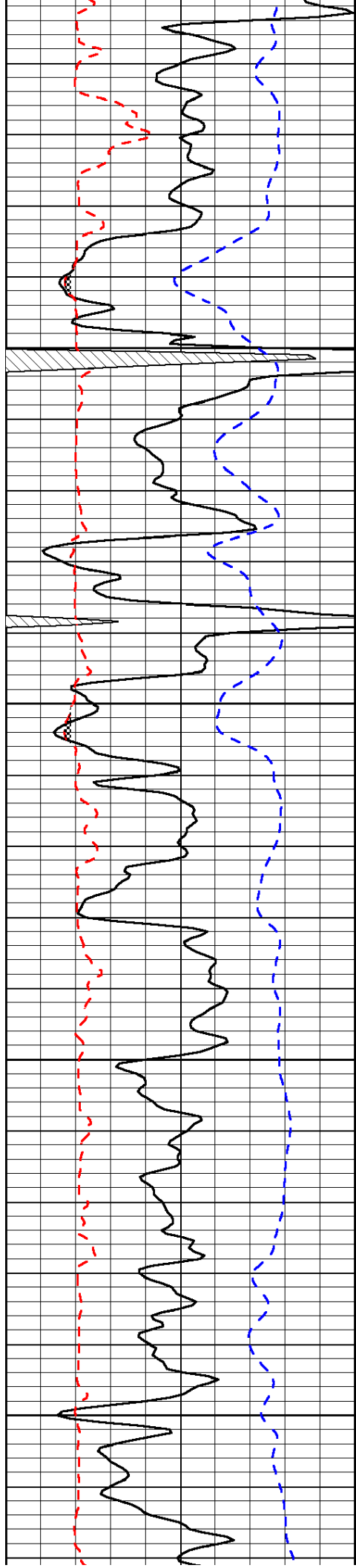
-33

-33

-33

-33

-33

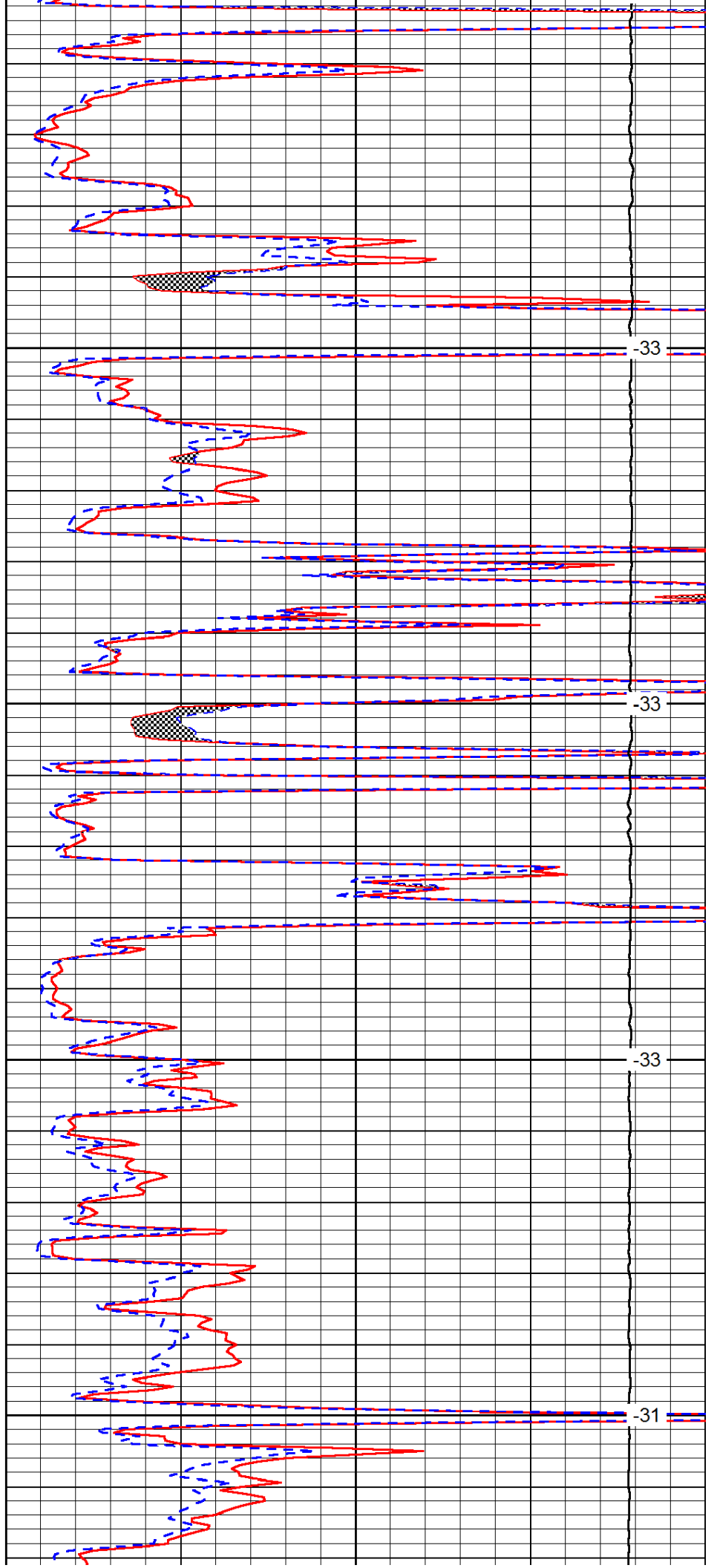


4400

4450

4500

4550

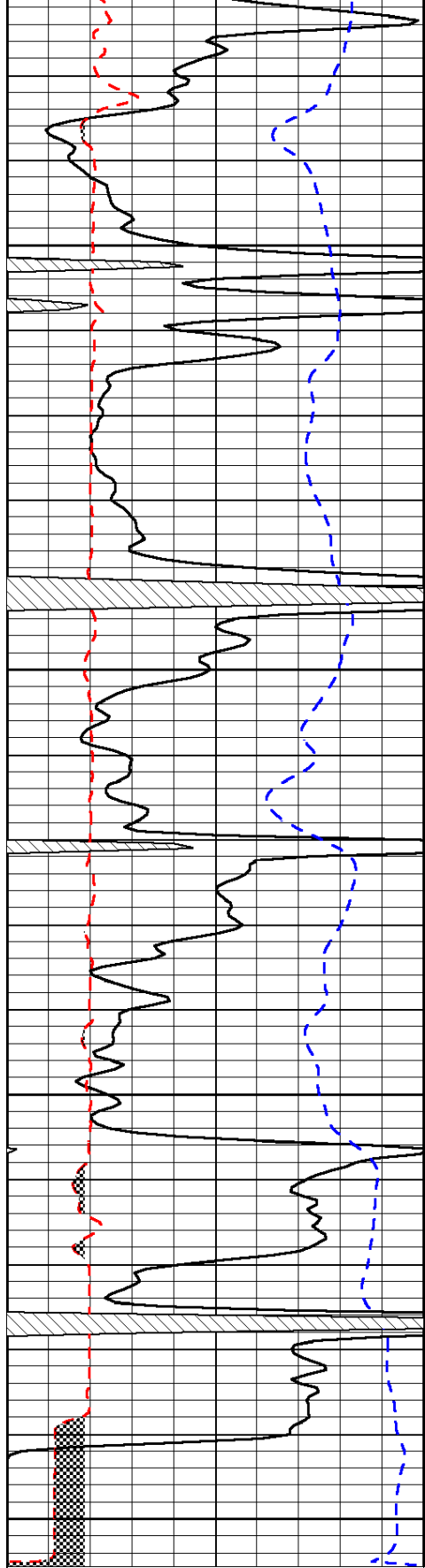


-33

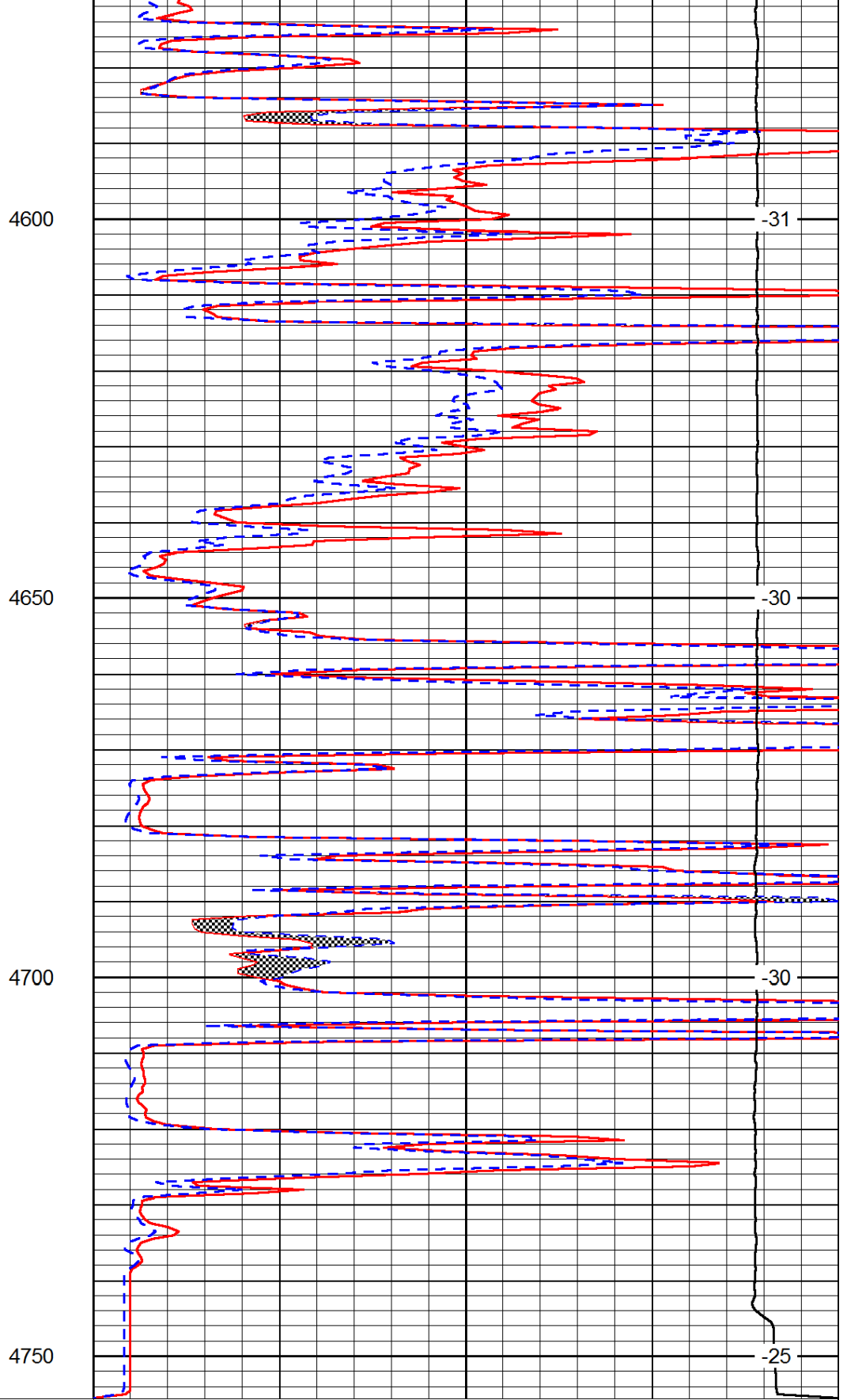
-33

-33

-31



0	Gamma Ray	150
6	Micro Log Caliper (GAPI)	16
-200	SP (mV)	0



0	Micro Inverse 1 X 1	40
0	Micro Normal 2''	40
15000	Line Weight	0

LSPD