



Pioneer Energy Services

Radiation Guard Log

15-023-21,360-00-00

API No.

Company **Berexco, LLC**

Well **Vada "B" No. 1-17**

Field

County **Cheyenne** State

Kansas

Location **1,980' FSL & 1,980' FWL**

Other Services
MEL

Sec: **17** Twp: **1S** Rge: **37W**

Permanent Datum **Ground Level** Elevation **3205**

Log Measured From **Kelly Bushing** 11 Ft. Above Perm. Datum

Elevation
K.B. 3216
D.F. 3205
G.L. 3205

Date **3/23/2013**

Run Number **One**

Depth Driller **4750**

Depth Logger **4745**

Bottom Logged Interval **4744**

Top Log Interval **300**

Casing Driller **8.625 @ 307**

Casing Logger **307**

Bit Size **7.875**

Type Fluid in Hole **Chemical**

Salinity,ppm CL **2800**

Density / Viscosity **9.1 46**

pH / Fluid Loss **10.0 7.2**

Source of Sample **Flowline**

Rm @ Meas. Temp **1.30 @ 54**

Rmf @ Meas. Temp **.98 @ 54**

Rmc @ Meas. Temp **1.76 @ 54**

Source of Rmf / Rmc **Charts**

Rm @ BHT **.57 @ 124**

Operating Rig Time **4 Hours**

Max Rec. Temp. F **124**

Equipment Number **108**

Location **Hays**

Recorded By **J. Long**

Witnessed By **Bryan Bynog**

<<< Fold Here >>>

All interpretations are opinions based on inferences from electrical or other measurements and we cannot and do not guarantee the accuracy or correctness of any interpretation, and we shall not, except in the case of gross or willful negligence on our part, be liable or responsible for any loss, costs, damages, or expenses incurred or sustained by anyone resulting from any interpretation made by any of our officers, agents or employees. These interpretations are also subject to our general terms and conditions set out in our current Price Schedule.

Comments

Thank you for using Pioneer Energy Services
www.pioneerres.com
785 625 3858

Bird City, 17 North to EE Road, (State Line), 2 East, 2 1/2 South, East Into

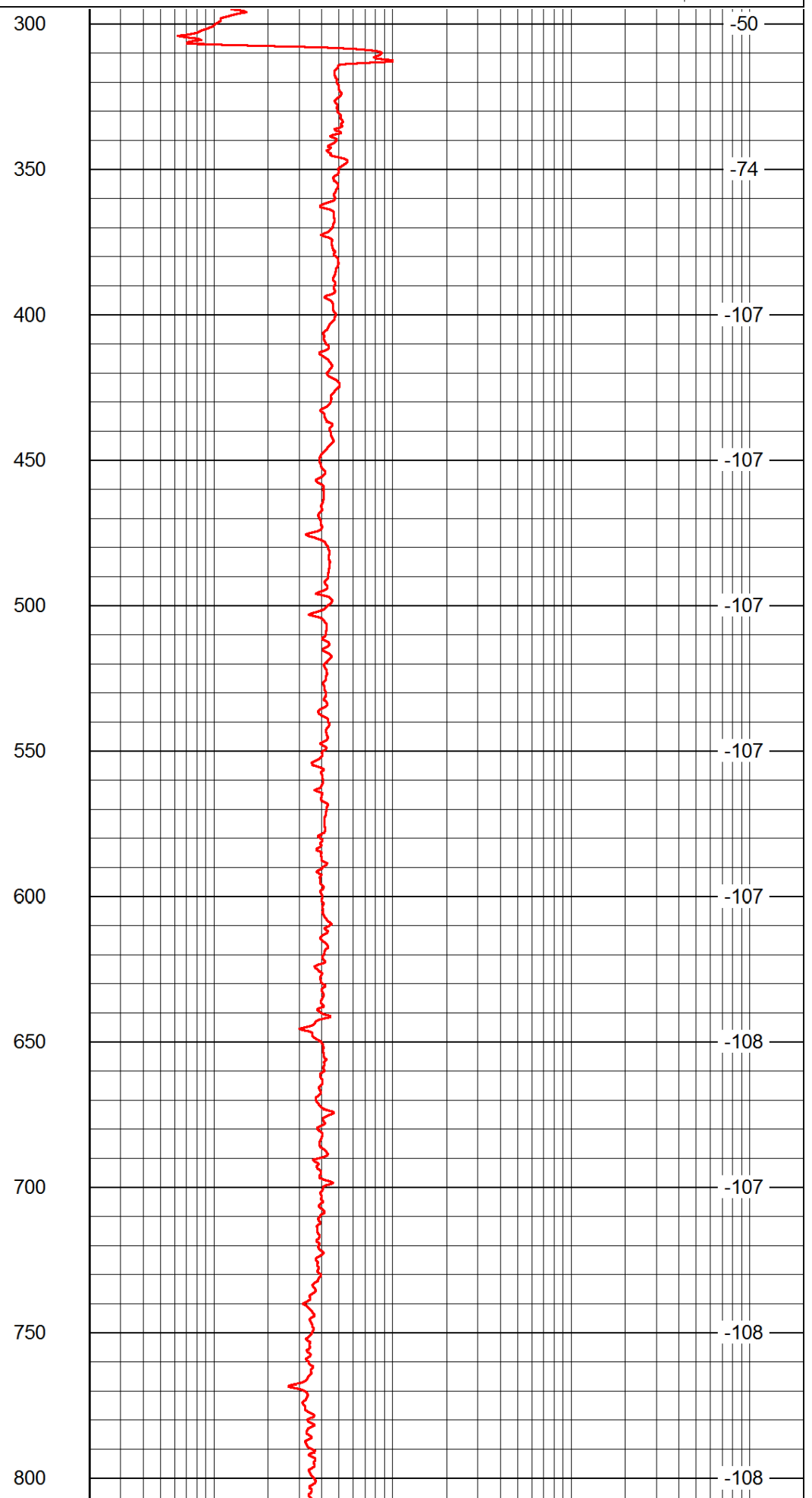
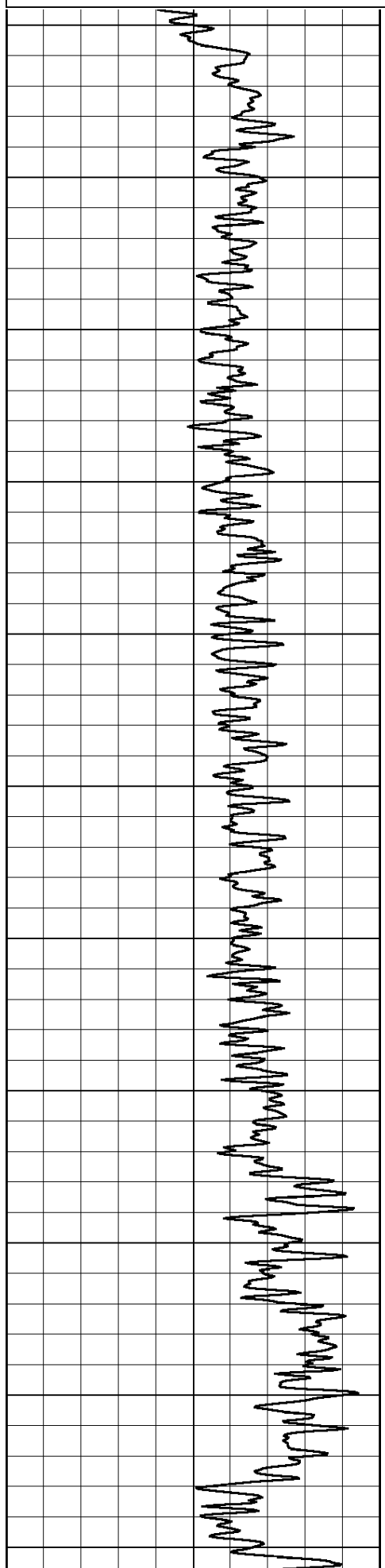
Database File: c:\warrior\data\berexco_vada b #1-17\berexco_vada_b_1-17hd2.db
 Dataset Pathname: rag/berrag
 Presentation Format: rag2in
 Dataset Creation: Sat Mar 23 07:04:19 2013
 Charted by: Depth in Feet scaled 1:600

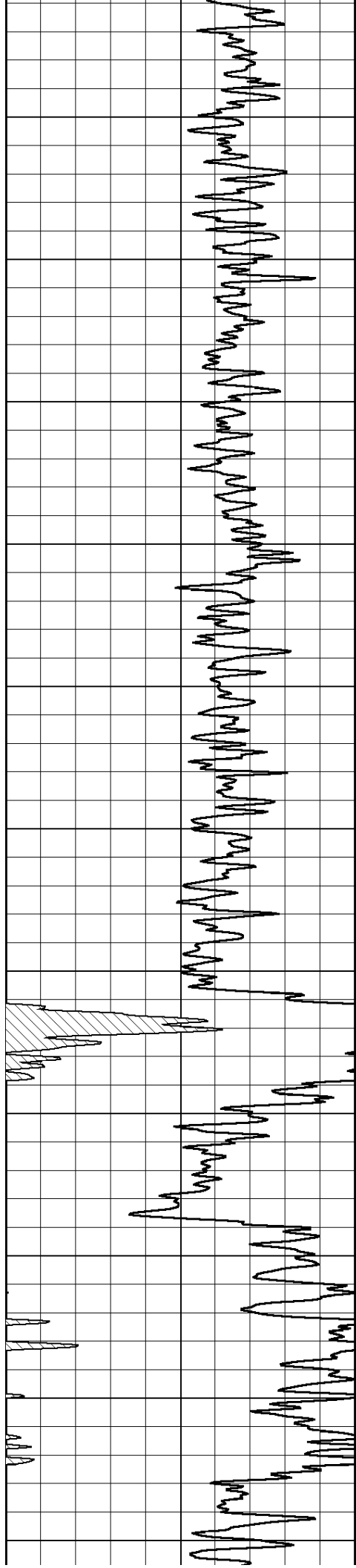
0 Gamma Ray 150

0.2 lgrd

2000

LSPD





850

900

950

1000

1050

1100

1150

1200

1250

1300

1350

-108

-108

-107

-108

-105

-105

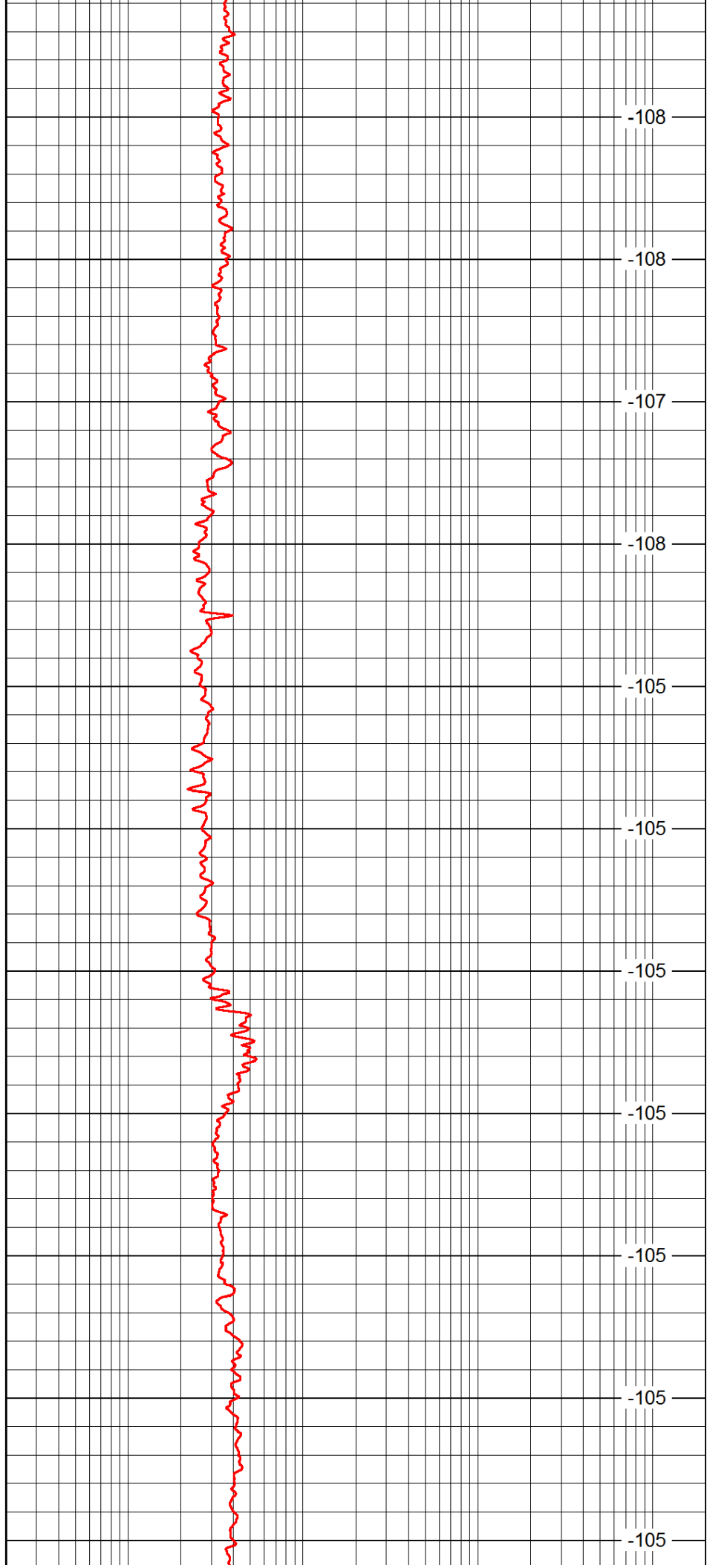
-105

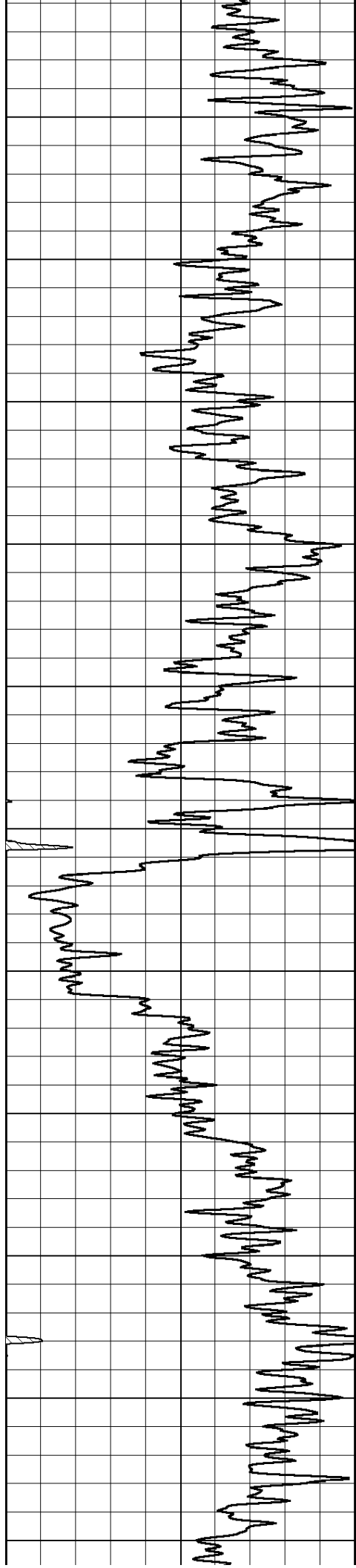
-105

-105

-105

-105





1400

1450

1500

1550

1600

1650

1700

1750

1800

1850

1900

-105

-105

-105

-105

-105

-105

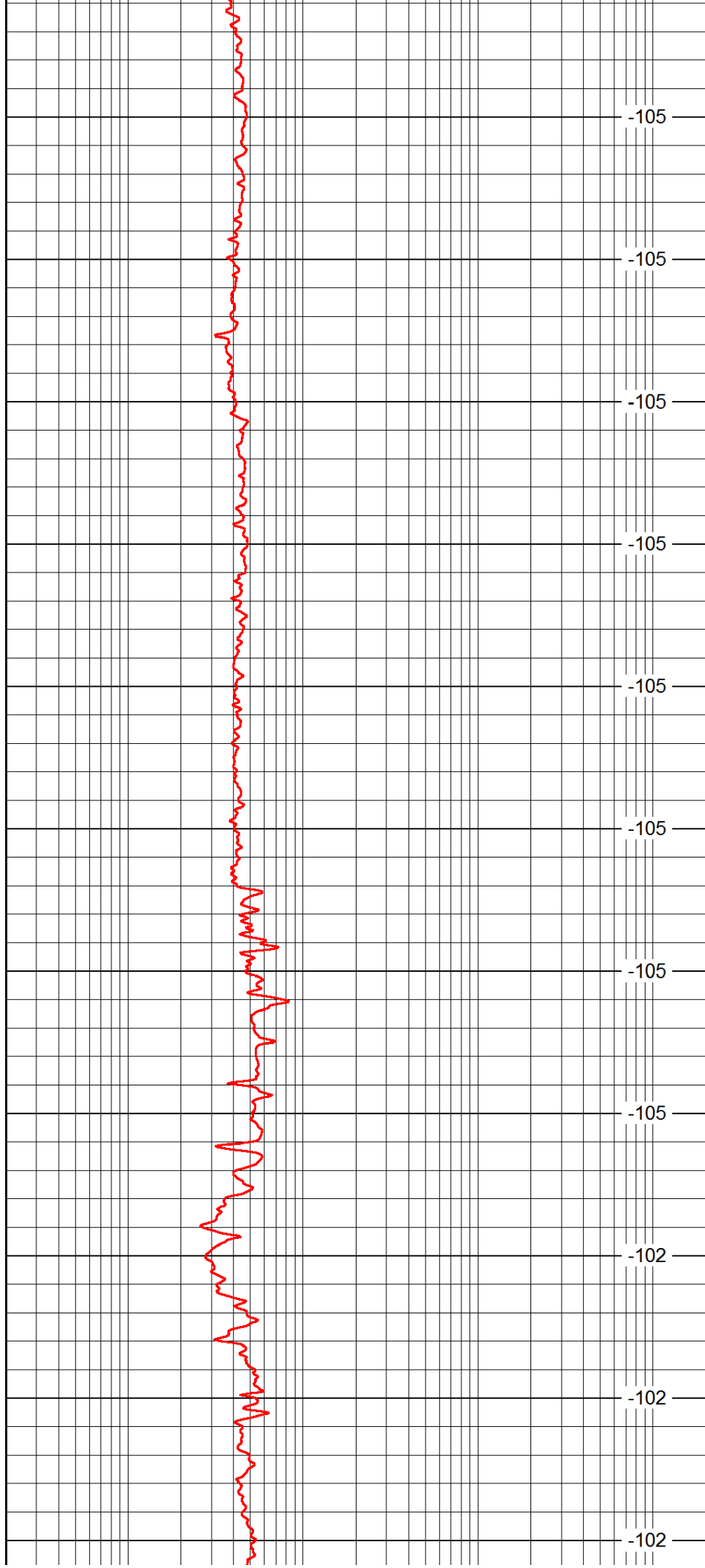
-105

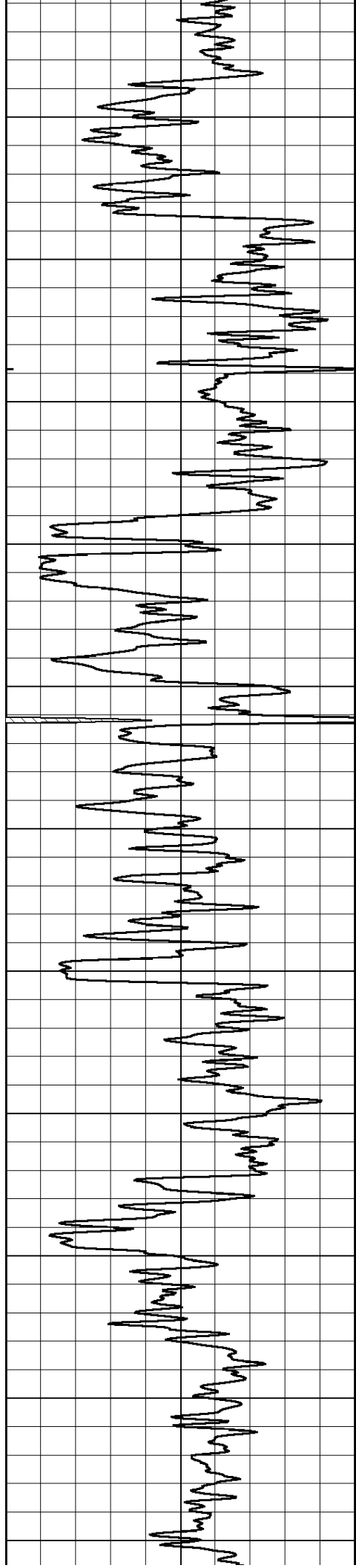
-105

-102

-102

-102





1950

2000

2050

2100

2150

2200

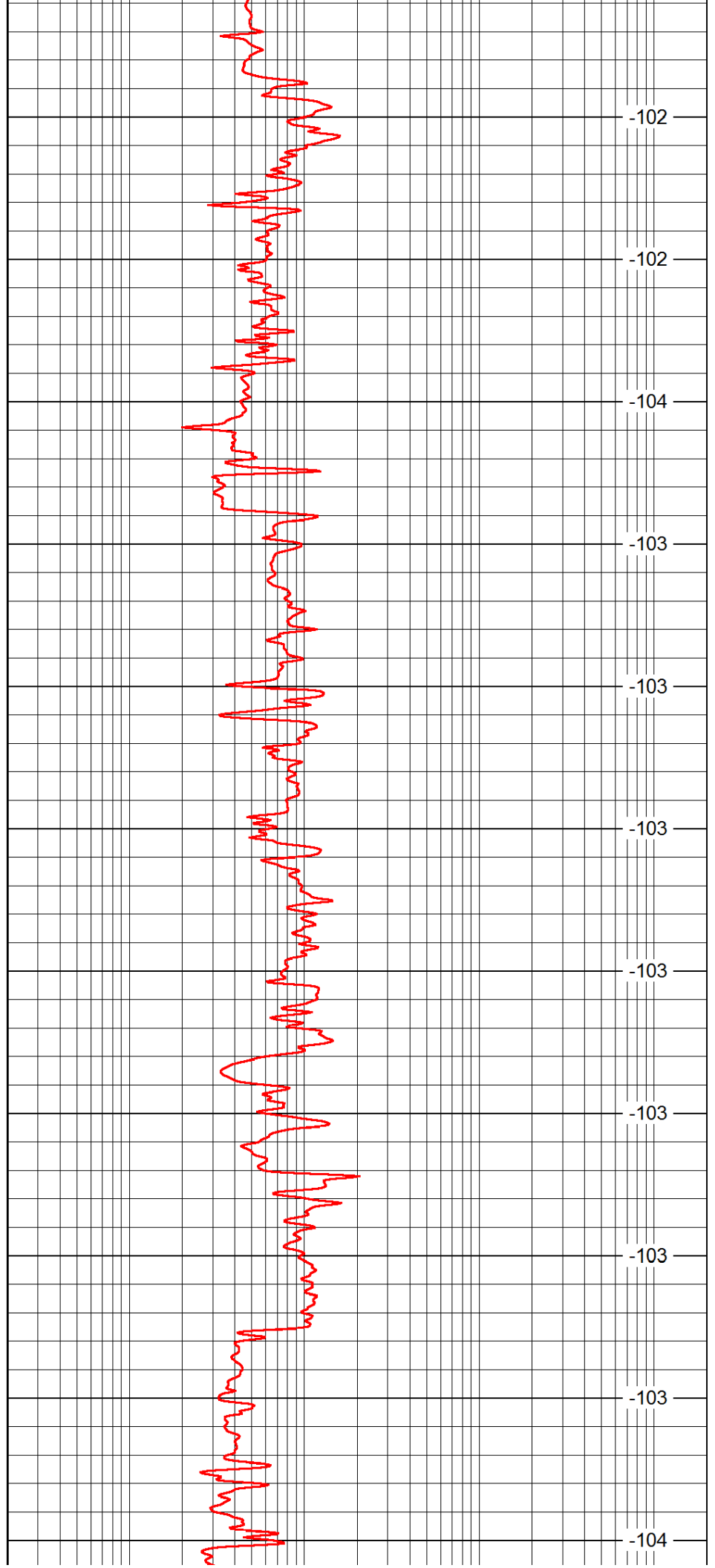
2250

2300

2350

2400

2450



-102

-102

-104

-103

-103

-103

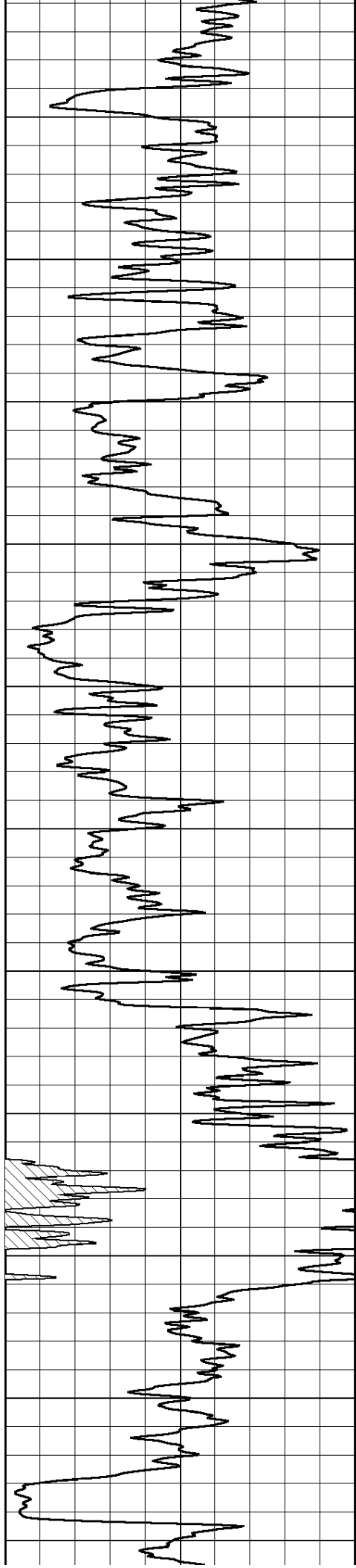
-103

-103

-103

-103

-104



2500

2550

2600

2650

2700

2750

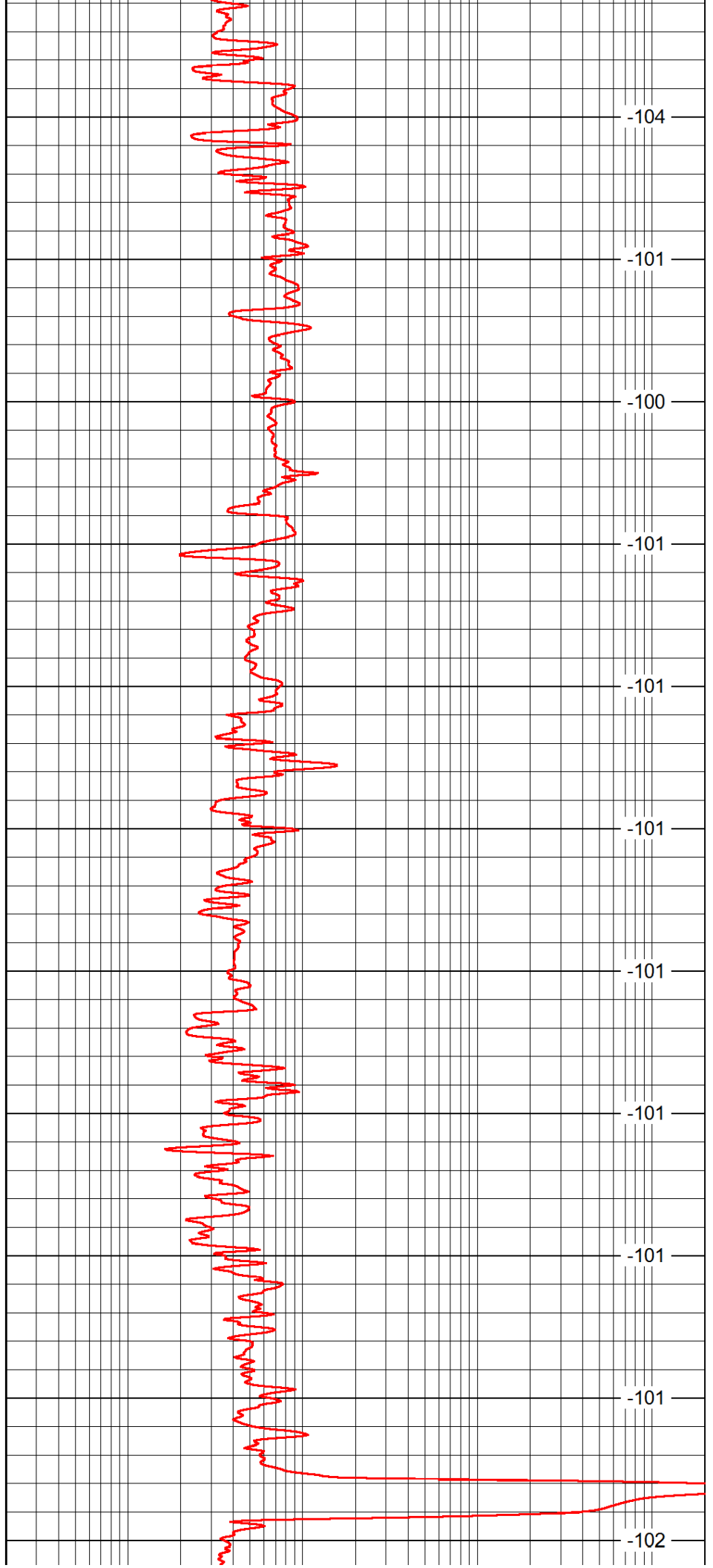
2800

2850

2900

2950

3000



-104

-101

-100

-101

-101

-101

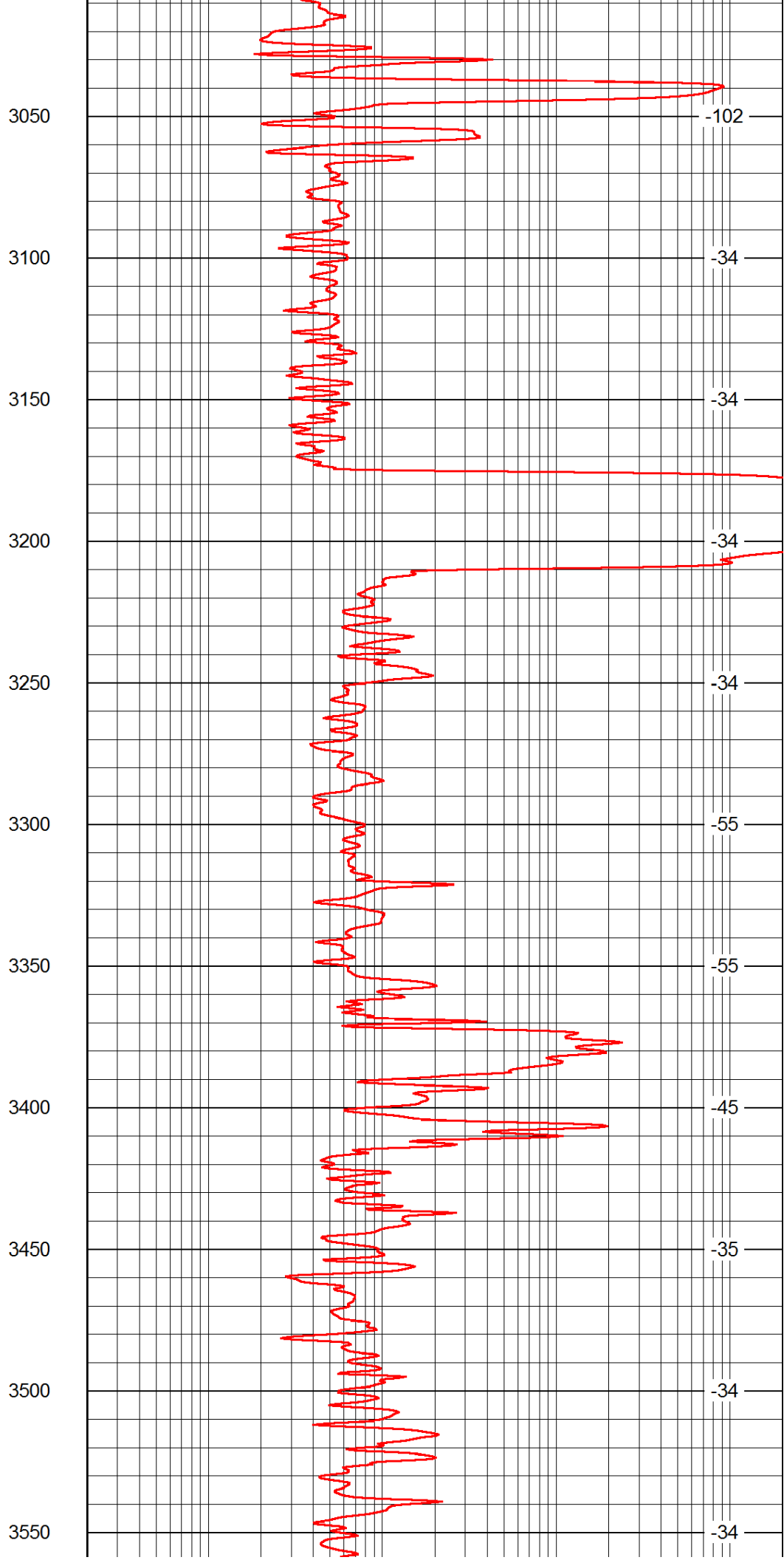
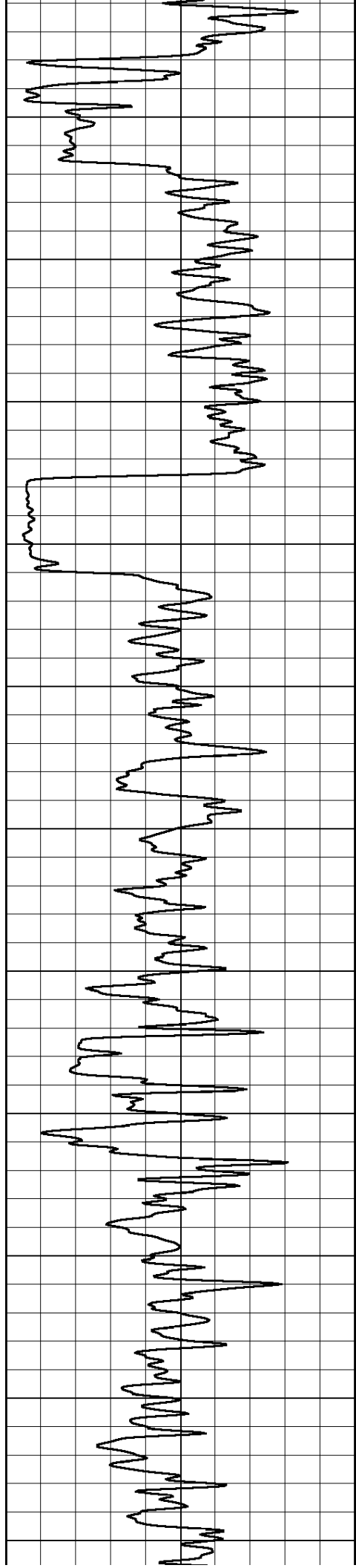
-101

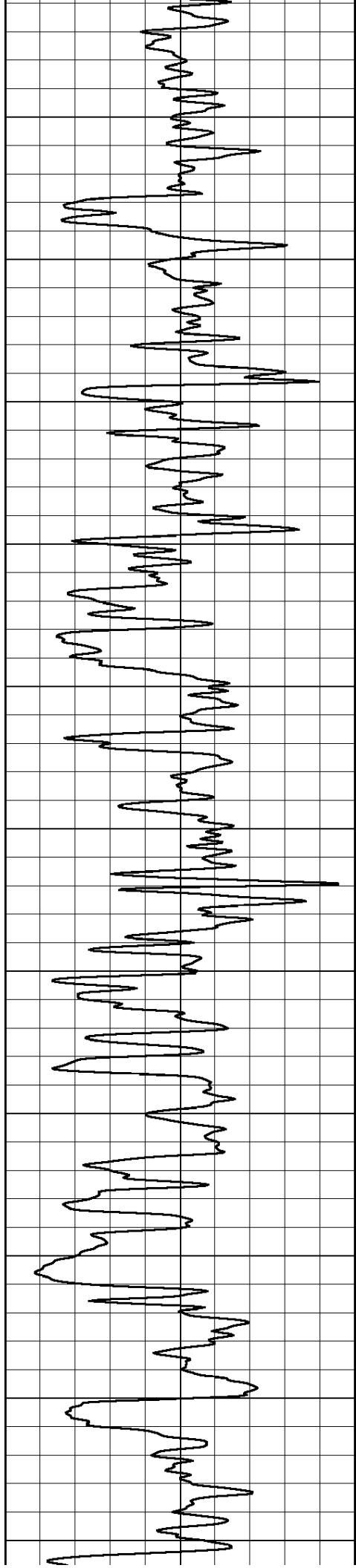
-101

-101

-101

-102





3600

3650

3700

3750

3800

3850

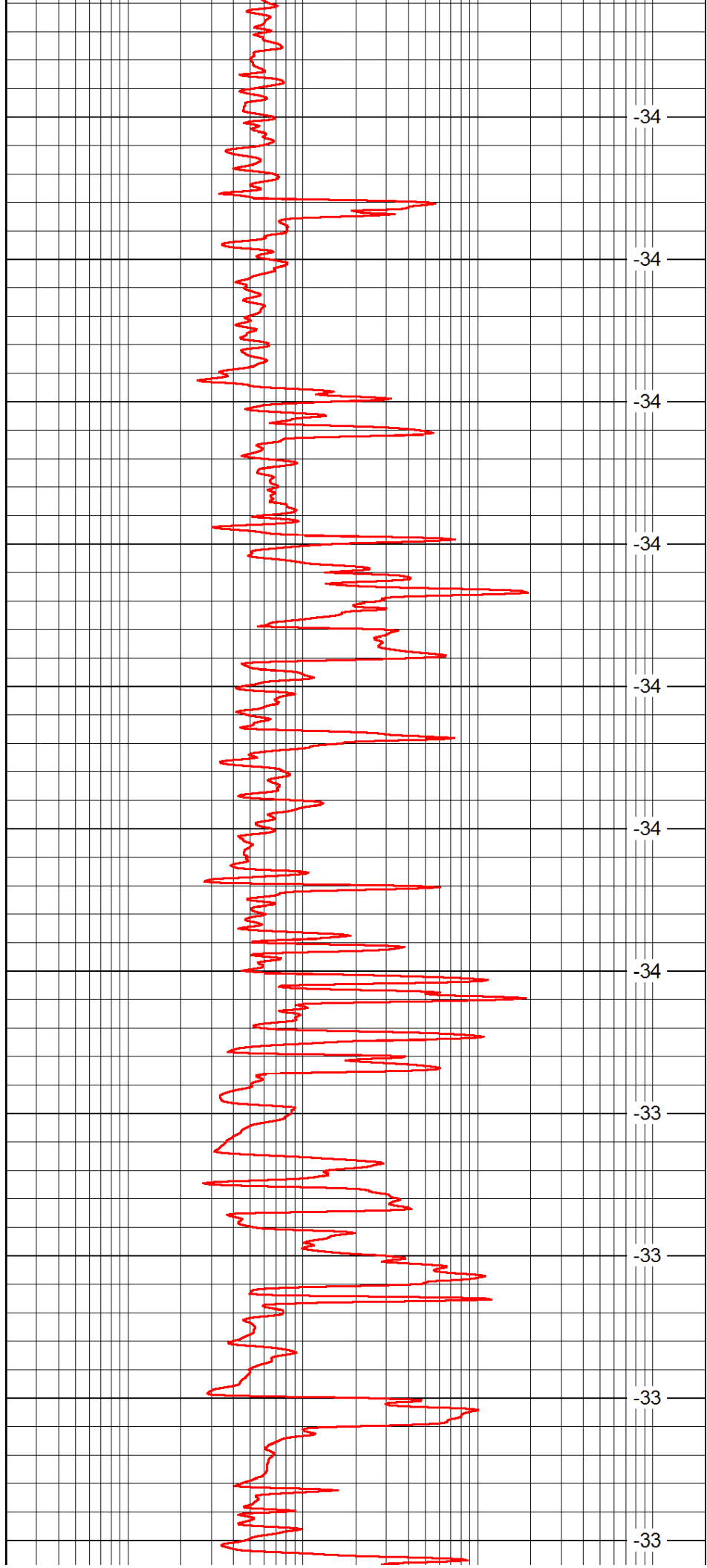
3900

3950

4000

4050

4100



-34

-34

-34

-34

-34

-34

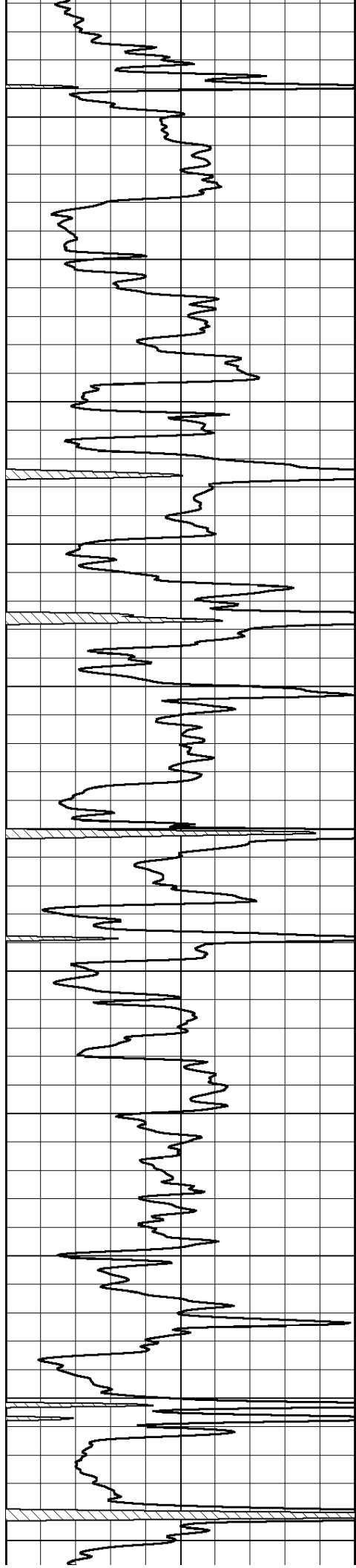
-34

-33

-33

-33

-33



4150

4200

4250

4300

4350

4400

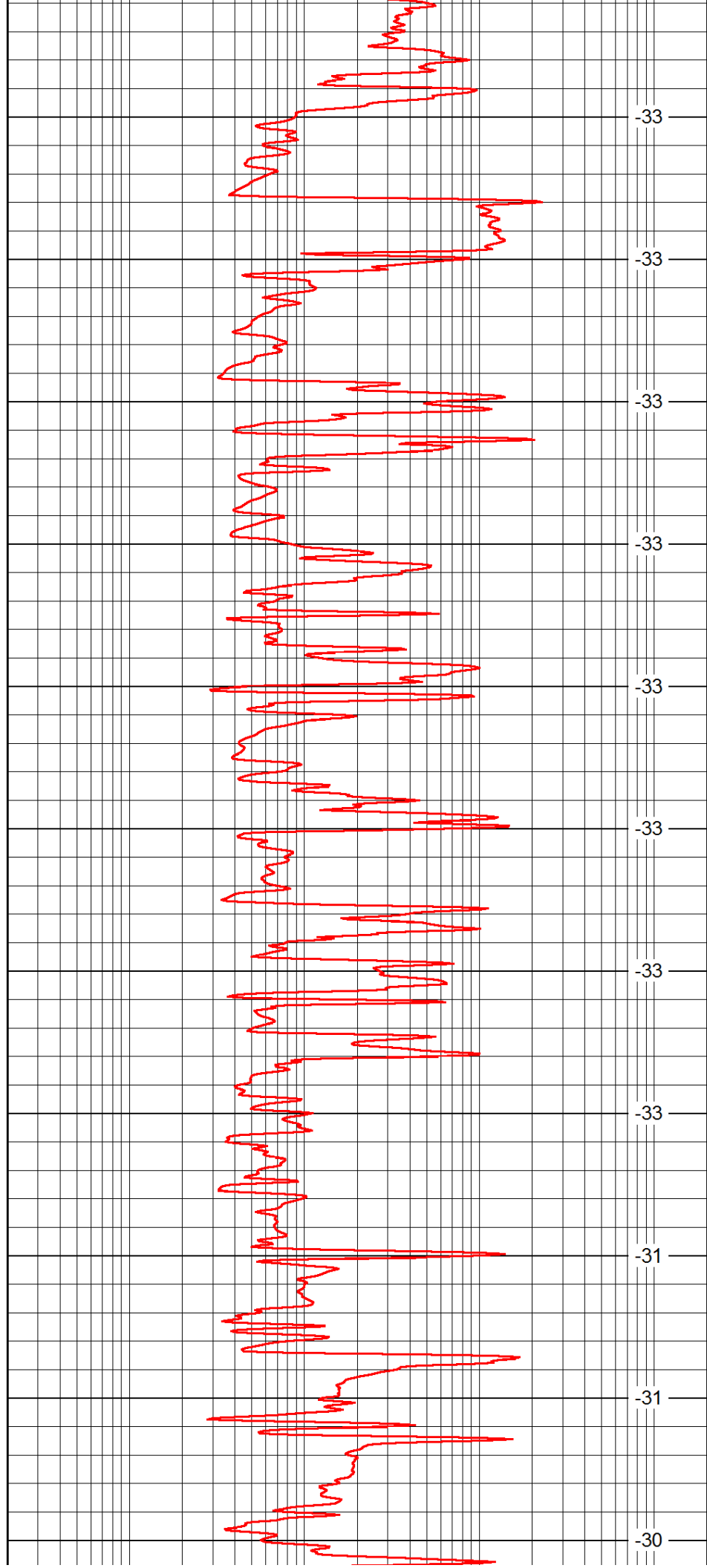
4450

4500

4550

4600

4650



-33

-33

-33

-33

-33

-33

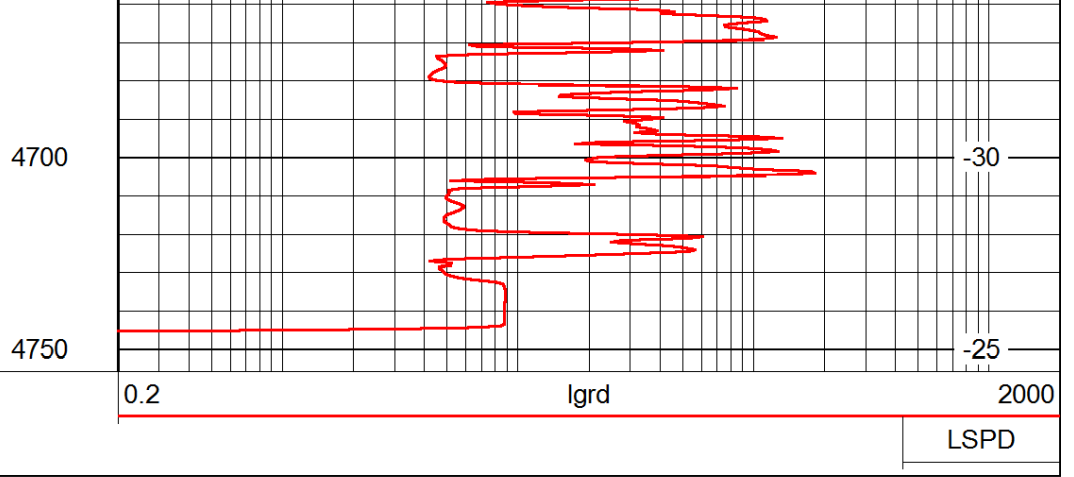
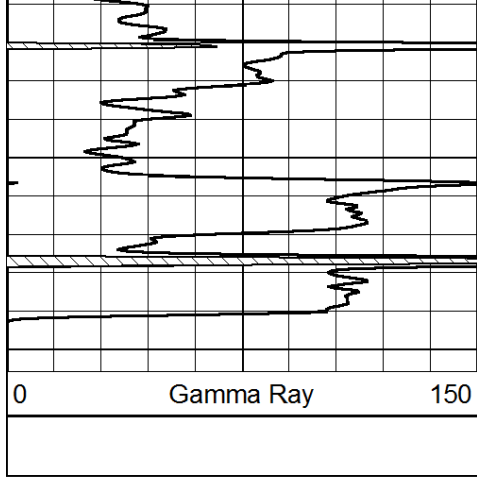
-33

-33

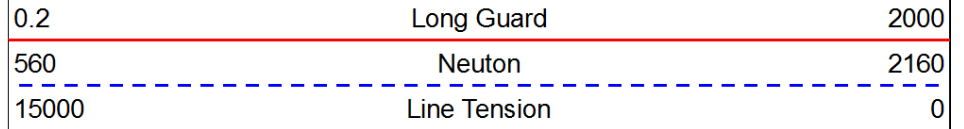
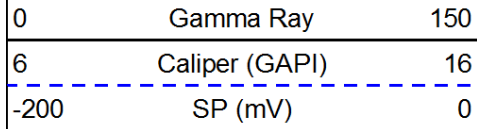
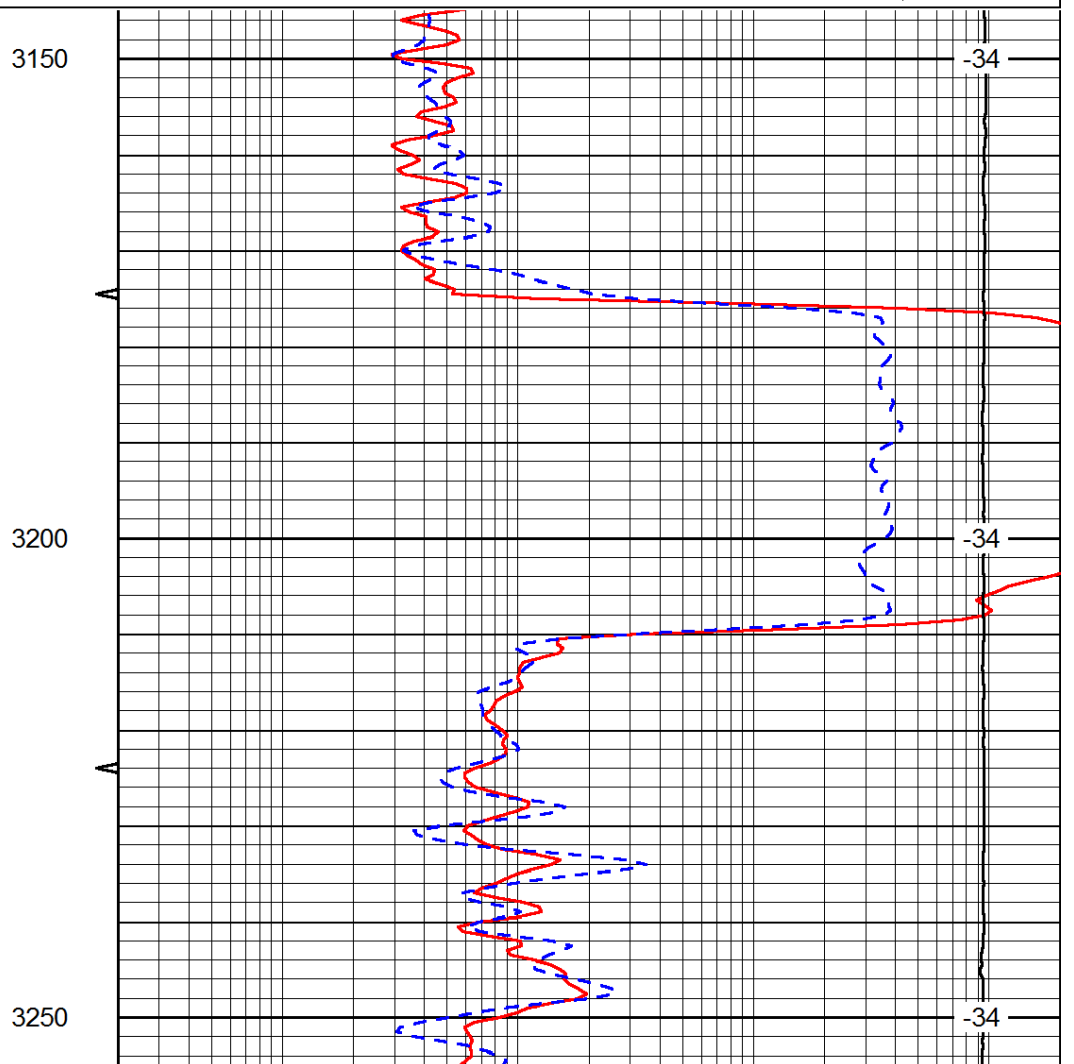
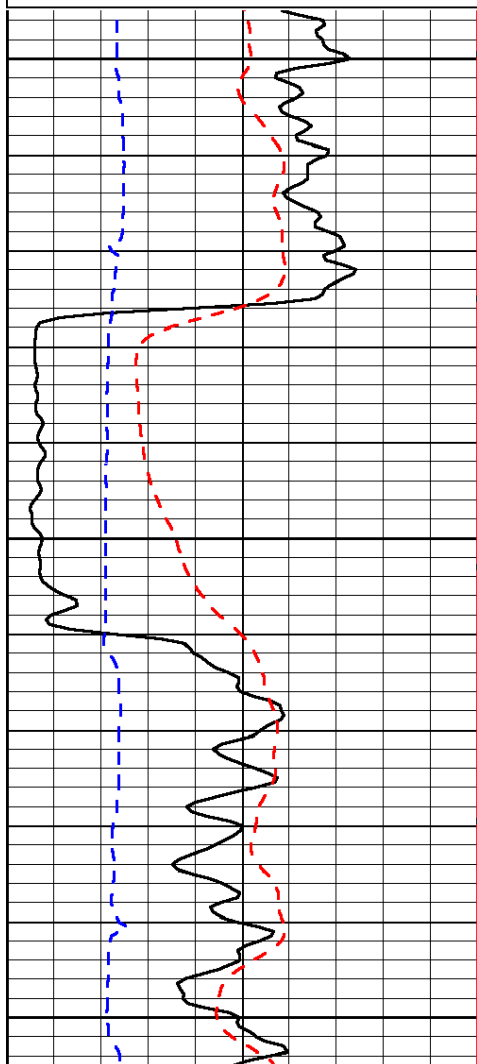
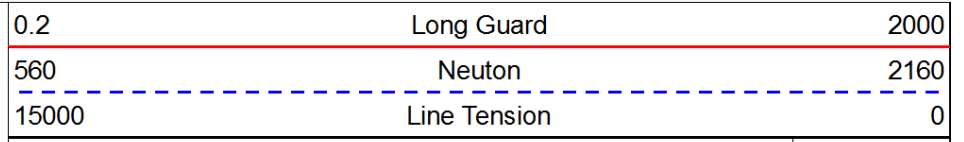
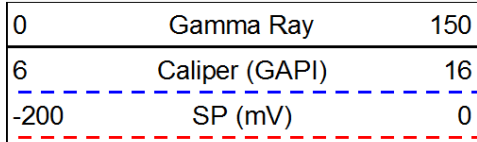
-31

-31

-30



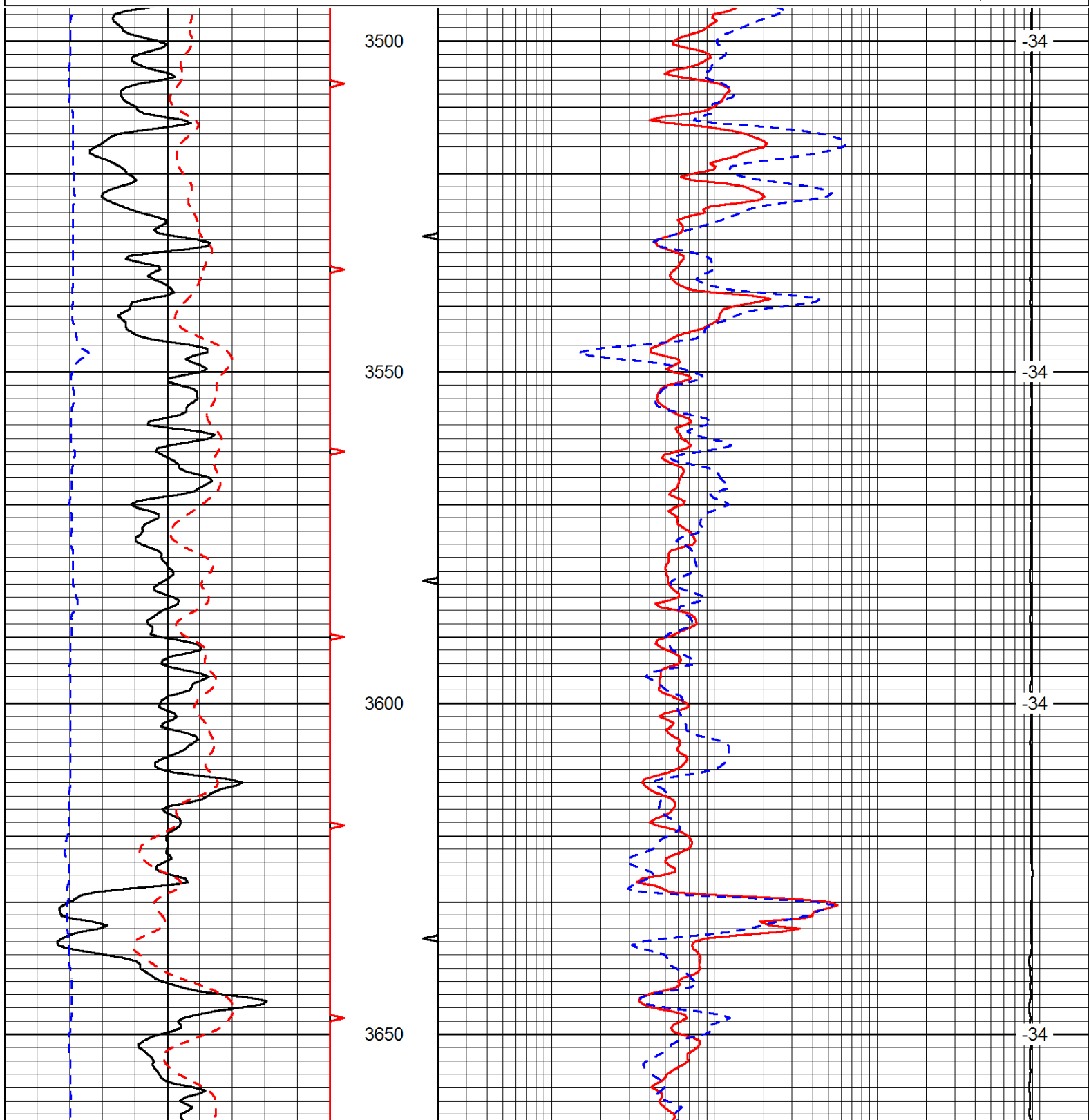
Database File: c:\warrior\data\berexco_vada b #1-17\berexco_vada_b_1-17hd2.db
 Dataset Pathname: rag/berrag
 Presentation Format: rag
 Dataset Creation: Sat Mar 23 07:04:19 2013
 Charted by: Depth in Feet scaled 1:240

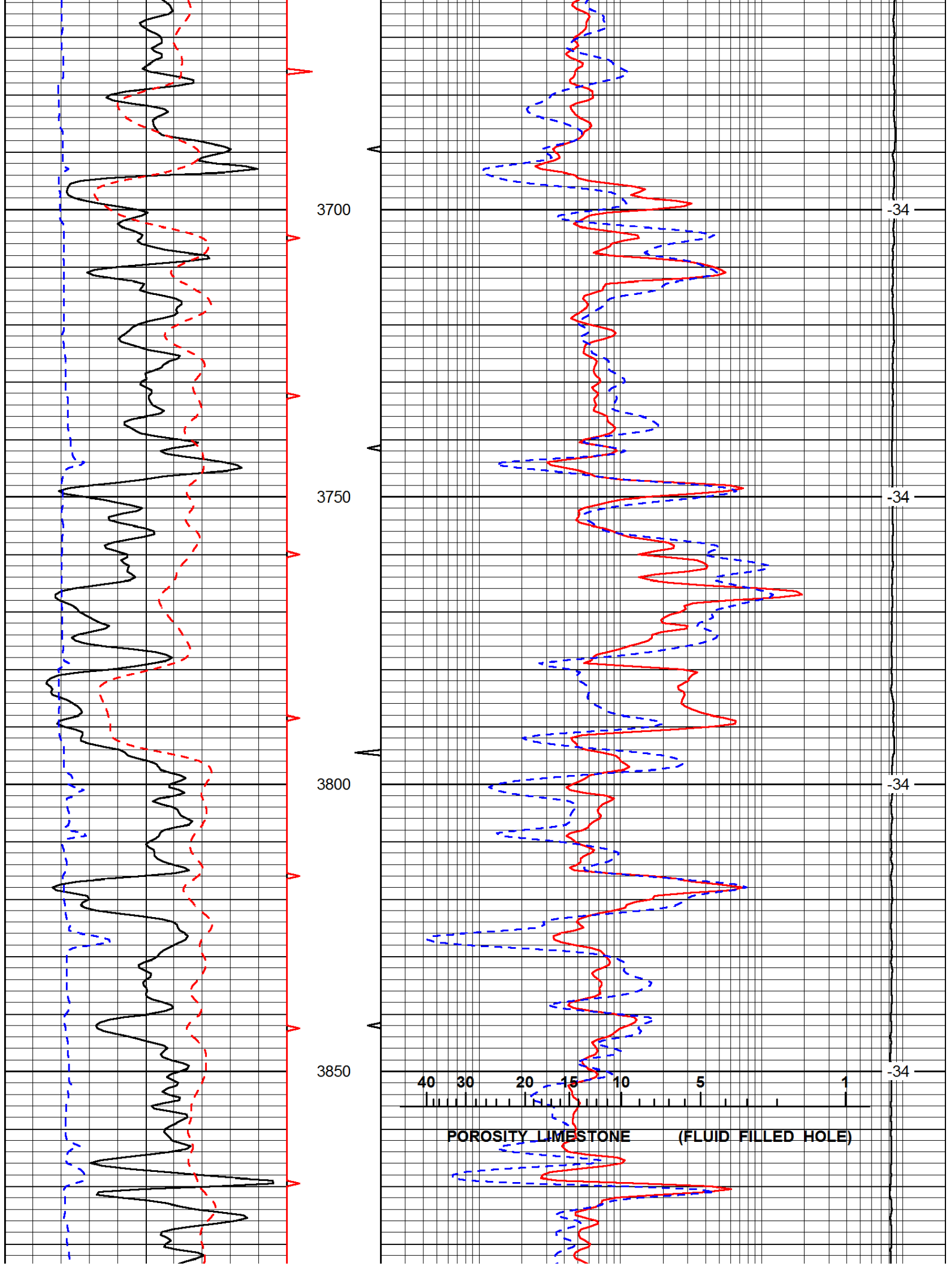


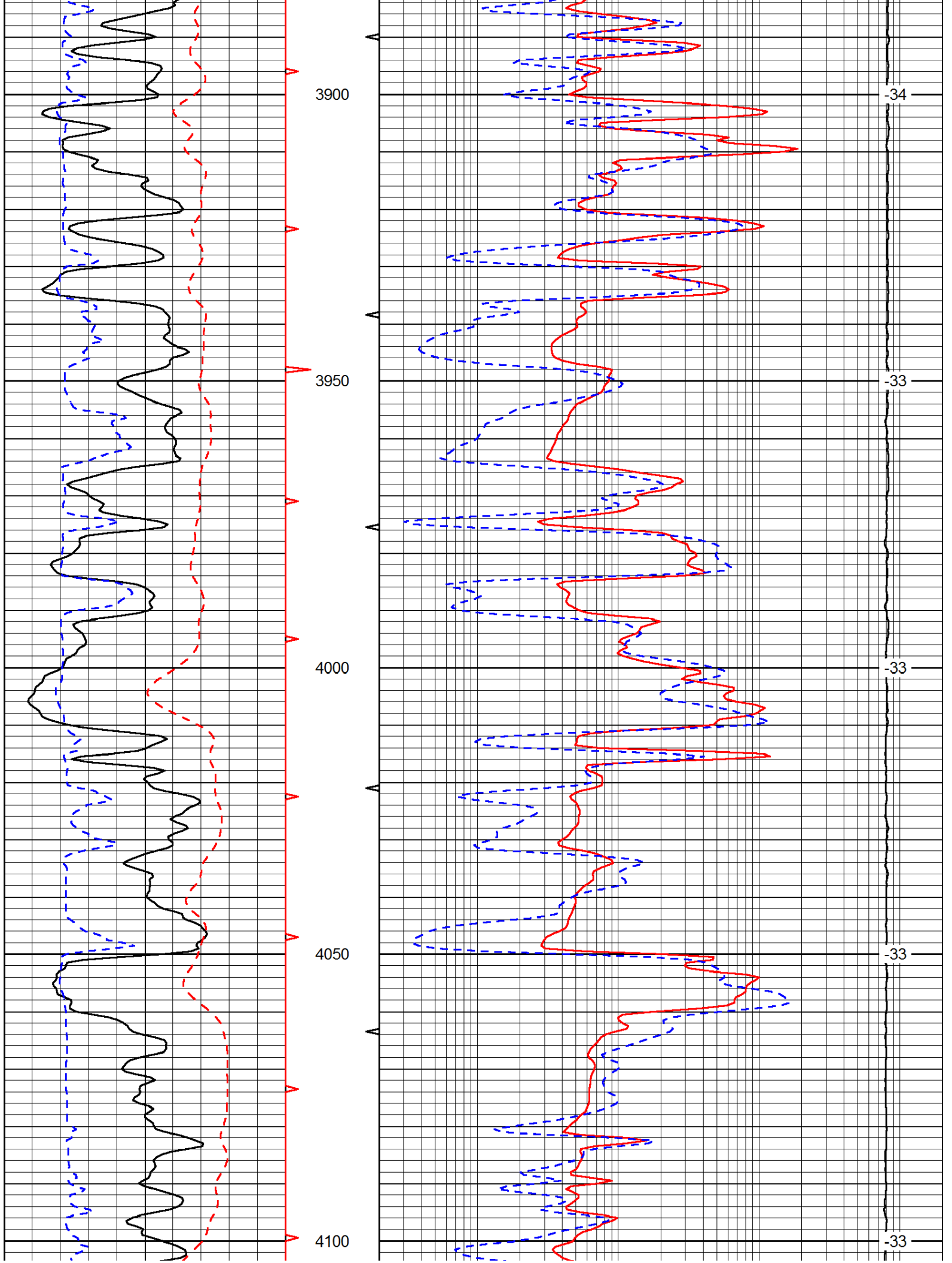
Database File: c:\warrior\data\berexco_vada b #1-17\berexco_vada_b_1-17hd2.db
 Dataset Pathname: rag/berrag
 Presentation Format: rag
 Dataset Creation: Sat Mar 23 07:04:19 2013
 Charted by: Depth in Feet scaled 1:240

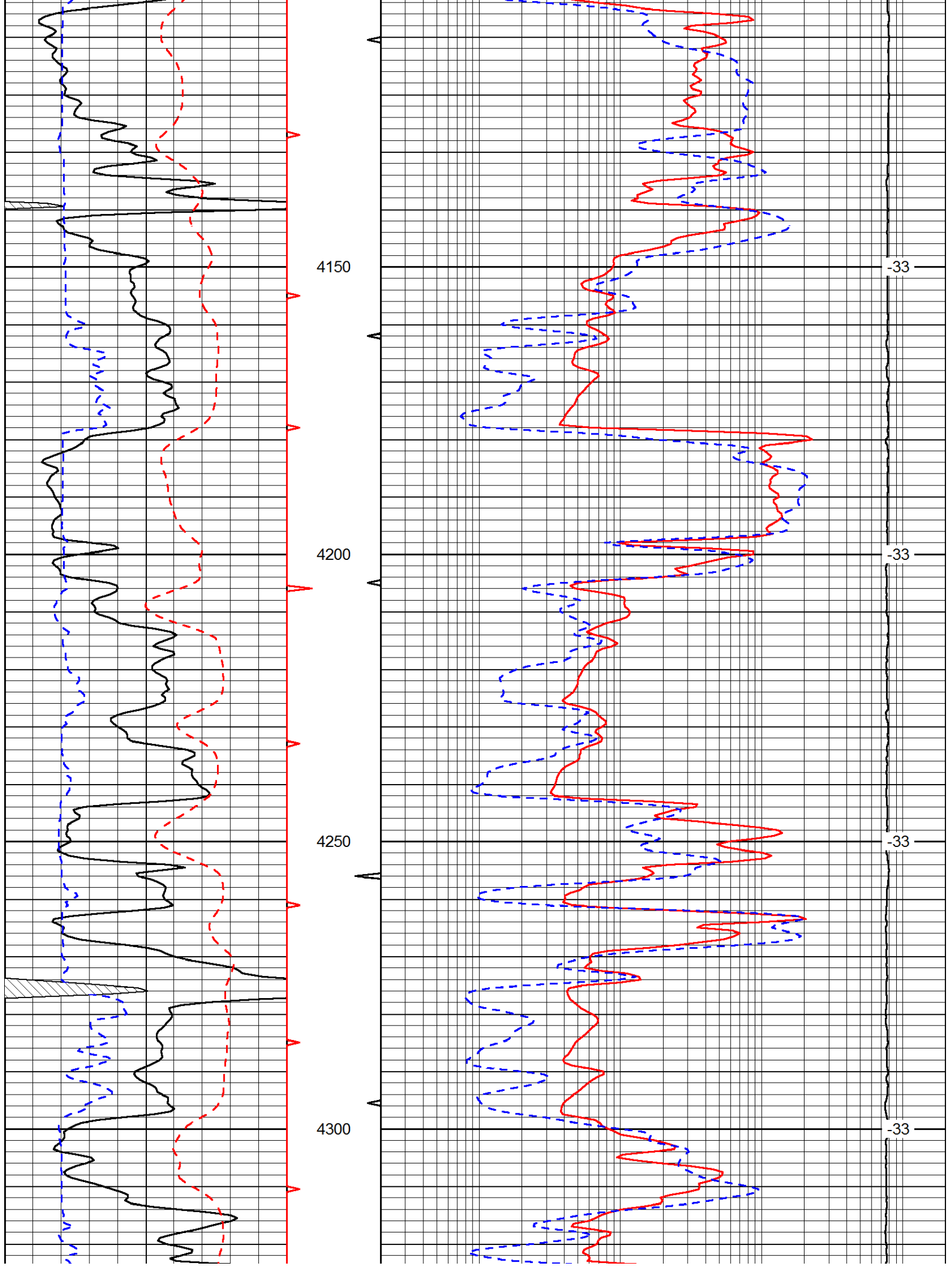
0	Gamma Ray	150	0.2	Long Guard	2000
6	Caliper (GAPI)	16	560	Neuton	2160
-200	SP (mV)	0	15000	Line Tension	0

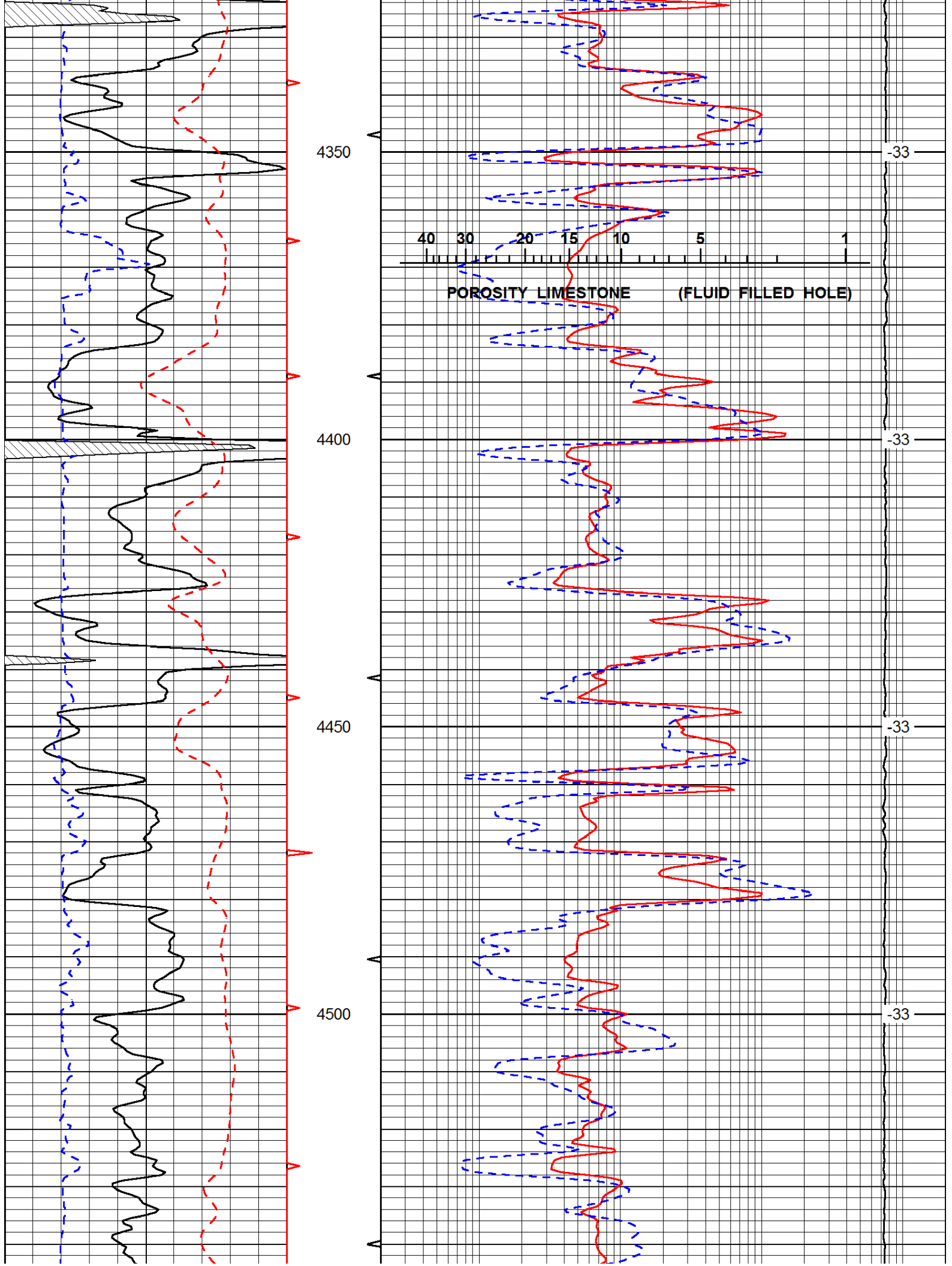
LSPD

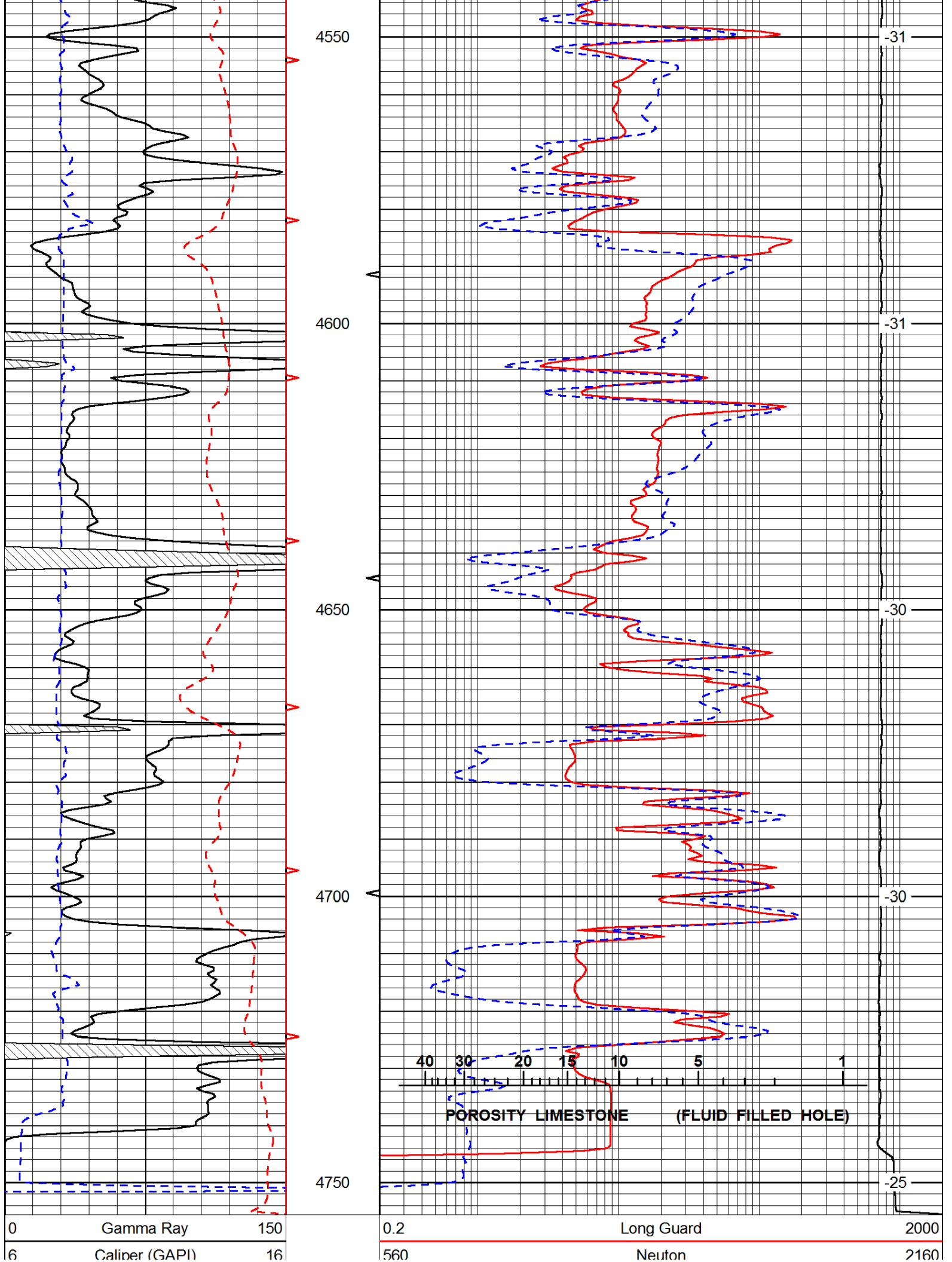












-200 SP (mV) 0

15000 Line Tension 0

LSPD