



Pioneer Energy Services

Dual Compensated Porosity Log

API No.	15-065-23,918-00-00		
Company	H&C Oil Operating, Inc.		
Well	McGrath Unit No. 36 - 1		
Field	Wildcat		
County	Graham	State	Kansas
Location	2310' FSL & 2640' FWL		
Sec:	36	Twp:	9 S
		Rge:	25 W
Permanent Datum	Ground Level	Elevation	2497
Log Measured From	Kelly Bushing	5 Ft. Above Perm. Datum	
Drilling Measured From	Kelly Bushing		
Date	4/22/2013		
Run Number	One		
Type Log	CNL / CDL		
Depth Driller	4100		
Depth Logger	4104		
Bottom Logged Interval	4083		
Top Logged Interval	3450		
Type Fluid In Hole	Chemical		
Salinity, PPM CL	1500		
Density	9.3		
Level	Full		
Max. Rec. Temp. F	117		
Operating Rig Time	4 Hours		
Equipment -- Location	15 Days		
Recorded By	D. Martin		
Witnessed By	Marc Downing		

Borehole Record				Casing Record			
Run No.	Bit	From	To	Size	Wgt.	From	To
One	12.25	00	326	8.625	23#	00	326
Two	7.875	326	TD				

Other Services
DILMEL
Elevation
K.B. 2502
D.F. 2497
G.L. 2497

<<< Fold Here >>>

All interpretations are opinions based on inferences from electrical or other measurements and we cannot and do not guarantee the accuracy or correctness of any interpretation, and we shall not, except in the case of gross or willful negligence on our part, be liable or responsible for any loss, costs, damages, or expenses incurred or sustained by anyone resulting from any interpretation made by any of our officers, agents or employees. These interpretations are also subject to our general terms and conditions set out in our current Price Schedule.

Comments

Thank you for using Log-Tech, Inc.
(785) 625-3858

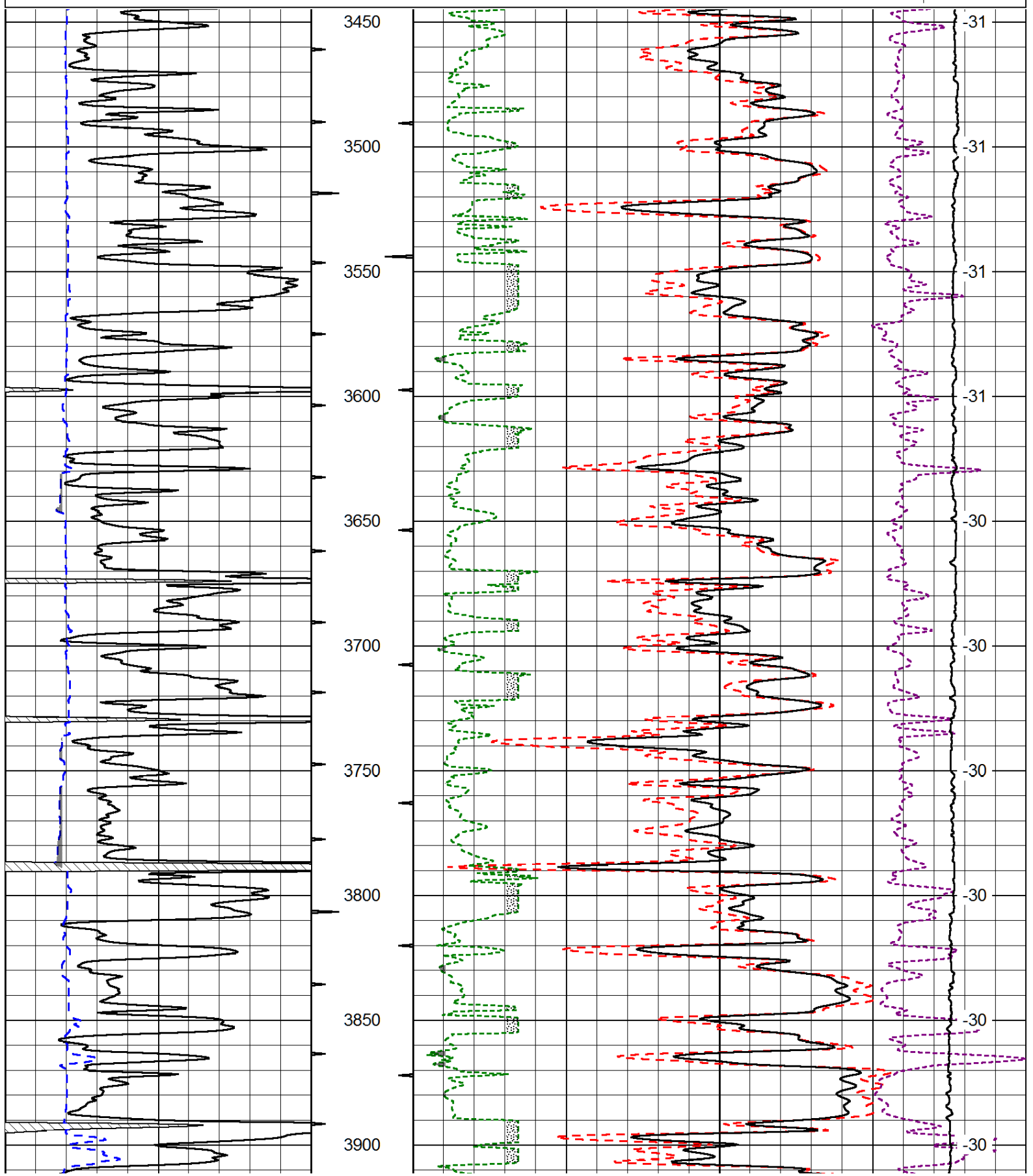
Wakeeney, KS
N to Redline Rd.(H Rd.),
10 W to 160 Rd., 1 S, 1/2 W, N Into

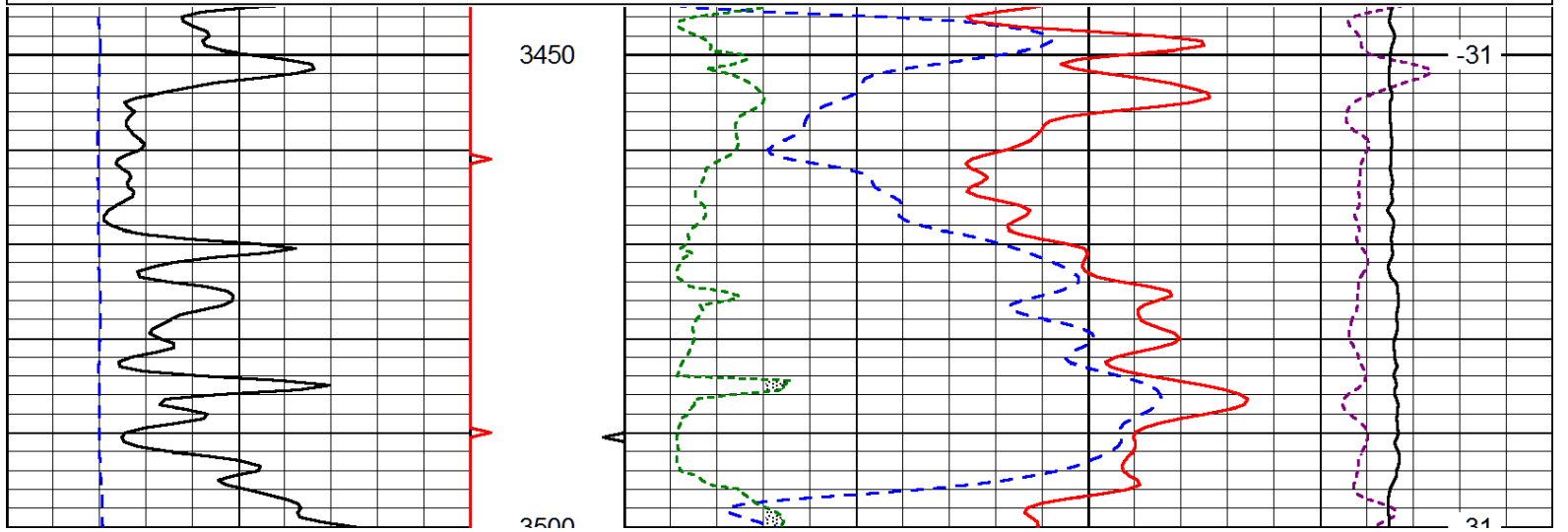
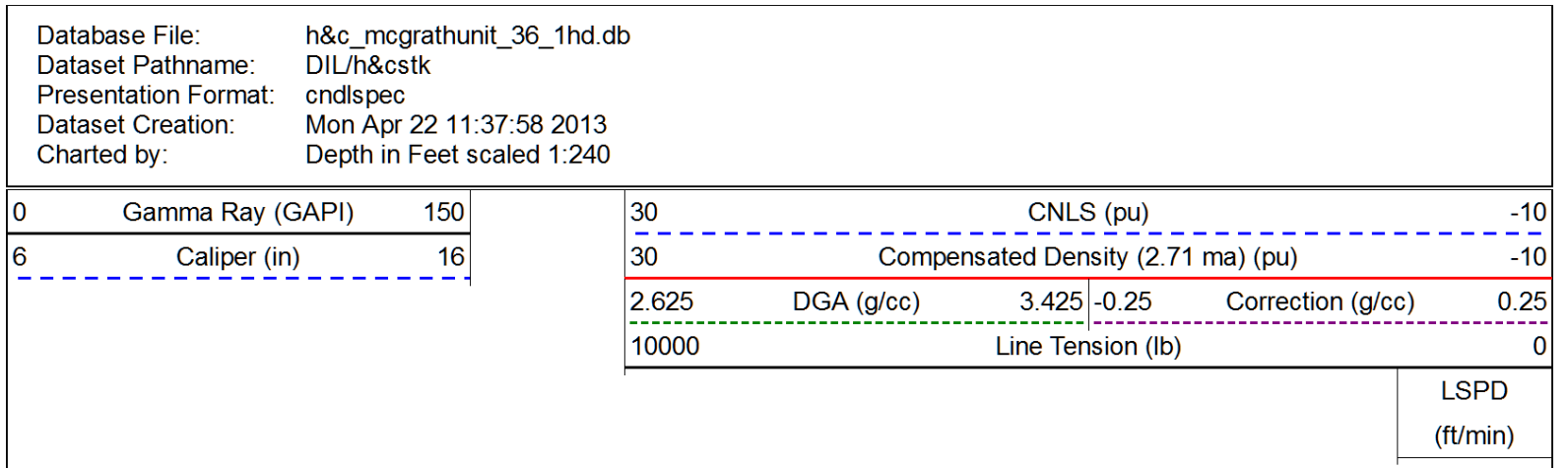
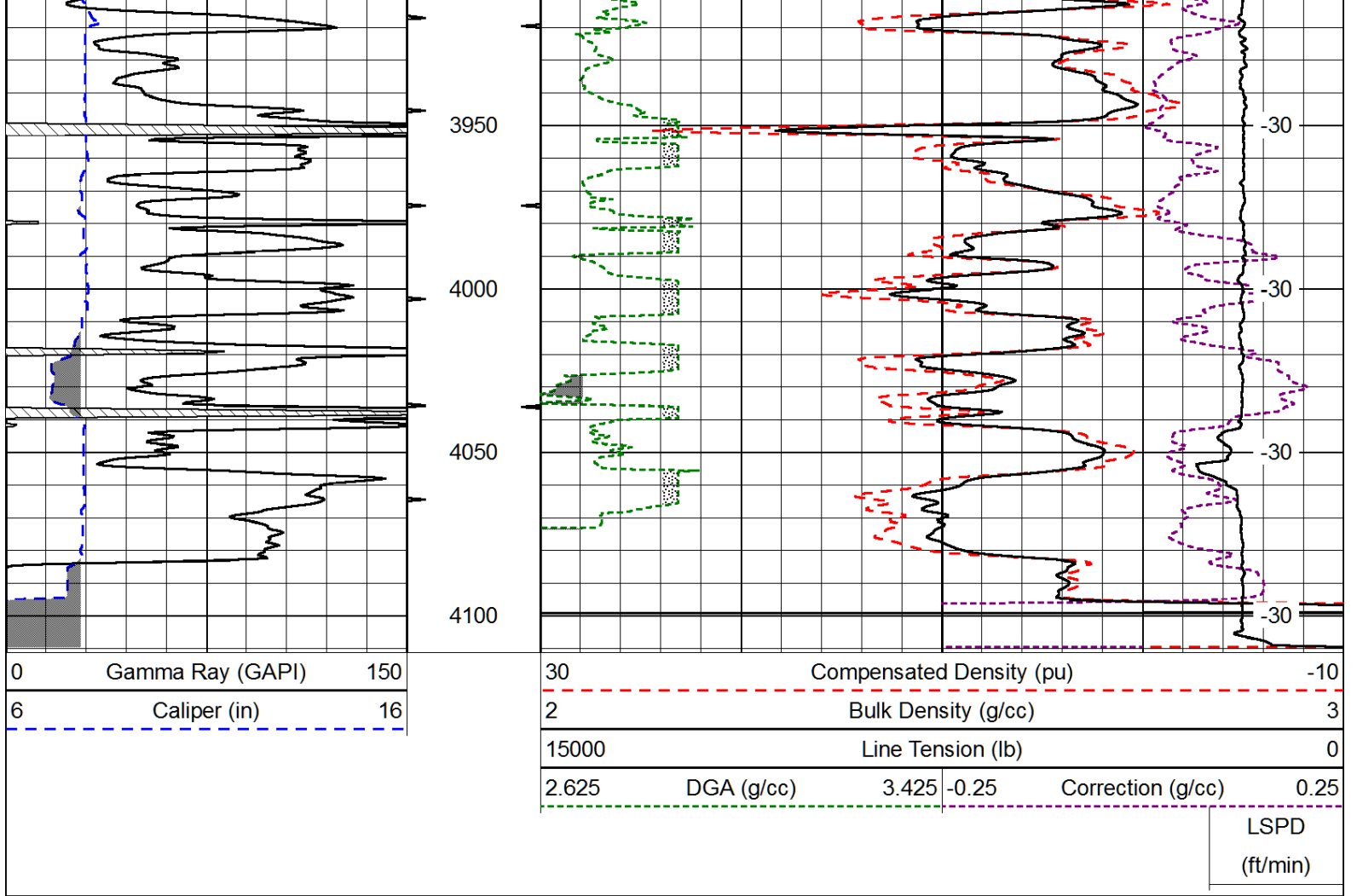
Database File: h&c_mcgrathunit_36_1hd.db
 Dataset Pathname: DIL/h&cstk
 Presentation Format: cdl
 Dataset Creation: Mon Apr 22 11:37:58 2013
 Charted by: Depth in Feet scaled 1:600

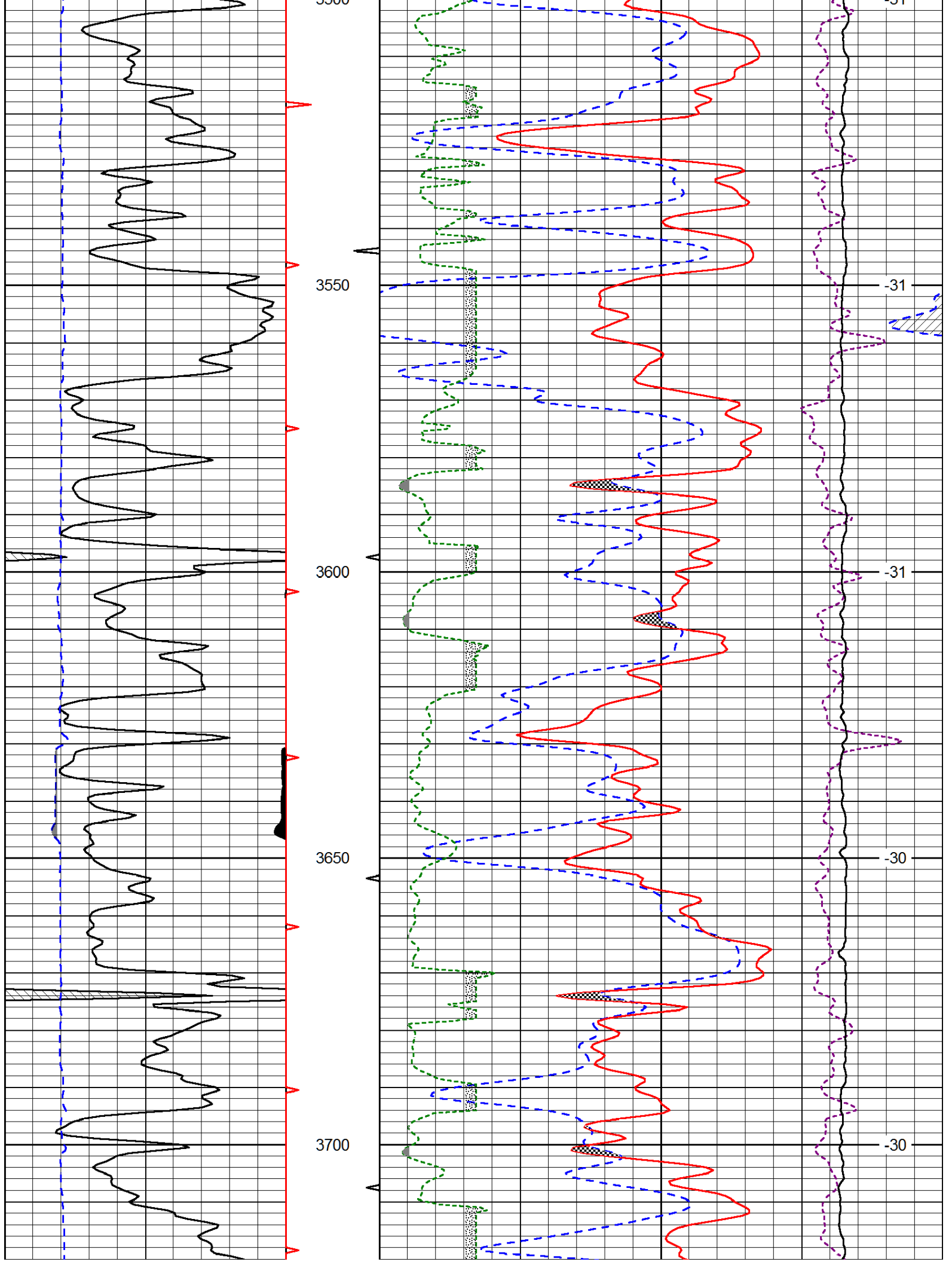
0	Gamma Ray (GAPI)	150
6	Caliper (in)	16

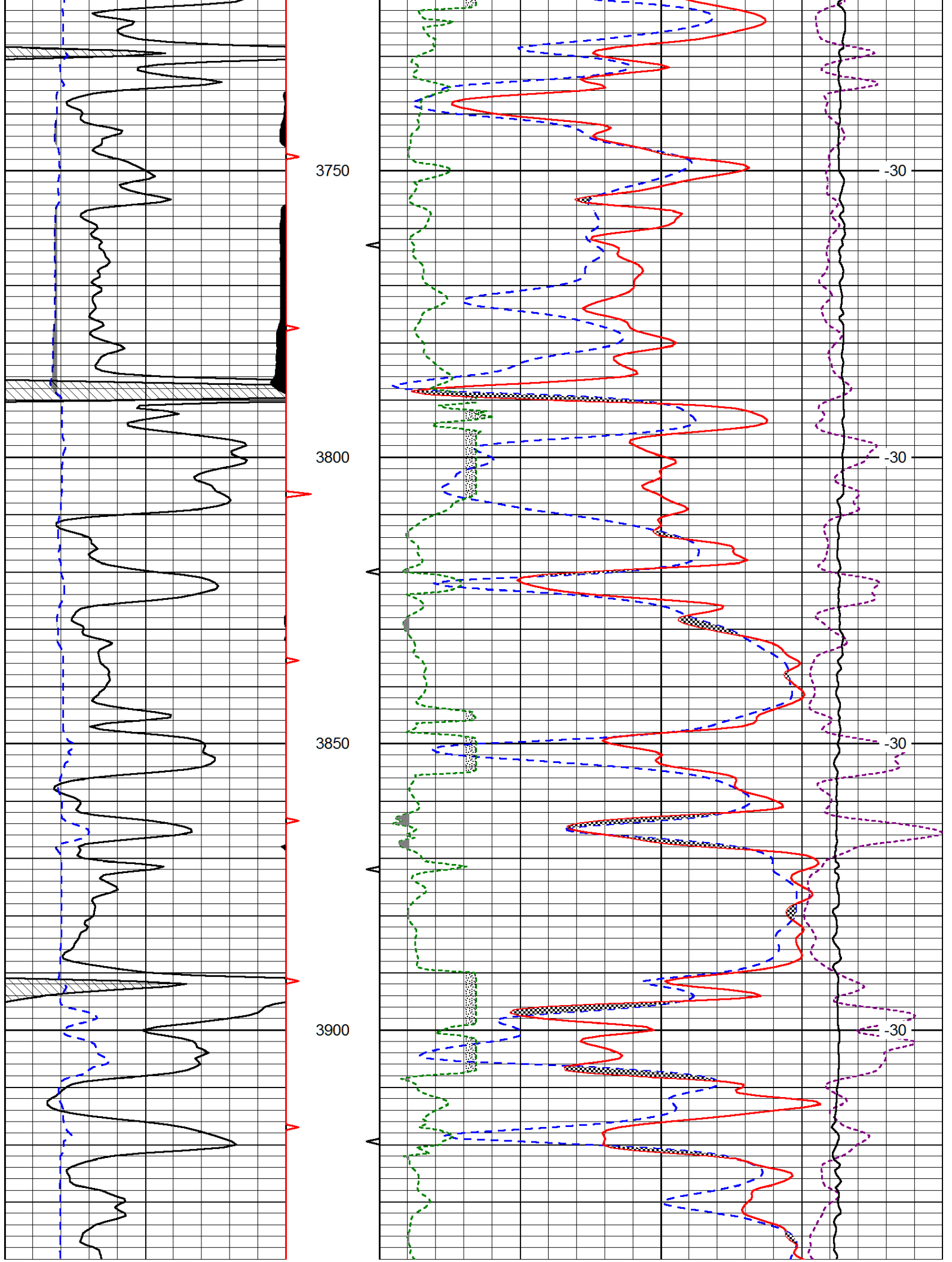
30	Compensated Density (pu)		-10
2	Bulk Density (g/cc)		3
15000	Line Tension (lb)		0
2.625	DGA (g/cc)	3.425	-0.25
			Correction (g/cc)
			0.25

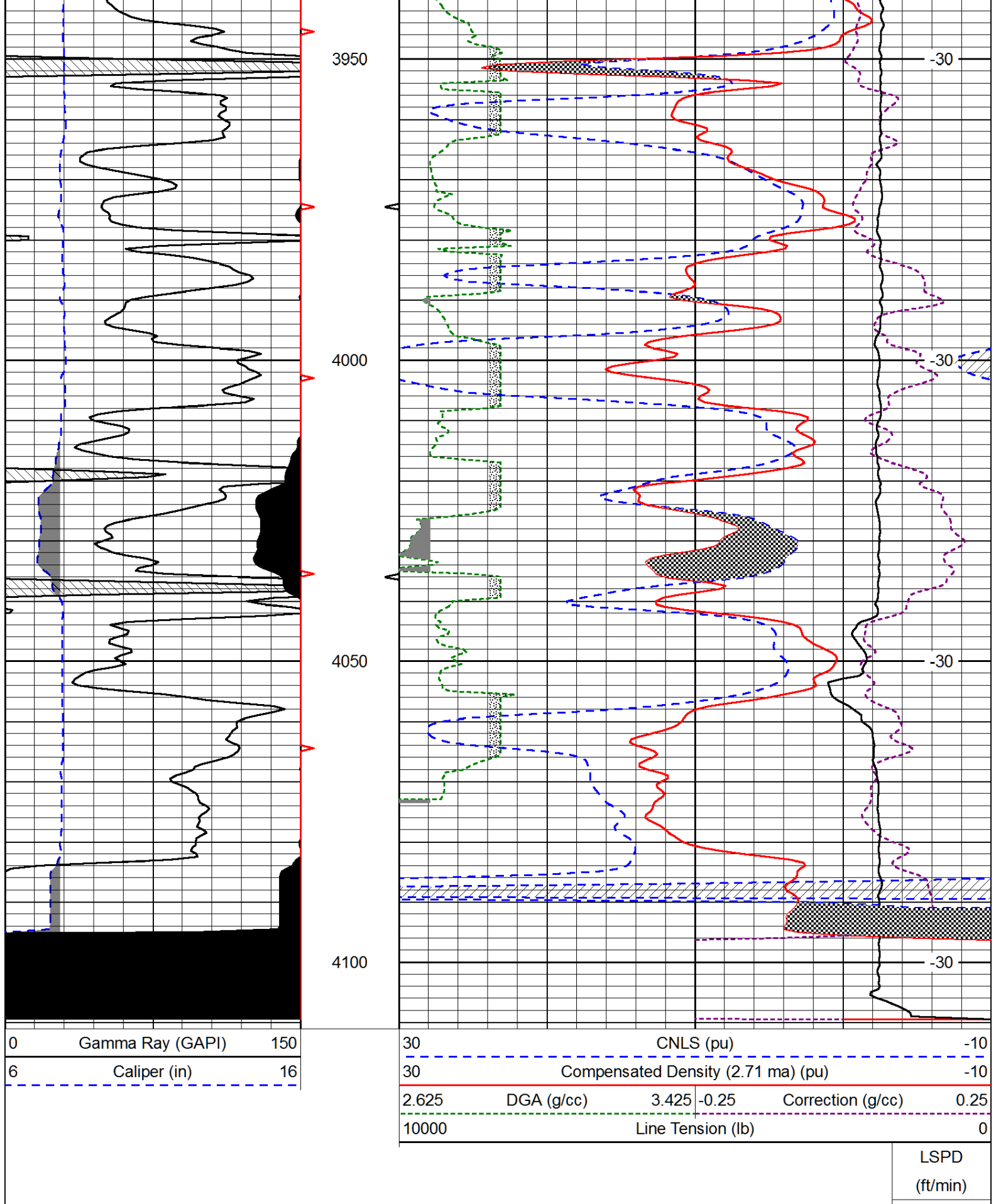
LSPD
(ft/min)











0 Gamma Ray (GAPI) 150
 6 Caliper (in) 16

30 CNLS (pu) -10
 30 Compensated Density (2.71 ma) (pu) -10
 2.625 DGA (g/cc) 3.425 -0.25 Correction (g/cc) 0.25
 10000 Line Tension (lb) 0

LSPD
(ft/min)