



Pioneer Energy Services

Sector Bond / Gamma Ray
CCL Log

API No.

15-051-26509-00-00

Company Samuel Gary JR. And Associates, Inc.

Well Pfeifer 1-31

Field Wildcat

County Ellis State Kansas

Location

520' FSL & 1865' FEL

Other Services

Perforate

Sec: 31 Twp: 14S Rge: 16W

Elevation

Permanent Datum Ground Level Elevation 1919
Log Measured From Kelly Bushing 10 Ft. Above Perm. Datum
Drilling Measured From Kelly Bushing

K.B. 1929
D.F. 1928
G.L. 1919

| | | |
|---------------------------|--------------|------|
| Run Number | One | |
| Date Survey | 04/25/2013 | |
| Date Cementing | 04/20/2013 | |
| Type Cementing Operation | Primary | |
| Depth Driller | 3590 | |
| Depth Logger | 3538 | |
| Logged Interval | 3537 to 2200 | |
| Casing Driller | 5.5 @ T.D. | @ |
| Float Collar -- D.V. Tool | //// | //// |
| Squeeze Depth | //// | |
| Amount & Type Cement | //// | |
| Amount & Type Admix | //// | |
| Type Fluid In Hole | Water | |
| Fluid Level | Full | |
| Salinity PPM CL | //// | |
| Weight lb/gal -- Vis. | //// | //// |
| Approx. Logged Cement Top | 2390 | |
| Calculated Cement Top | //// | |
| Max. Hole Temperature | 111 | |
| Tool No. | RBT 4-4 | |
| Spacing Recorded | 3-5' | |
| Equipment -- Location | 14 Hays | |
| Recorded By | David Walker | |
| Witnessed By | Kevin Strube | |

<<< Fold Here >>>

All interpretations are opinions based on inferences from electrical or other measurements and we cannot and do not guarantee the accuracy or correctness of any interpretation, and we shall not, except in the case of gross or willful negligence on our part, be liable or responsible for any loss, costs, damages, or expenses incurred or sustained by anyone resulting from any interpretation made by any of our officers, agents or employees. These interpretations are also subject to our general terms and conditions set out in our current Price Schedule.

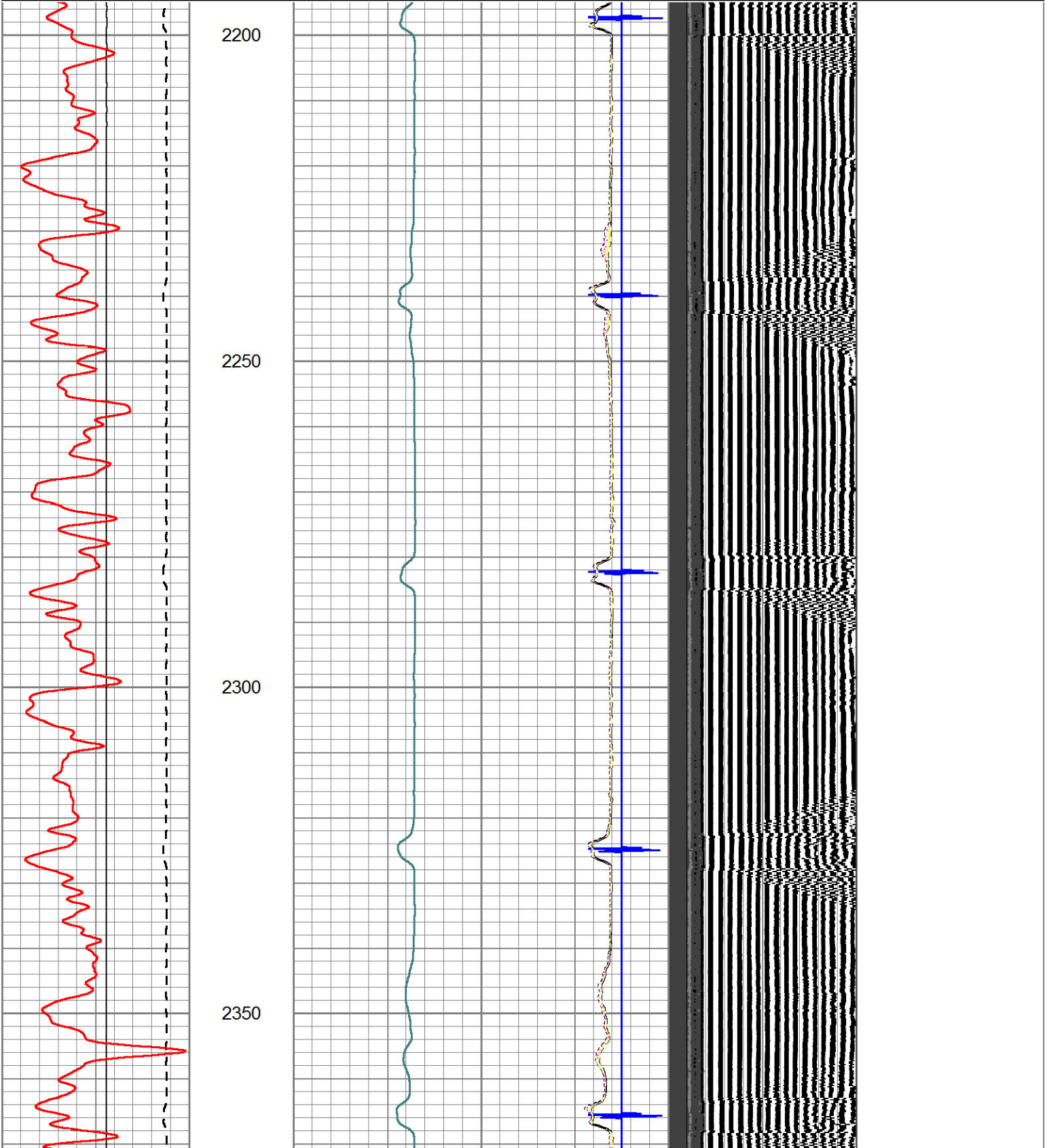
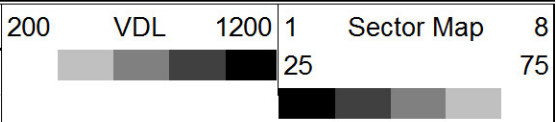
Comments

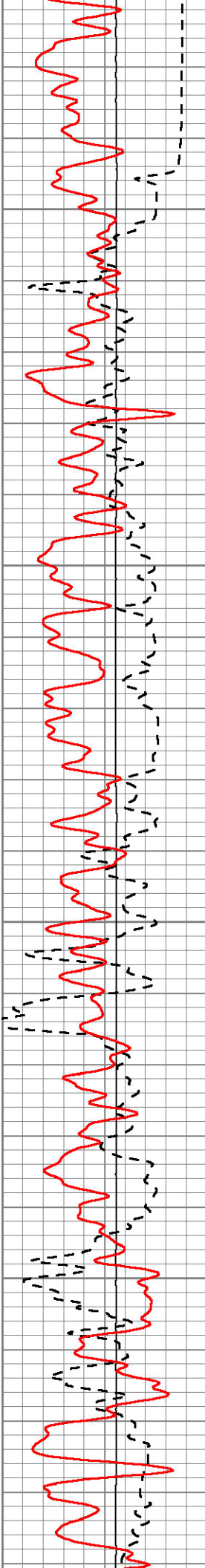
Thank you for using Pioneer Energy Services
785.625.3858
Victoria Kansas,
South to Antonino Rd.
1/2 East And North Into

Database File: sam-gary_peifier_1-31.db
 Dataset Pathname: sgrcbl/pass10
 Presentation Format: scbl
 Dataset Creation: Thu Apr 25 12:52:06 2013 by Log 7.0 B1
 Charted by: Depth in Feet scaled 1:240

| | | |
|------------|-----|--|
| TT3FT | | |
| 700 (usec) | 235 | |
| ----- | | |
| LTEN | | |
| 0 GR | 150 | |

| | | | | | |
|-------|---------------------|-----|---|--------|-----|
| 0 | Amplitude (mV) | 100 | 0 | AMPAVG | 150 |
| ----- | | | | | |
| | Amplified Amplitude | | 0 | AMPMAX | 150 |
| ----- | | | | | |
| 0 | (mV) | 20 | 0 | AMPMIN | 150 |
| ----- | | | | | |
| | | | 3 | CCL | -1 |





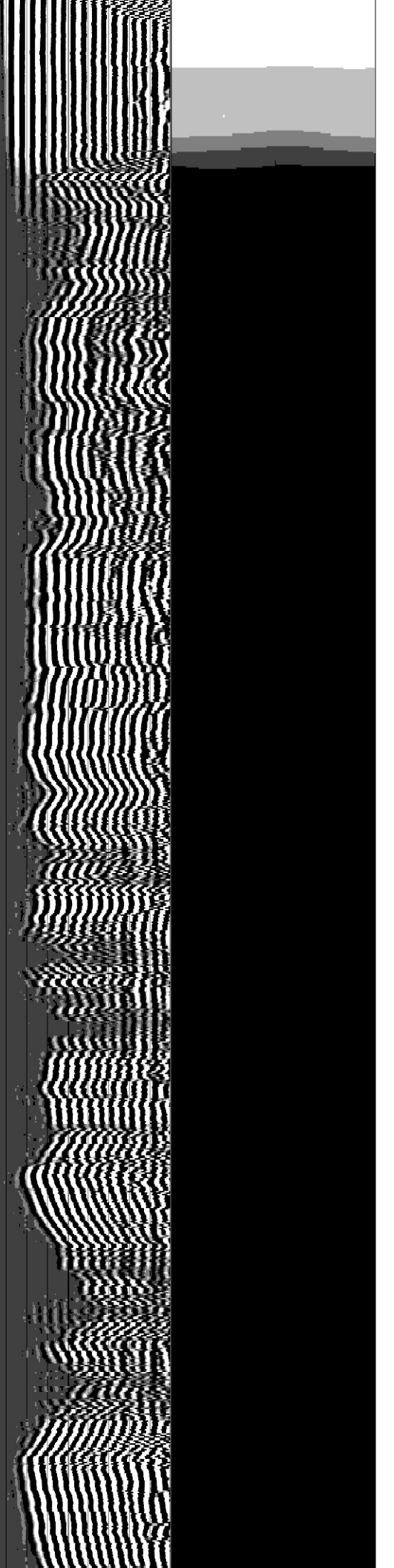
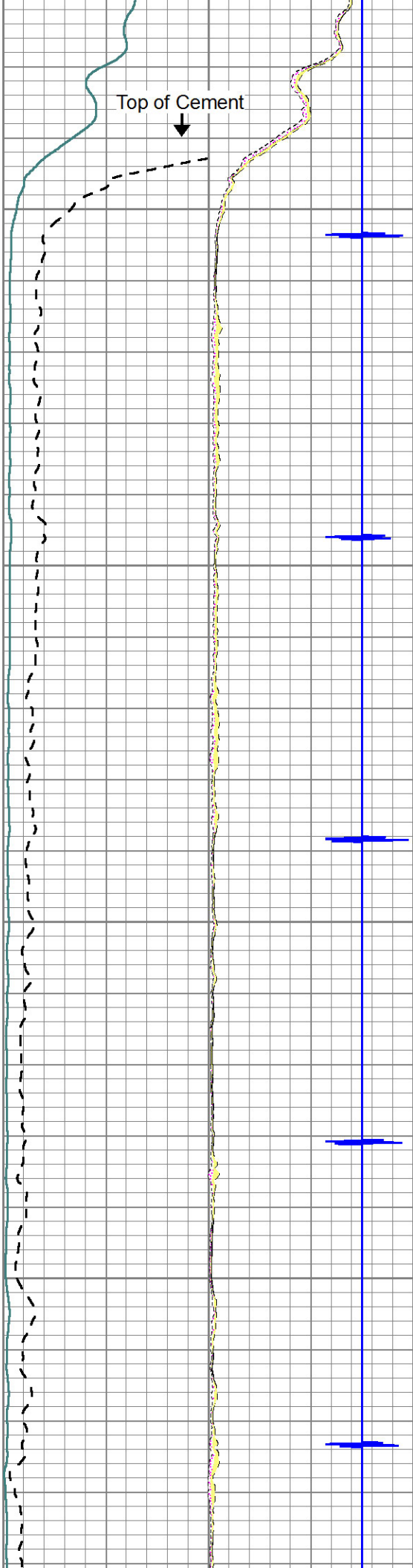
2400

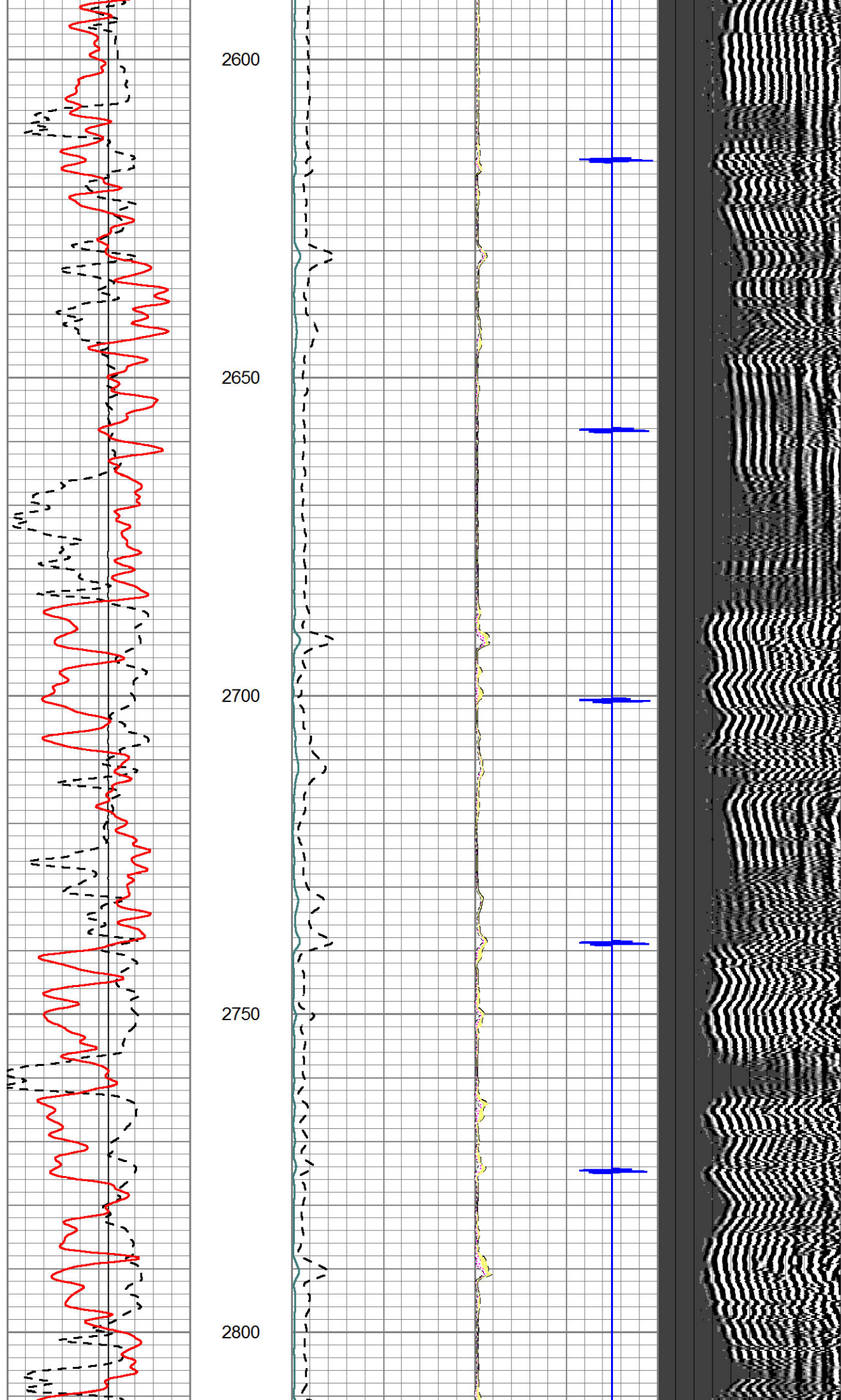
2450

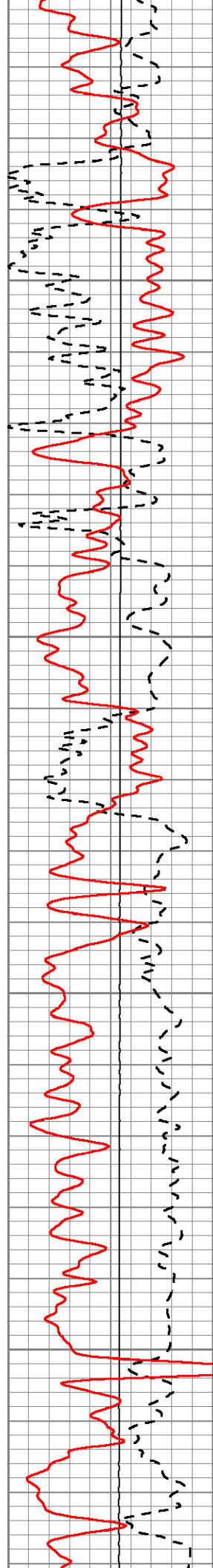
2500

2550

Top of Cement





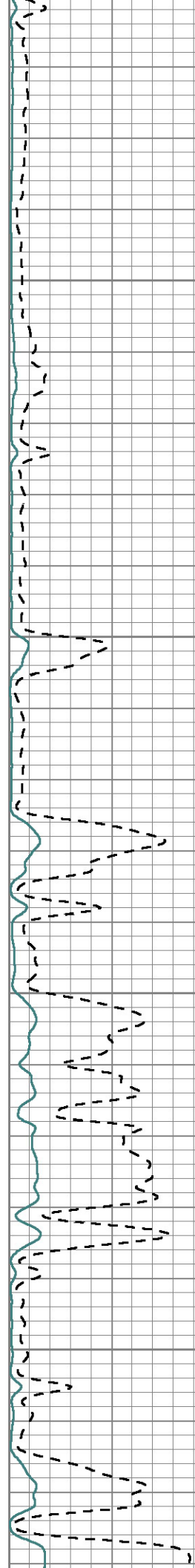


2850

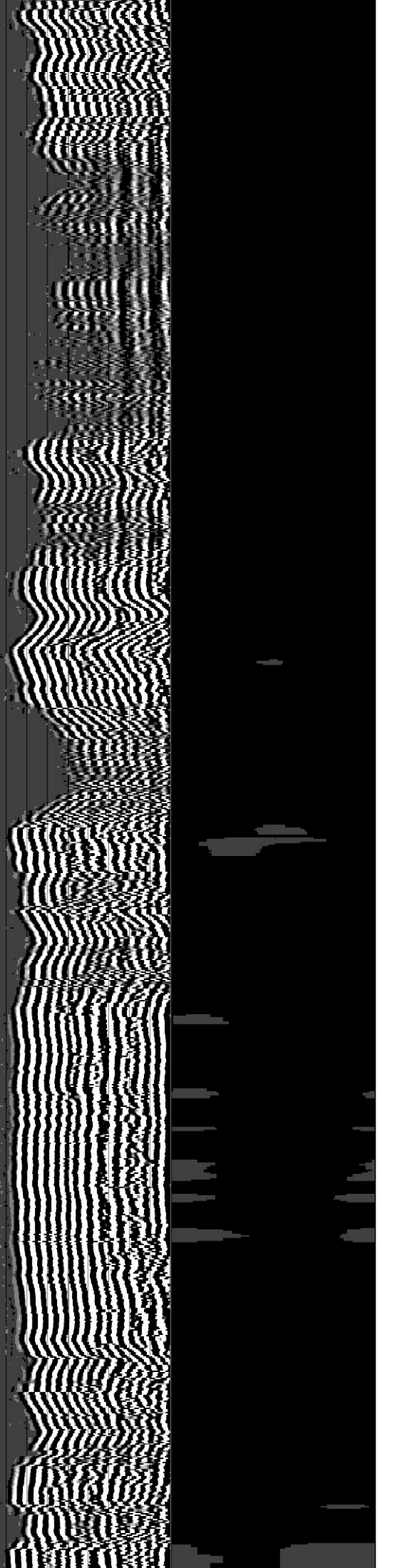
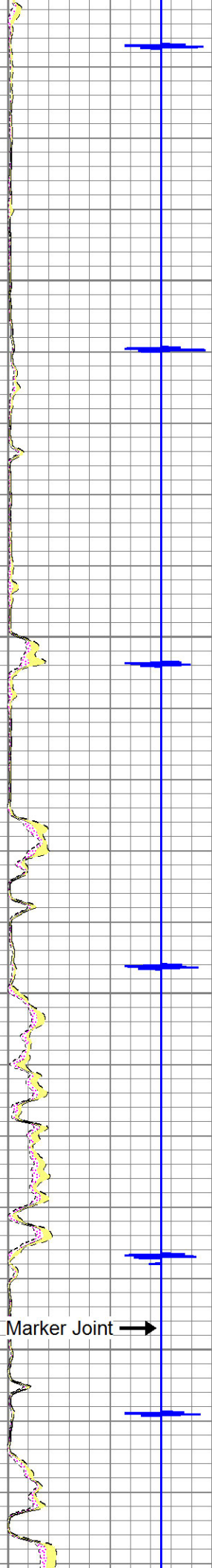
2900

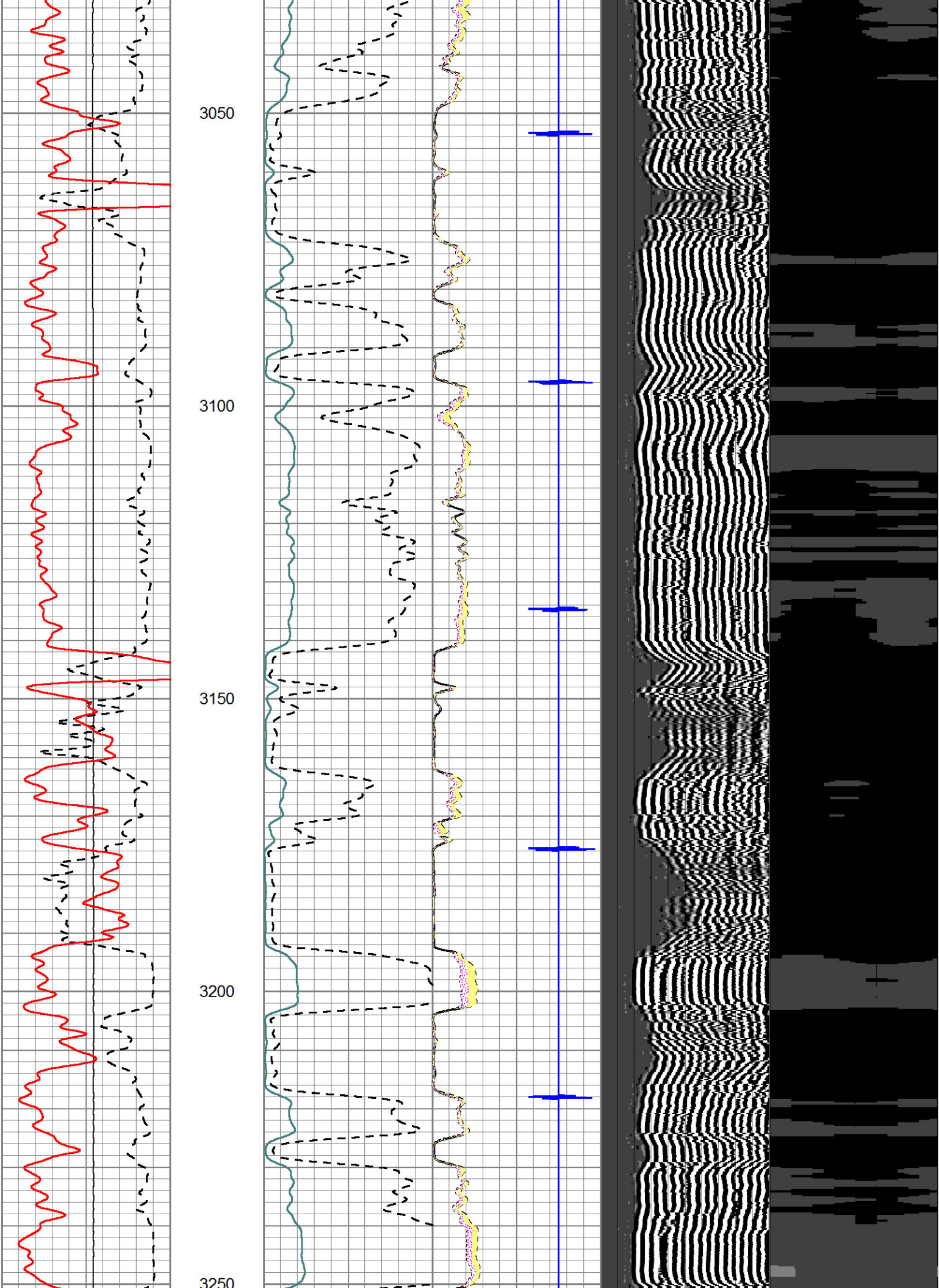
2950

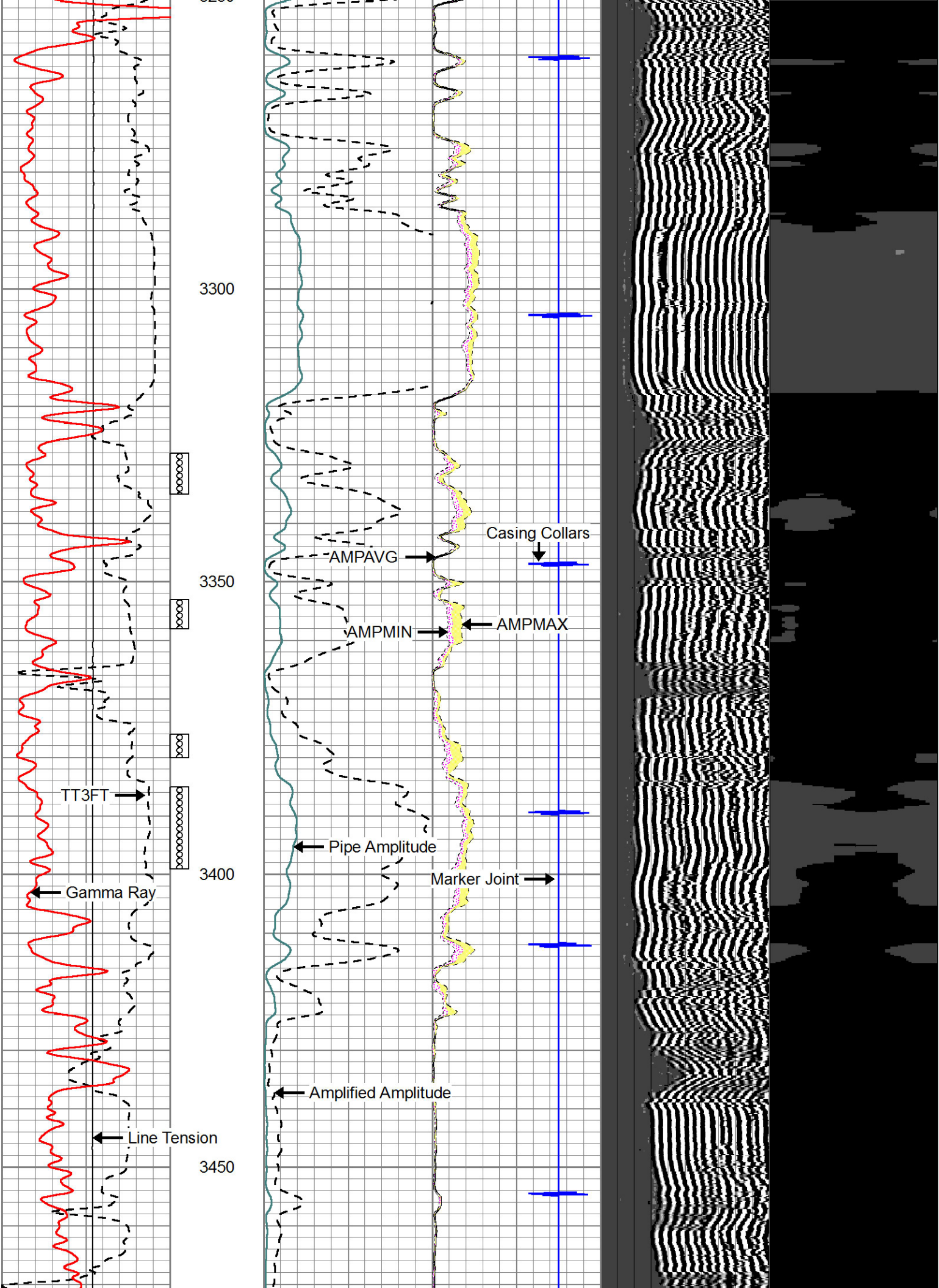
3000

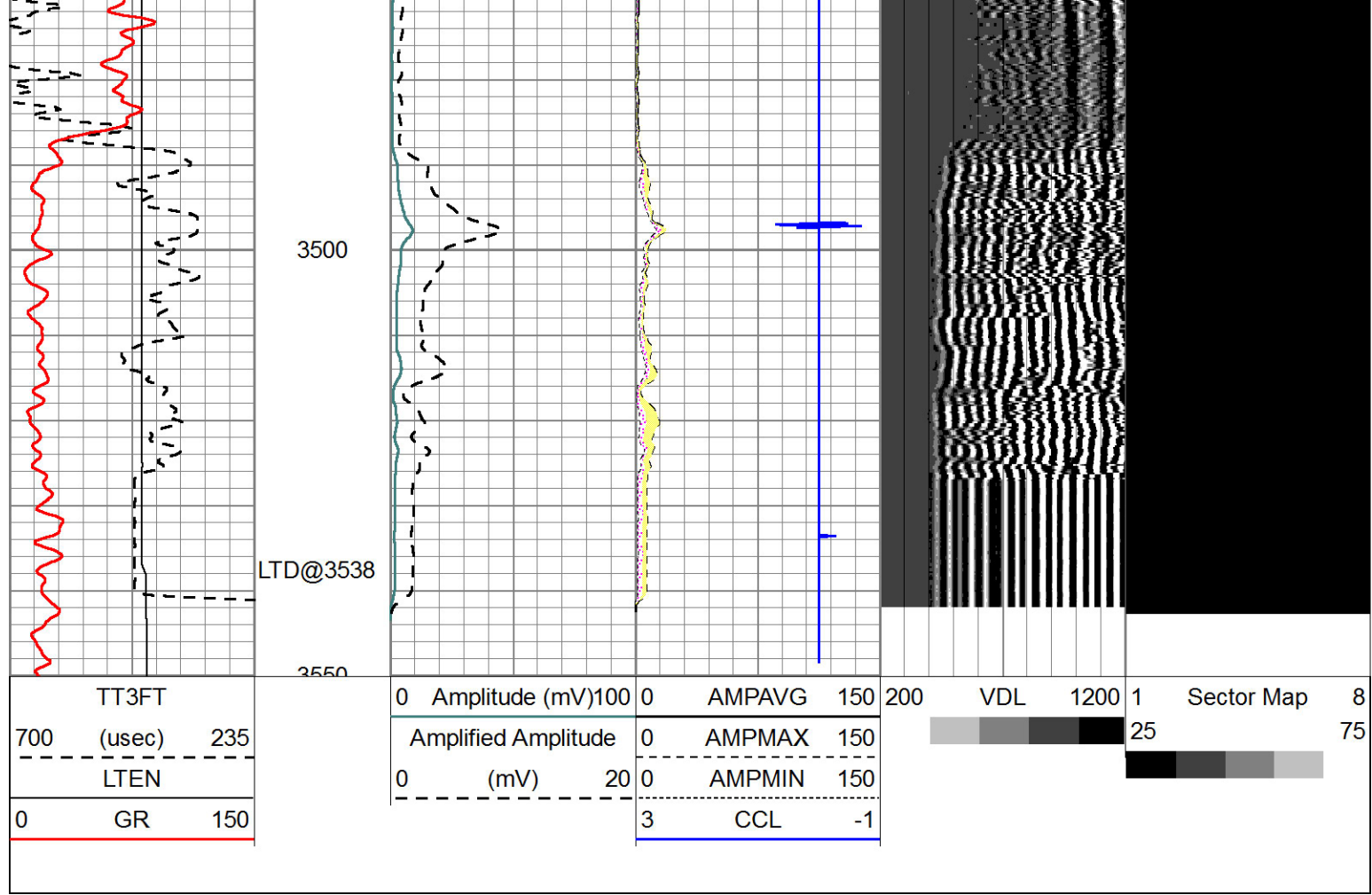


Marker Joint →



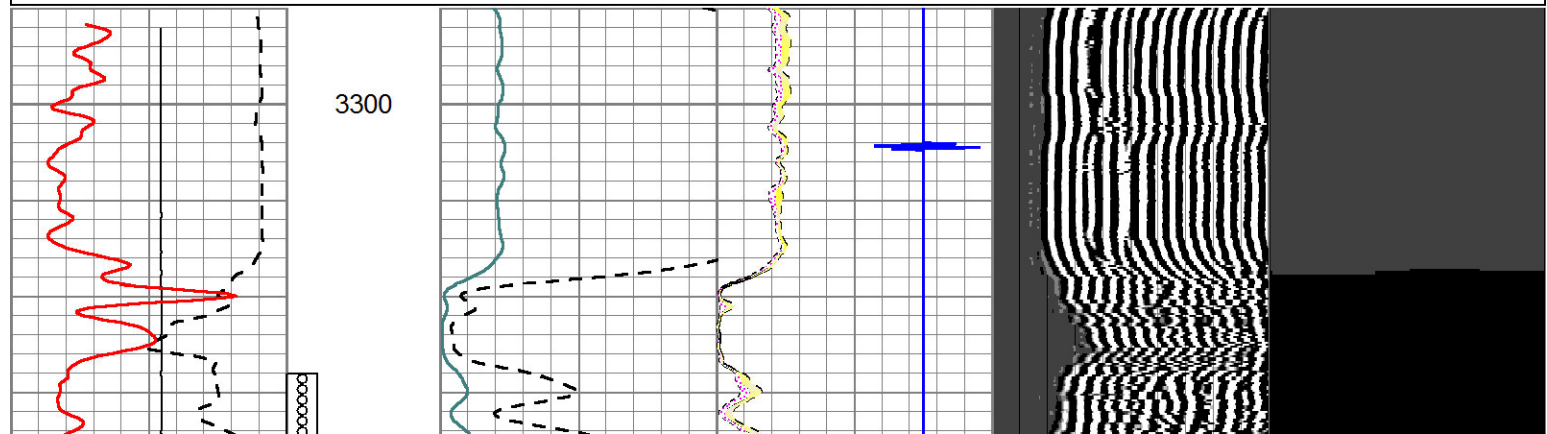
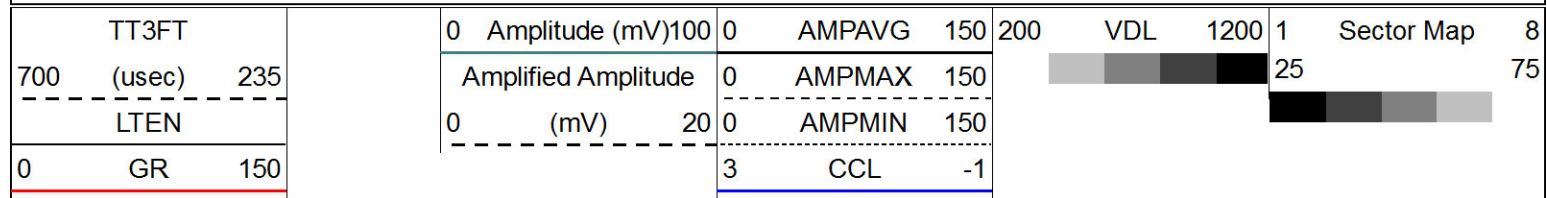


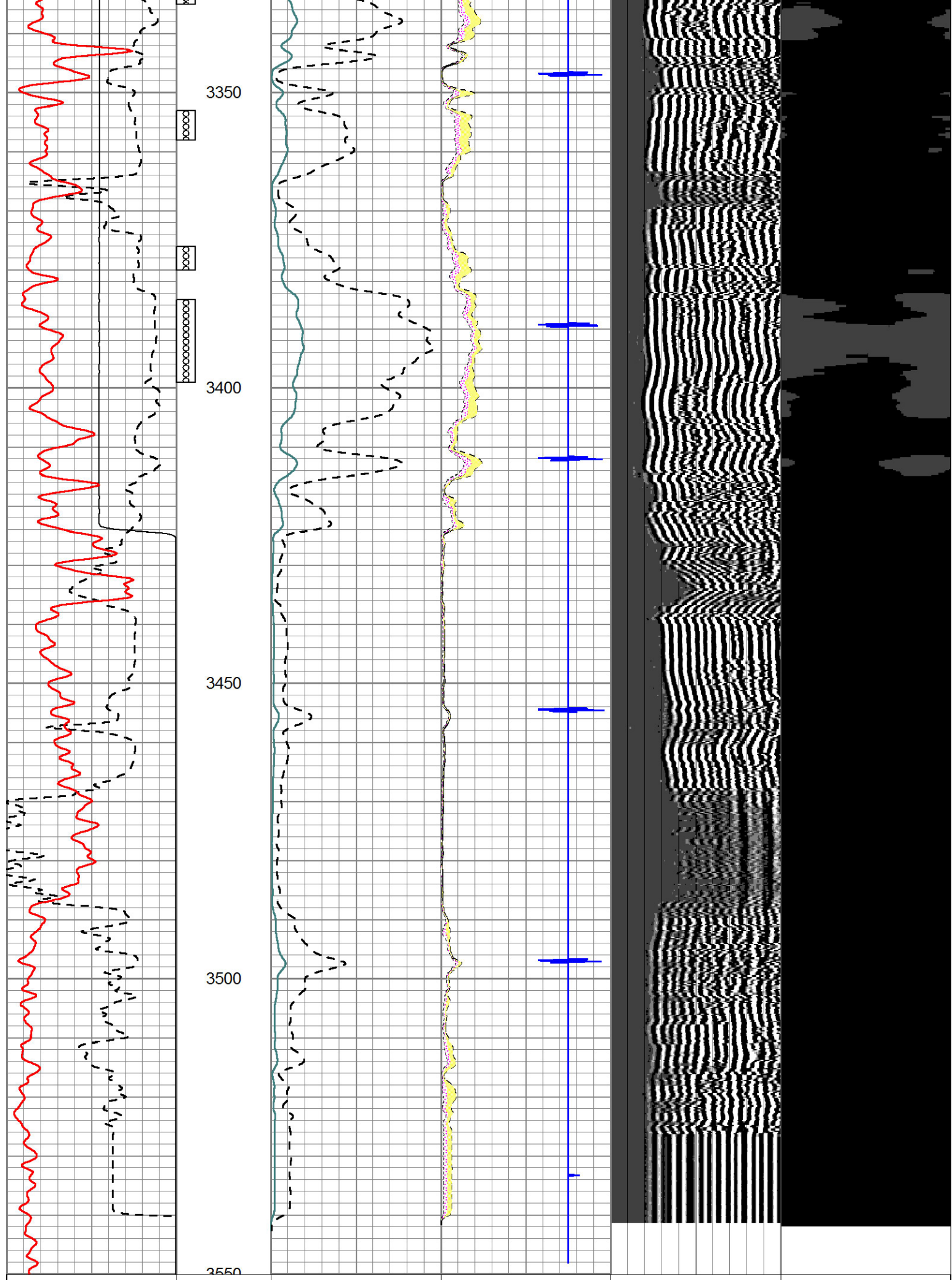




Repeat Section

Database File: sam-gary_peifier_1-31.db
 Dataset Pathname: sgrcbl/pass9
 Presentation Format: scbl
 Dataset Creation: Thu Apr 25 12:43:38 2013 by Log 7.0 B1
 Charted by: Depth in Feet scaled 1:240





| | | |
|-------|--------|-----|
| 700 | (usec) | 235 |
| ----- | | |
| LTEN | | |
| 0 | GR | 150 |
| ----- | | |

| | | | | | |
|---------------------|------|--------|-----|--------|-----|
| Amplified Amplitude | 0 | AMPMAX | 150 | | |
| ----- | | | | | |
| 0 | (mV) | 20 | 0 | AMPMIN | 150 |
| ----- | | | | | |
| | | 3 | CCL | -1 | |
| ----- | | | | | |

