



**COMPLETION
& PRODUCTION
SERVICES CO.**

**SONIC
LOG**

Company BLUERIDGE PETROLEUM CORPORATION
Well MADDY-HEATON UNIT NO. 1-5
Field WILDCAT
County NORTON
State KANSAS

Company BLUERIDGE PETROLEUM CORPORATION
Well MADDY-HEATON UNIT NO. 1-5
Field WILDCAT
County NORTON State KANSAS

Location: API # : 15-137-20642-00-00
SW - NW - NW - NE
410' FWL & 2563' FEL
SEC 5 TWP 3S RGE 24W
Permanent Datum GROUND LEVEL Elevation 2469
Log Measured From KELLY BUSHING 15 A.G.L.
Drilling Measured From KELLY BUSHING
Other Services
CNL/CDL
DIL/MEL
Elevation
K.B. 2474
D.F. 2472
G.L. 2469

Date	04/18/2013
Run Number	TWO
Depth Driller	3750
Depth Logger	3740
Bottom Logged Interval	3730
Top Log Interval	3150
Casing Driller	8 5/8" @ 260
Casing Logger	259
Bit Size	7 7/8"
Type Fluid in Hole	CHEMICAL MUD
Density / Viscosity	8.9 / 56
pH / Fluid Loss	10.5 / 6.2
Source of Sample	FLOWLINE
Rm @ Meas. Temp	2.0 @ 57 F
Rmt @ Meas. Temp	1.6 @ 57 F
Rmc @ Meas. Temp	2.4 @ 57 F
Source of Rmf / Rmc	MEASUREMENT
Rm @ BHT	1 @ 114 F
Time Circulation Stopped	2 HOURS
Time Logger on Bottom	3:30 A.M.
Maximum Recorded Temperature	114 F
Equipment Number	4010
Location	HAYS, KANSAS
Recorded By	MIKE GARRISON
Witnessed By	JIM MUSGROVE

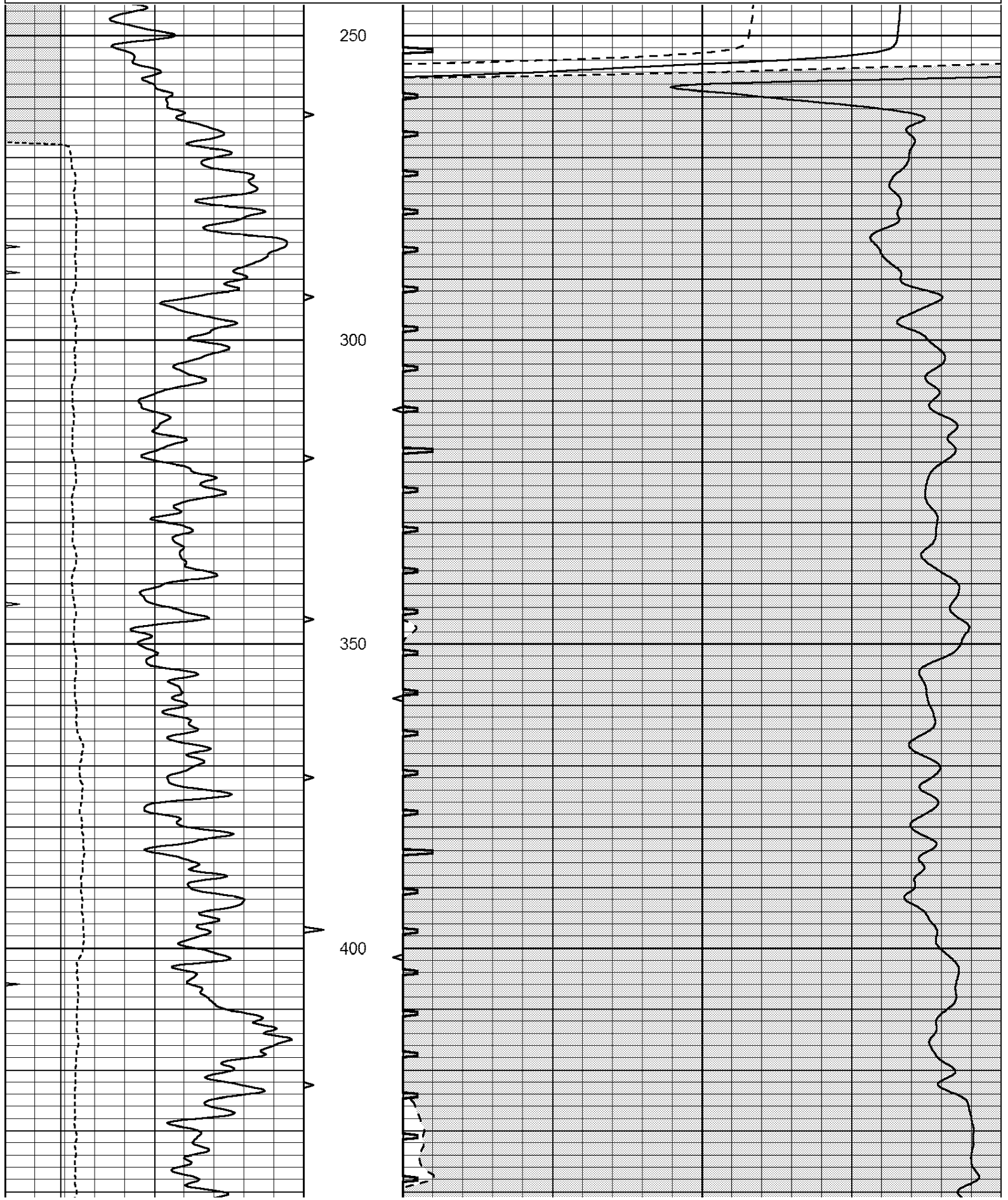
<<< Fold Here >>>

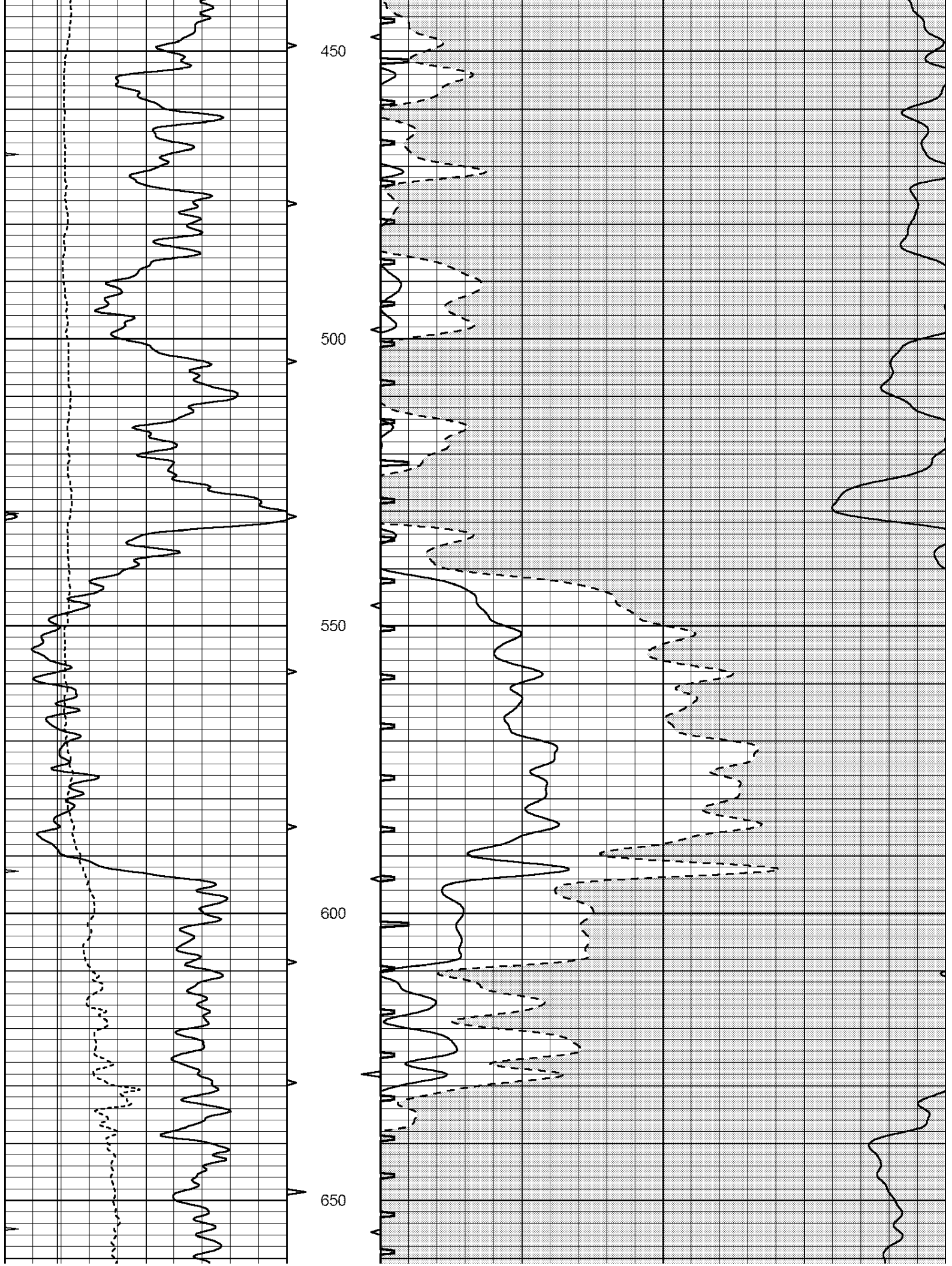
All interpretations are opinions based on inferences from electrical or other measurements and we cannot and do not guarantee the accuracy or correctness of any interpretation, and we shall not, except in the case of gross or willful negligence on our part, be liable or responsible for any loss, costs, damages, or expenses incurred or sustained by anyone resulting from any interpretation made by any of our officers, agents or employees. These interpretations are also subject to our general terms and conditions set out in our current Price Schedule.

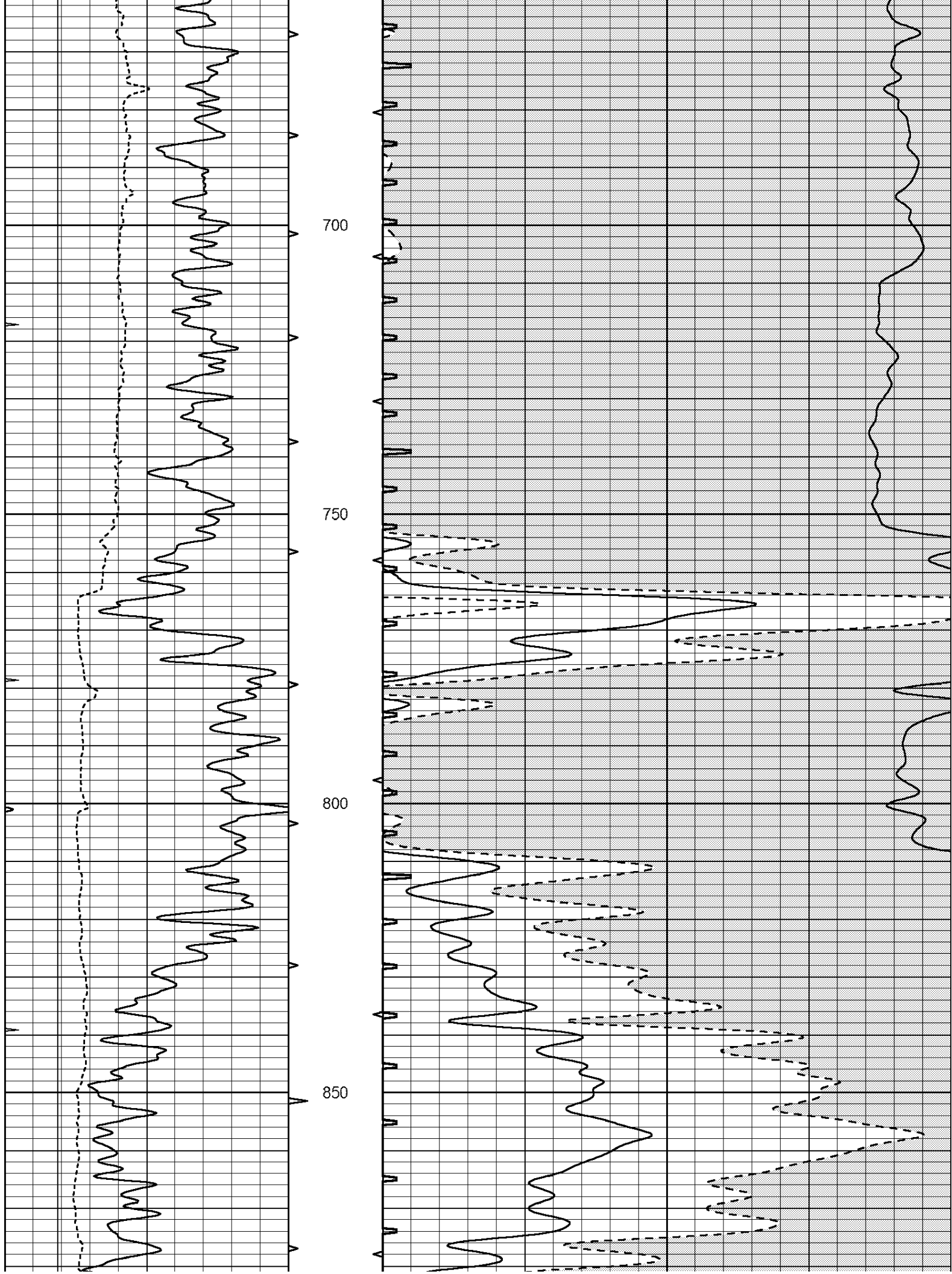
Comments

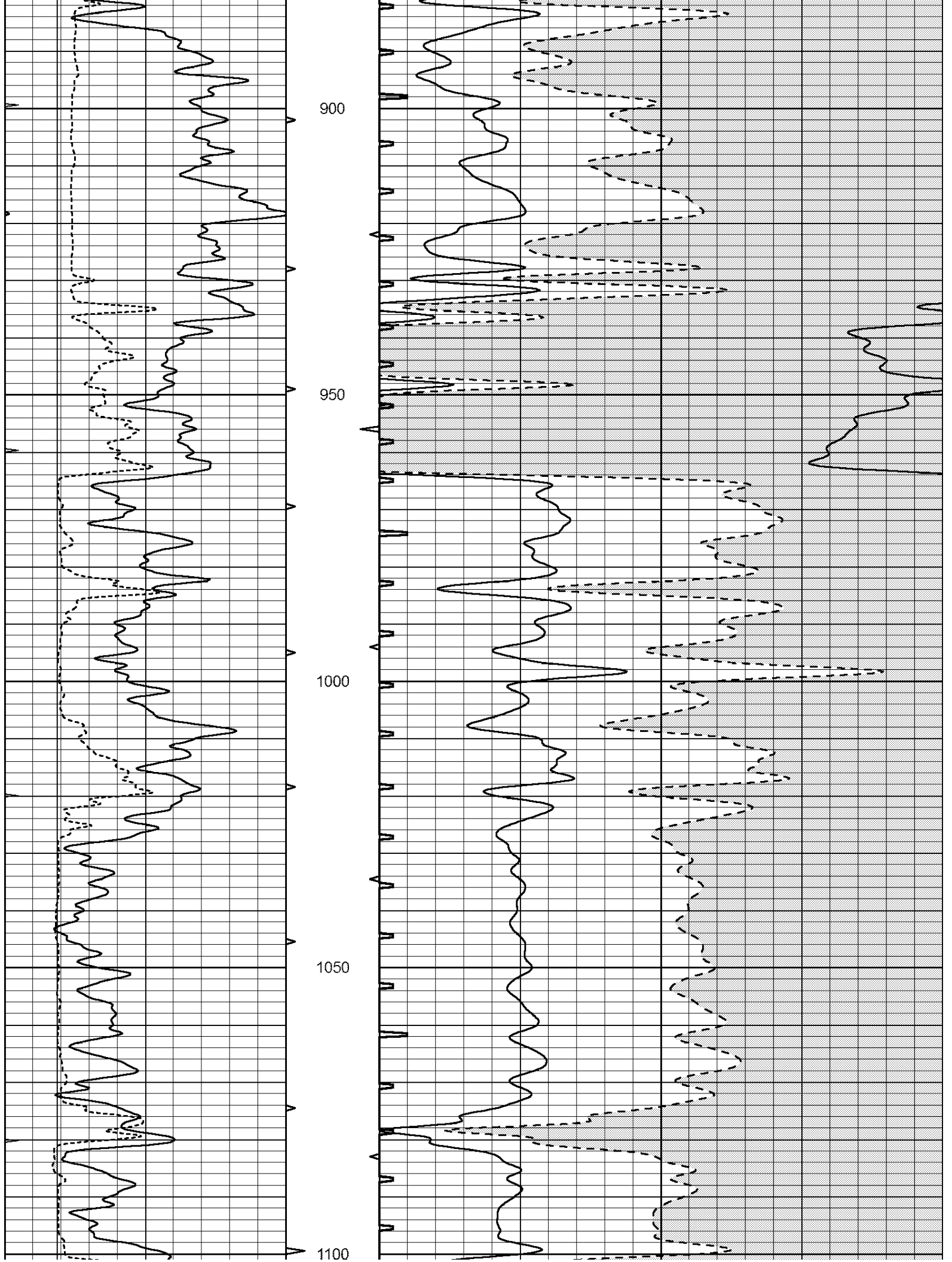
THANK YOU FOR USING NABORS, HAYS, KS. (785) 628-6395
DIRECTIONS:
NORTON, KS- 8 WEST, 1/8 SOUTH, WEST INTO

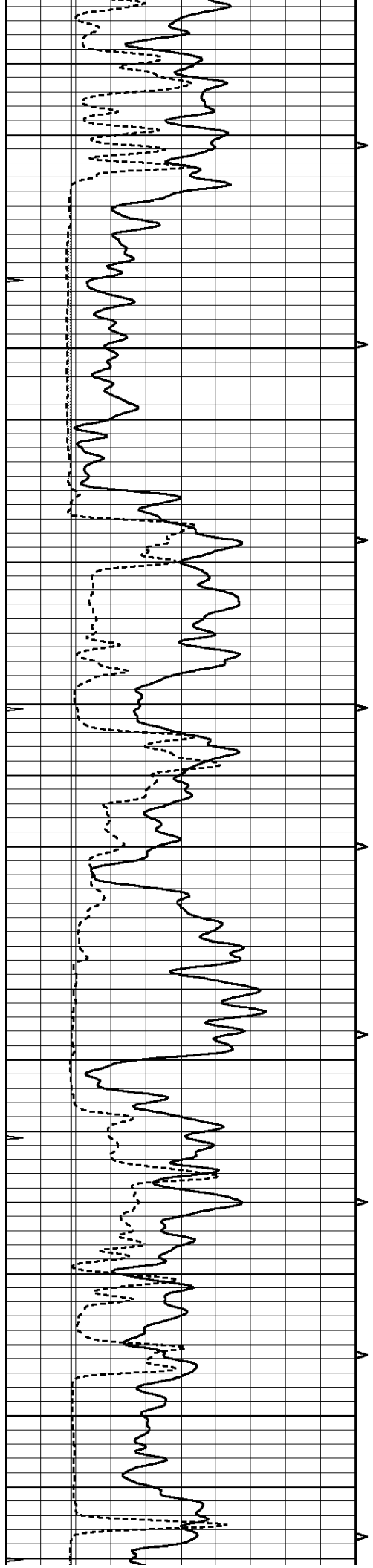
0	GAMMA RAY (GAPI)	150	ABHV	140	DELTA TIME (usec/ft)	40
6	CALIPER (in)	16	10 (ft3) 0	30	SONIC POROSITY (pu)	-10
0	MINMK	20	TBHV	0	ITT (msec)	20
			0 (ft3) 10			









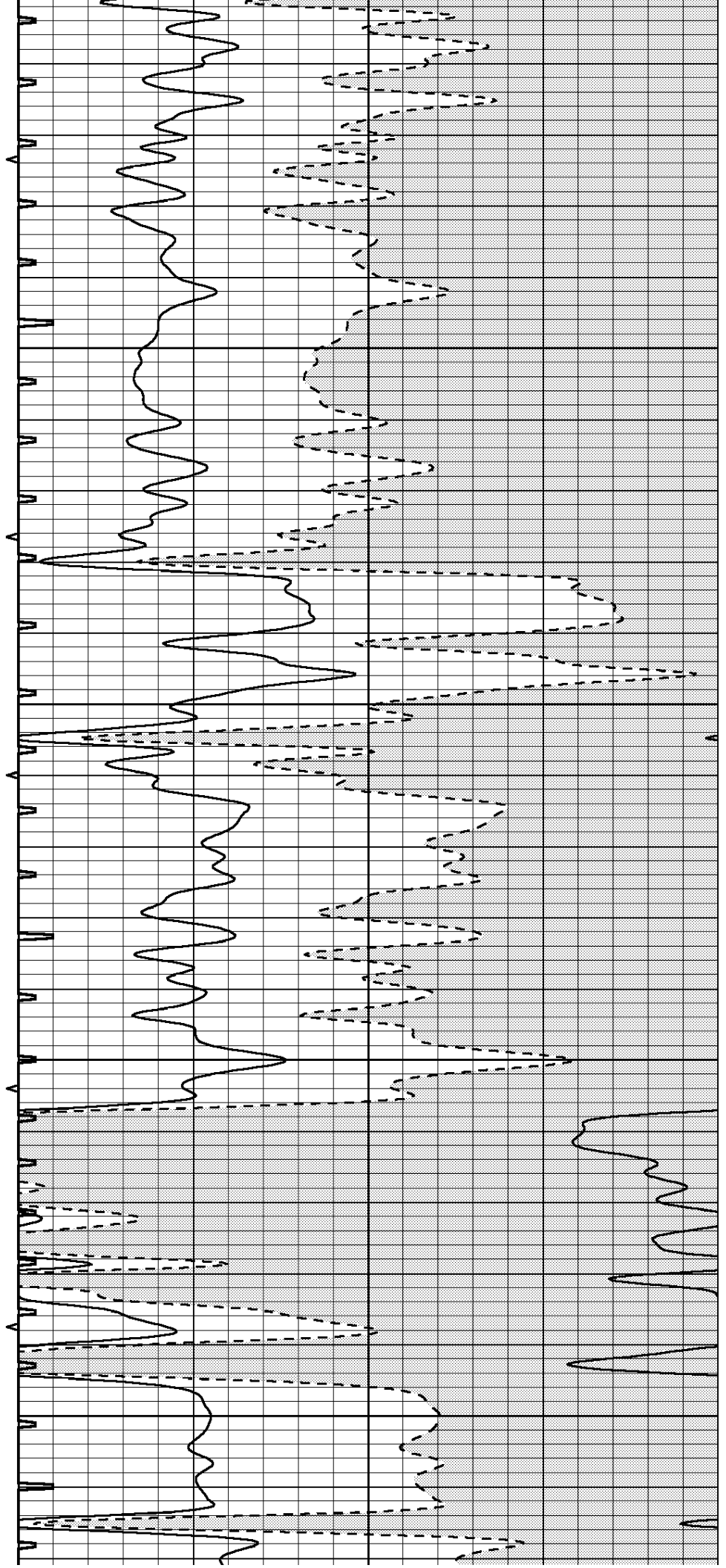


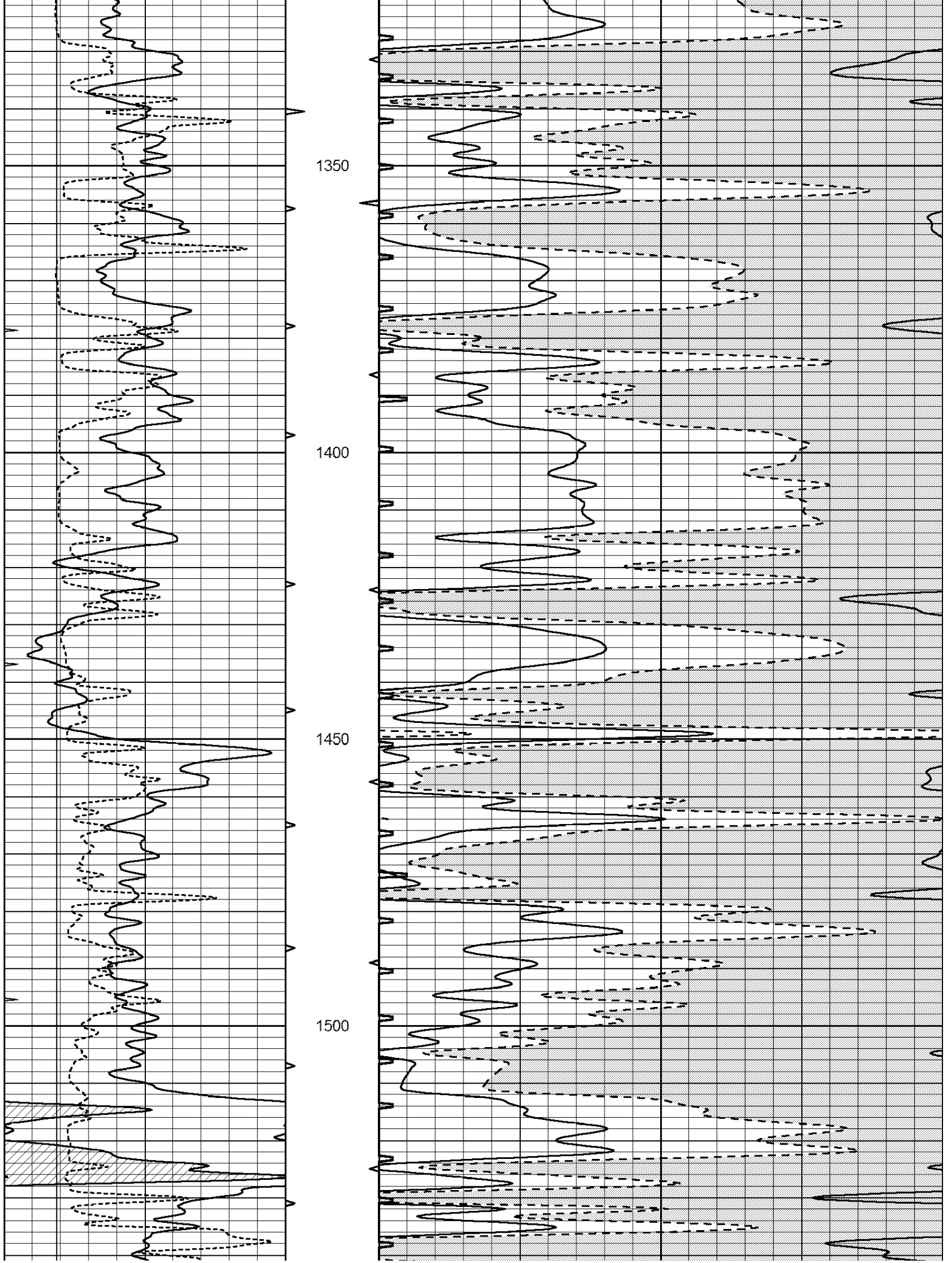
1150

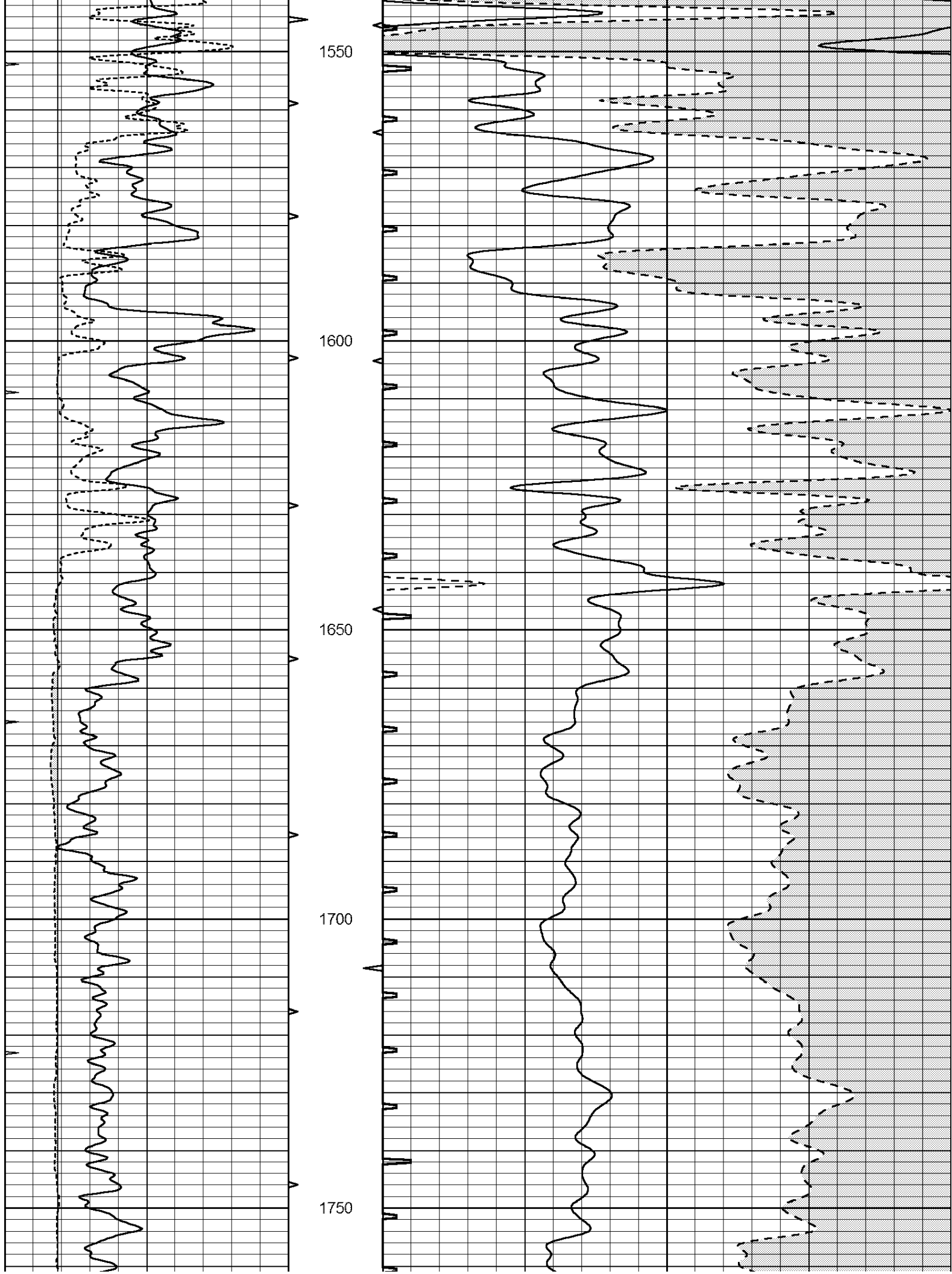
1200

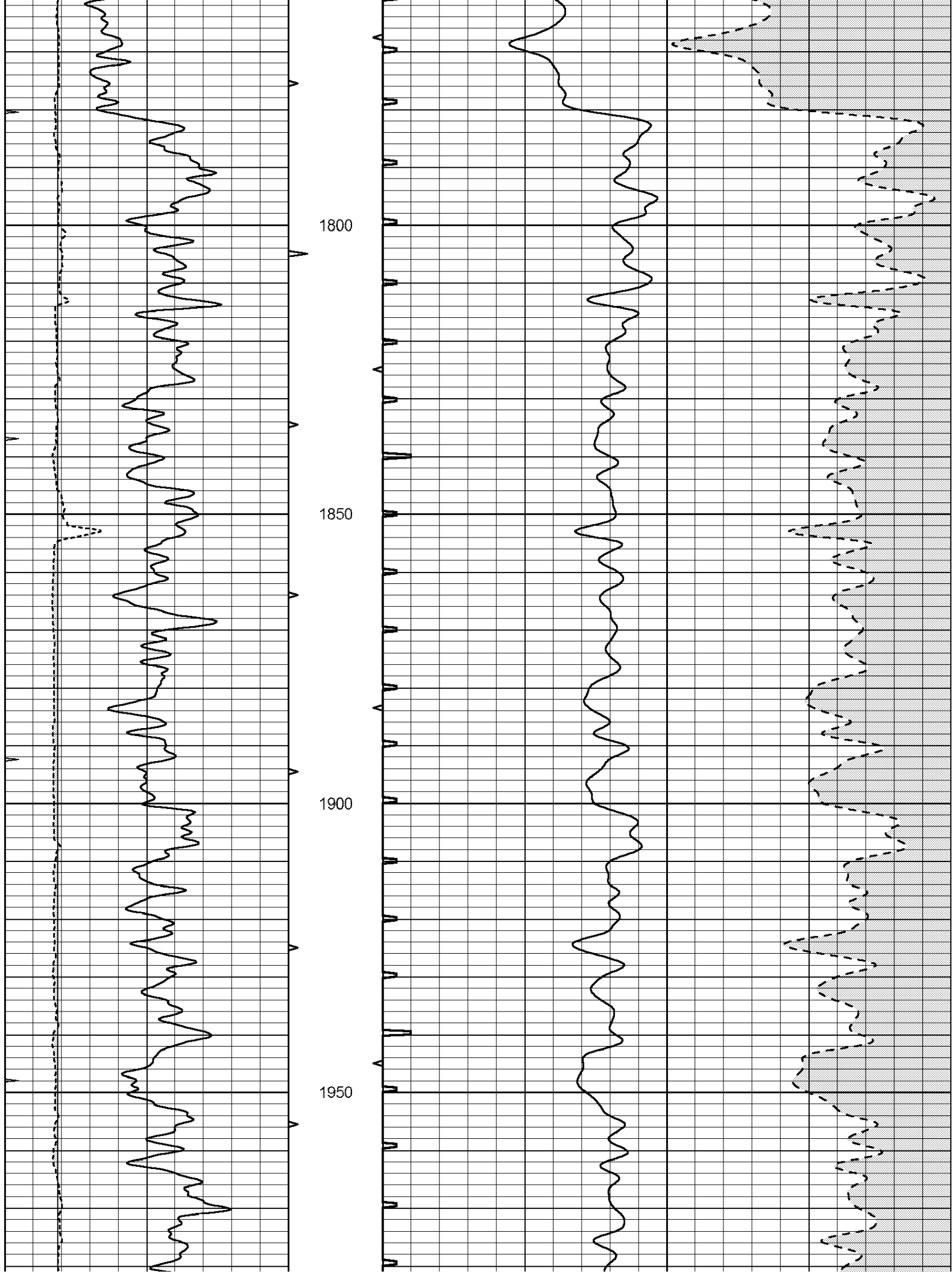
1250

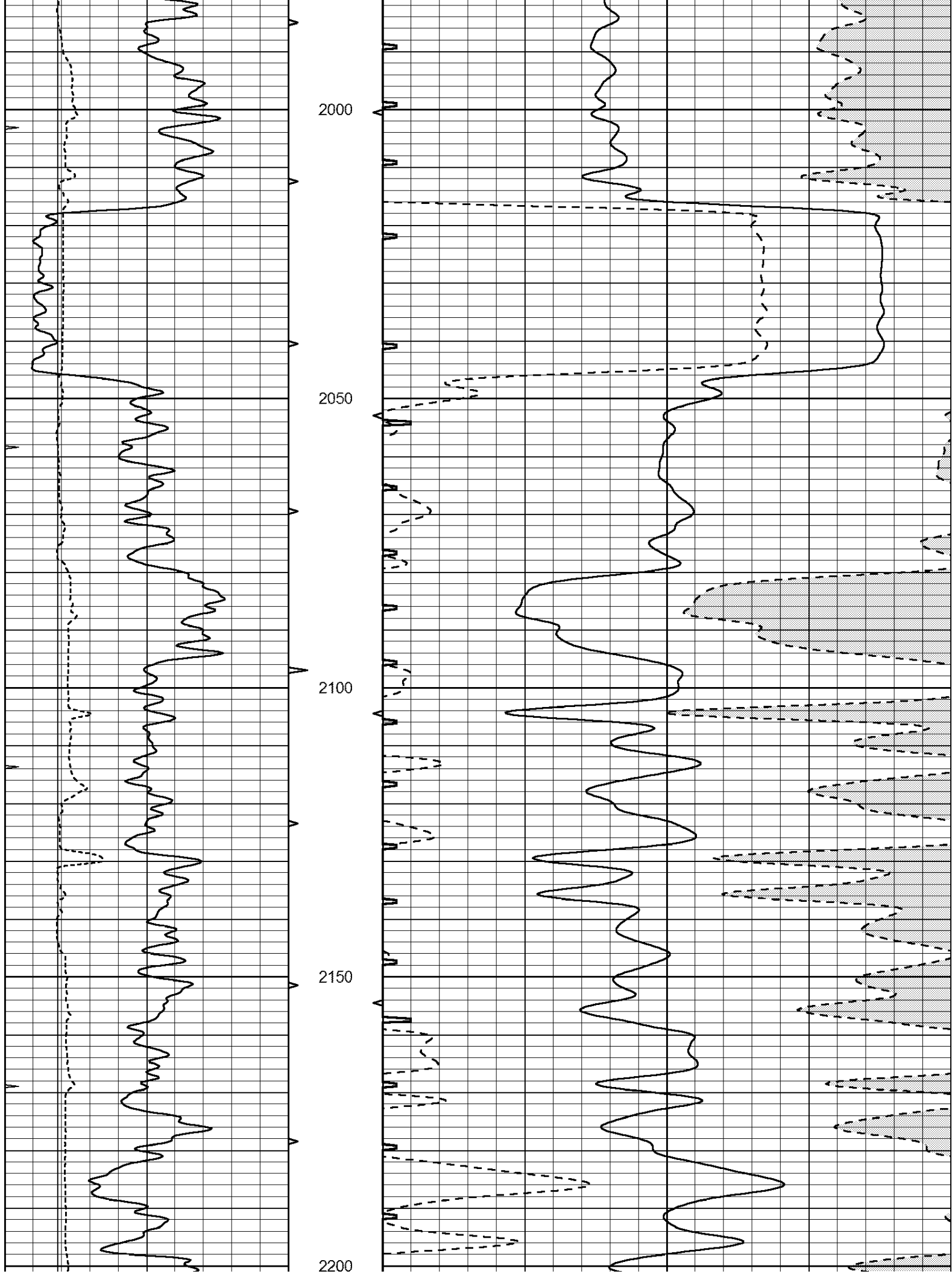
1300

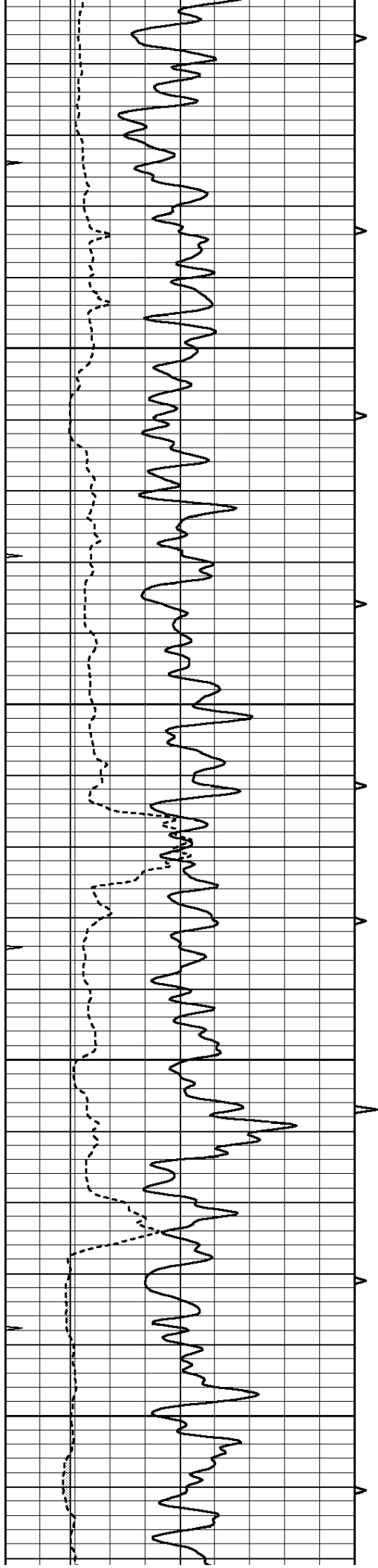










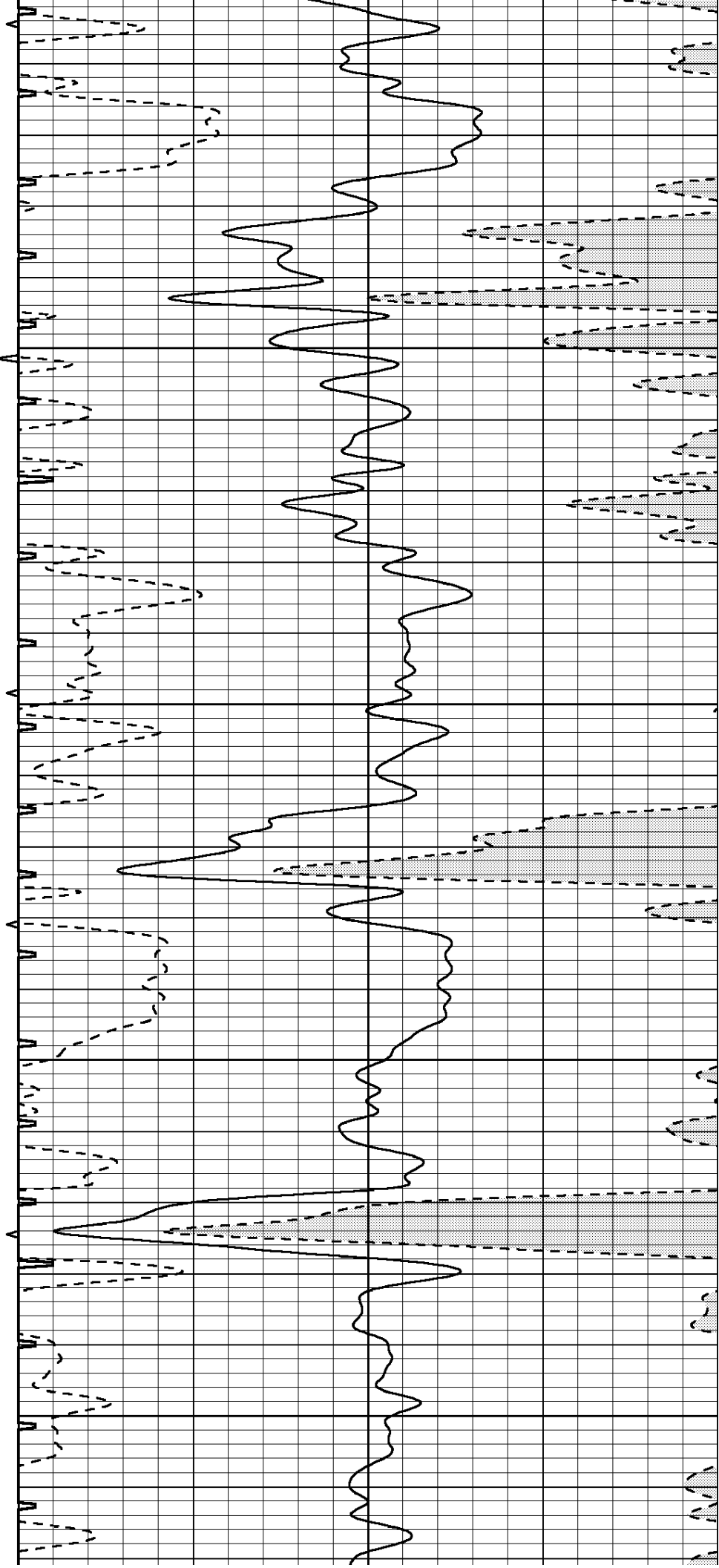


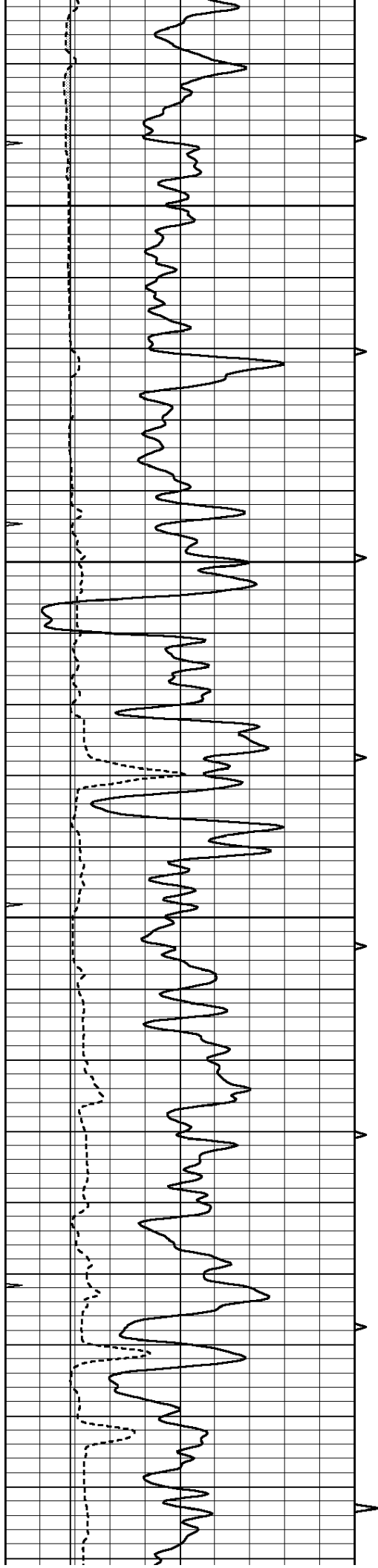
2250

2300

2350

2400



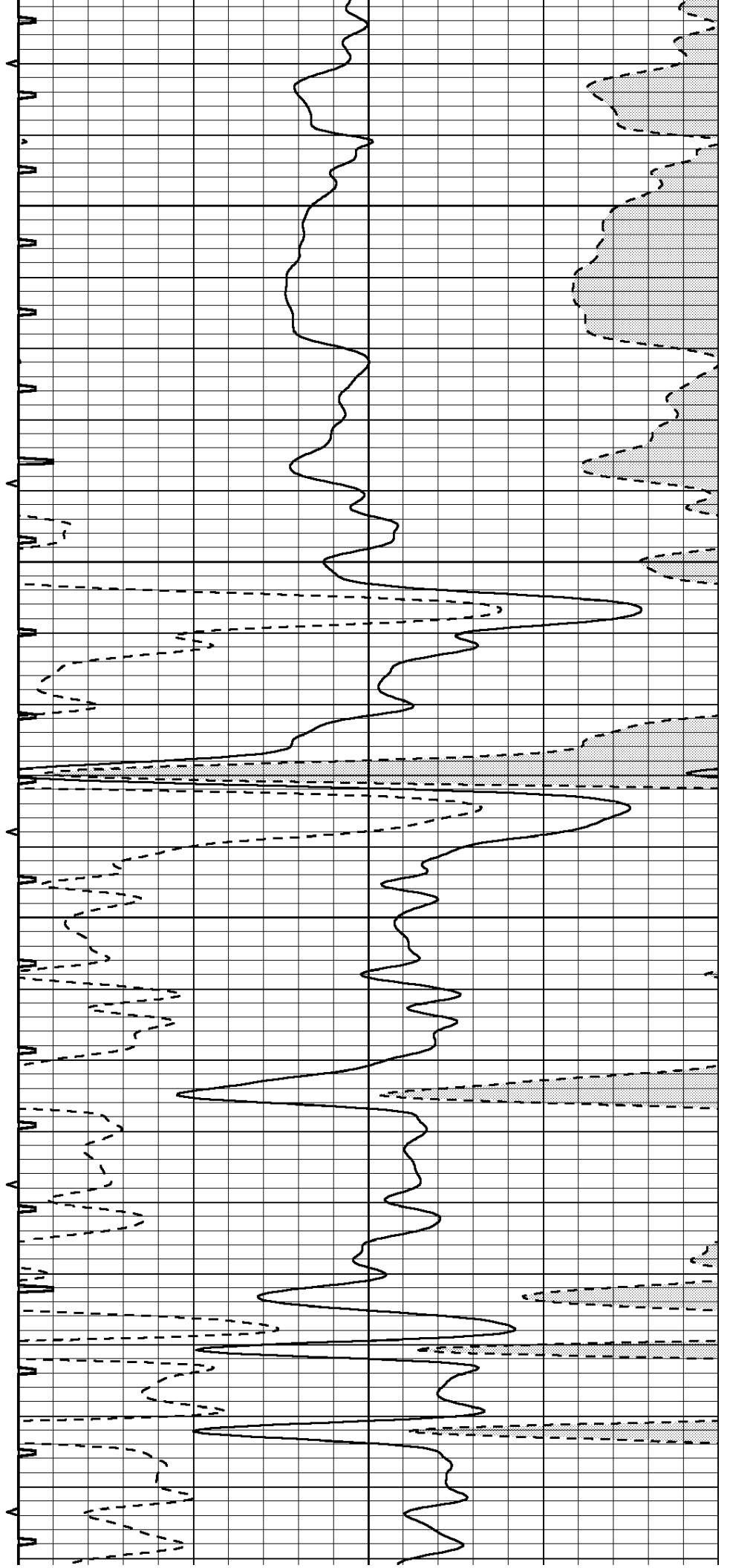


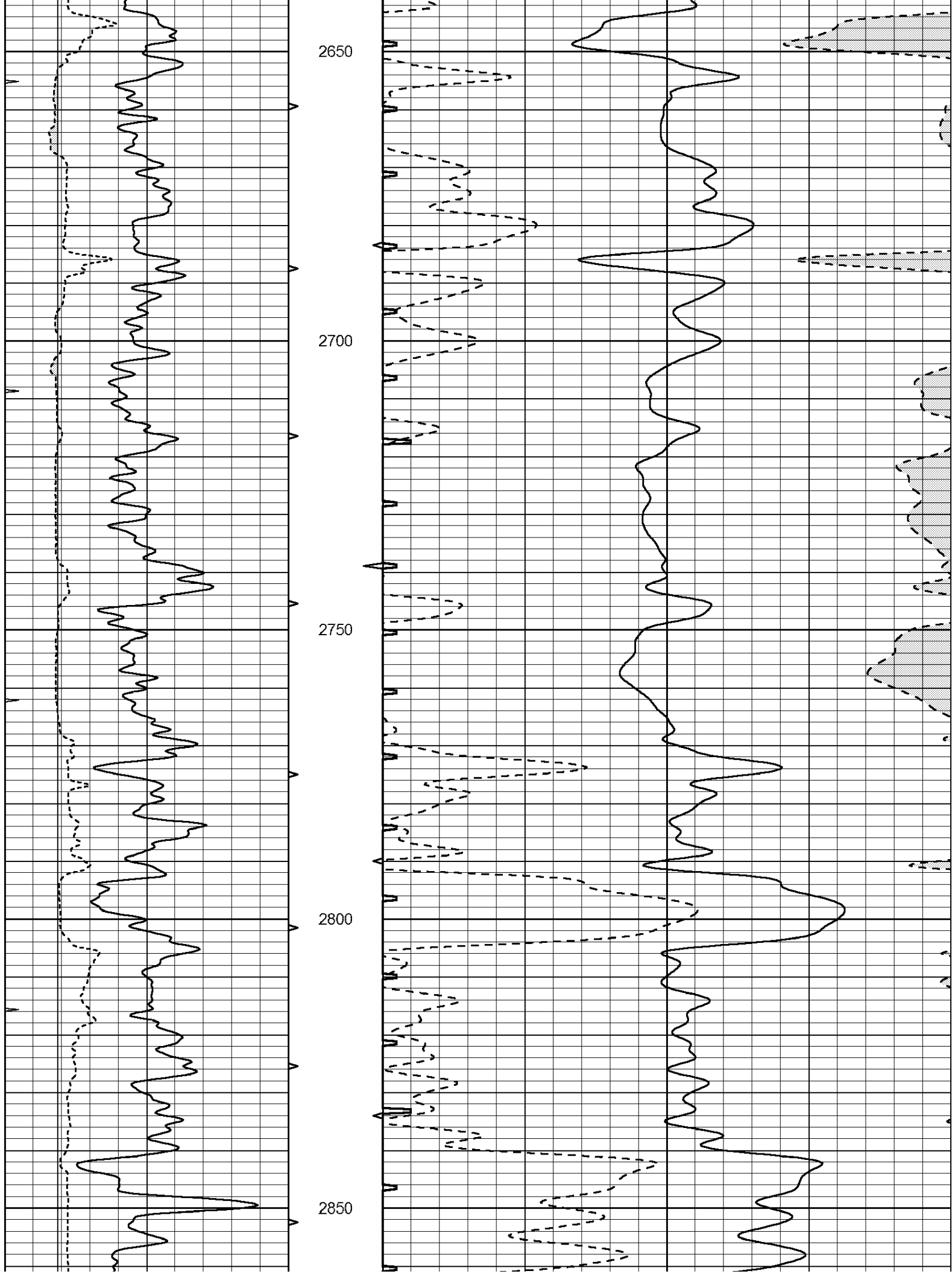
2450

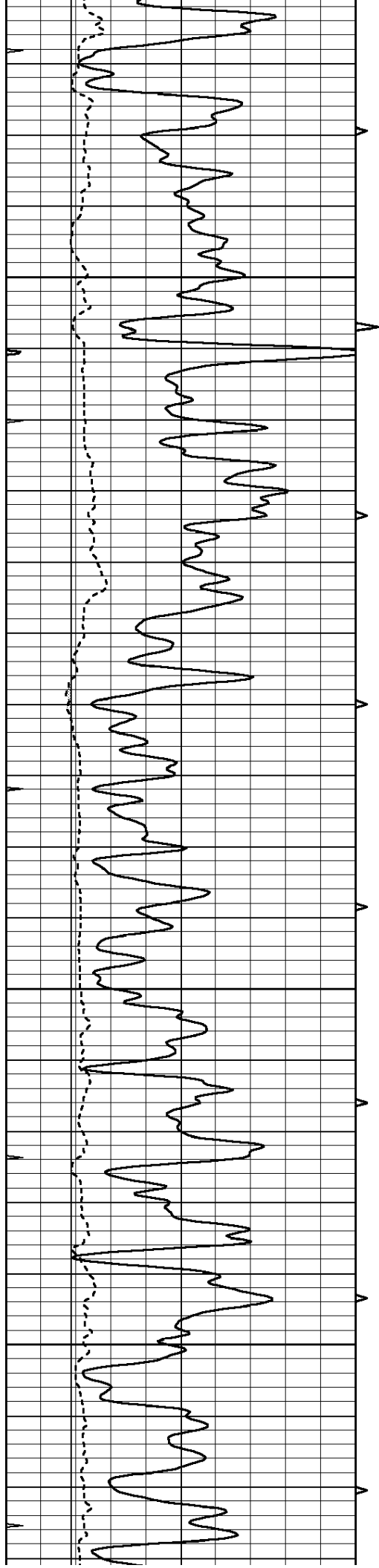
2500

2550

2600





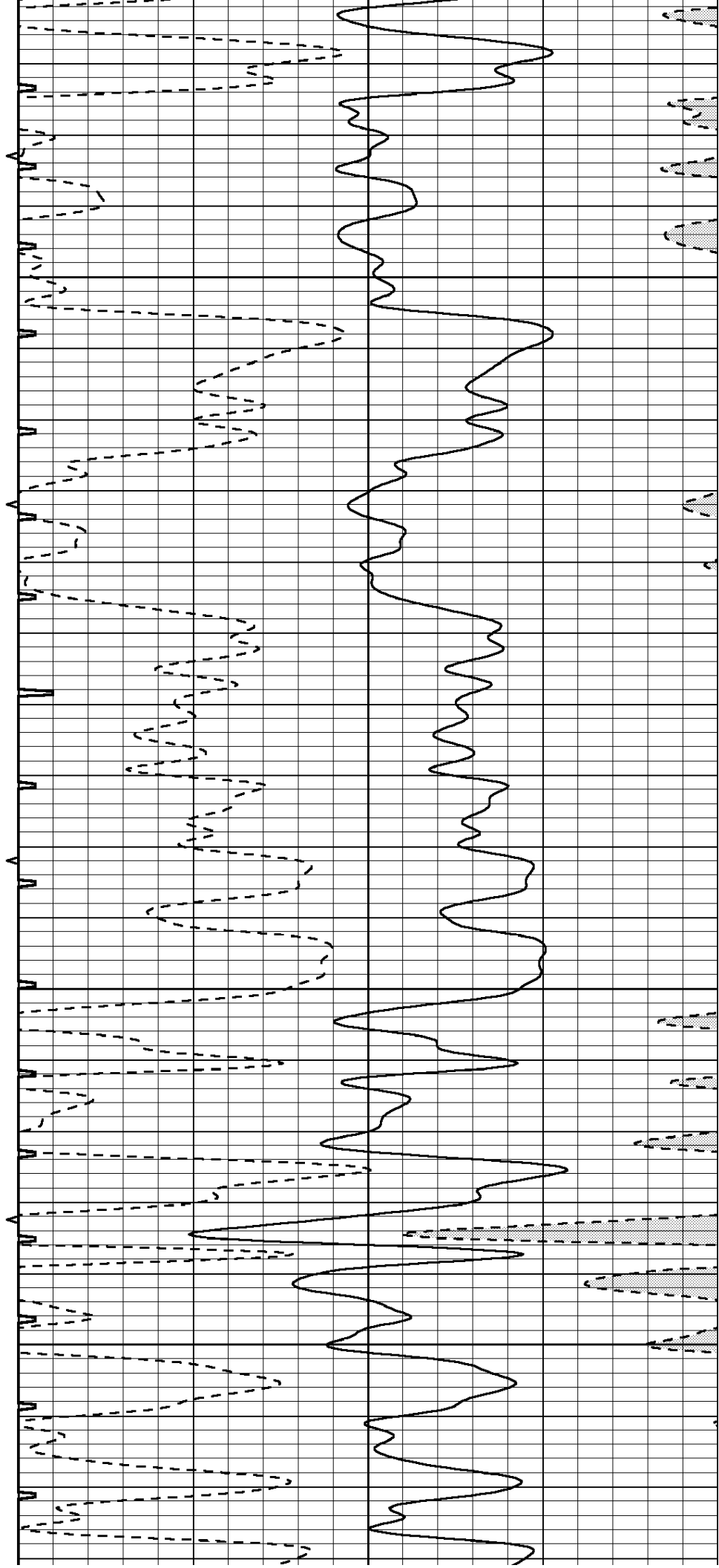


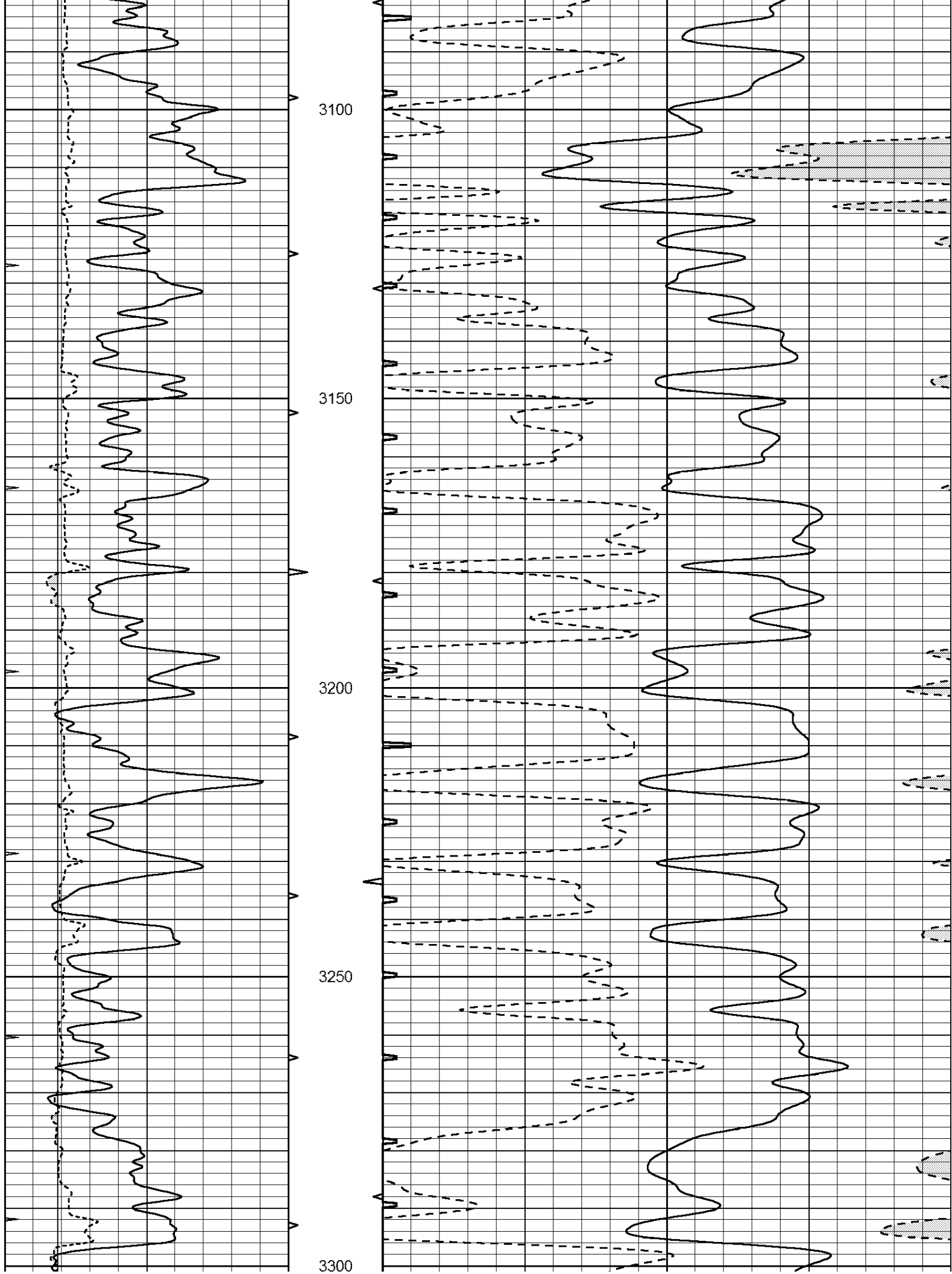
2900

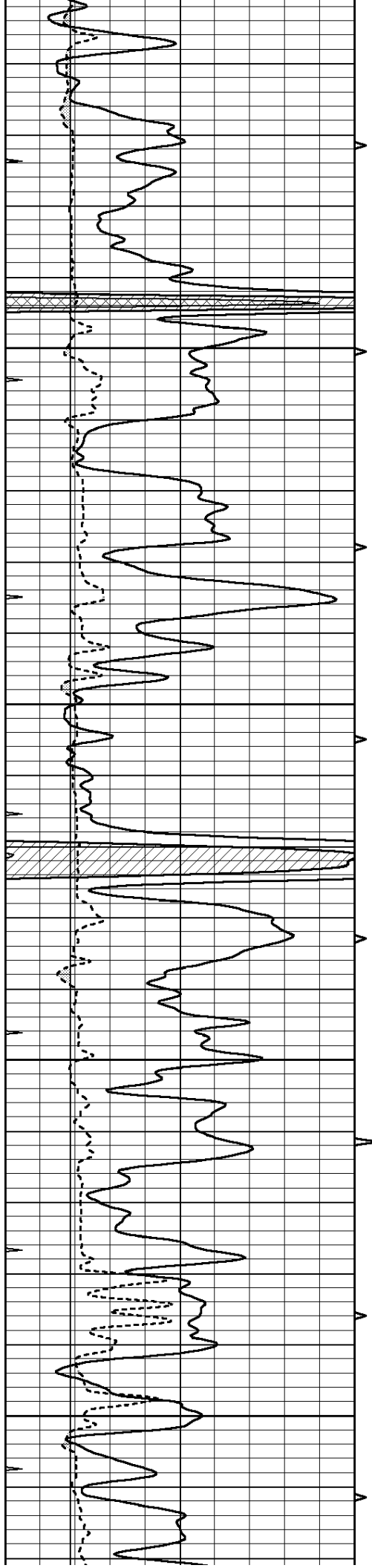
2950

3000

3050





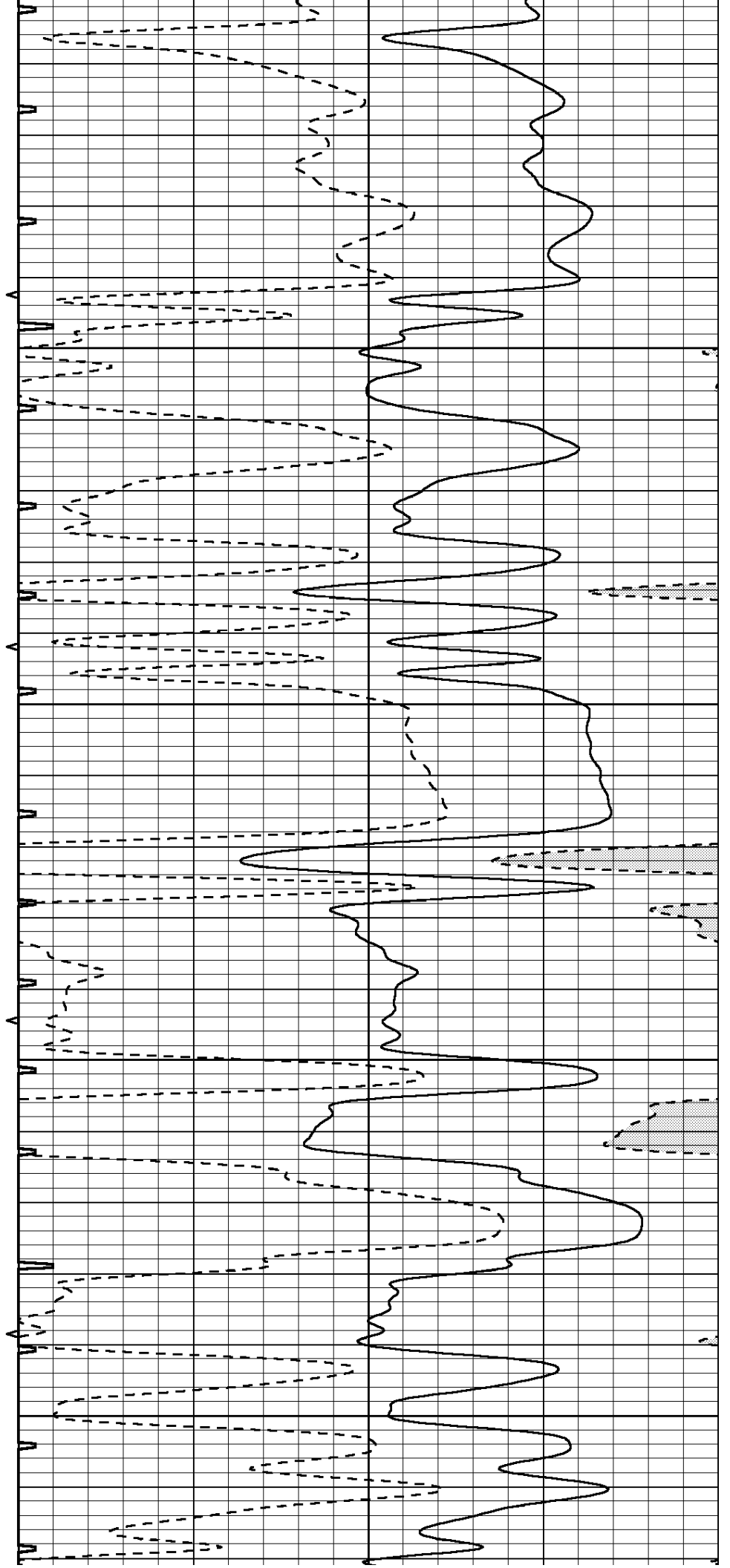


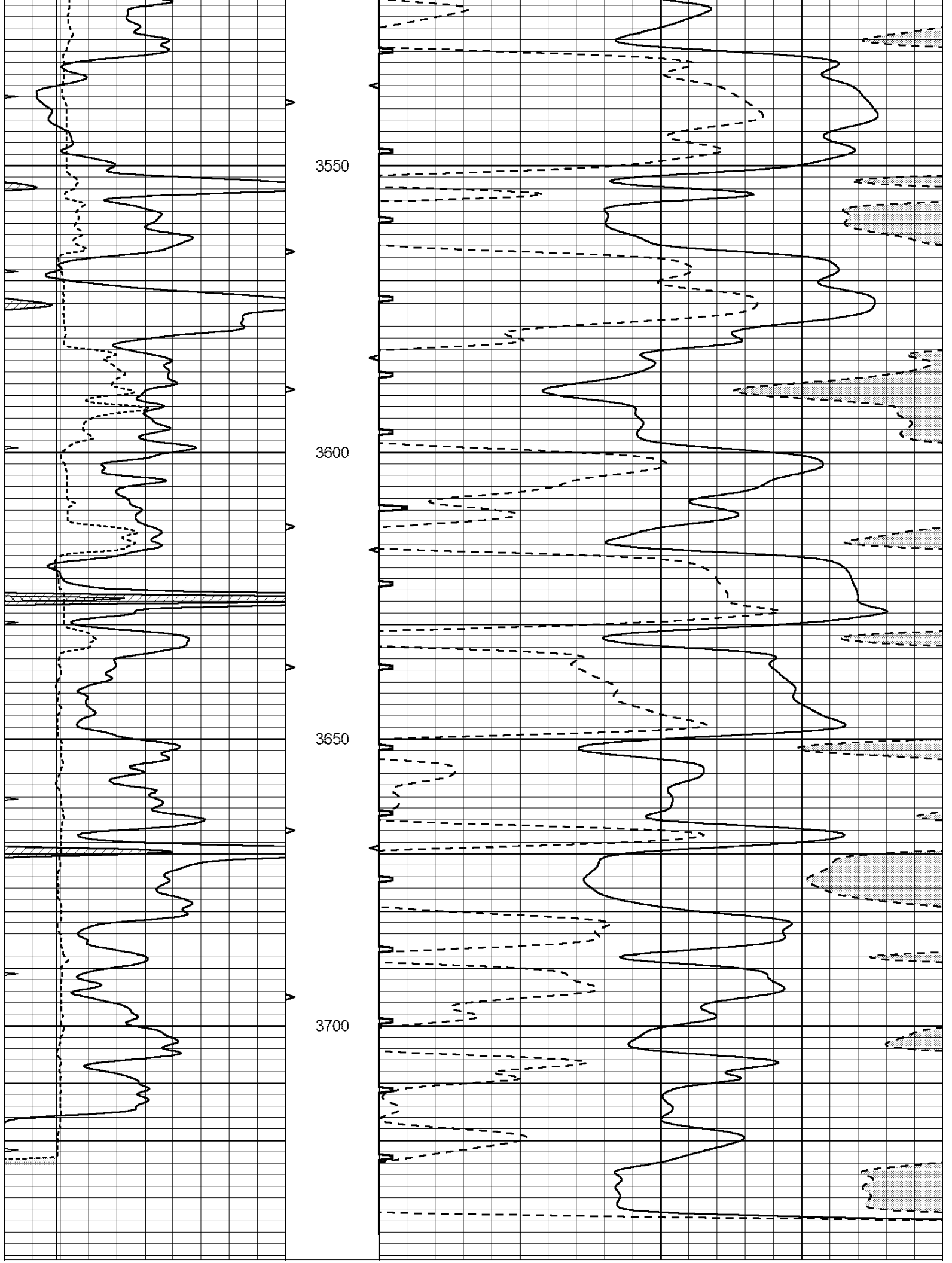
3350

3400

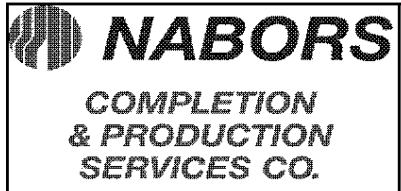
3450

3500





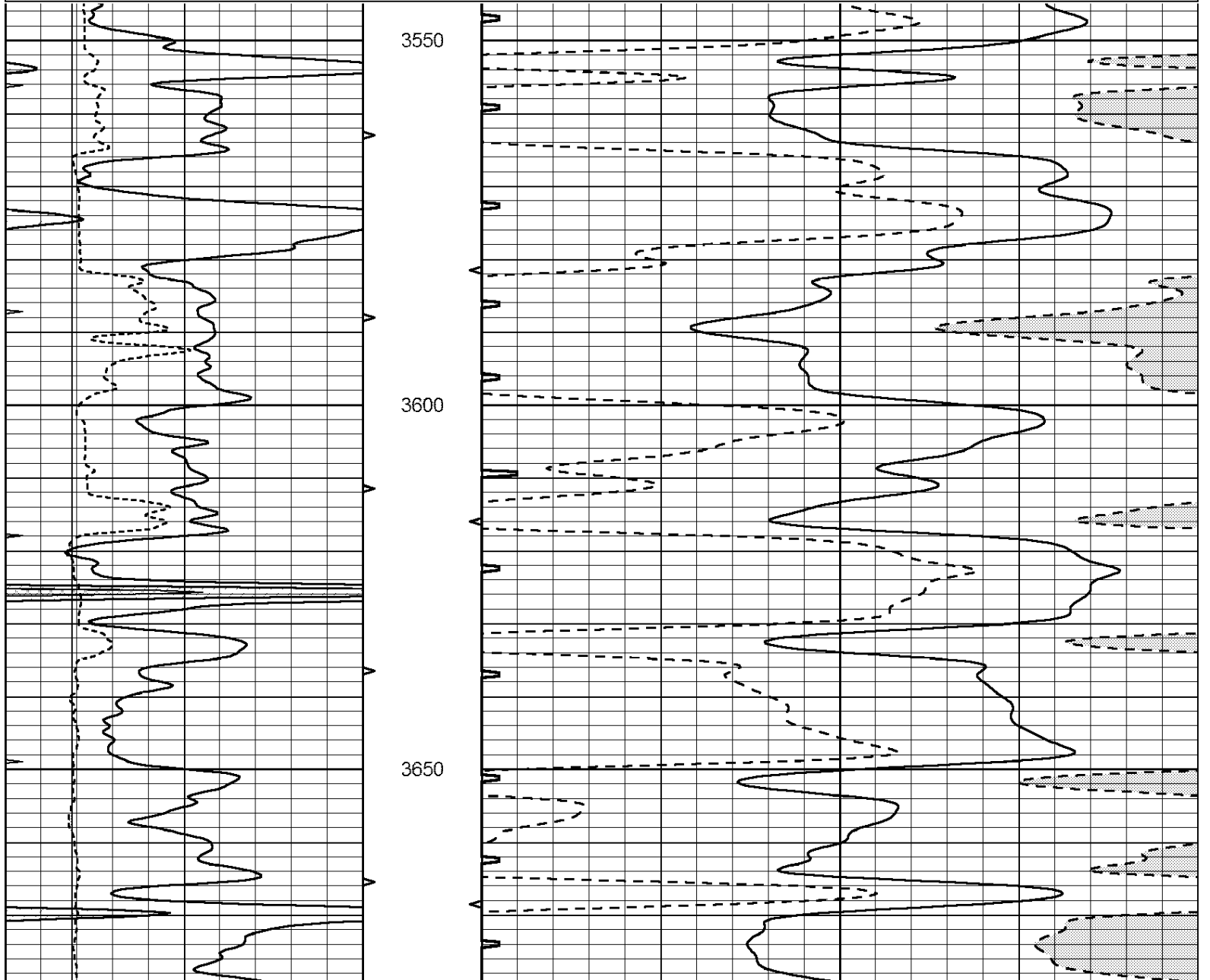
0	GAMMA RAY (GAPI)	150	ABHV	140	DELTA TIME (usec/ft)	40	
6	CALIPER (in)	16	10 (ft3)	0	30	SONIC POROSITY (pu)	-10
0	MINMK	20	TBHV	0	ITT (msec)	20	
			0 (ft3)	10			

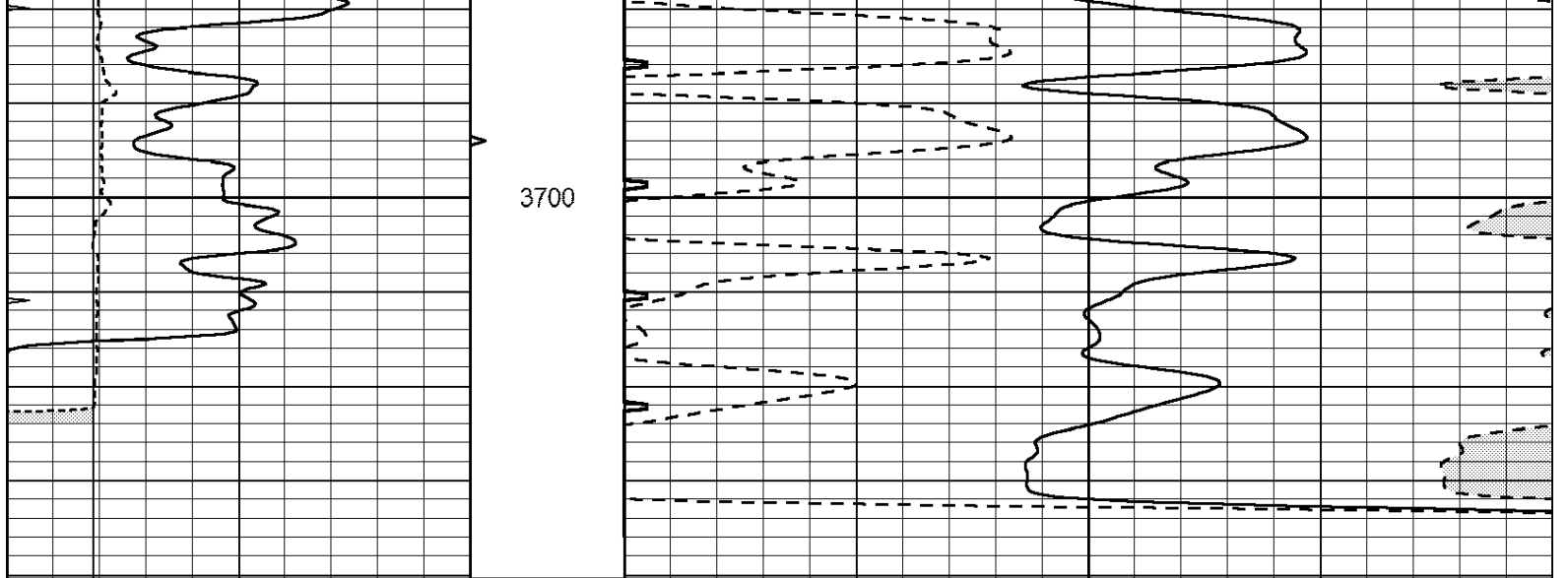


REPEAT SECTION

Database File: 010873dildn.db
 Dataset Pathname: pass5.1
 Presentation Format: slt
 Dataset Creation: Thu Apr 18 06:38:53 2013 by Calc Open-Cased 090629
 Charted by: Depth in Feet scaled 1:240

0	GAMMA RAY (GAPI)	150	ABHV	140	DELTA TIME (usec/ft)	40	
6	CALIPER (in)	16	10 (ft3)	0	30	SONIC POROSITY (pu)	-10
0	MINMK	20	TBHV	0	ITT (msec)	20	
			0 (ft3)	10			





0	GAMMA RAY (GAPI)	150	ABHV	140	DELTA TIME (usec/ft)	40
6	CALIPER (in)	16	10 (ft3) 0	30	SONIC POROSITY (pu)	-10
0	MINMK	20	TBHV	0	ITT (msec)	20
			0 (ft3) 10			