



Pioneer Energy Services

Dual Compensated Porosity Log

15-007-24,031-00-00

API No.

Company **Indian Oil Company, Inc.**
 Well **Helen Mae #3**
 Field **Stranathan**
 County **Barber** State **Kansas**

Location **SW SE SE
330' FSL & 990' FEL**
 Sec: **10** Twp: **35S** Rge: **12W**

Ground Level **Elevation 1382**
 Kelly Bushing **11 Ft. Above Perm. Datum**
 Kelly Bushing

Other Services
DIL
 Elevation
 K.B. 1393
 D.F. 1382
 G.L. 1382

Date	6/10/2013
Run Number	One
Type Log	CNL / CDL
Depth Driller	5100
Depth Logger	5099
Bottom Logged Interval	5078
Top Logged Interval	4100
Type Fluid In Hole	Chemical
Salinity, PPM CL	4000
Density Level	9.5
Level	Full
Max. Rec. Temp. F	127
Operating Rig Time	2 1/2 Hours
Equipment -- Location	108 Hays
Recorded By	J. Long
Witnessed By	Scott Alberg

Borehole Record				Casing Record			
Run No.	Bit	From	To	Size	Wgt.	From	To
1	12.25	00	778	8.625	24#	00	778
2	7.875	778	5100				

<<< Fold Here >>>

All interpretations are opinions based on inferences from electrical or other measurements and we cannot and do not guarantee the accuracy or correctness of any interpretation, and we shall not, except in the case of gross or willful negligence on our part, be liable or responsible for any loss, costs, damages, or expenses incurred or sustained by anyone resulting from any interpretation made by any of our officers, agents or employees. These interpretations are also subject to our general terms and conditions set out in our current Price Schedule.

Comments

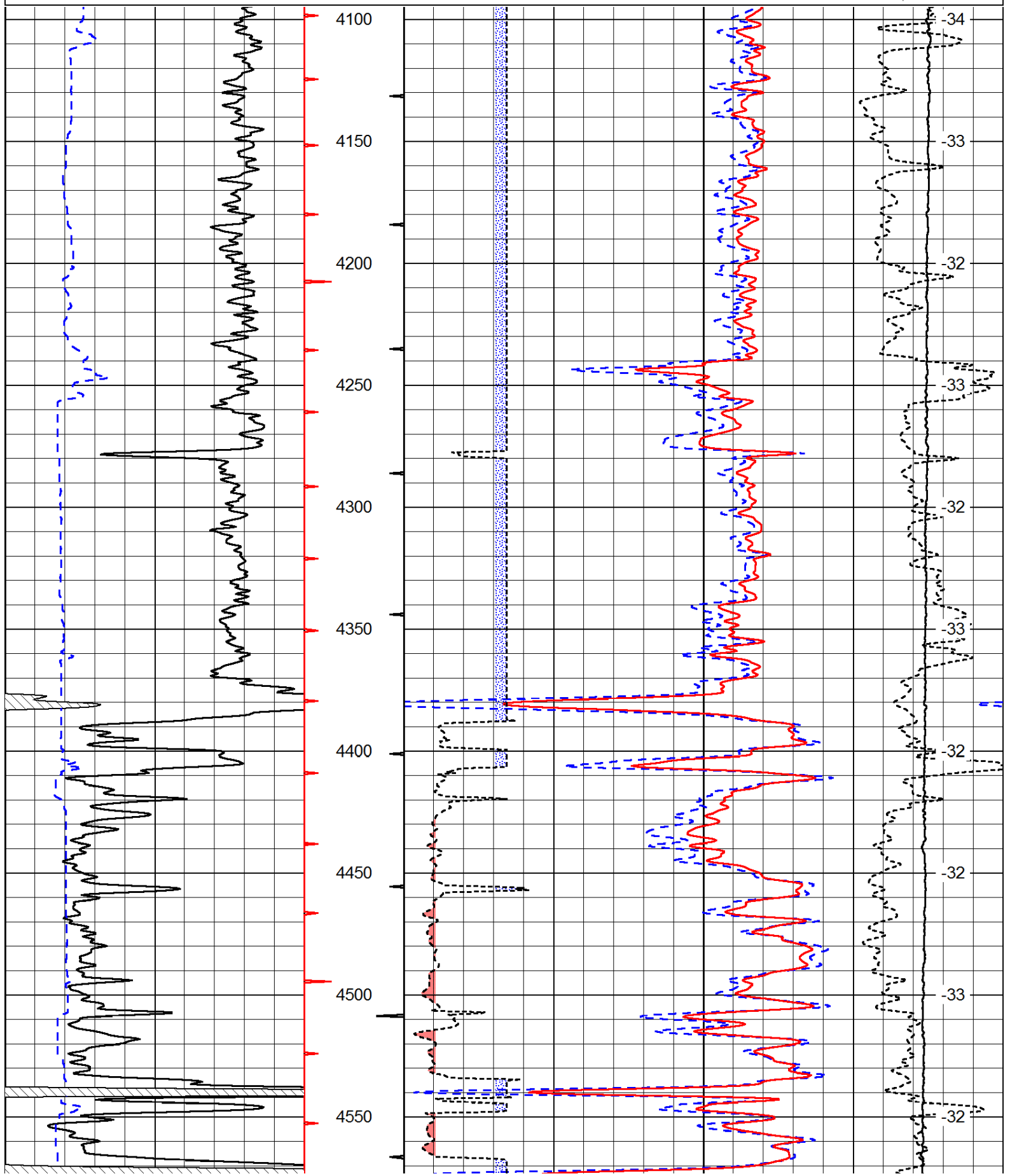
Thank you for using Pioneer Energy Services
www.pioneerres.com
 785 625 3858

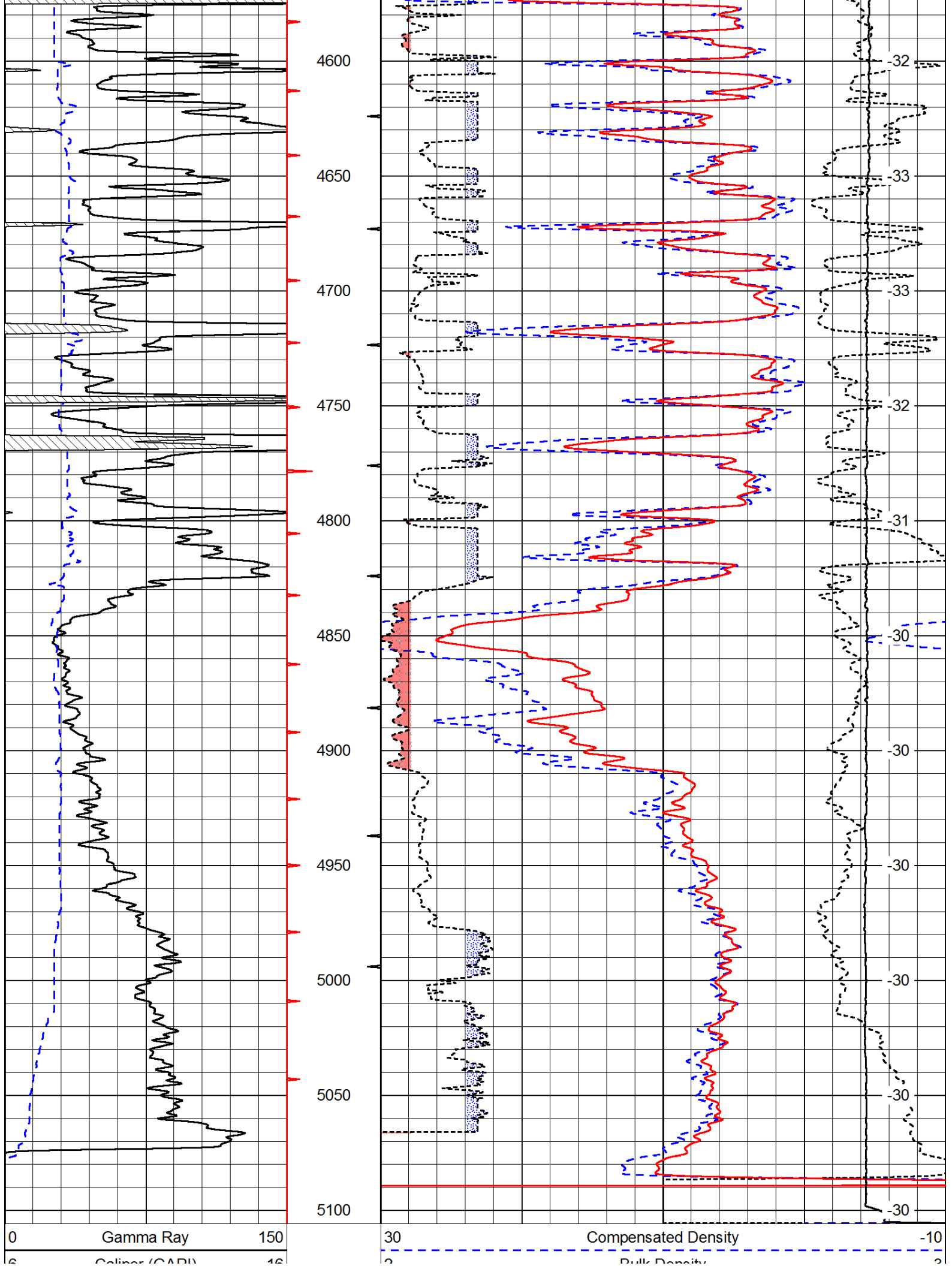
Hardtner, 2 1/2 East to Roundup Road, 1/2 South, West Into

Database File: c:\warrior\data\indian oil_helen mae #3\indianoil_helenmae_3hd.db
 Dataset Pathname: dil/indstck
 Presentation Format: cdl
 Dataset Creation: Mon Jun 10 22:39:47 2013
 Charted by: Depth in Feet scaled 1:600

0	Gamma Ray	150
6	Caliper (GAPI)	16

30	Compensated Density		-10
2	Bulk Density		3
15000	Line Tension		0
2.625	DGA	3.425	-0.25
			Correction
			0.25
LSPD			





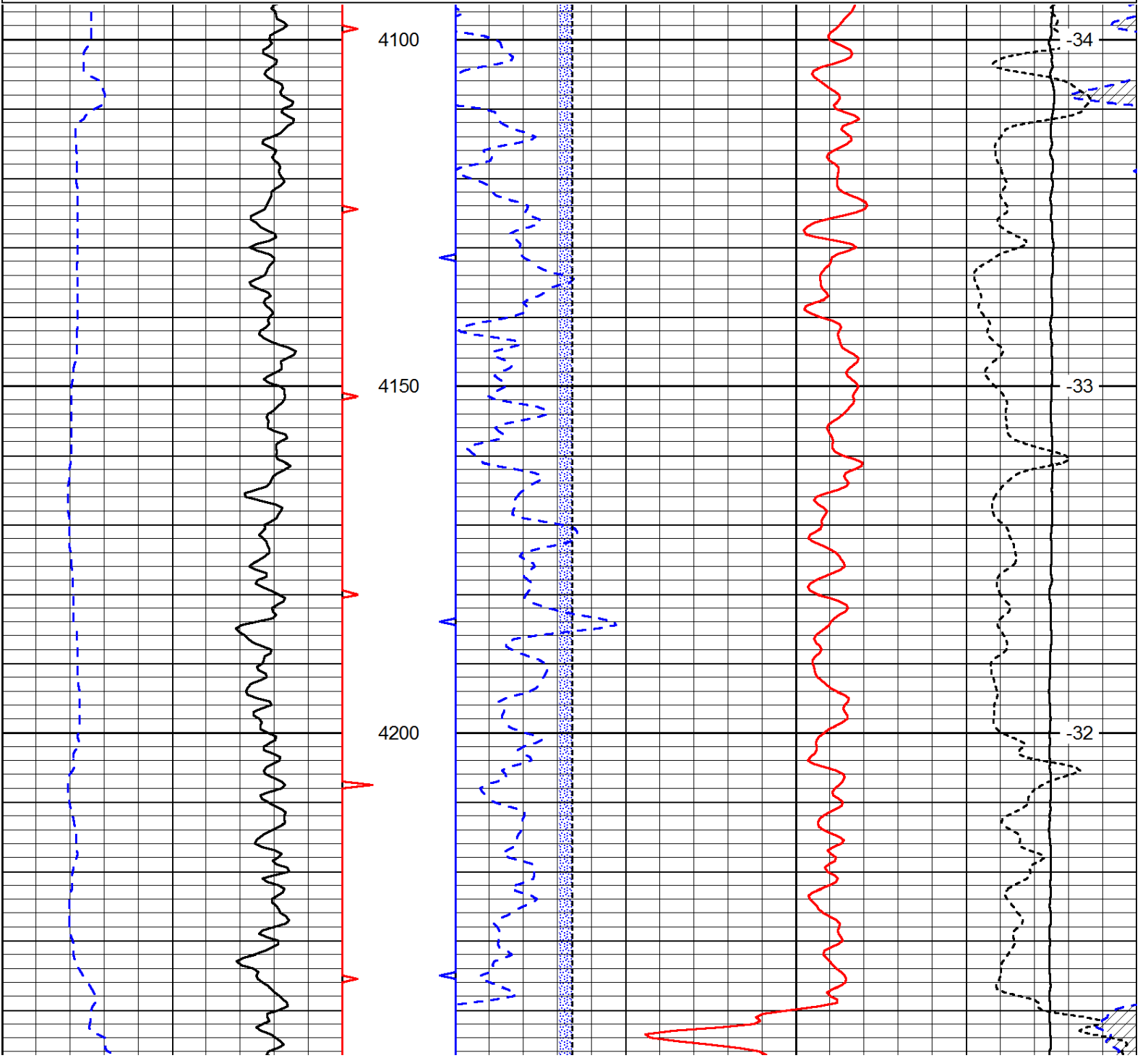
Caliper (GAPI) 10

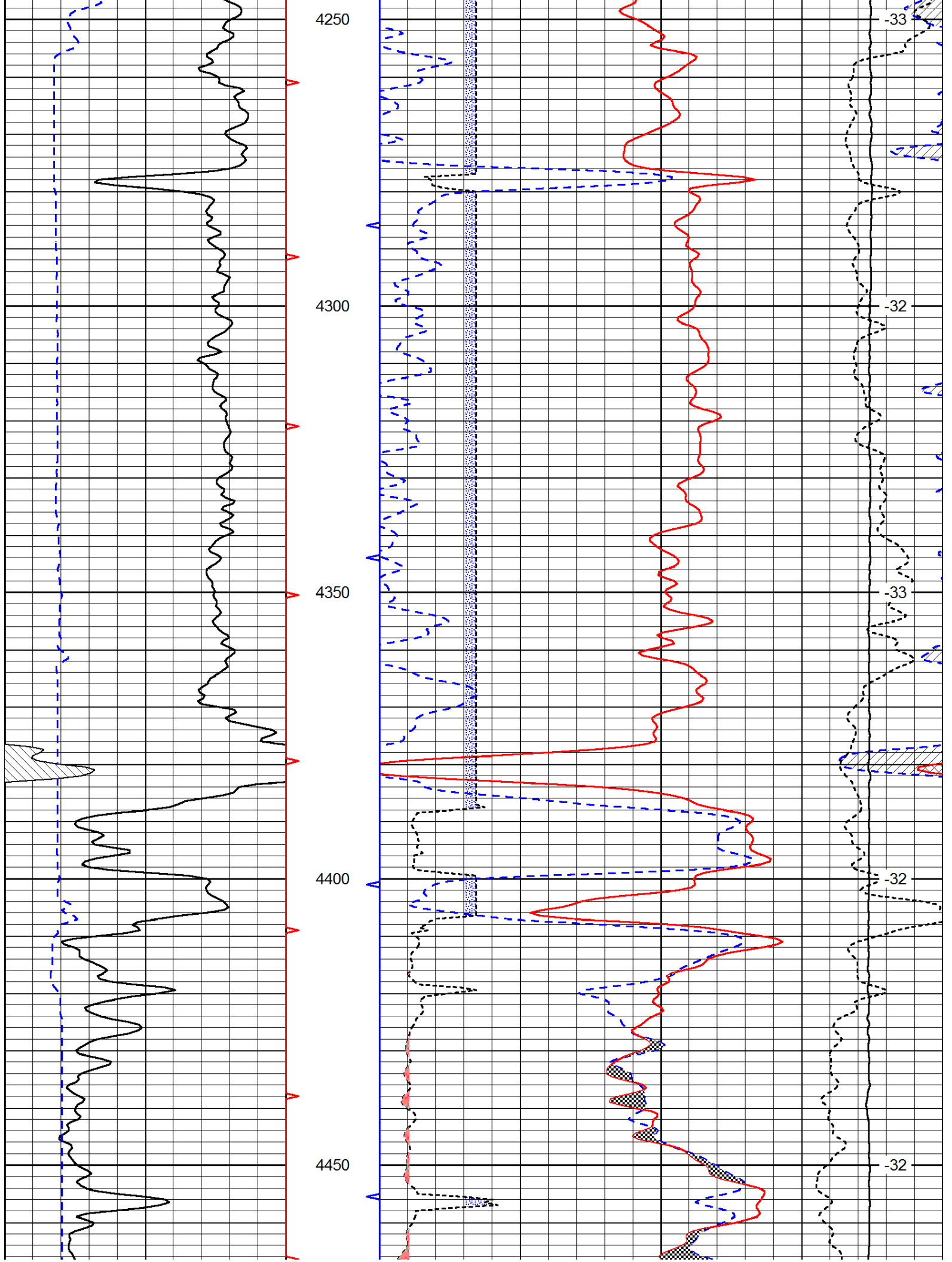
Z	Bulk Density			0
15000	Line Tension			0
2.625	DGA	3.425	-0.25	Correction 0.25
				LSPD

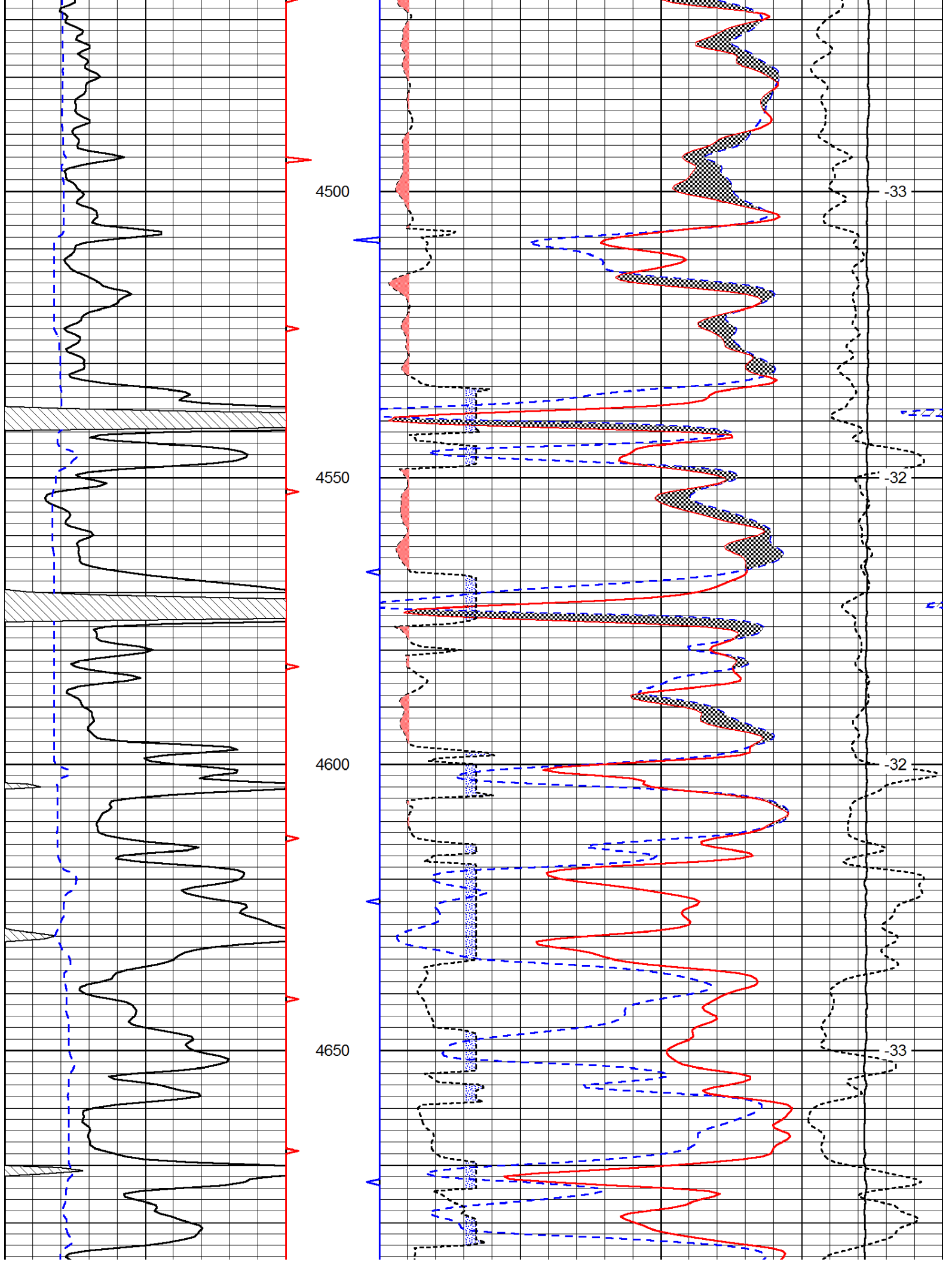
Database File: c:\warrior\data\indian oil_helen mae #3\indianoil_helenmae_3hd.db
 Dataset Pathname: dil/indstck
 Presentation Format: cndlspec
 Dataset Creation: Mon Jun 10 22:39:47 2013
 Charted by: Depth in Feet scaled 1:240

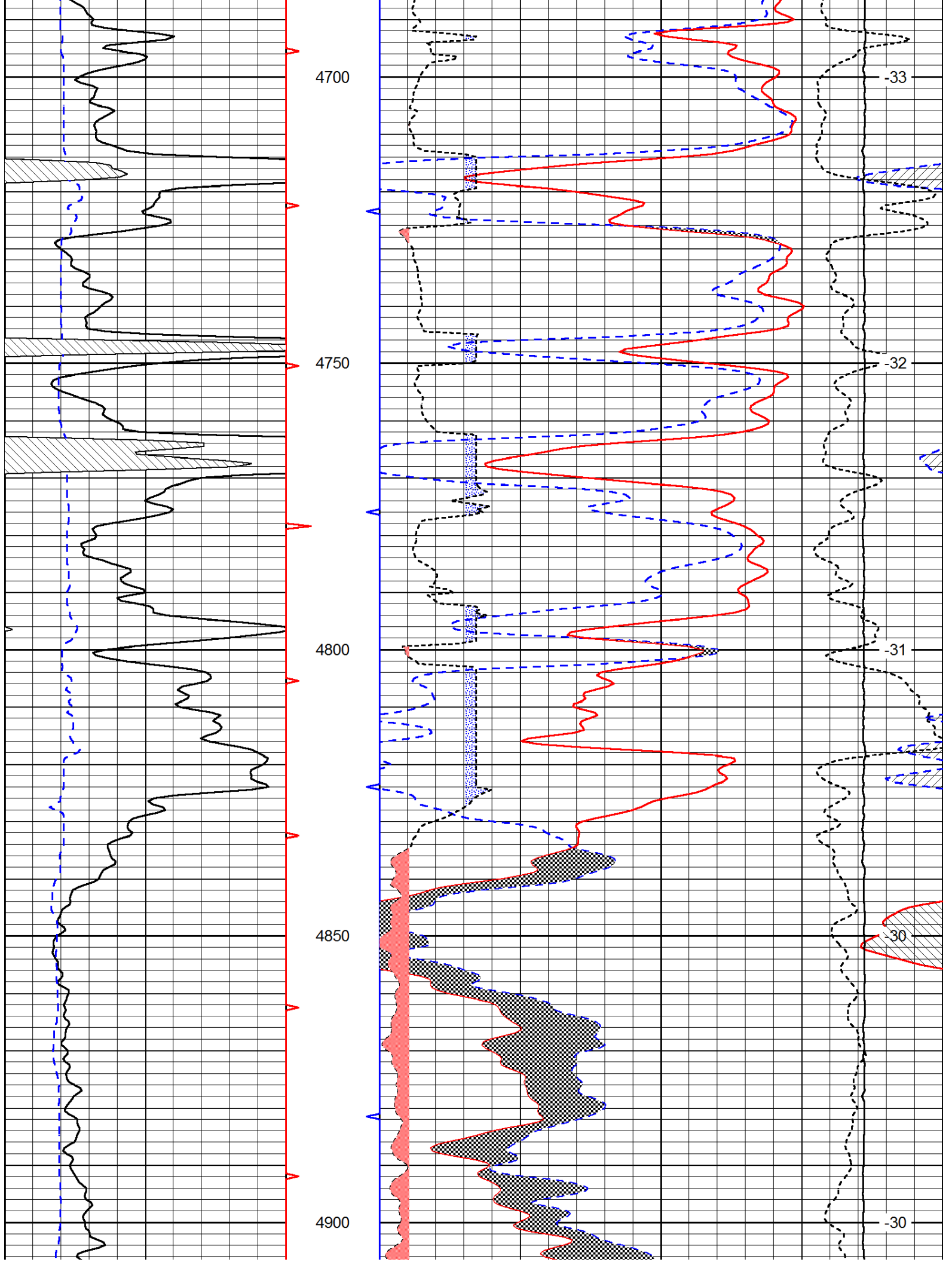
0	Gamma Ray	150
6	Caliper (GAPI)	16

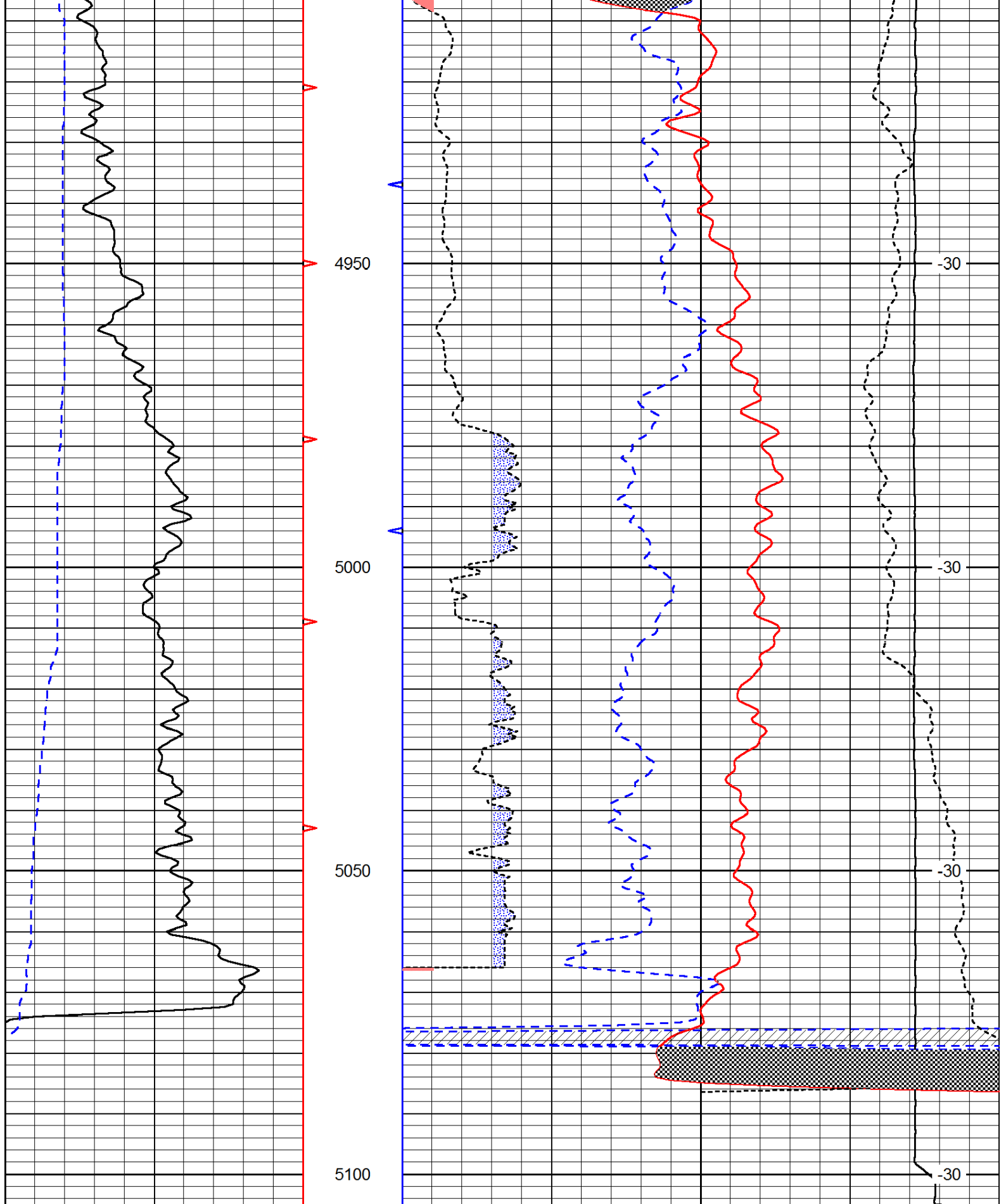
30	Compensated Neutron (Limestone)			-10
30	Compensated Density (Limestone)			-10
2.625	DGA	3.425	-0.25	Correction 0.25
15000	Line Tension			0
				LSPD











0	Gamma Ray	150
6	Caliper (GAPI)	16

30	Compensated Neutron (Limestone)	-10
30	Compensated Density (Limestone)	-10

2.625	DGA	3.425	-0.25	Correction	0.25
15000	Line Tension				0

LSFD