



Pioneer Energy Services

## Computer Processed Interpretation

15-007-24,031-00-00

API No.

Company Indian Oil Company, Inc.

Well Helen Mae #3

Field Stranathan

County Barber State Kansas

Location

SW SE SE  
330' FSL & 990' FEL

Other Services  
DIL/CNL/CDL

Sec: 10 Twp: 35S Rge: 12W

Permanent Datum Ground Level

Kelly Bushing Elevation 1382

11 Ft. Above Perm. Datum

Elevation

K.B. 1393  
D.F. 1382  
G.L. 1382

Drilling Measured From Kelly Bushing

Date Recorded 6/10/2013

Depth Logger 5099

Curve Definitions

SW Water Saturation

SXO Water Saturation In The Flushed Zone

VCL Volume Of Clay

PHIE Density - Neutron Crossplot Shale Corrected

BWV Bulk Volume Water

BWMSXO Bulk Volume Water In Flushed Zone

DCAL Caliper

SPC SP Corrected For Baseline

DGA Apparent Grain Density

Payflag If: PHIE > 2 %, VCL < 40 %, SPC > -10 , SW < 50 % & DCAL < 11

Recorded By J. Long

Witnessed By Scott Alberg

Analysis By Dale Legleiter

<<< Fold Here >>>

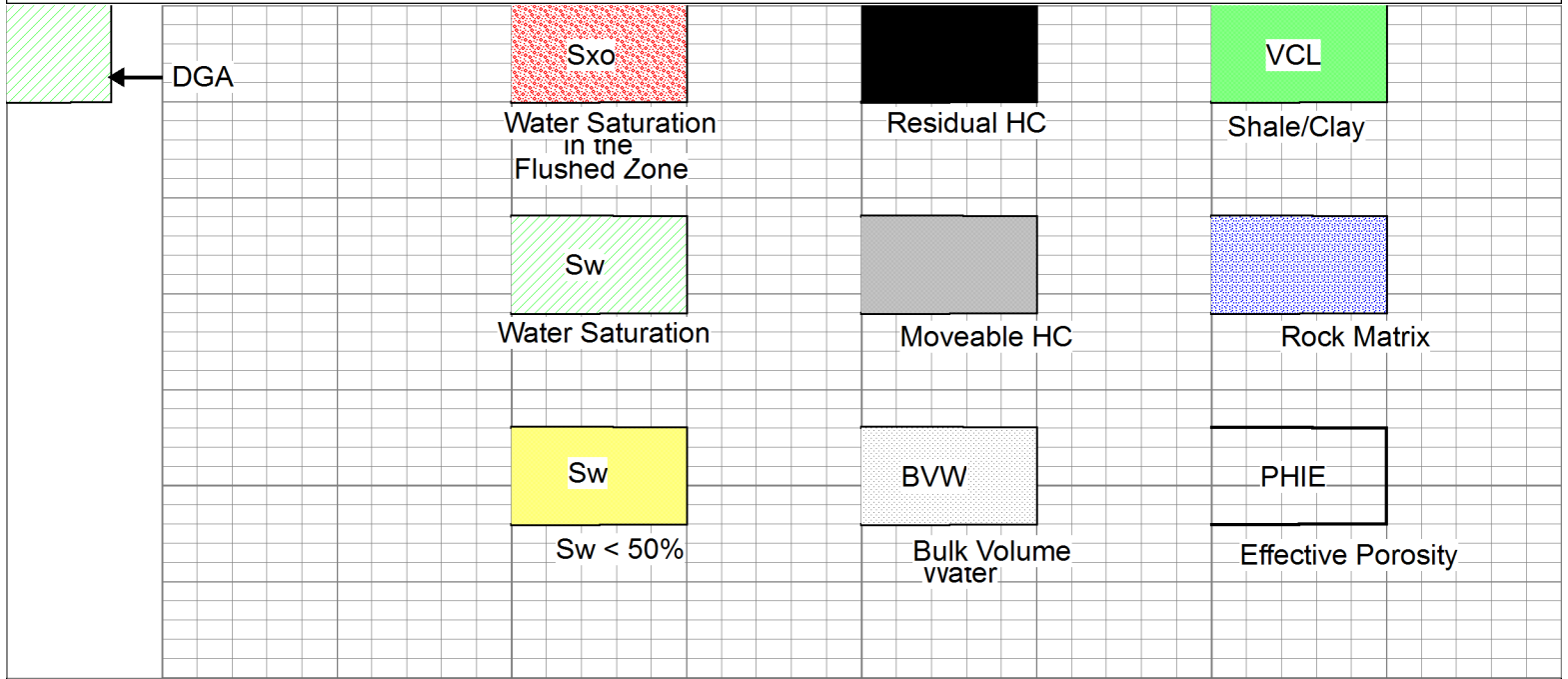
All interpretations are opinions based on inferences from electrical or other measurements and we cannot and do not guarantee the accuracy or correctness of any interpretation, and we shall not, except in the case of gross or willful negligence on our part, be liable or responsible for any loss, costs, damages, or expenses incurred or sustained by anyone resulting from any interpretation made by any of our officers, agents or employees. These interpretations are also subject to our general terms and conditions set out in our current Price Schedule.

### Comments

Thank you for using Pioneer Energy Services  
www.pioneer.com  
785 625 3858

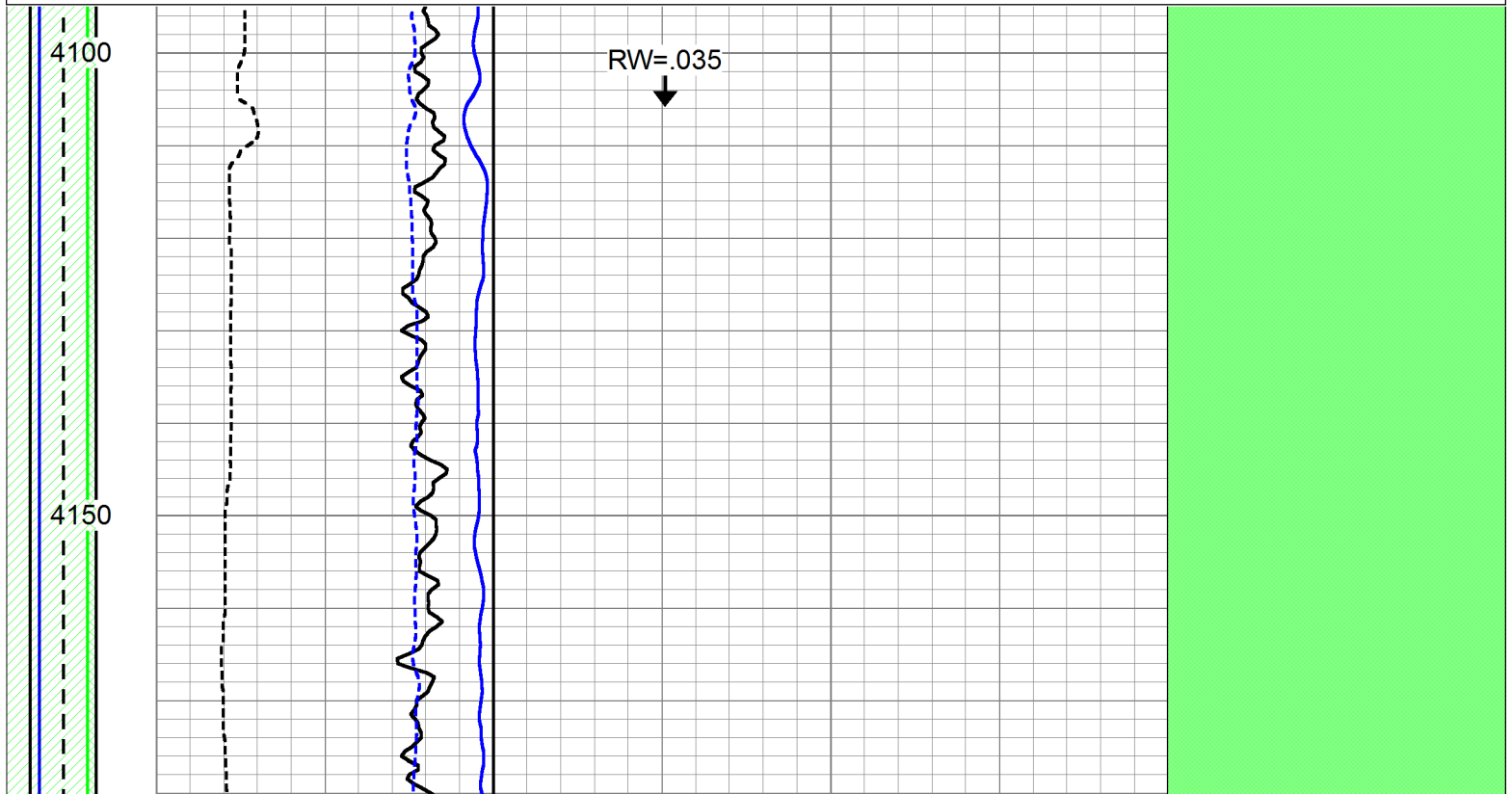
Hardtner, 2 1/2 East to Roundup Road, 1/2 South, West Into

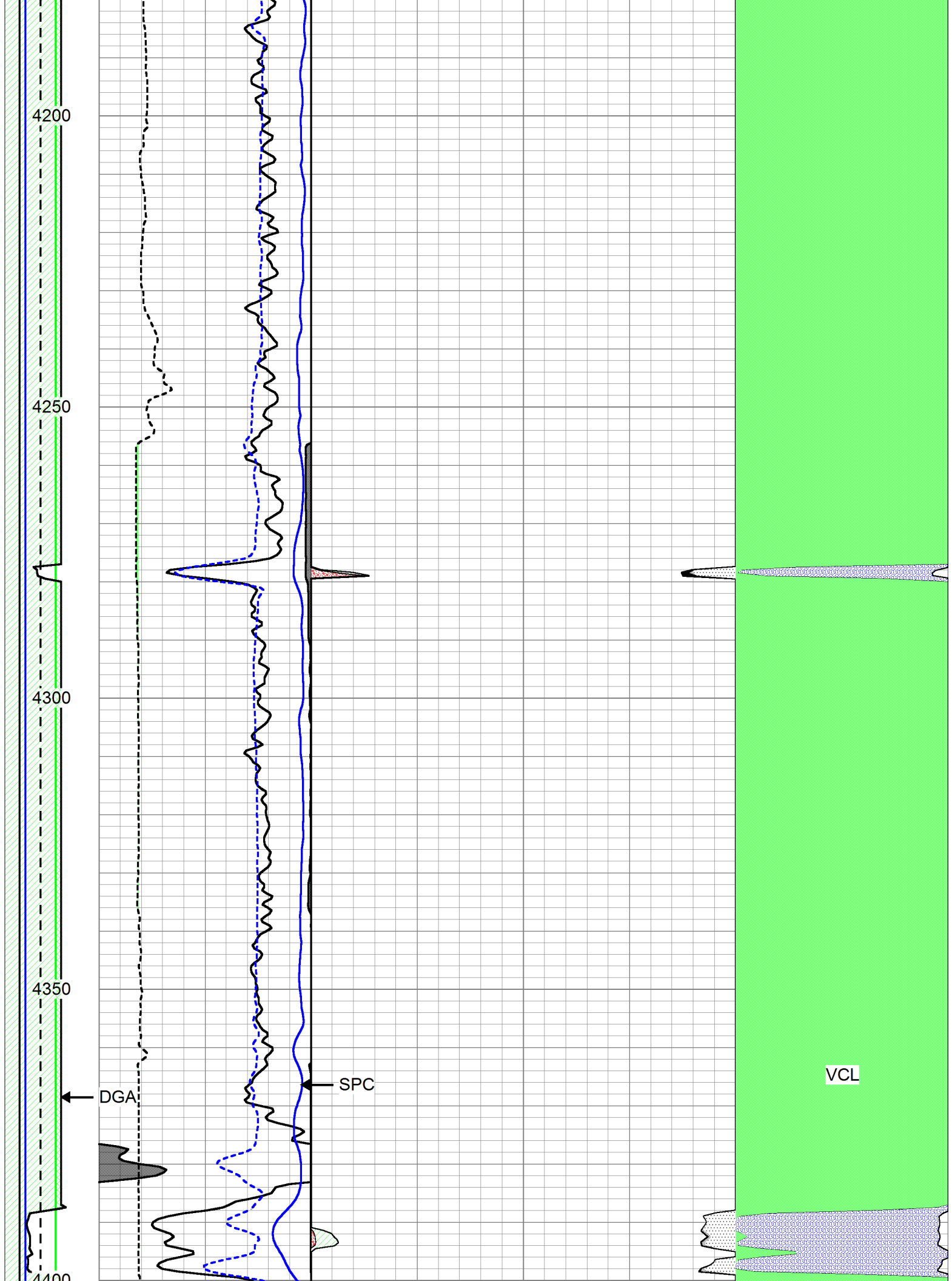
Database File: c:\warrior\data\cross plots\2wxplt.db  
Dataset Pathname: litho  
Presentation Format: 2wxplt

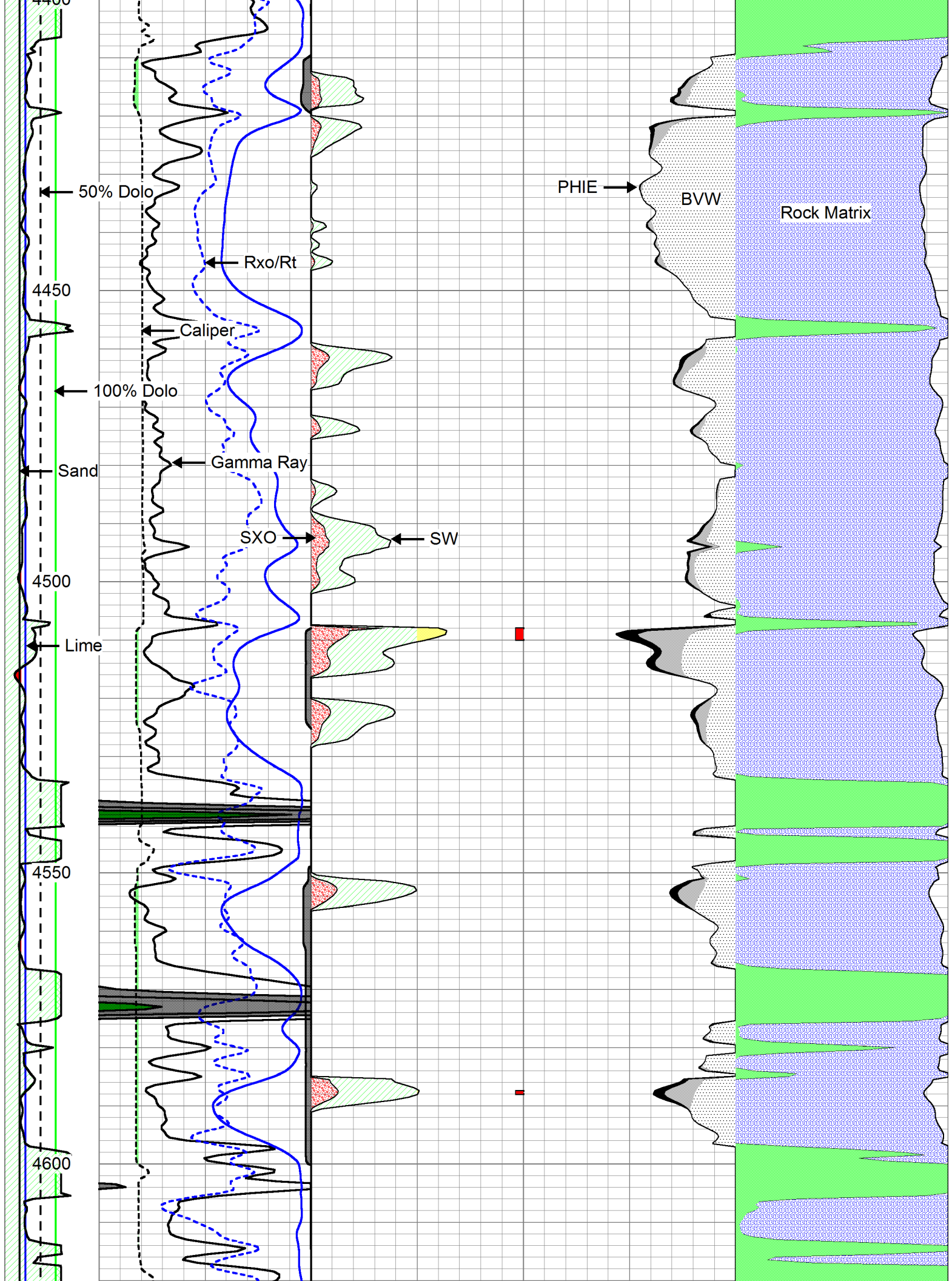


Database File: c:\warrior\data\indian oil\_helen mae #3\indianoil\_helenmae\_3hd.db  
 Dataset Pathname: dil/indcpi  
 Presentation Format: calc  
 Dataset Creation: Tue Jun 11 09:00:04 2013  
 Charted by: Depth in Feet scaled 1:240

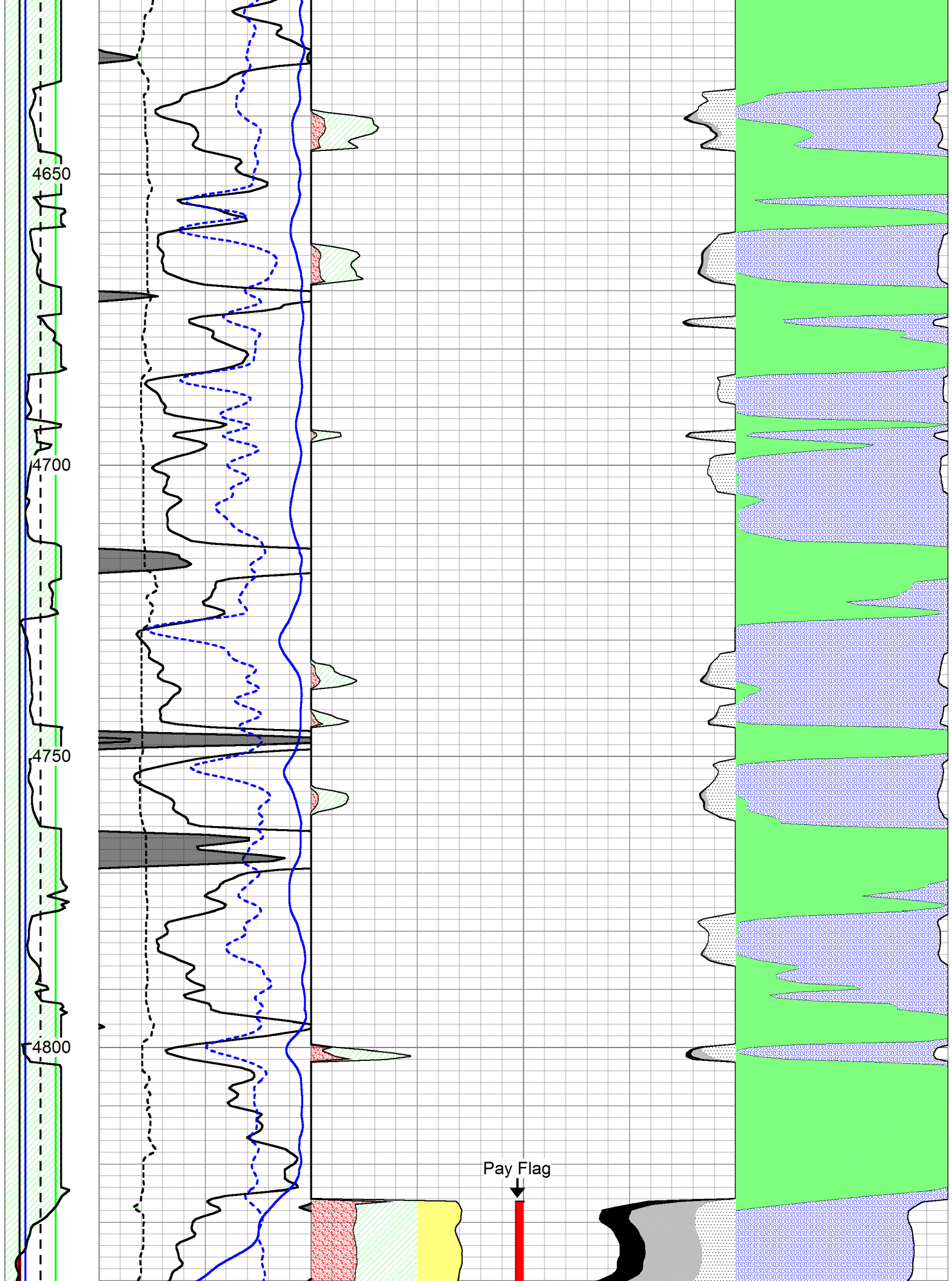
DGA	0	Gamma Ray	150	1	SW	0	0.3	PHIE	0	0	VCL	1	
2.6	3.1	6	DCAL	16	30	PAYFLAG	0	0.3	BVW	0	1	PHIE	0
		-150	SPC (mV)	0	1	SXO	0	0.3	BVWSXO	0			

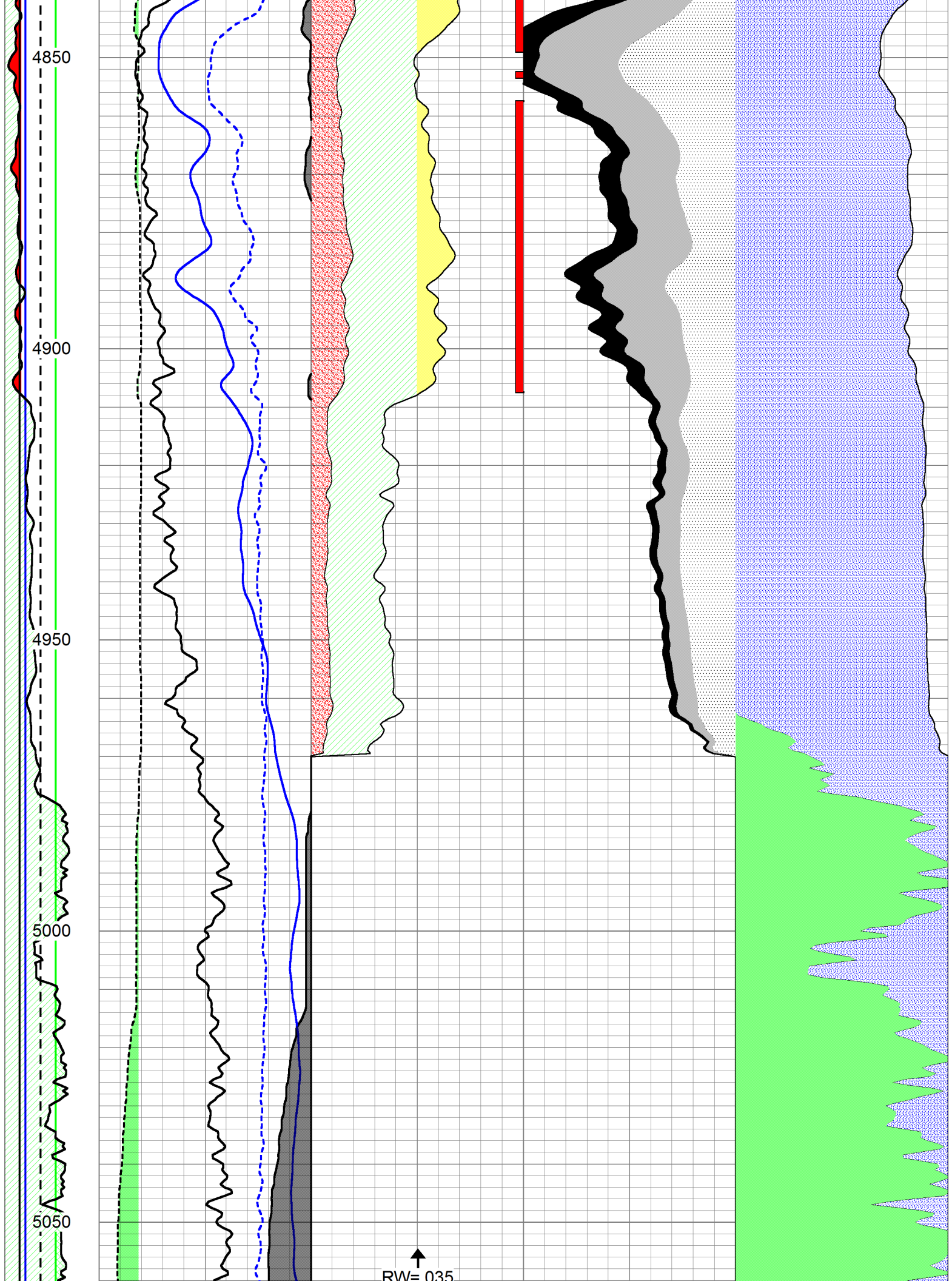












DGA	0	Gamma Ray	150	1	SW	0	0.3	PHIE	0	0	VCL	1	
2.6	3.1	6	DCAL	16	30	PAYFLAG	0	0.3	BVW	0	1	PHIE	0
		-150	SPC (mV)	0	1	SXO	0	0.3	BVWSXO	0			