



**COMPLETION
& PRODUCTION
SERVICES CO.**

**DUAL
INDUCTION
LOG**

Company VAL ENERGY INC.
Well BEACHNER #1-12
Field
County THOMAS
State KANSAS

Company VAL ENERGY INC.
Well BEACHNER #1-12
Field
County THOMAS State KANSAS

Location: API # : 15-193-20892-0000
1310' FNL & 565' FEL
SW - SE - NE - NE
SEC 12 TWP 8S RGE 36W
Permanent Datum GROUND LEVEL Elevation 3266
Log Measured From KELLY BUSHING 10' A.G.L.
Drilling Measured From KELLY BUSHING
Elevation
K.B. 3276
D.F. 3274
G.L. 3266

Date	6/21/13
Run Number	ONE
Depth Driller	4880
Depth Logger	4878
Bottom Logged Interval	4876
Top Log Interval	0
Casing Driller	8 5/8" @ 232'
Casing Logger	
Bit Size	7 7/8"
Type Fluid in Hole	CHEMICAL MUD
Density / Viscosity	9.3/53
pH / Fluid Loss	10.5/9.6
Source of Sample	FLOWLINE
Rm @ Meas. Temp	0.70 @ 75F
Rmt @ Meas. Temp	0.53 @ 75F
Rmc @ Meas. Temp	0.84 @ 75F
Source of Rmf / Rmc	MEASUREMENT
Rm @ BHT	0.42 @ 124F
Time Circulation Stopped	2 HOURS
Time Logger on Bottom	
Maximum Recorded Temperature	124F
Equipment Number	4010
Location	HAYS, KANSAS
Recorded By	JEFF GRONWEG
Witnessed By	STEVE MURPHY

<<< Fold Here >>>

All interpretations are opinions based on inferences from electrical or other measurements and we cannot and do not guarantee the accuracy or correctness of any interpretation, and we shall not, except in the case of gross or willful negligence on our part, be liable or responsible for any loss, costs, damages, or expenses incurred or sustained by anyone resulting from any interpretation made by any of our officers, agents or employees. These interpretations are also subject to our general terms and conditions set out in our current Price Schedule.

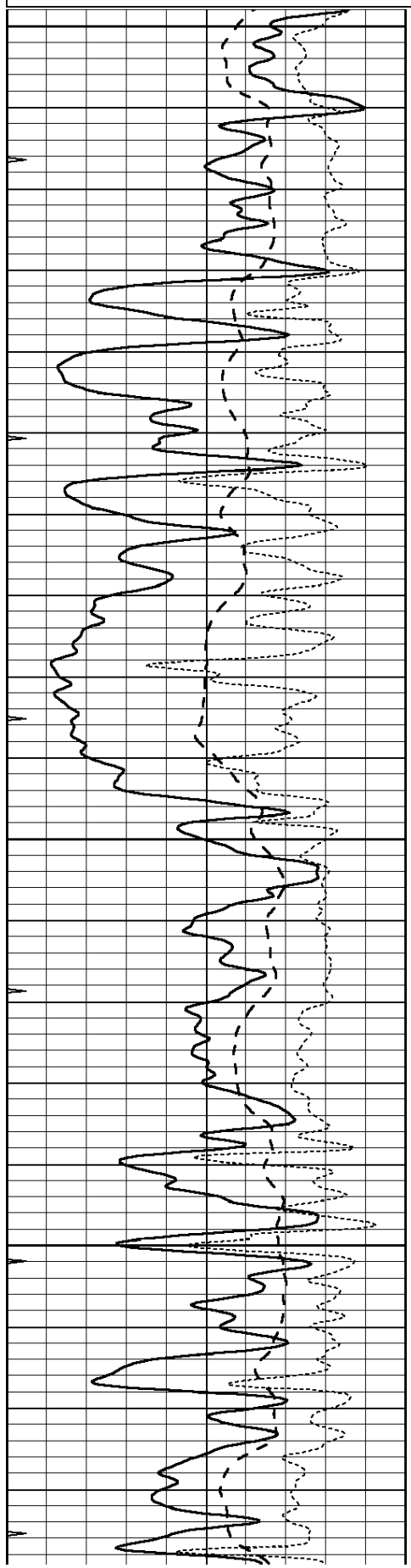
Comments

THANK YOU FOR USING NABORS, HAYS, KS. (785) 628-6395
DIRECTIONS:
BREWSTER, KS - 4 MILES EAST ON OLD HWY 24 TO RD 5
1 MILE NORTH - 1 MILE EAST - 1 MILE SOUTH & EAST INTO

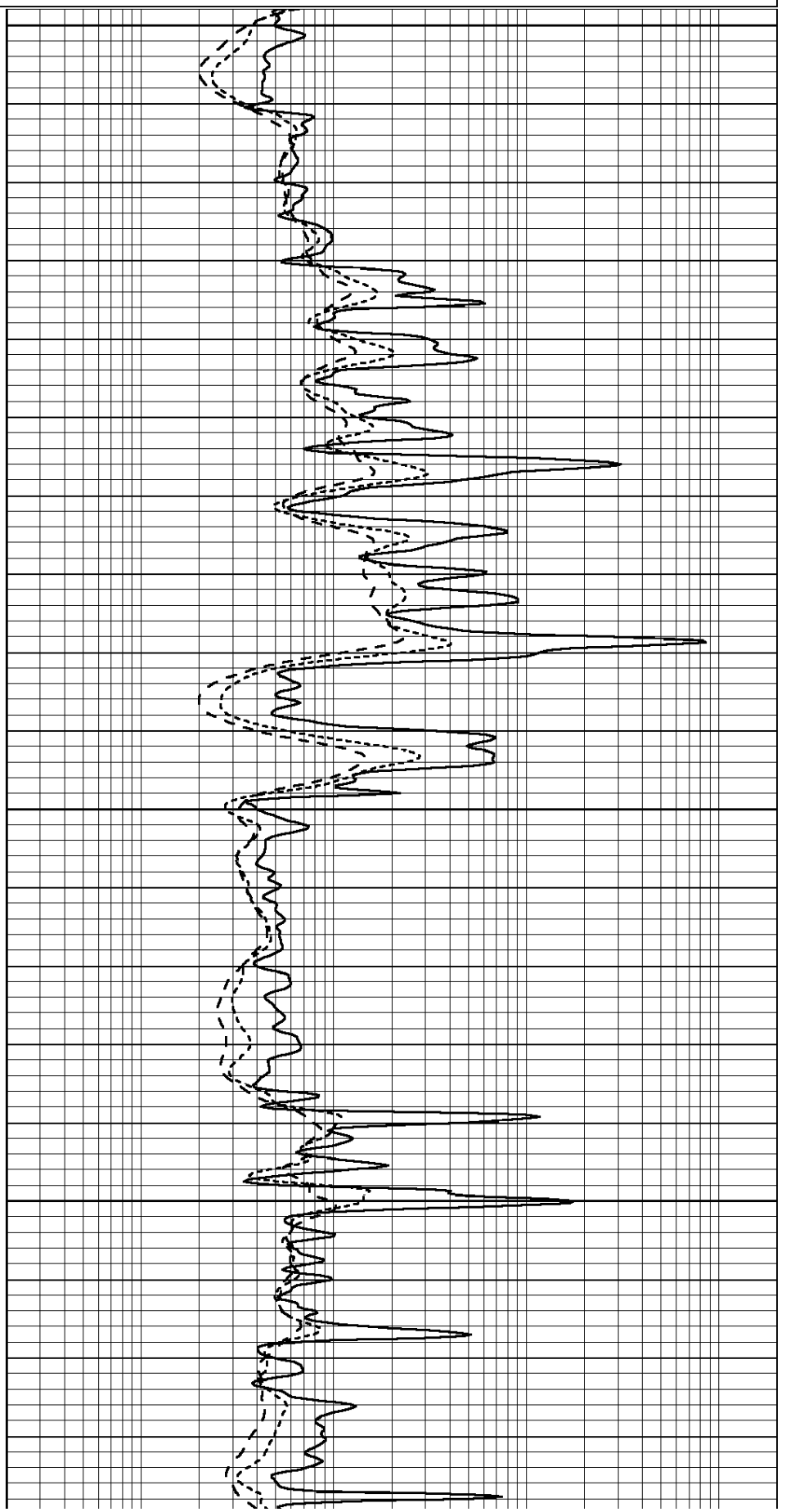
Database File: 011258ddn.db
Dataset Pathname: pass3.2
Presentation Format: _dil
Dataset Creation: Sat Jun 22 06:19:02 2013 by Calc Open-Cased 090629
Charted by: Depth in Feet scaled 1:240

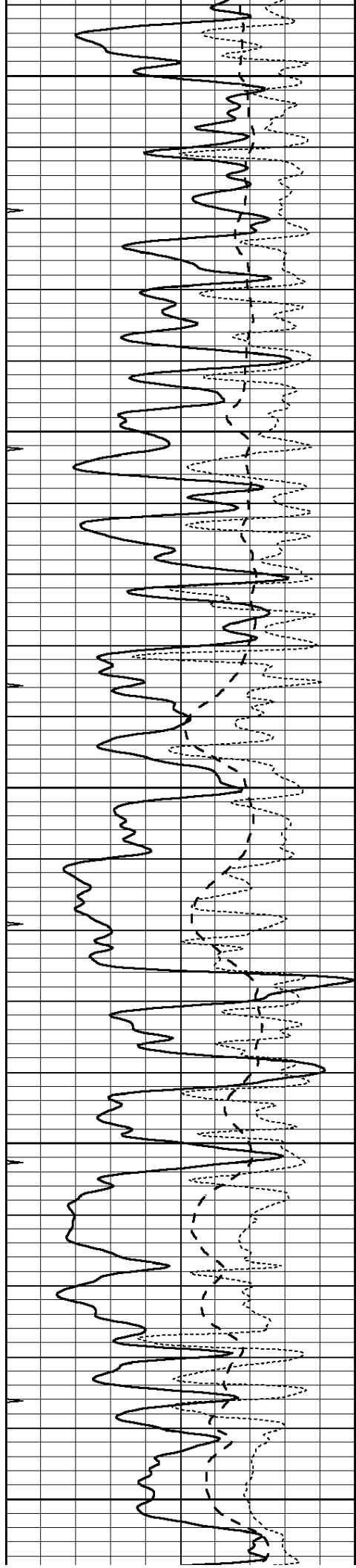
0	GAMMA RAY (GAPI)	150
-100	SP (mV)	100
-250	Rxo/Rt	50
0	MINMK	20

0.2	SHALLOW GUARD (Ohm-m)	2000
0.2	DEEP INDUCTION (Ohm-m)	2000
0.2	MEDIUM INDUCTION (Ohm-m)	2000



3500
3550
3600
3650





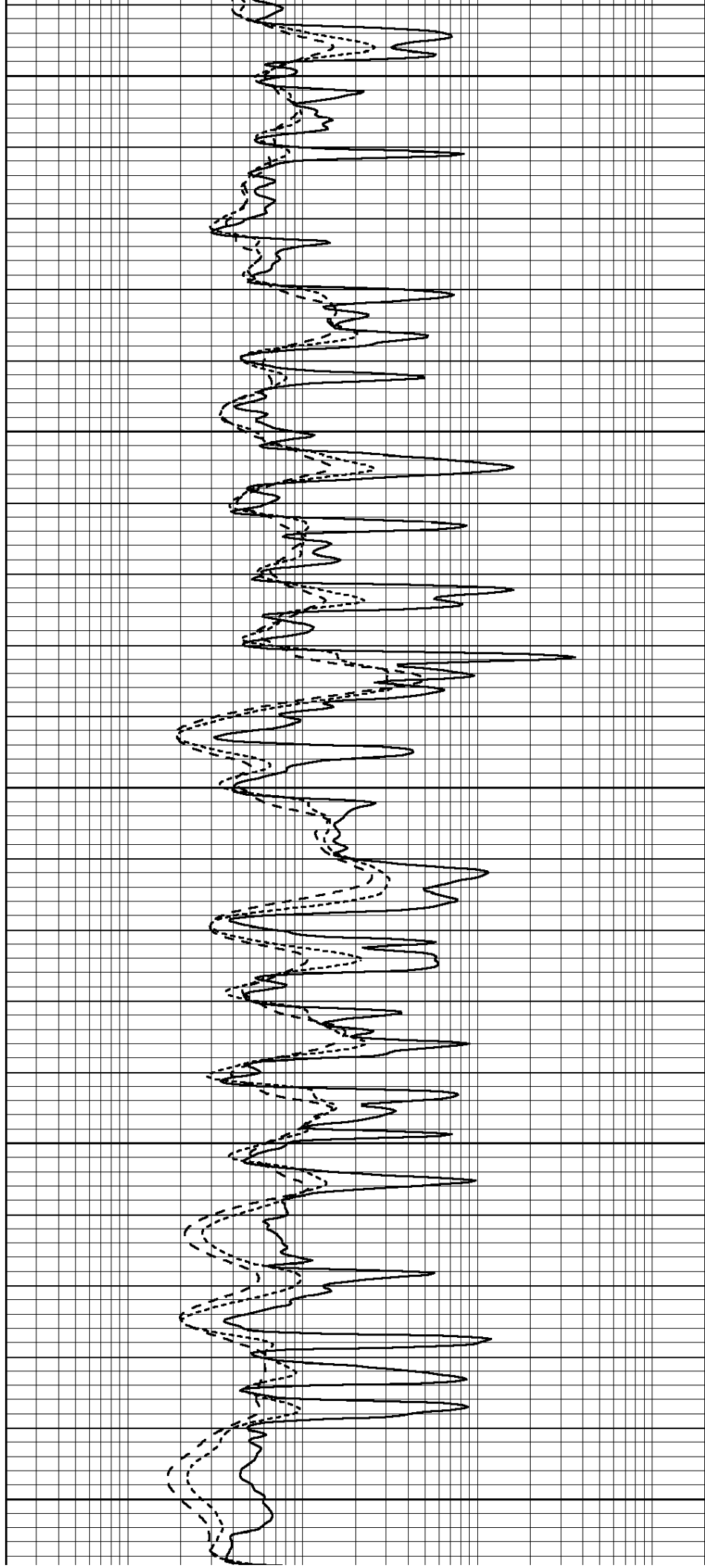
3700

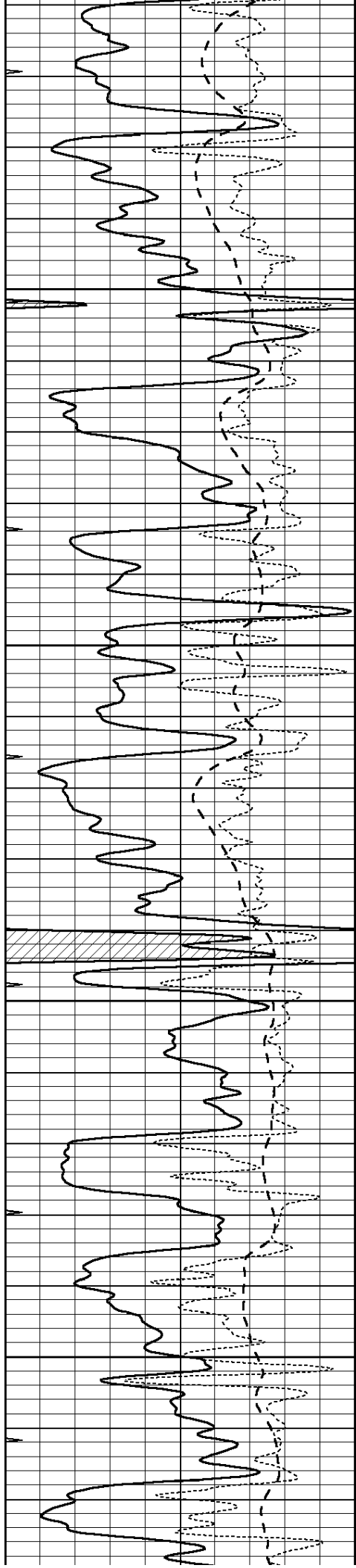
3750

3800

3850

3900



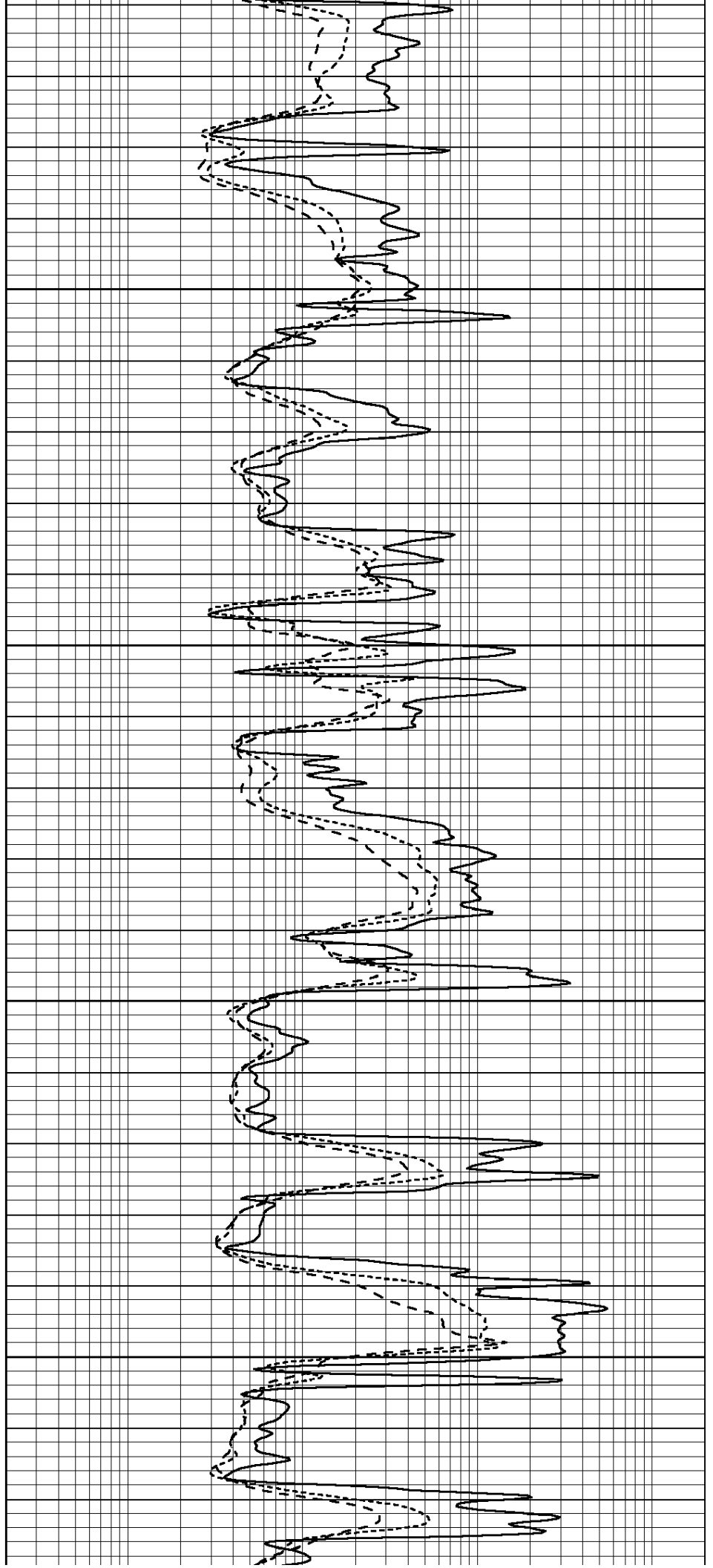


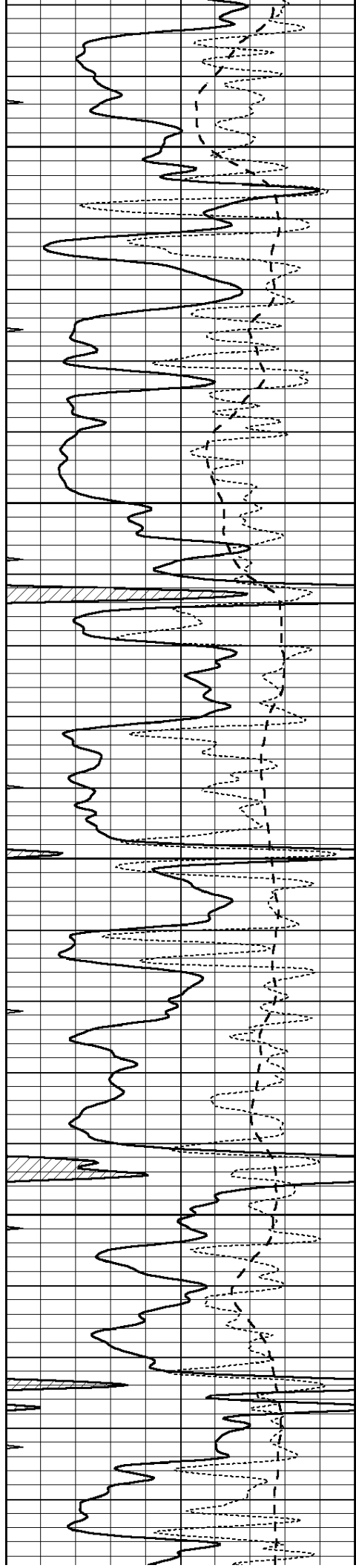
3950

4000

4050

4100



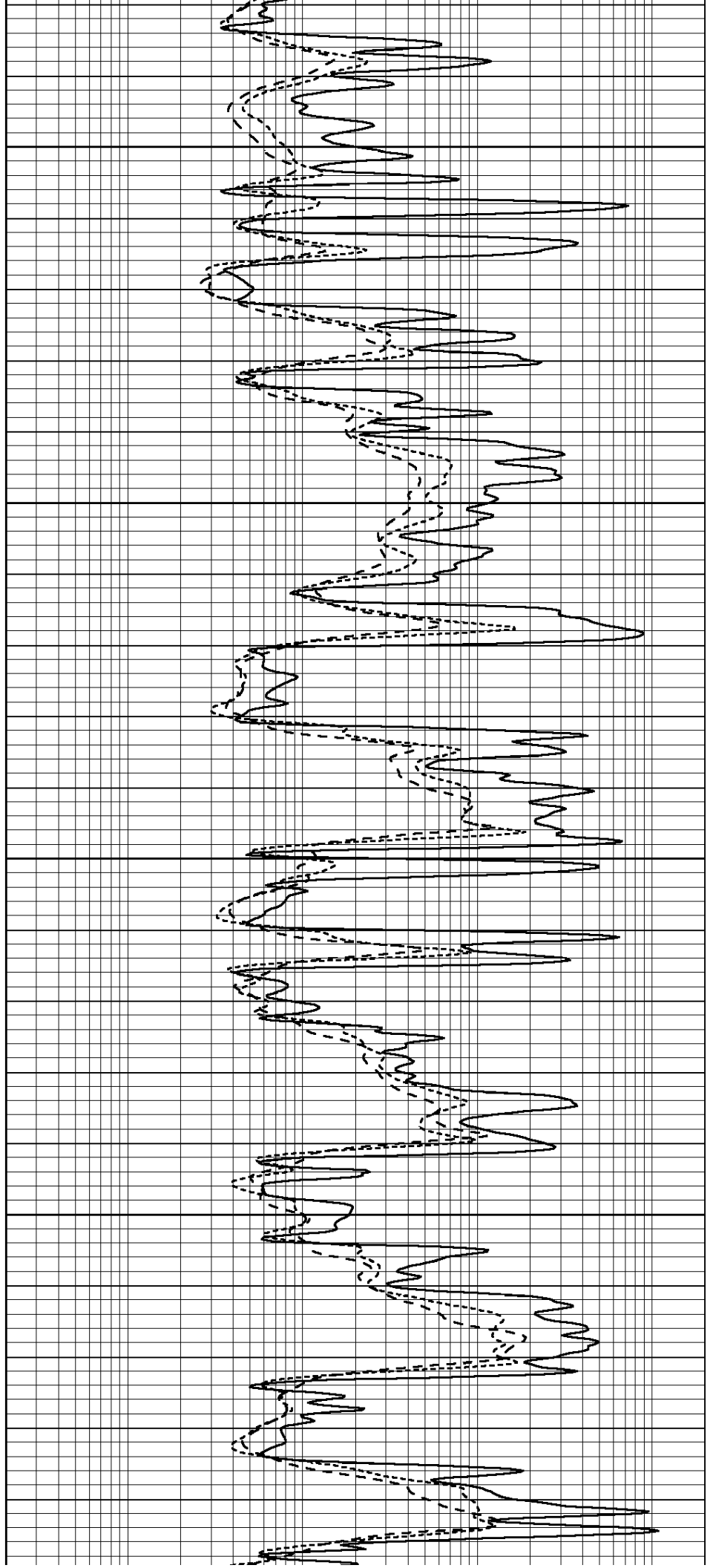


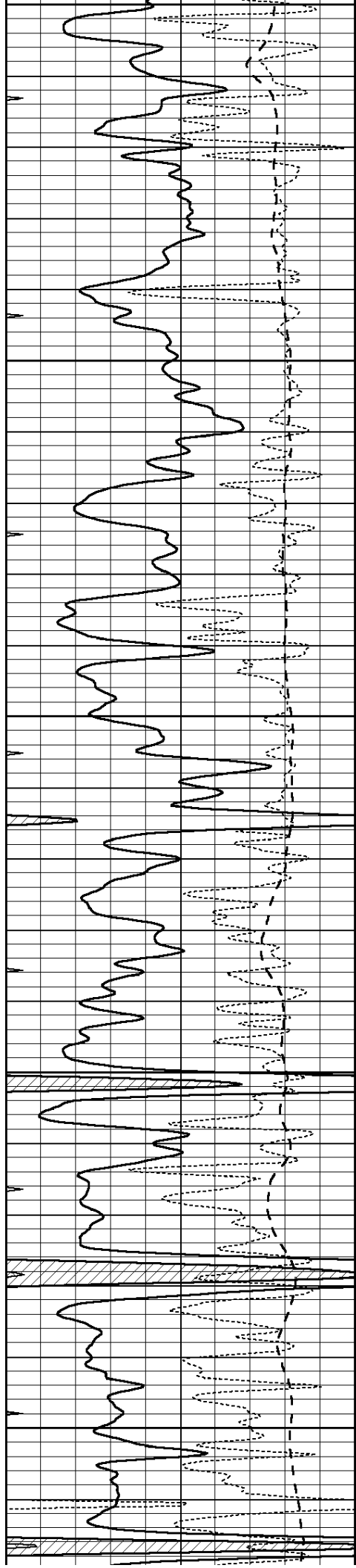
4150

4200

4250

4300





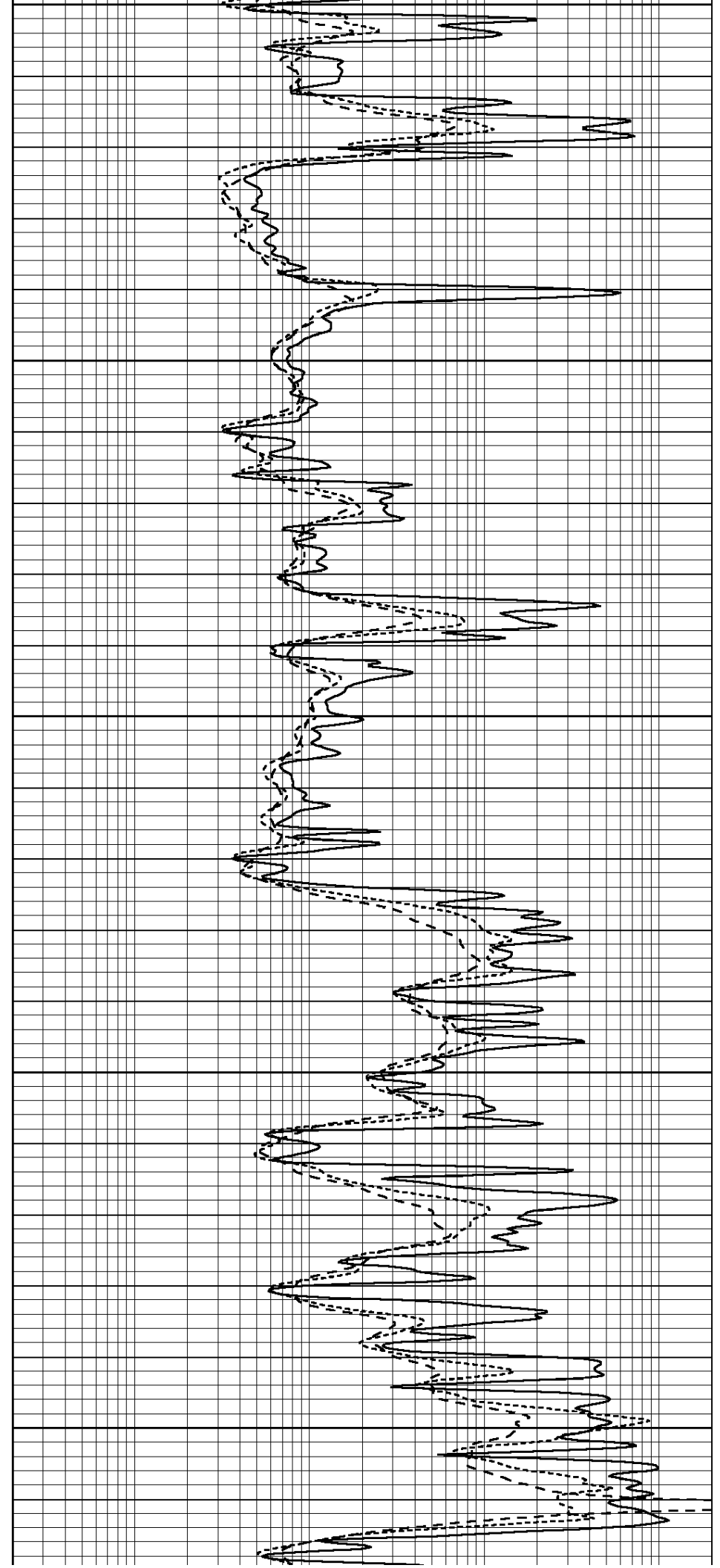
4350

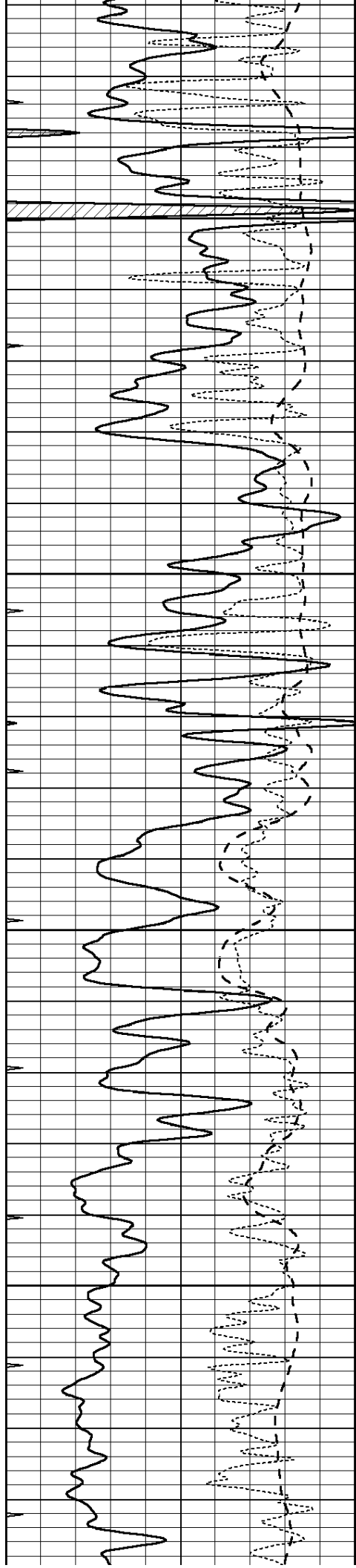
4400

4450

4500

4550



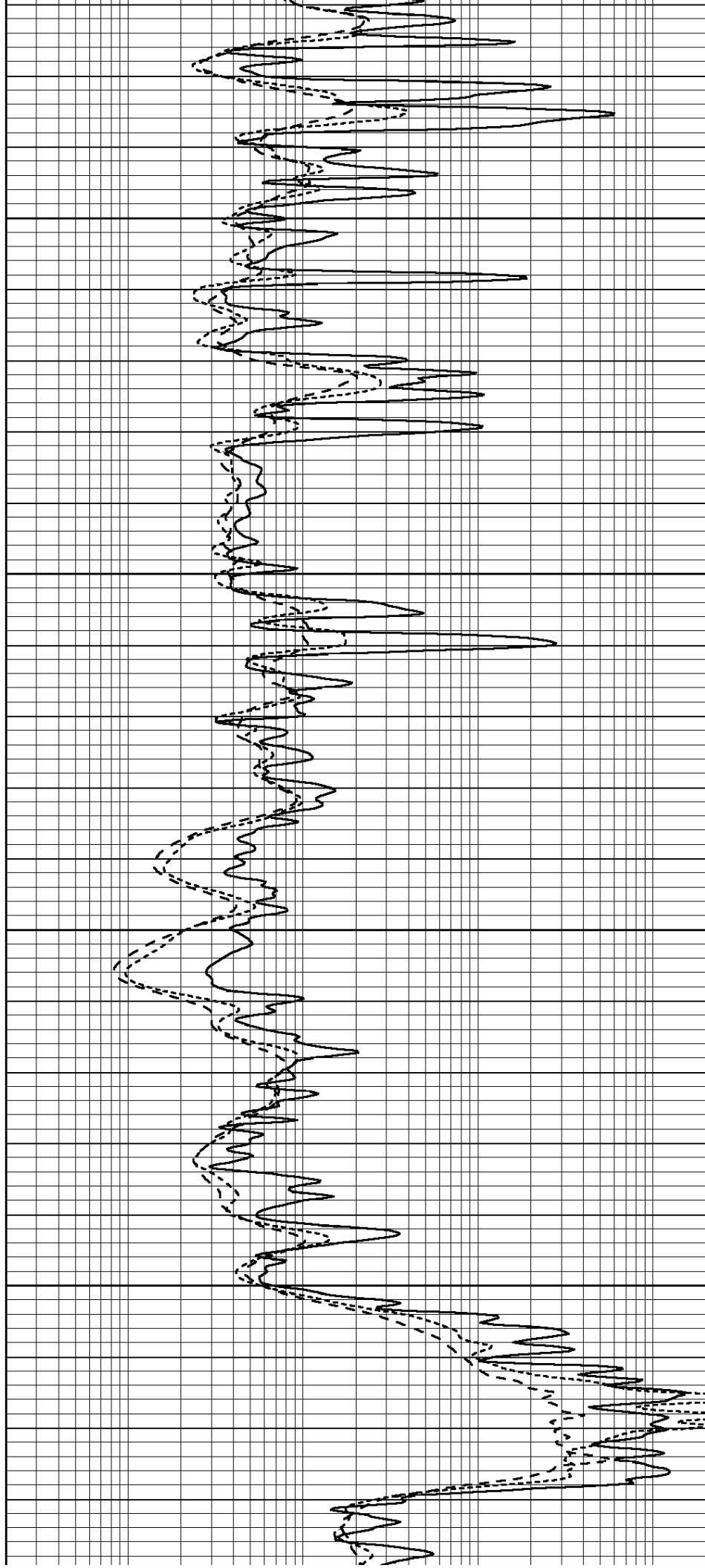


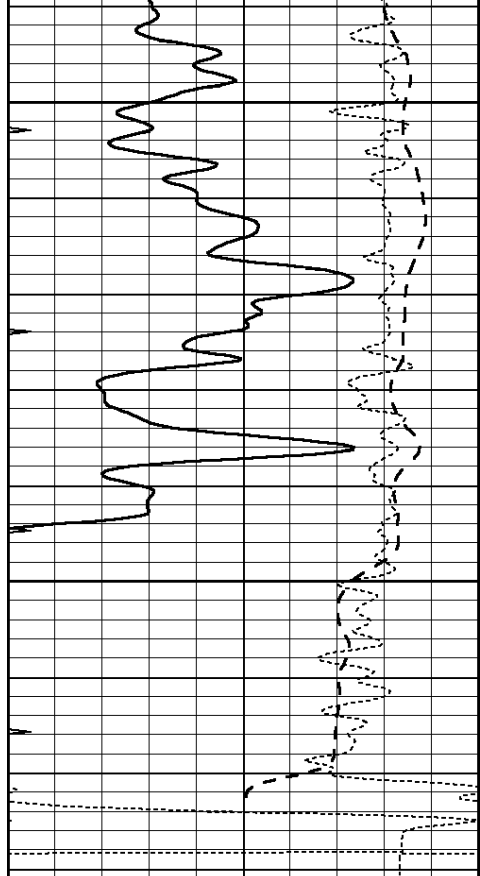
4600

4650

4700

4750

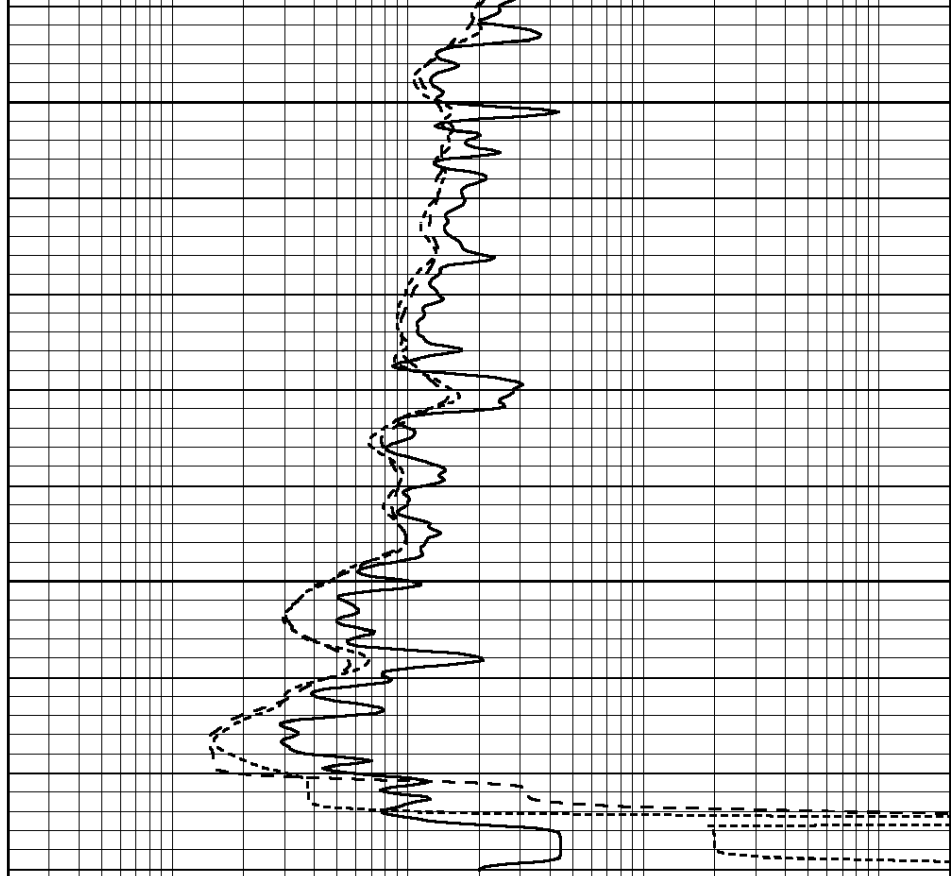




0	GAMMA RAY (GAPI)	150
-100	SP (mV)	100
-250	Rxo/Rt	50
0	MINMK	20

4800

4850



0.2	SHALLOW GUARD (Ohm-m)	2000
0.2	DEEP INDUCTION (Ohm-m)	2000
0.2	MEDIUM INDUCTION (Ohm-m)	2000