



**COMPLETION
& PRODUCTION
SERVICES CO.**

**COMPENSATED
DENSITY/NEUTRON
LOG**

Company TRANS PACIFIC OIL CORP.
Well HANKS "C" #1-10
Field WILDCAT
County LANE
State KANSAS

Company TRANS PACIFIC OIL CORP.
Well HANKS "C" #1-10
Field WILDCAT
County LANE State KANSAS

Location: 1320' FSL & 330' FEL
E2 - E2 - SE
API # : 15-101-22443-00-00
Other Services DIL
Permanent Datum GROUND LEVEL Elevation 2581
Log Measured From KELLY BUSHING 9' A.G.L.
Drilling Measured From KELLY BUSHING
Elevation
K.B. 2590
D.F. 2588
G.L. 2581

Date	6/14/13
Run Number	ONE
Depth Driller	4546
Depth Logger	4548
Bottom Logged Interval	4524
Top Log Interval	3600
Casing Driller	8 5/8" @ 223
Casing Logger	219
Bit Size	7 7/8
Type Fluid in Hole	CHEMICAL MUD
Density / Viscosity	9.3/60
pH / Fluid Loss	10/10.4
Source of Sample	FLOWLINE
Rim @ Meas. Temp	.60 @ 94F
Rmf @ Meas. Temp	.45 @ 94F
Rmc @ Meas. Temp	.72 @ 94F
Source of Rmf / Rmc	MEASURED
Rim @ BHT	.47 @ 121F
Time Circulation Stopped	2 HOURS
Time Logger on Bottom	
Maximum Recorded Temperature	121F
Equipment Number	680
Location	HAYS, KS.
Recorded By	IAN MABB
Witnessed By	MIKE KIDWELL

<<< Fold Here >>>

All interpretations are opinions based on inferences from electrical or other measurements and we cannot and do not guarantee the accuracy or correctness of any interpretation, and we shall not, except in the case of gross or willful negligence on our part, be liable or responsible for any loss, costs, damages, or expenses incurred or sustained by anyone resulting from any interpretation made by any of our officers, agents or employees. These interpretations are also subject to our general terms and conditions set out in our current Price Schedule.

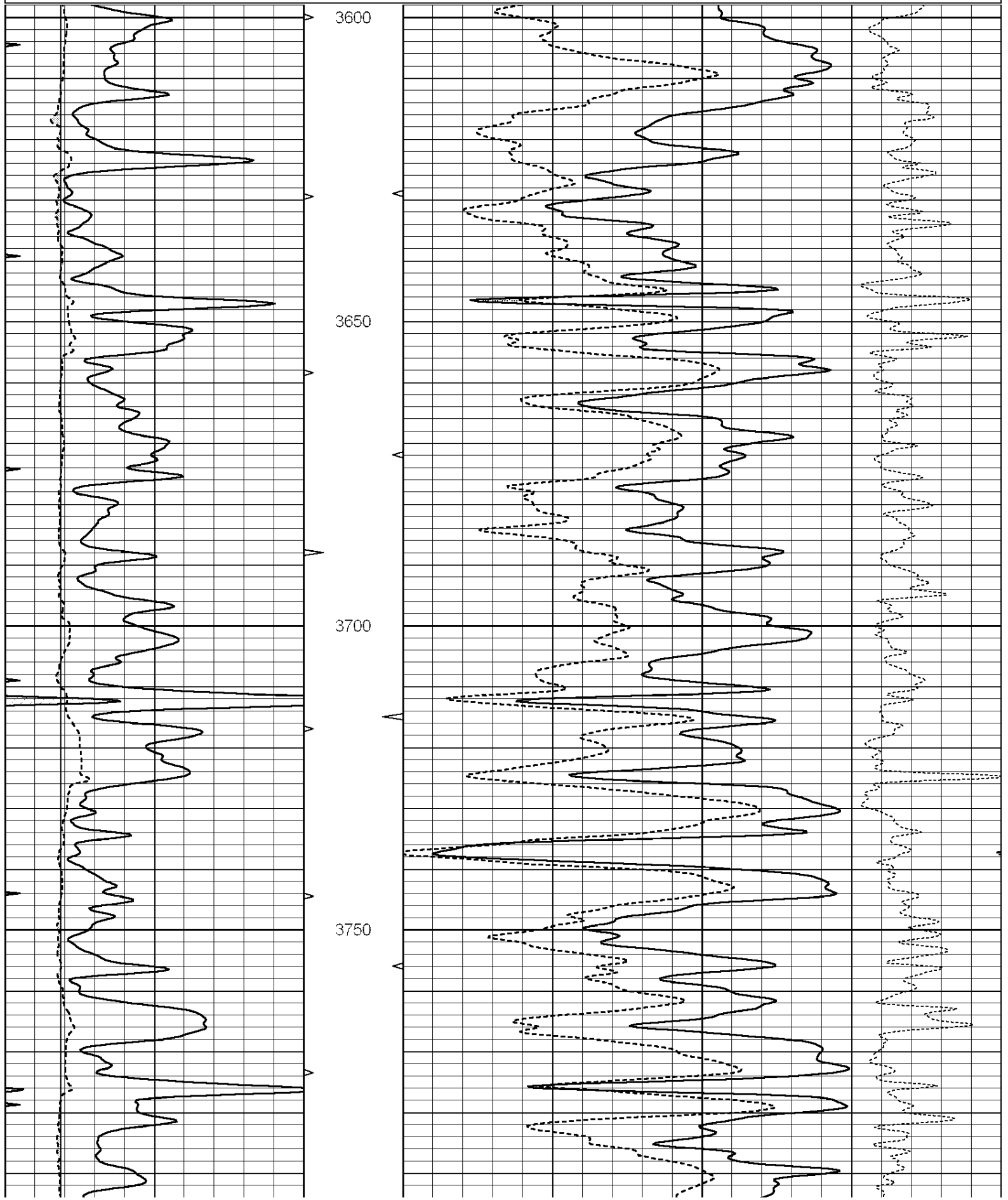
Comments

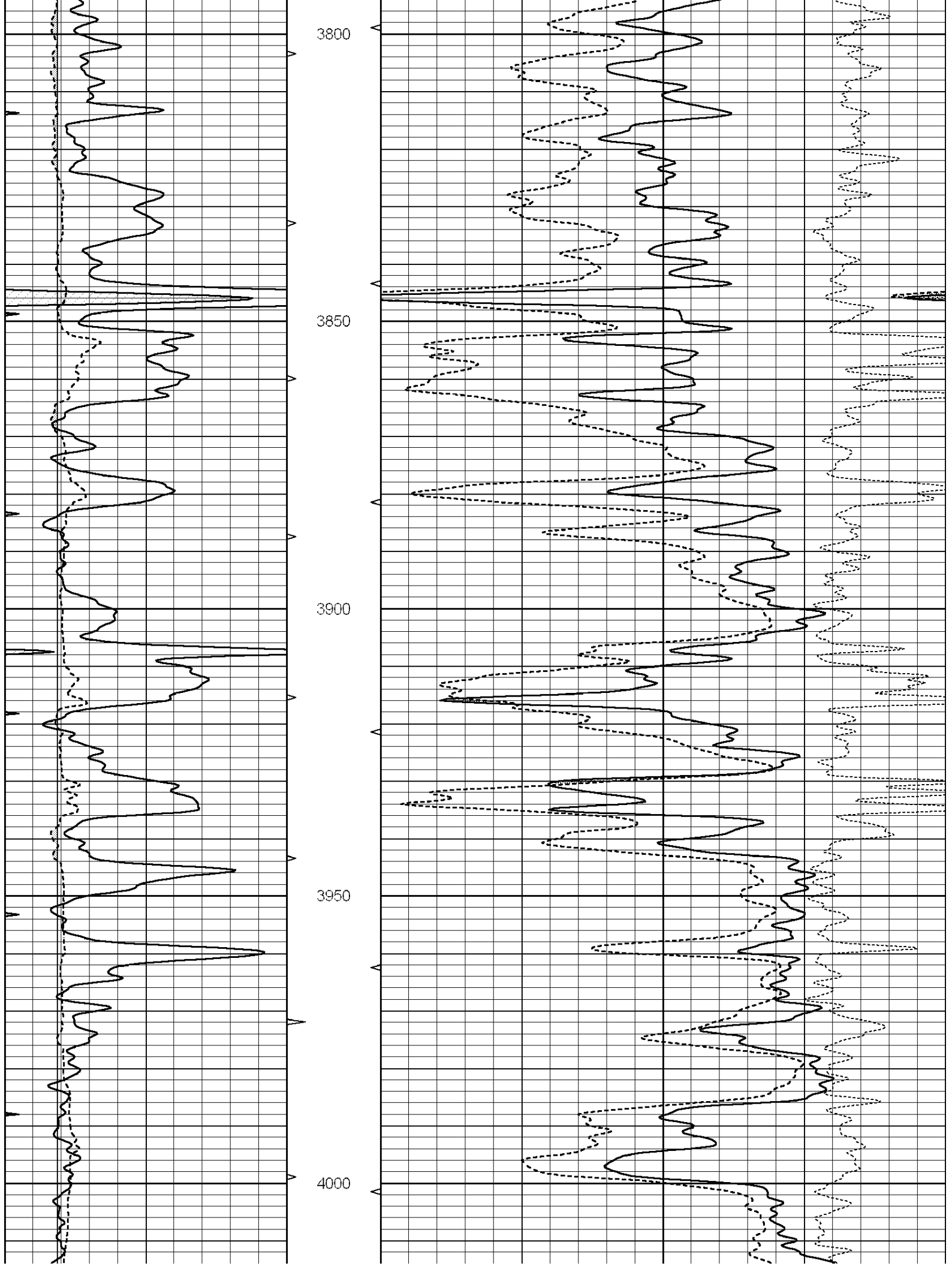
THANK YOU FOR USING NABORS COMPLETION & PRODUCTION SVCS. (785) 628-6395

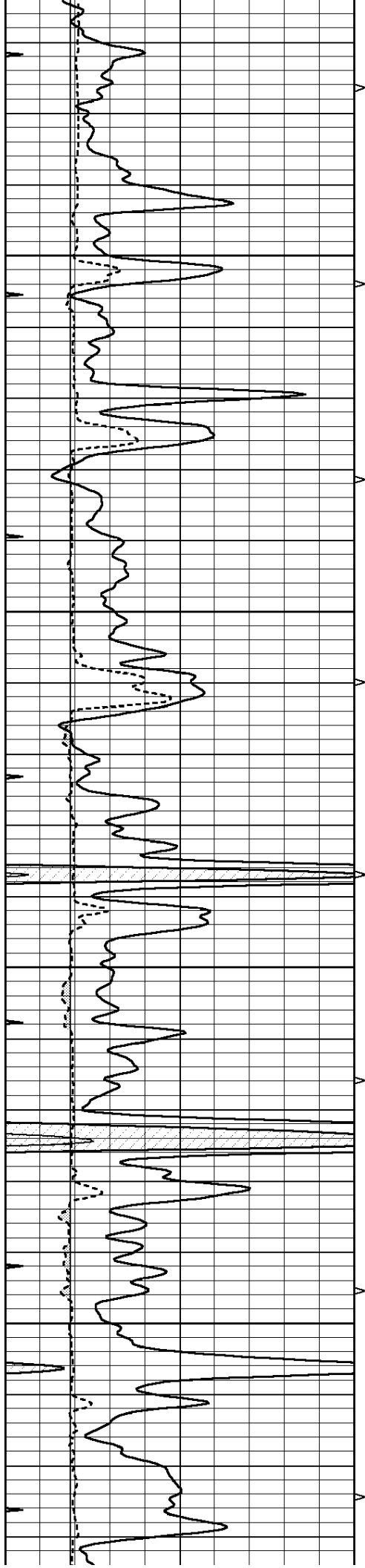
DIRECTIONS:

UTICA, KS. - WEST ON HWY 4 TO SCOUT RD. - SOUTH TO RD. 218 - EAST THROUGH THE GATE
FOLLOW THE PATH

0	GAMMA RAY (GAPI)	150	AVTX	30	COMPENSATED DENSITY (pu)	-10
6	CALIPER (in)	16	10 (ft3)	0 30	COMPENSATED NEUTRON (pu)	-10
0	MINMK	20	BVTX		-0.25 CORRECTION (g/cc)	0.25
			0 (ft3)	10		





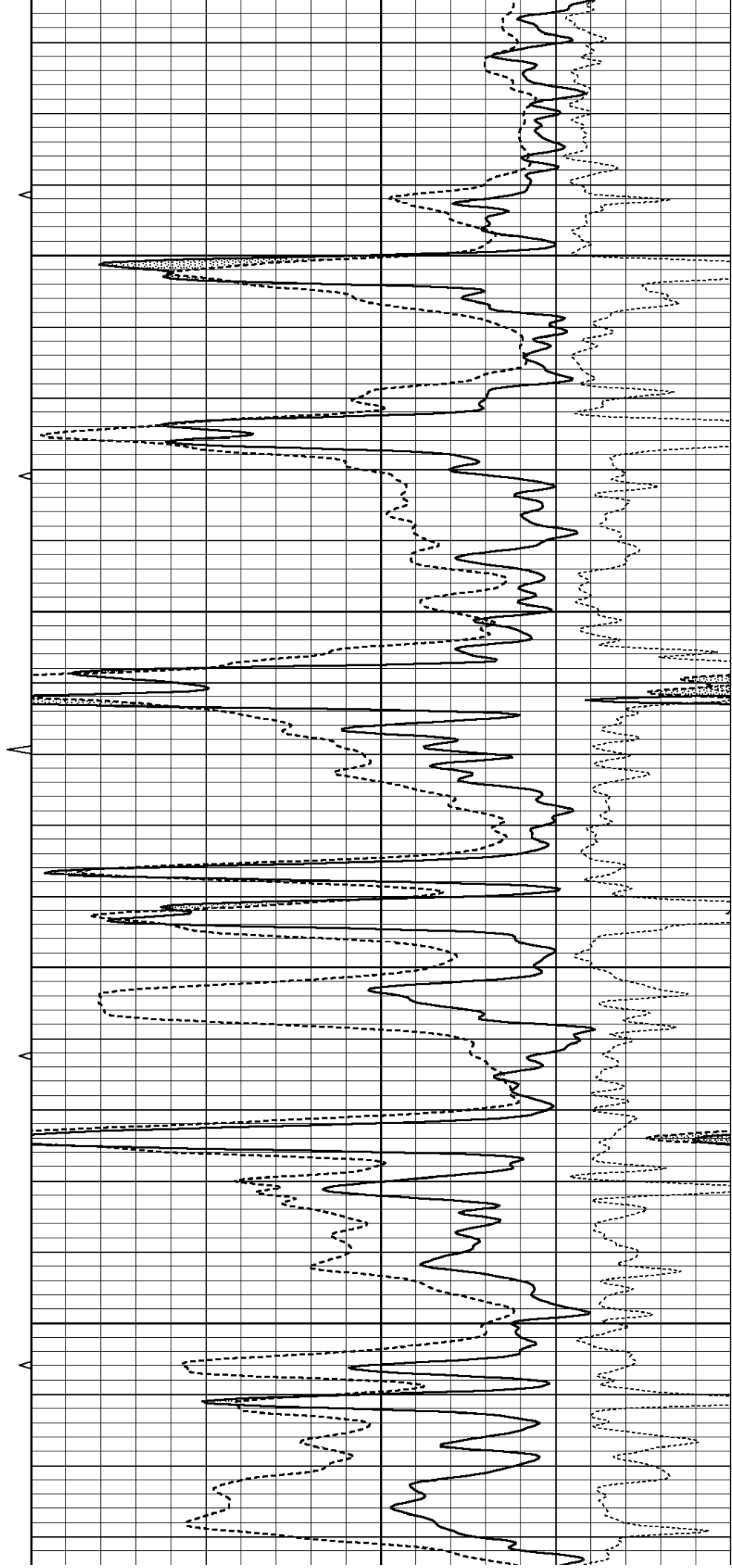


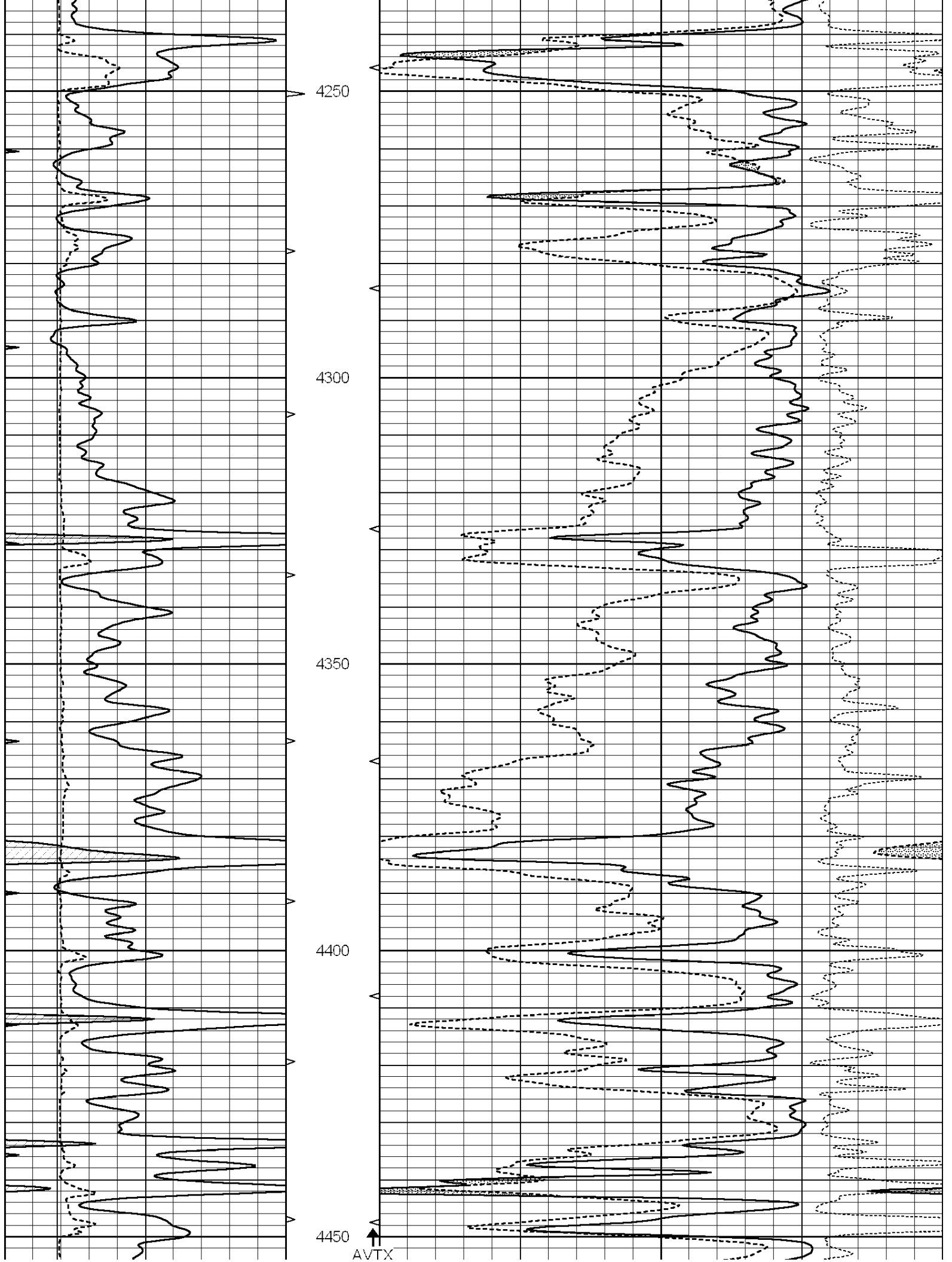
4050

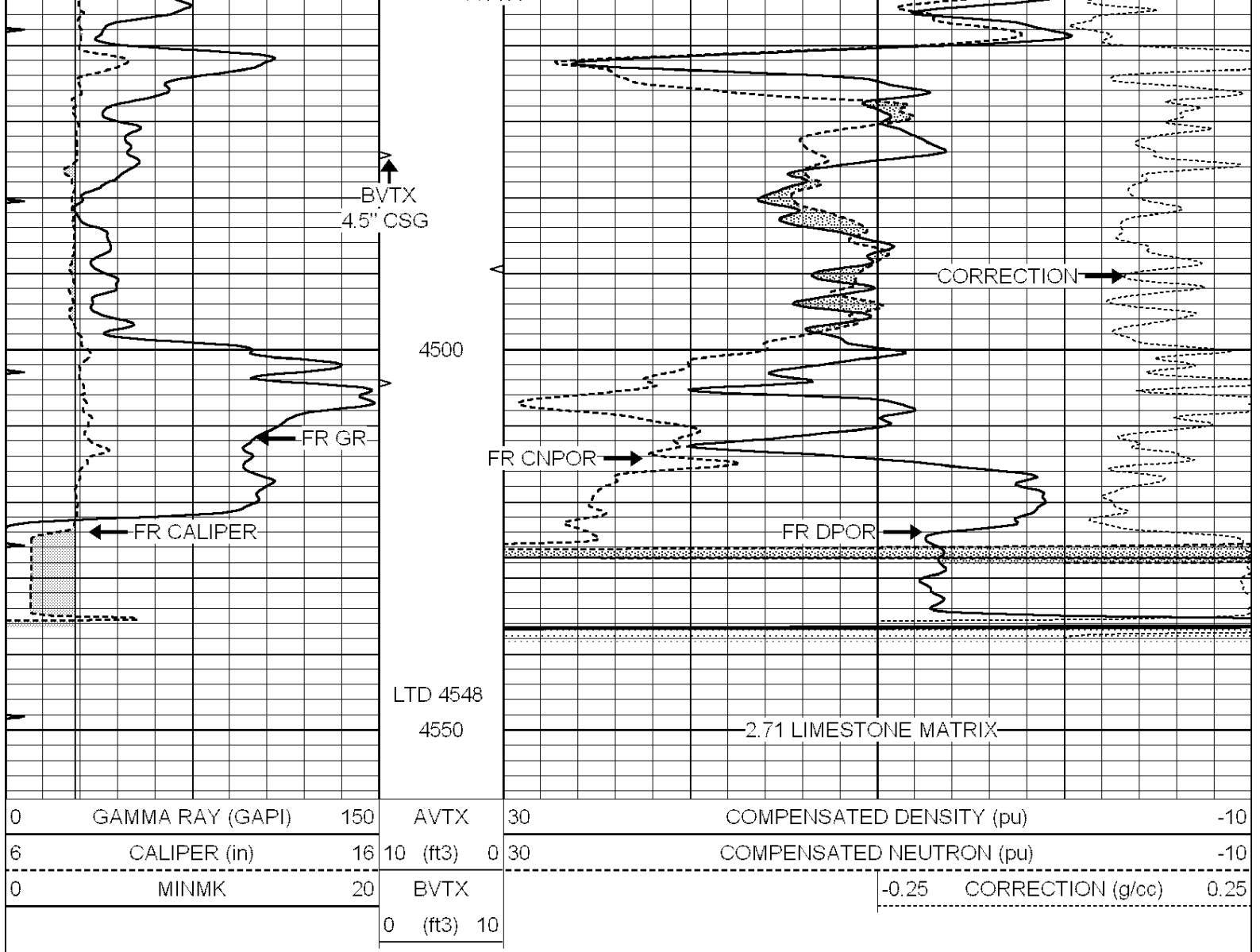
4100

4150

4200



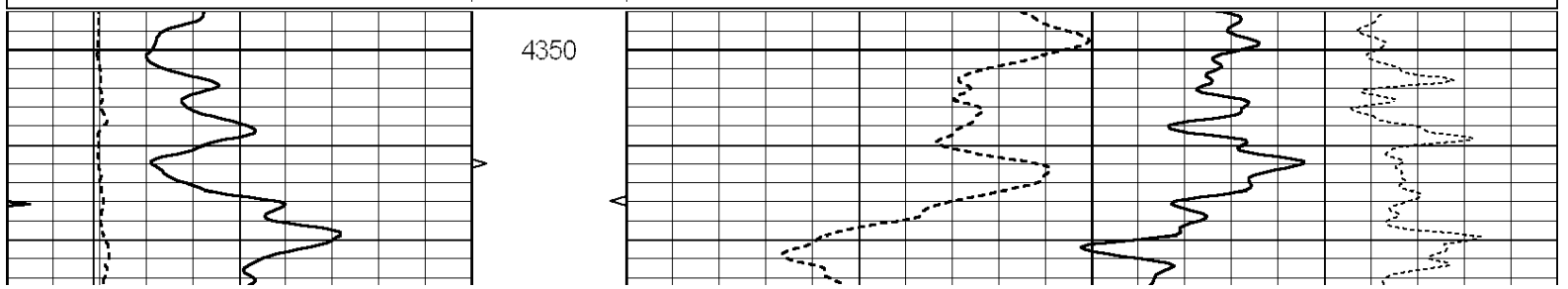


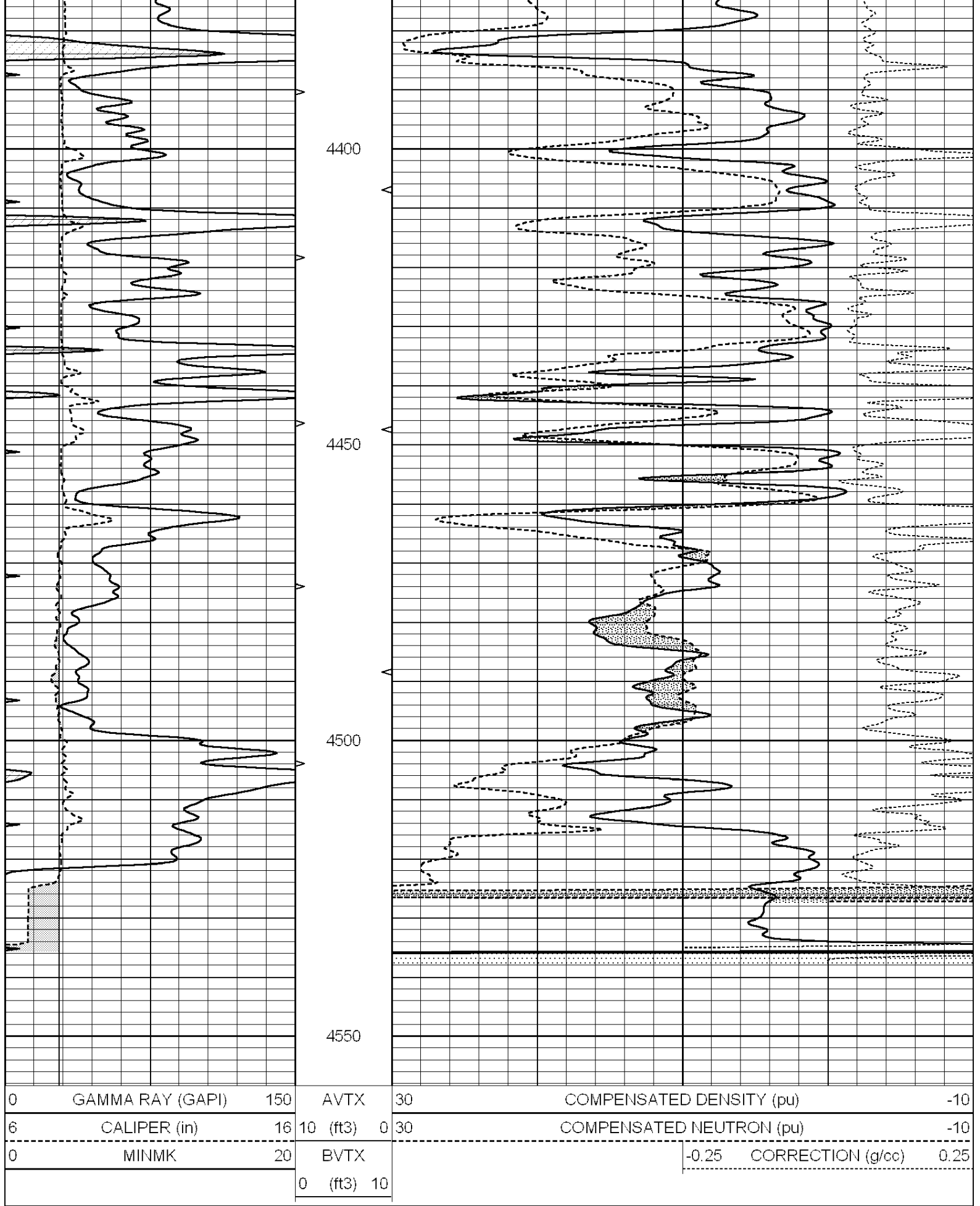


REPEAT SECTION

Database File: 011254ddn.db
 Dataset Pathname: pass3.1
 Presentation Format: _den_neu
 Dataset Creation: Fri Jun 14 08:20:08 2013 by Calc Open-Cased 090629
 Charted by: Depth in Feet scaled 1:240

0	GAMMA RAY (GAPI)	150	AVTX	30	COMPENSATED DENSITY (pu)	-10
6	CALIPER (in)	16	10 (ft3)	0 30	COMPENSATED NEUTRON (pu)	-10
0	MINMK	20	BVTX		-0.25	CORRECTION (g/cc) 0.25
			0 (ft3)	10		





Calibration Report

Database File: 011254ddn.db
 Dataset Pathname: pass4.4

Dual Induction Calibration Report

Serial-Model: PROBE8-DILG
 Surface Cal Performed: Fri Aug 01 06:33:19 2008
 Downhole Cal Performed: Mon Jul 28 11:08:27 2008
 After Survey Verification Performed: Mon Jul 28 11:08:27 2008

Surface Calibration

Loop:	Readings			References			Results	
	Air	Loop		Air	Loop		m	b
Deep	0.015	0.648	V	0.000	400.000	mmho/m	632.616	-9.730
Medium	0.029	0.796	V	0.000	464.000	mmho/m	605.049	-17.680
Internal:	Zero	Cal		Zero	Cal		m	b
Deep	0.017	0.657	V	0.000	400.000	mmho/m	625.153	-10.619
Medium	0.016	0.757	V	0.000	464.000	mmho/m	625.992	-9.739

Downhole Calibration

	Readings			References			Results	
	Zero	Cal		Zero	Cal		m'	b'
Deep	0.000	0.000	mmho/m	2.011	405.777	mmho/m	1.000	0.000
Medium	0.000	0.000	mmho/m	7.590	503.393	mmho/m	1.000	0.000
LL3		7.500	V		1500.000	Ohm-m		
		0.000	V		20.000	Ohm-m		
		-7.200	V		3800.000	mmho-m		

After Survey Verification

	Readings			Targets			Results	
	Zero	Cal		Zero	Cal		m'	b'
Deep	0.000	0.000	mmho/m	0.000	0.000	mmho/m	0.000	0.000
Medium	0.000	0.000	mmho/m	0.000	0.000	mmho/m	0.000	0.000
LL3		1.000	Ohm-m		1.000	Ohm-m		
		0.000	Ohm-m		0.000	Ohm-m		
		1.000	mmho-m		1.000	mmho-m		

Compensated Density Calibration Report

Serial-Model: GEAR4-GEARHART
 Source / Verifier: 143 / 143
 Master Calibration Performed: Mon Mar 19 19:07:19 2012

Master Calibration

	Density		Far Detector	Near Detector	
Magnesium	1.710	g/cc	1015.91	497.51	cps
Aluminum	2.600	g/cc	227.67	350.20	cps
Spine Angle = 76.79			Density/Spine Ratio = 0.579		
	Size		Reading		
Small Ring	8.00	in	3.21	V	
Large Ring	14.00	in	5.46	V	

Compensated Neutron Calibration Report

Serial Number: 6I
 Tool Model: G

CALIBRATION

Detector	Readings		Target		Normalization
Short Space	1.00	cps	1.00	cps	1.0000
Long Space	1.00	cps	1.00	cps	1.0000

Gamma Ray Calibration Report

Serial Number:	#8	
Tool Model:	OPEN	
Performed:	Mon Jun 13 16:56:43 2011	
Calibrator Value:	150.0	GAPI
Background Reading:	0.0	cps
Calibrator Reading:	175.0	cps
Sensitivity:	0.8371	GAPI/cps