

Tucker
ENERGY SERVICES

PHASED INDUCTION
SHALLOW FOCUS SP LOG

Company COLT ENERGY INC
Well CLINE #J-5
Field ALLEN
Country KANSAS
State USA
Country API No. 15-001-30849-0000

File No : TUL-59176
Company : COLT ENERGY INC
Well : CLINE #J-5
Field :
Country : ALLEN
State : KANSAS
Country : KANSAS
API No : USA
API No : 15-001-30849-0000

Location :
1941' FNL & 1407' FEL
SE NE SW NE

LSD : Sect : 16 Twp : 24S Rge : 18E

Date	12-04-2013		
Run Number	1		
Depth--Driller	999.0	Ft	
Depth--Logger	999.0	Ft	
First Reading	999.0	Ft	
Last Reading	20.0	Ft	
Casing--Driller	20.0	Ft	
Casing--Logger	20.0	Ft	
Bit Size	6.750	In	
Casing Size	8.625	In	
Hole Fluid Type	CHEM-GEL		
Density	0.0		
Fluid Loss	0.0		
PH/Viscosity	0.0		0.0
Sample Source	MEASURED		
RM@Measured Temp.	5.000	@ 75 F	
RMF@Measured Temp	4.000	@ 75 F	
RMG@Measured Temp.	6.000	@ 75 F	
Source RMF/RMC	CALCULATED/CALCULATED		
RM@BHT	4.550	@ 83 F	
Time Circulation Stopped	12-04-2013 9:00 am		
Max Recorded Temp.	83		F
Equipment/Base	127		TULSA
Recorded By	SHELDON TYLER		
Witnessed By	REX ASHLOCK		

The customer is hereby warned that by providing the log data herein, T. E. S. does not agree to provide any interpretation of log data, conversion of log data to physical rock parameters or recommendations. T. E. S. does not guarantee or warrant either expressly or impliedly, the accuracy of any interpretation of log data, conversion of log data to physical rock parameters or recommendations which may be given by T. E. S. personnel. Any interpretation, conversion or recommendation is not part of the consideration for the agreement between the parties and is not part of any part of the charge by T. E. S. for its services. Any user of the log data is warned that said user is not entitled to rely on interpretations, conversions or recommendations as aforesaid.

Bitsize Intervals		Casing Strings			
Size (In)	Bottom (Ft)	Size (In)	Weight (Lbs)	Bottom (Ft)	Top (Ft)
6.750	999.00	8.625	32.00	20.00	0.00

Run Number	1	
Date	12-04-2013	
Date/Time On Bottom	12-04-2013 11:00 am	
Depth to Fluid	0.0	Ft
Salinity	0.000	
RMF@BHT	3.640	@ 83 F
RMC@BHT	5.460	@ 83 F

Run Number 1

Comments

ALL PRESENTATIONS AS PER CUSTOMER REQUEST
 GRT, CNT, LDT, AND PIT RUN IN COMBINATION.
 CALIPERS ORIENTED ON X-Y AXIS.
 2.71 G/CC USED TO CALCULATED POROSITY.
 ANNULAR HOLE VOLUME CALCULATED USING 4.5" PRODUCTION CASING.
 PHIN IS CALIPER CORRECTED
 HIGH RESOLUTION LOGS PRESENTED FROM TD TO SC

CUSTOMER REQUEST NO REPEAT

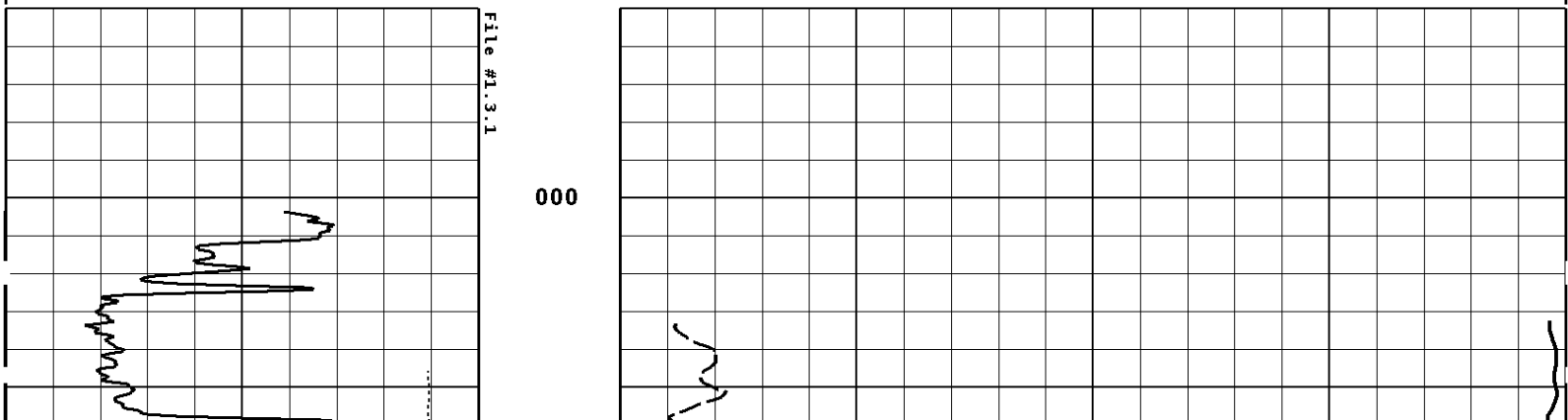
GRT: GRP, GRX
 CNT: PHIN, CLCNIN, PHXN
 LDT: PORL, LCORN, PECLN, LDENN, PORLLS, CLLDIN, PRXL, PECLX, LDENNX, LCORX
 PIT: ILD, ILM, SPU, SFLAEC

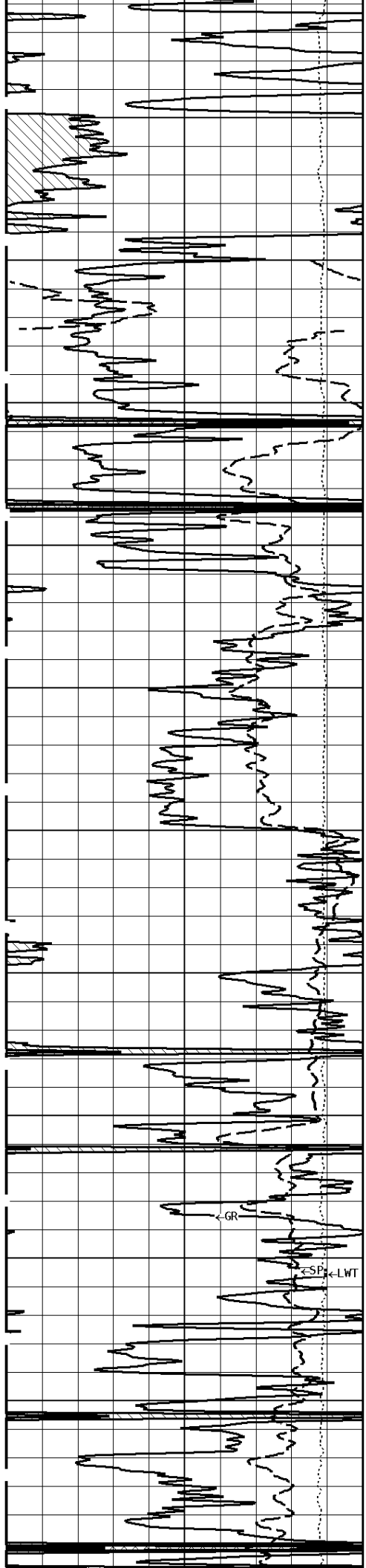
OPERATORS:
 J. JOHNSON
 D. HOPPER

Well File: COLT ENERGY CLINE J-5 DEC4 STK Scale: 1:600 Format: DIL-600
 Segment: V1.D3.S1 FINAL MAIN Acquired: Not Available
 Reference: 0 Processed: Not Available

TENSION LBS 10000 ----- 0	DEEP INDUCTION OHMM 0.0 500.0 0.0 ----- 50.0	
SPONTANEOUS POTENTIAL mV → ← 25	SHALLOW FOCUSED RESISTIVITY OHMM 0.0 500.0 0.0 ----- 50.0	
GAMMA RAY API UNITS 150 0 300 150 0	DEEP CONDUCTIVITY MMHO 2000 1000 1000 0	

1:600 MAIN SECTION





100

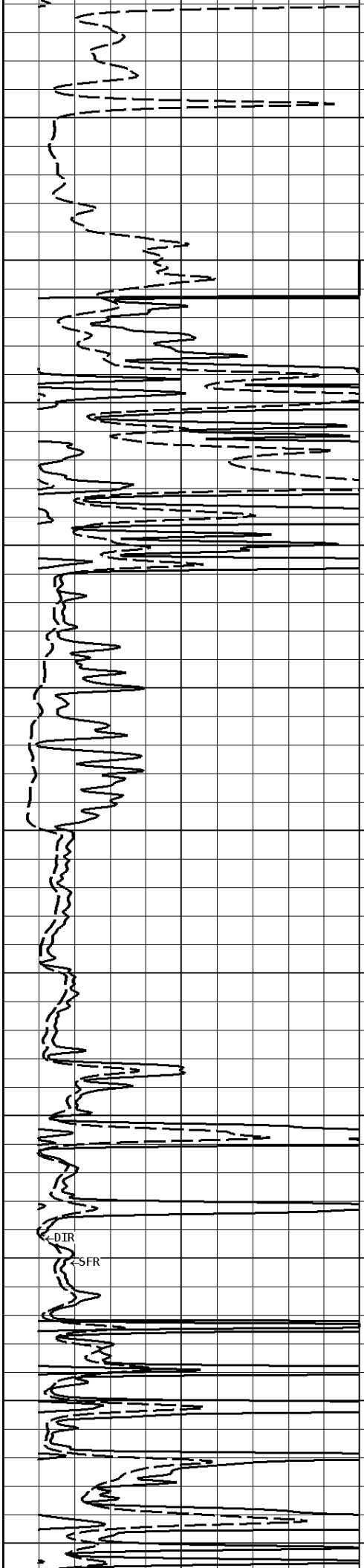
200

300

400

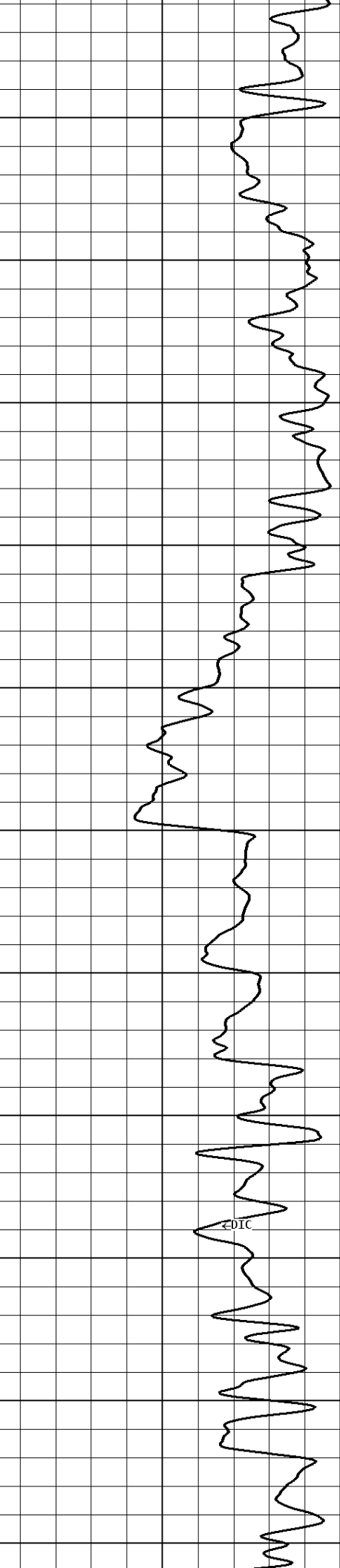
500

600

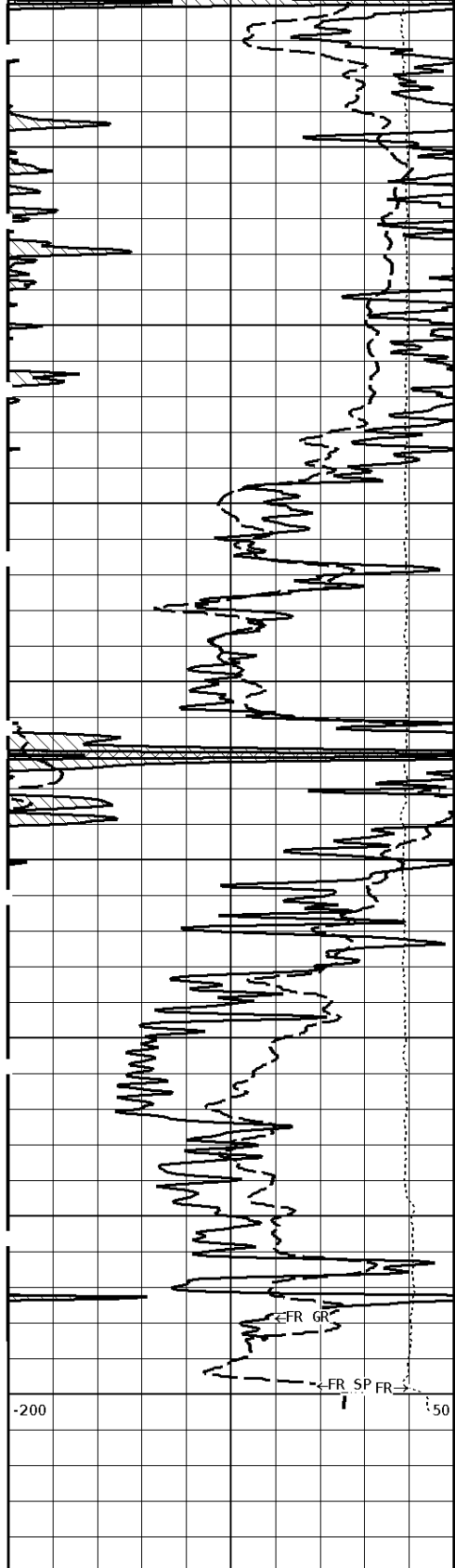


DIR

SFR



DIC

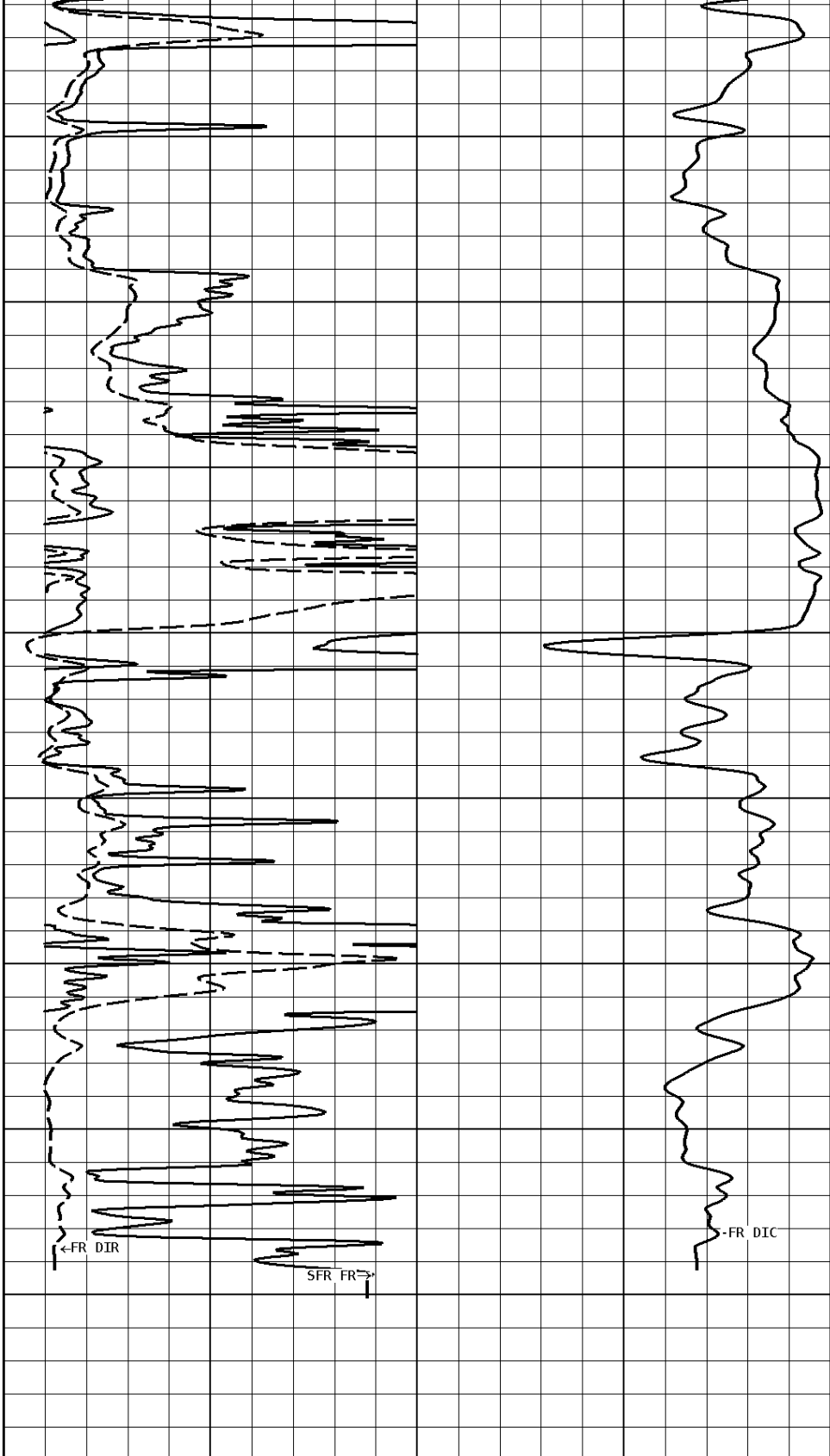


700

800

900

999

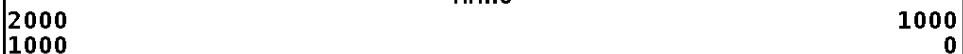


1:600 MAIN SECTION

**GAMMA RAY
API UNITS**



**DEEP CONDUCTIVITY
MMHO**



**SPONTANEOUS POTENTIAL
mV**



**SHALLOW FOCUSED RESISTIVITY
OHMM**



TENSION
LBS
10000 0

DEEP INDUCTION
OHMM
0.0 500.0
0.0 50.0

Well File: COLT ENERGY CLINE J-5 DEC4 STK Scale: 1:240 Format: DIL-240
 Segment: V1.D3.S1 FINAL MAIN Acquired: Not Available
 Reference: 0 Processed: Not Available

SPONTANEOUS POTENTIAL
mV
→ | ← 25

DEEP INDUCTION
OHMM
0.2 2000.0

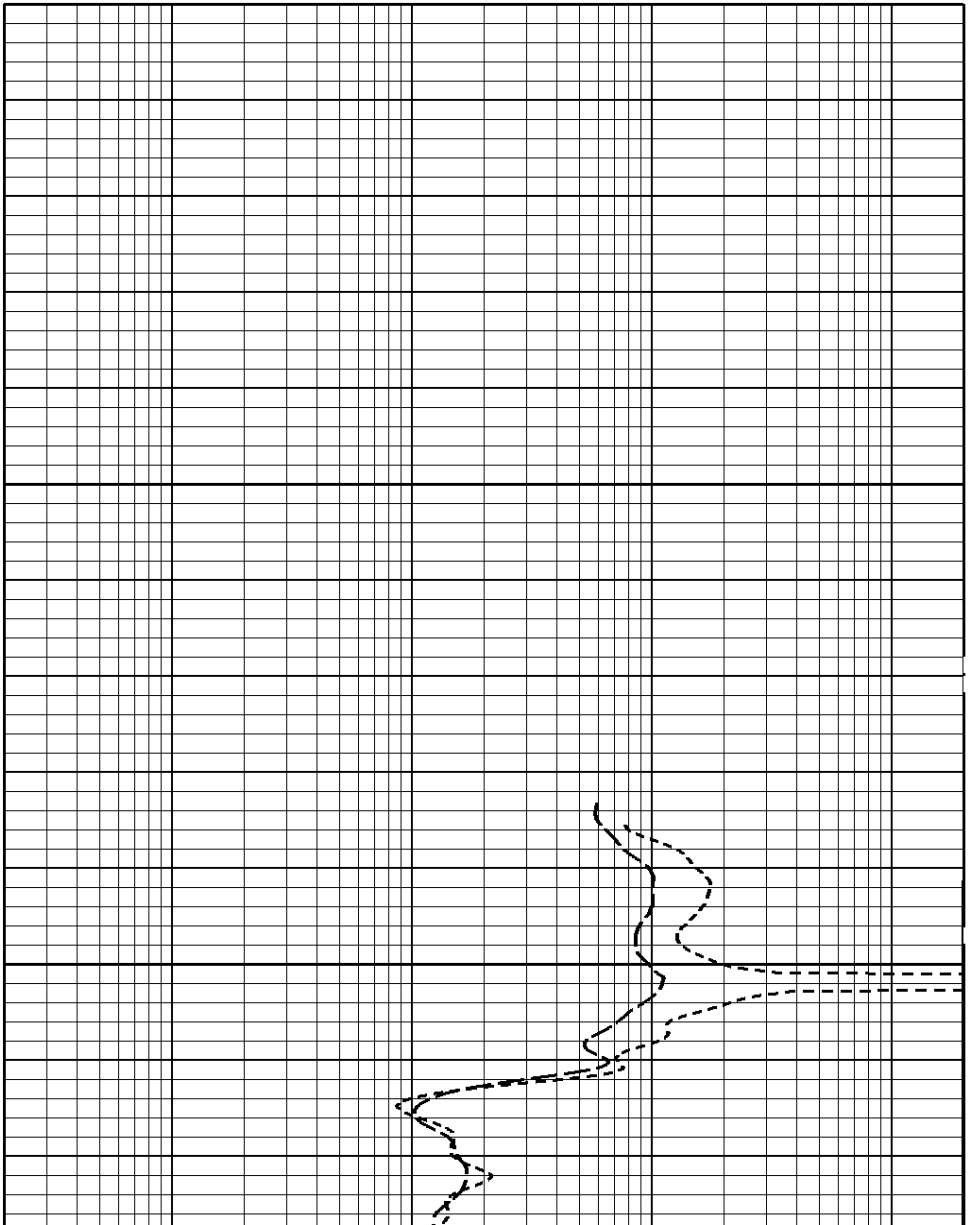
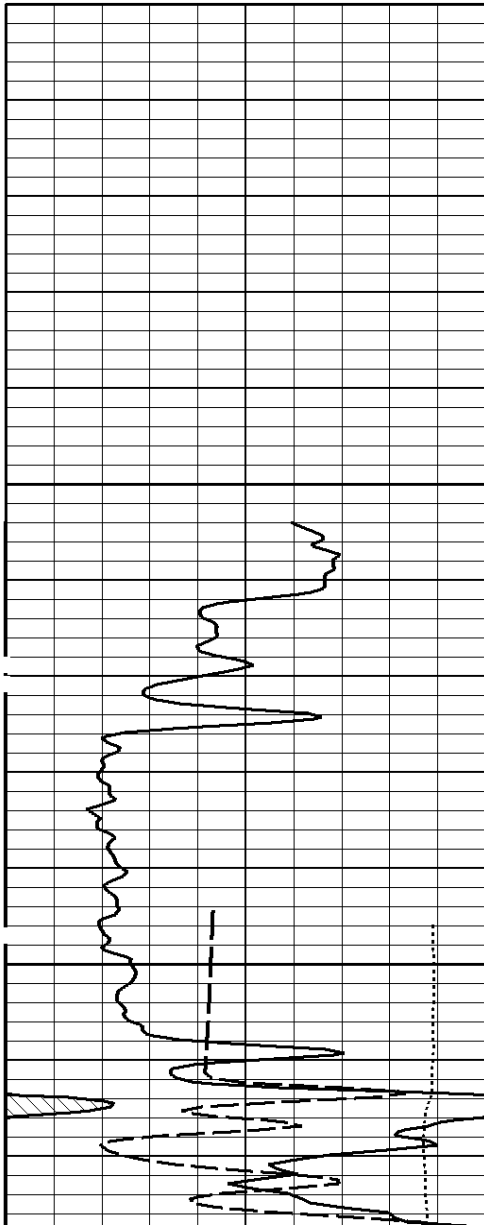
TENSION
LBS
10000 0

MEDIUM INDUCTION
OHMM
0.2 2000.0

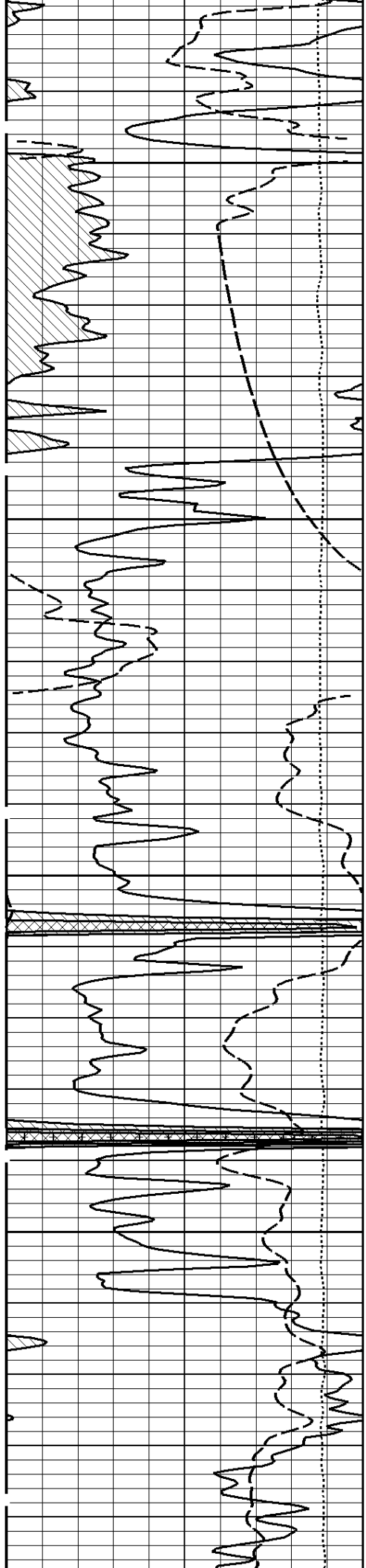
GAMMA RAY
API UNITS
150 0 300 150

SHALLOW FOCUSED RESISTIVITY
OHMM
0.2 2000.0

1:240 MAIN SECTION

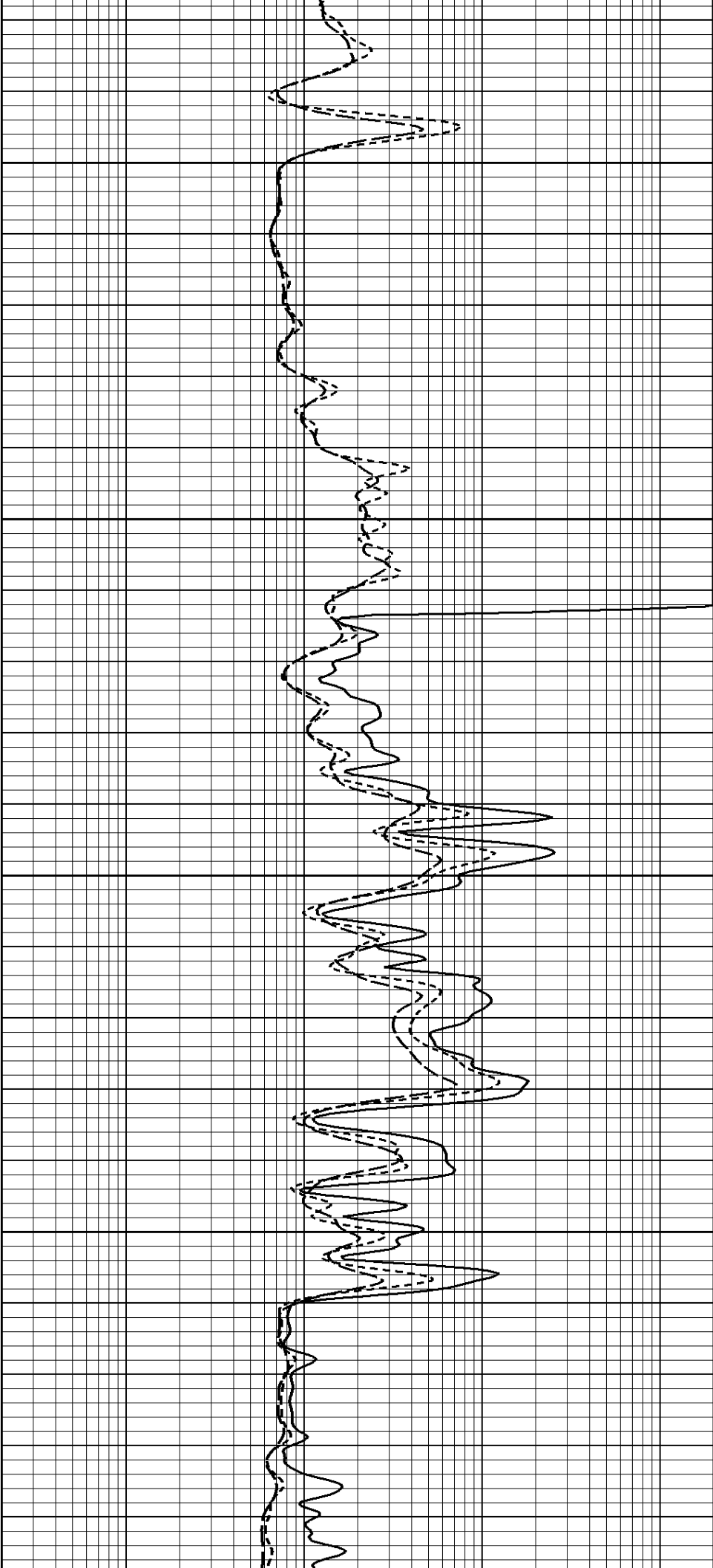


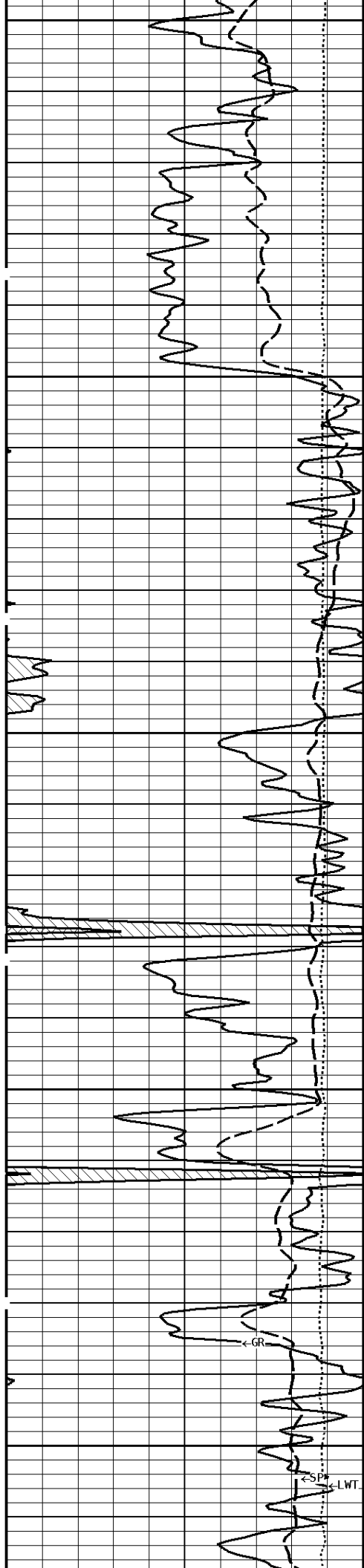
000



100

200

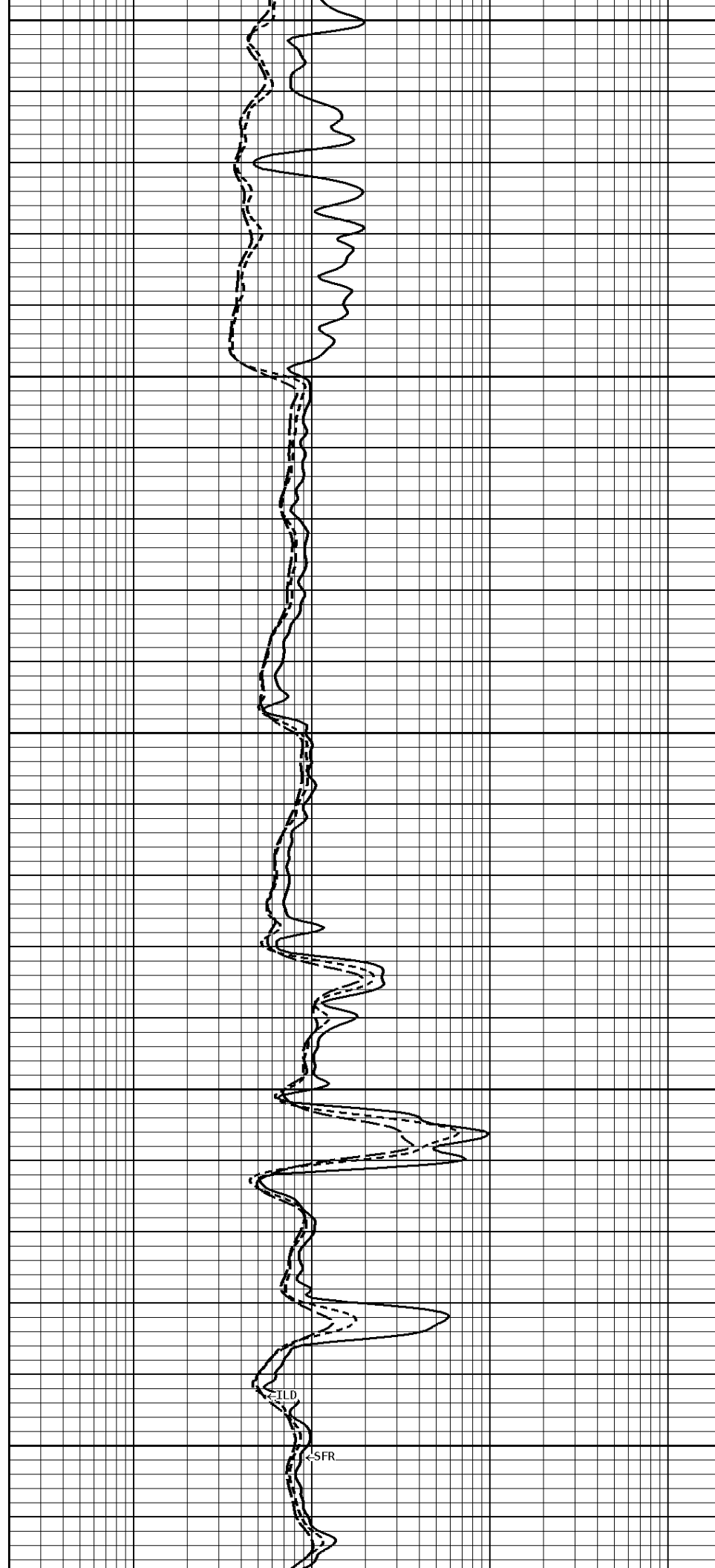




300

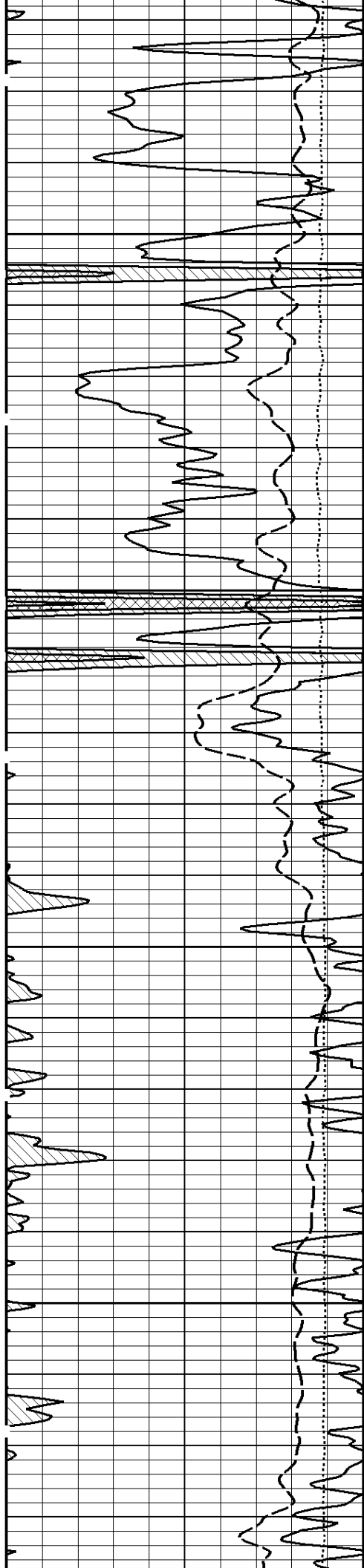
400

500



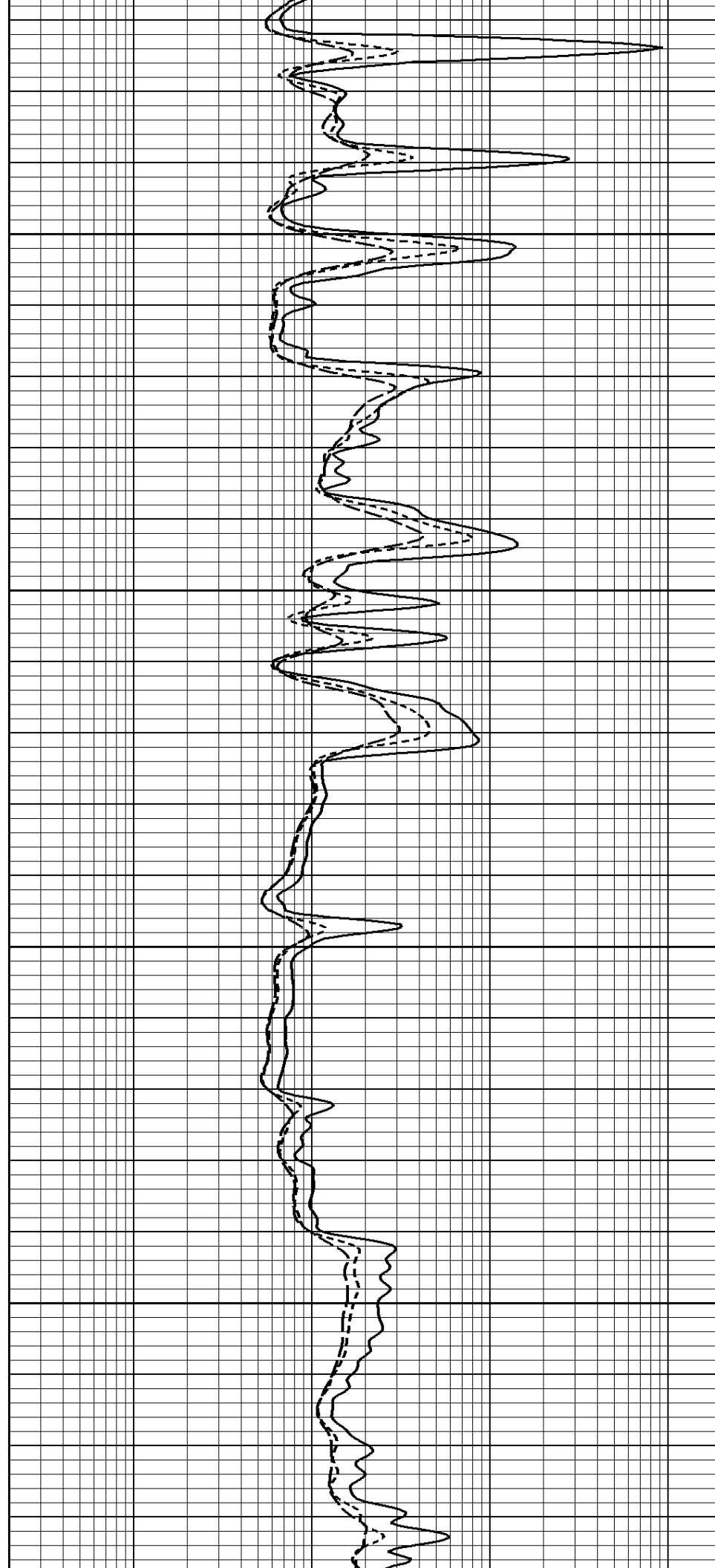
<ILD

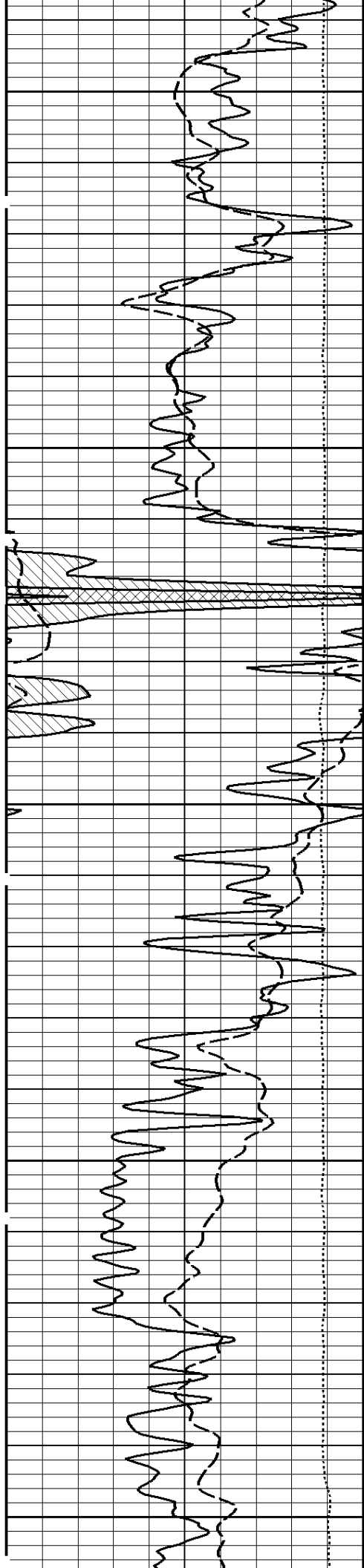
<SFR



600

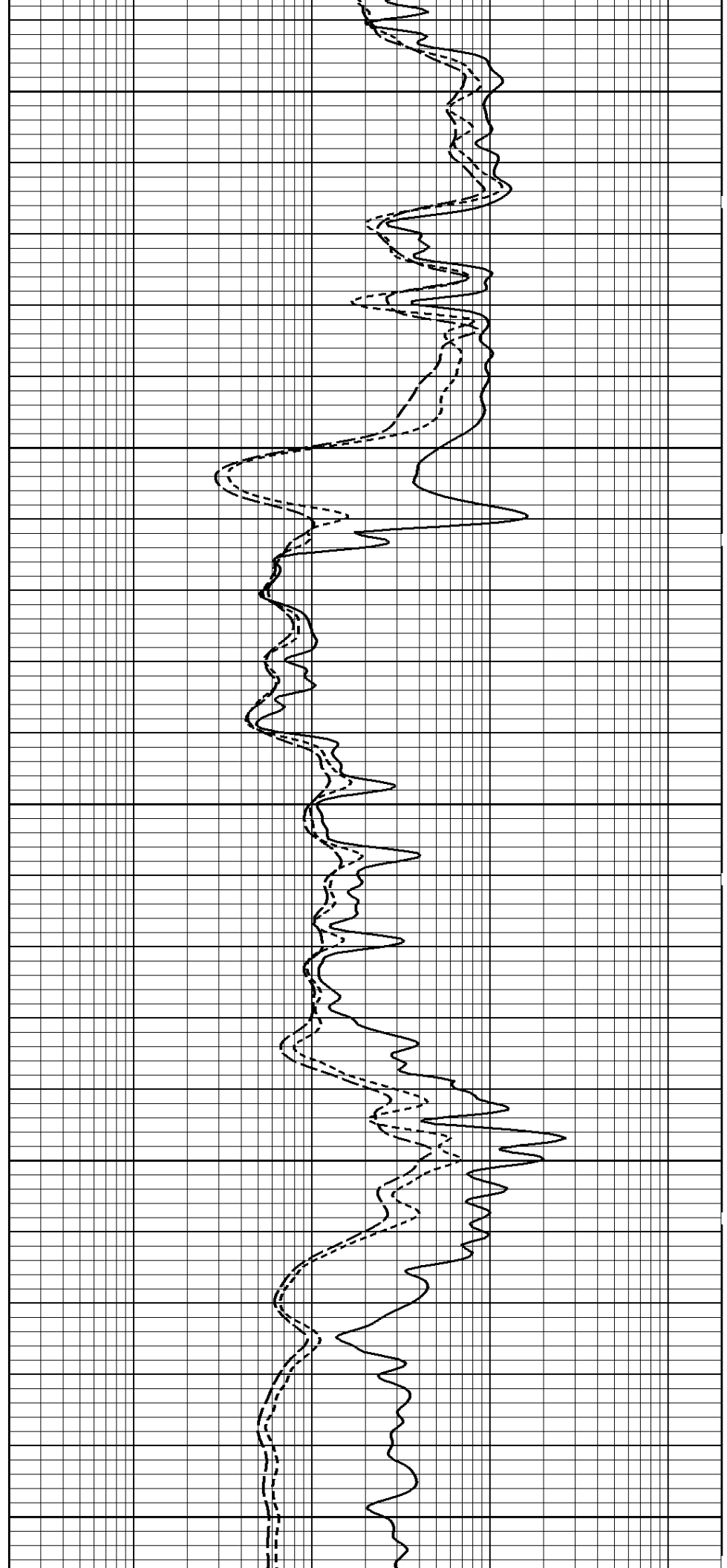
700

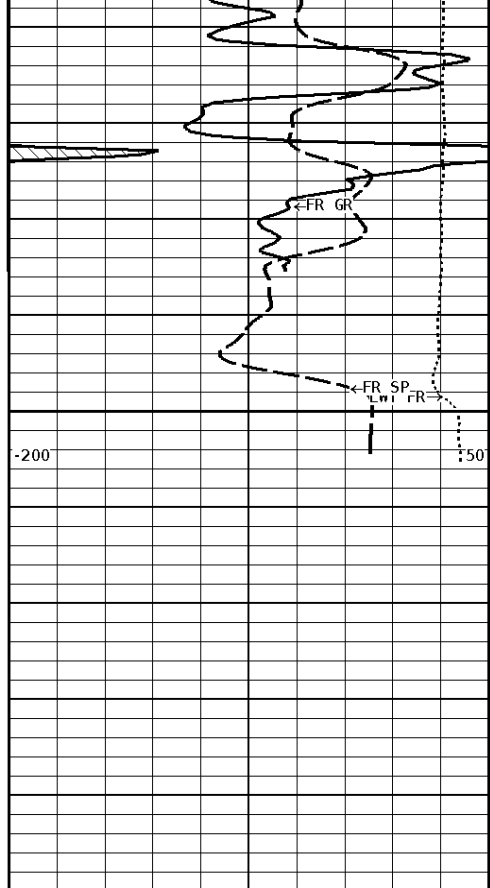




800

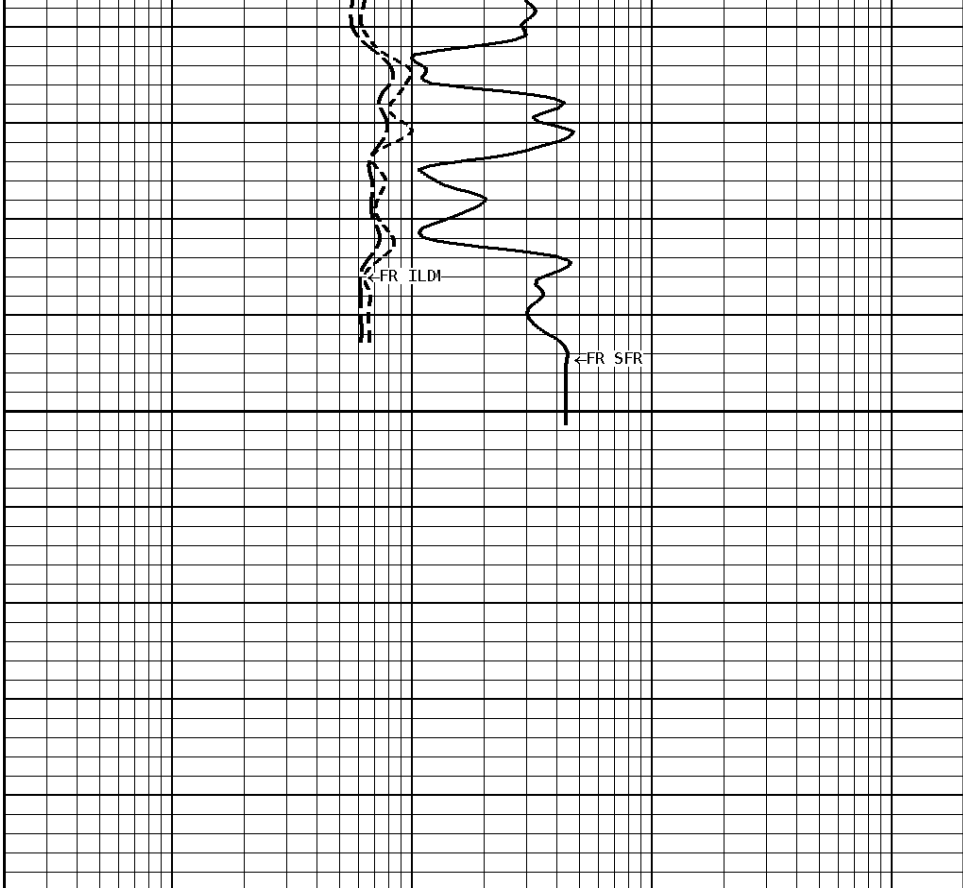
900





999

File #1.3.1



1:240 MAIN SECTION

GAMMA RAY API UNITS	
150 0	300 150
TENSION LBS	
10000	0
SPONTANEOUS POTENTIAL mV	
→	←25

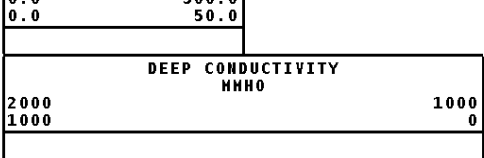
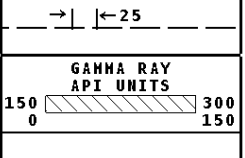
SHALLOW FOCUSED RESISTIVITY OHMM	
0.2	2000.0
MEDIUM INDUCTION OHMM	
0.2	2000.0
DEEP INDUCTION OHMM	
0.2	2000.0

* Borehole Zone Factors *

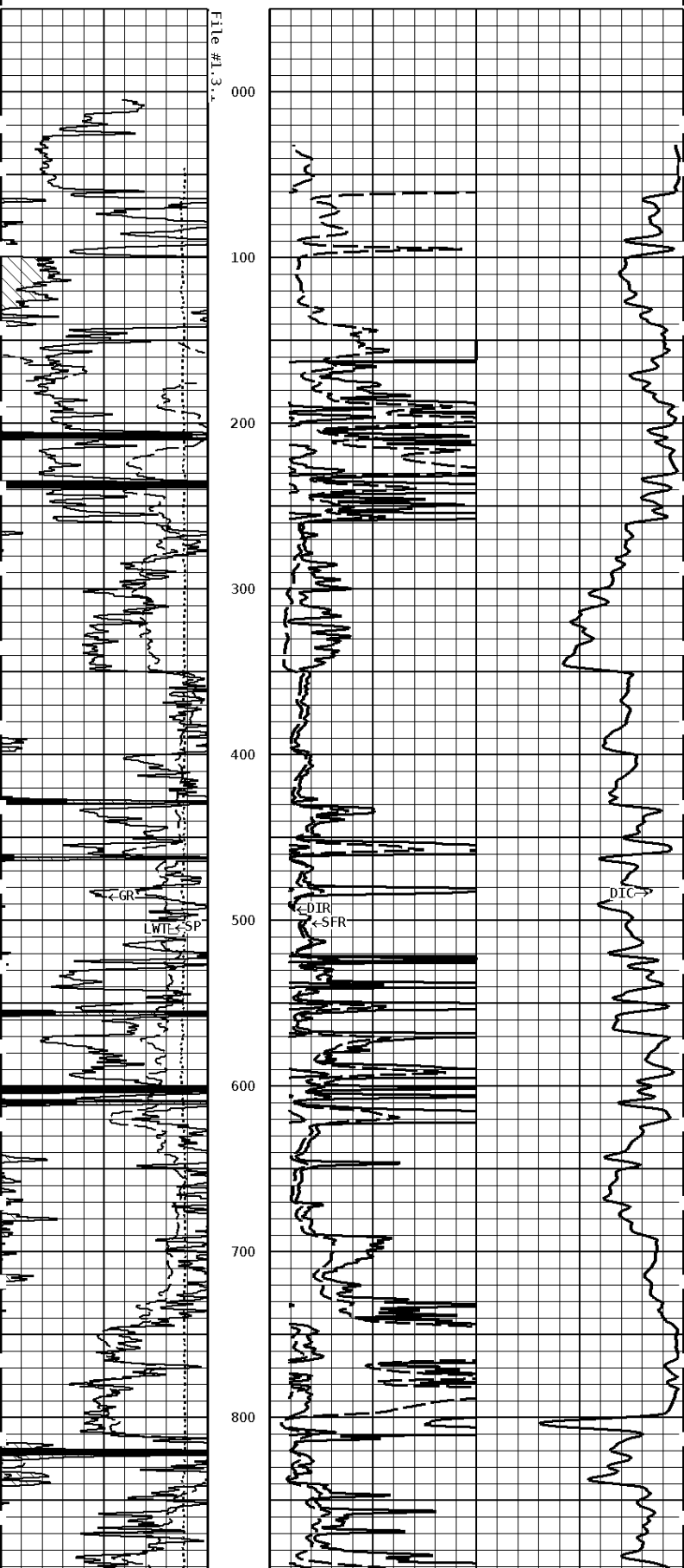
Zone 1 99999.0 to 0.0 Feet		
Temperature Gradient	1.00	DFHF
BHT Depth	999.000	ft
Borehole Temperature	83.0	degF
Drill Bit Size	6.750	in
Casing Diameter	4.500	in
Resistivity Of Mud	5.000	ohm/m
Resistivity Of Mud Temperature	75.00	degF
Standoff	1.5	

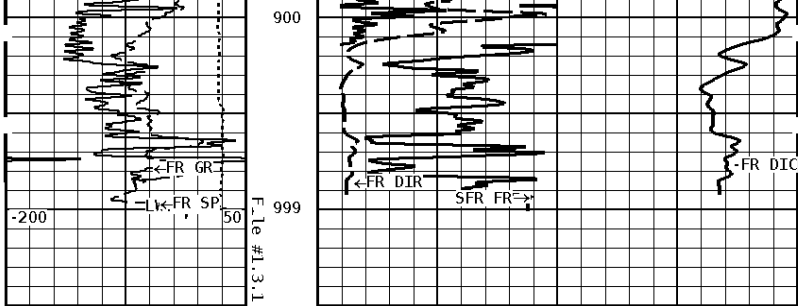
Well File: COLT ENERGY CLINE J-5 DEC4 STK Scale: 1:1200 Format: DIL1200
 Segment: V1.D3.S1 FINAL MAIN Acquired: Not Available
 Reference: 0 Processed: Not Available

TENSION LBS	DEEP INDUCTION OHMM
10000	0.0 500.0
0	0.0 50.0
SPONTANEOUS POTENTIAL mV	SHALLOW FOCUSED OHMM
	0.0 500.0



1:1200 MAIN SECTION





1:1200 MAIN SECTION

GAMMA RAY API UNITS 150 300 0 150	DEEP CONDUCTIVITY MMHO 2000 1000 1000 0
SPONTANEOUS POTENTIAL mV → ← 25	SHALLOW FOCUSED OHMM 0.0 500.0 0.0 50.0
TENSION LBS 10000 0	DEEP INDUCTION OHMM 0.0 500.0 0.0 50.0



Company: COLT ENERGY INC
 Well: CLINE #J-5
 Location: 1941' FNL & 1407' FEL
 Logged: 12-04-2013
 K.B. Elev: 0.0 Ft