



Pioneer Energy Services

# Microresistivity Log

15-051-26,644-00-00

API No.

Company **Staab Oil Company**  
 Well **Vonfeldt Staab #4**  
 Field **Crathorne Northwest**  
 County **Eljis** State **Kansas**

Location  
 NW NE SE NE  
 1640' FNL & 370' FEL

Sec: 19 Twp: 12S Rge: 19W

Other Services  
 CNL/CDL  
 DIL

Permanent Datum Ground Level Elevation 2196  
 Log Measured From Kelly Bushing 5 Ft. Above Perm. Datum  
 Drilling Measured From Kelly Bushing

Elevation  
 K.B. 2201  
 D.F.  
 G.L. 2196

Date	12/11/2013	
Run Number	Two	
Depth Driller	3920	
Depth Logger	3919	
Bottom Logged Interval	3918	
Top Log Interval	3200	
Casing Driller	8.625 @ 229	
Casing Logger	228	
Bit Size	7.875	
Type Fluid in Hole	Chemical	
Salinity, ppm CL	900	
Density / Viscosity	8.8 60+	
pH / Fluid Loss	10.0 7.8	
Source of Sample	Flowline	
Rm @ Meas. Temp	0.58 @ 54	
Rmf @ Meas. Temp	0.44 @ 54	
Rmc @ Meas. Temp	0.78 @ 54	
Source of Rmf / Rmc	Charts	
Rm @ BHT	0.27 @ 115	
Operating Rig Time	3 1/2 Hours	
Max Rec. Temp. F	115	
Equipment Number	15	
Location	Hays	
Recorded By	D.Kerr	
Witnessed By	Bob Hopkins	Todd Staab

<<< Fold Here >>>

All interpretations are opinions based on inferences from electrical or other measurements and we cannot and do not guarantee the accuracy or correctness of any interpretation, and we shall not, except in the case of gross or willful negligence on our part, be liable or responsible for any loss, costs, damages, or expenses incurred or sustained by anyone resulting from any interpretation made by any of our officers, agents or employees. These interpretations are also subject to our general terms and conditions set out in our current Price Schedule.

### Comments

Thank you for using Pioneer Energy Services  
[www.pioneerres.com](http://www.pioneerres.com)  
 785 625 3858

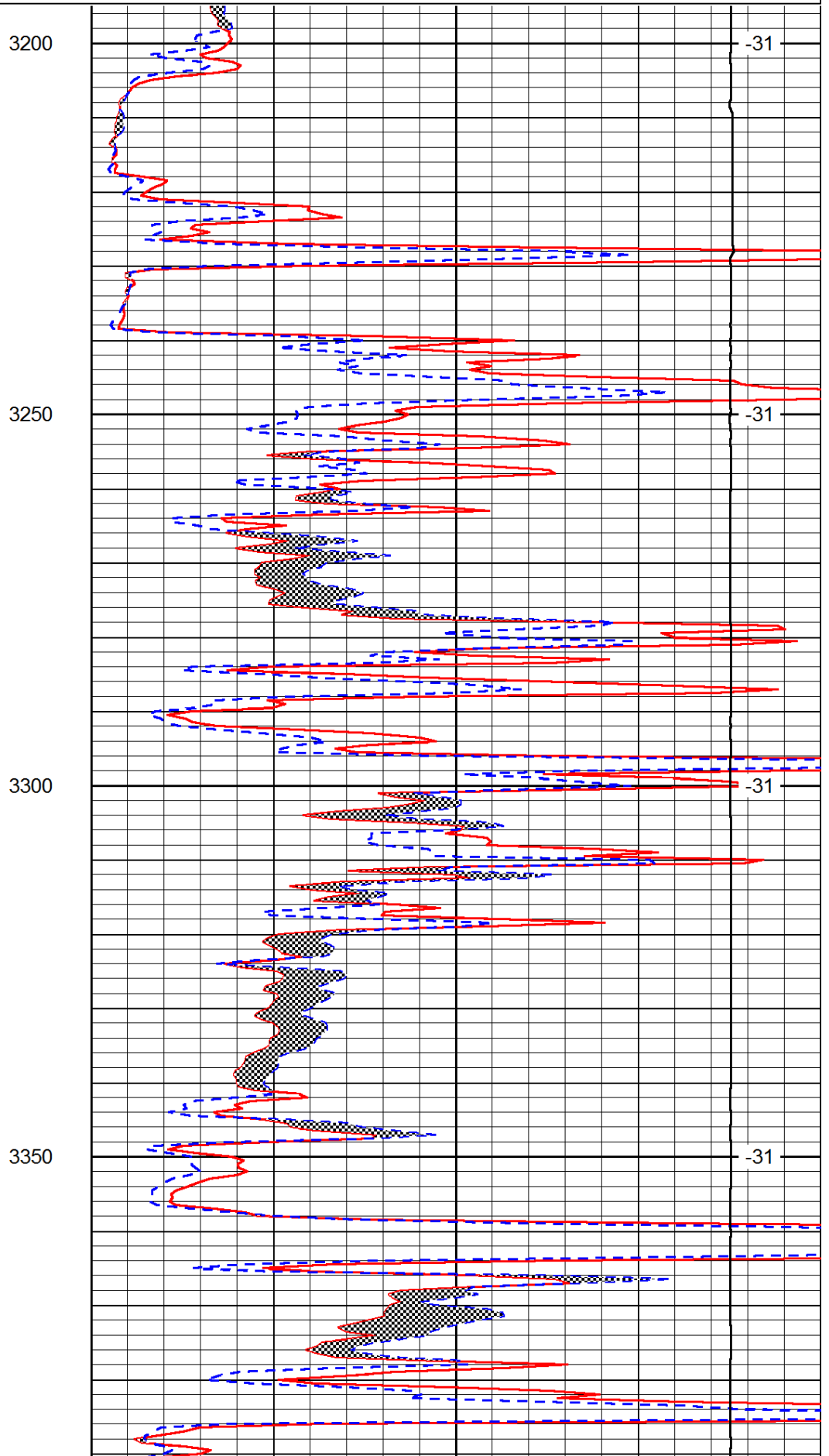
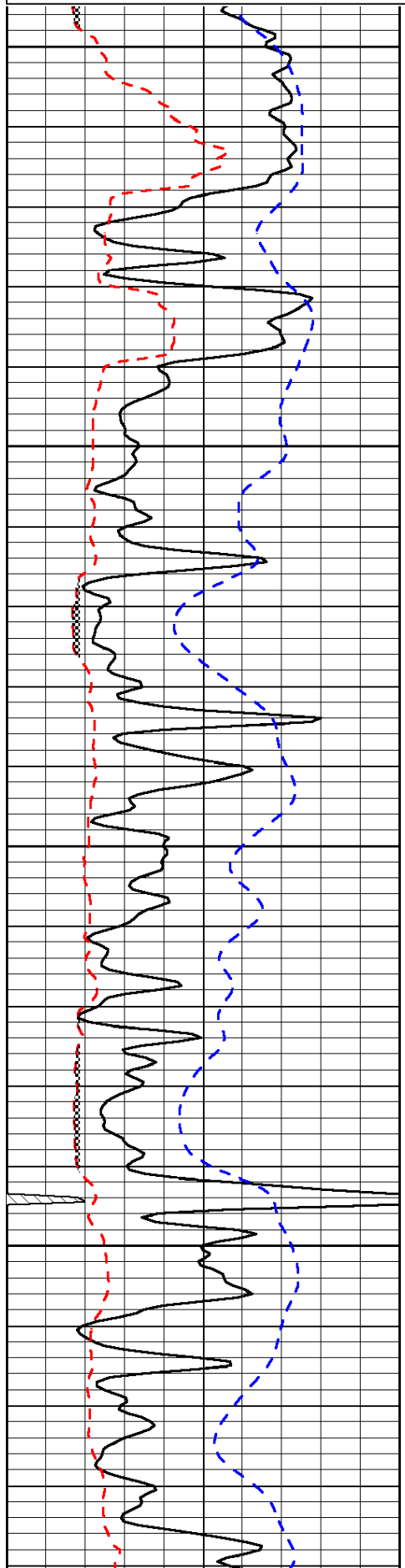
Yocemento Exit on I 70, North to Buckeye RD,  
 2 West, 1/2 South, West Into

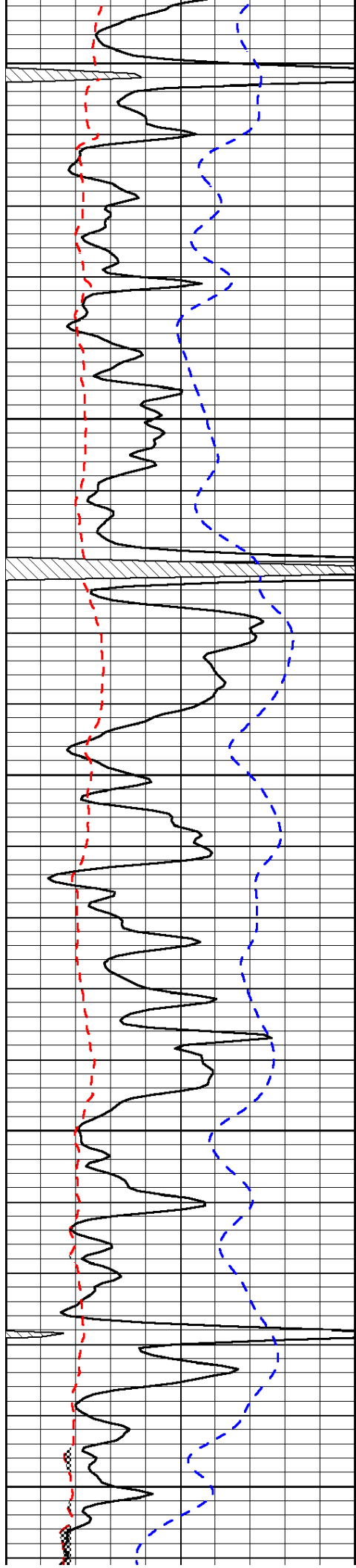
Database File: c:\warrior\data\staab\_vonfeldt staab #4\staab\_vonfeldtstaab\_4hd.db  
 Dataset Pathname: DIL\staabstk  
 Presentation Format: micro  
 Dataset Creation: Wed Dec 11 01:53:16 2013  
 Charted by: Depth in Feet scaled 1:240

0	Gamma Ray	150
6	Micro Log Caliper (GAPI)	16
-200	SP (mV)	0

0	Micro Inverse 1 X 1	40
0	Micro Normal 2"	40
15000	Line Weight	0

LSPD





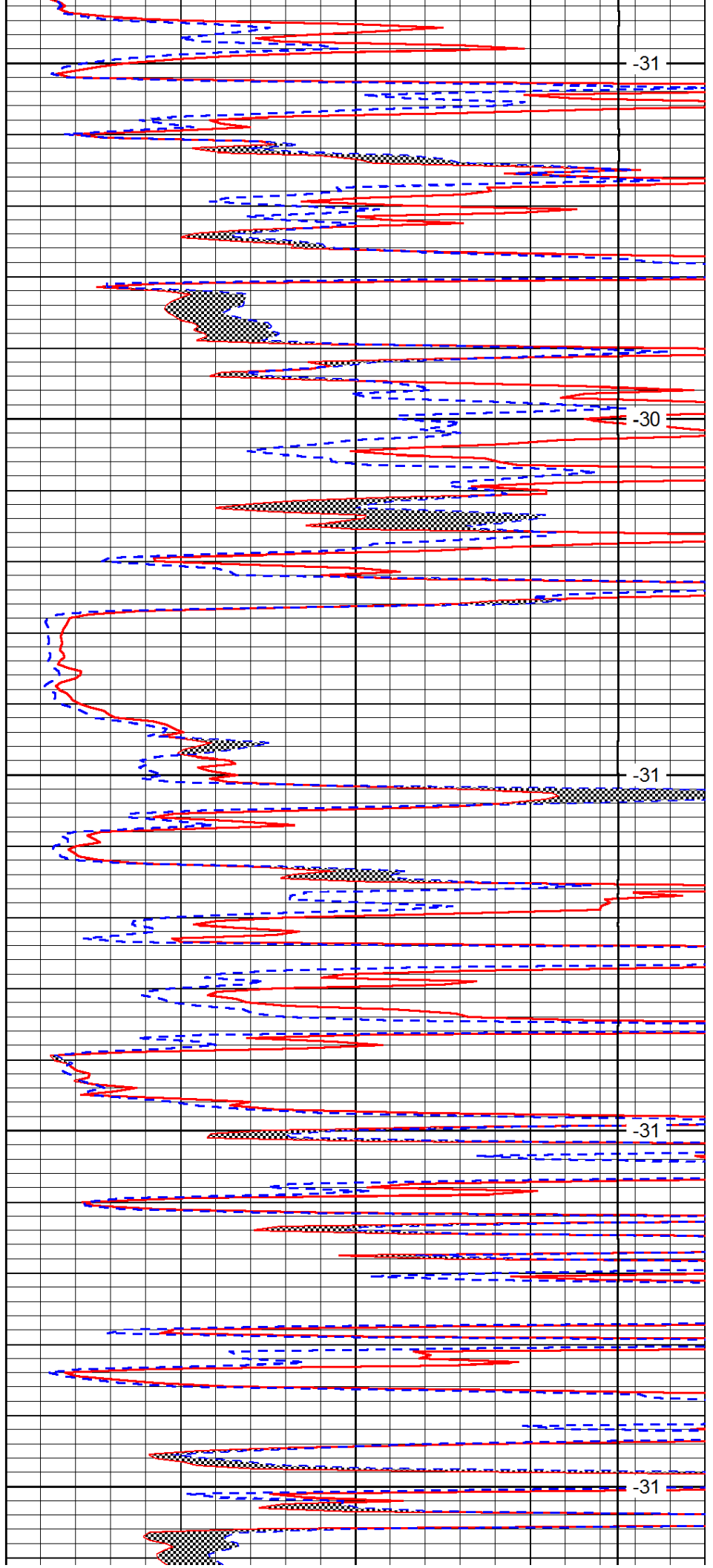
3400

3450

3500

3550

3600



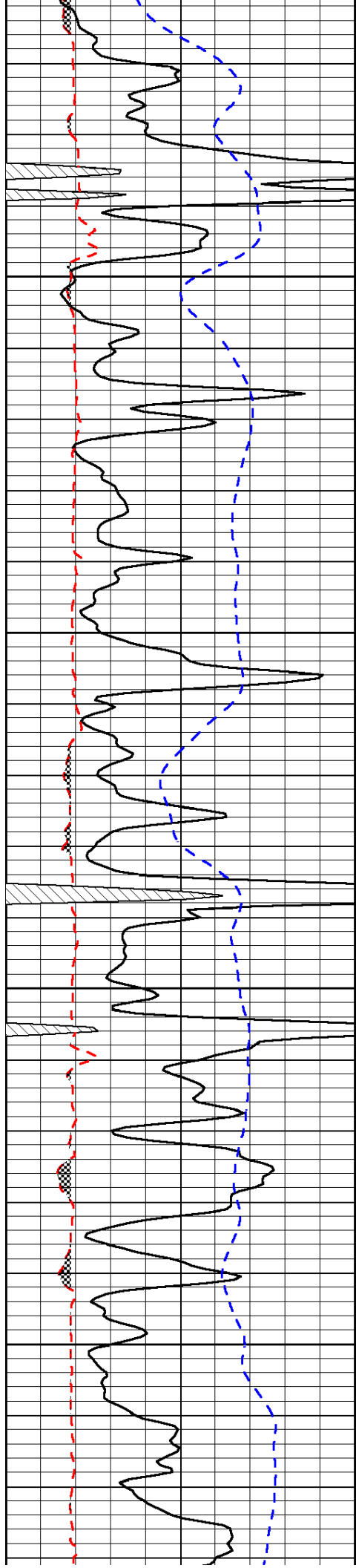
-31

-30

-31

-31

-31

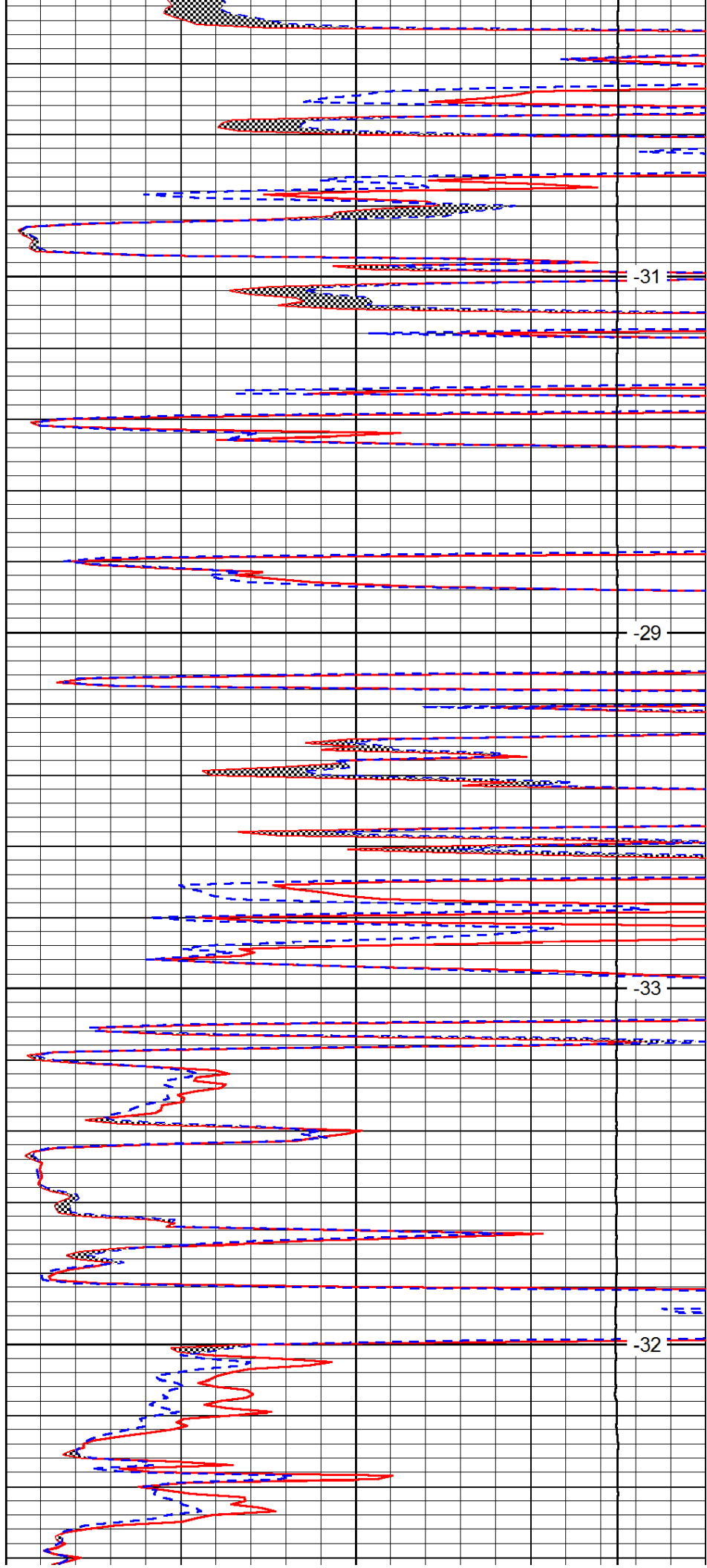


3650

3700

3750

3800

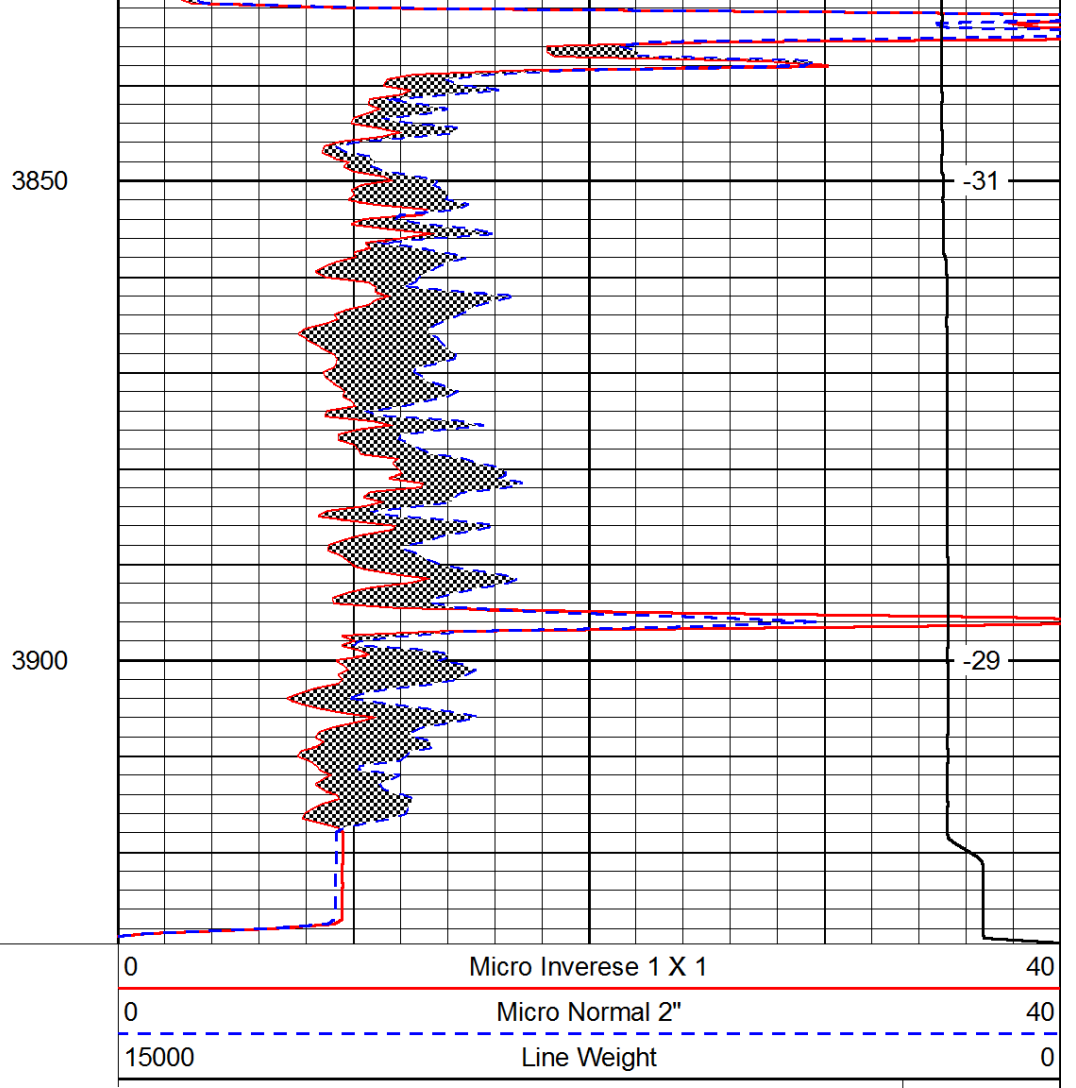
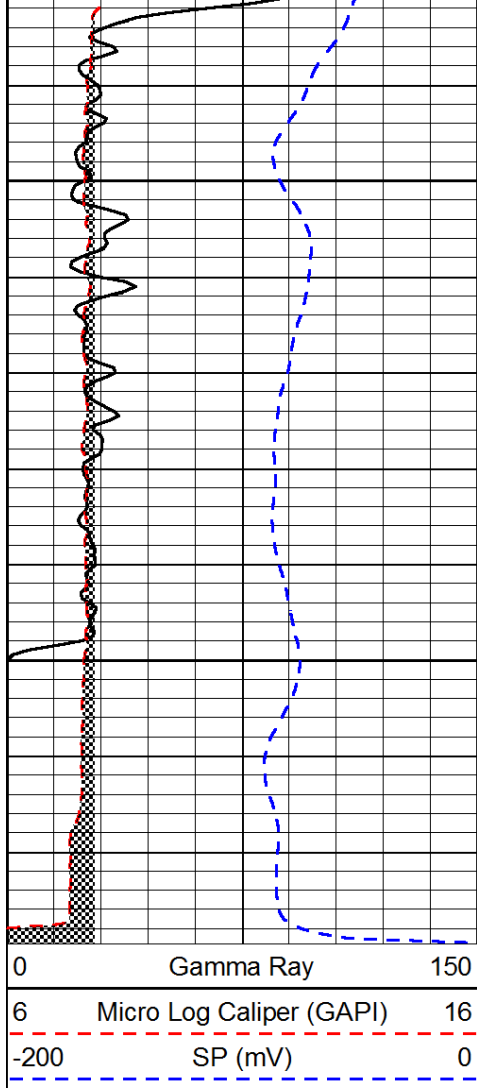


-31

-29

-33

-32



LSPD