



Pioneer Energy Services

Dual Induction Log

15-051-26,644-00-00

API No.

Company **Staab Oil Company**
 Well **Vonfeldt Staab #4**
 Field **Crathorne Northwest**
 County **Elilis** State **Kansas**

Location
 NW NE SE NE
 1640' FNL & 370' FEL

Sec: 19 Twp: 12S Rge: 19W

Other Services
 CNL/CDL
 MEL

Permanent Datum Ground Level Elevation 2196
 Log Measured From Kelly Bushing 5 Ft. Above Perm. Datum
 Drilling Measured From Kelly Bushing

Elevation
 K.B. 2201
 D.F.
 G.L. 2196

Date	12/11/2013	
Run Number	One	
Depth Driller	3920	
Depth Logger	3919	
Bottom Logged Interval	3918	
Top Log Interval	200	
Casing Driller	8.625 @ 229	
Casing Logger	228	
Bit Size	7.875	
Type Fluid in Hole	Chemical	
Salinity,ppm CL	900	
Density / Viscosity	8.8 60+	
pH / Fluid Loss	10.0 7.8	
Source of Sample	Flowline	
Rm @ Meas. Temp	0.58 @ 54	
Rmf @ Meas. Temp	0.44 @ 54	
Rmc @ Meas. Temp	0.78 @ 54	
Source of Rmf / Rmc	Charts	
Rm @ BHT	0.27 @ 115	
Operating Rig Time	3 1/2 Hours	
Max Rec. Temp. F	115	
Equipment Number	15	
Location	Hays	
Recorded By	D.Kerr	
Witnessed By	Bob Hopkins	Todd Staab

<<< Fold Here >>>

All interpretations are opinions based on inferences from electrical or other measurements and we cannot and do not guarantee the accuracy or correctness of any interpretation, and we shall not, except in the case of gross or willful negligence on our part, be liable or responsible for any loss, costs, damages, or expenses incurred or sustained by anyone resulting from any interpretation made by any of our officers, agents or employees. These interpretations are also subject to our general terms and conditions set out in our current Price Schedule.

Comments

Thank you for using Pioneer Energy Services
 www.pioneerres.com
 785 625 3858

Yocemento Exit on I 70, North to Buckeye RD,
 2 West, 1/2 South, West Into

Database File: c:\warrior\data\staab_vonfeldt staab #4\staab_vonfeldtstaab_4hd.db
 Dataset Pathname: DIL\staabstk
 Presentation Format: dil2in
 Dataset Creation: Wed Dec 11 01:53:16 2013
 Charted by: Depth in Feet scaled 1:600

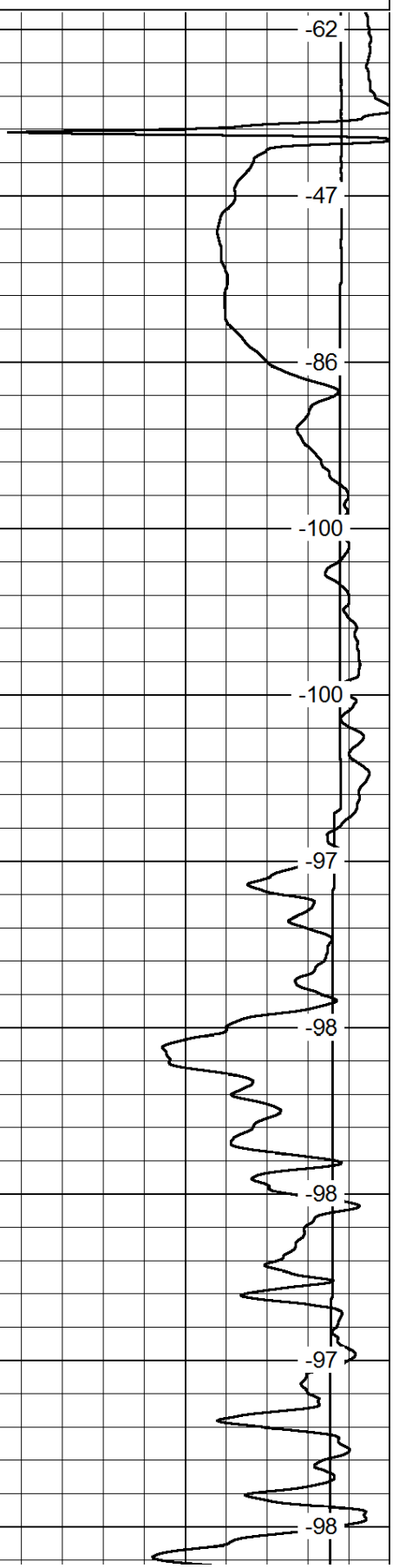
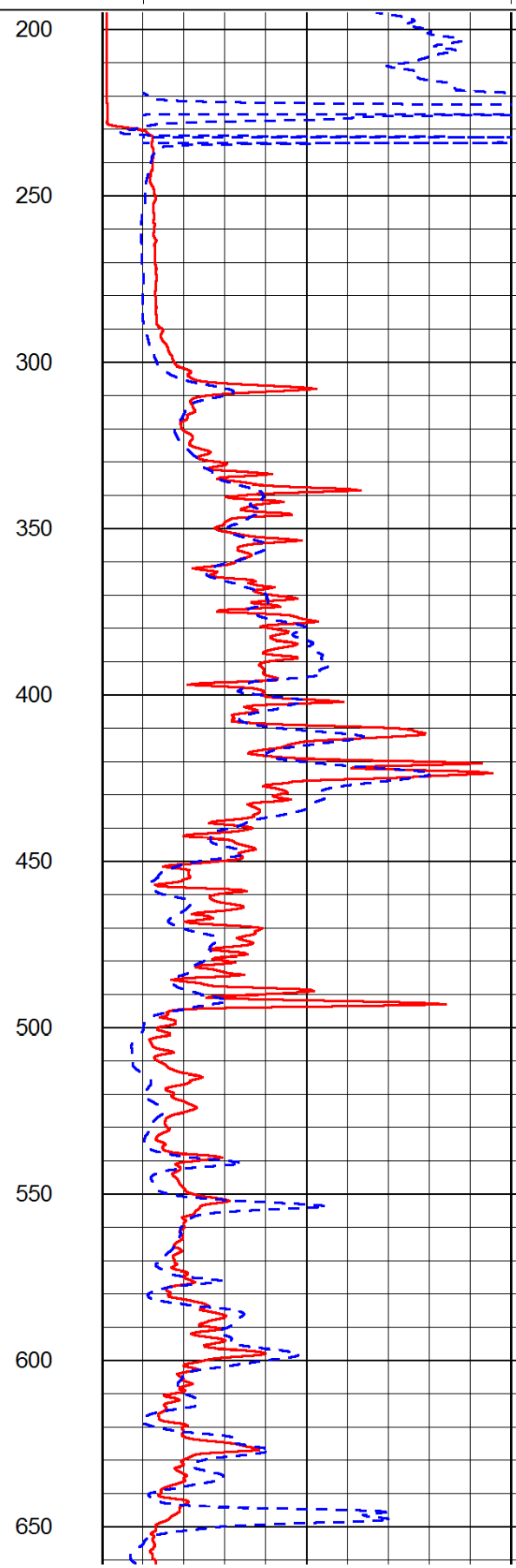
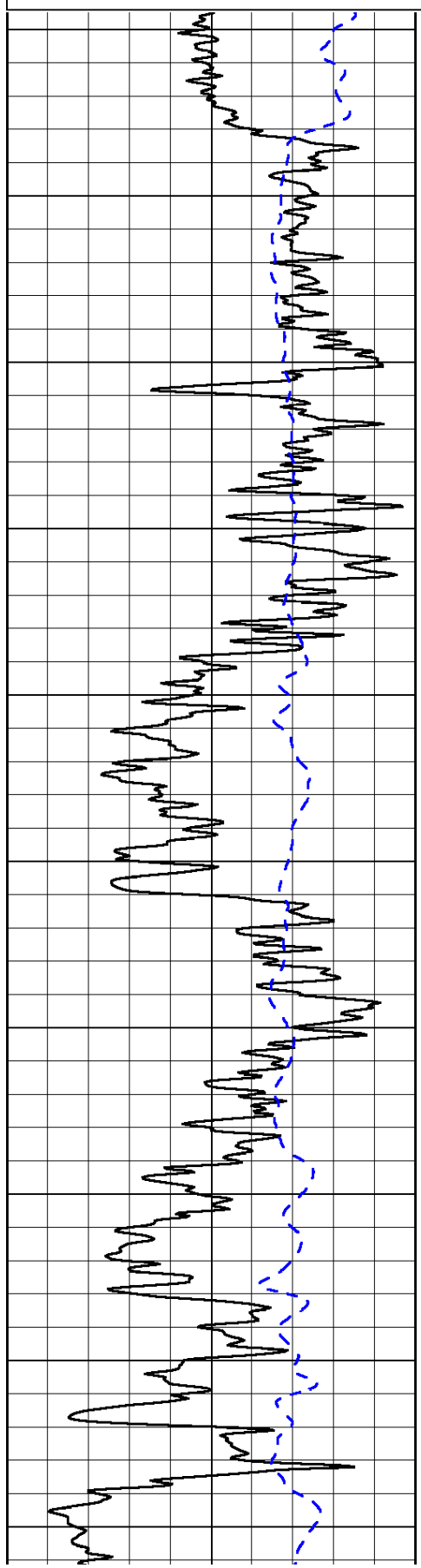
0	Gamma Ray	150
-200	SP (mV)	0

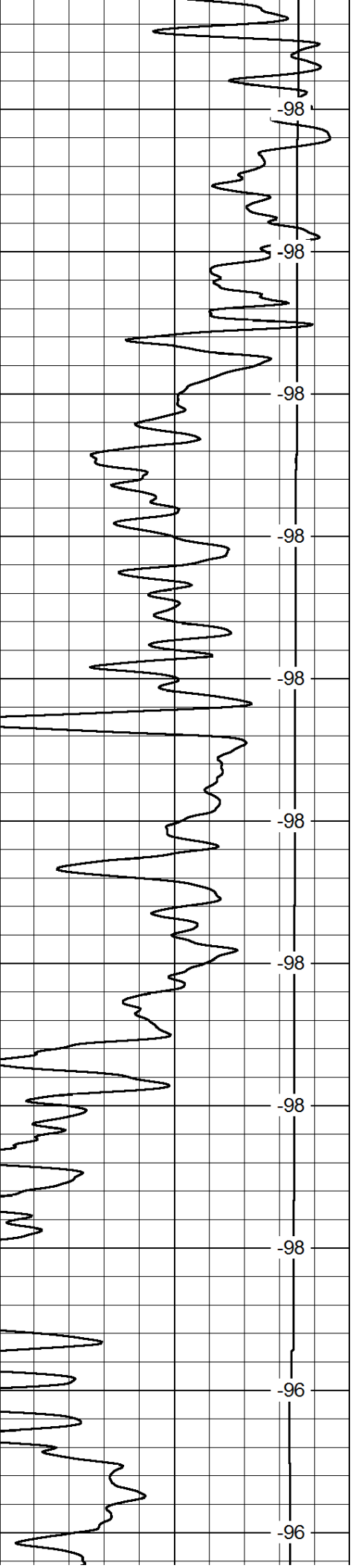
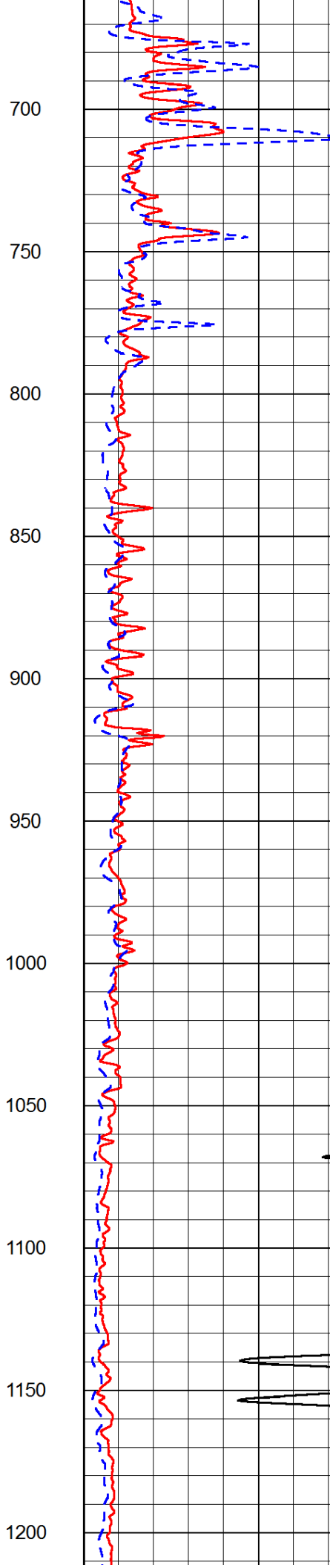
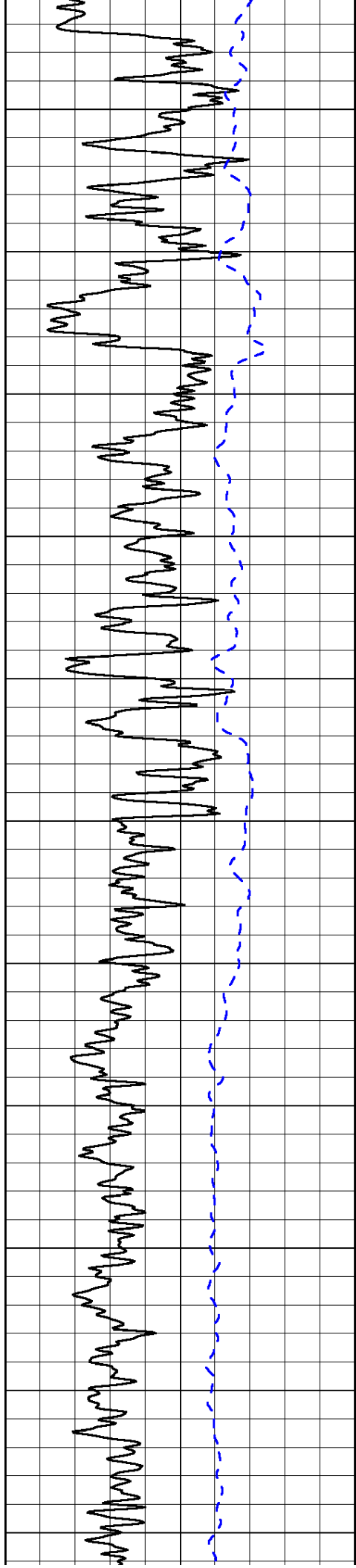
0	Shallow Resistivity	50
0	Deep Resistivity	50

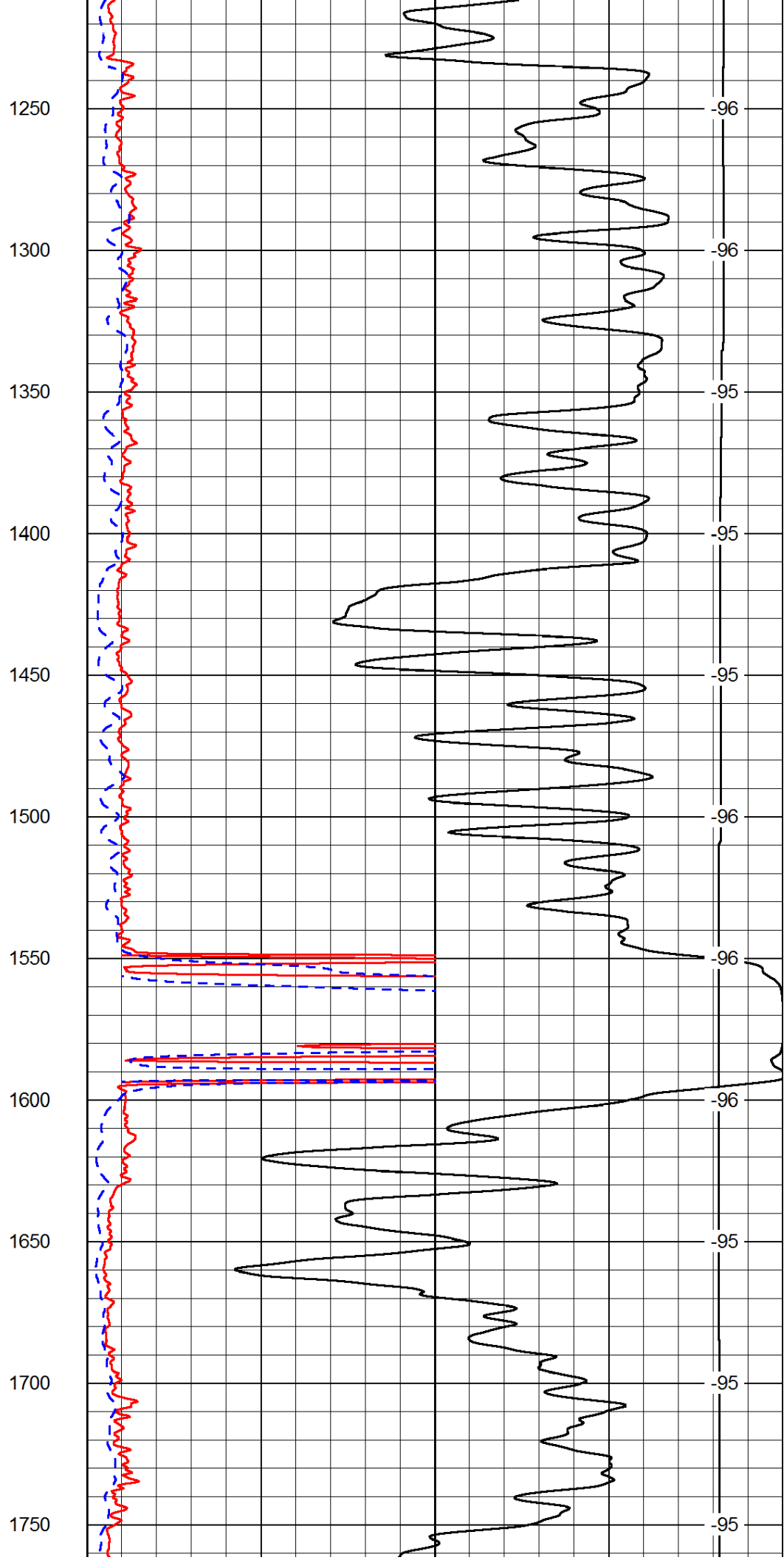
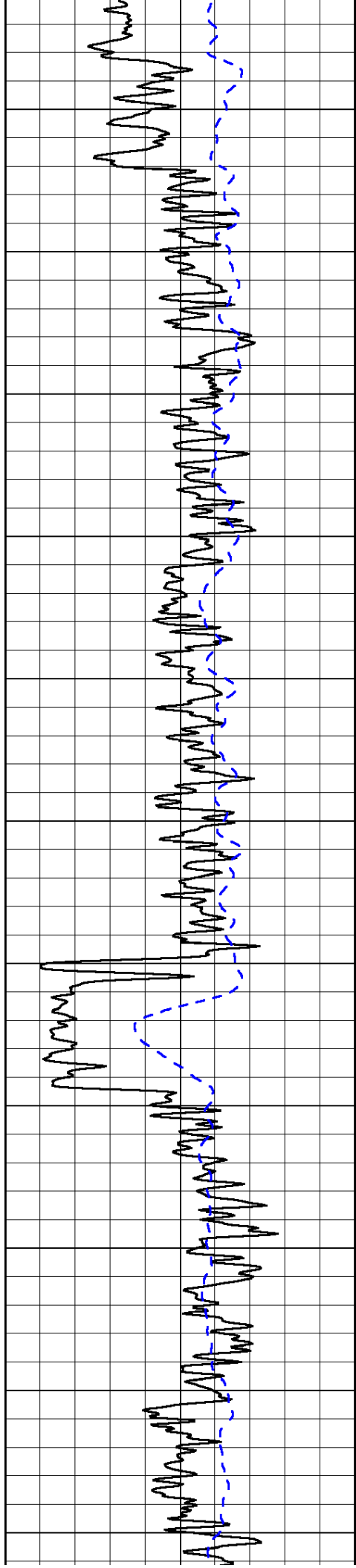
LSPD

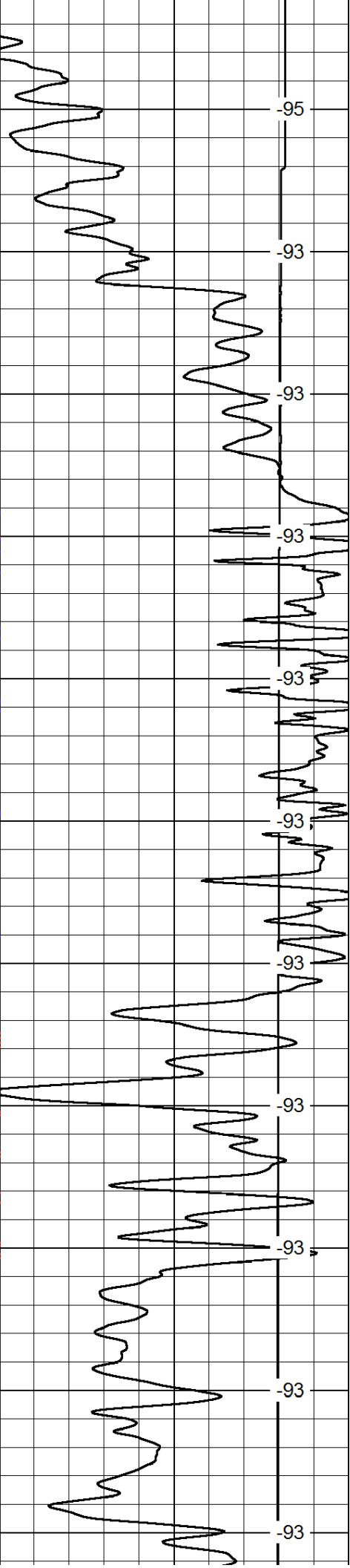
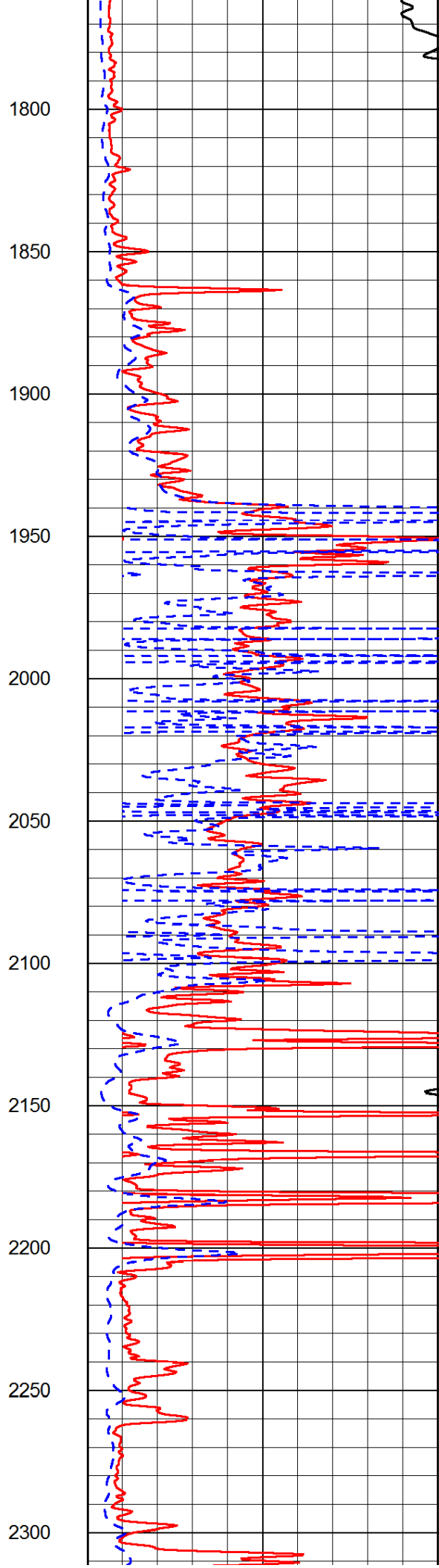
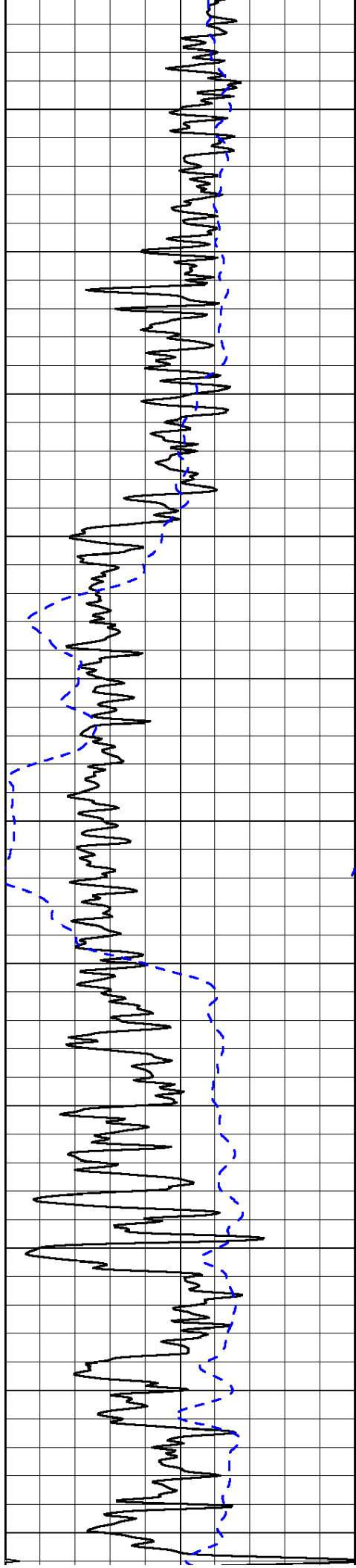
1000	Conductivity	0
15000	Line Tension	0

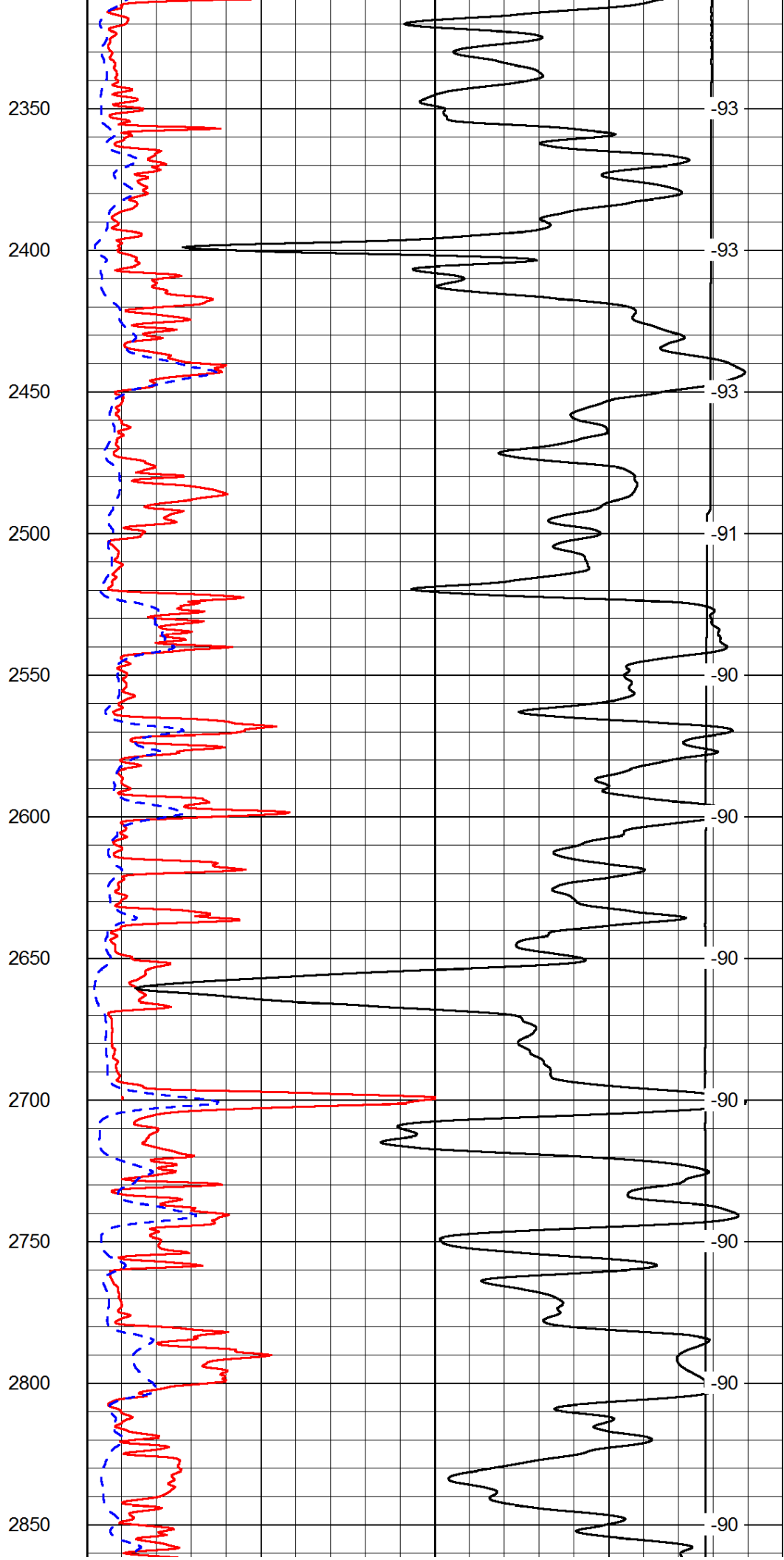
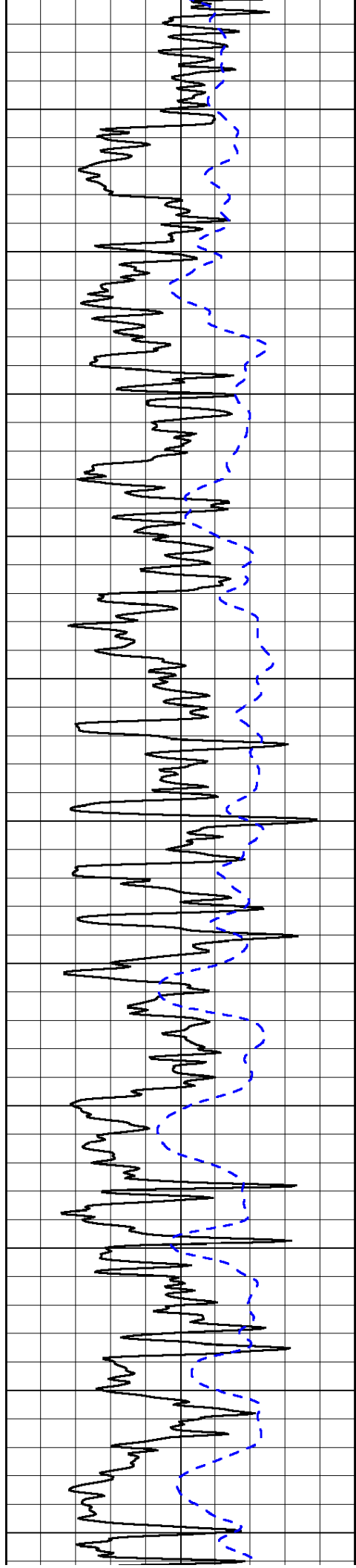
50	Shallow Resistivity	500
50	Deep Resistivity	500

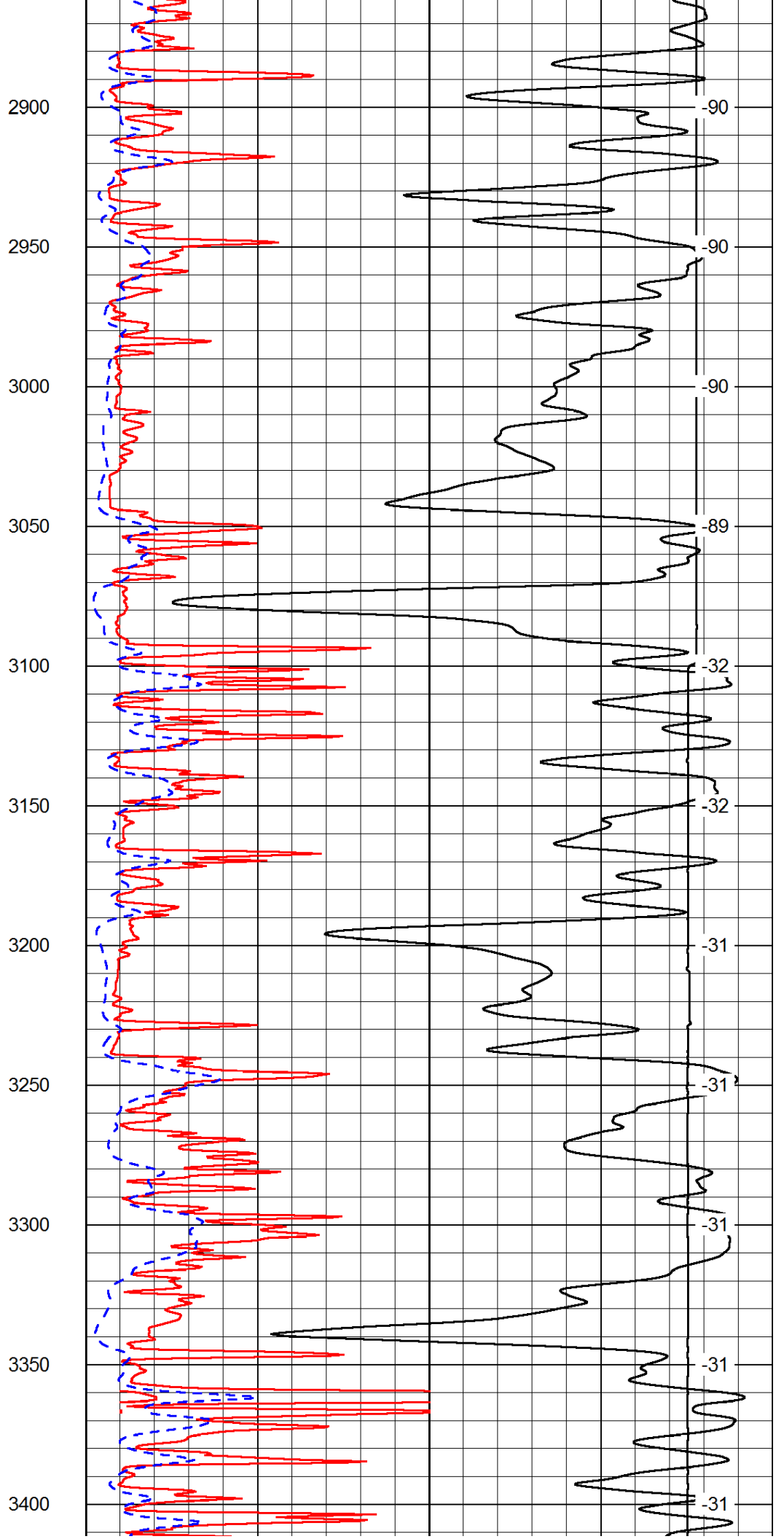
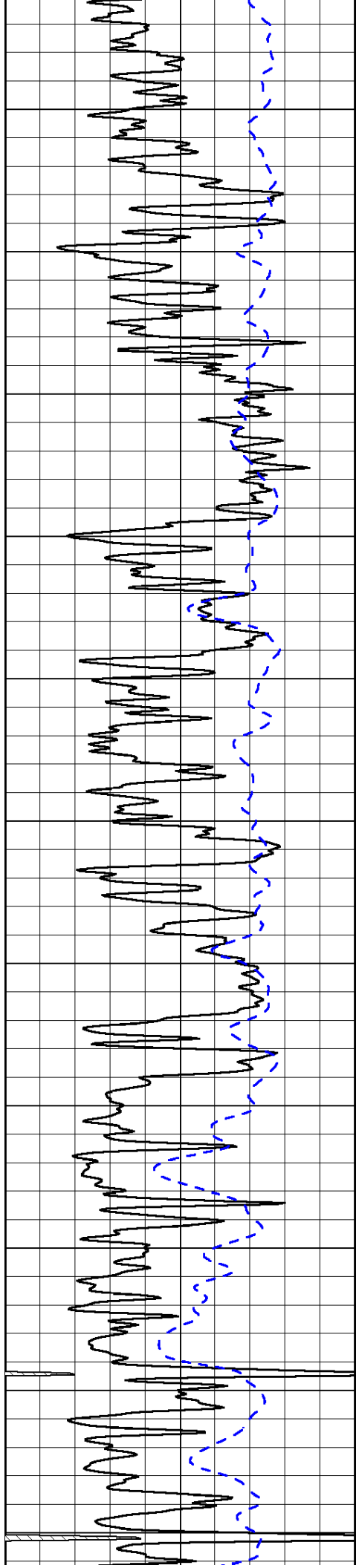


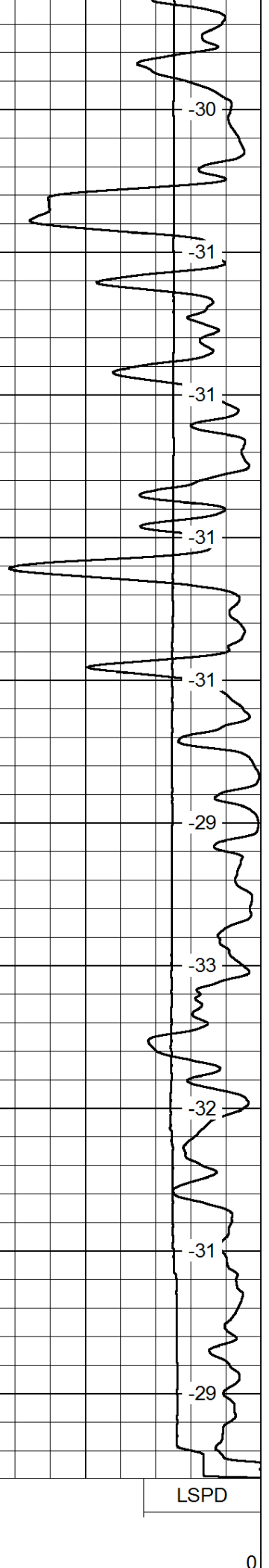
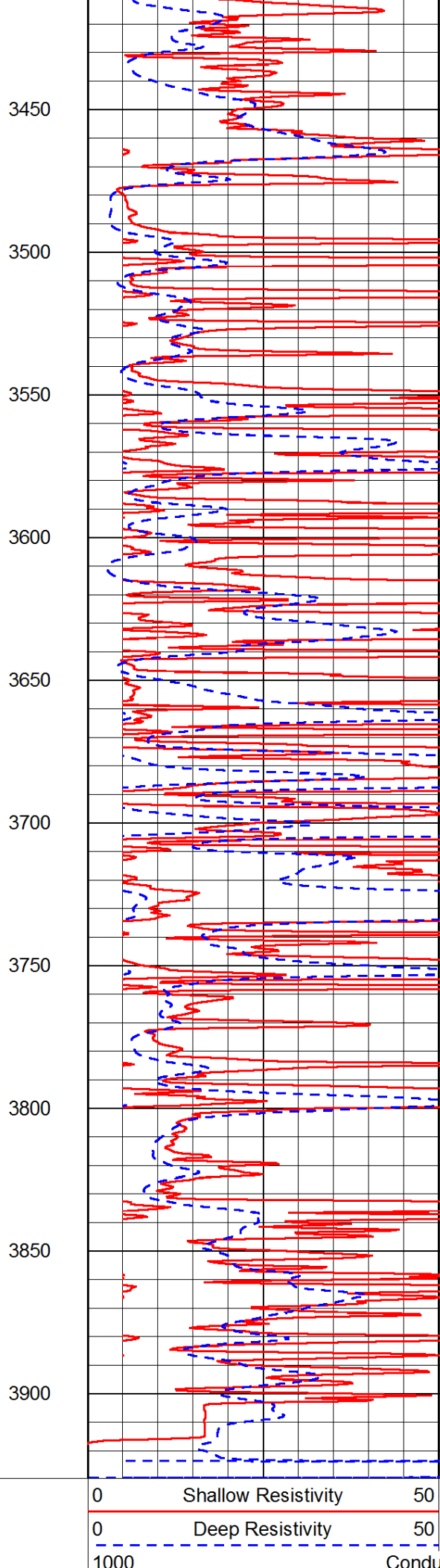
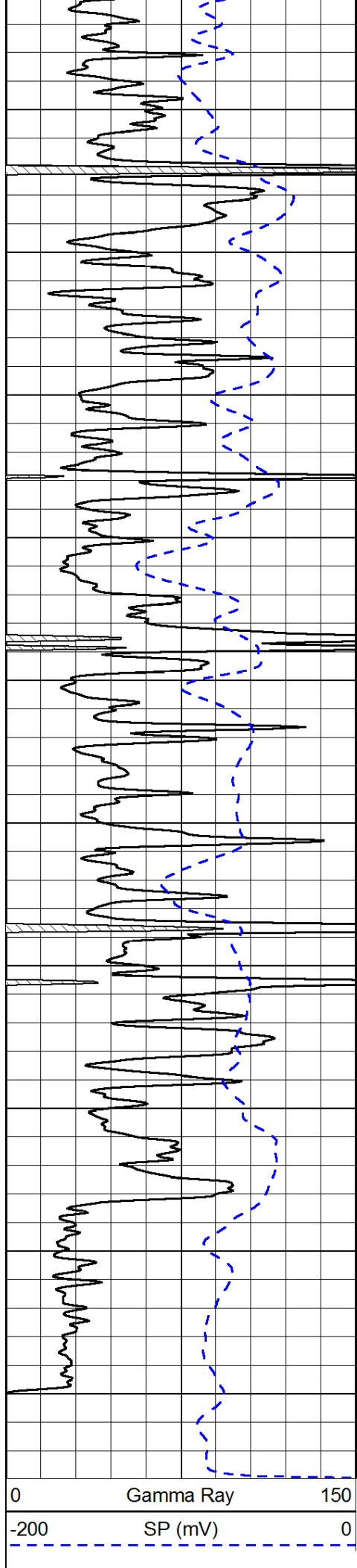












0 Gamma Ray 150
-200 SP (mV) 0

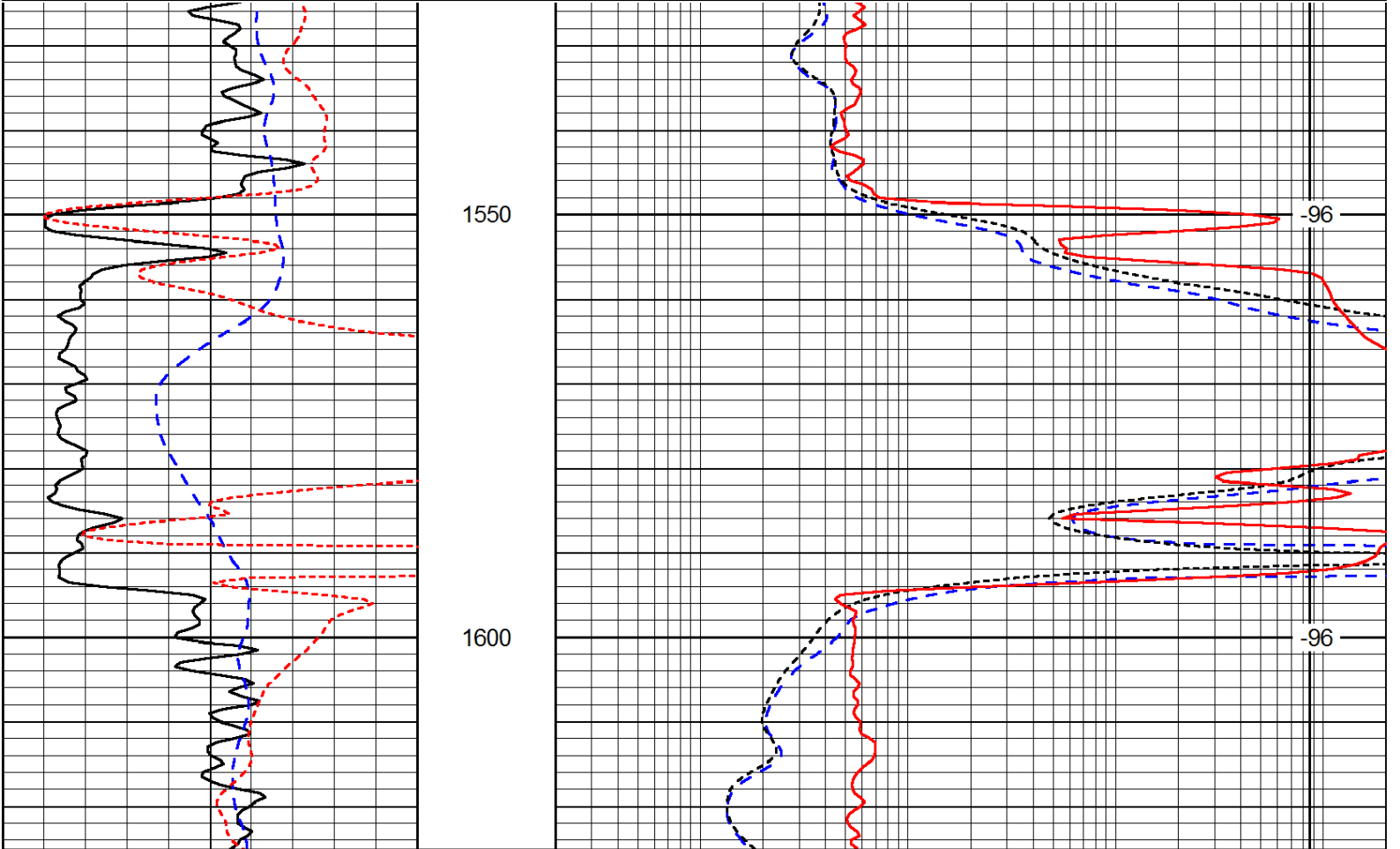
0 Shallow Resistivity 50
0 Deep Resistivity 50
1000 Conductivity 0

LSPD

15000	Line Tension		0
50	Shallow Resistivity	500	
50	Deep Resistivity	500	

Database File: c:\warrior\data\staab_vonfeldt staab #4\staab_vonfeldtstaab_4hd.db
 Dataset Pathname: DIL/staabstk
 Presentation Format: dil
 Dataset Creation: Wed Dec 11 01:53:16 2013
 Charted by: Depth in Feet scaled 1:240

0	Gamma Ray	150	0.2	Deep Resistivity	2000
-200	SP (mV)	0	0.2	Medium Resistivity	2000
-160	RxoRt	40	0.2	Shallow Resistivity	2000
			15000	Line Tension	0
					LSPD



0	Gamma Ray	150	0.2	Deep Resistivity	2000
-200	SP (mV)	0	0.2	Medium Resistivity	2000
-160	RxoRt	40	0.2	Shallow Resistivity	2000
			15000	Line Tension	0
					LSPD

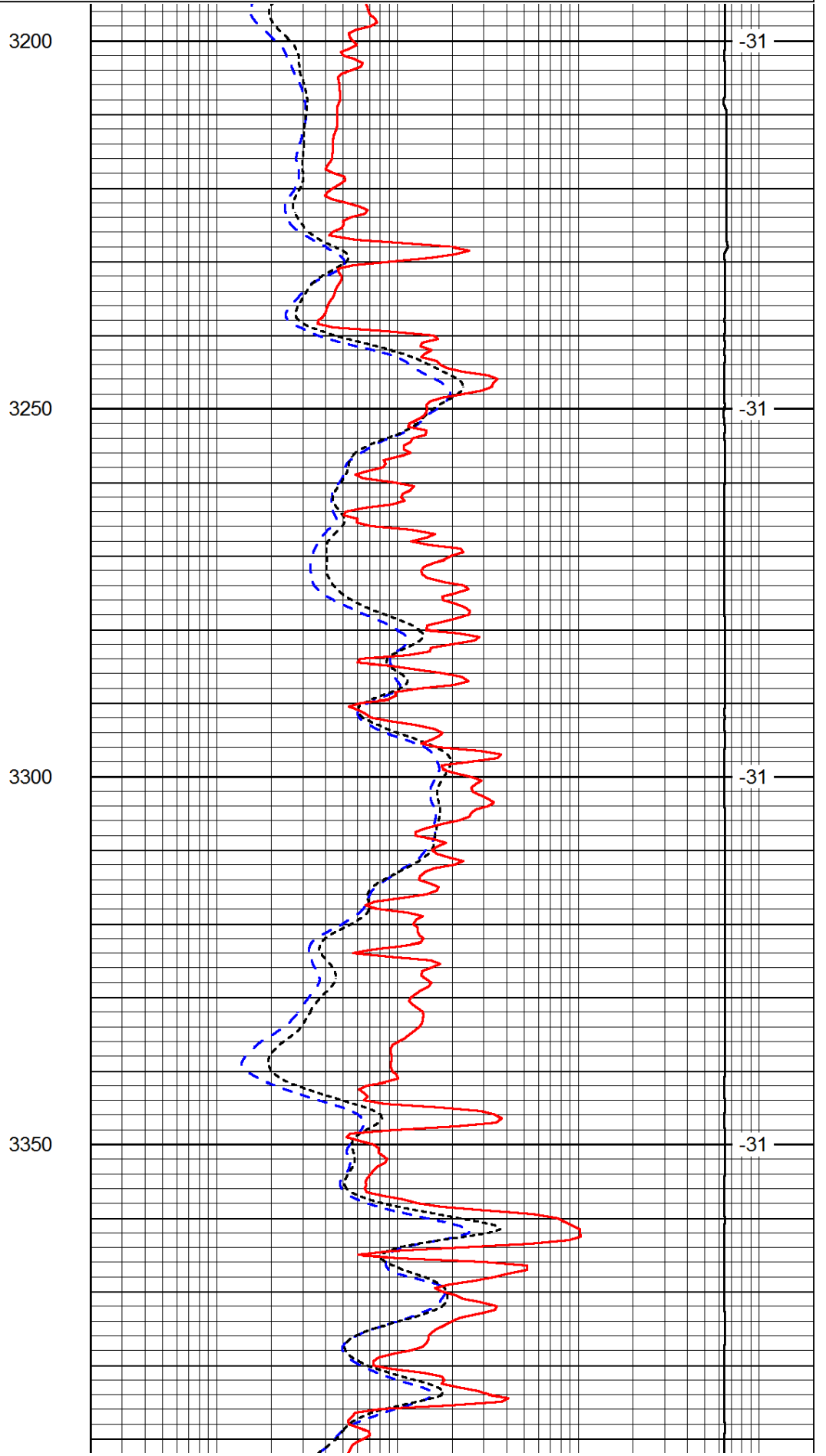
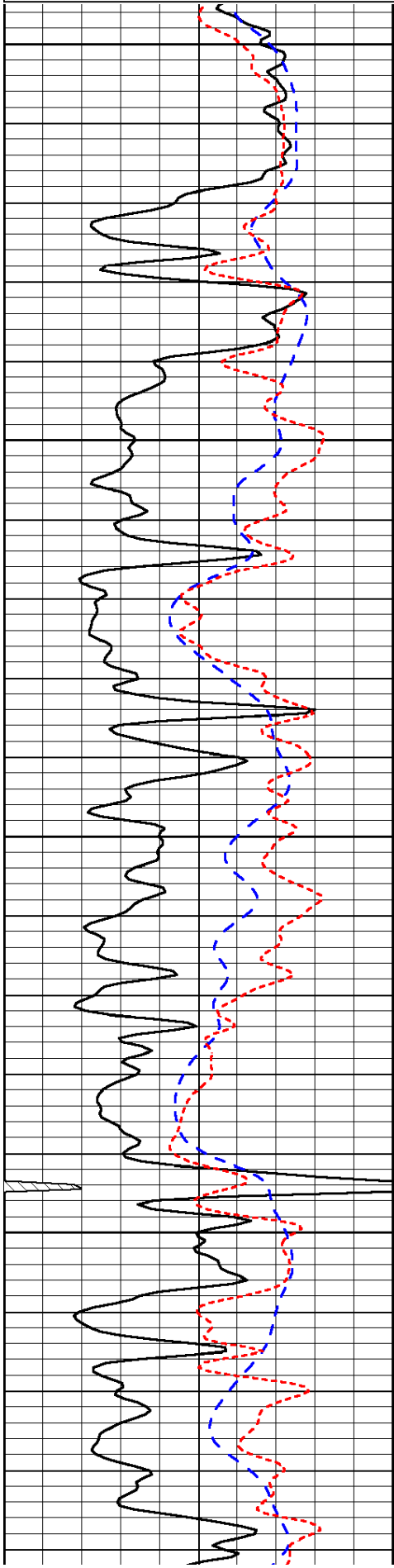
Database File: c:\warrior\data\staab_vonfeldt staab #4\staab_vonfeldtstaab_4hd.db
 Dataset Pathname: DIL/staabstk
 Presentation Format: dil
 Dataset Creation: Wed Dec 11 01:53:16 2013
 Charted by: Depth in Feet scaled 1:240

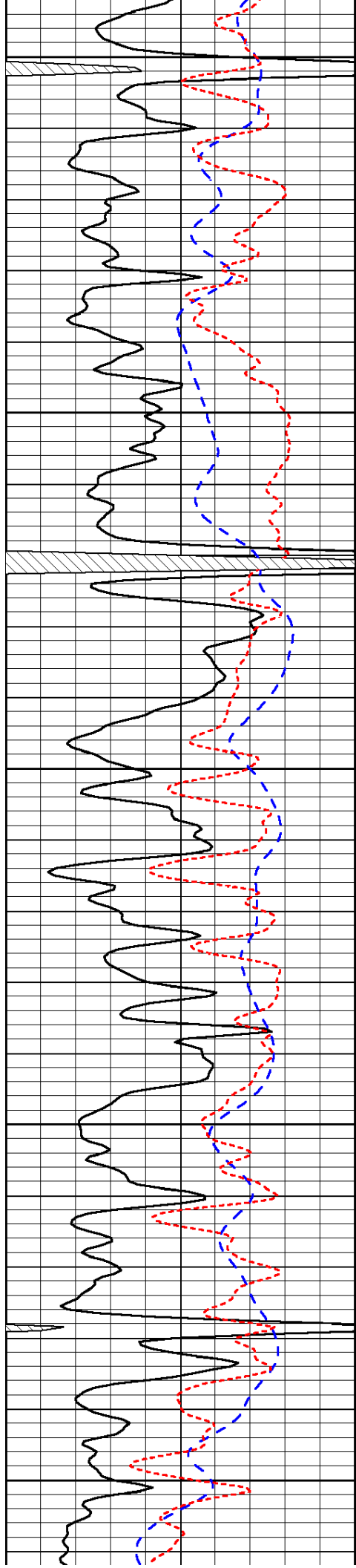
0	Gamma Ray	150	0.2	Deep Resistivity	2000
---	-----------	-----	-----	------------------	------

0	Gamma Ray	150
-200	SP (mV)	0
-160	RxoRt	40

0.2	Deep Resistivity	2000
0.2	Medium Resistivity	2000
0.2	Shallow Resistivity	2000
15000	Line Tension	0

LSPD





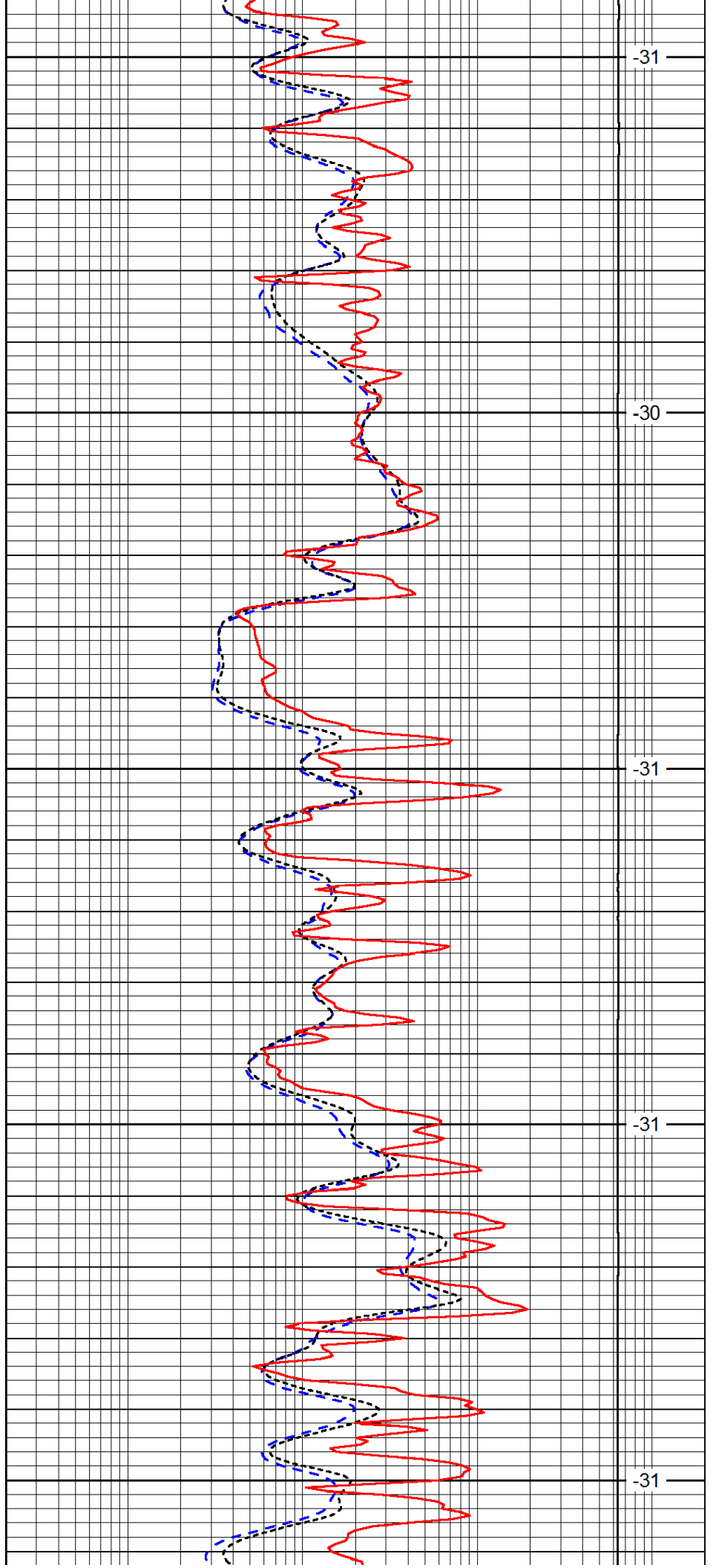
3400

3450

3500

3550

3600



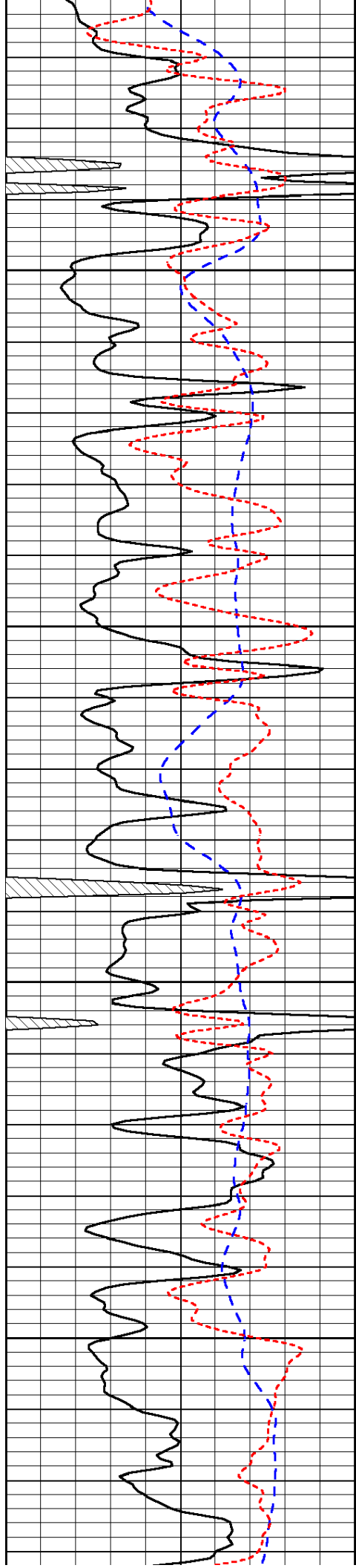
-31

-30

-31

-31

-31

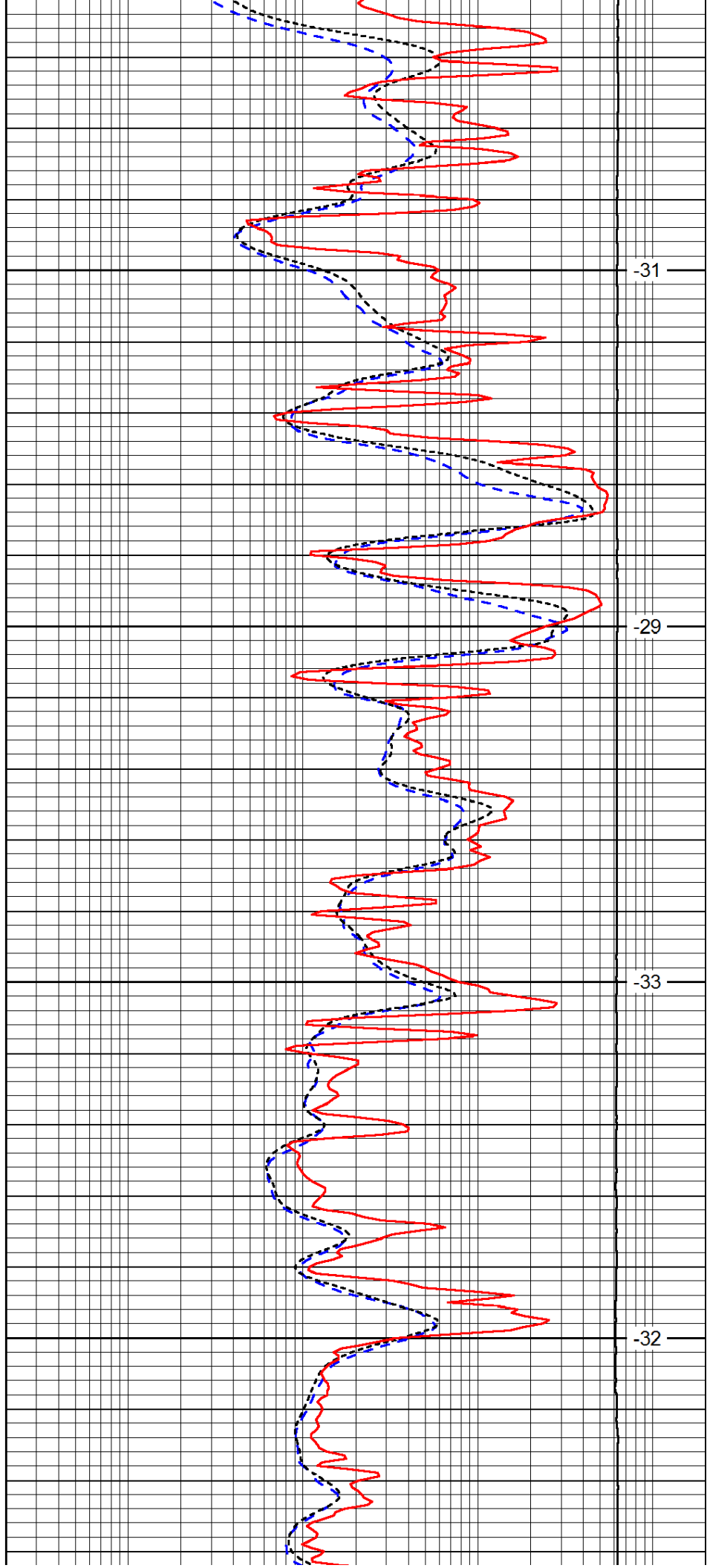


3650

3700

3750

3800

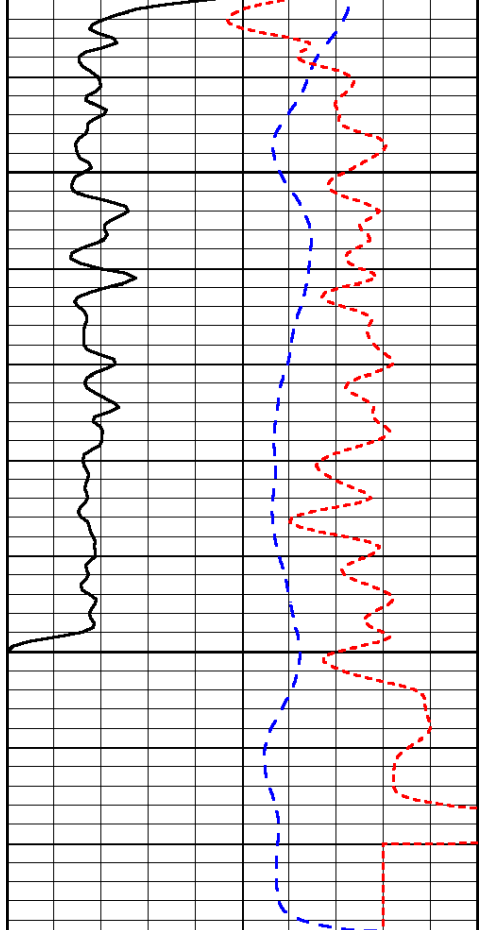


-31

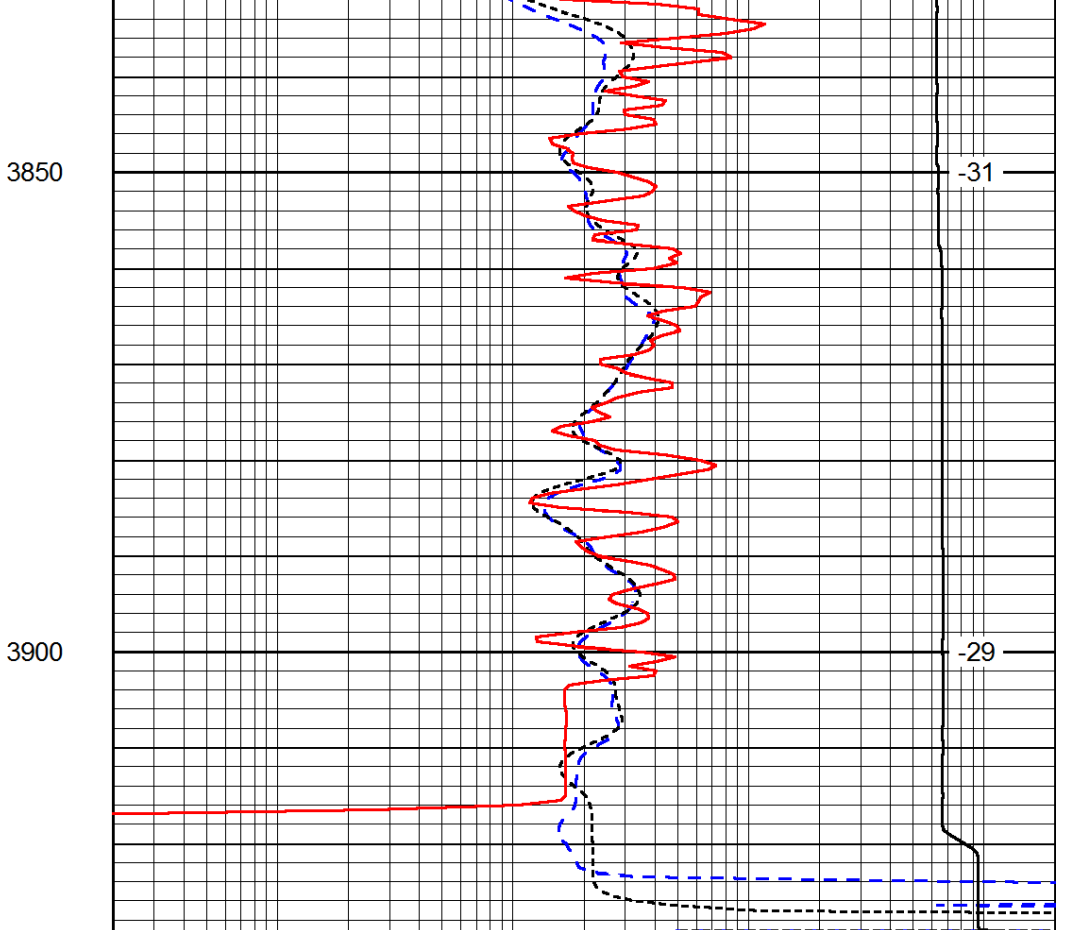
-29

-33

-32



0	Gamma Ray	150
-200	SP (mV)	0
-160	RxoRt	40



0.2	Deep Resistivity	2000
0.2	Medium Resistivity	2000
0.2	Shallow Resistivity	2000
15000	Line Tension	0

LSPD