



Pioneer Energy Services

Dual Compensated Porosity Log

15-051-26,644-00-00

API No. _____

Company **Staab Oil Company**

Well **Vonfeldt Staab #4**

Field **Crathorne Northwest**

County **Ellis** State **Kansas**

Location **NW NE SE NE
1640' FNL & 370' FEL**

Sec: **19** Twp: **12S** Rge: **19W**

Permanent Datum **Ground Level** Elevation **2196**

Log Measured From **Kelly Bushing** **5** Ft. Above Perm. Datum

Drilling Measured From **Kelly Bushing**

Other Services
DIL
MEL

Elevation
K.B. 2201
D.F.
G.L. 2196

Date	12/11/2013	
Run Number	One	
Type Log	CNL / CDL	
Depth Driller	3920	
Depth Logger	3919	
Bottom Logged Interval	3898	
Top Logged Interval	3200	
Type Fluid In Hole	Chemical	
Salinity, PPM CL	900	
Density	8.8	
Level	Full	
Max. Rec. Temp. F	115	
Operating Rig Time	3 1/2 Hours	
Equipment -- Location	15 Hays	
Recorded By	D Kerr	
Witnessed By	Bob Hopkins	Todd Staab

Borehole Record

Run No.	Bit	From	To	Size	Wgt.	From	To
1	12.25	00	229	8.625	24#	00	229
2	7.875	229	3920				

Casing Record

<<< Fold Here >>>

All interpretations are opinions based on inferences from electrical or other measurements and we cannot and do not guarantee the accuracy or correctness of any interpretation, and we shall not, except in the case of gross or willful negligence on our part, be liable or responsible for any loss, costs, damages, or expenses incurred or sustained by anyone resulting from any interpretation made by any of our officers, agents or employees. These interpretations are also subject to our general terms and conditions set out in our current Price Schedule.

Comments

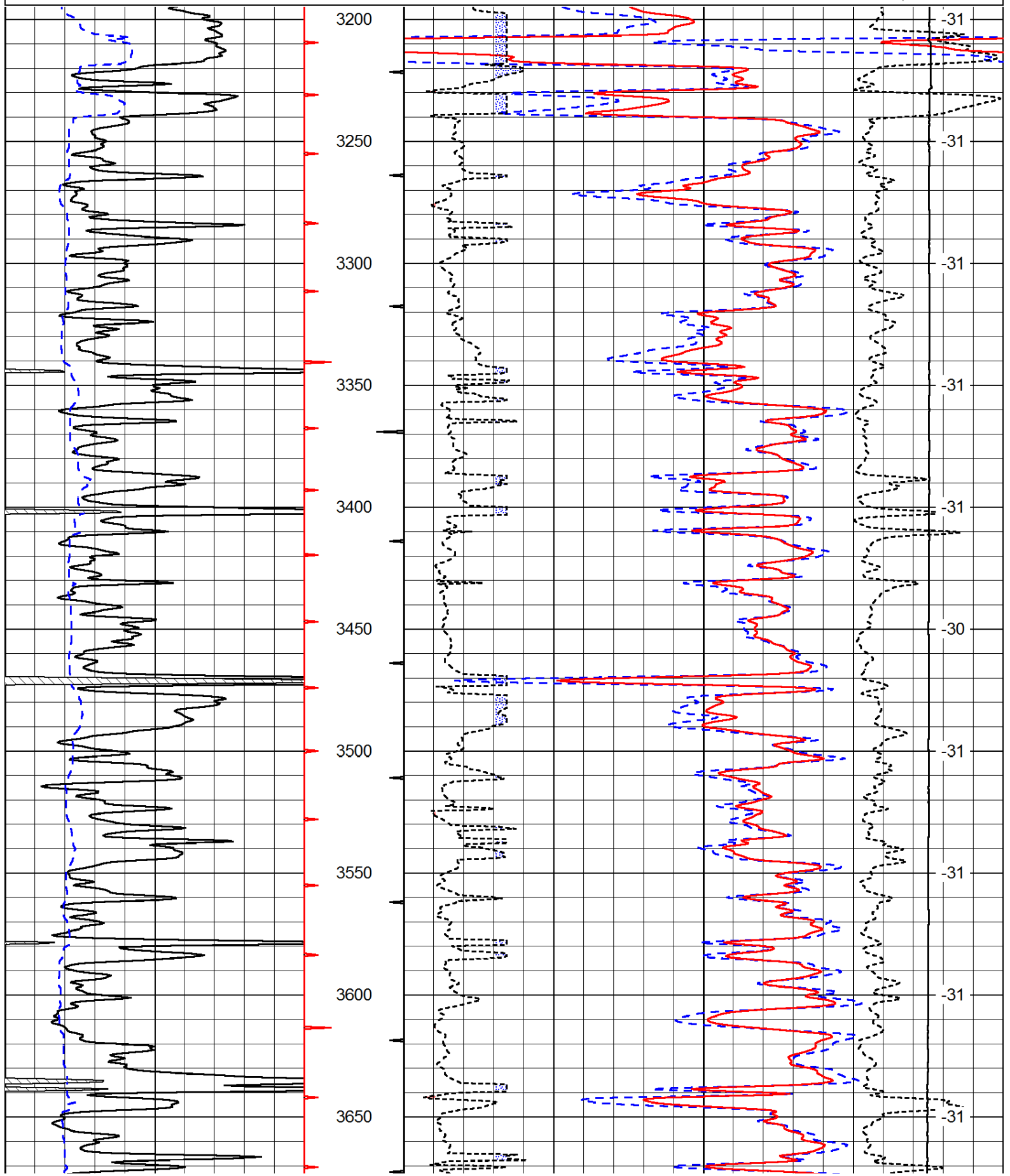
Thank you for using Pioneer Energy Services
www.pioneerres.com
 785 625 3858

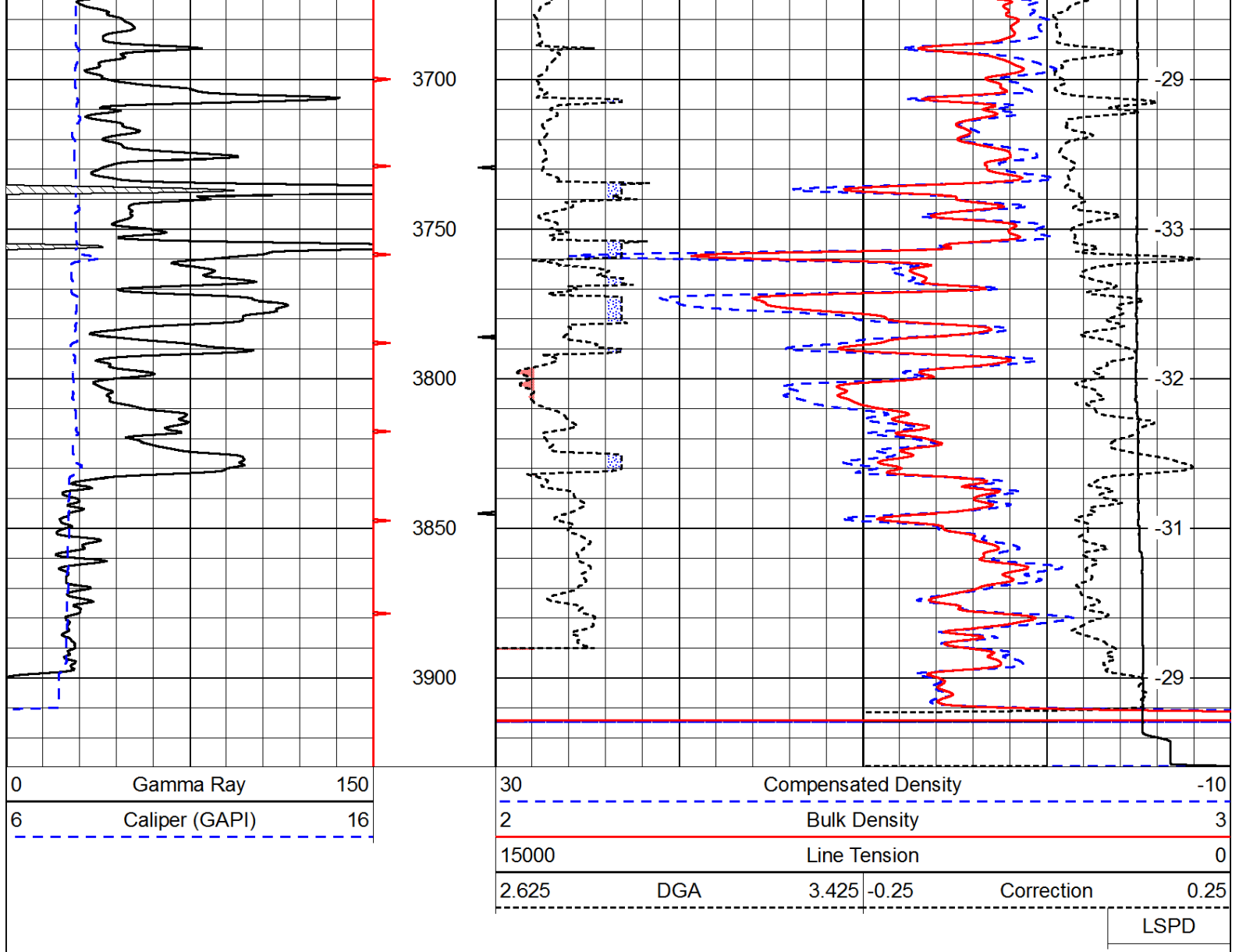
Yocemento Exit on I 70, North to Buckeye RD,
 2 West, 1/2 South, West Into

Database File: c:\warrior\data\staab_vonfeldt staab #4\staab_vonfeldtstaab_4hd.db
 Dataset Pathname: DIL/staabstk
 Presentation Format: cdl
 Dataset Creation: Wed Dec 11 01:53:16 2013
 Charted by: Depth in Feet scaled 1:600

0	Gamma Ray	150
6	Caliper (GAPI)	16

30	Compensated Density		-10
2	Bulk Density		3
15000	Line Tension		0
2.625	DGA	3.425	-0.25
		Correction	0.25
			LSPD





Database File: c:\warrior\data\staab_vonfeldt staab #4\staab_vonfeldtstaab_4hd.db
 Dataset Pathname: DIL/staabstk
 Presentation Format: cndlspec
 Dataset Creation: Wed Dec 11 01:53:16 2013
 Charted by: Depth in Feet scaled 1:240

