



Pioneer Energy Services

Dual Induction Log

| | | | |
|----------|-------------------------------|-----------|---------------------------|
| API No. | 15-007-24099-00-00 | | |
| Company | N-10 Exploration, LLC | | |
| Well | Medicine River Ranch "B" # 13 | | |
| Field | Landis | | |
| County | Barber | State | Kansas |
| Location | 1650' FSL & 330' FWL | | |
| Sec: 15 | Twp: 34 S | Rge: 11 W | Other Services CNL/CDL |

| | | | |
|------------------------|---------------|--------------------------|-----------|
| Permanent Datum | Ground Level | Elevation 1331 | K.B. 1341 |
| Log Measured From | Kelly Bushing | 10 Ft. Above Perm. Datum | D.F. 1331 |
| Drilling Measured From | Kelly Bushing | | G.L. 1331 |
| Date | 11-04-2013 | | |
| Run Number | One | | |
| Depth Driller | 5048 | | |
| Depth Logger | 5048 | | |
| Bottom Logged Interval | 5047 | | |
| Top Log Interval | 250 | | |
| Casing Driller | 8.625 @ 265 | | |
| Casing Logger | 265 | | |
| Bit Size | 7.875 | | |
| Type Fluid in Hole | Chemical | | |
| Salinity, ppm CL | 3000 | | |
| Density / Viscosity | 9.3 | 51 | |
| pH / Fluid Loss | 10.0 | 9.2 | |
| Source of Sample | Flowline | | |
| Rm @ Meas. Temp | 1.55 @ 56 | | |
| Rmf @ Meas. Temp | 1.16 @ 56 | | |
| Rmc @ Meas. Temp | 2.09 @ 56 | | |
| Source of Rmf / Rmc | Charts | | |
| Rm @ BHT | 0.68 @ 128 | | |
| Operating Rig Time | 3 1/2 Hours | | |
| Max Rec. Temp. F | 128 | | |
| Equipment Number | 91 | | |
| Location | Hays | | |
| Recorded By | Y. Ruiz | | |
| Witnessed By | Tim Pierce | | |

<<< Fold Here >>>

All interpretations are opinions based on inferences from electrical or other measurements and we cannot and do not guarantee the accuracy or correctness of any interpretation, and we shall not, except in the case of gross or willful negligence on our part, be liable or responsible for any loss, costs, damages, or expenses incurred or sustained by anyone resulting from any interpretation made by any of our officers, agents or employees. These interpretations are also subject to our general terms and conditions set out in our current Price Schedule.

Comments

Thank you for using Log-Tech, Inc.
 (785) 625-3858
 Medicine Lodge,
 South to Scott Canyon Rd, 3 East, 1/2 South, East past the river,
 South into

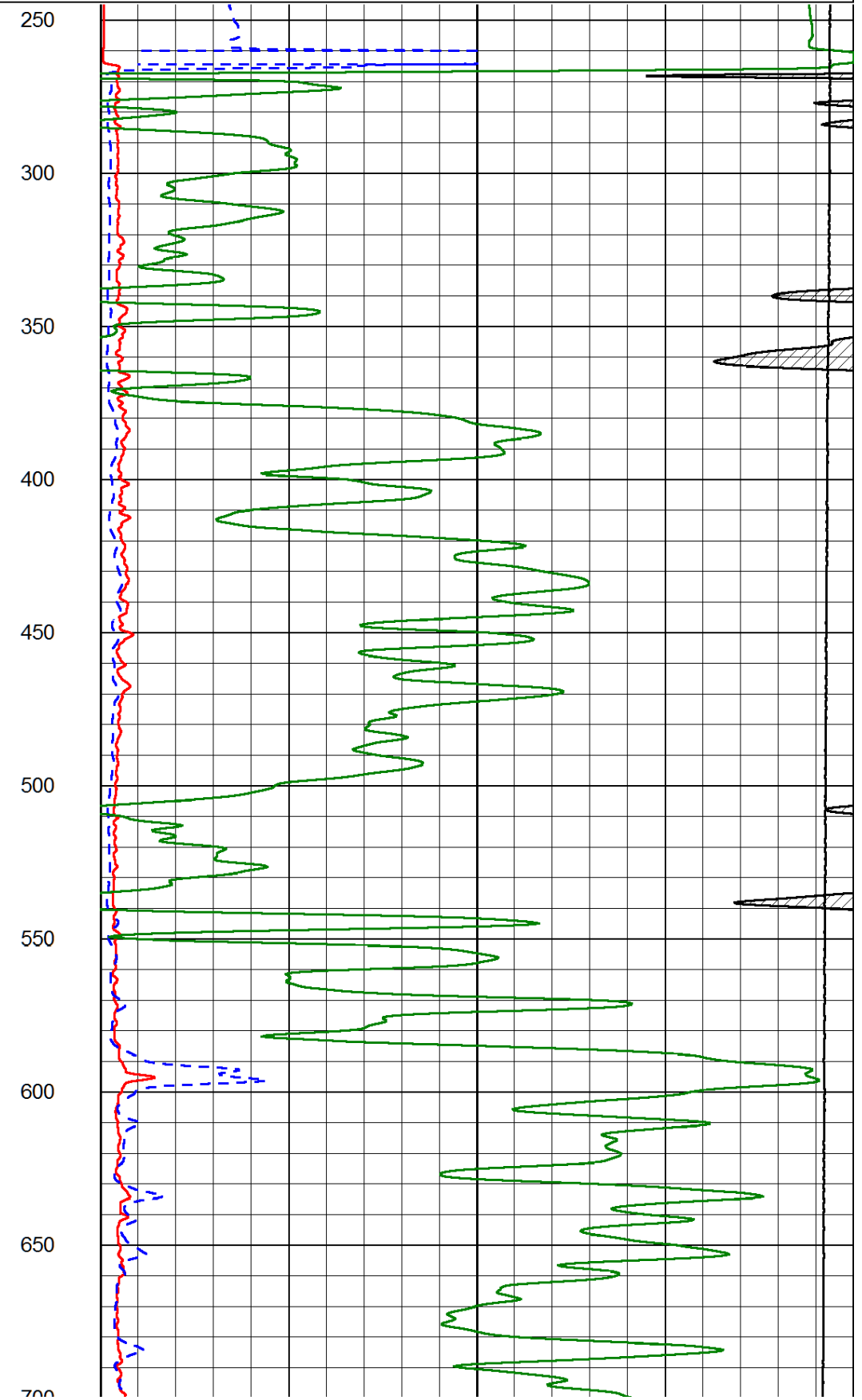
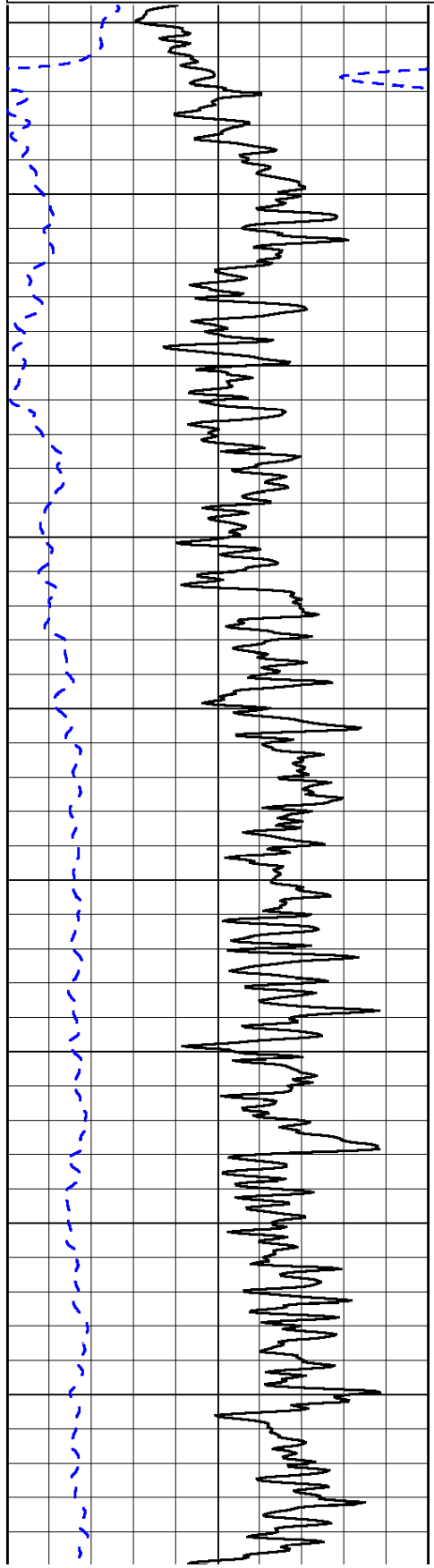
Database File: n-10110413hd.db
 Dataset Pathname: dil/n10stack
 Presentation Format: dil2in
 Dataset Creation: Mon Nov 04 12:36:42 2013
 Charted by: Depth in Feet scaled 1:600

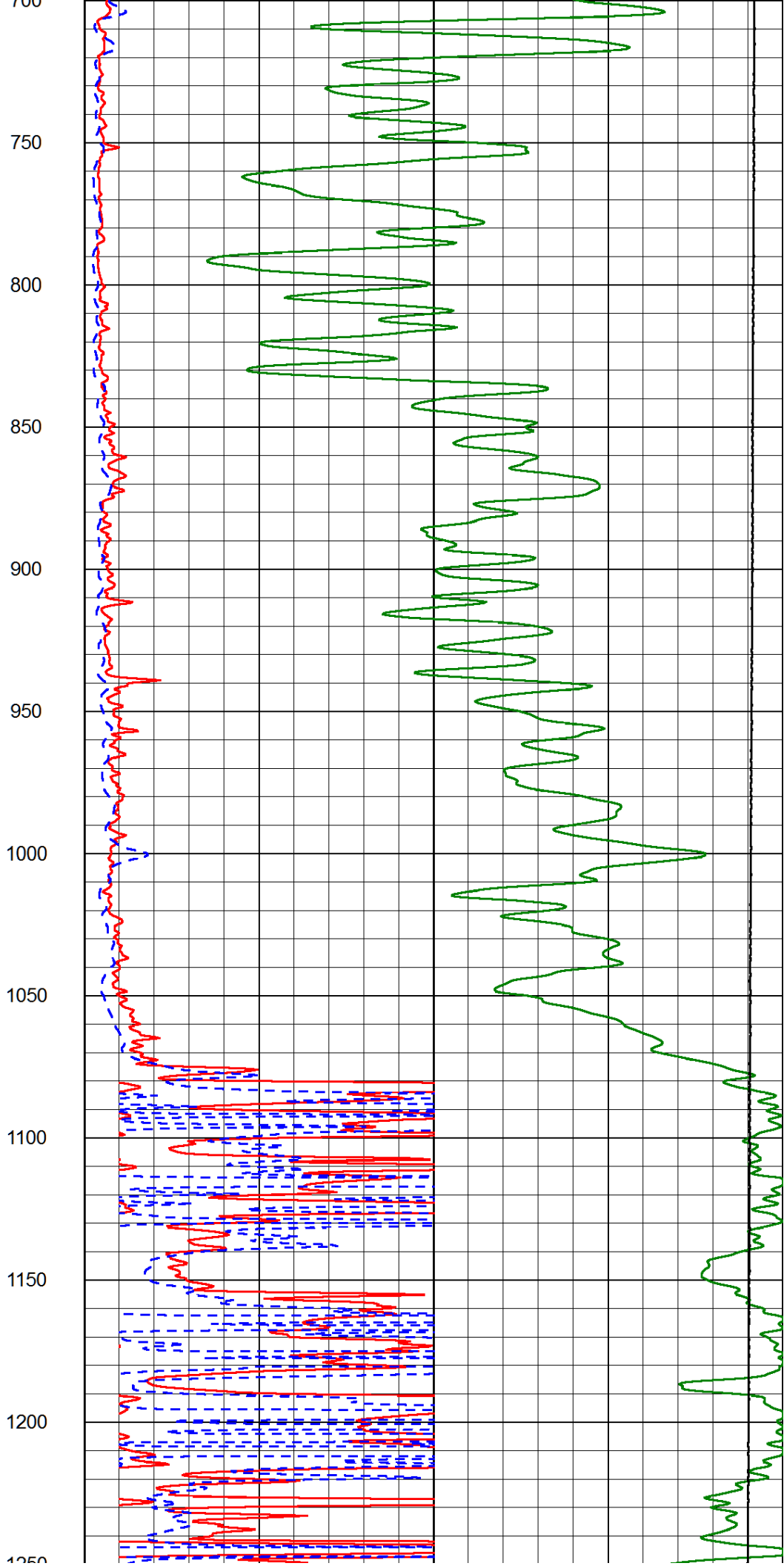
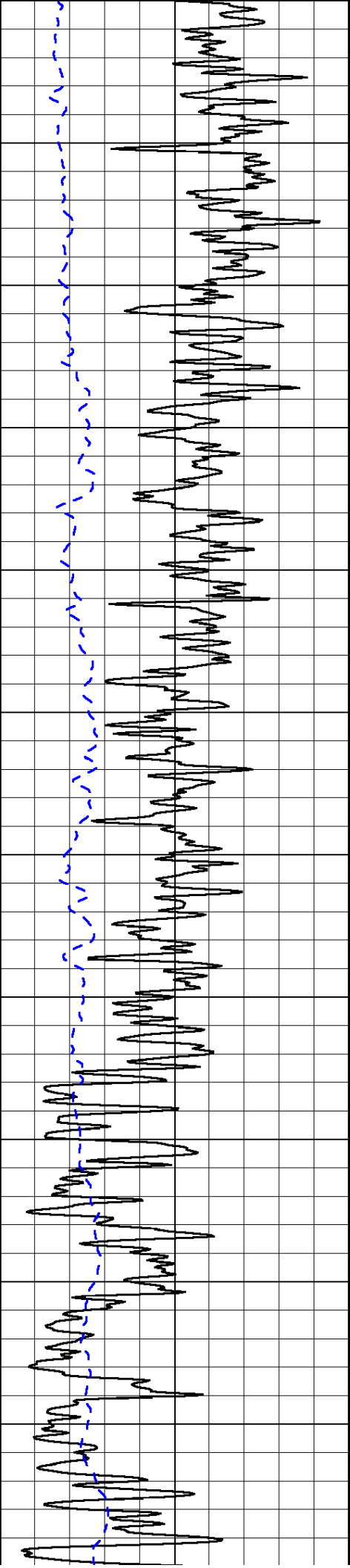
| | | |
|------|------------------|-----|
| 0 | Gamma Ray (GAPI) | 150 |
| -200 | SP (mV) | 0 |

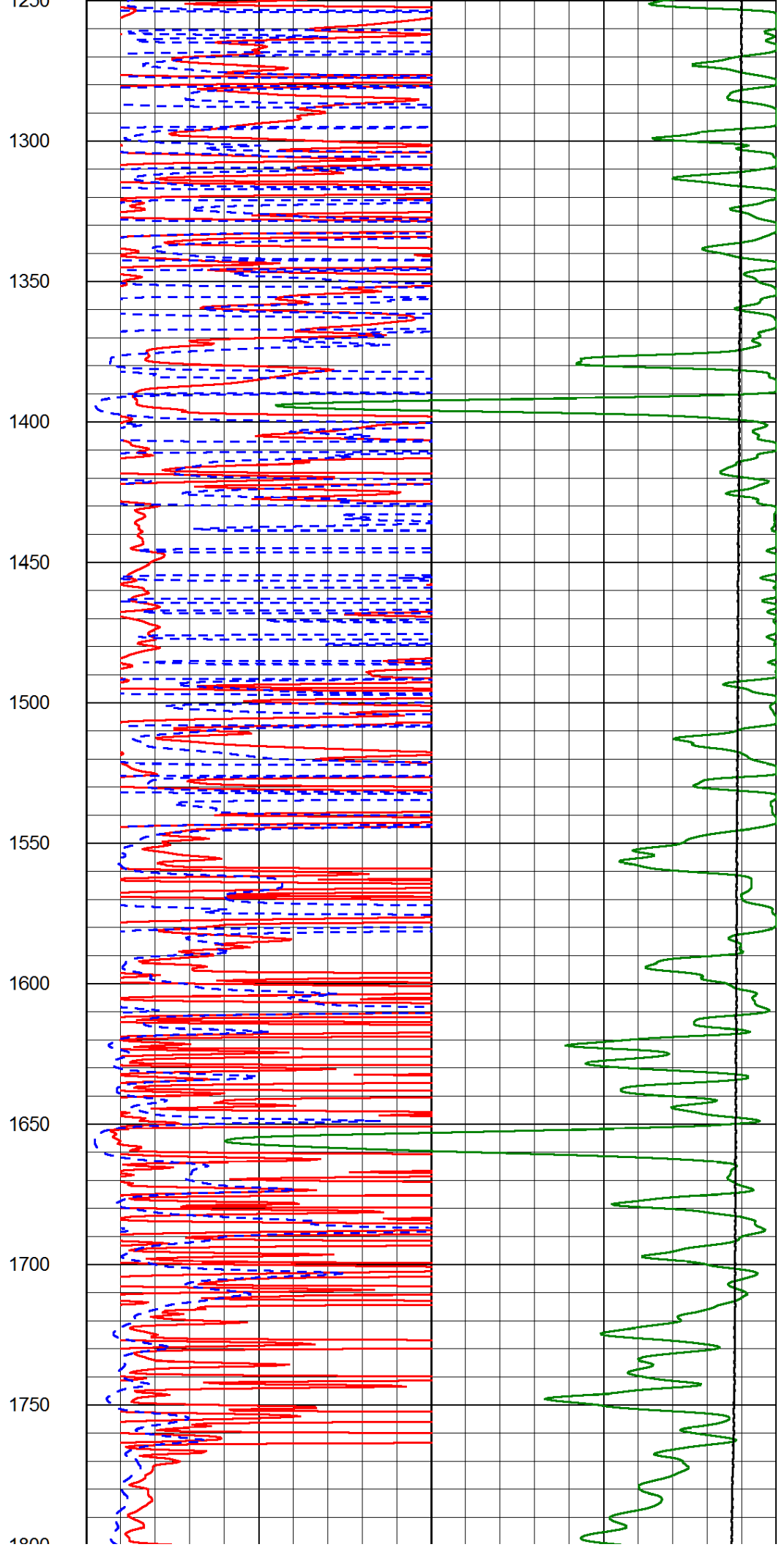
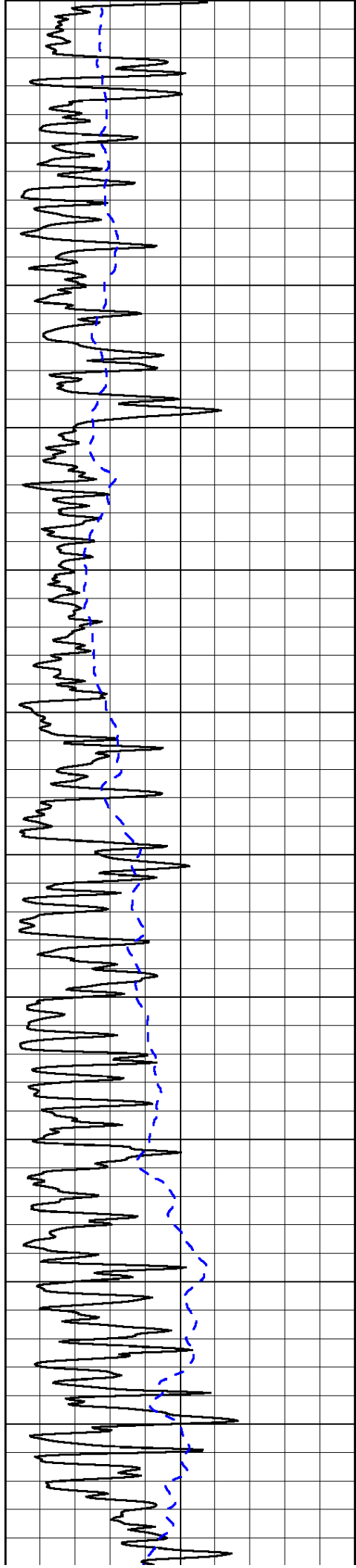
| | | |
|---|-----------------------------|----|
| 0 | Shallow Resistivity (Ohm-m) | 50 |
| 0 | Deep Resistivity (Ohm-m) | 50 |

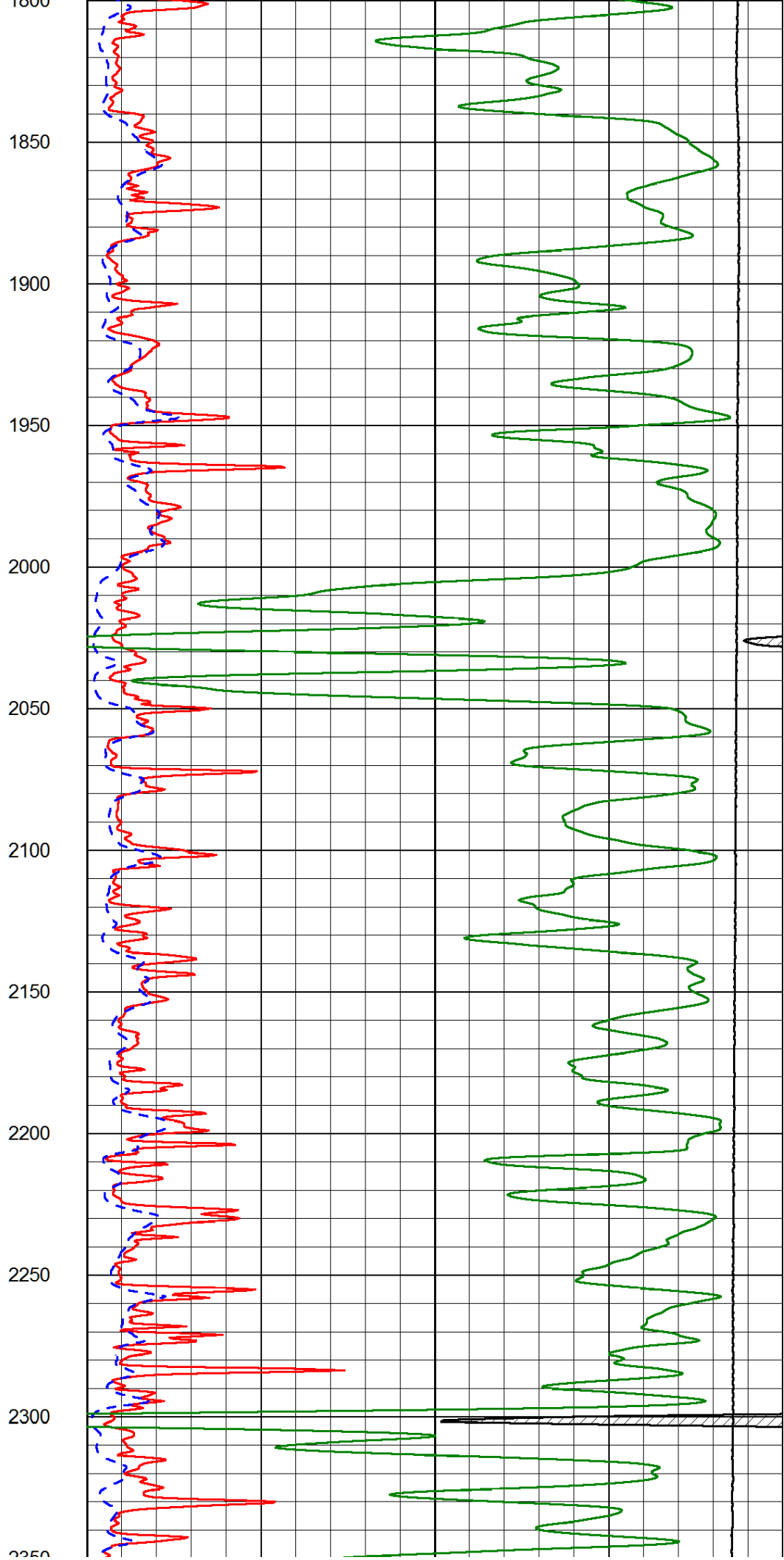
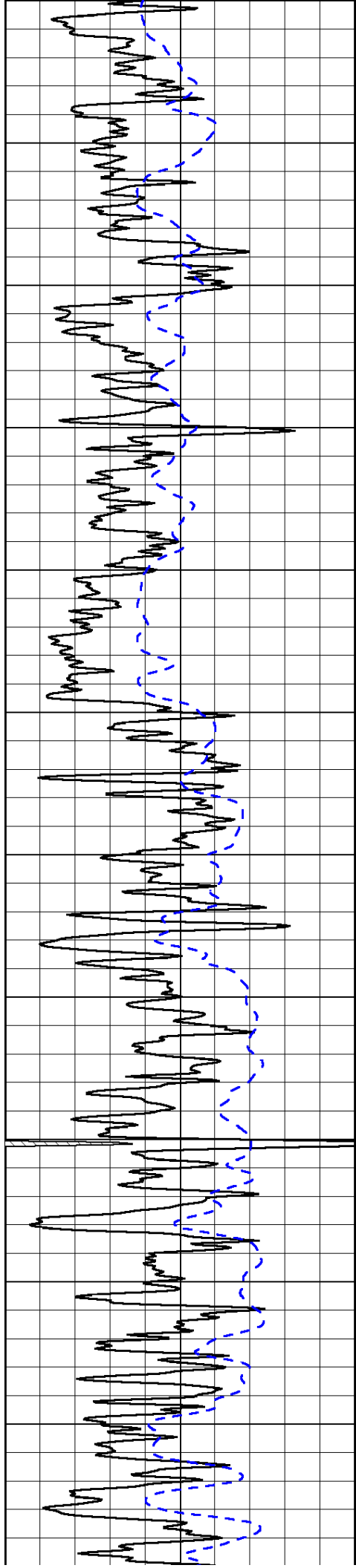
| | | |
|-------|----------------------|---|
| 1000 | Conductivity (Ohm-m) | 0 |
| 15000 | Line Tension (lb) | 0 |

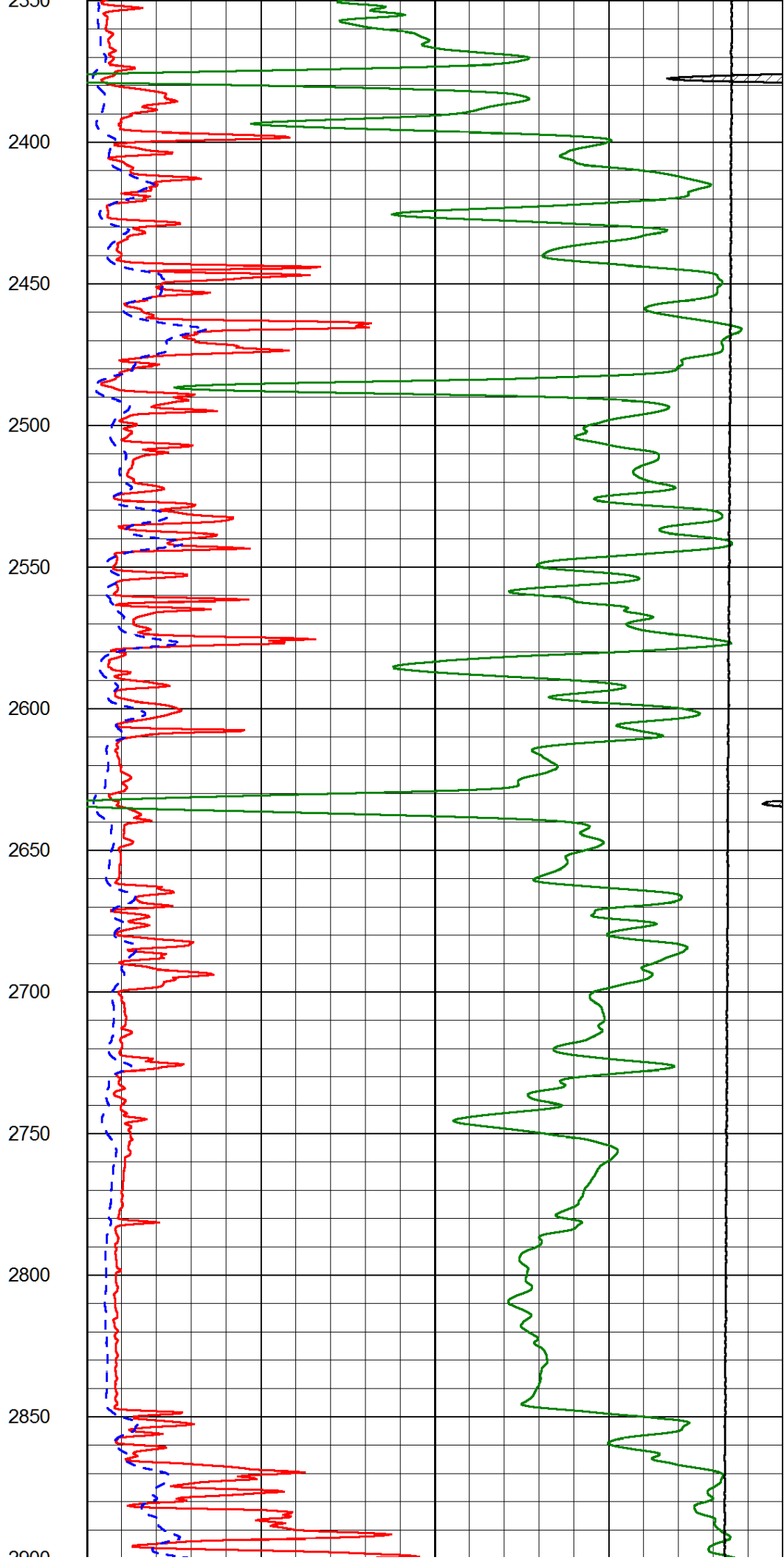
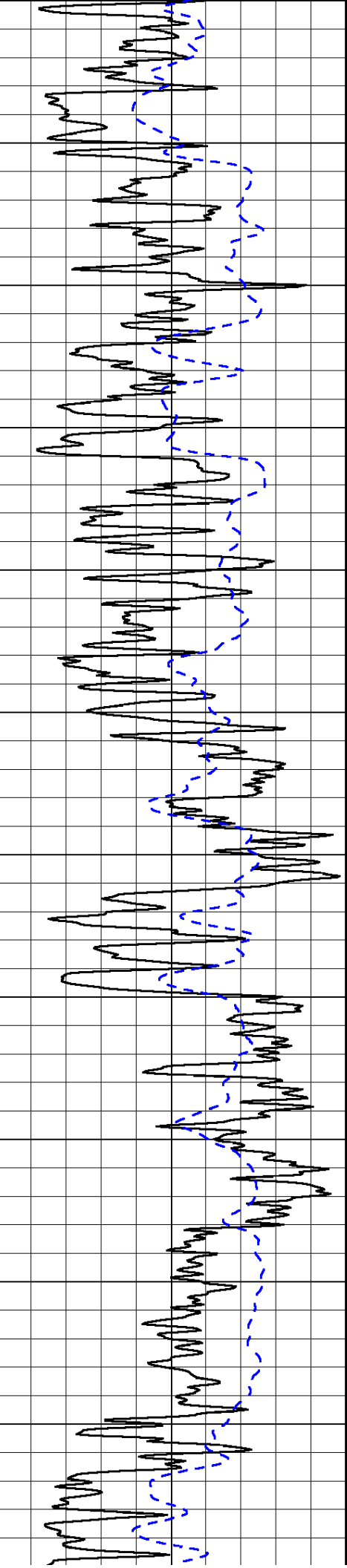
| | | |
|---------------------|--------------------------|-----|
| Shallow Resistivity | | |
| 50 | (Ohm-m) | 500 |
| 50 | Deep Resistivity (Ohm-m) | 500 |

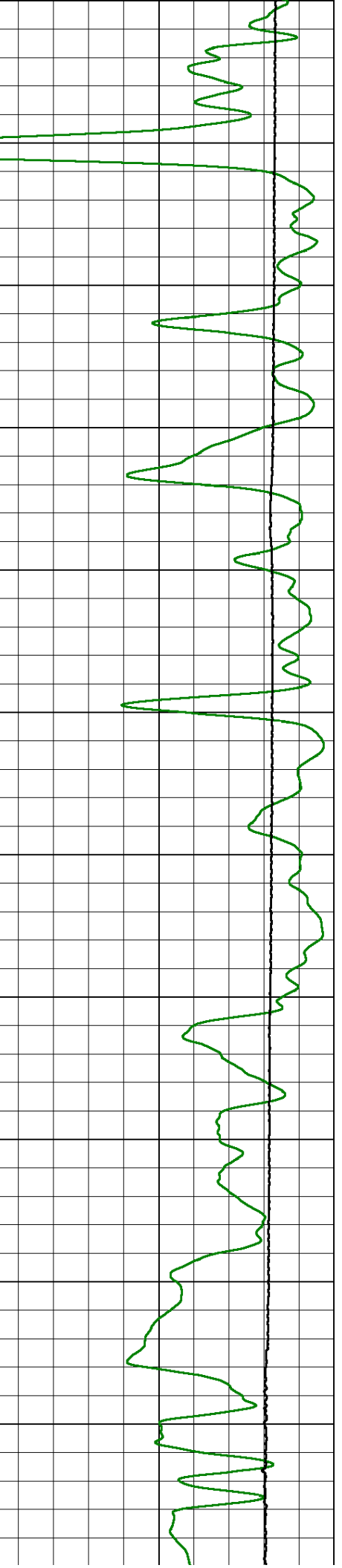
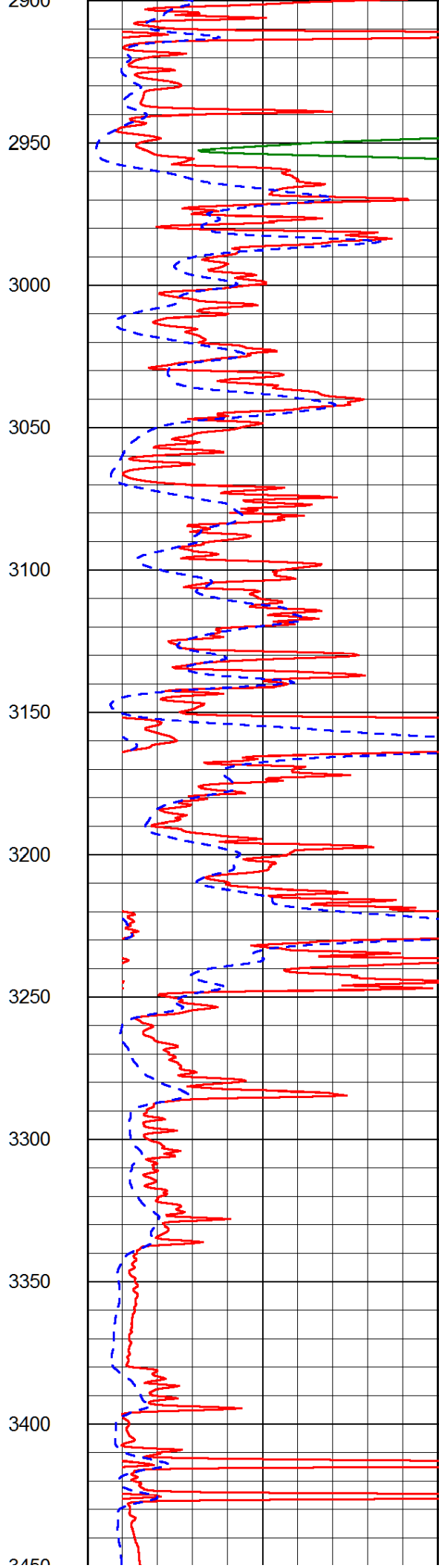
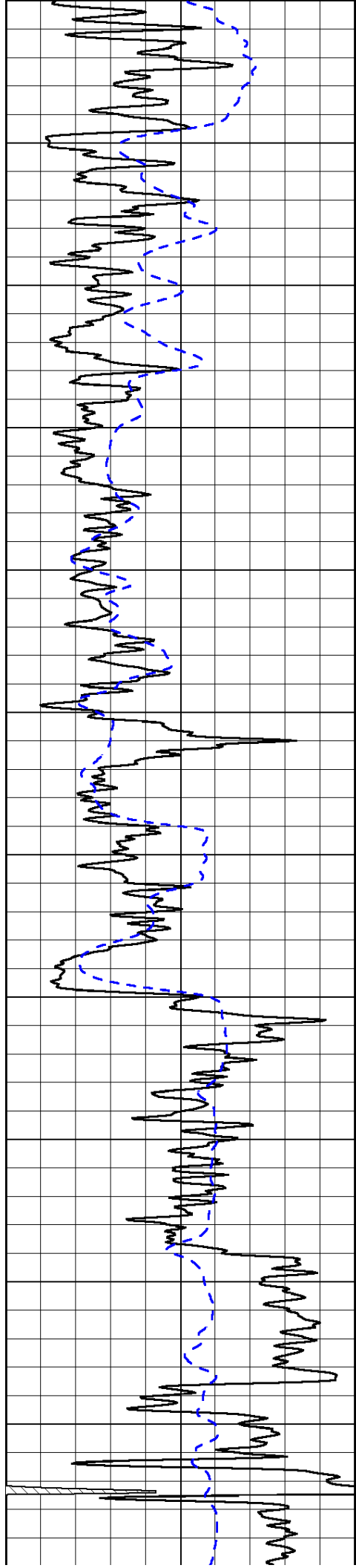


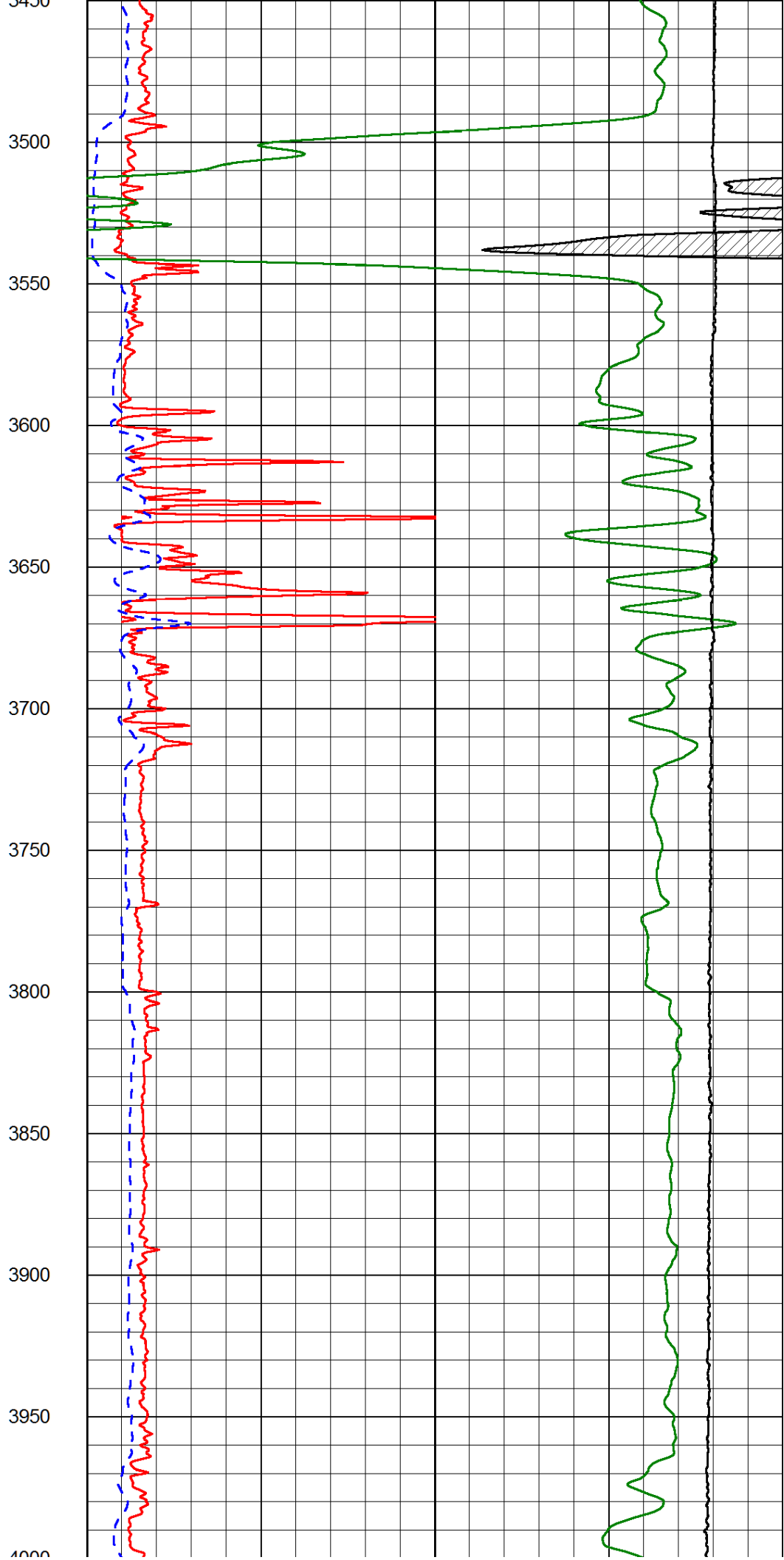
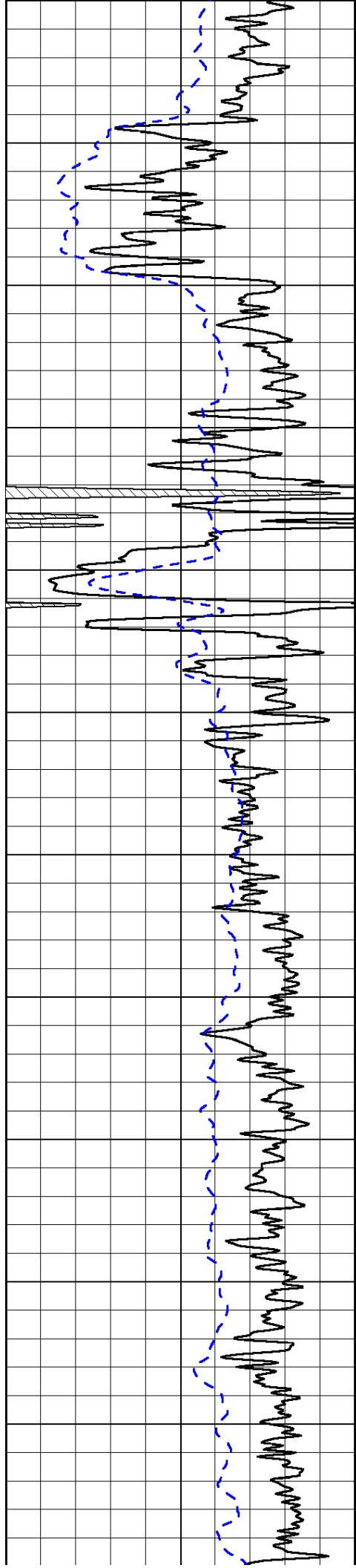


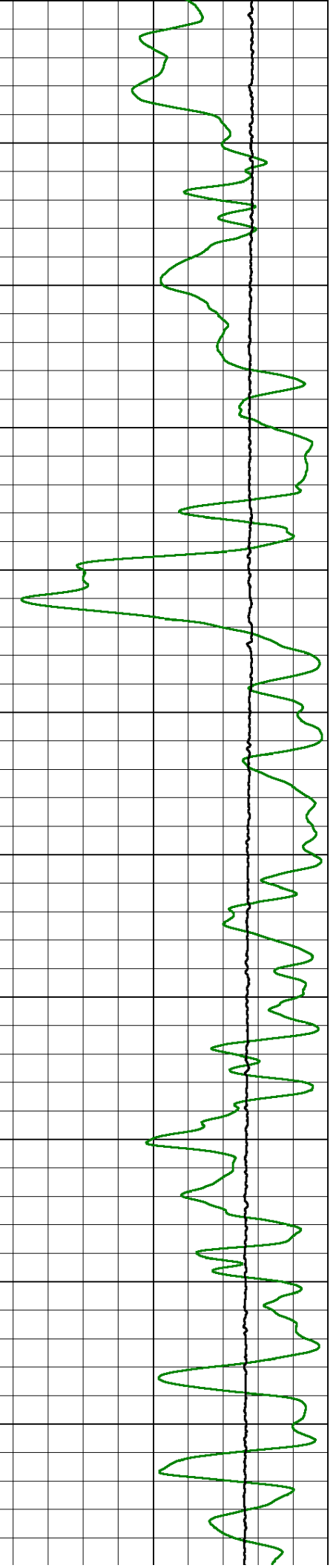
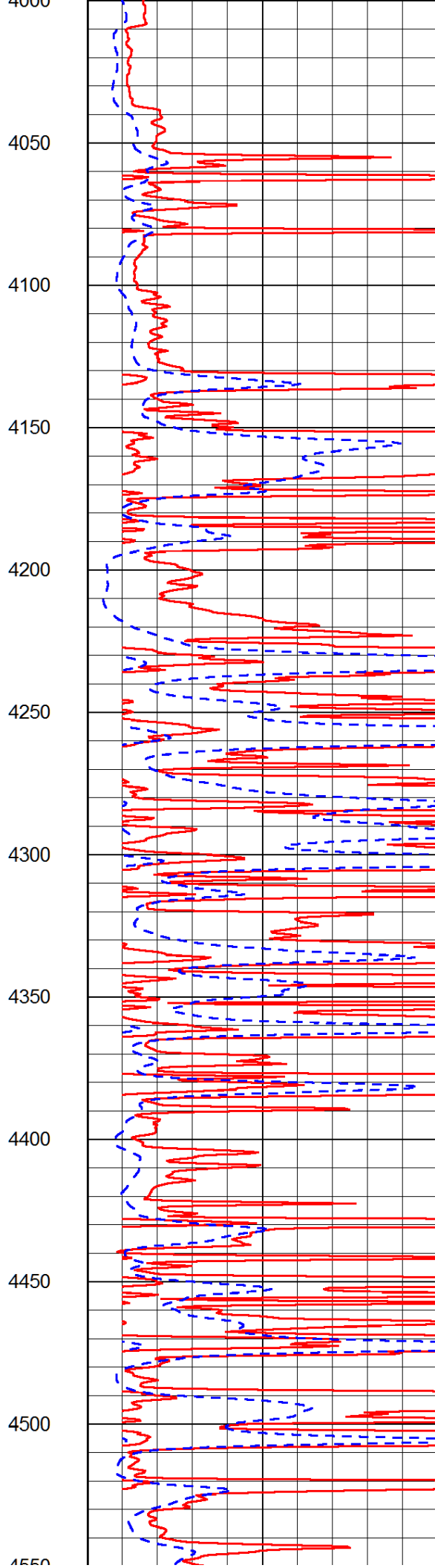
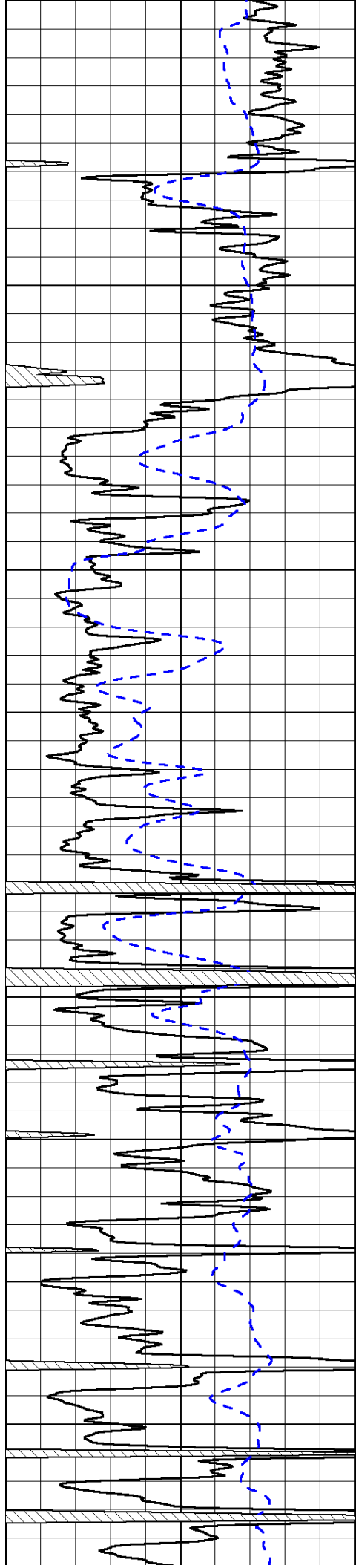


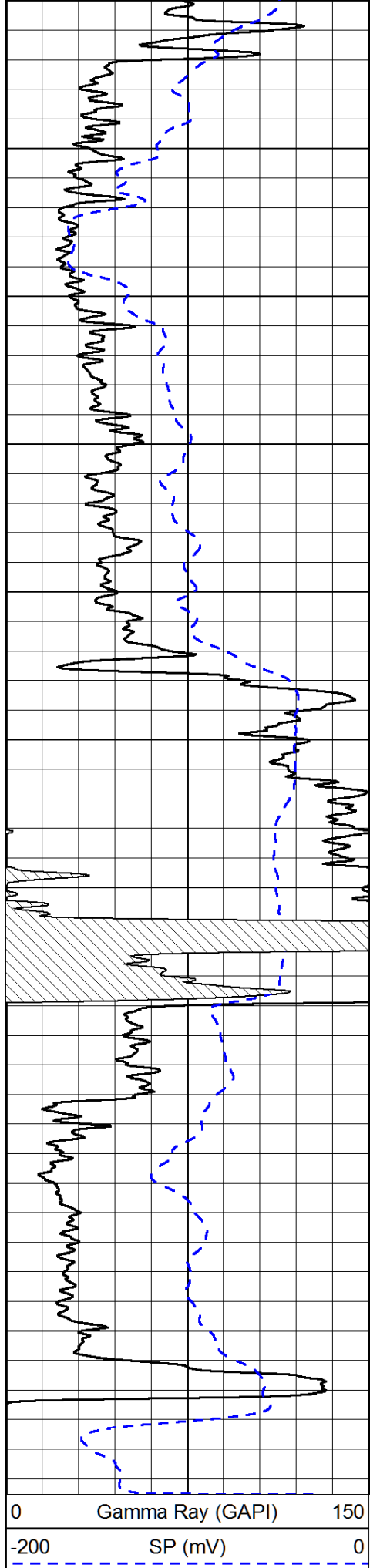




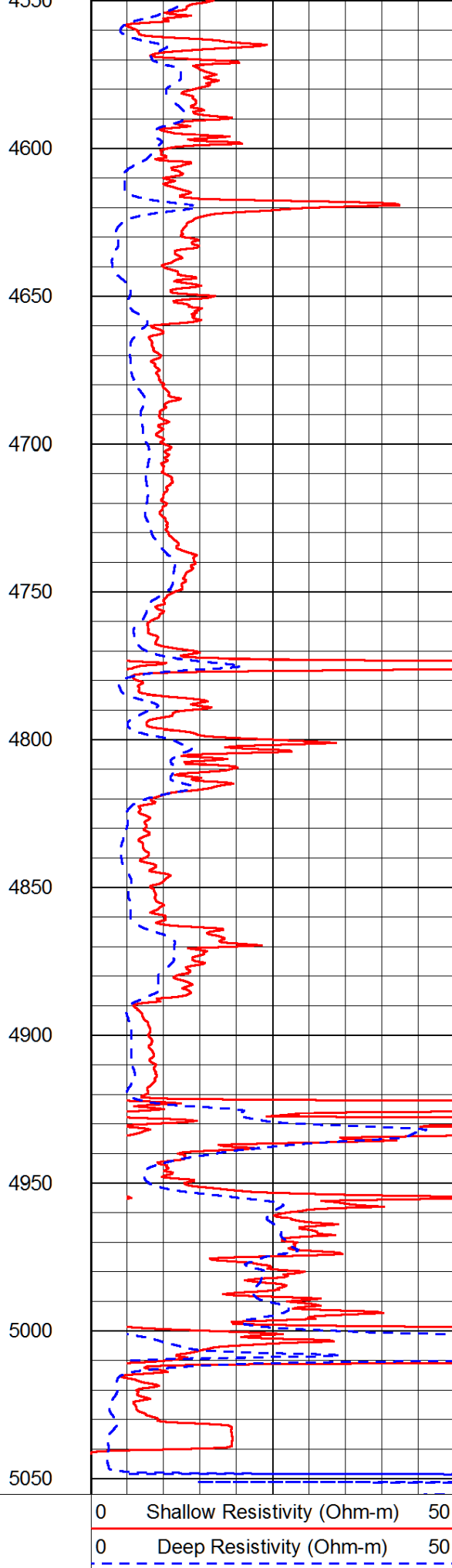




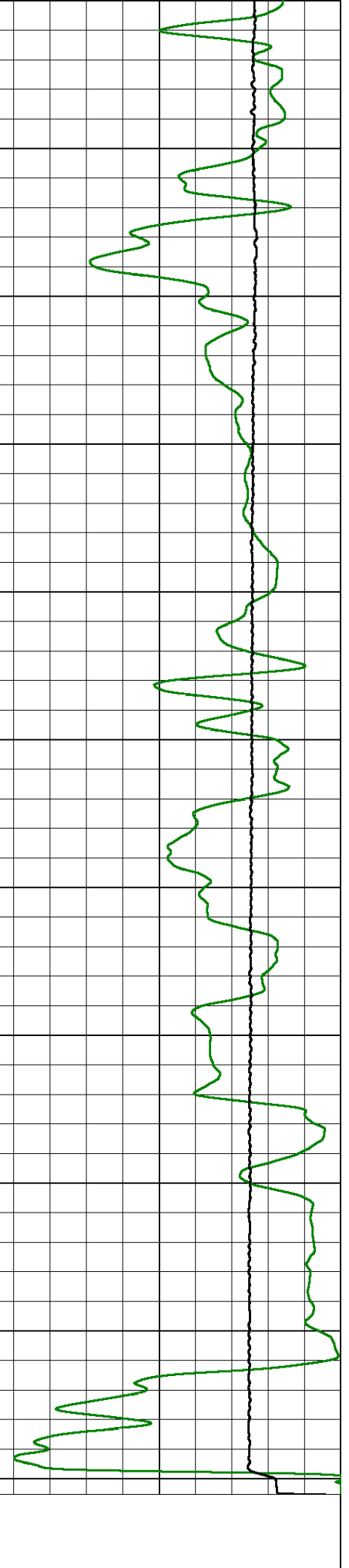




0 Gamma Ray (GAPI) 150
 -200 SP (mV) 0



0 Shallow Resistivity (Ohm-m) 50
 0 Deep Resistivity (Ohm-m) 50



1000 Conductivity (Ohm-m) 0
 15000 Line Tension (lb) 0

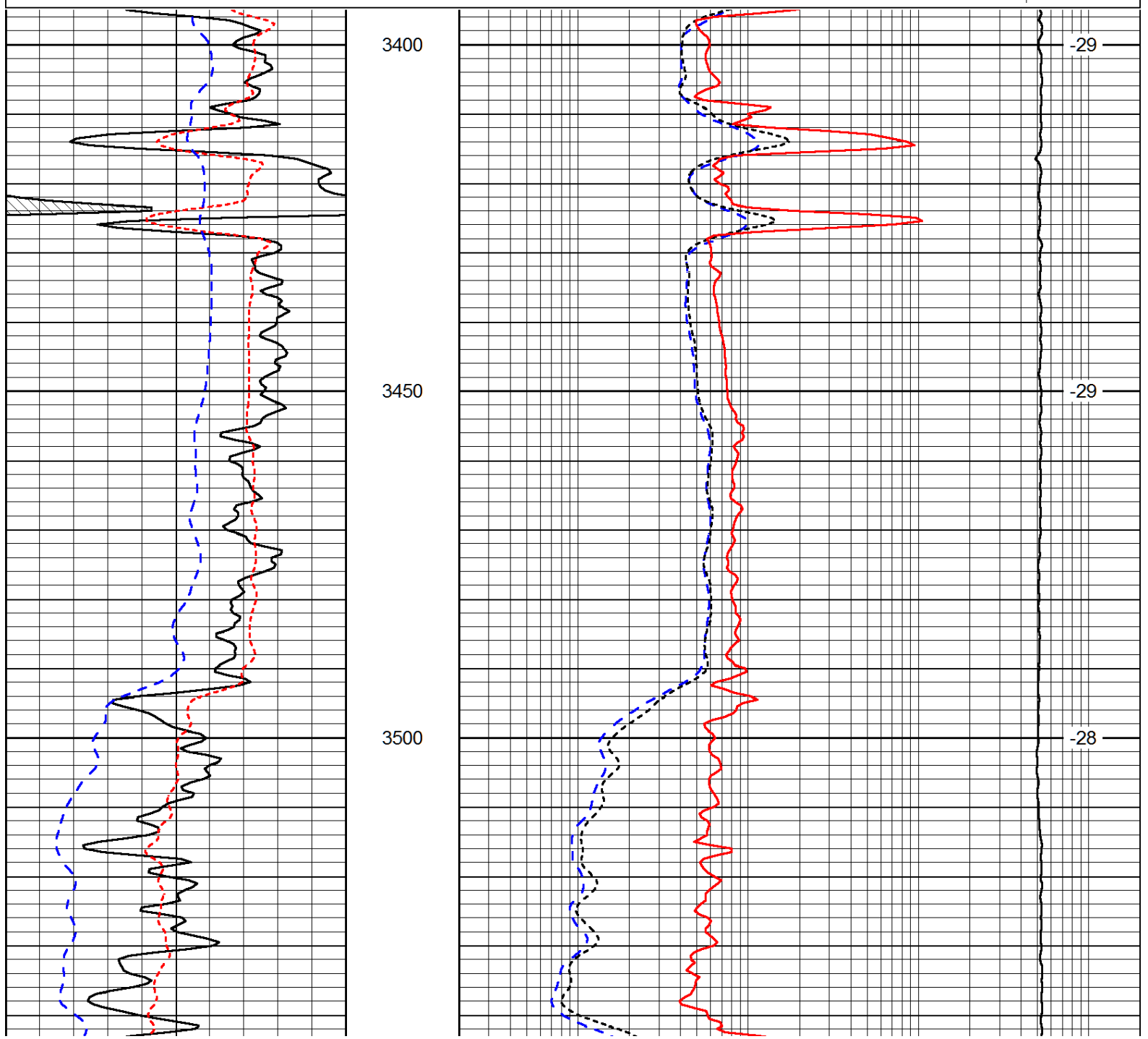
| | | |
|---------------------|--------------------------|-----|
| Shallow Resistivity | | |
| 50 | (Ohm-m) | 500 |
| 50 | Deep Resistivity (Ohm-m) | 500 |

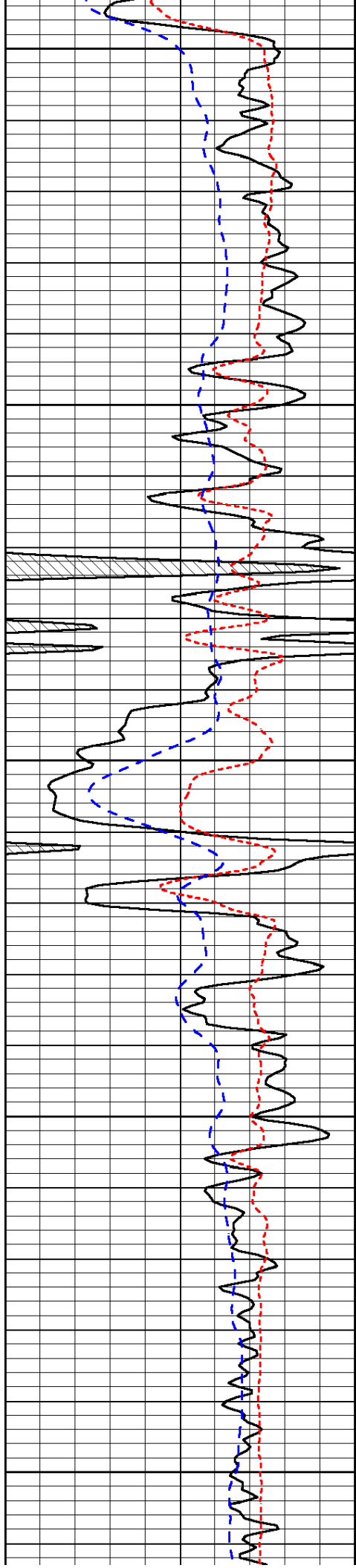
Database File: n-10110413hd.db
 Dataset Pathname: dil/n10stack
 Presentation Format: dil
 Dataset Creation: Mon Nov 04 12:36:42 2013
 Charted by: Depth in Feet scaled 1:240

| | | |
|------|------------------|-----|
| 0 | Gamma Ray (GAPI) | 150 |
| -160 | RXO/RT | 40 |
| -200 | SP (mV) | 0 |

| | | |
|-------|-----------------------------|------|
| 0.2 | Deep Resistivity (Ohm-m) | 2000 |
| 0.2 | Medium Resistivity (Ohm-m) | 2000 |
| 0.2 | Shallow Resistivity (Ohm-m) | 2000 |
| 10000 | Line Tension (lb) | 0 |

LSPD
(ft/min)





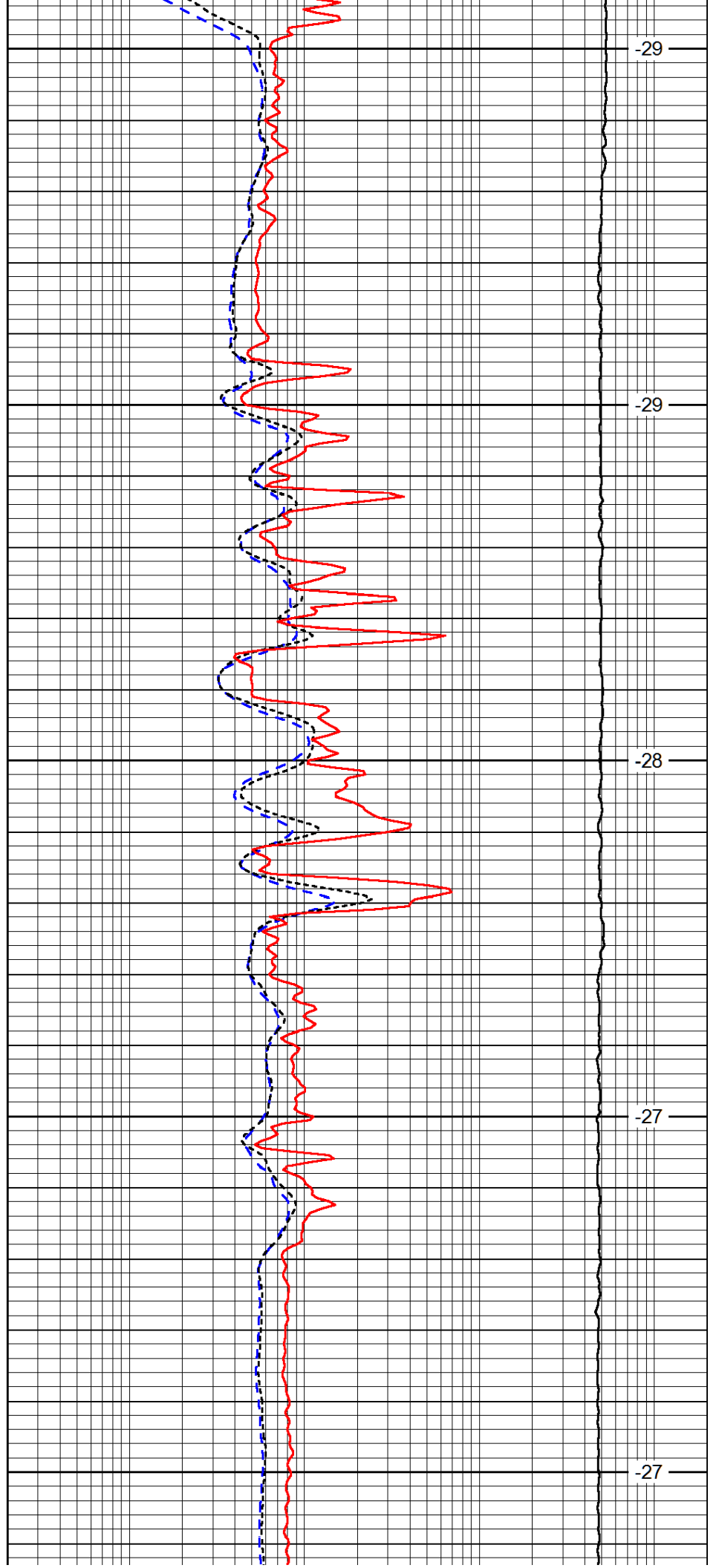
3550

3600

3650

3700

3750



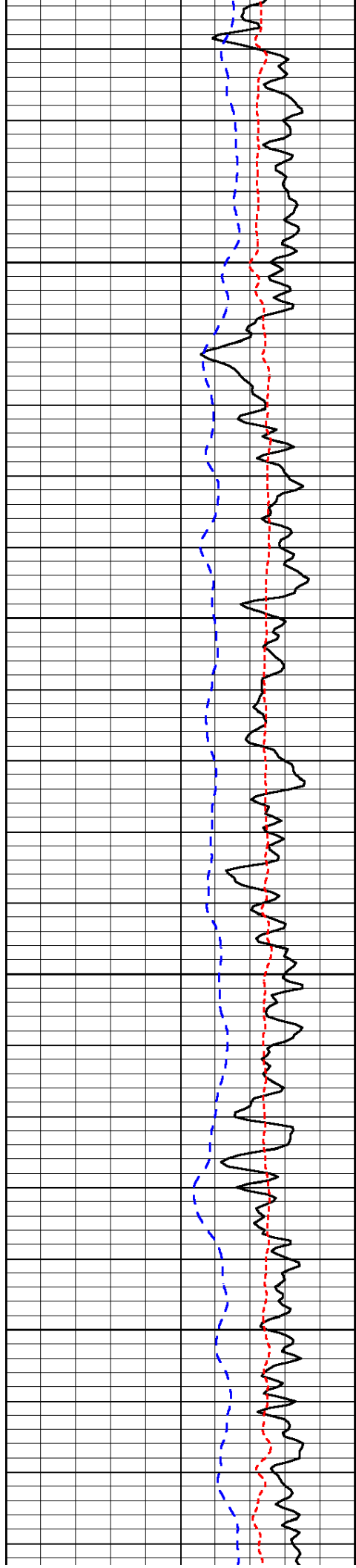
-29

-29

-28

-27

-27

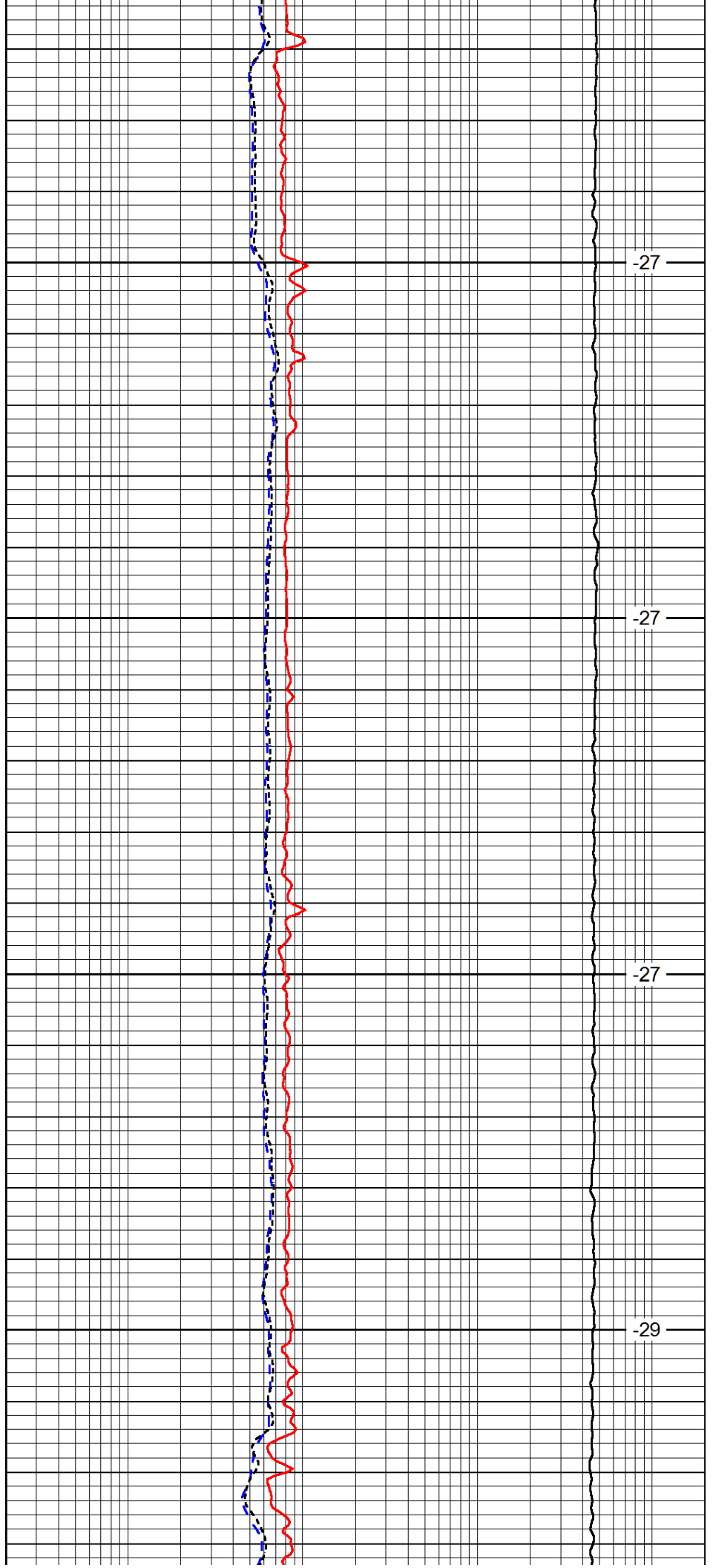


3800

3850

3900

3950

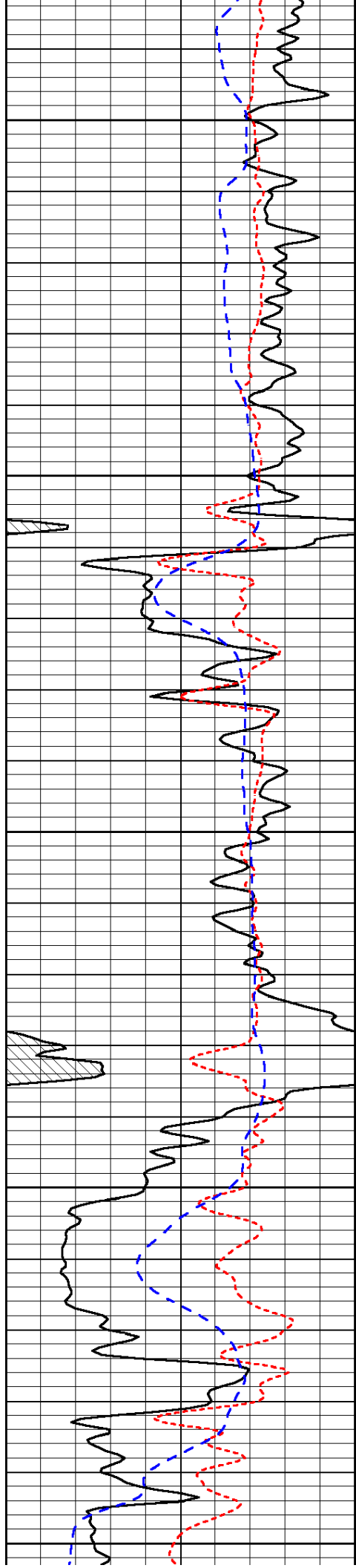


-27

-27

-27

-29



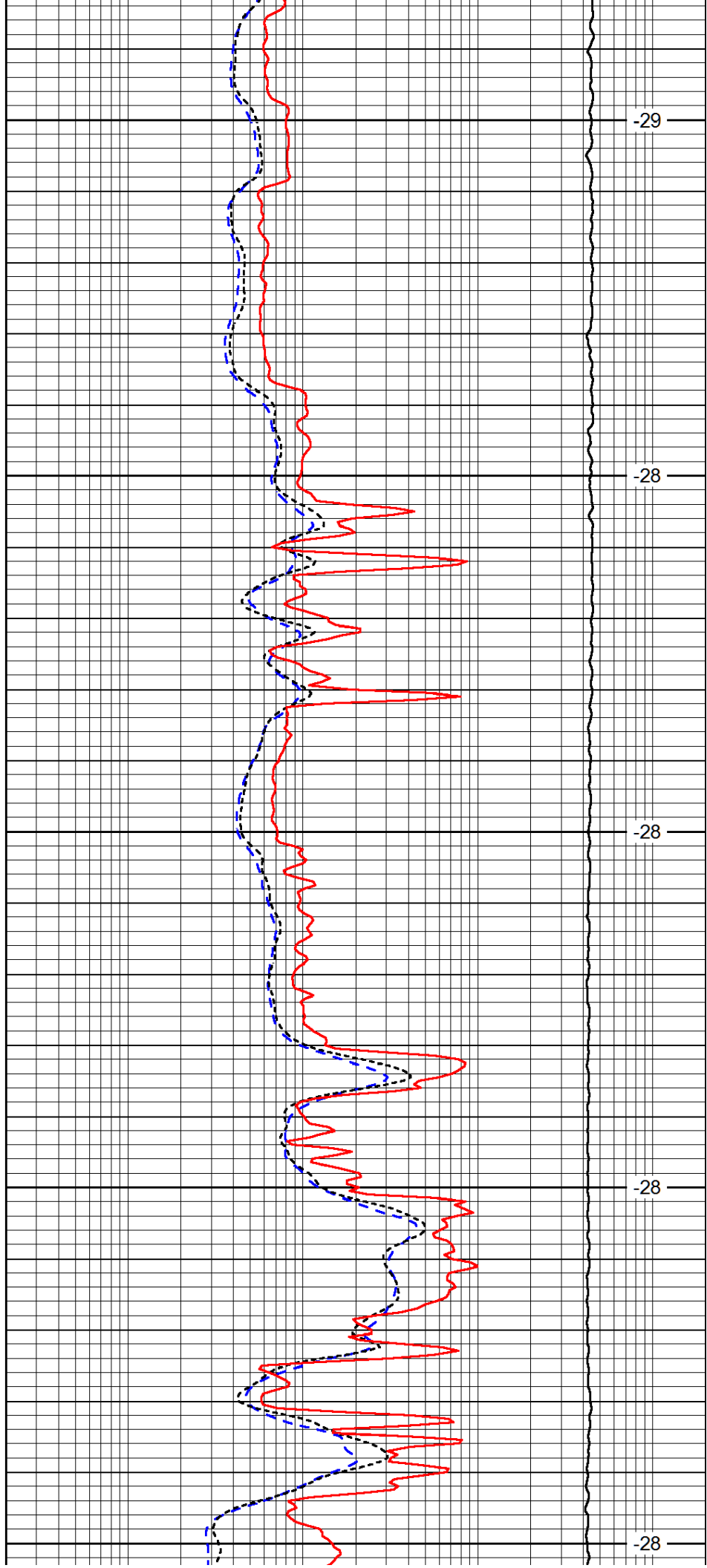
4000

4050

4100

4150

4200



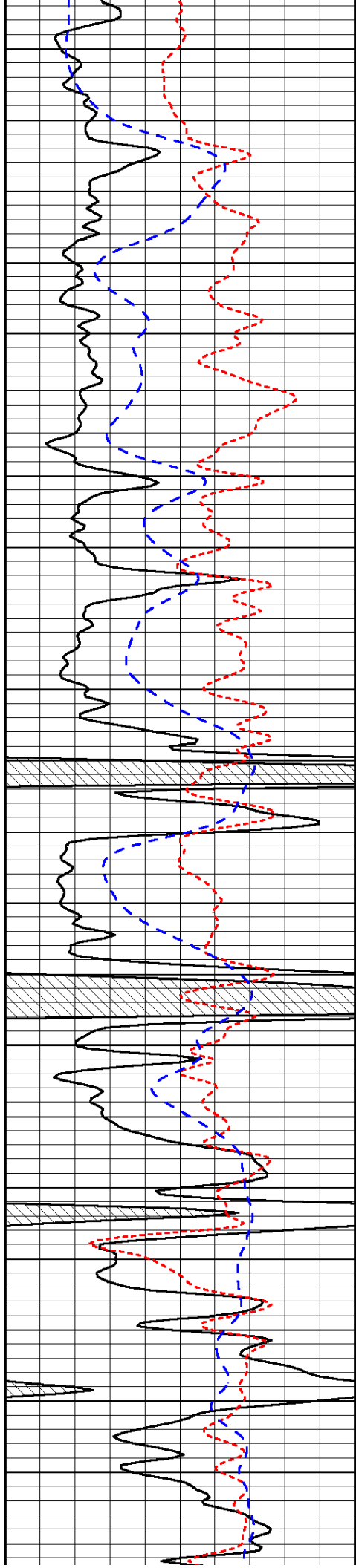
-29

-28

-28

-28

-28

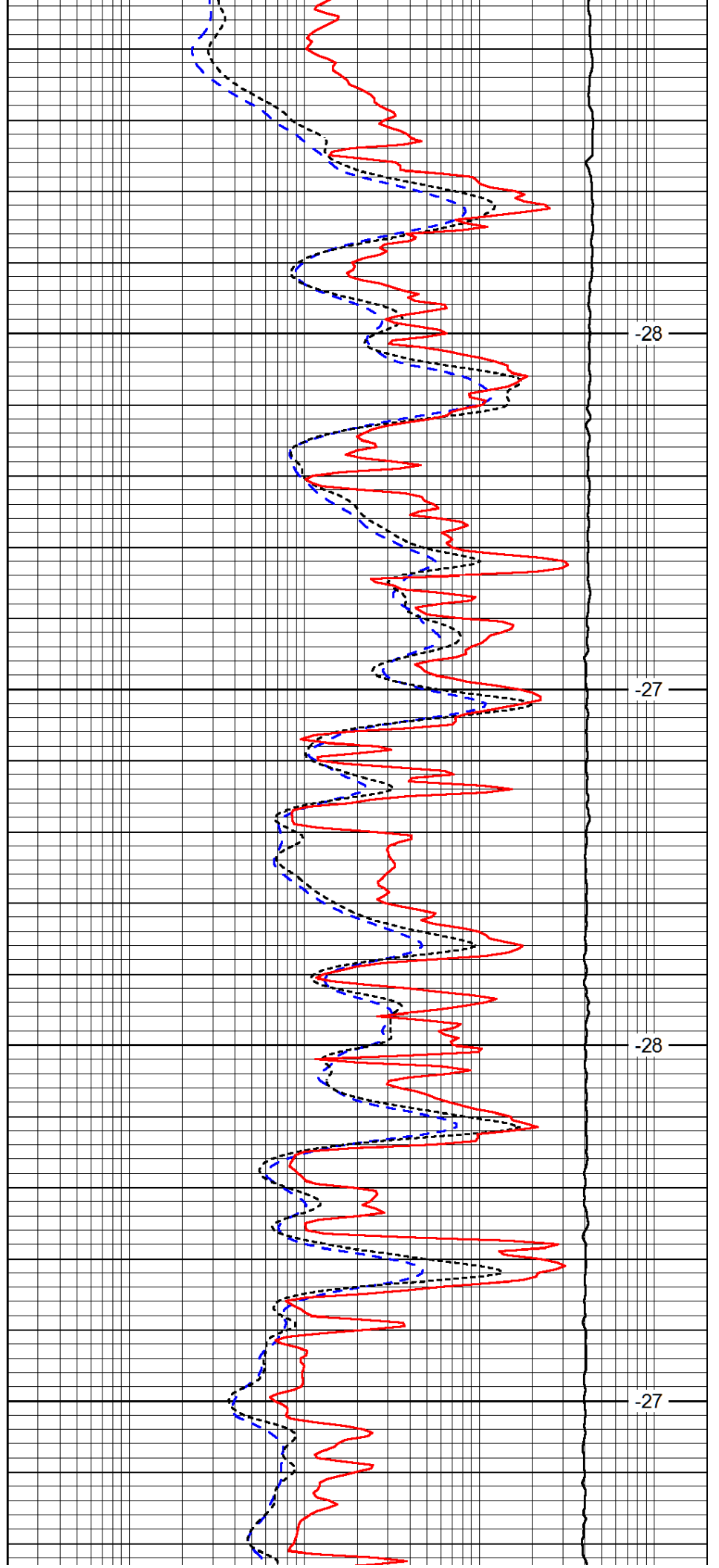


4250

4300

4350

4400

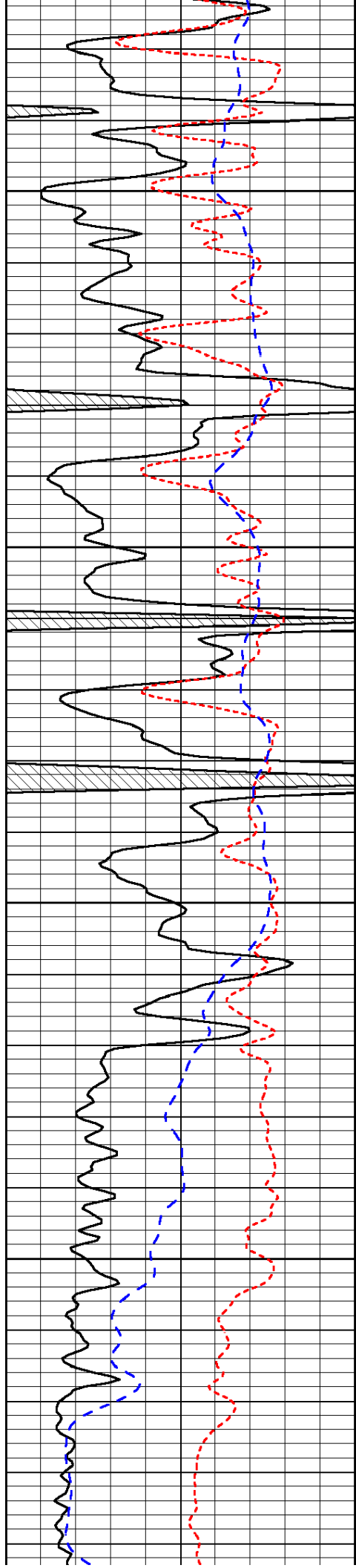


-28

-27

-28

-27

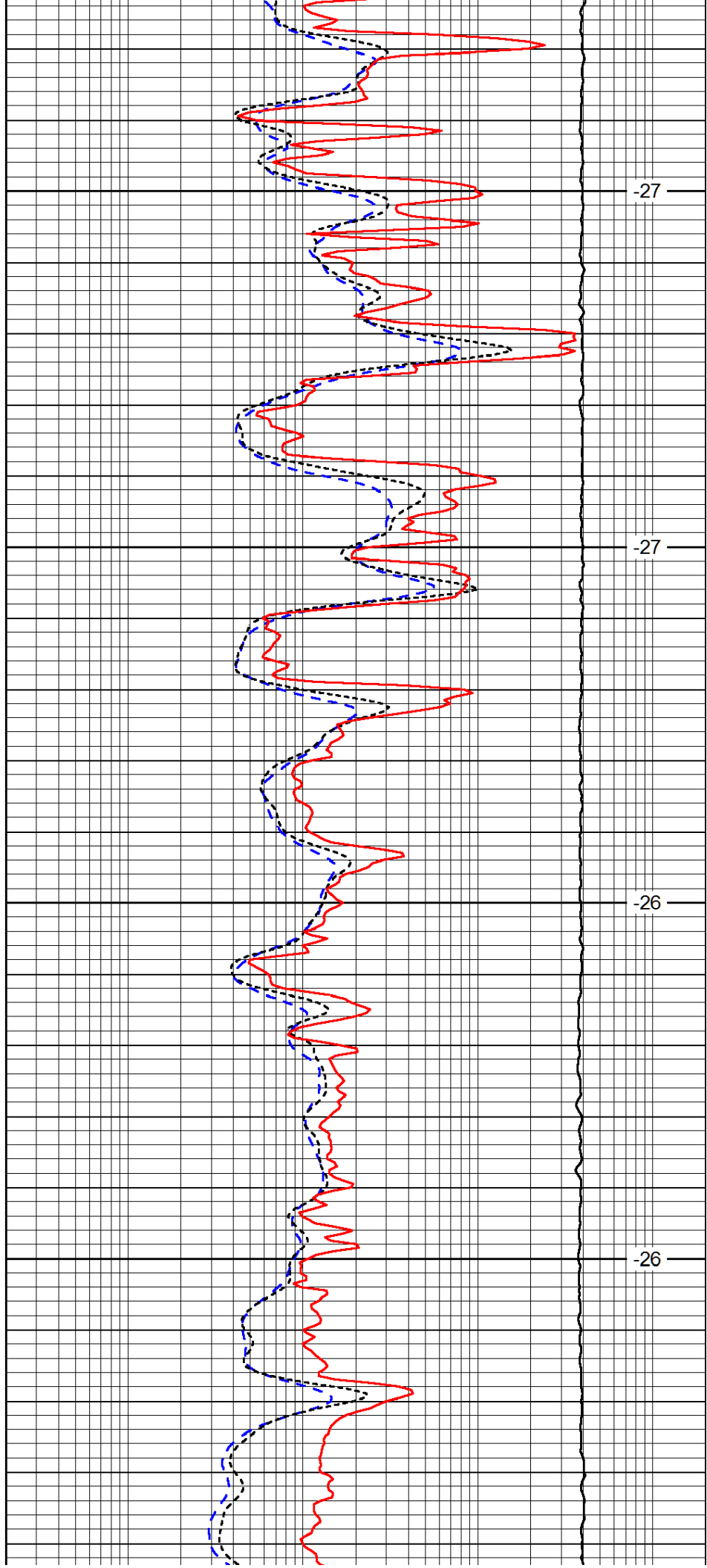


4450

4500

4550

4600

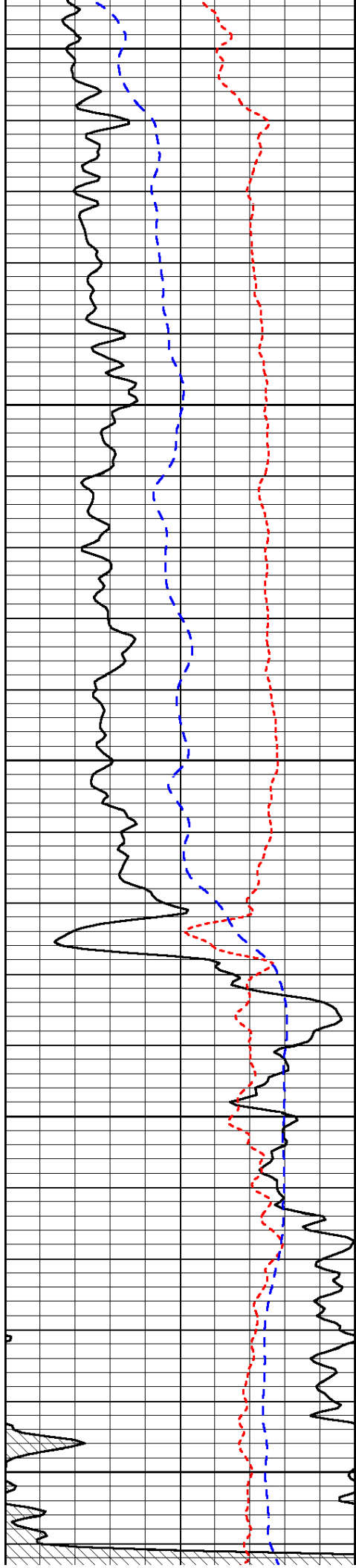


-27

-27

-26

-26



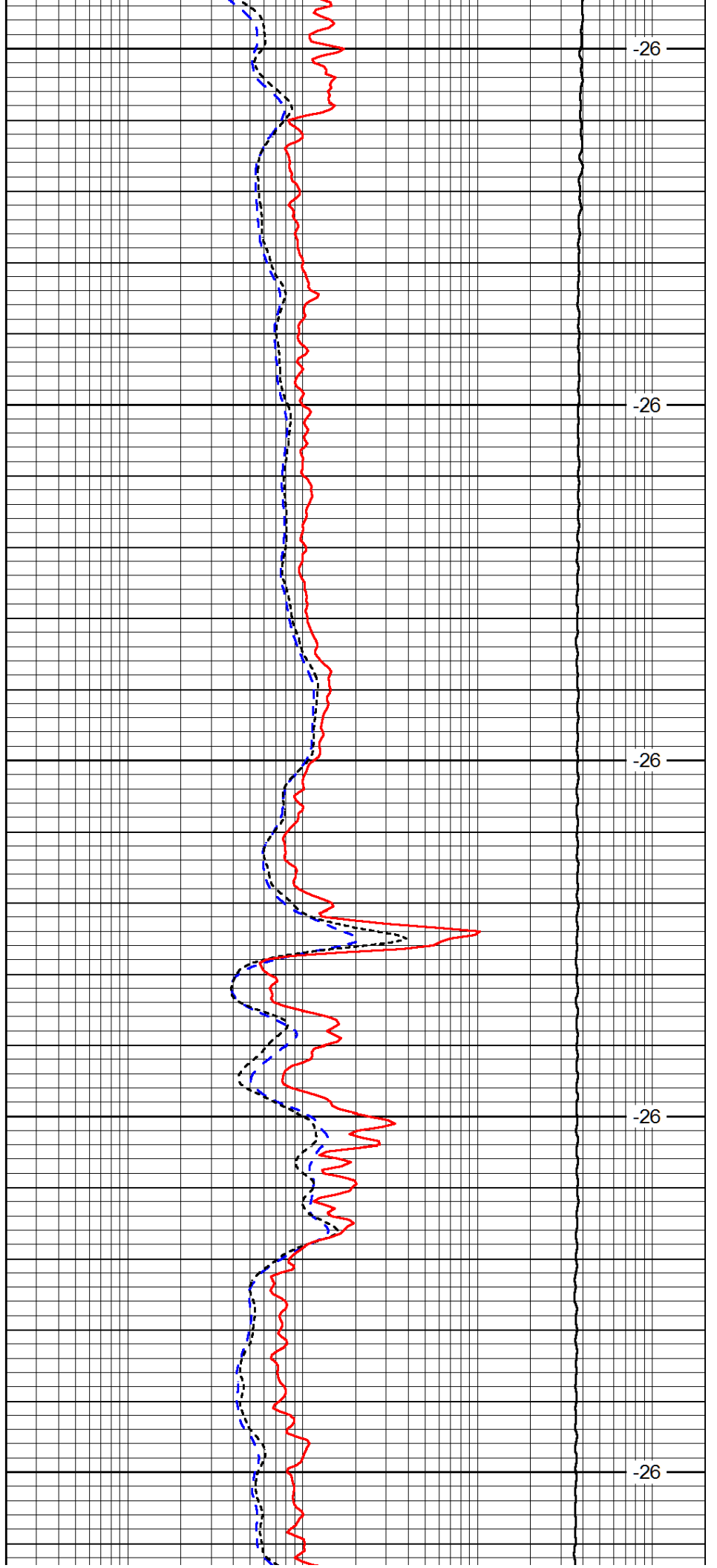
4650

4700

4750

4800

4850



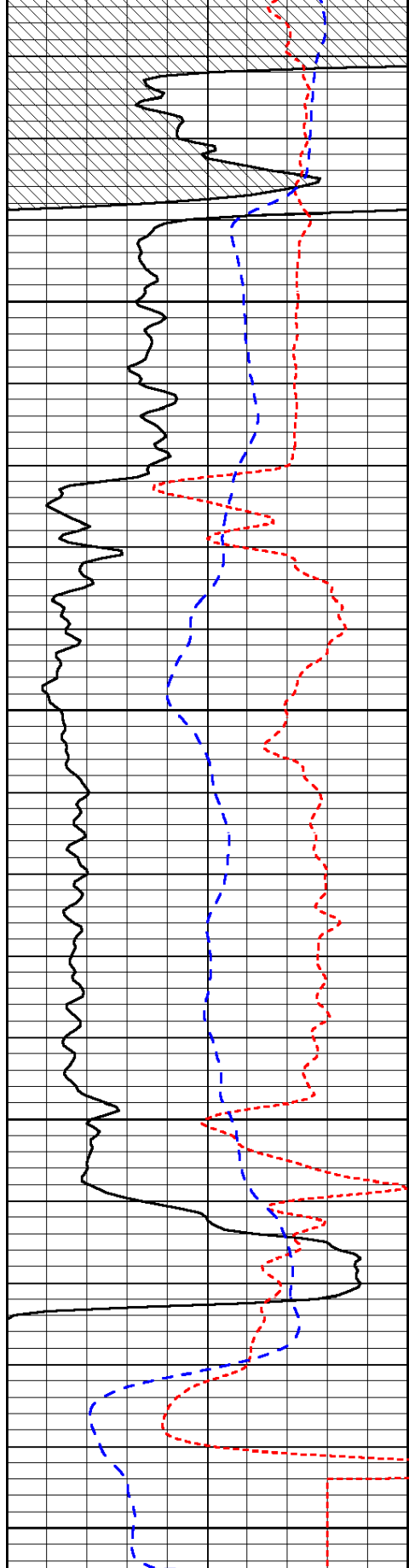
-26

-26

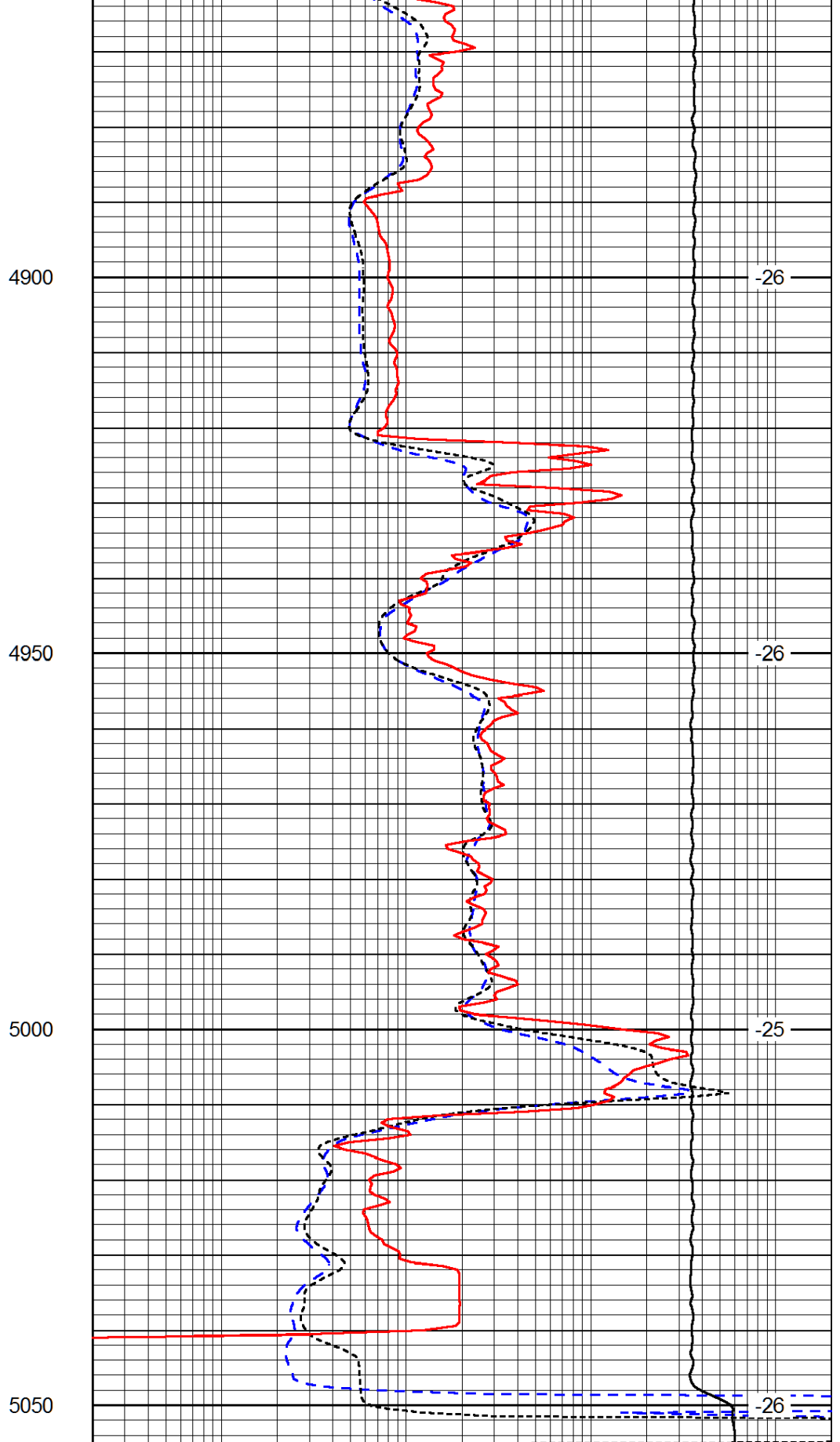
-26

-26

-26



| | | |
|------|------------------|-----|
| 0 | Gamma Ray (GAPI) | 150 |
| -160 | RXO/RT | 40 |
| -200 | SP (mV) | 0 |



| | | |
|-------|-----------------------------|------|
| 0.2 | Deep Resistivity (Ohm-m) | 2000 |
| 0.2 | Medium Resistivity (Ohm-m) | 2000 |
| 0.2 | Shallow Resistivity (Ohm-m) | 2000 |
| 10000 | Line Tension (lb) | 0 |

LSPD
(ft/min)

