



MIDWEST SURVEYS
 LOGGING - PERFORATING - CONSULTING SERVICES
 P.O. Box 68, Osawatomie, KS 66064
 913.755.2128

GAMMA RAY / NEUTRON / CCL

File No. _____

Company **Ensminger Energy, LLC.**

Well **McFadden No. E-5**

Field **Moran**

County **Allen**

State **Kansas**

Location _____

Other Services
Perforate

165' FSL & 495' FEL
SW-SE-SE-SE

Sec. 1 Twp. 25S Rge. 19E

Permament Datum Log Measured From Drilling Measured From

GL GL GL

Elevation K.B. NA D.F. NA G.L. NA

Date 10-04-2013

Run Number One

Depth Driller 890.0

Bottom Logged Interval 877.0

Top Log Interval 20.0

Fluid Level _____

Fluid Level _____

Type Fluid _____

Density / Viscosity _____

Salinity - PPM Cl _____

Max Recorded Temp _____

Estimated Cement Top _____

Equipment No. _____

Location 102 Osawatomie

Recorded By Gary Winkisch

Witnessed By _____

Witnessed By _____

BORE-HOLE RECORD

Run No. BIT FROM TO SIZE WGT. FROM TO

One 9.875" 22.6 7.00" 17.0# 0.0 22.8

Two 5.875" 22.6 2.875" 6.5# 0.0 683.7

CASING RECORD

Run No. BIT FROM TO SIZE WGT. FROM TO

One 9.875" 22.6 7.00" 17.0# 0.0 22.8

Two 5.875" 22.6 2.875" 6.5# 0.0 683.7

TO 22.8

TO 683.7

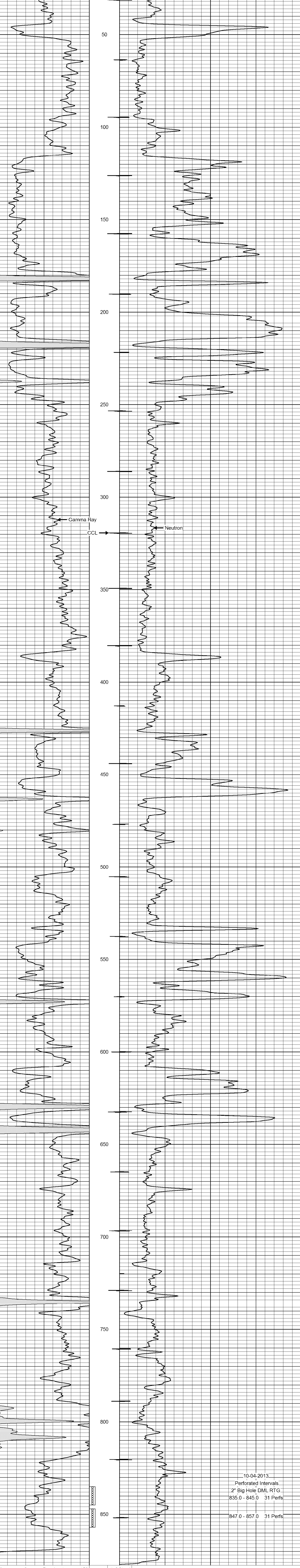
<<< Fold Here >>>

All interpretations are opinions based on inferences from electrical or other measurements and we cannot and do not guarantee the accuracy or correctness of any interpretation, and we shall not, except in the case of gross or willful negligence on our part, be liable or responsible for any loss, costs, damages, or expenses incurred or sustained by anyone resulting from any interpretation made by any of our officers, agents or employees. These interpretations are also subject to our general terms and conditions set out in our current Price Schedule.

Comments

Drilling Contractor :
EK Energy, LLC.

Database File: mcfadden5e.db
 Dataset Pathname: pass1
 Presentation Format: gr-n-ccl
 Dataset Creation: Fri Oct 04 13:39:19 2013 by Log SCH 111116
 Charted by: Depth in Feet scaled 1:240



10-04-2013
 Perforated Intervals
 2" Big Hole DML RTG
 835.0 - 845.0 31 Perfs

847.0 - 857.0 31 Perfs