



Pioneer Energy Services

Dual Induction Log

15-171-20,935-00-00

API No.

Company **Landmark Resources, Inc.**

Well **Decker #1-17**

Field **Wildcat**

County **Scott** State

Kansas

Location

2525' FNL & 2100' FEL

Other Services
CNL/CDL
MEL/BHCS

Sec: 17 Twp: 17 S Rge: 34 W

Permanent Datum Ground Level Elevation 3139
Log Measured From Kelly Bushing 11 Ft. Above Perm. Datum

Drilling Measured From Kelly Bushing

Elevation
K.B. 3150
D.F.
G.L. 3139

Date 3/20/2013

Run Number One

Depth Driller 5010

Depth Logger 5011

Bottom Logged Interval 5010

Top Log Interval 200

Casing Driller 8.625 @ 236

Casing Logger 231

Bit Size 7.875

Type Fluid in Hole Chemical

Salinity, ppm CL 9000

Density / Viscosity 9.5 48

pH / Fluid Loss 10.0 8.0

Source of Sample Flowline

Rm @ Meas. Temp .50 @ 44

Rmf @ Meas. Temp .38 @ 44

Rmc @ Meas. Temp .68 @ 44

Source of Rmf / Rmc Charts

Rm @ BHT .17 @ 126

Operating Rig Time 6 Hours

Max Rec. Temp. F 126

Equipment Number 17

Location Hays

Recorded By D. Martin

Witnessed By Wes Hansen

<<< Fold Here >>>

All interpretations are opinions based on inferences from electrical or other measurements and we cannot and do not guarantee the accuracy or correctness of any interpretation, and we shall not, except in the case of gross or willful negligence on our part, be liable or responsible for any loss, costs, damages, or expenses incurred or sustained by anyone resulting from any interpretation made by any of our officers, agents or employees. These interpretations are also subject to our general terms and conditions set out in our current Price Schedule.

Comments

Thank you for using Pioneer Energy Services
www.pioneerenergy.com
 785 625 3858
 Scott City, KS
 8 W, 1 N, 1 W, 5 1/2 N, 1 W, W Into

Database File: c:\warrior\data\landmark_decker #1-17\landhd.db
 Dataset Pathname: DIL\lanstk
 Presentation Format: dil2in
 Dataset Creation: Wed Mar 20 06:54:56 2013
 Charted by: Depth in Feet scaled 1:600

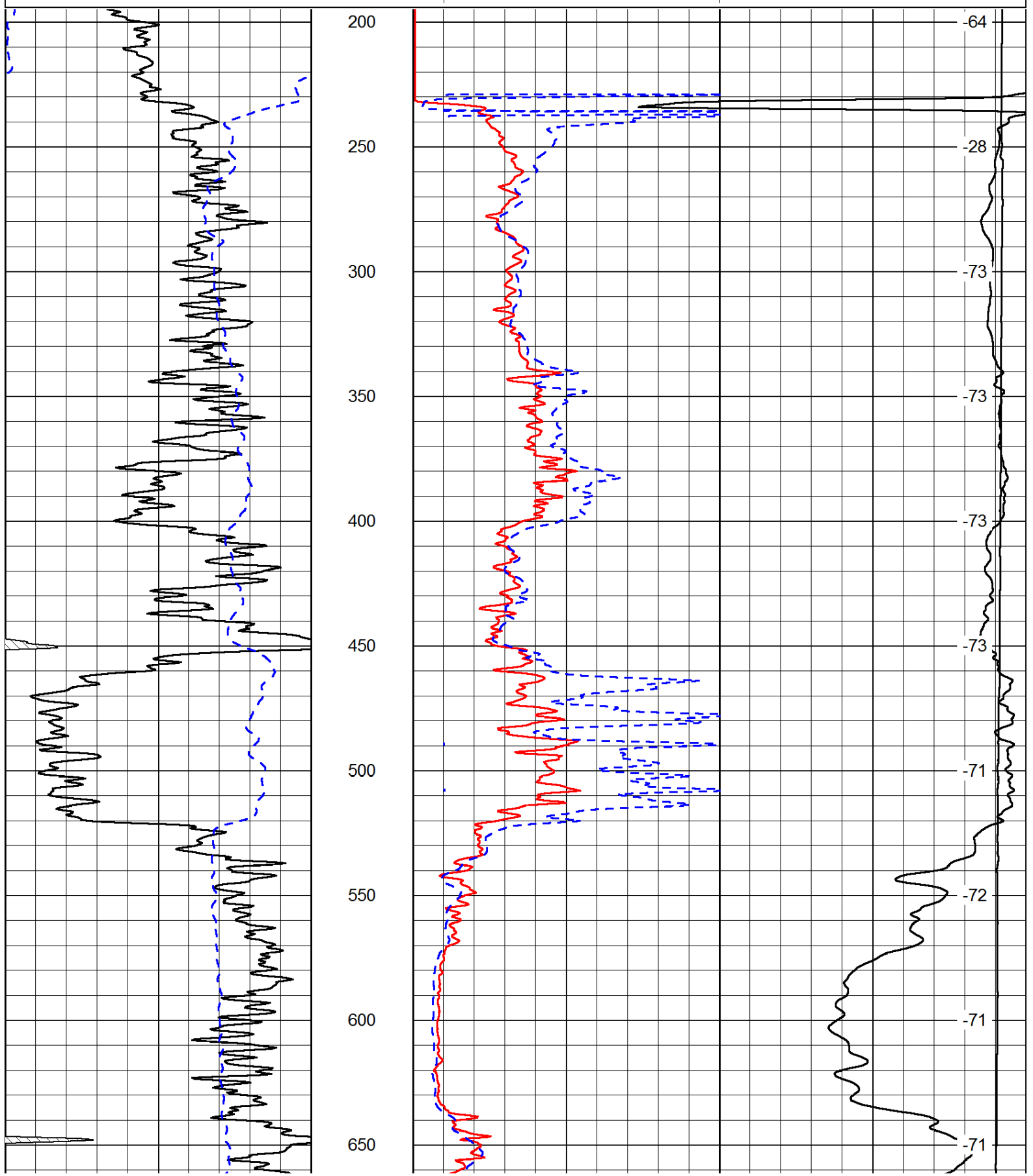
0	Gamma Ray	150
-200	SP (mV)	0

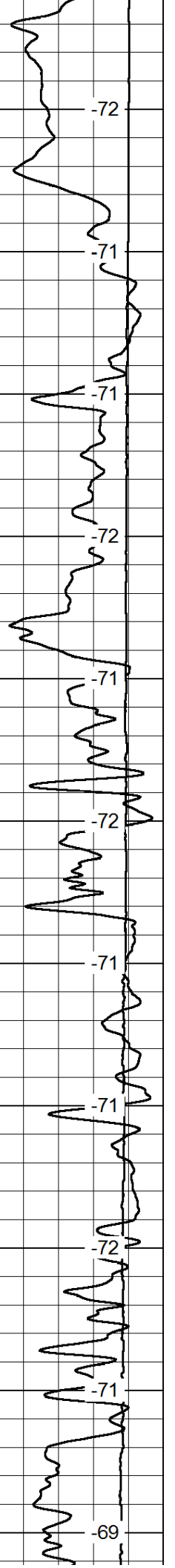
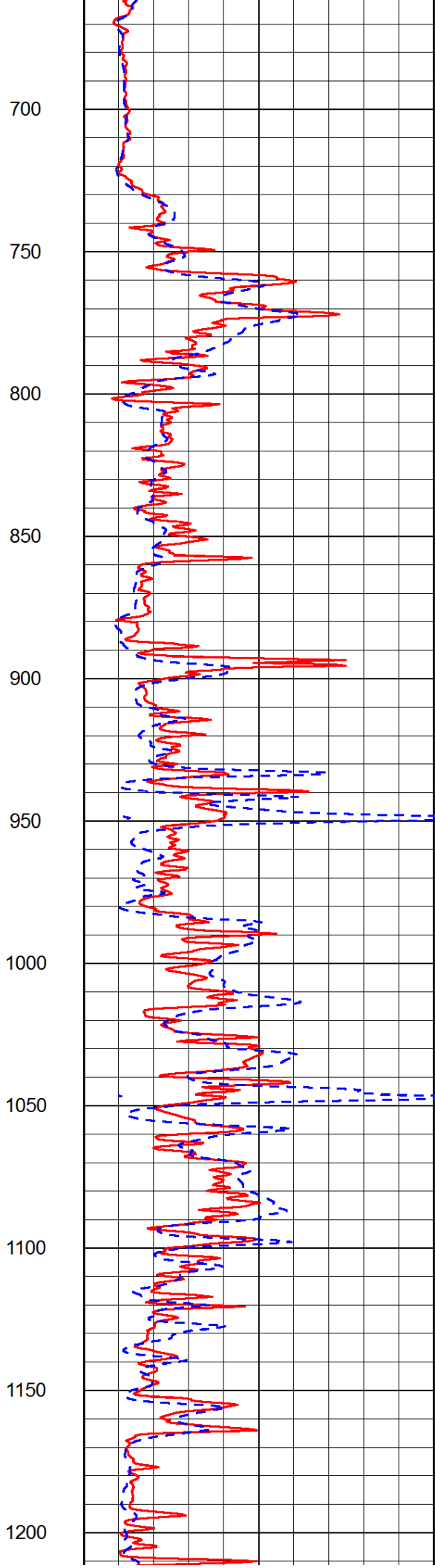
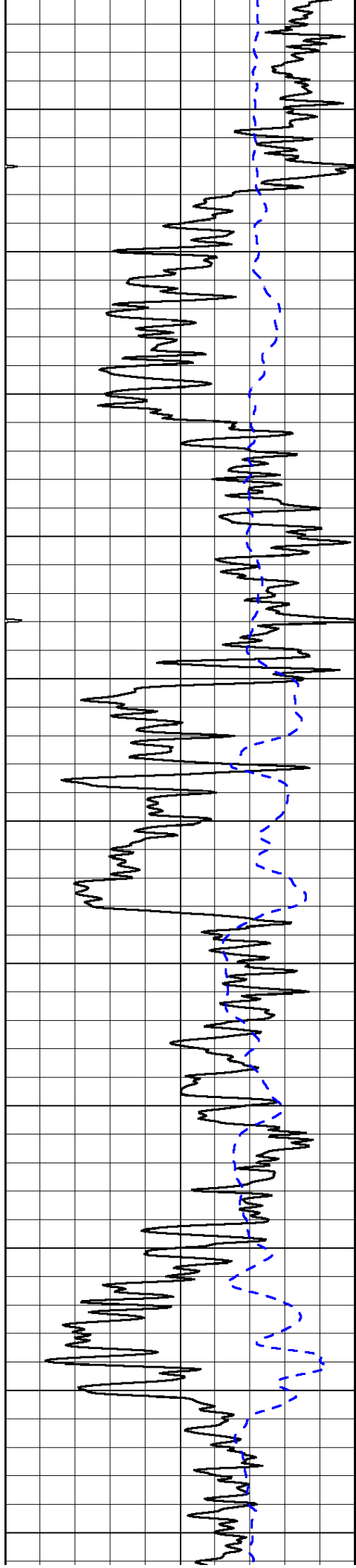
0	Shallow Resistivity	50
0	Deep Resistivity	50

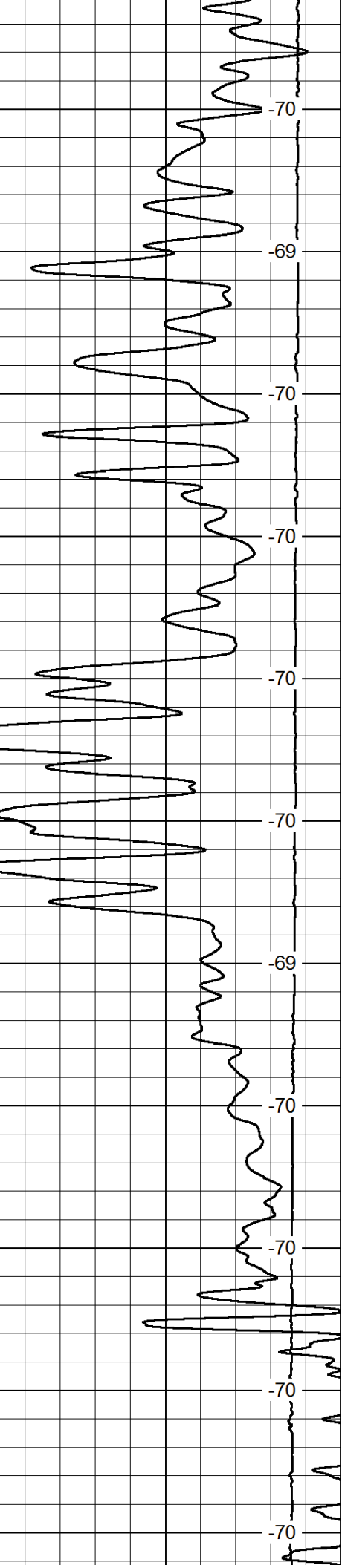
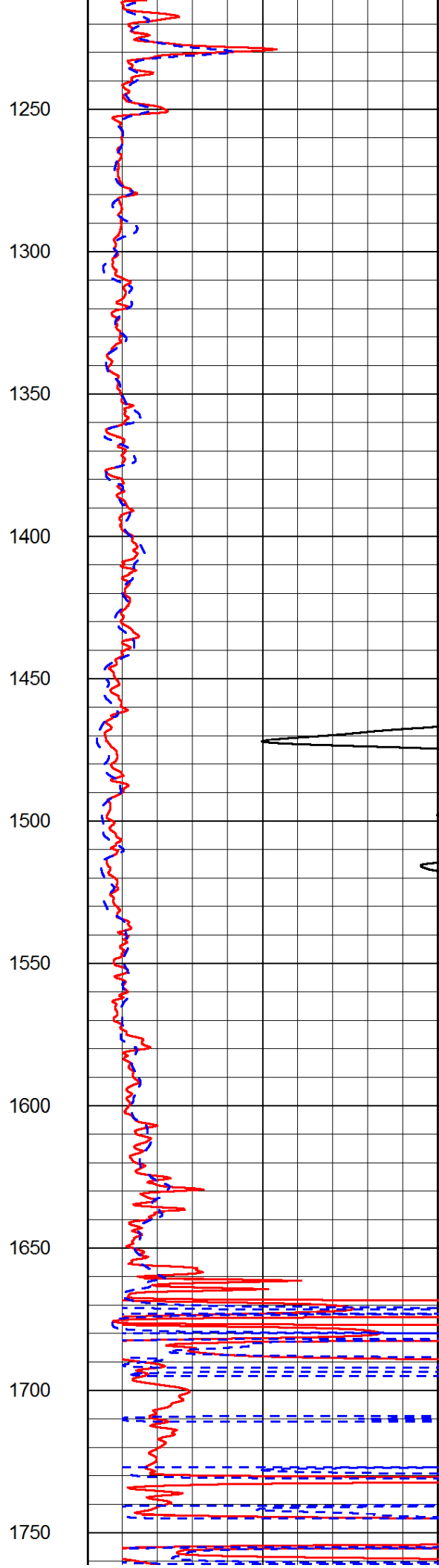
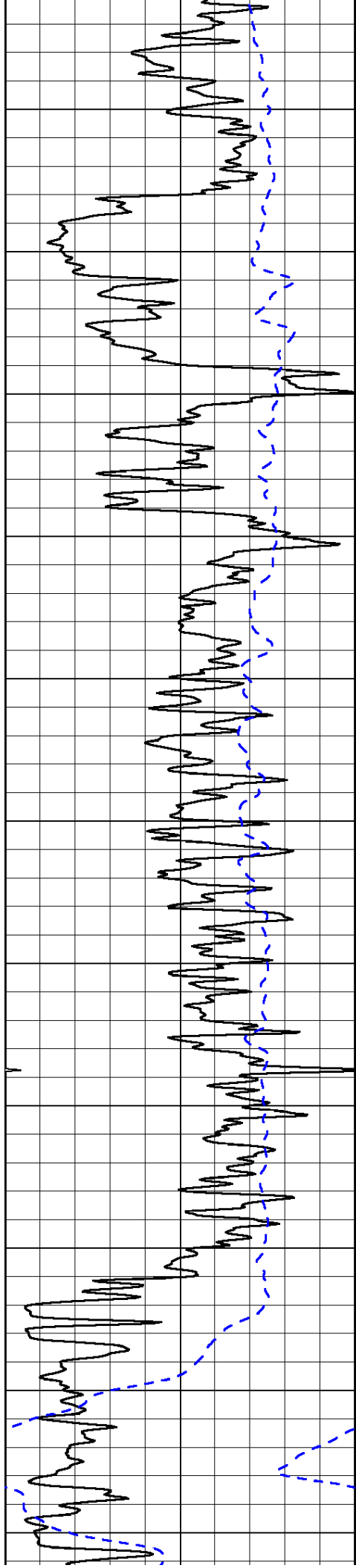
LSPD

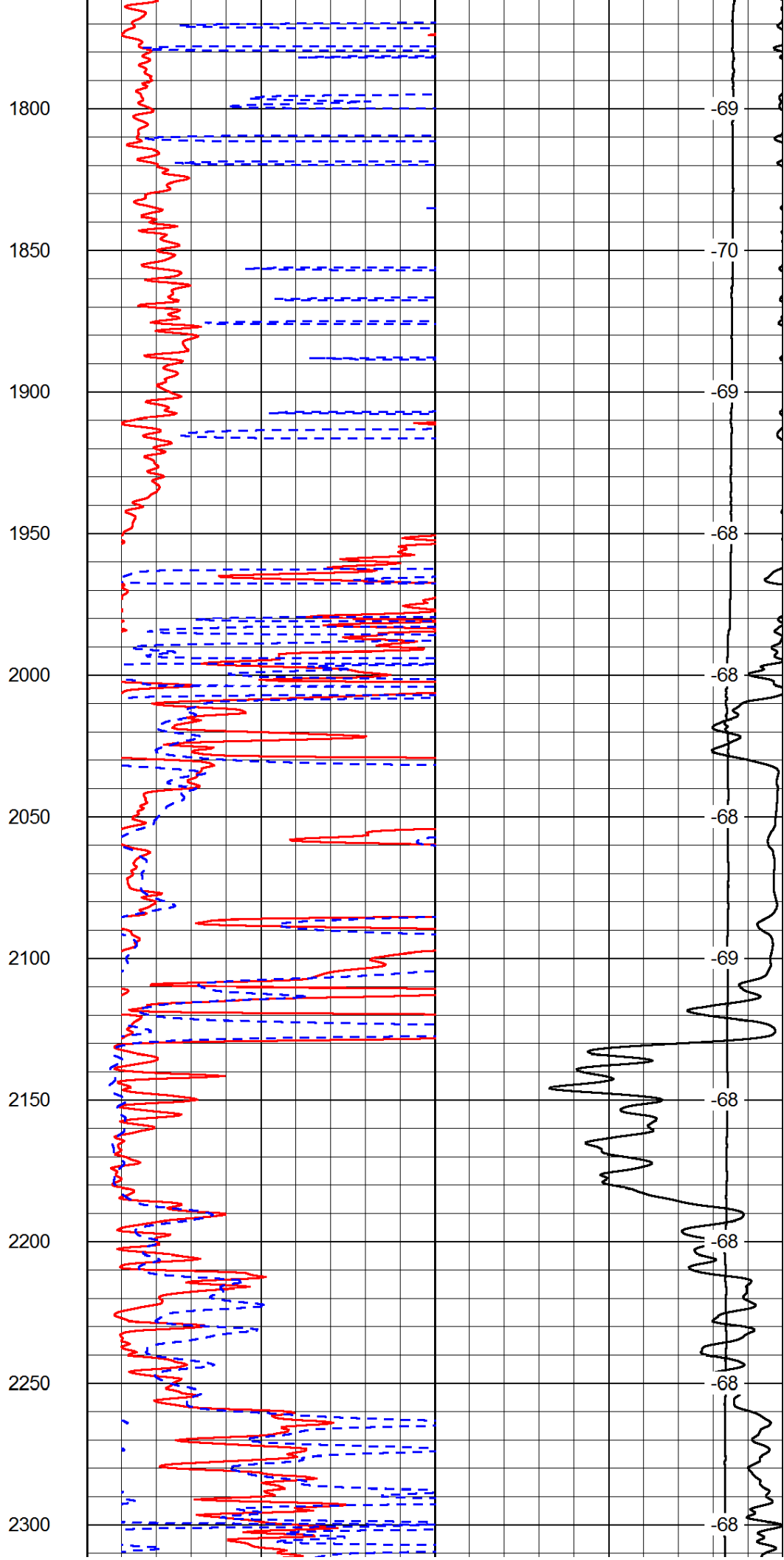
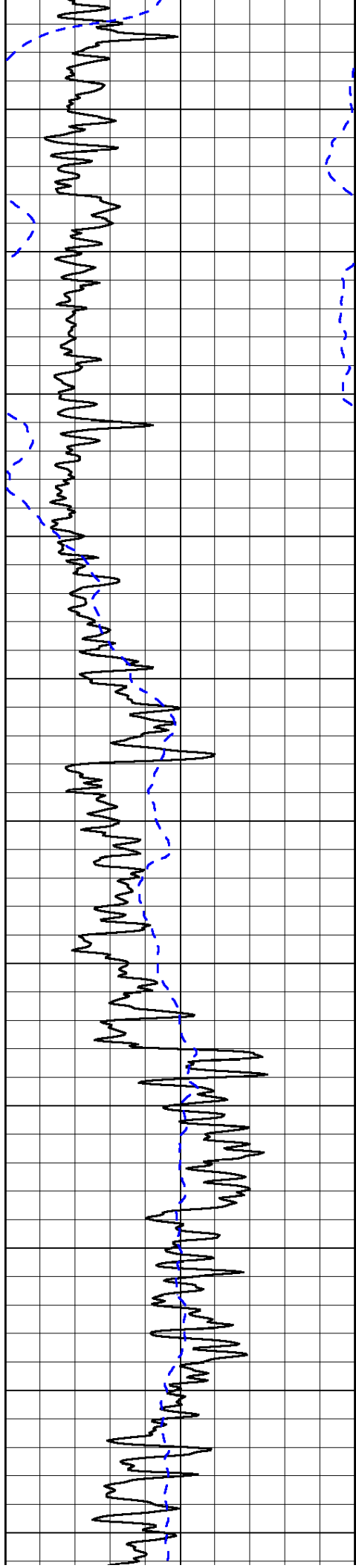
1000	Conductivity	0
15000	Line Tension	0

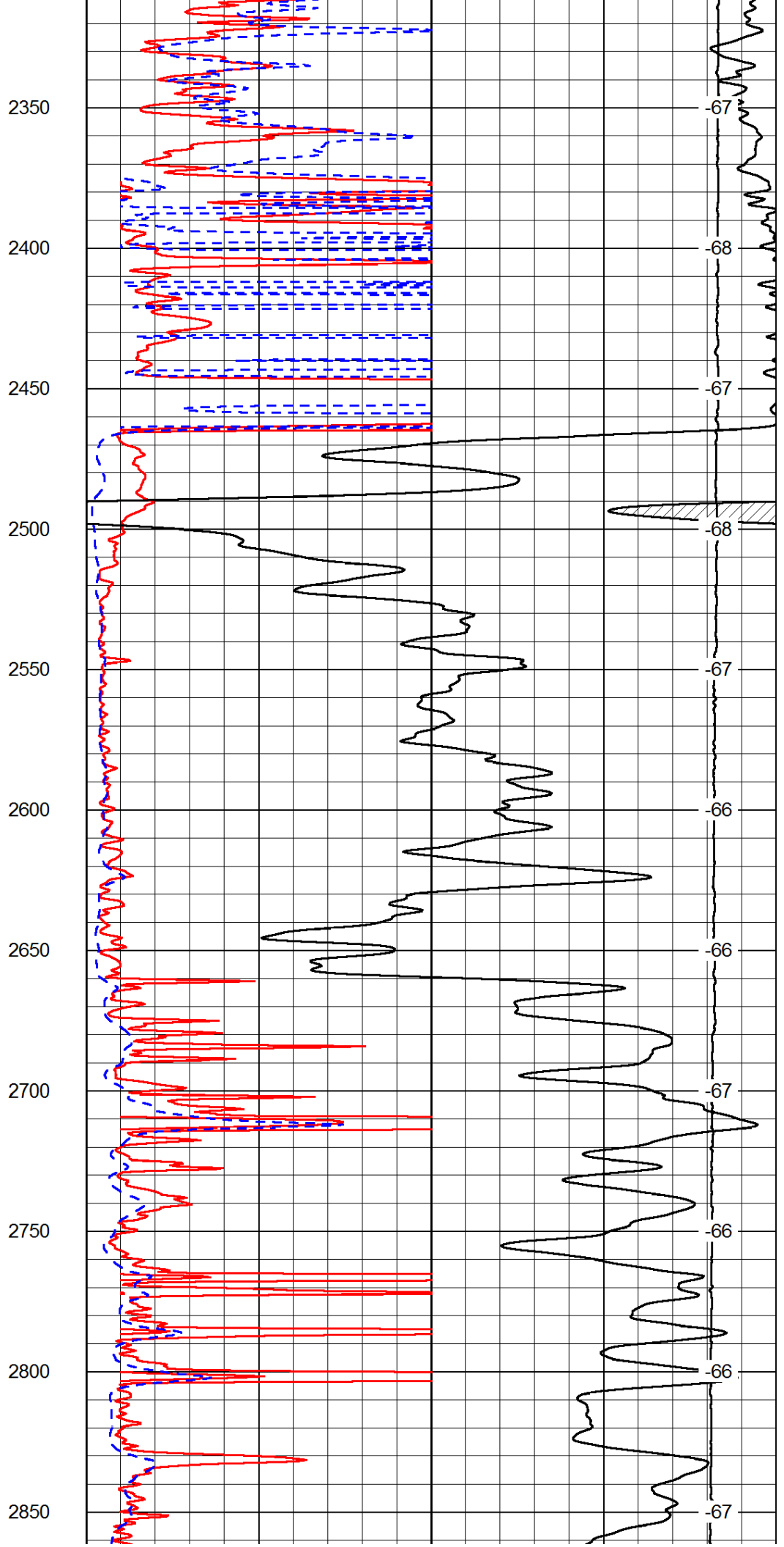
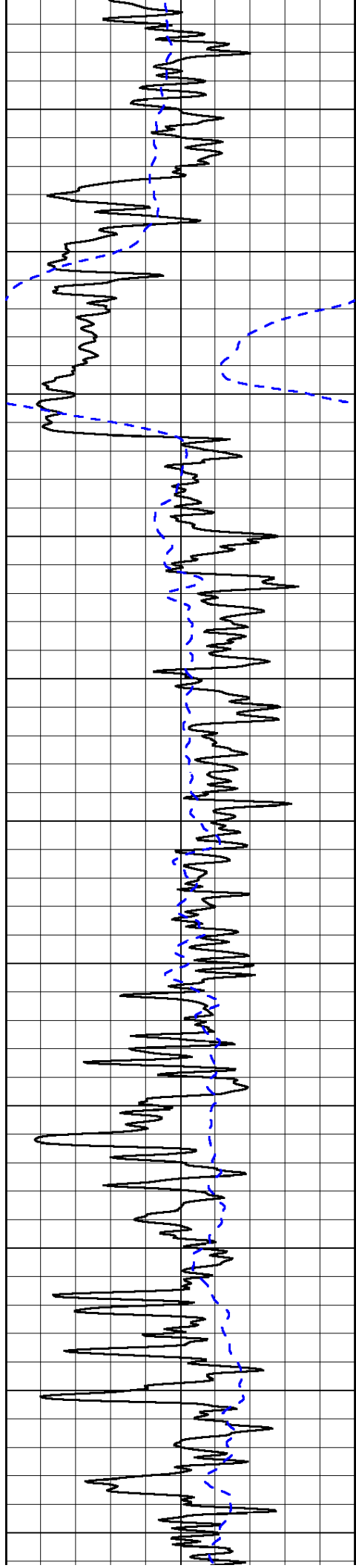
50	Shallow Resistivity	500
50	Deep Resistivity	500

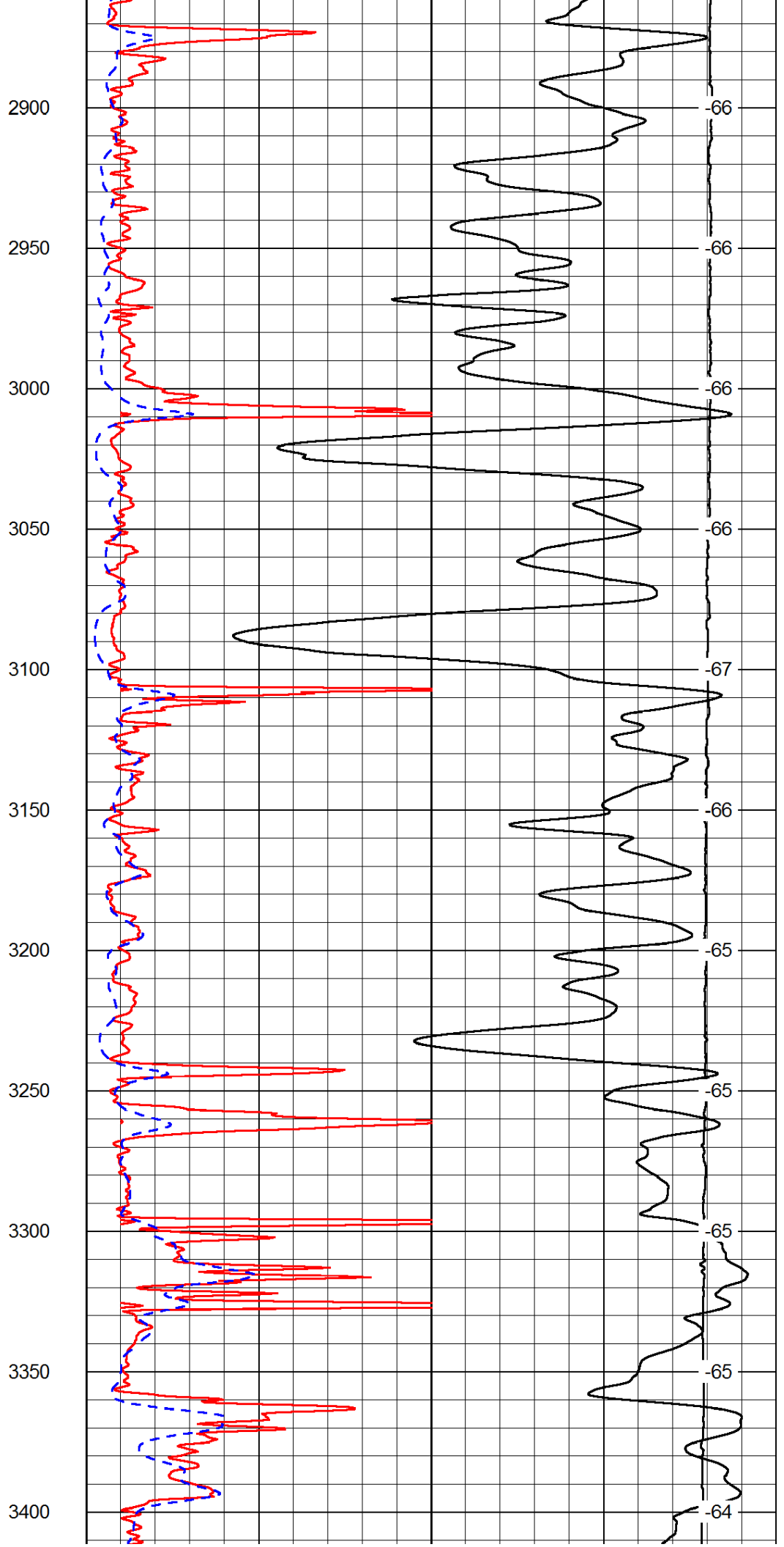
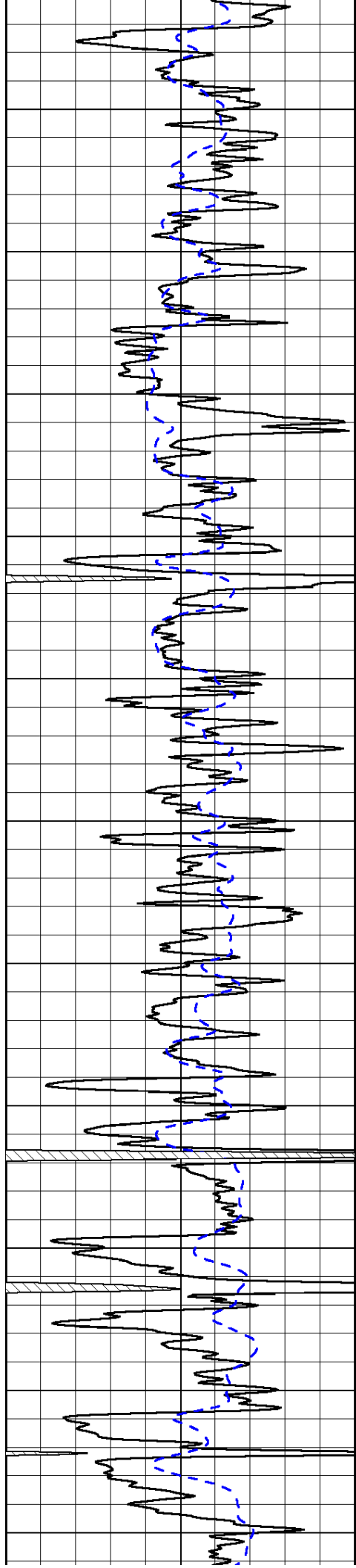


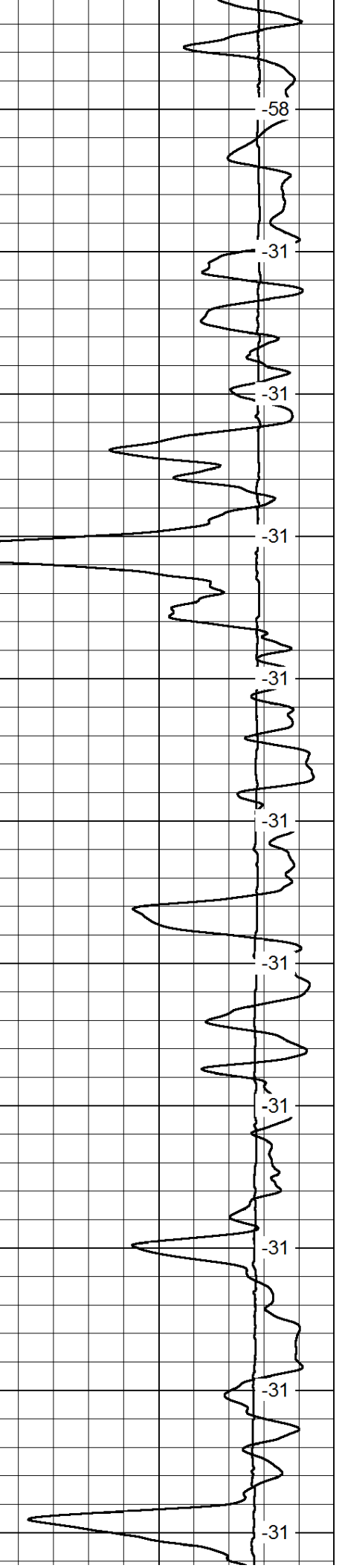
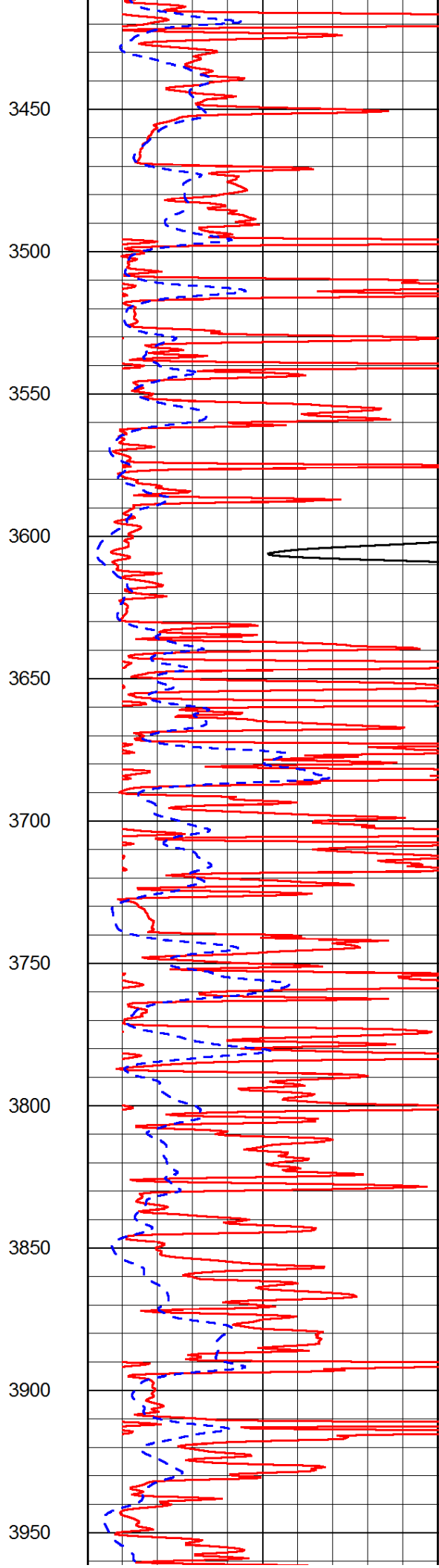
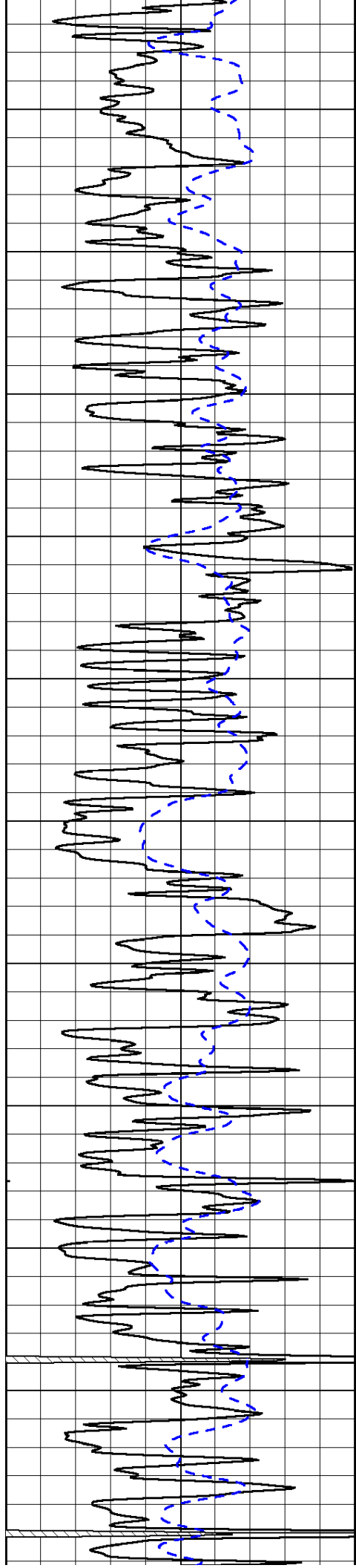


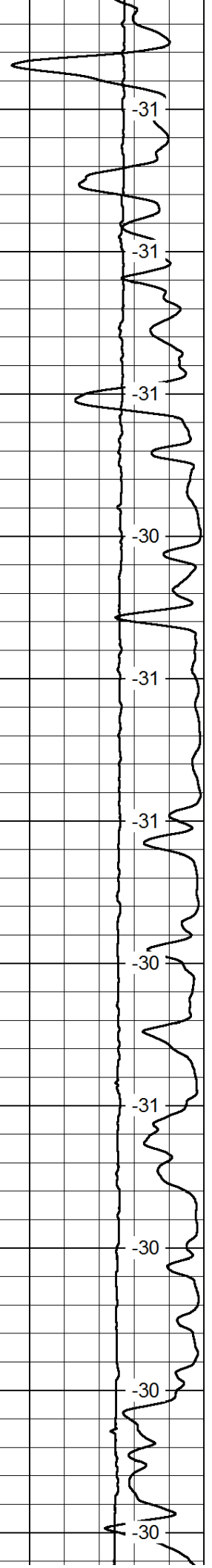
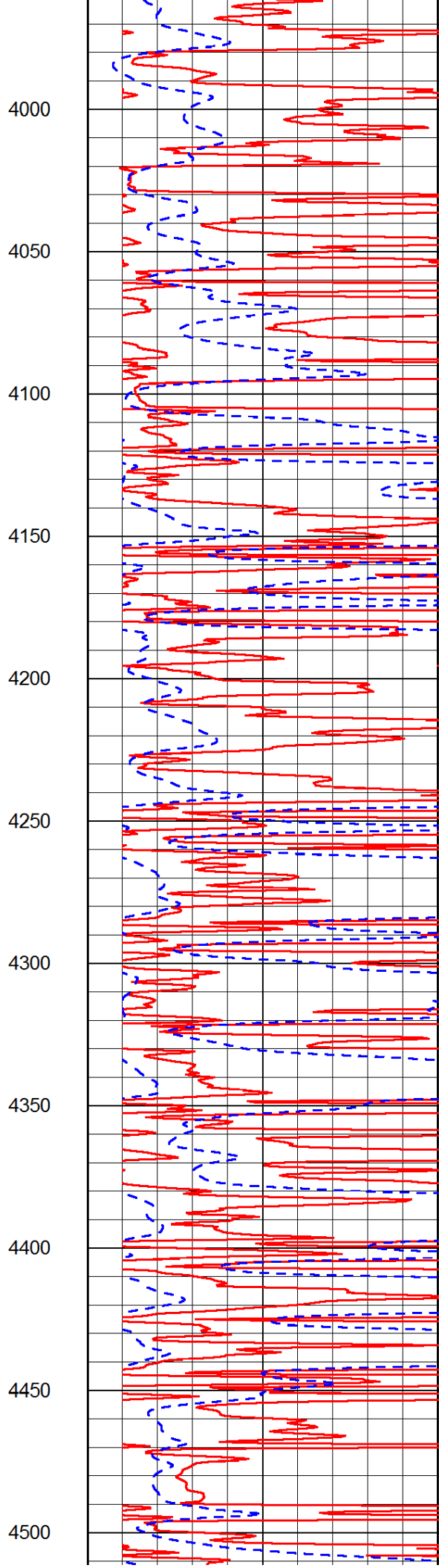
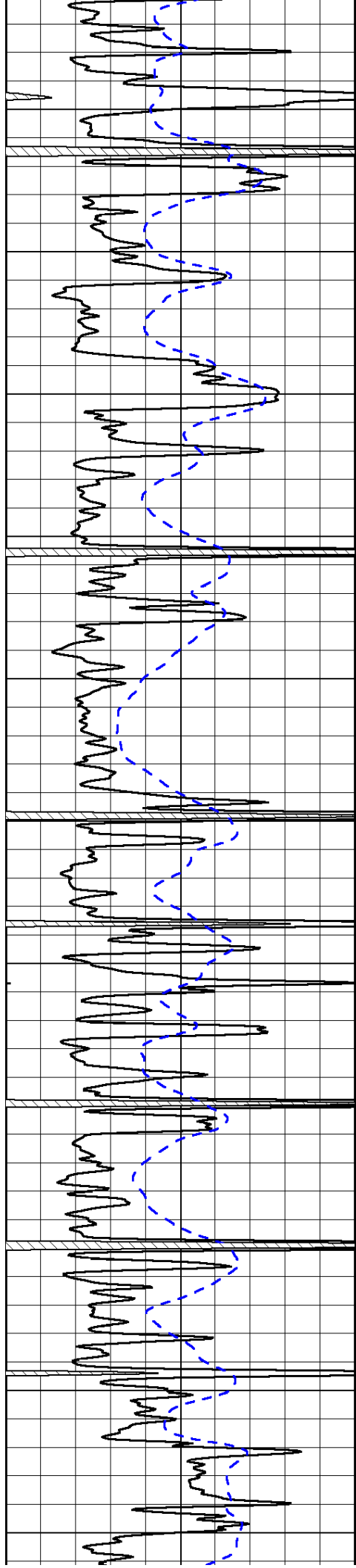


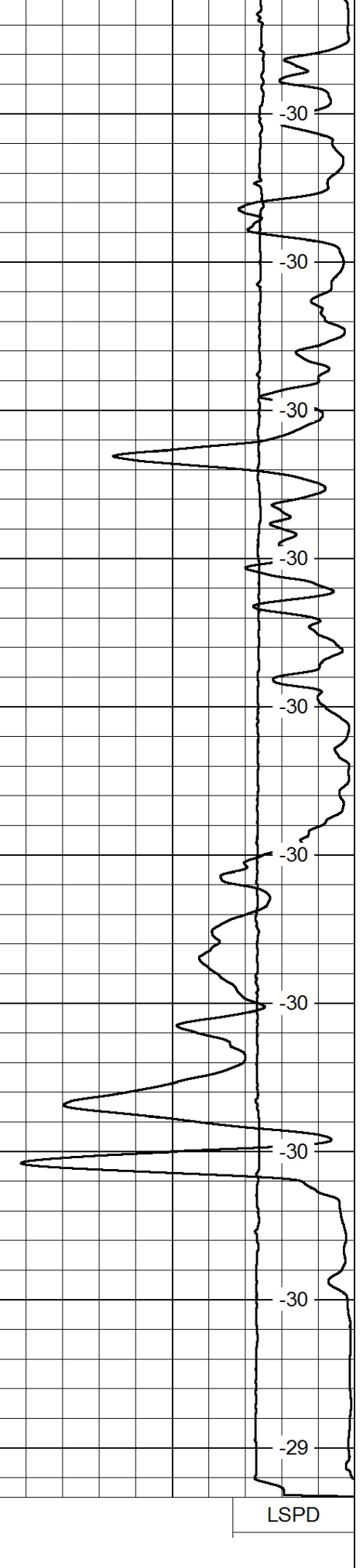
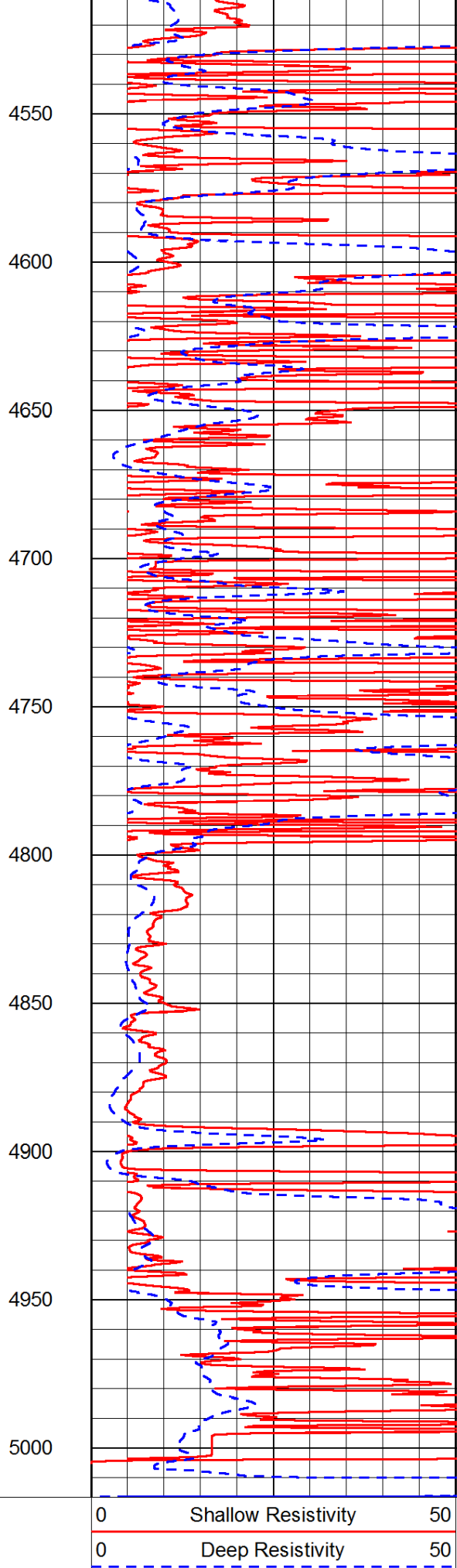
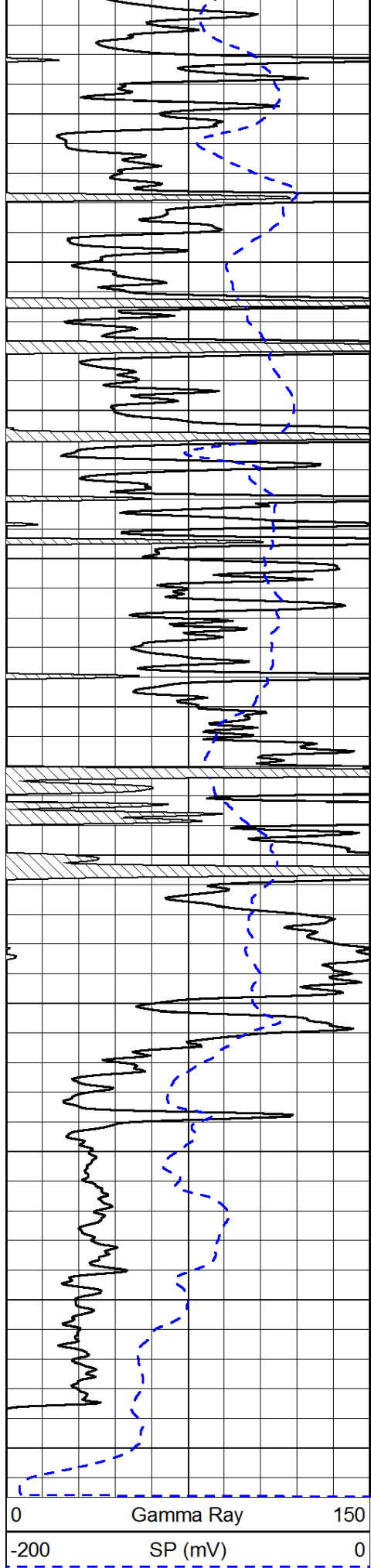












0 Gamma Ray 150
 -200 SP (mV) 0

0 Shallow Resistivity 50
 0 Deep Resistivity 50

LSPD

1000 Conductivity 0
 15000 Line Tension 0

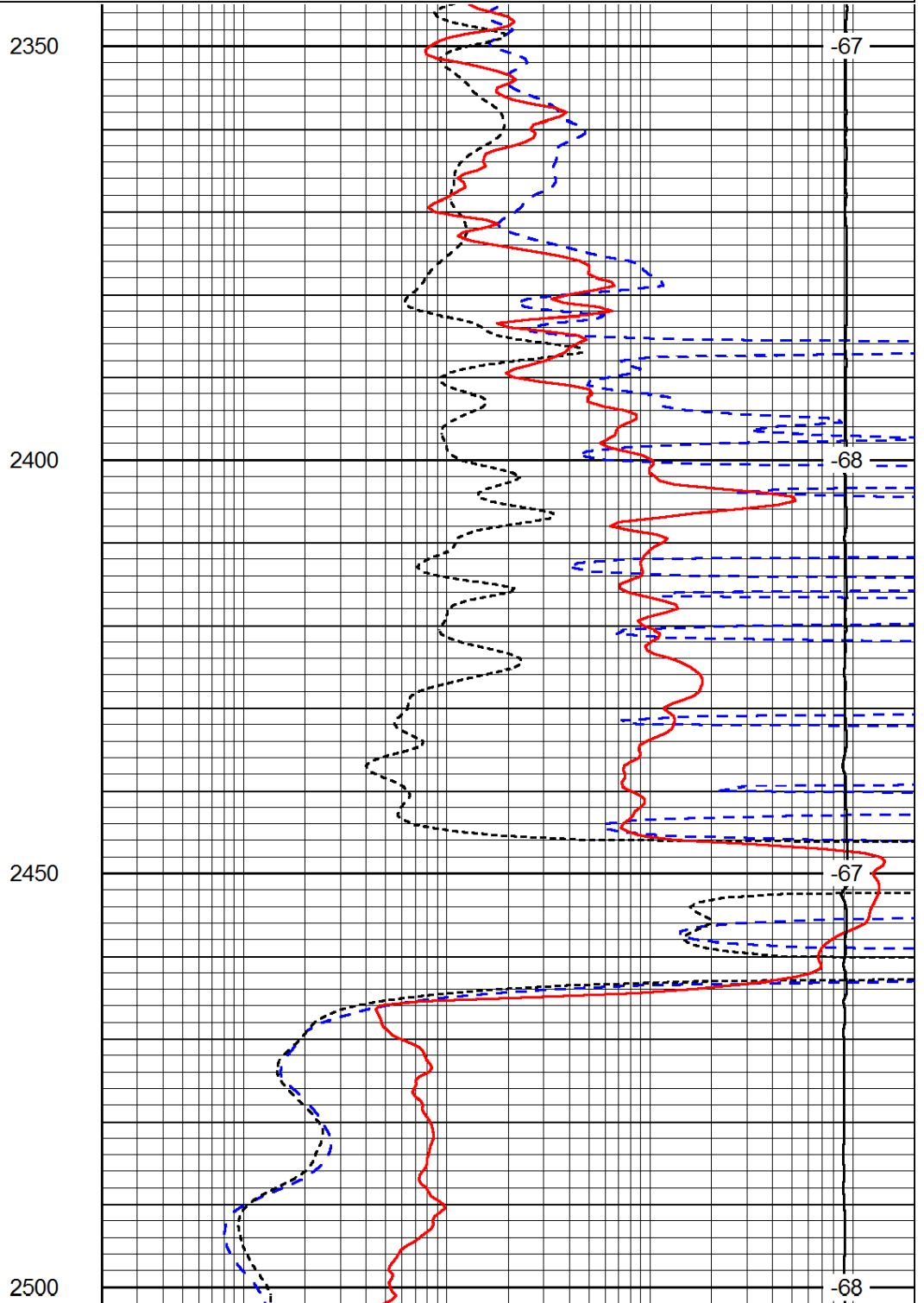
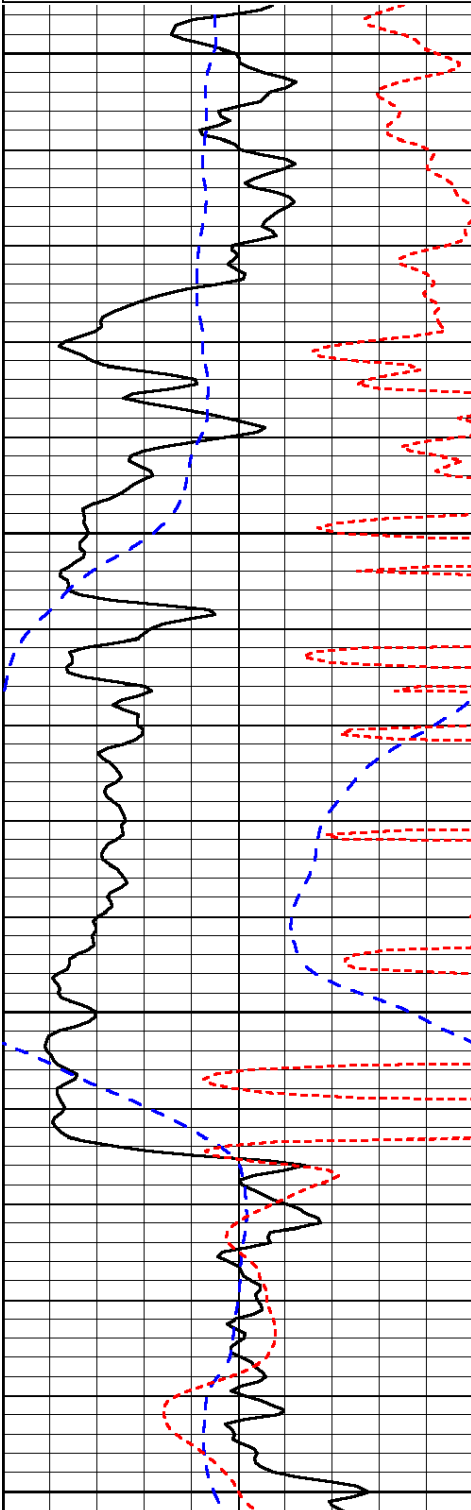
50	Shallow Resistivity	500
50	Deep Resistivity	500

Database File: c:\warrior\data\landmark_decker #1-17\landhd.db
 Dataset Pathname: DIL/lanstk
 Presentation Format: dil
 Dataset Creation: Wed Mar 20 06:54:56 2013
 Charted by: Depth in Feet scaled 1:240

0	Gamma Ray	150
-200	SP (mV)	0
-160	RxoRt	40

0.2	Deep Resistivity	2000
0.2	Medium Resistivity	2000
0.2	Shallow Resistivity	2000
15000	Line Tension	0

LSPD



0	Gamma Ray	150
-200	SP (mV)	0
-160	RxoRt	40

0.2	Deep Resistivity	2000
0.2	Medium Resistivity	2000
0.2	Shallow Resistivity	2000
15000	Line Tension	0

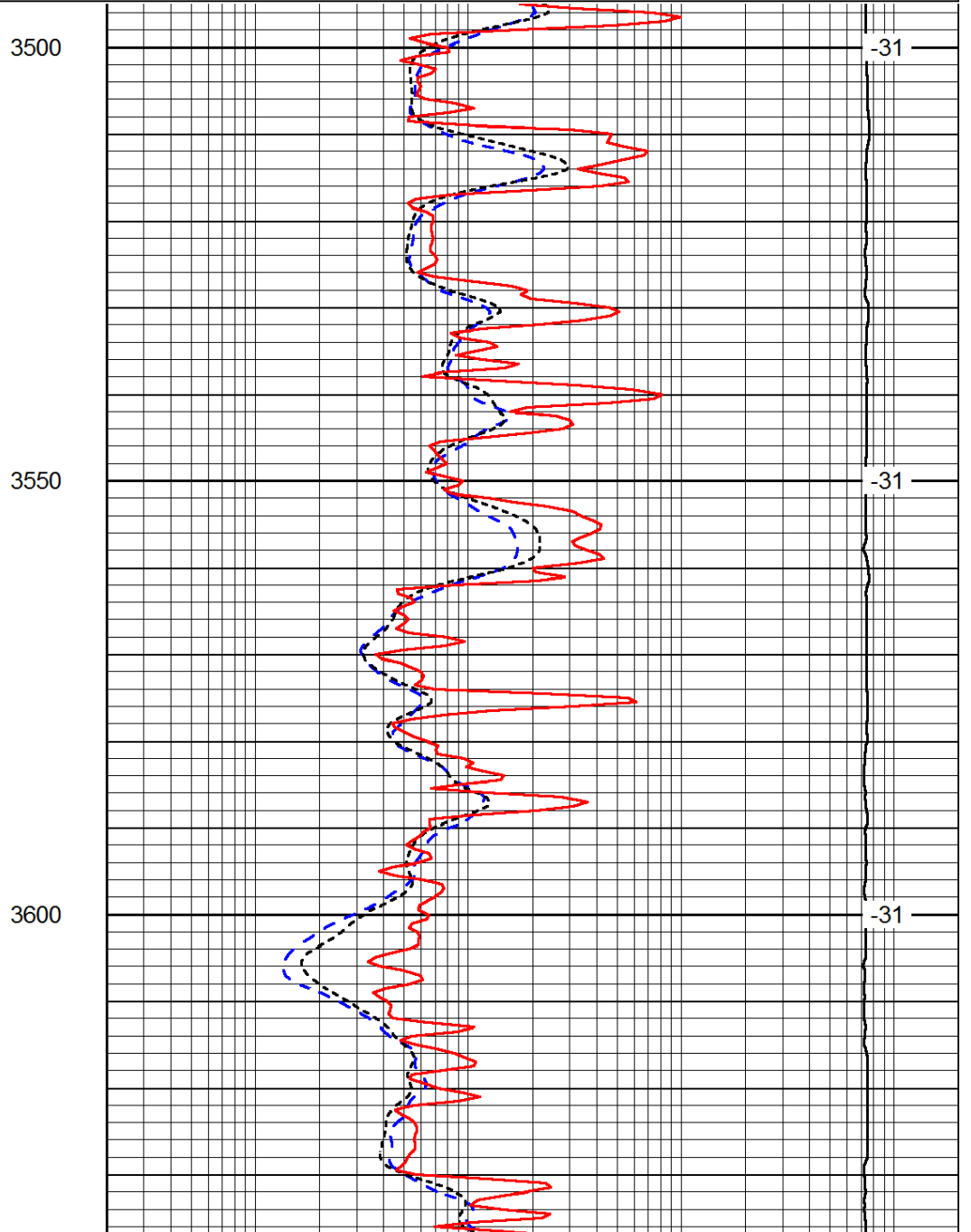
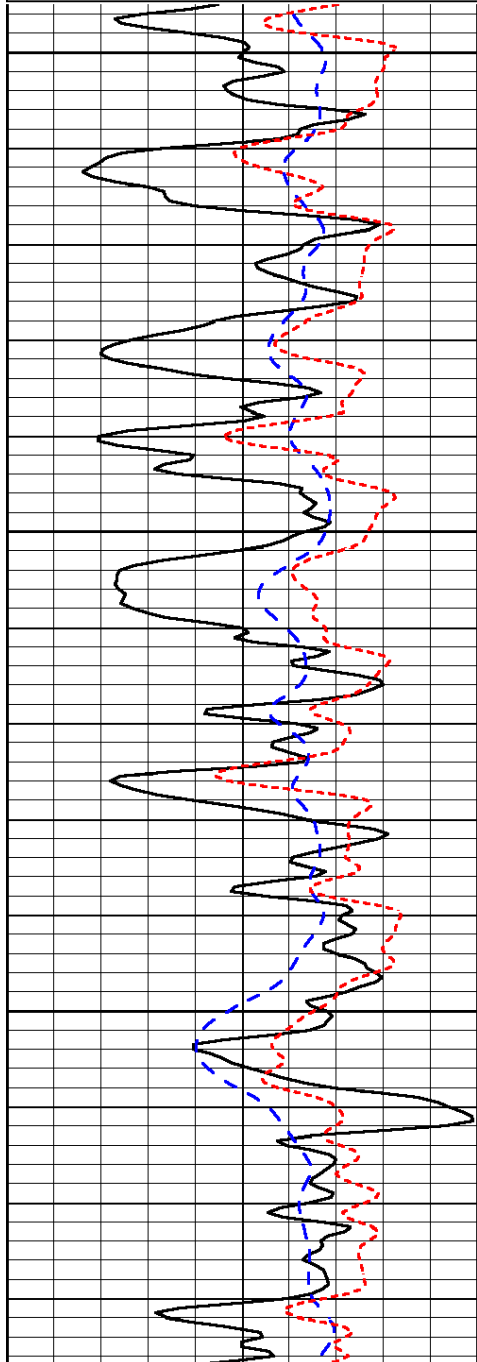
LSPD

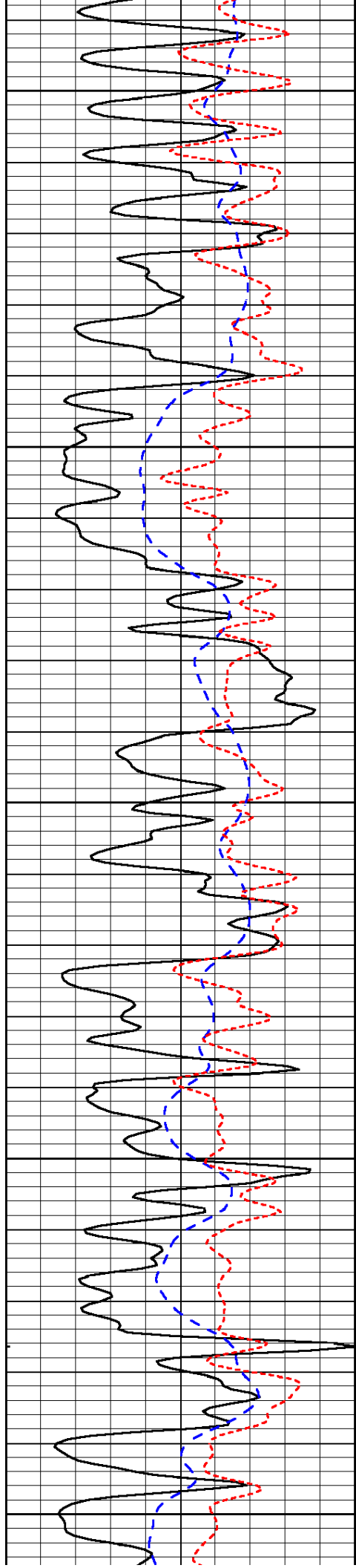
Database File: c:\warrior\data\landmark_decker #1-17\landhd.db
 Dataset Pathname: DIL/lanstk
 Presentation Format: dil
 Dataset Creation: Wed Mar 20 06:54:56 2013
 Charted by: Depth in Feet scaled 1:240

0	Gamma Ray	150
-200	SP (mV)	0
-160	RxoRt	40

0.2	Deep Resistivity	2000
0.2	Medium Resistivity	2000
0.2	Shallow Resistivity	2000
15000	Line Tension	0

LSPD





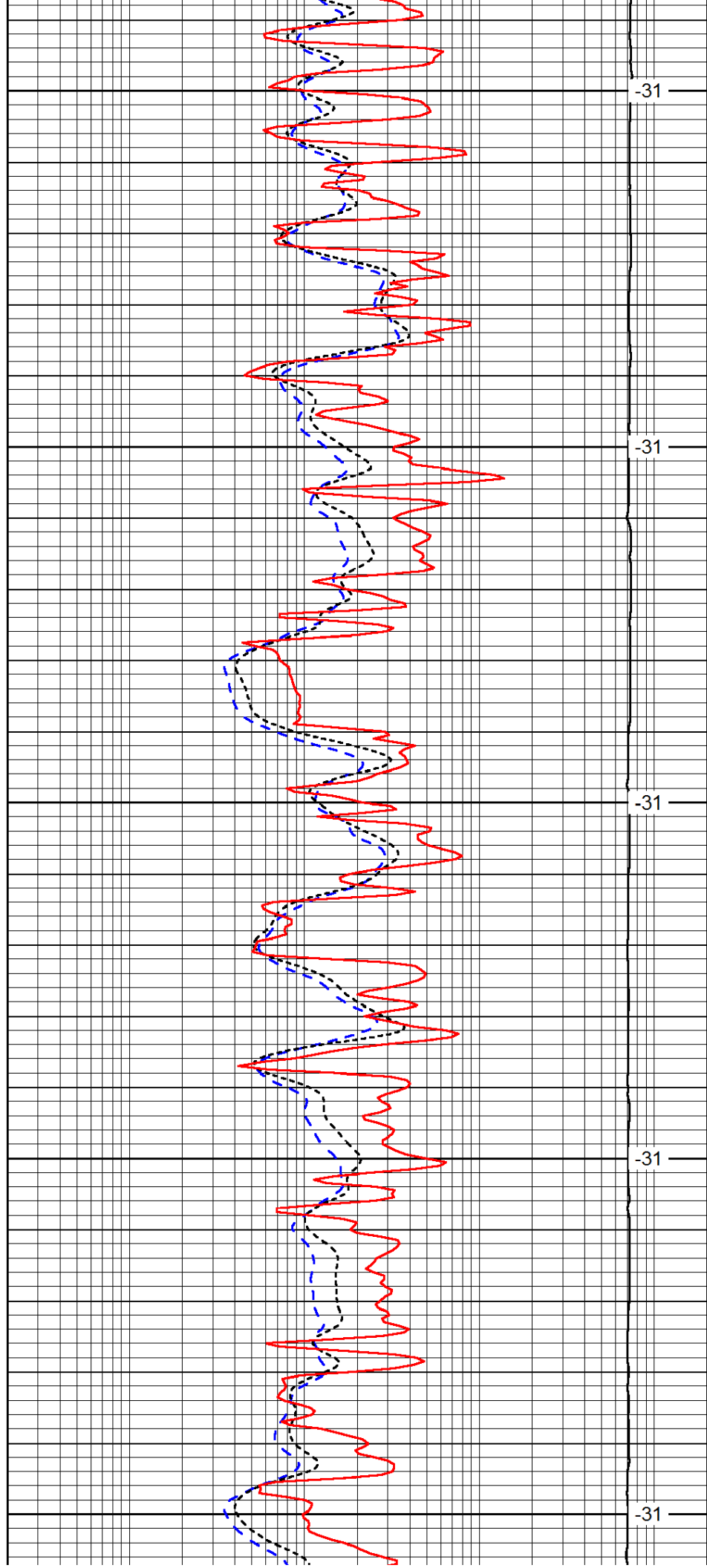
3650

3700

3750

3800

3850



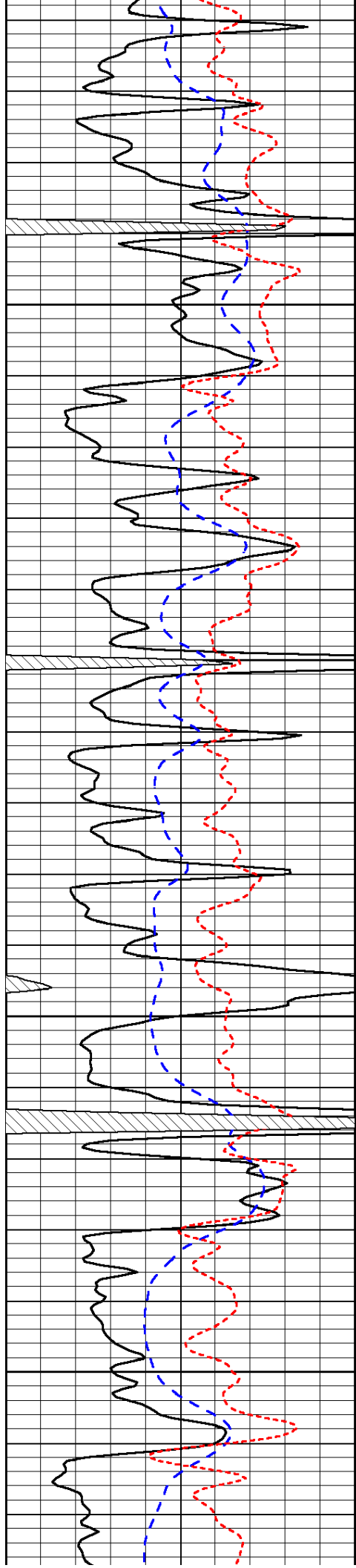
-31

-31

-31

-31

-31

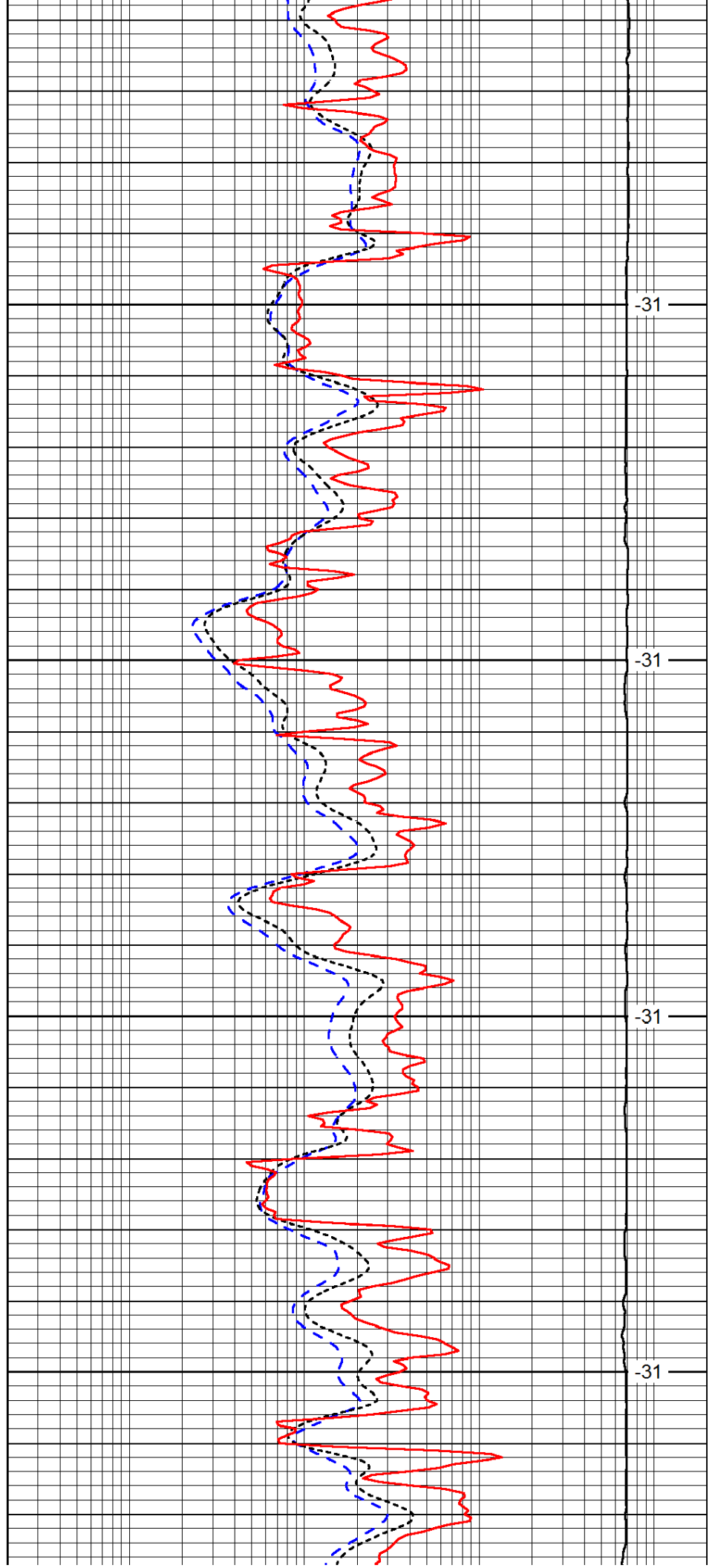


3900

3950

4000

4050

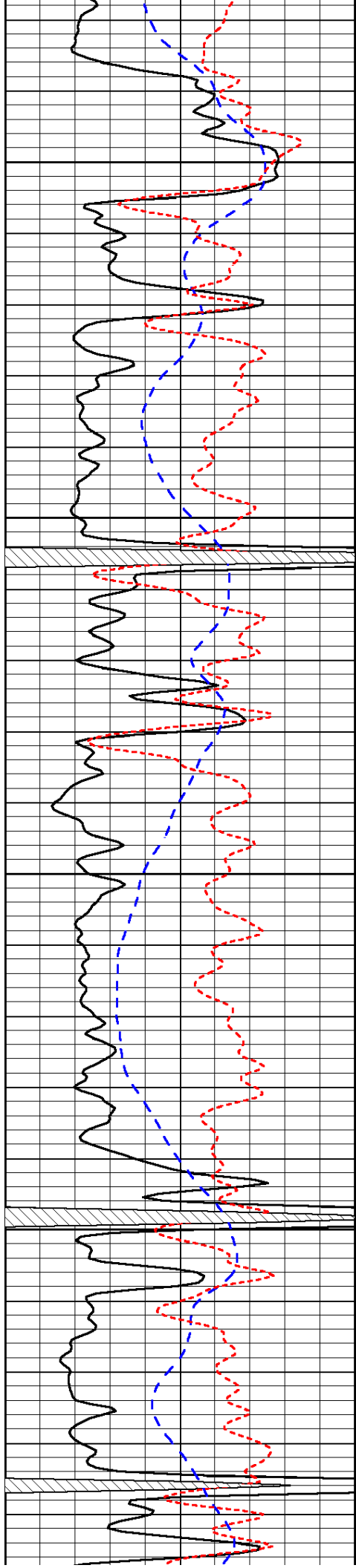


-31

-31

-31

-31

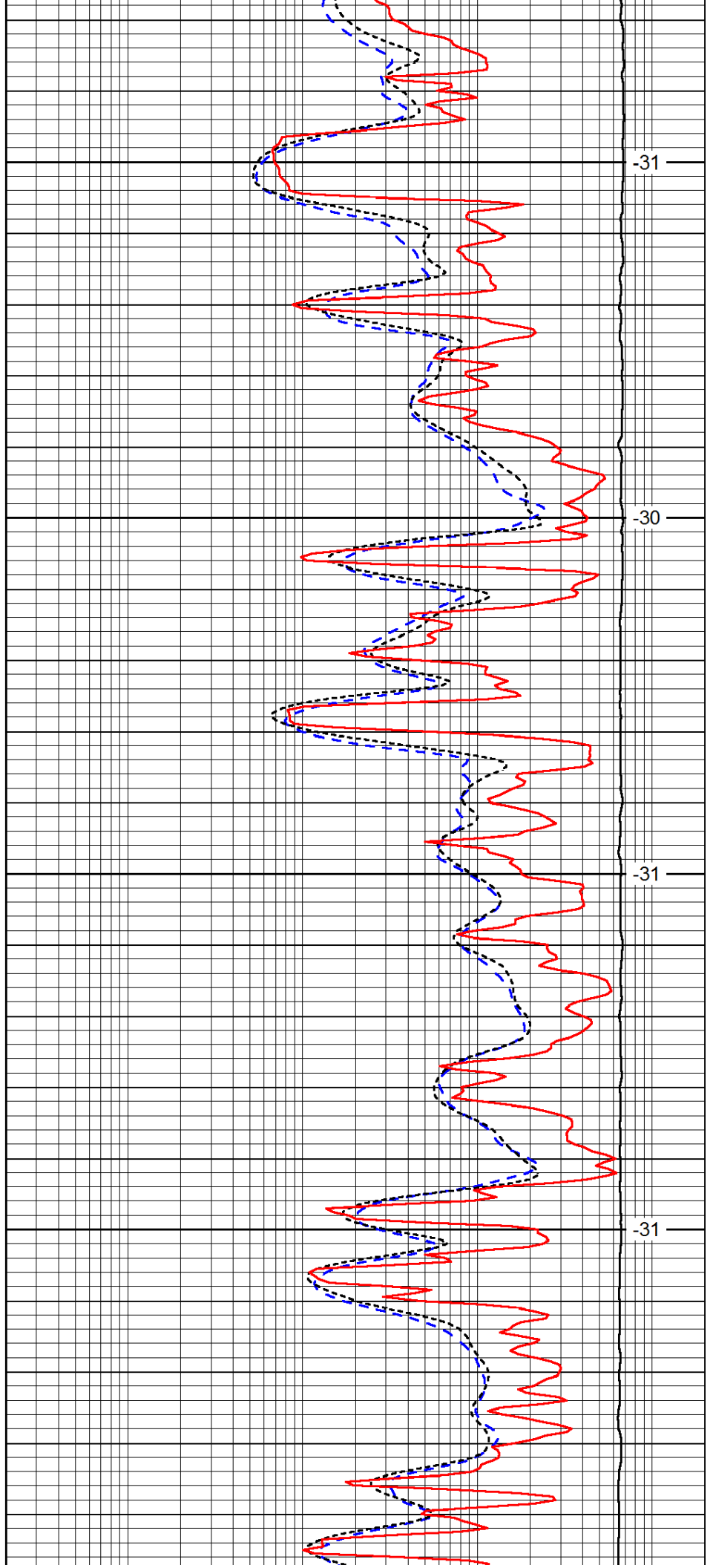


4100

4150

4200

4250

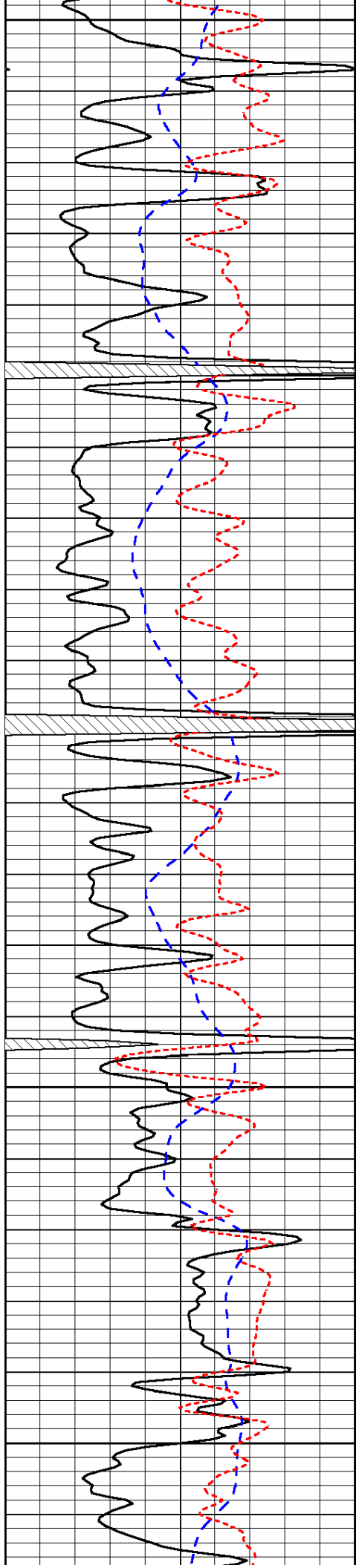


-31

-30

-31

-31



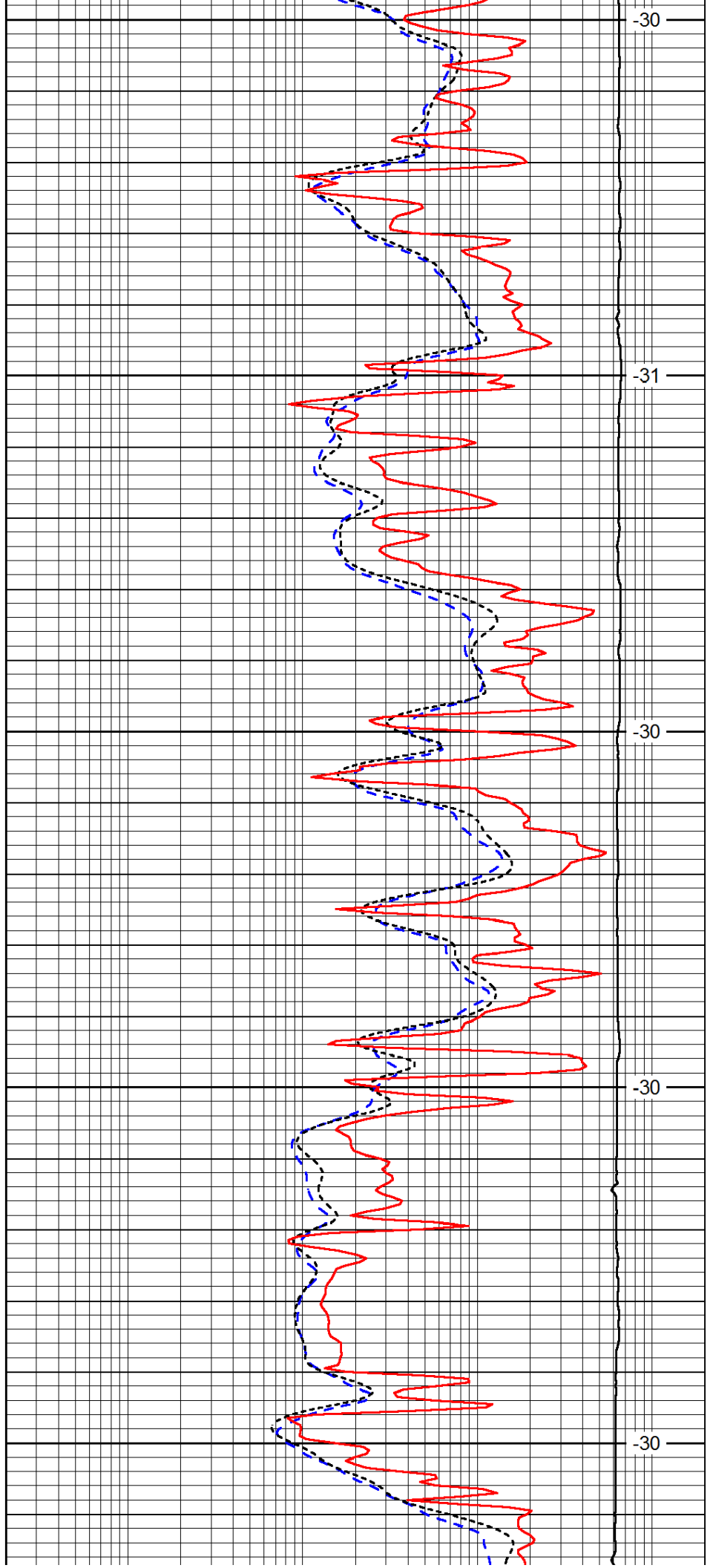
4300

4350

4400

4450

4500



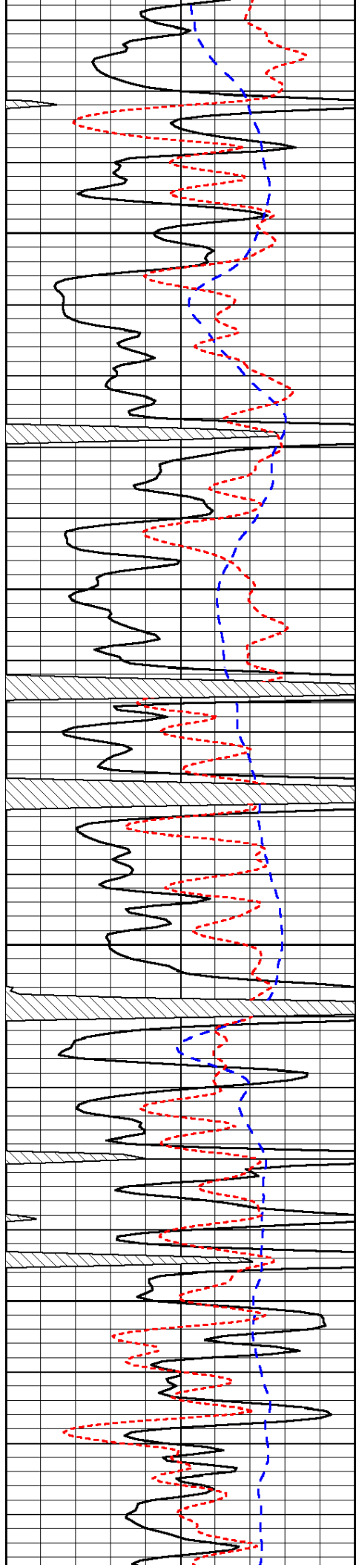
-30

-31

-30

-30

-30

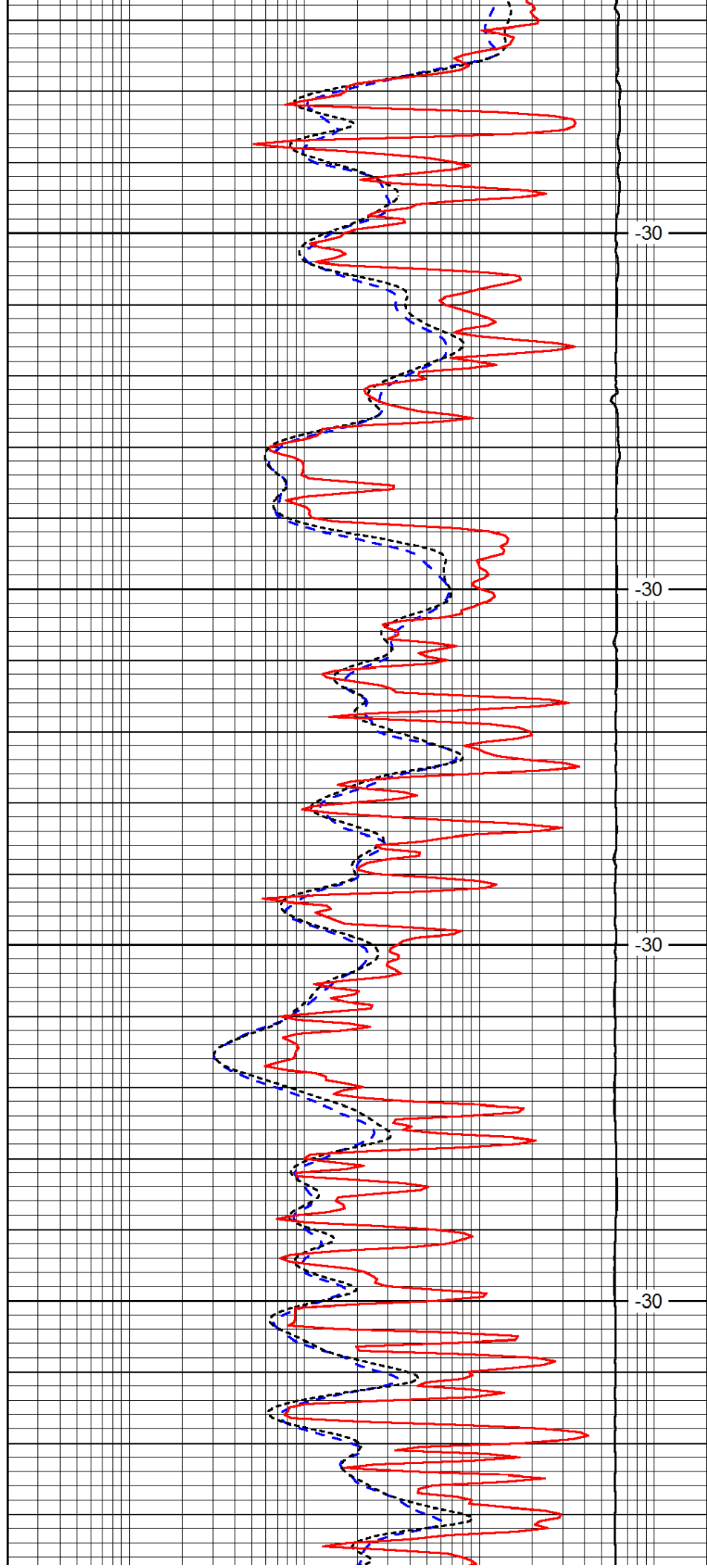


4550

4600

4650

4700

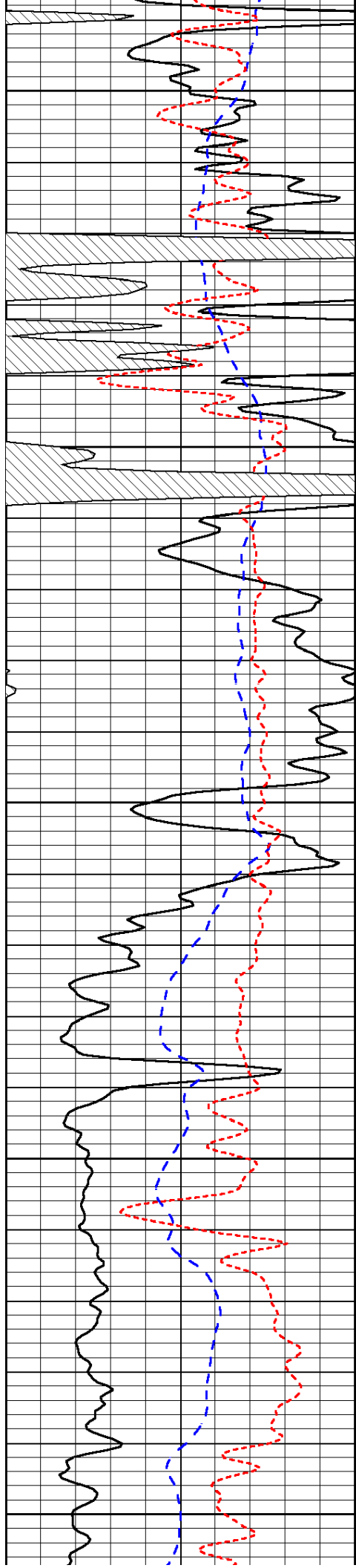


-30

-30

-30

-30



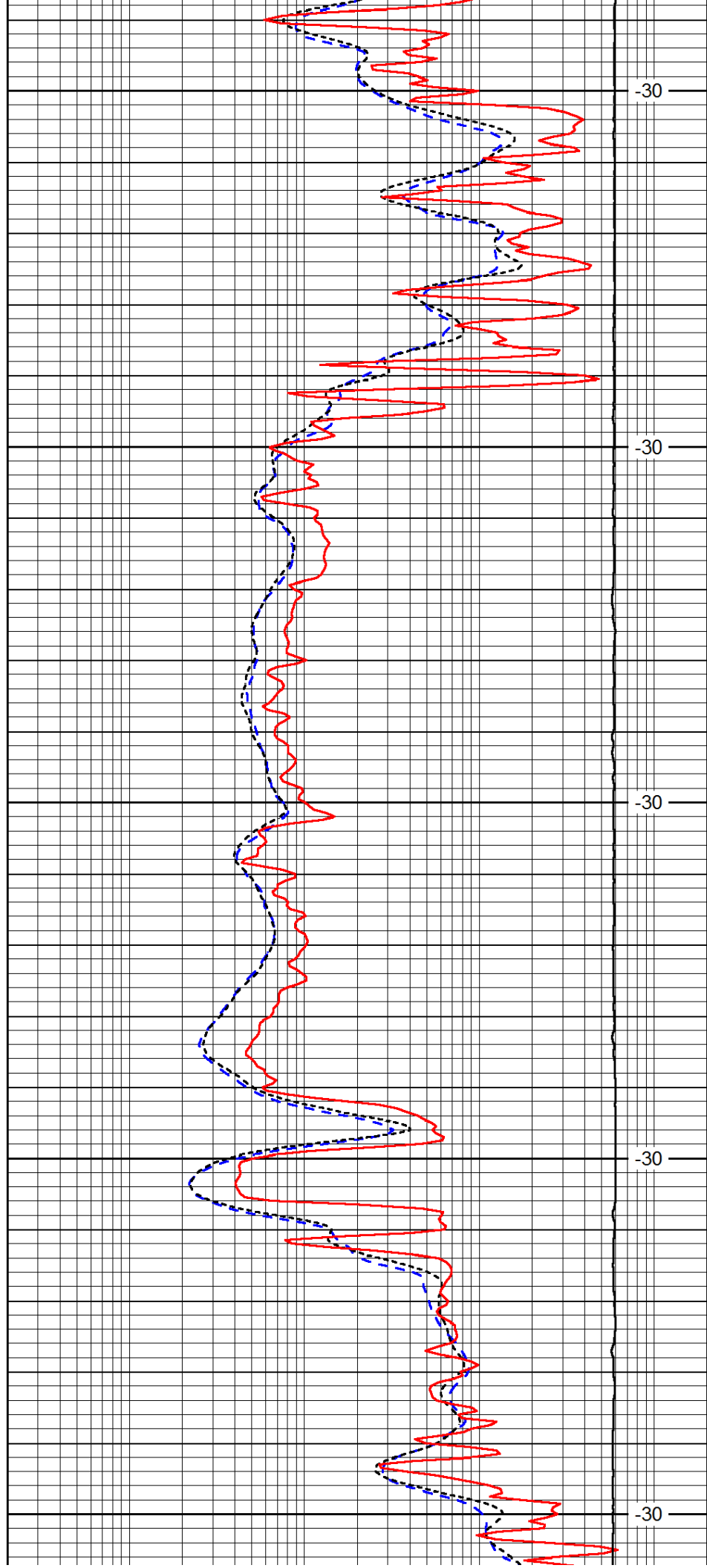
4750

4800

4850

4900

4950



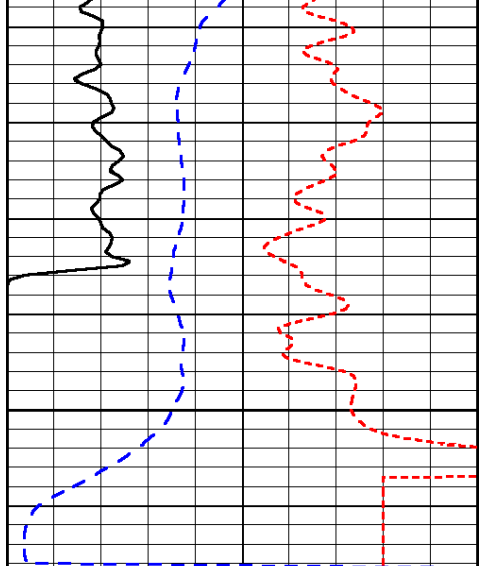
-30

-30

-30

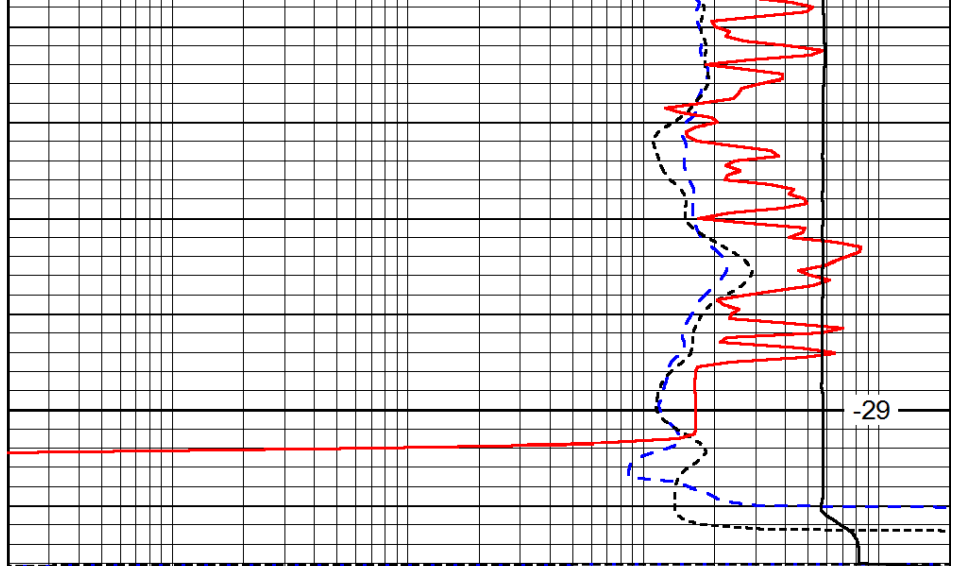
-30

-30



0	Gamma Ray	150
-200	SP (mV)	0
-160	RxoRt	40

5000



0.2	Deep Resistivity	2000
0.2	Medium Resistivity	2000
0.2	Shallow Resistivity	2000
15000	Line Tension	0

LSPD