



Pioneer Energy Services

Dual Compensated Porosity Log

15-171-20,935-00-00

API No.

Company **Landmark Resources, Inc.**
 Well **Decker #1-17**
 Field **Wildcat**
 County **Scott**

State **Kansas**

Location
 2525' FNL & 2100' FEL
 Sec: 17 Twp: 17 S Rge: 34 W

Other Services
 DIL
 MEL/BHCS

Permanent Datum Ground Level Elevation 3139
 Log Measured From Kelly Bushing 11 Ft. Above Perm. Datum
 Drilling Measured From Kelly Bushing

Elevation
 K.B. 3150
 D.F. 3139
 G.L. 3139

Date	3/20/2013	
Run Number	One	
Type Log	CNL / CDL	
Depth Driller	5010	
Depth Logger	5011	
Bottom Logged Interval	4990	
Top Logged Interval	3500	
Type Fluid In Hole	Chemical	
Salinity, PPM CL	9000	
Density Level	9.5	
Level	Full	
Max. Rec. Temp. F	126	
Operating Rig Time	6 Hours	
Equipment -- Location	17 Hays	
Recorded By	D. Martin	
Witnessed By	Wes Hansen	

Borehole Record

Run No.	Bit	From	To	Size	Wgt.	From	To
1	12.25	00	236	8.625	24#	00	236
2	7.875	236	5010				

Casing Record

<<< Fold Here >>>

All interpretations are opinions based on inferences from electrical or other measurements and we cannot and do not guarantee the accuracy or correctness of any interpretation, and we shall not, except in the case of gross or willful negligence on our part, be liable or responsible for any loss, costs, damages, or expenses incurred or sustained by anyone resulting from any interpretation made by any of our officers, agents or employees. These interpretations are also subject to our general terms and conditions set out in our current Price Schedule.

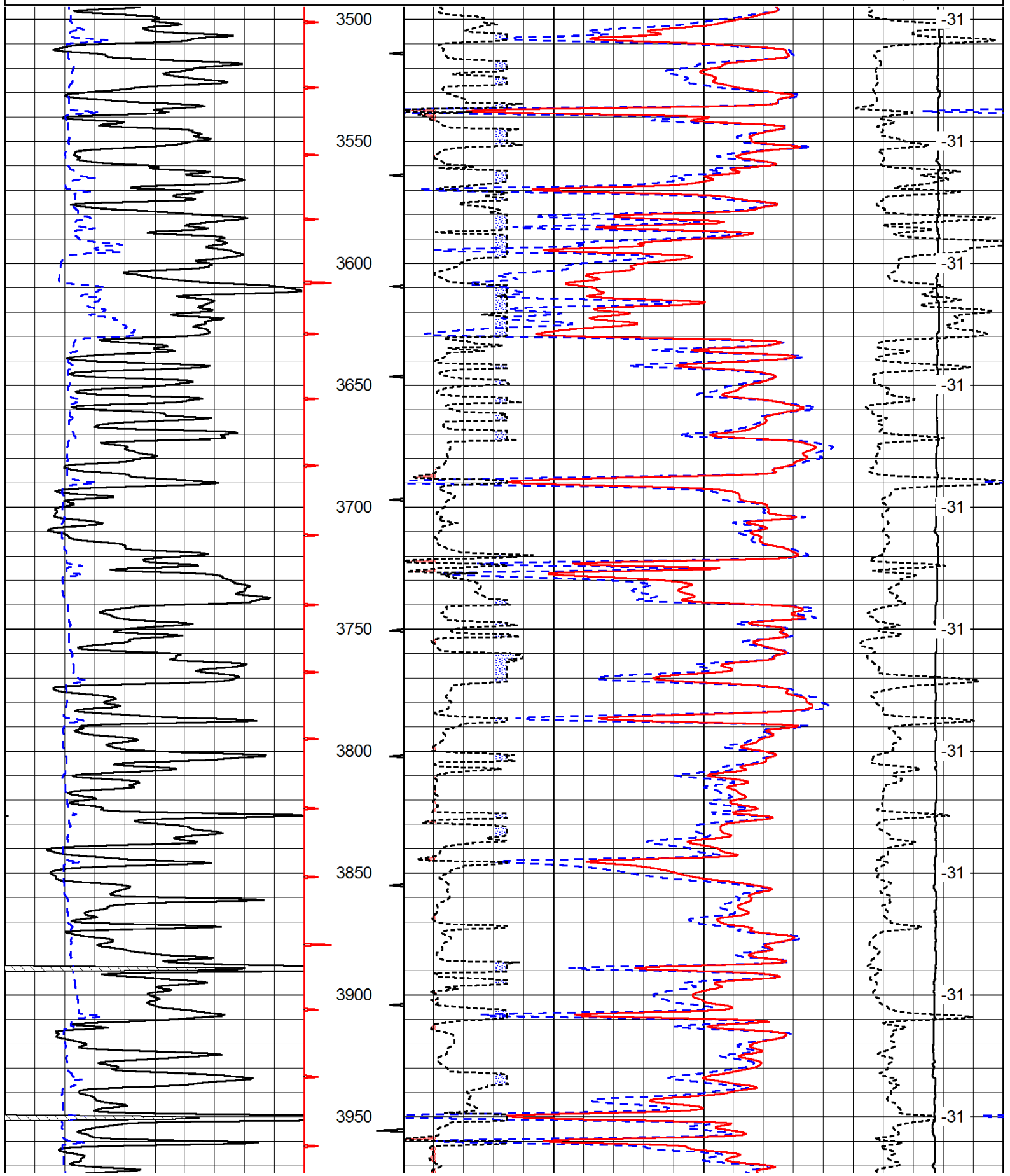
Comments

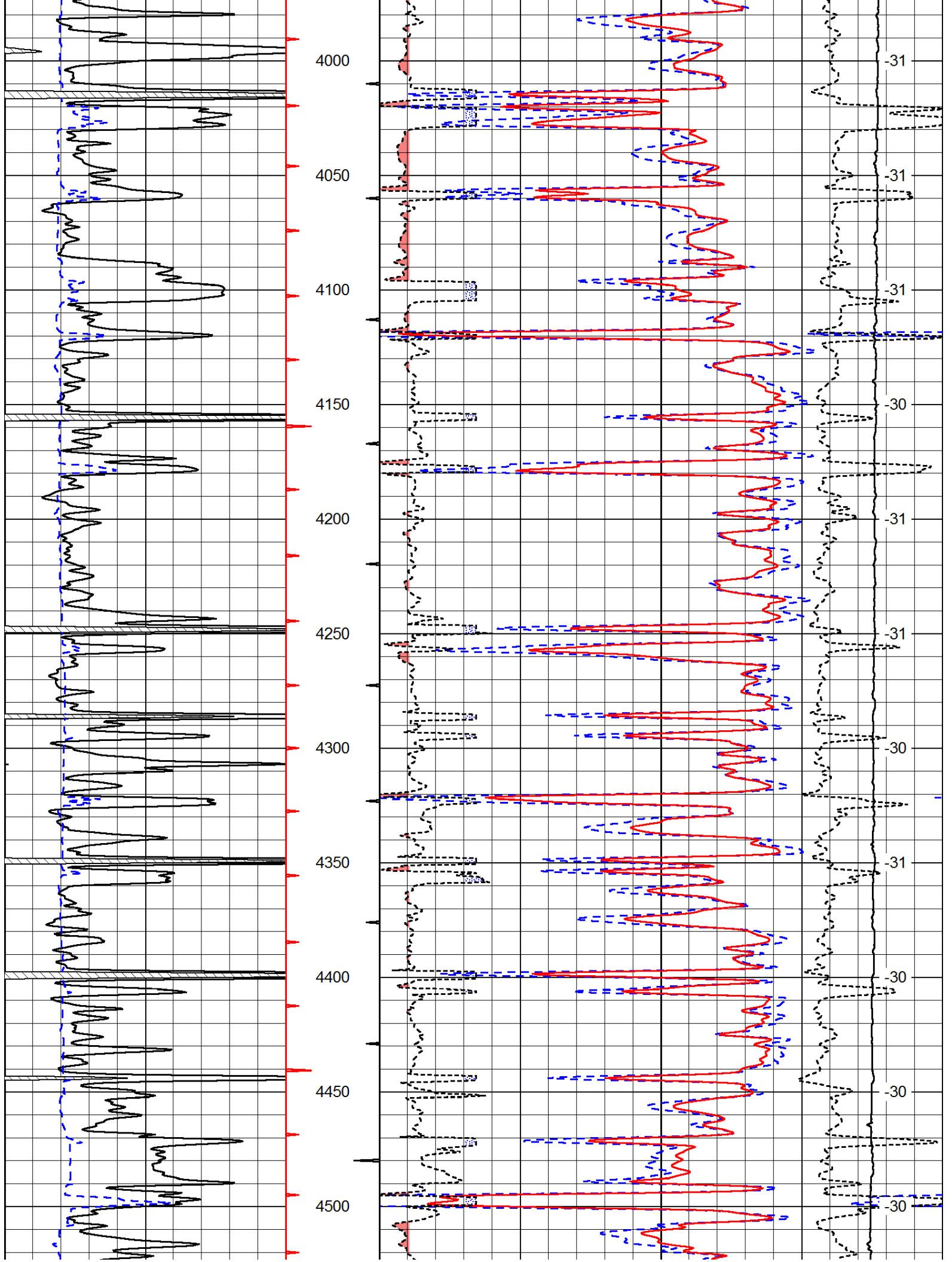
Thank you for using Pioneer Energy Services
 www.pioneer.com
 785 625 3858
 Scott City, KS
 8 W, 1 N, 1 W, 5 1/2 N, 1 W, W Into

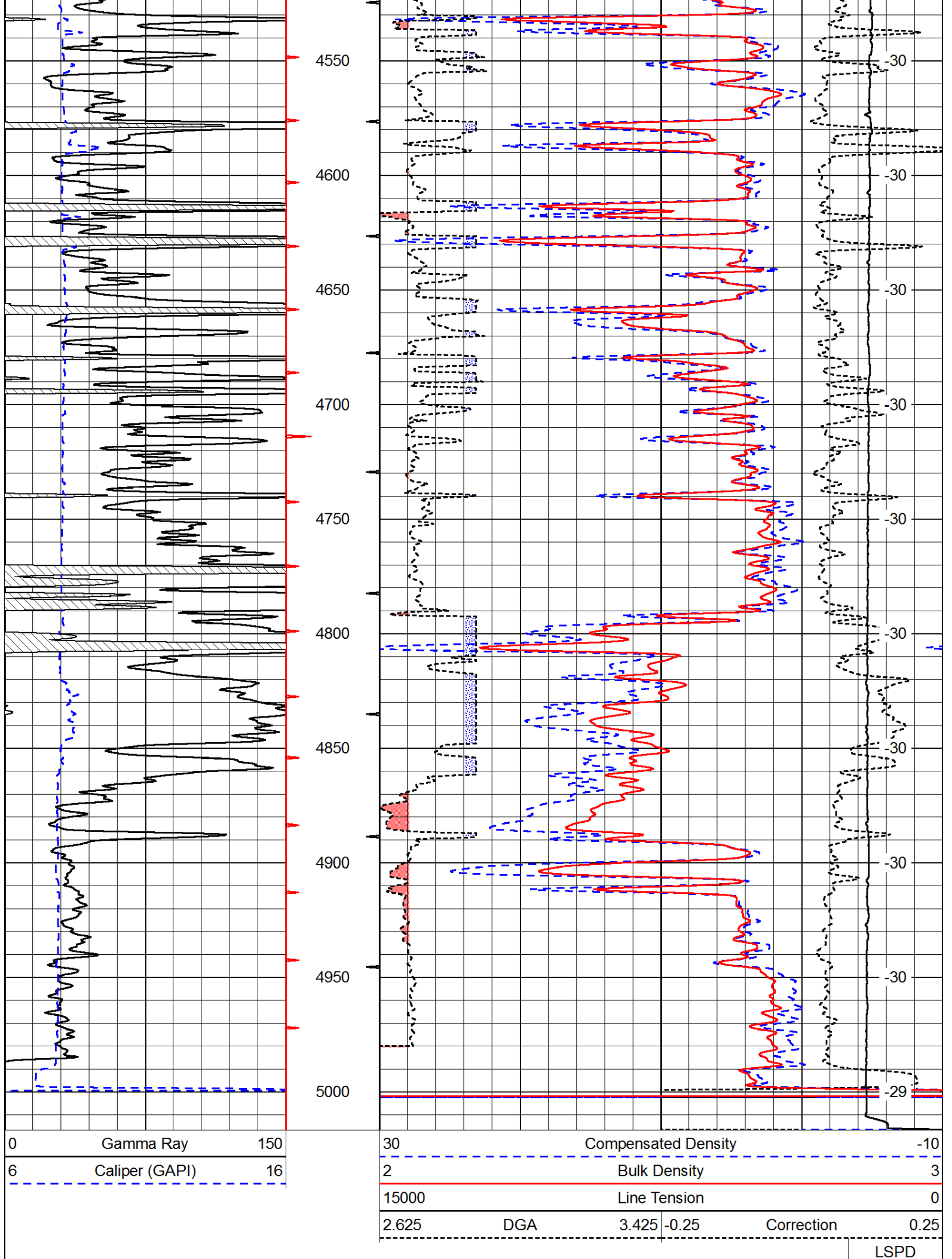
Database File: c:\warrior\data\landmark_decker #1-17\landhd.db
 Dataset Pathname: DIL\lanstk
 Presentation Format: cdl
 Dataset Creation: Wed Mar 20 06:54:56 2013
 Charted by: Depth in Feet scaled 1:600

0	Gamma Ray	150
6	Caliper (GAPI)	16

30	Compensated Density		-10
2	Bulk Density		3
15000	Line Tension		0
2.625	DGA	3.425	-0.25
			Correction
			0.25
LSPD			







Database File: c:\warrior\data\landmark_decker #1-17\landhd.db
 Dataset Pathname: DIL\lanstk
 Presentation Format: cndlspec
 Dataset Creation: Wed Mar 20 06:54:56 2013
 Charted by: Depth in Feet scaled 1:240

0	Gamma Ray	150	30	Compensated Neutron (Limestone)		-10
6	Caliper (GAPI)	16	30	Compensated Density (Limestone)		-10
			2.625	DGA	3.425 -0.25	Correction 0.25
			15000	Line Tension		0
LSPD						

