



Pioneer Energy Services

Microresistivity Log

15-171-20,935-00-00

API No.

Company **Landmark Resources, Inc.**

Well **Decker #1-17**

Field **Wildcat**

County **Scott** State

Kansas

Location

2525' FNL & 2100' FEL

Other Services
CNL/CDL
DIL/BHCS

Sec: **17** Twp: **17 S** Rge: **34 W**

Permanent Datum **Ground Level** Elevation **3139**
Log Measured From **Kelly Bushing** **11 Ft. Above Perm. Datum**
Drilling Measured From **Kelly Bushing**

Elevation
K.B. 3150
D.F. 3139
G.L. 3139

Date **3/20/2013**

Run Number **Two**

Depth Driller **5010**

Depth Logger **5011**

Bottom Logged Interval **5010**

Top Log Interval **3500**

Casing Driller **8.625 @ 236**

Casing Logger **231**

Bit Size **7.875**

Type Fluid in Hole **Chemical**

Salinity,ppm CL **9000**

Density / Viscosity **9.5 48**

pH / Fluid Loss **10.0 8.0**

Source of Sample **Flowline**

Rm @ Meas. Temp **.50 @ 44**

Rmf @ Meas. Temp **.38 @ 44**

Rmc @ Meas. Temp **.68 @ 44**

Source of Rmf / Rmc **Charts**

Rm @ BHT **.17 @ 126**

Operating Rig Time **6 Hours**

Max Rec. Temp. F **126**

Equipment Number **17**

Location **Hays**

Recorded By **D. Martin**

Witnessed By **Wes Hansen**

<<< Fold Here >>>

All interpretations are opinions based on inferences from electrical or other measurements and we cannot and do not guarantee the accuracy or correctness of any interpretation, and we shall not, except in the case of gross or willful negligence on our part, be liable or responsible for any loss, costs, damages, or expenses incurred or sustained by anyone resulting from any interpretation made by any of our officers, agents or employees. These interpretations are also subject to our general terms and conditions set out in our current Price Schedule.

Comments

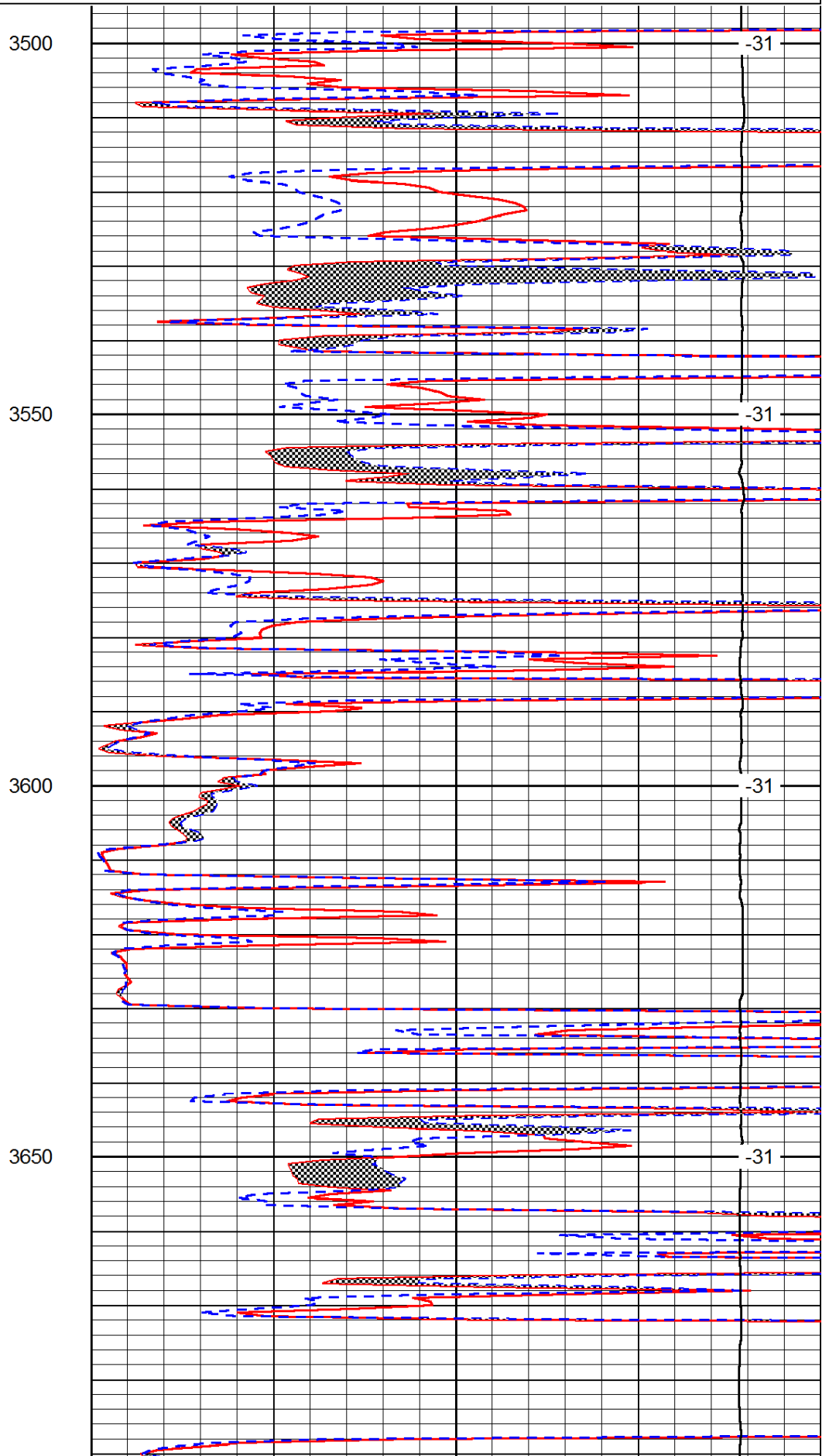
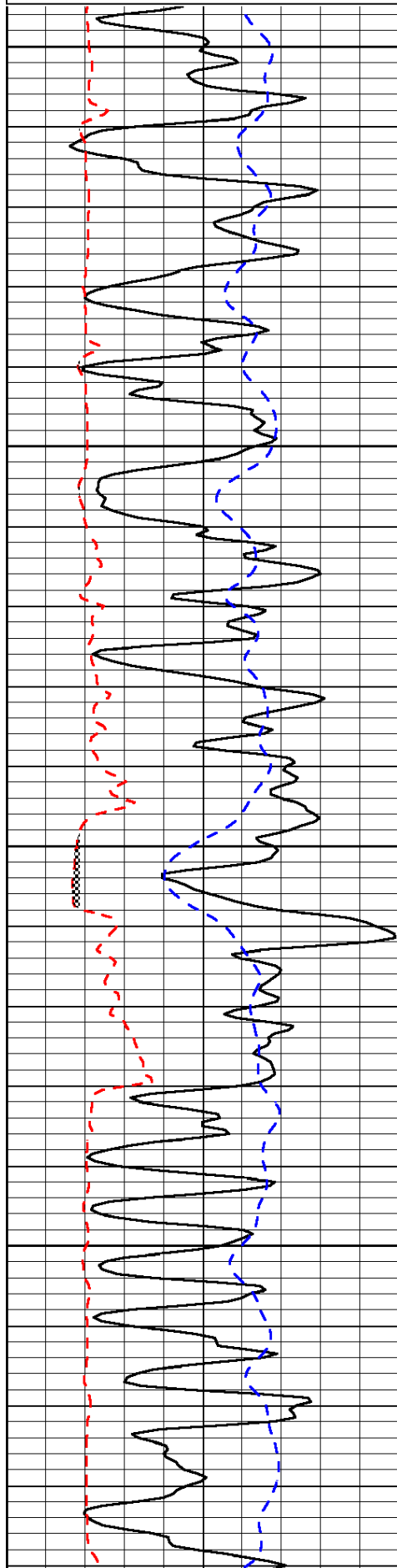
Thank you for using Pioneer Energy Services
www.pioneerenergy.com
 785 625 3858
 Scott City, KS
 8 W, 1 N, 1 W, 5 1/2 N, 1 W, W Into

Database File: c:\warrior\data\landmark_decker #1-17\landhd.db
 Dataset Pathname: DIL\lanstk
 Presentation Format: micro
 Dataset Creation: Wed Mar 20 06:54:56 2013
 Charted by: Depth in Feet scaled 1:240

0	Gamma Ray	150
6	Micro Log Caliper (GAPI)	16
-200	SP (mV)	0

0	Micro Inverse 1 X 1	40
0	Micro Normal 2"	40
15000	Line Weight	0

LSPD



3500

3550

3600

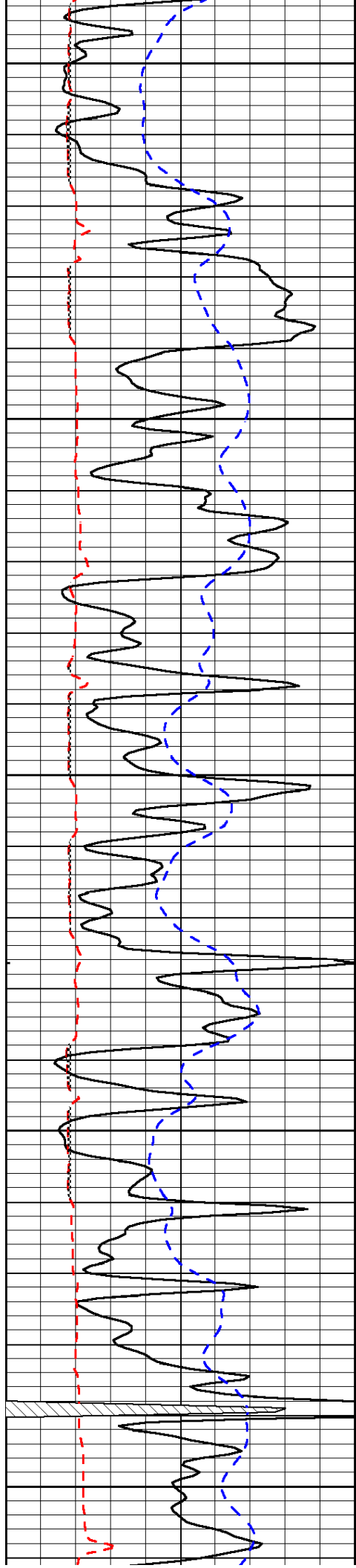
3650

-31

-31

-31

-31



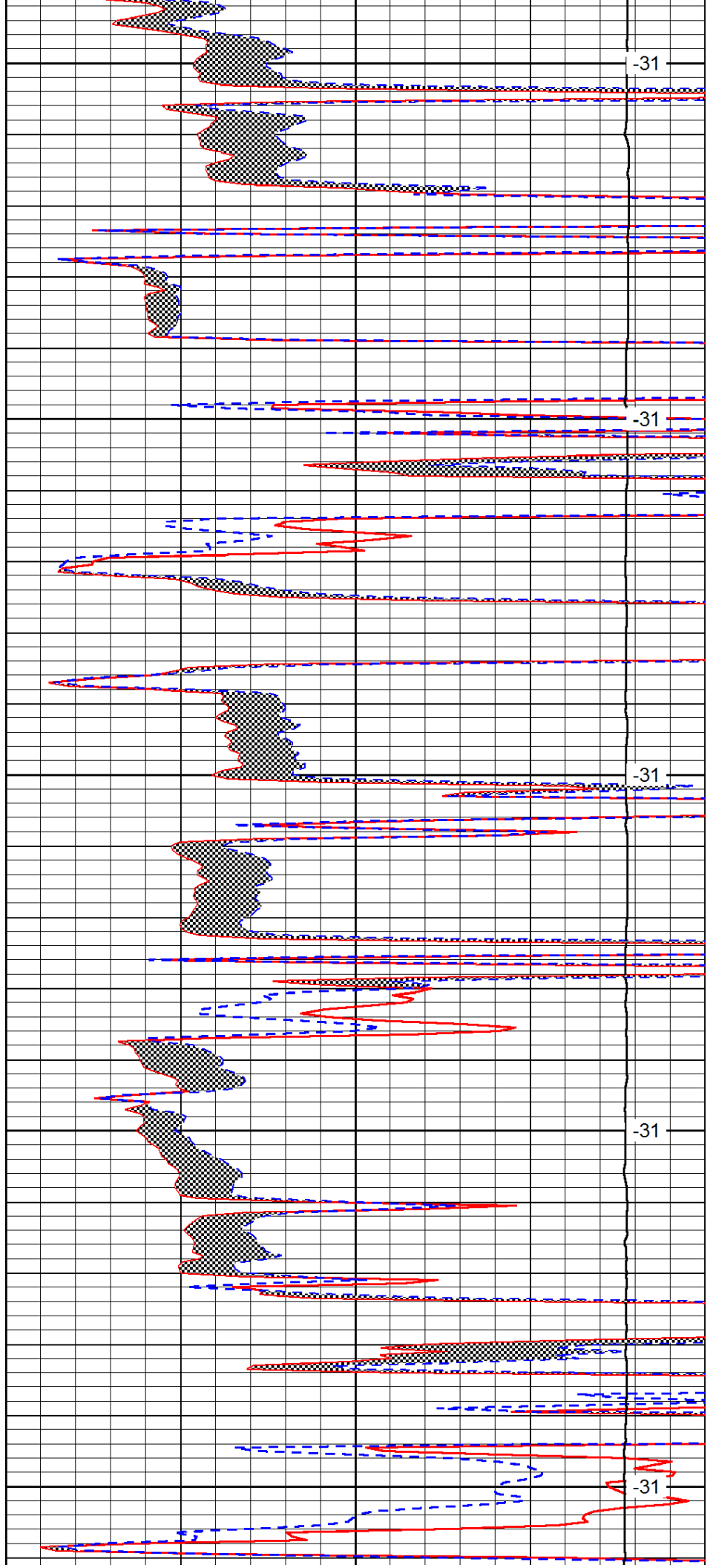
3700

3750

3800

3850

3900



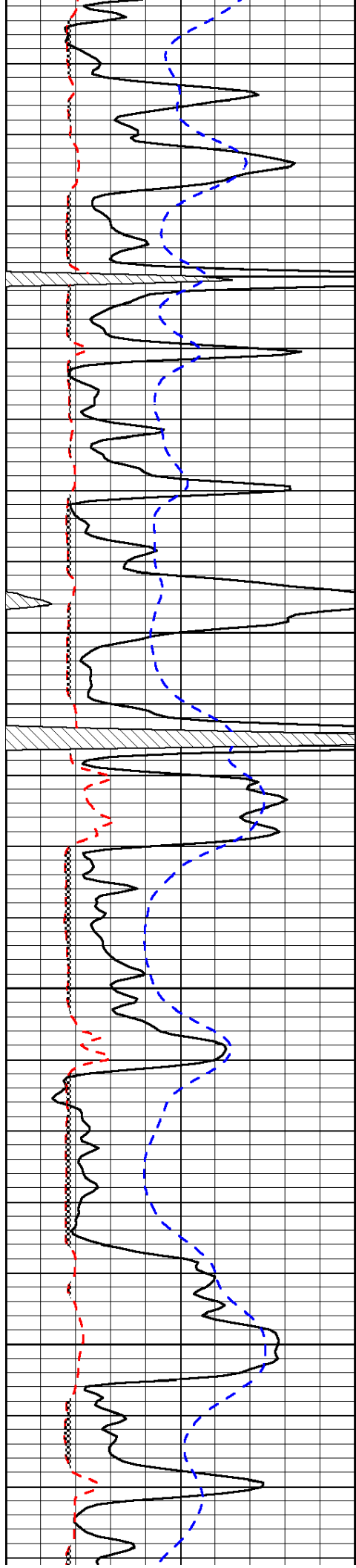
-31

-31

-31

-31

-31

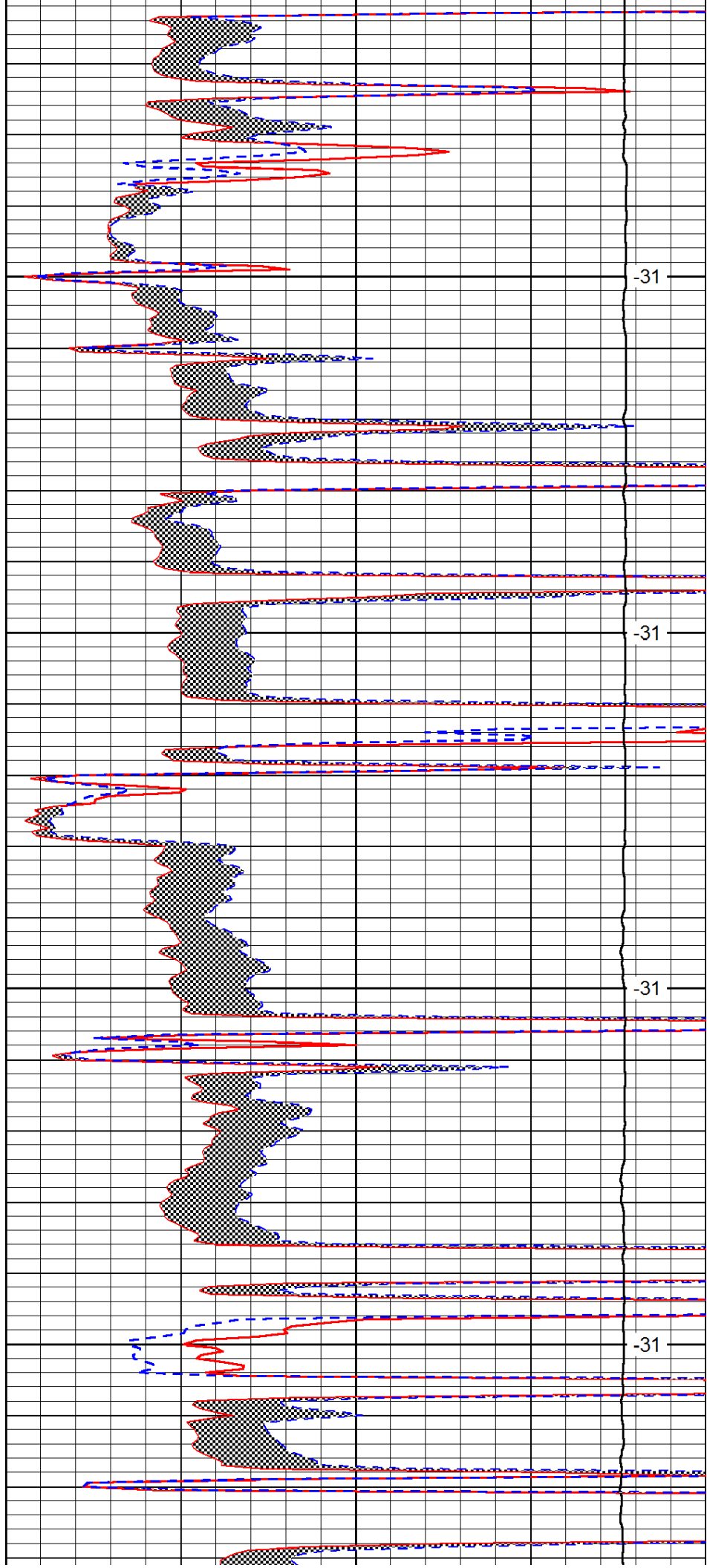


3950

4000

4050

4100

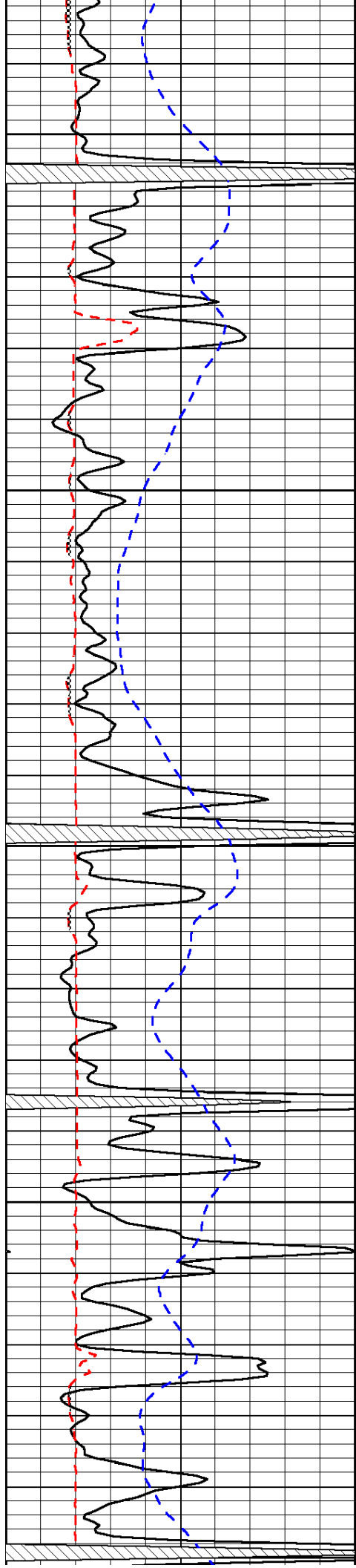


-31

-31

-31

-31



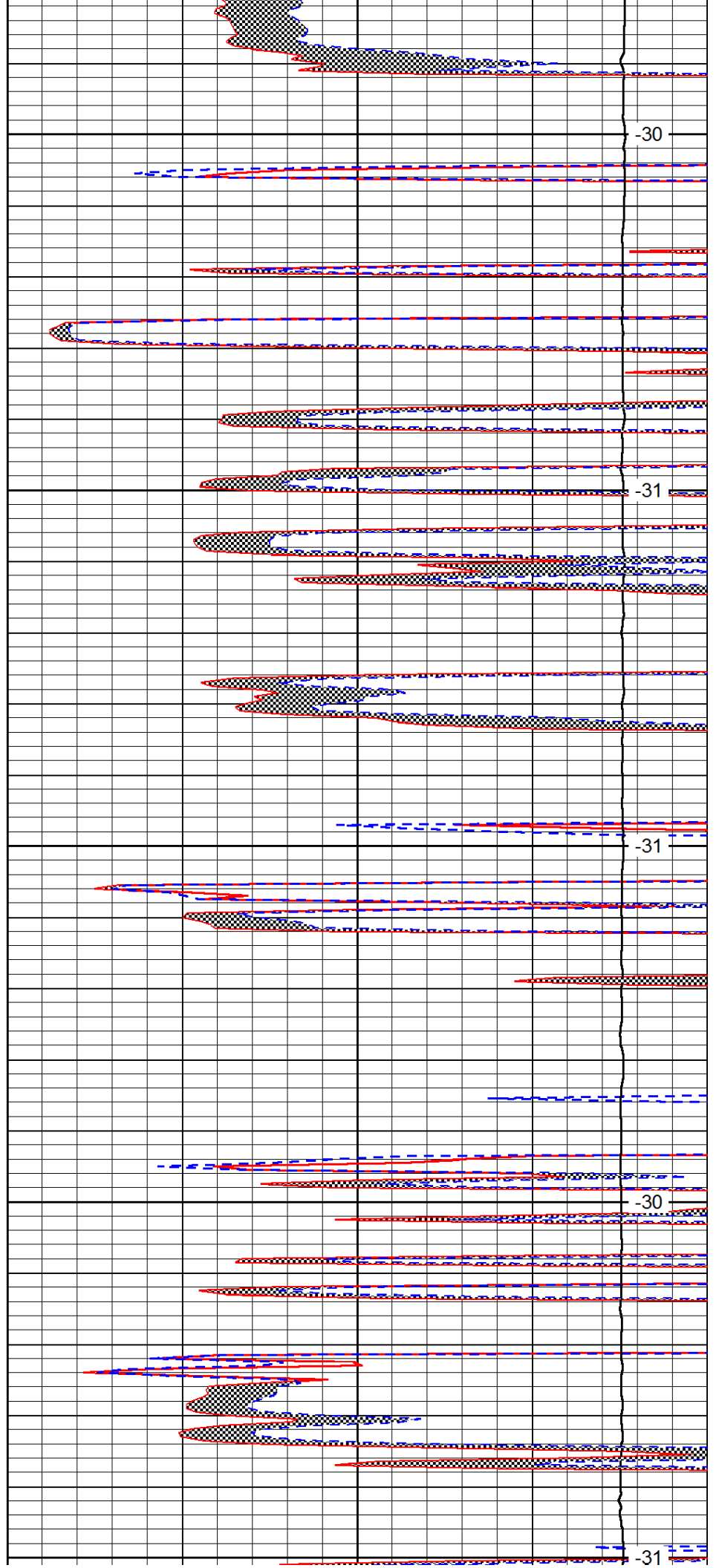
4150

4200

4250

4300

4350



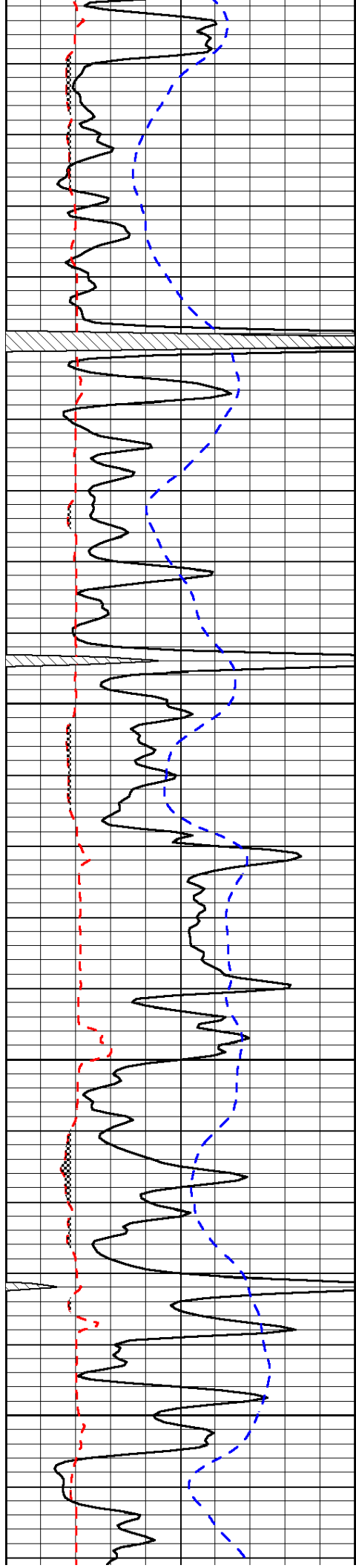
-30

-31

-31

-30

-31

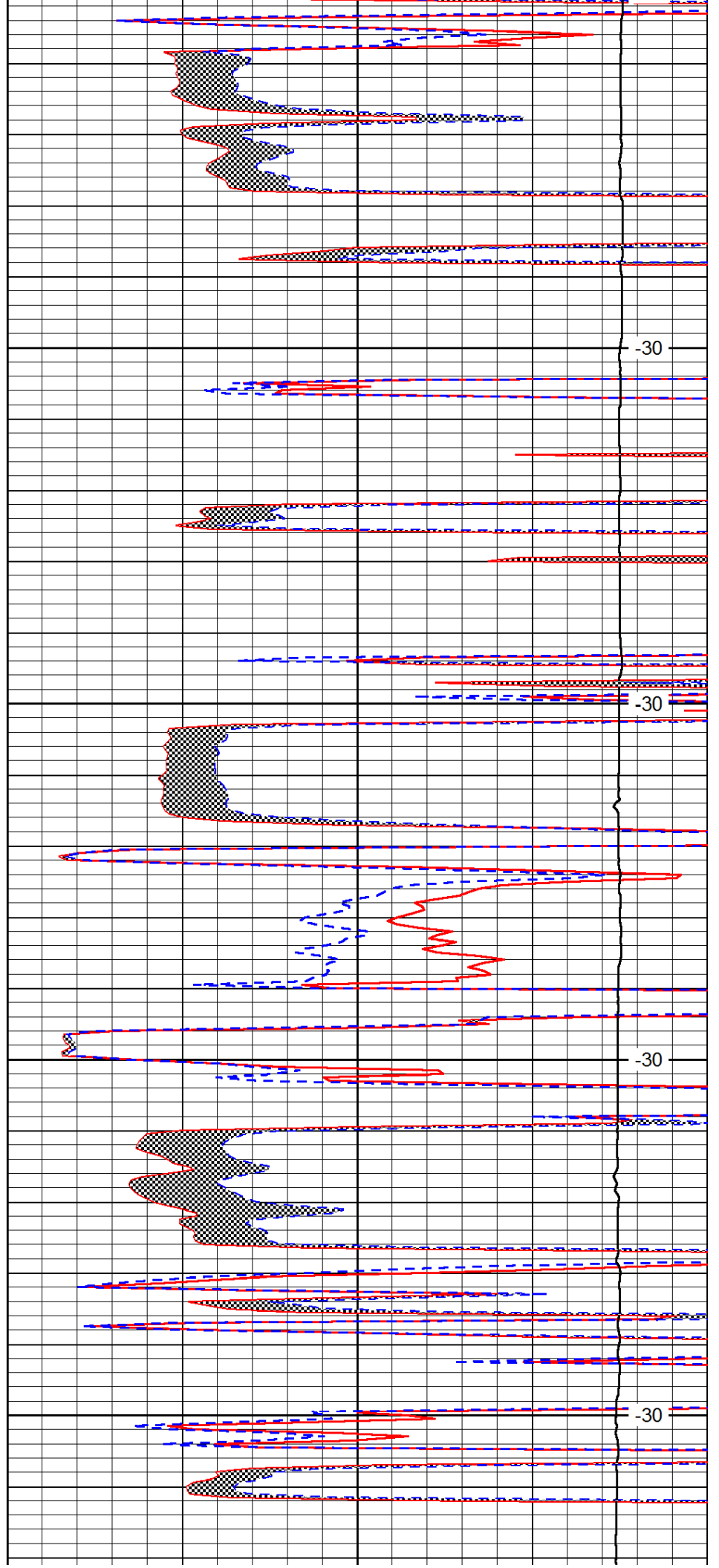


4400

4450

4500

4550

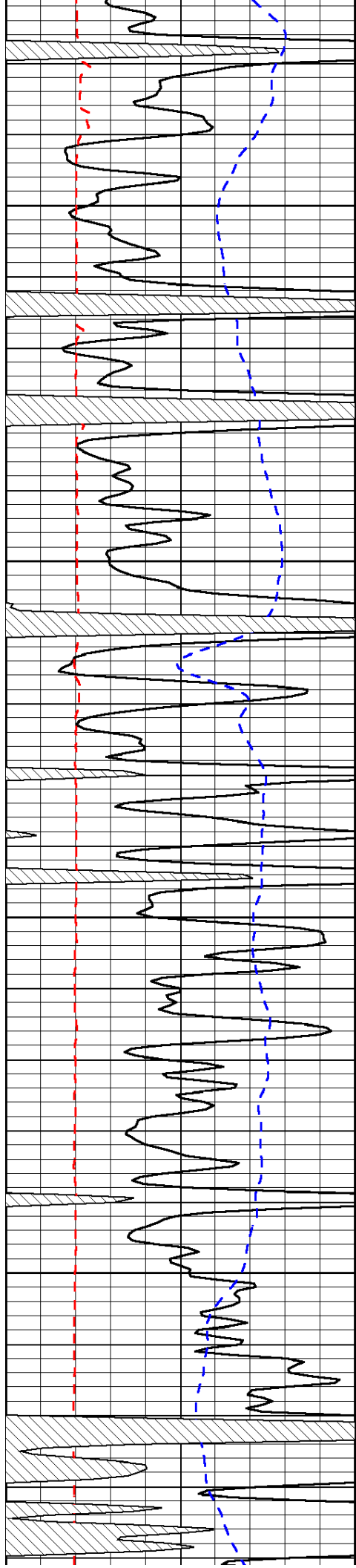


-30

-30

-30

-30

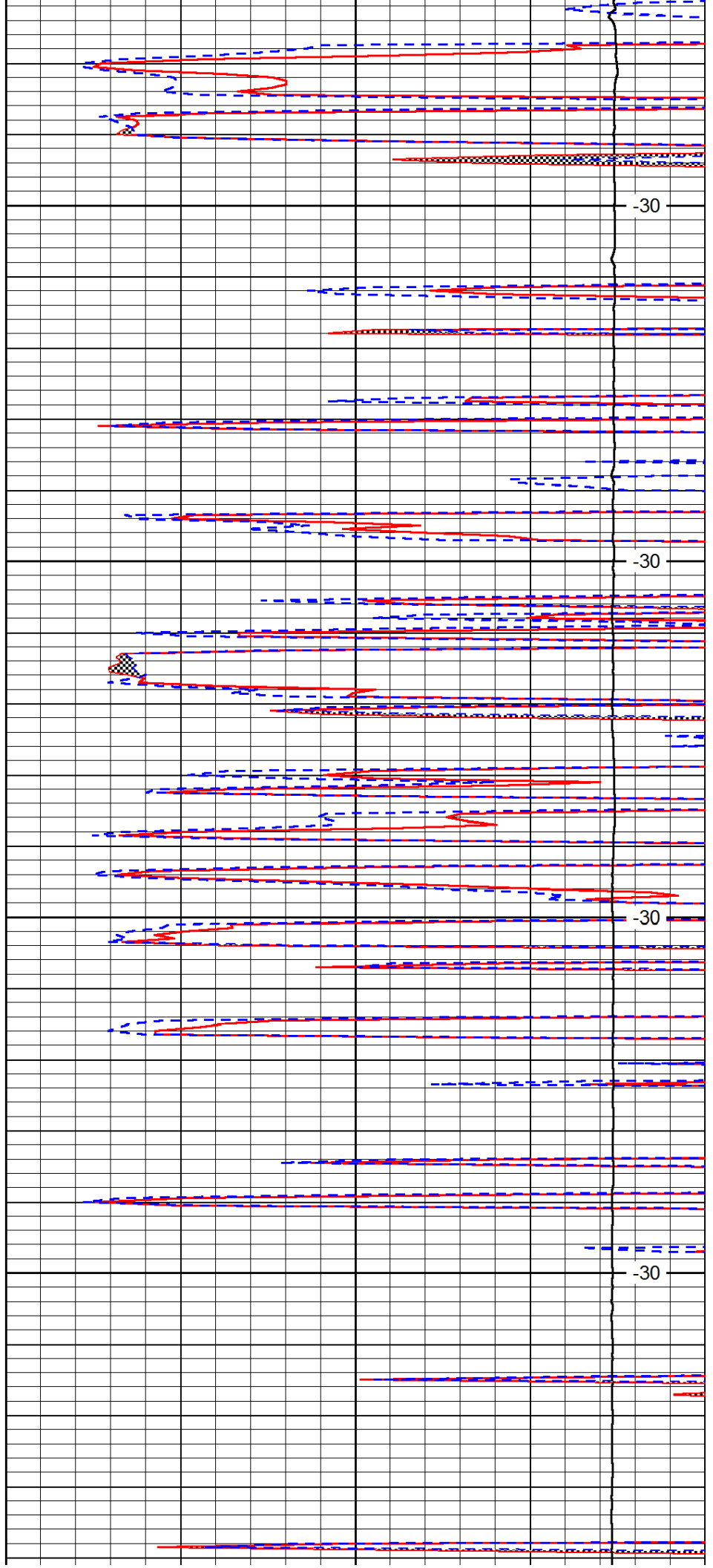


4600

4650

4700

4750

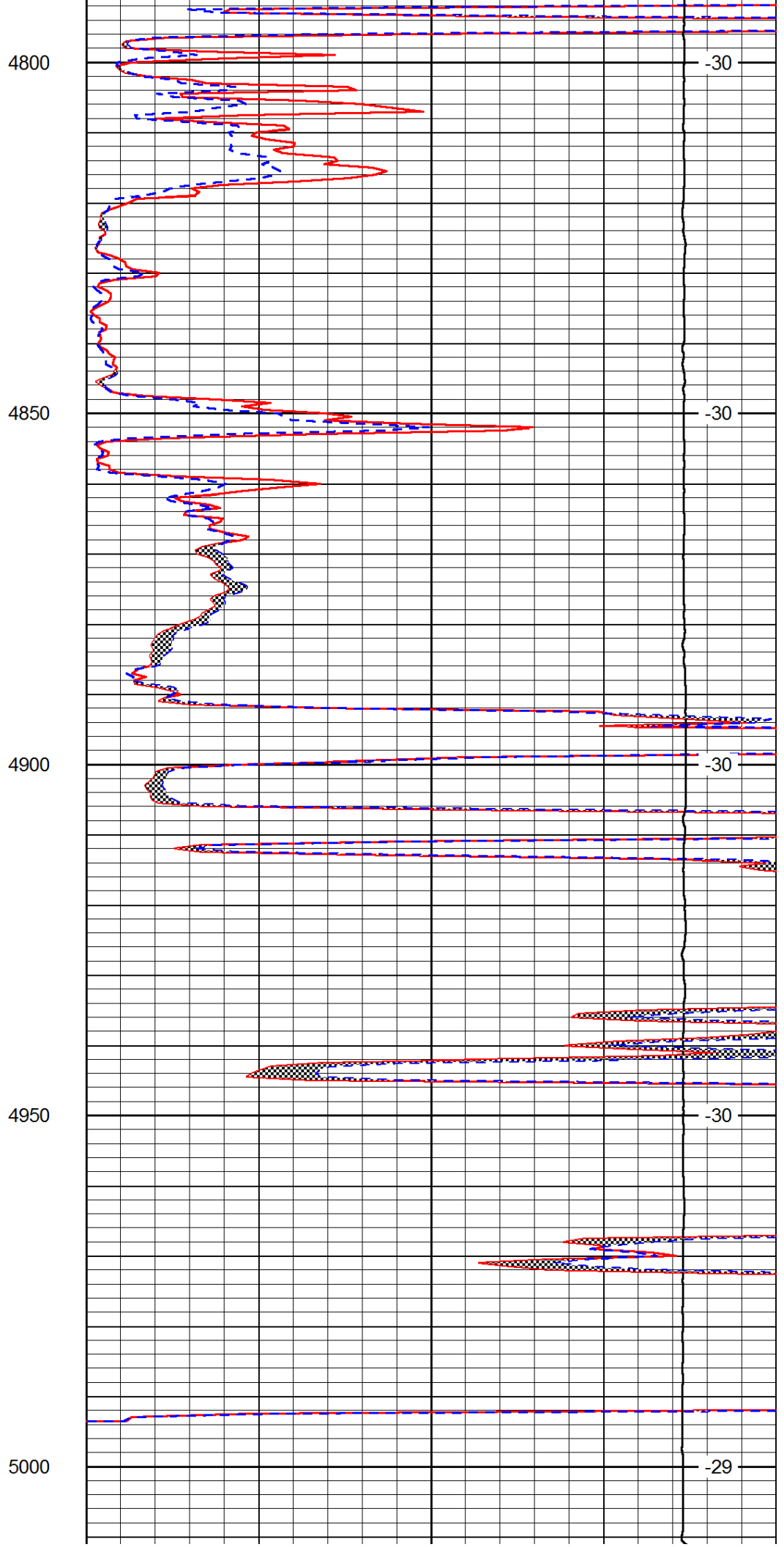
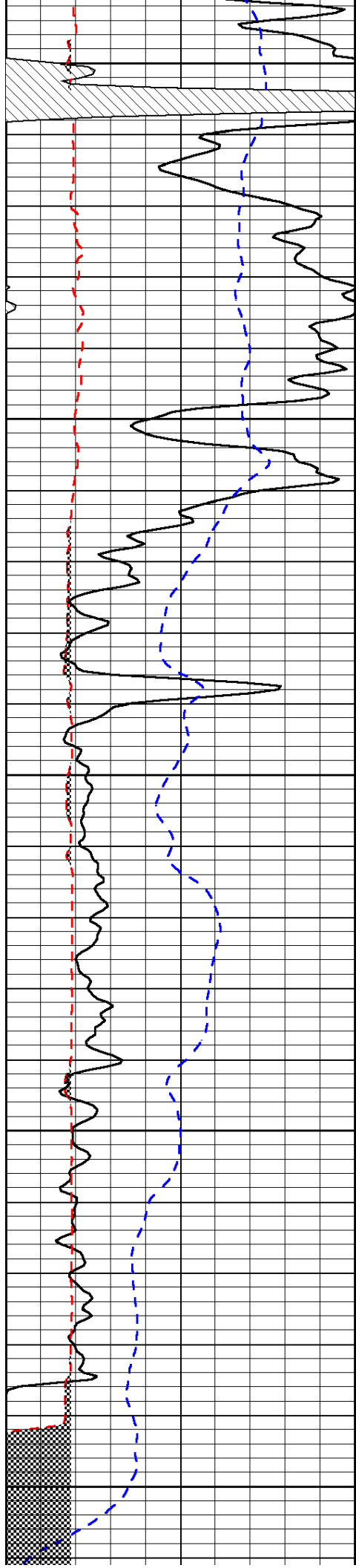


-30

-30

-30

-30



0	Gamma Ray	150
6	Micro Log Caliper (GAPI)	16
-200	SP (mV)	0

0	Micro Inverse 1 X 1	40
0	Micro Normal 2"	40
15000	Line Weight	0

LSPD