



Pioneer Energy Services

Sector Bond / Gamma Ray
CCL Log

15-171-20935-00-00

Company Landmark Resources Inc.

Well Decker No. 1-17

Field Wildcat

County Scott

State Kansas

Location

2525' FNL & 2100' FEL

Other Services

Sec: 17 Twp: 17 S Rge: 34 W

Elevation

Permanent Datum Ground Level Elevation 3139

Log Measured From Kelly Bushing 11 Ft. Above Perm. Datum

Drilling Measured From Kelly Bushing K.B. 3150 D.F. G.L. 3139

Run Number One

Date Survey 04/04/2013

Date Cementing 03/20/2013

Type Cementing Operation Primary

Depth Driller 5010

Depth Logger 4946

Logged Interval 4945 to 3550

Casing Driller 5.5 @ TD @

Float Collar -- D.V. Tool /// 2459

Squeeze Depth ///

Amount & Type Cement ///

Amount & Type Admix ///

Type Fluid In Hole Water

Fluid Level 486

Salinity PPM CL ///

Weight lb/gal -- Vis. ///

Approx. Logged Cement Top 3748

Calculated Cement Top

Max. Hole Temperature 126

Tool No. RBT 71

Spacing Recorded 3-5

Equipment -- Location 71 Hays

Recorded By Scott Clemons

Witnessed By Jason Walker

<<< Fold Here >>>

All interpretations are opinions based on inferences from electrical or other measurements and we cannot and do not guarantee the accuracy or correctness of any interpretation, and we shall not, except in the case of gross or willful negligence on our part, be liable or responsible for any loss, costs, damages, or expenses incurred or sustained by anyone resulting from any interpretation made by any of our officers, agents or employees. These interpretations are also subject to our general terms and conditions set out in our current Price Schedule.

Comments

Thank you for using Pioneer Energy Services
785-625-3858

Scott City Ks., West 8 Miles to S Dakota Rd,
1 North, 1 West, 5 1/2 North
1 1/4 West Into

Database File: landmark_decker_#1-17.db
 Dataset Pathname: pass5
 Presentation Format: scbl02
 Dataset Creation: Thu Apr 04 12:19:36 2013 by Log SCH 111116
 Charted by: Depth in Feet scaled 1:240

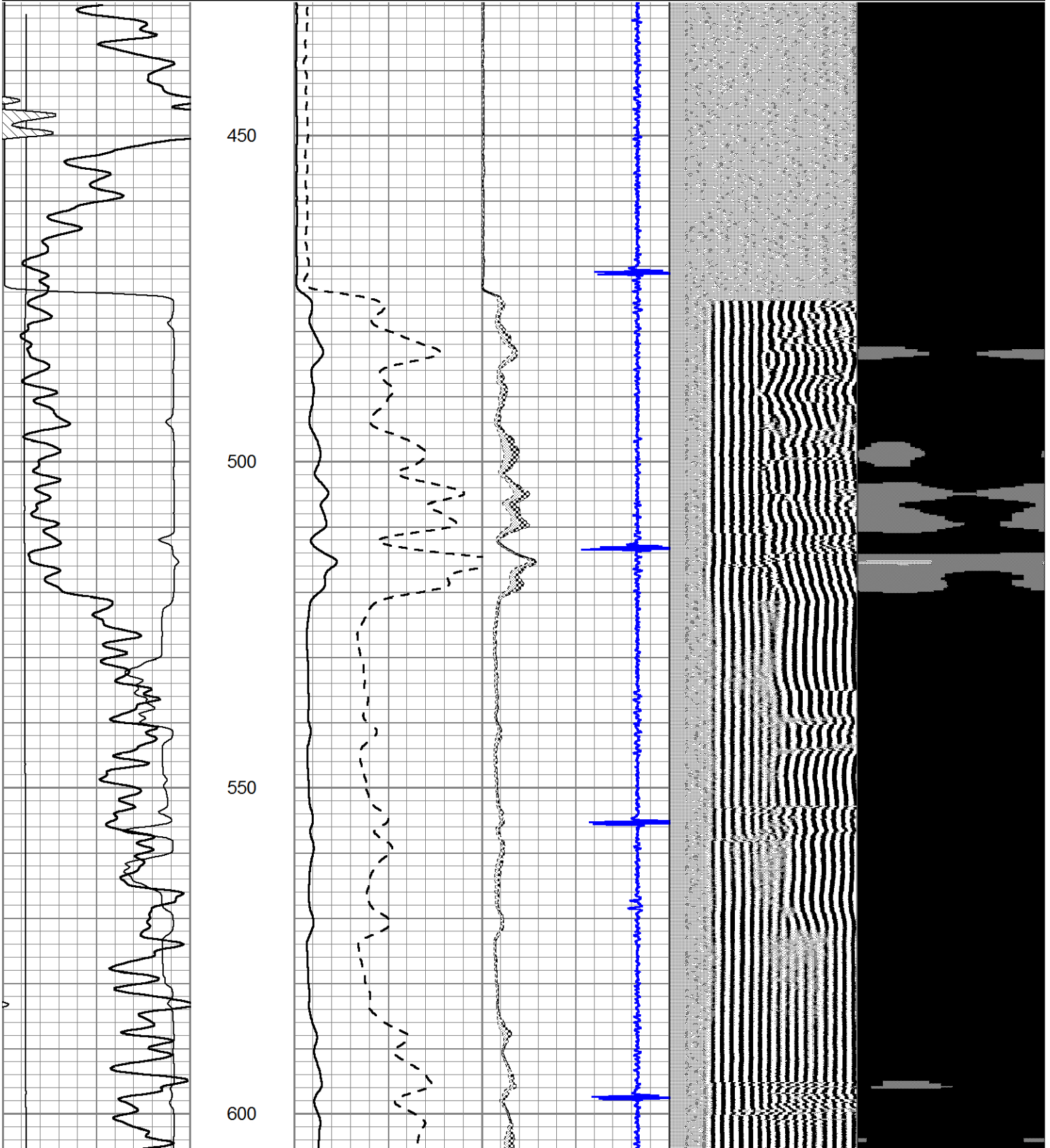
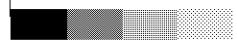
0	GR	150
0	LTEN (lb)	3000
TT3FT		
1200	(usec)	254

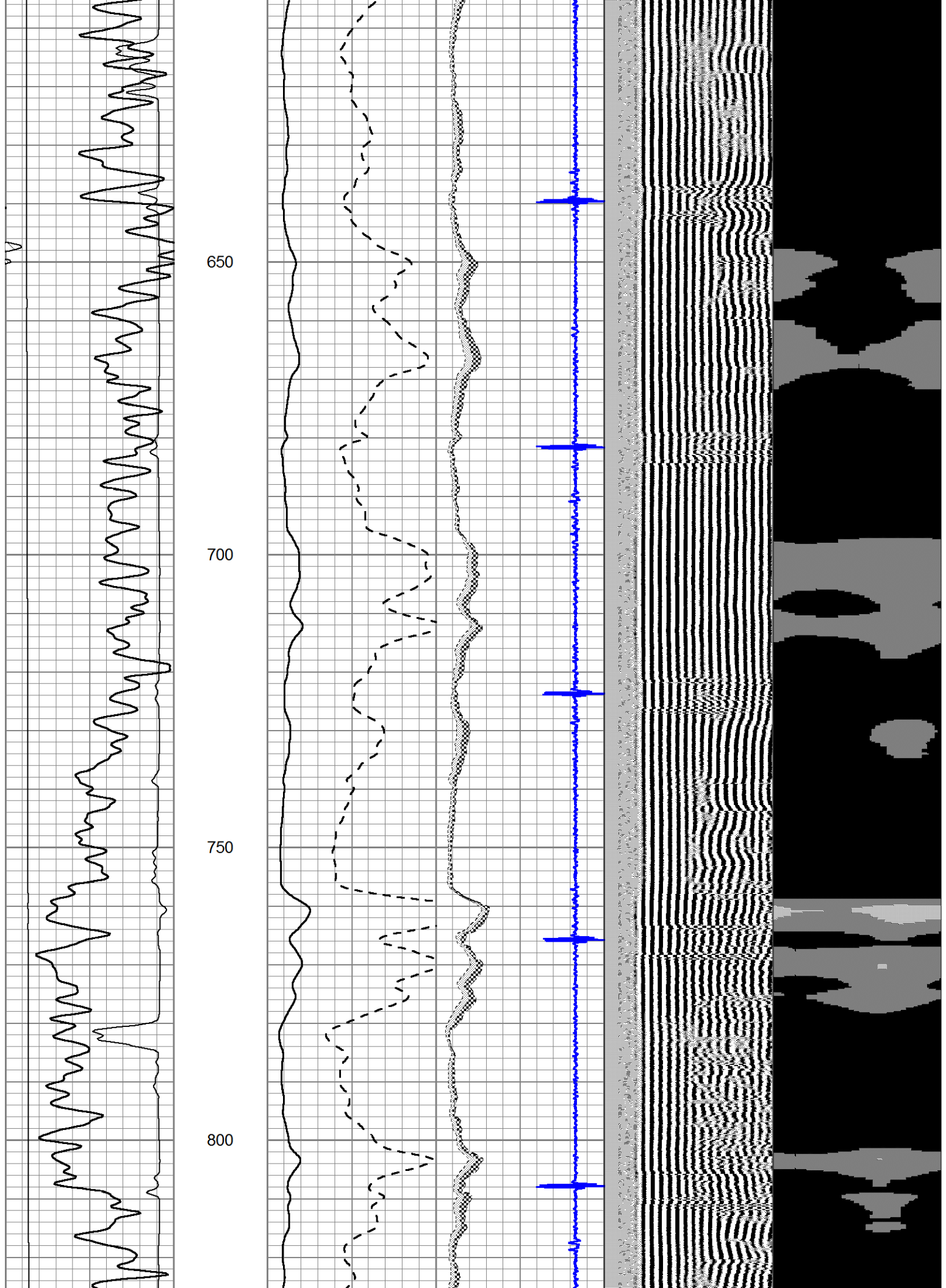
0	AMP (mV)	100	0	AMPAVG	150
0	AMPx5 (mV)	20	0	AMPMAX	150

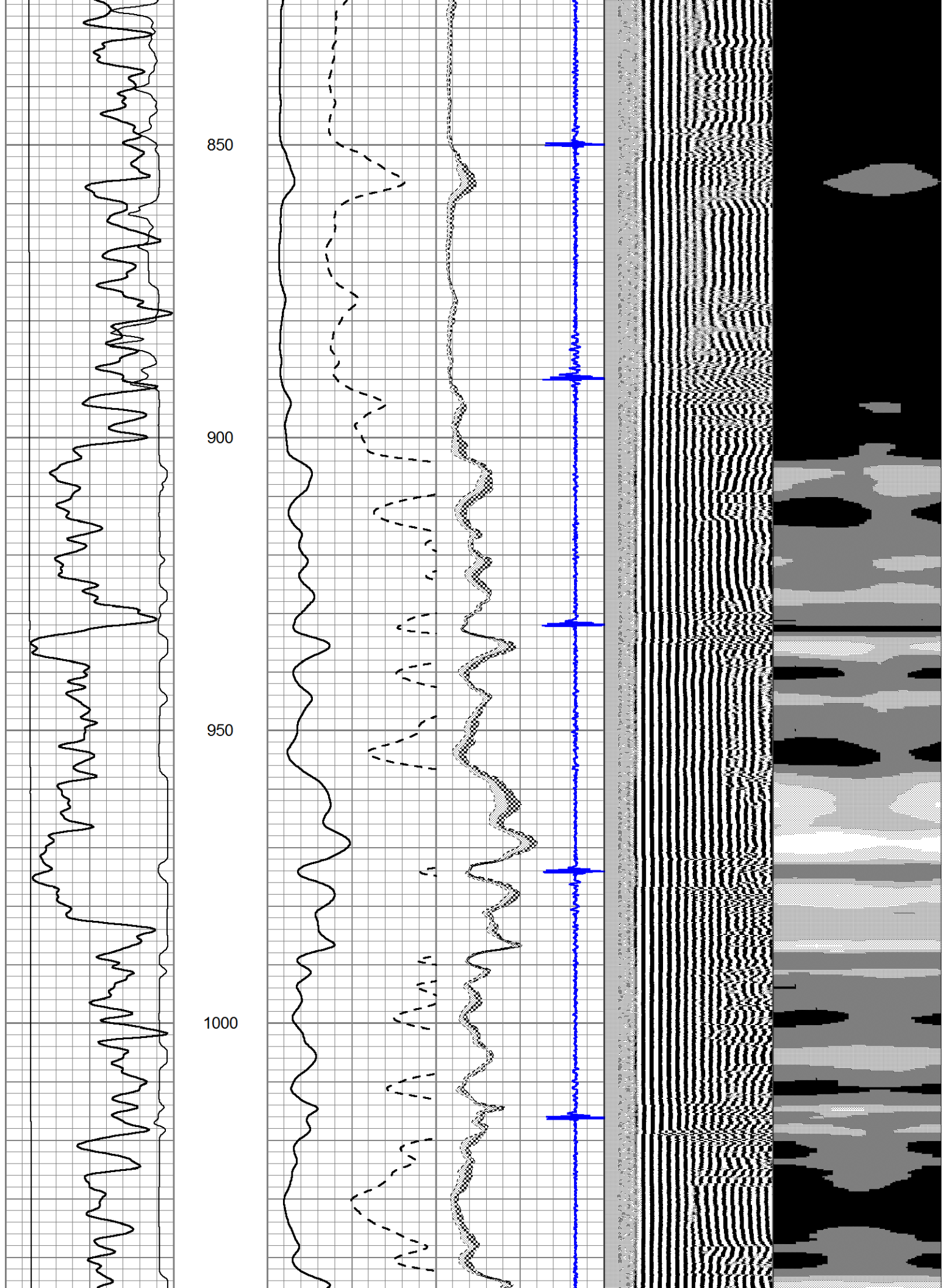
0	AMPMIN	150			

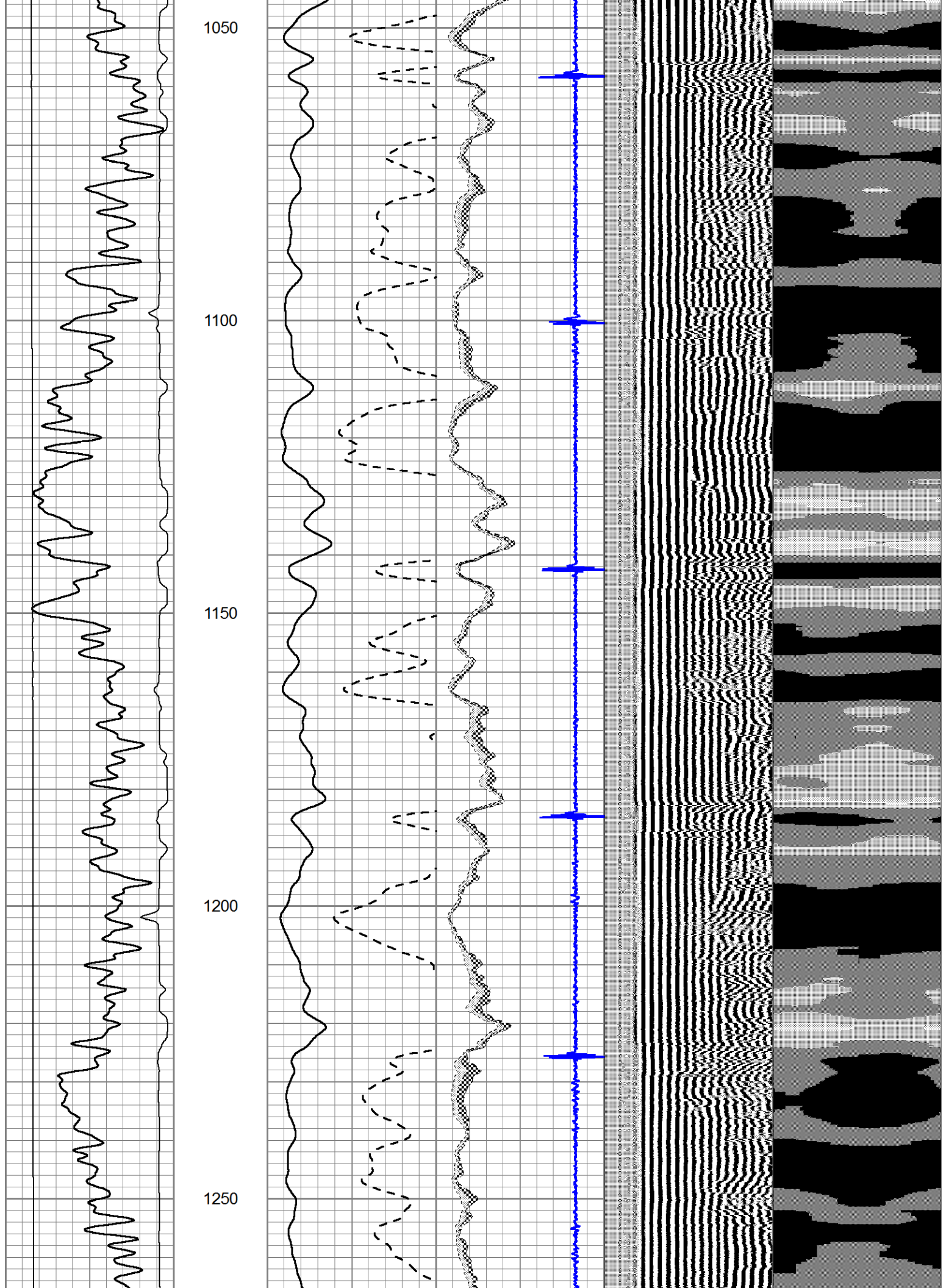
4	CCL	-0.8			

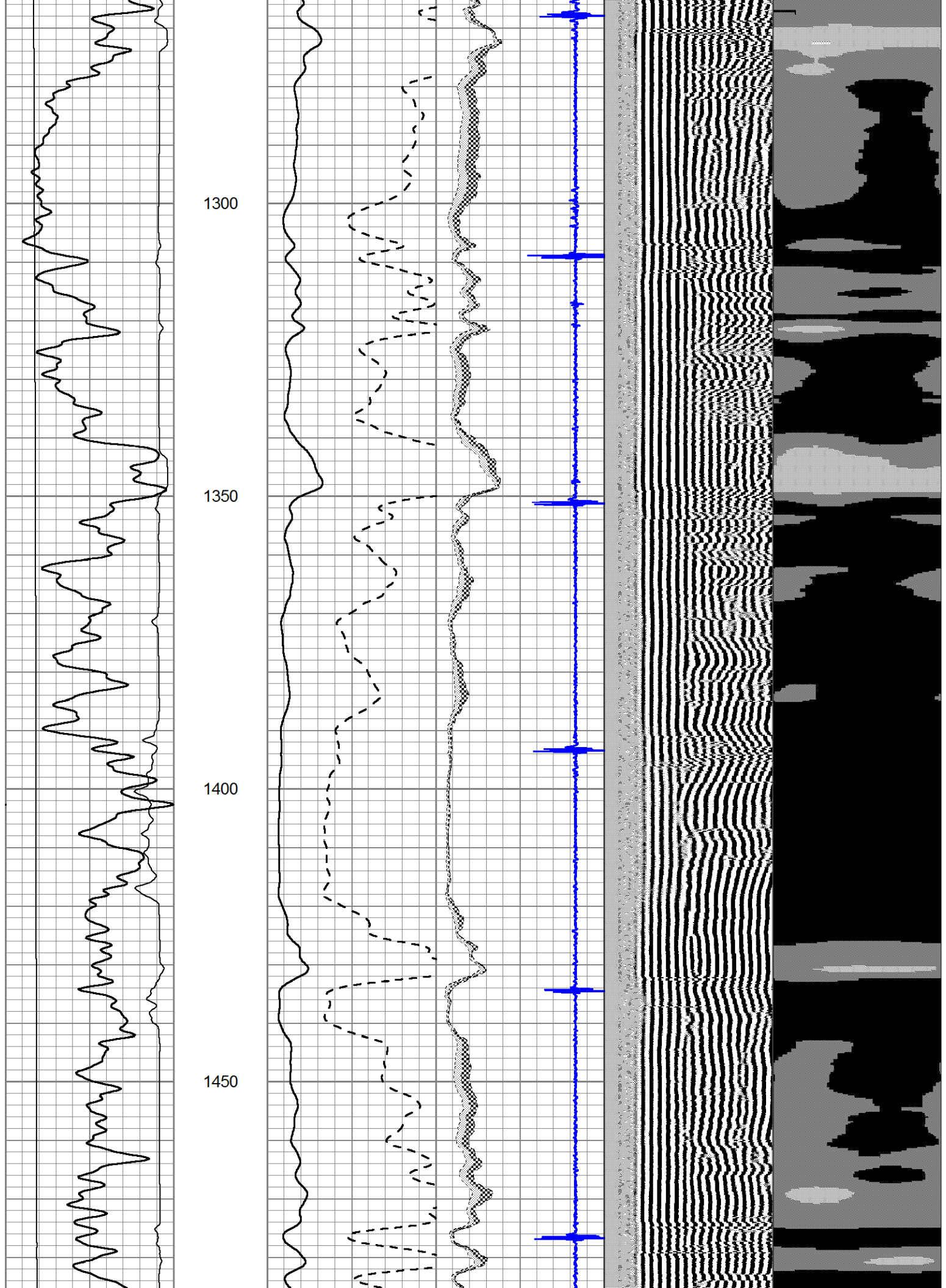
200	VDL	1200	1	Cement Map	8
			25		75

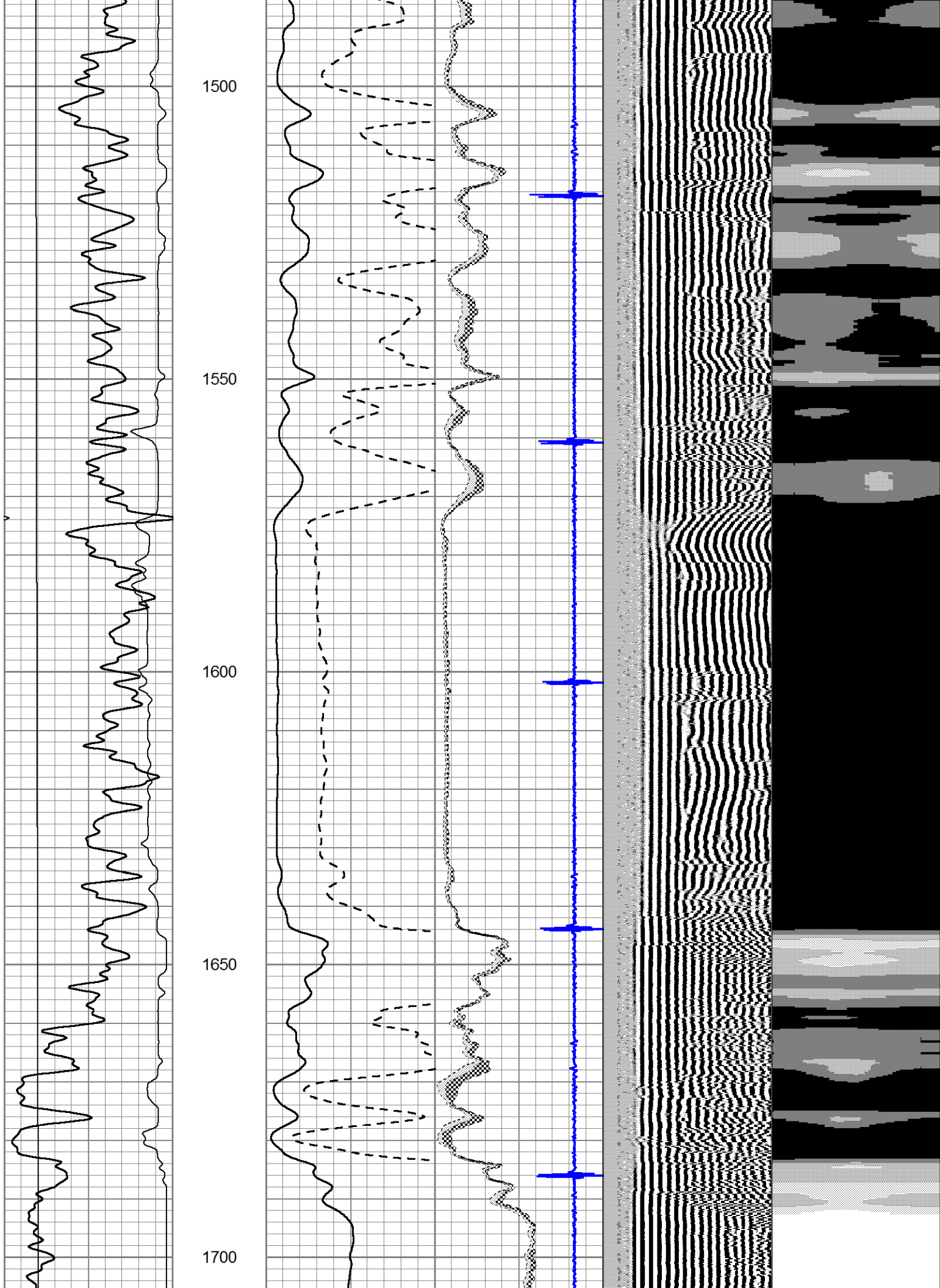


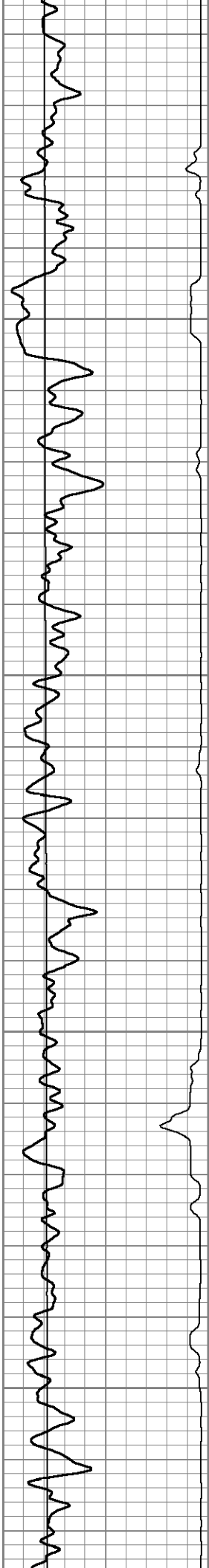










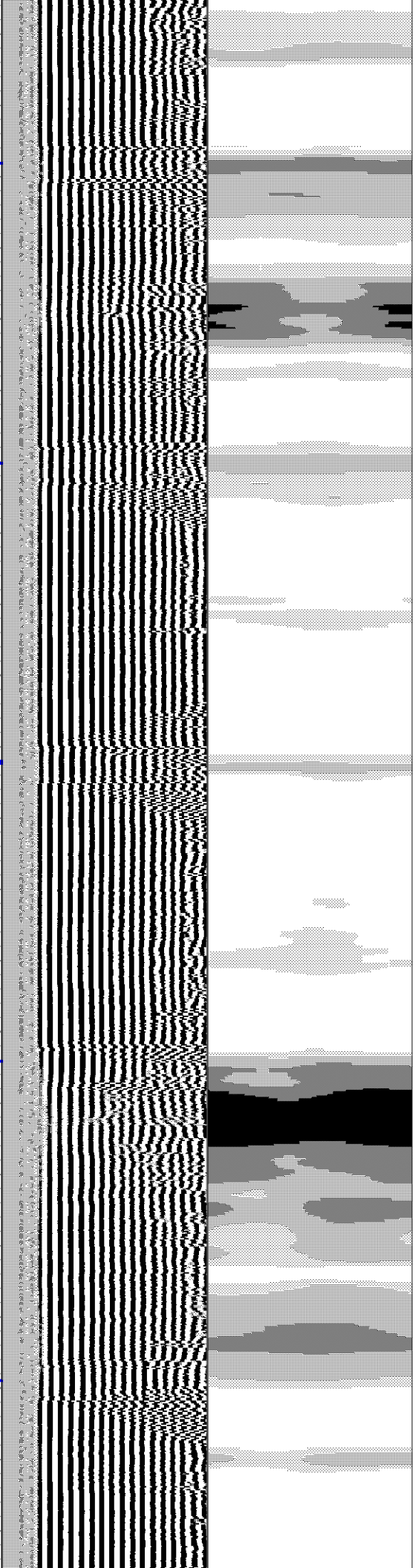
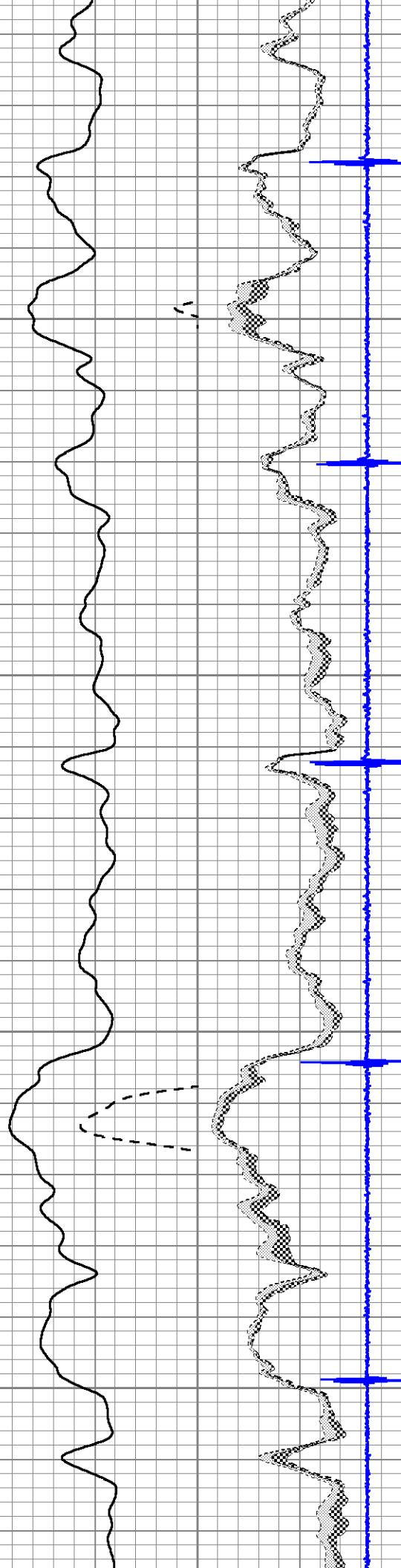


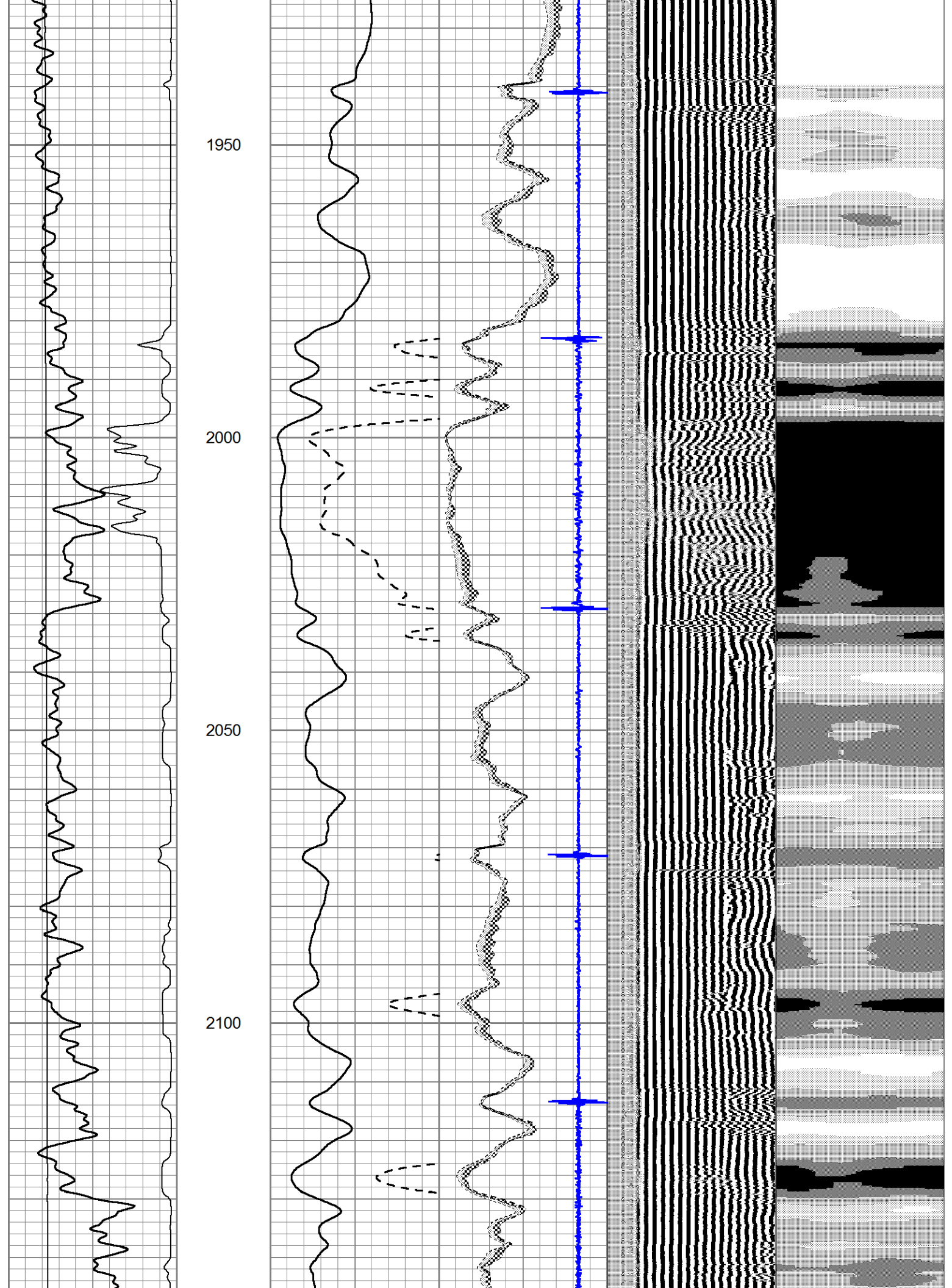
1750

1800

1850

1900





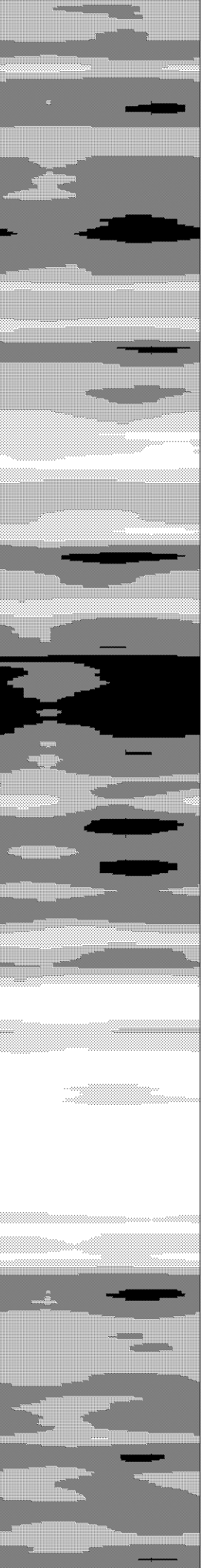
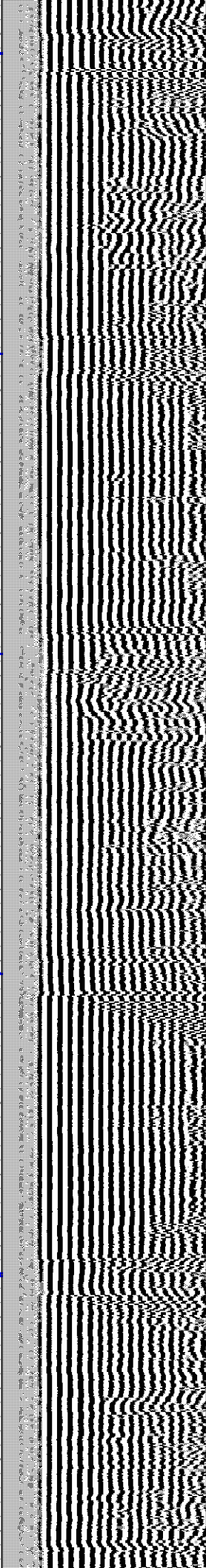
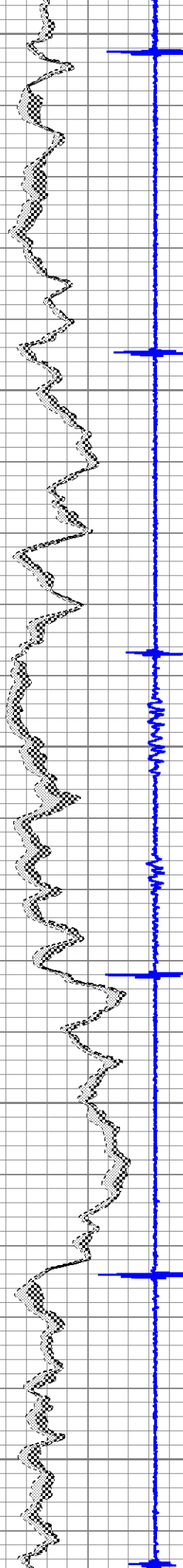
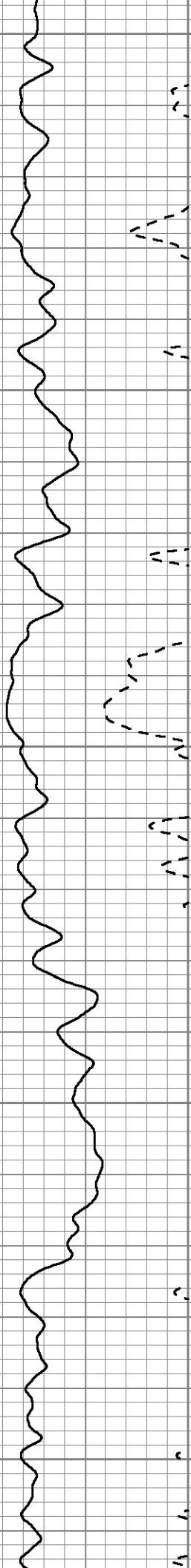
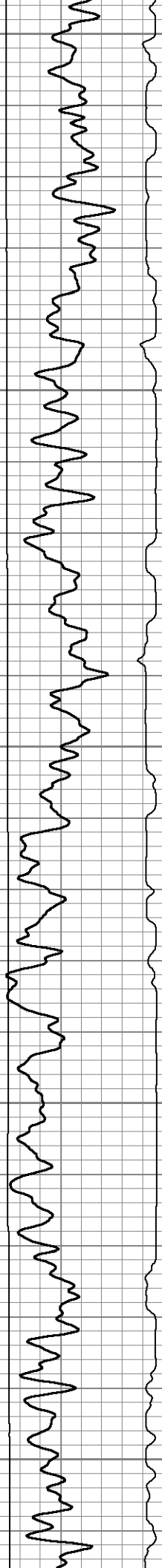
2150

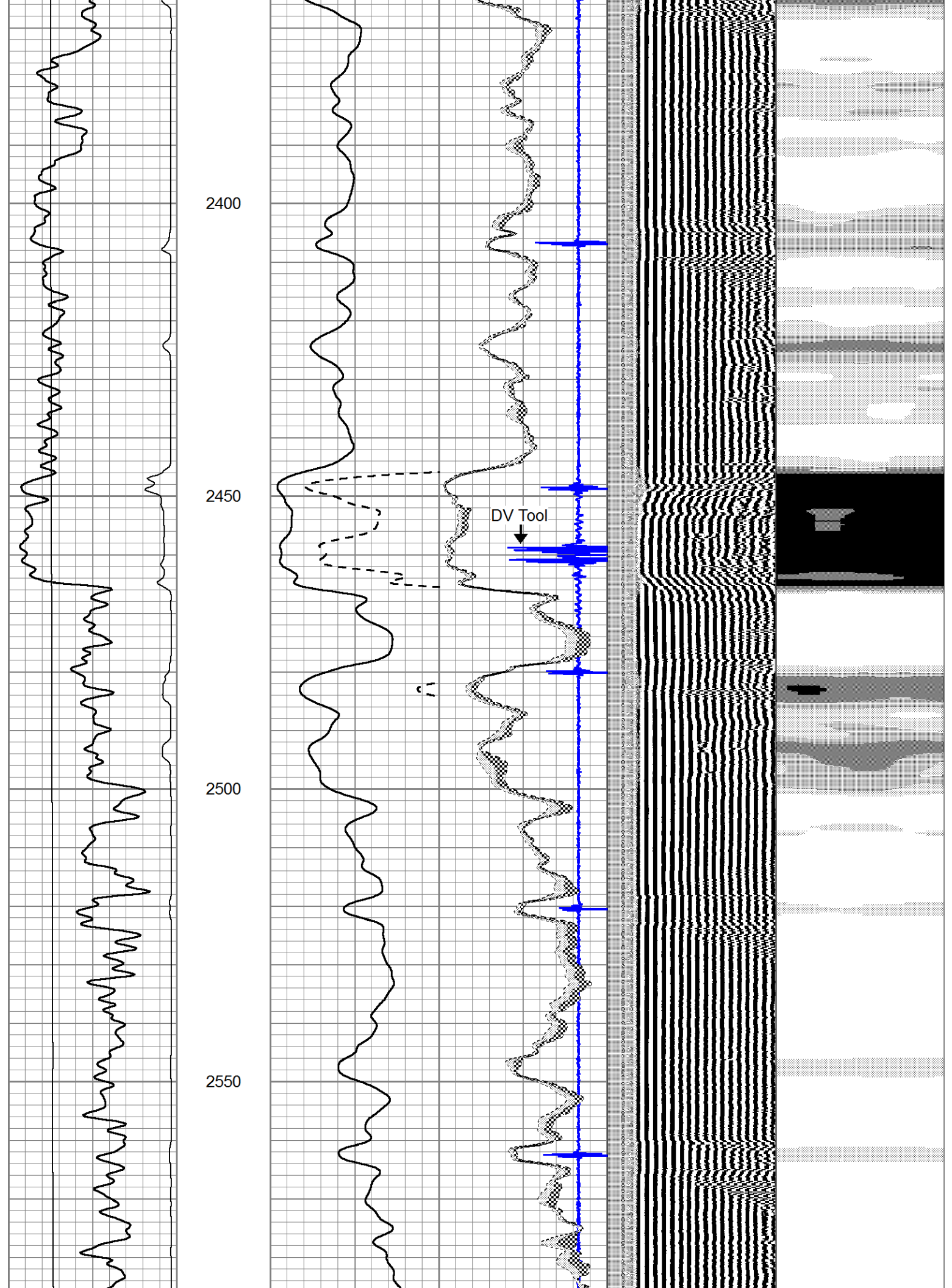
2200

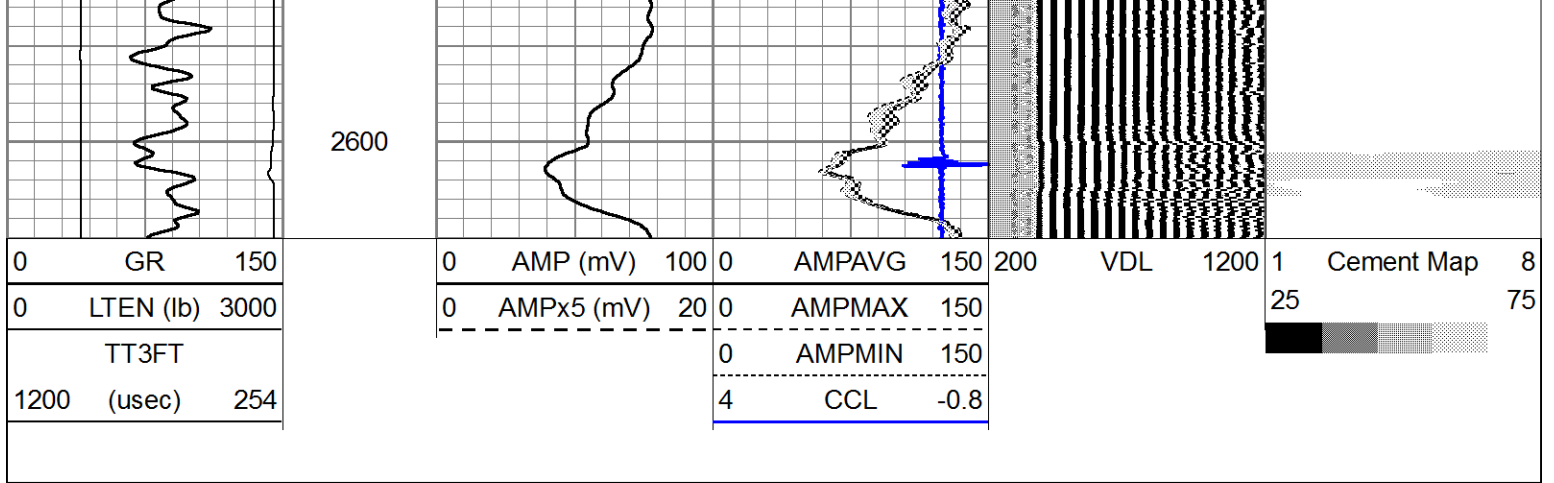
2250

2300

2350

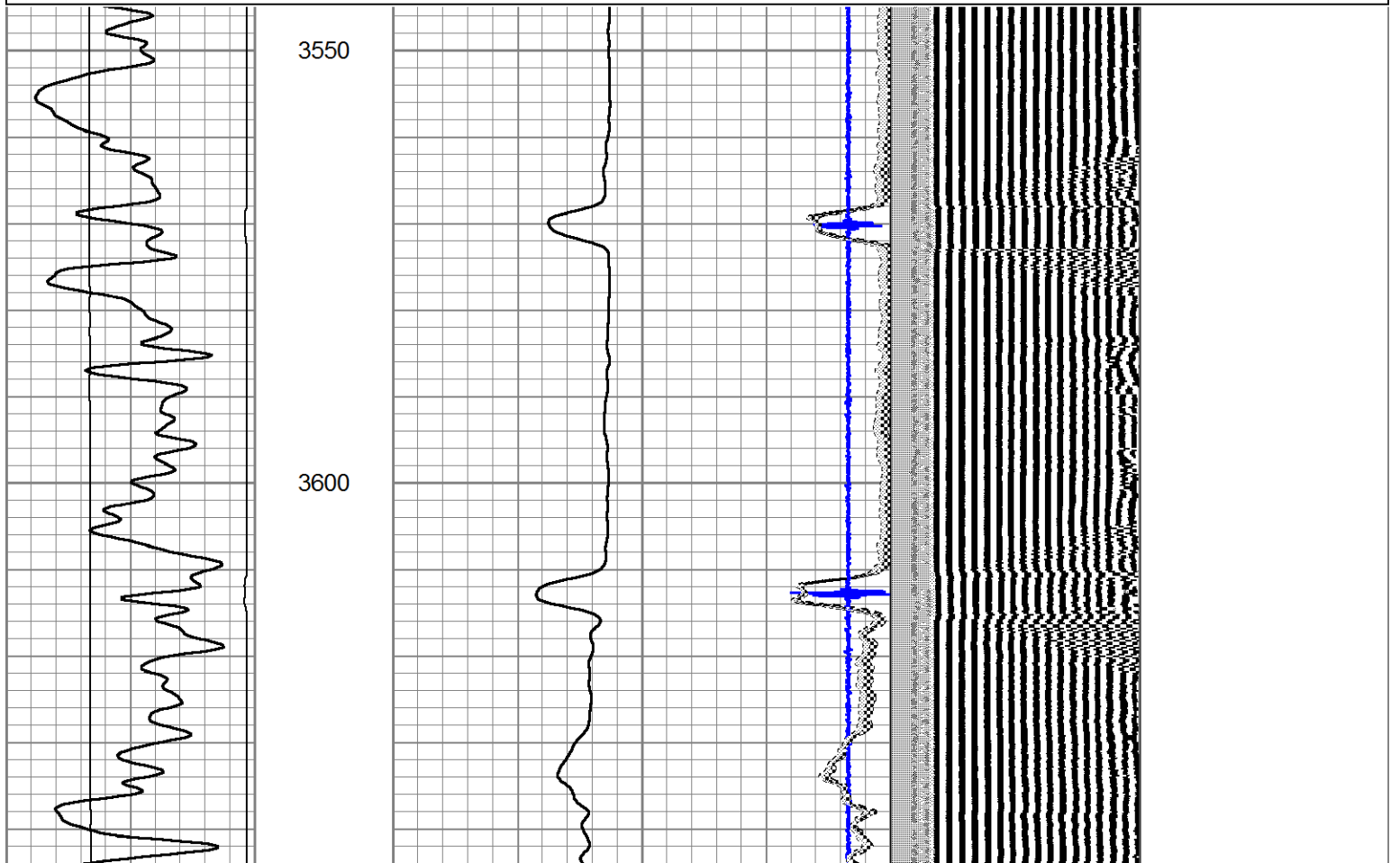
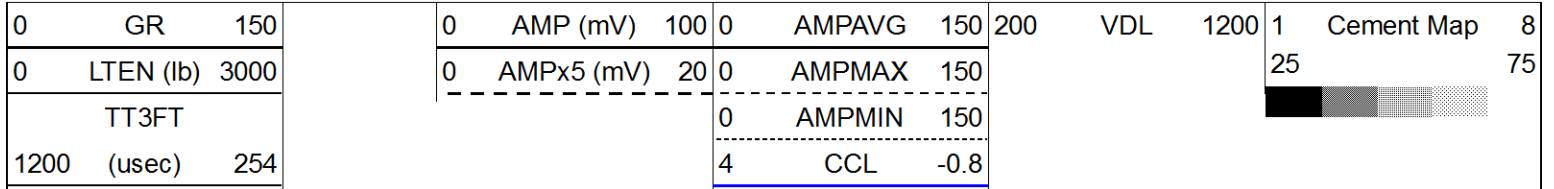






Main Pass

Database File: landmark_decker_#1-17.db
 Dataset Pathname: pass4
 Presentation Format: scbl02
 Dataset Creation: Thu Apr 04 11:43:08 2013 by Log SCH 111116
 Charted by: Depth in Feet scaled 1:240



3650

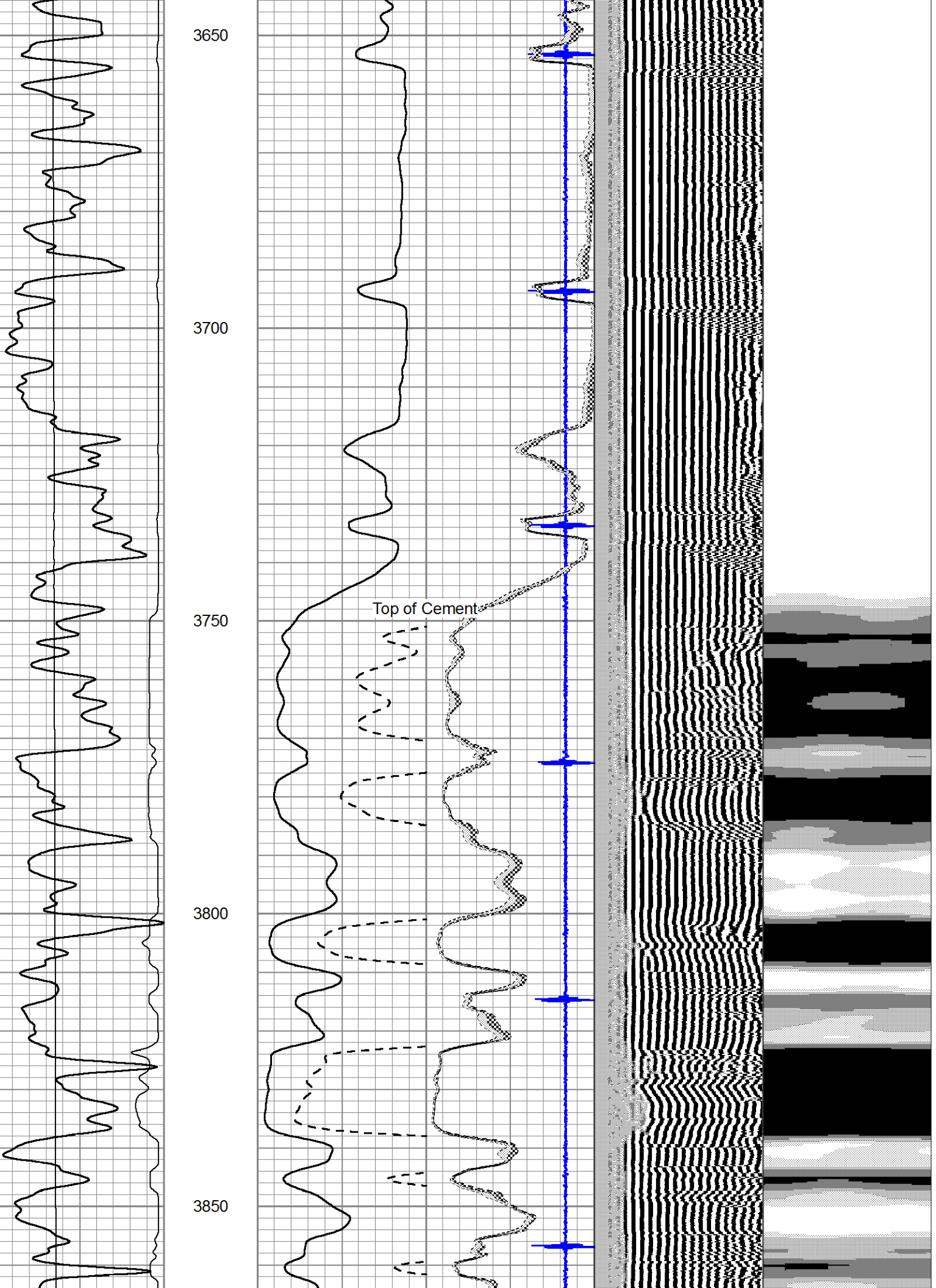
3700

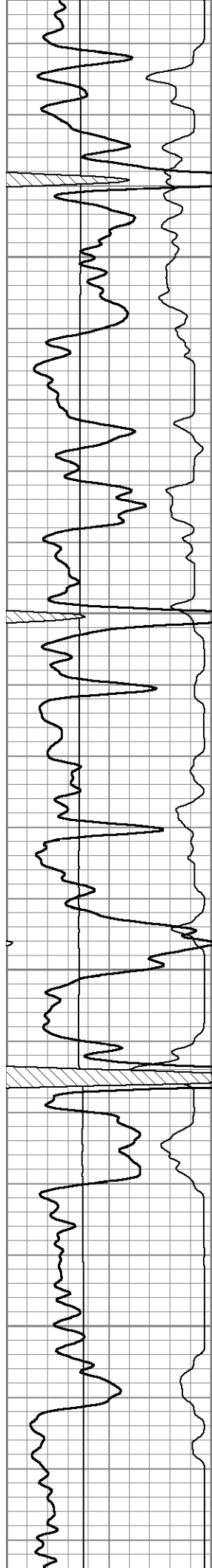
3750

3800

3850

Top of Cement



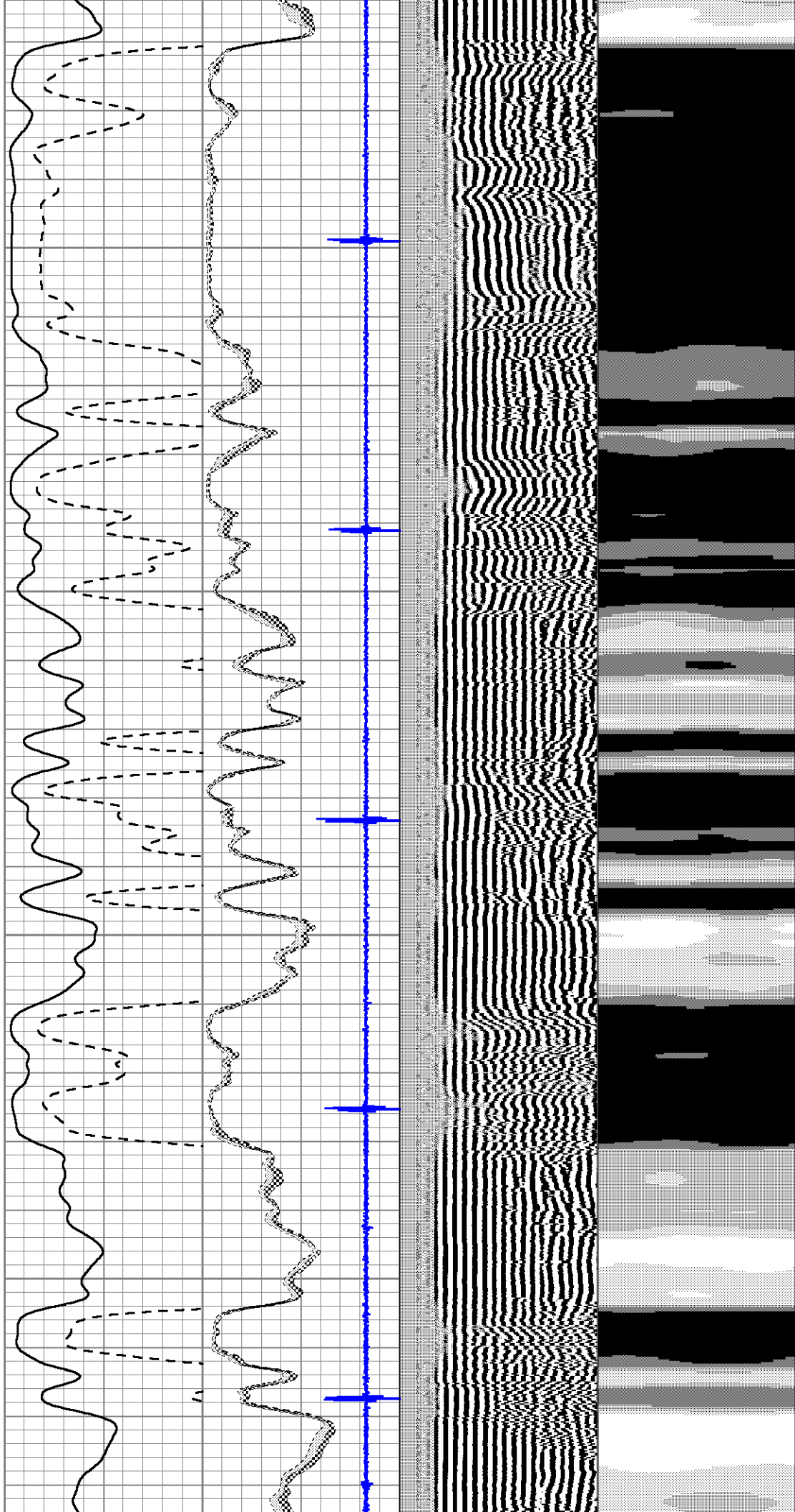


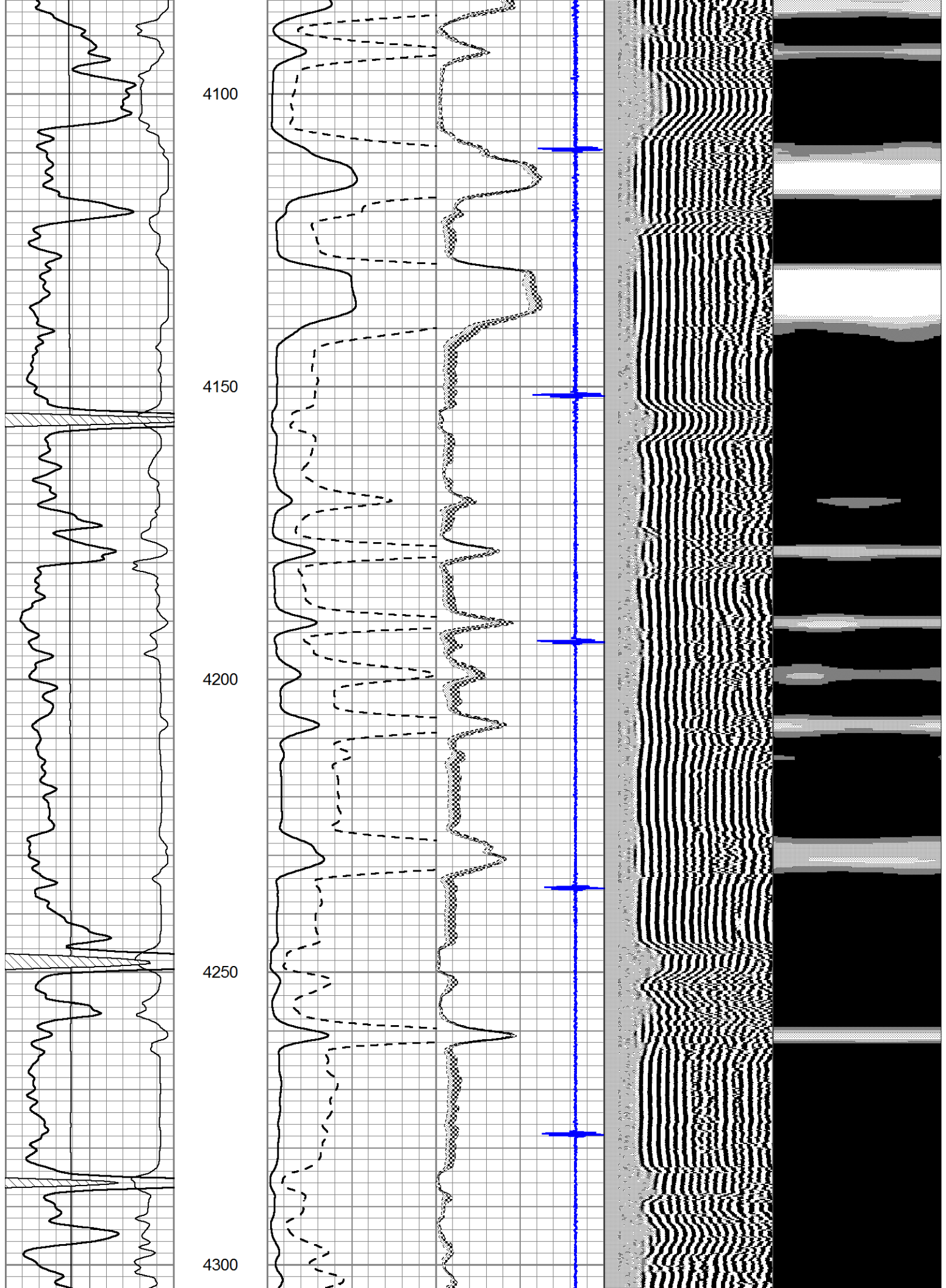
3900

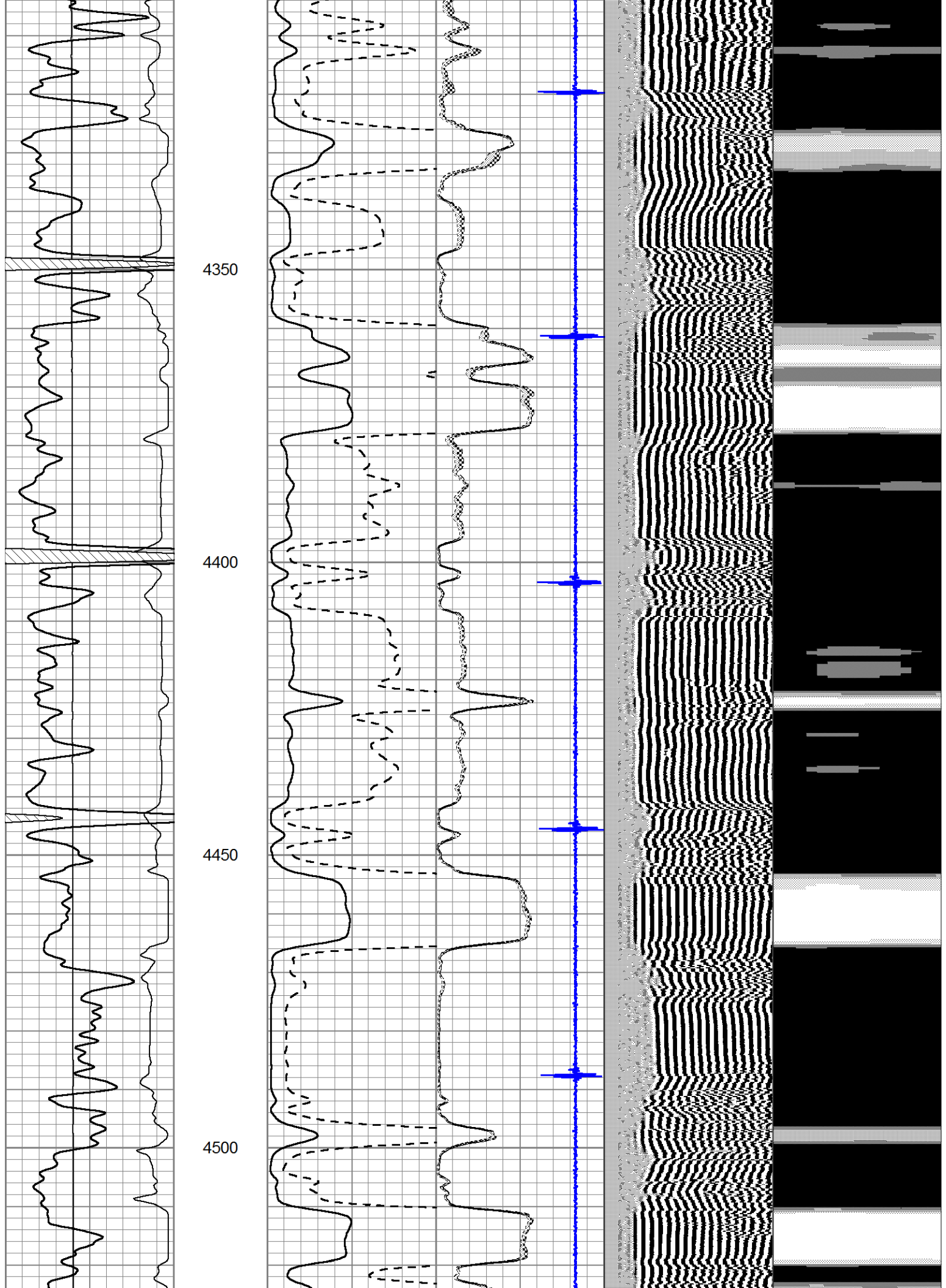
3950

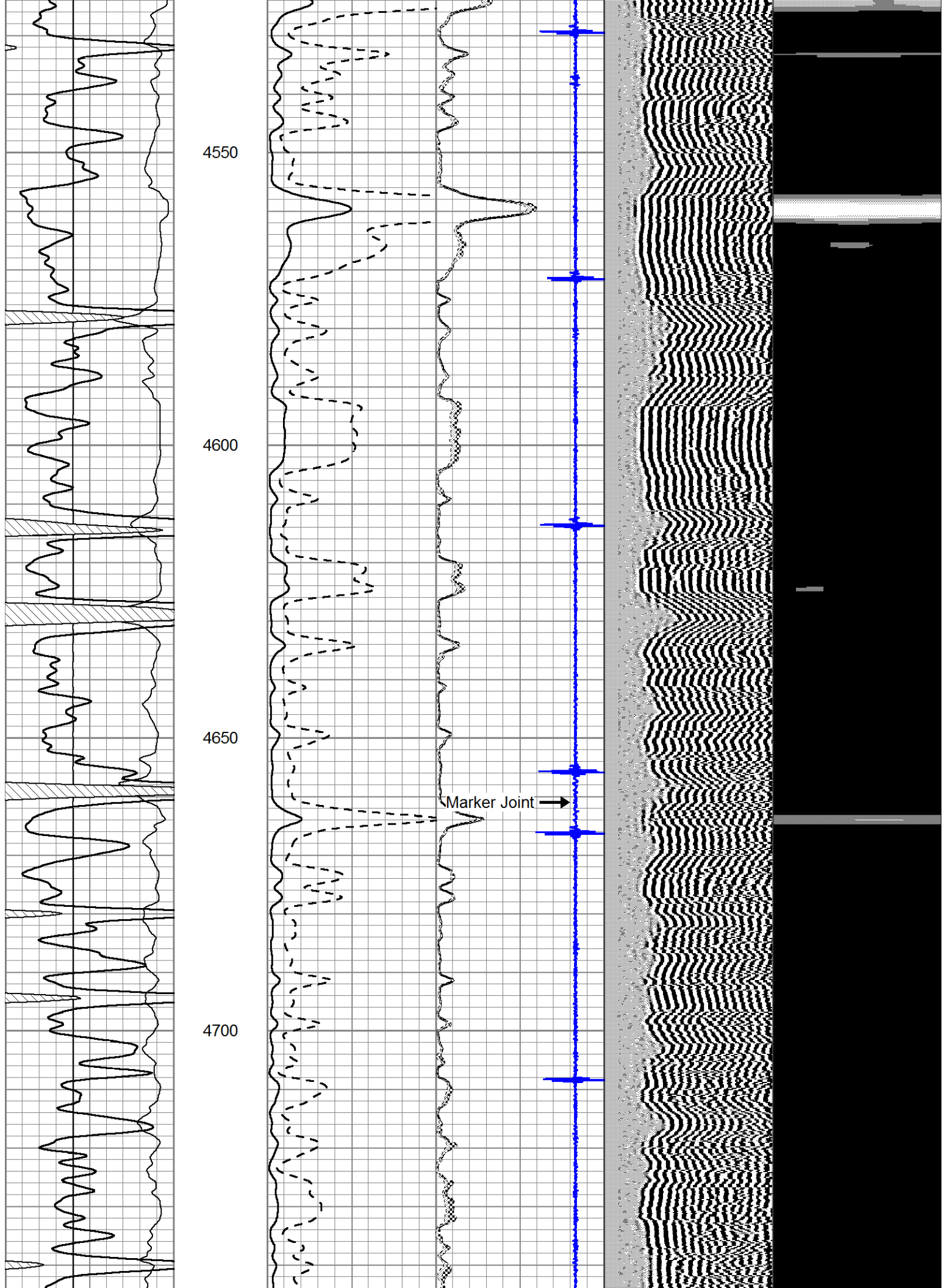
4000

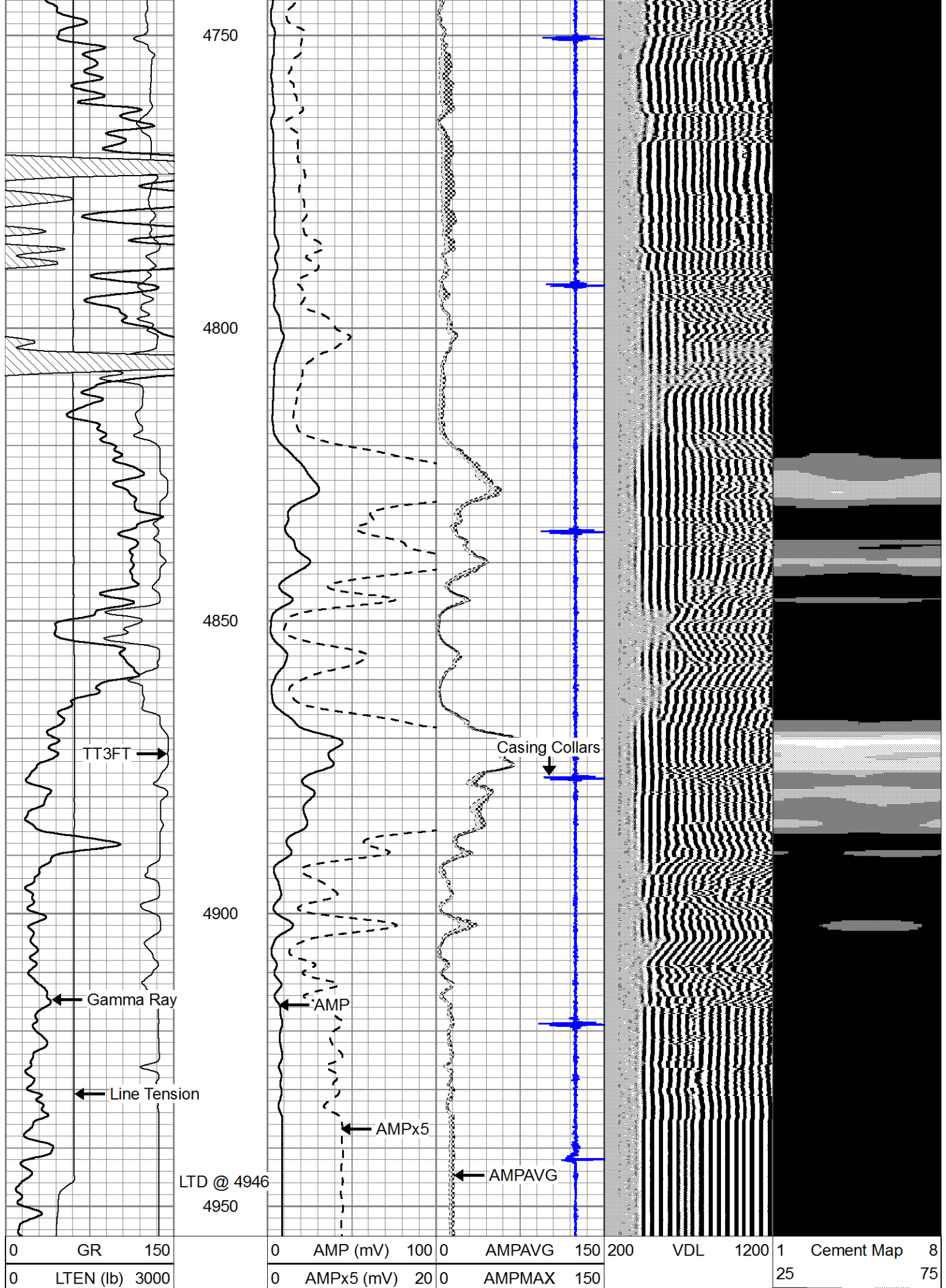
4050











TT3FT		
1200	(usec)	254

0	AMPMIN	150
4	CCL	-0.8



Repeat Section

Database File: landmark_decker_#1-17.db
 Dataset Pathname: pass3
 Presentation Format: scbl02
 Dataset Creation: Thu Apr 04 11:38:24 2013 by Log SCH 111116
 Charted by: Depth in Feet scaled 1:240

0	GR	150
0	LTEN (lb)	3000
TT3FT		
1200	(usec)	254

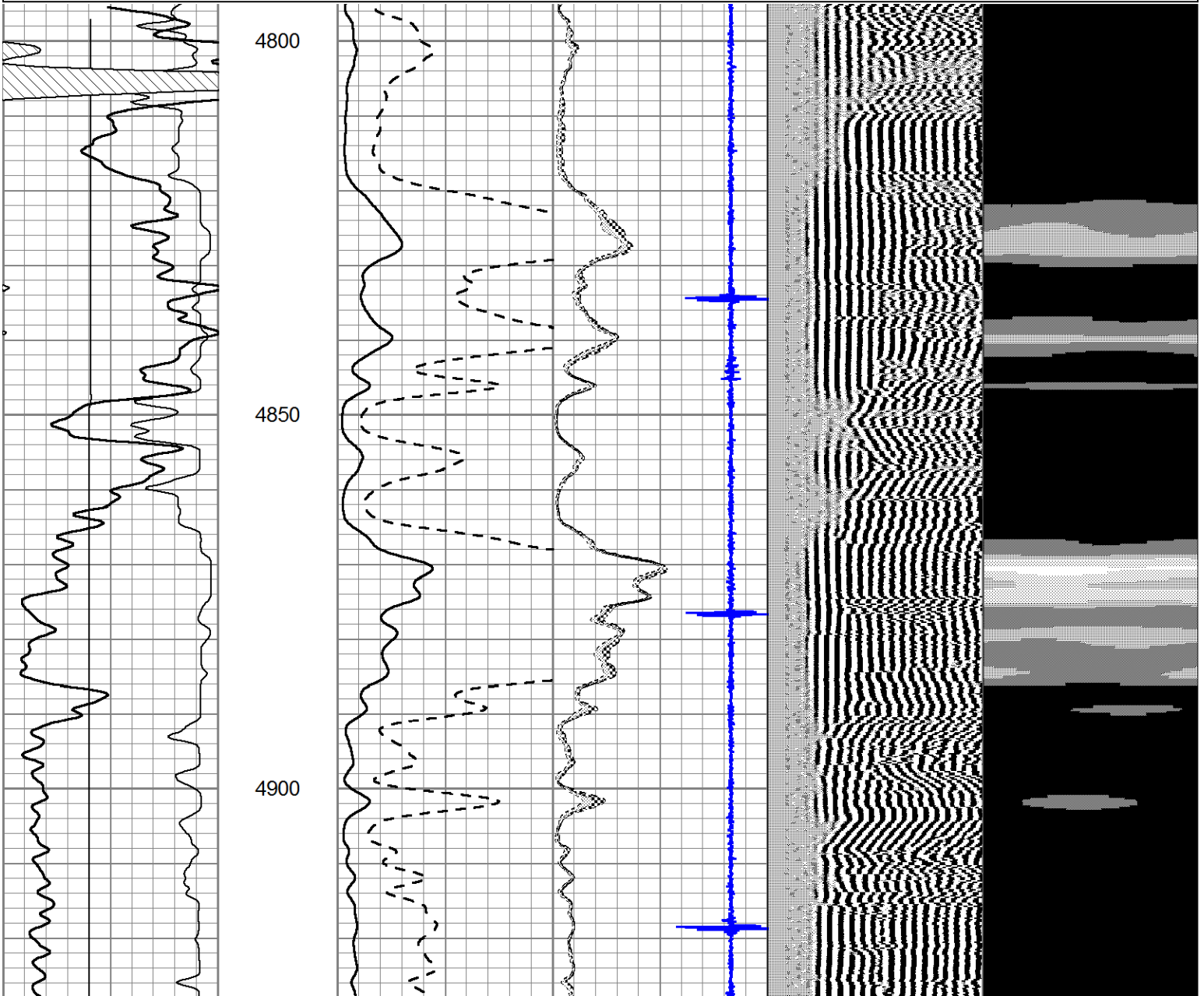
0	AMP (mV)	100
0	AMPx5 (mV)	20

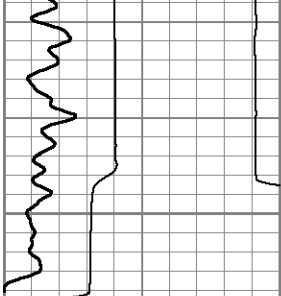
0	AMPMIN	150
4	CCL	-0.8

0	AMPAVG	150
0	AMPMAX	150

0	AMPMIN	150
4	CCL	-0.8

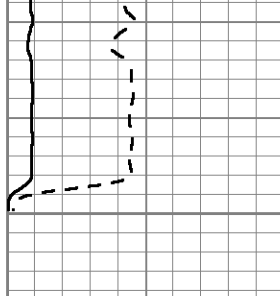
200	VDL	1200	1	Cement Map	8
					75



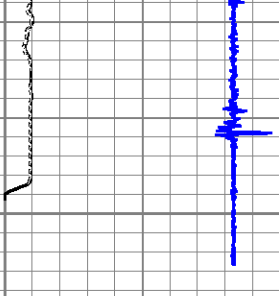


4950

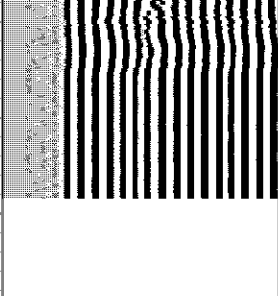
0	GR	150
0	LTEN (lb)	3000
TT3FT		
1200	(usec)	254



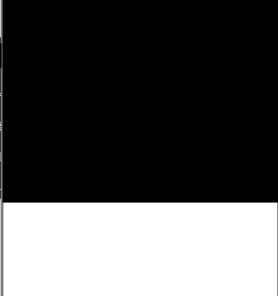
0	AMP (mV)	100
0	AMPx5 (mV)	20



0	AMPAVG	150
0	AMPMAX	150
0	AMPMIN	150
4	CCL	-0.8



200	VDL	1200
-----	-----	------



1	Cement Map	8
25		75

