



Pioneer Energy Services

Dual Compensated Porosity Log

15-171-20,948-00-00

API No.

Company **Landmark Resources, Inc.**
 Well **Sands No. 1 - 11**
 Field **Wildcat**
 County **Scott** State **Kansas**

Location **1998' FSL & 2285' FWL**
 Sec: **11** Twp: **17 S** Rge: **34 W**

Other Services
 DIL
 MEI/BHCS

Permanent Datum **Ground Level** Elevation **3092**
 Log Measured From **Kelly Bushing** **11** Ft. Above Perm. Datum
 Drilling Measured From **Kelly Bushing**

Elevation
 K.B. 3103
 D.F. _____
 G.L. 3092

Date	5/12/2013
Run Number	One
Type Log	CNL / CDL
Depth Driller	4900
Depth Logger	4903
Bottom Logged Interval	4882
Top Logged Interval	3600
Type Fluid In Hole	Chemical
Salinity, PPM CL	9000
Density	9.3
Level	Full
Max. Rec. Temp. F	125
Operating Rig Time	5 1/2 Hours
Equipment -- Location	108 Hays
Recorded By	D. Martin
Witnessed By	Brad Rine

Borehole Record		Casing Record	
Run No.	Bit From To	Size From To	Wgt. From To
One	12.25 00 266	8.625 23# 00	266
Two	7.875 266 TD		

<<< Fold Here >>>

All interpretations are opinions based on inferences from electrical or other measurements and we cannot and do not guarantee the accuracy or correctness of any interpretation, and we shall not, except in the case of gross or willful negligence on our part, be liable or responsible for any loss, costs, damages, or expenses incurred or sustained by anyone resulting from any interpretation made by any of our officers, agents or employees. These interpretations are also subject to our general terms and conditions set out in our current Price Schedule.

Comments

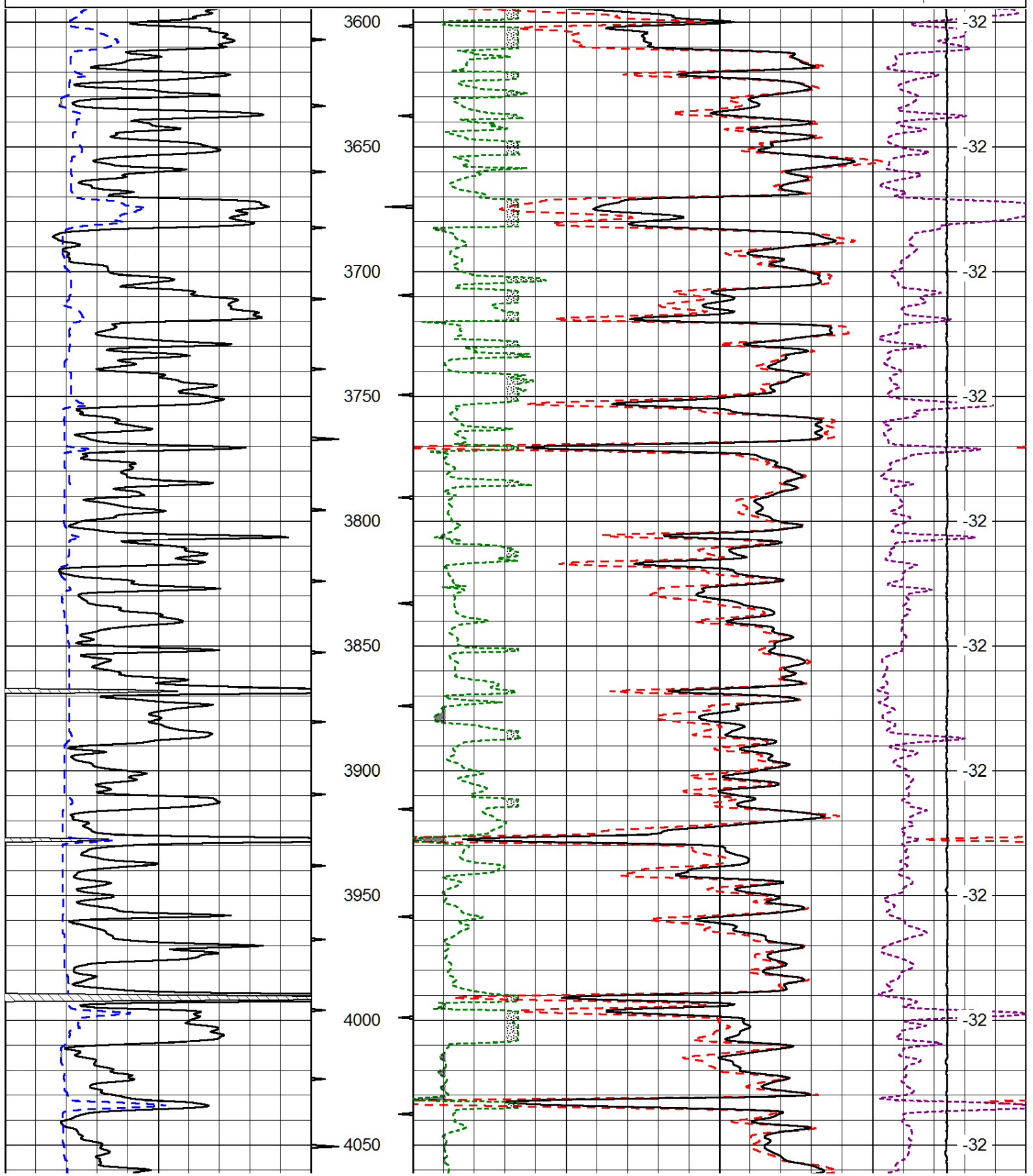
Thank you for using Log-Tech, Inc.
 (785) 625-3858

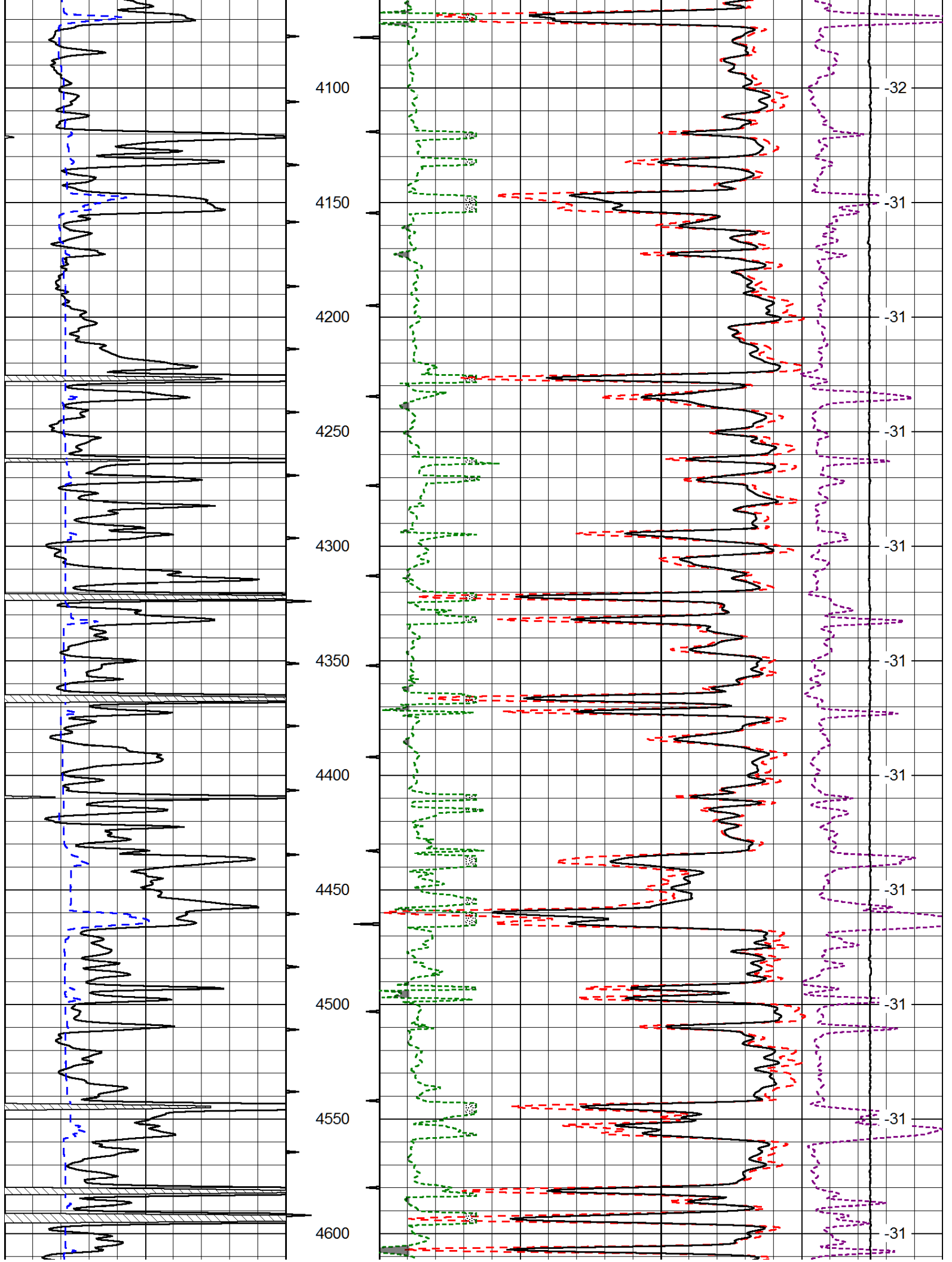
 Modoc, KS
 N to "T", 1/2 E to Cherokee Rd.,
 6 N, E Into(1 1/2 E, 1/2 N, W 1/8)

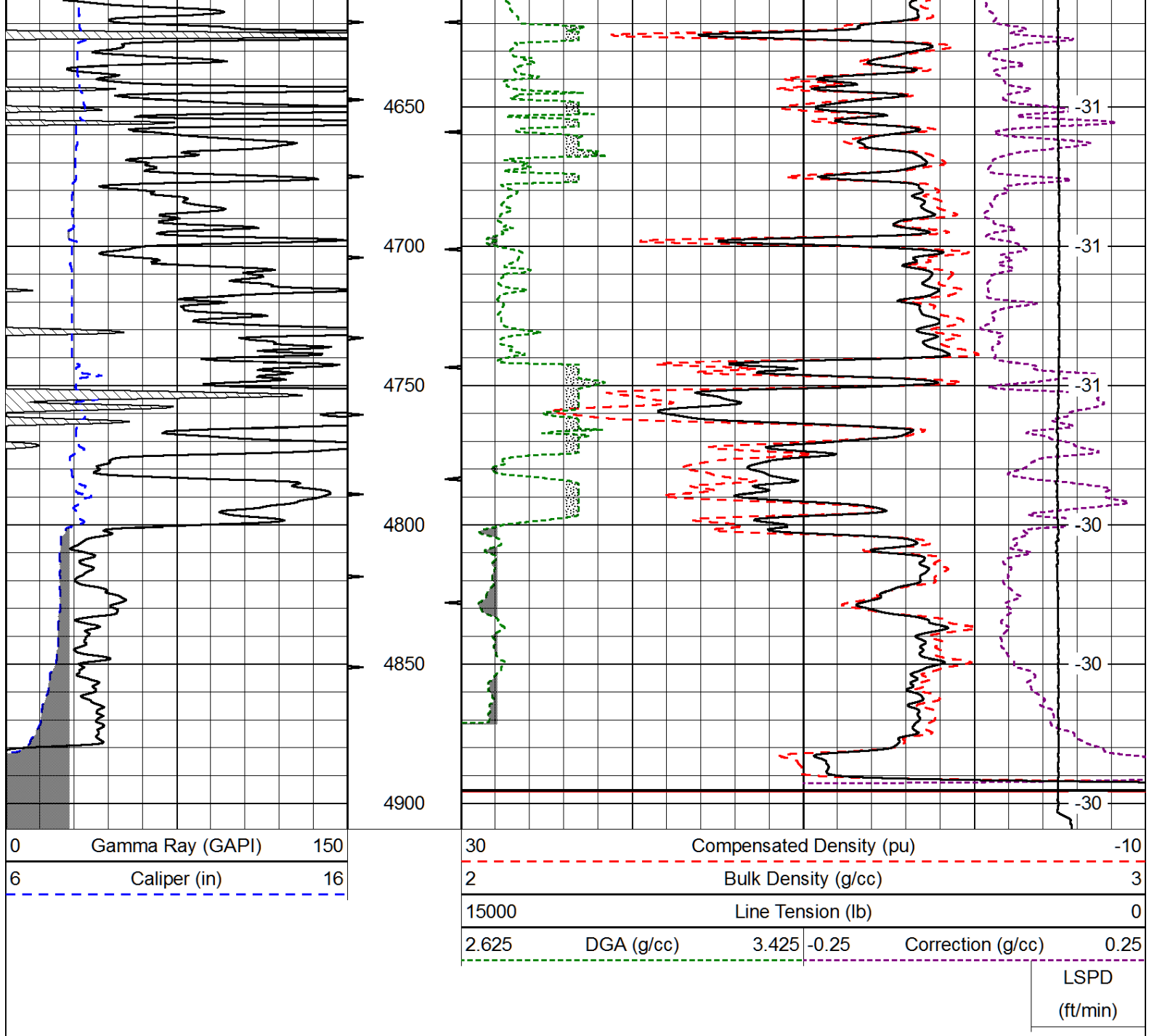
Database File: landmark_sands_1-11hd.db
 Dataset Pathname: dil/landstk
 Presentation Format: cdl
 Dataset Creation: Sun May 12 13:41:18 2013
 Charted by: Depth in Feet scaled 1:600

0	Gamma Ray (GAPI)	150
6	Caliper (in)	16

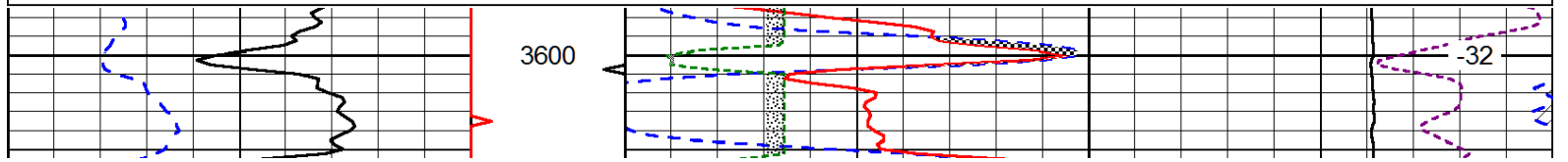
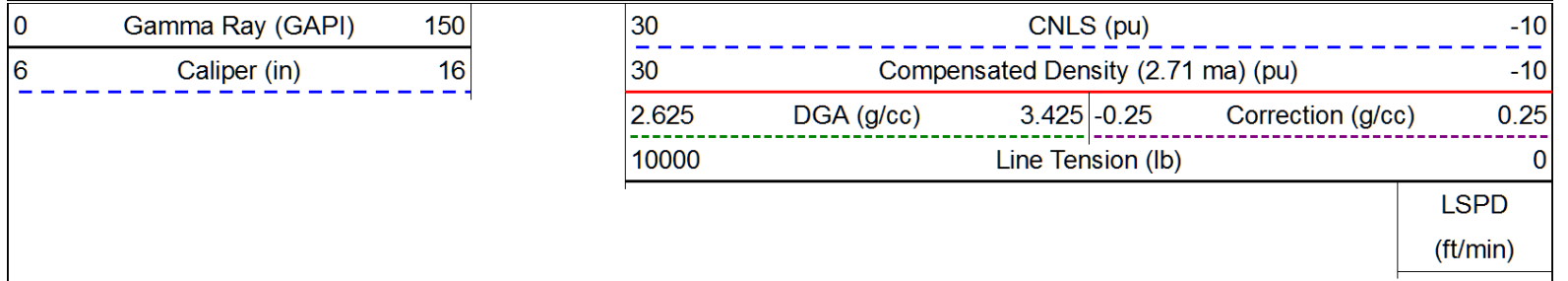
30	Compensated Density (pu)		-10
2	Bulk Density (g/cc)		3
15000	Line Tension (lb)		0
2.625	DGA (g/cc)	3.425	-0.25
	Correction (g/cc)		0.25
	LSPD (ft/min)		

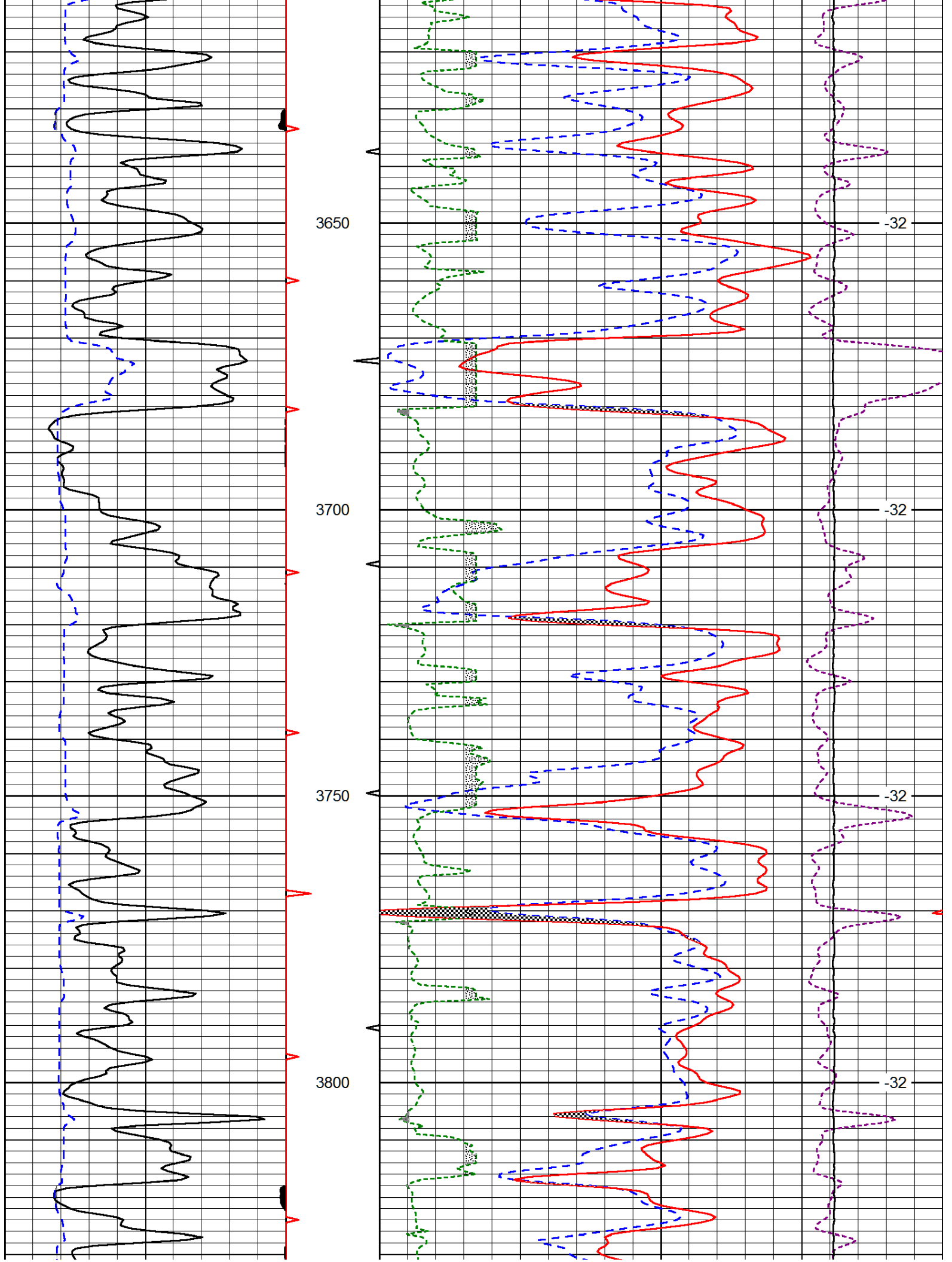


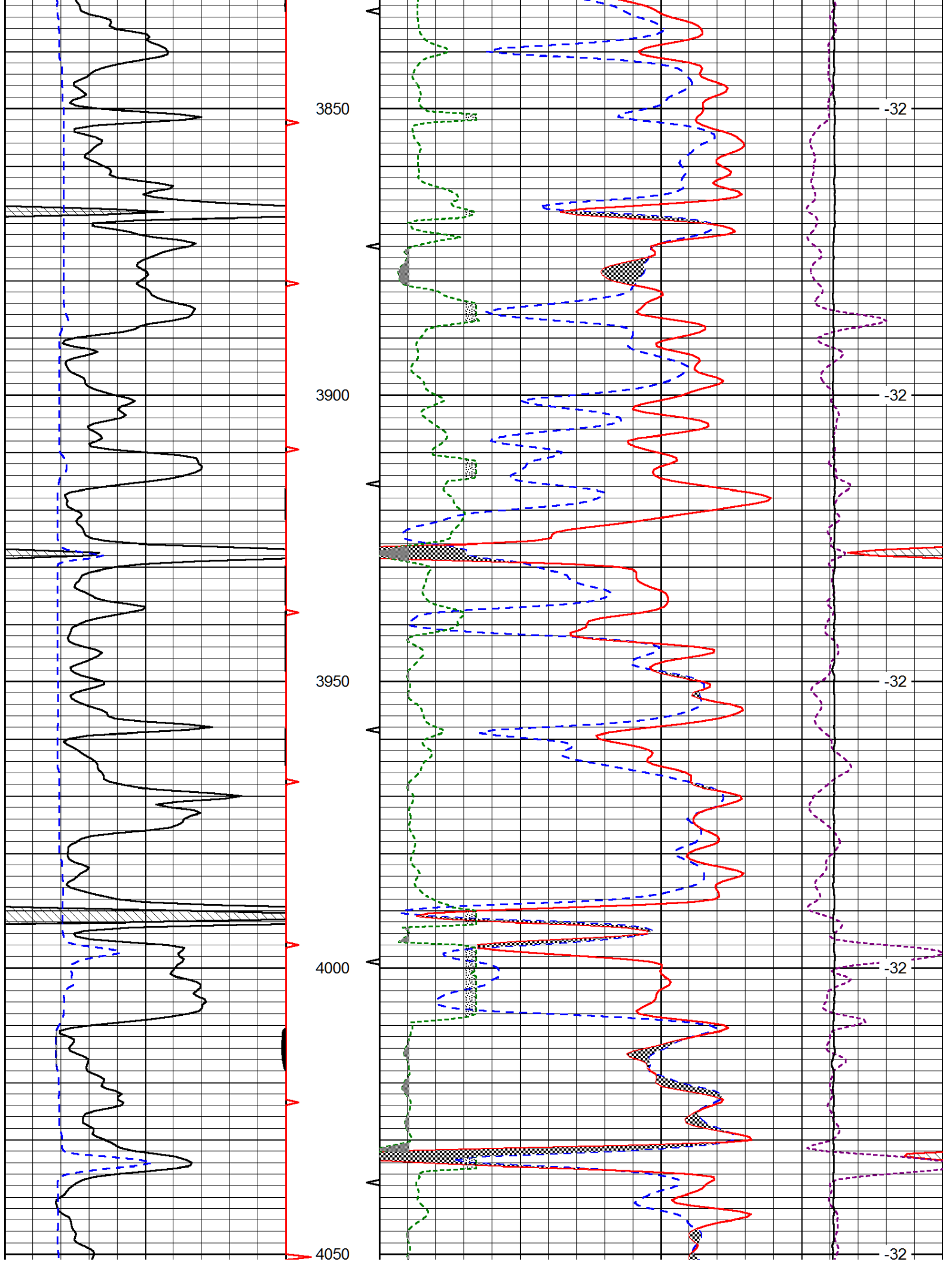


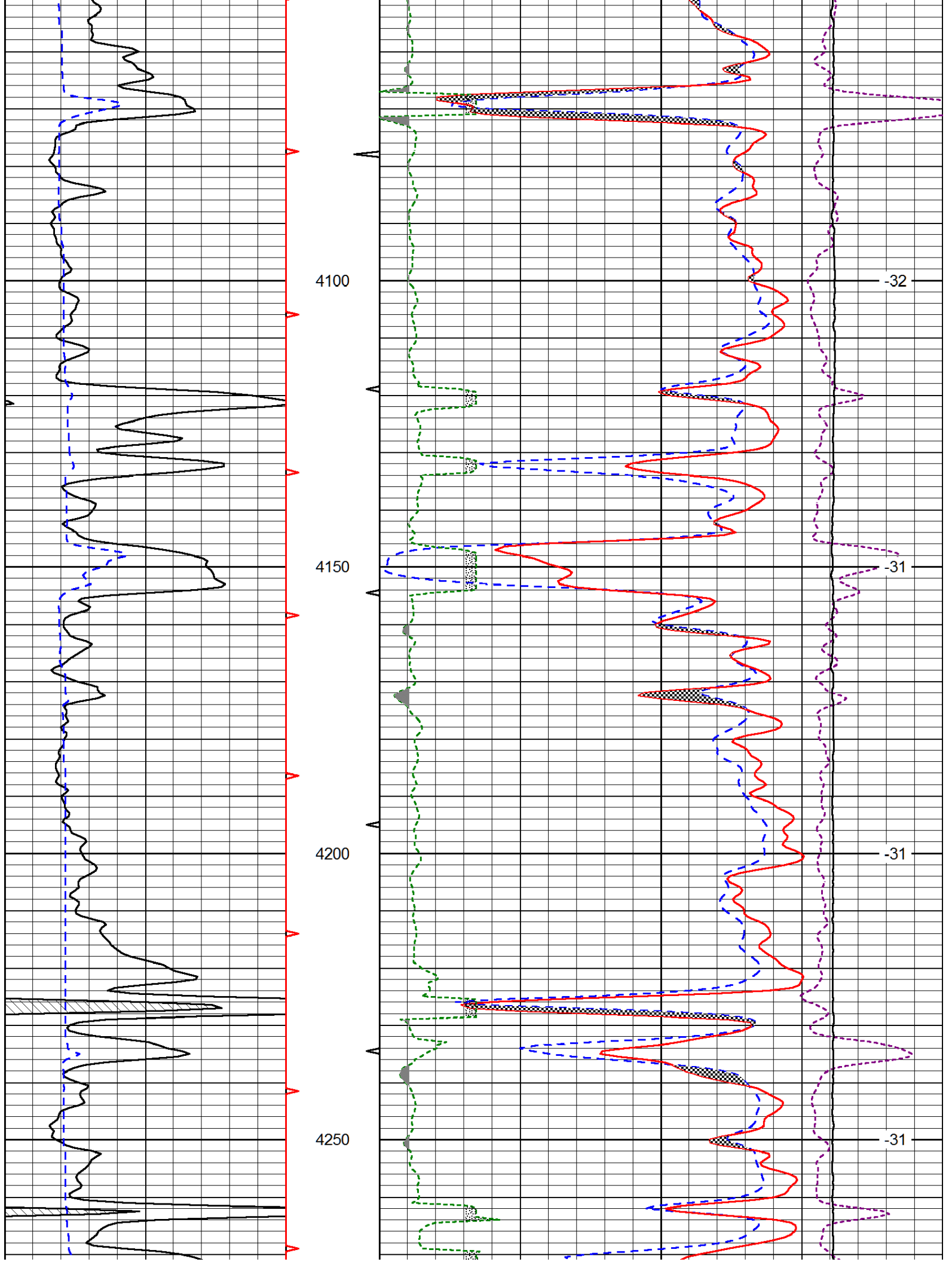


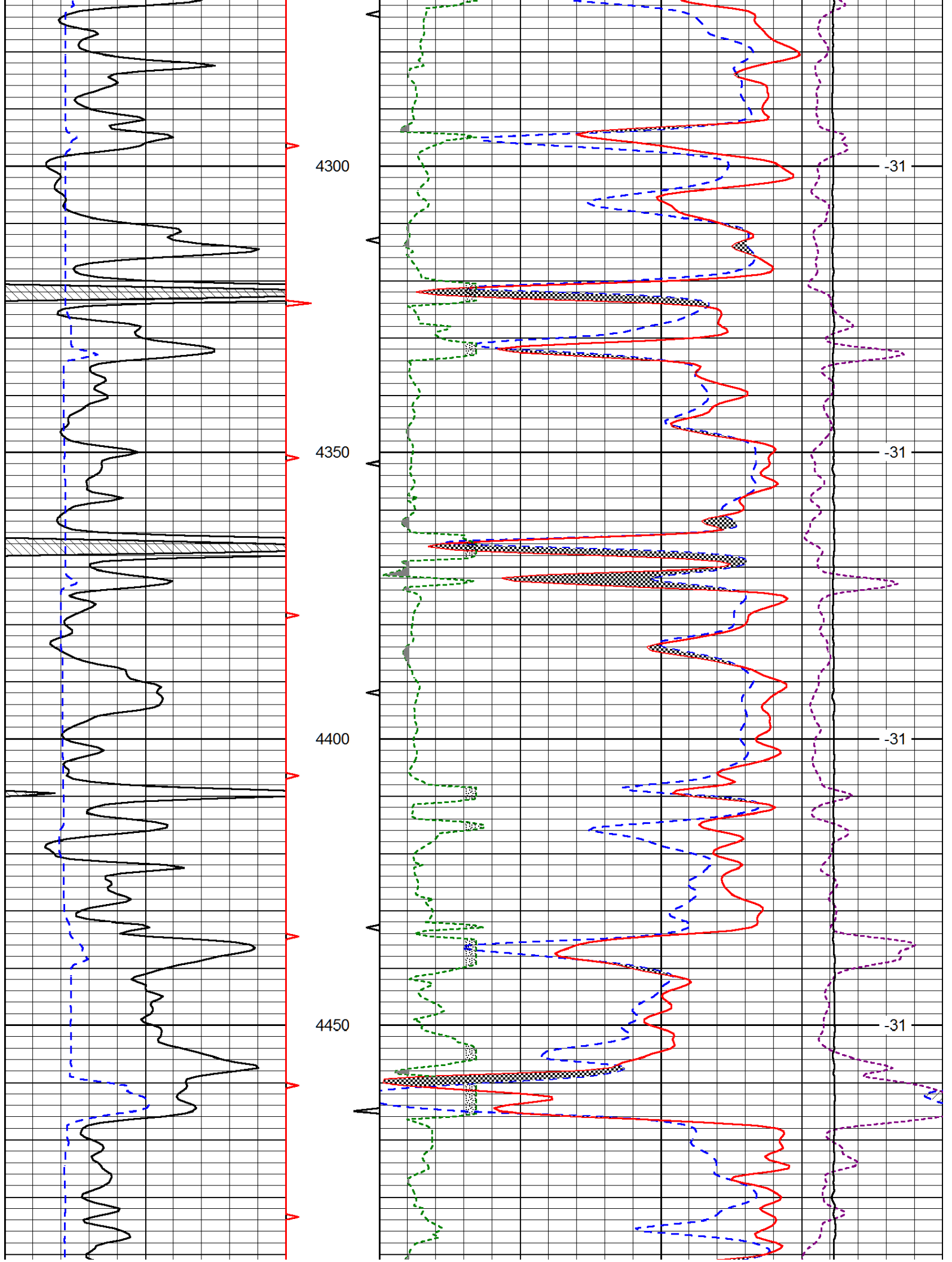
Database File: landmark_sands_1-11hd.db
 Dataset Pathname: dil/landstk
 Presentation Format: cndlspec
 Dataset Creation: Sun May 12 13:41:18 2013
 Charted by: Depth in Feet scaled 1:240

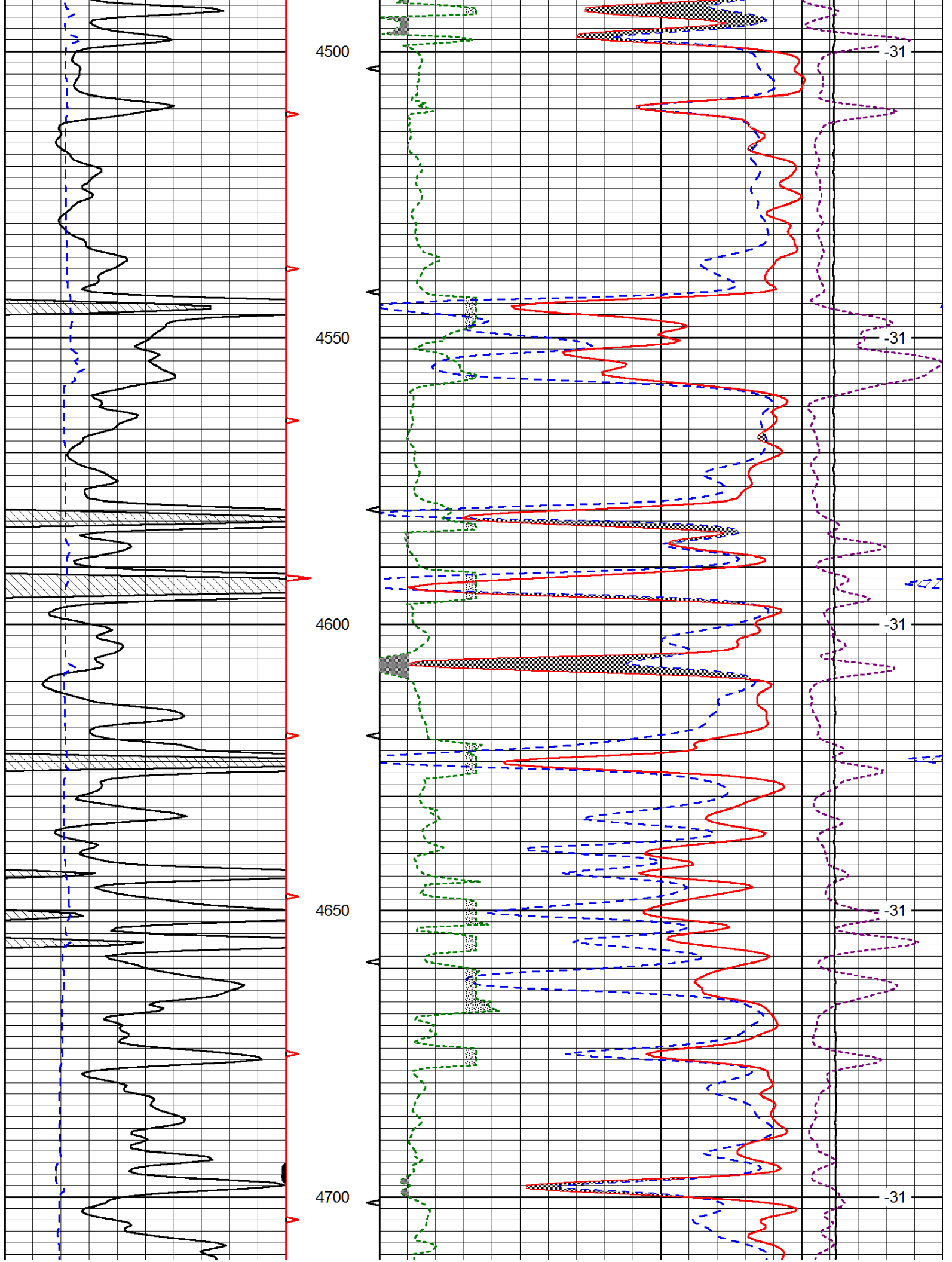


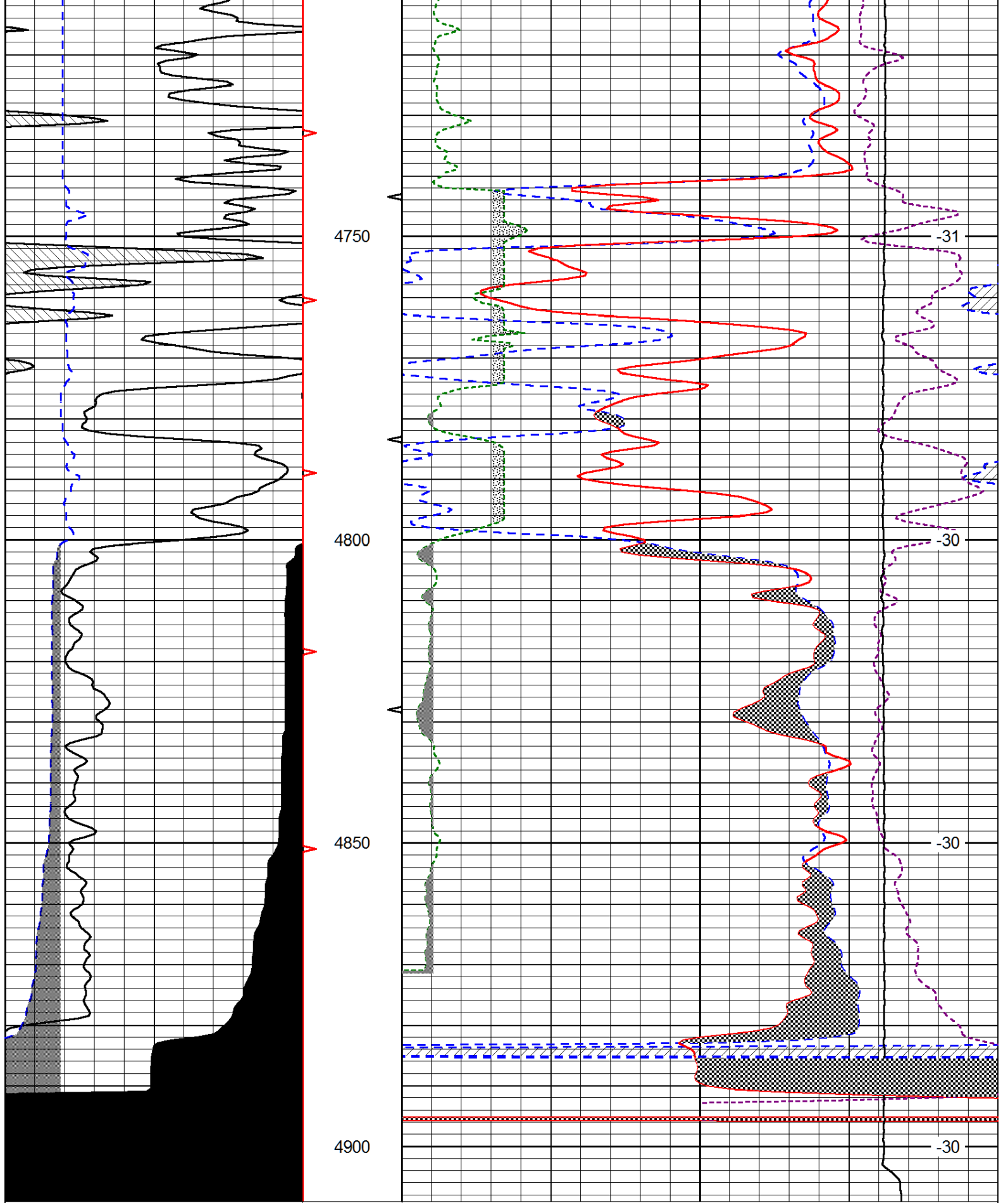












0	Gamma Ray (GAPI)	150	30	CNLS (pu)	-10
6	Caliper (in)	16	30	Compensated Density (2.71 ma) (pu)	-10
			2.625	DGA (g/cc)	3.425
			-0.25	Correction (g/cc)	0.25
			10000	Line Tension (lb)	0

