



Pioneer Energy Services

Microresistivity Log

Company Landmark Resources, Inc.
Well Sands No. 1 - 11
Field Wildcat
County Scott **State** Kansas
Location 1998' FSL & 2285' FWL
Sec: 11 **Twp:** 17 S **Rge:** 34 W
Other Services
 CNL/CDL
 DIL/BHCS

API No. 15-171-20,948-00-00
Permanent Datum Ground Level **Elevation** 3092
Log Measured From Kelly Bushing **11 Ft. Above Perm. Datum**
Drilling Measured From Kelly Bushing
Elevation
 K.B. 3103
 D.F. G.L. 3092

Date	5/12/2013
Run Number	Two
Depth Driller	4900
Depth Logger	4903
Bottom Logged Interval	4902
Top Log Interval	3600
Casing Driller	8.625 @ 266
Casing Logger	263
Bit Size	7.875
Type Fluid in Hole	Chemical
Salinity, ppm CL	9000
Density / Viscosity	9.3 64
pH / Fluid Loss	9.0 10.4
Source of Sample	Flowline
Rm @ Meas. Temp	.32 @ 67
Rmf @ Meas. Temp	.24 @ 67
Rmc @ Meas. Temp	.43 @ 67
Source of Rmf / Rmc	Charts
Rm @ BHT	.17 @ 125
Operating Rig Time	5 1/2 Hours
Max Rec. Temp. F	125
Equipment Number	108
Location	Hays
Recorded By	D. Martin
Witnessed By	Brad Rine

<<< Fold Here >>>

All interpretations are opinions based on inferences from electrical or other measurements and we cannot and do not guarantee the accuracy or correctness of any interpretation, and we shall not, except in the case of gross or willful negligence on our part, be liable or responsible for any loss, costs, damages, or expenses incurred or sustained by anyone resulting from any interpretation made by any of our officers, agents or employees. These interpretations are also subject to our general terms and conditions set out in our current Price Schedule.

Comments

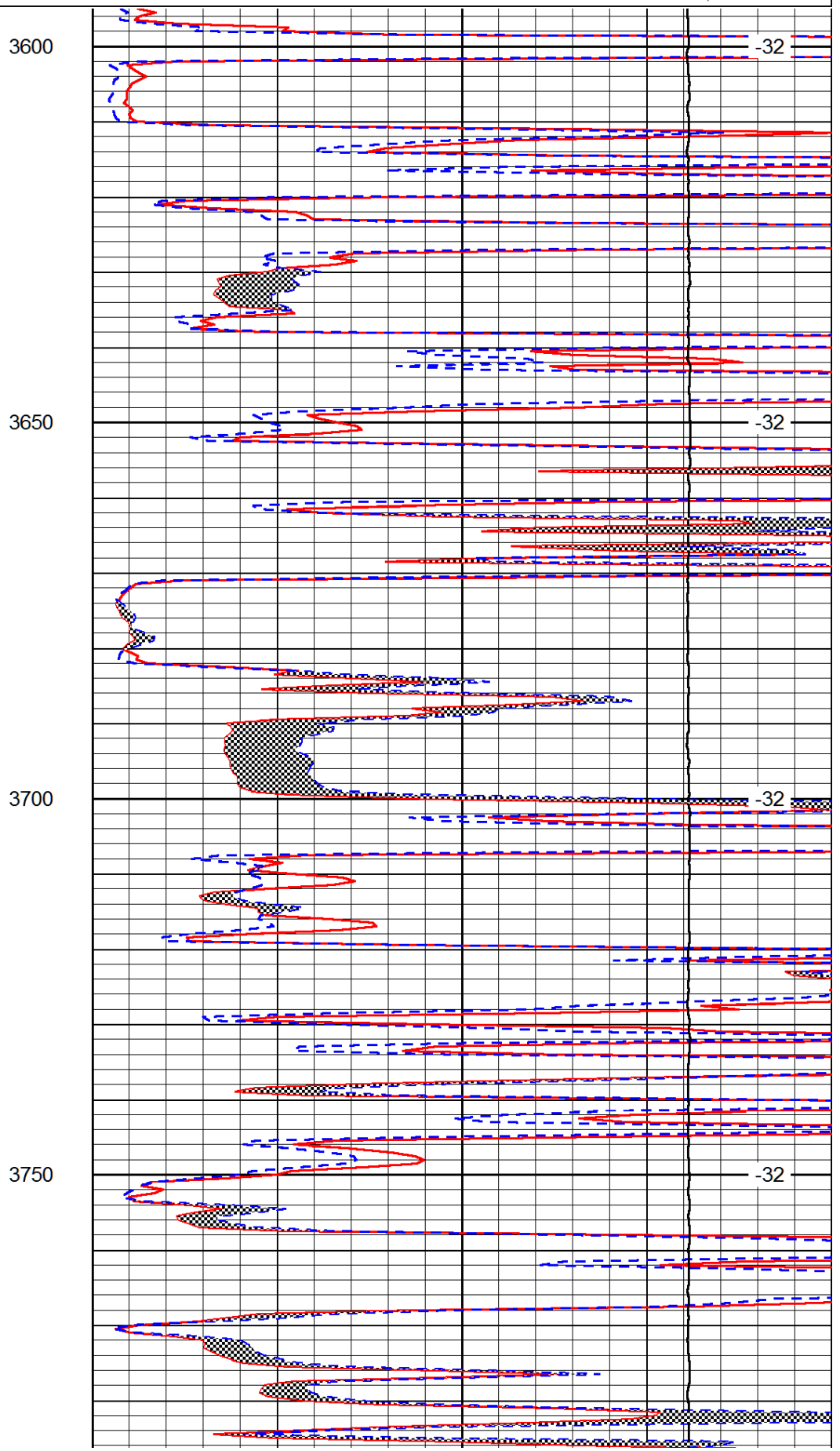
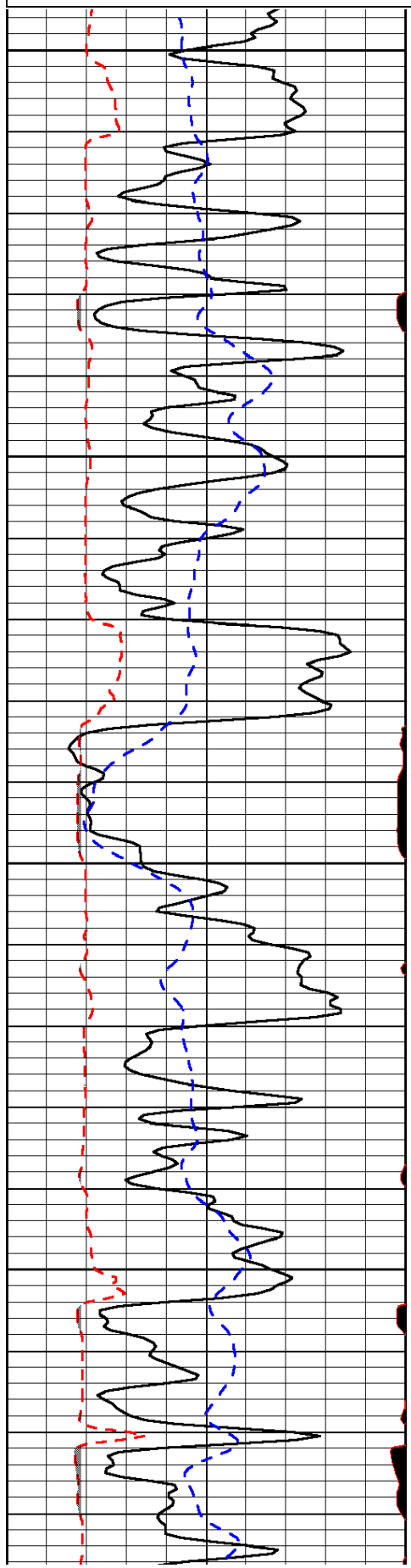
Thank you for using Log-Tech, Inc.
 (785) 625-3858

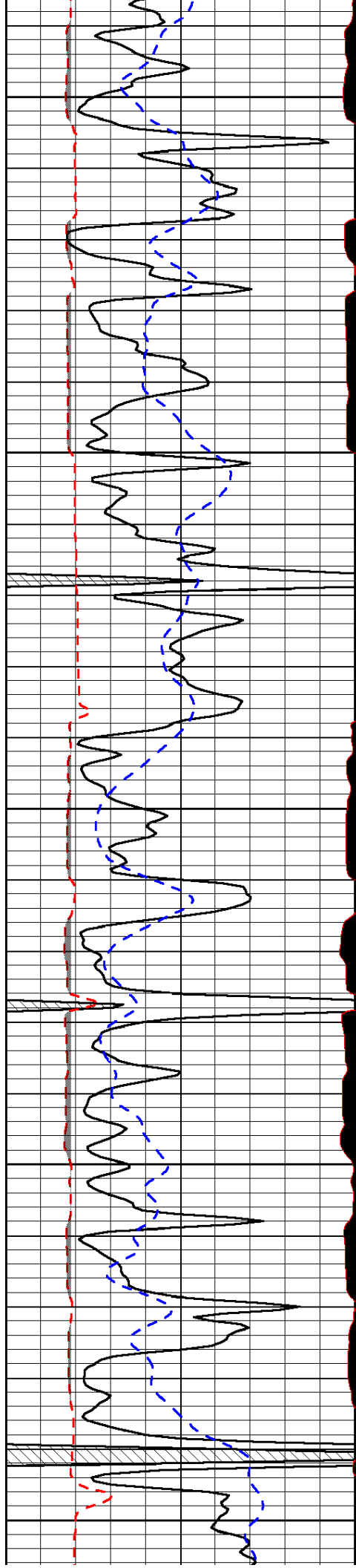
 Modoc, KS
 N to "T", 1/2 E to Cherokee Rd.,
 6 N, E Into(1 1/2 E, 1/2 N, W 1/8)

Database File: landmark_sands_1-11hd.db
 Dataset Pathname: dil/landstk
 Presentation Format: micro
 Dataset Creation: Sun May 12 13:41:18 2013
 Charted by: Depth in Feet scaled 1:240

0	Gamma Ray (GAPI)	150
6	MCAL (in)	16
2.875	Mud Cake (in)	7.875
-200	SP (mV)	0

0	Micro Inverse 1 X 1 (Ohm-m)	40
0	Micro Normal 2" (Ohm-m)	40
10000	Line Weight (lb)	0
	LSPD (ft/min)	





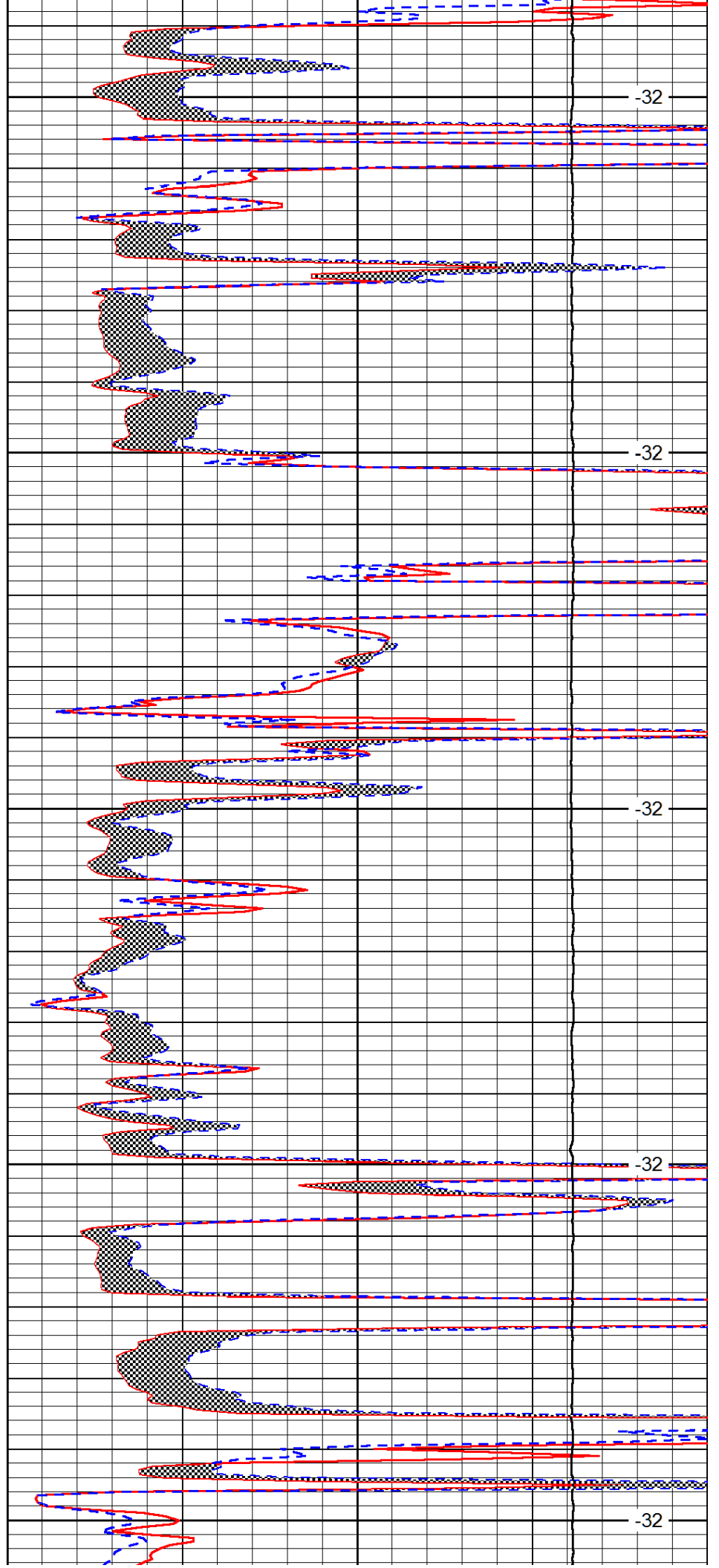
3800

3850

3900

3950

4000



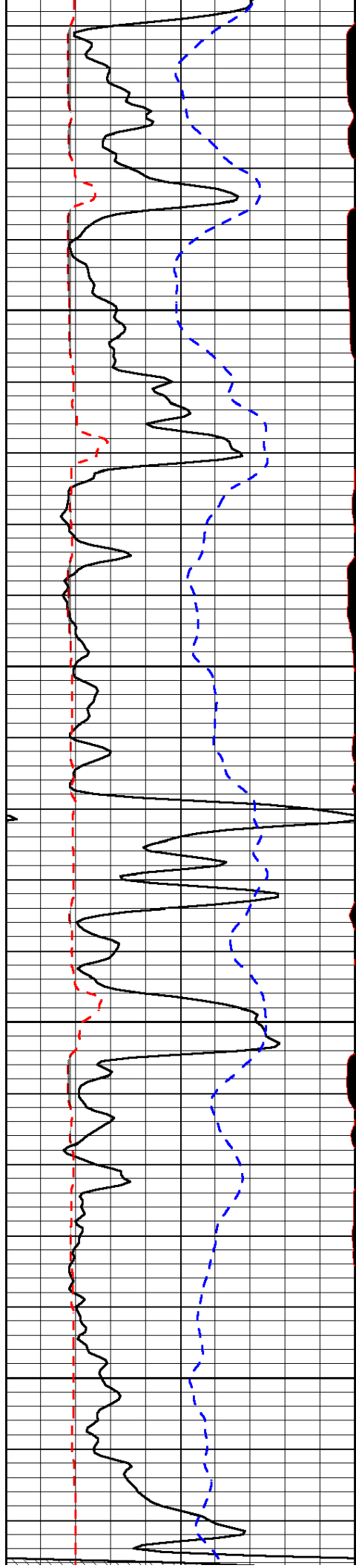
-32

-32

-32

-32

-32

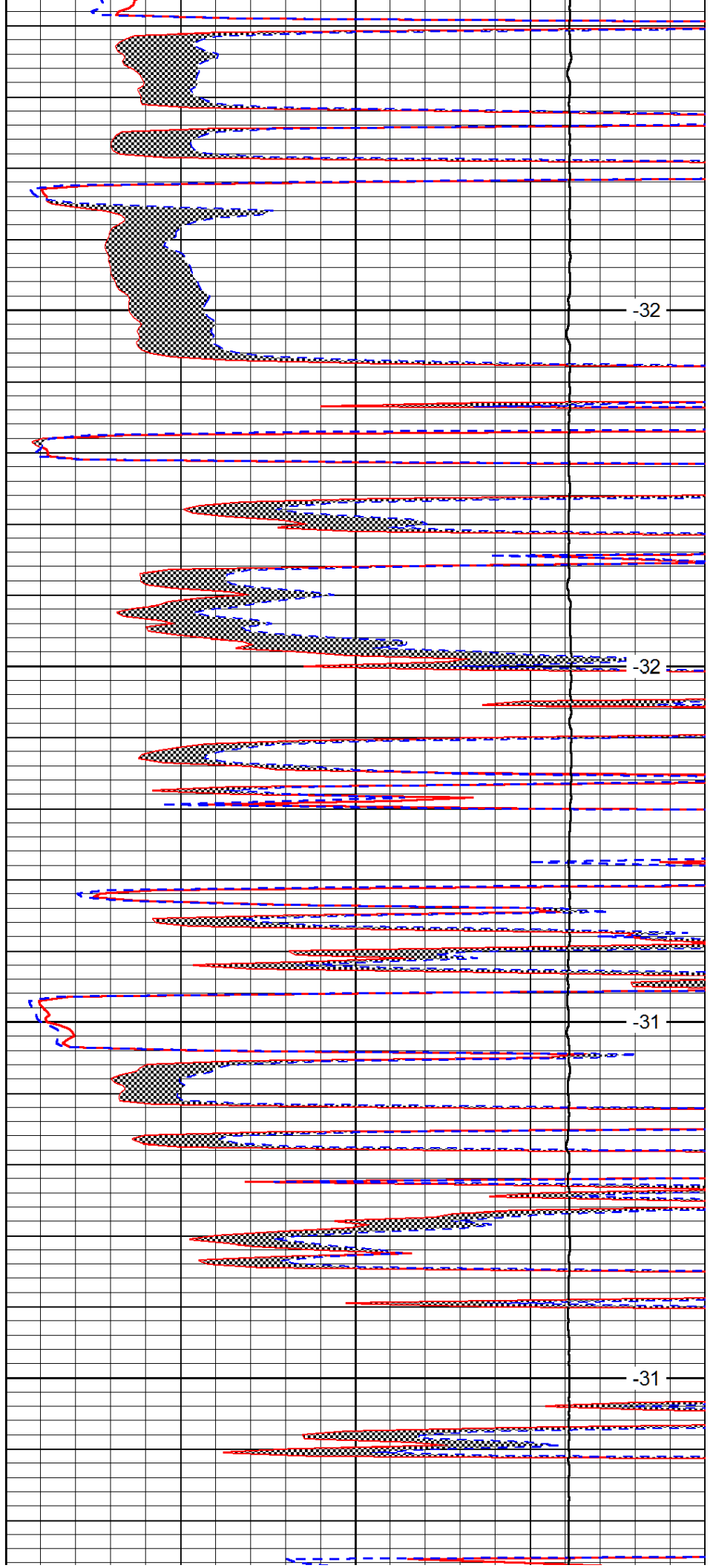


4050

4100

4150

4200

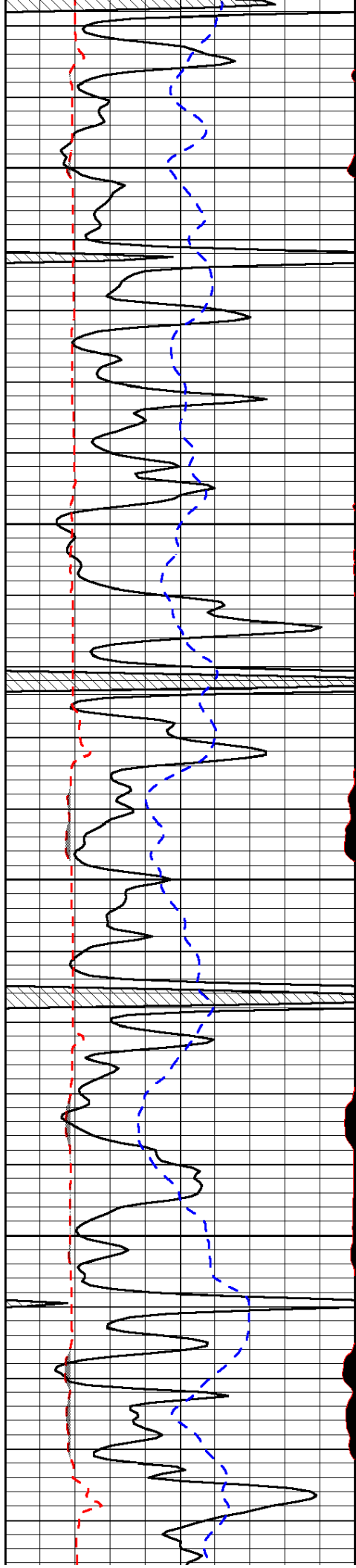


-32

-32

-31

-31

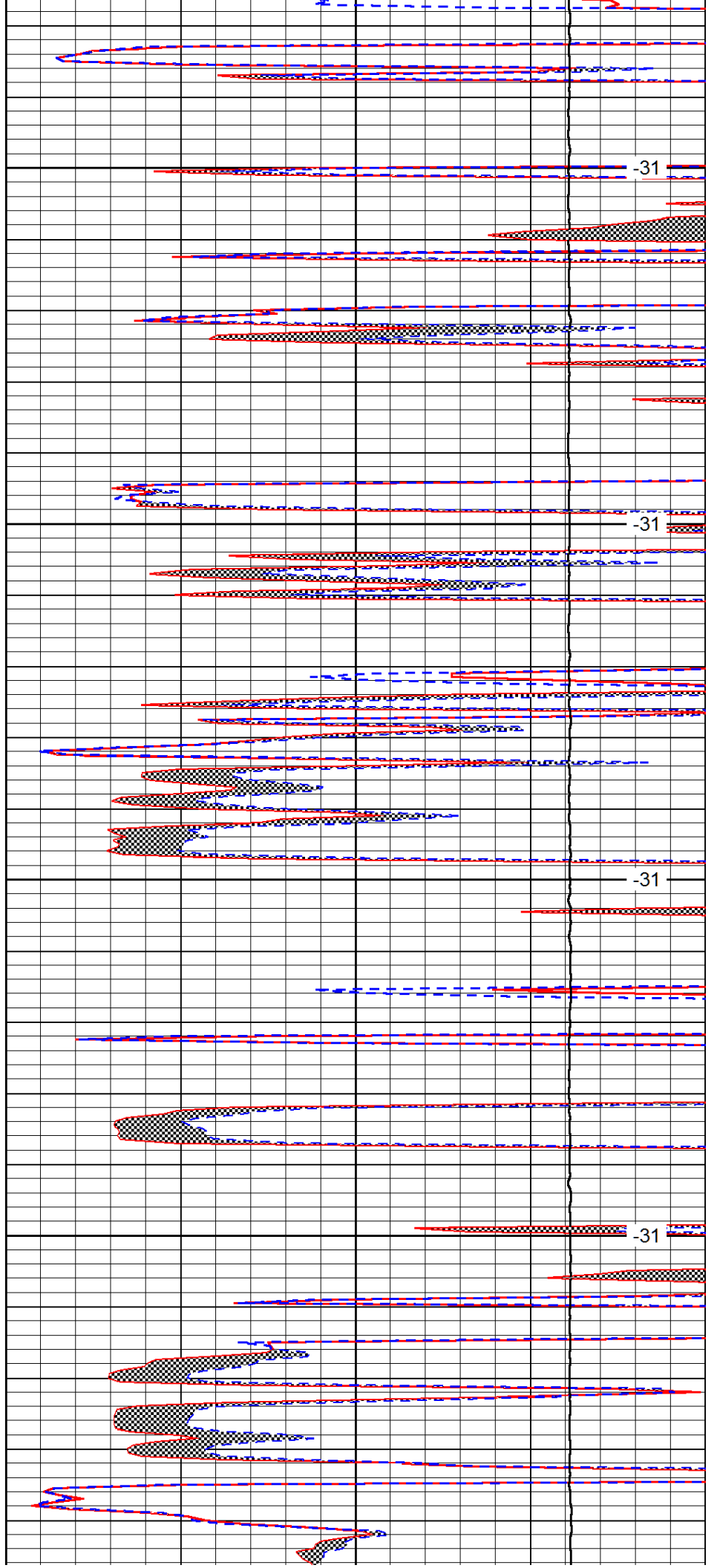


4250

4300

4350

4400

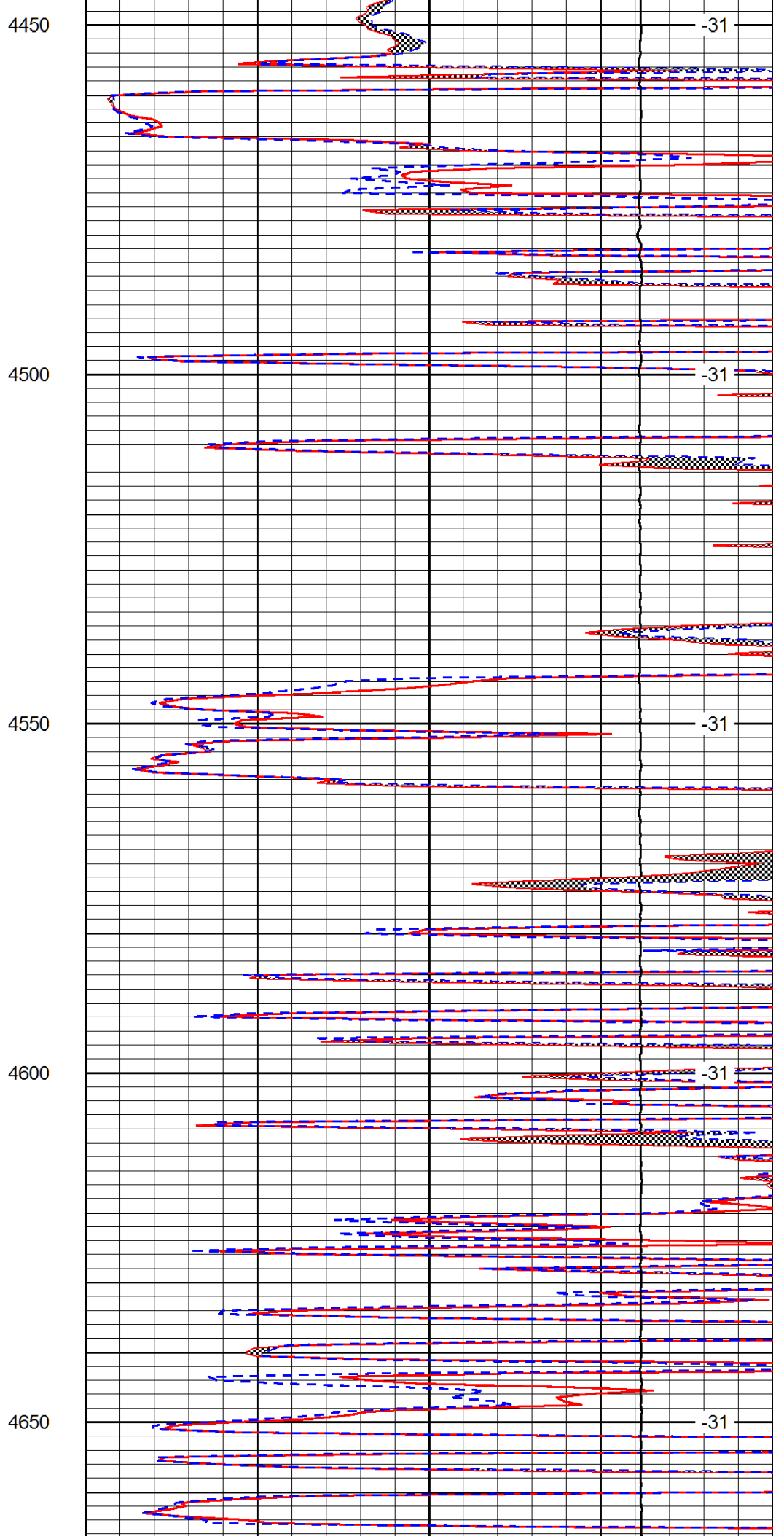
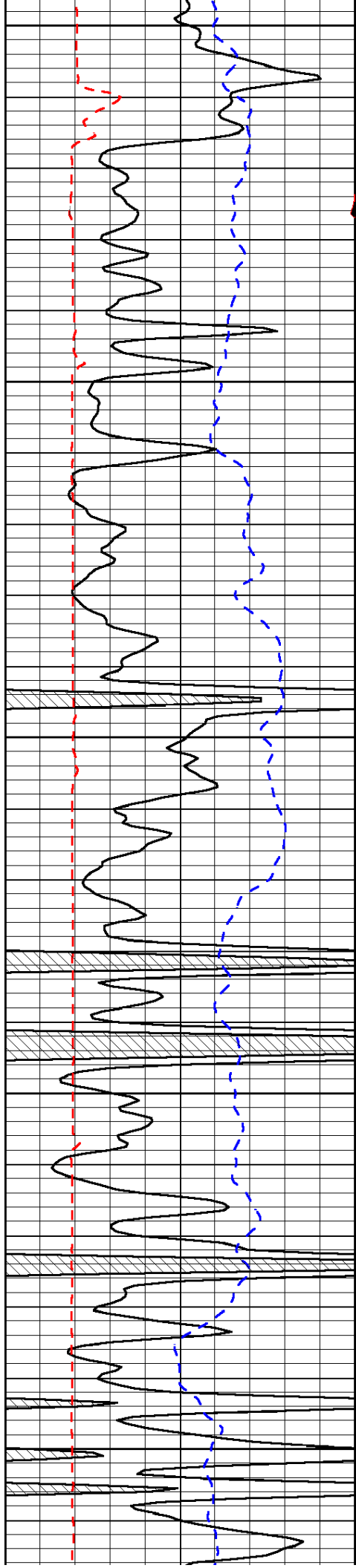


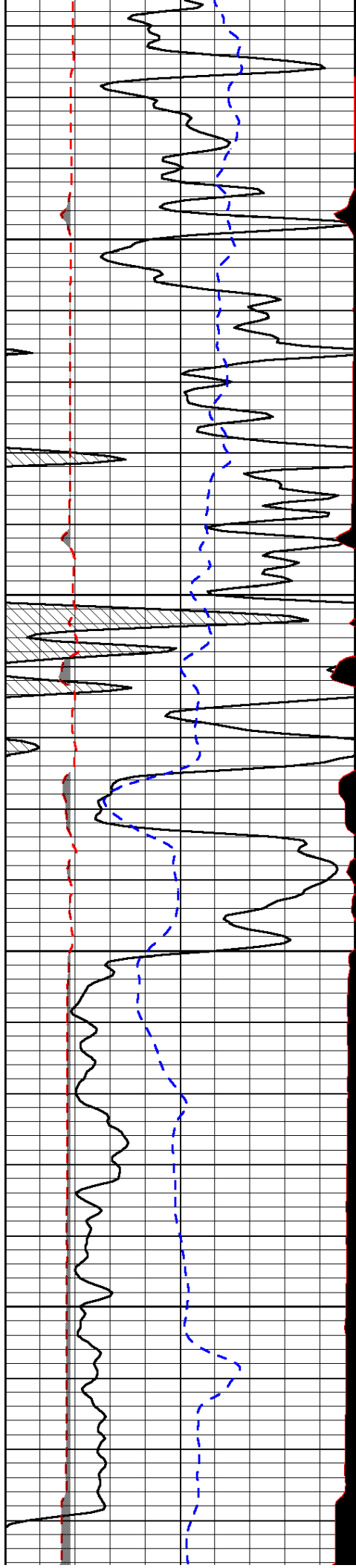
-31

-31

-31

-31



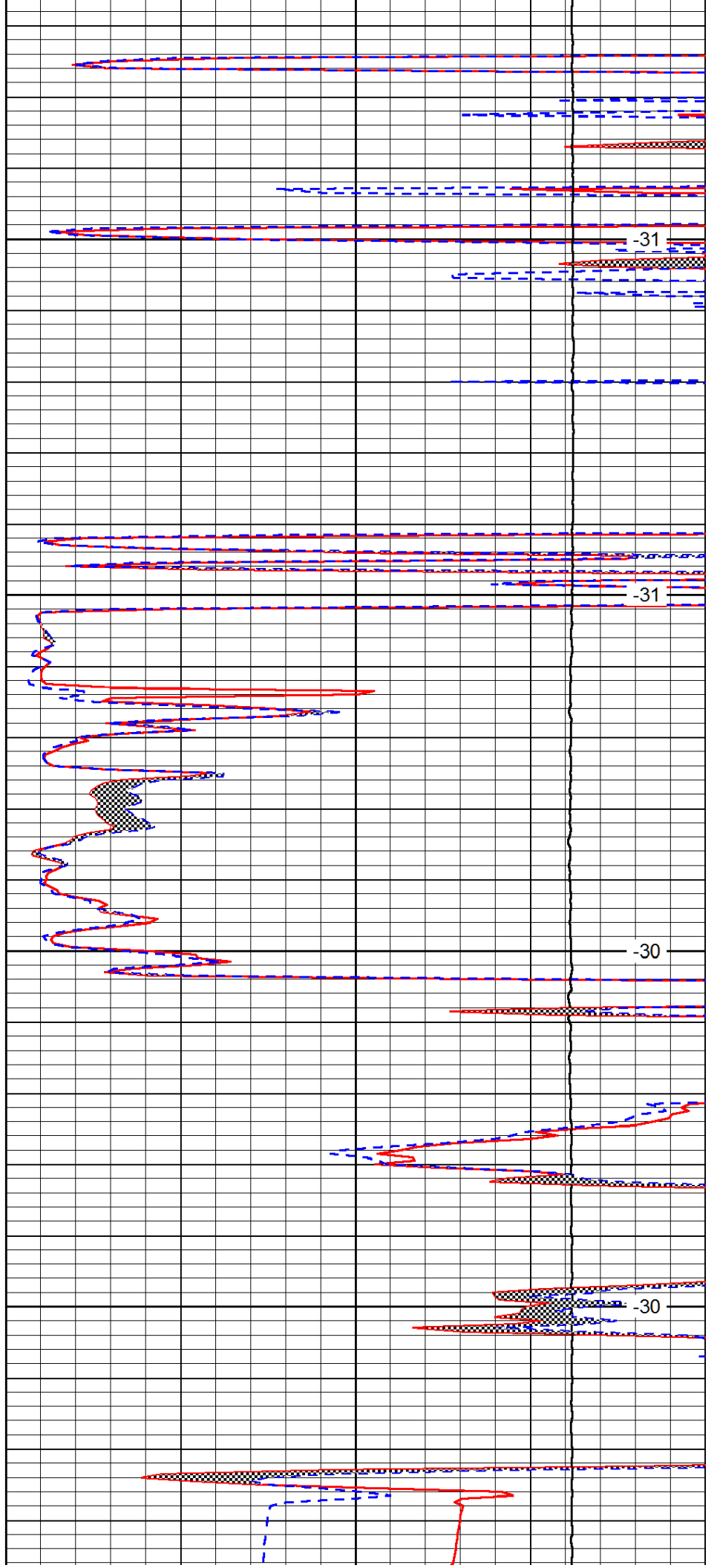


4700

4750

4800

4850



-31

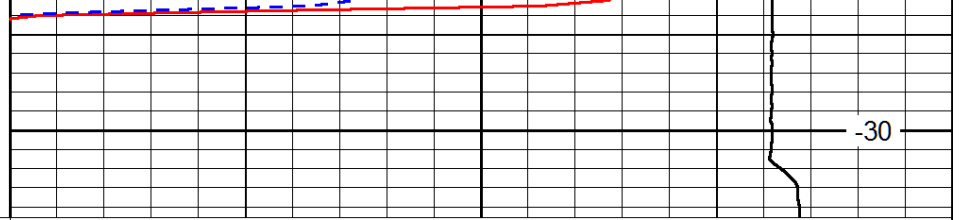
-31

-30

-30



4900



0	Gamma Ray (GAPI)	150
6	MCAL (in)	16
2.875	Mud Cake (in)	7.875
-200	SP (mV)	0

0	Micro Inverse 1 X 1 (Ohm-m)	40
0	Micro Normal 2" (Ohm-m)	40
10000	Line Weight (lb)	0

LSPD (ft/min)
