



Pioneer Energy Services

Microresistivity Log

15-051-26,491-00-00

API No.

Company **Murfin Drilling Company, Inc.**

Well **Legleiter No. 1 - 36**

Field **Zimm Southeast**

County **Elis** State **Kansas**

Location **600' FSL & 700' FEL**

Sec: **36** Twp: **15 S** Rge: **19 W**

Other Services
CNL/CDL
DIL/BHCS

Permanent Datum **Ground Level** Elevation **1988**

Log Measured From **Kelly Bushing** 5 Ft. Above Perm. Datum

Elevation
K.B. 1993
D.F. 1988
G.L. 1988

Drilling Measured From **Kelly Bushing**

Date **3/17/2013**

Run Number **Two**

Depth Driller **3680**

Depth Logger **3680**

Bottom Logged Interval **3679**

Top Log Interval **2850**

Casing Driller **8.625 @ 965**

Casing Logger **962**

Bit Size **7.875**

Type Fluid in Hole **Chemical**

Salinity, ppm CL **1000**

Density / Viscosity **9.2 | 56**

pH / Fluid Loss **10.5 | 6.8**

Source of Sample **Flowline**

Rm @ Meas. Temp **.25 @ 58**

Rmf @ Meas. Temp **.19 @ 58**

Rmc @ Meas. Temp **.34 @ 58**

Source of Rmf / Rmc **Charts**

Rm @ BHT **.13 @ 113**

Operating Rig Time **4 1/2 Hours**

Max Rec. Temp. F **113**

Equipment Number **108**

Location **Hays**

Recorded By **D. Martin**

Witnessed By **Rocky Milford**

<<< Fold Here >>>

All interpretations are opinions based on inferences from electrical or other measurements and we cannot and do not guarantee the accuracy or correctness of any interpretation, and we shall not, except in the case of gross or willful negligence on our part, be liable or responsible for any loss, costs, damages, or expenses incurred or sustained by anyone resulting from any interpretation made by any of our officers, agents or employees. These interpretations are also subject to our general terms and conditions set out in our current Price Schedule.

Comments

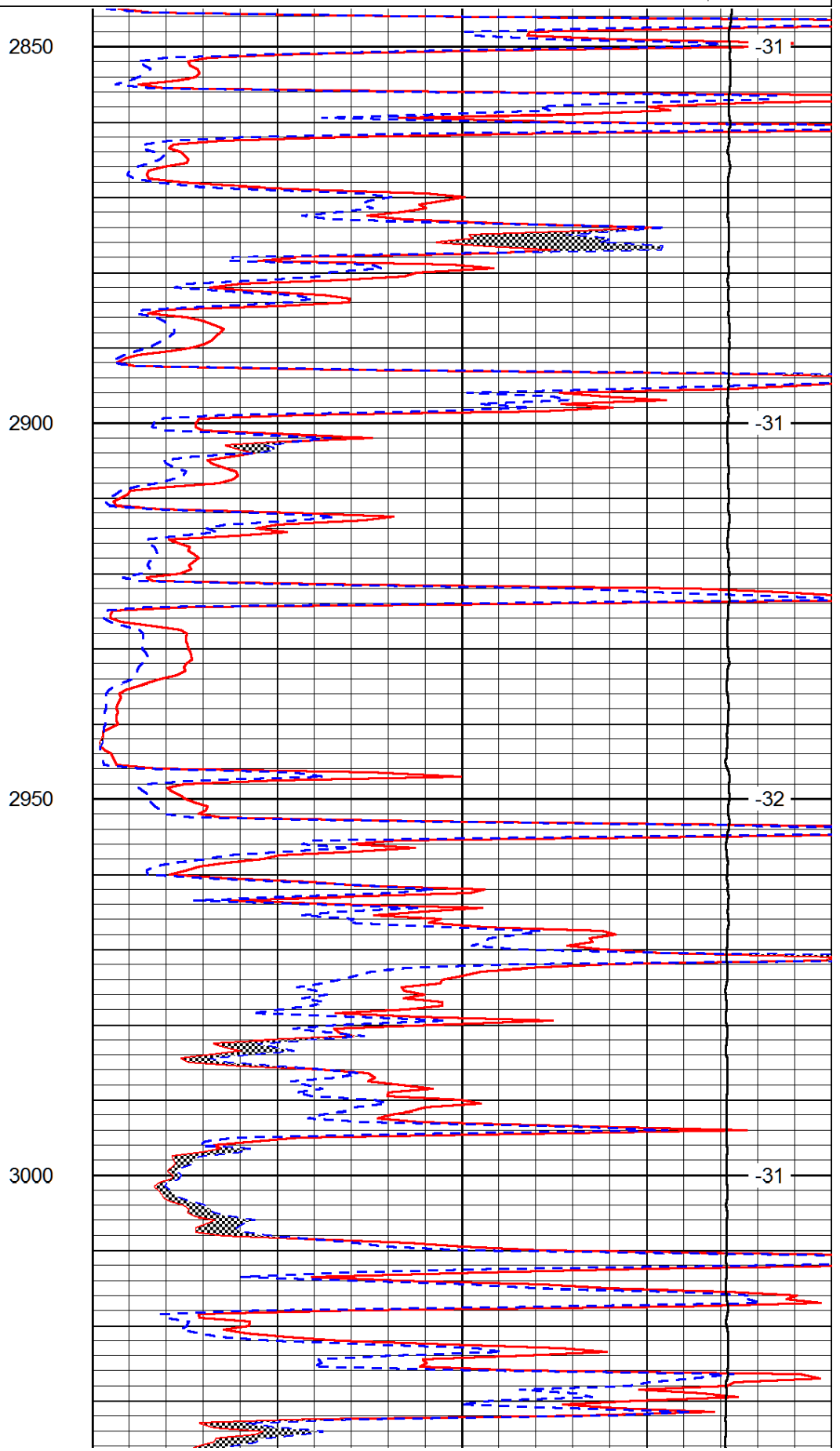
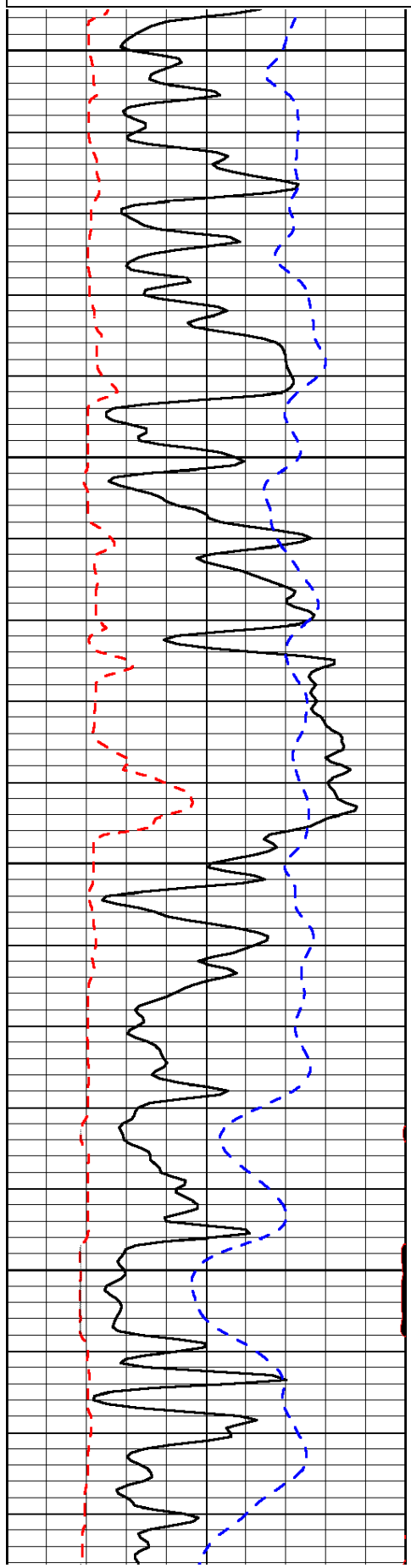
Thank you for using Log-Tech, Inc.
(785) 625-3858

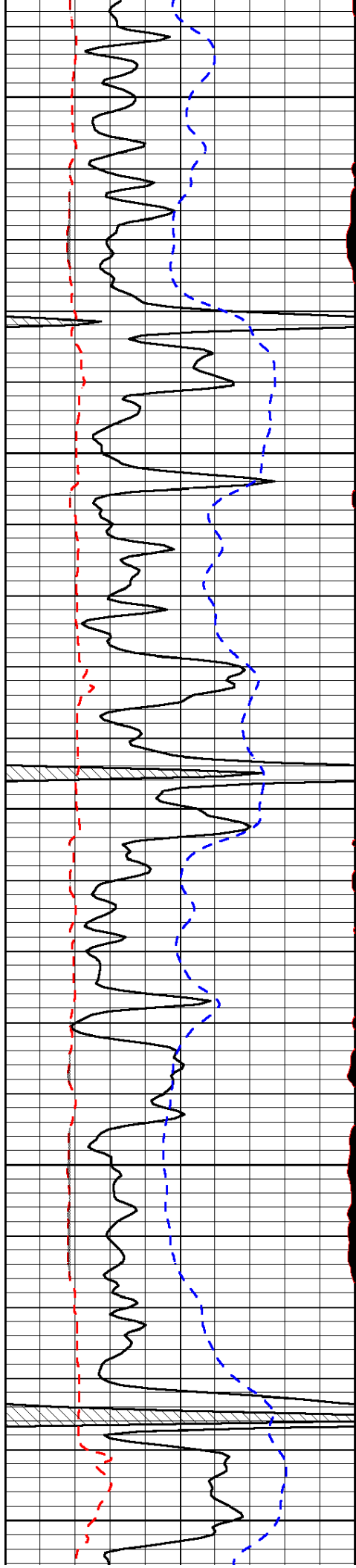
Schoenchen, KS
S to County Line, 3 W to dead end,
N Into

Database File: murfhd.db
Dataset Pathname: DIL/murfstk
Presentation Format: micro
Dataset Creation: Sun Mar 17 06:30:18 2013
Charted by: Depth in Feet scaled 1:240

0	Gamma Ray (GAPI)	150
6	MCAL (in)	16
2.875	Mud Cake (in)	7.875
-200	SP (mV)	0

0	Micro Inverse 1 X 1 (Ohm-m)	40
0	Micro Normal 2" (Ohm-m)	40
10000	Line Weight (lb)	0
	LSPD (ft/min)	





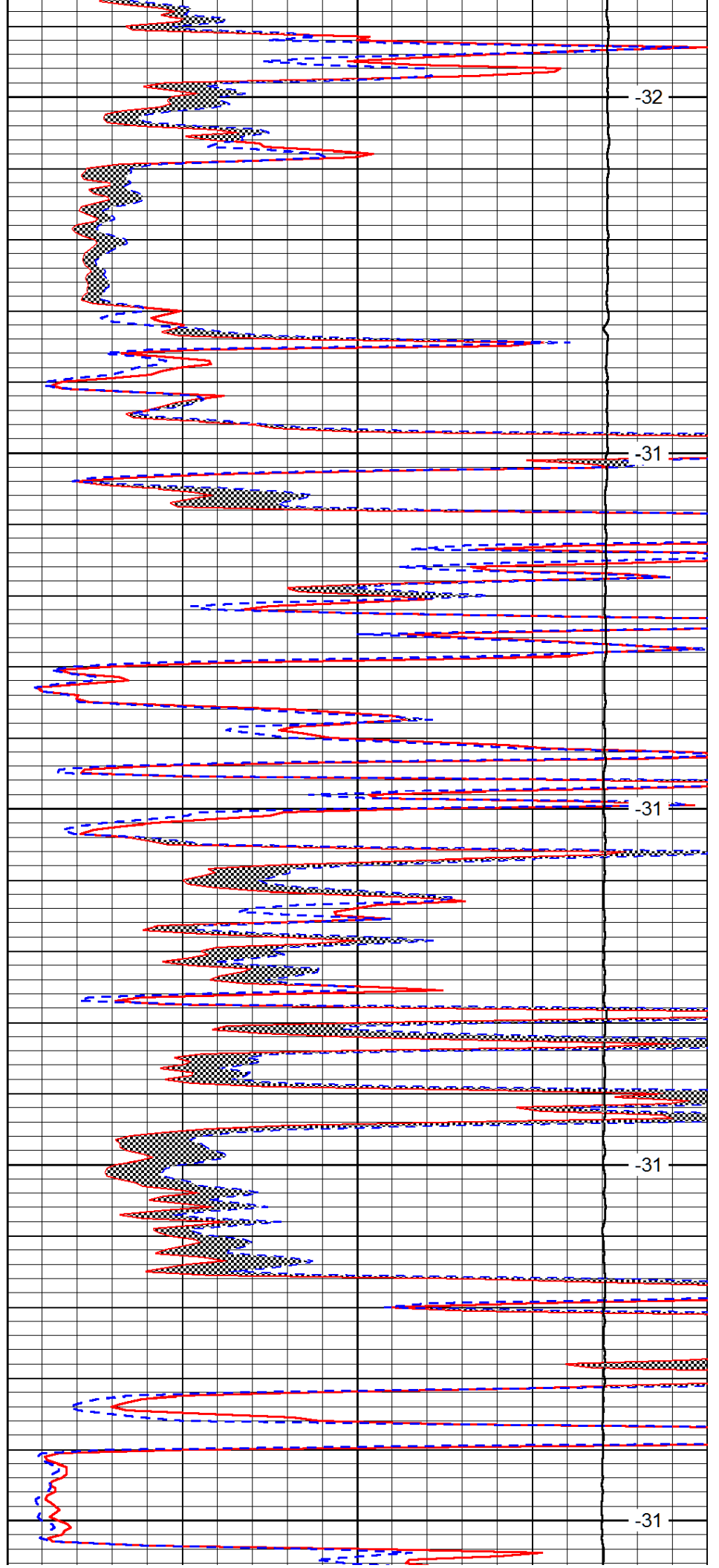
3050

3100

3150

3200

3250



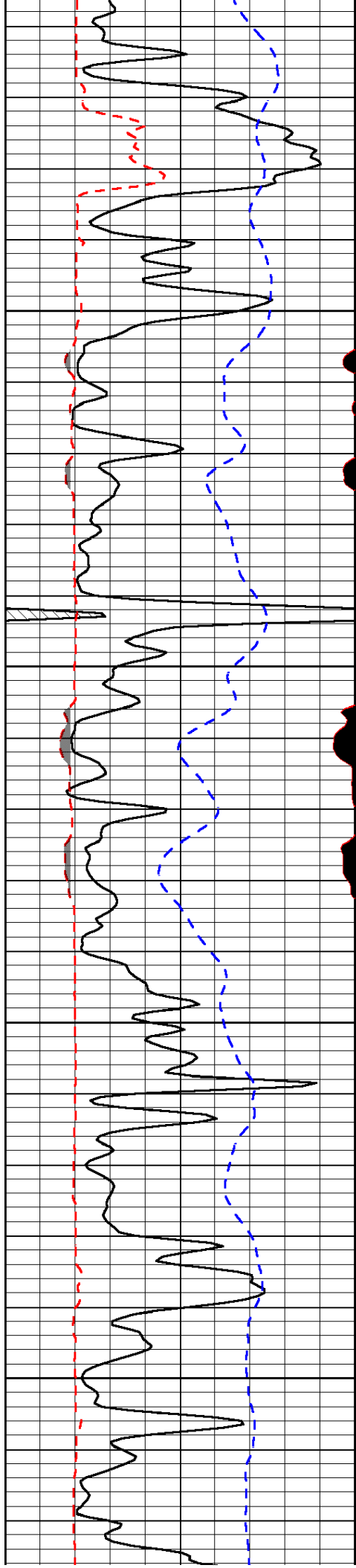
-32

-31

-31

-31

-31

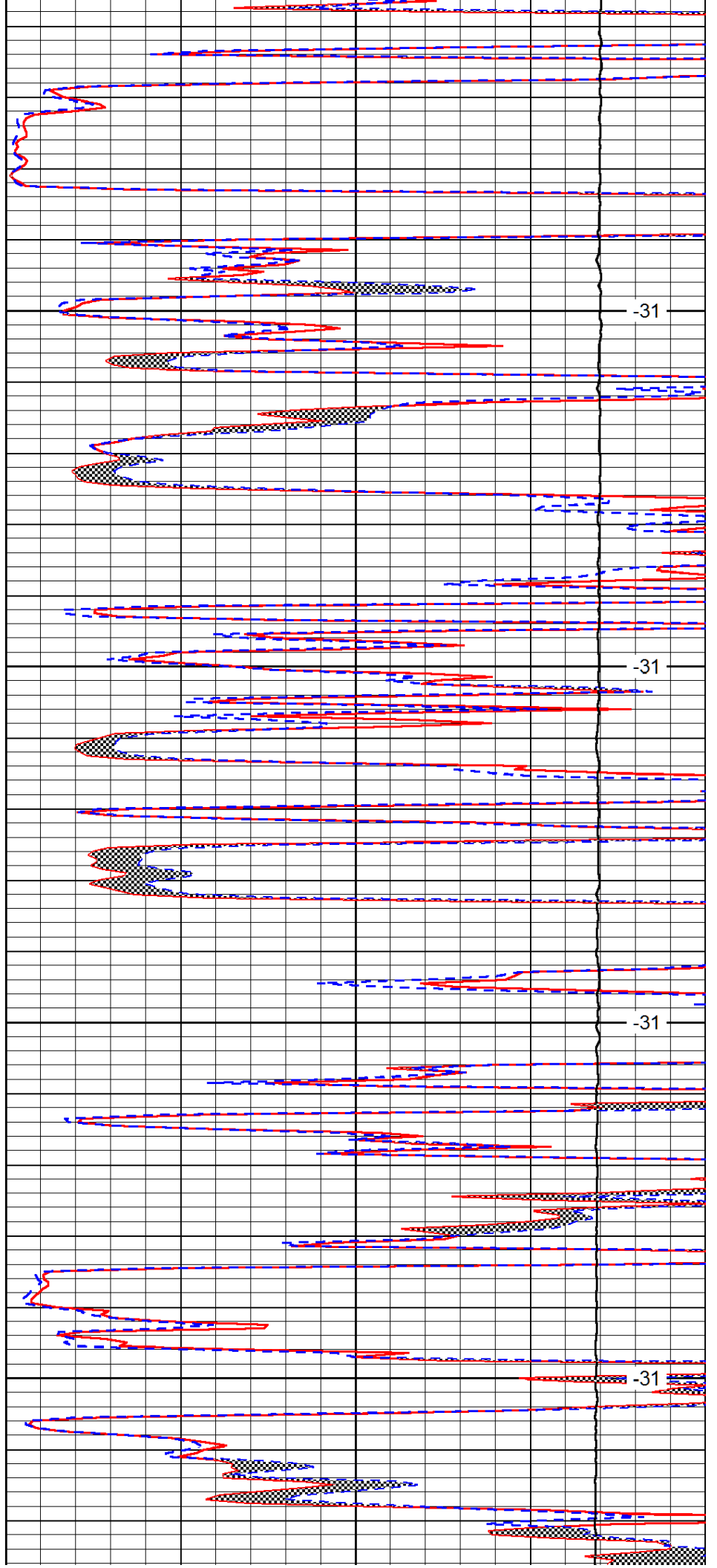


3300

3350

3400

3450

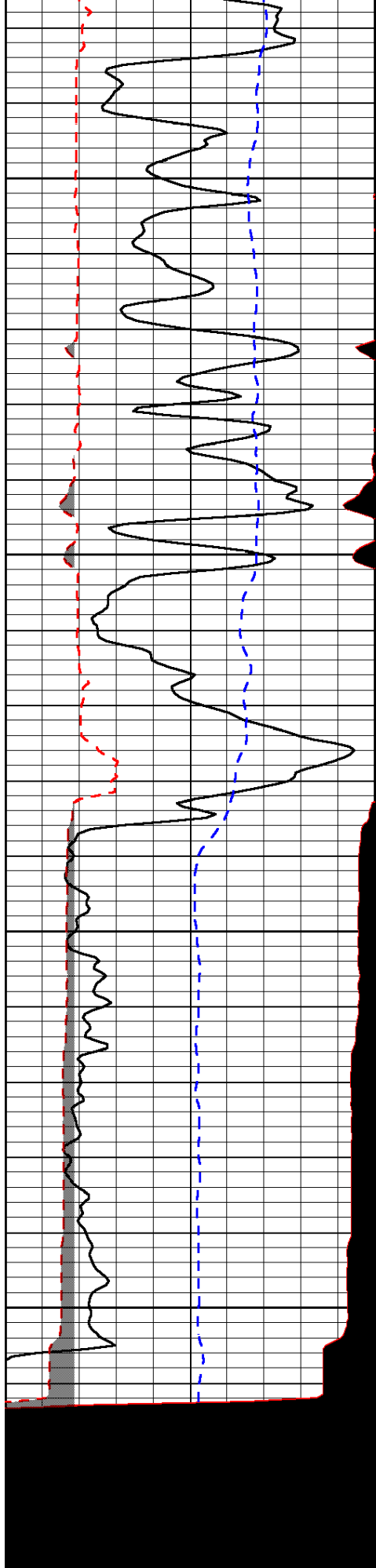


-31

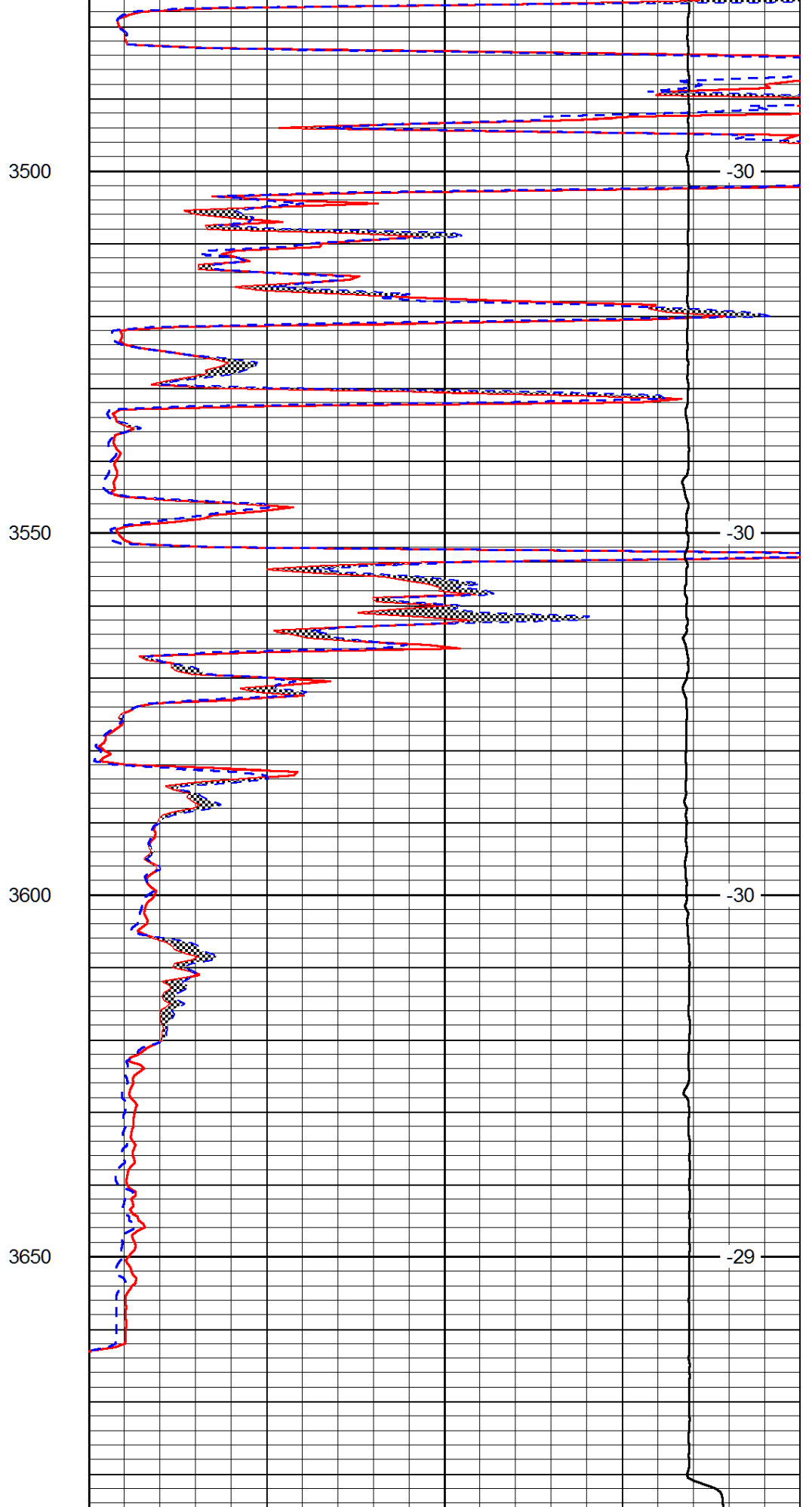
-31

-31

-31



0	Gamma Ray (GAPI)	150
6	MCAL (in)	16



0	Micro Inverse 1 X 1 (Ohm-m)	40
0	Micro Normal 2" (Ohm-m)	40

2.875	Mud Cake (in)	7.875
-200	SP (mV)	0

10000	Line weight (lb)	0
	LSPD (ft/min)	