



Pioneer Energy Services

Dual Compensated Porosity Log

API No.	15-051-26,491-00-00		
Company	Murfin Drilling Company, Inc.		
Well	Legleiter No. 1 - 36		
Field	Zimm Southeast		
County	Eljis		
Location	600' FSL & 700' FEL		
	Sec: 36	Twp: 15 S	Rge: 19 W
	Other Services DIL MEI/BHCS		
Permanent Datum	Ground Level	Elevation	1988
Log Measured From	Kelly Bushing	5	Ft. Above Perm. Datum
Drilling Measured From	Kelly Bushing		
Date	3/17/2013		
Run Number	One		
Type Log	CNL / CDL		
Depth Driller	3680		
Depth Logger	3680		
Bottom Logged Interval	3659		
Top Logged Interval	2850		
Type Fluid In Hole	Chemical		
Salinity, PPM CL	1000		
Density	9.2		
Level	Full		
Max. Rec. Temp. F	113		
Operating Rig Time	4 1/2 Hours		
Equipment -- Location	108 Hays		
Recorded By	D. Martin		
Witnessed By	Rocky Milford		

Borehole Record				Casing Record			
Run No.	Bit	From	To	Size	Wgt.	From	To
One	12.25	00	965	8.625	23#	00	965
Two	7.875	965	TD				

<<< Fold Here >>>

All interpretations are opinions based on inferences from electrical or other measurements and we cannot and do not guarantee the accuracy or correctness of any interpretation, and we shall not, except in the case of gross or willful negligence on our part, be liable or responsible for any loss, costs, damages, or expenses incurred or sustained by anyone resulting from any interpretation made by any of our officers, agents or employees. These interpretations are also subject to our general terms and conditions set out in our current Price Schedule.

Comments

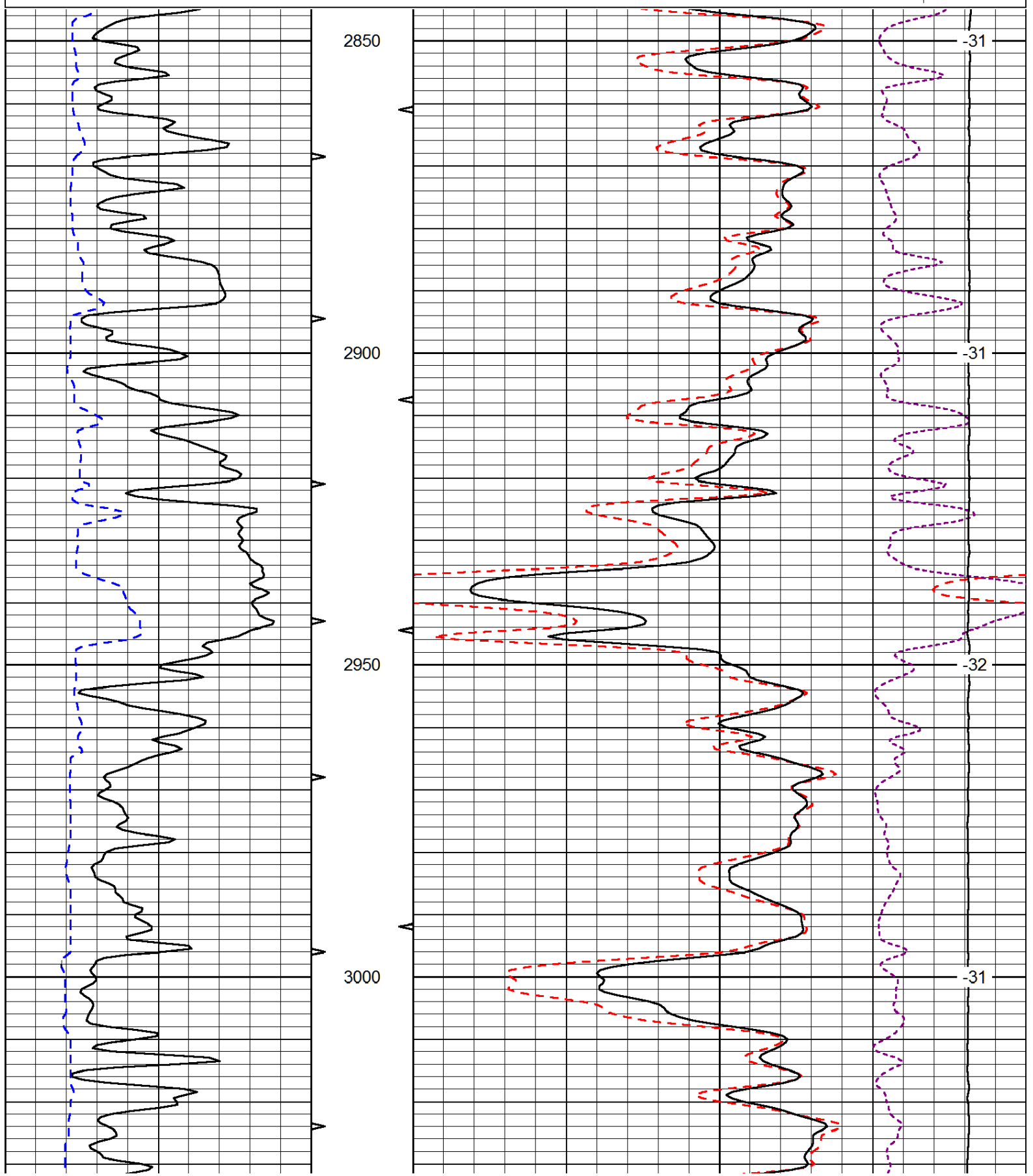
Thank you for using Log-Tech, Inc.
(785) 625-3858

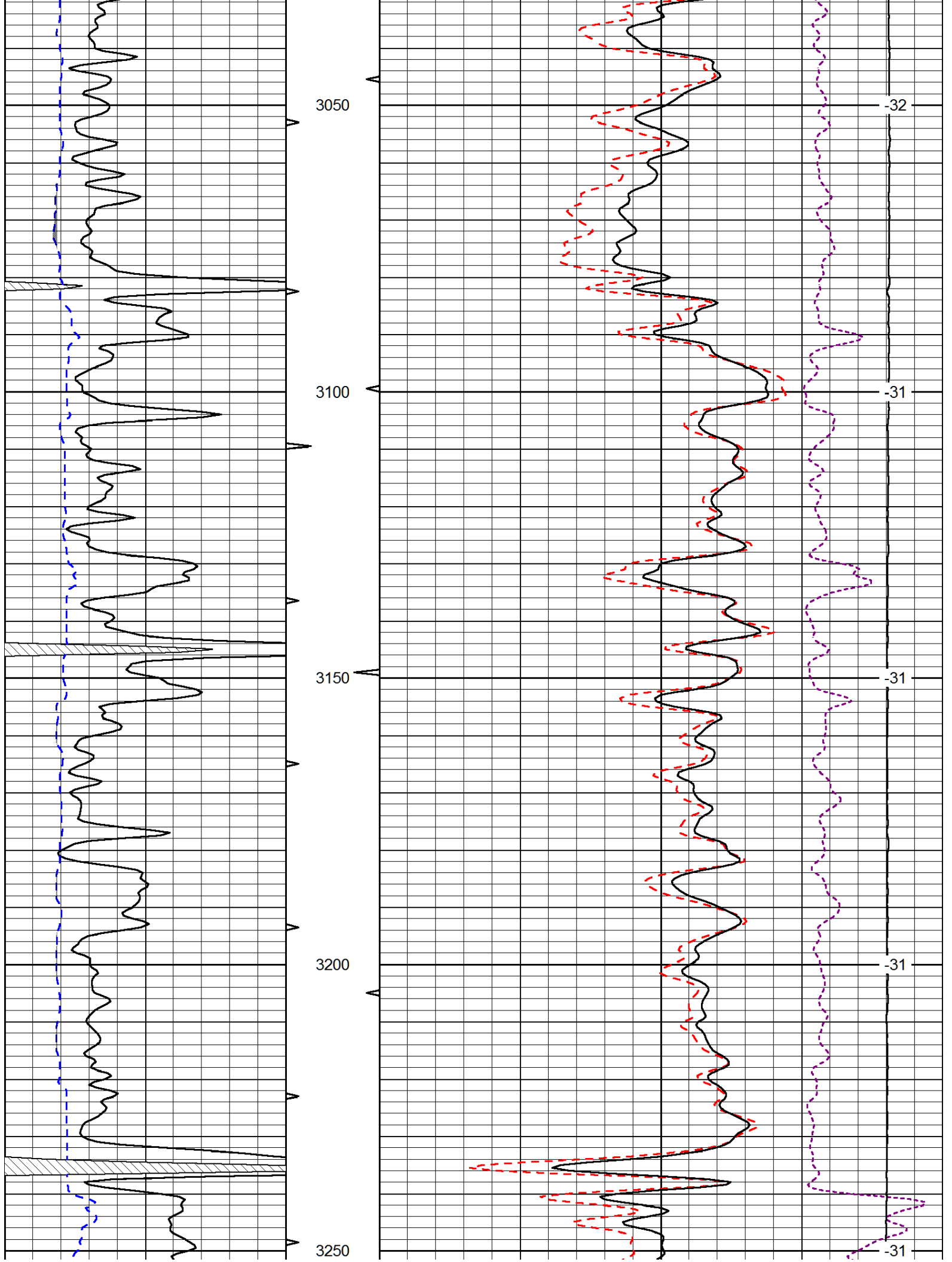
Schoenchen, KS
S to County Line, 3 W to dead end,
N Into

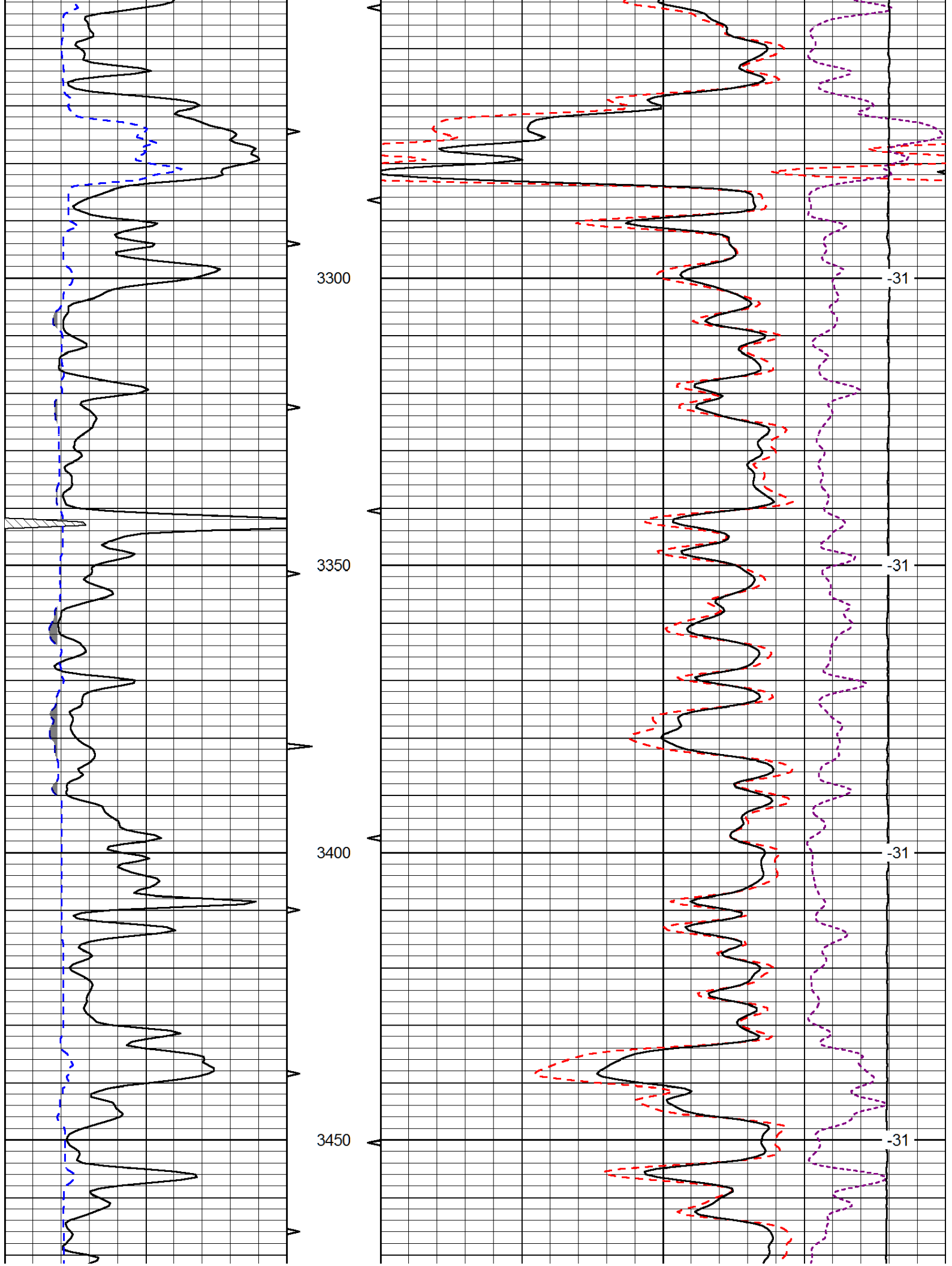
Database File: murfhd.db
 Dataset Pathname: DIL/murfstk
 Presentation Format: cdl
 Dataset Creation: Sun Mar 17 06:30:18 2013
 Charted by: Depth in Feet scaled 1:240

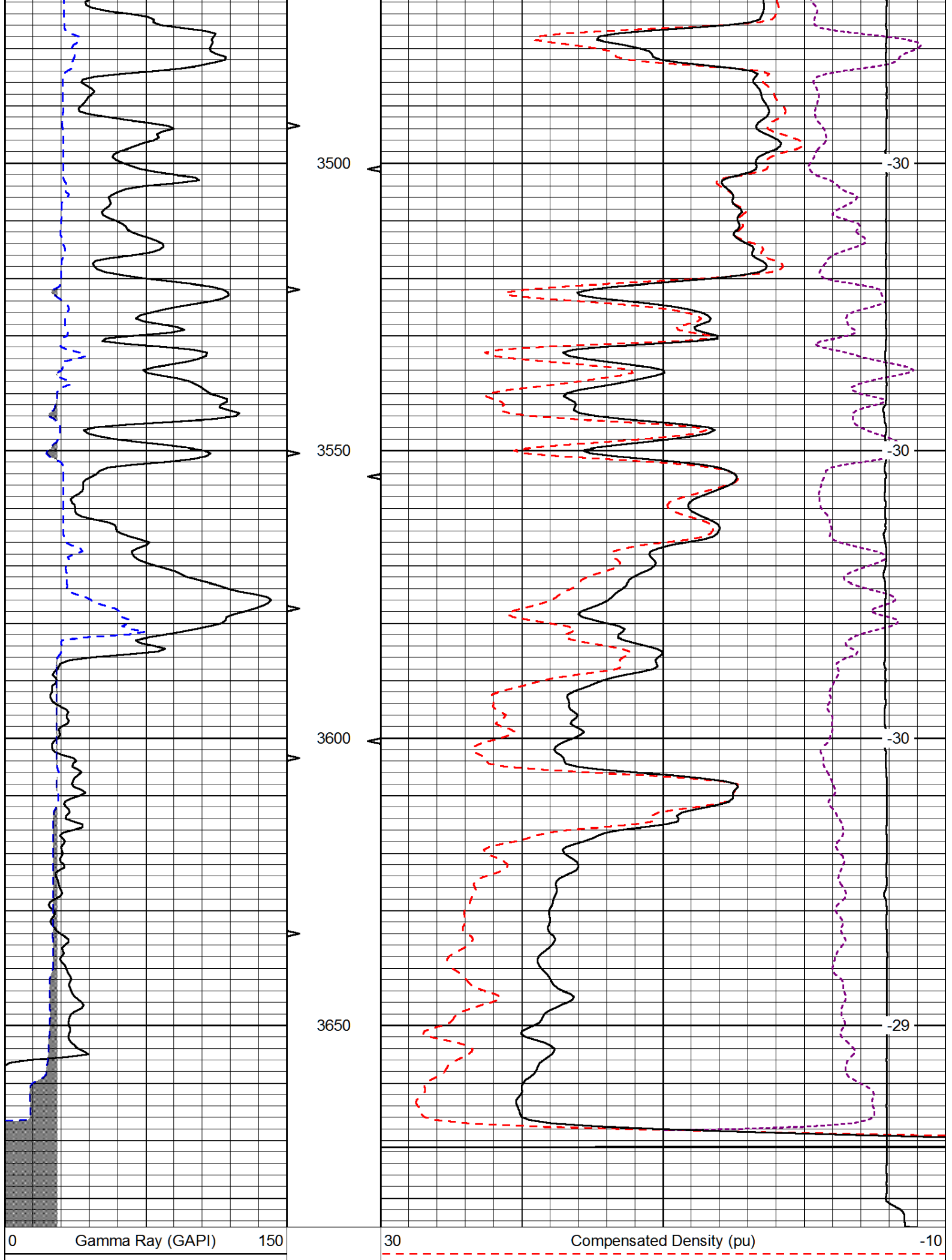
0	Gamma Ray (GAPI)	150
6	Caliper (in)	16

30	Compensated Density (pu)	-10
2	Bulk Density (g/cc)	3
15000	Line Tension (lb)	0
-0.25	Correction (g/cc)	0.25
		LSPD (ft/min)





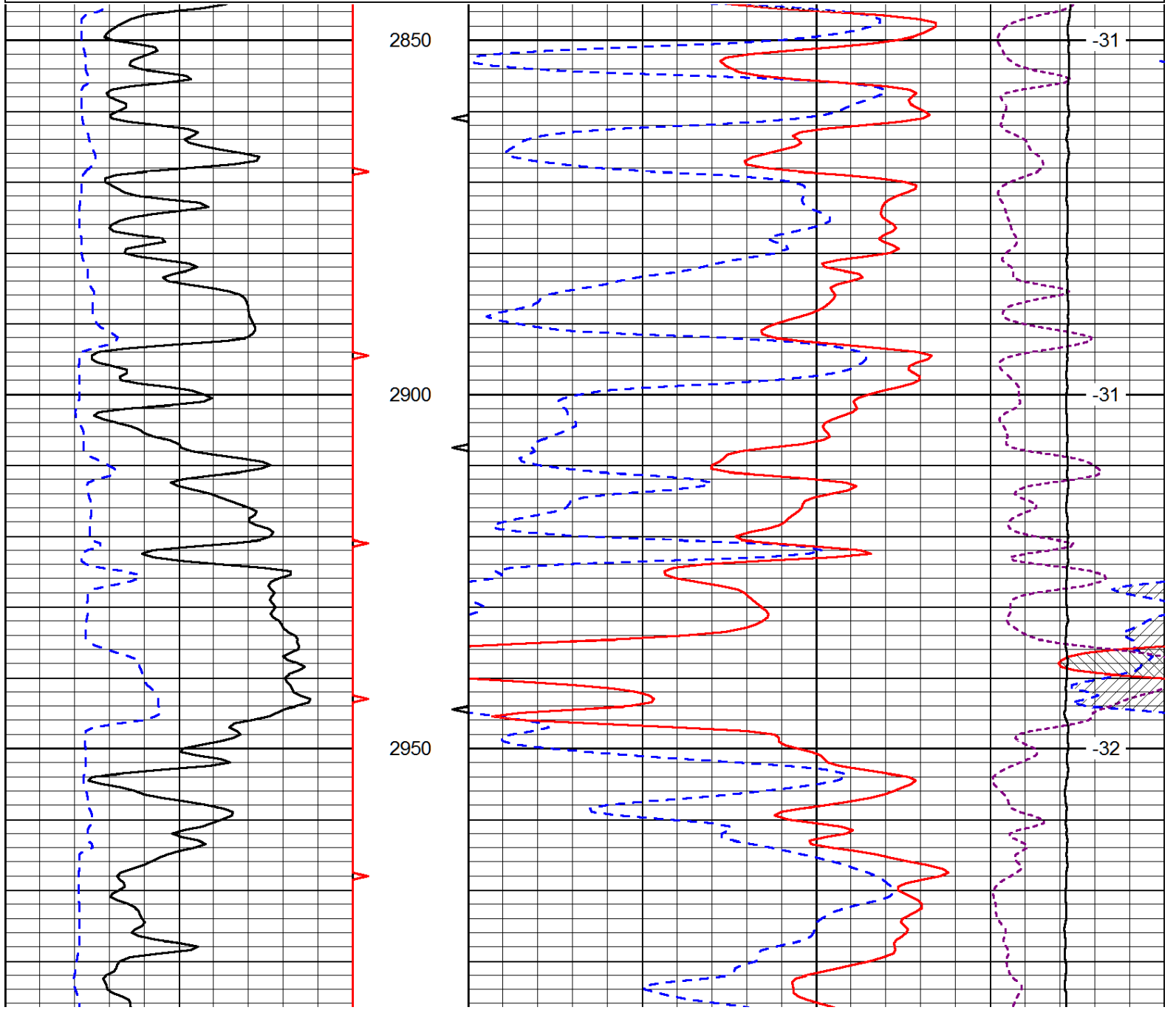


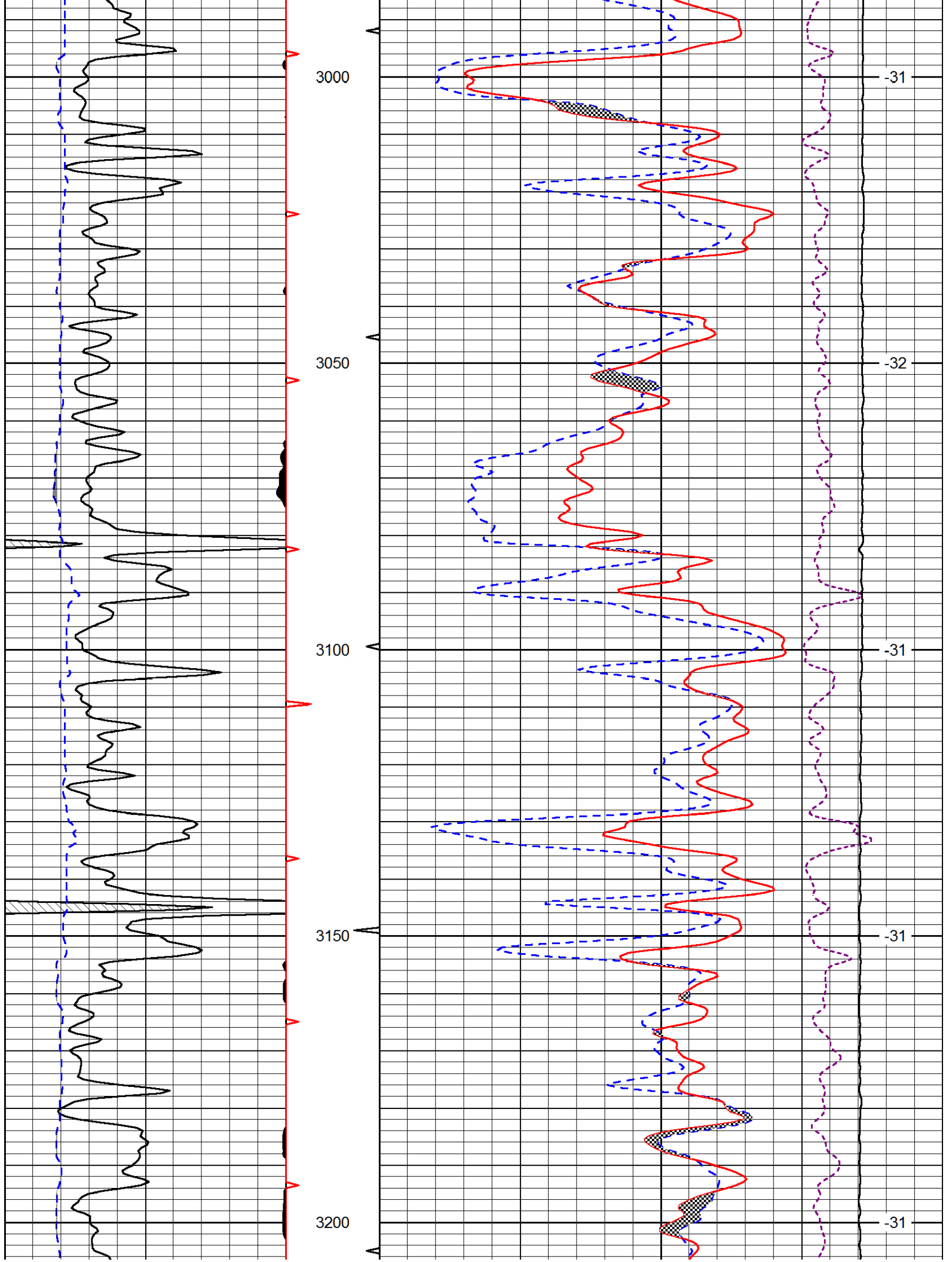


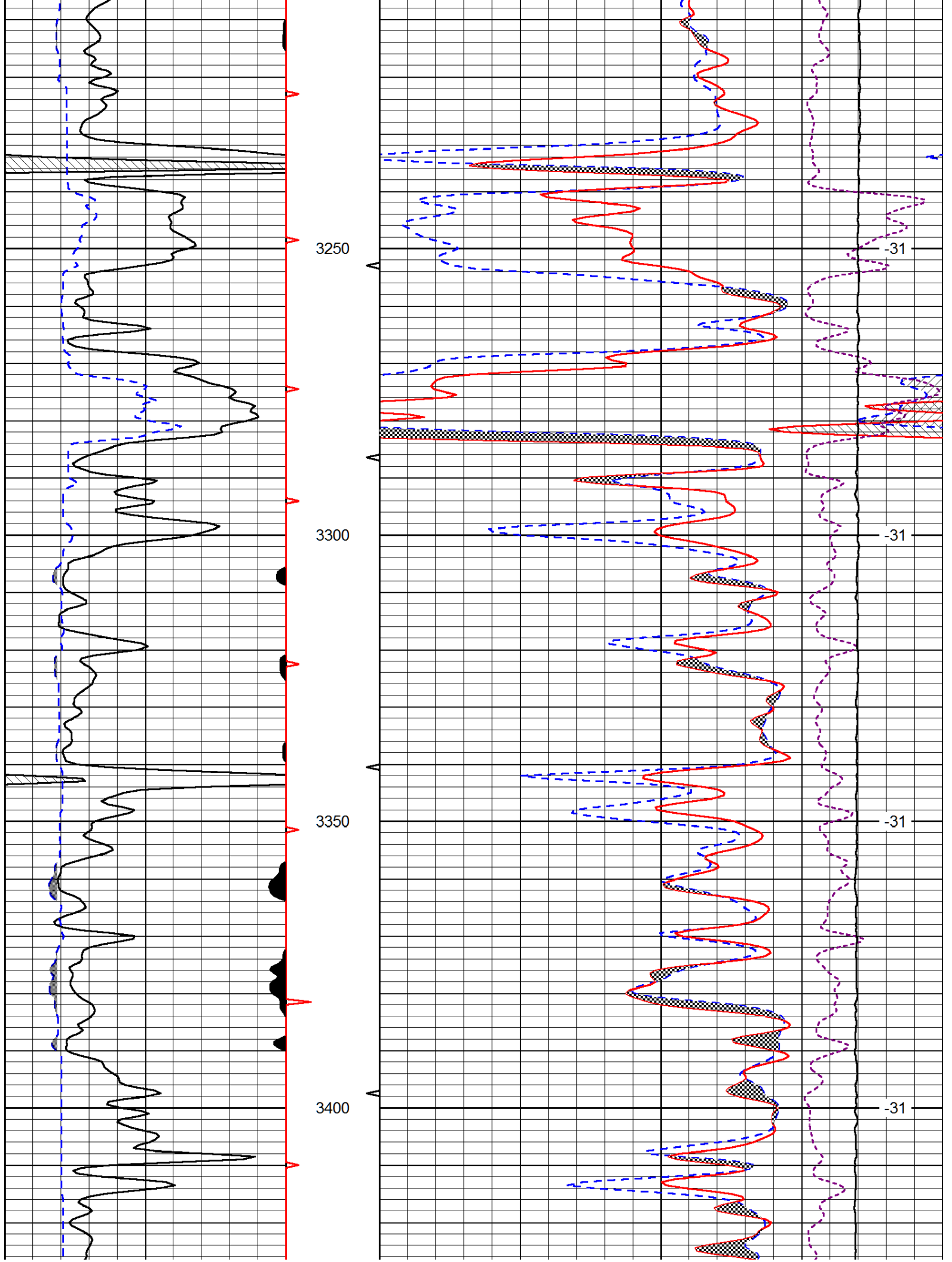
6	Caliper (in)	16	2	Bulk Density (g/cc)	3	
			15000	Line Tension (lb)	0	
				-0.25	Correction (g/cc)	0.25
					LSPD (ft/min)	

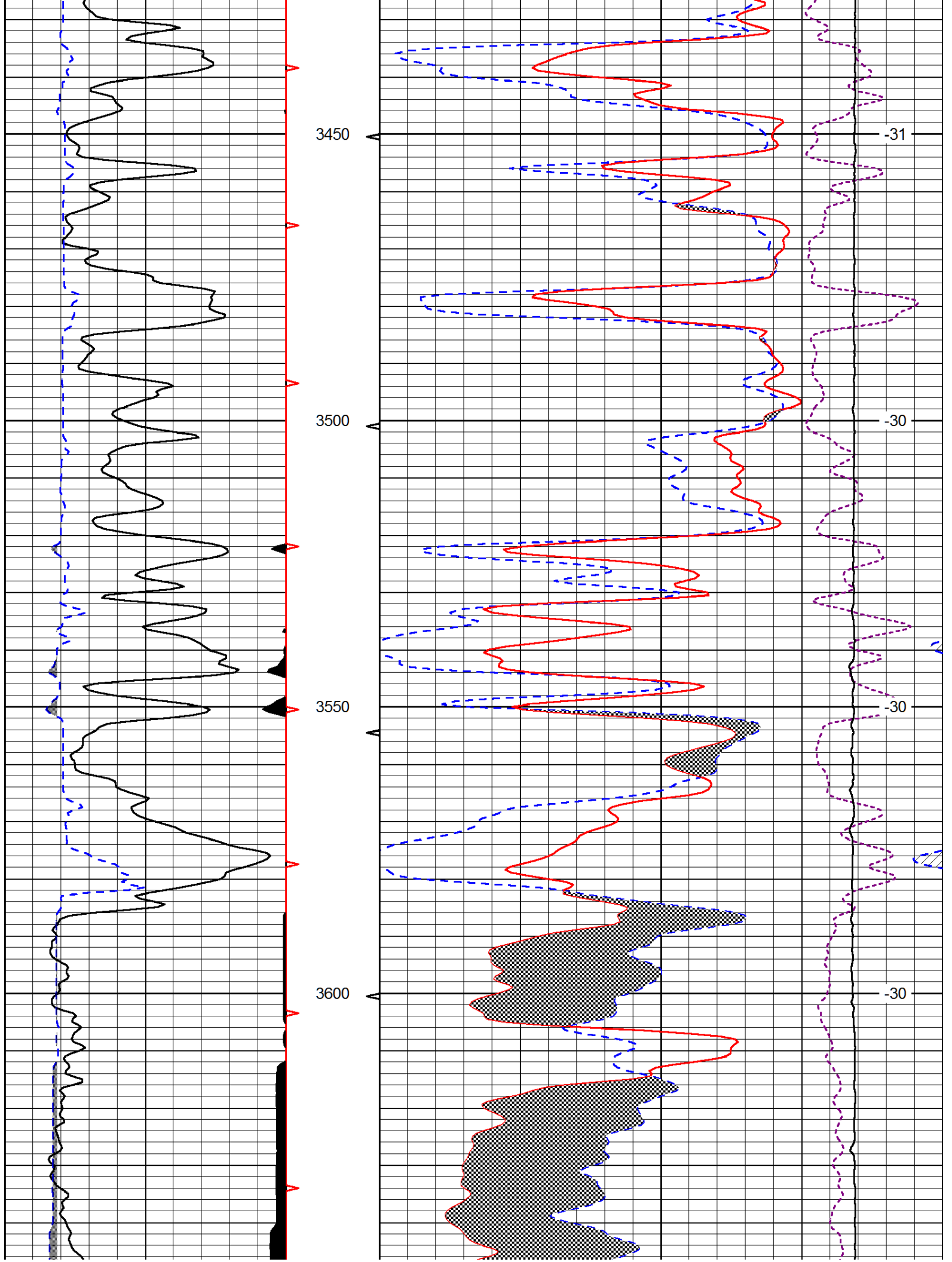
Database File: murfhd.db
 Dataset Pathname: DIL/murfstk
 Presentation Format: cndlspec
 Dataset Creation: Sun Mar 17 06:30:18 2013
 Charted by: Depth in Feet scaled 1:240

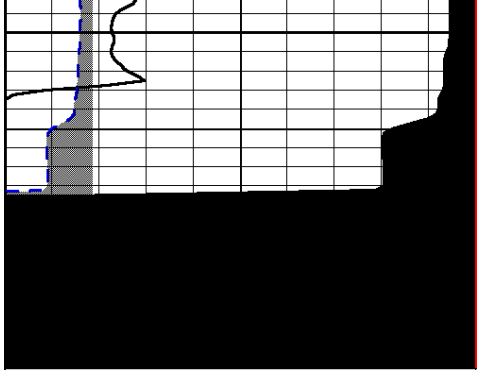
0	Gamma Ray (GAPI)	150	30	CNLS (pu)	-10	
6	Caliper (in)	16	30	Compensated Density (2.71 ma) (pu)	-10	
			10000	Line Tension (lb)	0	
				-0.25	Correction (g/cc)	0.25
					LSPD (ft/min)	



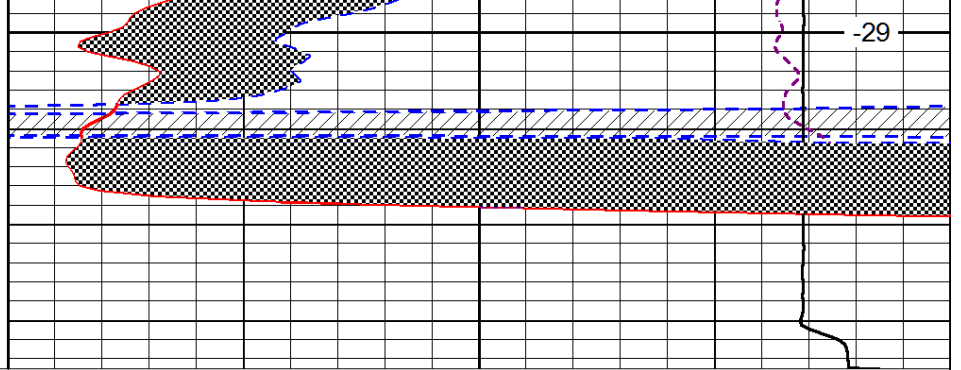








3650



-29

0	Gamma Ray (GAPI)	150
6	Caliper (in)	16

30	CNLS (pu)	-10
30	Compensated Density (2.71 ma) (pu)	-10
10000	Line Tension (lb)	0

-0.25	Correction (g/cc)	0.25
-------	-------------------	------

LSPD
(ft/min)