



Pioneer Energy Services

# Dual Induction Log

15-051-26,491-00-00

**Company** Murfin Drilling Company, Inc.  
**Well** Legleiter No. 1 - 36  
**Field** Zimm Southeast  
**County** Ellis **State** Kansas  
**Location** 600' FSL & 700' FEL  
**Sec:** 36 **Twp:** 15 S **Rge:** 19 W

Other Services  
 CNL/CDL  
 MEL/BHCS

**Permanent Datum** Ground Level Elevation 1988  
**Log Measured From** Kelly Bushing 5 Ft. Above Perm. Datum  
**Drilling Measured From** Kelly Bushing

**Elevation**  
 K.B. 1993  
 D.F. 1988  
 G.L. 1988

Date	3/17/2013	
Run Number	One	
Depth Driller	3680	
Depth Logger	3680	
Bottom Logged Interval	3679	
Top Log Interval	0	
Casing Driller	8.625 @ 965	
Casing Logger	962	
Bit Size	7.875	
Type Fluid in Hole	Chemical	
Salinity, ppm CL	1000	
Density / Viscosity	9.2   56	
pH / Fluid Loss	10.5   6.8	
Source of Sample	Flowline	
Rm @ Meas. Temp	.25 @ 58	
Rmf @ Meas. Temp	.19 @ 58	
Rmc @ Meas. Temp	.34 @ 58	
Source of Rmf / Rmc	Charts	
Rm @ BHT	.13 @ 113	
Operating Rig Time	4 1/2 Hours	
Max Rec. Temp. F	113	
Equipment Number	108	
Location	Hays	
Recorded By	D. Martin	
Witnessed By	Rocky Milford	

<<< Fold Here >>>

All interpretations are opinions based on inferences from electrical or other measurements and we cannot and do not guarantee the accuracy or correctness of any interpretation, and we shall not, except in the case of gross or willful negligence on our part, be liable or responsible for any loss, costs, damages, or expenses incurred or sustained by anyone resulting from any interpretation made by any of our officers, agents or employees. These interpretations are also subject to our general terms and conditions set out in our current Price Schedule.

### Comments

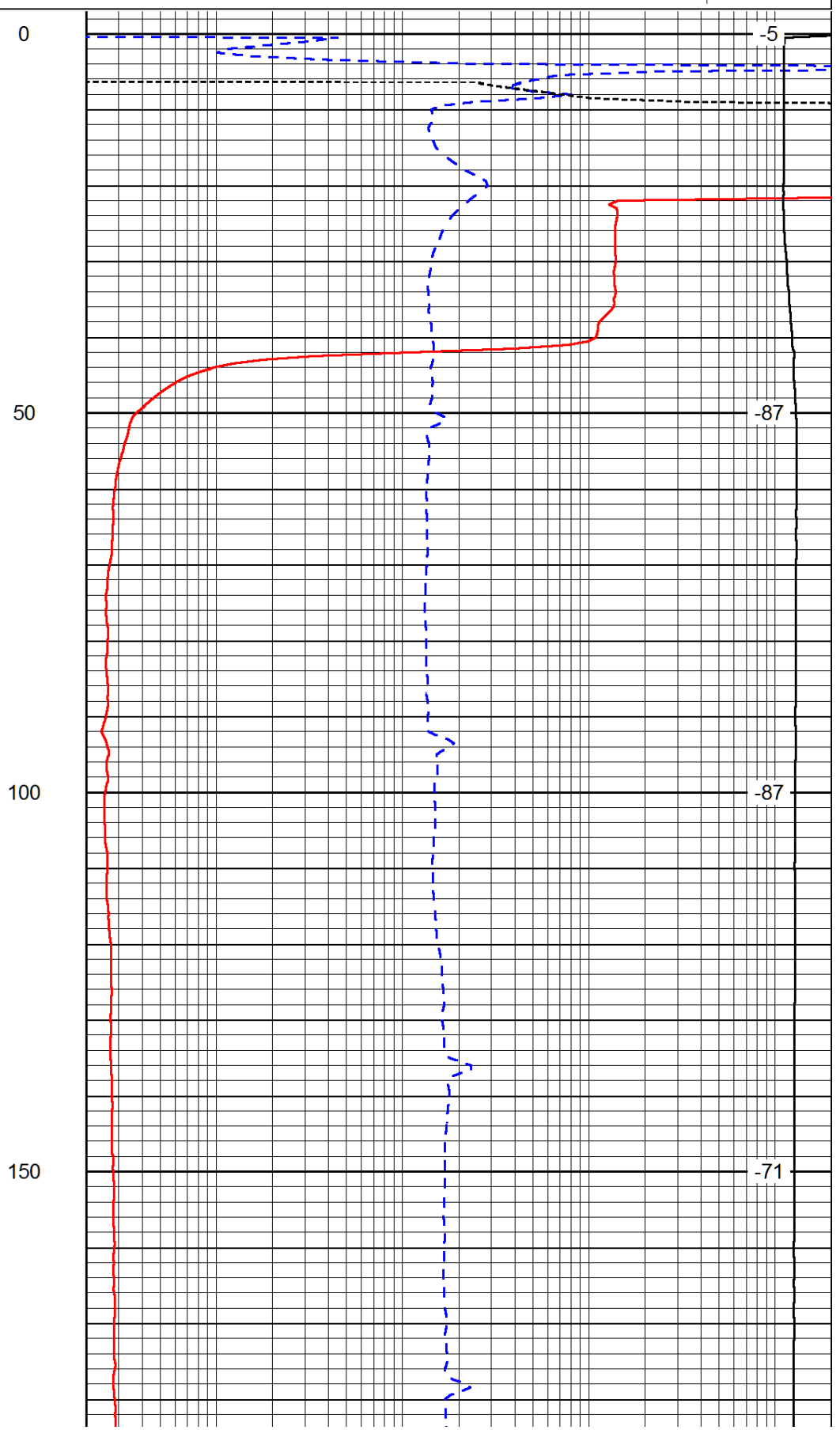
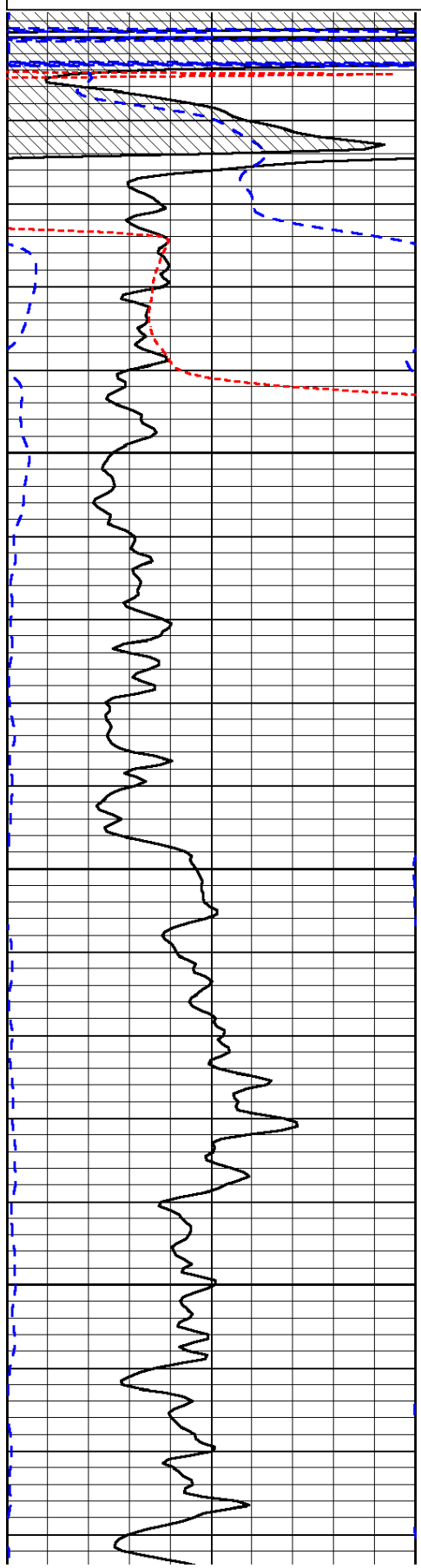
Thank you for using Log-Tech, Inc.  
 (785) 625-3858  
 Schoenchen, KS  
 S to County Line, 3 W to dead end,  
 N Into

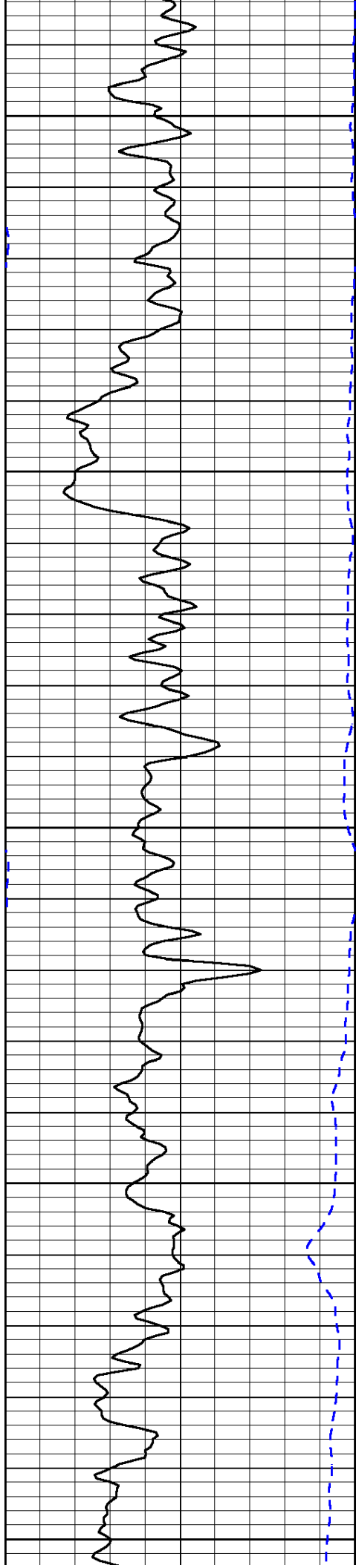
Database File: murfhd.db  
 Dataset Pathname: DIL/murfstk  
 Presentation Format: dil  
 Dataset Creation: Sun Mar 17 06:30:18 2013  
 Charted by: Depth in Feet scaled 1:240

0	Gamma Ray (GAPI)	150
-160	RXO/RT	40
-200	SP (mV)	0

0.2	Deep Resistivity (Ohm-m)	2000
0.2	Medium Resistivity (Ohm-m)	2000
0.2	Shallow Resistivity (Ohm-m)	2000
10000	Line Tension (lb)	0

LSPD  
(ft/min)





200

250

300

350

400

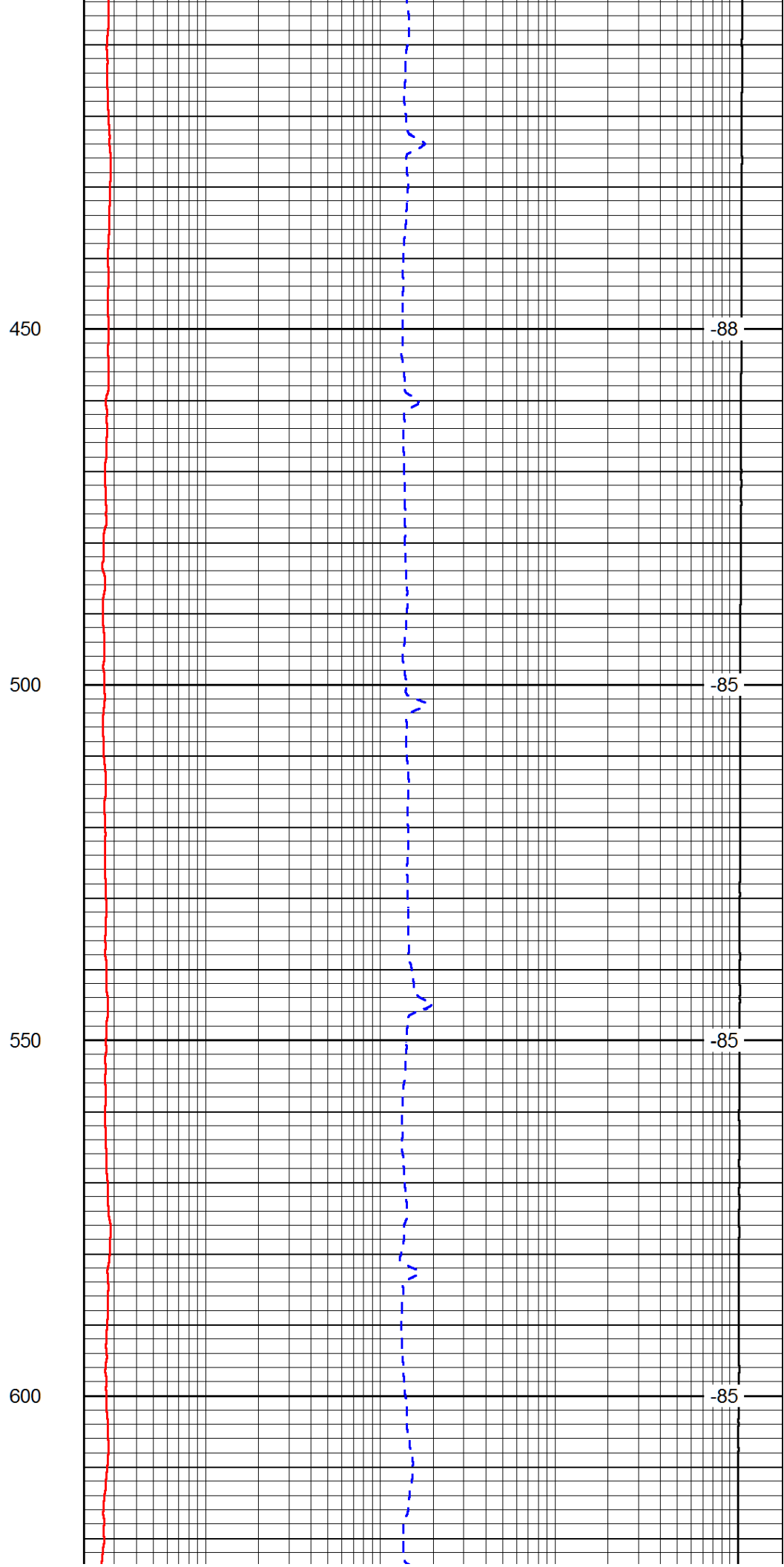
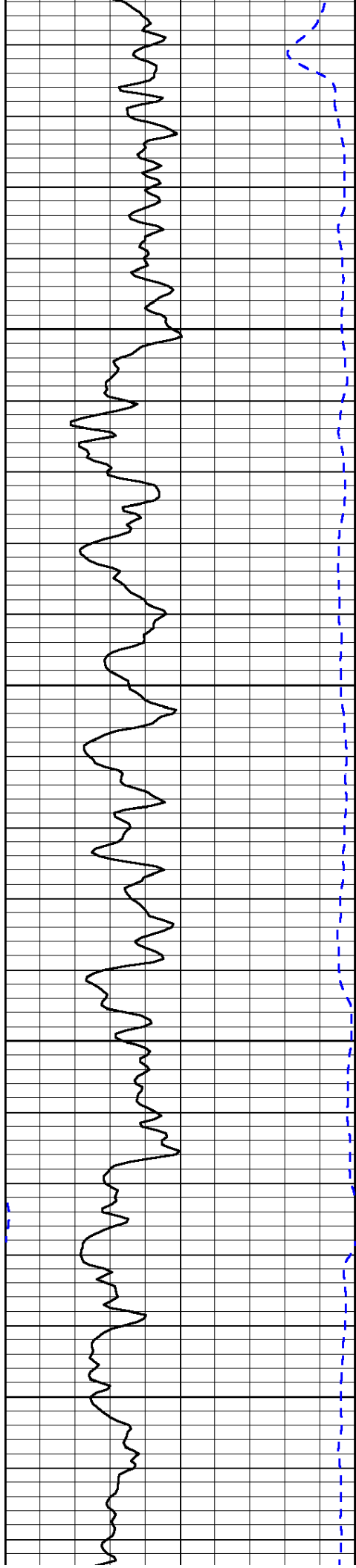
-76

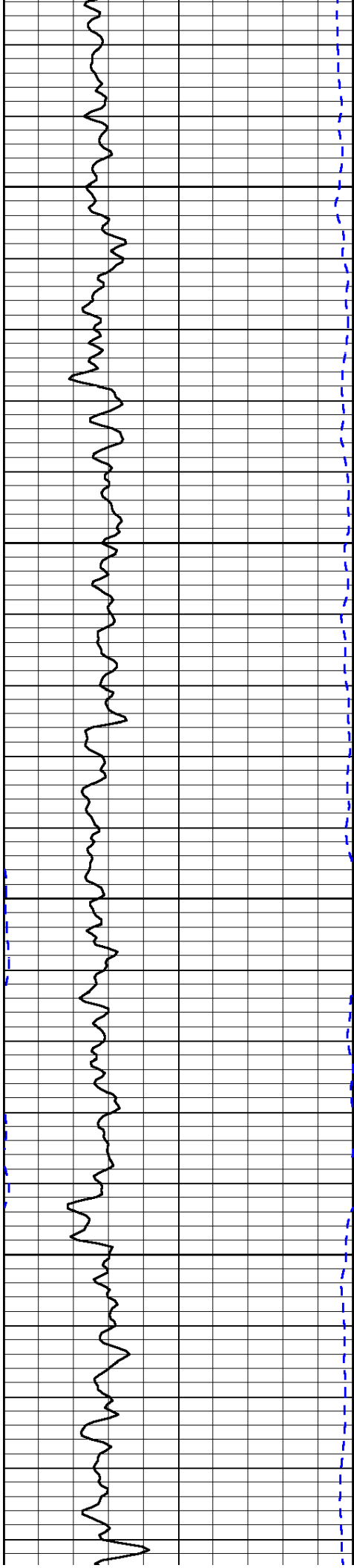
-79

-79

-79

-80



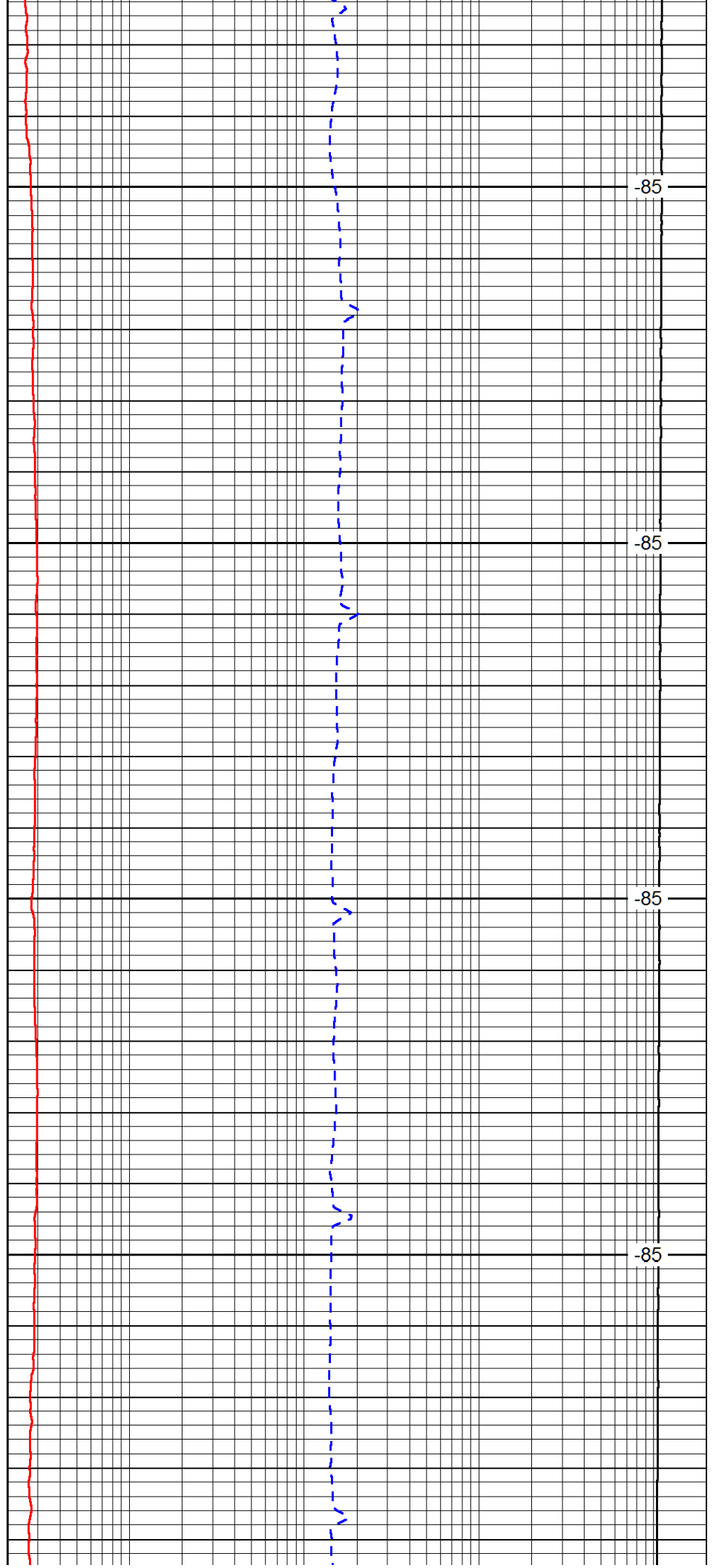


650

700

750

800

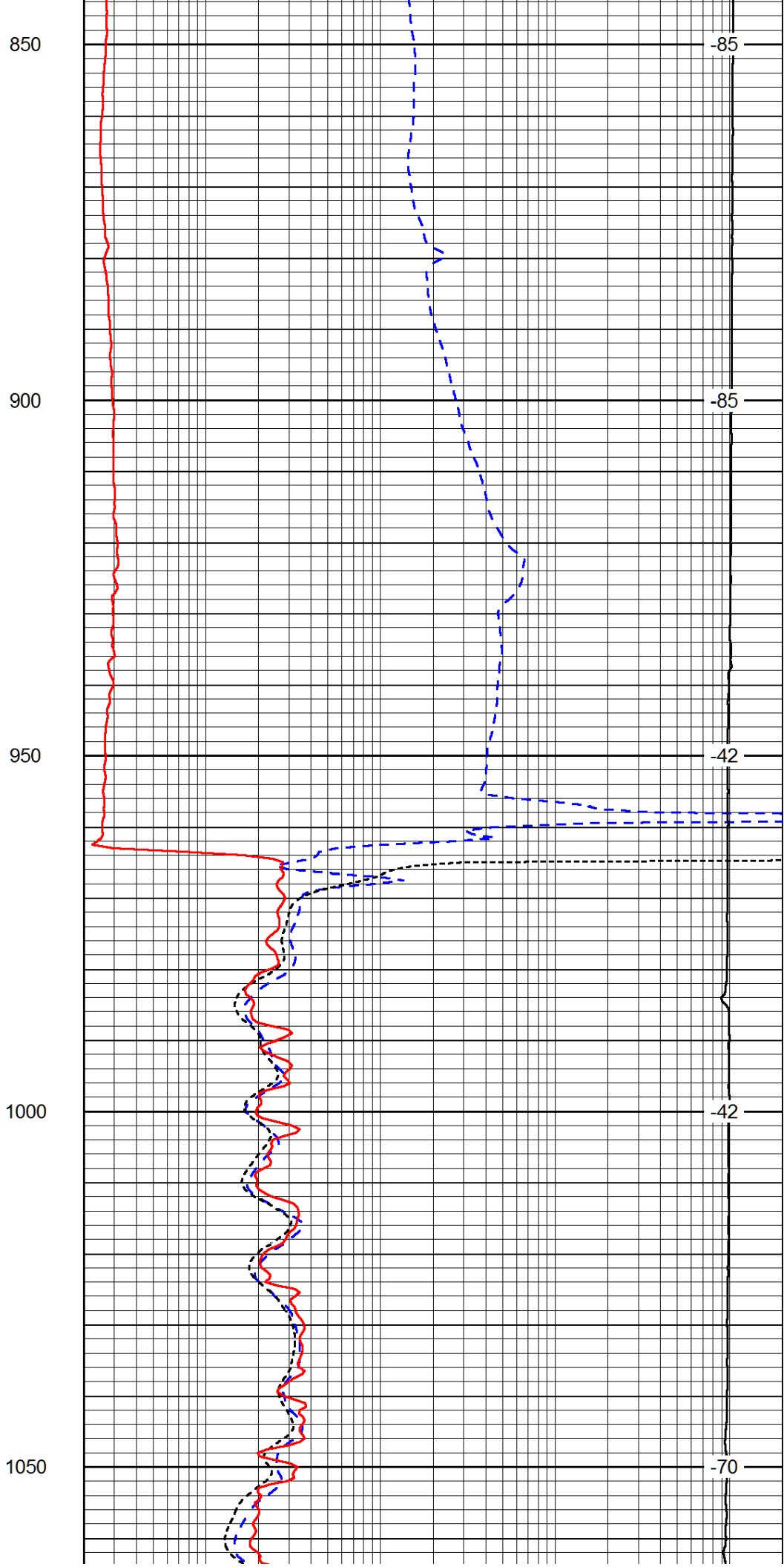
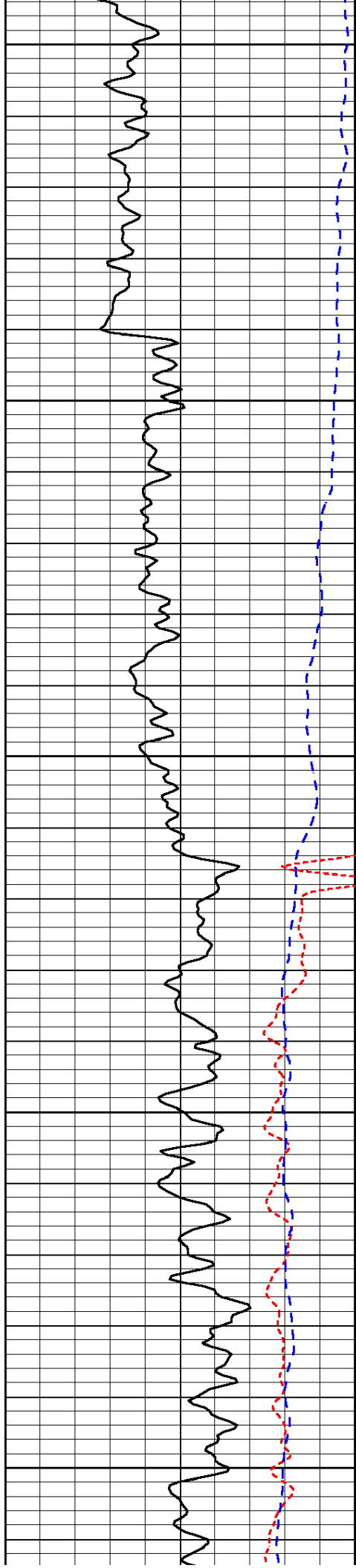


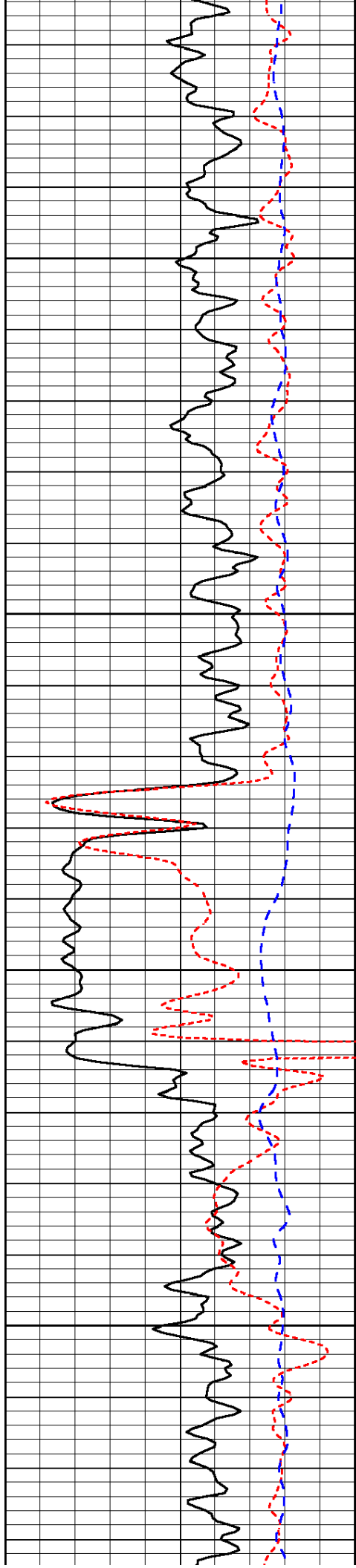
-85

-85

-85

-85



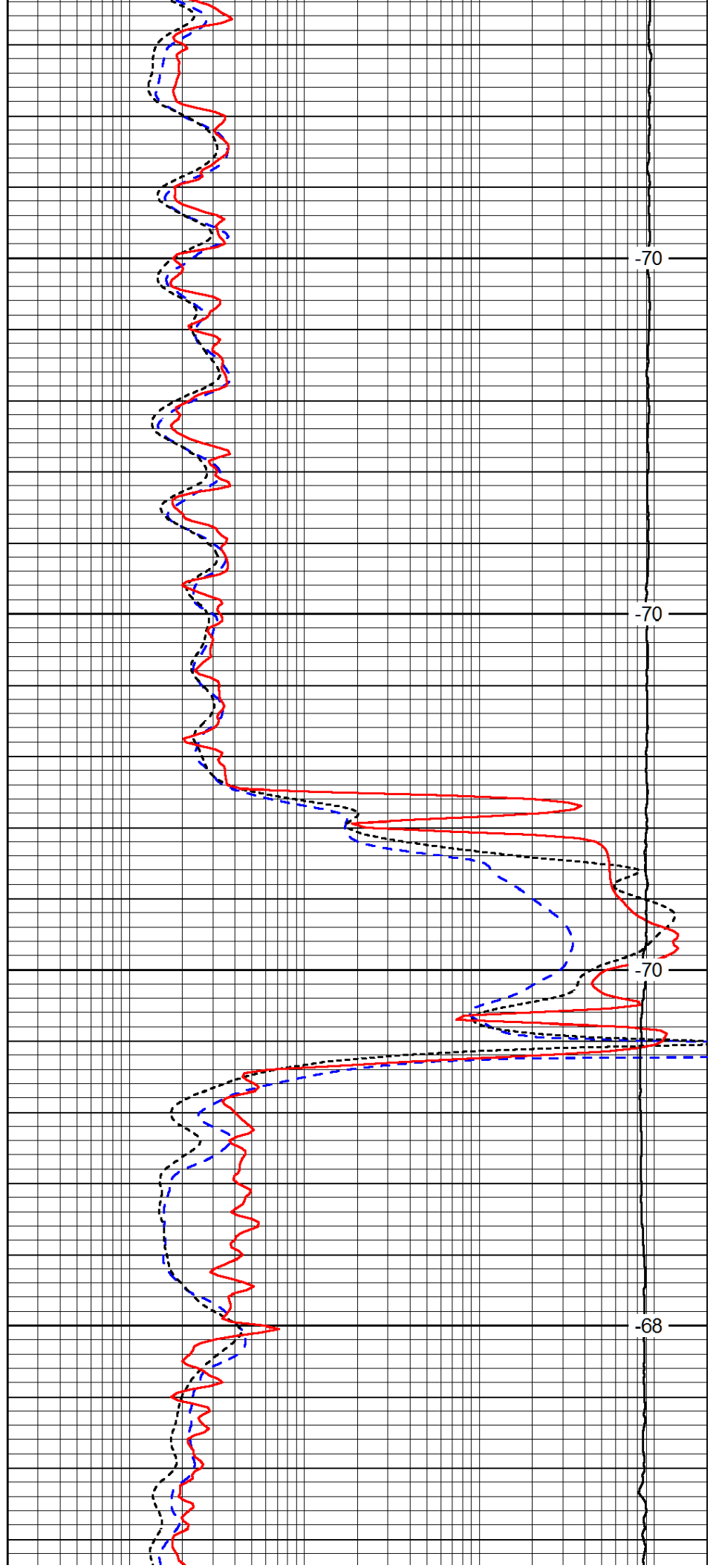


1100

1150

1200

1250

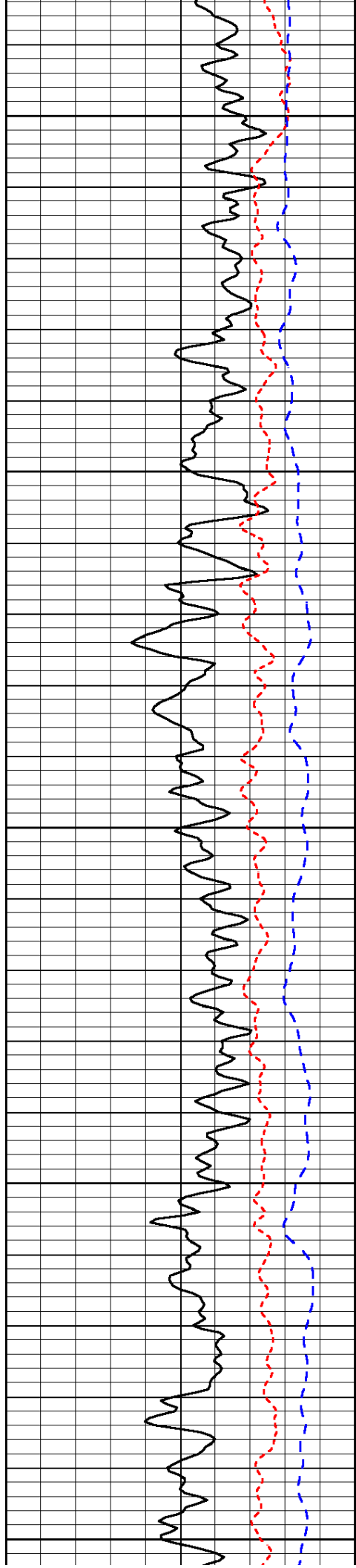


-70

-70

-70

-68



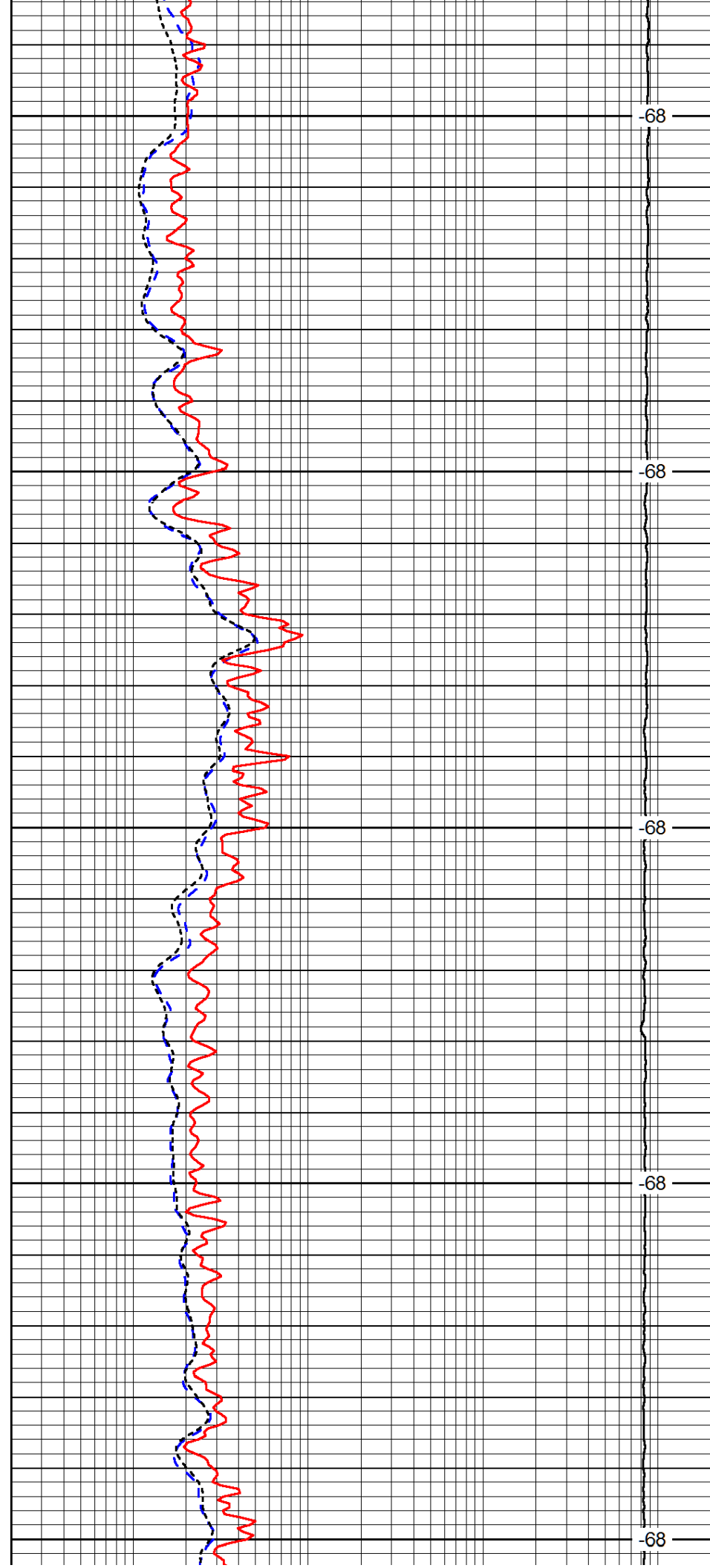
1300

1350

1400

1450

1500



-68

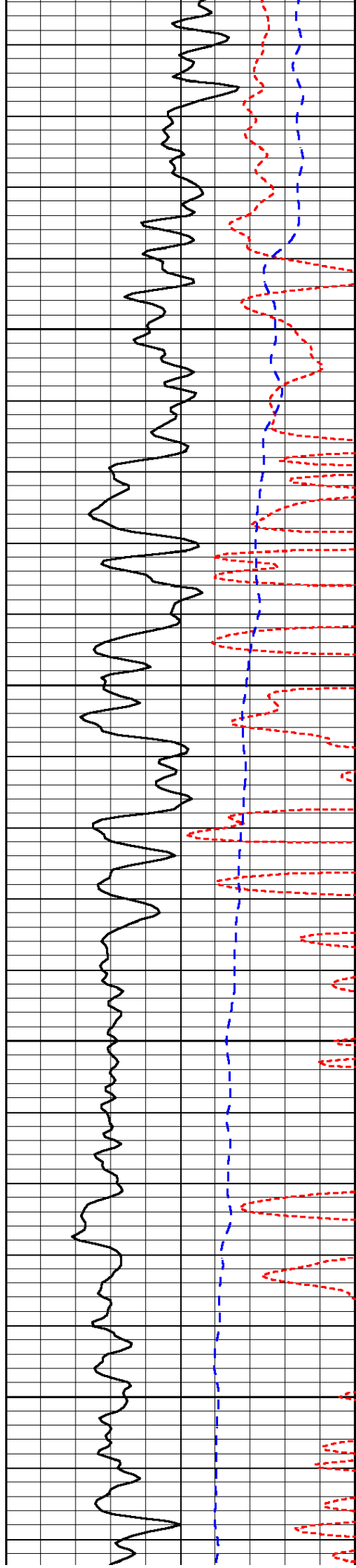
-68

-68

-68

-68



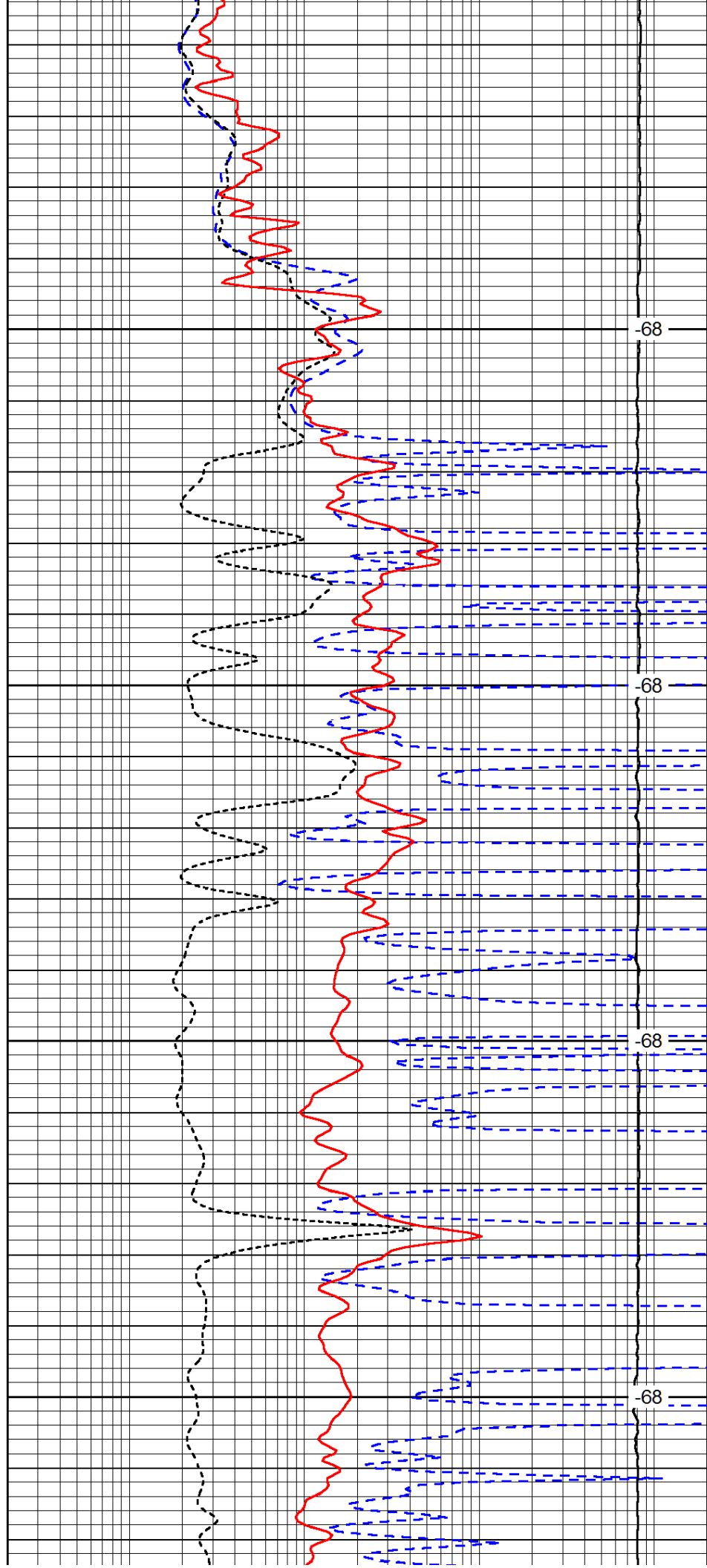


1550

1600

1650

1700

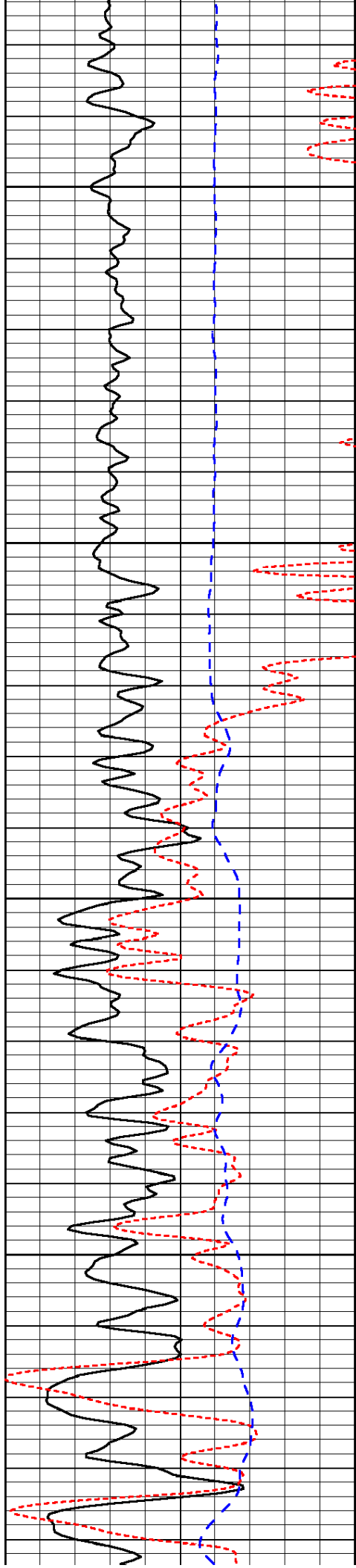


-68

-68

-68

-68

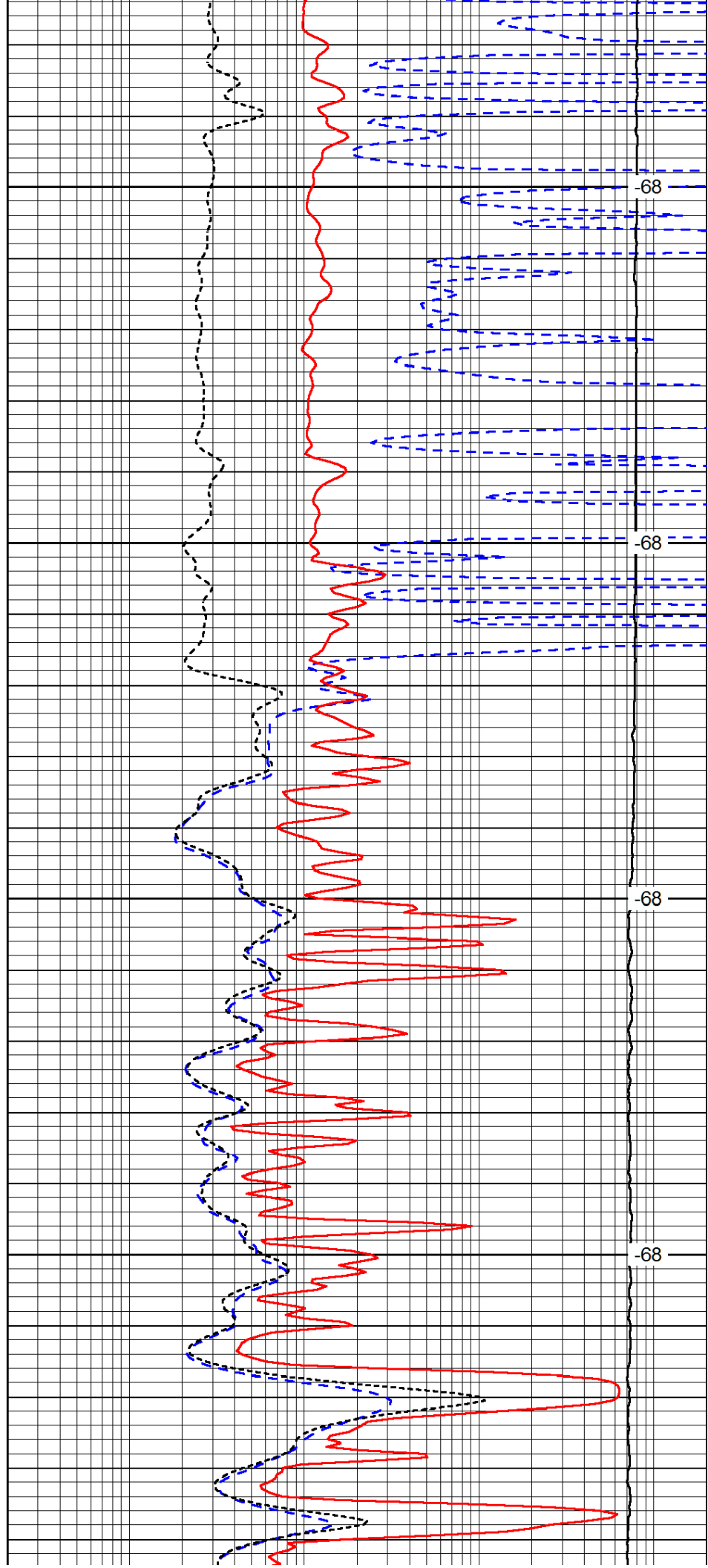


1750

1800

1850

1900

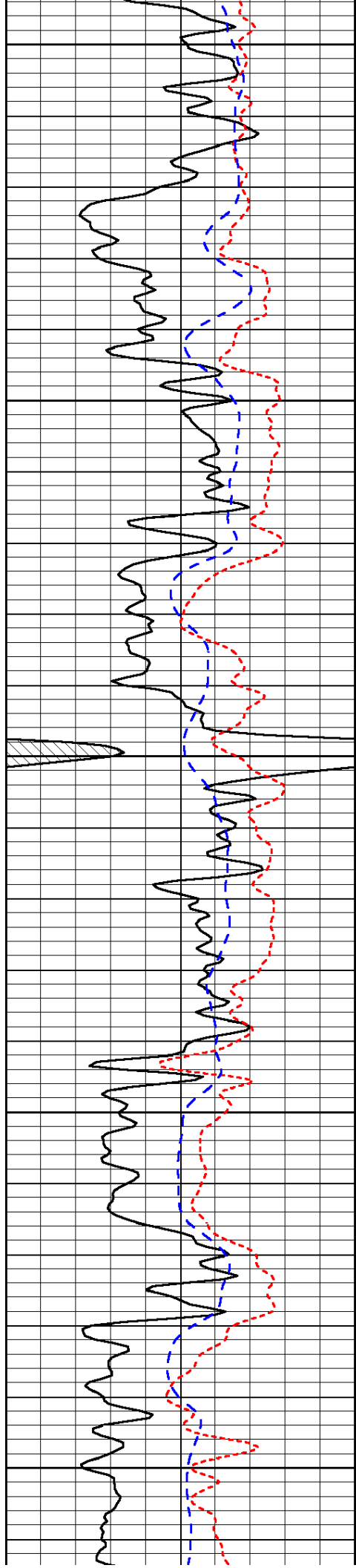


68

68

68

68



1950

2000

2050

2100

2150

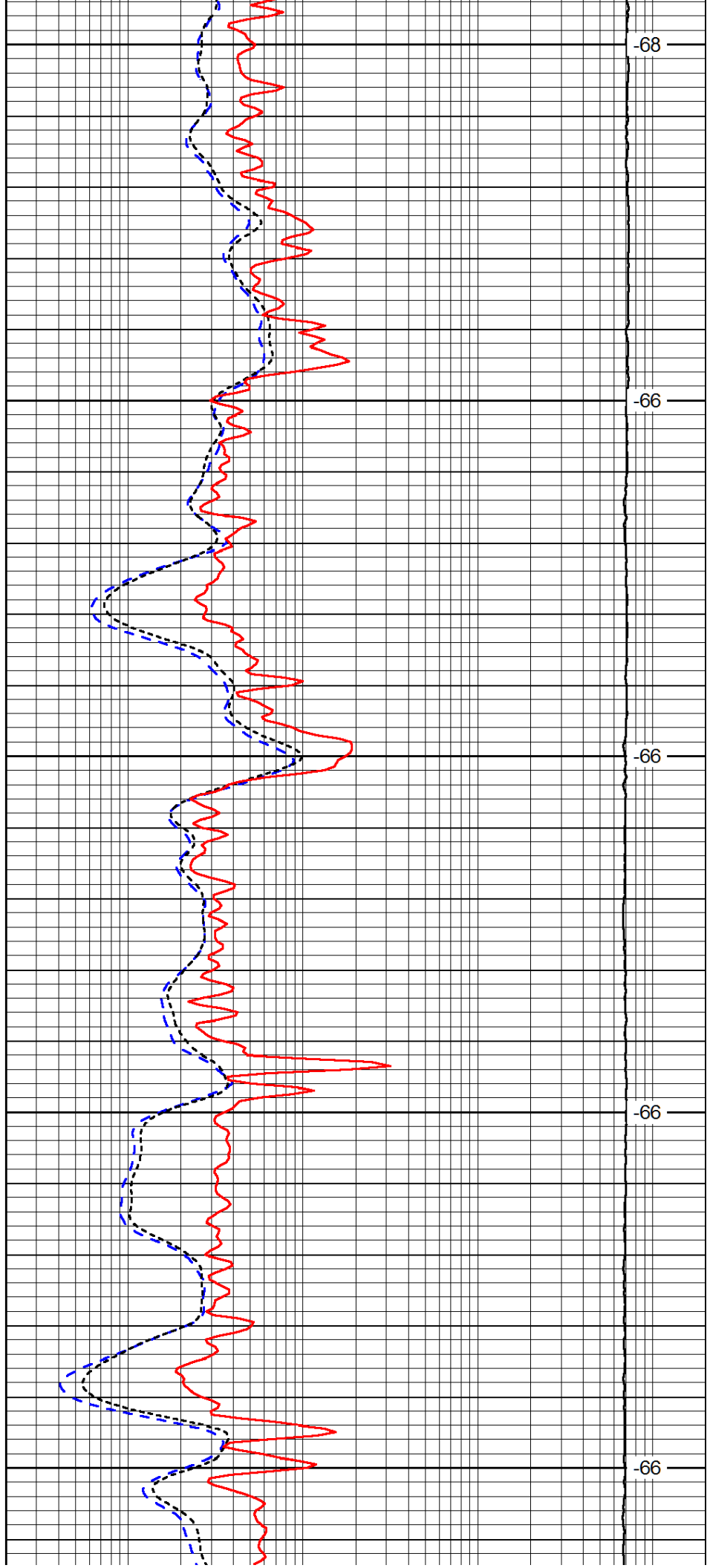
-68

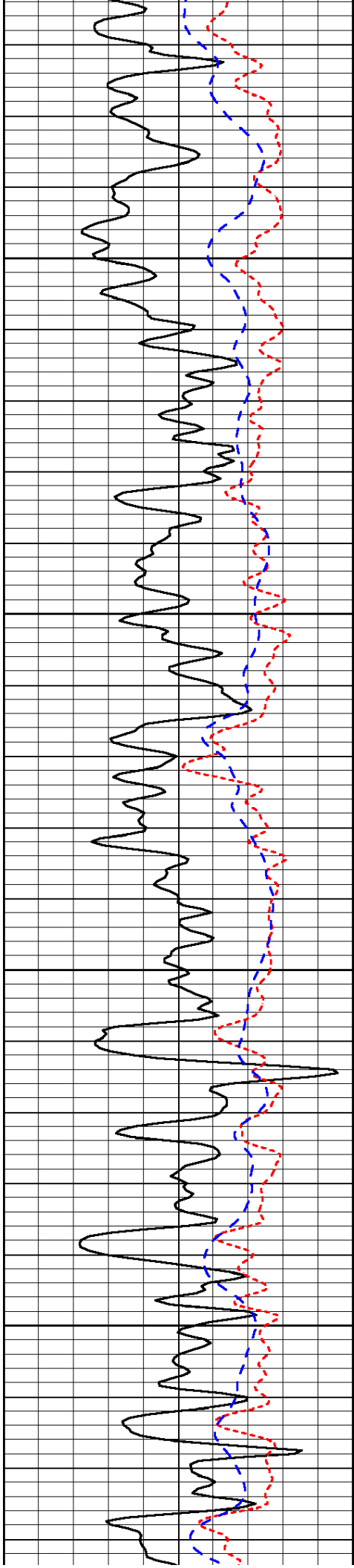
-66

-66

-66

-66



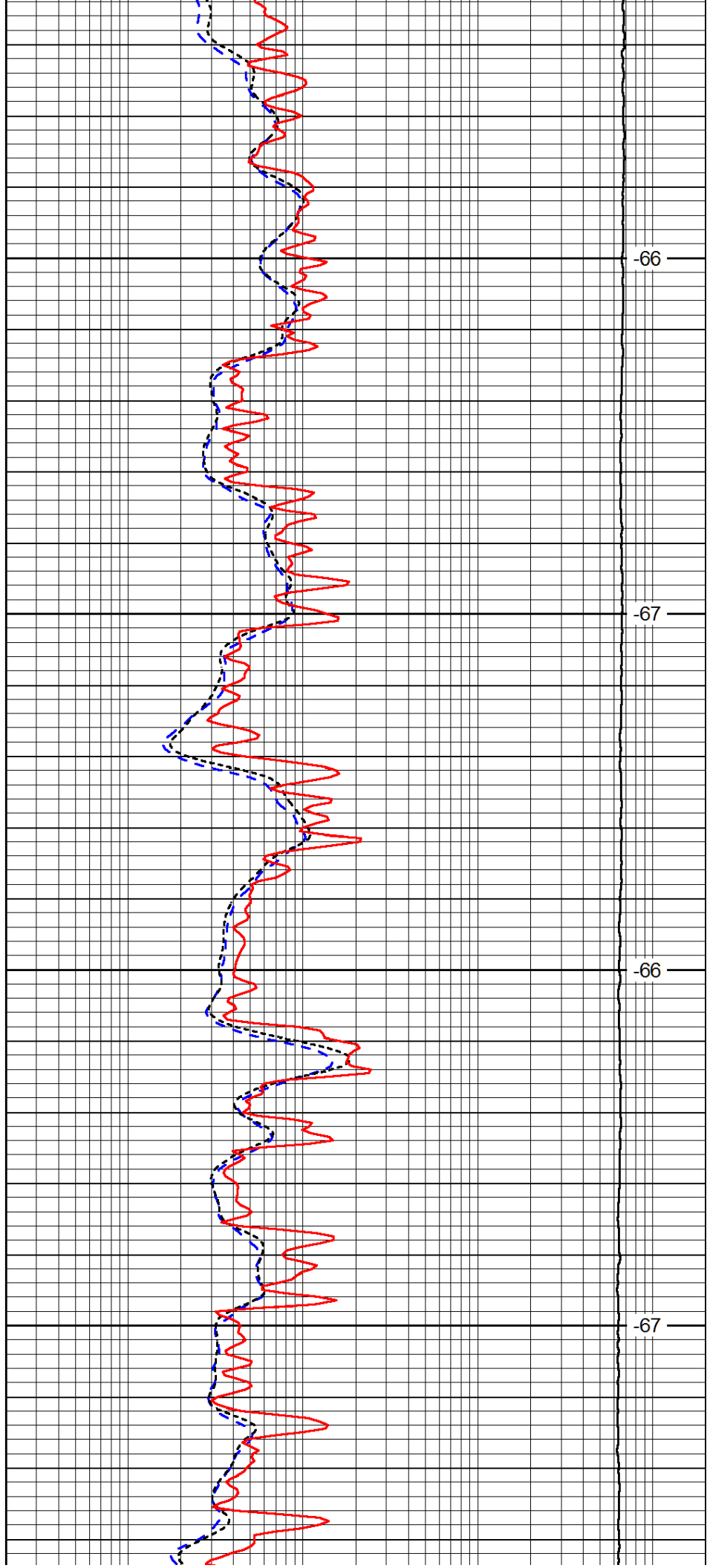


2200

2250

2300

2350

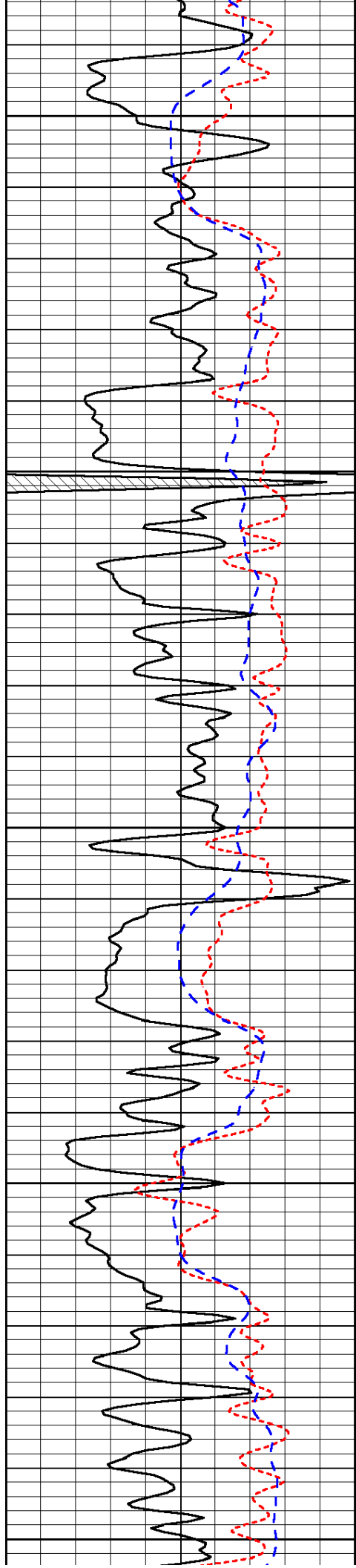


-66

-67

-66

-67



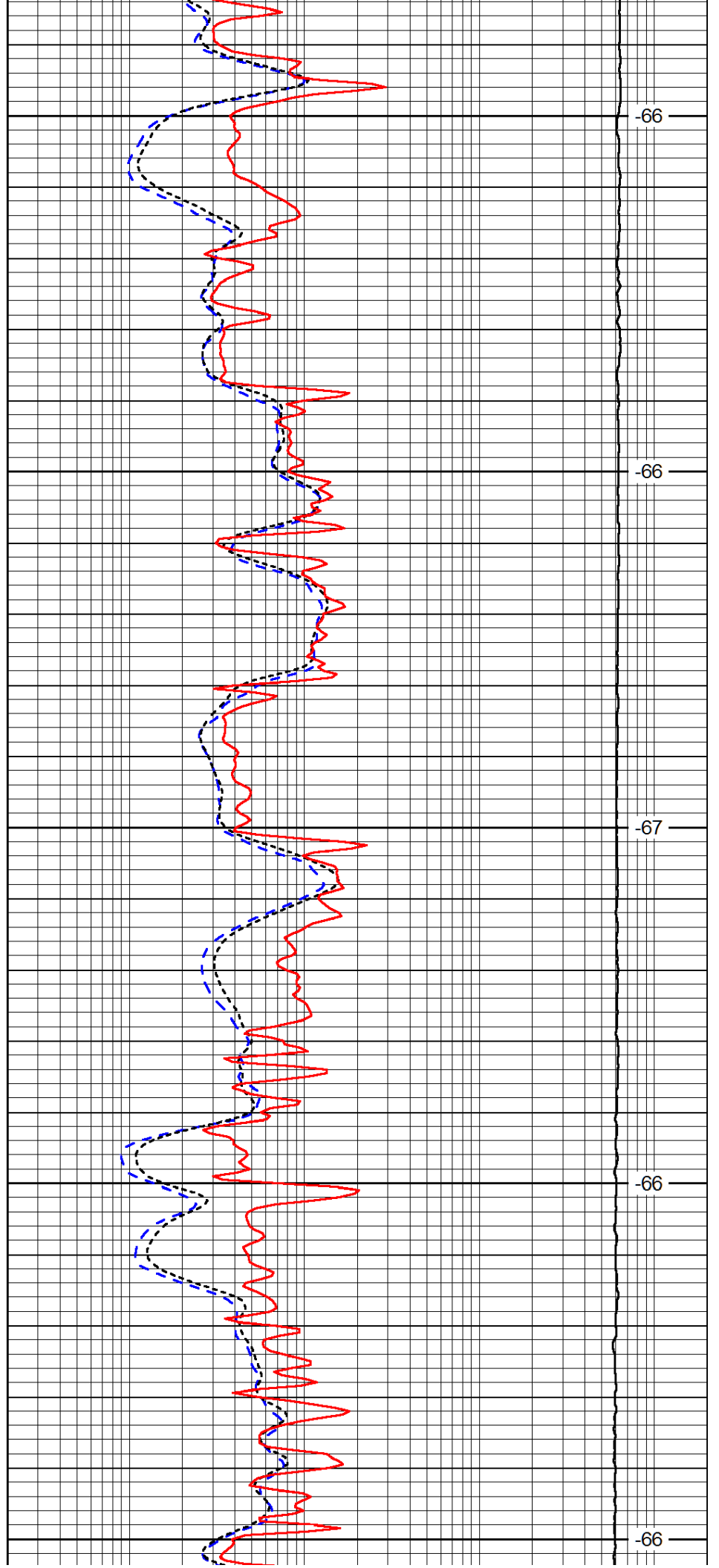
2400

2450

2500

2550

2600



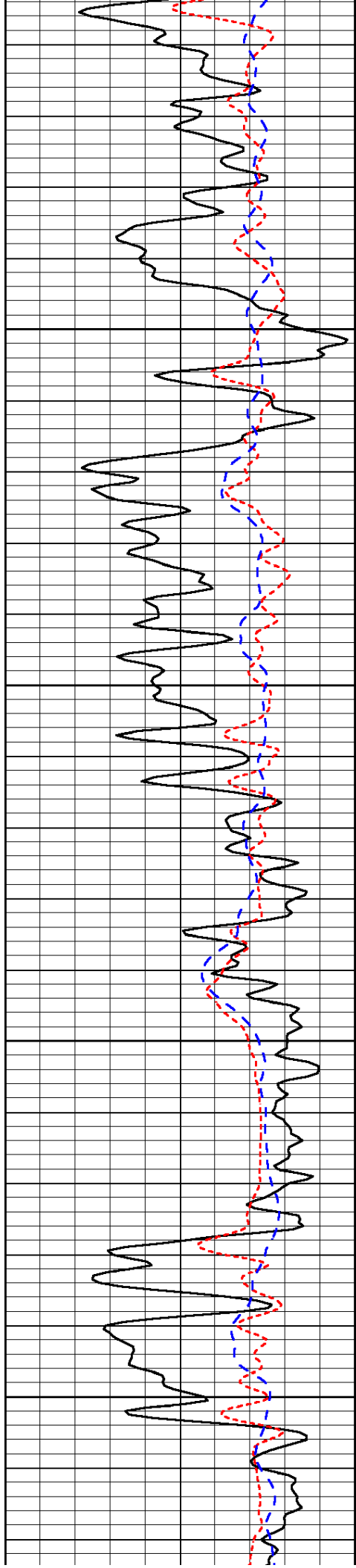
-66

-66

-67

-66

-66

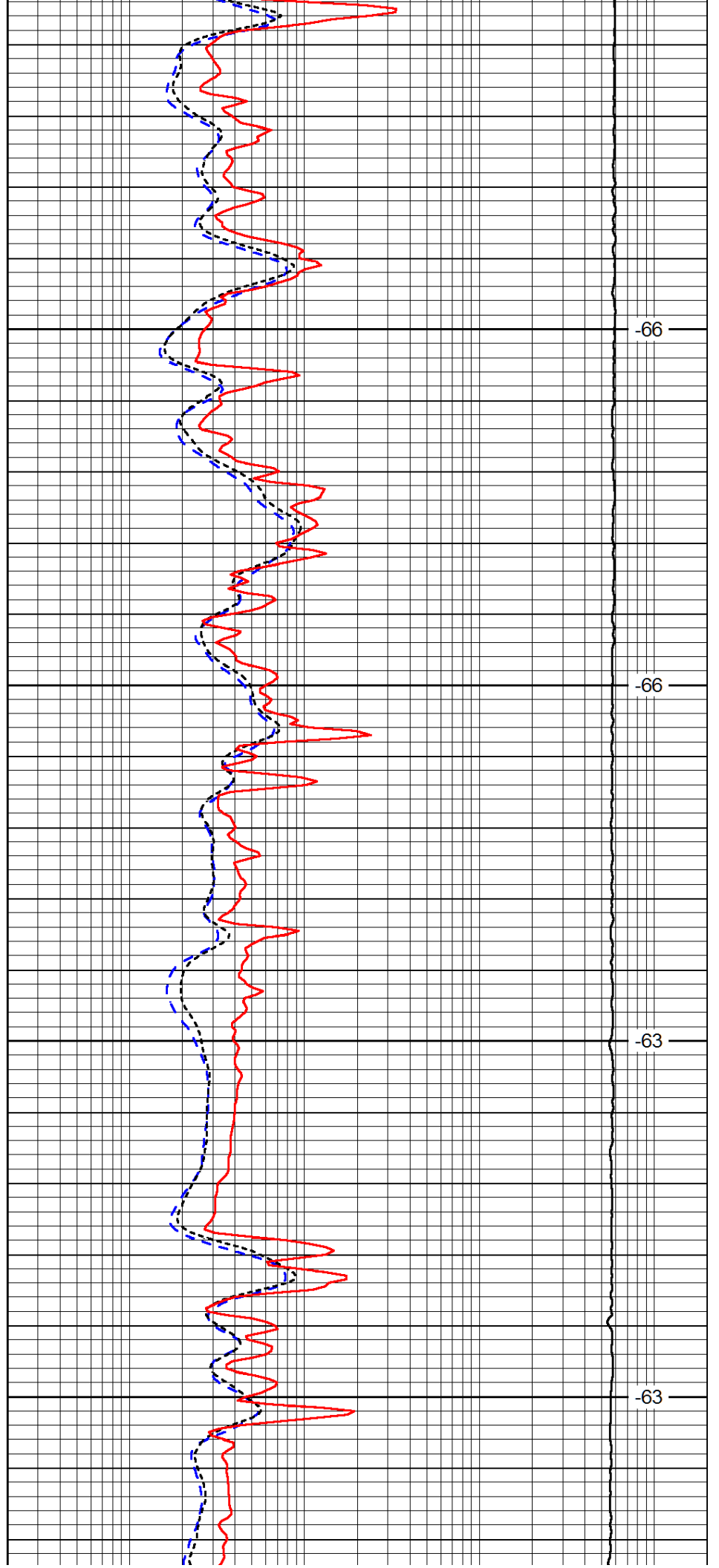


2650

2700

2750

2800

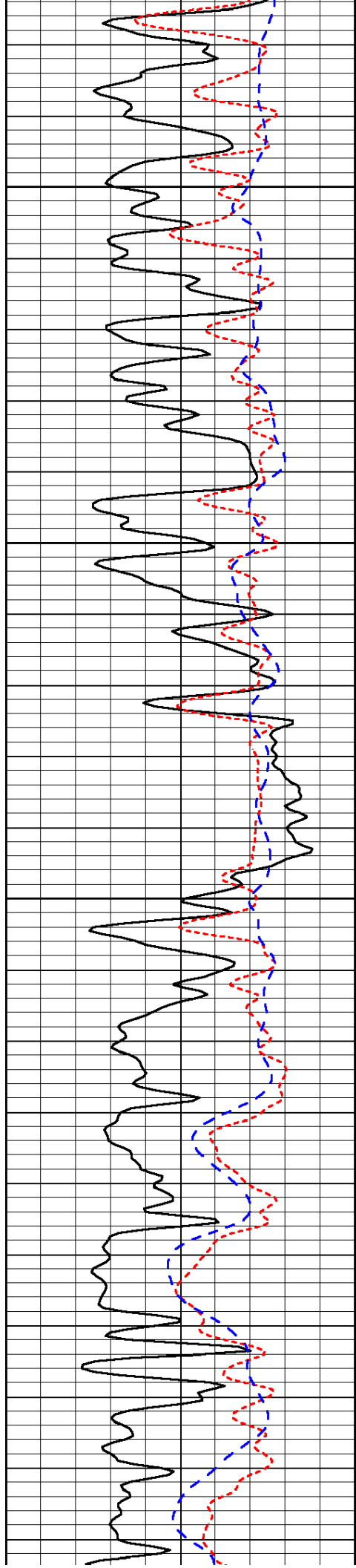


-66

-66

-63

-63

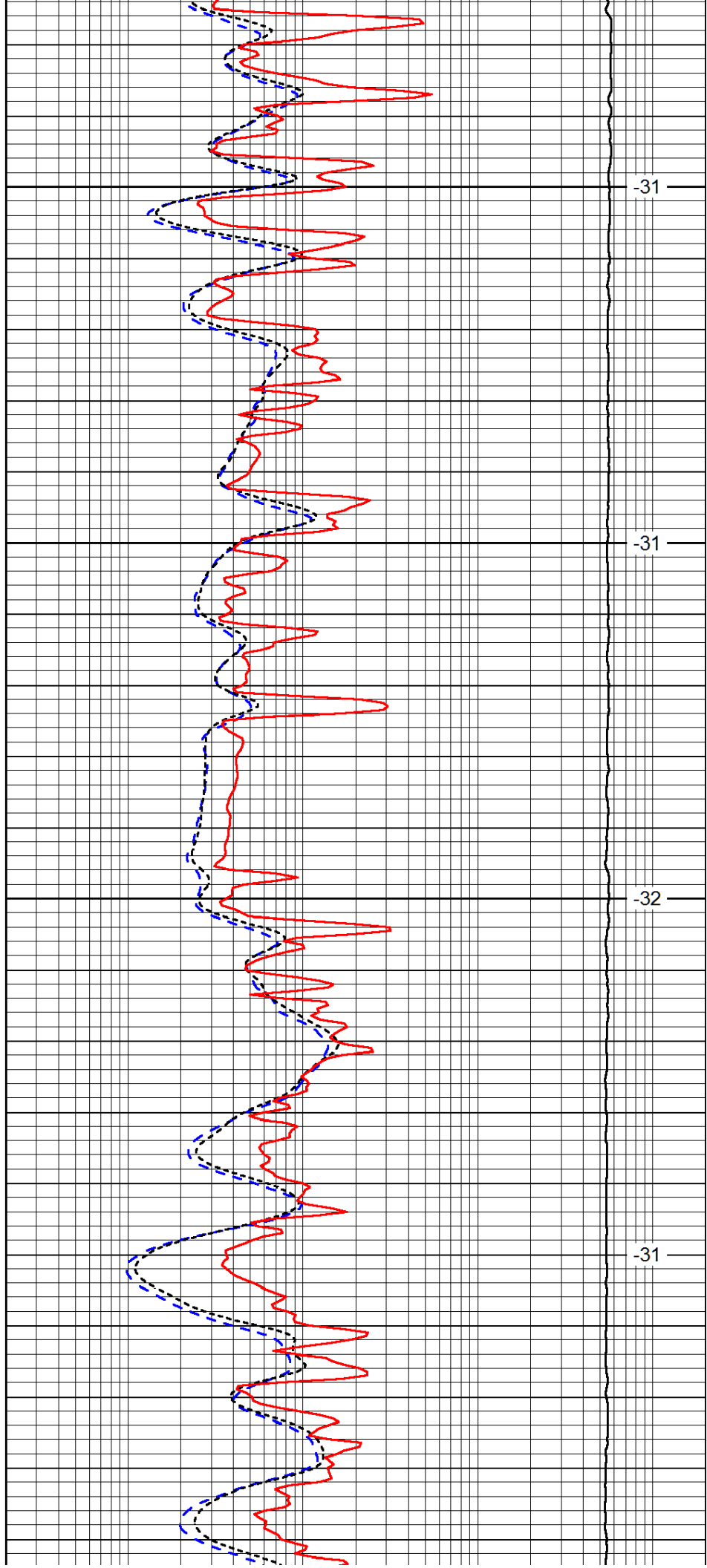


2850

2900

2950

3000

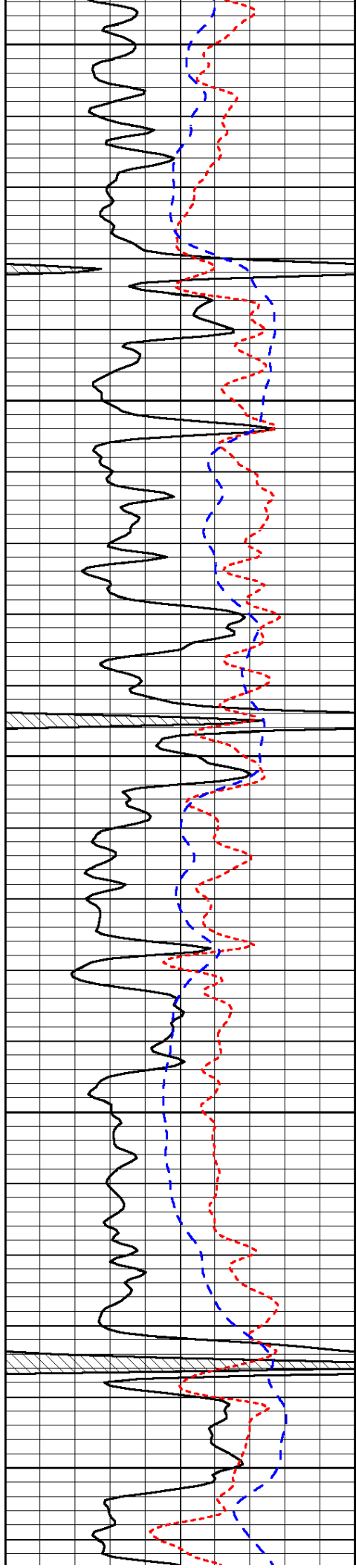


-31

-31

-32

-31



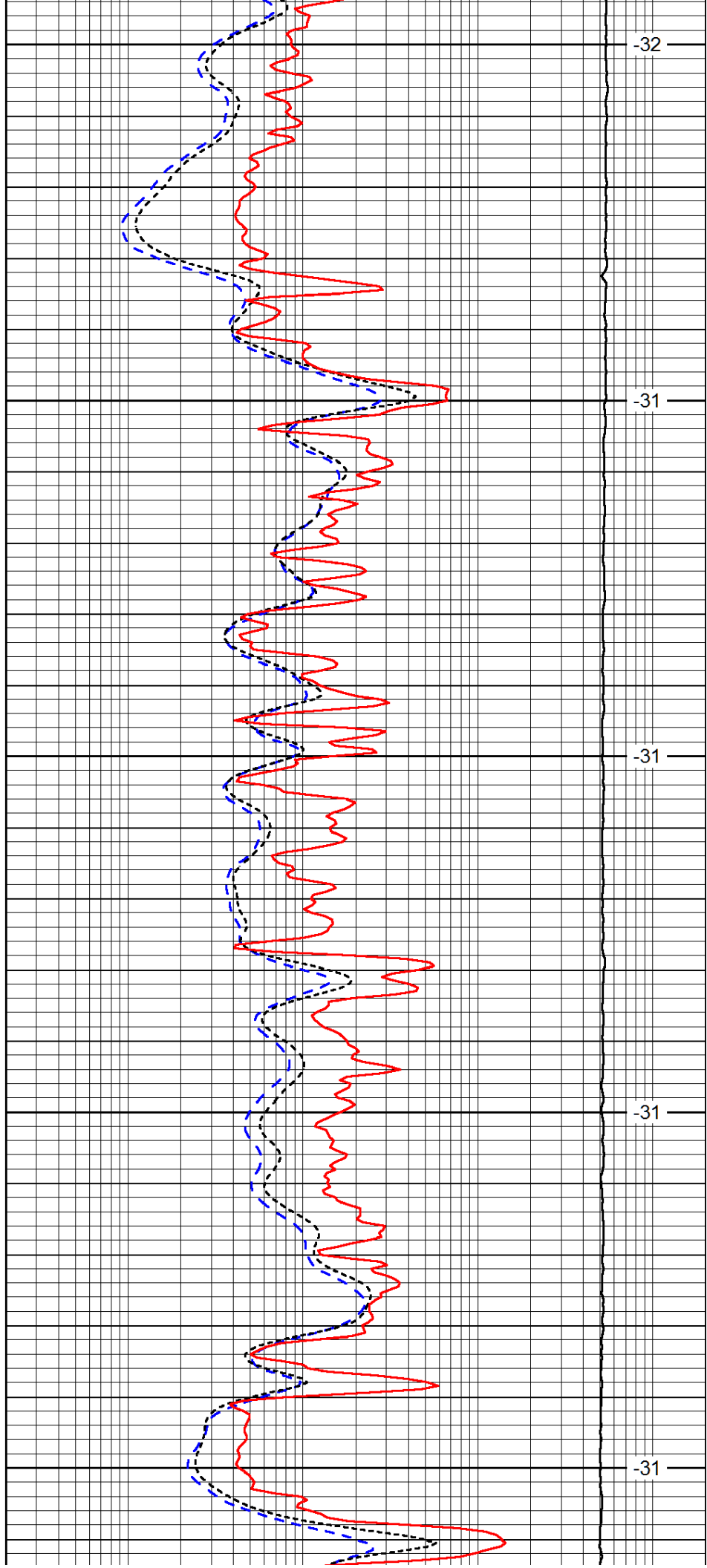
3050

3100

3150

3200

3250



-32

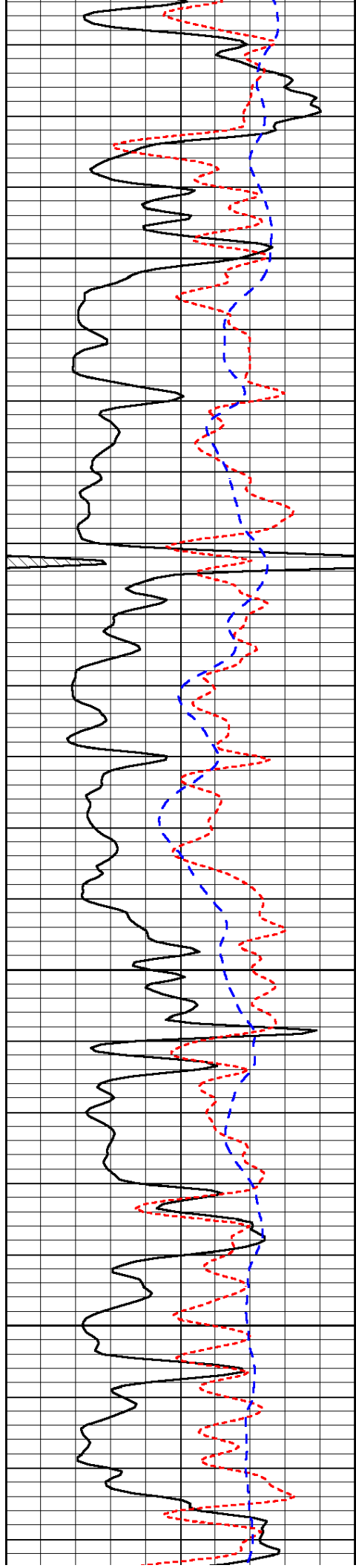
-31

-31

-31

-31



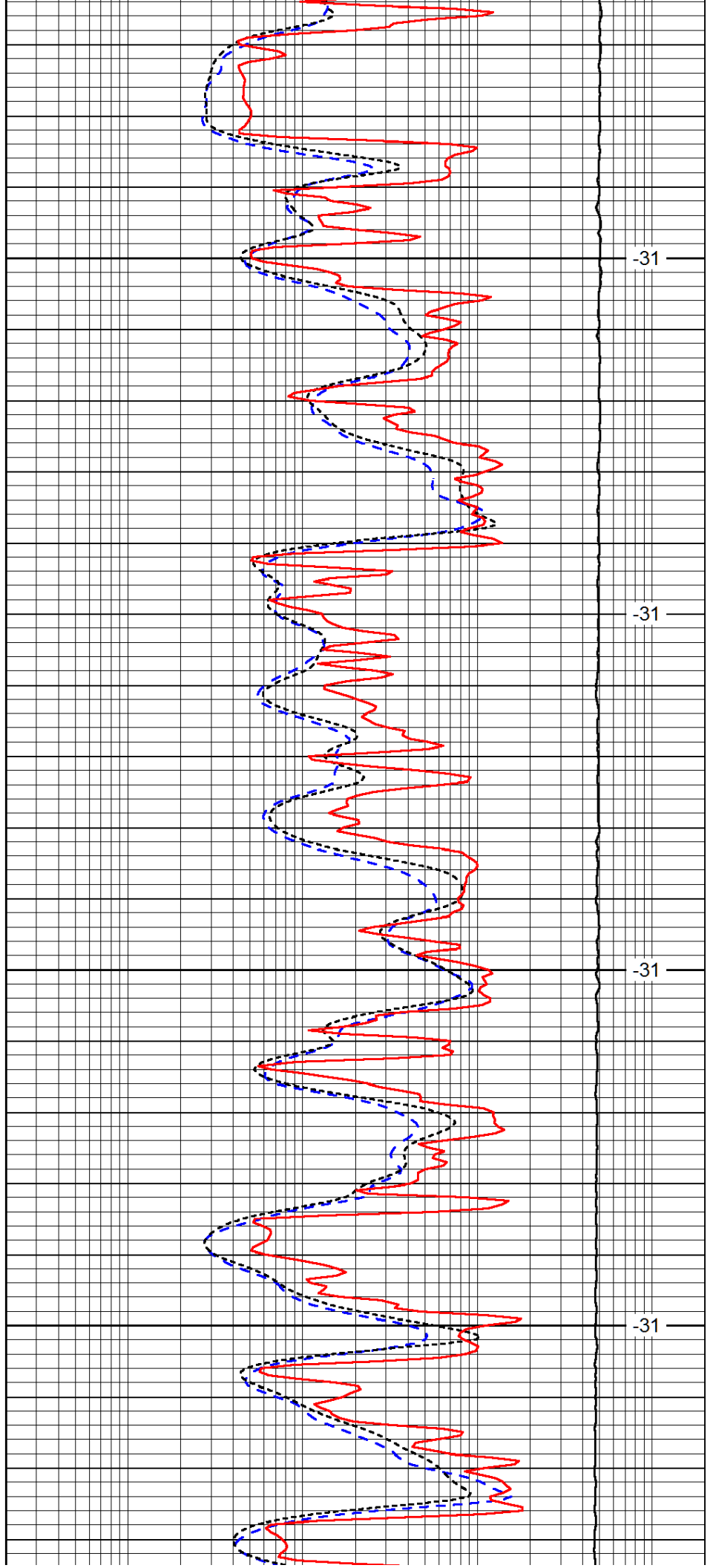


3300

3350

3400

3450

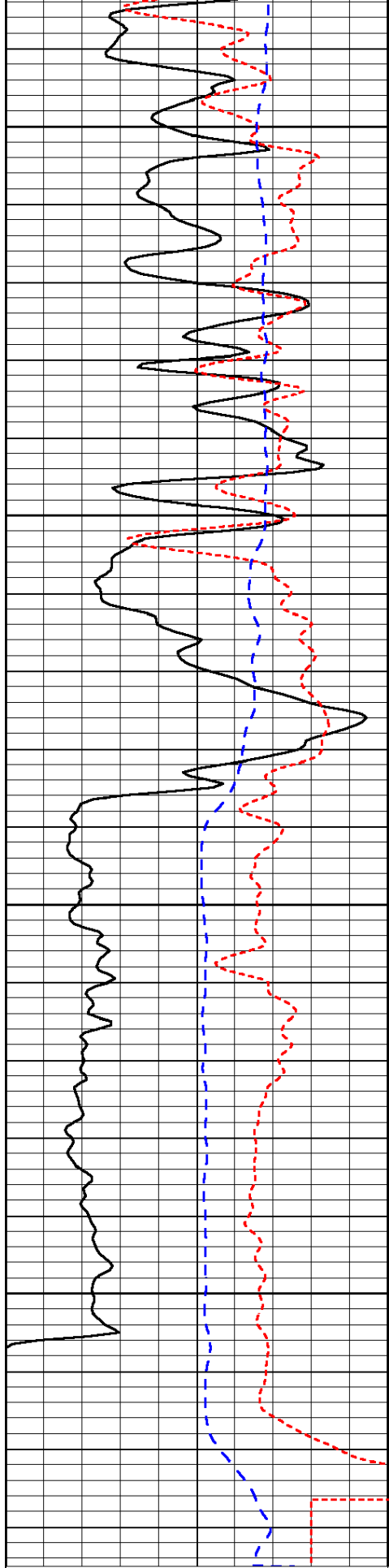


-31

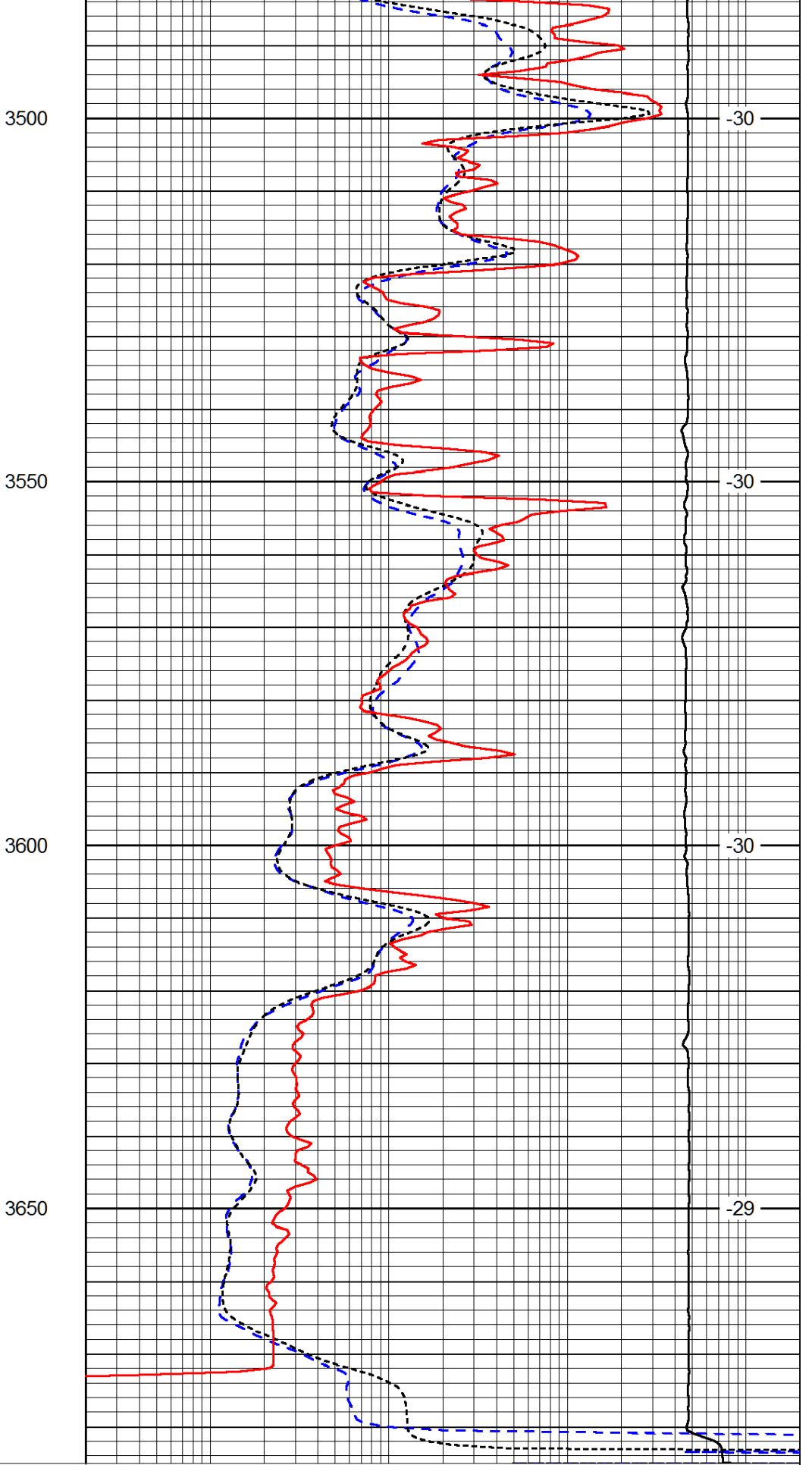
-31

-31

-31



0	Gamma Ray (GAPI)	150
-160	RXO/RT	40
-200	SP (mV)	0



0.2	Deep Resistivity (Ohm-m)	2000
0.2	Medium Resistivity (Ohm-m)	2000
0.2	Shallow Resistivity (Ohm-m)	2000
10000	Line Tension (lb)	0

