



**COMPLETION  
& PRODUCTION  
SERVICES CO.**

**COMPENSATED  
DENSITY/NEUTRON  
LOG**

Company ANDERSON ENERGY, INC.  
Well PELTON "A" #2  
Field WILDCAT  
County ROOKS  
State KANSAS

Company ANDERSON ENERGY, INC.  
Well PELTON "A" #2  
Field WILDCAT  
County ROOKS State KANSAS

Location: 1250' FSL & 2000' FWL  
SEC 23 TWP 10S RGE 19W  
Permanent Datum GROUND LEVEL Elevation 2131  
Log Measured From KELLY BUSHING 8' A.G.L.  
Drilling Measured From KELLY BUSHING  
Other Services DILMEL  
Elevation K.B. 2139  
D.F. 2137  
G.L. 2131

Date	4/7/13		
Run Number	ONE		
Depth Driller	3738		
Depth Logger	3736		
Bottom Logged Interval	3712		
Top Log Interval	3000		
Casing Driller	8 5/8" @ 306		
Casing Logger	305		
Bit Size	7 7/8"		
Type Fluid in Hole	CHEMICAL MUD	CHLORIDES 6000 PPM	
Density / Viscosity	9.3/45		
pH / Fluid Loss	8.5/9.2		
Source of Sample	FLOWLINE		
Rm @ Meas. Temp	.80 @ 79F		
Rmt @ Meas. Temp	.60 @ 79F		
Rmc @ Meas. Temp	.96 @ 79F		
Source of Rmf / Rmc	MEASUREMENT		
Rm @ BHT	.55 @ 114F		
Time Circulation Stopped	2 HOURS		
Time Logger on Bottom			
Maximum Recorded Temperature	114F		
Equipment Number	4010		
Location	HAYS, KANSAS		
Recorded By	JASON CAPPELLUCCI		
Witnessed By	ROGER MARTIN		

<<< Fold Here >>>

All interpretations are opinions based on inferences from electrical or other measurements and we cannot and do not guarantee the accuracy or correctness of any interpretation, and we shall not, except in the case of gross or willful negligence on our part, be liable or responsible for any loss, costs, damages, or expenses incurred or sustained by anyone resulting from any interpretation made by any of our officers, agents or employees. These interpretations are also subject to our general terms and conditions set out in our current Price Schedule.

**Comments**

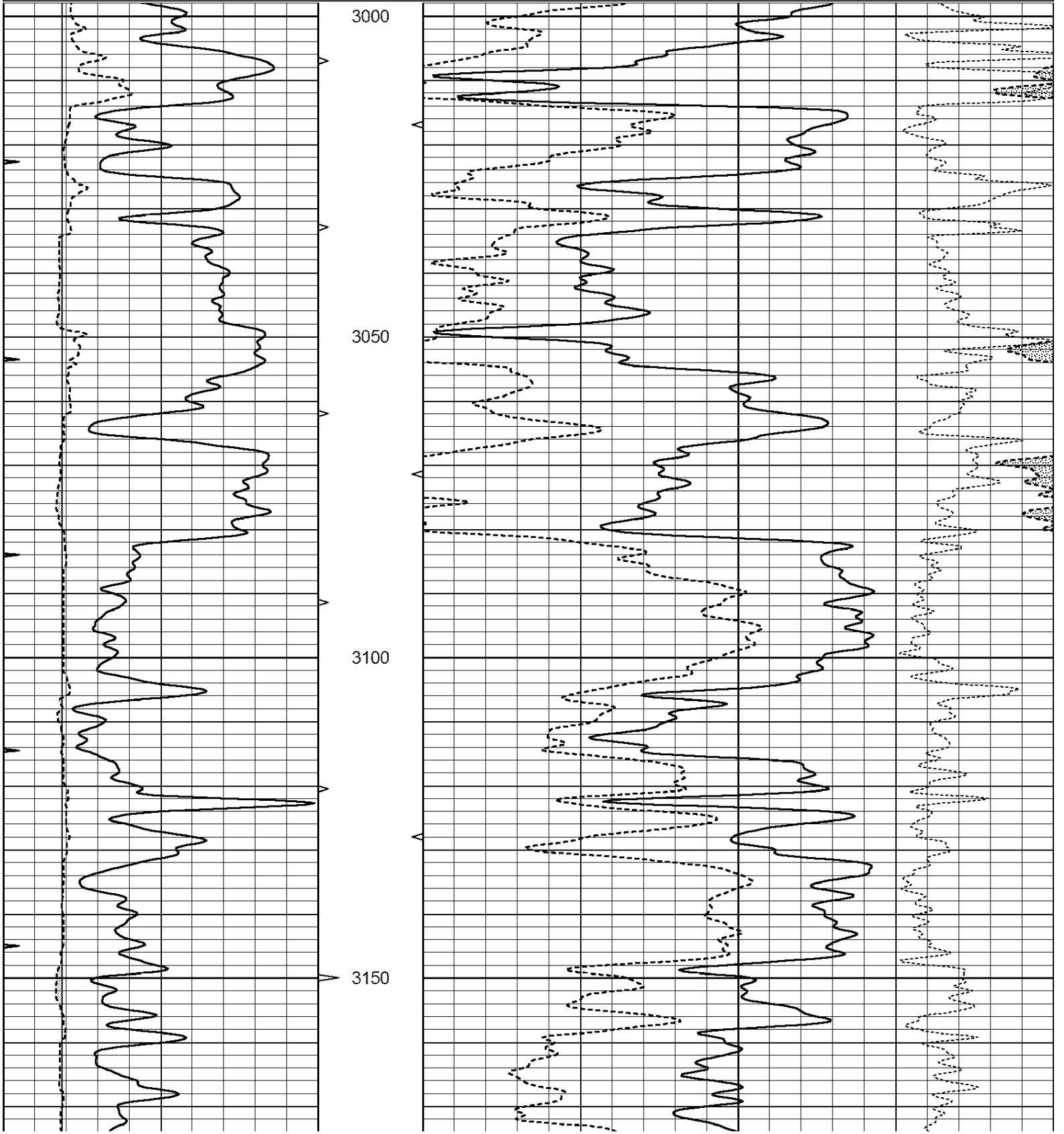
THANK YOU FOR USING NABORS, HAYS, KS. (785) 628-6395  
DIRECTIONS:  
SALINE RIVER RD. & 183 HWY - 4 1/2 W. - N. TO CURVE WEST  
STAY W. TO RD. 11 - N. TO RD. CC - 1/2 E. - N. INTO

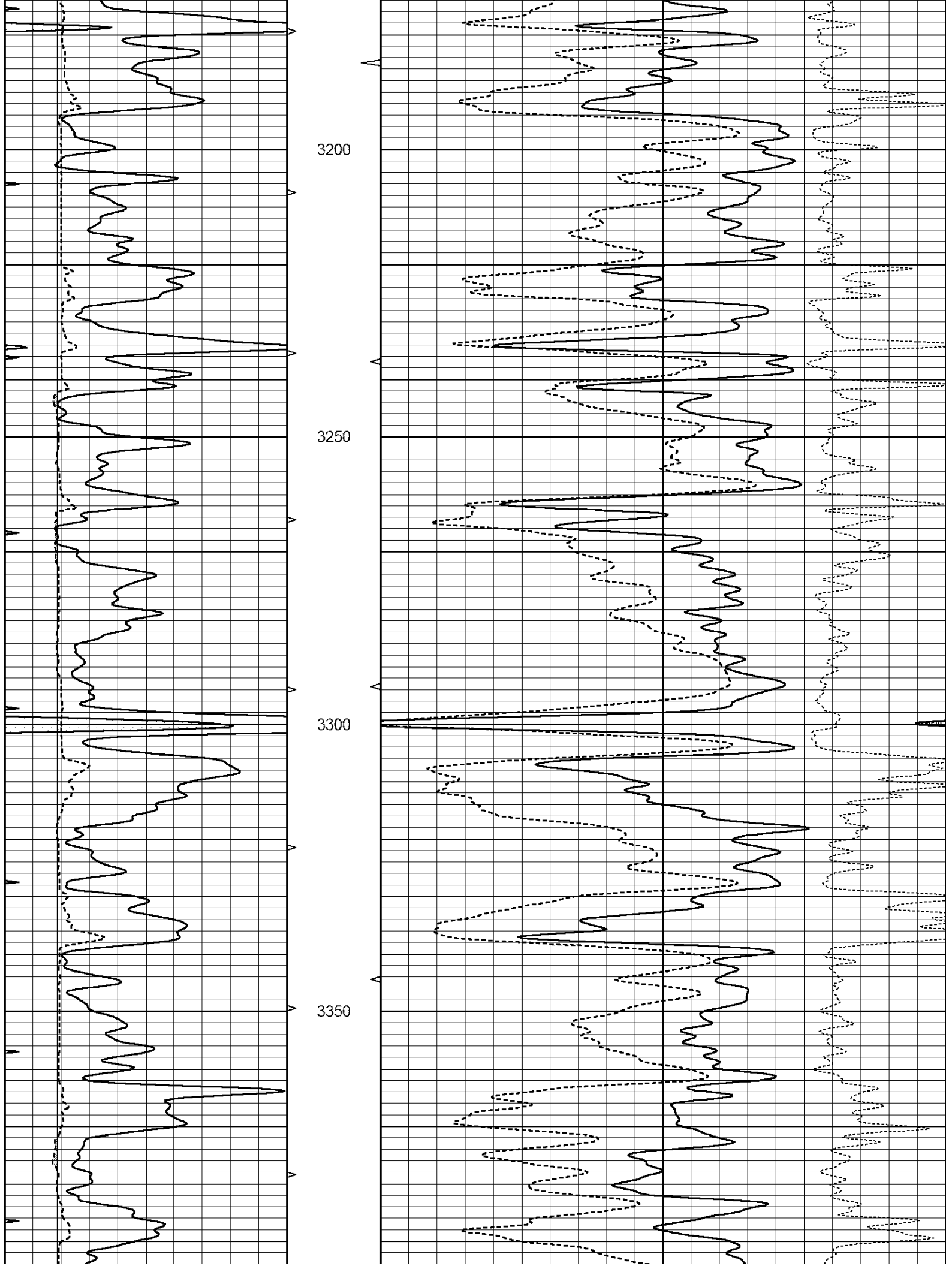


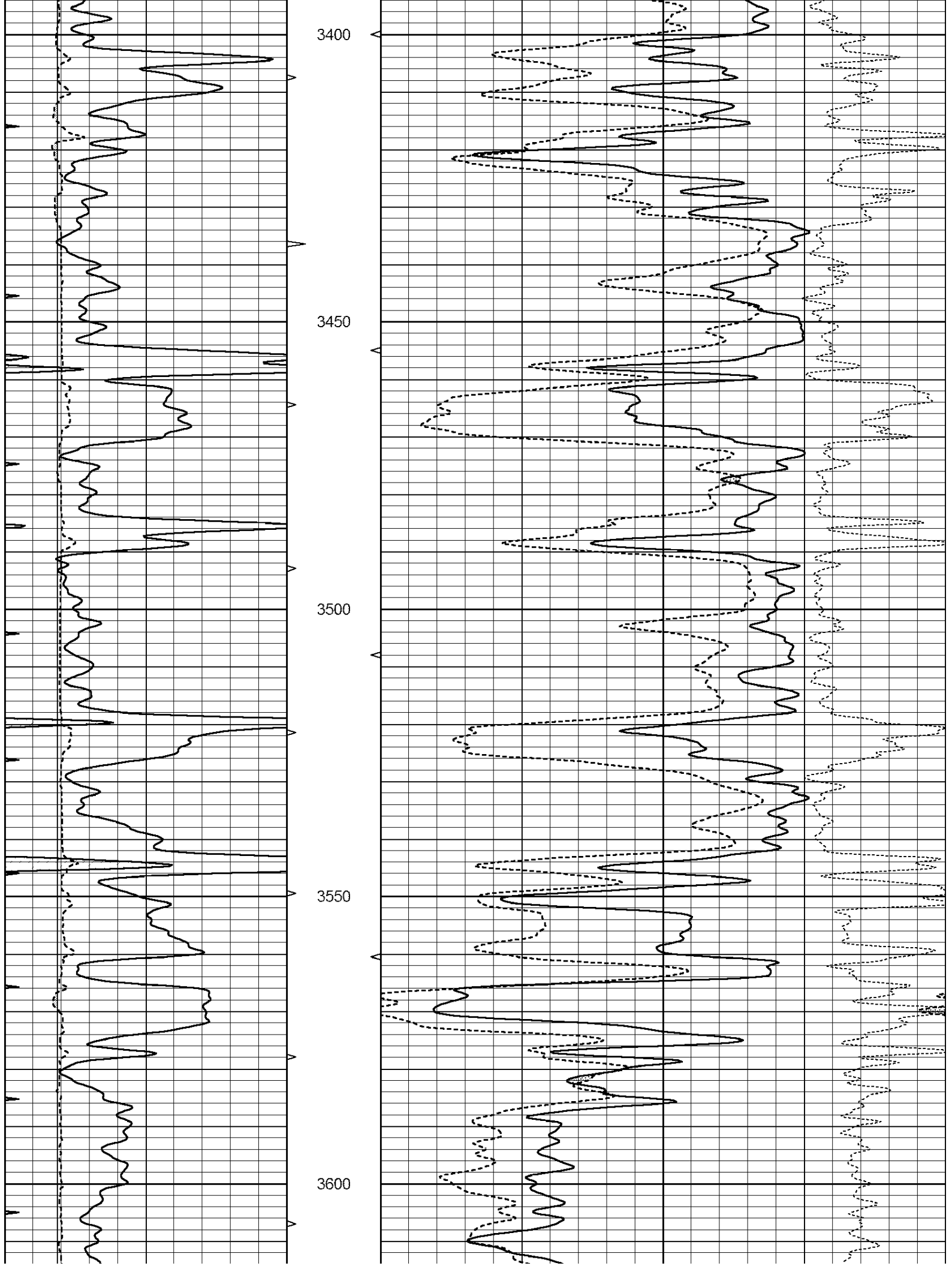
**MAIN SECTION**

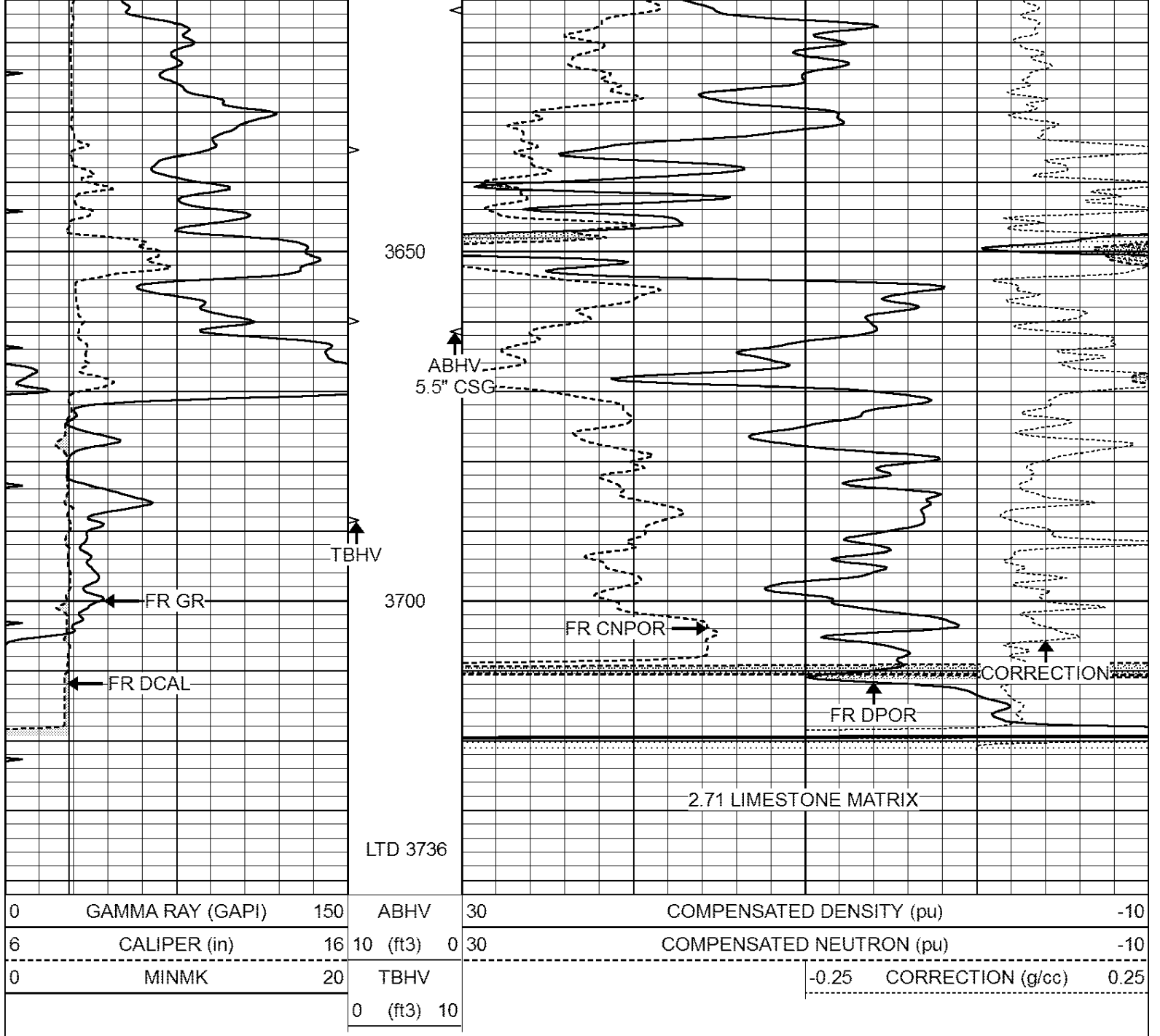
Database File: 010866ddn.db  
 Dataset Pathname: pass3.1  
 Presentation Format: den\_neu  
 Dataset Creation: Sun Apr 07 02:31:49 2013 by Calc Open-Cased 090629  
 Charted by: Depth in Feet scaled 1:240

0	GAMMA RAY (GAPI)	150	ABHV	30	COMPENSATED DENSITY (pu)	-10
6	CALIPER (in)	16	10 (ft3)	0 30	COMPENSATED NEUTRON (pu)	-10
0	MINMK	20	TBHV		-0.25 CORRECTION (g/cc)	0.25
			0 (ft3)	10		





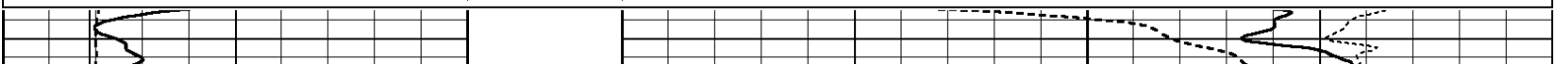


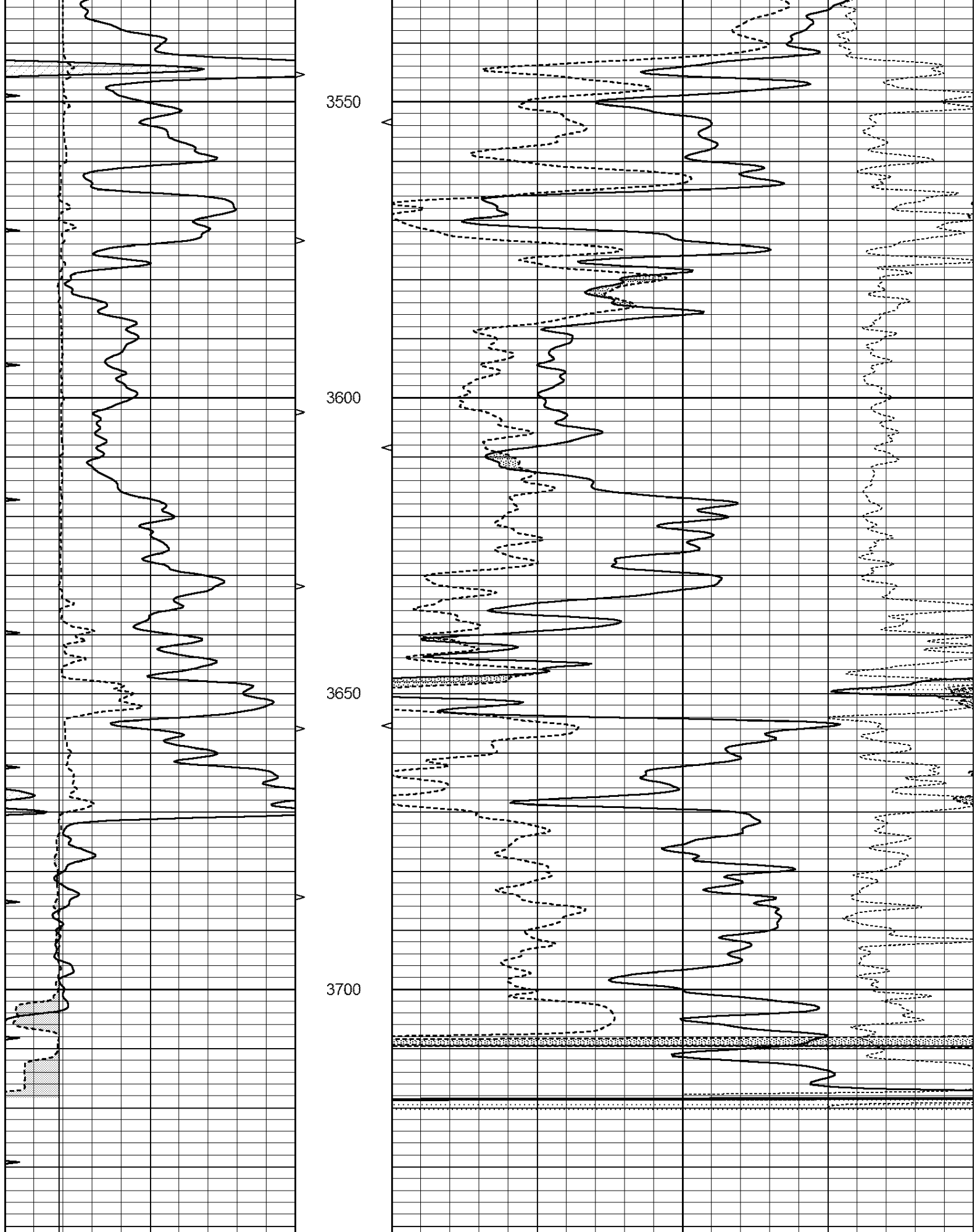


# REPEAT SECTION

Database File: 010866ddn.db  
 Dataset Pathname: pass2.2  
 Presentation Format: den\_neu  
 Dataset Creation: Sun Apr 07 02:30:52 2013 by Calc Open-Cased 090629  
 Charted by: Depth in Feet scaled 1:240

0	GAMMA RAY (GAPI)	150	ABHV	30	COMPENSATED DENSITY (pu)	-10
6	CALIPER (in)	16	10 (ft3)	0 30	COMPENSATED NEUTRON (pu)	-10
0	MINMK	20	TBHV		-0.25	CORRECTION (g/cc) 0.25
			0 (ft3)	10		





3550

3600

3650

3700

0	GAMMA RAY (GAPI)	150	ABHV	30	COMPENSATED DENSITY (pu)	-10
6	CALIPER (in)	16	10 (ft3)	0 30	COMPENSATED NEUTRON (pu)	-10
0	MINI-MAX	20	TRUN	0.05	CORRECTION (slc)	0.05

### Calibration Report

Database File: 010866ddn.db  
 Dataset Pathname: pass3.1  
 Dataset Creation: Sun Apr 07 02:31:49 2013 by Calc Open-Cased 090629

### Dual Induction Calibration Report

Serial-Model:	PROBE8-DILG
Surface Cal Performed:	Fri Aug 01 06:33:19 2008
Downhole Cal Performed:	Mon Jul 28 11:08:27 2008
After Survey Verification Performed:	Mon Jul 28 11:08:27 2008

#### Surface Calibration

Loop:	Readings			References			Results	
	Air	Loop		Air	Loop		m	b
Deep	0.015	0.648	V	0.000	400.000	mmho/m	632.616	-9.730
Medium	0.029	0.796	V	0.000	464.000	mmho/m	605.049	-17.680
Internal:	Zero	Cal		Zero	Cal		m	b
Deep	0.017	0.657	V	0.000	400.000	mmho/m	625.153	-10.619
Medium	0.016	0.757	V	0.000	464.000	mmho/m	625.992	-9.739

#### Downhole Calibration

	Readings			References			Results	
	Zero	Cal		Zero	Cal		m'	b'
Deep	0.000	0.000	mmho/m	2.011	405.777	mmho/m	1.000	0.000
Medium	0.000	0.000	mmho/m	7.590	503.393	mmho/m	1.000	0.000
LL3		7.500	V		1500.000	Ohm-m		
		0.000	V		20.000	Ohm-m		
		-7.200	V		3800.000	mmho-m		

#### After Survey Verification

	Readings			Targets			Results	
	Zero	Cal		Zero	Cal		m'	b'
Deep	0.000	0.000	mmho/m	0.000	0.000	mmho/m	0.000	0.000
Medium	0.000	0.000	mmho/m	0.000	0.000	mmho/m	0.000	0.000
LL3		1.000	Ohm-m		1.000	Ohm-m		
		0.000	Ohm-m		0.000	Ohm-m		
		1.000	mmho-m		1.000	mmho-m		

### Compensated Density Calibration Report

Serial-Model:	GEAR3-GEARHART
Source / Verifier:	143 / 143
Master Calibration Performed:	Fri Jan 04 15:48:16 2013
Before Survey Verification Performed:	
After Survey Verification Performed:	

#### Master Calibration

	Density		Far Detector	Near Detector	
Magnesium	1.710	g/cc	935.36	501.55	cps
Aluminum	2.580	g/cc	209.32	357.01	cps
Spine Angle = 77.21			Density/Spine Ratio = 0.567		
	Size		Reading		

Small Ring	8.00	in	4.29	V
Large Ring	14.00	in	6.24	V

Before Survey Verification				
	Target		Measured	
		g/cc		g/cc
		g/cc		g/cc
		g/cc		g/cc

After Survey Verification				
	Target		Measured	
		g/cc		g/cc
		g/cc		g/cc
		g/cc		g/cc

Compensated Neutron Calibration Report

Serial Number: 6I  
Tool Model: G

CALIBRATION						
	Detector	Readings		Target		Normalization
	Short Space	1.00	cps	1.00	cps	1.0000
	Long Space	1.00	cps	1.00	cps	1.0000

PRE-SURVEY VERIFICATION						
	Detector	Readings		Measured		Target
1)	Short Space		cps			
	Long Space		cps	pu		pu
2)	Short Space		cps			
	Long Space		cps	pu		
3)	Short Space		cps			
	Long Space		cps	pu		

POST-SURVEY VERIFICATION						
	Detector	Readings		Measured		Target
1)	Short Space		cps			
	Long Space		cps	pu		pu
2)	Short Space		cps			
	Long Space		cps	pu		pu
3)	Short Space		cps			
	Long Space		cps	pu		pu

Gamma Ray Calibration Report

Serial Number: #8  
Tool Model: OPEN  
Performed: Mon Jun 13 16:56:43 2011

Calibrator Value: 150.0      GAPI

Background Reading: 0.0      cps  
Calibrator Reading: 175.0      cps



Sensitivity:

0.8371

GAP/cps