



**COMPLETION
& PRODUCTION
SERVICES CO.**

**MICRO
LOG**

Company ANDERSON ENERGY, INC.
Well PELTON "A" #2
Field WILDCAT
County ROOKS
State KANSAS

Company ANDERSON ENERGY, INC.
Well PELTON "A" #2
Field WILDCAT
County ROOKS State KANSAS

Location: API # : 15-163-24112-0000
1250' FSL & 2000' FWL
SEC 23 TWP 10S RGE 19W
Permanent Datum GROUND LEVEL Elevation 2131
Log Measured From KELLY BUSHING 8' A.G.L.
Drilling Measured From KELLY BUSHING
Other Services
CDL/CNL
DIL
Elevation
K.B. 2139
D.F. 2137
G.L. 2131

Date	4/7/13		
Run Number	TWO		
Depth Driller	3738		
Depth Logger	3736		
Bottom Logged Interval	3734		
Top Log Interval	3000		
Casing Driller	8 5/8" @ 306		
Casing Logger	305		
Bit Size	7 7/8"		
Type Fluid in Hole	CHEMICAL MUD	CHLORIDES 6000 PPM	
Density / Viscosity	9.3/45		
pH / Fluid Loss	8.5/9.2		
Source of Sample	FLOWLINE		
Rm @ Meas. Temp	.80 @ 79F		
Rmt @ Meas. Temp	.60 @ 79F		
Rmc @ Meas. Temp	.96 @ 79F		
Source of Rmf / Rmc	MEASUREMENT		
Rm @ BHT	.55 @ 114F		
Time Circulation Stopped	2 HOURS		
Time Logger on Bottom			
Maximum Recorded Temperature	114F		
Equipment Number	4010		
Location	HAYS, KANSAS		
Recorded By	JASON CAPPELLUCCI		
Witnessed By	ROGER MARTIN		

<<< Fold Here >>>

All interpretations are opinions based on inferences from electrical or other measurements and we cannot and do not guarantee the accuracy or correctness of any interpretation, and we shall not, except in the case of gross or willful negligence on our part, be liable or responsible for any loss, costs, damages, or expenses incurred or sustained by anyone resulting from any interpretation made by any of our officers, agents or employees. These interpretations are also subject to our general terms and conditions set out in our current Price Schedule.

Comments

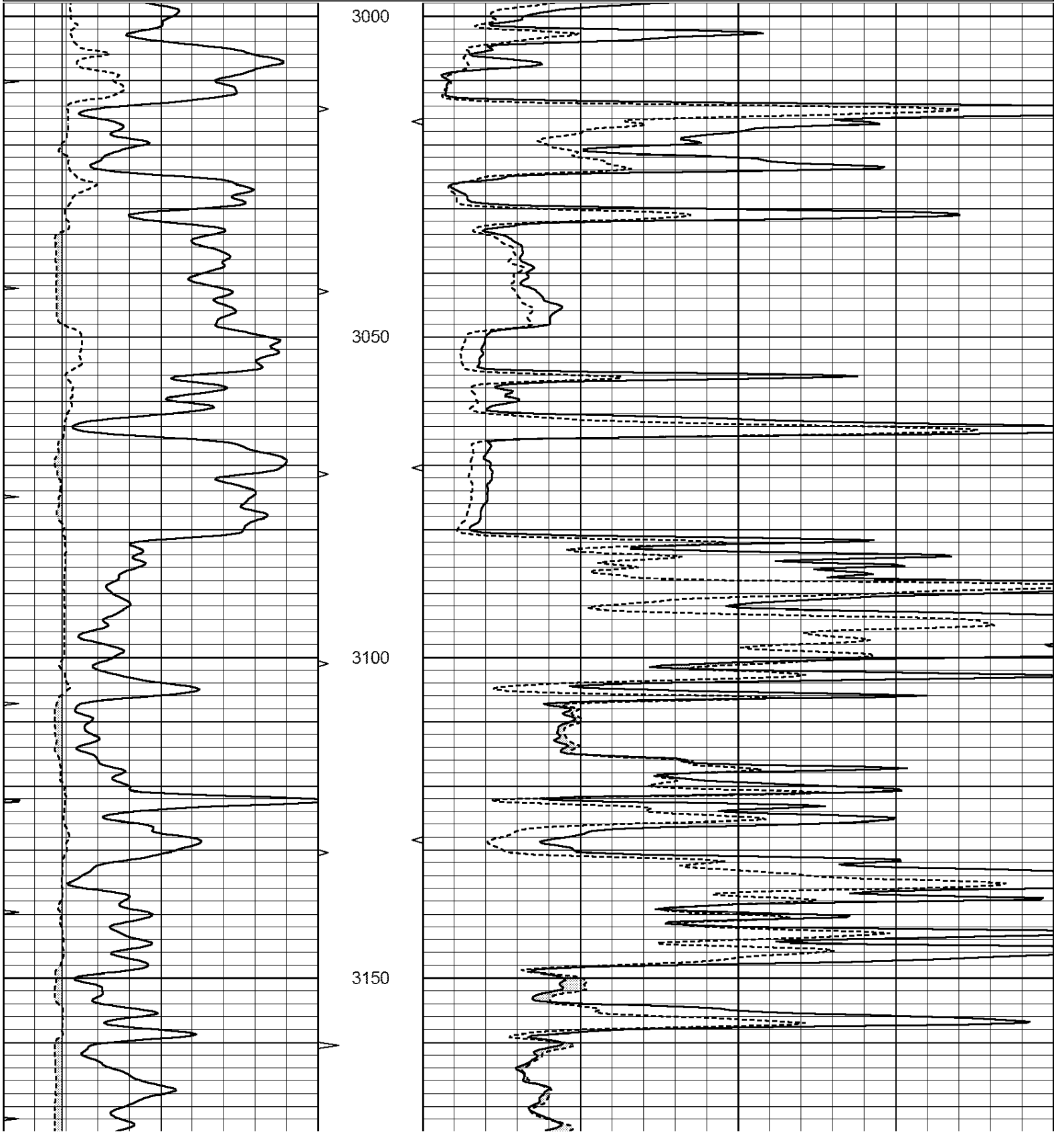
THANK YOU FOR USING NABORS, HAYS, KS. (785) 628-6395
DIRECTIONS:
SALINE RIVER RD. & 183 HWY - 4 1/2 W. - N. TO CURVE WEST
STAY W. TO RD. 11 - N. TO RD. CC - 1/2 E. - N. INTO

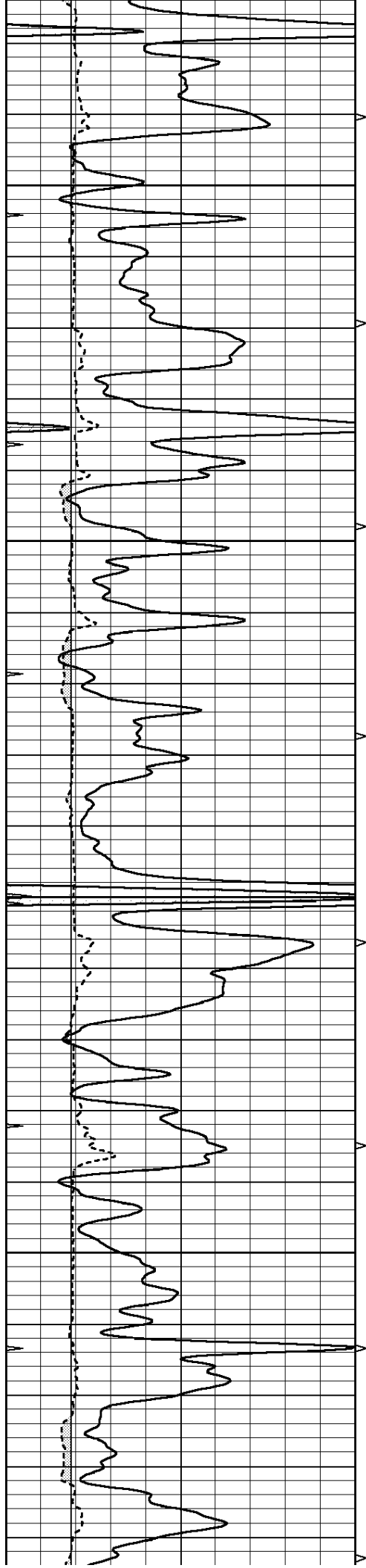


MAIN SECTION

Database File: 010866ddn.db
 Dataset Pathname: pass7.1
 Presentation Format: _micro
 Dataset Creation: Sun Apr 07 04:33:53 2013 by Calc Open-Cased 090629
 Charted by: Depth in Feet scaled 1:240

0	GAMMA RAY (GAPI)	150	ABHV	0	MEL1.5 (Ohm-m)	40
6	CALIPER (in)	16	10 (ft3)	0	MEL2.0 (Ohm-m)	40
0	MINMK	20	TBHV			
			0 (ft3)	10		



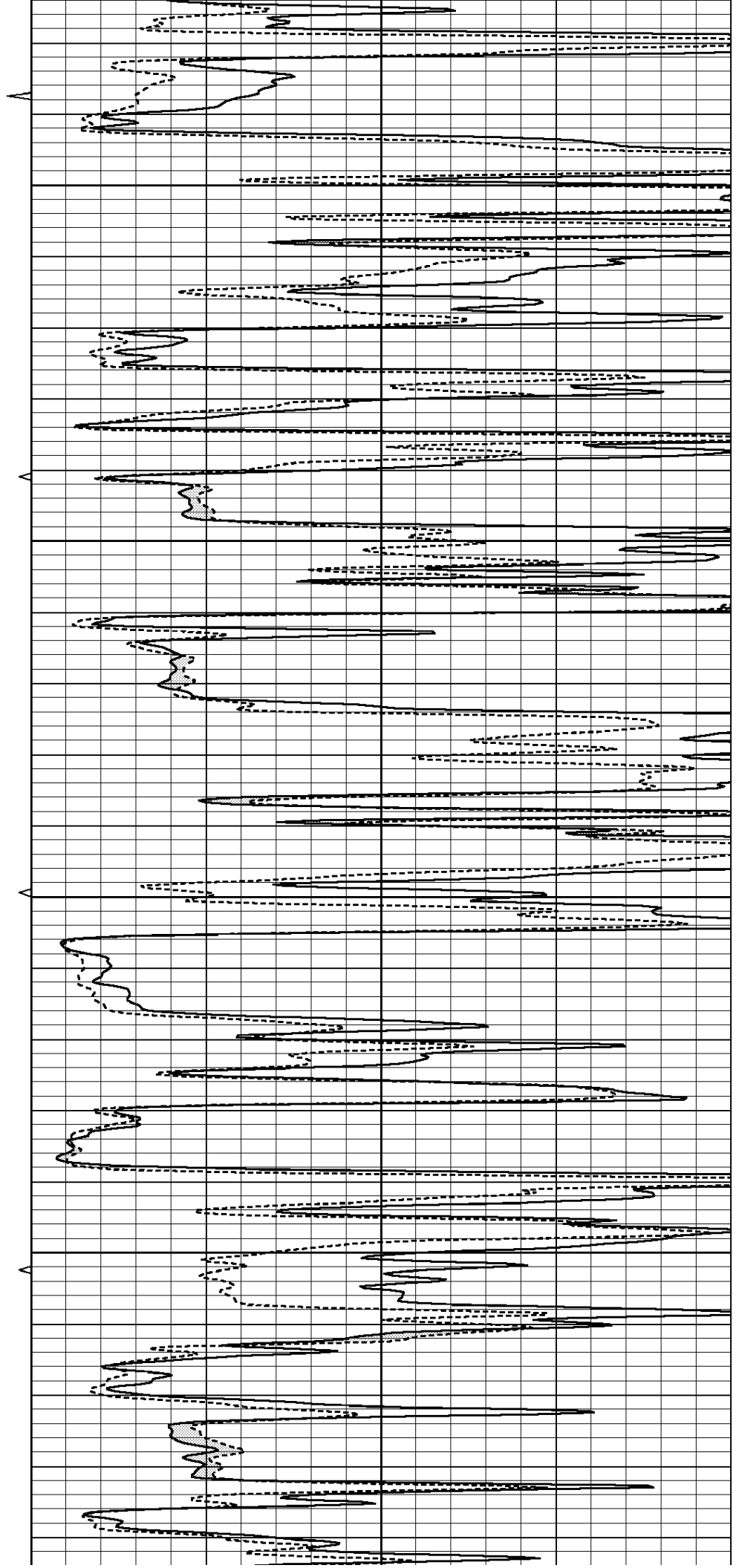


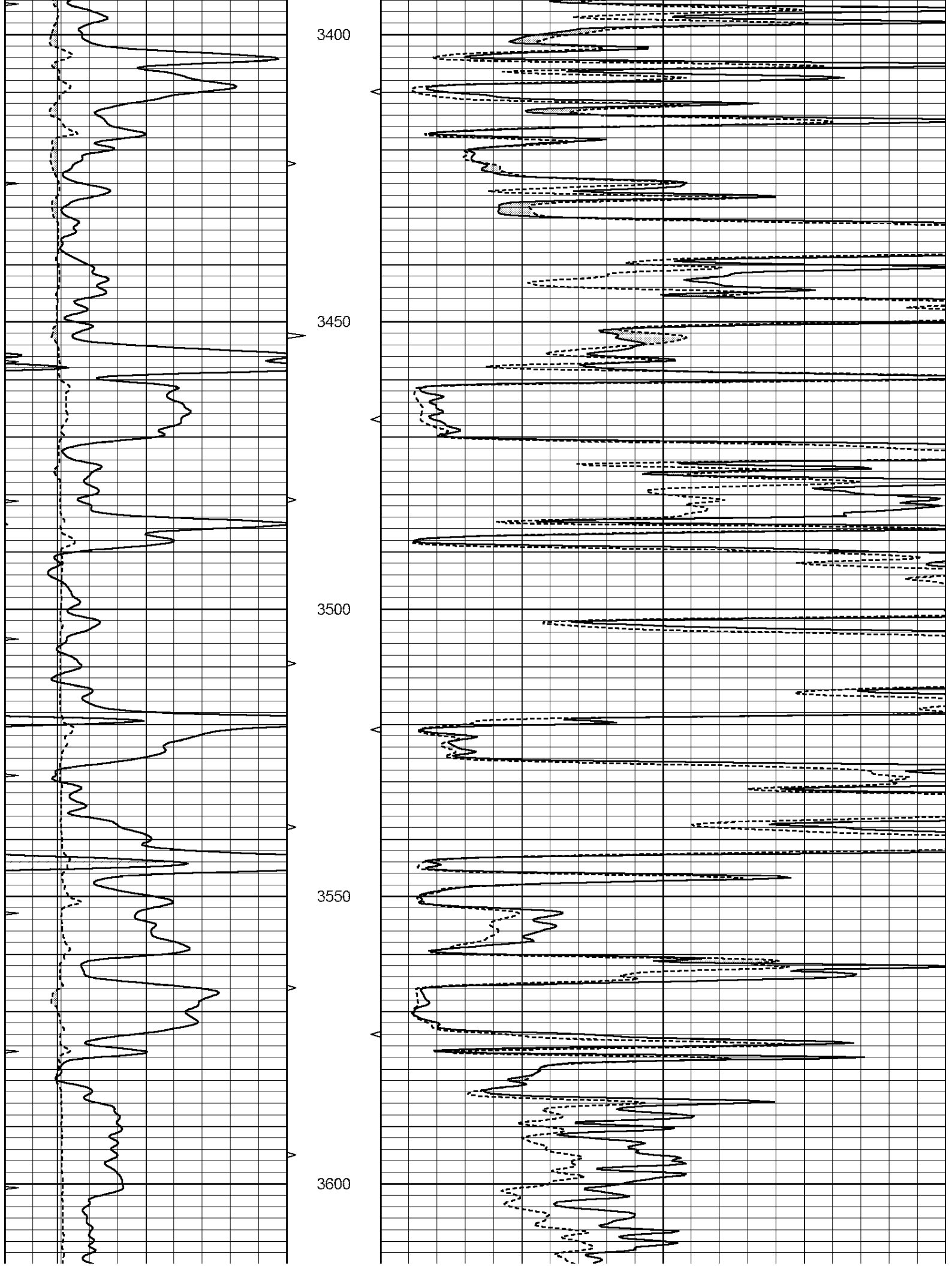
3200

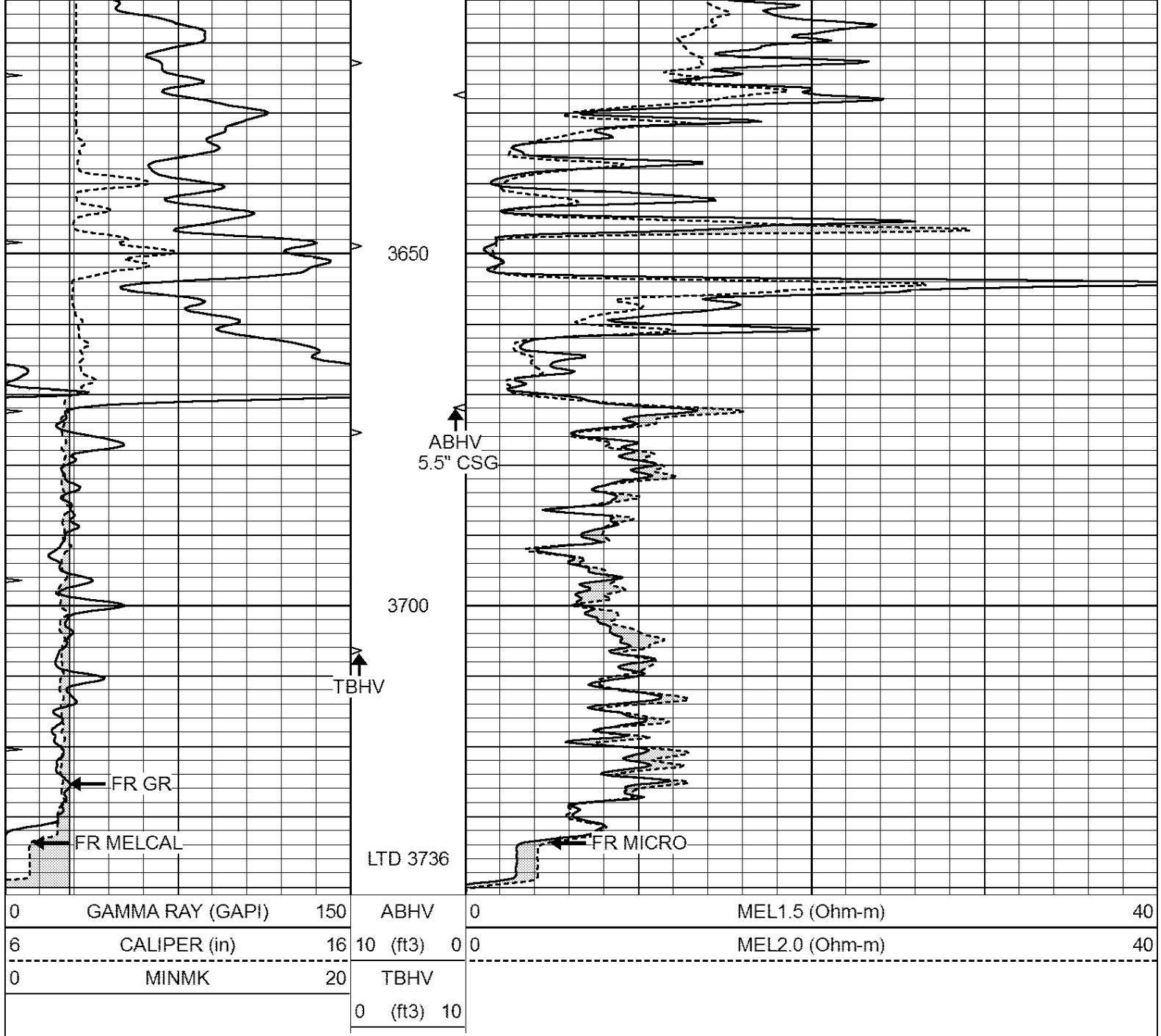
3250

3300

3350



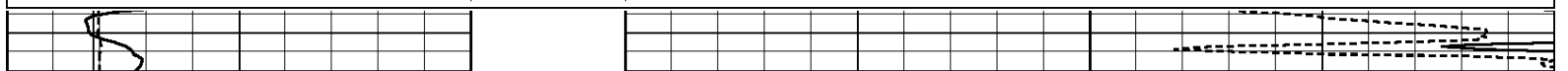


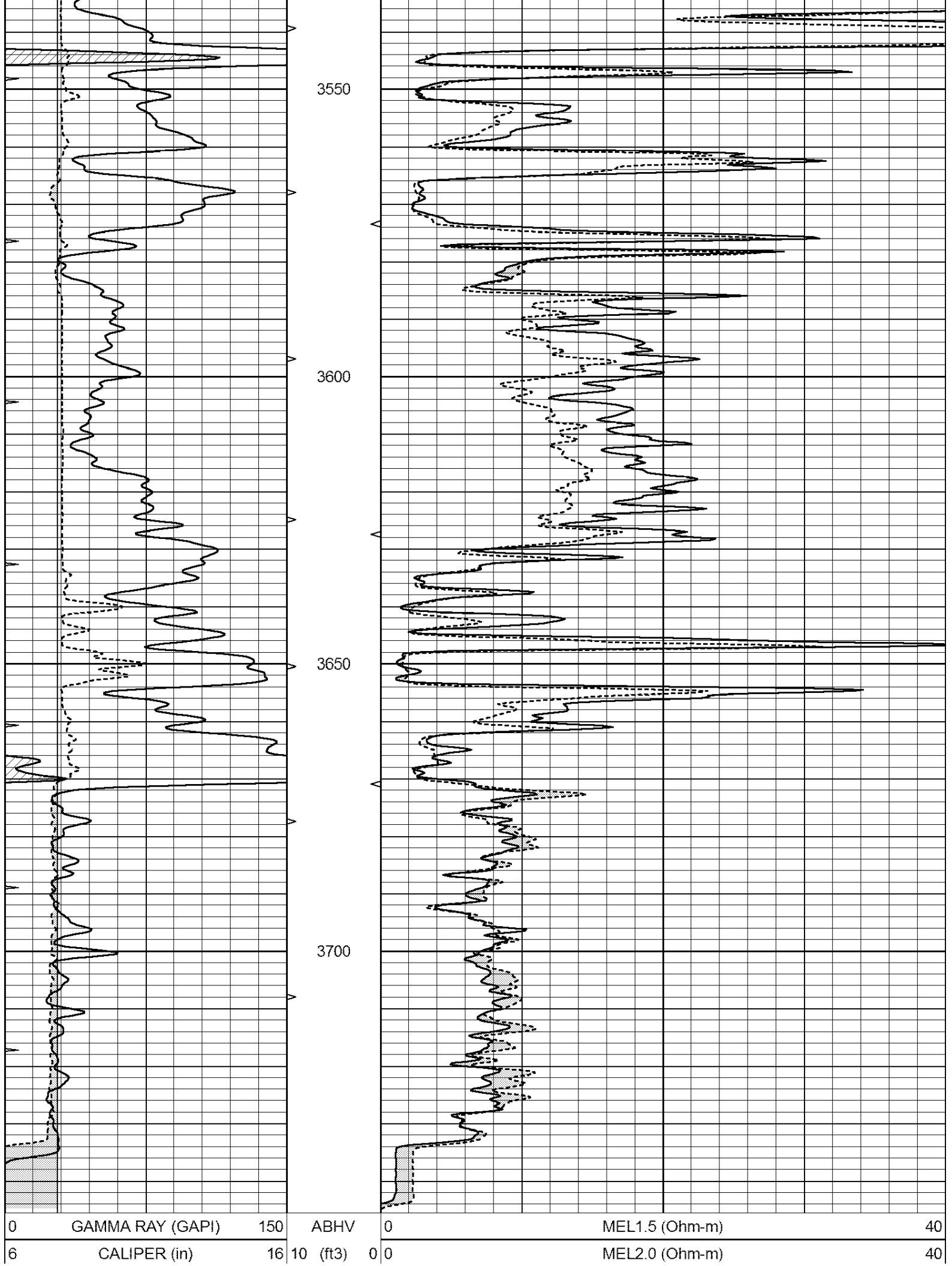


REPEAT SECTION

Database File: 010866ddn.db
 Dataset Pathname: pass6.1
 Presentation Format: _micro
 Dataset Creation: Sun Apr 07 04:32:54 2013 by Calc Open-Cased 090629
 Charted by: Depth in Feet scaled 1:240

0	GAMMA RAY (GAPI)	150	ABHV	0	MEL1.5 (Ohm-m)	40
6	CALIPER (in)	16	10 (ft3)	0	MEL2.0 (Ohm-m)	40
0	MINMK	20	TBHV			
			0 (ft3)	10		





0	MINMK	20	TBHV
			0 (ft3) 10

Calibration Report

Database File: 010866ddn.db
 Dataset Pathname: pass7.1
 Dataset Creation: Sun Apr 07 04:33:53 2013 by Calc Open-Cased 090629

MICRO Calibration Report

Serial Number: MICRO6
 Tool Model: PROBE
 Performed: Tue Jan 15 17:57:23 2013

Caliper Calibration: Gain=5.542 Offset=-1.220

	Low Cal	High Cal
References	8.000	14.000
Readings	1.431	2.513

1.5" Calibration: Gain=45.075 Offset=-0.700

	Low Cal	High Cal
References	0.000	20.000
Readings	0.004	1.196

2" Calibration: Gain=38.041 Offset=0.000

	Low Cal	High Cal
References	0.000	20.000
Readings	0.006	0.913

Gamma Ray Calibration Report

Serial Number: #8
 Tool Model: OPEN
 Performed: Mon Jun 13 16:56:43 2011

Calibrator Value: 150.0 GAPI

Background Reading:	0.0	cps
Calibrator Reading:	175.0	cps

Sensitivity: 0.8371 GAPI/cps