



**COMPLETION
& PRODUCTION
SERVICES CO.**

**DUAL
INDUCTION
LOG**

Company ANDERSON ENERGY, INC.
Well PELTON "A" #2
Field WILDCAT
County ROOKS
State KANSAS

Company ANDERSON ENERGY, INC.
Well PELTON "A" #2
Field WILDCAT
County ROOKS State KANSAS

Location: API # : 15-163-24112-0000
1250' FSL & 2000' FWL
SEC 23 TWP 10S RGE 19W
Permanent Datum GROUND LEVEL Elevation 2131
Log Measured From KELLY BUSHING 8' A.G.L.
Drilling Measured From KELLY BUSHING
Other Services
CDL/CNL
MEL
Elevation
K.B. 2139
D.F. 2137
G.L. 2131

Date	4/7/13		
Run Number	ONE		
Depth Driller	3738		
Depth Logger	3736		
Bottom Logged Interval	3734		
Top Log Interval	00		
Casing Driller	8 5/8" @ 306		
Casing Logger	305		
Bit Size	7 7/8"		
Type Fluid in Hole	CHEMICAL MUD	CHLORIDES 6000 PPM	
Density / Viscosity	9.3/45		
pH / Fluid Loss	8.5/9.2		
Source of Sample	FLOWLINE		
Rm @ Meas. Temp	.80 @ 79F		
Rmt @ Meas. Temp	.60 @ 79F		
Rmc @ Meas. Temp	.96 @ 79F		
Source of Rmf / Rmc	MEASUREMENT		
Rm @ BHT	.55 @ 114F		
Time Circulation Stopped	2 HOURS		
Time Logger on Bottom			
Maximum Recorded Temperature	114F		
Equipment Number	4010		
Location	HAYS, KANSAS		
Recorded By	JASON CAPPELLUCCI		
Witnessed By	ROGER MARTIN		

<<< Fold Here >>>

All interpretations are opinions based on inferences from electrical or other measurements and we cannot and do not guarantee the accuracy or correctness of any interpretation, and we shall not, except in the case of gross or willful negligence on our part, be liable or responsible for any loss, costs, damages, or expenses incurred or sustained by anyone resulting from any interpretation made by any of our officers, agents or employees. These interpretations are also subject to our general terms and conditions set out in our current Price Schedule.

Comments

THANK YOU FOR USING NABORS, HAYS, KS. (785) 628-6395
DIRECTIONS:
SALINE RIVER RD. & 183 HWY - 4 1/2 W. - N. TO CURVE WEST
STAY W. TO RD. 11 - N. TO RD. CC - 1/2 E. - N. INTO



MAIN SECTION

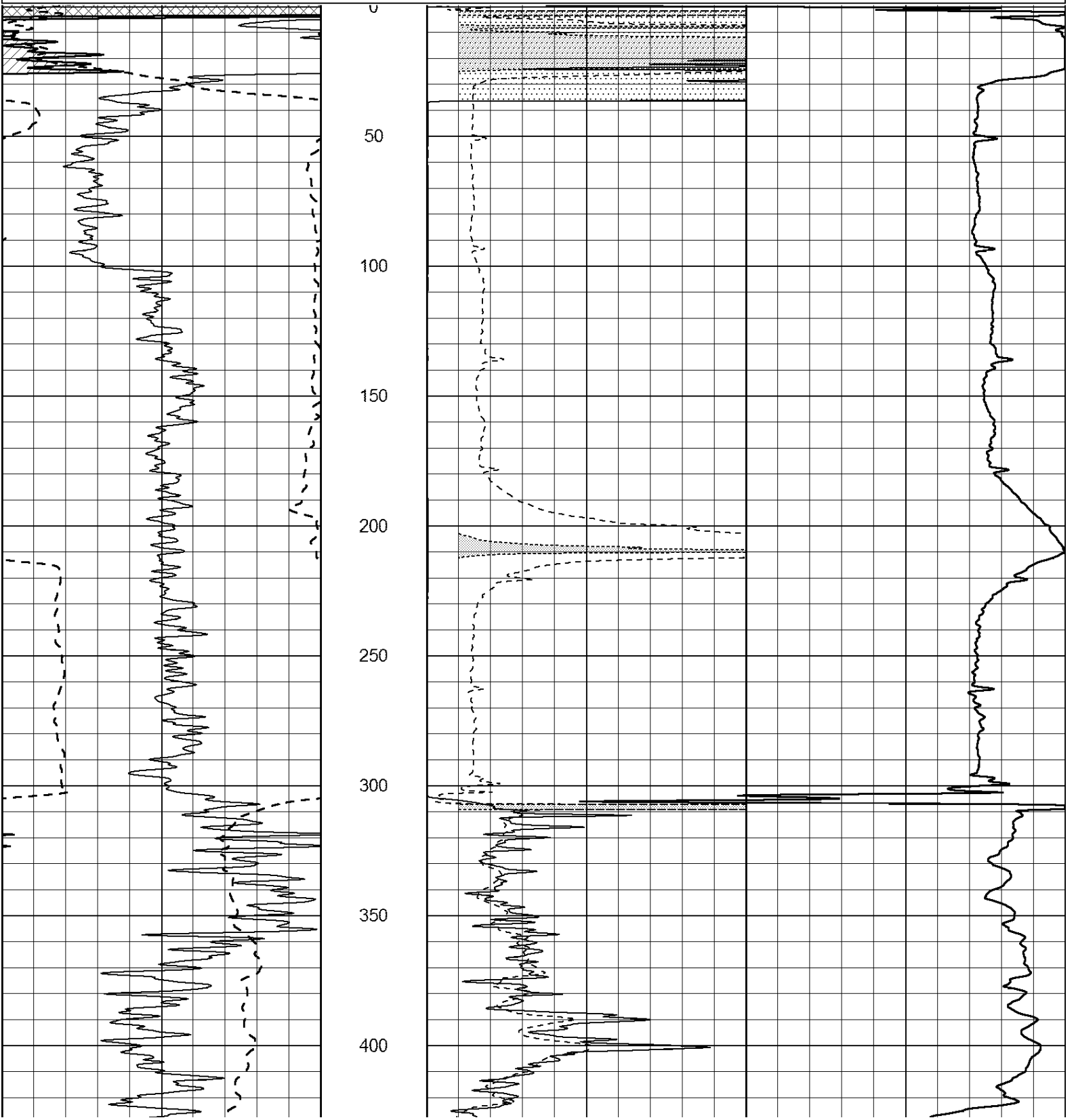
Database File: 010866ddn.db
 Dataset Pathname: pass3.3
 Presentation Format: _dil2
 Dataset Creation: Sun Apr 07 03:17:48 2013 by Calc Open-Cased 090629
 Charted by: Depth in Feet scaled 1:600

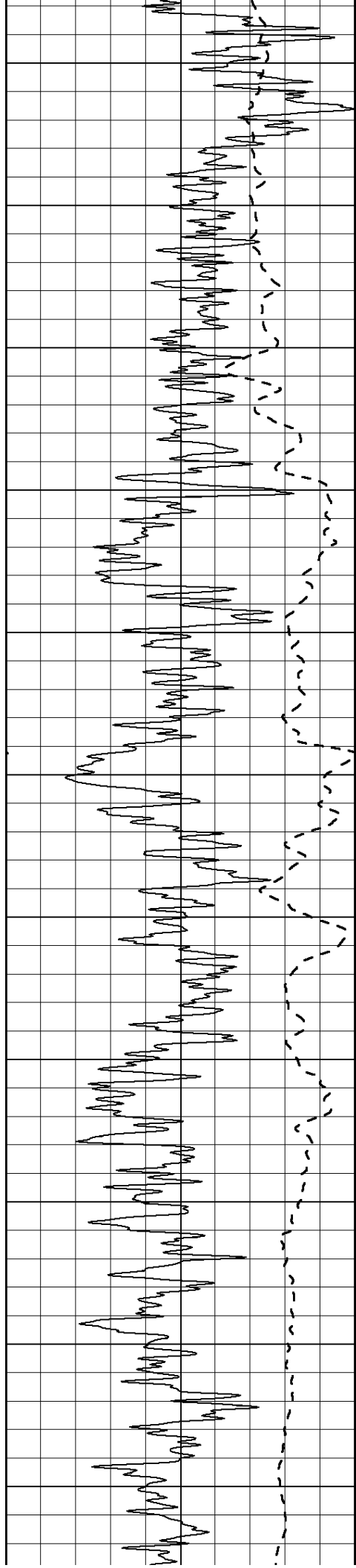
0 Gamma Ray (GAPI) 150
 -100 SP (mV) 100

0 RLL3 (Ohm-m) 50
 0 RILD (Ohm-m) 50

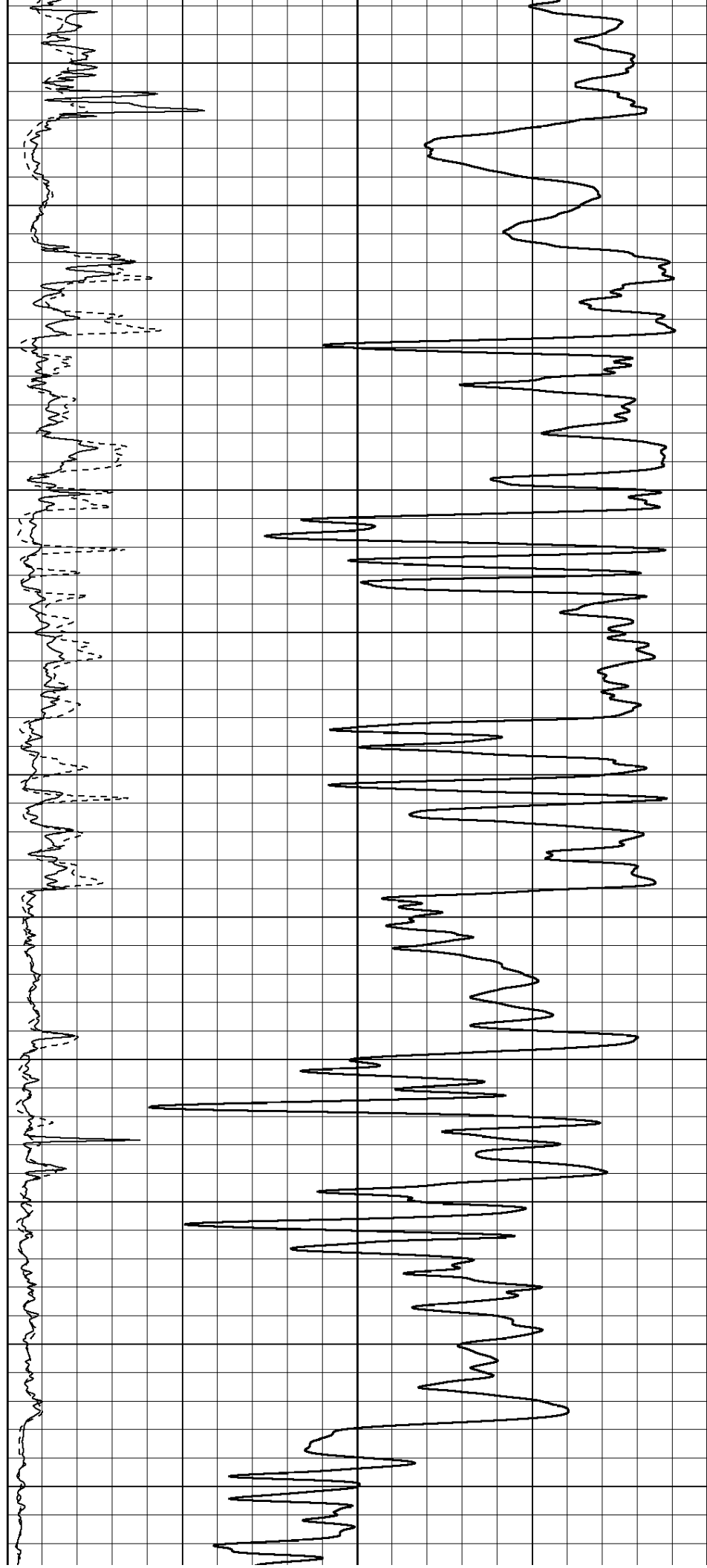
1000 CILD (mmho/m) 0

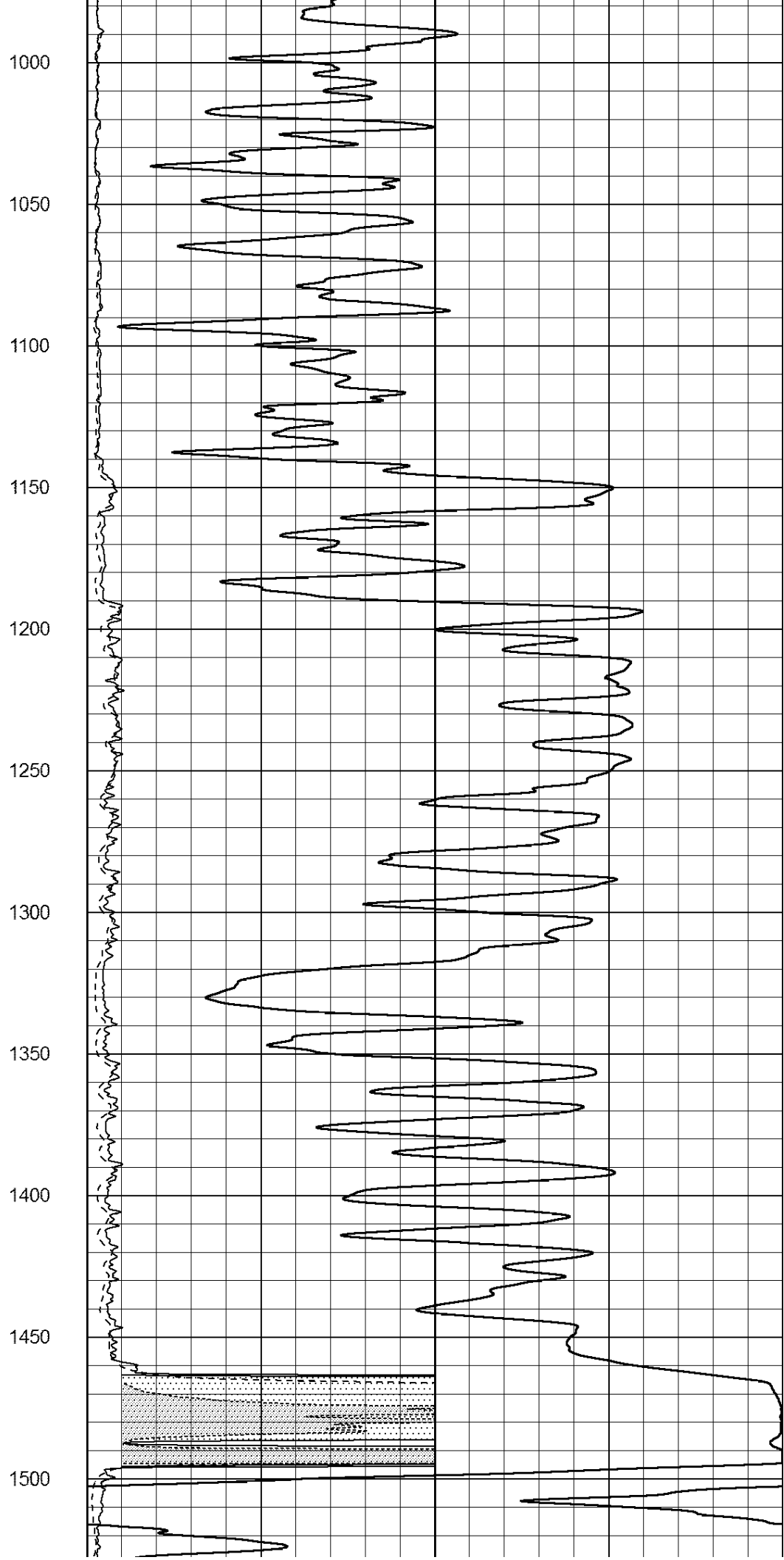
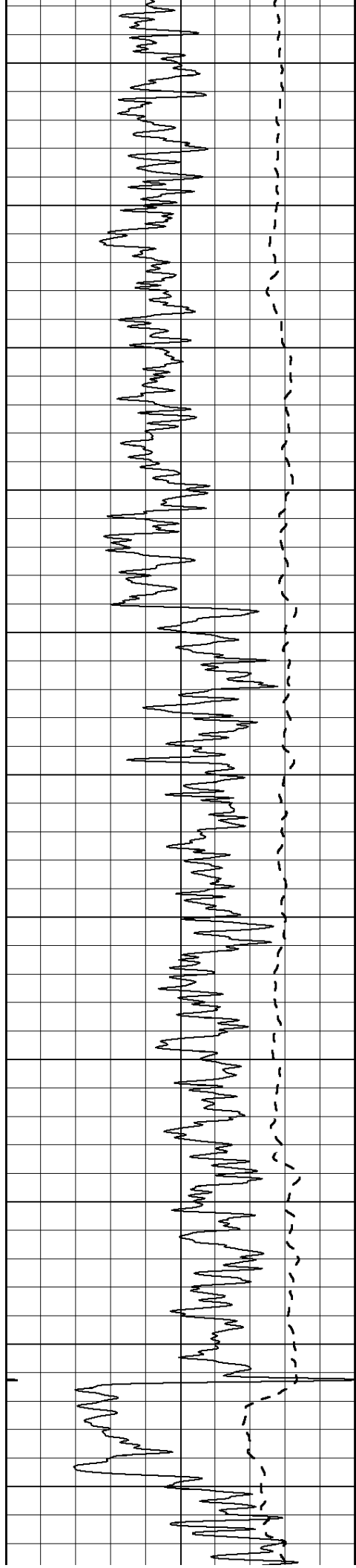
50 RILD X10 (Ohm-m) 500
 50 RLL3 X10 (Ohm-m) 500

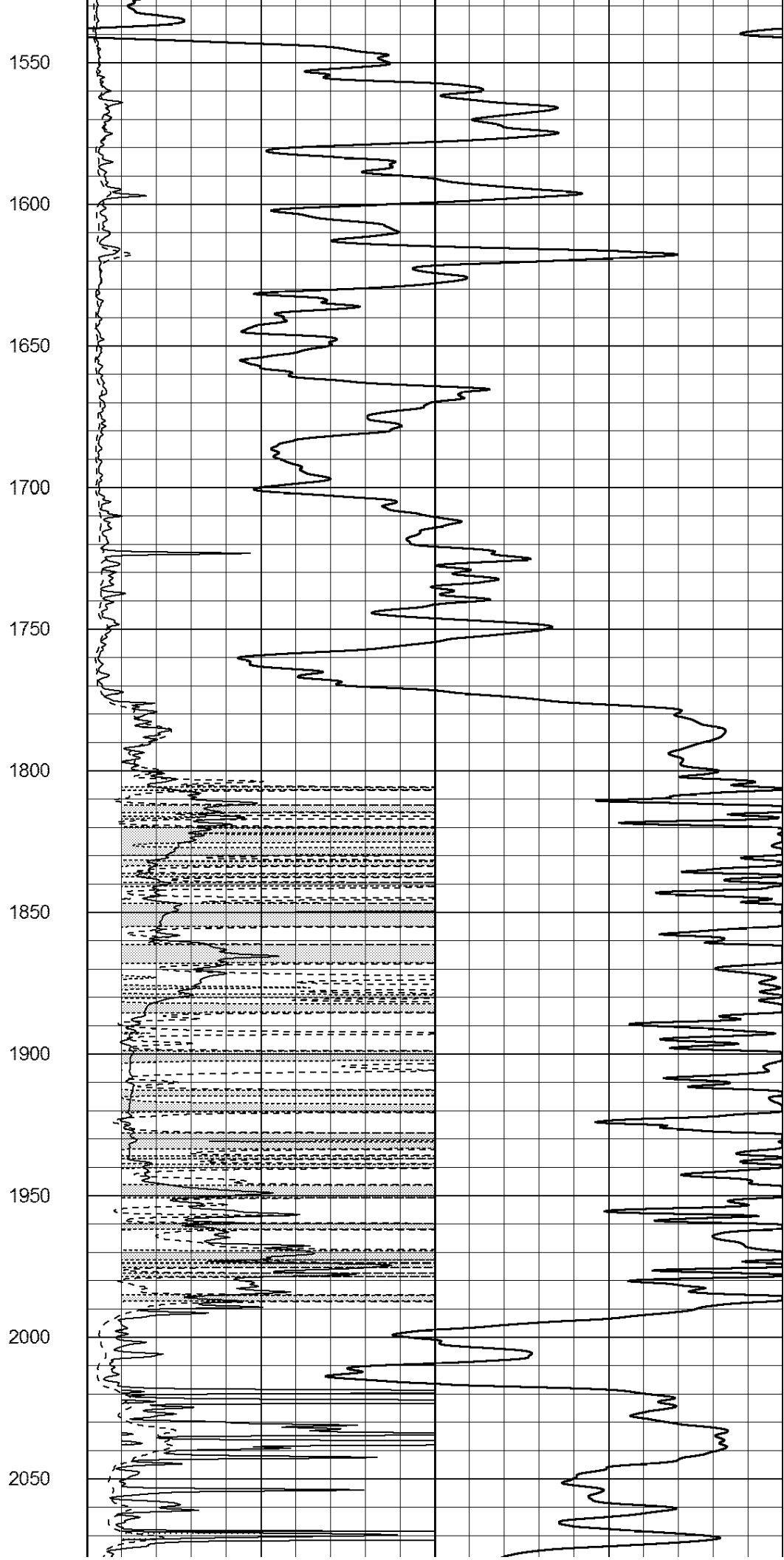
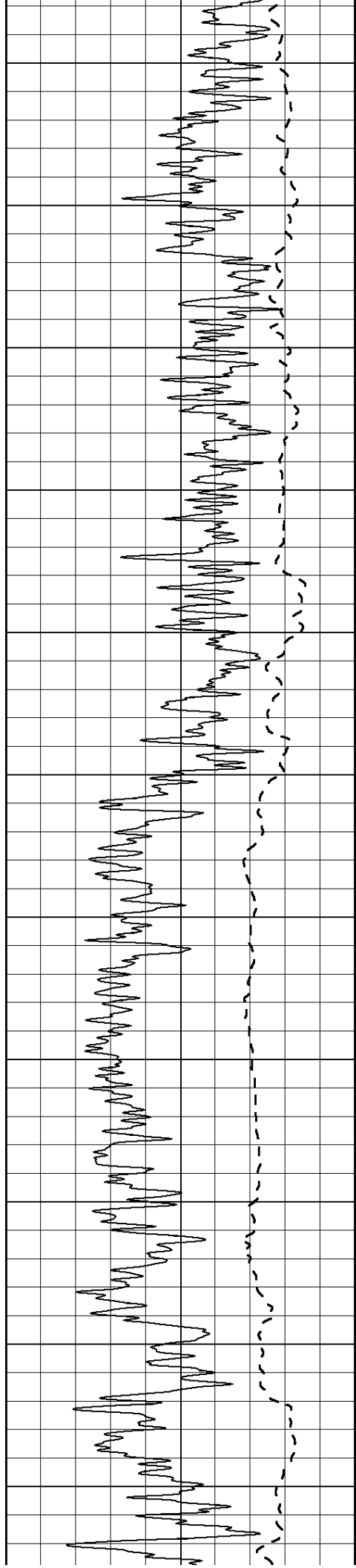


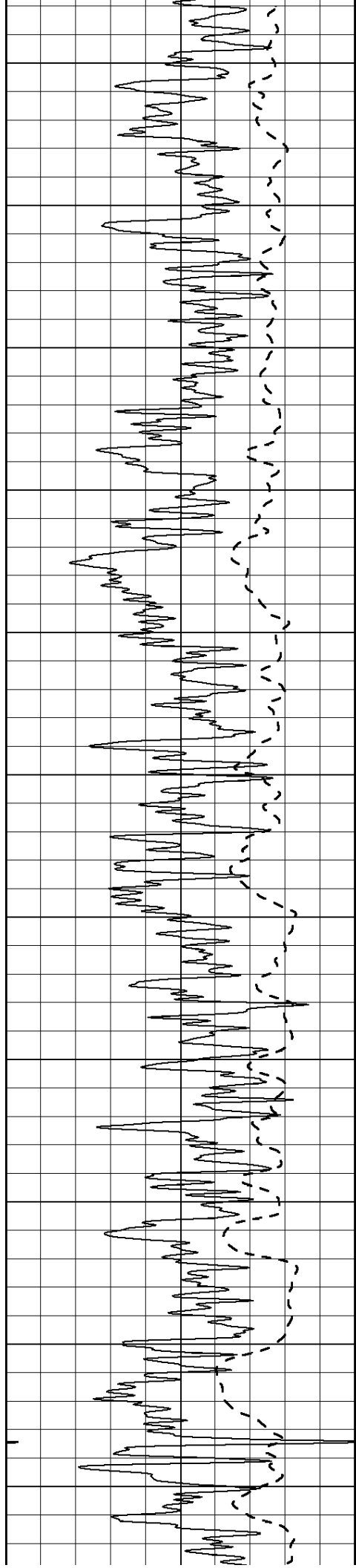


450
500
550
600
650
700
750
800
850
900
950









2100

2150

2200

2250

2300

2350

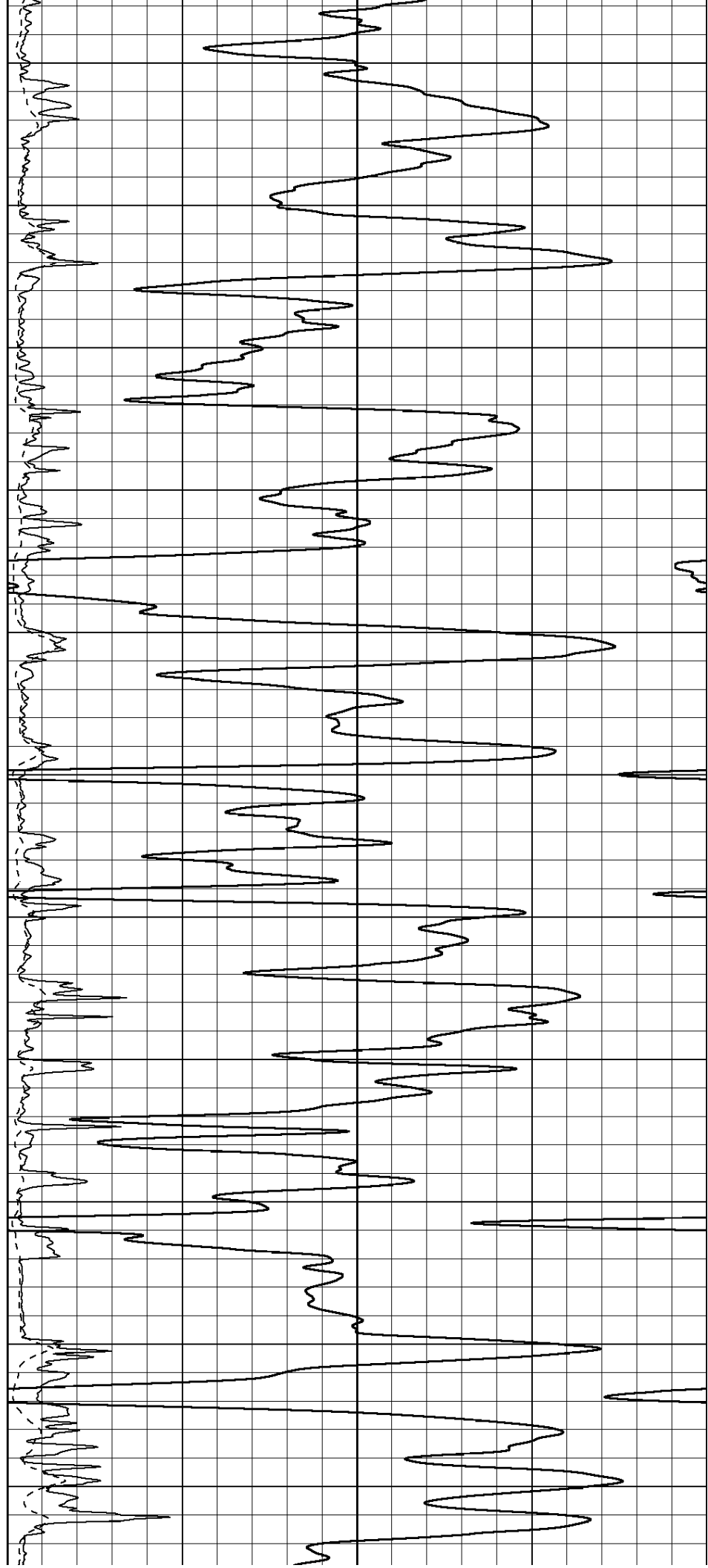
2400

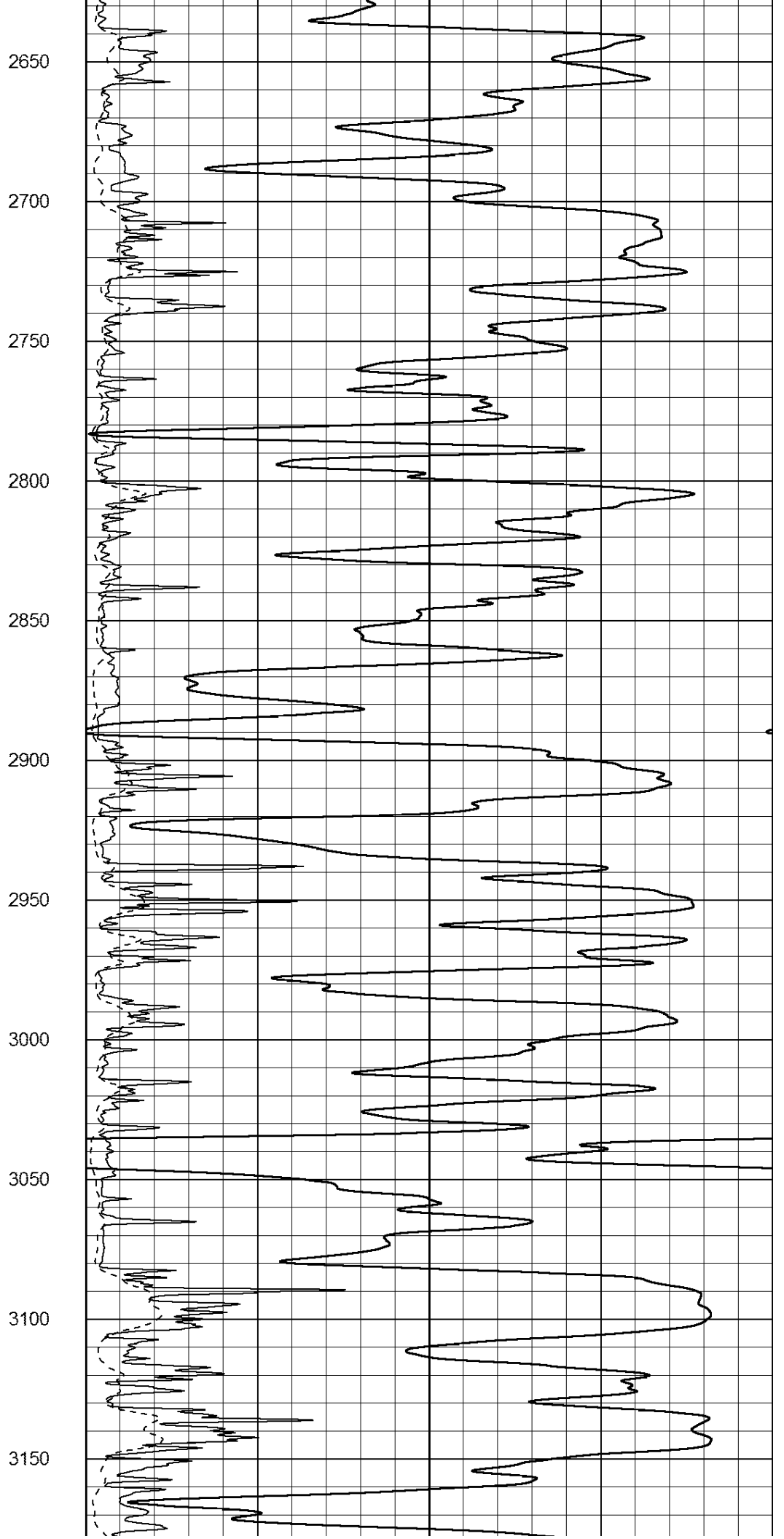
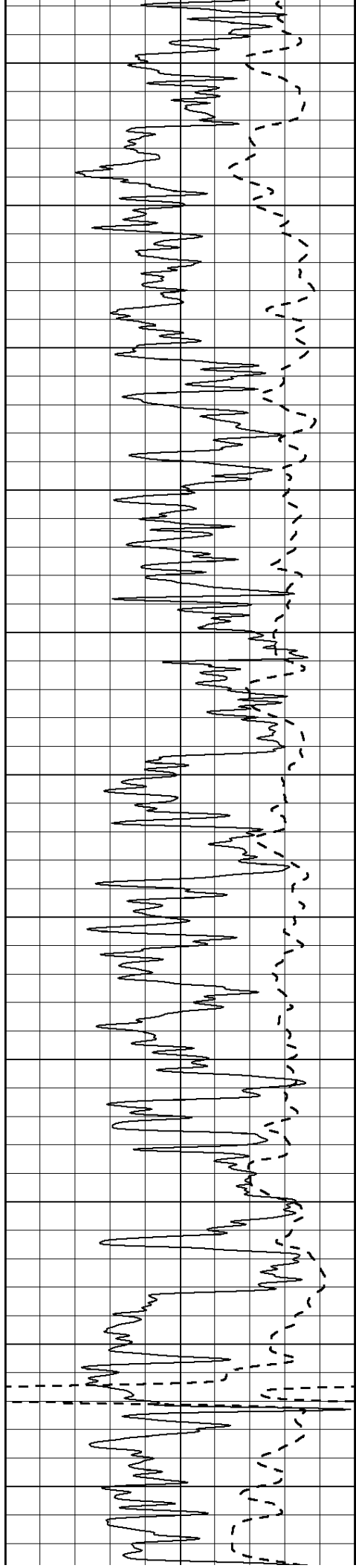
2450

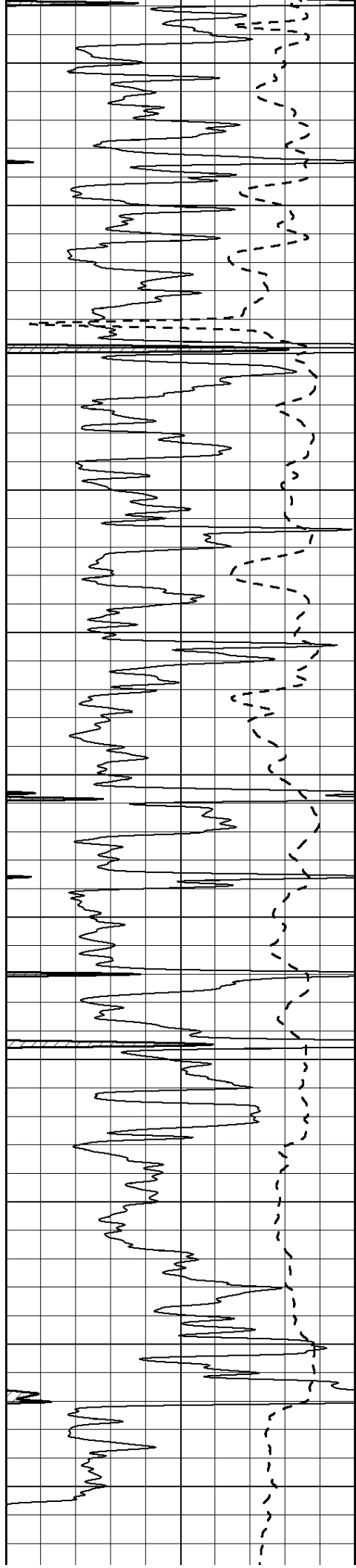
2500

2550

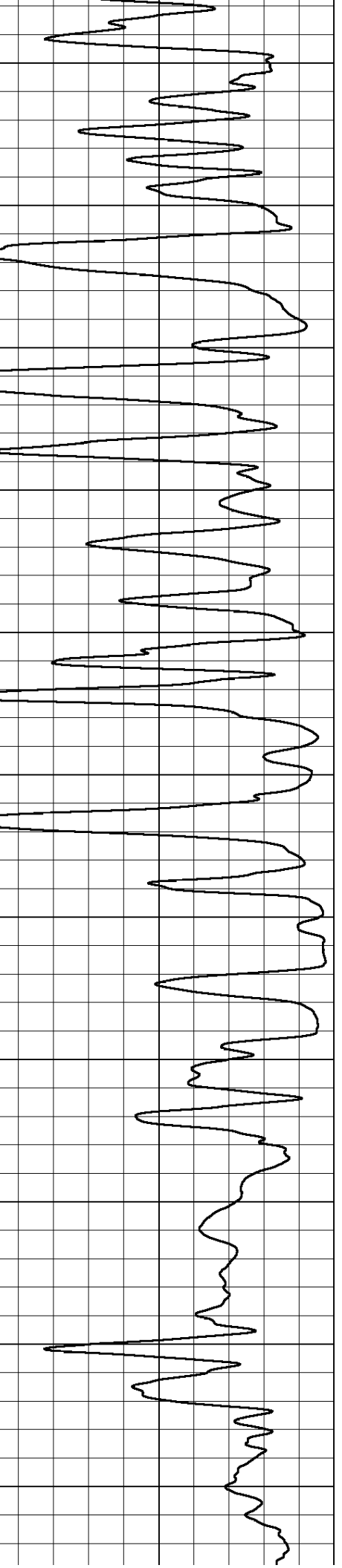
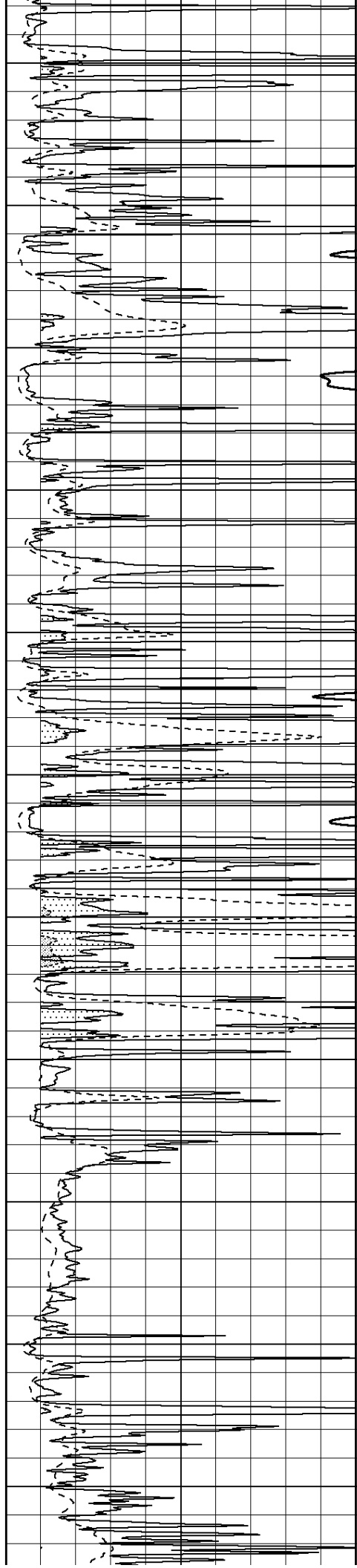
2600







3200
3250
3300
3350
3400
3450
3500
3550
3600
3650
3700



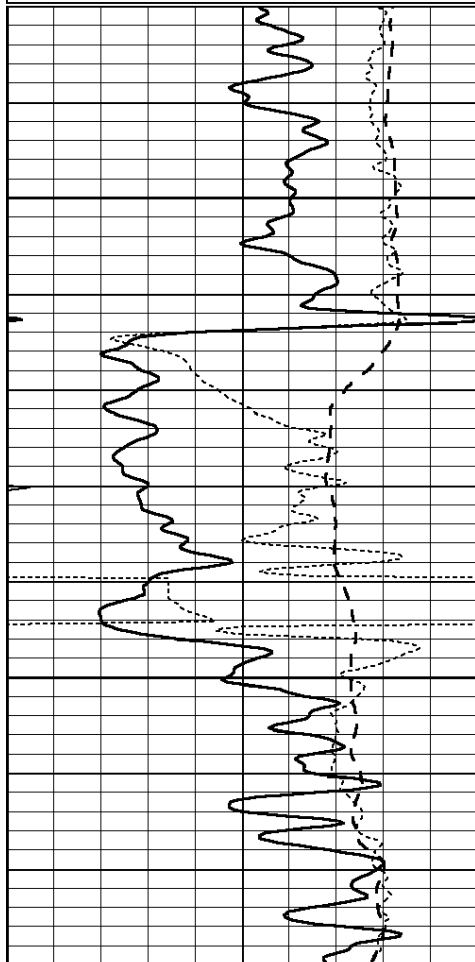
0	Gamma Ray (GAPI)	150	0	RLL3 (Ohm-m)	50
-100	SP (mV)	100	0	RILD (Ohm-m)	50
			1000	CILD (mmho/m)	0
			50	RILD X10 (Ohm-m)	500
			50	RLL3 X10 (Ohm-m)	500



ANHYDRITE

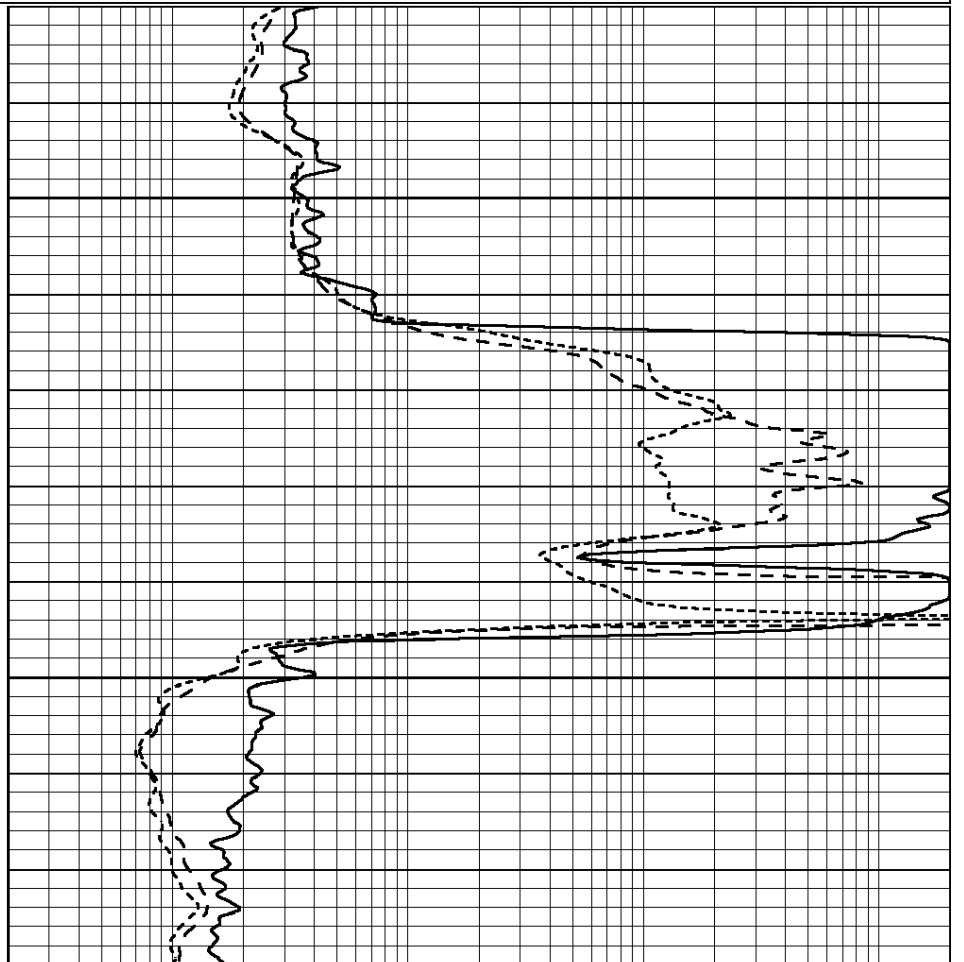
Database File: 010866ddn.db
 Dataset Pathname: pass3.2
 Presentation Format: _dil
 Dataset Creation: Sun Apr 07 02:45:27 2013 by Calc Open-Cased 090629
 Charted by: Depth in Feet scaled 1:240

0	GAMMA RAY (GAPI)	150	0.2	SHALLOW GUARD (Ohm-m)	2000
-100	SP (mV)	100	0.2	DEEP INDUCTION (Ohm-m)	2000
-250	Rxo/Rt	50	0.2	MEDIUM INDUCTION (Ohm-m)	2000
0	MINMK	20			



1450

1500



0	GAMMA RAY (GAPI)	150	0.2	SHALLOW GUARD (Ohm-m)	2000
-100	SP (mV)	100	0.2	DEEP INDUCTION (Ohm-m)	2000
-250	Rxo/Rt	50	0.2	MEDIUM INDUCTION (Ohm-m)	2000
0	MINMK	20			



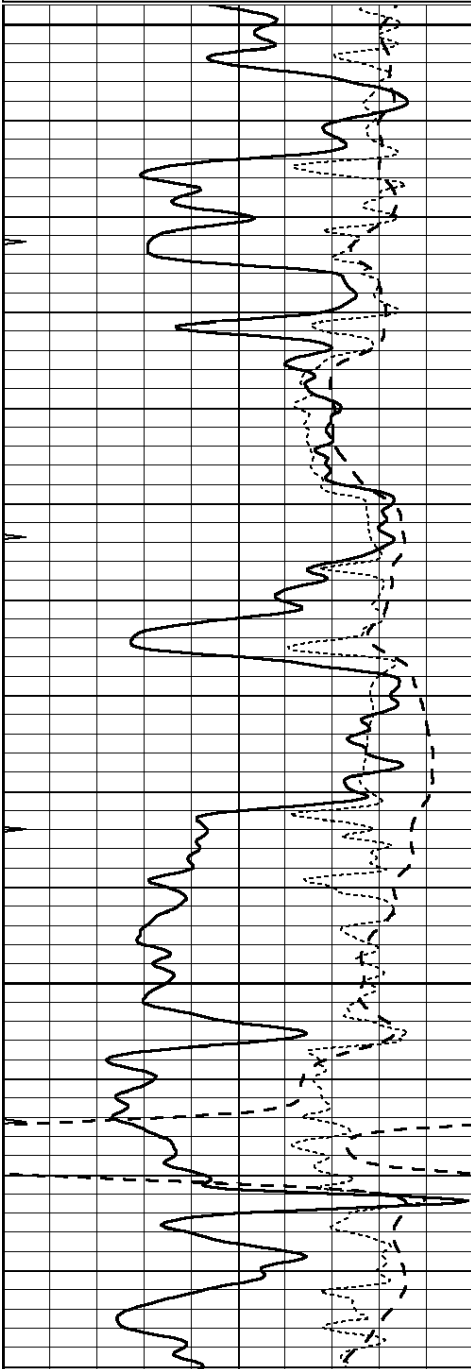
**COMPLETION
& PRODUCTION
SERVICES CO.**

MAIN SECTION

Database File: 010866ddn.db
 Dataset Pathname: pass3.1
 Presentation Format: _dil
 Dataset Creation: Sun Apr 07 02:31:49 2013 by Calc Open-Cased 090629
 Charted by: Depth in Feet scaled 1:240

0	GAMMA RAY (GAPI)	150
-100	SP (mV)	100
-250	Rxo/Rt	50
0	MINMK	20

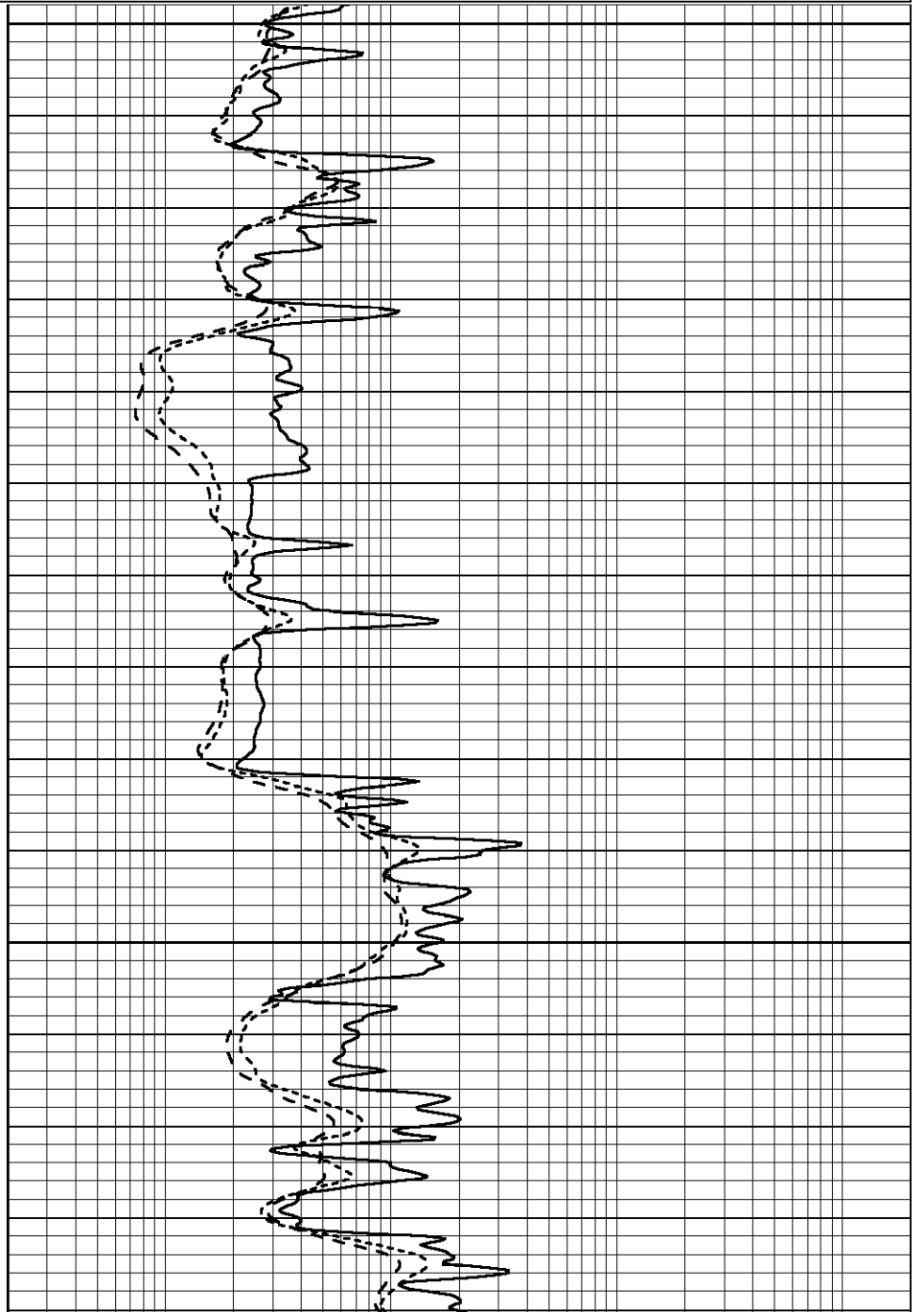
0.2	SHALLOW GUARD (Ohm-m)	2000
0.2	DEEP INDUCTION (Ohm-m)	2000
0.2	MEDIUM INDUCTION (Ohm-m)	2000

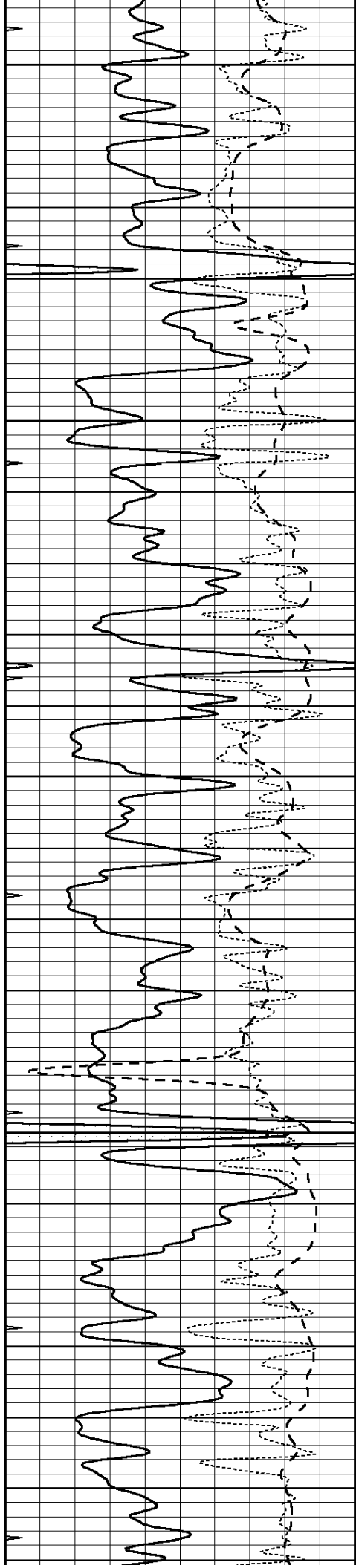


3000

3050

3100





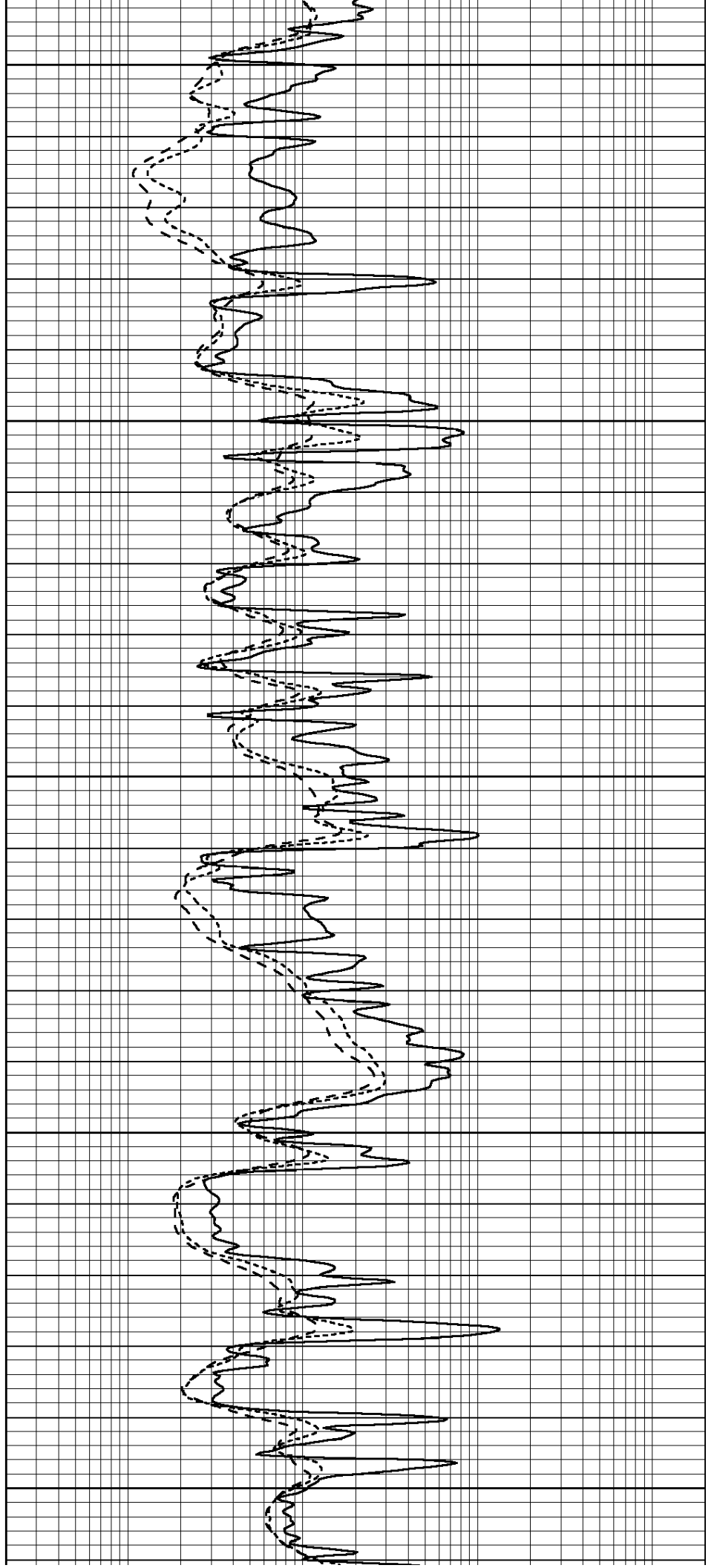
3150

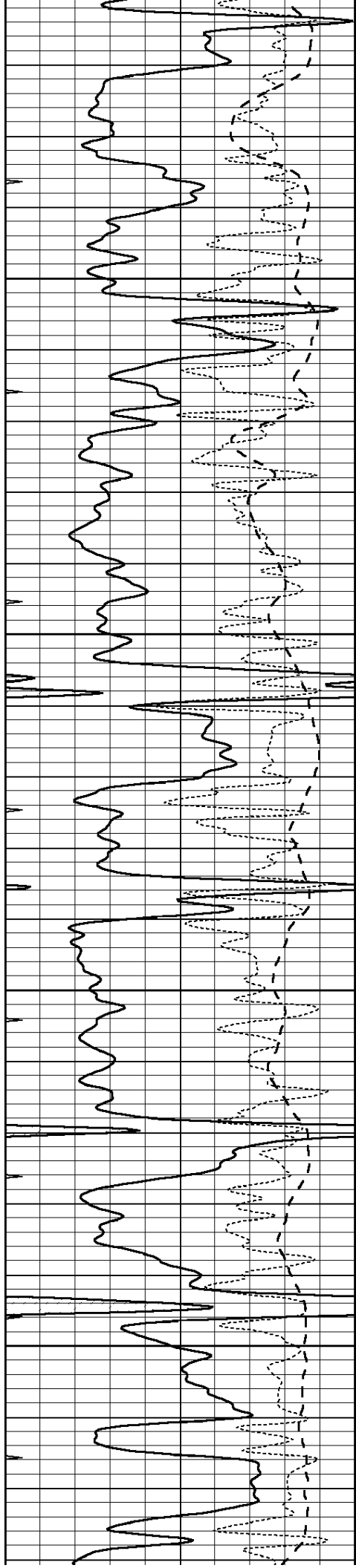
3200

3250

3300

3350



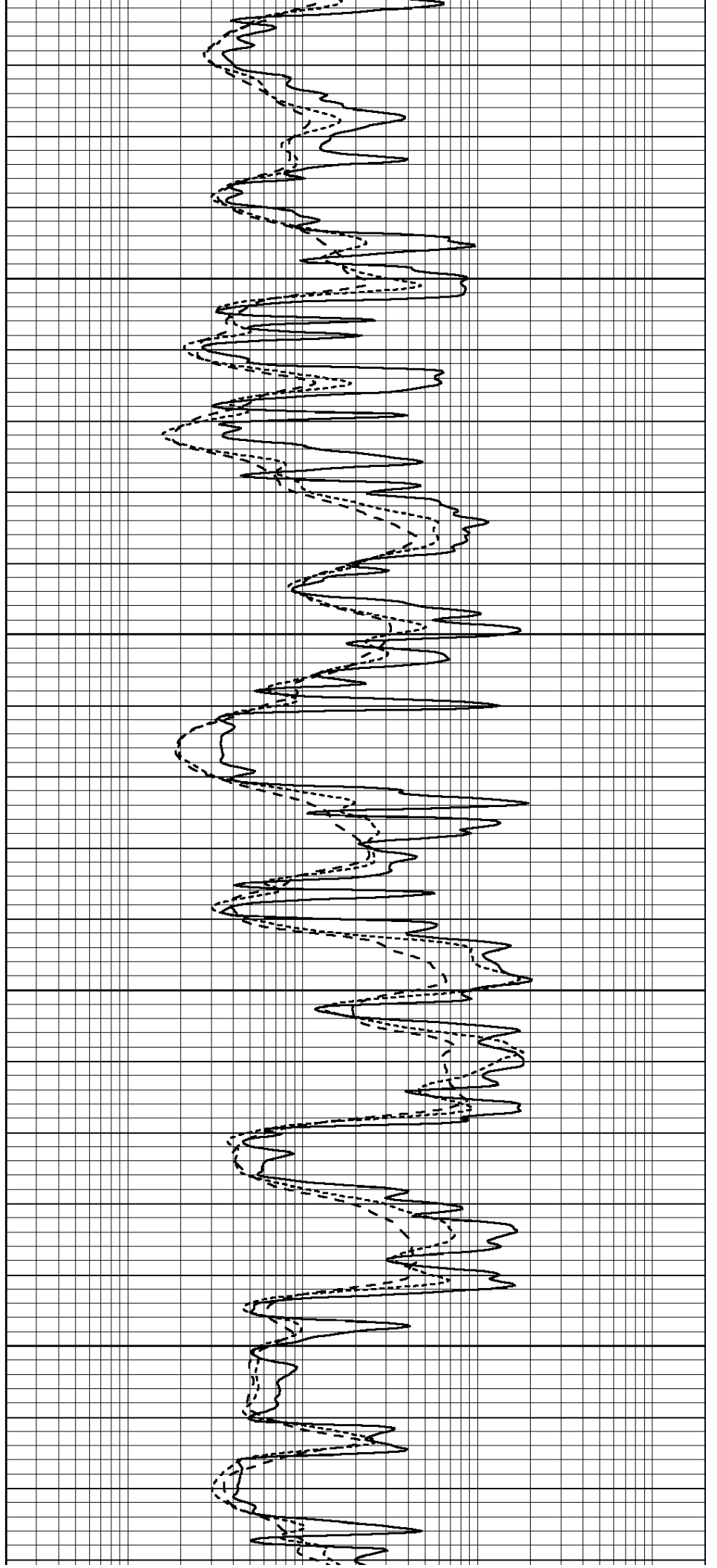


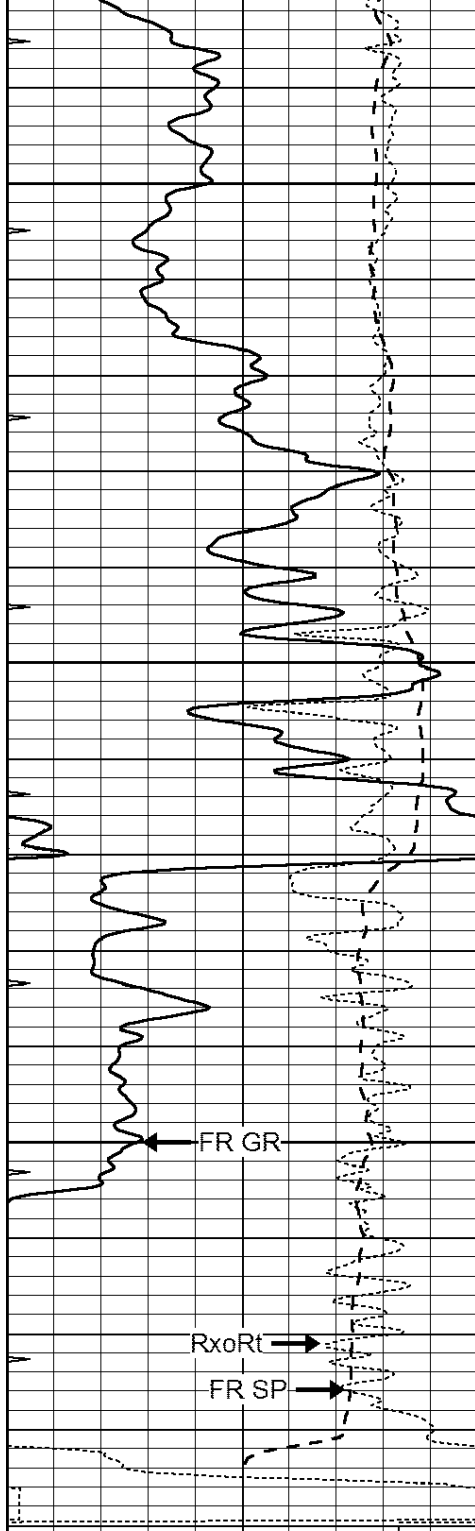
3400

3450

3500

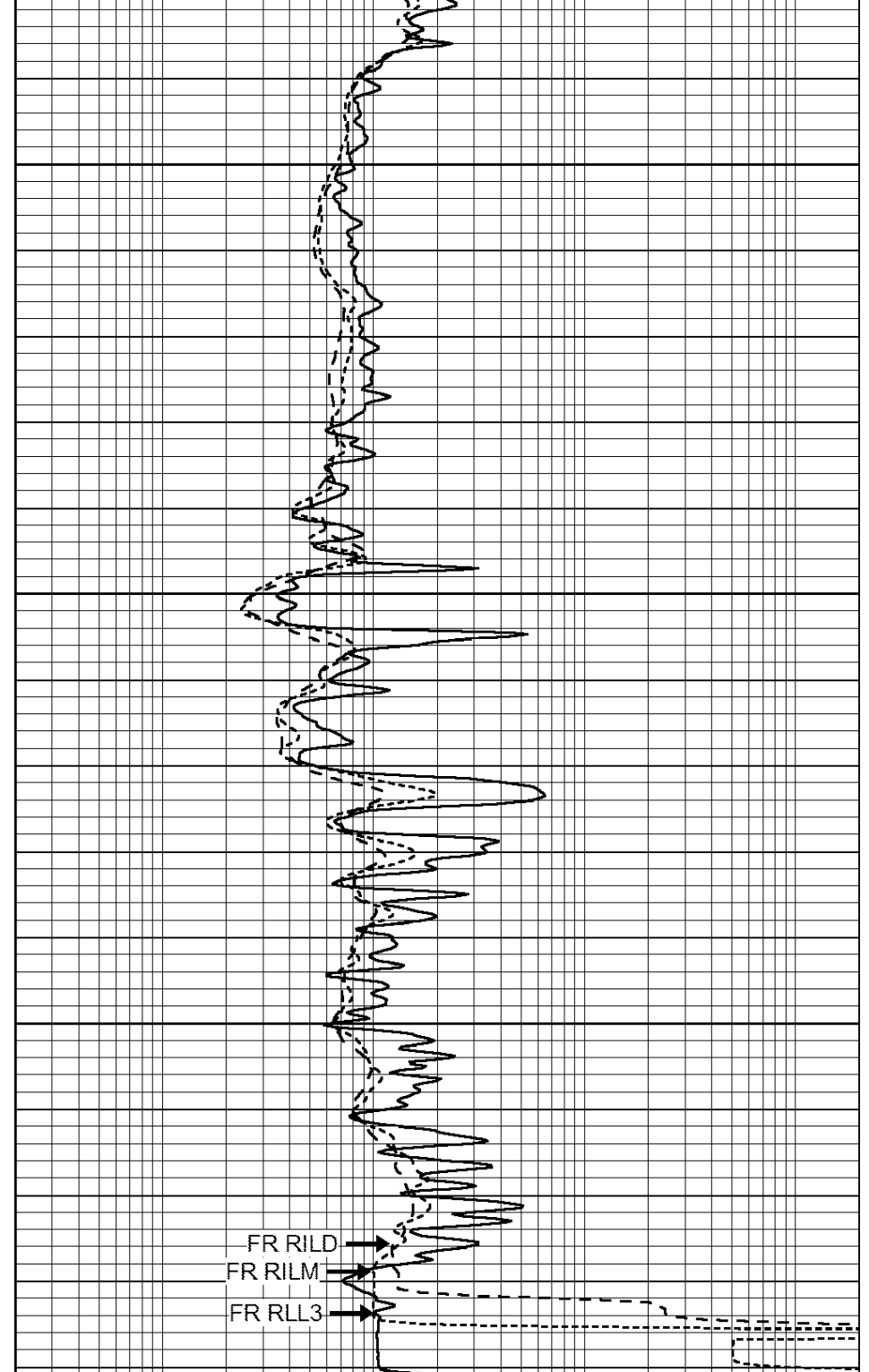
3550





3600
3650
3700
LTD 3736

0	GAMMA RAY (GAPI)	150
-100	SP (mV)	100
-250	Rxo/Rt	50
0	MINMK	20



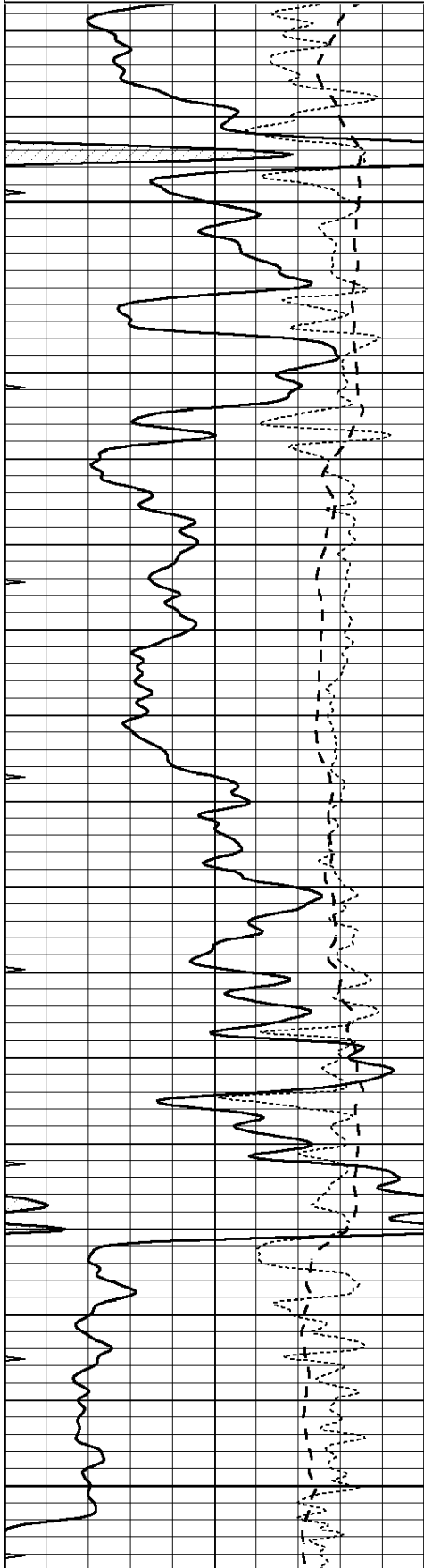
0.2	SHALLOW GUARD (Ohm-m)	2000
0.2	DEEP INDUCTION (Ohm-m)	2000
0.2	MEDIUM INDUCTION (Ohm-m)	2000



REPEAT SECTION

0	GAMMA RAY (GAPI)	150
-100	SP (mV)	100
-250	Rxo/Rt	50
0	MINMK	20

0.2	SHALLOW GUARD (Ohm-m)	2000
0.2	DEEP INDUCTION (Ohm-m)	2000
0.2	MEDIUM INDUCTION (Ohm-m)	2000

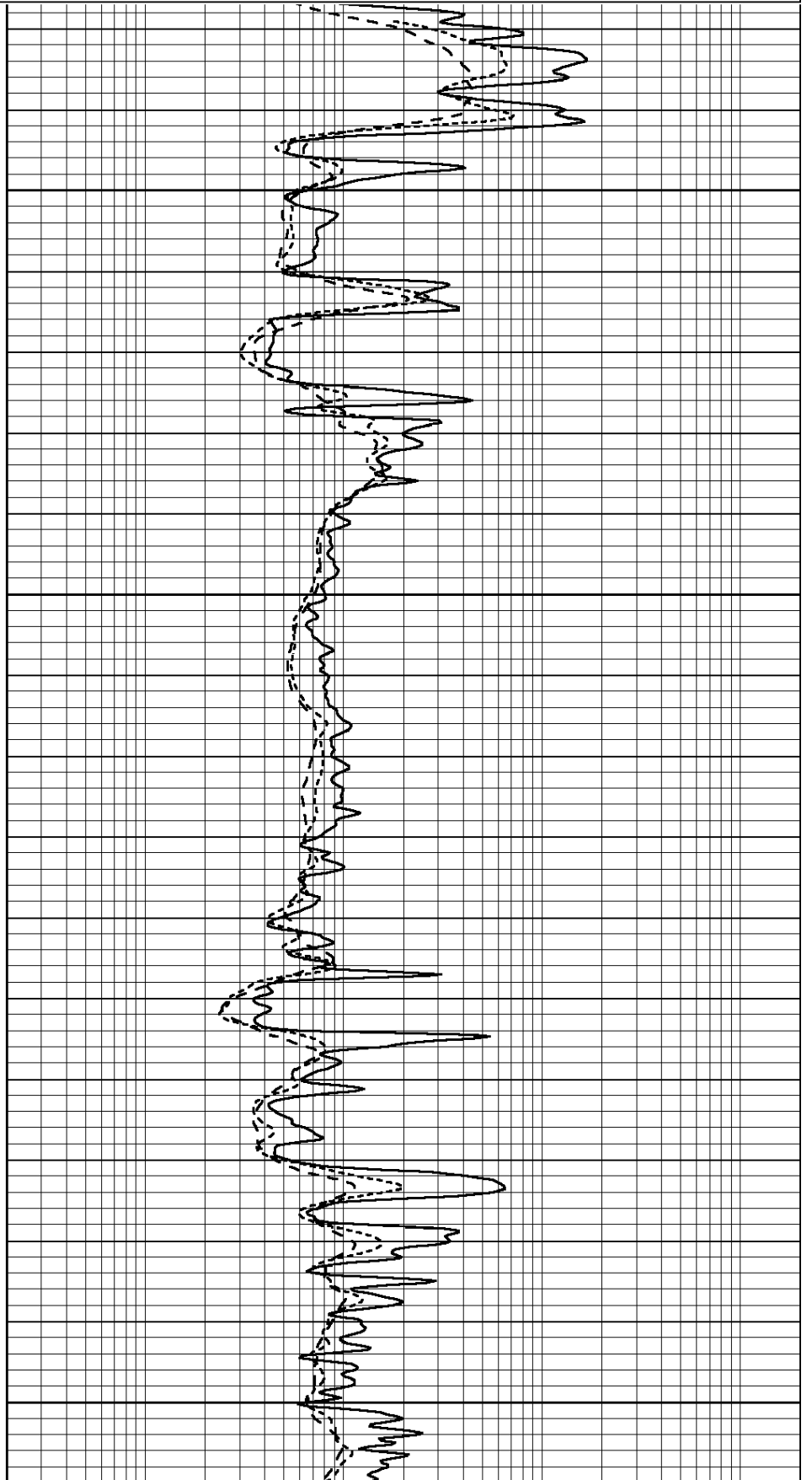


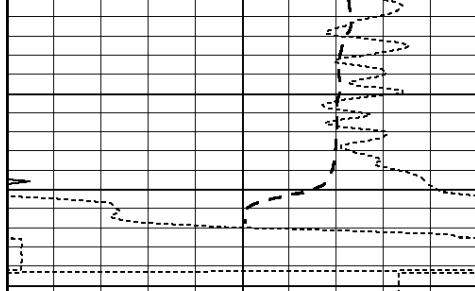
3550

3600

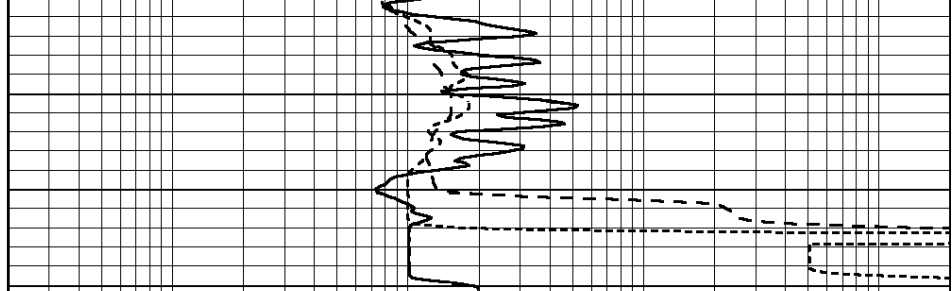
3650

3700





0	GAMMA RAY (GAPI)	150
-100	SP (mV)	100
-250	Rxo/Rt	50
0	MINMK	20



0.2	SHALLOW GUARD (Ohm-m)	2000
0.2	DEEP INDUCTION (Ohm-m)	2000
0.2	MEDIUM INDUCTION (Ohm-m)	2000

Calibration Report

Database File: 010866ddn.db
 Dataset Pathname: pass3.1
 Dataset Creation: Sun Apr 07 02:31:49 2013 by Calc Open-Cased 090629

Dual Induction Calibration Report

Serial-Model: PROBE8-DILG
 Surface Cal Performed: Fri Aug 01 06:33:19 2008
 Downhole Cal Performed: Mon Jul 28 11:08:27 2008
 After Survey Verification Performed: Mon Jul 28 11:08:27 2008

Surface Calibration

Loop:	Readings			References			Results	
	Air	Loop		Air	Loop		m	b
Deep	0.015	0.648	V	0.000	400.000	mmho/m	632.616	-9.730
Medium	0.029	0.796	V	0.000	464.000	mmho/m	605.049	-17.680
Internal:	Zero	Cal		Zero	Cal		m	b
Deep	0.017	0.657	V	0.000	400.000	mmho/m	625.153	-10.619
Medium	0.016	0.757	V	0.000	464.000	mmho/m	625.992	-9.739

Downhole Calibration

	Readings			References			Results	
	Zero	Cal		Zero	Cal		m'	b'
Deep	0.000	0.000	mmho/m	2.011	405.777	mmho/m	1.000	0.000
Medium	0.000	0.000	mmho/m	7.590	503.393	mmho/m	1.000	0.000
LL3		7.500	V		1500.000	Ohm-m		
		0.000	V		20.000	Ohm-m		
		-7.200	V		3800.000	mmho-m		

After Survey Verification

	Readings			Targets			Results	
	Zero	Cal		Zero	Cal		m'	b'
Deep	0.000	0.000	mmho/m	0.000	0.000	mmho/m	0.000	0.000
Medium	0.000	0.000	mmho/m	0.000	0.000	mmho/m	0.000	0.000
LL3		1.000	Ohm-m		1.000	Ohm-m		
		0.000	Ohm-m		0.000	Ohm-m		
		1.000	mmho-m		1.000	mmho-m		

Compensated Density Calibration Report

Serial-Model: GEAR3-GEARHART

Serial Model:
 Source / Verifier:
 Master Calibration Performed:
 Before Survey Verification Performed:
 After Survey Verification Performed:

143 / 143
 Fri Jan 04 15:48:16 2013

Master Calibration

	<u>Density</u>			<u>Far Detector</u>		<u>Near Detector</u>	
Magnesium	1.710	g/cc		935.36		501.55	cps
Aluminum	2.580	g/cc		209.32		357.01	cps
	Spine Angle = 77.21			Density/Spine Ratio = 0.567			
	<u>Size</u>			<u>Reading</u>			
Small Ring	8.00	in		4.29	V		
Large Ring	14.00	in		6.24	V		

Before Survey Verification

	<u>Target</u>			<u>Measured</u>	
		g/cc			g/cc
		g/cc			g/cc
		g/cc			g/cc

After Survey Verification

	<u>Target</u>			<u>Measured</u>	
		g/cc			g/cc
		g/cc			g/cc
		g/cc			g/cc

Compensated Neutron Calibration Report

Serial Number: 6I
 Tool Model: G

CALIBRATION

Detector	Readings	Target	Normalization
Short Space	1.00 cps	1.00 cps	1.0000
Long Space	1.00 cps	1.00 cps	1.0000

PRE-SURVEY VERIFICATION

	Detector	Readings	Measured	Target
1)	Short Space	cps		
	Long Space	cps	pu	pu
2)	Short Space	cps		
	Long Space	cps	pu	
3)	Short Space	cps		
	Long Space	cps	pu	

POST-SURVEY VERIFICATION

	Detector	Readings	Measured	Target
1)	Short Space	cps		
	Long Space	cps	pu	pu
2)	Short Space	cps		
	Long Space	cps	pu	pu

3) Short Space
Long Space

cps
cps

pu

pu

Gamma Ray Calibration Report

Serial Number:	#8	
Tool Model:	OPEN	
Performed:	Mon Jun 13 16:56:43 2011	
Calibrator Value:	150.0	GAPI
Background Reading:	0.0	cps
Calibrator Reading:	175.0	cps
Sensitivity:	0.8371	GAPI/cps