



MIDWEST SURVEYS
 LOGGING - PERFORATING - CONSULTING SERVICES
 P.O. Box 88, Osawatomie, KS 66064
 913 / 755 - 2128

GAMMA RAY / NEUTRON / CCL

File No. _____

Company **D.E. Exploration, Inc.**

Well **Flake No. R1-12**

Field **Neosho Falls - Leroy**

County **Coffey** State **Kansas**

Location **4290' FSL & 1380' FEL**

Other Services **Perforate**

Sec. 28 Typ. 22s Ege. 16e 1020'

Perforation Datum GL Elevation K.B. NA

Log Measured From GL D.F. NA

Drilling Measured From GL G.L. 1020'

Date 12-16-2013

Run Number One

Depth Driller 1113.0

Depth Logger 1070.8

Bottom Logged Interval 1089.8

Top Log Interval 20.0

Fluid Level Full

Type Fluid Water

Density / Viscosity NA

Salinity - PPM Cl NA

Max Recorded Temp NA

Estimated Cement Top 0.0

Equipment No. Location 107 Osawatomie

Recorded by Steve Vandenich

Witnessed by Dixie Evans

BOREHOLE RECORD

RUN NO. BIT FROM TO SIZE WGT. FROM TO

One 12.25" 0.0 40.0 7.00" 19.0# 0.0 40.0

Two 5.875" 40.0 1112.0 2.875" 6.5# 0.0 1105.81

Bottom 1073.81

CASINGS RECORD

TO 1073.81

Bottom 1073.81

Bottom 1073.81

Bottom 1073.81

Bottom 1073.81

Bottom 1073.81

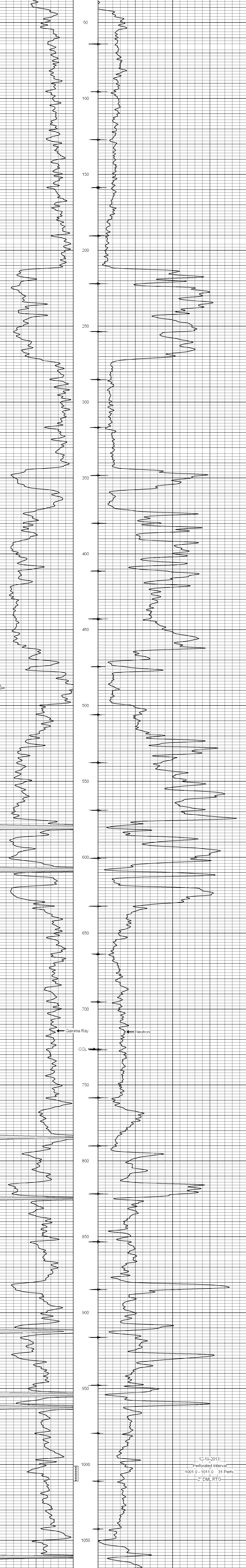
<<< Fold Here >>>

All interpretations are opinions based on inferences from electrical or other measurements and we cannot and do not guarantee the accuracy or correctness of any interpretation, and we shall not, except in the case of gross or willful negligence on our part, be liable or responsible for any loss, costs, damages, or expenses incurred or sustained by anyone resulting from any interpretation made by any of our officers, agents or employees. These interpretations are also subject to our general terms and conditions set out in our current Price Schedule.

Comments

Drilling Contractor :
Finney Drilling Company

Database File: flake12ri.db
 Dataset Pathname: pass1
 Presentation Format: gr-n-ccl
 Dataset Creation: Mon Dec 16 13:12:24 2013 by Log SCH 111116
 Charted by: Depth in Feet scaled 1.240



0 Gamma Ray (cps) 150
 150 Gamma Ray (cps) 300
 -1 CCL 1
 10 Neutron (cps) 2100