



MIDWEST SURVEYS
 LOGGING - PERFORATING - CONSULTING SERVICES
 P.O. Box 66, Oskawatomie, KS 66064
 913.755.2128

GAMMA RAY / NEUTRON / CCL

File No.

Company **RJ Enterprises**
 Well **Ware No. 41-A**
 Field **Bush City Shoestring**
 County **Anderson** State **Kansas**

Location **3005' FSL & 3313' FEL**
NE-SW-SE-NW

Sec. 15 Twp. 21s Rge. 20e
 Permanent Datum **GL** Elevation **NA**
 Log Measured From **GL**
 Drilling Measured From **GL**

Elevation
 KB NA
 D.F. NA
 G.L. NA

Date	10-07-2013
Run Number	One
Depth Driller	859.0
Depth Logger	853.4
Bottom Logged Interval	852.4
Top Log Interval	20.0
Fluid Level	Full
Type Fluid	Water
Density / Viscosity	NA
Salinity - PPM Cl	NA
Max Recorded Temp	NA
Estimated Cement Top	0.0
Equipment No.	102 Oskawatomie
Recorded By	Gary Winkisch
Witnessed By	Jason Kent

BORE-HOLE RECORD		CASINGS RECORD	
RUN No.	BIT FROM	TO	SIZE
One	9.875"	20.0	7.00"
Two	5.825"	20.0	6.5 #
			WT. FROM TO
			17.0 # 0.0 0.0
			6.5 # 0.0 653.4

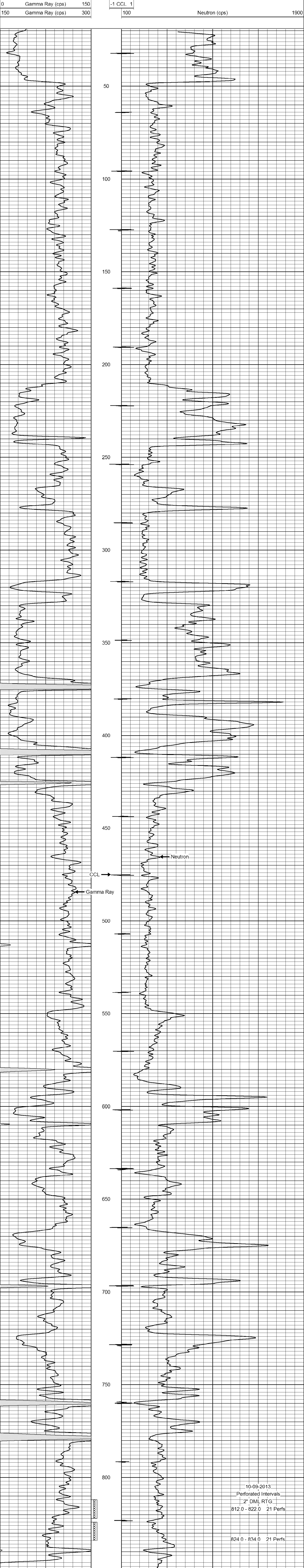
<<< Fold Here >>>

All interpretations are opinions based on inferences from electrical or other measurements and we cannot and do not guarantee the accuracy or correctness of any interpretation, and we shall not, except in the case of gross or willful negligence on our part, be liable or responsible for any loss, costs, damages, or expenses incurred or sustained by anyone resulting from any interpretation made by any of our officers, agents or employees. These interpretations are also subject to our general terms and conditions set out in our current Price Schedule.

Comments

Drilling Contractor :
RJ Enterprises

Database File: ware41a.db
 Dataset Pathname: pass1
 Presentation Format: gr-n-ccl
 Dataset Creation: Mon Oct 07 08:31:32 2013 by Log SCH 111116
 Charted by: Depth in Feet scaled 1:240



10-09-2013
 Perforated Intervals
 2" DML RTG
 812.0 - 822.0 21 Perfs
 824.0 - 834.0 21 Perfs

