



**COMPLETION  
& PRODUCTION  
SERVICES CO.**

**MICRO  
LOG**

Company RITCHIE EXPLORATION, INC.  
Well BEOUGHER NO. 8 B  
Field WILDCAT  
County GOVE State KANSAS

Company RITCHIE EXPLORATION, INC.  
Well BEOUGHER NO. 8 B  
Field WILDCAT  
County GOVE  
State KANSAS

Location: API #: 15-063-22084-0000  
80' N & 60' W OF E/2 - W/2  
1400' FNL & 939' FWL  
SEC 8 TWP 12 S RGE 29 W  
Permanent Datum GROUND LEVEL Elevation 2821  
Log Measured From KELLY BUSHING 5' A.G.L.  
Drilling Measured From KELLY BUSHING  
Other Services  
CNL/CDL  
DIL  
Elevation  
K.B. 2826  
D.F. 2824  
G.L. 2821

Date	02/19/2013
Run Number	TW0
Depth Driller	4620
Depth Logger	4623
Bottom Logged Interval	4621
Top Log Interval	3450
Casing Driller	256
Casing Logger	254
Bit Size	7.875
Type Fluid in Hole	CHEMICAL MUD
Density / Viscosity	9.2 / 52
pH / Fluid Loss	10.5 / 6.4
Source of Sample	FLOWLINE
Rim @ Meas. Temp	1.2 @ 72 F
Rmf @ Meas. Temp	.96 @ 72 F
Rmc @ Meas. Temp	1.44 @ 72 F
Source of Rmf / Rmc	MEASURED
Rim @ BHT	.70 @ 122 F
Time Circulation Stopped	2 HOURS
Time Logger on Bottom	8:30 A.M.
Maximum Recorded Temperature	122 F
Equipment Number	860
Location	HAYS, KS.
Recorded By	MIKE GARRISON
Witnessed By	ROGER FISHER

<<< Fold Here >>>

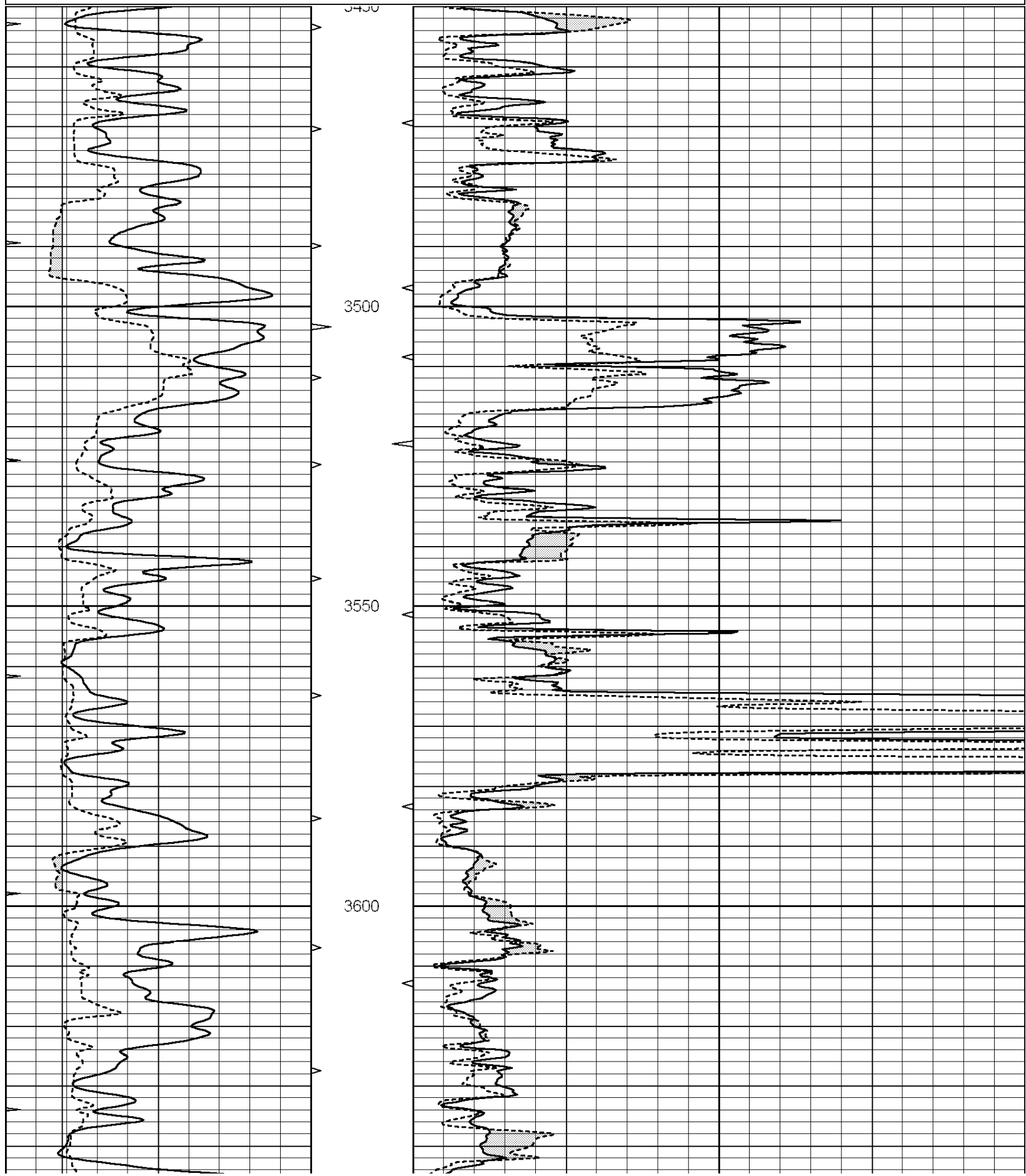
All interpretations are opinions based on inferences from electrical or other measurements and we cannot and do not guarantee the accuracy or correctness of any interpretation, and we shall not, except in the case of gross or willful negligence on our part, be liable or responsible for any loss, costs, damages, or expenses incurred or sustained by anyone resulting from any interpretation made by any of our officers, agents or employees. These interpretations are also subject to our general terms and conditions set out in our current Price Schedule.

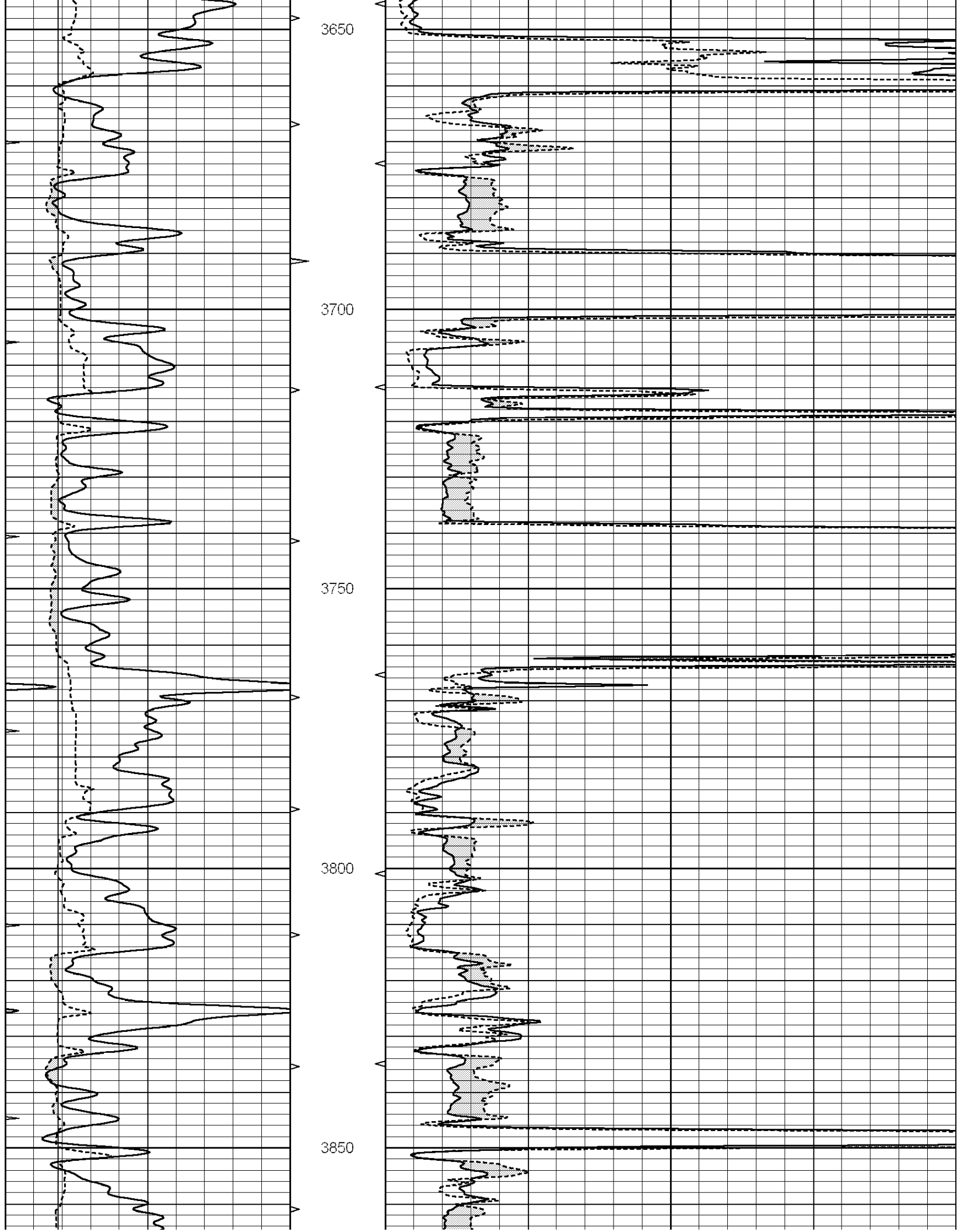
**Comments**

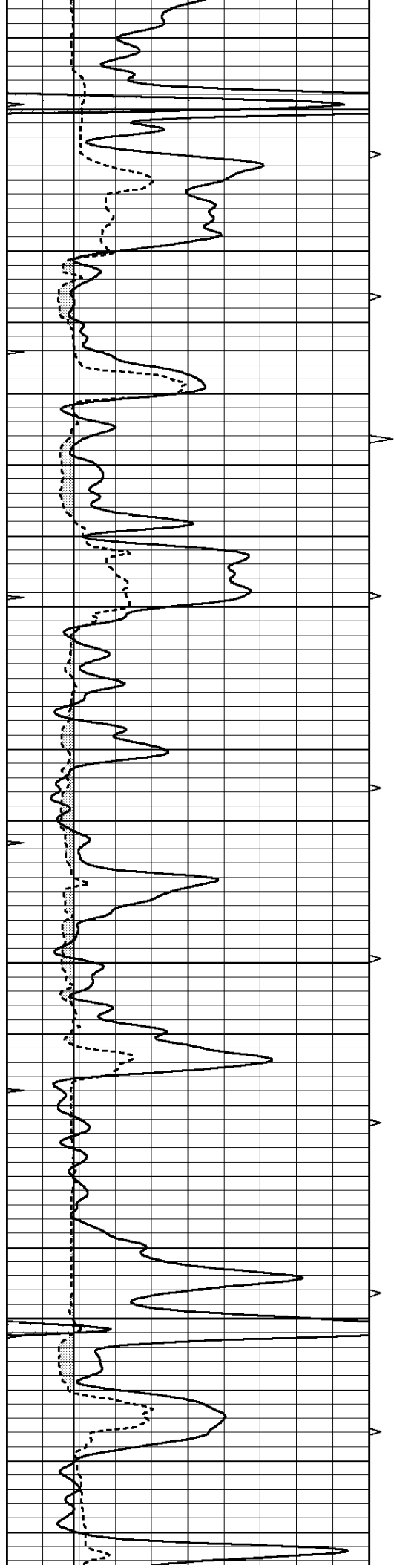
**NABORS COMPLETION & PRODUCTION CO.**  
785-628-6395  
**THANK YOU FOR YOUR BUSINESS**  
DIRECTIONS: GRAINFIELD EXIT, 3 SOUTH TO RD Z, 5 WEST, 2 SOUTH, EAST INTO

0	GAMMA RAY (GAPI)	150
6	MELCAL (in)	16
0	MINMK	20

0	MEL1.5 (Ohm-m)	40
0	MEL2.0 (Ohm-m)	40





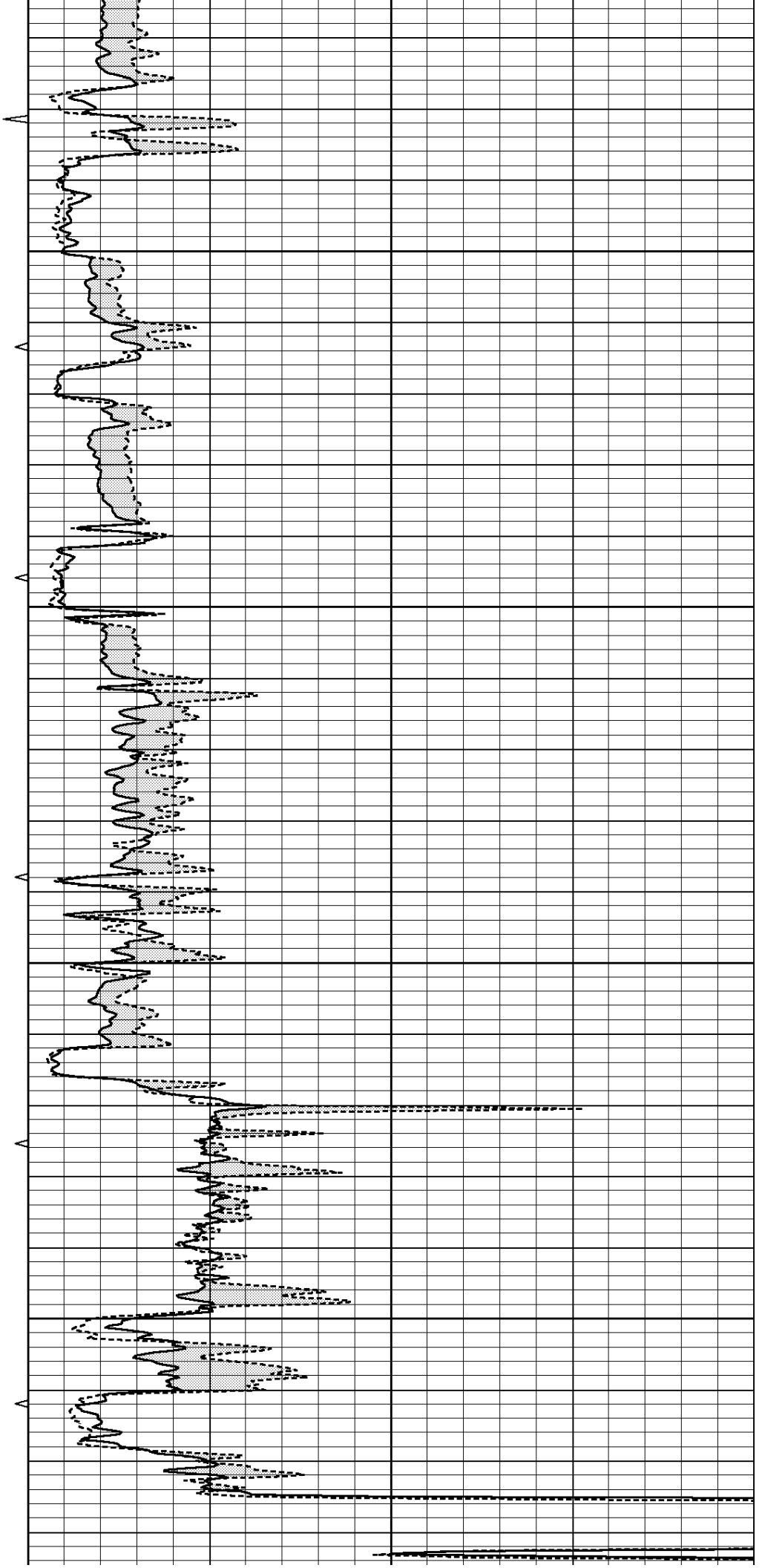


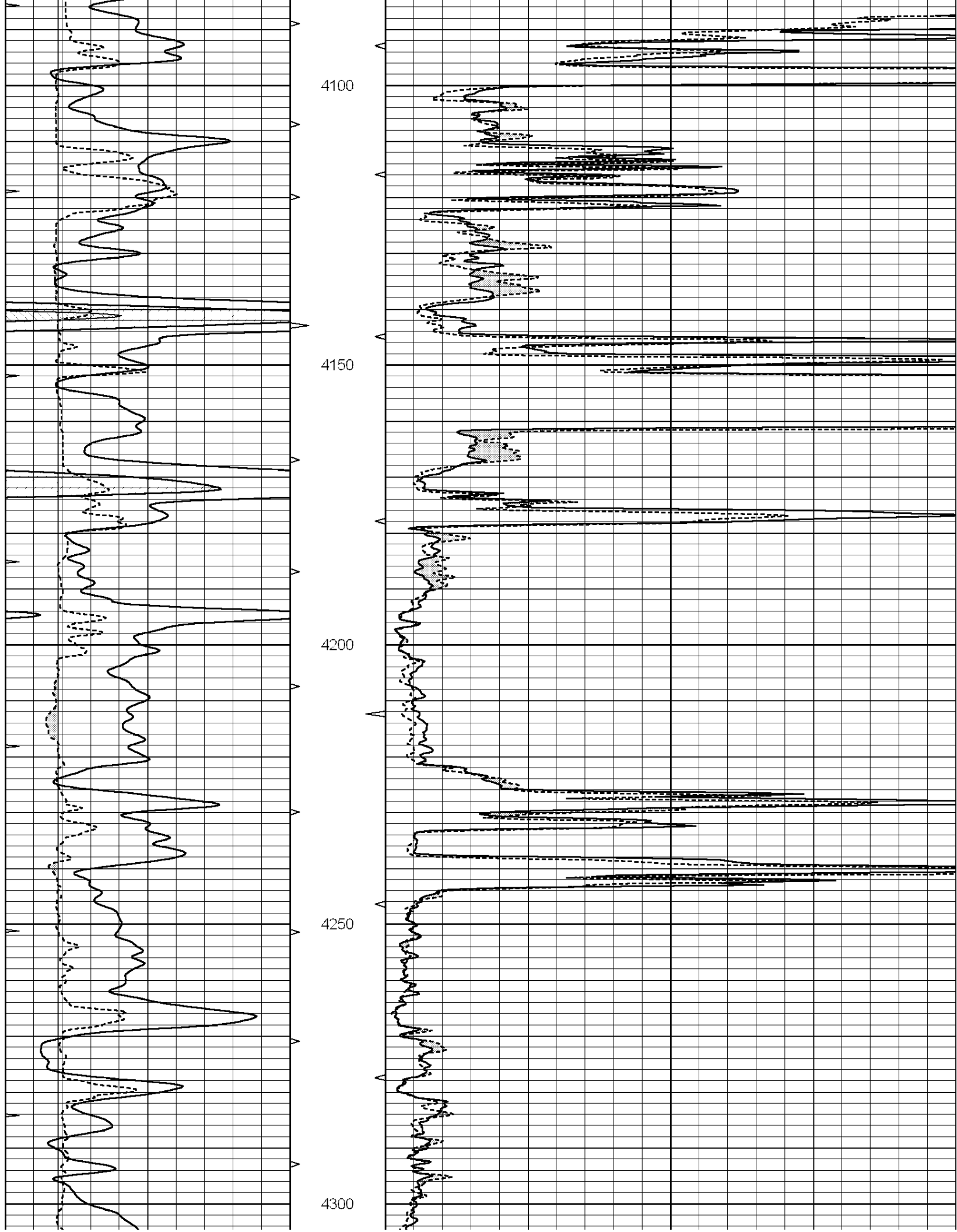
3900

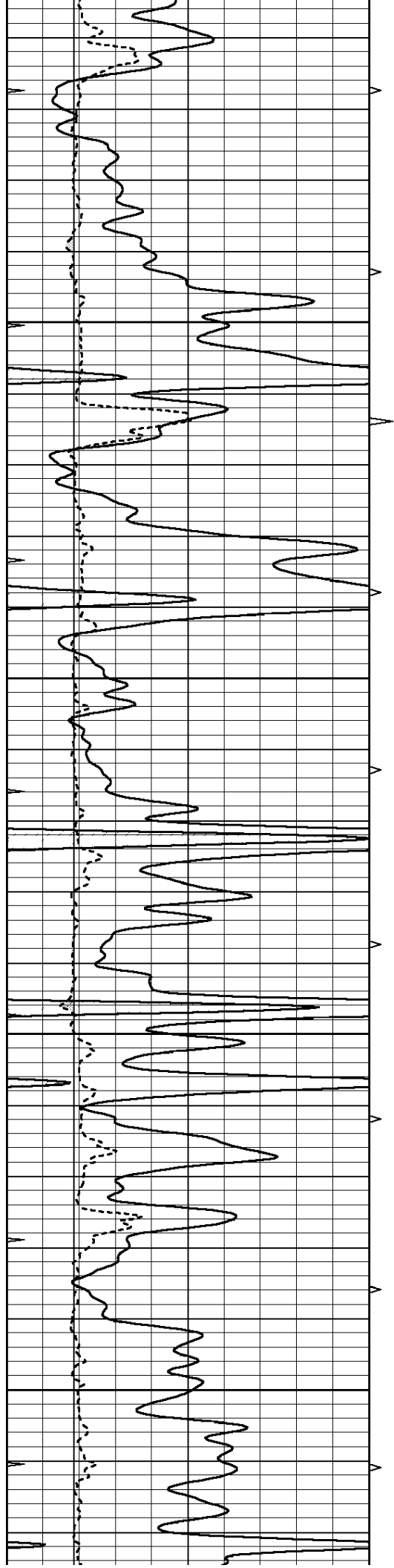
3950

4000

4050





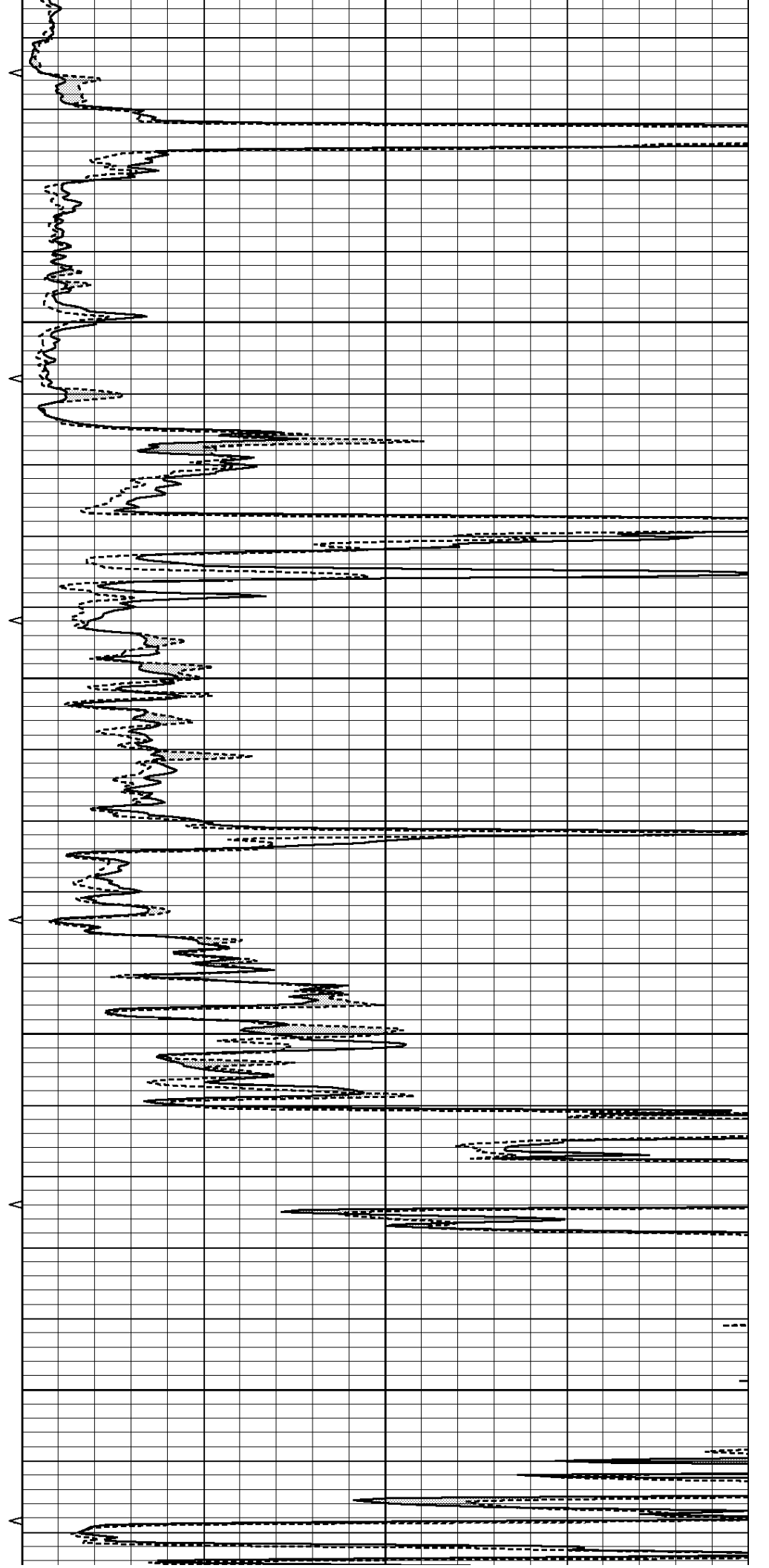


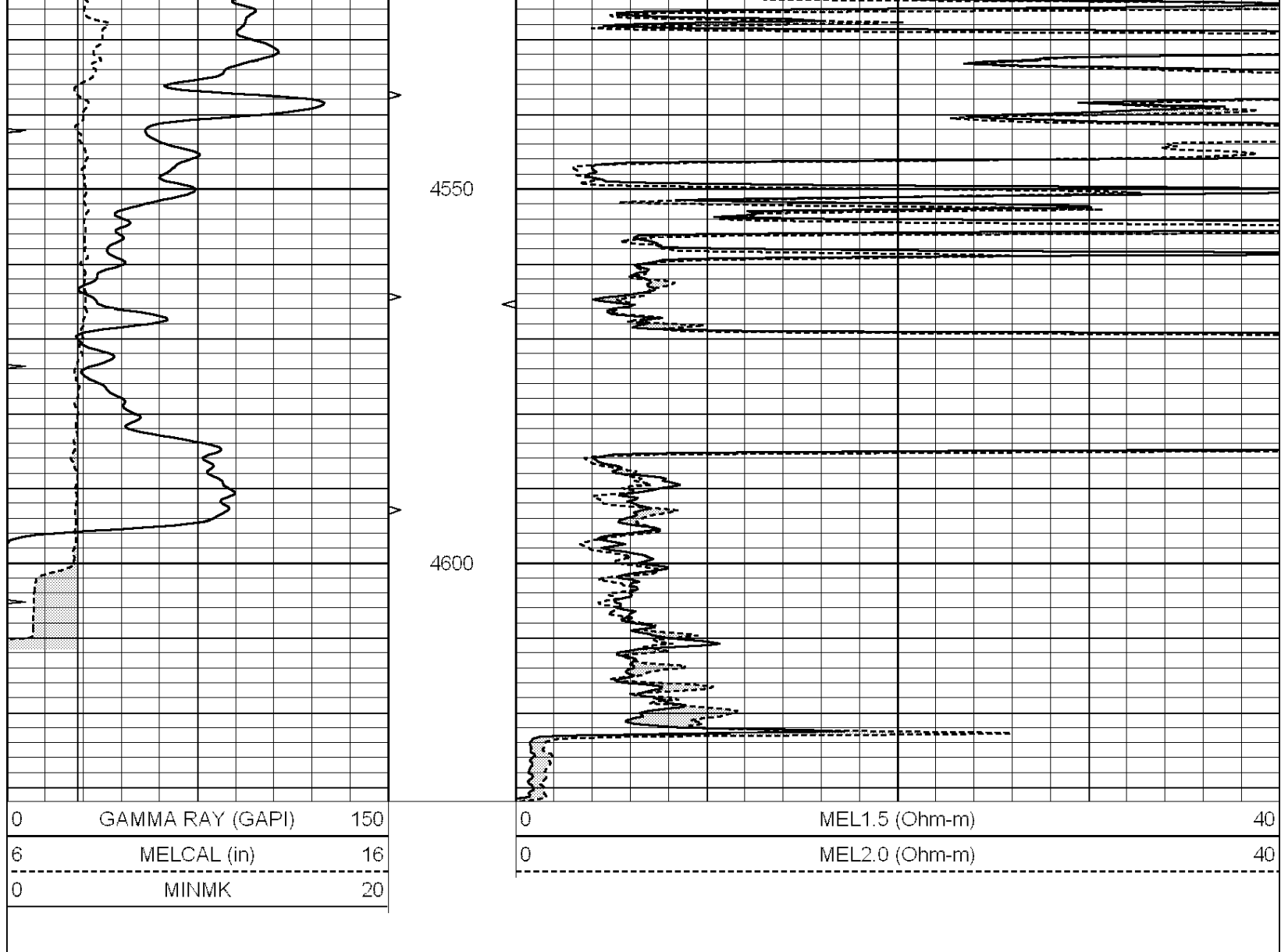
4350

4400

4450

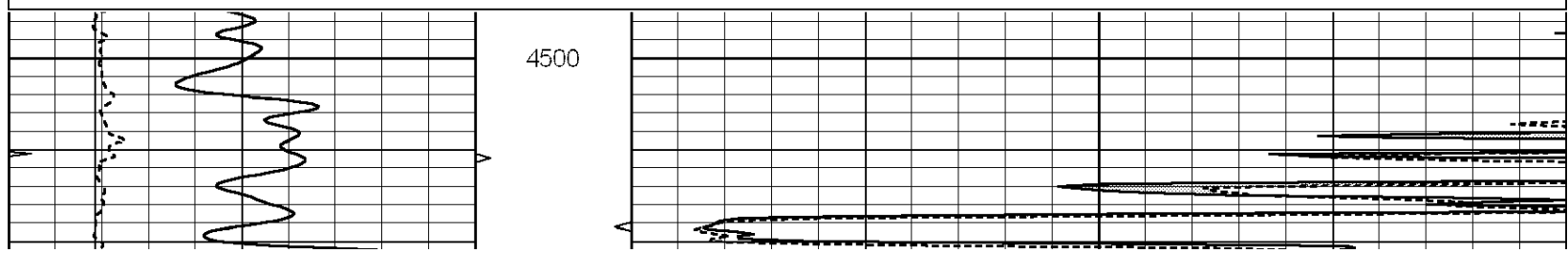
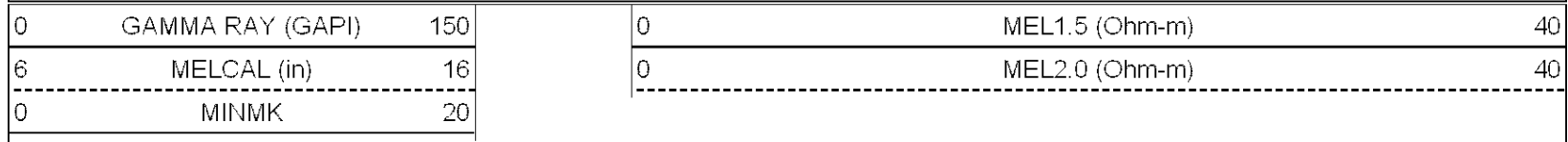
4500

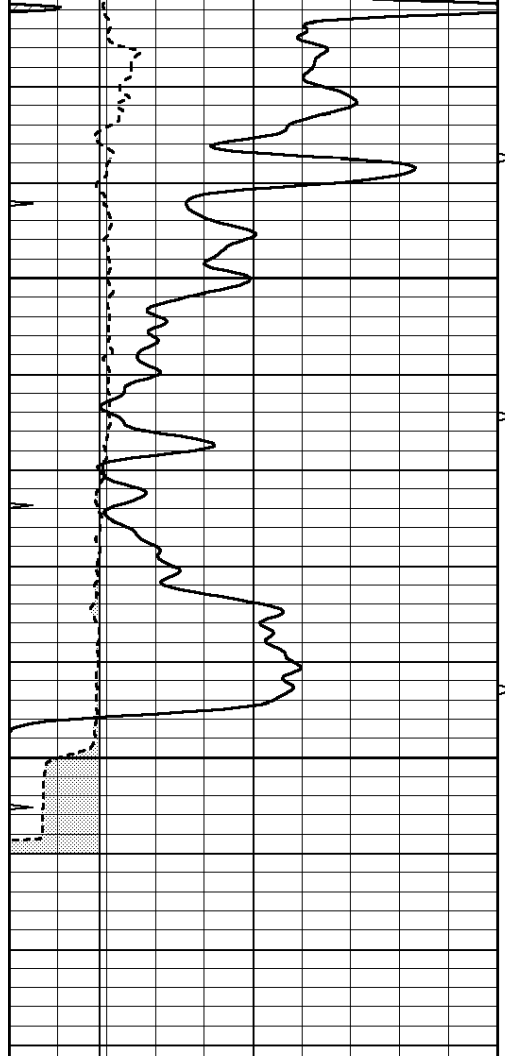




# REPEAT SECTION

Database File: 010674dildn.db  
 Dataset Pathname: pass6.1  
 Presentation Format: micro  
 Dataset Creation: Tue Feb 19 12:25:02 2013 by Calc Open-Cased 090629  
 Charted by: Depth in Feet scaled 1:240

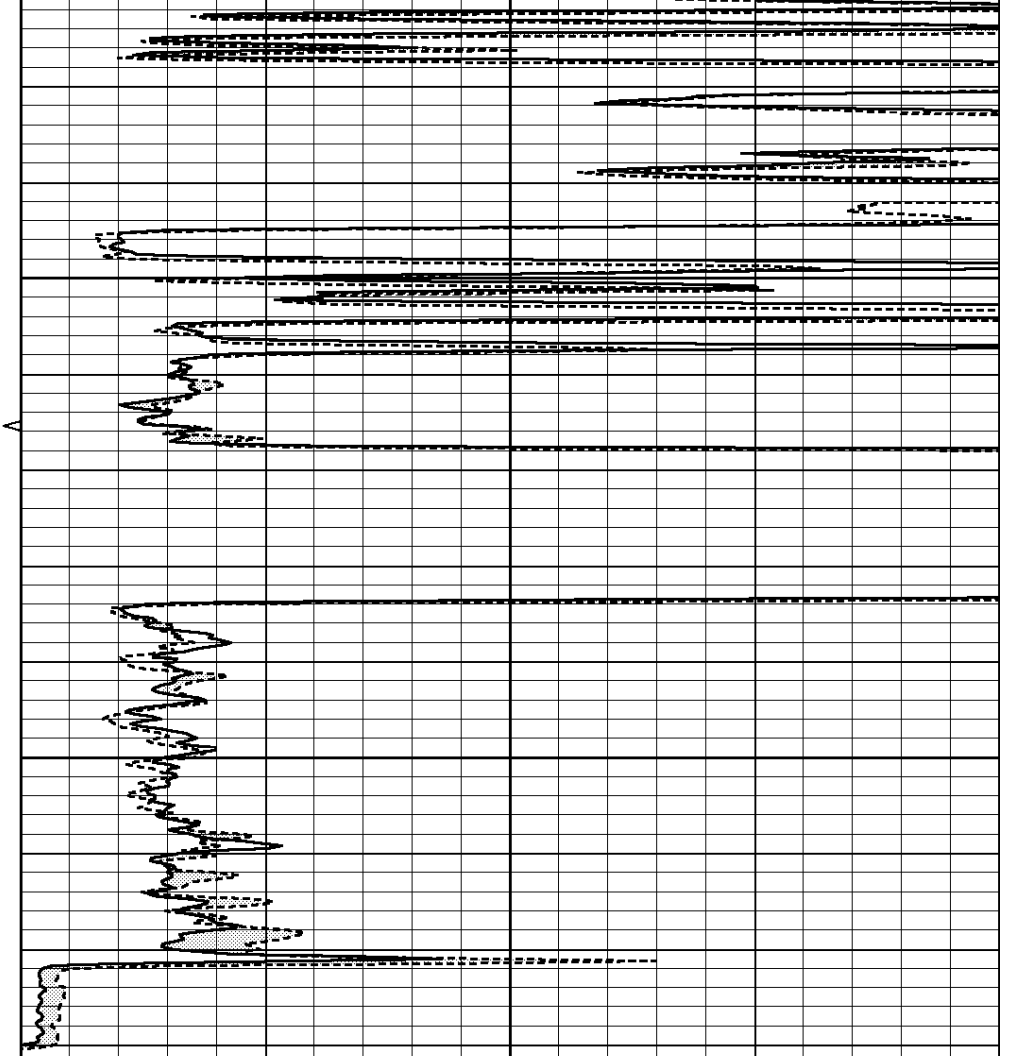




4550

4600

0	GAMMA RAY (GAPI)	150
6	MELCAL (in)	16
0	MINMK	20



0	MEL1.5 (Ohm-m)	40
0	MEL2.0 (Ohm-m)	40