



# MIDWEST SURVEYS

LOGGING - PERFORATING - CONSULTING SERVICES

P.O. Box 68, Osawatomie, KS 66064

913 / 755 - 2128

## GAMMA RAY / NEUTRON / CCL

File No.

API # 15-207-28,543

Company **Haas Petroleum, LLC.**

Well **Massey No. 13i-HP**

Field **Winterscheid**

County **Woodson** State **Kansas**

Location **720' FSL & 1340' FEL  
SE-NE-SW-SE**

Other Services  
**Perforate**

Sec. **35** Twp. **23s** Rge. **14e**  
Permanent Datum **GL** Elevation **1112'**  
Log Measured From **GL**  
Drilling Measured From **KB 7' From GL**

Elevation  
K.B. **1119'**  
D.F. **NA**  
G.L. **1112'**

Date	05-23-2013		
Run Number	One		
Depth Driller	1739.0		
Depth Logger	1723.0		
Bottom Logged Interval	1722.0		
Top Log Interval	20.0		
Fluid Level	Full		
Type Fluid	Water		
Density / Viscosity	NA		
Salinity - PPM Cl	NA		
Max Recorded Temp	NA		
Estimated Cement Top	0.0		
Equipment No.	Location	102	Osawatomie
Recorded By	Gary Windisch		
Witnessed By	Mark Haas		

RUN		BORE-HOLE RECORD				CASING RECORD	
No.	BIT	FROM	TO	SIZE	WGT.	FROM	TO
One	12.25"	0.0	40.0	8.625"	28.0 #	0.0	40.0
Two	6.75"	40.0	1739.0	4.50"	10.5 #	0.0	1726.0

<<< Fold Here >>>

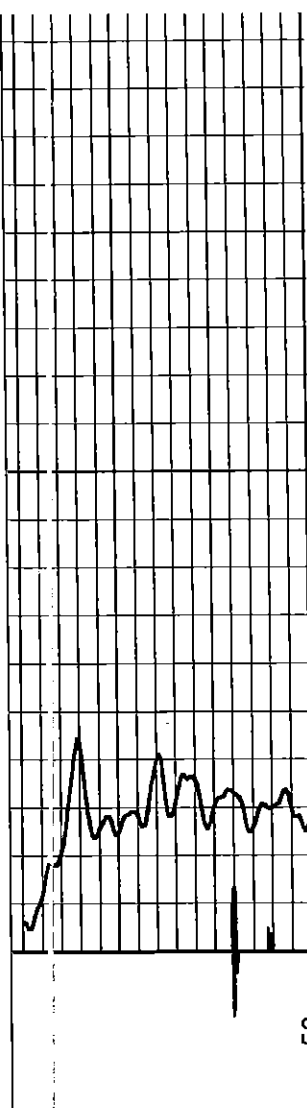
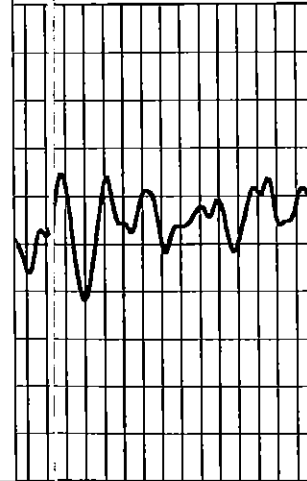
All interpretations are opinions based on inferences from electrical or other measurements and we cannot and do not guarantee the accuracy or correctness of any interpretation, and we shall not, except in the case of gross or willful negligence on our part, be liable or responsible for any loss, costs, damages, or expenses incurred or sustained by anyone resulting from any interpretation made by any of our officers, agents or employees. These interpretations are also subject to our general term and conditions set out in our current Price Schedule.

Comments

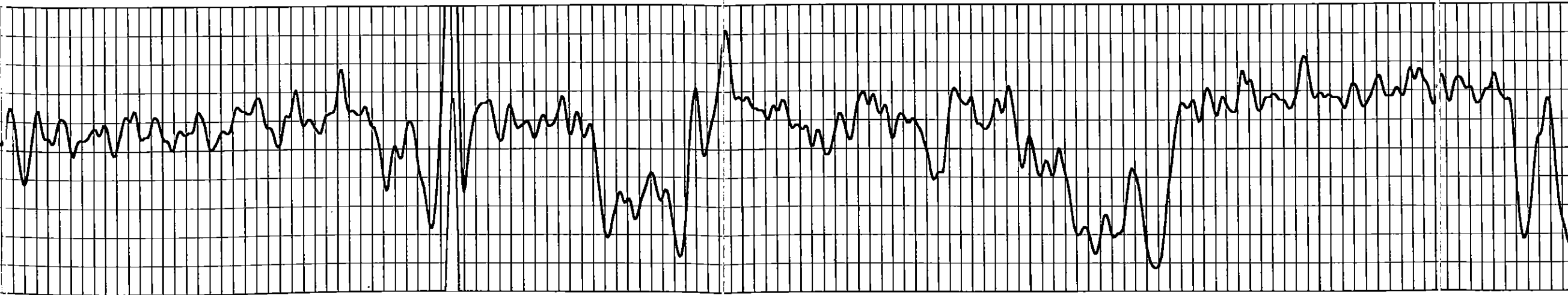
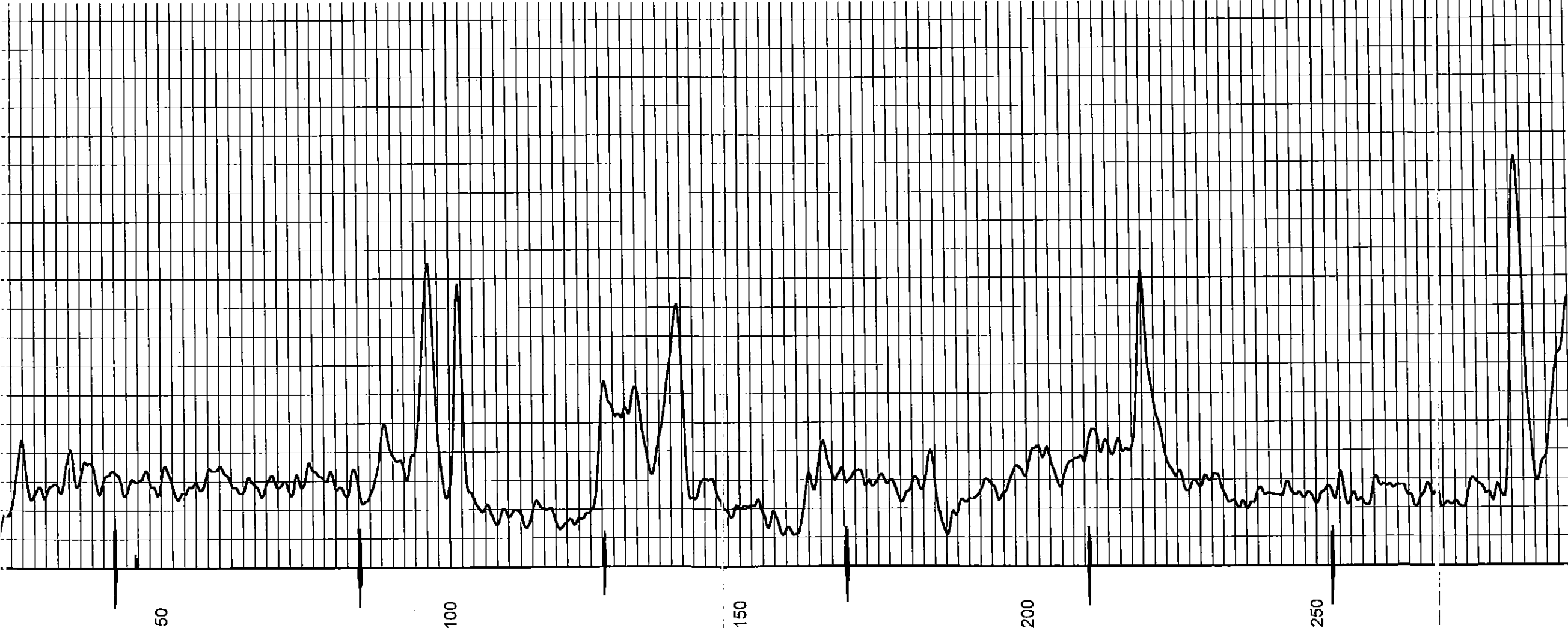
Drilling Contractor :  
Skyy Drilling Rig -3

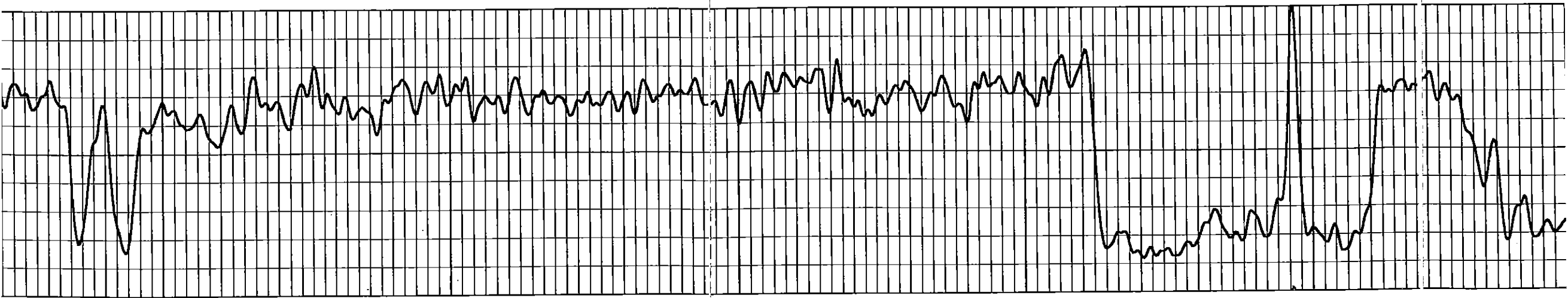
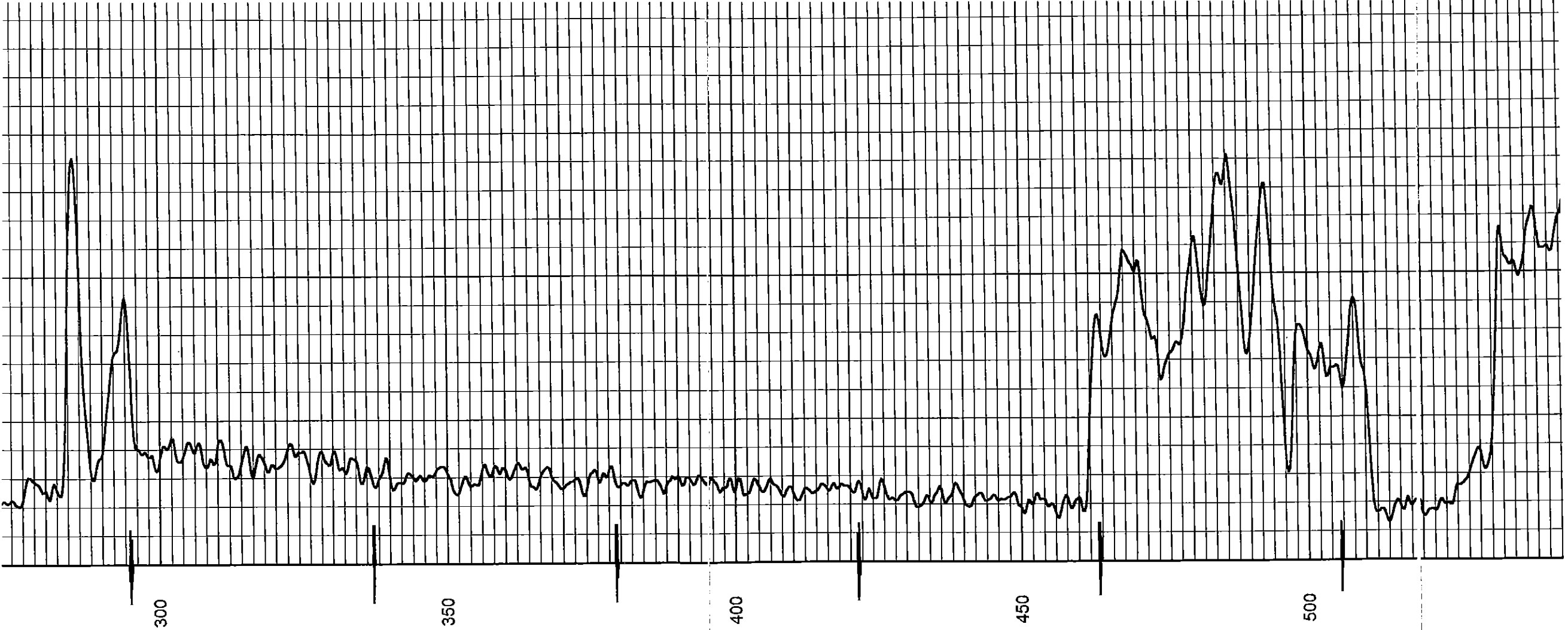
Database File: massey13ihp.db  
Dataset Pathname: pass1  
Presentation Format: gr-n-ccl  
Dataset Creation: Thu May 23 11:12:47 2013 by Log SCH 111116  
Charted by: Depth in Feet scaled 1:240

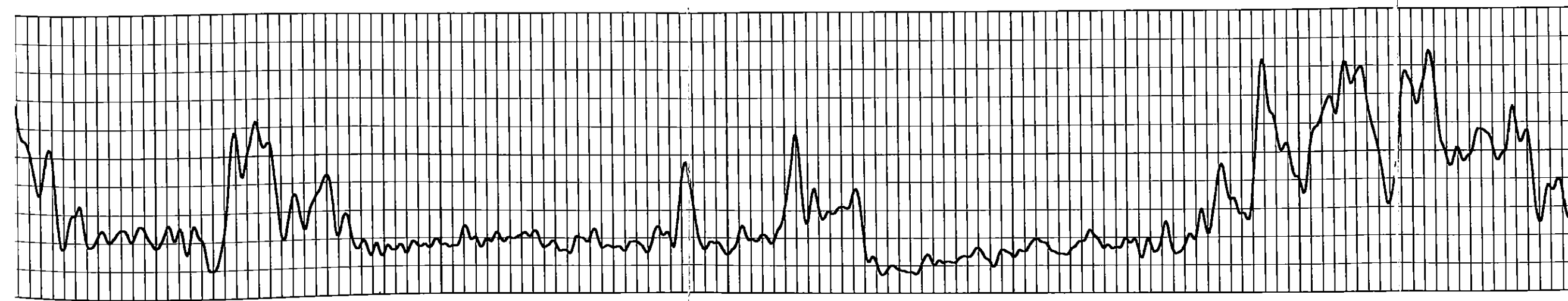
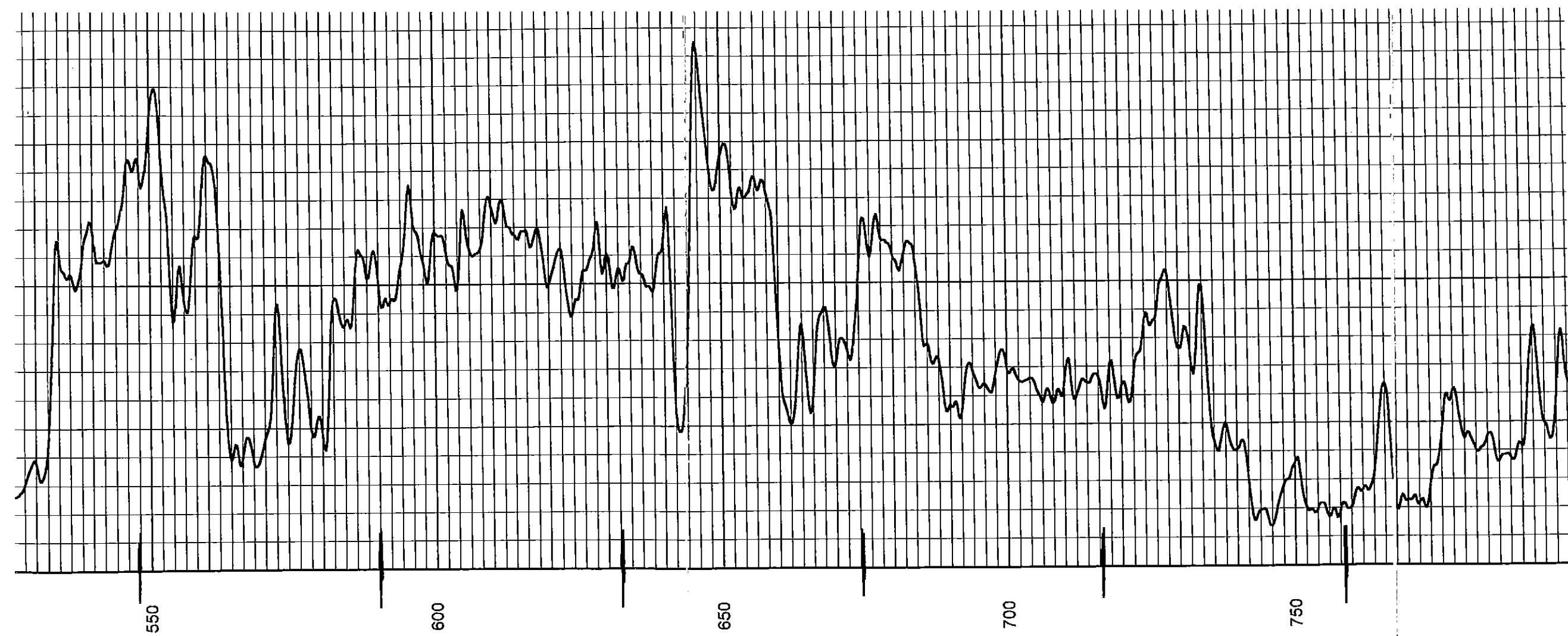
0 Gamma Ray (cps) 150  
150 Gamma Ray (cps) 300  
-1 CCL 1  
100 Neutron (cps) 190

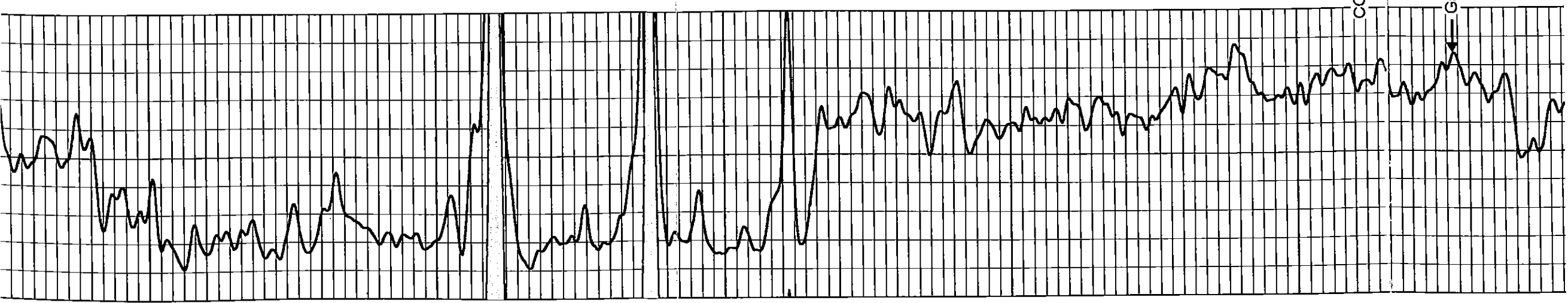
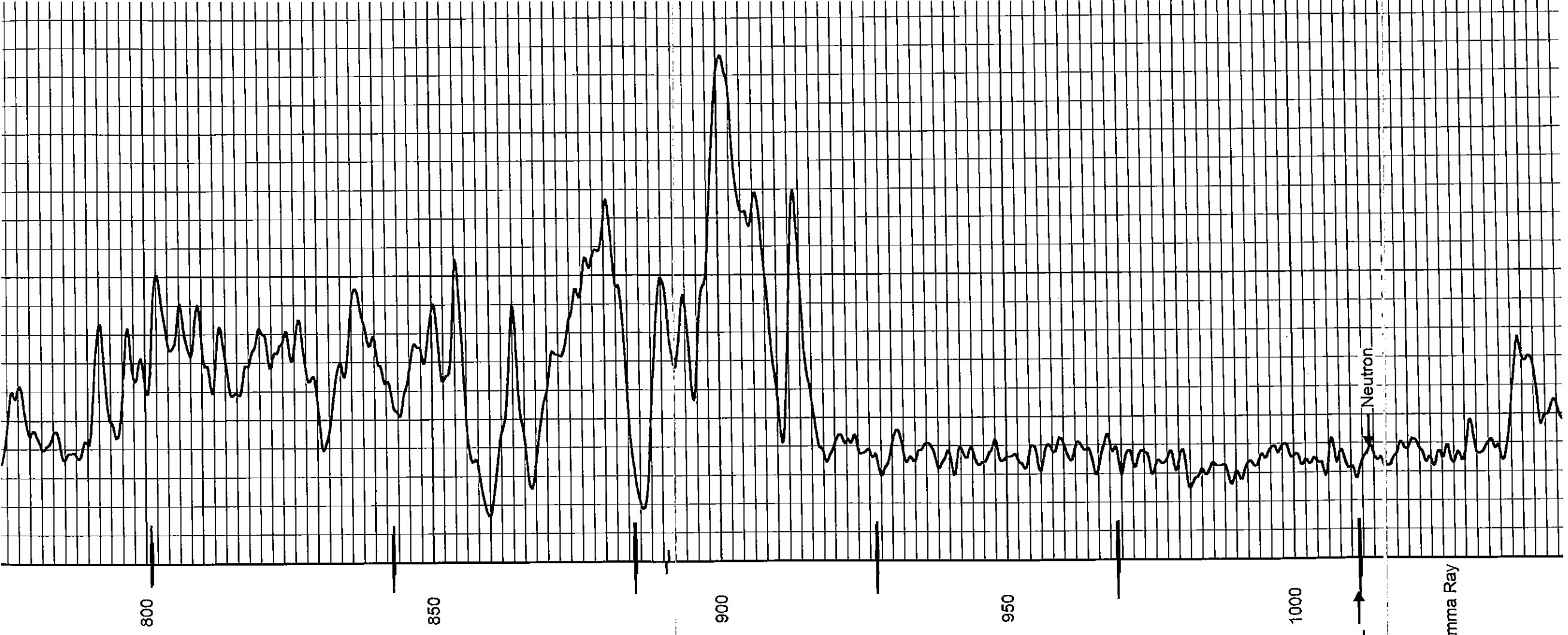


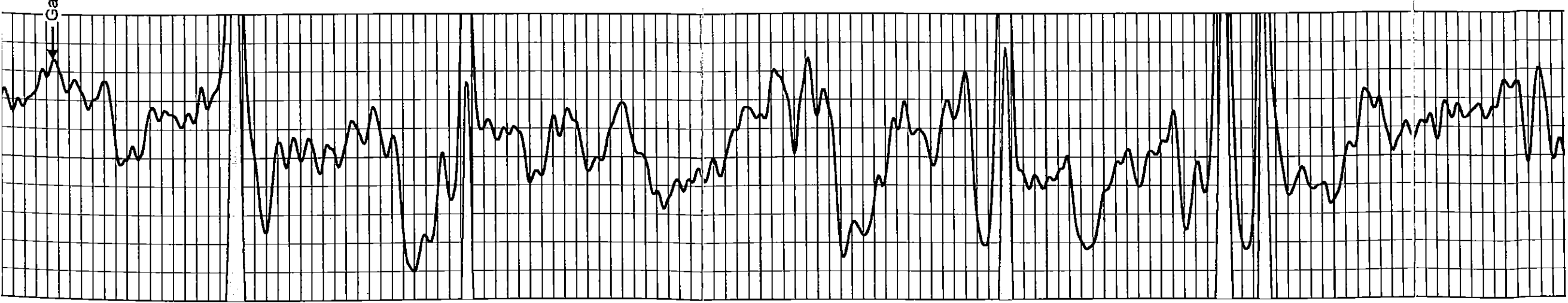
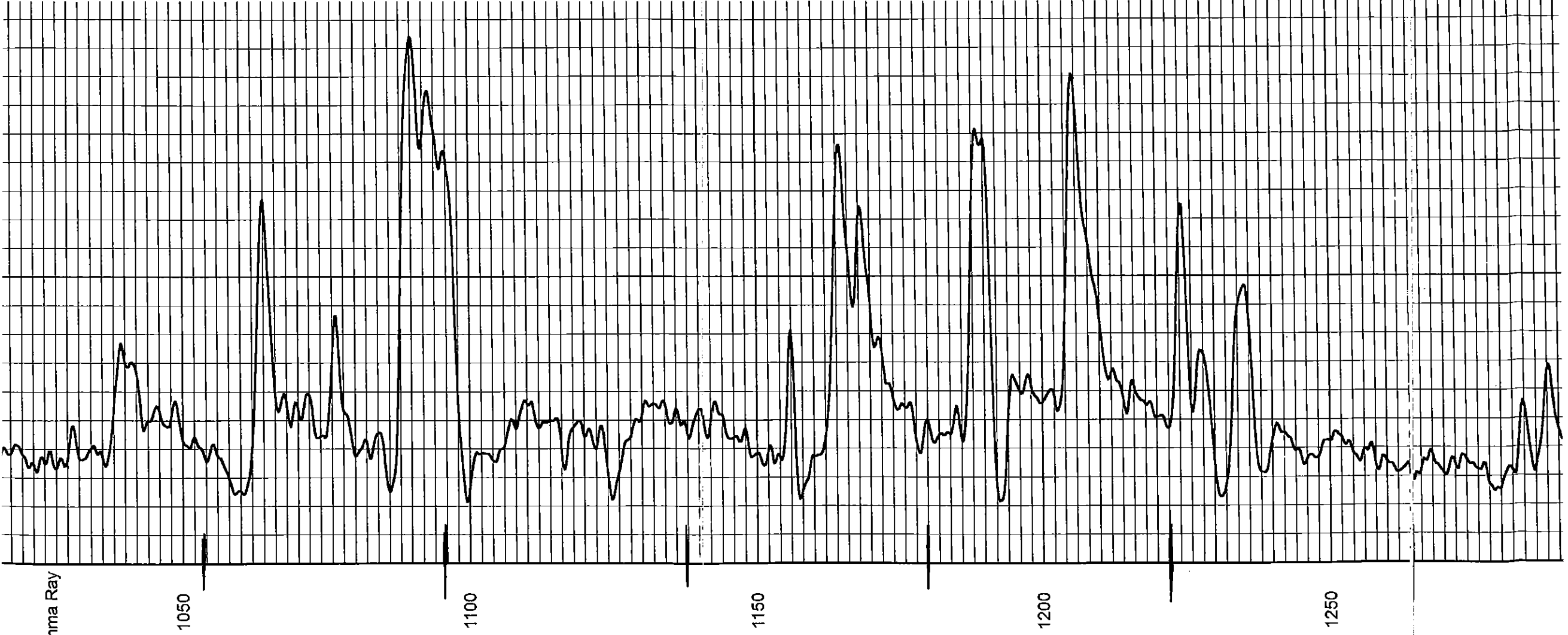
50

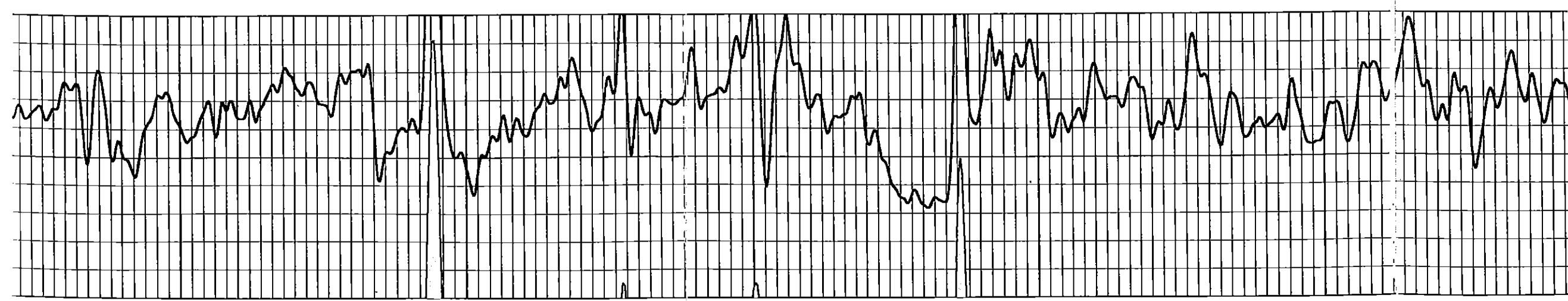
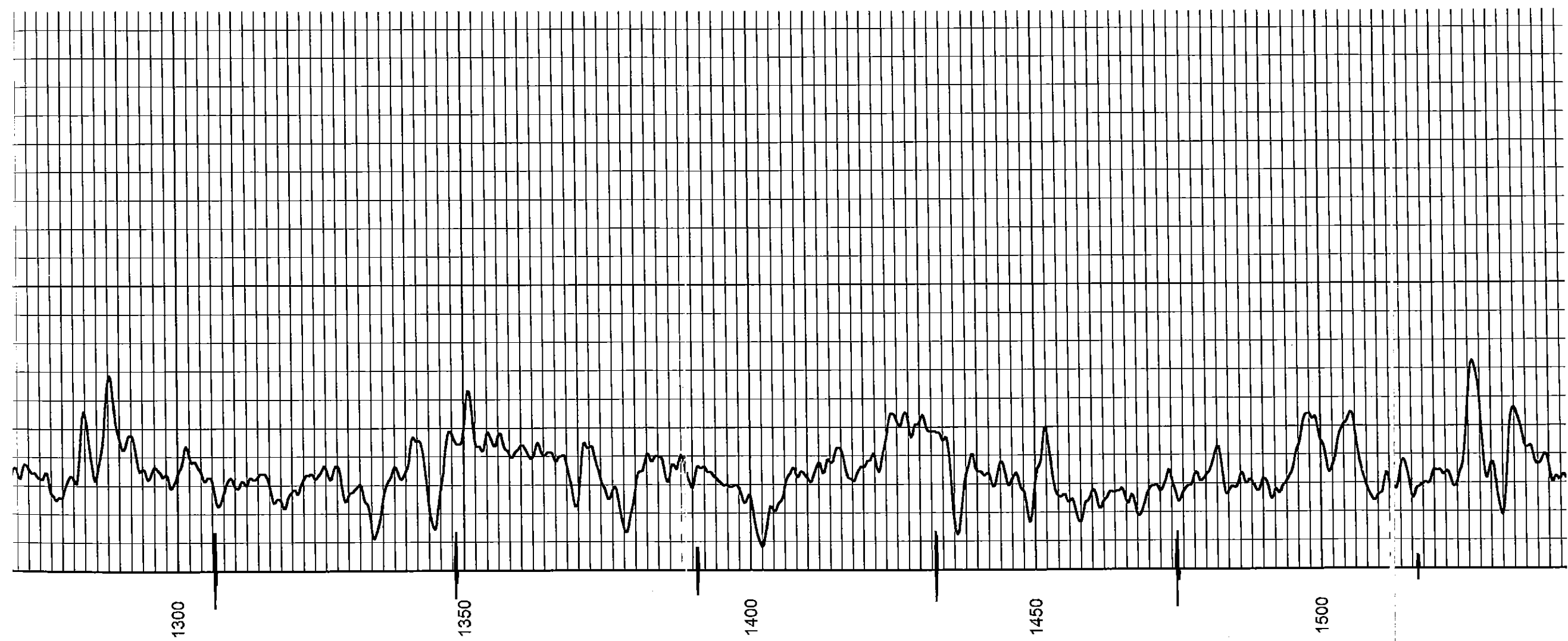


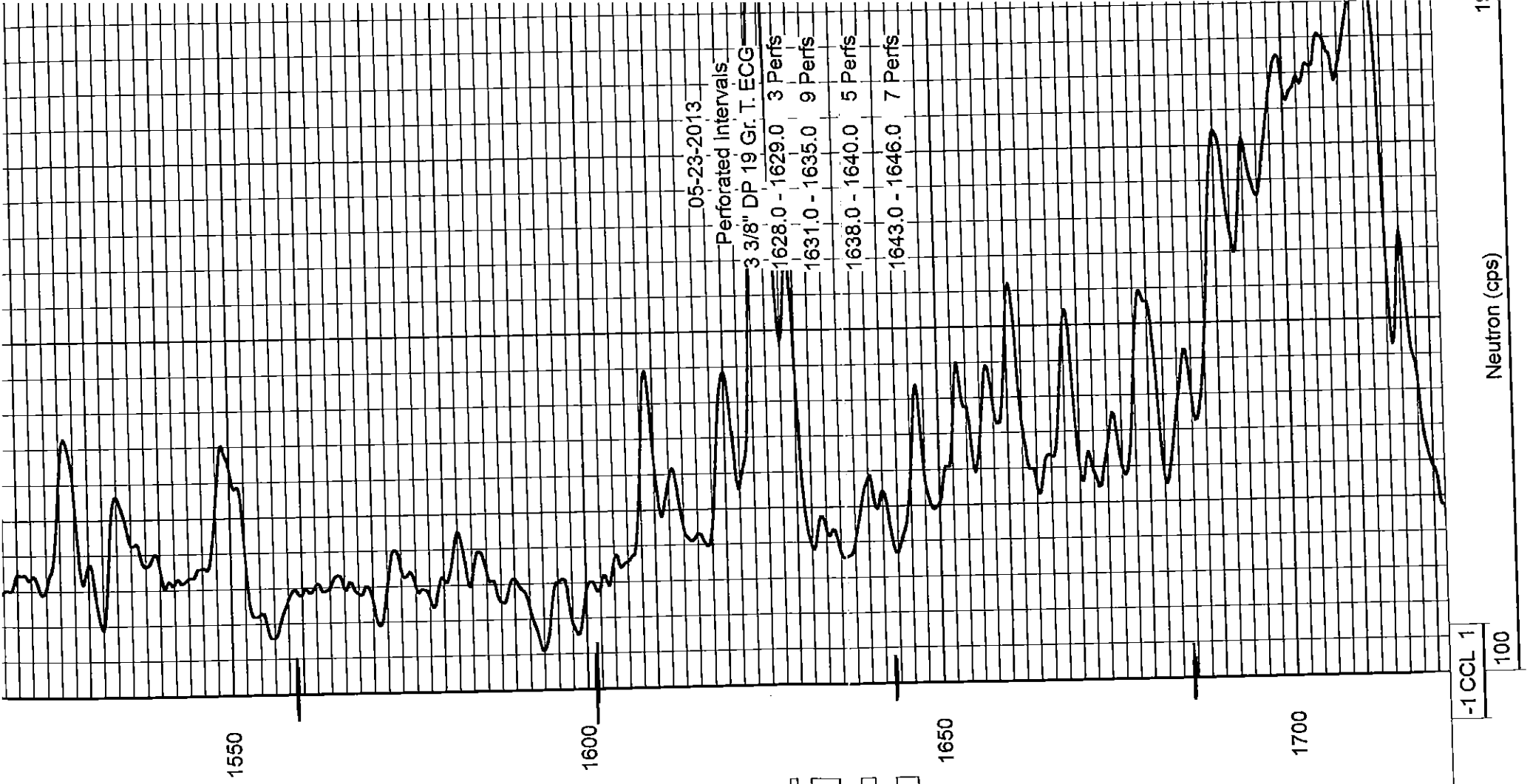
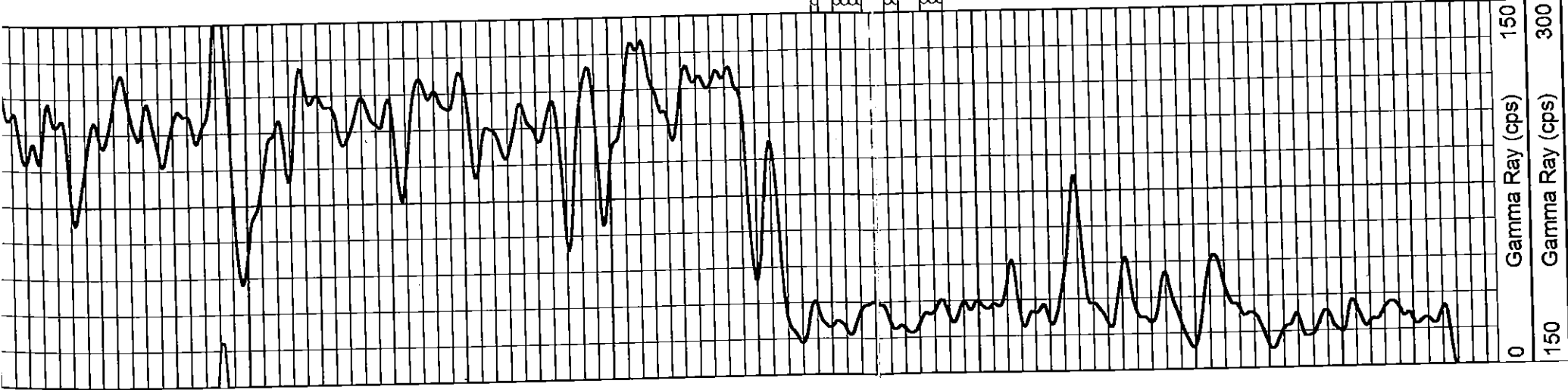












05-23-2013  
 Perforated Intervals:  
 3 3/8" DP 19 Gr. T. ECG  
 1628.0 - 1629.0 3 Perfs  
 1631.0 - 1635.0 9 Perfs  
 1638.0 - 1640.0 5 Perfs  
 1643.0 - 1646.0 7 Perfs

-1CCL 1  
 100

Gamma Ray (cps) 150  
 Gamma Ray (cps) 300