



Pioneer Energy Services

Sonic Cement
Bond Log

15-171-20938-00-00

Company Shakespeare Oil Company
Well Rudolph No. 1-22
Field Wildcat
County Scott
State Kansas

Location

1450' FSL & 1350' FEL

Sec: 22 Twp: 17S Rge: 33W

Other Services
Mast Trailer

Elevation

K.B. 3035
D.F. 3033
G.L. 3025

Permanent Datum Ground Level Elevation 3025
Log Measured From Kelly Bushing 10 Ft. Above Perm. Datum
Drilling Measured From Kelly Bushing

Run Number	One	
Date Survey	4/24/2013	
Date Cementing	4/16/2013	
Type Cementing Operation	Primary	
Depth Driller	4940	
Depth Logger	4865	
Logged Interval	4863 to 3550	to
Casing Driller	5.5 @ T.D.	@
Float Collar -- D.V. Tool	2339	
Squeeze Depth		
Amount & Type Cement		
Amount & Type Admix		
Type Fluid In Hole	Water	
Fluid Level	Full	
Salinity PPM CL		
Weight lb/gal -- Vis.		
Approx. Logged Cement Top	3755	
Calculated Cement Top		
Max. Hole Temperature	119	
Tool No.	R-1	
Spacing Recorded	3-5	
Equipment -- Location	72 Hays	
Recorded By	K. Ladrigan	
Witnessed By	Tom Larson	

<<< Fold Here >>>

All interpretations are opinions based on inferences from electrical or other measurements and we cannot and do not guarantee the accuracy or correctness of any interpretation, and we shall not, except in the case of gross or willful negligence on our part, be liable or responsible for any loss, costs, damages, or expenses incurred or sustained by anyone resulting from any interpretation made by any of our officers, agents or employees. These interpretations are also subject to our general terms and conditions set out in our current Price Schedule.

Comments

Thank you for using Pioneer Energy Services, Inc. 785.625.3858

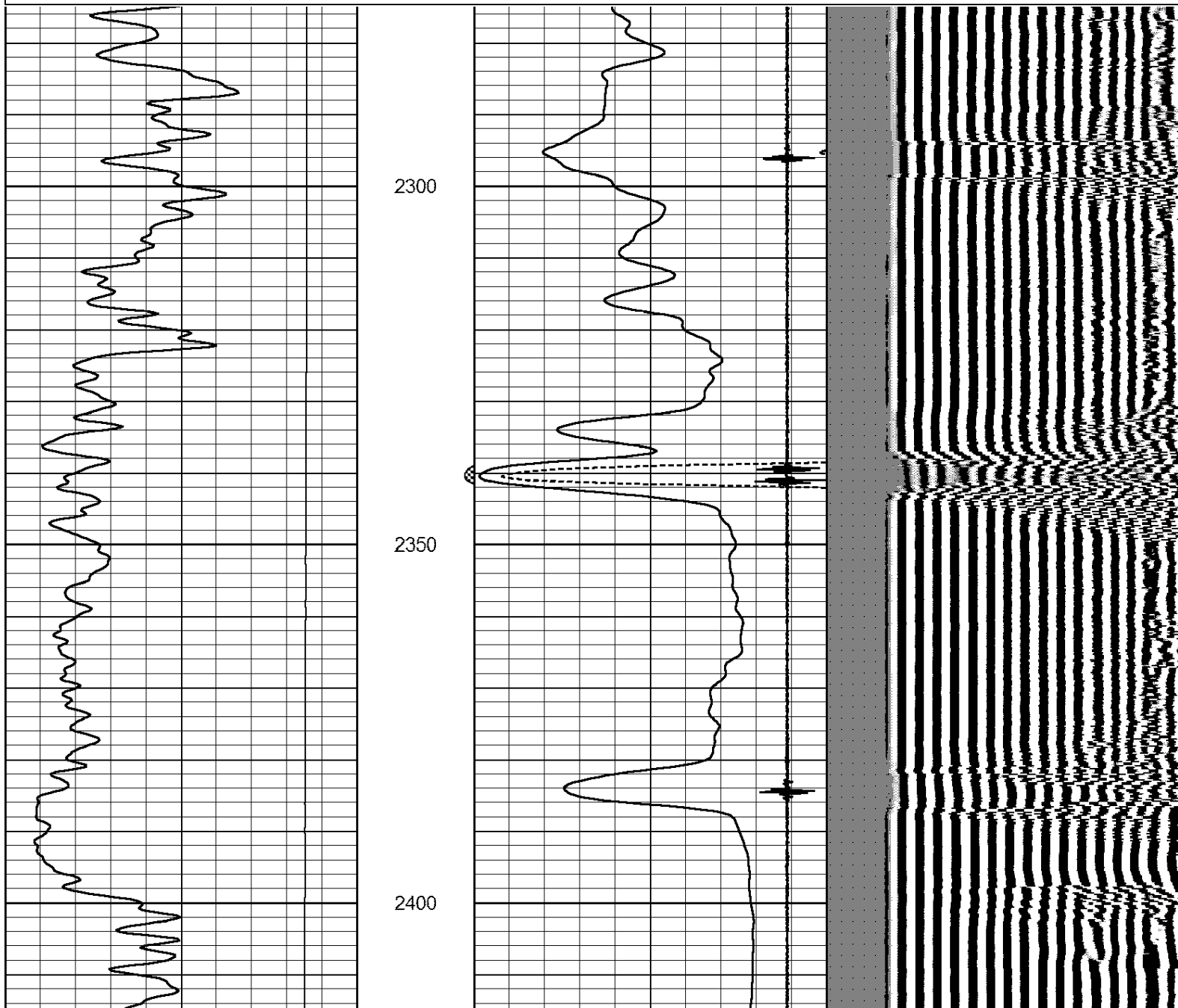
Scott City, KS., 4 North to 190 Road, 2 West to Juniper Road, 1.5 North West Into.



Port Collar @ 2339'

Database File: shake_rudolph1-22.db
 Dataset Pathname: grcbl/pass4
 Presentation Format: cbldr
 Dataset Creation: Wed Apr 24 16:37:51 2013 by Log SCH 111116
 Charted by: Depth in Feet scaled 1:240

0	Gamma Ray	150	amp3ft	8	Casing Collars	-1	200	wvf5ft	1200
			(mV)	0	Amplified Amplitude (mV)	100			
			-100 10	0	Pipe Amplitude (mV)	20			



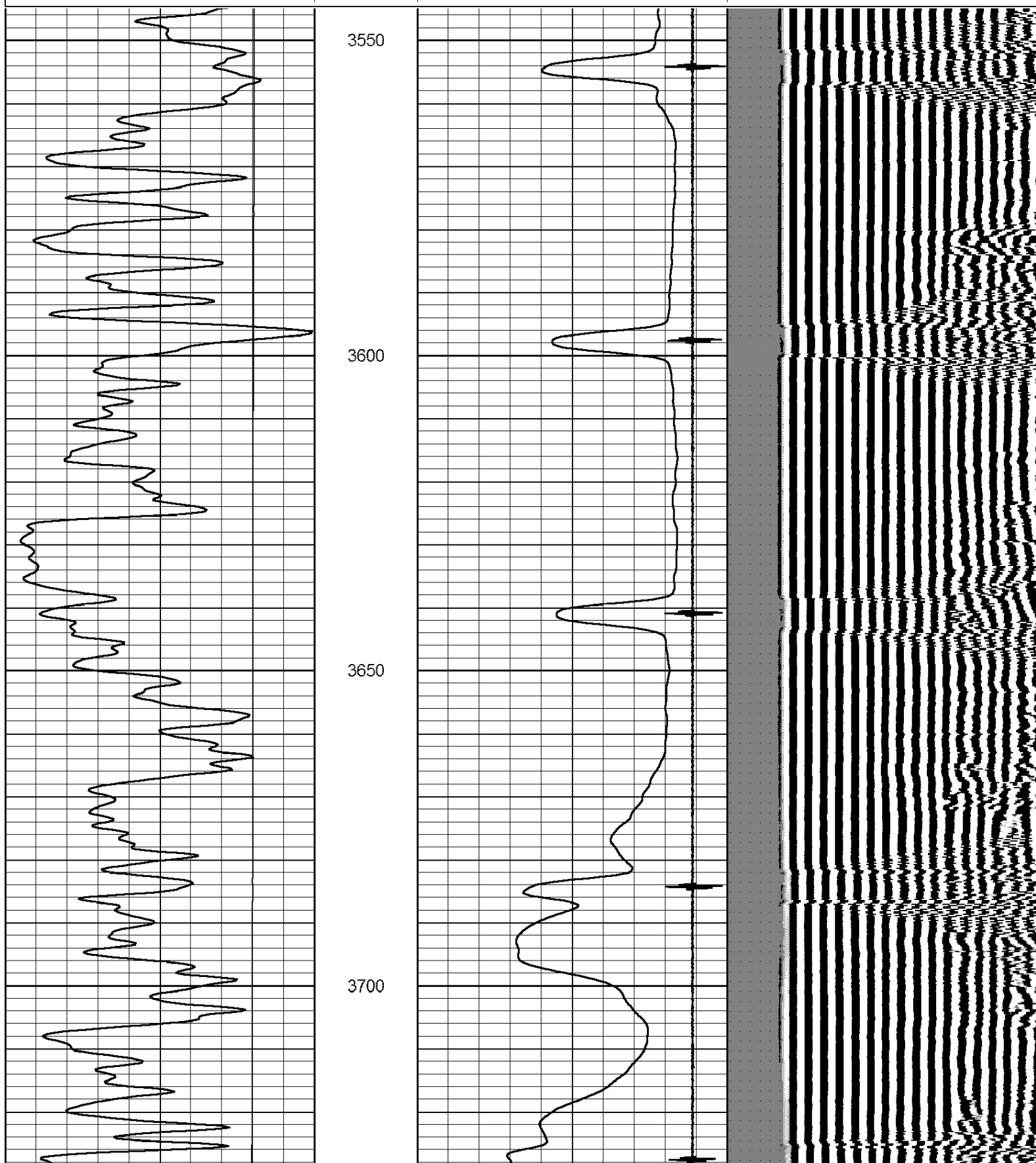
0	Gamma Ray	150	amp3ft	8	Casing Collars	-1	200	wvf5ft	1200
			(mV)	0	Amplified Amplitude (mV)	100			
			-100 10	0	Pipe Amplitude (mV)	20			

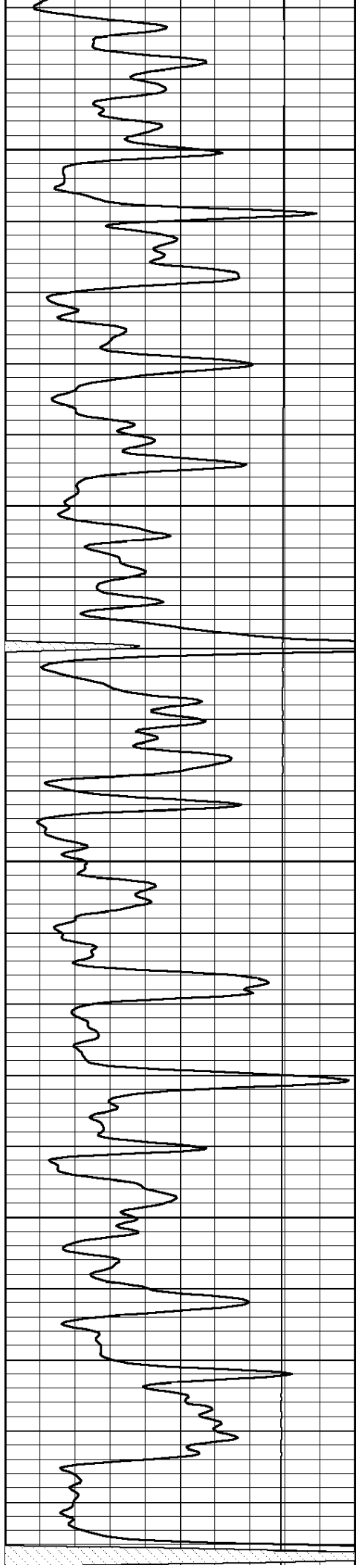


Main Pass

Database File: shake_rudolph1-22.db
 Dataset Pathname: grcbl/pass3.1
 Presentation Format: cblcr
 Dataset Creation: Wed Apr 24 16:40:32 2013
 Charted by: Depth in Feet scaled 1:240

0	Gamma Ray	150	amp3ft	8	Casing Collars	-1	200	wvf5ft	1200
			(mV)	0	Amplified Amplitude (mV)	100			
			-100	10	Pipe Amplitude (mV)	20			





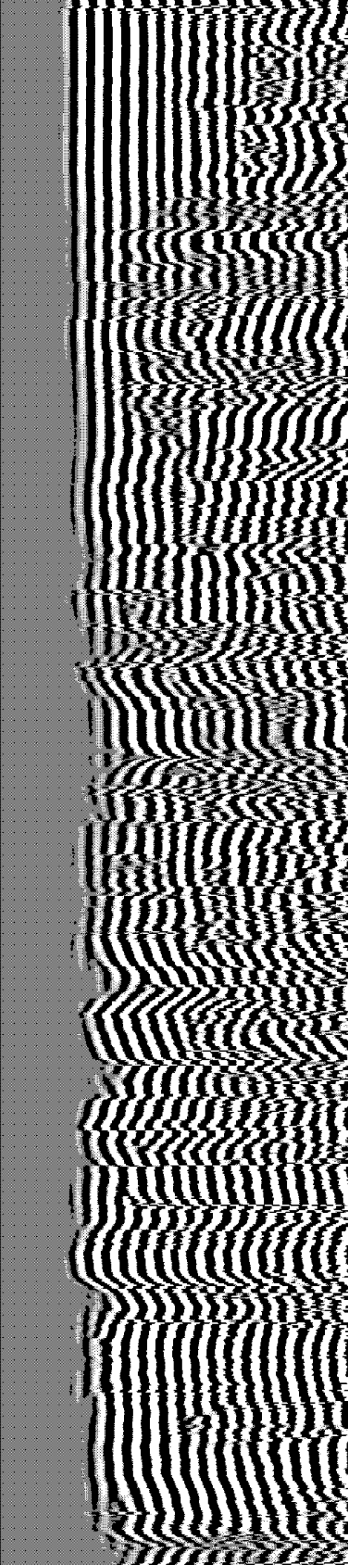
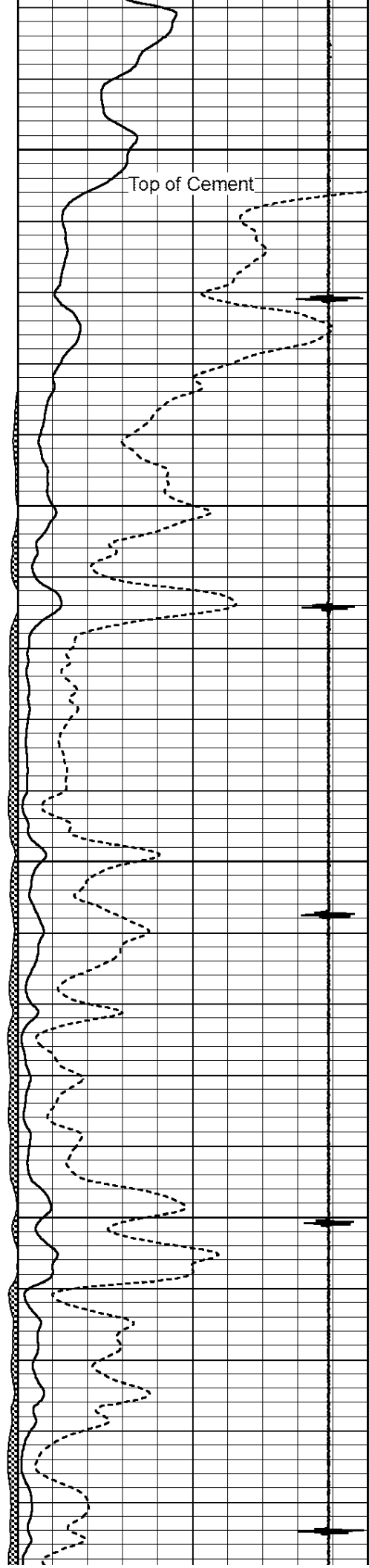
3750

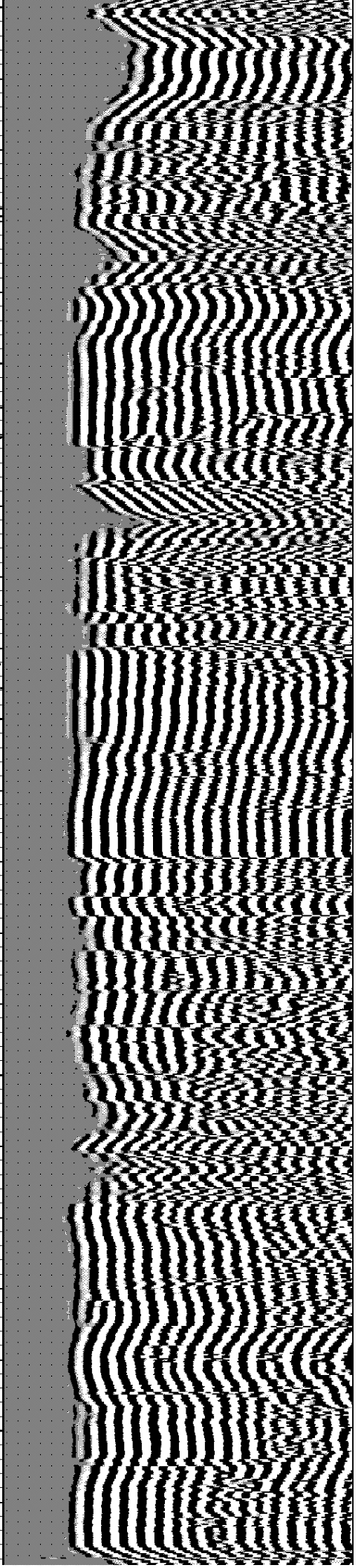
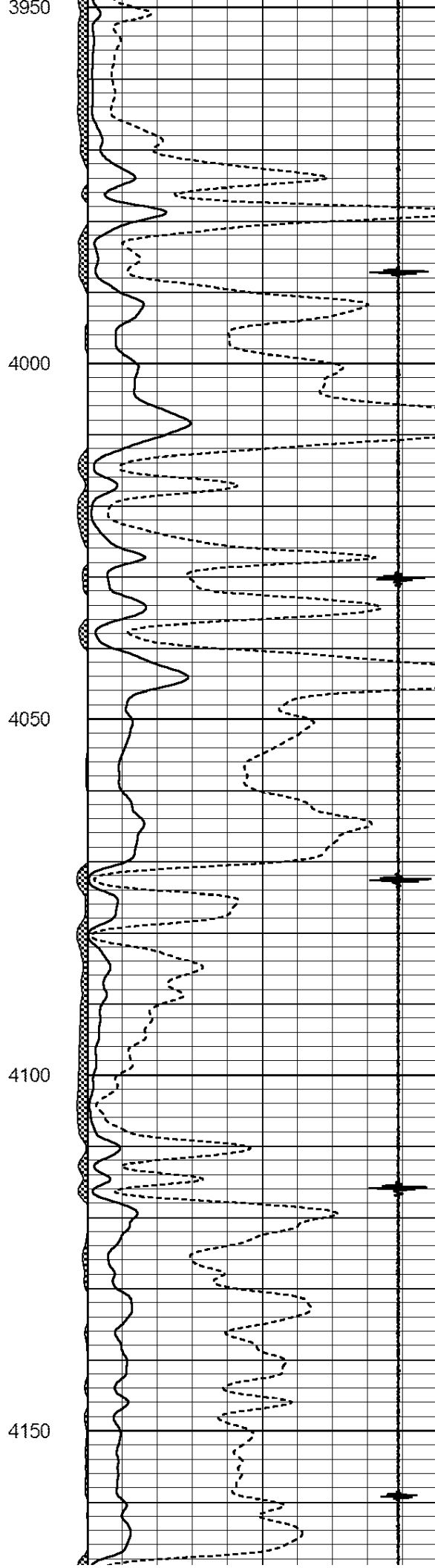
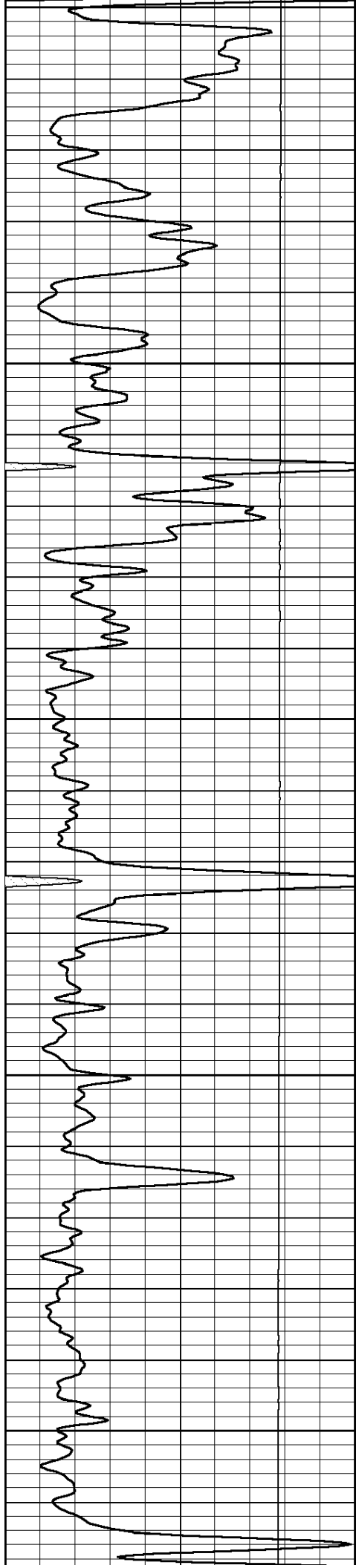
Top of Cement

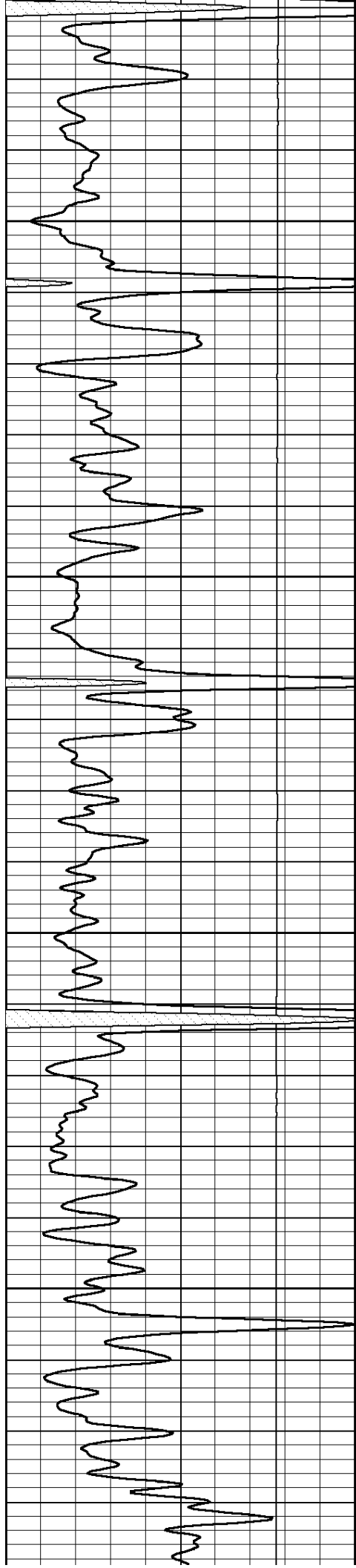
3800

3850

3900





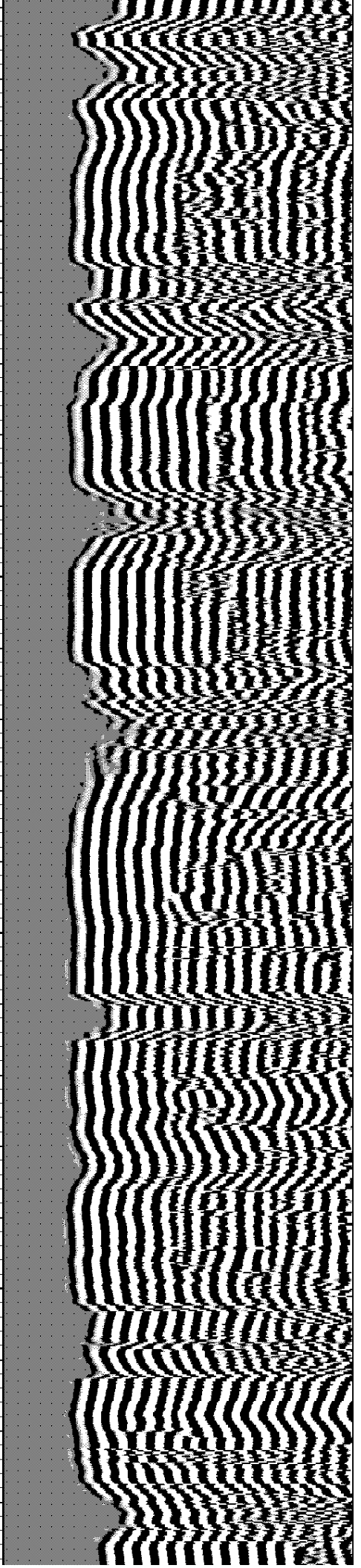
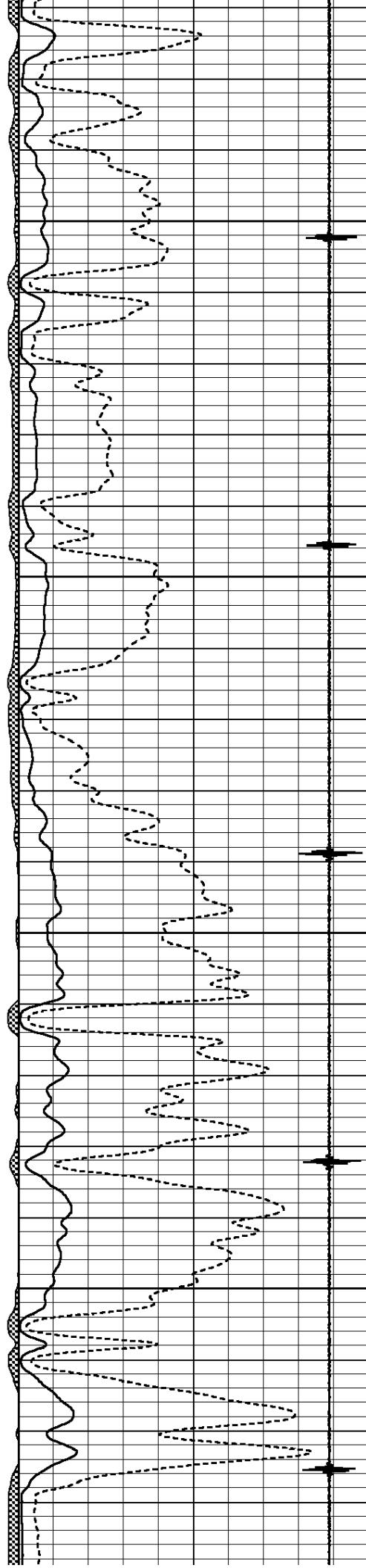


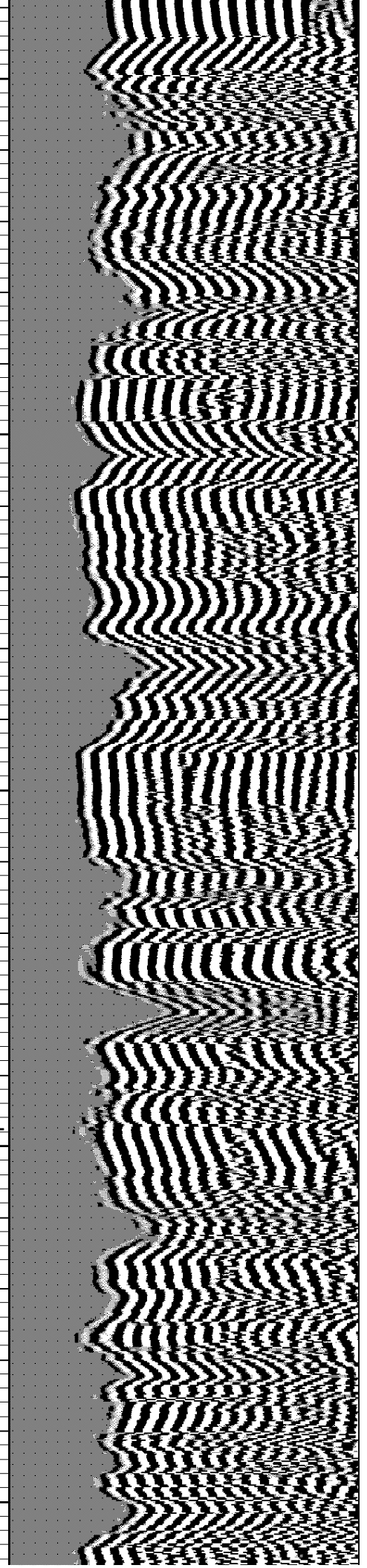
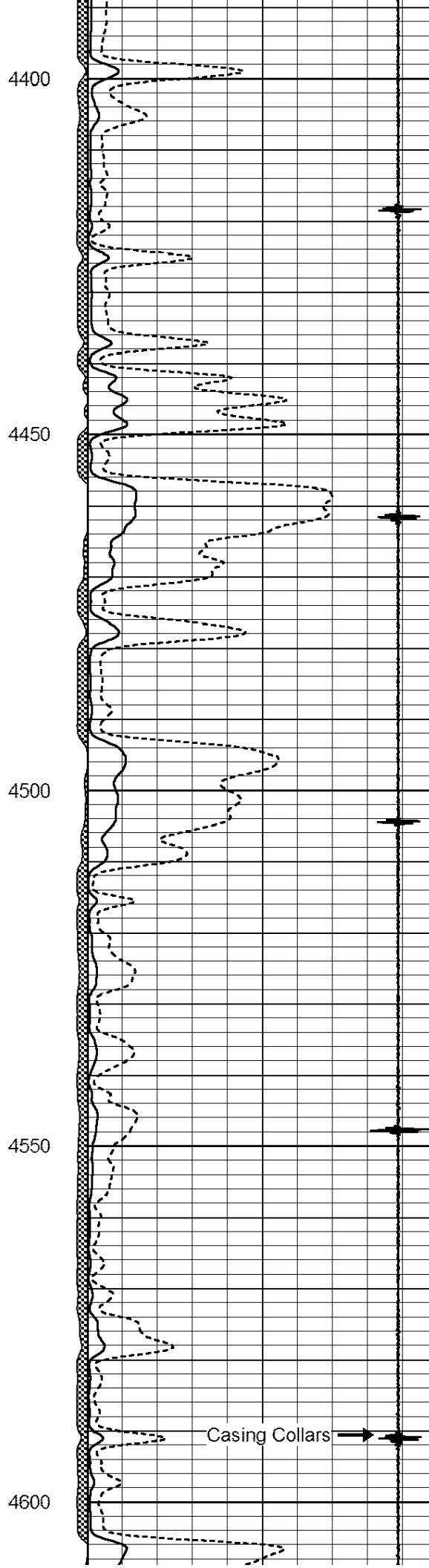
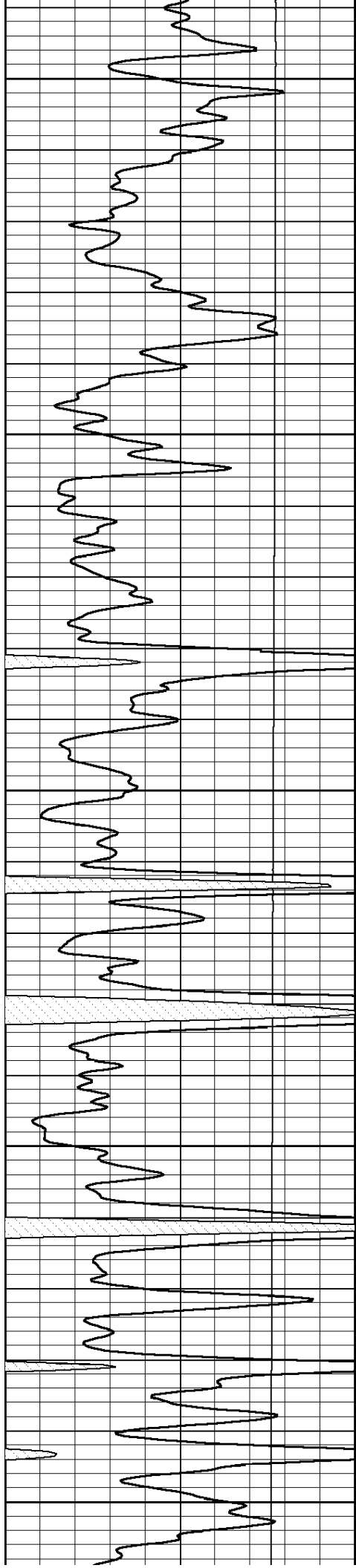
4200

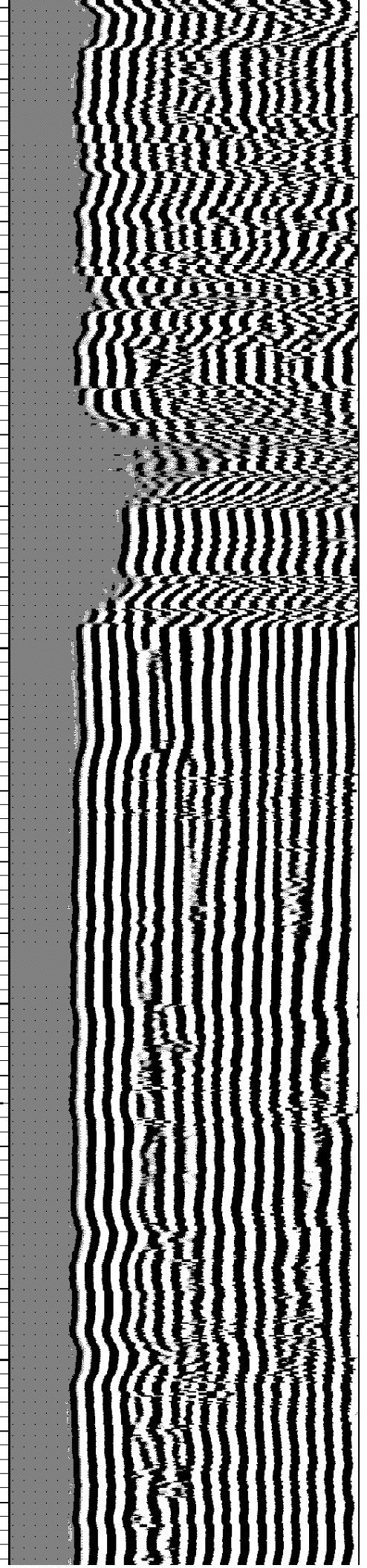
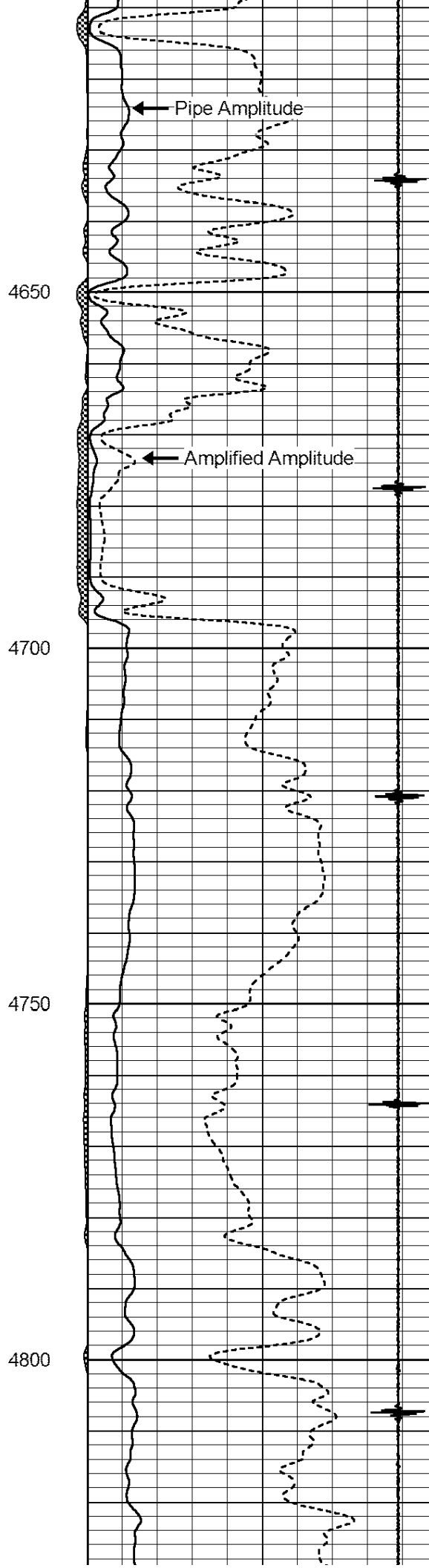
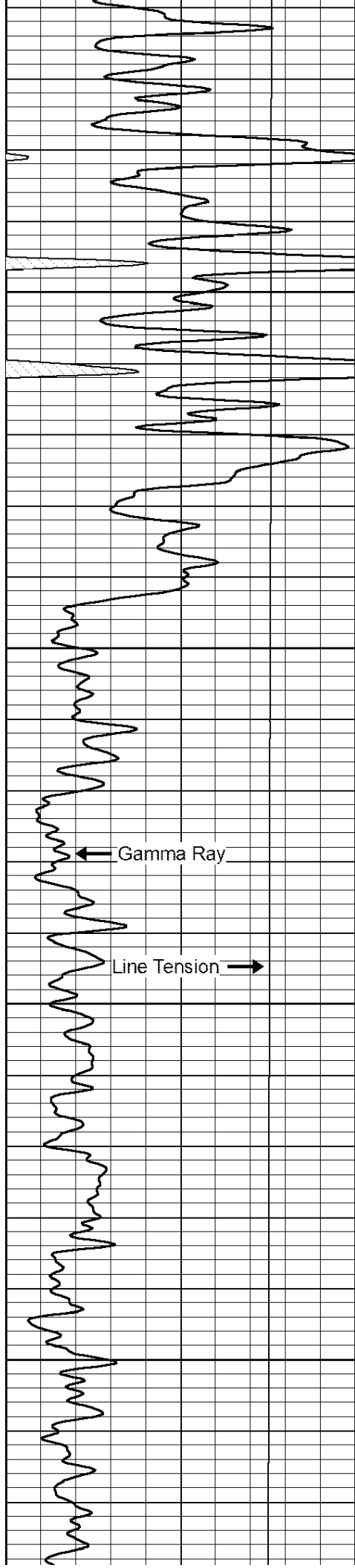
4250

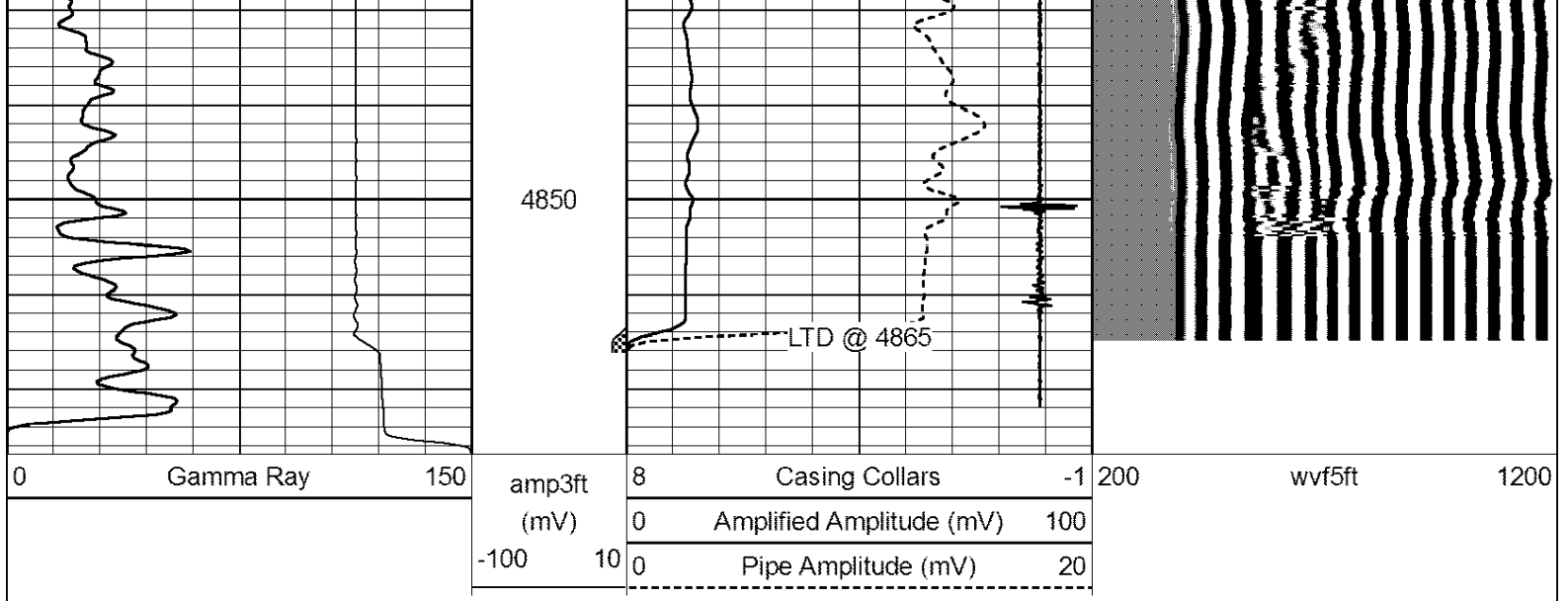
4300

4350



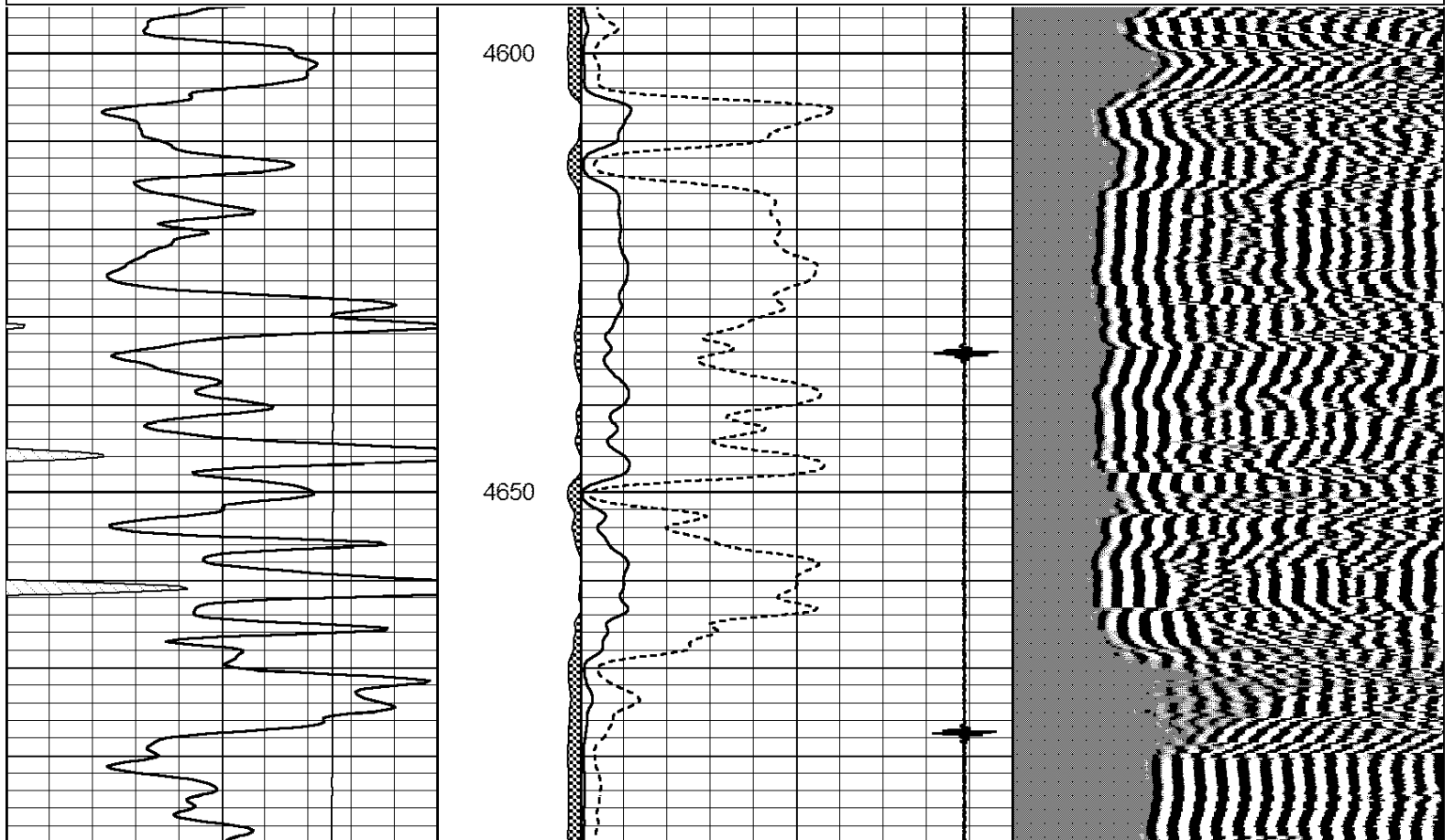
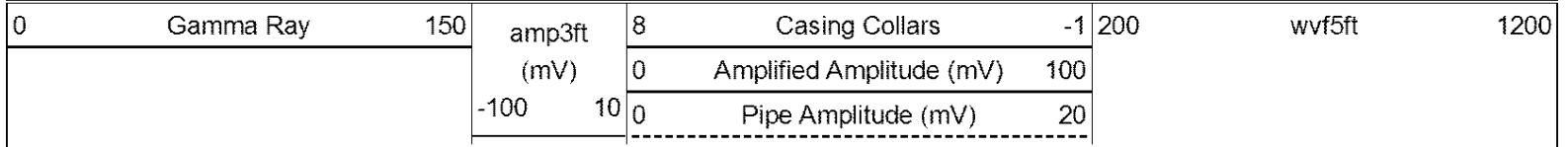


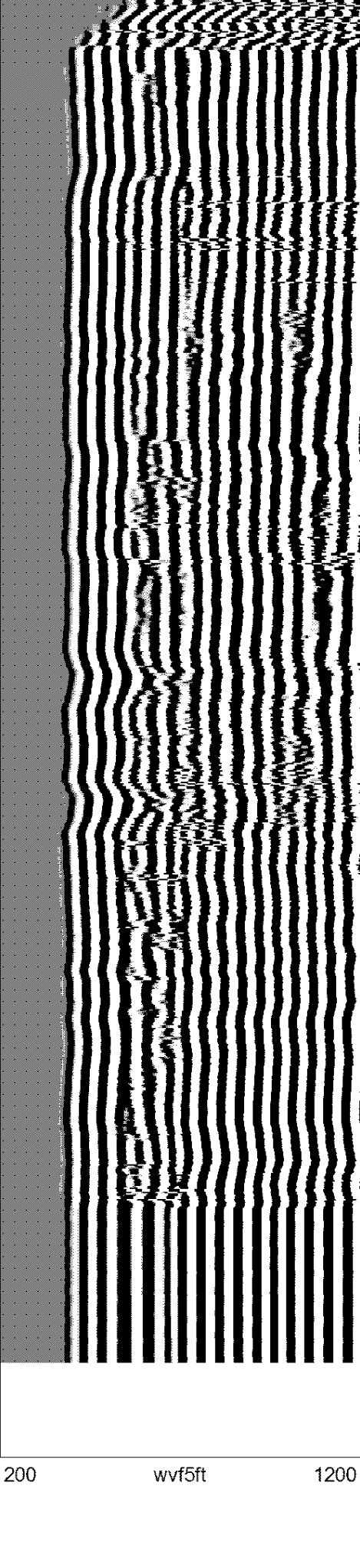
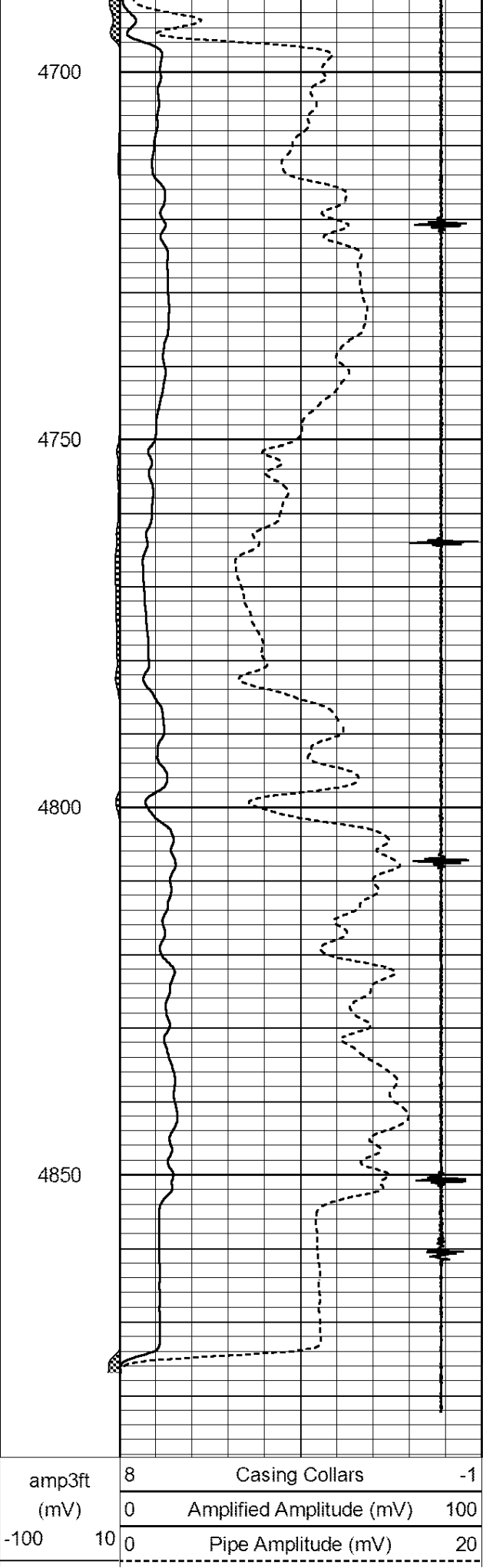
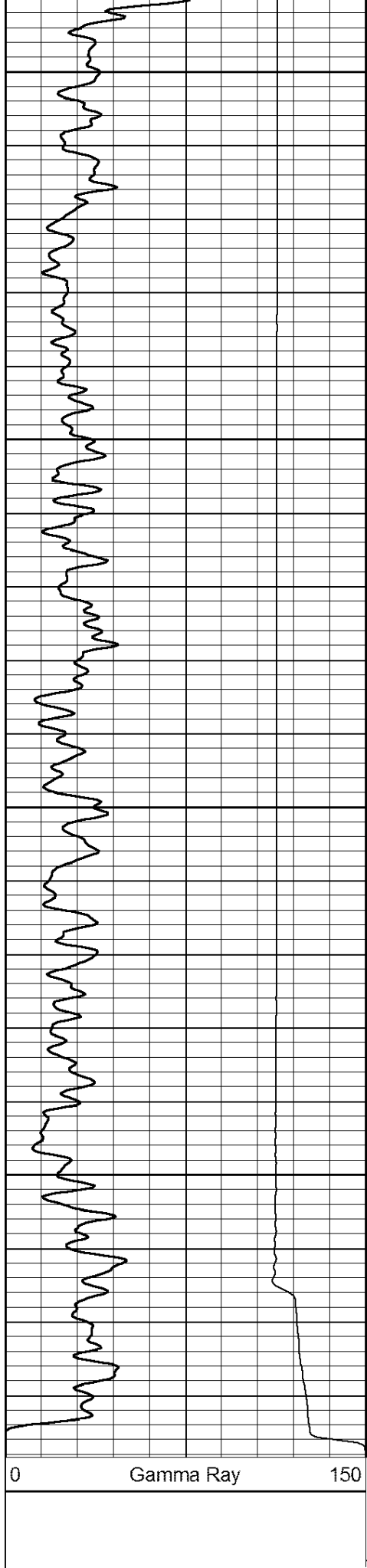




Repeat Section

Database File: shake_rudolph1-22.db
 Dataset Pathname: grcbl/pass2
 Presentation Format: cbldr
 Dataset Creation: Wed Apr 24 16:02:04 2013 by Log SCH 111116
 Charted by: Depth in Feet scaled 1:240





0	Gamma Ray	150	8	Casing Collars	-1	200	wvf5ft	1200
			amp3ft					
			(mV)	0	Amplified Amplitude (mV)	100		
			-100	10	Pipe Amplitude (mV)	20		