



Pioneer Energy Services

Sector Bond / Gamma Ray
CCL Log

15-051-26476-00-00

Company Samuel Gary Jr. and Associates
Well Ball No. 1-12
Field Wildcat
County Ellis
State Kansas

Location

1515' FSL & 2300' FEL

Other Services

Sec: 12 Twp: 15 S Rge: 16 W

Elevation

Permanent Datum Ground Level Elevation 1913
Log Measured From Kelly Bushing 8' Ft. Above Perm. Datum
Drilling Measured From Kelly Bushing

K.B. 1921
D.F. 1913
G.L. 1913

Run Number	One	
Date Survey	03/07/2013	
Date Cementing	03/04/2013	
Type Cementing Operation	Primary	
Depth Driller	3550	
Depth Logger	3491	
Logged Interval	3490 to 1950	to
Casing Driller	5.5 @ TD	@
Float Collar -- D.V. Tool	////	////
Squeeze Depth	////	
Amount & Type Cement	////	
Amount & Type Admix	////	
Type Fluid In Hole	Water	
Fluid Level	Full	
Salinity PPM CL	////	
Weight lb/gal -- Vis.	////	////
Approx. Logged Cement Top	2150	
Calculated Cement Top	////	
Max. Hole Temperature	111	
Tool No.	Rbt 3-6	
Spacing Recorded	3'-5"	
Equipment -- Location	18 D. Hagan	Hays
Recorded By	D. Hagan	
Witnessed By	Boomer	

<<< Fold Here >>>

All interpretations are opinions based on inferences from electrical or other measurements and we cannot and do not guarantee the accuracy or correctness of any interpretation, and we shall not, except in the case of gross or willful negligence on our part, be liable or responsible for any loss, costs, damages, or expenses incurred or sustained by anyone resulting from any interpretation made by any of our officers, agents or employees. These interpretations are also subject to our general terms and conditions set out in our current Price Schedule.

Comments

Thank you for using Pioneer Energy Services
785.625.3858

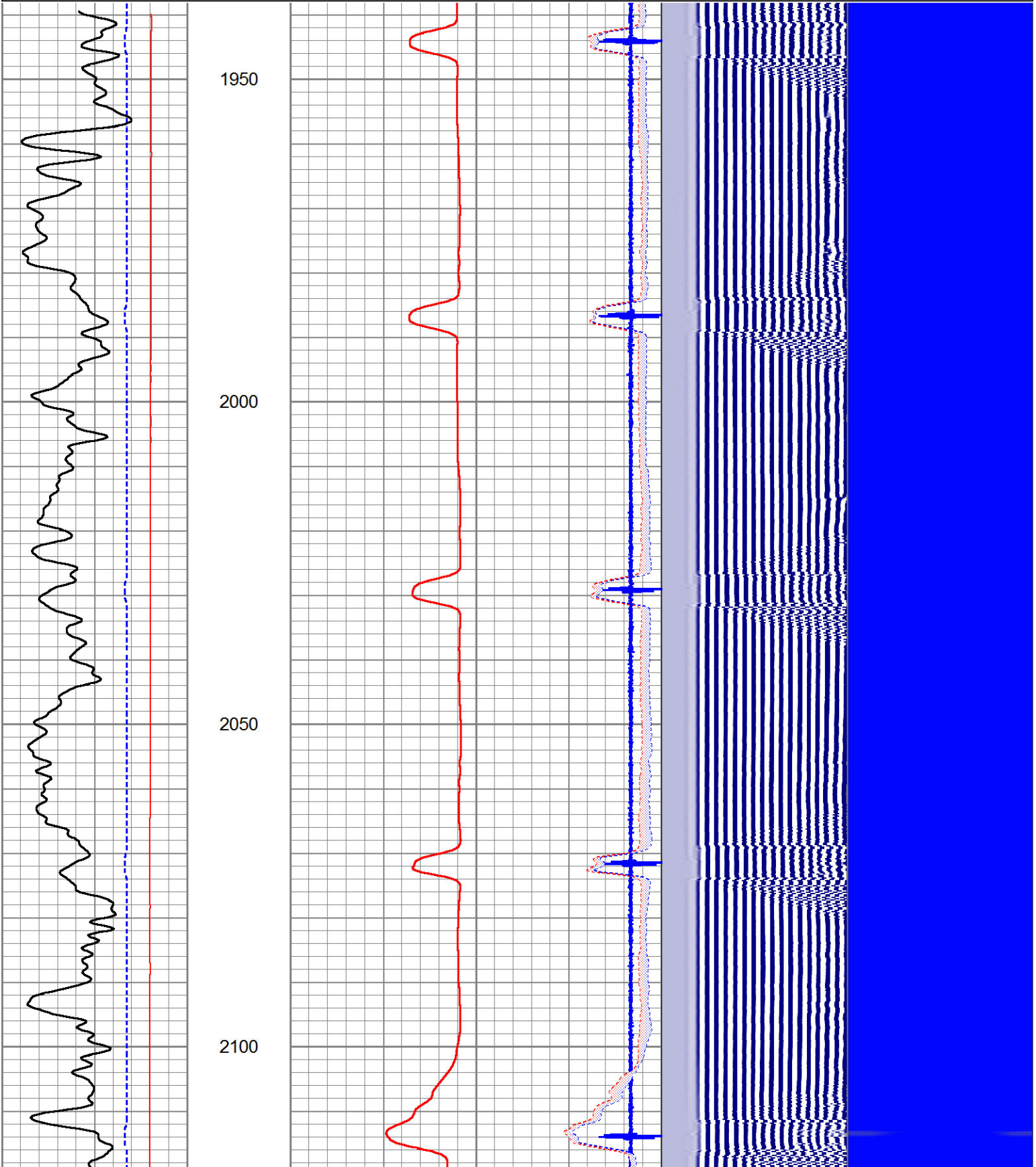
Walker, Ks. South to Norfolk Rd.

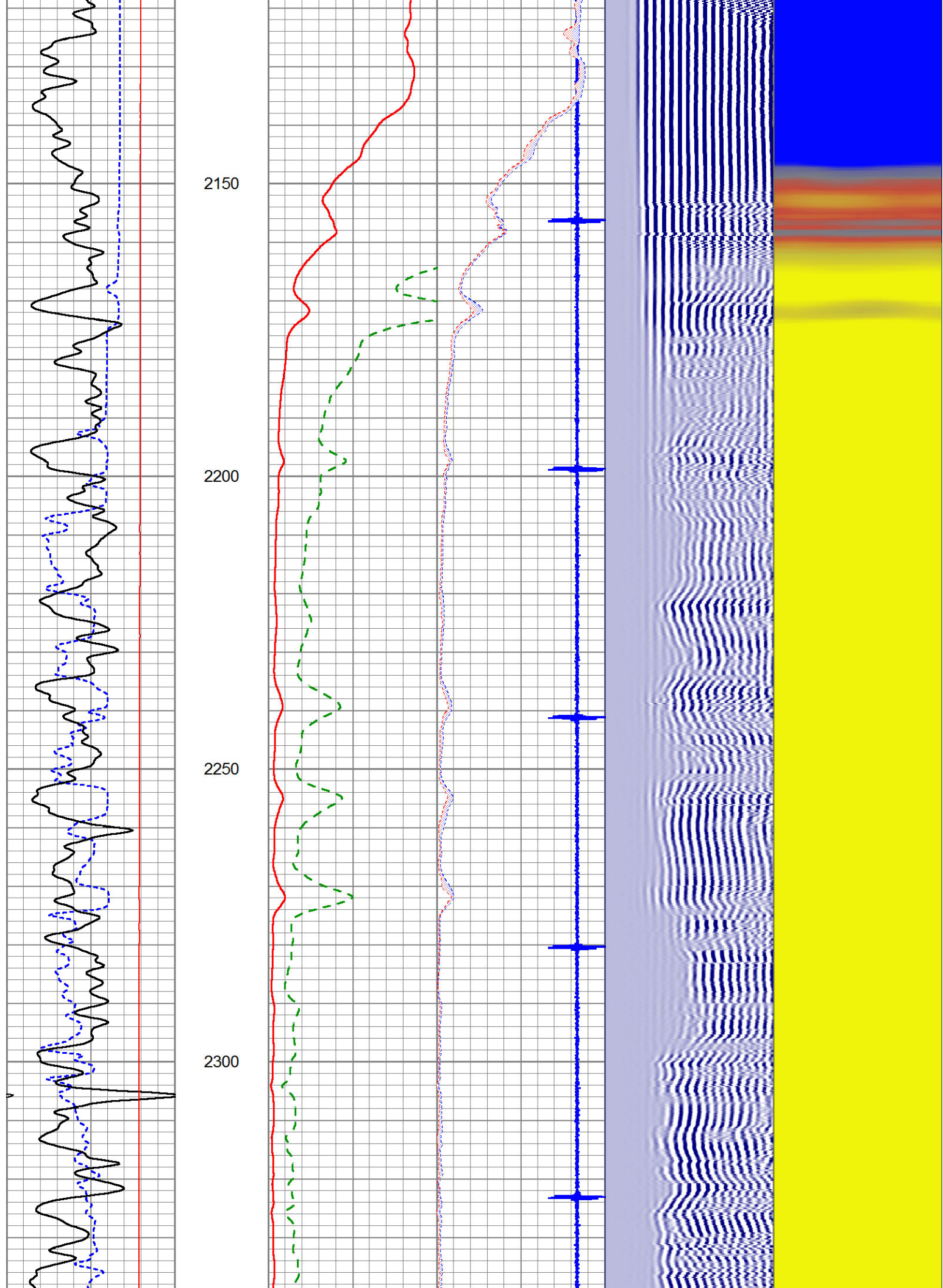
Database File: samuelgaryjrandassociates_ball_1-12.db
 Dataset Pathname: sgrcbl/pass3
 Presentation Format: scblclr2
 Dataset Creation: Thu Mar 07 08:29:44 2013 by Log 7.0 B1
 Charted by: Depth in Feet scaled 1:240

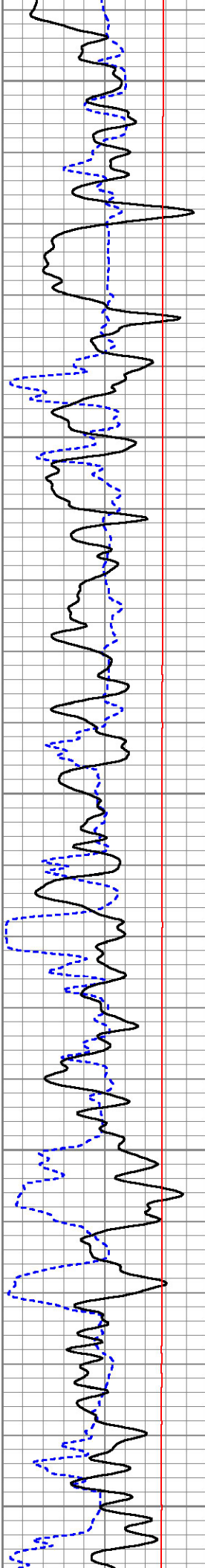
750	TT (usec)	70
0	GR	150
4000	LTEN (lb)	0

0	AMP (mV)	100	0	AMPAVG	150
0	AMPx5 (mV)	20	0	AMPMAX	150
0			0	AMPMIN	150
5	CCL	-1			

200	VDL	1200	1	Cement Map	8
			25		75







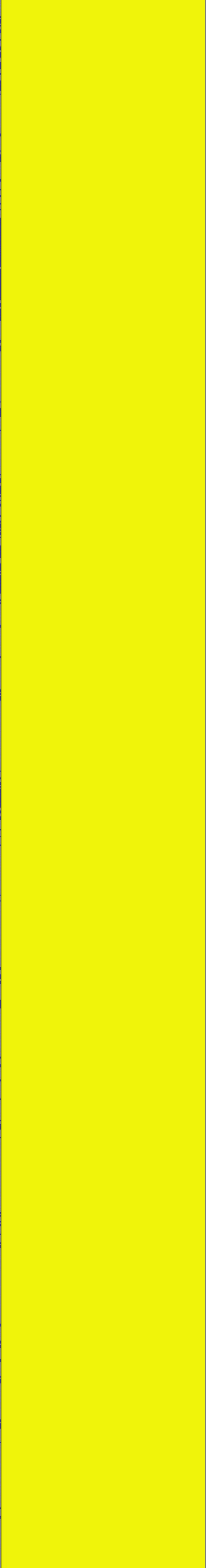
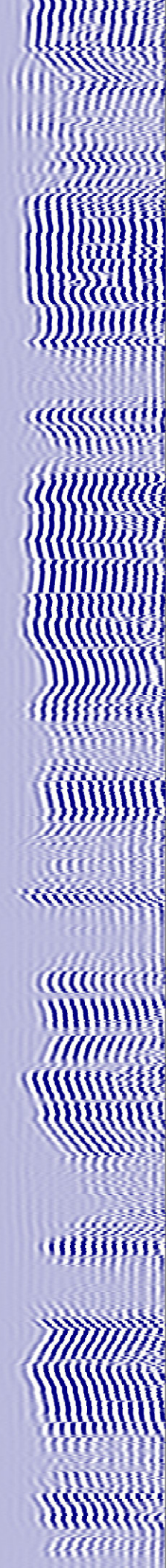
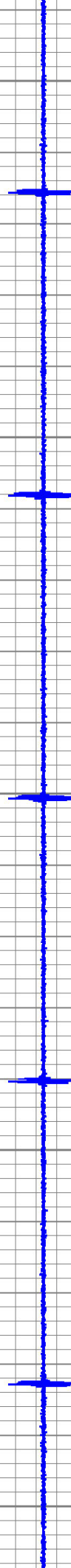
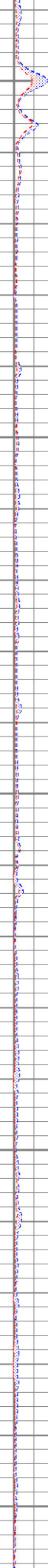
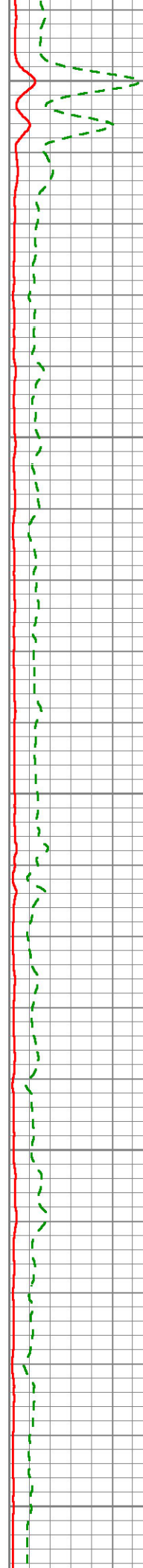
2350

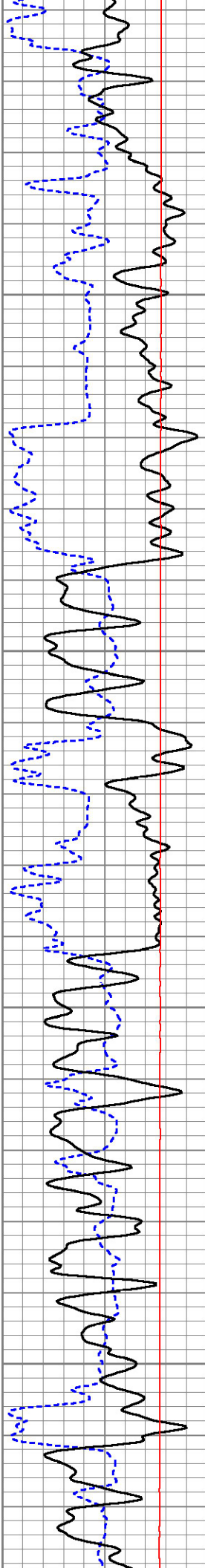
2400

2450

2500

2550



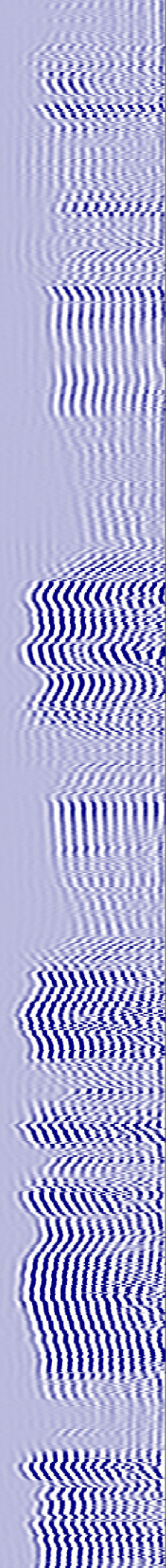
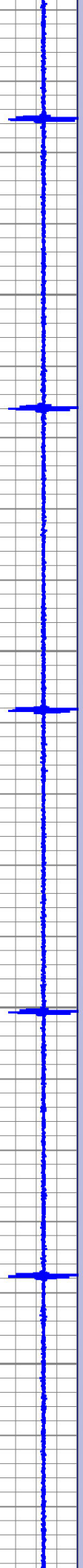
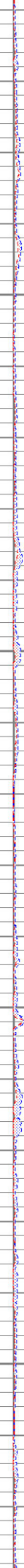
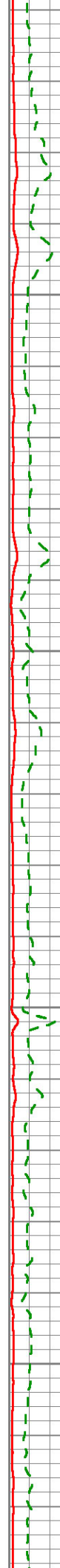


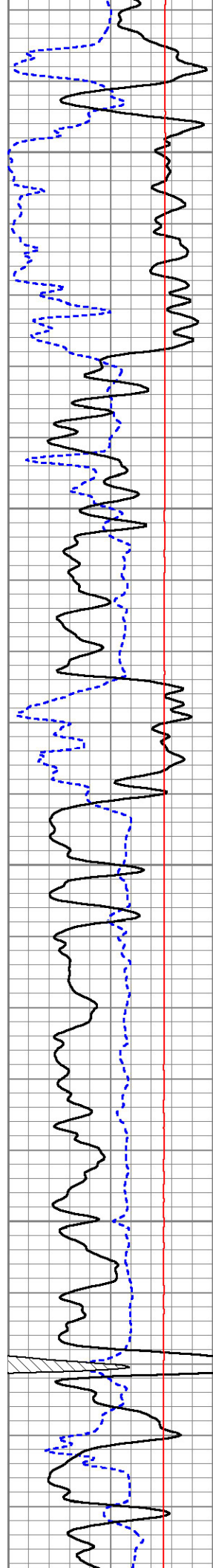
2600

2650

2700

2750



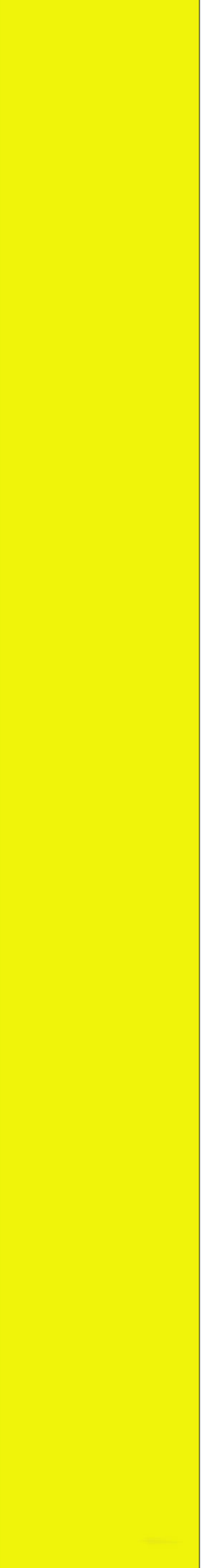
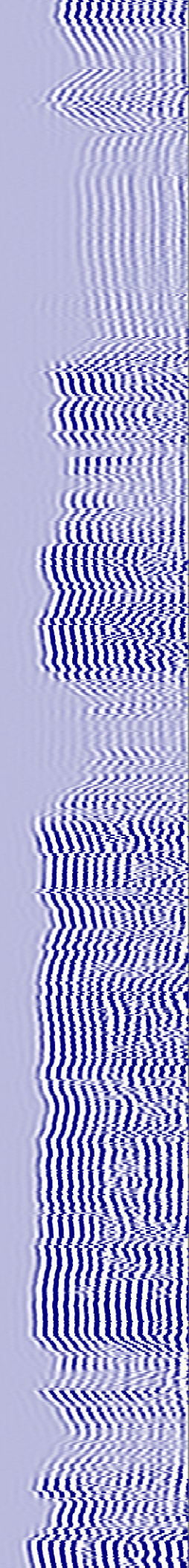
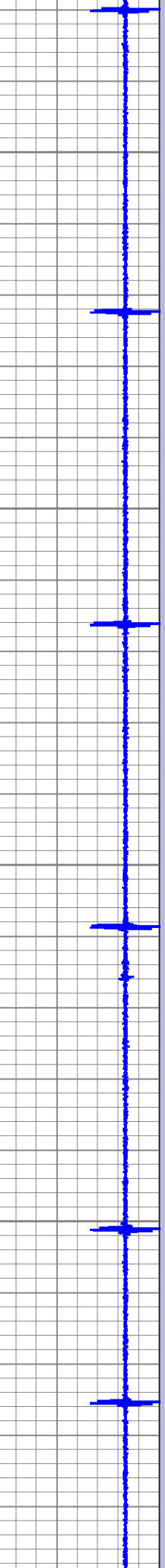
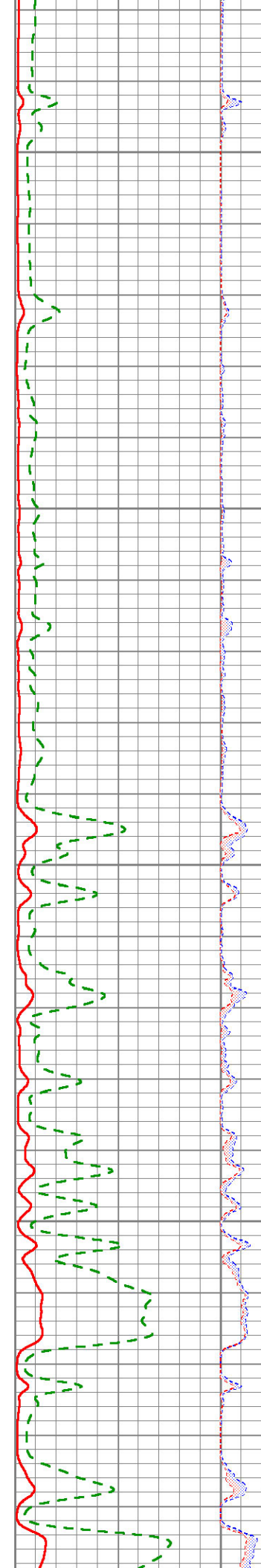


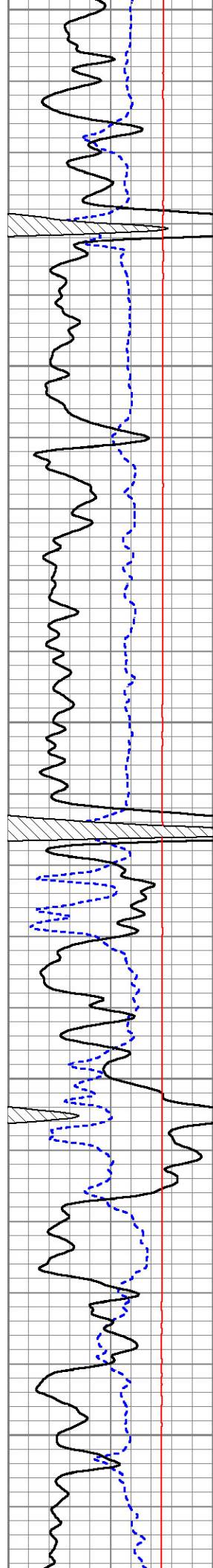
2800

2850

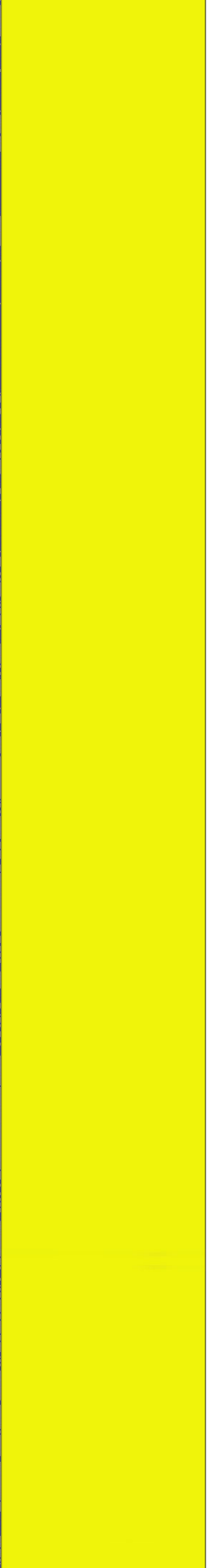
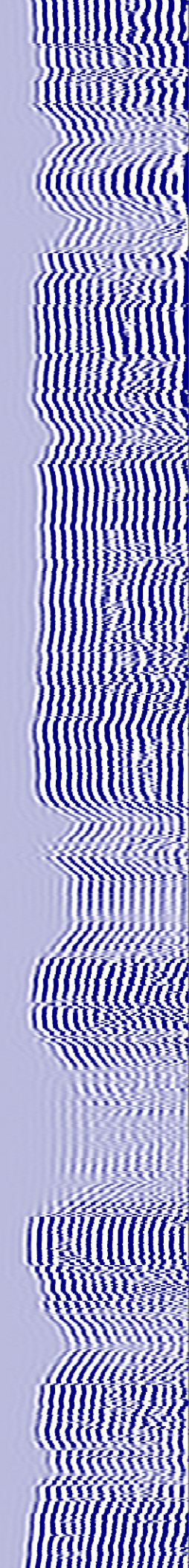
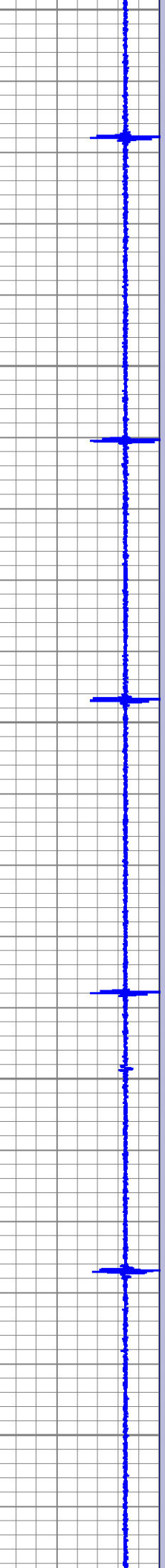
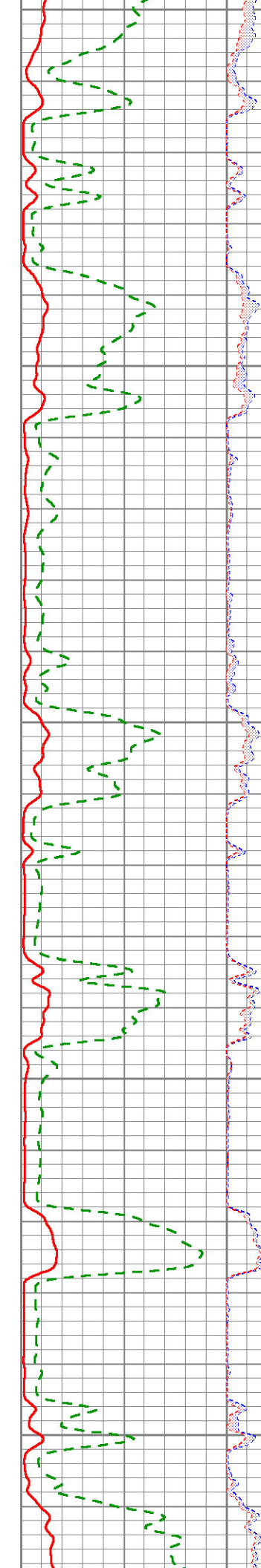
2900

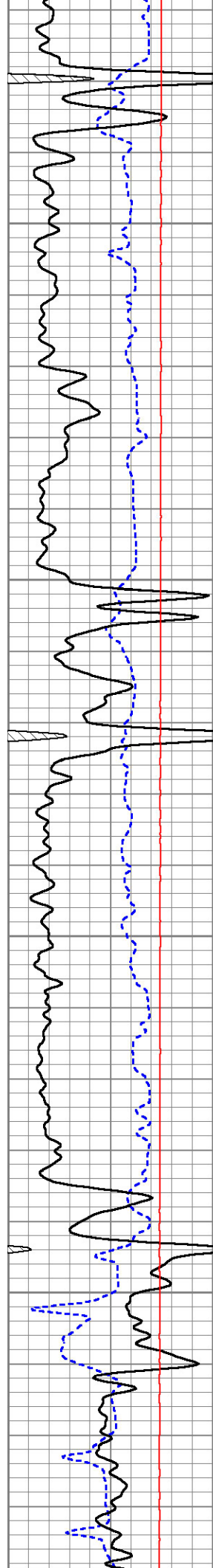
2950





3000
3050
3100
3150
3200



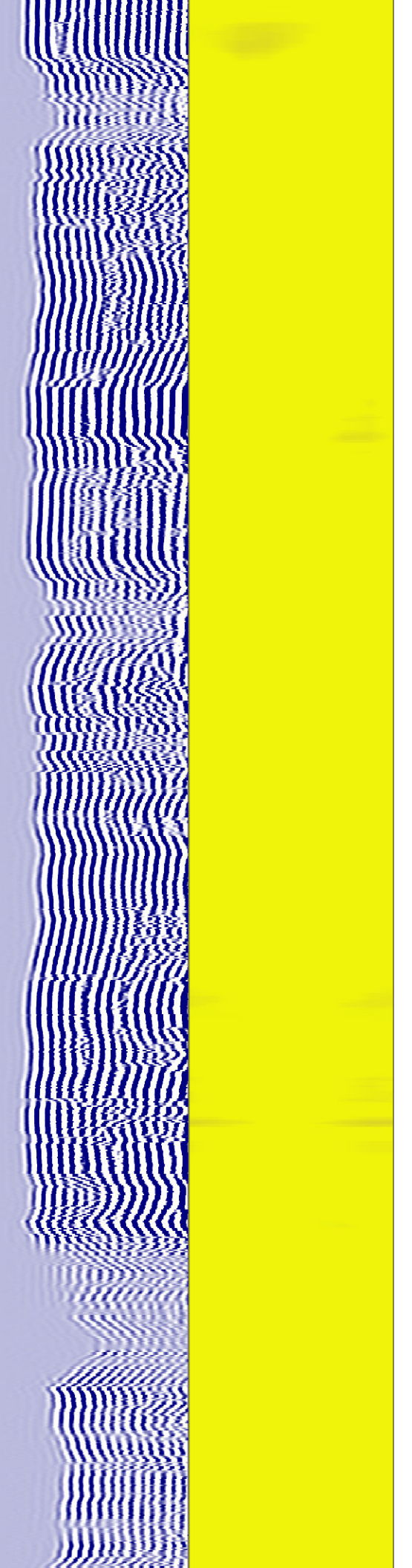
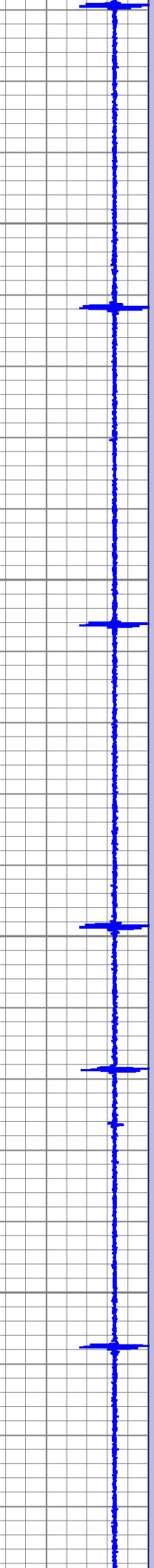
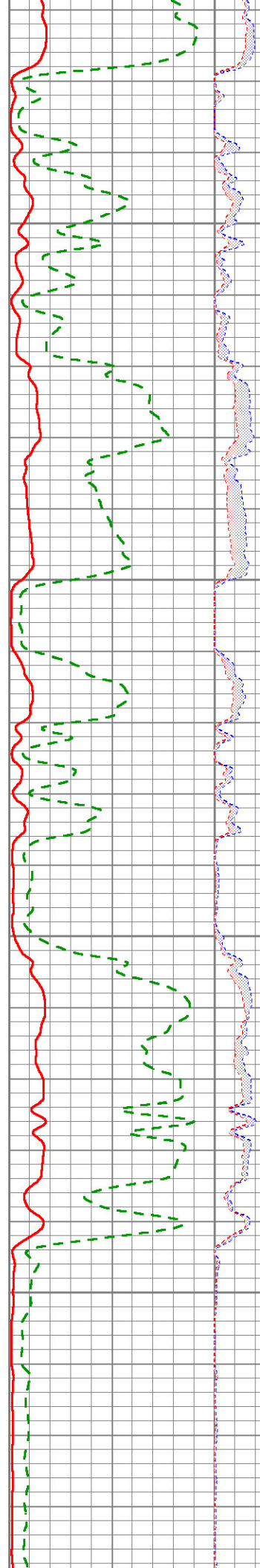


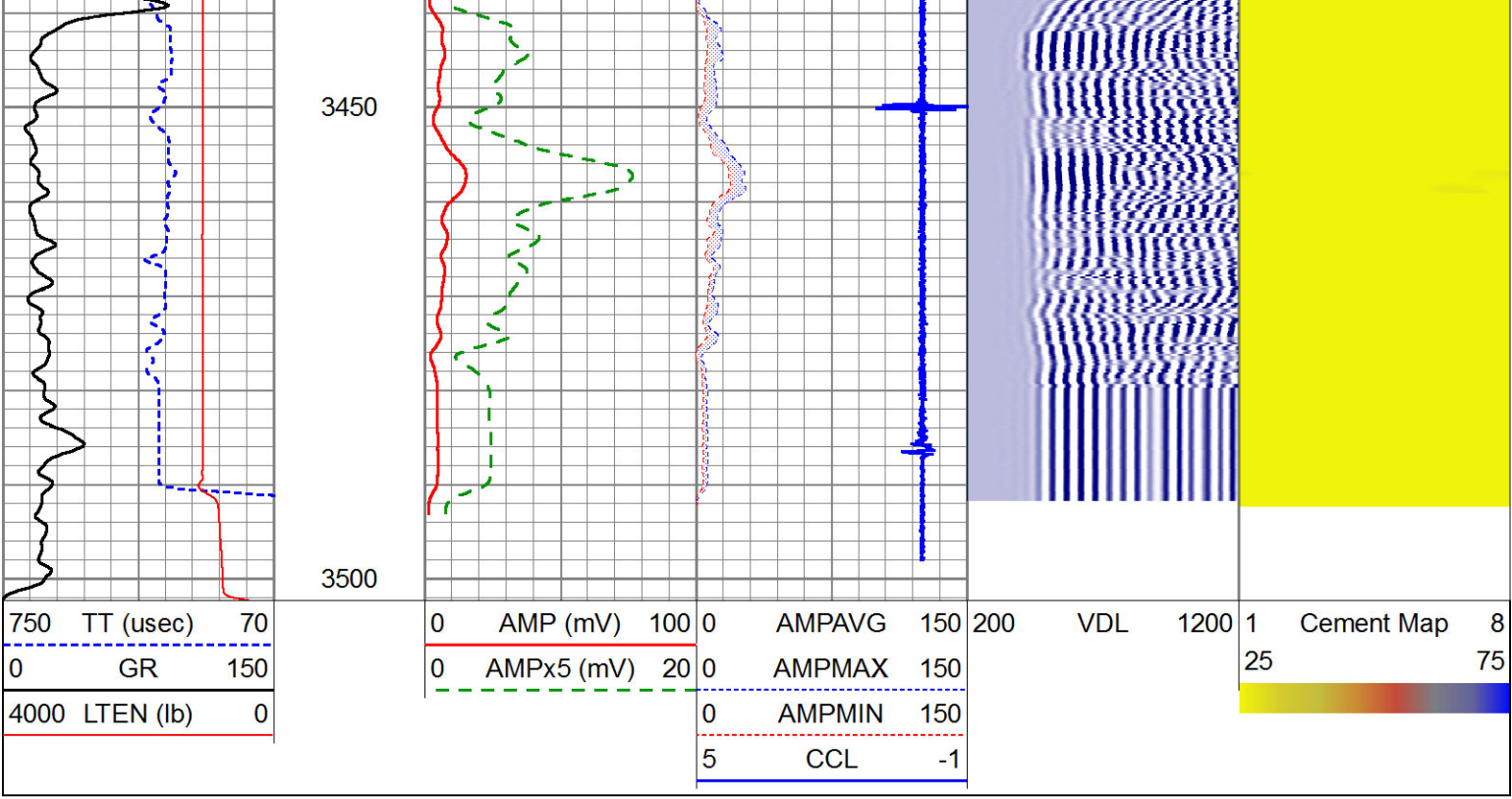
3250

3300

3350

3400





Repeat Section

Database File: samuelgaryjrandassociates_ball_1-12.db
 Dataset Pathname: sgrcbl/pass2
 Presentation Format: scblclr2
 Dataset Creation: Thu Mar 07 08:21:40 2013 by Log 7.0 B1
 Charted by: Depth in Feet scaled 1:240

