



**MIDWEST SURVEYS**  
 LOGGING - PERFORATING - CONSULTING SERVICES  
 P.O. Box 68, Ossawatimie, KS 66064  
 913 / 755 - 2128

**GAMMA RAY / NEUTRON / CCL**

File No.

Company: **RJ Enterprises**  
 Well: **Herman No. 32-A**  
 Field: **Bush City Shoestring**  
 County: **Anderson** State: **Kansas**

Location: **1119' FSL & 2619' FEL**  
**SW-SW-NW-SE**

Sec. **15** Type: **21s** Page: **20e**  
 Permit/Datum: **GL** Elevation: **NA**  
 Log Measured From: **GL**  
 Drilling Measured From: **GL**

Other Services: **Perforate**  
 Elevation: **K.B. NA**  
**D.F. NA**  
**G.L. NA**

Date:

09-11-2013

Run Number:

One

Depth Logger:

796.0

Bottom Logged Interval:

799.0

Top Log Interval:

789.0

Fluid Level:

Full

Type Fluid:

Water

Density / Viscosity:

NA

Salinity - PPM Cl:

NA

Max Recorded Temp:

NA

Estimated Cement Top:

0.0

Equipment No.:

107

Location:

Ossawatimie

Recorded By:

Steve Windisch

Witnessed By:

Jason Kent

BORE-HOLE RECORD:

RUN No. BIT FROM TO SIZE WGT. FROM TO

One 9.875" 0.0 20.0 7.00" 17.0 # 0.0 20.0

Two 5.625" 20.0 796.0 2.875" 6.5 # 0.0 791.0

CASINGS RECORD:

TO

20.0

791.0

<< Fold Here >>

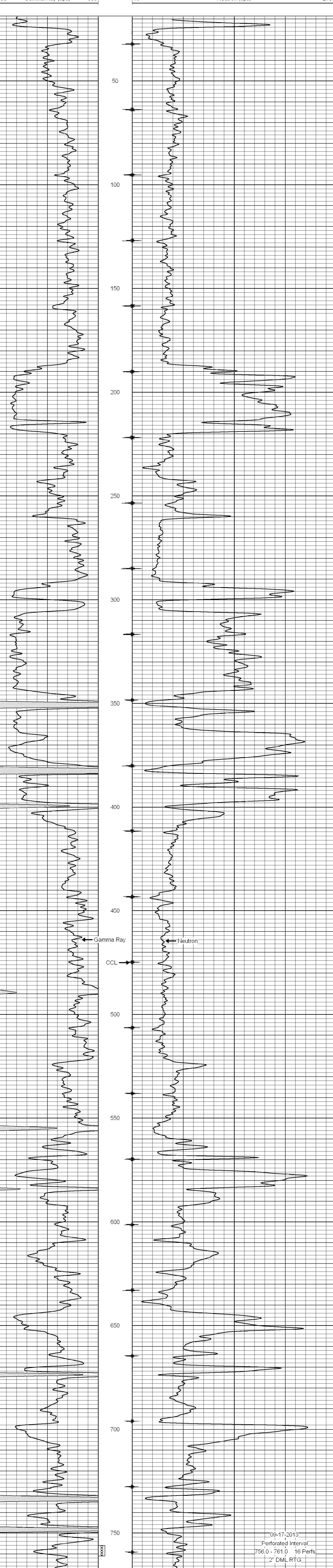
All interpretations are opinions based on inferences from electrical or other measurements and we cannot and do not guarantee the accuracy or correctness of any interpretation, and we shall not, except in the case of gross or willful negligence on our part, be liable or responsible for any loss, costs, damages, or expenses incurred or sustained by anyone resulting from any interpretation made by any of our officers, agents or employees. These interpretations are also subject to our general terms and conditions set out in our current Price Schedule.

Comments

Drilling Contractor :  
 RJ Enterprises

Database File: herman32a.db  
 Dataset Pathname: pass1  
 Presentation Format: gr-n-ccl  
 Dataset Creation: Wed Sep 11 14:37:34 2013 by Log SCH 111116  
 Charted by: Depth in Feet scaled 1:240

0 Gamma Ray (cps) 150 -1 CCL 1 10 Neutron (cps) 2100



0 Gamma Ray (cps) 150 -1 CCL 1 10 Neutron (cps) 2100