



MIDWEST SURVEYS
 LOGGING - PERFORATING - CONSULTING SERVICES
 P.O. Box 88, Ossawatimie, KS 66064
 913 / 755 - 2128

GAMMA RAY / NEUTRON / CCL

File No.

Company: **RJ Enterprises**
 Well: **Herman No. 9-1**
 Field: **Bush City Shoestring**
 County: **Anderson** State: **Kansas**

Location: **1297' FSL & 2789' FEL**
NE-NE-SE-SW

Sec. **15** Typ. **21s** Page **20e**
 Permit/Datum: **GL** Elevation: **NA**
 Log Measured From: **GL**
 Drilling Measured From: **GL**

Other Services: **Perforate**
 Elevation: **NA**
 K.B. **NA**
 D.F. **NA**
 G.L. **NA**

Date: **09-17-2013**

Run Number: **One**
 Depth Driller: **796.0**

Depth Logger: **799.0**
 Bottom Logged Interval: **789.0**

Top Log Interval: **20.0**
 Fluid Level: **Full**

Type Fluid: **Water**
 Density / Viscosity: **NA**
 Salinity - PPM Cl: **NA**

Max Recorded Temp: **NA**
 Estimated Cement Top: **0.0**

Equipment No.: **107** Location: **Ossawatimie**
 Recorded By: **Steve Windisch**

Witnessed By: **Jason Kent**

BORE-HOLE RECORD				CASINGS RECORD			
RUN No.	BIT FROM	TO	SIZE	WGT.	FROM	TO	
One	9.875"	20.0	7.00"	17.0 #	0.0	20.0	
Two	5.625"	20.0	7.96.0	2.875"	6.5 #	0.0	791.0

<<< Fold Here >>>

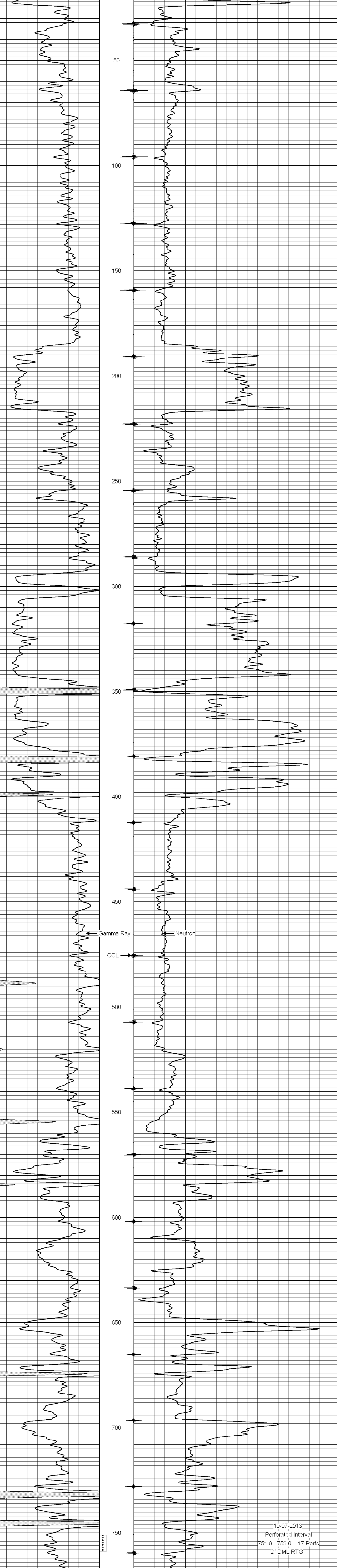
All interpretations are opinions based on inferences from electrical or other measurements and we cannot and do not guarantee the accuracy or correctness of any interpretation, and we shall not, except in the case of gross or willful negligence on our part, be liable or responsible for any loss, costs, damages, or expenses incurred or sustained by anyone resulting from any interpretation made by any of our officers, agents or employees. These interpretations are also subject to our general terms and conditions set out in our current Price Schedule.

Comments

Drilling Contractor :
RJ Enterprises

Database File: herman9i.db
 Dataset Pathname: pass1
 Presentation Format: gr-n-ccl
 Dataset Creation: Tue Sep 17 12:45:14 2013 by Log SCH 111116
 Charted by: Depth in Feet scaled 1:240

0	Gamma Ray (cps)	150	-1 CCL 1	10	Neutron (cps)	2100
150	Gamma Ray (cps)	300				



0	Gamma Ray (cps)	150	-1 CCL 1	10	Neutron (cps)	2100
150	Gamma Ray (cps)	300				