



GAMMA RAY  
NEUTRON  
COMPLETION LOG

Company PITMAN, JOHN DOUGLAS  
Well D. H. MARTIN #31  
Field WAYSIDE-HAVANA  
County MONTGOMERY  
State KANSAS

Location: 523 FSL & 4389<sup>th</sup> ELL  
NW/SE SW SW  
API #: 15-125-32390-00-00  
Other Services

Permanent Datum SEC 28 TWP 33S RGE 14E  
Log Measured From GL  
Drilling Measured From GL  
Elevation 861' EST  
K.D.  
D.T.: 861' EST  
G.L.: 861' EST

Date 10-09-2013  
Run Number 1 NW  
Depth Driller 765'  
Depth Logger 757.3'  
Top Log Interval 0  
Bottom Logged Interval 757.3'  
Fluid Level FULL  
Type Fluid WATER  
Production Casing 4.5" @ TD  
Max. Recorded Temp @  
Estimated Cement Top @  
Calculated Cement Top @  
Amount & Type Cement @  
Drilling Contractor  
Equipment Number 105  
Location GORMLEY, R  
Recorded By SHEARHART, G  
Witnessed By

<<< Fold Here >>>

All interpretations are opinions based on inferences from electrical or other measurements and we cannot and do not guarantee the accuracy or correctness of any interpretation, and we shall not, except in the case of gross or willful negligence on our part, be liable or responsible for any loss, costs, damages, or expenses incurred or sustained by anyone resulting from any interpretation made by any of our officers, agents or employees. These interpretations are also subject to our general terms and conditions set out in our current Price Schedule.

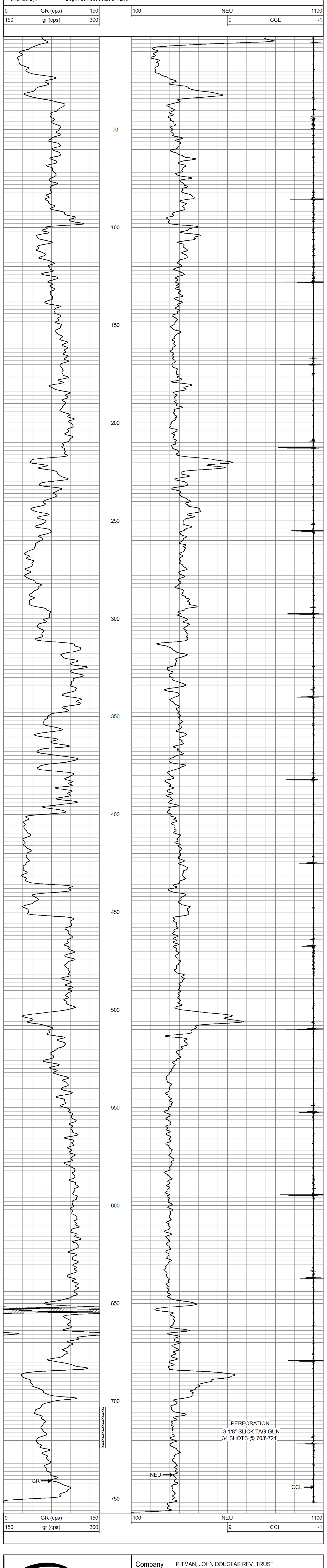
Comments

THANK YOU

Sensor	Offset (ft)	Schematic	Description	Len (ft)	OD (in)	Wt (lb)
GR	7.17		GR-TITAN_169 (1.69TTGRN) Titan 1 11/16" Gamma Ray	3.82	1.69	17.99
CCL	5.05		CCL-TITAN_169 (TIT169) Titan 1 11/16" Logging CCL	1.83	1.69	7.50
NEU	0.63		NEU-TITAN_169 (TIT169_001) Titan 1 11/16" Neutron	4.33	1.69	20.00

Dataset: d.h. martin #31.db: field/well/run1/pass1  
Total Length: 9.99 ft  
Total Weight: 45.49 lb  
O.D.: 1.69 in

Database File: f:\d.h. martin #31.db  
Dataset Pathname: pass1  
Presentation Format: gr-n-ccl  
Dataset Creation: Wed Oct 09 09:06:19 2013 by Log Std Casedhole 07122  
Charted by: Depth in Feet scaled 1:240



PERFORATION  
3 1/8" SLICK TAG GUN  
34 SHOTS @ 703'-724'