



MIDWEST SURVEYS
 LOGGING - PERFORATING - CONSULTING SERVICES
 P.O. Box 88, Ossawatimie, KS 66064
 913 / 755 - 2128

GAMMA RAY / NEUTRON / CCL

File No.

Company: **RJ Enterprises**
 Well: **Herman No. 8-1**
 Field: **Bush City Shoestring**
 County: **Anderson** State: **Kansas**

Location: **1624' FSL & 2798' FEL**
SE-SE-NE-SW

Sec. **15** Twp. **21S** Rge. **20E**
 Permian/Datum: **GL** Elevation: **NA**
 Log Measured From: **GL**
 Drilling Measured From: **GL**

Other Services: **Perforate**

Date: **09-17-2013**

Run Number: **One**

Depth Logger: **799.0**

Bottom Logged Interval: **789.0**

Top Log Interval: **20.0**

Fluid Level: **Full**

Type Fluid: **Water**

Density / Viscosity: **NA**

Salinity - PPM Cl: **NA**

Max Recorded Temp: **NA**

Estimated Cement Top: **0.0**

BORE-HOLE RECORD		CASINGS RECORD	
RUN No.	BIT FROM TO	SIZE	WGT. FROM TO
One	9.875" 20.0	7.00"	17.0 # 0.0
Two	5.625" 20.0	2.875"	6.5 # 0.0
			790.2

<<< Fold Here >>>

All interpretations are opinions based on inferences from electrical or other measurements and we cannot and do not guarantee the accuracy or correctness of any interpretation, and we shall not, except in the case of gross or willful negligence on our part, be liable or responsible for any loss, costs, damages, or expenses incurred or sustained by anyone resulting from any interpretation made by any of our officers, agents or employees. These interpretations are also subject to our general terms and conditions set out in our current Price Schedule.

Comments

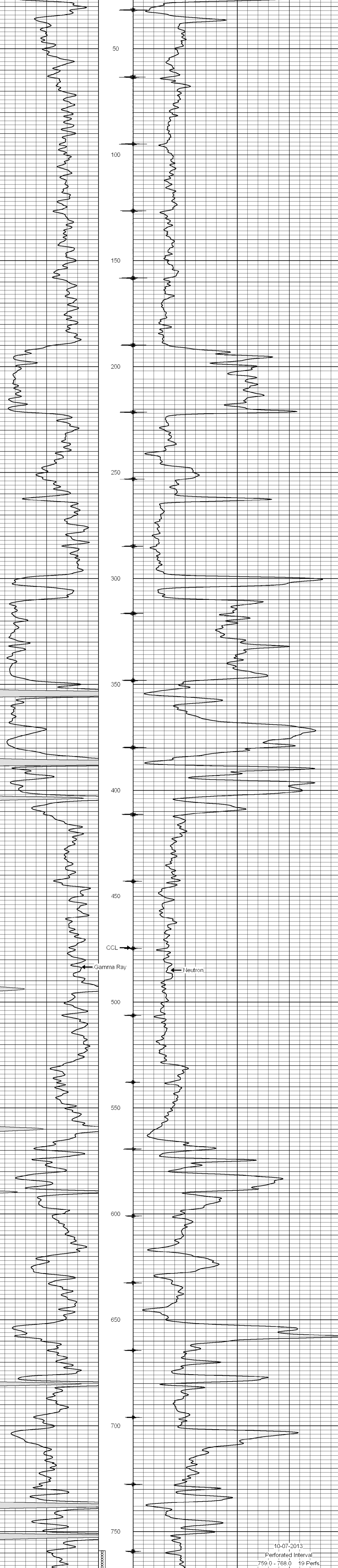
Drilling Contractor :
RJ Enterprises

Database File: herman0i.db
 Dataset Pathname: pass1
 Presentation Format: gr-n-ccl
 Dataset Creation: Tue Sep 17 13:18:01 2013 by Log SCH 111116
 Charted by: Depth in Feet scaled 1:240

0 Gamma Ray (cps) 150
 150 Gamma Ray (cps) 300

-1 CCL 1

10 Neutron (cps) 2100



10-07-2013
 Perforated Interval
 759.0 - 768.0 19 Perfs
 2" DML RTG

0 Gamma Ray (cps) 150
 150 Gamma Ray (cps) 300

-1 CCL 1

10 Neutron (cps) 2100