



MIDWEST SURVEYS
 LOGGING - PERFORATING - CONSULTING SERVICES
 P.O. Box 68, Osawatomie, KS 66064
 913 / 755 - 2128

GAMMA RAY / NEUTRON / CCL

File No.

API # 15-121-29,425

Company **Hass Petroleum, LLC**
 Well **North Cone No. 8-HP**
 Field **Paola - Rantoul**
 County **Miami** State **Kansas**

Location		Other Services	
1175' FSL & 880' FEL NE-NE-SE-SE		Perforate	
Sec. 11	Twp. 16s	Rge. 21e	Elevation
Permanent Datum	GL	Elevation	NA
Log Measured From	GL	K.B.	NA
Drilling Measured From	GL	D.F.	NA
		G.L.	NA

Date	02-11-2013
Run Number	One
Depth Driller	723.0
Depth Logger	712.3
Bottom Logged Interval	711.3
Top Log Interval	20.0
Fluid Level	Full
Type Fluid	Water
Density / Viscosity	NA
Salinity - PPM Cl	NA
Max Recorded Temp	NA
Estimated Cement Top	0.0
Equipment No.	107
Location	Osawatomie
Recorded By	Steve Windisch
Witnessed By	John Hass

RUN No.	BORE-HOLE RECORD			CASING RECORD			
	BIT	FROM	TO	SIZE	WGT.	FROM	TO
One	9.875"	0.0	21.0	7.00"	17.0 #	0.0	21.0
Two	5.625"	21.0	723.0	2.875"	6.5 #	0.0	716.0

<<< Fold Here >>>

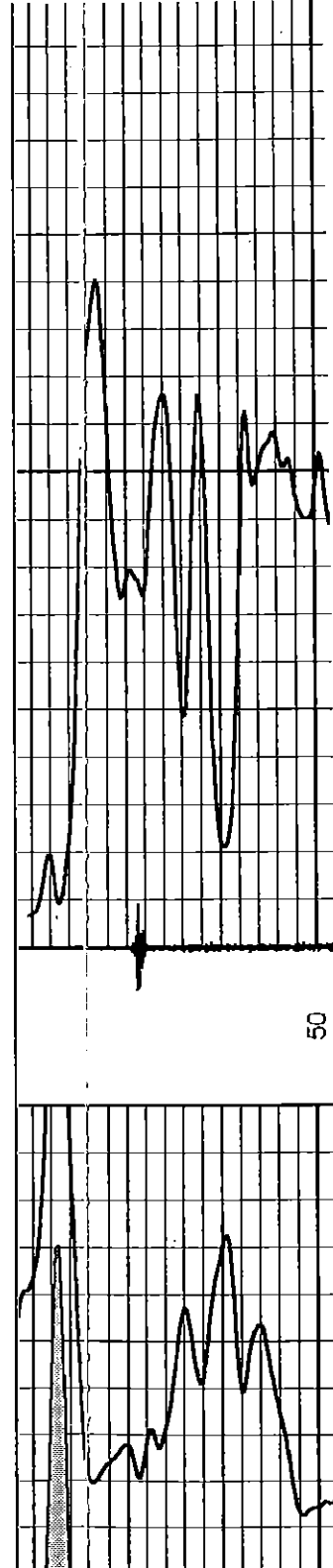
All interpretations are opinions based on inferences from electrical or other measurements and we cannot and do not guarantee the accuracy or correctness of any interpretation, and we shall not, except in the case of gross or willful negligence on our part, be liable or responsible for any loss, costs, damages, or expenses incurred or sustained by anyone resulting from any interpretation made by any of our officers, agents or employees. These interpretations are also subject to our general terms and conditions set out in our current Price Schedule.

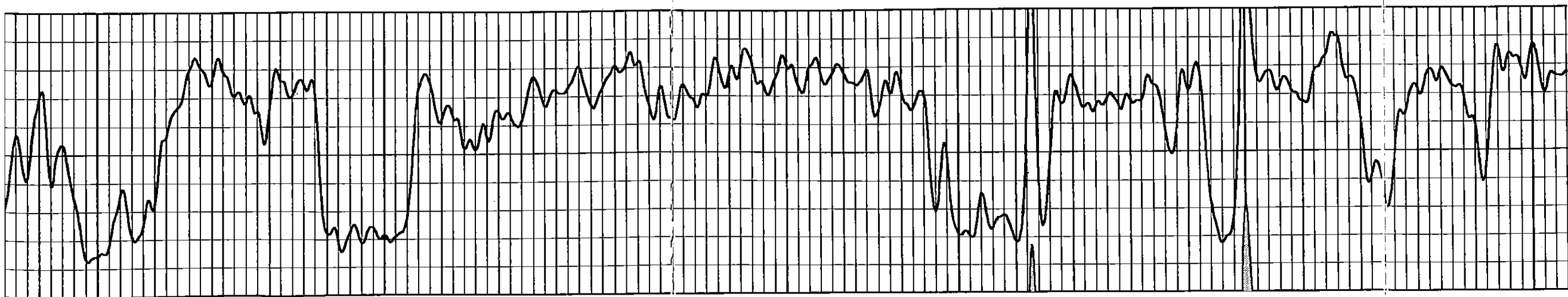
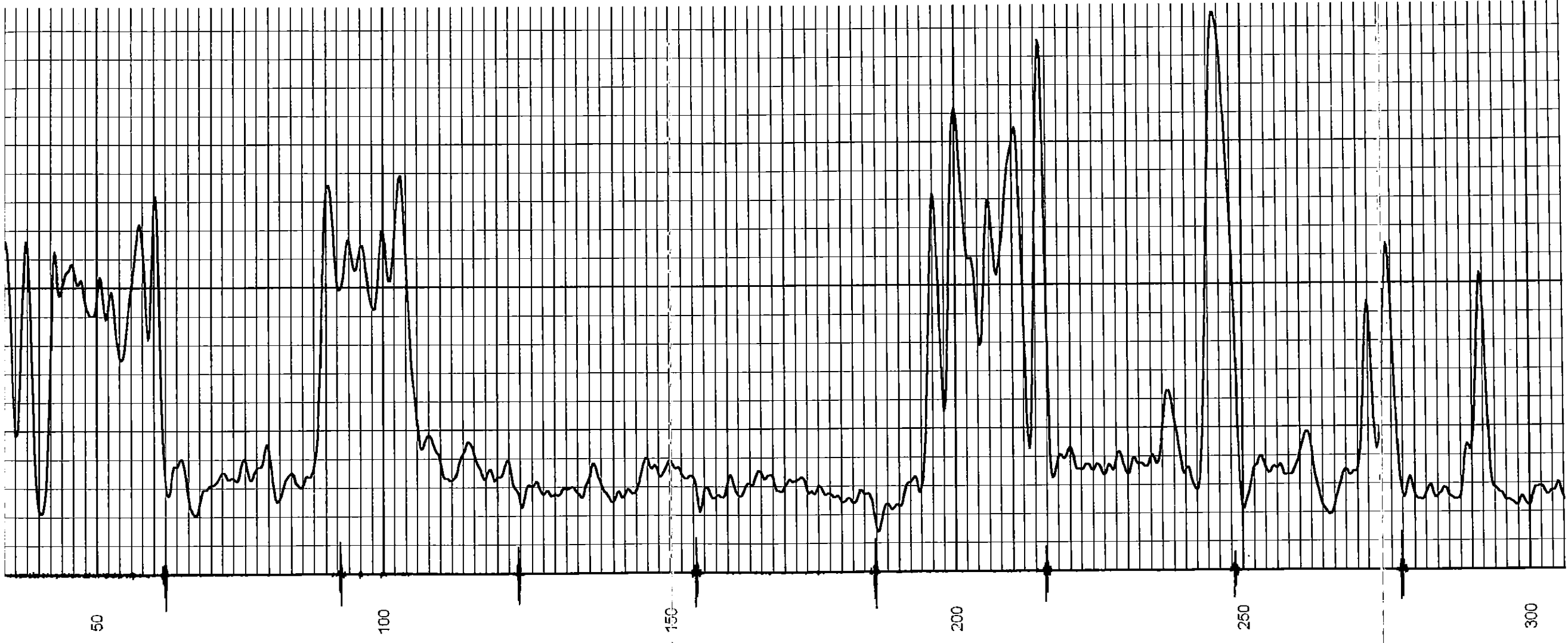
Comments

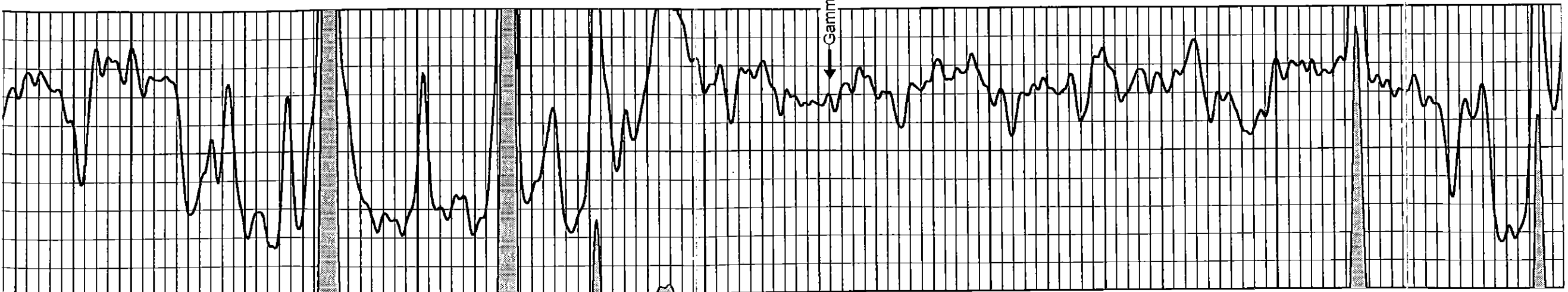
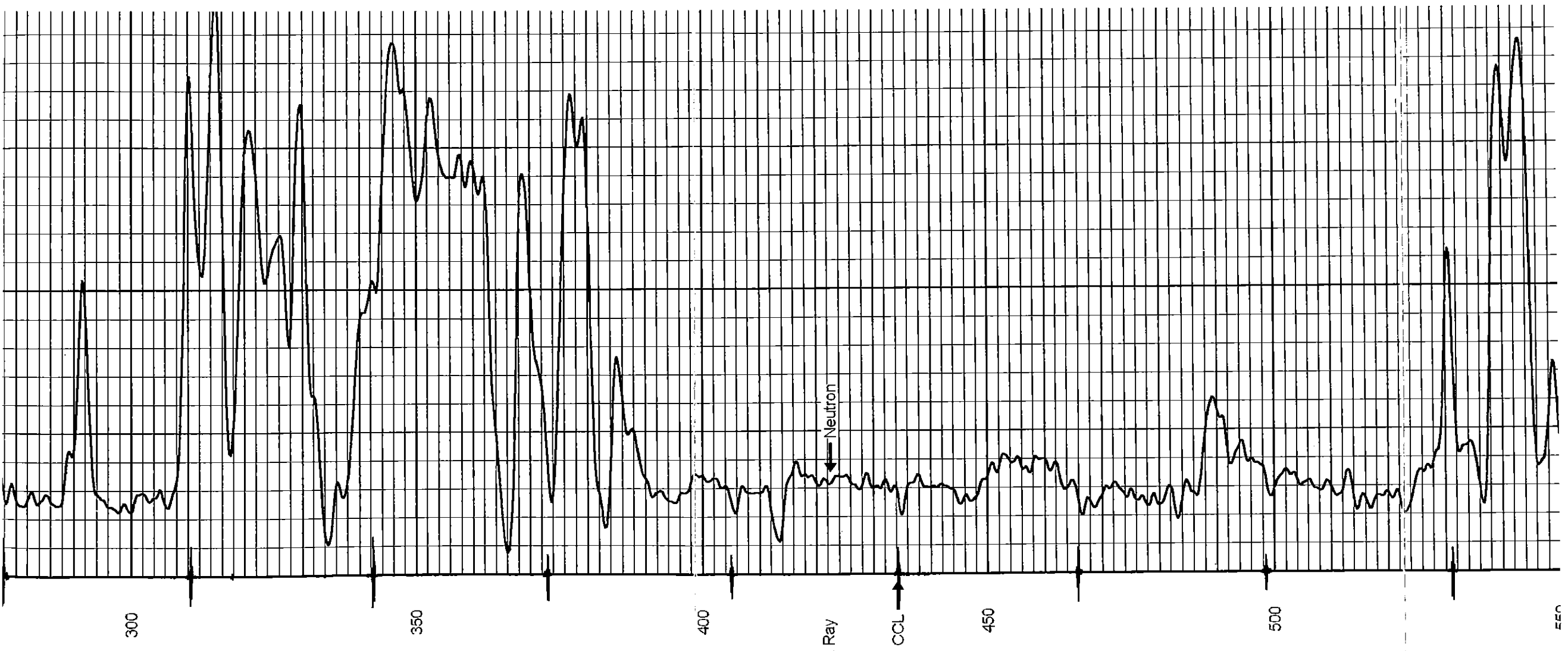
Drilling Contractor :
 Skyy Drilling, LLC
 Rig #5

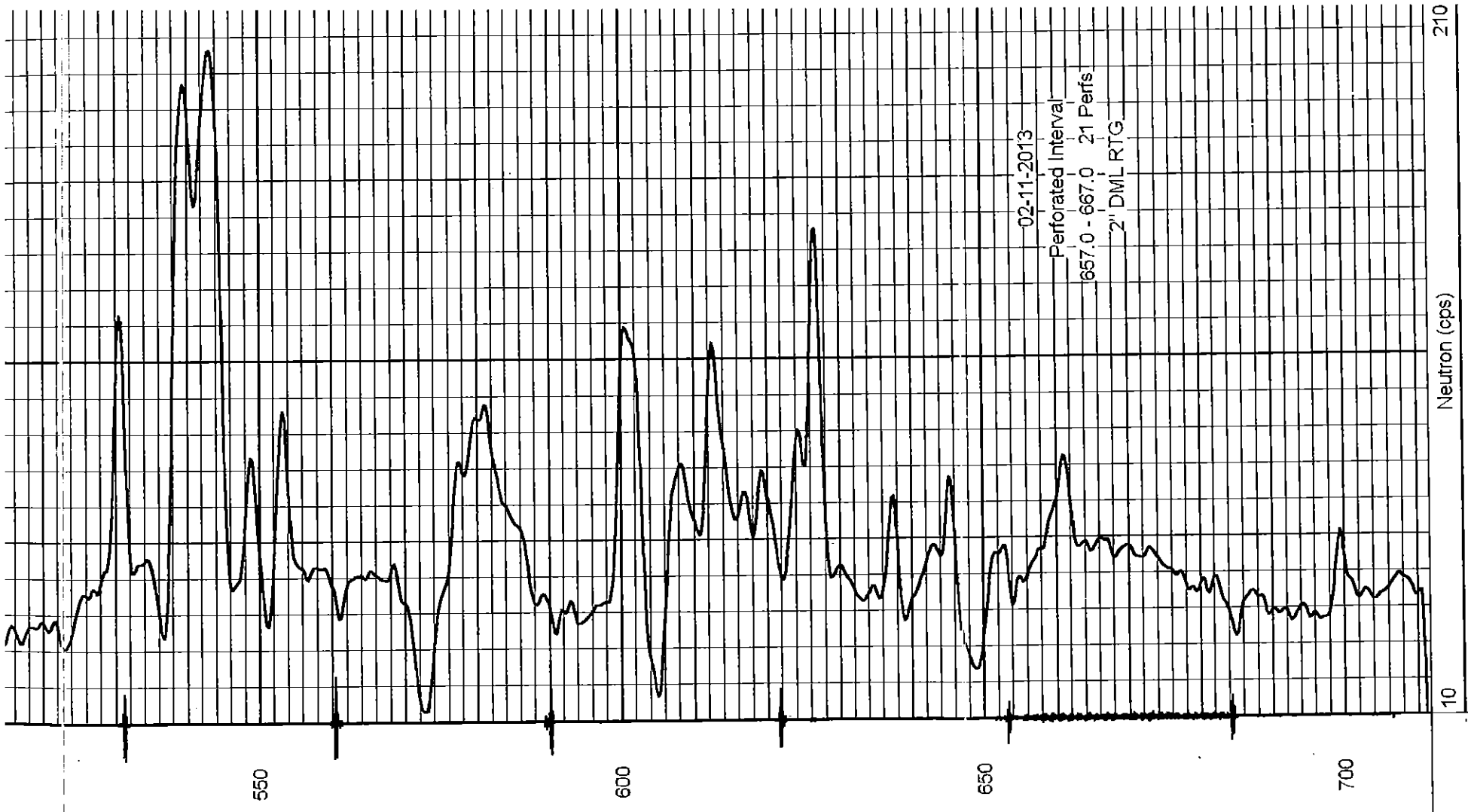
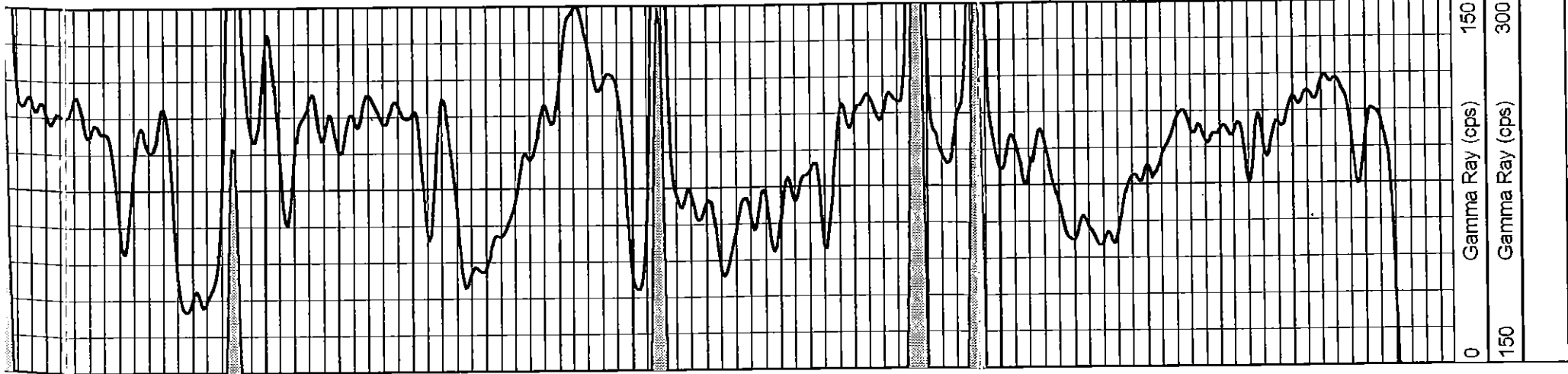
Database File: cone8n.db
 Dataset Pathname: pass1
 Presentation Format: gr-n-ccl
 Dataset Creation: Mon Feb 11 13:31:26 2013 by Log SCH 111116
 Charted by: Depth in Feet scaled 1:240

0	Gamma Ray (cps)	150	Neutron (cps)	2100
150	Gamma Ray (cps)	300		









02-11-2013

Perforated Interval

657.0 - 667.0 21 Perfs

2" DML RTG

oooooooo